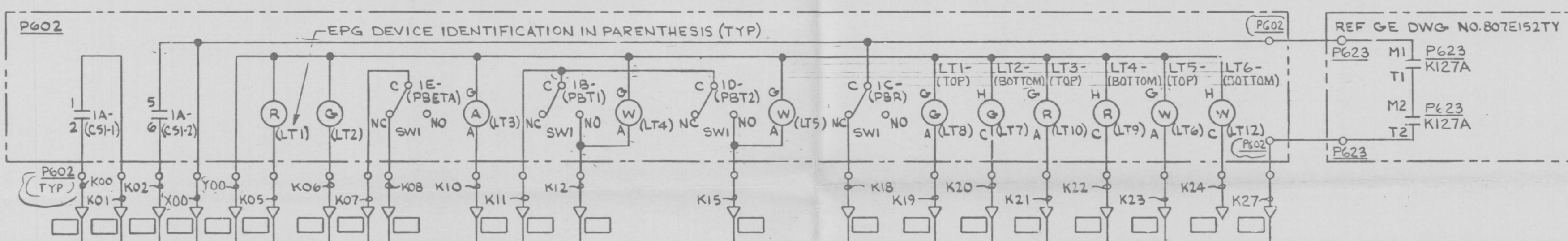


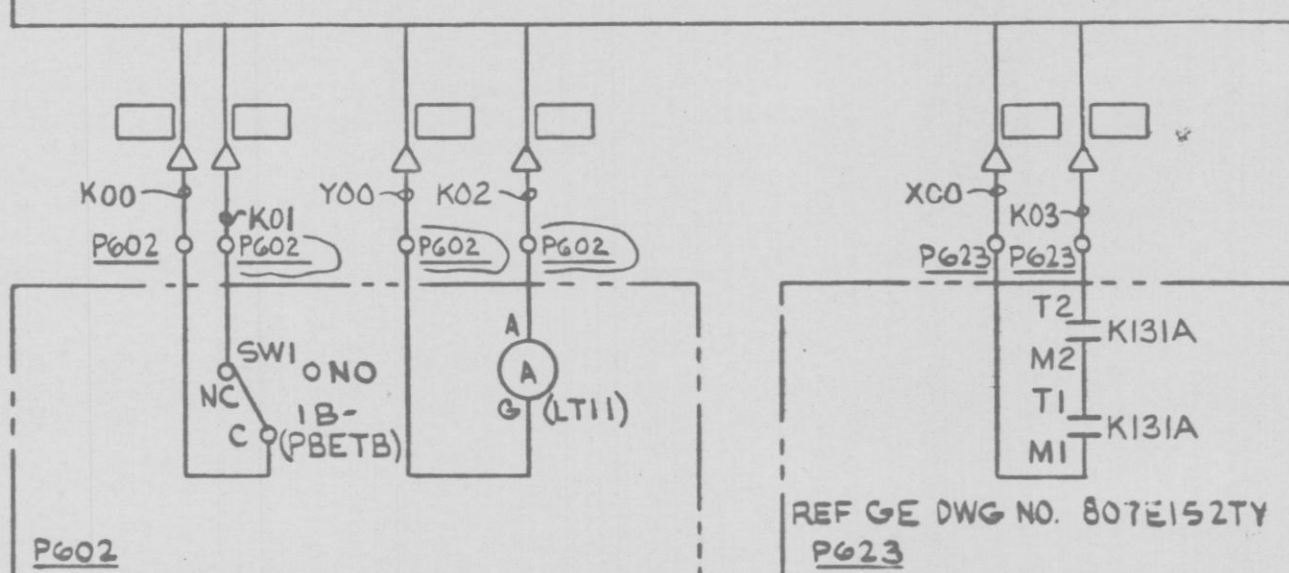
MAIN STEAM ISOL VALVE (OUTBD) 2MSS*HYV7C (B22-F028C) CKT NO. 2MSSC18 (GREEN) RPS-UPS "B", NOTES 2 & 3



REF GE DWG NO. 807E152TY

P623	M1	P623
	T1	K127A
	M2	P623
	T2	K127A

2MSS*IPNL91C
CONTROL AT MSIV RELAY PANEL REF. EPG DWG NO. 2540-E-1101



CS	DETAIL	ESK	SPARES	USED ON
1A-2MSSC18	(UI)	3C	3-4, 7-8	
1B-2MSSC18	MR	3E	SW2	
1C-2MSSC18	MN	3E	SW2	
1D-2MSSC18	MR	3E	SW2	
1E-2MSSC18	MN	3E	SW2	
1B-2MSSC19	MN	3E	SW2	

- NOTES:
- FOR COMPLETE CONT OF MAIN STM ISOL VALVE REFER TO EPG DWG 2538E1101.
 - CIRCUITS 2MSSC18 AND 2MSSC19 ARE ASSOCIATED WITH NON-ESSENTIAL REDUNDANT POWER SUPPLIES (RPS-UPS "A" & "B" RESPECTIVELY) AND CABLES ASSOCIATED WITH EACH CIRCUIT MUST BE ROUTED IN SEPARATE GROUNDED CONDUITS.
 - CABLES OF SAME COLOR AND POWERED FROM SAME SOURCE MAY BE ROUTED IN SAME CONDUIT.

NUCLEAR SAFETY RELATED
QA CAT I

AC ELEM DIAG-MISC AC CKTS
MAIN STM ISOL VALVE 2MSS*HYV7C CONT
NINE MILE POINT NUCLEAR STATION-UNIT 2
NIAGARA MOHAWK POWER CORPORATION

STONE & WEBSTER ENGINEERING CORPORATION

12177-ESK-7MSS19

CKT NO. 2MSSC19 (GRN & WHITE) RPS-UPS "A", NOTES 2 & 3

PRC
APERTURE
CARD

DESIGN CONTROL		DESIGN CONTROL	
ISSUE 3	ISSUE 3	ISSUE 3	ISSUE 3
10/6/82	10/6/82	10/6/82	10/6/82
ECW-013	ECW-013	ECW-013	ECW-013
JST	APM	JST	APM

D