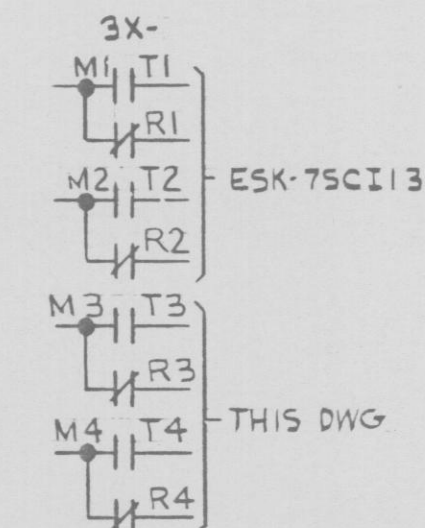
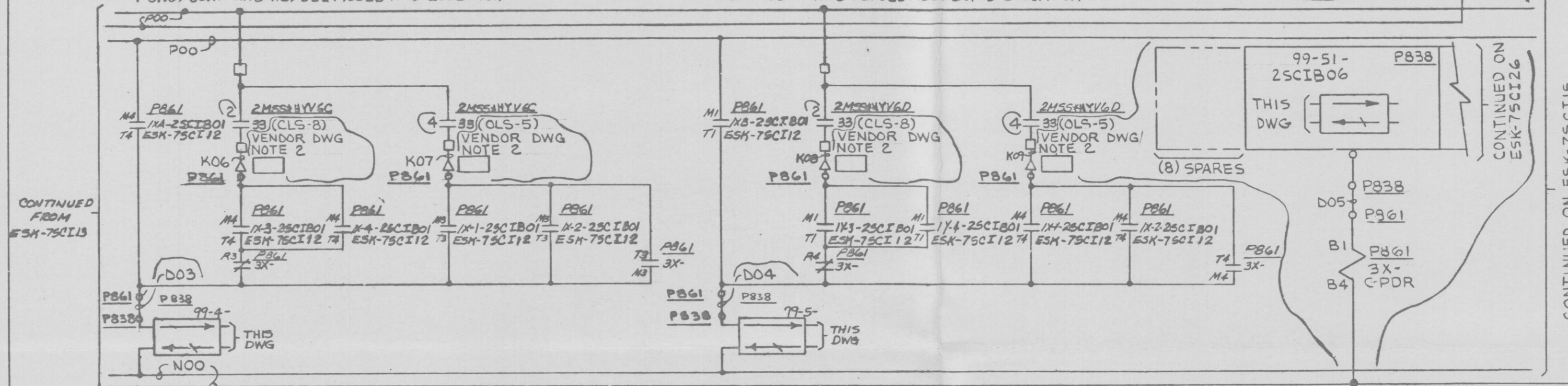


MAIN STEAM SUPPLY ISOL V 2M55*HYV6C (B22-F022C)
VALVE OPEN FOR START-UP AND RUN MODES, CLOSES FOR
SHUT-DOWN AND REFUEL MODES AND ISOLATION

MAIN STEAM SUPPLY ISOL V 2M55*HYV6D (B22-F022D)
VALVE OPEN FOR START-UP AND RUN MODES, CLOSES FOR
SHUT-DOWN AND REFUEL MODES AND ISOLATION

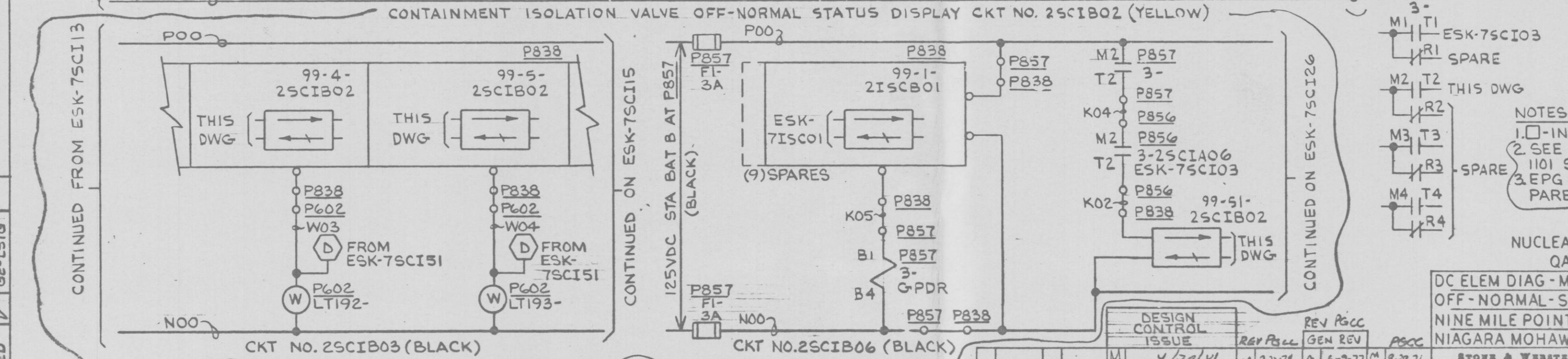
CONTINUED ON
ESK-7SCI24



CONTINUED ON
ESK-7SCI24

CONTAINMENT ISOLATION VALVE OFF-NORMAL STATUS DISPLAY CKT NO. 2SCIB02 (YELLOW)

PRC
APERTURE
CARD



NOTES:
1. □ - INDICATES DRYWELL PENETRATION.
2. SEE VENDOR DWG: EPG 2538-E-1101 S&W FILE NO. 0005.360-180-170.
3. EPG EQUIPMENT ID SHOWN IN PARENTHESIS.

NUCLEAR SAFETY RELATED
QA CAT I, II

DC ELEM DIAG - MISC DC CIRCUITS
OFF-NORMAL-STATUS DISPLAY
NINE MILE POINT NUCLEAR STATION-UNIT 2
NIAGARA MOHAWK POWER CORPORATION
STONE & WEBSTER ENGINEERING CORPORATION

12177-ESK-7SCI14

DESIGN CONTROL	REV	REV	REV	REV	REV
ISSUE	PULL	GEN	REV	REV	REV
4	4/30/71	1	2-7-71	1	6-9-77
INCORP	BLD	REV	REV	REV	REV
EDCR	REV	REV	REV	REV	REV
640390	REV	REV	REV	REV	REV
APM/S					

GE-NED
GE-LSTG