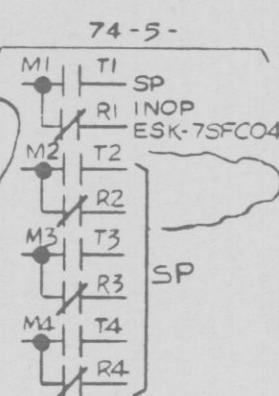
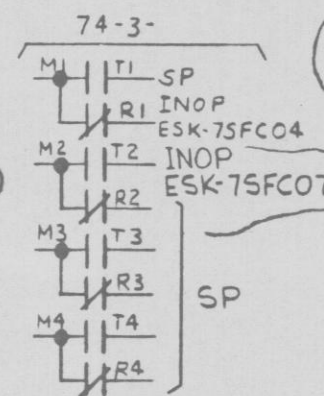
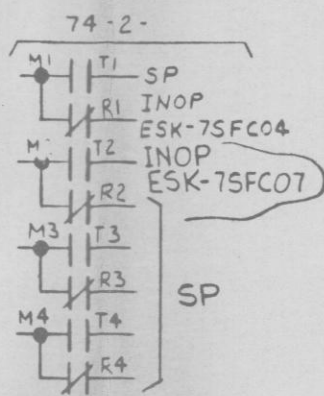


CKT NO 2SFC A05 (GREEN)

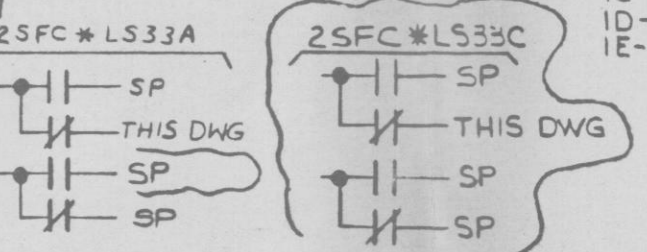
PRC APERTURE CARD

LIMIT SWITCH DEVELOPMENT						
33	VALVE POS		FUNCTION			
	FULL OPEN	FULL CLOSED	2SFC* HV17A	2SFC* HV18A	2SFC* AOV19A	2SFC* HV37A
1 A+H			SP	SP	SP	SP
2 C+D			GREEN LT	GREEN LT	GREEN LT	GREEN LT
3 E+H			SP	SP	SP	SP
4 G+H			SP	SP	SP	SP
5 A+H			RED LT	RED LT	RED LT	RED LT
6 C+D			SP	SP	SP	SP
7 E+H			SP	SP	SP	SP
8 G+H			SP	SP	SP	SP



- NOTES:
1. ALL EQUIPMENT LOCATED AT PNL P873 UNLESS OTHERWISE NOTED.
 2. LOGIC DIAGRAM LSK-34-2A,B
 3. O-ASSOCIATED VALVE OPENS WHEN SOV IS DE-ENERGIZED.
 4. O-ASSOCIATED VALVE CLOSING WHEN SOV IS DE-ENERGIZED

CS	DETAIL	ESK	SPARES	USED ON
1A-2SFC A05	"U"	3C	(1,2)(3,4)(7,8)	
1B-2SFC A05	"U"	3C	(3,4)(5,6)(7,8)	
1C-2SFC A05	"U"	3C	(3,4)(5,6)(7,8)	
1D-2SFC A05	"U"	3C	(3,4)(5,6)(7,8)	
1E-2SFC A05	"U"	3C	(3,4)(5,6)(7,8)	



NUCLEAR SAFETY RELATED QA CAT I

AC ELEM DIAG-MISC AC CKTS
SPENT FUEL POOL CLG MISC VALVES DIV 1.
NINE MILE POINT NUCLEAR STATION-UNIT 2
NIAGARA MOHAWK POWER CORPORATION

12177-ESK-7SFCOI

GE-RED
✓ GE-LS16

DESIGN CONTROL ISSUE		PGCC REDRAWN	
4	INCORP E+DCLR G+OIO	3	RAS/HH
5		2	MM BH
6		1	CH GS
7			H KVR
8			RBS JLK

D