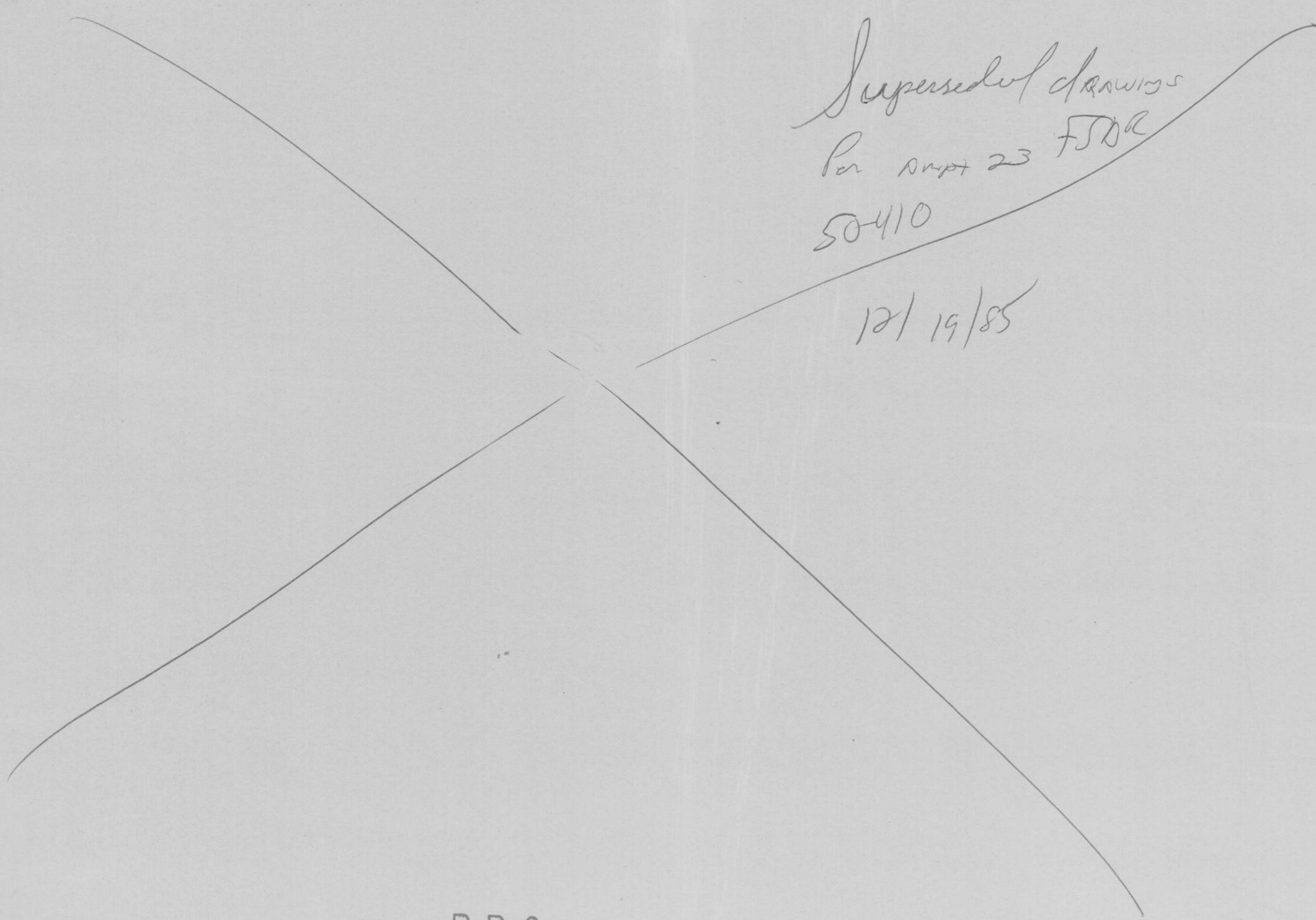


*Superseded drawings
Per AWP 23 FSDC
50410
12/19/85*



PRC
APERTURE
CARD

- NOTES:
1. ALL EQUIPMENT LOCATED AT SWGR UNLESS OTHERWISE NOTED.
 2. ALL CIRCUITS ARE YELLOW UNLESS OTHERWISE NOTED.
 3. GEN POTS & FUSES ARE LOCATED IN HV GEN CONT PANEL 2EGS*PNL31.

- 59-
- 1-2 SPARE
 - 3-4 SPARE
 - 7-8 CKT-2EGPY02 ESK-8EGP08
 - 9-10 SPARE

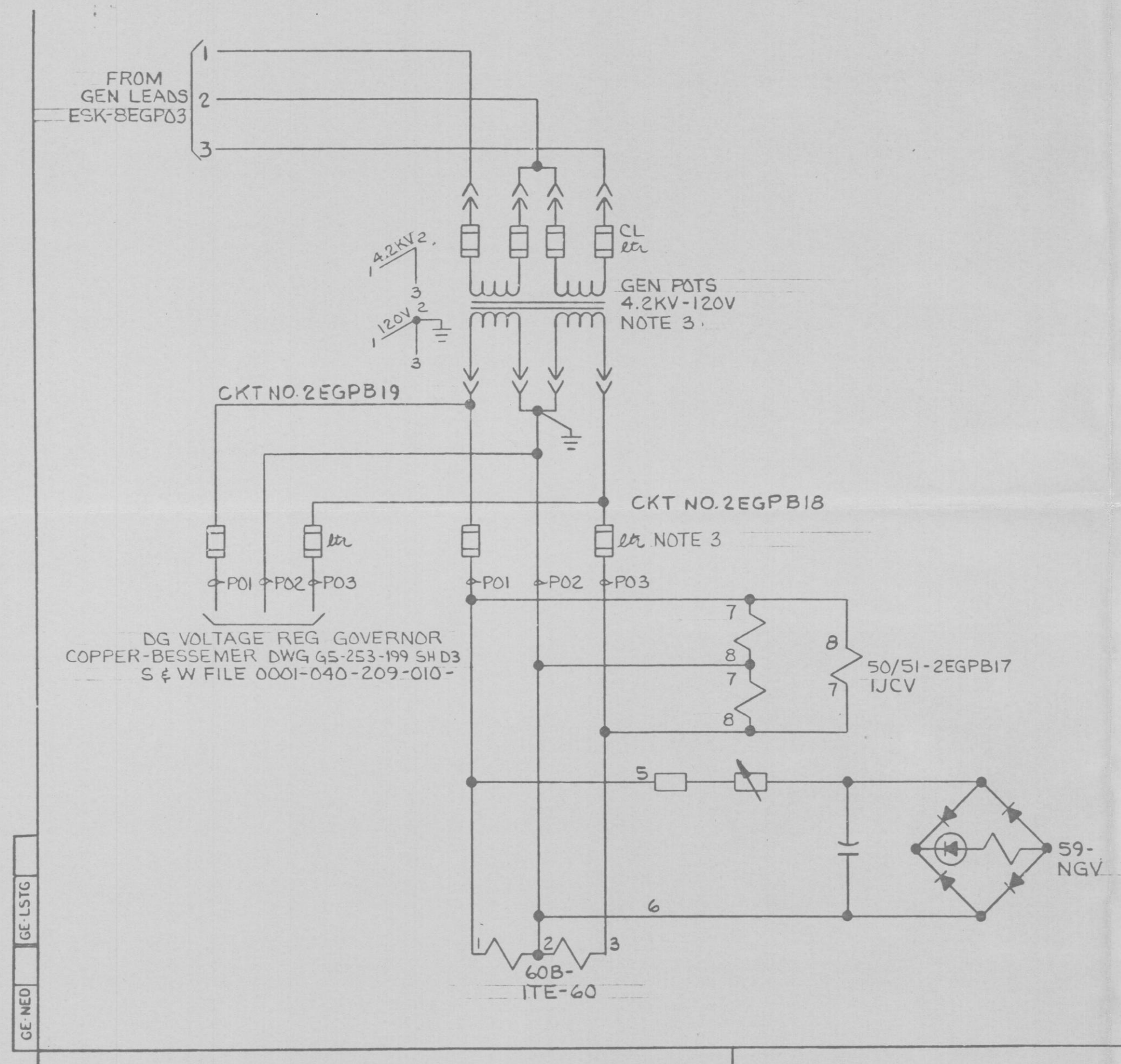
NUCLEAR SAFETY RELATED
QA CAT I

AC ELEM DIAG - POT CKT
STANDBY GEN 2EGS*EG3(Y)RLY AND MTR
NINE MILE POINT NUCLEAR STATION-UNIT 2
NIAGARA MOHAWK POWER CORPORATION
STONE & WEBSTER ENGINEERING CORPORATION
12177-ESK-8EGPIO

DESIGN
CONTROL
ISSUE
1
JST

7	6	5	4	3	2	1
---	---	---	---	---	---	---

D



GE-1STG
GE-NEO