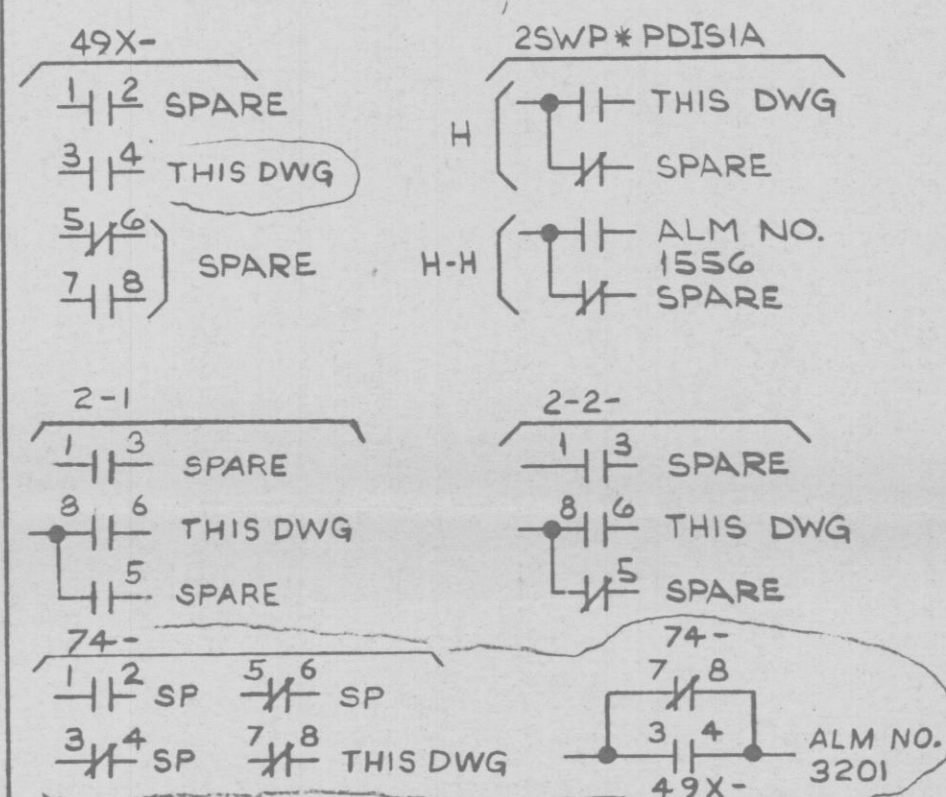
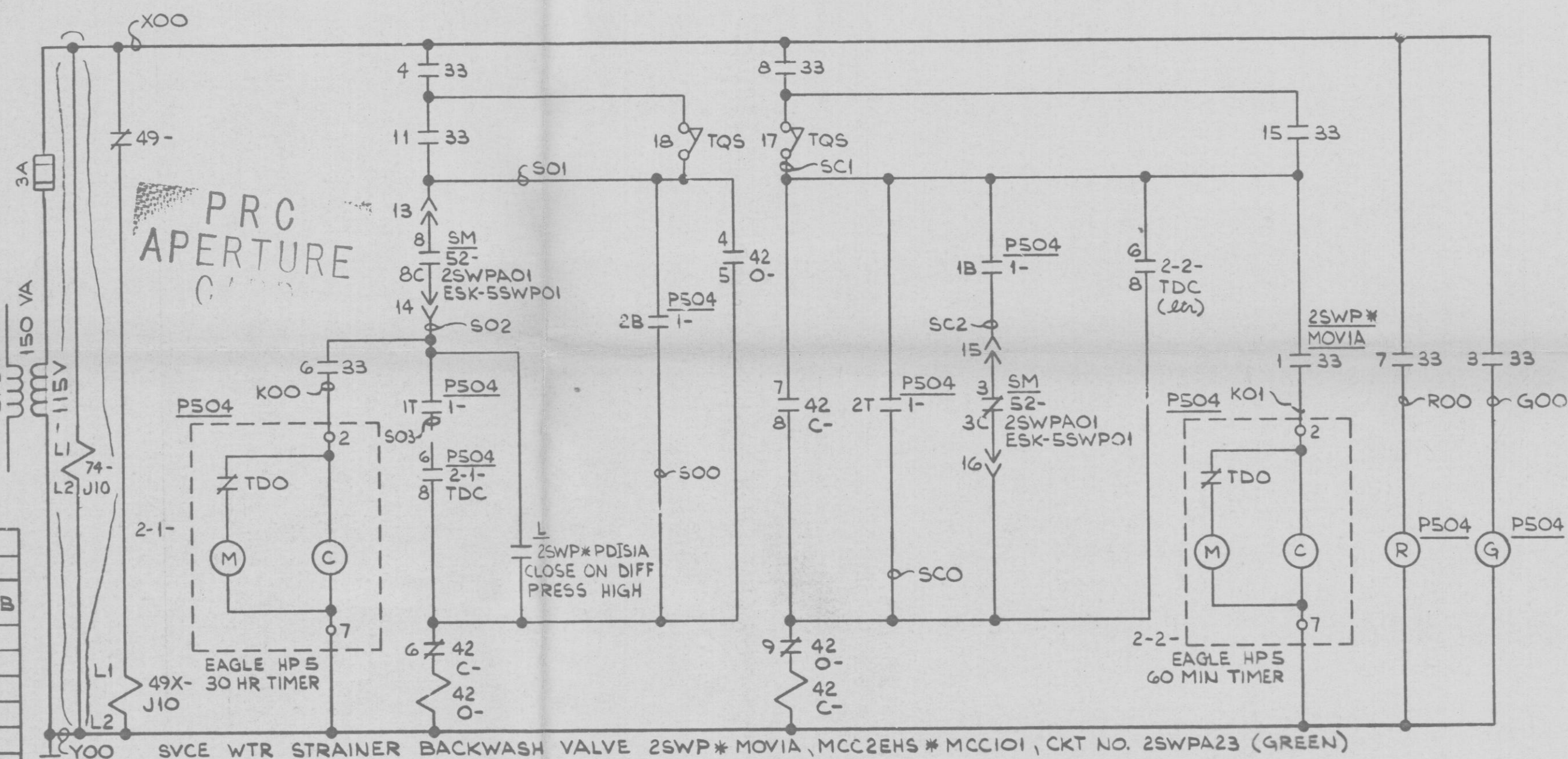


1



LIMIT SWITCH DEVELOPMENT	VALVE POSITION				FUNCTION	
	FULL OPEN	5%	95%	FULL CLOSED	2SWP*MOVIA	2SWP*MOVIB
1					THIS DWG	THIS DWG
2					SPARE	SPARE
3					GRN LT	GRN LT
4					OPEN LIMIT	OPEN LIMIT
5					SPARE	SPARE
6					THIS DWG	THIS DWG
7					RED LT	RED LT
8					CLOSE LIMIT	CLOSE LIMIT
9					SPARE	SPARE
10					SPARE	SPARE
11					BYPASS	BYPASS
12					SPARE	SPARE
13					SPARE	SPARE
14					SPARE	SPARE
15					BYPASS	BYPASS
16					SPARE	SPARE
17	CLOSING TORQUE SWITCH INTERRUPTS CLOSING CYCLE IF MECHANICAL OVERLOAD OCCURS DURING CLOSING CYCLE					
18	OPENING TORQUE SWITCH INTERRUPTS OPENING CYCLE IF MECHANICAL OVERLOAD OCCURS DURING OPENING CYCLE					



CS 6-4-82
1-2SWPA23

DETAIL "H2"

ESK 3B

SPARE

NUCLEAR SAFETY RELATED
QA CAT I

AC ELEM DIAG-600V MCC CKTS
SVCE WTR STR BACKWASH VALVES
NINE MILE POINT NUCLEAR STATION-UNIT 2
NIAGARA MOHAWK POWER CORPORATION

STONE & WEBSTER ENGINEERING CORPORATION

12177-ESK-6SWP21 SH 1 OF 2

D