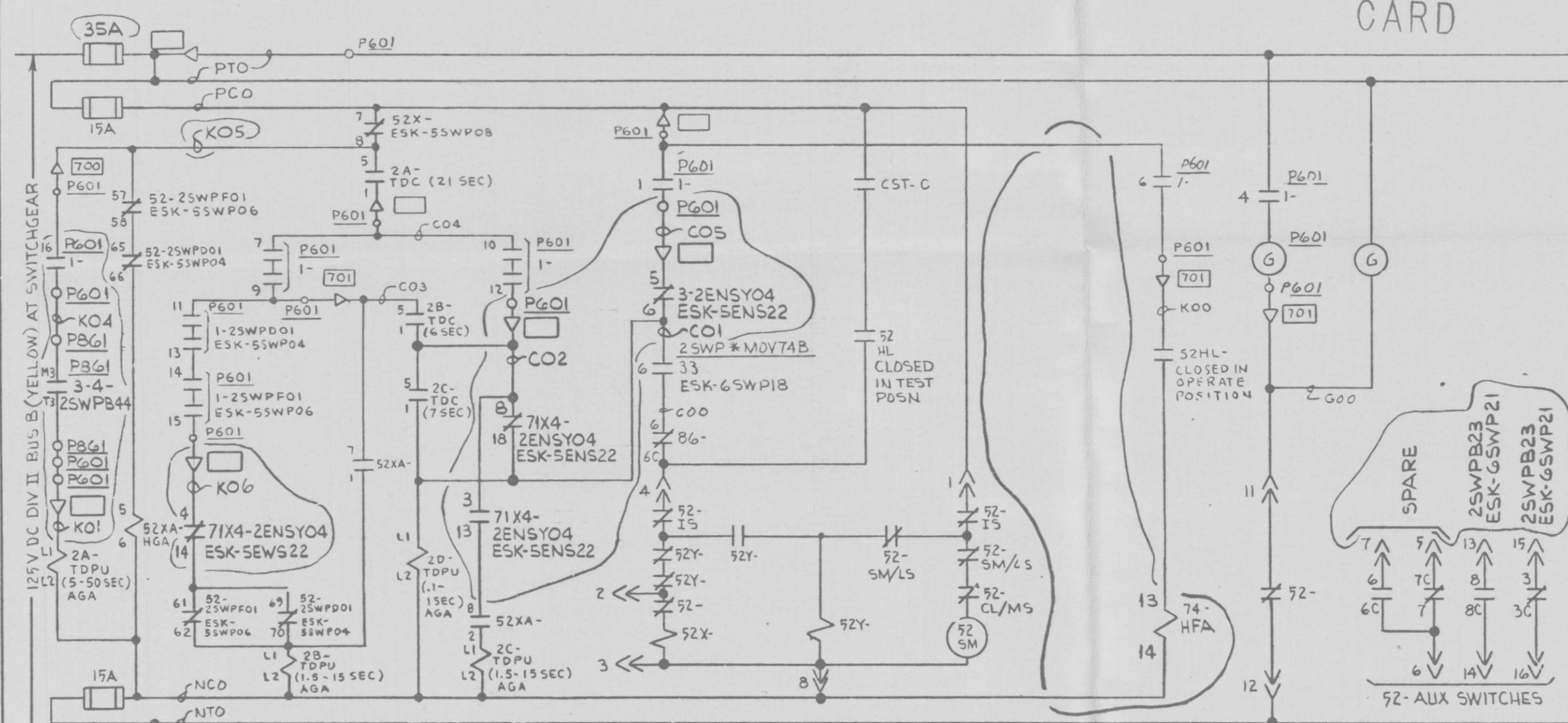
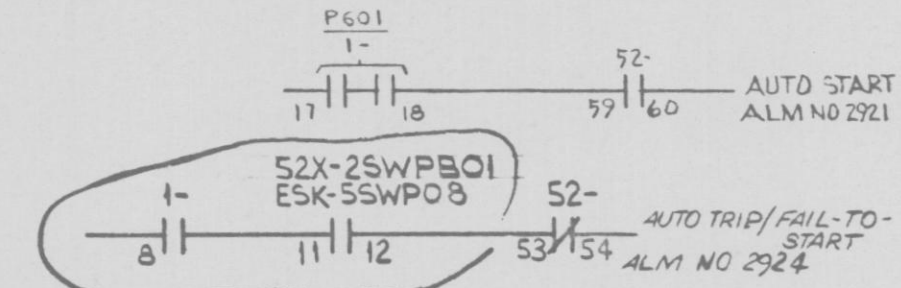
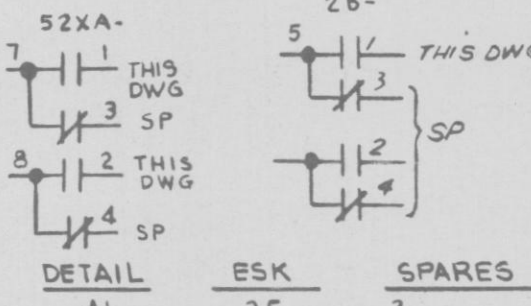
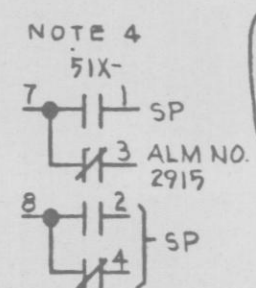
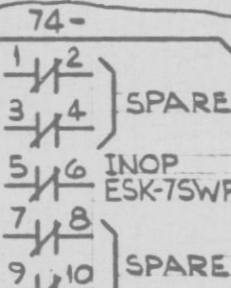
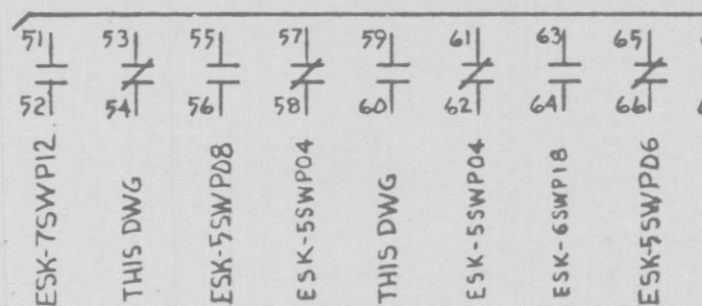


# PRC APERTURE CARD



SERVICE WATER PUMP 2SWP\*PIB CKT 2SWPBDI(YELLOW) SWGR. NO. 2ENS\*SWG103

52-STA AUX SWITCHES



- NOTES:
1. ALL EQUIPMENT LOCATED AT SWGR UNLESS OTHERWISE NOTED
  2. LOGIC DIAG LSK 9-10A
  3. REMOTE SHUTDOWN REQUIREMENTS LATER
  4. COIL SHOWN ON ESK-5SWP08
- NUCLEAR SAFETY RELATED  
QA CAT I

DC ELEM DIAG-4.16 KV SWGR CKT  
SERVICE WATER PUMP 1B  
NINE MILE POINT NUCLEAR STATION-UNIT 2  
NIAGARA MOHAWK POWER CORPORATION  
STONE & WEBSTER ENGINEERING CORPORATION  
12177-ESK-5SWP02

DESIGN	CONTROL	ISSUE	REV	DATE	BY	CHK	APP	REV	DATE	BY	CHK	APP	REV	DATE	BY	CHK	APP
6	5	INCORP. EDCR G40244	1	3/4/77	JRM			1	12-28-77	M			2	3/12/77	M		

D