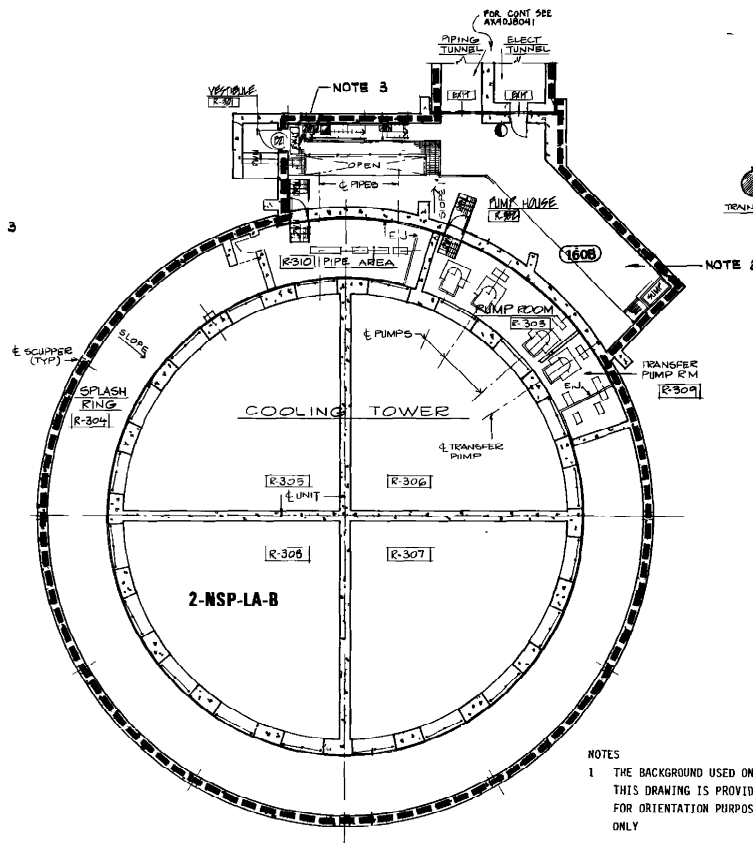
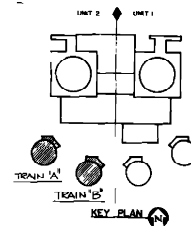


PLAN - GROUND LEVEL - TRAIN "A"



PLAN - GROUND LEVEL - TRAIN "B"



- NOTES
- 1 THE BACKGROUND USED ON THIS DRAWING IS PROVIDED FOR ORIENTATION PURPOSES ONLY
 - 2 EXTERIOR AREA BOUNDARY BARRIER SHOWN RATED ONLY TO ASSURE INSTALLATION OF CONDUIT INTERNAL SEALS WHERE BELOW GRADE DUCT BANKS INTERCONNECT FIRE AREAS
 - 3 CONDUITS PENETRATING FLOORS AND INTERCONNECTING FIRE AREAS MUST HAVE INTERNAL SEALS (SEE 2X308B6)

LEGEND	
	3 HR RATED FIRE AREA BOUNDARY
	UNRATED FIRE AREA BOUNDARY
	3 HR RATED BOUNDARY
	2 HR RATED BOUNDARY
	PRE ACTION SPRINKLER SYSTEM
	HALON SYSTEM
	FIRE HOSE CABINET
	FIRE HOSE REEL
	PORTABLE EXTINGUISHER (DRY CHEMICAL)
	EXIT SIGN LOCATION
	FIRE ALARM PULL BOX
	KNOCK OUT PANEL
	FIRE ZONE BOUNDARY
	FIRE ZONE DESIGNATOR

2126B-L5

Unit
The Unit (1, 2, or A) will be assigned based on the physical foot print of the FZ not the FA

FZ
Plant FZ shown on AX4DJ8000 series drawings, calculations, etc.

"E4" Code
Shown on AX4DJ8000 series drawings

PDMS FZ Naming Key for AX4DJ8000 series drawings

ELECTRICAL CABLE LOCATION CROSS REFERENCE		
FIRE ZONE	UNIT 1 E4 CODE	UNIT 2 E4 CODE
100A	--	W8
100B	--	W9

NO.	VERSIONS	DATE	DR	CHK	APPV
3.0	REVISED PER ABN-V02931, VER. 1.0	5-1-12	JJB	LCF	AAN

SOUTHERN COMPANY SERVICES, INC. BIRMINGHAM, ALABAMA		
GEORGIA POWER COMPANY ALVIN W. VOGTLE NUCLEAR PLANT		
FIRE AREAS NWCW PUMP HOUSE UNIT 2 PLANS & SECTIONS - TRAIN A & B		
SCALE: NONE	DRAWING NO.	VER.
JOB NO. 10604	AX4DJ8048	3.0

**Vogtle Electrical Generating Plant
Unit No. 1 / 2**

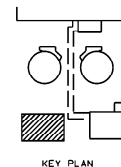
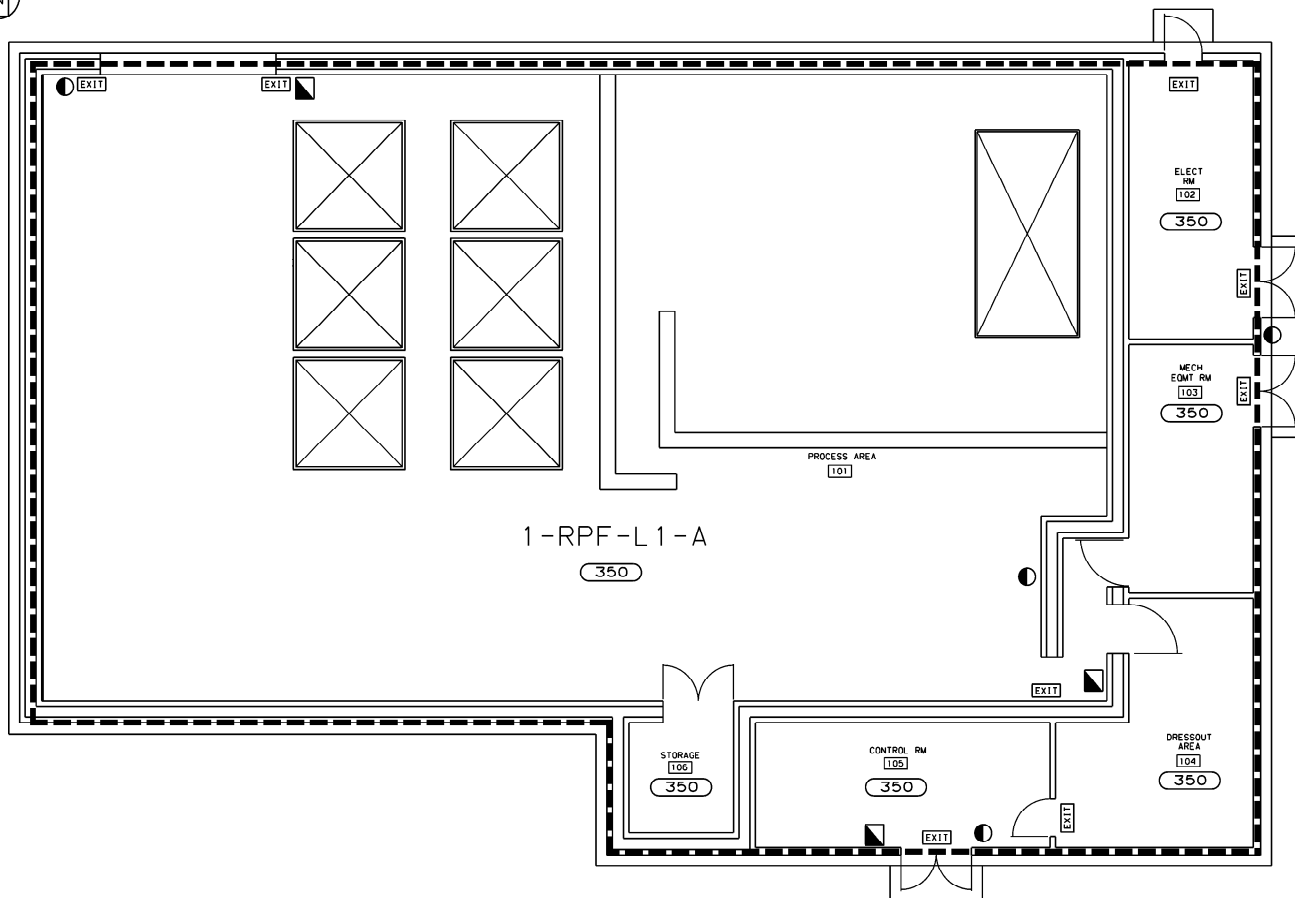
**Document Number:
AX4DJ8049**

**Document Title:
FIRE AREAS DRY ACTIVE WASTE
PROCESSING & STORAGE BUILDING
FLOOR PLANS**

VOIDED

Voided Per ABN C090321201M001, Ver. 1.0

Ver. 1.0



NOTES:

1. THE BACKGROUND USED ON THIS DRAWING IS PROVIDED FOR ORIENTATION PURPOSES ONLY.

LEGEND	
	3 HR FIRE AREA BOUNDARY
	UNRATED FIRE AREA BOUNDARY
	3 HR RATED BOUNDARY
	2 HR RATED BOUNDARY
	PREACTION SPRINKLER SYSTEM
	HALON SYSTEM
	FIRE HOSE CABINET
	FIRE HOSE REEL
	PORTABLE EXTINGUISHER (DRY-CHEMICAL)
	EXIT SIGN LOCATION
	FIRE ALARM PULLBOX
	KNOCK OUT PANEL
	FIRE ZONE BOUNDARY
	FIRE ZONE DESIGNATOR

ELECTRICAL CABLE LOCATION CROSS REFERENCE		
FIRE ZONE	UNIT 1 PDMS FA CODE	UNIT 2 PDMS FA CODE
350	RP	---

Unit 2126B-L5 4.0

The Unit (1,2, or A) will be assigned based on the physical foot print of the FZ not the FA

FZ Plant FZ shown on AX4DJ8000 series drawings, calculations, etc.

"E4" Code Shown on AX4DJ8000 series drawings

PDMS FZ Naming Key for AX4DJ8000 series drawings


SOUTHERN COMPANY SERVICES, INC. BIRMINGHAM, ALABAMA		
GEORGIA POWER COMPANY ALVIN W. VOGTLE NUCLEAR PLANT		
FIRE AREAS RADWASTE PROCESSING FACILITY FLOOR PLAN EL. 217'-6"		

VERSIONS							SCALE: NONE	DRAWING NO.	VER.
4.0	REVISED PER ABN-VO2931, VER. 1.0	5-1-12	JJB	LCF	AAN		JOB NO. 10604	AX4DJ8050	4.0
NO.		DATE	DR	CHK	APPV				

This drawing and the design it covers are the property of BUCHTEL. They are reproduced, copied, loaned, exhibited, or used except in the limited way and private



ITEM	TRAIN	LOCATION	FAN	CNTL. SW.	TEMP. S.W.	TEMP SW/SOL VLV	DAMPER
1	—	FILT. RM. TRAIN A	—	—	—	1-TSHL-12311	
2	—	B	—	—	—	1- -12308	
3	—	A	—	—	—	2- -12311	
4	—	B	—	—	—	2- -12308	
5	A	CHILLER RM. TR. A	1-1531- B7 -002-M01	1-HS-12303	1-TIS-12303	1- -12304	
6	B	B	1- -004	1- -12300	1- -12300	1- -12301	
7	A	A	2- -002	2- -12303	2- -12303	2- -12304	
8	B	B	2- -004	2- -12300	2- -12300	2- -12301	
9	—	HVAC RM.	A- -005	A -12314	A-TS-12314	(SOL VLV)A-TY-12314	
10	—	A	A- -006	A -12316	A- -12316	(SOL VLV)A-TY-12316	

		
<h1 style="text-align: center;">BECHTEL</h1> <p style="text-align: center;">LOS ANGELES</p>		
<p style="text-align: center;">GEORGIA POWER COMPANY ALVIN W. VOGTLE NUCLEAR PLANT</p>		
<p style="text-align: center;">CONTROL LOGIC DIAGRAM CONTROL BUILDING EQUIPMENT ROOM LEVEL 3 & 4 HVAC SYSTEM</p>		
SCALE: NONE	DRAWING NO.	REV
JOB NO. 9510	<div style="border: 1px solid black; padding: 5px; display: inline-block;">AX5DN008-1</div>	4

SIZE B 11 x 17

~~CONFIDENTIAL~~ 12-19-91

TABLE 1

TRAIN	EQUIPMENT NO.	REFERENCE LOGIC DIAG.
UNIT 1 A	1-HV-12114	AX5DN032-1
	CRI-A	AX5DN020-4
UNIT 1 B	1-HV-12115	AX5DN032-1
	CRI-B	AX5DN020-4
UNIT 2 A	2-HV-12114	AX5DN032-1
	CRI-A	AX5DN020-4
UNIT 2 B	2-HV-12115	AX5DN032-1
	CRI-B	AX5DN020-4


△						
△						
△	INCORPORATED PER DCP 89-V1N0297	10-14-96	ELC	GLB	WFP	✕
△	ISSUED FOR CONSTRUCTION	SEE MICROFILM FOR	SIGNATURES			
NO.	REVISIONS	DATE	DR	CHK	APPV	DTL

NOTE:
1. LOGIC DIAGRAM SHOWN ON
DWG AX5DN020-8

REF. DWGS
PEID AX4DB206-1,2&3

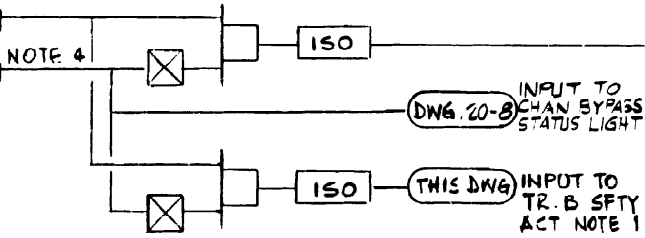
NUCLEAR SAFETY RELATED

TOXIC GAS SAFETY ACTUATION "Q"

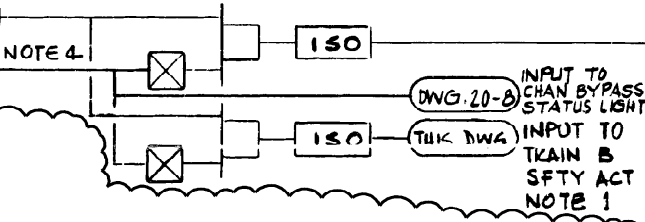
 SOUTHERN COMPANY SERVICES, INC. BIRMINGHAM, ALABAMA		
GEORGIA POWER COMPANY ALVIN W. VOGTLE NUCLEAR PLANT		
CONTROL LOGIC DIAGRAM BOP SAFETY ACTUATION SYSTEM		
SCALE: NONE	DRAWING NO.	REV
JOB NO. 10604	AX5DN020-10	5

AUTO ACTUATION

FHB EXH DUCT RAD HIGH
A-RX-2532 CH 1
QESF, A-HS-2532C
TEST BLOCK, CHAN 1



FHB EXH DUCT RAD HIGH
A-RX-2533 CH 2
QESF, A-HS-2532C
TEST BLOCK, CHAN 2 (M)



MANUAL ACTUATION

QHVC A-HS-2532A
ACTUATE (P)

QHVC A-HS-2533A
ACTUATE (P)

RESET/OVERRIDE

QHVC A-HS-2532B
RESET/OVERRIDE (P)

NOTE 4

NOTE 4

NOTE 4

NOTE 4

THIS DNG INPUT TO TR B SFTY ACT NOTE 1

THIS DNG INPUT TO TR B SFTY ACT NOTE 1

REF. DWG:

P&ID AX4B204-1,2

E.D. AX3D-BG-E02MIN

NOTE:

4. ISOLATED CONTACT PROVIDED THROUGH TANDEM TWO TRAIN HAND SWITCH

NUCLEAR SAFETY RELATED

FUEL HANDLING BLDG HVAC SFTY ACT "Q"

SOUTHERN COMPANY SERVICES, INC.
BIRMINGHAM, ALABAMA

GEORGIA POWER COMPANY
ALVIN W. VOGTLE NUCLEAR PLANT

CONTROL LOGIC DIAGRAM
BOP SAFETY ACTUATION SYSTEM

SCALE: NONE

DRAWING NO.

REV

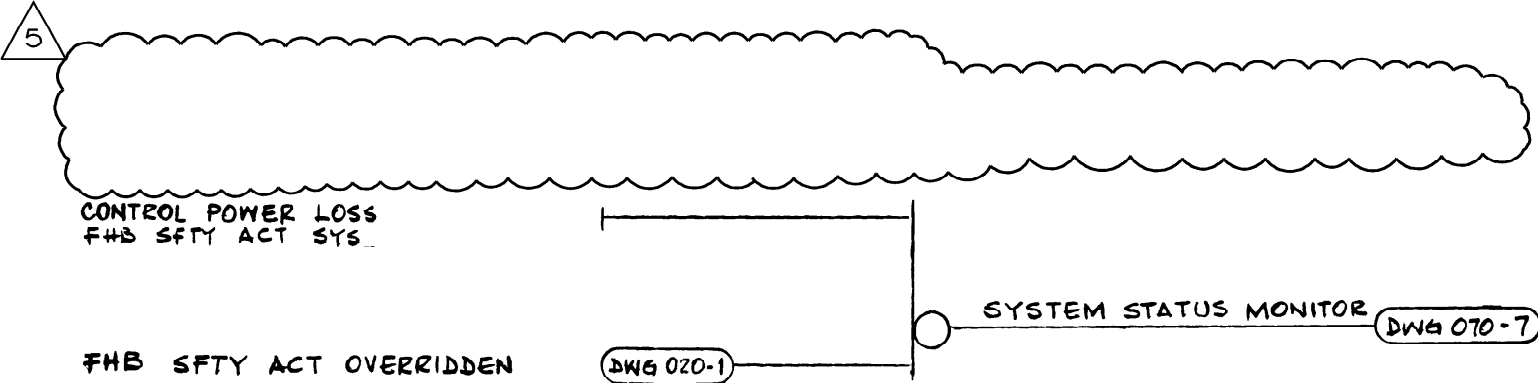
JOB NO. 10604

AX5DN020-1

6

△							
△							
△	INCORPORATED PER DCP 96-VAN0039	05-15-00	CD	SM	MWD		
△	ISSUED FOR CONSTRUCTION	SEE MICROFILM FOR	SIGNATURES				
NO.	REVISIONS	DATE	DR	CHK	APPV	DTL	


ALARM & MONITOR



NOTE:
1. SYSTEM STATUS MONITOR & ALARM
TRAIN A SHOWN, TRAIN B
SIMILAR AS TABULATED
ON DWG AX5DN020-3

REF. DWG.
P E I D AX4DB204-1, 2
E. D. AX3D-BG-E02M,N

NUCLEAR SAFETY RELATED
FUEL HANDLING BLDG. HVAC SFTY ACT "Q"


SOUTHERN COMPANY SERVICES, INC.
BIRMINGHAM, ALABAMA

GEORGIA POWER COMPANY
ALVIN W. VOGTLE NUCLEAR PLANT

CONTROL LOGIC DIAGRAM
BOP SAFETY ACTUATION SYSTEM

SCALE: NONE	DRAWING NO.	REV
JOB NO. 10604	AX5DN020-2	5


△						
△						
△	INCORPORATED PER DCP 96-VAN0039	05-16-00	CD	SM	MWD	✕
△	ISSUED FOR CONSTRUCTION	SEE MICROFILM FOR SIGNATURES				
NO.	REVISIONS	DATE	DR	CHK	APPV	DTL

TRAIN	EQUIPMENT NO.	REFERENCE LOGIC DIAG.	(QHVC) MANUAL ACT SW	(QHVC) RESET OVERRIDE SW	(QESF) TEST SW	RADIATION SFTY ACT.
A	A-1542-N7-001-MOI	AX5DN027-1		A-HS-2532B		
	A-HY-2529	AX5DN029-1				
	2535					
	12481					
	12479					
B	A-1542-N7-002-MOI	AX5DN027-1	A-HS-2532A	A-HS-2533B	A-HS-2532C 	A-RX-2532 A-RX-2533
	A-HY-2528	AX5DN029-1	A-HS-2533A			
	2534					
	12482					
	12480					

NOTE:
1 LOGIC DIAGRAM SHOWN ON
DWS AX5DN020-1 AND
AX5DN020-2

REF. DWGS:
P & ID AX4DB204-1 & 2
E.D AX5D-BG-EC2M,N

NUCLEAR SAFETY RELATED
FUEL HANDLING BLDG HVAC SFTY ACT "Q"

 SOUTHERN COMPANY SERVICES, INC. BIRMINGHAM, ALABAMA		
GEORGIA POWER COMPANY ALVIN W. VOGTLE NUCLEAR PLANT		
CONTROL LOGIC DIAGRAM BOP SAFETY ACTUATION SYSTEM		
SCALE: NONE	DRAWING NO.	REV
JOB NO. 10604	AX5DN020-3	3

△						
△						
△	INCORPORATED PER DCP 96-VAN0039	05-16-00	CD	SM	MWD	✕
△	ISSUED FOR CONSTRUCTION	SEE MICROFILM FOR SIGNATURES				
NO.	REVISIONS	DATE	DR	CHK	APPV	DTL

AUTO ACTUATION

CNTL. RM. OSA INTAKE
RAD. HIGH 1-RY-12116
CH.1
QESF. 1-HS-12195C
TEST BLOCK CHAN 1 (M)

CNTL. RM. OSA INTAKE
RAD. HIGH 1-RY-12117
CH.2
QESF. 1-HS-12195C
TEST BLOCK CHAN 2 (M)

SAFETY INJECTION SI-A

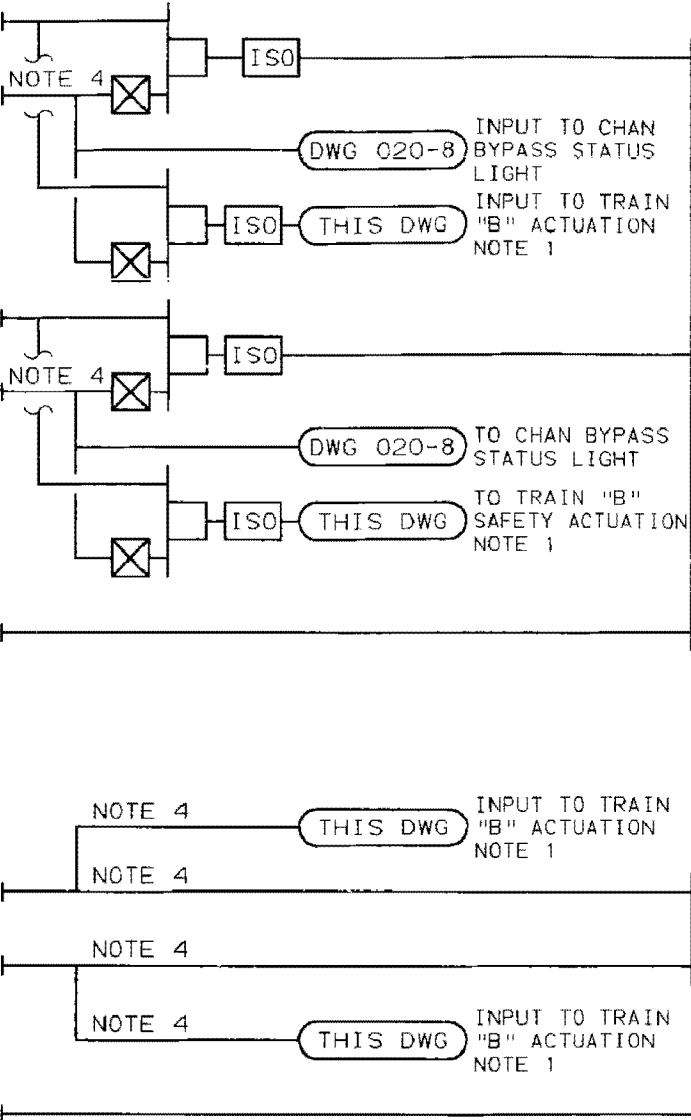
MANUAL ACTUATION

QHVC. 1-HS-12195A
ACTUATE (P)

QHVC. 1-HS-12196A
ACTUATE (P)

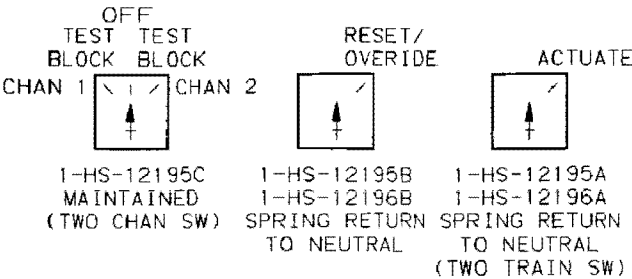
RESET/OVERRIDE

QHVC. 1-HS-12195B
RESET/OVERRIDE (P)



NOTES: (CONT'D)

7. UNIT 1 TRAIN A TSC HVAC SYS SAFETY ACTUATON
SHOWN. TRAIN B & UNIT 2 SIMILAR.

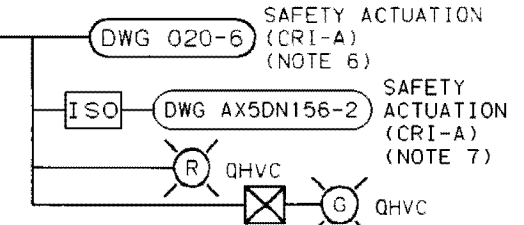


NOTES:

1. UNIT 1 TRAIN "A" CNTL RM HVAC SYS SAFETY ACTUATION SHOWN. TRAIN "B" & UNIT 2 SIMILAR AS TABULATED IN TABLE 1 ON DWG. AX5DN020-6.
2. TESTING OF RADIATION INPUT SIGNAL SHALL BE THROUGH RADIATION MONITOR PNL.
3. TESTING OF S.I. INPUT SIGNAL SHALL BE THROUGH W PROTECTION TEST CAB. REFER TO W TEST PROCED.X6AX01-272 SEC 10.9.
4. ISOLATED CONTACT PROVIDED THROUGH TANDEM TWO CHAN HAND SWITCH.
5. DELETED
6. UNIT 1, CRI-A OUTPUTS SHOWN ON DRAWING AX5DN020-6 "REFERENCE LOGIC DIAGRAM". TRAIN "B" AND UNIT 2 SIMILAR AS TABULATED ON DRAWING AX5DN020-6.

REFERENCE DRAWINGS:

P&ID AX4DB206-1,2 & 3
E.D. 1X3D-BG-CO3C,D
2X3D-BG-CO3C,D
AX3D-BG-CO8E



CONTROL ROOM HVAC SFTY ACT.

NUCLEAR SAFETY RELATED [Q]

SOUTHERN COMPANY SERVICES, INC.
BIRMINGHAM, ALABAMA

GEORGIA POWER COMPANY
ALVIN W. VOGTLE NUCLEAR PLANT

CONTROL LOGIC DIAGRAM
BOP SAFETY ACTUATION SYSTEM

△						
△						
△	INCORP. PER DCP 89-V1N0297.	10-14-96	CD	GLB	WFP	✗
△	ISSUED FOR CONSTRUCTION	SEE MICROFILM FOR	SIGNATURES			
NO.	REVISIONS	DATE	DR	CHK	APPV	DTL

SCALE: NONE	DRAWING NO.	REV
JOB NO. 10604	AX5DN020-4	10

14.5X

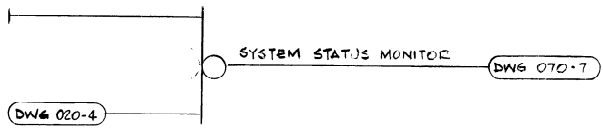
DATE: 10/21/86
CAMERA OPERATOR: [Signature]
SECTION SUPERVISOR: [Signature]

This drawing and the design it covers are the property of BECHTEL. They are loaned to you on the understanding that they will not be reproduced, copied, loaned, exhibited, or used except in the limited way and private use permitted by any written consent given by the lender to the borrower.

ALARM AND MONITOR

CONTROL POWER LOSS CNTRL RM SFTY ACTUATION SYSTEM

CONTROL ROOM SFTY ACT CYCLED IN



NOTE:

1. SYSTEM STATUS MONITOR TRAIN A SHOWN TRAIN B SIMILAR AS TABULATED ON DWG AX5DN020-6

REF DWGS

1. EID AX4DB206-1 2. E 3
EID 1XSD-261-0030 2
2XSD-261-0030 2

NUCLEAR SAFETY RELATED

CONTROL ROOM HVAC SFTY ACT "Q"

NO.	REVISIONS	DATE	DR	CHK.	SUPV.	ENGL	EGS	CHF. E.	P. E.	Q. A. E.
1	INCORPORATED DCN #1	10-30-86	ZEP							
2	REVISED AS INDICATED	11/1/86	FL	FAL						
3	ISSUED FOR CONSTRUCTION	5/31/79	HL	FAL	PK MKK					

BECHTEL LOS ANGELES		
GEORGIA POWER COMPANY ALVIN W. VOGTLE NUCLEAR PLANT		
CONTROL LOGIC DIAGRAM BOP SAFETY ACTUATION SYSTEM		
SCALE: NONE	DRAWING NO.	REV.
JOB NO. 9510	AX5DN020-5	2

I CERTIFY THAT THE IMAGE CONTAINED ON THIS FRAME WAS MADE IN THE NORMAL AND REGULAR COURSE OF BUSINESS, ON THE DATE STATED BELOW AND THAT IT IS AN ACCURATE REPRODUCTION OF THE DOCUMENT SUBMITTED TO MICROGRAPHICS
DATE: 10/21/86
CAMERA OPERATOR: [Signature]
SECTION SUPERVISOR: [Signature]

THIS DRAWING AND THE DESIGN IT COVERS ARE THE PROPERTY OF SCS. THEY ARE MERELY LOANED AND ON THE BORROWER'S EXPRESS AGREEMENT THAT THEY WILL NOT BE REPRODUCED, COPIED, LOANED, EXHIBITED, OR USED EXCEPT IN THE LIMITED WAY AND PRIVATE USE PERMITTED BY ANY WRITTEN CONSENT GIVEN BY THE LENDER TO THE BORROWER.

TRAIN	EQUIPMENT NO.	REFERENCE LOGIC DIAGRAM	(QHVC) MANUAL ACT. SW	(QHVC) REST OVERRIDE SW	(QESF) TEST BLOCK SW	RAD. SFTY ACT	SFTY INJECTION
UNIT 1 A	1-1531-N7-001-M01	AX5DN031-1					
	A-HY-12162A	AX5DN037-1					
	CONTROL ROOM DIFFERENTIAL PRESSURE ALARM FOR 1-PDIS-12160	AX5DN032-2		1-HS-12195B			UNIT 1 SI-A
	1-1592-P7-001-M01	1X5DN060-1					
	1-1592-C7-001-000	1X5DN060-2					
UNIT 1 B	1-HV-12146 AND 2-HV-12146	AX5DN032-3	1-HS-12195A		1-HS-12195C	1-RX-12116	
	1-1531-N7-002-M01	AX5DN031-1	1-HS-12196A			1-RX-12117	
	A-HY-12163A	AX5DN037-1					
	CONTROL ROOM DIFFERENTIAL PRESSURE ALARM FOR 1-PDIS-12160	AX5DN032-2		1-HS-12196B			UNIT 1 SI-B
	1-1592-P7-002-M01	1X5DN060-1					
UNIT 2 A	1-1592-C7-002-000	1X5DN060-2					
	1-HV-12147 AND 2-HV-12147	AX5DN032-3					
	2-1531-N7-001-M01	AX5DN031-1					
	A-HY-12162B	AX5DN037-1					
	CONTROL ROOM DIFFERENTIAL PRESSURE ALARM FOR 2-PDIS-12160	AX5DN032-2		2-HS-12195B			UNIT 2 SI-A
UNIT 2 B	2-1592-P7-001-M01	2X5DN060-1					
	2-1592-C7-001-000	2X5DN060-2					
	2-HV-12146 AND 1-HV-12146	AX5DN032-3	2-HS-12195A		2-HS-12195C	2-RX-12116	
	2-1531-N7-002-M01	AX5DN031-1	2-HS-12196A			2-RX-12117	
	A-HY-12163B	AX5DN037-1					
UNIT 2 B	CONTROL ROOM DIFFERENTIAL PRESSURE ALARM FOR 2-PDIS-12160	AX5DN032-2		2-HS-12196B			UNIT 2 SI-B
	2-1592-P7-002-M01	2X5DN060-1					
	2-1592-C7-002-000	2X5DN060-2					
	2-HV-12147 AND 1-HV-12147	AX5DN032-3					

NOTE:

1. REFER TO LOGIC DIAGRAM AX5DN020-4 & AX5DN020-5


REF. DWGS.

P&ID AX4DB206-1, 2 & 3

E.D. 1X3D-BG-C03C, D
2X3D-BG-C03C, D

CONTROL ROOM HVAC SFTY ACT

NUCLEAR SAFETY RELATED ☒

 SOUTHERN COMPANY SERVICES, INC.
BIRMINGHAM, ALABAMA
GEORGIA POWER COMPANY
ALVIN W. VOGTLE NUCLEAR PLANT

CONTROL LOGIC DIAGRAM
BOP SAFETY ACTUATION SYSTEM

△												ENG MGR
△	INCORPORATED	ABN-03534	10-14-79	JMS	HEW	JBL	JP	XX	XX	XX	XX	
△	REVISIONS		DATE	DR	CHK	RE	DM	DM	DM	PDM	XX	
△	ISSUED FOR CONSTRUCTION		5-31-79		SEE MICROFILM FOR SIGNATURES							DATE
NO.	REVISIONS		DATE	DR	CHK	SUP'V	ECL	EGS	CHF	E.P.E.	D.A.E.	

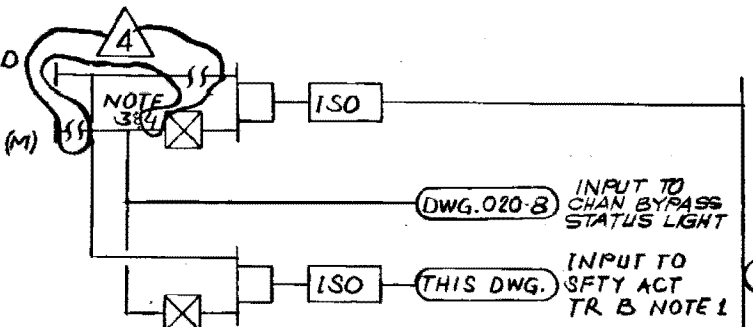
SCALE: NONE	DRAWING NO.	REV
JOB NO. 10604	AX5DN020-6	3

SIZE B 11x17

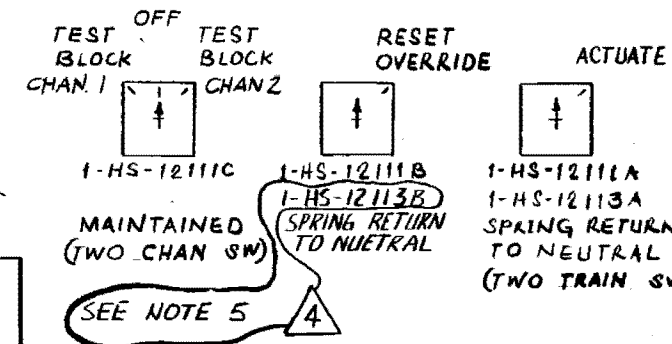
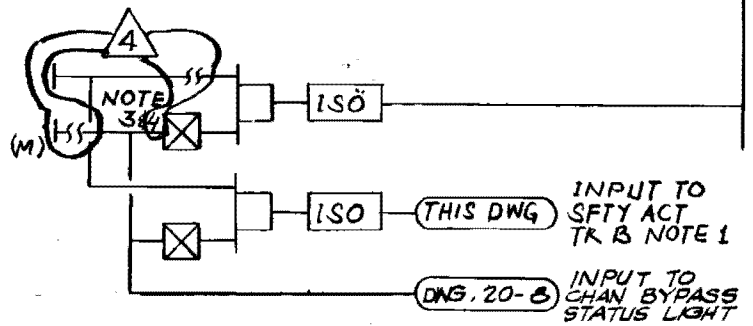
This drawing and the design it covers are the property of BECHTEL. They are loaned and on the borrower's express agreement that they will not be re-produced, copied, loaned, exhibited, or used except in the limited way and private use permitted by any written consent given by the lender to the borrower.

AUTO ACTUATION

CHLORINE DETECTED
1-ATIS-12110 CH.2
QESF, 1-HS-12111C
TEST BLOCK CHAN 2 (M)



CHLORINE DETECTED
1-ATIS-12112 CH.1
QESF, 1-HS-12111C
TEST BLOCK CHAN 1 (M)



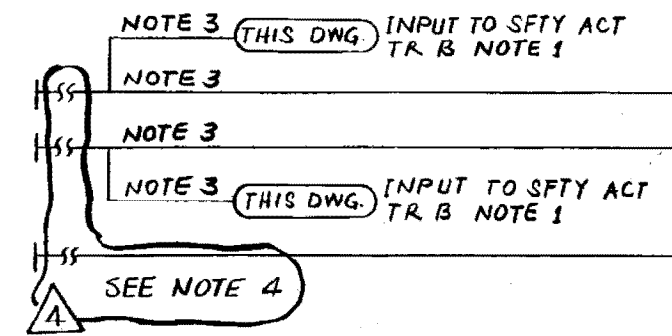
- NOTE:
1. UNIT 1 TRAIN A TOXIC GAS SIGNAL SHOWN. UNIT 1 TRAIN B, UNIT 2 TRAIN A AND UNIT 2 TRAIN B SIMILAR AS LISTED IN TABLE 1 ON DWG AX5DN020-10
 2. DURING TESTING, TO BLOCK ONE SAFETY TRAIN IT SHALL BE THROUGH HAND SWITCHES 1-HS-12111C.
 3. ISOLATED OUTPUT CONTACT PROVIDED THROUGH TANDEM TWO CHAN HANDSWITCH.
 4. FOR UNIT 2, TOXIC GAS (CHLORINE) DETECTION CIRCUIT IS DISABLED; CONTROL ROOM ISOLATION (CRT) HAS NO CONNECTION TO THIS SIGNAL.
 5. "TEST BLOCK", "RESET OVERRIDE", AND "ACTUATE" SWITCHES ARE DISABLED AT THE QHVC PANEL FOR UNIT 2.

MANUAL ACTUATION

QHVC, 1-HS-12111A
ACTUATE (P)
QHVC, 1-HS-12113A
ACTUATE (P)

RESET/OVERRIDE

QHVC, 1-HS-12111B
RESET/OVERRIDE (P)



REF. DWGS
PEID AX4DB206-1,2&3
E.D 1X3D-BG-C04E.F
VIP X5AA04-1B

NUCLEAR SAFETY RELATED
TOXIC GAS SIGNAL "Q"

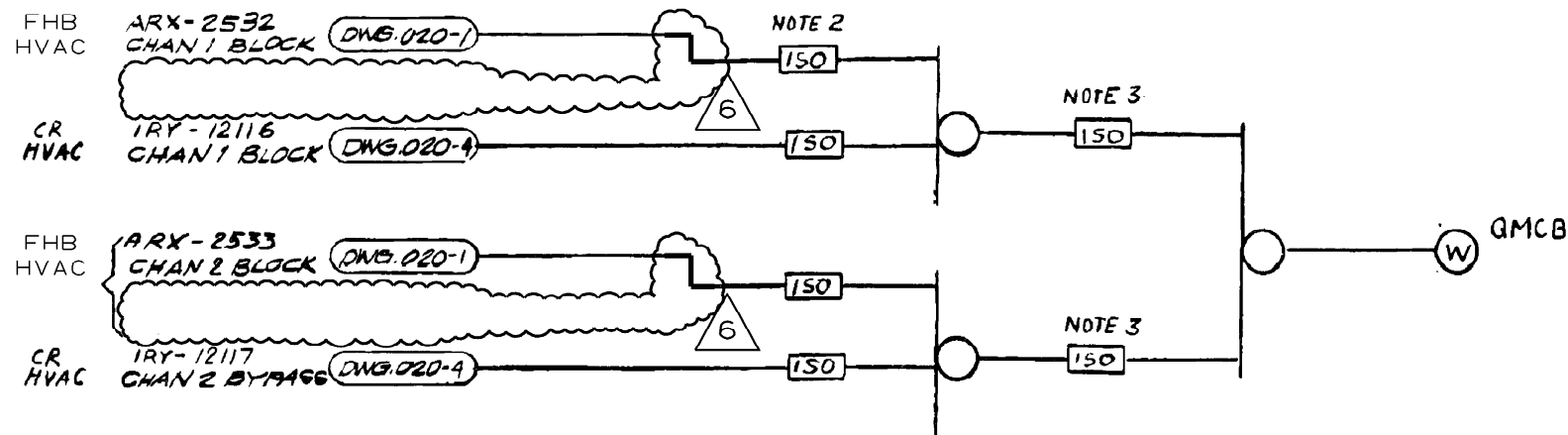
BECHTEL
LOS ANGELES

GEORGIA POWER COMPANY
ALVIN W. VOGTLE NUCLEAR PLANT

CONTROL LOGIC DIAGRAM
BOP SAFETY ACTUATION SYSTEM

SCALE: NONE	DRAWING NO.	REV.
JOB NO. 9510	AX5DN020-7	4

NO.	REVISIONS	DATE	DR	CHK	SUPV.	EGL	EGS	CHF. E.	P. E.	Q. A. E.
1	INCORPORATED DCN #1 & 2 AND CORRECTED SIGNAL DESCRIPTION	12-9-80	ZED							
2	DELETED H2S INPUT PER LETTER SB4846	2-3-84	ALV	FAL						
3	INCORPORATED DCN #3 (IDCN #35, B20012M)	2-1-89	RSK							
4	ISSUED FOR CONSTRUCTION	3-14-90	SL	FAL						




- NOTE:
1. LOGIC CONTINUATION SHOWN ON DWG AX5DN020-7 AND AX5DN020-9. OTHER NOTES REFER TO DWG AX5DN020-7
 2. CHANEL TO TRAIN ISOLATION DEVICE.
 3. TRAIN TO NON-TRAIN ISOLATION DEVICE.

REF. DWGS.
PEID AX4DB206-1, 2 & 3

NUCLEAR SAFETY RELATED

BOP ESF CHANNEL BYPASS INDICATION "Q"

 SOUTHERN COMPANY SERVICES, INC. BIRMINGHAM, ALABAMA		
GEORGIA POWER COMPANY ALVIN W. VOGTLE NUCLEAR PLANT		
CONTROL LOGIC DIAGRAM BOP SAFETY ACTUATION SYSTEM		
SCALE: NONE	DRAWING NO.	REV
JOB NO. 10604	AX5DN020-8	6

△						
△						
△	INCORPORATED PER DCP 96-VAN0039	05-16-00	CD	SM	MWD	✗
△	ISSUED FOR CONSTRUCTION	SEE MICROFILM FOR	SIGNATURES			
NO.	REVISIONS	DATE	DR	CHK	APPV	DTL

MONITOR & ALARM

CNTL PWR LOSS TOXIC GAS
SFTY ACT TR A

TOXIC GAS SFTY ACT
OVERRIDDEN TR A

HS-1 OFF/TEST

MAJUNCTION CL,

SYS. STATUS MON

DWG. 070-7

SEE NOTE 2

SEE NOTE 2

DWG-020-7

V/PIX5AA04-18-58

150

V/P/X5AA04-18-56

NOTE :

1. SYSTEM STATUS MONITOR
UNIT 1 TRAIN A SHOWN,
UNIT 1 TRAIN B, UNIT 2
TRAIN A AND UNIT 2 TRAIN B
SIMILAR AS TABULATED IN
TABLE 1 ON DWG.
AXSDN020-10.

2. FOR UNIT 2, TOXIC GAS (CHLORINE) DETECTION CIRCUIT IS DISABLED.

REF. DWGS
P&ID AX4DB206-1, 2 & 3
E. D. 1X3D-BG-C04E, F
2X3D-BG-C04E, F

NUCLEAR SAFETY RELATED

TOXIC GAS SAFETY ACTUATION "D"



BECHTEL
LOS ANGELES

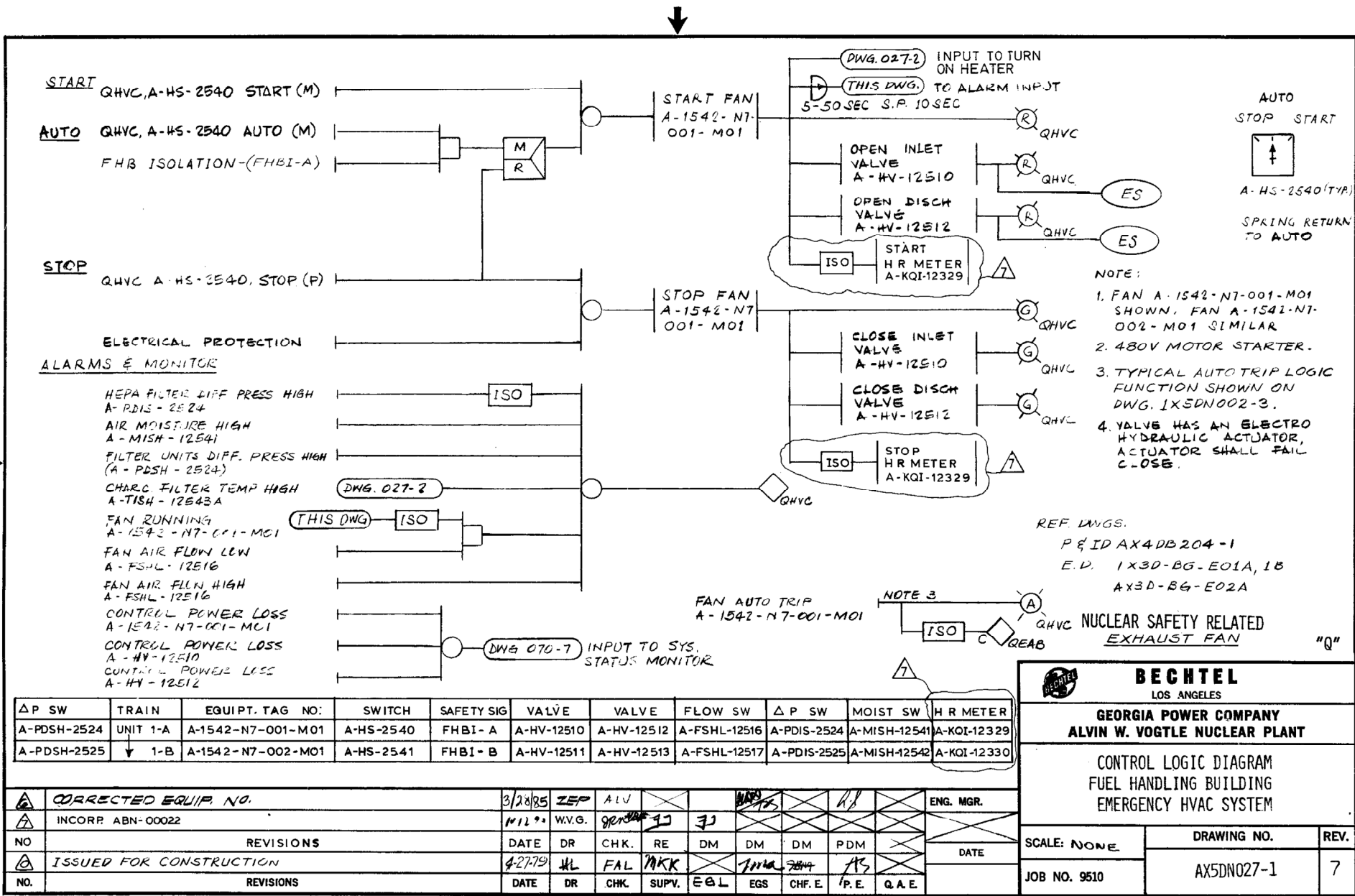
**GEORGIA POWER COMPANY
ALVIN W. VOGTLE NUCLEAR PLANT**

CONTROL LOGIC DIAGRAM BOP SAFETY ACTUATION SYSTEM

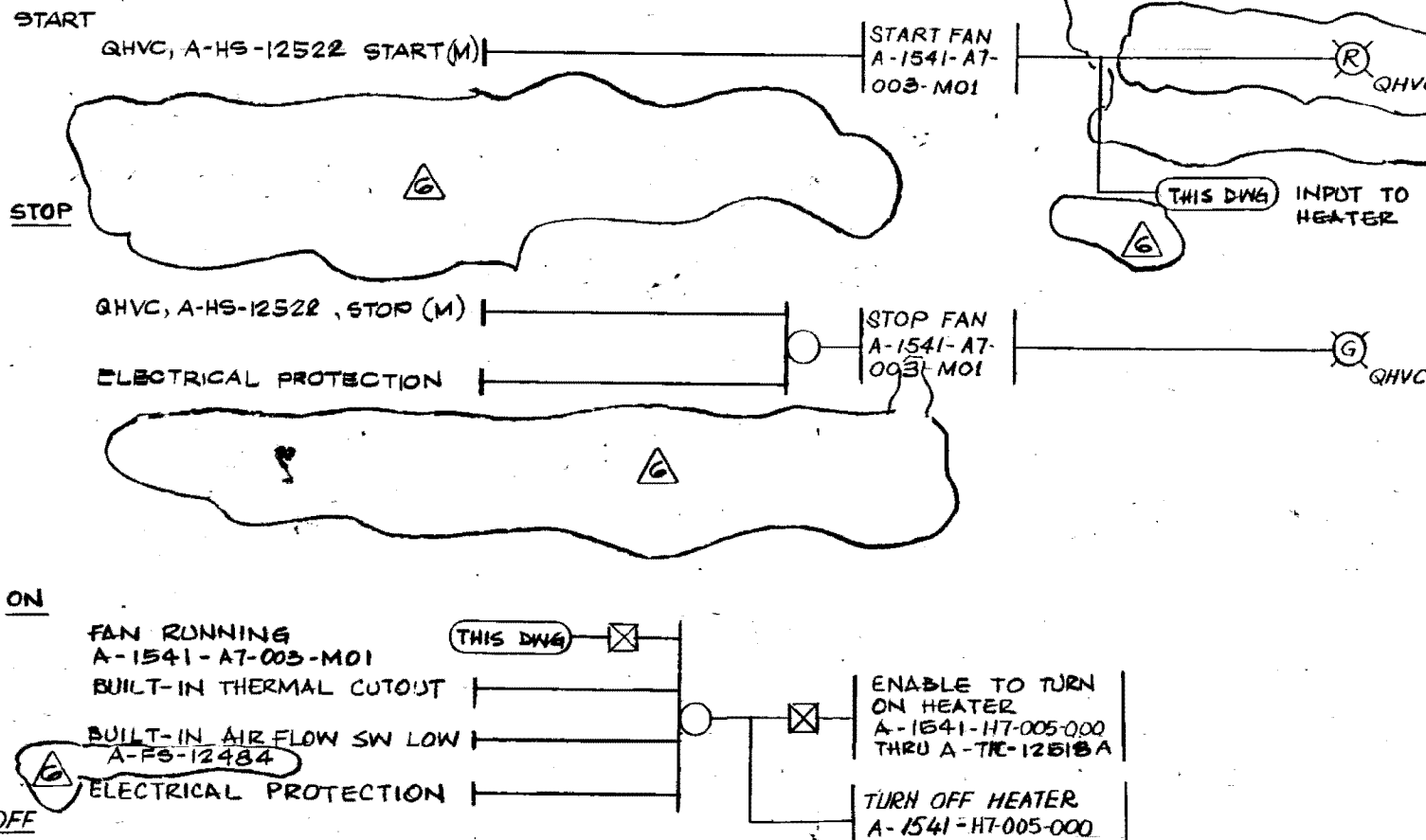
DELETED H2S INPUT PER LETTER 584846	2-3-84	ALV	FAL			PC2	PC2						ENG. MGR.
INCORPORATE DCN #2 (IDCN #37, B20012M)	2-1-89	RSK	RUT			R00	R00						
INCORPORATED DCN #1	10-30-80	ZEP				WY	WY						
ISSUED FOR CONSTRUCTION	3-11-80	ALV	FAL			KCB	WY						DATE
NO.	REVISIONS	DATE	DR	CHK	SUPV.	EGL	EGS	CHF. E	P. E	Q. A. E			

BM 9510 PEID 206-1 REV. 206-2 REV. PEID 206-3 REV

SIZE B 11 x 17



This drawing and the design it covers are the property of BECHTEL. They are loaned and on the borrower's express agreement that they will not be re-produced, copied, loaned, exhibited, or used except in the limited way and private use permitted by any written consent given by the lender to the borrower.



STOP START

A-HS-12522
A-HS-12523
MAINTAINED

NOTE:

1. FAN A-1541-A7-003-MOI SHOWN. OTHER FAN SIMILAR AS LISTED IN TABLE 1
2. HEATER A-1541-H7-005-000 SHOWN. OTHER HEATER LISTED IN TABLE 2 SIMILAR
3. 480 V MOTOR STARTER
4. HEATER SHALL TURN ON PROVIDED BUILT-IN PERMISSIVES ARE SATISFIED AS SHOWN

REF. DWGS.

P&ID AX4DB204-1
E.D. AX3D-BG- E018, 01H, 01K

TABLE 1

AREA	EQUIP. TAG NO.	SWITCH
FUEL POOL	A-1541-A7-003-MOI	A-HS-12522
FHB CORRIDOR	A-1541-A7-004-MOI	A-HS-12523

TABLE 2

FLOW SW	HEATER	FAN RUNNING	TEMP CNTL
A-FS-12484	A-1541-H7-005-000	A-1541-A7-003-MOI	A-TIC-12518A
A-FS-12485	A-1541-H7-006-000	A-1541-A7-004-MOI	A-TIC-12519A

MOVED FAN A-1541-A7-005 TO AX5DN028-2 & REV AS SHOWN	3/6/85	ZEP	ALV	MA								ENG. MGR.
ADDED SW TAG NUMBER	1-17-85	ALV	ALV	MA								
CORRECTED EQUIPMENT TAG NO.	6-13-83	ARS	FAL									
ISSUED FOR CONSTRUCTION	4-27-79	AL	FAL	MKK								
NO.	REVISIONS	DATE	DR	CHK	SUPV.	EGL	EGS	CHF. E.	P.E.	Q.A.E.		

BECHTEL LOS ANGELES		
GEORGIA POWER COMPANY ALVIN W. VOGTLE NUCLEAR PLANT		
CONTROL LOGIC DIAGRAM FUEL HANDLING BUILDING AIR CIRCULATOR FANS		
SCALE: NONE	DRAWING NO.	REV.
JOB NO. 9510	AX5DN028-1	6

P&ID 204-1 REV.3

SIZE B 11x17

SCANNED DATE 11-19-91

This drawing and the design it covers are the property of BECHTEL. They are loaned and on the borrower's express agreement that they will not be reproduced, copied, loaned, exhibited, or used except in the limited way and private use permitted by any written consent given by the lender to the borrower.

OPEN QHVC, A-HS-252B, OPEN (P)

AUTO

FHB ISOLATION F#BI-B

CLOSE

QHVC, A-HS-252B CLOSE(P)

NOTE (2)

ENERGIZE
SOL VLV
A-HY-252B

PNEU

OPEN
VALVE
A-HV-252B

DE-ENERGIZE
SOL VLV
A-HY-252B

PNEU

CLOSE
VALVE
A-HV-252B

QHVC

QHVC

ES

AUTO
CLOSE OPEN



A-HS-252B (TYP.)

SPRING RETURN TO
AUTO

TABLE 1

TRAIN	VALVE	SOL VLV	HAND SW	SAFETY SIG
UNIT 1 B	A-HV-252B	A-HY-252B	A-HS-252B	F#BI-B
A	29	29	29	A
B	34	34	34	B
A	35	35	35	A

NOTE:

1. VALVE A-HV-252B SHOWN, OTHER VALVES SIMILAR AS LISTED IN TABLE 1.

2. TO OPEN VALVE CONTROL SWITCH SHALL BE HELD ON OPEN POSITION UNTIL DAMPER IS FULLY OPEN TO ALLOW THE CIRCUIT TO SEAL-IN THROUGH VALVE POSITION SWITCH.

REF. DWGS.

P&ID AX4DB204-1

E.O.

AX3D-BG-E02H, E02G

NUCLEAR SAFETY RELATED

"Q"

REVIS	NO.	REVISIONS	DATE	DR	CHK	SUPV.	ESL	EGS	CHF. E.	P. E.	Q. A. E.	ENG. MGR.
1	1	REVISED TO MOVE DAMPERS TO AX5DN029-3	6-11-84	ALV	W/ku		PCZ	W/ku				
2	2	REVISED REF. DWGS.	12-8-84	AV	FAL		PCZ	W/ku				
3	3	ADDED COMPUTER INPUT, INCORP DCN1	12-5-84	JAG	ALV			W/ku				
4	4	ISSUED FOR CONSTRUCTION	4-27-79	HL	FAL	MKK		W/ku				

P&ID 204-1 REV 6
-2 REV. 5

SCANNED BY: [illegible]

SIZE B 11x17

RES

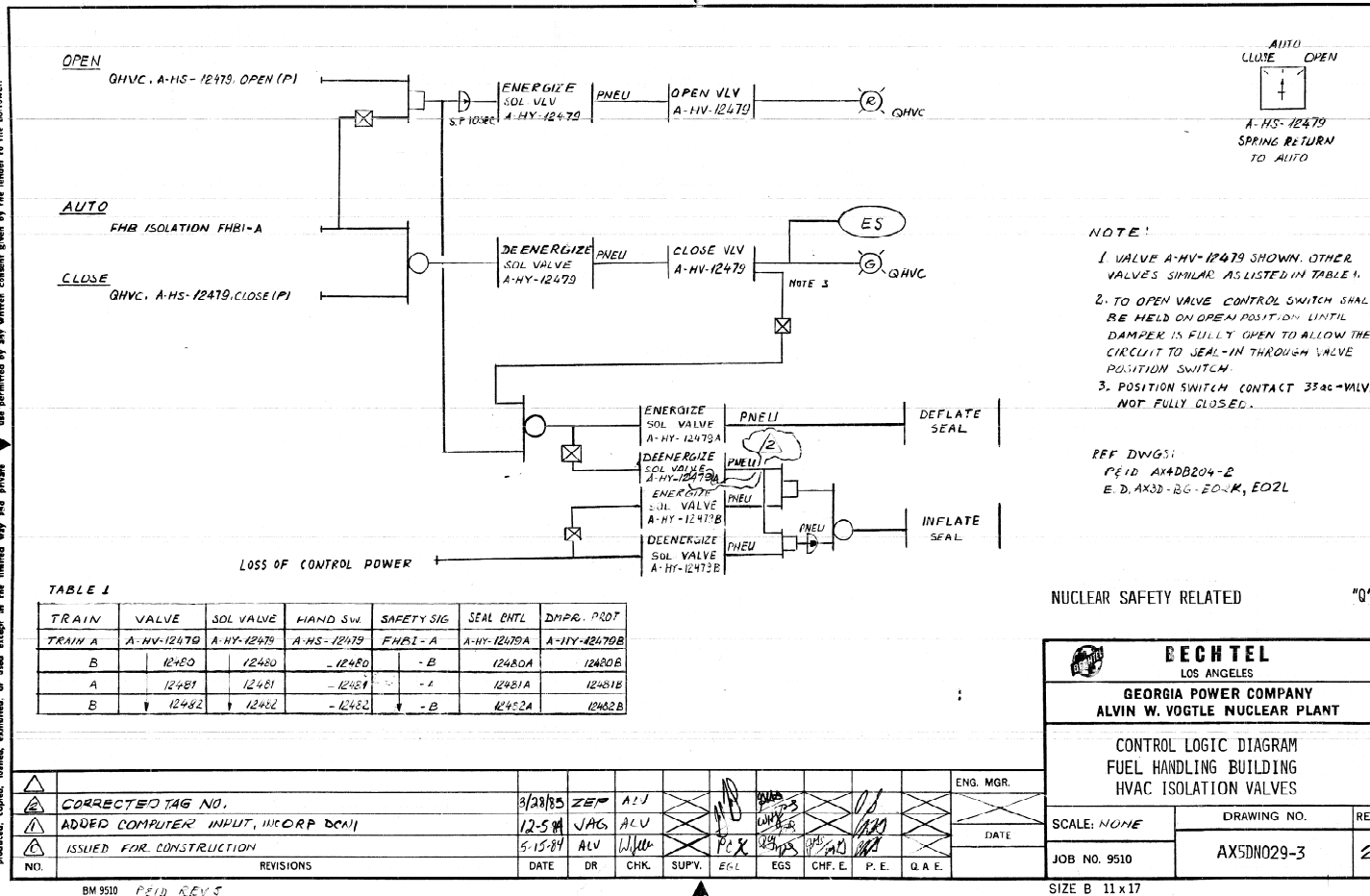
I CERTIFY THAT THE IMAGE CONTAINED ON THIS FRAME WAS MADE IN THE NORMAL AND REGULAR COURSE OF BUSINESS, ON THE DATE STATED BELOW AND THAT IT IS AN ACCURATE REPRODUCTION OF THE DOCUMENT SUBMITTED TO MICROGRAPHICS.

DATE: 3-28-85 BY: J. Collins

DATE: 3-28-85 BY: J. Collins

DATE: 3-28-85 BY: J. Collins

This drawing and the design it covers are the property of BECHTEL. They are loaned and on the borrower's express agreement that they will not be re-produced, copied, loaned, exhibited or used except in the limited way and private use permitted by any written consent given by the lender to the borrower.

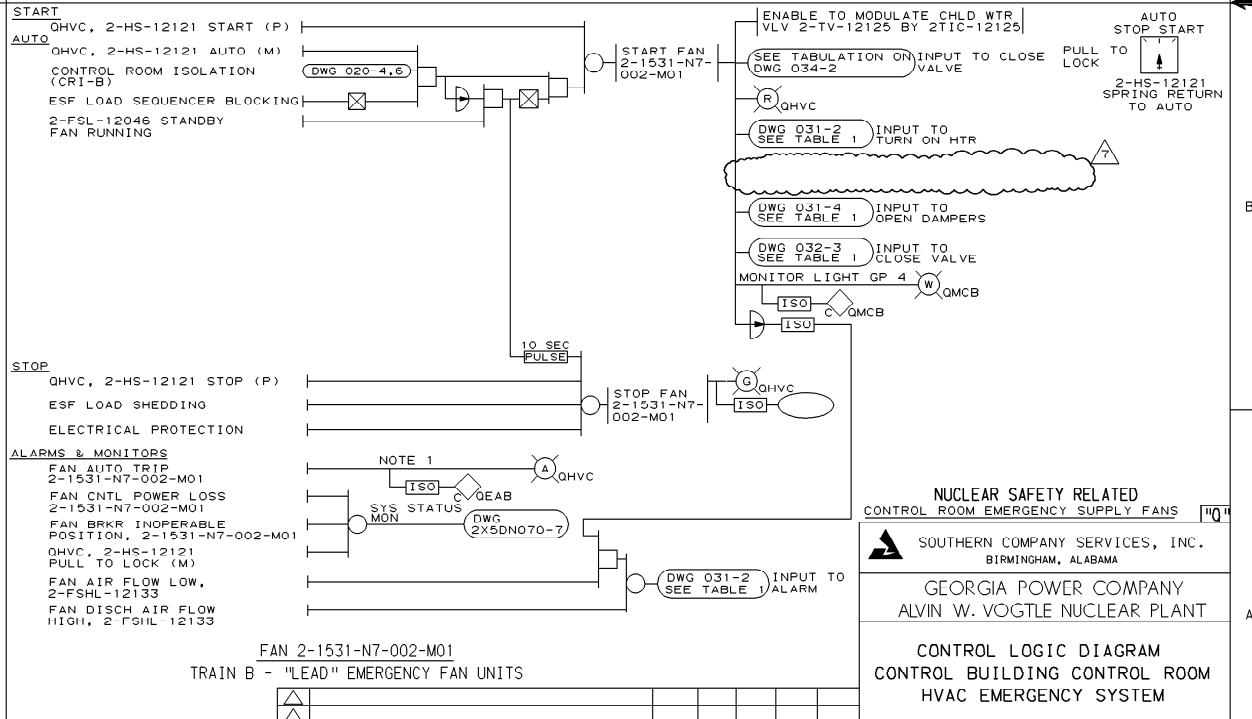
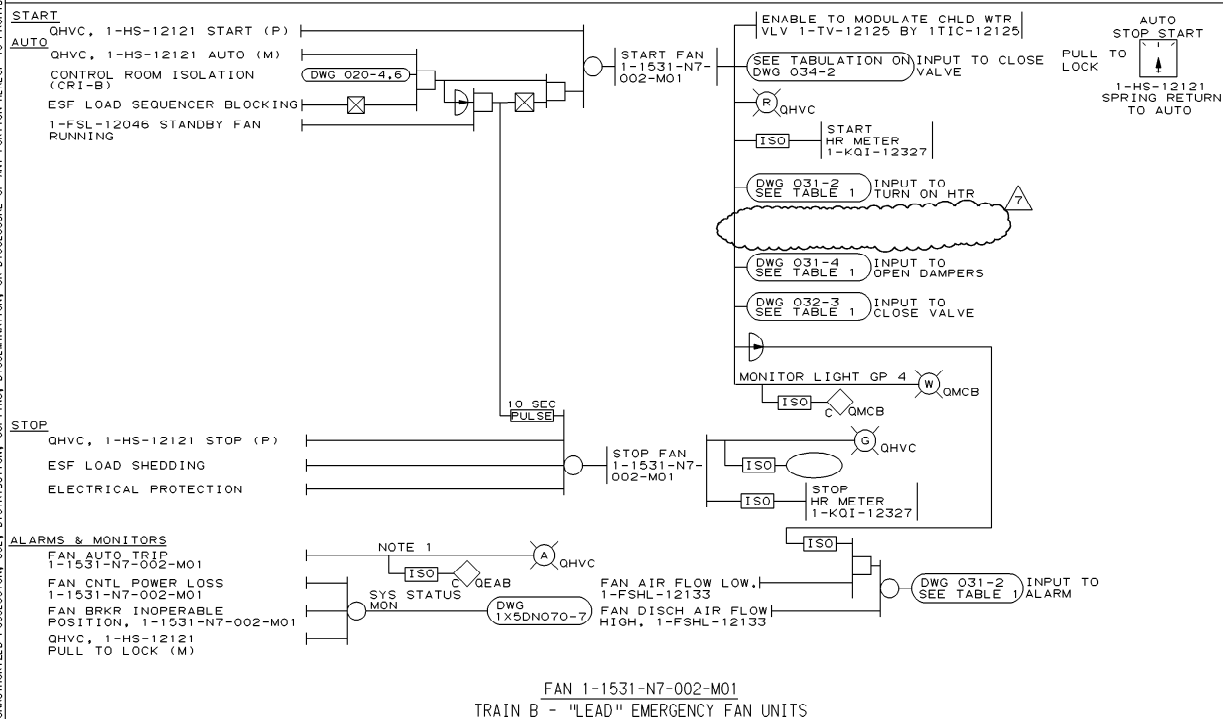
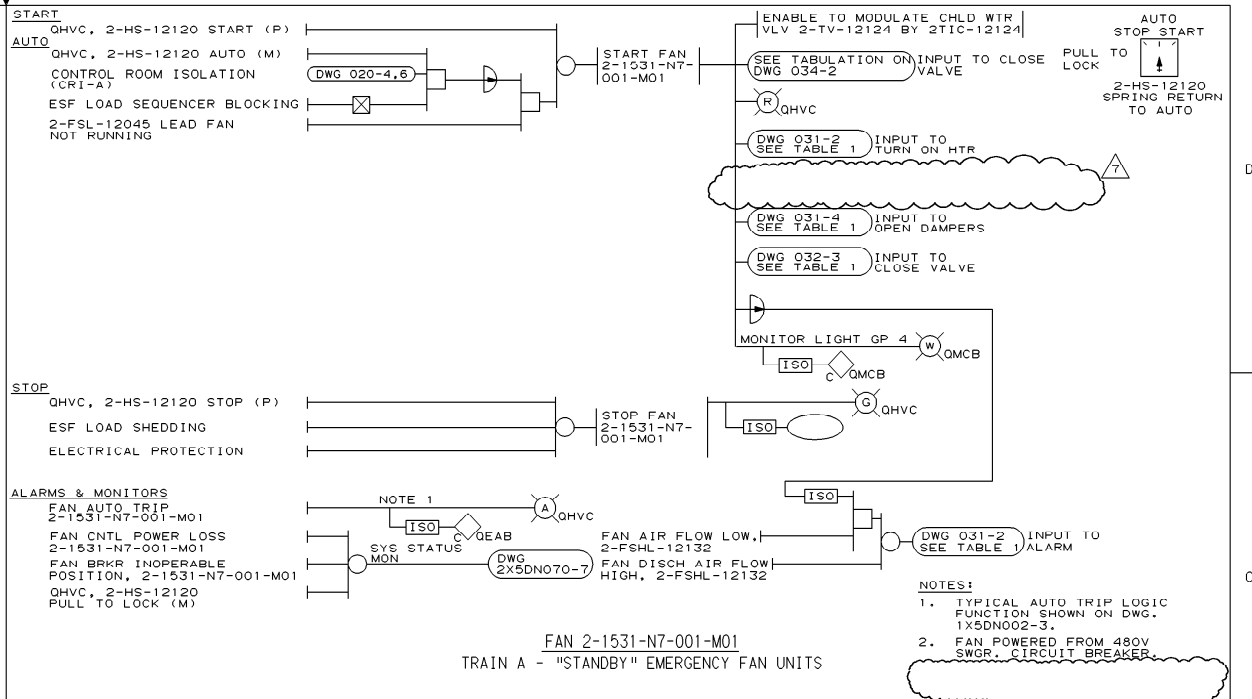
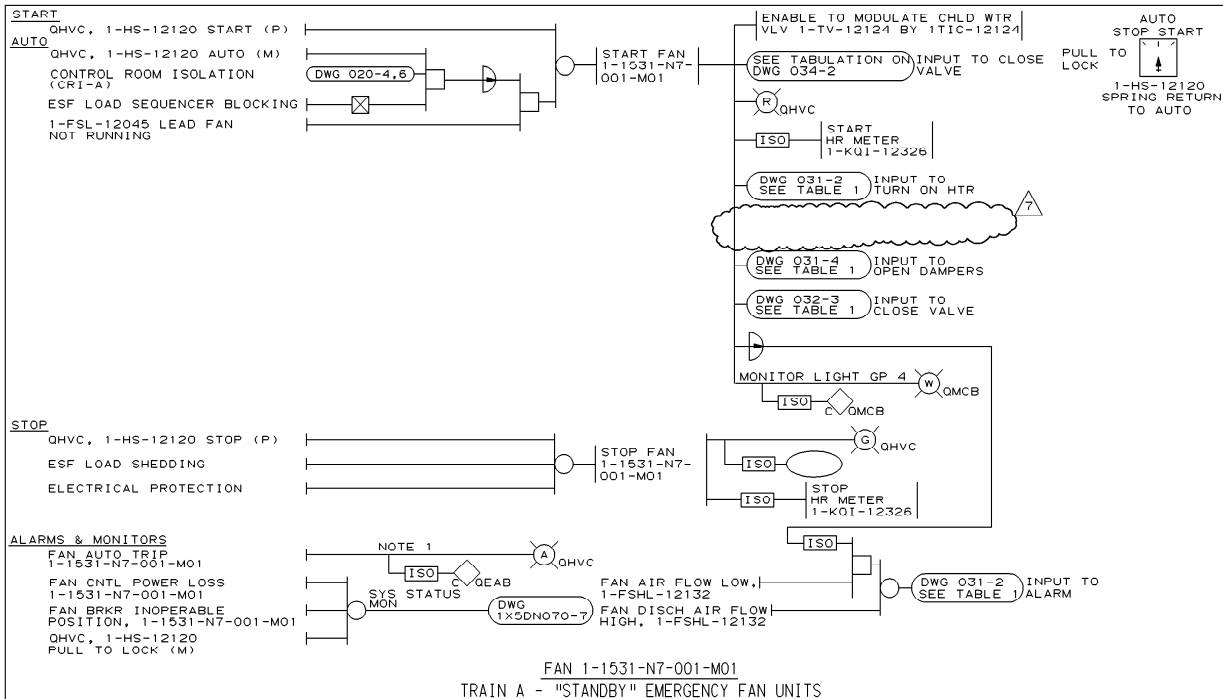


I CERTIFY THAT THE IMAGE CONTAINED ON THIS FRAME WAS MADE IN THE NORMAL AND REGULAR COURSE OF BUSINESS, ON THE DATE STATED BELOW AND THAT IT IS AN ACCURATE REPRODUCTION OF THE DOCUMENT SUBMITTED TO MICROGRAPHICS.

DATE: 3-28-85 BY: J. Collins

DATE: 3-28-85 BY: J. Collins

THIS DOCUMENT CONTAINS PROPRIETARY, CONFIDENTIAL, AND/OR TRADE SECRET INFORMATION OF THE SOUTHERN COMPANY OR OF THIRD PARTIES. IT IS INTENDED FOR USE ONLY BY EMPLOYEES OF, OR AUTHORIZED CONTRACTORS OF, THE SOUTHERN COMPANY. UNAUTHORIZED REPRODUCTION, COPIING, DISTRIBUTION, OR DISCLOSURE OF ANY PORTION HEREOF IS PROHIBITED.



NO.	REVISIONS	DATE	DR	CHK	APPV	DTL
1	INCORP. PER DCP 89-VIN0297.	10-14-96	00	GLB	WFP	
2	ISSUED FOR CONSTRUCTION					

NUCLEAR SAFETY RELATED
CONTROL ROOM EMERGENCY SUPPLY FANS

SOUTHERN COMPANY SERVICES, INC.
BIRMINGHAM, ALABAMA

GEORGIA POWER COMPANY
ALVIN W. VOGTLE NUCLEAR PLANT

CONTROL LOGIC DIAGRAM
CONTROL BUILDING CONTROL ROOM
HVAC EMERGENCY SYSTEM

SCALE: NONE	DRAWING NO. AX5DN031-1	REV. 7
JOB NO. 10604		

This drawing and the design it covers are the property of BECHTEL. They are merely loaned and on the borrower's express agreement that they will not be re-produced, copied, loaned, exhibited, or used except in the limited way and private use permitted by any written consent given by the lender to the borrower.

ALARMS

FAN AIR FLOW HIGH-LOW

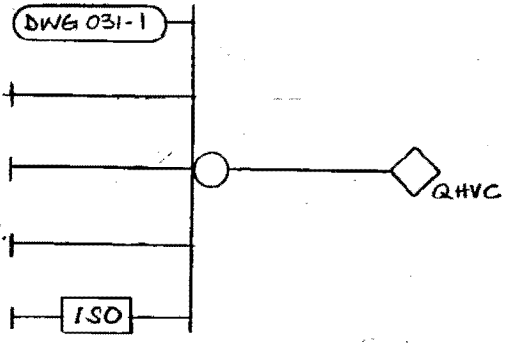
DWG 031-1

CHARCOAL FILTER TEMP HIGH 1-TSH-12134

CHARCOAL FILTER INLET MOISTURE HIGH 1-MISH-12169

FAN FILTER UNIT DIFF. PRESS. HIGH (1-PDSH-12136)

HEPA FILTER DIFF. PRESS. HIGH (1-PDIS-12136)



CHARCOAL FILTER TEMP HIGH HIGH, 1-TSH-12134



CLOSE OPEN



1-HS-12193 MAINTAINED

TABLE 1

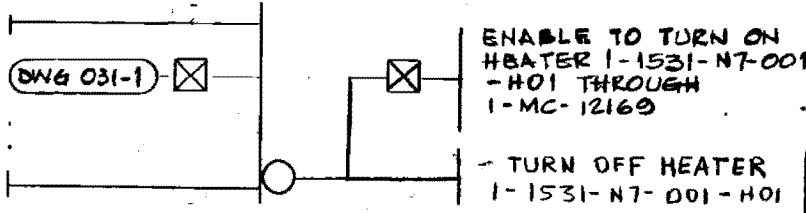
FILTER UNIT	TEMP. SW.	DIFF. PRESS. SW.	MOISTURE SW.
1-1531-N7-001-000	1-TSH-12134	1-PDIS-12136	1-PDSH-12136
1-1531-N7-002-000	1-TSH-12135	1-PDIS-12137	1-PDSH-12137
2-1531-N7-001-000	2-TSH-12134	2-PDIS-12136	2-PDSH-12136
2-1531-N7-002-000	2-TSH-12135	2-PDIS-12137	2-PDSH-12137

HEATER CONTROL

ON

BUILT-IN THERMAL CUT OUT

FAN RUNNING 1-1531-N7-001-M01



ELECTRICAL PROTECTION

OFF

HEATER FEEDER BRKR OFF 1-1531-N7-001-H01

FIRE PROTECTION

OPEN

CHARCOAL FILTER TEMP HIGH HIGH 1-TSH-12134

CLOSE

OPEN

QHVC, 1-HS-12193, OPEN (M)

CLOSE

QHVC, 1-HS-12193, CLOSE (M)

TABLE 2

HEATER	FAN RUNNING	TEMP CNTL	MOISTURE CNTL
1-1531-N7-001-H01	1-1531-N7-001-M01	1-TIC-12124	1-MC-12169
002	002	5	70
2-1531-N7-001-H01	2-1531-N7-001-M01	2-TIC-12124	2-MC-12169
002	002	5	70

ENABLE TO TURN ON HEATER 1-1531-N7-001-H01 THROUGH 1-MC-12169

- TURN OFF HEATER 1-1531-N7-001-H01

ENERGIZE SOL. OPEN VALVE 1-TV-12134

DE-ENERGIZE SOL. CLOSE VALVE 1-TV-12134

ENERG. SOL VLV 1-HY-12193

DE-ENERG SOL VLV 1-HY-12193

PNEU OPEN VALVE 1-HV-12193

PNEU CLOSE VALVE 1-HV-12193

TABLE 4

SOL. VLV	TEMP SW
1-TV-12134	1-TSH-12134
5	5

NOTE:

1. TYPICAL ALARMS & FIRE PROTECTION SHOWN, OTHERS SIMILAR AS LISTED IN TABLE 1, 3 & 4

2. TYPICAL HEATER CONTROL SHOWN, OTHER HEATERS LISTED IN TABLE 2 SIMILAR.

3. HEATER WILL TURN ON PROVIDED BUILT-IN PERMISSIVES ARE SATISFIED AS SHOWN.

4. SOLENOID VALVES LISTED IN TABLE 4 ARE PART OF A VENDOR PACKAGE WITH TEMP. SWITCH.

REF. DWGS.

P&ID AX40B206-1 & 206-3

E.D. 12X30-BG-C05R, T.Z

12X30-BH-F02A

NUCLEAR SAFETY RELATED

DUCT HEATER AND ALARMS "Q"

TABLE 3

VALVE	SOL VLV	HAND SW.
1-HV-12193	1-HY-12193	1-HS-12193
4	12194	12194
2-HV-12193	2-HY-12193	2-HS-12193
4	12194	12194

TABLE 4

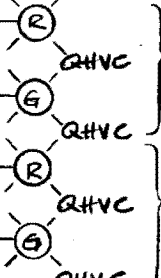


TABLE 3



BECHTEL

LOS ANGELES

GEORGIA POWER COMPANY
ALVIN W. VOGTLE NUCLEAR PLANT

CONTROL LOGIC DIAGRAM

CONTROL BUILDING CONTROL ROOM
HVAC EMERGENCY SYSTEM

SCALE: NONE

DRAWING NO.

REV.

JOB NO. 9510

AX5DN031-2

7

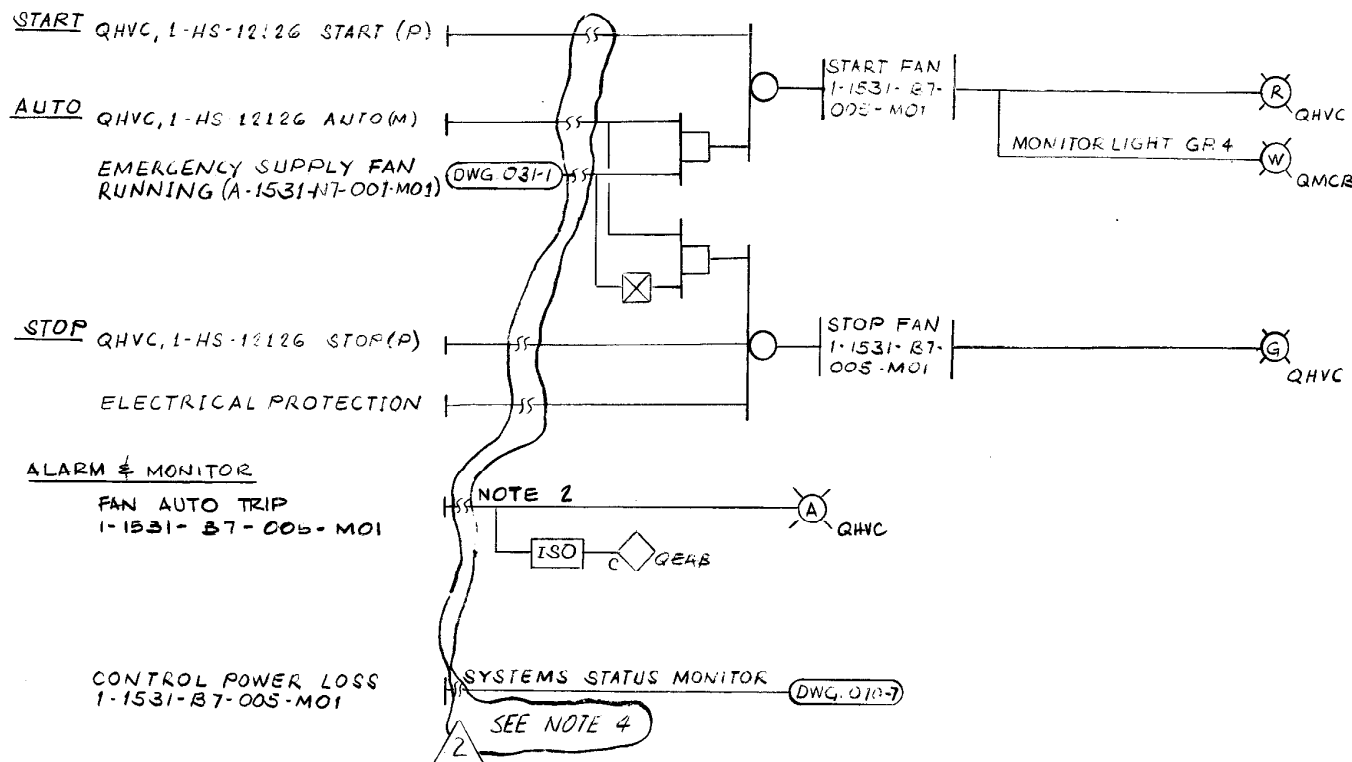
SCANNED DATE: 11-19-91


BM 9510 P&ID 206-1 REV
-3 REV.



11-19-91

This drawing and the design it covers are the property of BECHTEL. They are reproduced, copied, loaned, exhibited, or used except in the limited way and private use permitted by any written consent given by the lender to the borrower.



AUTO
STOP START

1-HS-12126 (TYP.)
SPRING RETURN
TO AUTO

NOTE:

1. EMERGENCY RETURN FAN
1-1531-87-005-MOI SHOWN
OTHER FANS LISTED IN
TABLE 1 SIMILAR.
2. TYPICAL AUTO TEST LOGIC
FUNCTION SHOWN ON DWS
1X5DN002-3
3. 480V MOTOR STARTER
4. FOR UNIT 2, CONTROL ROOM
EMERGENCY RETURN FANS AND
CONTROL SWITCHES 2HS-12126
& 2HS-12127 ARE DISABLED AND
THE ALARM IS DISCONNECTED.

REF DWGS: E.D. 1X3D-BG-C02Y,Z
2X3D-BG-C02Y,Z
P&ID AX40B206-1 & 206-3


NUCLEAR SAFETY RELATED "Q"
CONTROL ROOM EMERGENCY RETURN FAN

TABLE 1

TRAIN	RETURN FAN	CNTL SW.	SUPPLY FAN
A	1-1531-B7-005-MOI	1-HS-12126	1-1531-N7-001-MOI
B	1-1531-B7-006-MOI	1-HS-12127	1-1531-N7-002-MOI
A	2-1531-B7-005-MOI	2-HS-12126	2-1531-N7-001-MOI
B	2-1531-B7-006-MOI	2-HS-12127	2-1531-N7-002-MOI

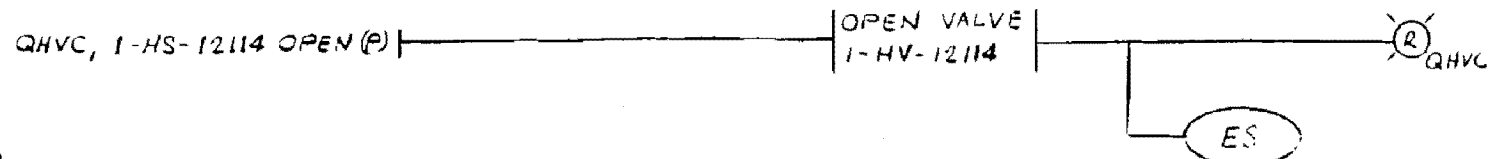
△												ENG. MGR.
△	INC. DCN #1 (IDCN #3 B20016M)	2-1-89	RSK	RSK			TDU	RSK				
△	REVISED AS INDICATED	3/13/80	HL	FAL			gpc	mm				
△	ISSUED FOR CONSTRUCTION	1-30-79	HL	FAL		mkk		mm	AP	WRT		DATE
NO.	REVISIONS	DATE	DR	CHK	SUPV.	EGL	EGS	CHF. E	P. E	Q. A. E		

BM 9510

 <div style="text-align: center;"> BECHTEL LOS ANGELES </div>		
GEORGIA POWER COMPANY ALVIN W. VOGTLE NUCLEAR PLANT		
CONTROL LOGIC DIAGRAM CONTROL BUILDING CONTROL ROOM HVAC EMERGENCY SYSTEM		
SCALE: <i>NONE</i>	DRAWING NO.	REV
JOB NO. 9510	AX5DN031-3	2

SIZE B 11 x 17

OPEN



STOP TORQUE PROTECTION

ELECTRICAL OVERLOAD
(DURING TESTING ONLY)

NOTE 3

STOP VALVE
1-HV-12114

CLOSE QHVC, 1-HS-12114 CLOSE (P)

CLOSE VALVE
1-HV-12114

QHVC

ES

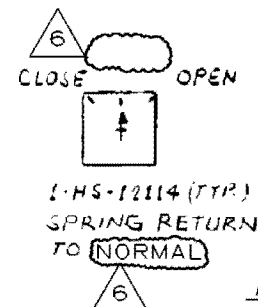


TABLE 2

SMOKE	
1-	ASH-12166
1-	ASH-12167
2-	ASH-12166
2-	ASH-12167

NOTES:

1. VALVE 1-HV-12114 SHOWN, OTHER VALVES SIMILAR AS TABULATED IN TABLE 1.
2. VALVES LISTED IN TABLE 1 ARE BUTTERFLY VALVES
OPEN - LIMIT STOPPED
CLOSE - LIMIT STOPPED
- 3 REFER TO SPECIAL NOTE 2 ON DWG. 1X5DN002-2
4. SMOKE ALARM 1-ASH-12166 IS SHOWN, OTHER SMOKE ALARMS SIMILAR AS LISTED IN TABLE 2.

TABLE 1

TRAIN	VALVE	CNTL. SW	SFTY. SIG. TOXIC GAS
A	1-HV-12114	1-HS-12114	DWG 020-10
B	1-HV-12115	1-HS-12115	
A	2-HV-12114	2-HS-12114	
B	2-HV-12115	2-HS-12115	

NOTES: (CONT'D)

REF. DWGS

PE 10 AX40B206-1 & 206-3

E.D. 1X3D-BG-COIG, IN
2X3D-BG-COIG, IN

ALARMS & MONITOR

VALVE MOTOR OVERLOAD
1-HV-12114

CONTROL POWER LOSS
1-HV-12114

OSA SMOKE DETECTED
1-ASH-12166

CONTROL POWER LOSS
1-HV-12114

SYSTEM STATUS MONITOR

DWG 070-7

NUCLEAR SAFETY RELATED "Q"
OR OUTSIDE AIR ISOLATION VALVE

SOUTHERN COMPANY SERVICES, INC.
BIRMINGHAM, ALABAMA

GEORGIA POWER COMPANY
ALVIN W. VOGTLE NUCLEAR PLANT

CONTROL LOGIC DIAGRAM
CONTROL BUILDING
CONTROL ROOM ISOLATION

SCALE: NONE

DRAWING NO.

REV

JOB NO. 10604

AX5DN032-1

6

THIS DRAWING AND THE DESIGN IT COVERS ARE THE PROPERTY OF SCS. THEY ARE LOANED TO YOU BY THE BORROWER'S EXPRESS AGREEMENT THAT THEY WILL NOT BE REPRODUCED, COPIED, LOANED, EXHIBITED, OR USED EXCEPT IN THE LIMITED WAY AND PRIVATE USE PERMITTED BY ANY WRITTEN CONSENT GIVEN BY THE LENDER TO THE BORROWER.

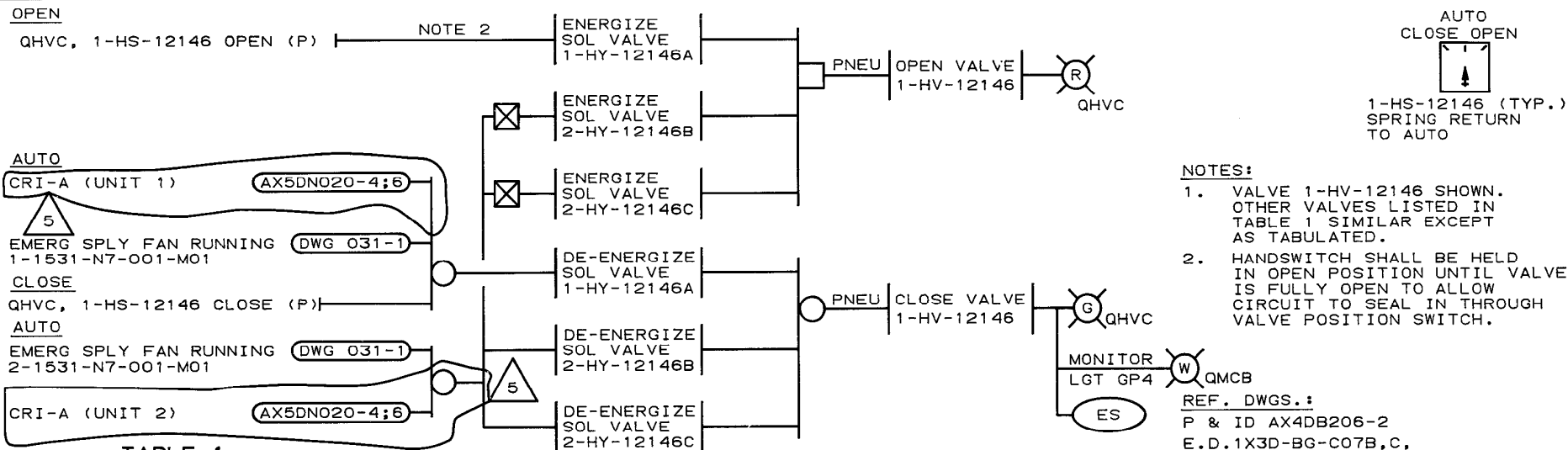


TABLE 1

SOL. VLV.	TRAIN	SERVICE	VALVE	SOL. VLV.	CNTL. SW.	FAN NO.	SOL. VLV.	FAN NO.
2-HY-12146C	A	NORMAL SUPPLY	1-HV-12146	1-HY-12146A	1-HS-12146	1-1531-N7-001-M01	2-HY-12146B	2-1531-N7-001-M01
2-HY-12147C	B	FAN OUTLET ISO	1-HV-12147	1-HY-12147A	1-HS-12147	1-1531-N7-002-M01	2-HY-12147B	2-1531-N7-002-M01
1-HY-12146C	A	NORMAL SUPPLY	2-HV-12146	2-HY-12146A	2-HS-12146	2-1531-N7-001-M01	1-HY-12146B	1-1531-N7-001-M01
1-HY-12147C	B	FAN OUTLET ISO	2-HV-12147	2-HY-12147A	2-HS-12147	2-1531-N7-002-M01	1-HY-12147B	1-1531-N7-002-M01
2-HY-12148C	B	NORMAL EXHAUST	1-HV-12148	1-HY-12148A	1-HS-12148	1-1531-N7-002-M01	2-HY-12148B	2-1531-N7-002-M01
2-HY-12149C	A	FAN INLET ISO	1-HV-12149	1-HY-12149A	1-HS-12149	1-1531-N7-001-M01	2-HY-12149B	2-1531-N7-001-M01
1-HY-12148C	B	NORMAL EXHAUST	2-HV-12148	2-HY-12148A	2-HS-12148	2-1531-N7-002-M01	1-HY-12148B	1-1531-N7-002-M01
1-HY-12149C	A	FAN INLET ISO	2-HV-12149	2-HY-12149A	2-HS-12149	2-1531-N7-001-M01	1-HY-12149B	1-1531-N7-001-M01

NUCLEAR SAFETY RELATED

CONTROL ROOM NORMAL FAN ISOLATION VALVES

SOUTHERN COMPANY SERVICES, INC.
BIRMINGHAM, ALABAMA

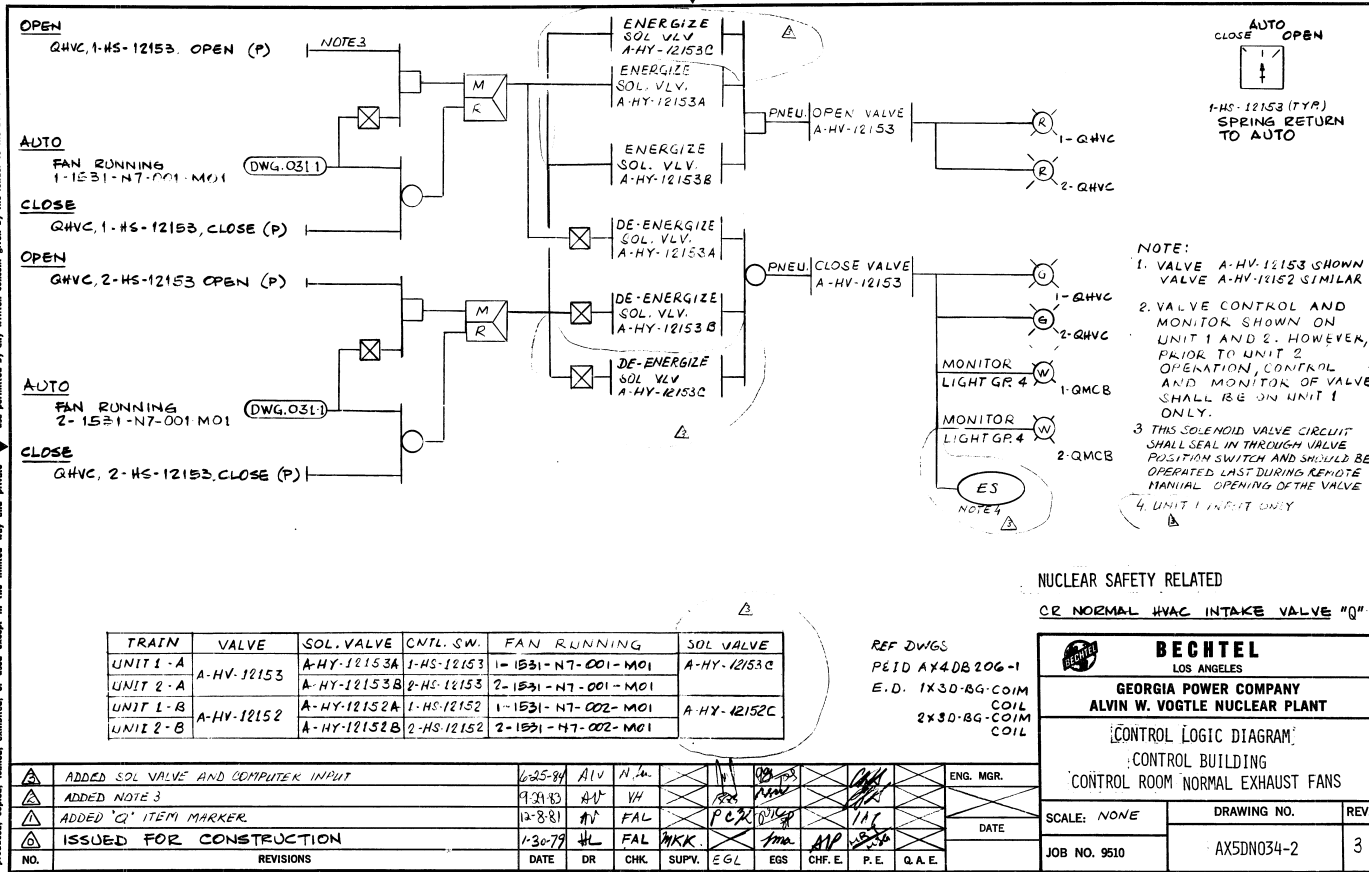
GEORGIA POWER COMPANY
ALVIN W. VOGTLE NUCLEAR PLANT

CONTROL LOGIC DIAGRAM
CONTROL BUILDING
CONTROL ROOM ISOLATION

INCORP. ABN 03536 (VOIDS DCN #1) & 88-V1N079A007.	2-15-91	GIB	LTM	JAC	LPP	DM	DM	DM	PDM	ENG MGR
REVISIONS	DATE	DR	CHK	RE	DM	DM	DM	PDM		
ADDED COMPUTER INPUT. DELETED REF. DWGS.	6/25/84	SEE	MICROFILM	FOR	SIGNATURES					
ISSUED FOR CONSTRUCTION	1/4/79	SEE	MICROFILM	FOR	SIGNATURES					
REVISIONS	DATE	DR	CHK	SUPV	EGL	EGS	CHF	E	PE	QAE

SIZE B 11x17

This drawing and the design it covers are the property of BECHTEL. They are loaned to you and are to be used only for the project and site for which they were prepared. They are not to be reproduced, copied, loaned, exhibited, or used except in the limited way and for the limited purpose for which they were prepared. They are to be returned to the lender when the project and site for which they were prepared are completed.



BM 9510 PEID 206-1 REV.3

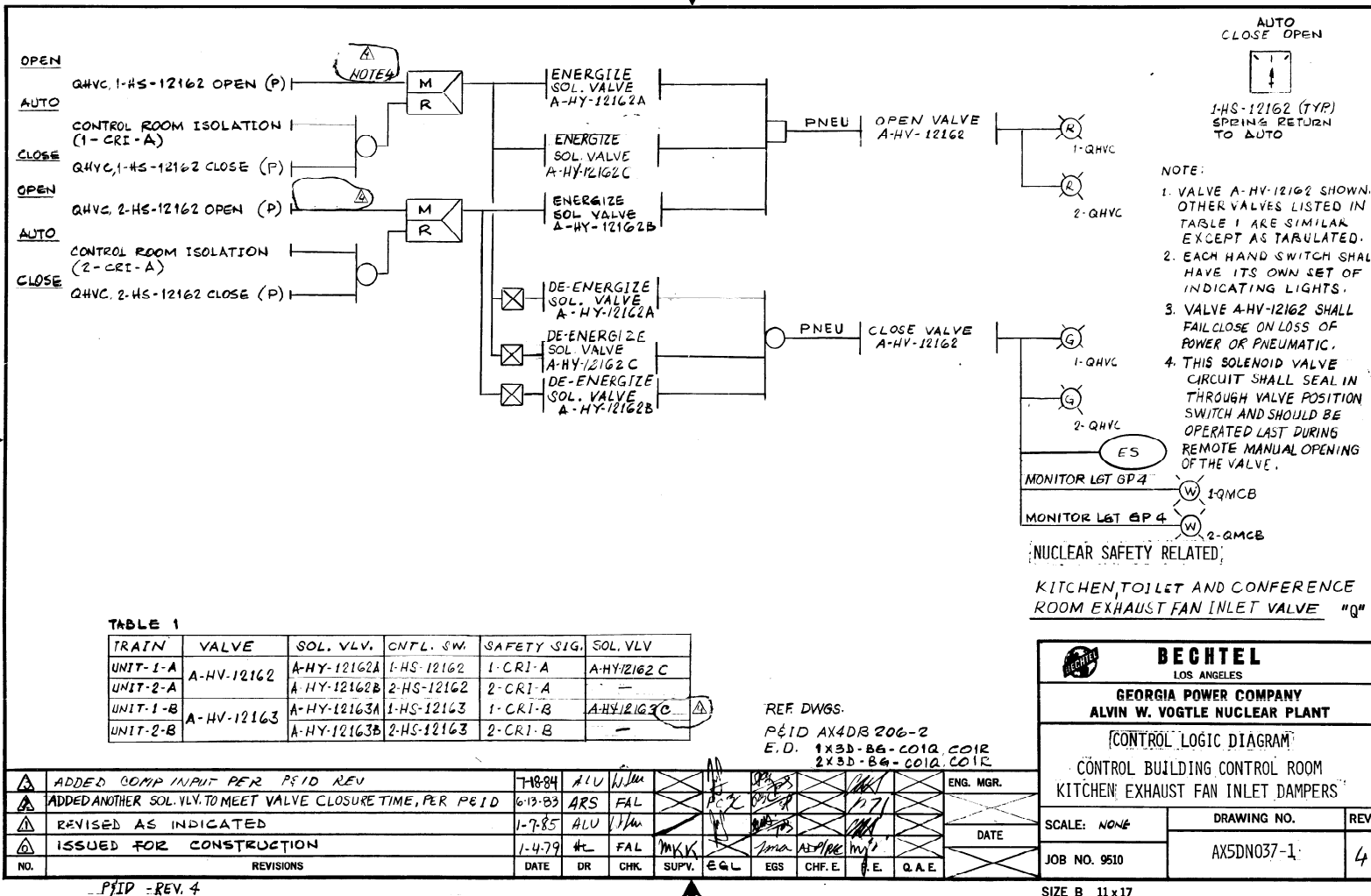
SIZE B 11x17

I CERTIFY THAT THE IMAGE CONTAINED ON THIS FRAME WAS MADE IN THE NORMAL AND REGULAR COURSE OF BUSINESS, ON THE DATE STATED BELOW AND THAT IT IS AN ACCURATE REPRODUCTION OF THE DOCUMENT SUBMITTED TO MICROGRAPHICS.

DATE: 6-25-84
CAMERA OPERATOR: [Signature]
SECTION SUPERVISOR: [Signature]

I CERTIFY THAT THE IMAGE CONTAINED ON THIS FRAME WAS MADE IN THE NORMAL AND REGULAR COURSE OF BUSINESS ON THE DATE STATED BELOW AND THAT IT IS AN ACCURATE REPRODUCTION OF THE DOCUMENT SUBMITTED TO MICROGRAPHICS
 1-7-85 De Collins SECTION SUPERVISOR
 DATE: CAMERA OPERATOR

This drawing and the design it covers are the property of BECHTEL. They are loaned and on the borrower's express agreement that they will not be reproduced, copied, loaned, exhibited, or used except in the limited way and for the purpose intended.



I CERTIFY THAT THE IMAGE CONTAINED ON THIS FRAME WAS MADE IN THE NORMAL AND REGULAR COURSE OF BUSINESS ON THE DATE STATED BELOW AND THAT IT IS AN ACCURATE REPRODUCTION OF THE DOCUMENT SUBMITTED TO MICROGRAPHICS
 1-7-85 De Collins SECTION SUPERVISOR
 DATE: CAMERA OPERATOR

This drawing and the design it covers are the property of BECHTEL. They are loaned, copied, loaned, exhibited, or used except in the limited way and private use permitted by any written consent given by the lender to the borrower.

START

QHVC, 1-HS-12823A START (P)

PSDA, 1-HS-12823C CNTL RM (M)

PSDA, 1-HS-12823B START (P)

PSDA, 1-HS-12823C LOCAL (M)

AUTO QHVC, 1-HS-12823A AUTO (M)

SAFETY INJECTION (SI-A)

STOP

QHVC, 1-HS-12823A STOP (P)

PSDA, 1-HS-12823C CNTL RM (M)

PSDA, 1-HS-12823B STOP (P)

PSDA, 1-HS-12823C LOCAL (M)

ELECTRICAL PROTECTION

ALARMS

PSDA 1-HS-12823C LOCAL (M)

FAN AUTO TRIP

1-1539-A7-001-MOI

NOTE 2

QHVC

ISO

QEARB

AUX. RELAY ROOM

TEMP HIGH 1-TSH-12819

QHVC

TABLE 1

TRAIN	FAN NO.	HAND SW.	SFTY SIG	TEMP. SW
A	1-1539-A7-001-MOI	1-HS-12823A, B & C	SI-A	1-TSH-12819
A	2- -001	2 12823	-A	2 12819
B	1- -002	1 12918	-B	1 12916
B	2- -002	2 12918	-B	2 12916

STOP START

CNTL RM LOCAL

STOP START



1-HS-12823B
SPRING RETURN
TO NEUTRAL



1-HS-12823C
MAINTAINED
(TRANSF SW)



1-HS-12823A
SPRING RETURN
TO AUTO

NOTE:

1. FAN 1-1539-A7-001-MOI SHOWN. OTHER FANS LISTED IN TABLE 1 SIMILAR AS TABULATED.
2. TYPICAL AUTO TRIP LOGIC FUNCTION SHOWN ON DWG. 1X5DN002-3
3. 480V MOTOR STARTER

REF. DWGS.

PEID AX4DB216 , 225

E.D. 1X3D-BG-C07M,N
2X3D-BG-C07M,N

NUCLEAR SAFETY RELATED

"Q"

AUXILIARY RELAY ROOM FAN



BECHTEL

LOS ANGELES

GEORGIA POWER COMPANY
ALVIN W. VOGTLE NUCLEAR PLANT

CONTROL LOGIC DIAGRAM
CONTROL BUILDING
CABLE SPREADING ROOM HVAC

SCALE: NONE

DRAWING NO.

REV.

JOB NO. 9510

AX5DN056-2

3

SIZE B 11x17

BM 9510

NO.	REVISIONS	DATE	DR	CHK	SUPV.	EGL	EGS	CHF. E	P. E	Q. A. E.	ENG. MGR.
1	CORRECTED SWITCH LOCATION	6/25/84	HL	HL	HL	HL	HL	HL	HL	HL	HL
2	REVISED AS INDICATED (COLD SHUTDOWN REQMT)	3/12/81	FAL	AA	AA	AA	AA	AA	AA	AA	AA
3	REVISED AS INDICATED	3/13/80	HL	FAL	HL	HL	HL	HL	HL	HL	HL
4	ISSUED FOR CONSTRUCTION	3/7/79	NED	FAL	MKK	MKK	MKK	MKK	MKK	MKK	MKK

