



Thomas D. Ray
Vice President
Oconee Nuclear Station

Duke Energy
ON01VP | 7800 Rochester Hwy
Seneca, SC 29672

ONS-2017-006

o: 864.873.5016
f: 864.873.4208
Tom.Ray@duke-energy.com

January 12, 2017

10 CFR 50.54(q)

Attn: Document Control Desk
U.S. Nuclear Regulatory Commission
11555 Rockville Pike
Rockville, Maryland 20852-2746

Subject: Duke Energy Carolinas, LLC
Oconee Nuclear Station, Units 1, 2, and 3
Docket Nos. 50-269, -270, and -287
Emergency Plan Revision 2016-003

Please find attached for your use and review copies of the revisions to the Oconee Nuclear Station Emergency Plan along with the associated revision instructions and 10 CFR 50.54(q) evaluation.

This revision is being submitted in accordance with 10 CFR 50.54(q) and does not reduce the effectiveness of the Emergency Plan. If there are any questions or concerns pertaining to this revision please call Pat Street, Emergency Preparedness Manager, at 864-873-3124.

By copy of this letter, two copies of this revision are being provided to the NRC, Region II, Atlanta, Georgia.

Sincerely,

Thomas D. Ray
Vice President
Oconee Nuclear Station

Attachments:
Revision Instructions
Emergency Plan Revision 2016-003
10 CFR 50.54(q) Evaluation(s)

AX45
NRR

ONS-2017-006

U. S. Nuclear Regulatory Commission
January 12, 2017

xc: w/2 copies of attachments

Ms. Catherine Haney
Administrator, Region II
Marquis One Tower
245 Peachtree Center., NE Suite 1200
Atlanta GA 30303-1257

w/copy of attachments

Mr. James R. Hall, Senior Project Manager
U. S. Nuclear Regulatory Commission
Office of Nuclear Reactor Regulation
11555 Rockville Pike
Mailstop: O-8G9A
Rockville, MD 20852 2738
(send via E-mail)

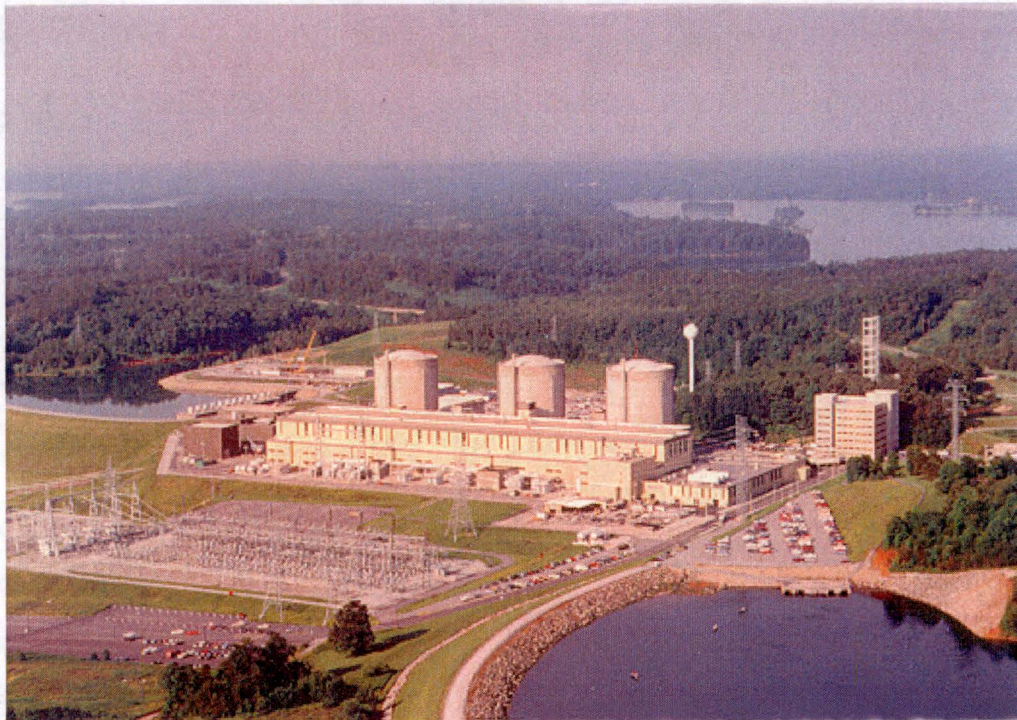
w/o attachments

Mr. Eddy Crowe
NRC Senior Resident Inspector
Oconee Nuclear Station

ELL - EC2ZF



OCONEE NUCLEAR STATION EMERGENCY PLAN



APPROVED:

Thomas D. Ray

Thomas D. Ray

1/11/2017

Date Approved

**REVISION 2016-003
December, 2016**

December 15, 2016

OCONEE NUCLEAR STATION

SUBJECT: Emergency Plan Revision 2016-003

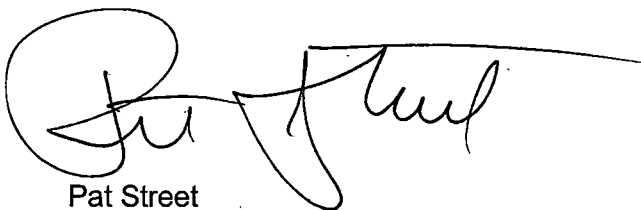
Please make the following changes to the Emergency Plan:

REMOVE

Cover Sheet Rev. 2016-002
Record of Changes Rev. 2016-002
LOEP Rev. 2016-002, Sept. 2016
Section B Rev. 2016-002, Sept. 2016
Section F Rev. 2015-007, Nov. 2015
Section P Rev. 2016-002, Sept. 2016
Appendix 09 - July 2010
Appendix 10 Rev. 2010-01, February. 2010

INSERT

Cover Sheet Rev 2016-003
Record of Changes 2016-003
LOEP 2016-003, Dec. 2016
Section B, Rev 2016-003, Dec. 2016
Section F, Rev 2016-003, Dec. 2016
Section P, Rev 2016-003, Dec. 2016
Appendix 09, Cover Sheet (Dec 2016)
Appendix 10, Cover Sheet (Dec 2016)

A handwritten signature in black ink, appearing to read 'Pat Street', with a large, stylized loop at the end.

Pat Street
ONS Emergency Preparedness Manager

Oconee Emergency Plan

List Of Effective Pages

<u>SECTION</u>	<u>PAGE NUMBER</u>	<u>REVISION NO.</u>	<u>DATE</u>
Emergency Plan Approval Cover Sheet		Rev. 2016-002	September 2016
List of Effective Pages	Page 1 - 3	Rev. 2016-003	December 2016
List Of Figures	Page 1 - 5	Rev. 2014-02	October 2014
Record Of Changes	Page 1 - 10	Rev. 2016-003	December 2016
Table of Contents	Page 1	Rev. 2012-05	December 2012
I. Introduction	Page 1 - 5 Page i-6 Page i-6a	Rev. 2012-05 Rev. 2008-02 Rev. 2012-05	December 2012 October 2008 December 2012
II. Planning Standards and Evaluation Criteria			
A. Assignment of Responsibility	Page A-1 - A-8	Rev. 2016-002	September 2016
B. Onsite Emergency Organization	Page B-1 - B-21	Rev. 2016-003	December 2016
C. Emergency Response Support And Resources	Page C-1 & C-2	Rev. 2012-05	December 2012
D. Emergency Classification System	Page D-1 - D-101	Rev. 2015-007	November 2015
E. Notification	Page E-1 & E-2	Rev. 2008-02	December 2008
F. Emergency Communications	Page F-1 - F-8	Rev. 2016-003	December 2016
G. Public Information and Education	Page G-1 - G-5	Rev. 2014-02	October 2014

**Oconee Emergency Plan
List Of Effective Pages**

<u>SECTION</u>	<u>PAGE NUMBER</u>	<u>REVISION NO.</u>	<u>DATE</u>
H. Emergency Facilities And Equipment	Page H-1 - H-39	Rev. 2016-002	September 2016
I. Accident Assessment	Page I-1 - I-37	Rev. 2015-002	March 2015
J. Protective Response	Page J-1 - J-12	Rev. 2015-007	November 2015
K. Radiological Exposure Control	Page K-1 - K-12	Rev. 2015-004	April 2015
L. Medical And Public Health Support	Page L-1 - L-5	Rev. 2015-007	November 2015
M. Recovery And Reentry Planning And Post- Accident Operations	Page M-1 - M-5	Rev. 2016-02	September 2016
N. Exercises and Drills	Page N-1 - N-3	Rev. 2015-007	November 2015
O. Emergency Response Training	Page O-1 - O-3	Rev. 2012-05	December 2012
P. Responsibility For The Planning Effort: Development, Periodic Review and Distribution Of The Emergency Plans	Page P-1 - P-18	Rev. 2016-003	December 2016
III. APPENDICIES			
APPENDIX 1			
Definitions	Page 1 - 5	Rev. 2012-05	December 2012
APPENDIX 2			
Meteorology And Offsite Dose Assessment Program	Page 1 -4	Rev. 2014-03	December 2014

**Oconee Emergency Plan
List Of Effective Pages**

<u>SECTION</u>	<u>PAGE NUMBER</u>	<u>REVISION NO.</u>	<u>DATE</u>
APPENDIX 3 Alert And Notification System Description	Page 1 - 4	Rev. 2015-004	May 2015
APPENDIX 4 Evacuation Time Estimates	Page 1	Rev. 2013-01	October 2013
APPENDIX 5 Letters of Agreement	Page 1	Rev. 2016-002	September 2016
	Page 2	Rev. 2016-002	September 2016
APPENDIX 6 Distribution List	Page 1 - 4	Rev. 2014-02	October 2014
APPENDIX 7 Emergency Data Transmittal System	Page 1	Rev. 2012-01	June 2012
APPENDIX 8 Spill Prevention Control And Countermeasure Plan ONS Pollution Prevention Plan -cover sheet	Page 1	Rev. 2016-001	June 2016
APPENDIX 9 ONS Chemical Treatment Ponds 1, 2 and 3, Groundwater Monitoring Sampling And Analysis Plan	Page 1	Rev. 2016-003	December 2010
APPENDIX 10 Hazardous Materials Response Plan	Page 1	Rev. 2016-003	December 2016

RECORD OF CHANGES

<u>REVISION NUMBER</u>	<u>EFFECTIVE DATE</u>	<u>REASON FOR REVISIONS</u>
Revision 1	April 1, 1981	Meteorological Update
Revision 2	December 31, 1981	Rewrite Emergency Plan in Nureg 0654 Format
Revision 3	March, 1982	Update Emergency Plan
Revision 4	April, 1982	Revisions & Changes to update Emergency Plan
Revision 5	September 1, 1982	Revision to coincide with Crisis Management Plan
Revision 6	November 1, 1982	Revision update
Revision 7	December 14, 1982	Review and update
83-1	June 10, 1983	Changes required by action items due to annual exercise and review and general update
83-2	November 17, 1983	Changes required by review and general update
84-1	March 26, 1984	Revisions as determined by QA audit and minor editing
84-2	November 15, 1984	Revisions as determined by annual review
85-1	June 7, 1985	Revisions/changes/editing
85-2	-----	Revisions/changes/editing-annual review
86-1	March 8, 1986	New Oconee Brochure
86-2	November 13, 1986	Revisions/changes/editing-annual review
86-3	December 9, 1986	Correct changes identified as deficiencies by the NRC in Rev. 85-2.
87-1	February 4, 1987	Revision update, minor editing changes, included failed fuel accident assessment information.
87-2	-----	Revision update, minor editing changes Review Section D. Agreement letters updated.
87-4	December 10, 1987	Incorporate alternate TSC and OSC into Emergency Plan
88-1	June 7, 1988	Revised EALS in Section D.
88-2	October 14, 1988	Annual review. Minor editorial revisions.
89-1	February 28, 1989	Major revision to Section D. Added Appendix 7. Minor editorial changes.
89-2	August 14, 1989	Change to Section D. Minor editorial revisions.
89-3	January 5, 1990	Annual Review

RECORD OF CHANGES (Continued)

<u>REVISION NUMBER</u>	<u>EFFECTIVE DATE</u>	<u>REASON FOR REVISIONS</u>
90-1	March 1, 1990	Changes to Section D as required by NRC commitment.
90-2	June 1, 1990	Changes reflect upgrade of radiation monitor system and minor editing.
90-3	July 2, 1990	Change to Section D, Emergency Classification.
90-4	October 31, 1990	Annual Review
91-1	January 21, 1991	Section D revision. (RIA upgrade)
91-2	February 20, 1991	Section D revision. (TS to SLC)
91-3	March 22, 1991	Section D revision. (RIA upgrade); Section D revision. (SLB revision)
91-5	September 19, 1991	Section D revision. (RIA upgrade)
91-6	December 16, 1991	Annual review.
92-1	March 1, 1992	Section D (RIA upgrade). Minor editorial changes.
92-2	June 30, 1992	Major Revision
92-3	October 29, 1992	Annual review
92-4	12/31/92	Section B, D, H, J, Appendix 4, 5 & 6 changes.
93-1	03/01/93	Sections D, G, H, N, P, and Appendix 6
93-2	05/07/93	Sections A, B, D, Appendix 5 and 6
93-3	07/23/93	Sections A, B, G, H, I, J, L, M, N, & Appendix 6
93-4	08/11/93	Sections B, D, and Appendix 5
93-05	01/01/94	Annual Review, Incorporation of EPA-400 guidelines.
94-01	03/15/94	Additions of Appendix 8 and 9. - (Minor revisions)
94-02	05/09/94	Changes to Appendix 5, Pages 1 and 2; Changes to Appendix 6, Pages 2 and 4; State of South Carolina Agreement Letter
94-03	05/25/94	Changes to Appendix 5, Page 2; Changes to Appendix 6, Pages 4 and 5; INPO Agreement Letter
94-04	06/06/94	Changes to Appendix 5, Page 2; Change Teledyne Isotopes Badge Service agreement letter to Northeast Utilities Service Company
94-05	08/08/94	Changes to Section D
94-06	12/29/94	Annual review. Editorial changes, minor revisions.

RECORD OF CHANGES (Continued)

<u>REVISION NUMBER</u>	<u>EFFECTIVE DATE</u>	<u>REASON FOR REVISIONS</u>
95-01	02/23/95	Changes to Sections B, G, Appendix 5.
95-02	10/23/95	Annual review and changes
95-03	11/01/95	Section D. Change, Incorporated new EAL'S.
95-04	12/31/95	Calendar 1996, HAZMAT Changes, RP/14 deleted
96-01	02/13/96	Changes to Sections B, D, and N.
96-02	06/25/96	Changes to Section D
96-03	07/96	Changes to Section D
96-04	12/96	Annual review, editorial changes, minor changes with major change to Appendix 10.
97-01	07-97	Section B, I, Appendix 5 & 7, with editorial/minor changes to Section H & P
97-02	12-97	Annual review and editorial/minor changes
98-01	02-98	Section D, page 35. Correction of title on Enclosure 4.3
98-02	03-98	Section N, page 1 & 2, Added part a (General) to Section N.2 to ensure drills conducted between NRC evaluated exercises are performed in accordance with 10CFR50, Appendix E, Section IV.F.2.b
98-03	04-98	List of Figures page number corrections, Added Emergency Operation Facility to Figure H-15, Figure H-20 reformatted. Added Agreement Letter with Keowee-Key Volunteer Fire Department, Appendix 5, #24. Appendix 10 - Hazardous Materials Response Plan, corrections on Table of Contents with minor revisions. Headings on Appendix 10, Figure 2 with minor revisions.
98-04	12-98	Annual review and editorial/minor changes.
99-01	03-99	<p>The ONS Technical Specifications have been converted to a set of Technical Specifications based on NUREG 1430. "Standard Technical Specifications Babcock and Wilcox Plants."</p> <p>Replaced the description phrases (titles) in Section D for Operating Modes with the Mode number from Improved Technical Specifications. In Section I the portion describing leak rate volume percent per day was changed to percent of the containment air weight per day. The reference to Tech Spec 4.4.1.1 was changed to reference Improved Technical Specification 5.5.2.</p>

NOTE: The implementation date of Improved Tech Specs was moved from March 4, 1999 to March 27, 1999, therefore the revision date for revision 99-01 will depict February when the actual administrative changes were completed.

RECORD OF CHANGES (Continued)

<u>REVISION NUMBER</u>	<u>EFFECTIVE DATE</u>	<u>REASON FOR REVISIONS</u>
99-02	12-99	Annual review and editorial/minor changes
2000-01	04-2000	Addition of List of Effective Pages
2000-02	05/2000	Editorial /minor changes
2000-03	12/2000	Annual review and editorial/minor changes
2001-01	02/07/2001	Additions and corrections as result of 50.54(t) audit. Additional information added to Basis Document and additional EAL's resulting from EP drill critiques.
2001-02	08/2001	Changes in areas of responsibility. Added note concerning RVLS to Fission Product Barrier Matrix; 2001 calendar; information added to EP Functional Area Manual; added/updated information on annual average meteorology; Appendix 5; Appendix 6; editorial/minor changes.
2001-03	12/2001	Added information in Basis Document concerning a reactor building containment break. Replaced the 2001 calendar with the 2002 calendar. Editorial/minor changes.
2002-01	01/02	<p>The present Oconee Nuclear Station Emergency Operating Procedure is written in a different format and with some different terms than the earlier version. The term PTS (Pressurized Thermal Shock) has replaced TSOR (Thermal Shock Operating Range). This is only a change in terminology.</p> <p>The additional EAL is to ensure a site specific credible threat results in a declaration of a notification of Unusual Event (NOUE). This change is also intended to achieve an appropriate level and consistent response Nationwide.</p>
2002-02	06/02	Section B - minor changes; Section D - Added information requested by Emergency Coordinators to Enclosure 4.1; Section G - Rewrite of entire section; Section H - Updated information on Figure H-4 relating to Met Data; Appendix 5 - Updated Letters of Agreement; and miscellaneous spelling/grammar errors.
2002-03	09/02	Section A - Compliance with the NRC Security Interim Compensatory Measure (ICM) issued 02/25/02; Section P - Audit frequencies per revised 10 CFR 50.54 (t) as stated in Federal Register Vol 64, 03/29/99. Appendix 1 - Added definition of monthly and Semi-Annual; Appendix 5, Agreement Letters, updated #17, Appendix 6 - Changed name on 78A. Miscellaneous corrections.
2003-01	02/03	Section D - RIA setpoints change, Section G - 2003 Calendar, Appendix 3 - Siren upgrade, new map (i-5) ; Appendix 5 - Agreement Letters, Appendix 6 - Issued To change, Section B, E, F editorial/minor changes
2003-02	08/03	Section D - incorporates additional guidance for the Emergency Coordinator/EOF Director related to classification of a high energy line break, such as a Main Steam Line Break. In addition, Section D has been retyped using a consistent font style - no changes in content resulted from the retype.

RECORD OF CHANGES (Continued)

<u>REVISION NUMBER</u>	<u>EFFECTIVE DATE</u>	<u>REASON FOR REVISIONS</u>
2004-01	02/04	Incorporates a retype of the majority of the sections as an editorial change to adopt a consistent format: Section G - Added information concerning One Mile Exclusion Area Signs; Section H - Strip Chart Recorders were removed under an NSM; Section J - Incorporated guidance on the use of KI as a protective action recommendation; Section K - changed KI dose to 5 REM CDE from 25 REM; Appendix 4 - Incorporate results of Evacuation Time Estimate; Appendix 5 - Revised Agreement Letters
2004-02	12/21/04	Editorial changes to correct typos, drawings, and title/organizational names. This revision also incorporates clarifying information from the latest Evacuation Time Estimate (ETE); clarification of offsite agency responsibilities for protective actions for impediments and special populations; revised EAL #2 for Enclosure 4.3, Unusual Event IC #2; clarification of ERO activation after normal working hours; and revisions to the site's SPCC Plan included in Appendix 8. In addition to these changes, applicable references have replaced generic references in Figure P-1. This revision also incorporates the 2005 Calendar distributed to the 10 mile EPZ population.
2005-01	02/01/05	Section D, Enclosure 4.7, Page 66 - Duke Power Hydro-Electric Group has revised the Lake Keowee water level from 807 to 815.5 feet for initiating a Condition B. This elevation is used in Enclosure 4.7 for classifying the event as an Unusual Event. The Hydro -Electric Group notifies the Control Room when Condition B has been declared. No protective actions by the plant are changed.
2005-02	05/17/05	Section I & Letters of Agreement - Incorporates an editorial revision that describes the makeup of Field Monitoring Teams and updated Agreement Letters. I.7&8 replaced "...personnel from Radiation Protection and Chemistry." with "...a RP Technician and a Driver." Editorial Change - Chemistry personnel no longer perform the function of FMT Driver. FMT Drivers are now provided by other groups.
2005-03	08/24/05	Revision 2005-03 incorporates an addendum for the Fire Department/Volunteer Fire Department Agreement Letters. This addendum was added as a result of NRC guidance provided to utilities. The addendum to these letters provides guidance on the use of the Incident Command System at ONS and identifies the ONS Fire Brigade Leader as the on-scene commander and site-interface for responding offsite fire departments.
2005-04	09/15/05	Revision 2005-04 is a change to Page 66, Enclosure 4.7, Emergency Action Levels #1 - Reservoir elevation greater than or equal to 807.0 feet with all spillway gates open and the lake elevation continues to rise. This change undoes Revision 2005-01 which changed Keowee Lake level from 807 feet elevation to 815.5 feet elevation. This revision was determined to be a non conservative change in that it delayed the Unusual Event emergency classification. Appendix 5, Agreement Letter #21 has been updated.
2005-05	01/09/06	Revision 2005-05 incorporates editorial changes that clarify organizational charts/responsibilities, revise procedure references, replaces public information calendar, and replaces obsolete survey instruments. Agreement Letters #16 and #19 were updated.

RECORD OF CHANGES (Continued)

<u>REVISION NUMBER</u>	<u>EFFECTIVE DATE</u>	<u>REASON FOR REVISIONS</u>
2006-03	06/8/06	Section D - Change #1 Revised initiating condition #2 for the Alert classification for Enclosure 4.6 (Fire/Explosions and Security Events). This change is based on a correction to the NEI White Paper, Enhancements to Emergency Preparedness Programs For Hostile Actions which was endorsed in a letter from the NRC on December 8, 2005. Change #2 - Renumbered Emergency Action Levels throughout Section D to match the numbering scheme found in RP/0/B/1000/001 (Emergency Classification) procedure - Renumbering makes it easier for procedure users to locate the correct emergency action level in the Basis Document. Appendix 5 - Agreement Letters #8, 14,15 & 23 were updated.
2006-04	11/06	Reference changes to the deletion of the Clemson EOF and incorporates reference to the Charlotte EOF. In addition, miscellaneous editorial changes are included in this revision.
2007-01	03/07	Appendix 5 Agreement Letters that have been updated/revised.
2007-02	12/07	Editorial changes including a revised 50 mile radius map (Figure B), a revision to the Emergency Classification Basis Section D , the 2008 Emergency Planning Calendar, a revised layout drawing for the JIC, a revised listing of portable survey instruments, the latest renewal of existing agreement letters and a revised Ground Water Monitoring Plan
2008-01	09/08	The original order of the EALs created a human performance trap. The first fission barrier column that the procedure user reviews is the RCS Barrier column which is on the left side of the page. The second fission barrier column that is reviewed is the Fuel Clad Barrier which is in the center of the page. This order gives the procedure user the mindset that the EALs are listed in the same order: RCS EAL followed by the Fuel Clad EAL. Changing the order of the EALs is not a deviation from the approved EAL scheme but is a difference. This change does not constitute a decrease in the effectiveness of the EPLAN since the EALs are exactly the same.
2008-02	10/08	As of this change 2008-02, the Emergency Plan is now available on NEDL/SCRIBE and has been completely re-issued. All changes in the future to the Emergency Plan will be completed thru NEDL/SCRIBE. The following Agreement Letters were also updated: 1, 2, 3, 4, 5, 6, 7, 9, 10, 11, 19 and 21.
2009-01	02/09	Revised existing information relating to organization names that have changed, removed specific names and replaced with a title to mitigate the need for future revisions due to personnel changes, and changed staging location names based on changes made to area designation names; however staging will still occur in same area. Changes made only reflect actual organization names, functional position names, and current location names being used to make the E-Plan more accurately reflect current information. No changes are being made to the process or conduct of the how the E-Plan is to be implemented.

RECORD OF CHANGES (Continued)

<u>REVISION NUMBER</u>	<u>EFFECTIVE DATE</u>	<u>REASON FOR REVISIONS</u>
2010-10	02/10	Revised existing information relating to changes made to the callback system, who performs the dose assessments, the basis information for the Containment Barrier EAL based on NEI 99-01 Rev 5 FAQ lessons learned. Made name change for Oconee Medical Center, corrected information relating to testing frequency for major elements referenced in the E-Plan, the new neutron instrument used by radiation protection, and street name change for figure H-3A. Changes made are the result of the Annual Review process and no changes are being made to the process or conduct of how the E-Plan is to be implemented. The following Agreement Letters were also updated: Number - 6, 8, 13, 14, 15, 16, 18, 20, 22, & 23.
2011-01	05/11	Figure B-10 - Redistribution of support for Field Monitoring Teams from Chemistry to Business Management and Work Control. Section D - Basis corrected to delete reference to USFAR Table 15-114 which has been deleted, revised ICs 4.3.A.3 and 4.4.A.3, EAL A to align with RP/0/B/1000/001, revised ICs and EALs to add levels of operating modes that represent the operating levels of hot shutdown, cold shutdown and hot standby were listed, added "AC" back to IC 4.5.A.1 where it had been inadvertently deleted, add SSF to IC 4.6.U.1, correct IC 4.5.G.1, EAL 1 to reflect SSF maintaining Mode 3 (hot standby) rather than hot shutdown, add new ICs for Jocassee Dam condition A and B declarations, correct misprint in IC 4.7.A.2, EAL B, correct formatting errors, and add Security EALs. Section F - deleted onsite areas requiring phone notifications for site assembly due to new wireless system being installed in those areas. Section G - replace 2010 calendar with 2011 calendar. Figure H-1 - revised room layout to reflect current arrangement. Section N - Revised the testing cycle for the EPLAN from a 5 year cycle to a 6 year cycle. Appendix 5 - update letters of agreement.
2011-02	10/11	This evaluation supports a request to revise the Oconee (ONS), McGuire (MNS), and Catawba (CNS) Emergency Plans to allow for an alternate approach for compliance with 10 CFR 50.47(b)(2) relative to meeting the minimum staffing requirement during emergencies for site Radiation Protection (RP) personnel and the Emergency Operations Facility (EOF) position staffing to that in Table B-1 in NUREG-0654, endorsed by Regulatory Guide 1.101.
2012-01	06/12	Section F - A change to the process for answering the 4911 emergency phone calls. The new process will have both Operations and Security(SAS) answering the phone. Appendix 7 -Will clarify the ERDS related system description verbiage from the modem based data transfer system to the new VPN System.
2012-02	06/12	The NRC published Federal Register notice [RIN 3150-AI10], "Enhancements to Emergency Preparedness Regulations" on November 23, 2011. The amendments contained in the rule are summarized as twelve (XII) topics with varying implementation due dates. Emergency Plan changes to the following sections (C, D, H, I, J, P, and Appendix 1) are made in accordance with the rule and the appropriate guidance documents pertaining to Topic V – Emergency Action Level for Hostile Action, Topic VI – Emergency Declaration Timeliness, Topic VIII – Emergency Operation Facility (Performance Based), Topic IX – Emergency Response Organization Augmentation at Alternate Facility, and Topic XI – Protective Actions for On-site Personnel.

RECORD OF CHANGES (Continued)

<u>REVISION NUMBER</u>	<u>EFFECTIVE DATE</u>	<u>REASON FOR REVISIONS</u>
2012-03	06/13	Added Agreement Letter 25 - G&G Metal Fabrication to provide Hale pump technical support and Agreement Letter 26 Operating Agreement between Duke Energy's Lincoln Combustion Turbine Facility & MNS, CNS and ONS Nuclear Supply Chain concerning an Emergency Supply of Diesel Fuel.
2012-04	12/12	Section B - This change is to incorporate the new staffing analysis for the new EP rule and editorial changes.
2012-05	12/12	<p>Revised Section D, Enclosure 4.3 to add threshold values for unit vent sampling as a compensatory measure. Unit vent sampling is performed on the 6th floor auxiliary building at sampling equipment where manual grab samples are retrieved per HP/0/B/1000/060-D. Additionally, the use of RIA 56 was added as a compensatory measure for Site Area Emergency and General Emergency Classifications.</p> <p>This change allows for classification of gaseous radiological releases in the event of a loss of either RIA-45 or 46. This change only clarifies the values to be used in the event normal monitoring is not available.</p> <p>The plan is also being revised based on annual review requirements, changes are mainly editorial or formatting. Additional changes are being made to reflect current name changes, update Agreement letters, Spill Prevention and Control, and Groundwater monitoring programs.</p>
2013-01	10/13	<ul style="list-style-type: none"> • Section D - Added clarification in the basis for Loss of Shutdown function. • Section I - Revised to reference procedures versus RPSM 11.7 which has been deleted. • Section J - Revised to incorporate latest revision to ETE. Deleted climate data tables which were duplicative to information contained within the ETE (Appendix 4). • Section P - Updated appropriate references. • Appendix 4 - Added latest ETE as reference.
2014-01	03/14	<ul style="list-style-type: none"> • Section B - Removed reference to having home addresses listed in the emergency telephone directory as these were never listed in the telephone directory and clarified EOF Services Group actions. Updated titles of ERO positions in the TSC and OSC consistent with duty roster. • Section D - Added clarification for which RIA-45 is to be used. Respectively, it is expected that 1RIA-45, 2RIA-45 and 3RIA-45 would be used in connection with Enclosure 4.3, Abnormal Rad Level/Radiological Effluent. 4RIA-45 is not specifically related to a unit and therefore it is not applicable to Enclosure 4.3. • Section G - Removed Calendar and replaced with Note that the calendar is retained on file with EP Staff. • Section H - Eliminated drawings of Alternate TSC and Alternate OSC as these are for implementation and not needed in Emergency Plan. Removed implementation details from Primary TSC and Primary OSC drawings. Corrected Figure H-20 and shifted table alignment. • Section J - Provided editorial corrections to procedure numerical references where applicable. • Section M - Provided clarification of EOF Services listed on Figure M-2. • Section P - Provided editorial corrections to procedure numerical references where applicable, and changed a reference from the EP Functional Area Manual to a fleet administrative procedure reference (EP FAM to AD-EP-ALL-0001). Eliminated reference to HR Emergency Plan. • Appendix 5 - Removed all copies of the Letters of Agreement and indicated they are included by reference. The actual Letters of Agreement are retained on file by the EP Staff.

RECORD OF CHANGES (Continued)

<u>REVISION NUMBER</u>	<u>EFFECTIVE DATE</u>	<u>REASON FOR REVISIONS</u>
2014-02	10/14	<ul style="list-style-type: none"> • Section A - Revised for change from pagers to notify the ERO to using cell phones. Shift Manager delegates actual activation of notification device to Security if available or qualified operator if security is unable. • Section B - Revised responsibility for Radwaste function from Chemistry Group to Operations Group. • Section D - Revised responsibility for Radwaste function from Chemistry Group to Operations Group, including reference to chemistry procedures to operation procedures. • Section F - Revised for change from pagers to notify the ERO to using cell phones. Shift Manager delegates actual activation of notification device to Security if available or qualified operator if security is unable. • Section G - Procedure number changes • Section H - Removed specific locations of kits as these were insufficiently detailed and did not contain all kit locations. • Section I - Procedure number changes. • Section J - Procedure number changes. • Section M - Procedure number changes, title changes. • Section N - Changes to show new rules including 8 year cycle, consistency with fleet documents practices, and format. • Section P - Revised responsibility for independent audit from NSRB to NOS Manager, deleted duplicated paragraph and updated the listing of the implementing procedures. • Appendix 6 - Updated distribution list to reflect new format of E Plan and associated implementing procedures.
2014-003	12/14	Changes made associated with the modification from Raddose V to URI, and updates to WEBEOC.
2015-001	01/15	Changes made to Section F, EOF Communications and Figure F-1.
2015-002	03/15	Changes made as a result of superseding SH/0/B/2005/002, EP Fam 3.19 and Appendix 5.
2015-003	04/15	Changes made to Section D consisting of Protected Service Water replacing the Station Auxiliary Service Pump as a result of system modification. Replaced Selective Signaling with DEMNET
2015-004	5/15	<p>E-Plan changes made to Sections App 3, D, F, H, K, & P and the Table of Contents consisting of AD-EP ALL-0203 & AD-EP ALL-0204 procedure reference changes and changes from Selective Signaling to DEMNET. Also includes title changes from Operations Shift Manager to Shift Manager.</p> <ul style="list-style-type: none"> • Appendix 3: Revised Selective Signaling to DEMNET • Section D: Revised Selective Signaling to DEMNET and removed OSM • Section F: Revised Selective Signaling to DEMNET, removed OSM, and SH/0/B/2005/002 to AD-EP ALL-0203 • Section H: Removed specific equipment reference to reduce E-plan revisions • Section K: Implementation for AD-EP-ALL-0204 for administration of KI, and title changes from Operations Shift Manager to Shift Manager • Section P: Reference updates SH/0/B/2005/003 to AD-EP ALL-0204
2015-006	9/15	E-Plan changes made to Section H and Section P, consisting of Emergency Operating Facility (EOF) changes and revised ONS floor plans to correctly indicate ERO positions within ERFs in Section H and update procedure references in Section P.

RECORD OF CHANGES (Continued)

<u>REVISION NUMBER</u>	<u>EFFECTIVE DATE</u>	<u>REASON FOR REVISIONS</u>
2015-007	4/16	Changes to update Letters of Agreements and references throughout; State of SC supersedes SC Highway Patrol and SC Law Enforcement Division, Greenville Health System has acquired Oconee Medical Center and Blue ridge Physicians. Change to enhance the BASIS of 4.6.U.1 to add damage to 'nearby' equipment in response to AR 01910385, clarifies damage isolated to non-safety components would not necessitate entry in to an Unusual Event. Enhancement in Section D to the terms 'Condition A' , which will be replaced by the term 'Imminent Failure' and 'Condition B' which will be replaced by 'Potential Failure' in 2016. The change was driven by FERC in order to minimize confusion when communicating with offsite organizations in accordance with Hydro Emergency Action Plans. Change corrected spelling from Manger to Manager on p. F-4. change 15 updated Figure J-5 to current Site Layout, added Site Support Complex, PSW Building and labeled RP Building.
2016-001	6/16	E-Plan change made to Appendix 8, Spill Prevention, Control and Countermeasure Plan (SPCC Plan), 1) revised contents of the SPCC due to change in inventory on site, addition of new used oil storage area, update to contact information and name change from Duke Power to Duke energy. 2) Moved the contents of the SPCC out of the Emergency Plan and include by reference the location as an implementing program of the Emergency Plan. Hard copy to be maintained by Environmental Services and retrievable electronically in Fusion. AR 02031855.
2016-002	9/16	Section A/Appendix 5; Revised wording to remove the requirement to update Letters of Agreement (LOA) and Memoranda of Understanding(MOA) every three years, changed to review annually and revise as necessary during Emergency Plan certification review Section B; Change to keep responsibility for 'Classification' on site by SM/EC or TSC/EC after EOF is activated. Section H; Title change from 'Backup' ERF's back to 'Alternate', changed in error in revision 2014-002 due to misinterpretation of definitions. This change will be in compliance with the definitions found in NEI 13-01, no change to the facilities. Section M; 1) Revised ONS Spill Response procedure to Fleet Spill Response Procedure. 2) Added description of recovery activities following Beyond Design Basis Natural Event from INPO L4-13-3 Section P; 1) Title change to revise ONS Spill Response procedure to Fleet Spill Response Procedure.
2016-003	12/16	Section B; Revised to clarify the requirements for minimum staffing in Figure B-8b, Offsite Communicators (2), one of the Communicators is the NRC Communicator. Section F, Clarify that ERO activation is at the discretion of the SM/EC for UE, required at Alert and higher. Clarify Site Assembly is required at an Alert or higher. Change Backup to Alternate TSC housekeeping issue per the guidance in NEI 13-01. (PRR 02080151) Section P; 1) Title change to revise ONS Spill Response procedure to Fleet Spill Response Procedure. Appendix 9, Removed the Ground Water Monitoring Plan from the Emergency Plan and implemented by reference, 50.54q statement added to the document and documented location in Fusion. Appendix 10, Removed the Hazardous Materials Response Plan from the Emergency Plan and implemented by reference, 50.54q statement added to the document and documented location in Fusion.

B. ONSITE EMERGENCY ORGANIZATION

Adequate staffing to provide for initial emergency response in key functional areas is maintained at all times, timely augmentation of response capabilities is available, and the interfaces among various onsite response activities and offsite support and response activities are specified.

B.1. Emergency Response Organization

Figures B-1 through B-6 shows the Oconee Nuclear Site Emergency Response Organization that would be established during an incident along with the duties the different groups would assume. Designation of personnel to the Emergency Response organization is determined by the particular job expertise of an individual. This assures that these personnel are qualified to carry out their responsibilities during an emergency. The normal staffing assignments at the Oconee Nuclear Site include emergency response responsibilities. See Figures B-10 for emergency responsibilities for designated groups.

The Emergency Response Organization is outlined in Division/Section Directives. These directives establish the duties, responsibilities and alternates for each required emergency response position. Response procedures have been established for each section through these Directives.

B.2. Emergency Coordinator - (24 hour)

As a result of training and day-to-day experiences in the normal operating mode at the Oconee Nuclear Site, the Operations Shift Manager will assume authority and responsibility for any emergency that may arise at the site. He will assume control of the situation, alert and warn personnel and others, take necessary onsite remedial action, obtain necessary outside aid and notify management and appropriate offsite agencies. The authority vested in this position by Duke Energy management enables the Operations Shift Manager to declare an emergency as necessary to protect the plant, site personnel, and the general public. He is vested with the authority to provide protective action recommendations to state and local agencies for implementing offsite emergency measures.

The Operations Shift Manager will continue with these responsibilities until relieved by the Station Manager (alternate).

B.3. Alternates for Emergency Coordinator

In an emergency situation where the Station Manager/Emergency Coordinator is unavailable, for whatever reason, and an acting Station Manager has not been designated in writing, an alternate will be contacted. Alternates are personnel with intimate knowledge of plant operations and will fulfill the position as TSC Emergency Coordinator when assigned duty. Alternates are designees appointed by the Station Manager.

Note: **Emergency Telephone Directory, provides names and phone numbers for the Emergency Coordinators listed above.**

B.4 Functional Responsibilities of the Emergency Coordinator

Figure B-5 defines the duties and responsibilities of the Emergency Coordinator within the emergency response organization.

The Emergency Coordinator and the EOF Director are the individuals responsible for making protective action recommendations to the state and county agencies. Once the Emergency Operations Facility is activated, only the EOF Director has this responsibility. Prior to the activation of the EOF, the Emergency Coordinator is responsible for making protective action recommendations, classifying/downgrading/escalating/terminating events, and approving notification forms to offsite agencies. Once the EOF is activated, the Emergency Coordinator will retain responsibility for making classifications. These responsibilities may not be delegated.

IF AT ANY TIME the EOF is Activated, **THEN** the following applies:

- Classification of events are performed by either the TSC or Control Room
 - Immediate communication to the EOF is required upon upgrade of a classification of an event either the TSC or Control Room
 - Notification of Offsite Agencies are performed by the EOF
- Protective Action Recommendations (PAR) are performed by the EOF.

B.5 Minimum Staffing Requirements for Nuclear Power Plant Emergencies

Figure B-8(a/b) identifies the positions by title and major tasks to be performed by the persons assigned to the functional areas of emergency activity within 45 to 75 minutes. The TSC and OSC will be activated within 75 minutes of event classification. The EOF (Figure B-9) will also be staffed and operational by a minimum staff within 75 minutes of event classification.

A detailed analysis demonstrating that on-shift personnel assigned emergency plan implementation functions are not assigned responsibilities that would prevent the timely performance of their assigned functions as specified in Figure B-8a is located in ONS-OSSA-12212012 Rev: 0.

B.6 Interface - Onsite, Offsite Organizations

(Figure A-1) shows the interfaces between and among the onsite functional areas of emergency activity, site support, local services support, and State and Local government response organizations. The onsite Technical Support Center, Operational Support Center, and the Emergency Operations Facility is shown.

B.7 Minimum Staffing Requirements - Corporate Level

Personnel from the corporate location will provide assistance to the Oconee Nuclear Station in the areas of dose assessment, coordination of news media and severe accident analysis. These people will respond on an as needed basis.

The Emergency Response Facility Organization is shown on Figures B-4A through B-4D. Division/Section Directives detail the emergency response organization and are included as implementing procedures.

Should an event occur at another Duke Energy nuclear facility concurrent with an event at Oconee Nuclear Site, additional resources would be required to support the EOF Organization. Figure B-11 shows the supplemental EOF organization that would be required to manage a multi-site event. An additional Assistant EOF Director would function as the lead manager to support the second site. The EOF Director would have overall emergency management responsibility for both events.

B.8 Contractor/Private Organizations - Technical Assistance

Private Contractors and/or companies that would be available to augment and support the emergency organization:

Waste Management	Chem Nuclear
Bartlett Nuclear	Emergency Equipment Supplier
SEG	(e.g. Safe Industries, Inc.)
Alaron	AREVA

Additional groups that could respond to emergencies would be contacted by the EOF Services Group at the Emergency Operations Facility.

B.9 Local Agency Support

Agreements with local agency support groups have been made to assist the Oconee Nuclear Site during emergency situations.

POLICE -

Oconee Sheriff's Department

Pickens Sheriff's Department

State of South Carolina - S. C. Highway Patrol and S. C. Law
Enforcement Division

AMBULANCE -

Oconee Memorial Hospital - Emergency Medical Services

MEDICAL -

Oconee Memorial Hospital - Greenville Health System

FIRE FIGHTING -

Oconee Rural Fire Association

Keowee-Ebenezer Fire Department

Corinth-Shiloh Fire Department

Six-Mile Fire Department

Keowee Fire Department

RADIOLOGICAL MONITORING -

Pickens County Emergency Management Agency

Oconee County Emergency Management Agency

EVACUATION OF POPULATION -

Oconee County Emergency Management Agency

Pickens County Emergency Management Agency

HOSPITAL -

Oconee Memorial Hospital

USE OF BUILDINGS -

Oconee County School District

Pickens County School District

FIGURE B-1
OCONEE NUCLEAR STATION
EMERGENCY RESPONSE ORGANIZATION
FUNCTIONAL AREAS OF EMERGENCY RESPONSE

1. Emergency Response Coordination
 Operations Shift Manager
 Station Manager
 Division Managers
 Section Managers

2. Plant Systems Operations
 Superintendent of Operations
 Operations Shift Managers
 Operations Engineers
 On Shift Staff (Operations)
 Engineering

3. Accident Assessment
 Emergency Coordinators
 Operations Shift Managers
 Operations Engineers
 Shift Managers
 Site Engineering
 Severe Accident Analysis Group (GO)

4. Radiological Environmental Survey and Monitoring
 Contract service
 Radiation Protection Section

5. First Aid/Rescue, Firefighting
 Medical Emergency Response Team Members
 Fire Brigade

6. Personnel Monitoring
 Radiation Protection Section

7. Decontamination
 Radiation Protection Section

FIGURE B-1
OCONEE NUCLEAR STATION
EMERGENCY RESPONSE ORGANIZATION

8. Security of Plant and Access Control
 Duke Security (ONS and Oconee JIC)
 Building Security/Access & Control (Charlotte EOF)
9. Repair/Corrective Actions
 Nuclear Supply Chain
 Site Services Group
10. Personnel Accountability
 Division Managers
 Section Managers
 Supervisors
 Duke Security
11. Radiological Accident Assessment
 Radiation Protection Section (ONS/GO/CNS/MNS)
 Site Engineering
 Operations Group
 Chemistry Group
 Severe Accident Analysis Group (GO)
12. Communications
 Operations
 Safety Assurance
 Training
 Nuclear Assurance
13. Radiation Protection Section
 Radiation Protection Section
14. Plant Chemistry
 Chemistry Group

FIGURE B-1
OCONEE NUCLEAR STATION
EMERGENCY RESPONSE ORGANIZATION

- 15. Radwaste Operations
 Operations Group
- 16. Technical Support
 Site Engineering
- 17. Manpower Planning and Logistical Support
 Work Control Group
 Nuclear Supply Chain
 Site Services Group
- 18. Public Information
 Corporate Communications - Joint Information Center
- 19. Licensee Representative to State County EOC
 Site Engineering

FIGURE B-2
OCONEE NUCLEAR STATION
TECHNICAL SUPPORT CENTER ORGANIZATION CHART

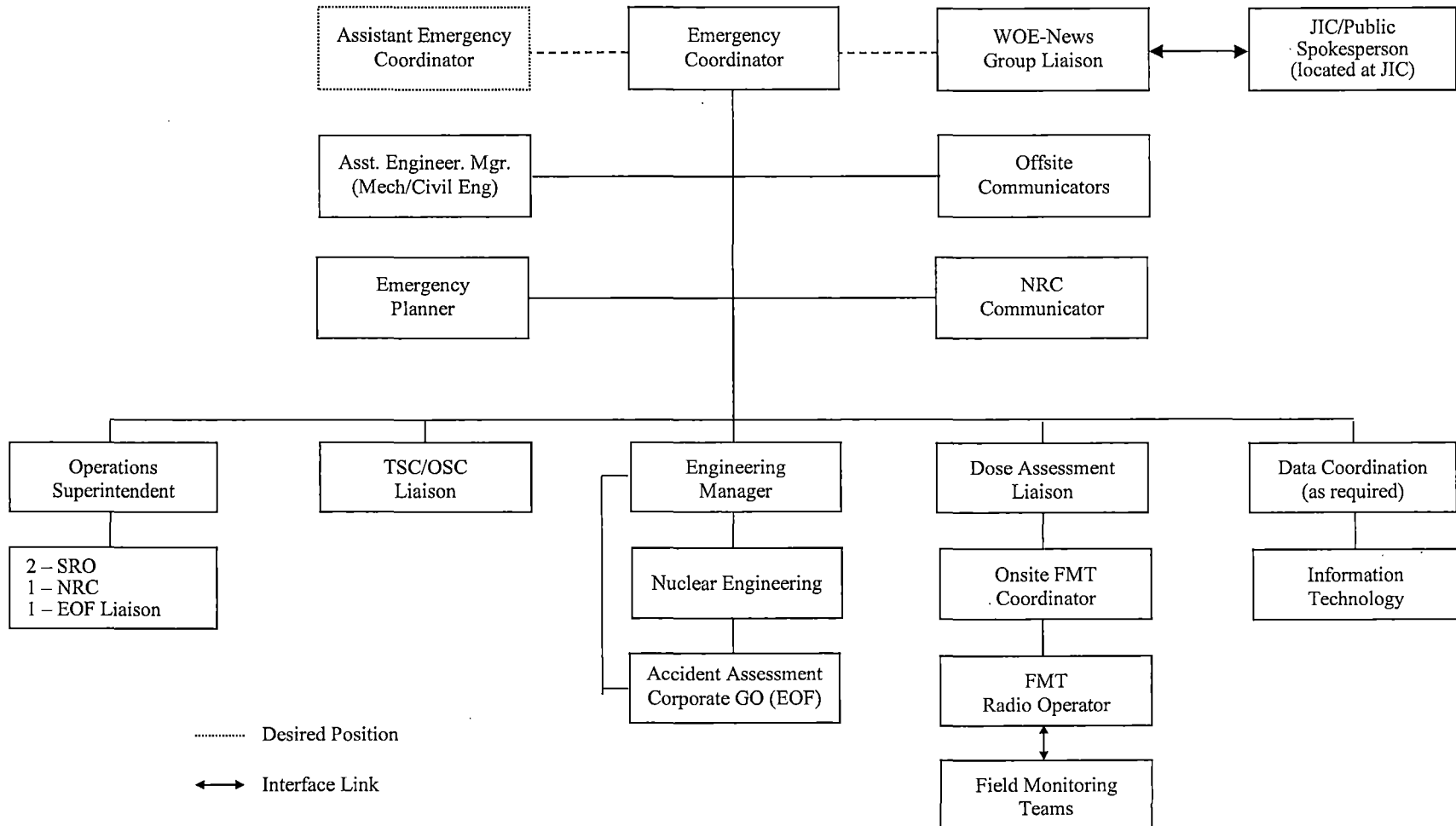


FIGURE B-3
OCONEE NUCLEAR STATION
OPERATIONAL SUPPORT CENTER ORGANIZATION CHART

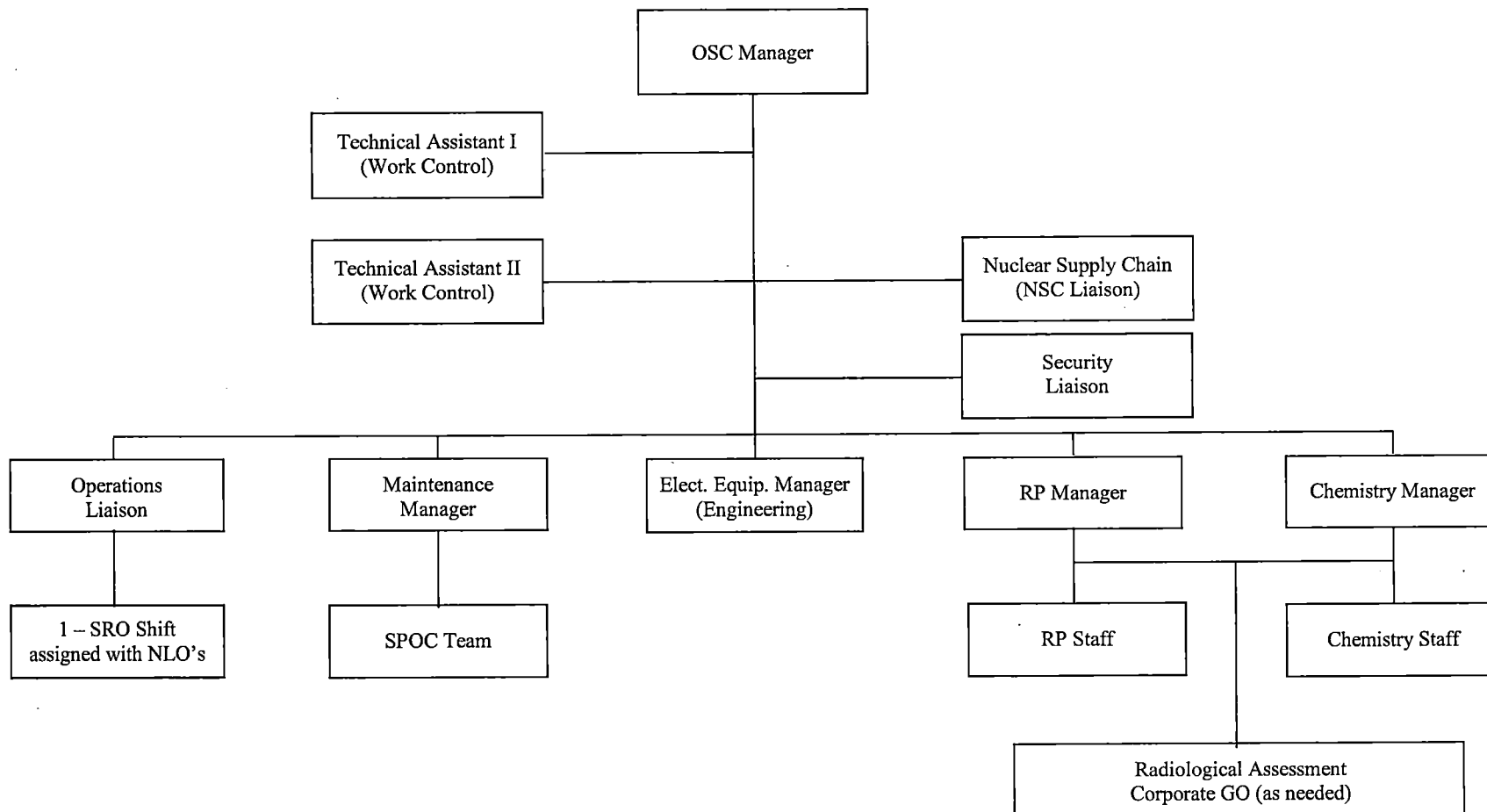


FIGURE B-4A
OCONEE NUCLEAR STATION
Emergency Operations Facility

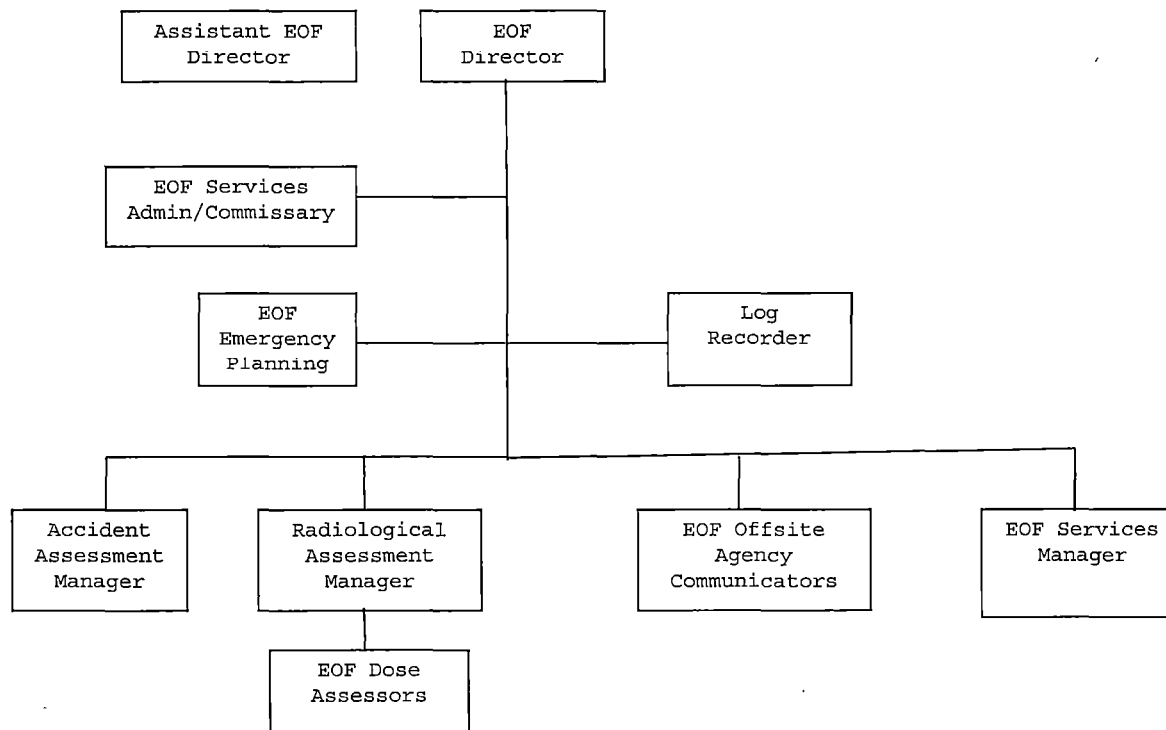


FIGURE B-4B
DUKE ENERGY COMPANY
OCONEE NUCLEAR STATION
EMERGENCY OPERATIONS FACILITY

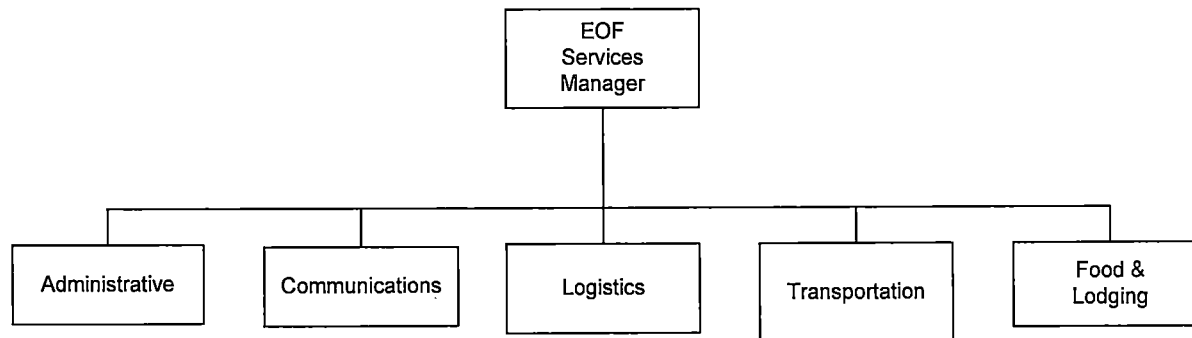


FIGURE B-4C
OCONEE NUCLEAR STATION
EMERGENCY OPERATIONS FACILITY

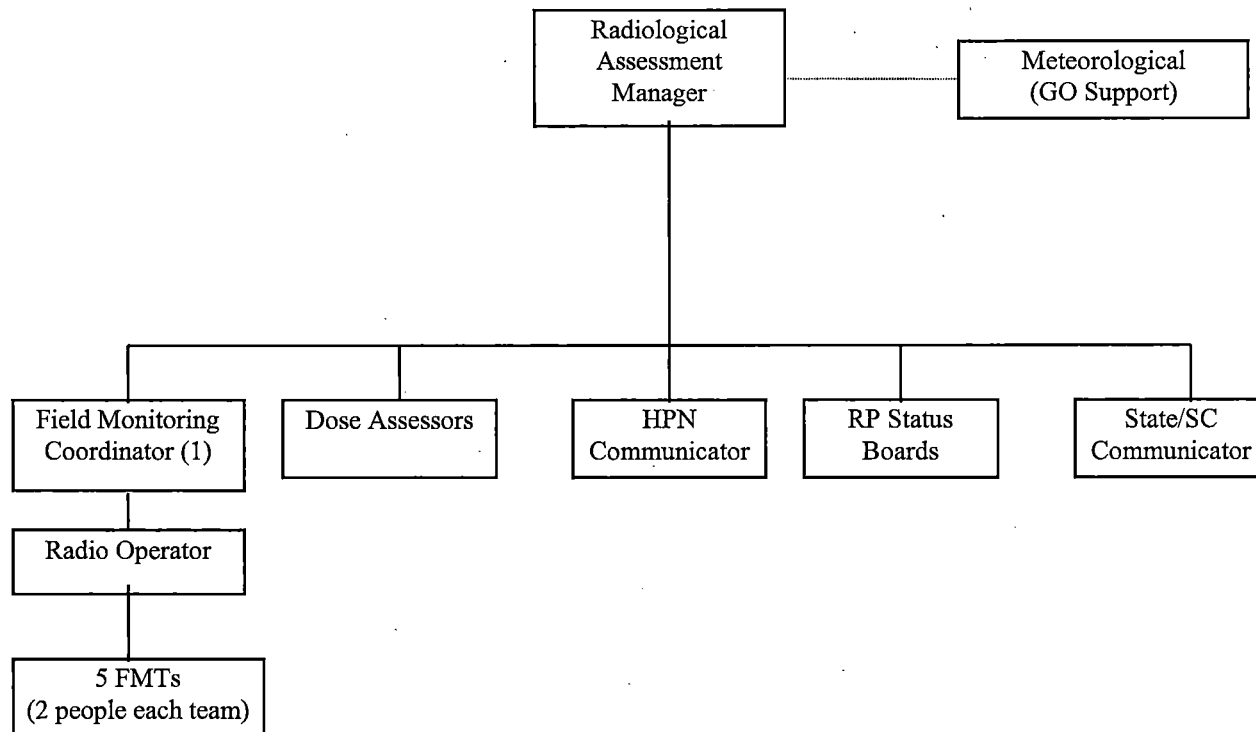


FIGURE B-5
OCONEE NUCLEAR STATION
EMERGENCY COORDINATOR DUTIES

Duties and Responsibilities:

1. Activate the Emergency Response Organization (Technical Support Center, Operational Support Center and the Emergency Operations Facility).
2. Coordinate technical assistance for remedial actions to mitigate circumstances surrounding plant operations.
3. Designate individual to communicate with offsite agencies promptly. Approve all information released via the emergency notification form. Approval (signature) of contents of message form may not be delegated to others in the emergency organization.
4. Initiate emergency actions within the provisions of the Oconee Nuclear Site Emergency Plan.
5. Classify emergency events. Escalate/de-escalate or terminate from an emergency status. Responsibility may not be delegated.
6. Make senior technical and management staff available onsite for consultation with NRC and State on periodic basis if EOF has not been activated.
7. Coordinate all emergency actions concerning the technical aspects of the corrective actions taken within the Technical Support Center.
8. Evacuate all non-essential personnel on site if a radiological emergency exists. Be aware of exposure guidelines of personnel.
9. Recommend protective action guides for the safety and welfare of the public to the appropriate offsite agency if the Emergency Operations Facility/EOF Director is not in a position to do so. This authority may not be delegated.
10. Authorize exposures in excess of routine yearly exposure limits for lifesaving and equipment repair missions in accordance with RP/0/B/1000/011. This responsibility can be delegated to the RP Manager in the OSC.

FIGURE B-6
OCONEE NUCLEAR STATION
EMERGENCY OPERATIONS FACILITY DIRECTOR

Duties and Responsibilities:

1. Overall Management of the offsite emergency response activities of Duke Energy (Oconee Nuclear Site).
2. Recommend protective action guides for the safety and welfare of the public to the appropriate offsite agency. This authority may not be delegated.
3. Approve all information released via the emergency notification form. Approval (signature) of contents of message form may not be delegated to others in the emergency organization.
4. Coordination with federal, state and local government agencies.
5. Provide approval of news releases if Public Spokesperson is unavailable.

FIGURE B-8a
OCONEE NUCLEAR STATION
MINIMUM ON-SHIFT STAFFING LEVELS

Functional Area	Major Tasks	Emergency Positions	Shift Staffing
1. Plant Operations and Assessment of Operational Aspects (a)	--	CR Supervisor (SRO) Control Room Operator (RO) Non-Licensed Operator (NLO)	3 6 3
2. Emergency Direction and Control	Command and Control	Ops Shift Manager	1
3. Notification & Communication	Licensee	Operator (SRO/RO/NLO)	1 ^(b)
	Local/ State	Operator (SRO/RO/NLO)	1
	Federal	Operator (SRO)	1 ^(b)
4. Radiological Assessment	Dose Assessment	RP Qualified Individual	1
	In-plant Surveys	RP Qualified Individual	1
	Onsite Surveys	RP Qualified Individual	1
	Chemistry	Chemistry Technician	1
5. Plant System Engineering, Repair, and Corrective Actions	Tech Support – OPs – Core Damage	Shift Technical Advisor Shift Technical Advisor	1 1 ^(b)
	Repair and Corrective Actions	Mechanical Maintenance IAE Maintenance	2 2
	6. In-Plant PAs	Radiation Protection (such as access control, job coverage and personnel monitoring)	RP Qualified Individual
7. Fire Fighting (c)	--	Fire Brigade Lead (SRO/NLO) Fire Brigade Member (NLO) Fire Brigade Member	1 4 5 ^(b,c)
8. 1 st Aid and Rescue	--	MERT (d)	2
9. Site Access Control and Accountability	Security & Accountability	SAS Operator Security Personnel	1 (e)
Minimum # of Personnel:			31

- (a) The Control Room staff complement is reflective of 3 Units in operation.
- (b) May be performed by an individual filling another position provided they are qualified to do the collateral function.
- (c) The Fire Brigade requirement of ten members is met by using five personnel from Operations (including the Fire Brigade Leader) and five personnel from either SPOC, Radiation Protection, Chemistry or Security (SLC 16.13.1).
- (d) The Medical Emergency Response Team (MERT) can be filled by any qualified technician.
- (e) Per Duke Energy ONS Security Plan.

FIGURE B-8b
OCONEE NUCLEAR STATION
MINIMUM AUGMENTED ERO STAFFING LEVELS

MAJOR FUNCTIONAL AREA	MAJOR TASKS	POSITION TITLE OR EXPERTISE	CAPABILITY FOR ADDITIONS*	
			WITHIN 45 MINUTES	WITHIN 75 MINUTES
Emergency Director and Control (Emergency Coordinator) ***		Station Manager	—	1
Notification/Communication	Notify Company Personnel, State, County, Federal Agencies and maintain communication	State/County Communicator NRC Communicator		1 1
EOF/Radiological Accident Assessment and Offsite Agency Support	EOF Director (Protective Action Recommendation, Offsite Agency Interface, ENF approval)	DPC Senior Manager	—	1
	EOF Plant Assessment	Accident Assessment Manager	—	1
Dose Assessment and Protective Action Recommendations	EOF Offsite Dose Assessment/Protective Action Recommendations	Radiological Assessment Manager	—	1
Offsite Notifications	EOF Offsite Agency Notifications	Offsite Agency Communicator	—	1
		Offsite Agency Communicator	—	1
	EOF Access Control	Electronic Card Reader	—	#
Dose Assessment and Protective Action Recommendations	TSC Dose Assessment/Protective Action Recommendations	Radiological Assessment	—	1
	Offsite Surveys	Field Monitoring Teams (2)		4 ****
	Onsite Surveys (Out-of-Plant)	RP Qualified Individuals	1	1
	In-Plant Surveys	RP Qualified Individuals	1	1
	Chemistry/Radio Chemistry	Rad/Chem Technician	—	1
Plant System Engineering, Repair and Corrective Actions	Technical Support	Core/Thermal Hydraulics	—	1
		Electrical	—	1
		Mechanical	—	1
	Repair and Corrective Actions	Mechanical Maintenance	—	1
		Rad/Waste Operator	—	1
		I&E Technician	—	2
Protective Actions (In-Plant)	Radiation Protection A. Access Control B. RP Coverage for Repair Corrective Actions, Search and Rescue, First Aid & Firefighting C. Personnel Monitoring D. Dosimetry E. On-Shift Dose Assessment	RP Qualified Individuals	—	4
Firefighting	—	Fire Brigade		Local Support
Rescue Operations & First-Aid	—	MERT Team		Local Support

FIGURE B-8b
OCONEE NUCLEAR STATION
MINIMUM STAFFING LEVELS

- * Consideration is given to the fact that many of the Oconee Nuclear Site Emergency Response Organization personnel do not live within a radius of the station which will allow a response time of 30 minutes or less under ideal conditions. Factors such as weather conditions, road capacity and traffic density, and the distance to travel from residence to the emergency response facility, indicate a realistic response time from a few minutes to 1 hour and 15 minutes for most employees. Consideration is also given to personnel on shift who are qualified and sufficient in number to handle any emergency condition until response personnel begin to arrive on site.

- *** Management of the Offsite Emergency Response will be assumed by the EOF Director when the Emergency Operations Facility is activated.

Management of the Onsite Emergency Response is assumed by the Station Manager/alternate acting as the Emergency Coordinator when the Technical Support Center and Operational Support Centers are activated.

- **** The Field Monitoring Teams will initially report to the Body Burden Analysis (BBA) Room. If needed, the Field Monitoring Teams will dispatch from the Body Burden Analysis (BBA) Room. Once the Emergency Operations Facility (EOF) Field Monitoring Coordinator is ready he/she will assume control of the Field Monitoring Teams. A FMT consists of one RP qualified individual and one vehicle driver.

- # An electronic card reader in conjunction with a posted building security officer fulfills the function for controlling access to the EOF during emergencies.

FIGURE B-9
OCONEE NUCLEAR STATION
MINIMUM STAFFING REQUIREMENTS

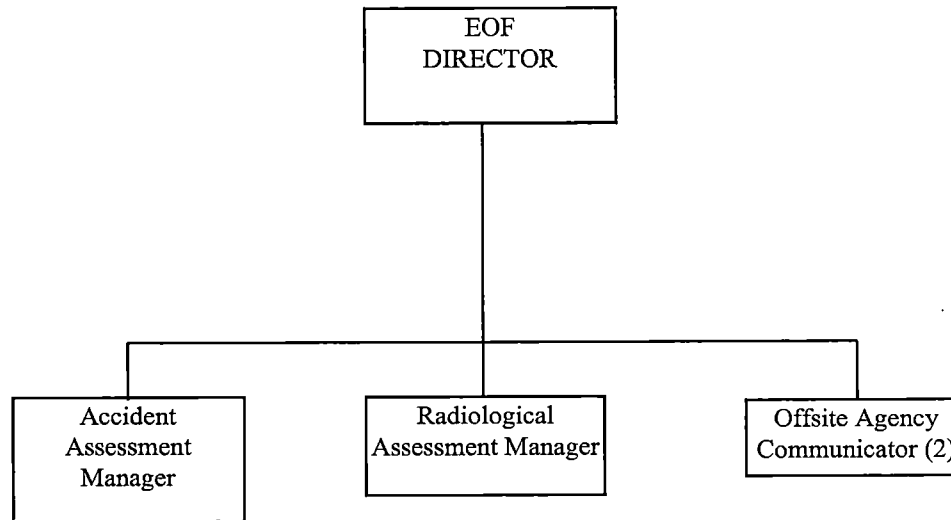


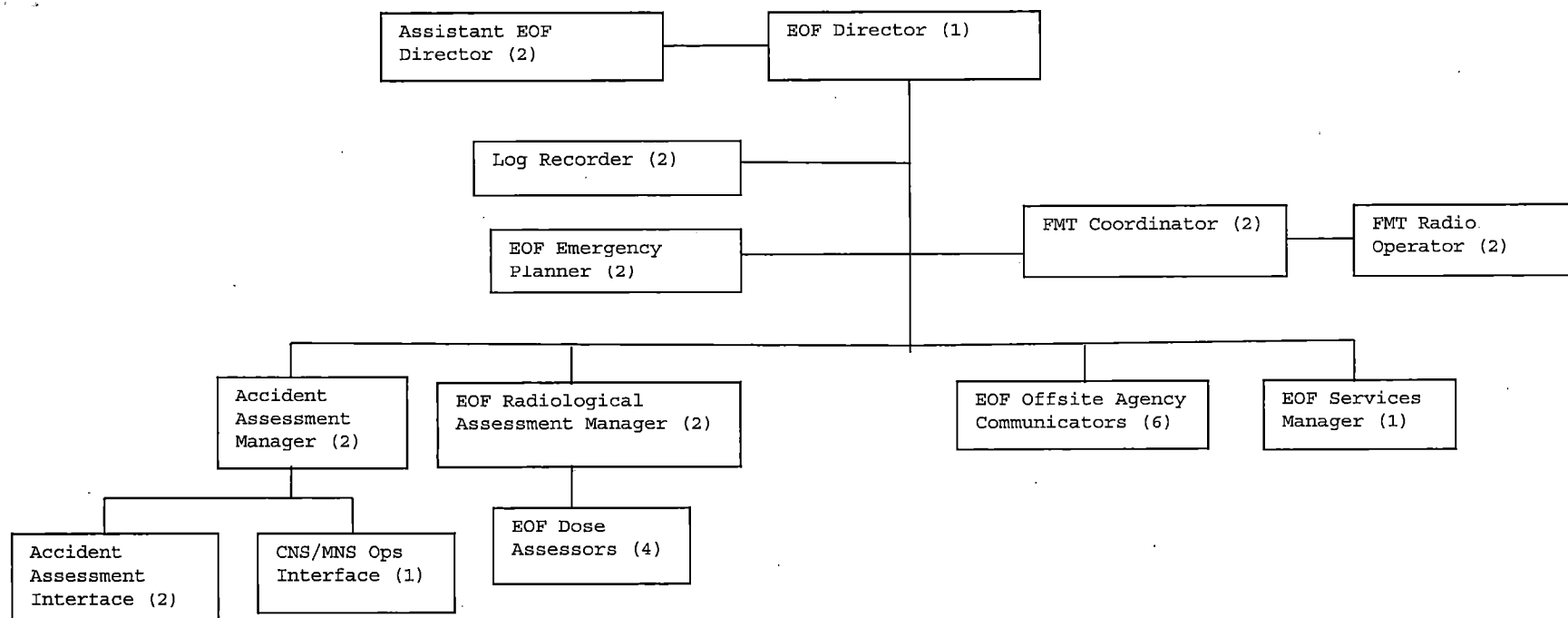
FIGURE B-10
OCONEE NUCLEAR STATION
ONSITE EMERGENCY RESPONSE DUTIES

RADIATION PROTECTION	CHEMISTRY	MAINTENANCE	OPERATIONS	WORK CONTROL	BUSINESS GROUP
Onsite Monitoring	Post-accident liquid sampling	Repair/calibration of electrical and mechanical equipment	Plant Operations	OSC Coordination	Provide personnel for field monitoring teams
Initial dose assessment	Chemistry analysis	Staff OSC with onshift personnel	Accident assessment	Recovery implementation	
Decontamination		Augment OSC with additional personnel	Safe shut-down of reactor	Provide personnel for field monitoring teams	
Post-accident gaseous sampling			Liaison with OSC		
Dose Control			Fire brigade response		
Provide personnel for field monitoring teams			Initial Emergency Management		
Evacuation coordination			NRC Communications		
RP support for work tasks in the field			Fire Support		
			Tank Farm Operation		
			Radwaste Operation		

FIGURE B-10
OCONEE NUCLEAR STATION
ONSITE EMERGENCY RESPONSE DUTIES

Organizational Effectiveness	ENGINEERING	SECURITY	SAFETY	NUCLEAR SUPPLY CHAIN SITE SERVICES GROUP
	TSC LOG	ACCESS & CONTROL		COMMUNICATIONS EQUIPMENT
OFF SITE COMMUNICATIONS	TSC/OSC LIAISON TECHNICAL ASSISTANT	EVACUATION COORDINATION		SUPPLY/PARTS
ASSIST WITH ACCOUNTABILITY REPORTING	ENGINEERING SUPPORT	MEDICAL (MERT)	PERSONNEL SAFETY	HEAVY EQUIPMENT OPERATORS
ASSIST WITH EVACUATION	LIAISON WITH CORPORATE ACCIDENT ASSESSMENT GROUP			COMMISSARY
EMERGENCY PLANNING	TSC STATUS BOARDS			

FIGURE B-11
OCONEE NUCLEAR STATION
Common EOF - Multi-Site Event Staffing



1. Notification Devices activated for second unit - all call response
2. Assistant EOF Director assumes responsibility as lead manager for designated Site
3. Additional Log Keeper retained to support 2nd Site
4. Additional Accident Assessment Manager retained to support 2nd Site
5. Additional Dose Assessor retained to support 2nd Site
6. Additional FMT Coordinator retained to support 2nd Site
7. Additional FMT Radio Operator retained to support 2nd Site
8. Four additional Offsite Communicators as needed to support both Sites
9. Additional Emergency Planner as needed to support 2nd Site
10. Additional Radiological Assessment Manager as needed to support 2nd Site
11. Additional Assistant EOF Director as needed to support 2nd Site
12. Oconee Ops Interface position is staffed in the ONS TSC
13. Additional Accident Assessment Interface as needed to support 2nd Site

F. EMERGENCY COMMUNICATIONS

Provisions exist for prompt communications among principal response organizations, emergency personnel, and to the public.

F.1 Emergency Response Organization

The Emergency Response Organization has been developed in such a manner to list primary and alternate personnel. Primary and backup means of communication have been established between the Site, local government agencies, and State response organizations (Figure F-1).

F.1.a Calls to activate State/County agency's emergency function are the responsibility of the Shift Manager/Emergency Coordinator. These calls are made by:

1. Duke Emergency Management Network (DEMNET).
2. The site telephone system to a 24-hour emergency number.

Some agencies have numbers for designated work schedules. Numbers can be found in the Emergency Telephone Directory.

A back-up radio system provides alternate communications with Oconee and Pickens Counties emergency response organizations. (Figure F-2)

F.1.b On a monthly basis, a communication check is made to state and local government warning points within the Emergency Planning Zone. Communications during an emergency situation would be by DEMNET, site telephone system/commercial phone service, or by radio (where appropriate).

F.1.c The EOF organization has the responsibility to ask for federal response. However, communication with the Nuclear Regulatory Commission from the emergency response facilities, would be by use of the Emergency Telecommunication System (ETS) located in the Control Room areas, Technical Support Center, or the Emergency Operations Facility.

F. EMERGENCY COMMUNICATIONS

F.1.d The Emergency Response Organization has the following communications systems available for use during emergencies:

- 1) Oconee Nuclear Station Telephone System
(Generator backed and battery backed)

Fiber-Optic to Charlotte GO (65 lines)

Telephone line to Easley (6 circuits)

Anderson (4 lines)

Six-Mile (4 lines)

Site Telephone System - Inward and outward direct dial available from the Control Room, TSC, and OSC

- 2) Commercial phone service does not go through the site telephone system

- 3) Duke Emergency Management Network (DEMNET)

DEMNET is the primary means of communication with the offsite agencies. DEMNET uses digital voice manager technology and IP connectivity through either the internet or a dedicated satellite connection, resulting in redundant paths to ensure operability. DEMNET allows intercommunication among the EOF, TSC, control room, counties, and states.

Oconee County

Pickens County

State Warning Point

State Emergency Operations Center (Columbia)

Emergency Operations Facility (Charlotte)

Technical Support Center

Control Rooms 1&2,

Alternate TSC/OSC (OOB)

Alternate Reporting Location (Issaqueena Trail)

- 4) Emergency Radio System (Offsite System-Battery Backed)

Control Room Units 1&2 (48.5 MHZ)

Technical Support Center

Field Monitoring Teams (800 MHZ)

Pickens County (48.5 MHZ)

Oconee County (48.5 MHZ)

State of South Carolina

F. EMERGENCY COMMUNICATIONS

- 5) Radio Systems (Onsite) (Emergency Back-up Power by Keowee Hydro Units)

Control Room 1&2, 3
Fire Brigade
Chemistry
Safety
Radiation Protection
Maintenance
Medical Emergency Response Team
Hazardous Materials Response Team

- 6) Security Radio System (Emergency Back-up Power by Standby Shutdown Facility)

CAS/SAS
All Security Guards
Oconee County LEC
Control Room 1&2, 3

- 7) Public Address (PA) System

Oconee Nuclear Station (Protected Area)
Oconee Office Building
Oconee Administration Building
Oconee Complex
Oconee Maint. Training Facility (Unique Page Number)
Oconee Garage (Unique Page Number)
Oconee Training Facility (Unique Page Number)
Keowee Hydro Station (Unique Page Number)
World of Energy

- 8) Site Assembly Warning System

Paging by Control Room
Warble Tone over PA
Siren Assembly Horn (Outside Warning)

F. EMERGENCY COMMUNICATIONS

9) EOF Communication System (Energy Center has back-up generator power)

The emergency communications systems at the Charlotte EOF are designed to ensure the reliable, timely flow of information between all parties having an emergency response role. The DEMNET is the primary means of communicating changes in event classification and protective action recommendations to the state and counties. The Decision Line provides the state and counties with a dedicated line to discuss and coordinate protective action recommendations. Existing commercial telephone service will serve as the designated backup means for communications in the event of a DEMNET/Decision Line failure.

Duke Telephone System (battery backed)

DEMNET (for state/county notifications)

Decision Line (for discussions/coordination of PARs)

Commercial telephones from the Charlotte switch network

Radio System to communicate with the Field Monitoring Teams

NRC Emergency Telecommunications System phones

Satellite Telephone

F.1.e Recall of Emergency Response Organization

Activation of the ERO is at the discretion of the SM/EC for an Unusual Event.

Activation of the ERO is required at an Alert or higher. Should an emergency occur that will require activation of the Emergency Response Organization, the Shift Manager will require the following actions to occur:

Normal Working Hours (Figure A-2A)

1. Have announced over the Public Address system that the Emergency Response Organization (Technical Support Center and Operational Support Center) are to be staffed.
2. Security will activate the ERO. If security is unable to activate the ERO, the SM (or designee) will activate the ERO.
3. Notify Duty Operations Engineer who verifies Plant Manager and Superintendent of Operations have been notified.
4. Initiate a Site Assembly (Required at an Alert or higher).
5. Individual groups will contact corporate personnel for support.

EMERGENCY COMMUNICATIONS

Weekends, Holidays, Backshift (Figure A-2B)

1. Security will activate the ERO. If security is unable to activate the ERO, the SM (or designee) will activate the ERO.
2. Duty Operations Engineer who verifies Plant Manager and Superintendent of Operations have been notified.
3. Announce over the PA system that the Emergency Response Organization (Technical Support Center and Operational Support Center) is to be activated.
4. Initiate a Site Assembly (Required at an Alert or higher).
5. Individual groups will contact corporate personnel for support.

F.1.f Redundant two way communication exists for communication with the Nuclear Regulatory Commission. The ETS system, the regular site or EOF telephone system exists for the communication link with NRC. (Figure F-1)

F.2 Medical Support Communication Link

Operations and/or Security will utilize the public address system and radio pager system to activate the Medical Emergency Response Team to respond to a medical emergency to assess the situation and render first aid. If an ambulance is needed, Operations and/or Security will call for an ambulance to be dispatched from the Oconee Memorial Hospital by one of several ways:

1. Regular ONS switchboard line
2. Outside line (Commercial Phone Service)
3. DEMNET to Oconee County who then would contact Oconee Memorial Hospital. (Operations only)
4. Radio in the Control Room and/or CAS/SAS to Oconee County, who then would contact the Oconee Memorial Hospital.

EMERGENCY COMMUNICATIONS

However, should an emergency at the Oconee Nuclear Station cause the Emergency Response Organization to be activated, personnel will staff the Operational Support Center who can respond to a medical emergency. Calls will be made from the Operational Support Center for additional medical assistance (i.e. ambulance transport and hospital contact).

F.3 Periodic Testing of the Emergency Communications System

Testing of the Emergency Communications System will be tested on a monthly and a quarterly basis in accordance with site procedures. Phones and radios will be checked to determine their availability.

FIGURE F-1

DUKE ENERGY COMPANY OCONEE NUCLEAR STATION

EMERGENCY COMMUNICATIONS SYSTEM

Organization	Commercial Phone Service Private Line	ONS Site Phone System	DEMNET	DPC Offsite Radio System	DPC Onsite Radio System	DPC Microwav. System	State LGR Radio System	Decision Line	ETS System	EOF Phone System
Control Room	x	x	x	x	x	x			x	x
Technical Support Center	x	x	x	x	x	x			x	x
Operational Support Center		x			x	x				x
Emergency Operations Facility	x		x	x		x		x	x	x
Pickens LEC	x	x	x	x				x		x
Pickens EOC	x	x	x	x			x	x		x
Oconee LEC	x	x	x	x				x		x
Oconee EOC	x	x	x				x	x		x
State EOC	x	x	x				x	x		x
State FEOC	x	x	x	x			x	x		x
NRC Headquarters	x	x							x	x
NRC Region II	x	x							x	x

FIGURE F-2

DUKE ENERGY COMPANY OCONEE NUCLEAR STATION

EMERGENCY RADIO NETWORK

The offsite emergency radio network at the Oconee Nuclear Station (ONS) is specifically limited to use in an emergency event. The network consists of two radio frequencies which provide the following services:

- A. 48.5 MHZ
 - “ Backup communications between ONS, Pickens County Emergency Preparedness Agency and Oconee County Emergency Preparedness Agency.
 - “ Operating instructions are shown in the Emergency Telephone Directory and AD-EP-ALL-0203 (Protocol for the Field Monitoring Coordinator During Emergency Conditions)
- B. 800 MHZ
 - “ Provide communications between Field Monitoring Team Coordinator and field teams.
 - “ Base station radios are located in the TSC and Alternate TSC
 - “ Operating instructions are located in AD-EP-ALL-0203 (Protocol for the Field Monitoring Coordinator During Emergency Conditions)

FIGURE P1

EMERGENCY PLAN IMPLEMENTING PROCEDURES

P. Responsibility for the Planning Effort: Development, Periodic Review and Distribution of the Emergency Plans

To assure that responsibilities for plan development, review and distribution of emergency plans are established and that planners are properly trained:

P.1 Training for Emergency Preparedness Personnel

Training for emergency preparedness personnel shall be provided in the form of workshop/seminar sessions on an annual basis. Courses developed by the Duke Training Center are also available in technically related subjects that will enhance the working knowledge of these people.

P.2 & P.3 Overall Authority

The Site Vice-President has the overall authority and responsibility for all hazards emergency response planning. The planning effort is delegated to the Manager, Emergency Preparedness.

The Manager of Emergency Preparedness at the Oconee Nuclear Site shall have the responsibility for the development, review and coordination of the site emergency plans with other response organizations and shall be responsible for conducting the biennial exercise, drills and training sessions to test the Oconee Nuclear Site Emergency Plan. This person is employed in the Safety Assurance Group.

P.4 & P.5 Review and Update of Emergency Plan

The ONS Emergency Plan shall be reviewed and updated annually. An in-depth review of the Emergency Plan will be made to determine if any/all changes have been made as a result of drills, exercises, commitments, audits, new regulatory requirements, and any other identified mechanism used to determine the appropriateness of the Emergency Plan. The Manager of Emergency Preparedness or designee is responsible for conducting the review and updating/revising the Emergency Plan and/or Implementing Procedures, as required. Once the review has been completed and changes made as determined, the Emergency Plan shall be certified as current.

Approved revisions of the Emergency Plan and Implementing Procedures shall be distributed according to Appendix 6, (Distribution of Emergency Plan and Implementing Procedures). Appendix 6 carries an itemized list of all organizations and individuals receiving copies of the Emergency Plan and Implementing Procedures. Revised pages of the Emergency Plan shall be dated and marked to show where changes have been made.

FIGURE P1

EMERGENCY PLAN IMPLEMENTING PROCEDURES

P.6 Supporting: Plans

Figure P-2 lists plans in support of the ONS Emergency Plan.

P.7 Implementing Procedures

Written procedures will be established, implemented and maintained covering the activities associated with emergency plan implementation. Each procedure and changes thereto, shall be approved by the responsible manager prior to implementation.

Implementing procedures are indexed and cross referenced to the section applicable in NUREG 0654. (Figure P-1)

P.8 Table of Contents

The Oconee Nuclear Site Emergency Plan and Implementing Procedures contain a table of contents and an index tab system.

P.9 Independent Audit

The NOS Audit Manager will arrange for an independent review of Oconee Nuclear Station's Emergency Preparedness Program as necessary, based on an assessment against performance indicators, and as soon as reasonably practicable after a change occurs in personnel, procedures, equipment, or facilities that potentially could adversely affect emergency preparedness, but no longer than 12 months after the change. In any case, all elements of the emergency preparedness program will be reviewed at least once every 24 months. Guidance for performing the assessment against the performance indicators is provided in the Emergency Preparedness Administrative Procedure AD-EP-ALL-0001. The independent review will be conducted by the Independent Nuclear Oversight Division, which will include the following plans, procedures, training programs, drills/exercises, equipment, and State/local government interfaces:

1. Oconee Nuclear Station Emergency Plan
2. Oconee Nuclear Station Emergency Plan Implementing Procedures
3. State/Local Support Agency Training Program
4. Site Emergency Response Training Program
5. Public & Media Training/Awareness
6. Equipment: Communications, Monitoring, Meteorological, Public Alerting
7. State/Local Plan Interface

The review findings will be submitted to the appropriate corporate and nuclear site management. The part of the review involving the evaluation of the adequacy of

FIGURE P1

EMERGENCY PLAN IMPLEMENTING PROCEDURES

interface with State and local governments will be reported to the appropriate State and local governments. Corporate or nuclear site management, as appropriate, will evaluate the findings affecting their area of responsibility and ensure effective corrective actions are taken. The results of the review, along with recommendations for improvements, will be documented, and retained for a period of five (5) years.

P.10 Phone Number Update

The Emergency Telephone Directory is updated quarterly.

FIGURE P1

EMERGENCY PLAN IMPLEMENTING PROCEDURES

Cross Reference			
Emergency Plan Section(s) Implemented	Procedure		Procedure Title
Assignment of Responsibility			
A1a	ONS E Plan		ONS Emergency Plan, Appendix 5 Agreement Letters
A1b	RP/0/A/1000/002		Control Room Emergency Coordinator Procedure
	RP/0/A/1000/019		Technical Support Center Emergency Coordinator Procedure
	RP/0/A/1000/025		Operational Support Center Manager Procedure
	AD-EP-ALL-0107		Standard Procedure for EOF Services
	SR/0/A/2000/003		Activation of the Emergency Operations Facility
A1c	ONS E Plan		ONS Emergency Plan, Fig A1
A1d	RP/0/A/1000/002		Control Room Emergency Coordinator Procedure
	SR/0/A/2000/003		Activation of the Emergency Operations Facility
A1e	RP/0/A/1000/002		Control Room Emergency Coordinator Procedure
A2a	NA		State/County Responsibility
A2b	NA		State/County Responsibility
A3	ONS E Plan		ONS Emergency Plan, Appendix 5
A4	RP/0/A/1000/002		Control Room Emergency Coordinator Procedure
	RP/0/A/1000/019		Technical Support Center Emergency Coordinator Procedure
	RP/0/A/1000/025		Operational Support Center Manager Procedure
	SR/0/A/2000/003		Activation of the Emergency Operations Facility
On-Site Emergency Organization			
B1	ONS E Plan		ONS Emergency Plan
	NSD-117		Emergency Response Organization Staffing, Training, and Responsibilities
	RP/0/A/1000/002		Control Room Emergency Coordinator Procedure
	RP/0/A/1000/019		Technical Support Center Emergency Coordinator Procedure
	RP/0/A/1000/022		Procedure For Major Site Damage Assessment And Repair
	RP/0/A/1000/029		Fire Brigade Response
	AD-EP-ALL-0107		Standard Procedure for EOF Services
B2	RP/0/A/1000/002		Control Room Emergency Coordinator Procedure
	RP/0/A/1000/019		Technical Support Center Emergency Coordinator Procedure
	SR/0/A/2000/003		Activation of the Emergency Operations Facility
B3	RP/0/A/1000/002		Control Room Emergency Coordinator Procedure
	RP/0/A/1000/019		Technical Support Center Emergency Coordinator Procedure
	SR/0/A/2000/003		Activation of the Emergency Operations Facility
B3	NSD-117		Emergency Response Organization Staffing, Training,

FIGURE P1

EMERGENCY PLAN IMPLEMENTING PROCEDURES

Cross Reference		
Emergency Plan Section(s) Implemented	Procedure	Procedure Title
		and Responsibilities
B4	RP/0/A/1000/002	Control Room Emergency Coordinator Procedure
	RP/0/A/1000/019	Technical Support Center Emergency Coordinator Procedure
	SR/0/A/2000/003	Activation of the Emergency Operations Facility
	NSD-117	Emergency Response Organization Staffing, Training, and Responsibilities
B5	OMP 2-16	Shift Turnover
	NSD-117	Emergency Response Organization Staffing, Training, and Responsibilities
	RP/0/A/1000/019	Technical Support Center Emergency Coordinator Procedure
	RP/0/A/1000/025	Operational Support Center Manager Procedure
	SR/0/A/2000/003	Activation of the Emergency Operations Facility
B6	ONS E Plan	ONS Emergency Plan
	NSD-117	Emergency Response Organization Staffing, Training, and Responsibilities
	SR/0/A/2000/003	Activation of the Emergency Operations Facility
	AD-EP-ALL-0107	Standard Procedure for EOF Services
B7a-d	NSD-117	Emergency Response Organization Staffing, Training, and Responsibilities
	SR/0/A/2000/003	Activation of the Emergency Operations Facility
	AD-EP-ALL-0107	Standard Procedure for EOF Services
	RP/0/A/1000/027	Re-Entry Recovery Procedure
	RP/0/A/1000/031	Joint Information Center Emergency Response Plan
B8	ONS E Plan	ONS Emergency Plan, Appendix 5
B9	ONS E Plan	ONS Emergency Plan, Appendix 5
Emergency Response Support and Resources		
C1a, b, c	ONS E Plan	ONS Emergency Plan, Appendix 5
	SR/0/A/2000/003	Activation of the Emergency Operations Facility
	RP/0/A/1000/031	Joint Information Center Emergency Response Plan
	RP/0/A/1000/037	Incident Command Post (ICP) Operations and Radiation Protection Liaison Guidelines
C2a	NA	State/County Responsibility
C2b	EP FAM 3.11	State/County EOC Liaison Reference Manual
	RP/0/A/1000/037	Incident Command Post (ICP) Operations and Radiation Protection Liaison Guidelines
C3	HP/0/B/1009/026	Environmental Monitoring For Emergency Conditions
C4	ONS E Plan	ONS Emergency Plan, Appendix 5
	SR/0/A/2000/003	Activation of the Emergency Operations Facility
Emergency Classification System		

FIGURE P1

EMERGENCY PLAN IMPLEMENTING PROCEDURES

Cross Reference		
Emergency Plan Section(s) Implemented	Procedure	Procedure Title
D1a, b, c	ONS E Plan	ONS Emergency Plan
	RP/0/A/1000/001	Emergency Classification
D2	RP/0/A/1000/001	Emergency Classification
D3	NA	State/County Responsibility
D4	NA	State/County Responsibility
Notification Methods and Procedures		
E1	RP/0/A/1000/002	Control Room Emergency Coordinator Procedure
	RP/0/A/1000/015A	Offsite Communications From The Control Room
	RP/0/A/1000/015B	Offsite Communications From The Technical Support Center
	RP/0/A/1000/019	Technical Support Center Emergency Coordinator Procedure
	RP/0/A/1000/024	Protective Action Recommendations
	SR/0/A/2000/003	Activation of the Emergency Operations Facility
E2	RP/0/A/1000/002	Control Room Emergency Coordinator Procedure
E3	RP/0/A/1000/002	Control Room Emergency Coordinator Procedure
	RP/0/A/1000/015A	Offsite Communications From The Control Room
	RP/0/A/1000/015B	Offsite Communications From The Technical Support Center
	RP/0/A/1000/019	Technical Support Center Emergency Coordinator Procedure
	RP/0/A/1000/024	Protective Action Recommendations
	SR/0/A/2000/003	Activation of the Emergency Operations Facility
	SR/0/A/2000/004	Notification to States and Counties Facility for Catawba, McGuire, and Oconee
E4a-n	RP/0/A/1000/002	Control Room Emergency Coordinator Procedure
	RP/0/A/1000/015A	Offsite Communications From The Control Room
	RP/0/A/1000/015B	Offsite Communications From The Technical Support Center
	RP/0/A/1000/019	Technical Support Center Emergency Coordinator Procedure
	RP/0/A/1000/024	Protective Action Recommendations
	SR/0/A/2000/003	Activation of the Emergency Operations Facility
E5	NA	State/County Responsibility
E6	EP FAM 3.3	Alert and Notification System (Siren Program)
E7	RP/0/A/1000/024	Protective Action Recommendations
	SR/0/A/2000/003	Activation of the Emergency Operations Facility
E8	RP/0/A/1000/017	Spill Response
Emergency Communications		
F1a	RP/0/A/1000/002	Control Room Emergency Coordinator Procedure
F1a	RP/0/A/1000/015A	Offsite Communications From The Control Room
	RP/0/A/1000/015B	Offsite Communications From The Technical Support Center

FIGURE P1

EMERGENCY PLAN IMPLEMENTING PROCEDURES

Cross Reference		
Emergency Plan Section(s) Implemented	Procedure	Procedure Title
	RP/0/A/1000/019	Technical Support Center Emergency Coordinator Procedure
	SR/0/A/2000/003	Activation of the Emergency Operations Facility
F1b	PT/0/A/2000/002	Periodic Test of Emergency Response Communications Equipment
F1c	RP/0/A/1000/002	Control Room Emergency Coordinator Procedure
	RP/0/A/1000/015A	Offsite Communications From The Control Room
	RP/0/A/1000/015B	Offsite Communications From The Technical Support Center
	RP/0/A/1000/019	Technical Support Center Emergency Coordinator Procedure
	RP/0/A/1000/003A	ERDS Operation
	PT/0/A/2000/009	Emergency Response Data System Quarterly Test
	SR/0/A/2000/003	Activation of the Emergency Operations Facility
F1d	PT/0/A/2000/002	Periodic Test of Emergency Response Communications Equipment
	ST/0/A/4600/086	Standard Procedure For Periodic Verification of EOF Communication Equipment Operation and Equipment/ Supply Inventory-
	ST/0/A/4600/094	Standard Procedure For Periodic Test Of The EOF Selective Signaling, ENS and ETS
F1e	RP/0/A/1000/002	Control Room Emergency Coordinator Procedure
F1f	PT/0/A/2000/002	Periodic Test of Emergency Response Communications Equipment
	RP/0/A/1000/003 A	ERDS Operation
	PT/0/A/2000/009	Emergency Response Data System Quarterly Test
F2	PT/0/A/2000/002	Periodic Test of Emergency Response Communications Equipment
	RP/0/A/1000/016	MERT Activation Procedure For Medical, Confined Space, and High Angle Rescue Emergencies
	RP/0/A/1000/025	Operational Support Center Manager Procedure
F3	PT/0/A/2000/002	Periodic Test of Emergency Response Communications Equipment
	PT/0/A/2000/009	Emergency Response Data System Quarterly Test
Public Education and Information		
G1a,b,c	EP FAM 3.6	Alert and Notification System – Oconee Specific Supplement
	NPM Chapter 15	Corporate Communications Departmental Interface Agreement
G2	EP FAM 3.6	Alert and Notification System – Oconee Specific Supplement
	NPM Chapter 15	Corporate Communications Departmental Interface Agreement
G3a, b	RP/0/A/1000/028	Nuclear Communications Emergency Response

FIGURE P1

EMERGENCY PLAN IMPLEMENTING PROCEDURES

		Cross Reference
Emergency Plan Section(s) Implemented	Procedure	Procedure Title
		Plan
	RP/0/A/1000/031	Joint Information Center Emergency Response Plan
	SR/0/A/2000/001	Standard Procedure For Corporate Communications Response To The Emergency Operations Facility
G4a, b, c	RP/0/A/1000/028	Nuclear Communications Emergency Response Plan
	RP/0/A/1000/031	Joint Information Center Emergency Response Plan
	SR/0/A/2000/001	Standard Procedure For Corporate Communications Response To The Emergency Operations Facility
G5	NPM Chapter 15	Corporate Communications Departmental Interface Agreement
Emergency Facilities and Equipment		
H1a, b, c	RP/0/A/1000/019	Technical Support Center Emergency Coordinator Procedure
	RP/0/A/1000/025	Operational Support Center Manager Procedure
	HP/0/B/1009/001	Emergency Equipment Inventory and Instrument Check
	PT/0/A/2000/002	Periodic Test of Emergency Response Communications Equipment
	PT/0/A/2000/008	Procedure to Verify the Availability of Supplies and Equipment in the Emergency Response Facilities
	PT/0/A/2000/010	Review of Emergency Plan and Implementing Procedures
H2	SR/0/A/2000/003	Activation of the Emergency Operations Facility
	ST/0/A/4600/086	Standard Procedure For Periodic Verification of EOF Communication Equipment Operation and Equipment/Supply Inventory
	ST/0/A/4600/094	Standard Procedure For Periodic Test Of The EOF Selective Signaling, ENS and ETS
H3	NA	State/County Responsibility
H4	NSD-117	Emergency Response Organization Staffing, Training, and Responsibilities
	RP/0/A/1000/002	Control Room Emergency Coordinator Procedure
H4	RP/0/A/1000/019	Technical Support Center Emergency Coordinator Procedure
	RP/0/A/1000/025	Operational Support Center Manager Procedure
	RP/0/A/1000/031	Joint Information Center Emergency Response Plan
	SR/0/A/2000/003	Activation of the Emergency Operations Facility
	SR/0/A/2000/001	Standard Procedure For Corporate Communications

FIGURE P1

EMERGENCY PLAN IMPLEMENTING PROCEDURES

Emergency Plan Section(s) Implemented	Cross Reference	
	Procedure	Procedure Title
		Response To The Emergency Operations Facility
	AD-EP-ALL-0107	Standard Procedure for EOF Services
H5	RP/0/A/1000/001	Emergency Classification
H5a, b, c, d	ONS E Plan	ONS Emergency Plan
	IP/0/B/1601/003	Meteorological Equipment Checks
H6a, b, c	ONS E Plan	ONS Emergency Plan
	IP/0/B/1601/003	Meteorological Equipment Checks
	ONS ODCM	ONS Offsite Dose Calculation Manual
	HP/0/B/1009/001	Emergency Equipment Inventory and Instrument Check
	HP/0/B/1009/023	Radiation Protection Emergency Response
	PT/0/A/2000/008	Procedure to Verify the Availability of Supplies and Equipment in the Emergency Response Facilities
	ST/0/A/4600/086	Standard Procedure For Periodic Verification of EOF Communication Equipment Operation and Equipment/Supply Inventory
	PT/0/B/0250/030	Quarterly Fire Brigade Equipment Inspection
	PT/0/B/0250/032	Quarterly Inspection Of Emergency Medical Equipment
	PT/0/B/0250/045	Quarterly Inspection Of Hazardous Materials Response Team Equipment
	CP/0/B/2001/008	Chemistry Safety Equipment And Spill Control Response
	RP/0/A/1000/017	Spill Response
H7	HP/0/B/1009/001	Emergency Equipment Inventory and Instrument Check
	HP/0/B/1009/023	Radiation Protection Emergency Response
H8	ONS E Plan	ONS Emergency Plan
	IP/0/B/1601/003	Meteorological Equipment Checks
	AD-EP-ALL-0202	Emergency Response Offsite Dose Assessment
	RP/0/A/1000/024	Protective Action Recommendations
H9	ONS E Plan	ONS Emergency Plan
	IP/0/B/1601/003	Meteorological Equipment Checks
	ONS ODCM	ONS Offsite Dose Calculation Manual
	HP/0/B/1009/001	Emergency Equipment Inventory and Instrument Check
H9	PT/0/A/2000/008	Procedure to Verify the Availability of Supplies and Equipment in the Emergency Response Facilities
	ST/0/A/4600/086	Standard Procedure For Periodic Verification of EOF Communication Equipment Operation and Equipment/Supply Inventory
	PT/0/B/0250/030	Quarterly Fire Brigade Equipment Inspection
	PT/0/B/0250/032	Quarterly Inspection Of Emergency Medical

FIGURE P1

EMERGENCY PLAN IMPLEMENTING PROCEDURES

Cross Reference		
Emergency Plan Section(s) Implemented	Procedure	Procedure Title
		Equipment
	PT/0/B/0250/045	Quarterly Inspection Of Hazardous Materials Response Team Equipment
	CP/0/B/2001/008	Chemistry Safety Equipment And Spill Control Response
	RP/0/A/1000/025	Operational Support Center Manager Procedure
H10	ONS E Plan	ONS Emergency Plan
	IP/0/B/1601/003	Meteorological Equipment Checks
	ONS ODCM	ONS Offsite Dose Calculation Manual
	HP/0/B/1009/001	Emergency Equipment Inventory and Instrument Check
	PT/0/A/2000/008	Procedure to Verify the Availability of Supplies and Equipment in the Emergency Response Facilities
	ST/0/A/4600/086	Standard Procedure For Periodic Verification of EOF Communication Equipment Operation and Equipment/Supply Inventory
	PT/0/B/0250/030	Quarterly Fire Brigade Equipment Inspection
	PT/0/B/0250/032	Quarterly Inspection Of Emergency Medical Equipment
	PT/0/B/0250/045	Quarterly Inspection Of Hazardous Materials Response Team Equipment
	CP/0/B/2001/008	Chemistry Safety Equipment And Spill Control Response
H11	ONS E Plan	ONS Emergency Plan, Section H.11
H12	HP/0/B/1009/023	Radiation Protection Emergency Response
	AD-EP-ALL-0203	Protocol for the Field Monitoring Coordinator During Emergency Conditions
	SR/0/A/2000/003	Activation of the Emergency Operations Facility
Accident Assessment		
I1	ONS E Plan	ONS Emergency Plan, Section D
	RP/0/A/1000/001	Emergency Classification
I2	ONS E Plan	ONS Emergency Plan
	RP/0/A/1000/018	Core Damage Assessment
	CSM 5.1	Emergency Response Guidelines
I2	CSM 5.2	Procedure Use Guidelines During Emergency Response
	CP/1/A/2002/002	Rheodyne Sample Via Post Accident Liquid Sampling System (PALSS)
	CP/2/A/2002/002	Rheodyne Sample Via Post Accident Liquid Sampling System (PALSS)
	CP/3/A/2002/002	Rheodyne Sample Via Post Accident Liquid Sampling System (PALSS)
	HP/0/B/1009/009	Procedure For Determining The Inplant

FIGURE P1

EMERGENCY PLAN IMPLEMENTING PROCEDURES

Emergency Plan Section(s) Implemented	Procedure	Cross Reference
		Procedure Title
		Radioiodine Concentration During Accident Conditions
	HP/0/B/1009/015	Procedure For Sampling And Quantifying High Level Gaseous, Radioiodine And Particulate Radioactivity
	HP/0/B/1009/026	Environmental Monitoring For Emergency Conditions
	AD-EP-ALL-0202	Emergency Response Offsite Dose Assessment
	AD-EP-ALL-0203	Protocol for the Field Monitoring Coordinator During Emergency Conditions
I3a, b	RP/0/A/1000/001	Emergency Classification
	RP/0/A/1000/024	Protective Action Recommendations
	HP/0/B/1009/022	On-Shift Off-Site Dose Projections
	ONS ODCM	ONS Offsite Dose Calculation Manual
	AD-EP-ALL-0202	Emergency Response Offsite Dose Assessment
I4	HP/0/B/1009/018	Off-Site Dose Projections
	HP/0/B/1009/022	On-Shift Off-Site Dose Projections
	AD-EP-ALL-0202	Emergency Response Offsite Dose Assessment
I5	RP/0/A/1000/002	Control Room Emergency Coordinator Procedure
	RP/0/A/1000/003 A	ERDS Operation
	RP/0/A/1000/015 A	Offsite Communications From The Control Room
	RP/0/A/1000/015 B	Offsite Communications From The Technical Support Center
	RP/0/A/1000/019	Technical Support Center Emergency Coordinator Procedure
	SR/0/A/2000/003	Activation of the Emergency Operations Facility
	SR/0/A/2000/004	Notification to States and Counties from the Emergency Operations Facility for Catawba, McGuire, and Oconee
16	AD-EP-ALL-0202	Emergency Response Offsite Dose Assessment
I7	SR/0/A/2000/003	Activation of the Emergency Operations Facility
I7	AD-EP-ALL-0203	Protocol for the Field Monitoring Coordinator During Emergency Conditions
	HP/0/B/1009/026	Environmental Monitoring For Emergency Conditions
I8	SR/0/A/2000/003	Activation of the Emergency Operations Facility
	AD-EP-ALL-0203	Protocol for the Field Monitoring Coordinator During Emergency Conditions
	HP/0/B/1009/026	Environmental Monitoring For Emergency Conditions
I9	HP/0/B/1009/026	Environmental Monitoring For Emergency Conditions

FIGURE P1

EMERGENCY PLAN IMPLEMENTING PROCEDURES

Emergency Plan Section(s) Implemented	Procedure	Cross Reference
		Procedure Title
	AD-EP-ALL-0203	Protocol for the Field Monitoring Coordinator During Emergency Conditions
I10	AD-EP-ALL-0202	Emergency Response Offsite Dose Assessment
	HP/0/B/1009/020	Estimating Food Chain Doses Under Post-Accident Conditions
	HP/0/B/1009/026	Environmental Monitoring For Emergency Conditions
I11	NA	State/County Responsibility
Protective Response		
J1	AP/0/A/1700/045	Site Security Threats
	RP/0/A/1000/009	Procedure For Site Assembly
	RP/0/A/1000/010	Procedure For Emergency Evacuation/Relocation Of Site Personnel
J2	NSD-114	Site Assembly/Site Evacuation
	HP/0/B/1009/016	Procedure For Emergency Decontamination Of Personnel And Vehicles On-Site And From Off-Site Remote Assembly Areas
	RP/0/A/1000/010	Procedure For Emergency Evacuation/Relocation Of Site Personnel
	AD-EP-ALL-0202	Emergency Response Offsite Dose Assessment
J3	NSD-114	Site Assembly/Site Evacuation
	AP/0/A/1700/045	Site Security Threats
	HP/0/B/1009/018	Off-Site Dose Projections
	RP/0/A/1000/009	Procedure For Site Assembly
	RP/0/A/1000/010	Procedure For Emergency Evacuation/Relocation Of Site Personnel
	AD-EP-ALL-0202	Emergency Response Offsite Dose Assessment
J4	HP/0/B/1009/016	Procedure For Emergency Decontamination Of Personnel And Vehicles On-Site And From Off-Site Remote Assembly Areas
	AD-EP-ALL-0202	Emergency Response Offsite Dose Assessment
	RP/0/A/1000/009	Procedure For Site Assembly
J4	RP/0/A/1000/010	Procedure For Emergency Evacuation/Relocation Of Site Personnel
J5/J6	NSD-114	Site Assembly/Site Evacuation
	AP/0/A/1700/045	Site Security Threats
	HP/0/B/1009/009	Procedure For Determining The Inplant Airborne Radioiodine Concentration During Accident Conditions
	RP/0/A/1000/009	Procedure For Site Assembly
	AD-EP-ALL-0204	Distribution of Potassium Iodide Tablets in the Event of a Radioiodine Release
	RPM	Radiation Protection Manual
J7	RP/0/A/1000/024	Protective Action Recommendations
	SR/0/A/2000/003	Activation of the Emergency Operations Facility

FIGURE P1

EMERGENCY PLAN IMPLEMENTING PROCEDURES

Cross Reference		
Emergency Plan Section(s) Implemented	Procedure	Procedure Title
J8	ONS-ETE-12142012	ONS Evacuation Time Estimates (ETE) Dated 12/14/2012
J9	NA	State/County Responsibility
	AP/0/A/1700/045	Site Security Threats
	RP/0/A/1000/009	Procedure For Site Assembly
	RP/0/A/1000/010	Procedure For Emergency Evacuation/Relocation Of Site Personnel
J10a, b, c	ONS E Plan	ONS Emergency Plan
	RPM	Radiation Protection Manual
J10d - l	NA	State/County Responsibility
J10m	RP/0/A/1000/024	Protective Action Recommendations
	SR/0/A/2000/003	Activation of the Emergency Operations Facility
J11	NA	State/County Responsibility
J12	NA	State/County Responsibility
Radiological Exposure Control		
K1a - g	RP/0/B/1000/011	Planned Emergency Exposure
	AD-EP-ALL-0204	Distribution of Potassium Iodide Tablets in the Event of a Radioiodine Release
K2	RP/0/B/1000/011	Planned Emergency Exposure
K3a	RPM	Radiation Protection Manual
K3a	HP/0/B/1009/001	Emergency Equipment Inventory and Instrument Check
	HP/0/B/1009/023	Radiation Protection Emergency Response
K3b	RPM	Radiation Protection Manual
	HP/0/B/1009/023	Radiation Protection Emergency Response
K4	NA	State/County Responsibility
K5a, b,	RPM	Radiation Protection Manual
K5a, b,	HP/0/B/1009/016	Procedure For Emergency Decontamination Of Personnel And Vehicles On-Site And From Off-Site Remote Assembly Areas
	HP/0/B/1009/024	Radiation Protection Response To A Medical Emergency
K6a, b, c	RPM	Radiation Protection Manual
	HP/0/B/1009/016	Procedure For Emergency Decontamination Of Personnel And Vehicles On-Site And From Off-Site Remote Assembly Areas
K7	HP/0/B/1009/001	Emergency Equipment Inventory and Instrument Check
	HP/0/B/1009/016	Procedure For Emergency Decontamination Of Personnel And Vehicles On-Site And From Off-Site Remote Assembly Areas
Medical and Public Health Support		
L1	ONS E Plan	ONS Emergency Plan, Appendix 5

FIGURE P1

EMERGENCY PLAN IMPLEMENTING PROCEDURES

Cross Reference		
Emergency Plan Section(s) Implemented	Procedure	Procedure Title
	HP/0/B/1009/001	Emergency Equipment Inventory and Instrument Check
L2	RP/0/A/1000/016	MERT Activation Procedure For Medical, Confined Space, and High Angle Rescue Emergencies
	HP/0/B/1009/001	Emergency Equipment Inventory and Instrument Check
	HP/0/B/1009/024	Radiation Protection Response To A Medical Emergency
	PT/0/B/0250/032	Quarterly Inspection Of Emergency Medical Equipment
L3	NA	State/County Responsibility
L4	ONS E Plan	ONS Emergency Plan, Appendix 5
	RP/0/A/1000/016	MERT Activation Procedure For Medical, Confined Space, and High Angle Rescue Emergencies
	HP/0/B/1009/001	Emergency Equipment Inventory and Instrument Check
	HP/0/B/1009/024	Radiation Protection Response To A Medical Emergency
Recovery and Reentry Planning and Post Accident Operations		
M1	RP/0/A/1000/024	Protective Action Recommendations
	RP/0/A/1000/027	Re-Entry Recovery Procedure
	RP/0/A/1000/028	Nuclear Communications Emergency Response Plan
M2	ONS E Plan	ONS Emergency Plan, Section M
	RP/0/A/1000/027	Re-Entry Recovery Procedure
	RP/0/A/1000/028	Nuclear Communications Emergency Response Plan
M3	RP/0/A/1000/019	Technical Support Center Emergency Coordinator Procedure
	RP/0/A/1000/025	Operational Support Center Manager Procedure
	RP/0/A/1000/027	Re-Entry Recovery Procedure
	SR/0/A/2000/003	Activation of the Emergency Operations Facility
	RP/0/A/1000/031	Joint Information Center Emergency Response Plan
	AD-EN-ALL-0200	Spill Response .
M4	RP/0/A/1000/027	Re-Entry Recovery Procedure
Exercises and Drills		
N1a, b	AD-EP-ALL-0801	Design and Development of Drills and Exercises
	AD-EP-ALL-0802	Conducting Drills and Exercises
	AD-EP-ALL-0803	Evaluation and Critique of Drills and Exercises
N2, c, d, e, f, g, h, i	AD-EP-ALL-0801	Design and Development of Drills and Exercises
	AD-EP-ALL-0802	Conducting Drills and Exercises
	AD-EP-ALL-0803	Evaluation and Critique of Drills and Exercises

FIGURE P1

EMERGENCY PLAN IMPLEMENTING PROCEDURES

Cross Reference		
Emergency Plan Section(s) Implemented	Procedure	Procedure Title
N2a	PT/0/A/2000/002	Periodic Test of Emergency Response Communications Equipment
	ST/0/A/4600/086	Standard Procedure For Periodic Verification of EOF Communication Equipment Operation and Equipment/Supply Inventory
	ST/0/A/4600/094	Standard Procedure For Periodic Test Of The EOF Selective Signaling, ENS and ETS
N2b	PT/0/B/2000/050	Fire Drill - Performance and Evaluation
N3	AD-EP-ALL-0801	Design and Development of Drills and Exercises
	AD-EP-ALL-0802	Conducting Drills and Exercises
	AD-EP-ALL-0803	Evaluation and Critique of Drills and Exercises
N4a, b	AD-EP-ALL-0801	Design and Development of Drills and Exercises
	AD-EP-ALL-0802	Conducting Drills and Exercises
	AD-EP-ALL-0803	Evaluation and Critique of Drills and Exercises
N5	AD-EP-ALL-1000	Conduct Of Emergency Preparedness
	AD-EP-ALL-0801	Design and Development of Drills and Exercises
	AD-EP-ALL-0802	Conducting Drills and Exercises
	AD-EP-ALL-0803	Evaluation and Critique of Drills and Exercises
Radiological Emergency Response Training		
O1	NSD-117	Emergency Response Organization Staffing, Training, and Responsibilities
	ERTG-001	Emergency Response Organization and Emergency Services Training Program
	ETQS 7111.0	Emergency Response Training
O2	NSD-117	Emergency Response Organization Staffing, Training, and Responsibilities
O2	ERTG-001	Emergency Response Organization and Emergency Services Training Program
	ETQS 7111.0	Emergency Response Training
O3	NSD-119	Medical Emergency Response Team (MERT) Program Organization, Training, and Responsibilities
	ERTG-001	Emergency Response Organization and Emergency Services Training Program
O4.1, .2	NSD-117	Emergency Response Organization Staffing, Training, and Responsibilities
	ERTG-001	Emergency Response Organization and Emergency Services Training Program
	ETQS 7111.0	Emergency Response Training
O4.3	ETQS 3104.0	Radiation Protection Training and Qualifications
	ETQS 7104.0	Radiation Protection Staff Professional Development Program
O4.4	ETQS 7111.0	Emergency Response Training
O4.5, .7	NSD-119	Medical Emergency Response Team (MERT) Program Organization, Training, and Responsibilities

FIGURE P1

EMERGENCY PLAN IMPLEMENTING PROCEDURES

Cross Reference

Emergency Plan Section(s) Implemented	Procedure	Procedure Title
O4.6	ETQS 7111.0	Emergency Response Training
O4.8	ETQS 7111.0	Emergency Response Training
O4.9	ETQS 7111.0	Emergency Response Training
O4.10	OCI507-N	Appendix R Training
	OC6792-N	Maint SPOC Team Emergency Response Training
	TTC 471-N	Annual ERO Refresher /Update
O4.11	ERTG-001	Emergency Response Organization and Emergency Services Training Program
O5	ERTG-001	Emergency Response Organization and Emergency Services Training Program
Responsibility for the Planning Effort: Development, Periodic Review and Distribution of Emergency Plans		
P1	AD-EP-ALL-0501	Emergency Planner Staff Training and Qualification
P2 & P3	ONS E Plan	ONS Emergency Plan
P4 & P5	PT/0/A/2000/010	Review of Emergency Plan and Implementing Procedures
	AD-EP-ALL-1000	Conduct Of Emergency Preparedness
P6	ONS E Plan	ONS Emergency Plan
P7	ONS E Plan	ONS Emergency Plan
P8	ONS E Plan	ONS Emergency Plan
P9	AD-EP-ALL-0001	Emergency Preparedness Key Performance Indicators

FIGURE P1

EMERGENCY PLAN IMPLEMENTING PROCEDURES

Cross Reference

Appendices

Appendix 1	Definitions
Appendix 2	Meteorology and Offsite Dose Assessment Program
Appendix 3	Alert and Notification System Description
Appendix 4	Evacuation Time Estimates
Appendix 5	Letters of Agreement
Appendix 6	Distribution List
Appendix 7	Emergency Data Transmittal System
Appendix 8	Spill Prevention Control and Countermeasure Plan ONS Pollution Prevention Plan Rev 11Site Drawing
Appendix 9	ONS Chemical Treatment Ponds 1,2 and 3 Groundwater Monitoring Sampling and Analysis Plan
Appendix 10	Hazardous Materials Response Plan

FIGURE P1

EMERGENCY PLAN IMPLEMENTING PROCEDURES

FIGURE P-2

**DUKE ENERGY
OCONEE NUCLEAR SITE**

SUPPORTING PLANS

State of South Carolina

Oconee County

Pickens County

DOE-IRAP Plan

INPO-Fixed Facility Agreement

NRC Region II

APPENDIX 9

Oconee Nuclear Station Chemical Treatment Ponds 1, 2 and 3 Groundwater Monitoring Sampling And Analysis Plan

Note: This procedure is an implementing program to the Oconee Nuclear Site Emergency Plan and shall be:

1. Reviewed in accordance with 10CFR50.54(q) prior to approval.
2. Forwarded to Emergency Preparedness within seven (7) days of approval.

The Chemical Treatment Ponds 1, 2 and 3 Groundwater Monitoring Sampling And Analysis Plan for the Oconee Nuclear Station, was submitted under separate cover and is considered to be incorporated as part of this document by reference.

Hard copy of the Chemical Treatment Ponds 1, 2 and 3 Groundwater Monitoring Sampling And Analysis Plan is located and maintained in the ONS Nuclear Environmental Field Support Office and is available in Fusion: Record Retention- 421734 & File Code – 705.05

**Duke Energy Corporation, LLC
Oconee Nuclear Site**

**Hazardous Materials Response Plan
(Hazardous Waste Contingency Plan)**

**Appendix 10
Emergency Response Plan**

Note: This procedure is an implementing program to the Oconee Nuclear Site Emergency Plan and shall be:

- 1. Reviewed in accordance with 10CFR50.54(q) prior to approval.**
- 2. Forwarded to Emergency Preparedness within seven (7) days of approval.**

The HAZARDOUS MATERIAL RESPONSE PLAN for the Oconee Nuclear Station, was submitted under separate cover and is considered to be incorporated as part of this document by reference.

Hard copy of the HAZARDOUS MATERIAL RESPONSE PLAN is located and maintained in the ONS Nuclear Environmental Field Support Office and is available in Fusion: Record Retention- 421734 & File Code – 722.01 .

10 CFR 50.54(q) Screening Evaluation Form

Screening and Evaluation Number							Applicable Sites		
EREG #: 02083004							BNP	<input type="checkbox"/>	
							CNS	<input type="checkbox"/>	
							CR3	<input type="checkbox"/>	
							HNP	<input type="checkbox"/>	
5AD #: N/A							MNS	<input type="checkbox"/>	
							ONS	X	
							RNP	<input type="checkbox"/>	
							GO	<input type="checkbox"/>	
Document and Revision				ONS Emergency Plan Rev 2016-003					
Part I. Description of Activity Being Reviewed (event or action, or series of actions that may result in a change to the emergency plan or affect the implementation of the emergency plan):									
#	Page /Section	Current					Proposed Change		
1.	B-6 B-20	Safety Assurance					Organizational Effectiveness		
2.	Figure B-2	TSC/OSC Liaison Tech Assistant (Mod. Engineering)					Deleted		
3.	Figure B-8a	3.Notification & Communication	Licensee	Operator (SRO/RO/NLO)	1 ^(b)	3.Notification & Communication	Licensee	Operator (SRO/RO/NLO)	
	Local/ State		SRO	1			Local/ State	Operator (SRO/RO/NLO)	
	Federal		Operator (SRO/RO/NLO)	1 ^(b)			Federal	Operator (SRO)	
4.	Figure B-8b	Notification/Communication	Notify Company Personnel, State, County, Federal Agencies and maintain communication	State Communicat ors		2	Notification/Communication	Notify Company Personnel, State, County, Federal Agencies and maintain communication	State/County Communicat or NRC Communicat or

10 CFR 50.54(q) Screening Evaluation Form

5.	Figure B-8b	N/A					Added a line above the TSC Dose Assessor to distinguish position from the EOF positions				
6.			Offsite Surveys	Field Monitoring Teams (2)	1	4 ****		Offsite Surveys	Field Monitoring Teams (2)	1	4 ****
			Onsite Surveys (Out-of-Plant)		1	1		Onsite Surveys (Out-of-Plant)	RP Qualified Individuals	1	1
			In-Plant Surveys	RP Qualified Individuals	—	1		In-Plant Surveys	RP Qualified Individuals	—	1
			Chemistry/Radio Chemistry	Rad/Chem Technician				Chemistry/Radio Chemistry	Rad/Chem Technician		
7.	F-2 F-8	Backup TSC/OSC (OOB)					Alternate TSC/OSC (OOB)				
8.	F-4	F.1.e <u>Recall of Emergency Response Organization</u> Should an emergency occur that will require activation of the Emergency Response Organization, the Shift Manager will require the following actions to occur:					F.1.e <u>Recall of Emergency Response Organization</u> Activation of the ERO is at the discretion of the SM/EC for an Unusual Event. Activation of the ERO is required at an Alert or higher. Should an emergency occur that will require activation of the Emergency Response Organization, the Shift Manager will require the following actions to occur:				
9.	F-4 F-5	4. Initiate a Site Assembly.					4. Initiate a Site Assembly (Required at an Alert or higher).				
10	P-4	A1b	AD-EP-DEC-0107	Standard Procedure for EOF Services			AD-EP-ALL-0107	Standard Procedure for EOF Services			
11	P-4	B1	AD-EP-DEC-0107	Standard Procedure for EOF Services			AD-EP-ALL-0107	Standard Procedure for EOF Services			
12	P-5	B6	AD-EP-DEC-0107	Standard Procedure for EOF Services			AD-EP-ALL-0107	Standard Procedure for EOF Services			

10 CFR 50.54(q) Screening Evaluation Form

13	P-5	B7a-d	AD-EP-DEC-0107	Standard Procedure for EOF Services		AD-EP-ALL-0107	Standard Procedure for EOF Services
14	P-9	H4	AD-EP-DEC-0107	Standard Procedure for EOF Services		AD-EP-ALL-0107	Standard Procedure for EOF Services
15	P-15	N5	EP FAM 3.1	Administration of Emergency Plan and Emergency Plan Implementing Procedures	N5	AD-EP-ALL-1000	Conduct Of Emergency Preparedness
16	P-16	P4&P5	EP FAM 3.1	Administration of Emergency Plan and Emergency Plan Implementing Procedures	P4&P5	AD-EP-ALL-1000	Conduct Of Emergency Preparedness
17	Appendix 9	Chemical Treatment Ponds 1, 2 and 3 Goundwater Monitoring Sampling And Analysis Plan			<p>Removed content from E-Plan and added following bullets to Appendix 9 coversheet;</p> <p>Note: This procedure is an implementing program to the Oconee Nuclear Site Emergency Plan and shall be: 1. Reviewed in accordance with 10CFR50.54(q) prior to approval. 2. Forwarded to Emergency Preparedness within seven (7) days of approval.</p> <p>The Chemical Treatment Ponds 1, 2 and 3 Goundwater Monitoring Sampling And Analysis Plan for the Oconee Nuclear Station, was submitted under separate cover and is considered to be incorporated as part of this document by reference. Hard copy of the Chemical Treatment Ponds 1, 2 and 3 Goundwater Monitoring Sampling And Analysis Plan is located and maintained in the ONS Nuclear Environmental Field Support Office and is available in Fusion: Record Retention- 421734 & File Code – 705.05</p>		

10 CFR 50.54(q) Screening Evaluation Form

18	Appendix 10	Appendix 10 Emergency Response Plan Revision 2010-01 February 2010	<p>Removed content from E-Plan and added following bullets to Appendix 10 coversheet</p> <p>Appendix 10</p> <p>Emergency Response Plan</p> <p>Note: This procedure is an implementing program to the Oconee Nuclear Site Emergency Plan and shall be:</p> <ol style="list-style-type: none"> 1. Reviewed in accordance with 10CFR50.54(q) prior to approval. 2. Forwarded to Emergency Preparedness within seven (7) days of approval <p>The HAZARDOUS MATERIAL RESPONSE PLAN for the Oconee Nuclear Station, was submitted under separate cover and is considered to be incorporated as part of this document by reference.</p> <p>Hard copy of the HAZARDOUS MATERIAL RESPONSE PLAN is located and maintained in the ONS Nuclear Environmental Field Support Office and is available in Fusion: Record Retention- 421734 & File Code- 722.01 .</p>
----	-------------	---	--

Section B; Revised to clarify the requirements for minimum staffing in Figure B-8b, Offsite Communicators (2), one of the Communicators is the NRC Communicator.

Section F, Clarify that ERO activation is at the discretion of the SM/EC for UE, required at Alert and higher. Clarify Site Assembly is required at an Alert or higher. Change Backup to Alternate TSC housekeeping issue per the guidance in NEI 13-01. (PRR 02080151)

Section P; 1) AD-EP-DEC-0107, Administration of Emergency Plan and Emergency revised to AD-EP-ALL-1000, Conduct Of Emergency Preparedness .

Appendix 9, Removed the Ground Water Monitoring Plan from the Emergency Plan and implemented by reference, 50.54q statement added to the document and documented location in Fusion.

Appendix 10, Removed the Hazardous Materials Response Plan from the Emergency Plan and implemented by reference, 50.54q statement added to the document and documented location in Fusion.

10 CFR 50.54(q) Screening Evaluation Form

Part II. Activity Previously Reviewed? Is this activity Fully bounded by an NRC approved 10 CFR 50.90 submittal or Alert and Notification System Design Report? If yes, identify bounding source document number or approval reference and ensure the basis for concluding the source document fully bounds the proposed change is documented below: Justification:	Yes 10 CFR 50.54(q) Effectiveness Evaluation is not required. Enter justification below and complete Attachment 4, Part V.	<input type="checkbox"/> Continue to Attachment 4, 10 CFR 50.54(q) Screening Evaluation Form, Part III	No	X
Bounding document attached (optional)				<input type="checkbox"/>
Part III. Editorial Change Is this activity an editorial or typographical change only, such as formatting, paragraph numbering, spelling, or punctuation that does not change intent? Justification:	Yes 10 CFR 50.54(q) Effectiveness Evaluation is not required. Enter justification and complete Attachment 4, Part V & VI.	<input type="checkbox"/> Continue to Attachment 4, Part IV and address non editorial changes	No	X
Part IV. Emergency Planning Element and Function Screen (Reference Attachment 1, Considerations for Addressing Screening Criteria) Does this activity involve any of the following, including program elements from NUREG-0654/FEMA REP-1 Section II? If answer is yes, then check box.				
1.	10 CFR 50.47(b)(1) Assignment of Responsibility (Organization Control)			
1a	Responsibility for emergency response is assigned.			<input type="checkbox"/>
1b	The response organization has the staff to respond and to augment staff on a continuing basis (24-7 staffing) in accordance with the emergency plan.			<input type="checkbox"/>
2.	10 CFR 50.47(b)(2) Onsite Emergency Organization			
2a	Process ensures that onshift emergency response responsibilities are staffed and assigned			X
2b	The process for timely augmentation of onshift staff is established and maintained.			X

10 CFR 50.54(q) Screening Evaluation Form

3	10 CFR 50.47(b)(3) Emergency Response Support and Resources	
3a	Arrangements for requesting and using off site assistance have been made.	<input type="checkbox"/>
3b	State and local staff can be accommodated at the EOF in accordance with the emergency plan. (NA for CR3)	<input type="checkbox"/>
4	10 CFR 50.47(b)(4) Emergency Classification System	
4a	A standard scheme of emergency classification and action levels is in use. (Requires final approval of Screen and Evaluation by EP CFAM.)	<input type="checkbox"/>
5	10 CFR 50.47(b)(5) Notification Methods and Procedures	
5a	Procedures for notification of State and local governmental agencies are capable of initiating notification of the declared emergency within 15 minutes (60 minutes for CR3) after declaration of an emergency and providing follow-up notification.	<input type="checkbox"/>
5b	Administrative and physical means have been established for alerting and providing prompt instructions to the public within the plume exposure pathway. (NA for CR3)	<input type="checkbox"/>
5c	The public ANS meets the design requirements of FEMA-REP-10, Guide for Evaluation of Alert and Notification Systems for Nuclear Power Plants, or complies with the licensee's FEMA-approved ANS design report and supporting FEMA approval letter. (NA for CR3)	<input type="checkbox"/>

10 CFR 50.54(q) Screening Evaluation Form

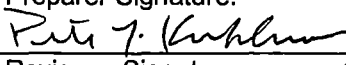

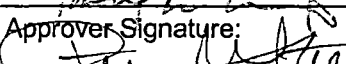
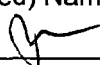
Part IV. Emergency Planning Element and Function Screen (cont.)		
6	10 CFR 50.47(b)(6) Emergency Communications	
6a	Systems are established for prompt communication among principal emergency response organizations.	<input type="checkbox"/>
6b	Systems are established for prompt communication to emergency response personnel.	<input type="checkbox"/>
7	10 CFR 50.47(b)(7) Public Education and Information	
7a	Emergency preparedness information is made available to the public on a periodic basis within the plume exposure pathway emergency planning zone (EPZ). (NA for CR3)	<input type="checkbox"/>
7b	Coordinated dissemination of public information during emergencies is established.	<input type="checkbox"/>
8	10 CFR 50.47(b)(8) Emergency Facilities and Equipment	
8a	Adequate facilities are maintained to support emergency response.	<input type="checkbox"/>
8b	Adequate equipment is maintained to support emergency response.	<input type="checkbox"/>
9	10 CFR 50.47(b)(9) Accident Assessment	
9a	Methods, systems, and equipment for assessment of radioactive releases are in use.	<input type="checkbox"/>
10	10 CFR 50.47(b)(10) Protective Response	
10a	A range of public PARs is available for implementation during emergencies. (NA for CR3)	<input type="checkbox"/>
10b	Evacuation time estimates for the population located in the plume exposure pathway EPZ are available to support the formulation of PARs and have been provided to State and local governmental authorities. (NA for CR3)	<input type="checkbox"/>
10c	A range of protective actions is available for plant emergency workers during emergencies, including those for hostile action events.	<input type="checkbox"/>
10d	KI is available for implementation as a protective action recommendation in those jurisdictions that chose to provide KI to the public.	<input type="checkbox"/>
11	10 CFR 50.47(b)(11) Radiological Exposure Control	
11a	The resources for controlling radiological exposures for emergency workers are established.	<input type="checkbox"/>
12	10 CFR 50.47(b)(12) Medical and Public Health Support	
12a	Arrangements are made for medical services for contaminated, injured individuals.	<input type="checkbox"/>
13	10 CFR 50.47(b)(13) Recovery Planning and Post-accident Operations	
13a	Plans for recovery and reentry are developed.	<input type="checkbox"/>
14	10 CFR 50.47(b)(14) Drills and Exercises	
14a	A drill and exercise program (including radiological, medical, health physics and other program areas) is established.	<input type="checkbox"/>
14b	Drills, exercises, and training evolutions that provide performance opportunities to develop, maintain, and demonstrate key skills are assessed via a formal critique process in order to identify weaknesses.	<input type="checkbox"/>
14c	Identified weaknesses are corrected.	<input type="checkbox"/>
15	10 CFR 50.47(b)(15) Emergency Response Training	
15a	Training is provided to emergency responders.	<input type="checkbox"/>

10 CFR 50.54(q) Screening Evaluation Form

Part IV. Emergency Planning Element and Function Screen (cont.)		
16	10 CFR 50.47(b)(16) Emergency Plan Maintenance	
16a	Responsibility for emergency plan development and review is established.	X
16b	Planners responsible for emergency plan development and maintenance are properly trained.	<input type="checkbox"/>
PART IV. Conclusion		
If no Part IV criteria are checked, a 10 CFR 50.54(q) Effectiveness Evaluation is not required, then complete Attachment 4, 10 CFR 50.54(q) Screening Evaluation Form, Part V. Go to Attachment 4, 10 CFR 50.54(q) Screening Evaluation Form, Part VI for instructions describing the NRC required 30 day submittal.		<input type="checkbox"/>
If any Attachment 4, 10 CFR 50.54(q) Screening Evaluation Form, Part IV criteria are checked, then complete Attachment 4, 10 CFR 50.54(q) Screening Evaluation Form, Part V and perform a 10 CFR 50.54(q) Effectiveness Evaluation. Shaded block requires final approval of Screen and Evaluation by EP CFAM.		X
Section F, Clarify that ERO activation is at the discretion of the SM/EC for UE, required at Alert and higher. Clarify Site Assembly is required at an Alert or higher. Change Backup to Alternate TSC housekeeping issue per the guidance in NEI 13-01. (PRR 02080151). No changes to the systems or methods that would affect Planning Standard 10 CFR 50.47(b)(6) Provisions exist for prompt communications among principal response organizations to emergency personnel and to the public.		
Functions: (1) Systems are established for prompt communication among principal emergency response organizations. (2) Systems are established for prompt communication to emergency response personnel.		
Note that the (Appendix 10) Hazardous Materials Response Plan ensures compliance with 29 CFR 1910.120 and is not related to and does not ensure compliance with NUREG 0654, 10CFR47, 10CFR50 or FEMA-REP-10.		
Given there is no interrelationship between the Hazardous Materials Response Plan and NUREG 0654, 10CFR47, 10CFR50 or FEMA-REP-10, changes to the Hazardous Materials Response Plan cannot result in a reduction in effectiveness in ONS's ability to implement the sixteen planning standards detailed above. A review of both the current and proposed revisions to this document reaffirmed that there is no interrelationship between the ONS Hazardous Materials Response Plan and any structure, component, procedure or process utilized to implement the sixteen planning standards. Therefore, this revision to the ONS Emergency Plan does not result in a reduction in effectiveness.		
Note that the (Appendix 9) Groundwater Sampling and Analysis Plan(SAP) establishes field protocols for Duke energy to ensure the quality of data generated during groundwater sampling events at the Oconee Nuclear Station Chemical Treatment Ponds (NPDES Permit number SC0000515). This SAP has been prepared in accordance with the EPA Environmental Investigations Standard Operating Procedures and Quality Assurance Manual (November 2001), and by the EPA in "Interim Guidelines and Specifications for Preparing Quality Assurance Plans"(QAMS-500/800). The SAP provides guidance to the field personnel concerning methodologies of field sampling, proper record-keeping protocols, data quality objectives, and data validation procedures. The SAP is not related to and does not ensure compliance with NUREG 0654, 10CFR47, 10CFR50 or FEMA-REP-10.		X
Given there is no interrelationship between the Groundwater Sampling and Analysis Plan(SAP) and NUREG 0654, 10CFR47, 10CFR50 or FEMA-REP-10, changes to the Groundwater Sampling and Analysis Plan(SAP) cannot result in a reduction in effectiveness in ONS's ability to implement the sixteen planning standards detailed above. A review of both the current and proposed revisions to this document reaffirmed that there is		

10 CFR 50.54(q) Screening Evaluation Form

no interrelationship between the ONS Groundwater Sampling and Analysis Plan(SAP) and any structure, component, procedure or process utilized to implement the sixteen planning standards. Therefore, this revision to the ONS Emergency Plan does not result in a reduction in effectiveness.

Part V. Signatures:		
Preparer Name (Print): Peter Kuhlman	Preparer Signature: 	Date: 12/7/16
Reviewer Name (Print): Don Crowl	Reviewer Signature: 	Date: 12/8/16
Approver (EP Manager Name (Print): Pat Street	Approver Signature: 	Date: 12/15/16
Approver (CFAM, as required) Name (Print) N/A 	Approver Signature:	Date:

Part VI. NRC Emergency Plan and Implementing Procedure Submittal Actions

Create two EREG General Assignments.

One for EP to provide the 10 CFR 50.54(q) summary of the analysis, or the completed 10 CFR 50.54(q), to Licensing. ☐

One for Licensing to submit the 10 CFR 50.54(q) information to the NRC within 30 days after the change is put in effect. ☐

QA RECORD

EMERGENCY PLAN CHANGE SCREENING AND
EFFECTIVENESS EVALUATIONS 10 CFR 50.54(Q)

AD-EP-ALL-0602

Rev. 1

ATTACHMENT 5

Page 1 of 9

<< 10 CFR 50.54(q) Effectiveness Evaluation Form >>

Screening and Evaluation Number		Applicable Sites	
EREG #: 02083004		BNP	<input type="checkbox"/>
		CNS	<input type="checkbox"/>
		CR3	<input type="checkbox"/>
		HNP	<input type="checkbox"/>
5AD #:		MNS	<input type="checkbox"/>
		ONS	X
		RNP	<input type="checkbox"/>
		GO	<input type="checkbox"/>
Document and Revision		ONS Emergency Plan Rev 2016-003	

Part I. Description of Proposed Change:

#	Page /Section	Current	Proposed Change																				
1.	B-6 B-20	Safety Assurance	Organizational Effectiveness																				
2.	Figure B-2	TSC/OSC Liaison Tech Assistant (Mod. Engineering)	Deleted, combined with TSC/OSC Liaison position (PRR 02083339)																				
3.	Figure B-8a	<table border="1"> <tr> <td rowspan="3">3. Notification & Communication</td> <td>Licensee</td> <td>Operator (SRO/RO/NLO)</td> <td>1^(b)</td> </tr> <tr> <td>Local/State</td> <td>SRO</td> <td>1</td> </tr> <tr> <td>Federal</td> <td>Operator (SRO/RO/NLO)</td> <td>1^(b)</td> </tr> </table>	3. Notification & Communication	Licensee	Operator (SRO/RO/NLO)	1 ^(b)	Local/State	SRO	1	Federal	Operator (SRO/RO/NLO)	1 ^(b)	<table border="1"> <tr> <td rowspan="3">3. Notification & Communication</td> <td>Licensee</td> <td>Operator (SRO/RO/NLO)</td> <td>1^(b)</td> </tr> <tr> <td>Local/State</td> <td>Operator (SRO/RO/NLO)</td> <td>1</td> </tr> <tr> <td>Federal</td> <td>Operator (SRO)</td> <td>1^(b)</td> </tr> </table>	3. Notification & Communication	Licensee	Operator (SRO/RO/NLO)	1 ^(b)	Local/State	Operator (SRO/RO/NLO)	1	Federal	Operator (SRO)	1 ^(b)
3. Notification & Communication	Licensee	Operator (SRO/RO/NLO)		1 ^(b)																			
	Local/State	SRO		1																			
	Federal	Operator (SRO/RO/NLO)	1 ^(b)																				
3. Notification & Communication	Licensee	Operator (SRO/RO/NLO)	1 ^(b)																				
	Local/State	Operator (SRO/RO/NLO)	1																				
	Federal	Operator (SRO)	1 ^(b)																				
4.	Figure B-8b	<table border="1"> <tr> <td>Notification/Communication</td> <td>Notify Company Personnel, State, County, Federal Agencies and maintain communication</td> <td>State Communicators</td> <td>2</td> </tr> </table>	Notification/Communication	Notify Company Personnel, State, County, Federal Agencies and maintain communication	State Communicators	2	<table border="1"> <tr> <td>Notification/Communication</td> <td>Notify Company Personnel, State, County, Federal Agencies and maintain communication</td> <td>State/County Communicator NRC Communicator</td> <td>1 1</td> </tr> </table>	Notification/Communication	Notify Company Personnel, State, County, Federal Agencies and maintain communication	State/County Communicator NRC Communicator	1 1												
Notification/Communication	Notify Company Personnel, State, County, Federal Agencies and maintain communication	State Communicators	2																				
Notification/Communication	Notify Company Personnel, State, County, Federal Agencies and maintain communication	State/County Communicator NRC Communicator	1 1																				
5.	Figure B-8b	N/A	Added a line above the TSC Dose Assessor to distinguish position from the EOF positions																				

ATTACHMENT 5

Page 2 of 9

<< 10 CFR 50.54(q) Effectiveness Evaluation Form >>

6.				Offsite Surveys Onsite Surveys (Out-of- Plant) In-Plant Surveys Chemistry/R adio Chemistry	Field Monitoring Teams (2) RP Qualified Individuals Rad/Chem Technician	1 1 — 1 1	4 *** * 1 1					Offsite Surveys Onsite Surveys (Out-of- Plant) In-Plant Surveys Chemistry/R adio Chemistry	Field Monitoring Teams (2) RP Qualified Individuals RP Qualified Individuals Rad/Chem Technician	1 1 — 1 1	4 *** * 1 1					
7.	P-4	A1b		AD-EP- DEC- 0107	Standard Procedure for EOF Services							AD-EP- ALL- 0107	Standard Procedure for EOF Services							
8.	P-4	B1		AD-EP- DEC- 0107	Standard Procedure for EOF Services							AD-EP- ALL- 0107	Standard Procedure for EOF Services							
9.	P-5	B6		AD-EP- DEC- 0107	Standard Procedure for EOF Services							AD-EP- ALL- 0107	Standard Procedure for EOF Services							
10.	P-5	B7a-d		AD-EP- DEC- 0107	Standard Procedure for EOF Services							AD-EP- ALL- 0107	Standard Procedure for EOF Services							
11.	P-9	H4		AD-EP- DEC- 0107	Standard Procedure for EOF Services							AD-EP- ALL- 0107	Standard Procedure for EOF Services							
12.	P-15	N5		EP FAM 3.1	Administration of Emergency Plan and Emergency Plan Implementing Procedures					N5		AD-EP- ALL- 1000	Conduct Of Emergency Preparedness							
13.	P-16	P4&P 5		EP FAM 3.1	Administration of Emergency Plan and Emergency Plan Implementing Procedures					P4&P 5		AD-EP- ALL- 1000	Conduct Of Emergency Preparedness							

Attachment 6, 10 CFR 50.54(q) Initiating Condition (IC) and Emergency Action Level (EAL) and EAL Bases Validation and Verification (V&V) Form, is attached (required for IC or EAL change)

Yes ☐
No ☒

Part II. Description and Review of Licensing Basis Affected by the Proposed Change:

Oconee Emergency Plan Revision 81-2 December 1981

B. ONSITE EMERGENCY ORGANIZATION

Adequate staffing to provide for initial emergency response in key functional areas is maintained at all times, timely augmentation of response capabilities is available, and the interfaces among various onsite response activities and offsite support and response activities are specified.

B.1. Onsite Emergency Organization

Figures B-1 through B-11 shows the Onsite organization for emergencies. These charts also show the responsibilities and the duties of the normal staff to complement and how they would interface with the Emergency Organization.

B.5 Minimum Staffing Requirements for Nuclear Power Plant Emergencies

Figure B-12 specifies the positions by title and major tasks to be performed by the persons assigned to the functional areas of emergency activity. For emergency situations, specific assignments have been made for all shifts and for plant staff members, both onsite and away from the site.

P. Responsibility for the Planning Effort: Development, Periodic Review and Distribution of the Emergency Plans

<< 10 CFR 50.54(q) Effectiveness Evaluation Form >>

P.6 Supporting: Plans

Figure P-1 gives a listing of supporting plans to the Oconee Nuclear Station Emergency Plan.

Oconee Emergency Plan Revision 2016-002

B. ONSITE EMERGENCY ORGANIZATION

Adequate staffing to provide for initial emergency response in key functional areas is maintained at all times, timely augmentation of response capabilities is available, and the interfaces among various onsite response activities and offsite support and response activities are specified.

B.1. Emergency Response Organization

Figures B-1 through B-6 shows the Oconee Nuclear Site Emergency Response Organization that would be established during an incident along with the duties the different groups would assume. Designation of personnel to the Emergency Response organization is determined by the particular job expertise of an individual. This assures that these personnel are qualified to carry out their responsibilities during an emergency. The normal staffing assignments at the Oconee Nuclear Site include emergency response responsibilities. See Figures B-10 for emergency responsibilities for designated groups. The Emergency Response Organization is outlined in Division/Section Directives. These directives establish the duties, responsibilities and alternates for each required emergency response position. Response procedures have been established for each section through these Directives.

B.5 Minimum Staffing Requirements for Nuclear Power Plant Emergencies

Figure B-8(a/b) identifies the positions by title and major tasks to be performed by the persons assigned to the functional areas of emergency activity within 45 to 75 minutes. The TSC and OSC will be activated within 75 minutes of event classification. The EOF (Figure B-9) will also be staffed and operational by a minimum staff within 75 minutes of event classification.

A detailed analysis demonstrating that on-shift personnel assigned emergency plan implementation functions are not assigned responsibilities that would prevent the timely performance of their assigned functions as specified in Figure B-8a is located in ONS-OSSA-12212012 Rev: 0.

P. Responsibility for the Planning Effort: Development, Periodic Review and Distribution of the Emergency Plans

P.6 Supporting: Plans

Figure P-2 lists plans in support of the ONS Emergency Plan.

RIS 2005-02, Clarifying the Process for Making Emergency Plan Changes, Rev. 1 states,

2) Emergency plan

a) The document prepared and maintained by the licensee that identifies and describes the licensee's methods for maintaining emergency preparedness, and responding to emergencies. An emergency plan includes the plan as originally approved by the NRC, and all subsequent changes made by the licensee with, and without, prior NRC review and approval under 10 CFR 50.54(q).

i) The licensee's emergency plan consists of:

- (1) The emergency plan as approved by the NRC via a Safety Evaluation Report (SE), or license amendment (LA) from the Office of Nuclear Reactor Regulation (NRR) or the Office of Federal and State Materials and Environmental Management Programs (FSME).**
- (2) Any subsequent changes to the emergency plan explicitly reviewed by the NRC through an SE, or LA from NRR or FSME, and found to meet the applicable regulations.**
- (3) Any subsequent changes made by the licensee without NRC review and approval after the licensee concluded that the change(s) do not constitute a decrease in effectiveness under 10 CFR 50.54(q).**

<< 10 CFR 50.54(q) Effectiveness Evaluation Form >>

The differences in ONS Emergency Plan, Revision 81-2, and the current revision of the ONS Emergency Plan have been determined to meet the regulatory requirements of the course of revisions. Each revision has been evaluated in the regulatory process has met the approval of the NRC during the inspection process.

The changes described in this evaluation do not reduce the effectiveness of the emergency plan.

Section B, there is no staffing reduction to the minimum staffing described in Figures B-8a/b, changes were made for clarification of roles. The combination of the TSC/OSC and TSC/OSC Tech Assist was due to efficient use of personnel and requested via drill critique feedback, both positions use the same personnel qualification guide.. Section P was a housekeeping change to update procedures that have been revised or superseded by fleet procedure. The changes in this revision do not change methods or ability to staff the Emergency Response Organization with principal response organizations and emergency personnel.

<< 10 CFR 50.54(q) Effectiveness Evaluation Form >>

Part III. Description of How the Proposed Change Complies with Regulation and Commitments.

If the emergency plan, modified as proposed, no longer complies with planning standards in 10 CFR 50.47(b) and the requirements in Appendix E to 10 CFR Part 50, then ensure the change is rejected, modified, or processed as an exemption request under 10 CFR 50.12, Specific Exemptions, rather than under 10 CFR 50.54(q):

10 CFR 50.47(b)(2) On-shift facility licensee responsibilities for emergency response are unambiguously defined, adequate staffing to provide initial facility accident response in key functional areas is maintained at all times, timely augmentation of response capabilities is available and the interfaces among various onsite response activities and offsite support and response activities are specified.

10 CFR 50.47(b)(16) Responsibilities for plan development and review and for distribution of emergency plans are established, and planners are properly trained.

10CFR50 Appendix E

IV. Content of Emergency Plans

A. Organization (states, in part)

The organization for coping with radiological emergencies shall be described, including definition of authorities, responsibilities, and duties of individuals assigned to the licensee's emergency organization and the means for notification of such individuals in the event of an emergency. Specifically, the following shall be included:

- 1. A description of the normal plant operating organization.*
- 2. A description of the onsite emergency response organization (ERO) with a detailed discussion of:*
 - a. Authorities, responsibilities, and duties of the individual(s) who will take charge during an emergency;*
 - b. Plant staff emergency assignments;*

.....

C. Activation of Emergency Organization (states, in part)

- 1. The entire spectrum of emergency conditions that involve the alerting or activating of progressively larger segments of the total emergency organization shall be described. The communication steps to be taken to alert or activate emergency personnel under each class of emergency shall be described.....*

G. Maintaining Emergency Preparedness

Provisions to be employed to ensure that the emergency plan, its implementing procedures, and emergency equipment and supplies are maintained up to date shall be described.

The changes identified in this revision continue to comply with regulation ONS retains the capability required by regulation to staff the minimum required positions to staff the Emergency Response Facilities with the Emergency Response Organization within the specified time period and have the descriptions of those personnel in addition to when the activation of the ERO is required.

<< 10 CFR 50.54(q) Effectiveness Evaluation Form >>

Part IV. Description of Emergency Plan Planning Standards, Functions and Program Elements Affected by the Proposed Change (Address each function identified in Attachment 4, 10 CFR 50.54(q) Screening Evaluation Form, Part IV of associated Screen):

10 CFR 50.47(b)(2) On-shift facility licensee responsibilities for emergency response are unambiguously defined, adequate staffing to provide initial facility accident response in key functional areas is maintained at all times, timely augmentation of response capabilities is available and the interfaces among various onsite response activities and offsite support and response activities are specified.

Functions:

(1) The process ensures that onshift emergency response responsibilities are staffed and assigned.

(2) The process for timely augmentation of onshift staff is established and maintained.

Elements

NUREG-0654/FEMA-REP-1 Rev 1, II, B. Onsite Emergency Organization

1. Each licensee shall specify the onsite emergency organization of plant staff personnel for all shifts and its relation to the responsibilities and duties of the normal staff complement

5. Each licensee shall specify the positions or title and major tasks to be performed by the persons to be assigned to the functional areas of emergency activity. For emergency situations, specific assignments shall be made for all shifts and for plant staff members, both onsite and away from the site. These assignments shall cover the emergency functions in Table B-1 entitled, 11 Minimum Staffing Requirements for Nuclear Power Plant Emergencies ... The minimum on-shift staffing levels shall be as indicated in Table B-1. The licensee must be able to augment on-shift capabilities within a short period after declaration of an emergency. This capability shall be as indicated in Table B-1. The implementation schedule for licensed operators, auxiliary operators and the shift technical advisor on shift shall be as specified in the July 31, 1980 letter to all power reactor licensees. Any deficiencies in the other staffing requirements of Table B-1 must be capable of augmentation within 30 minutes by September 1, 1981, and such deficiencies must be fully removed by July 1, 1982.

10 CFR 50.47(b)(16) Responsibilities for plan development and review and for distribution of emergency plans are established, and planners are properly trained.

Function:

(1) Responsibility for emergency plan development and review is established.

Elements

NUREG-0654/FEMA-REP-1 Rev 1, II, P. Responsibility for the Planning Effort: Development, Periodic Review and Distribution of Emergency Plans

7. Each plan shall contain as an appendix listing, by title, procedures required to implement the plan. The listing shall include the section(s) of the plan to be implemented by each procedure.

Part V. Description of Impact of the Proposed Change on the Effectiveness of Emergency Plan Functions:

10 CFR 50.47(b)(2) On-shift facility licensee responsibilities for emergency response are unambiguously defined, adequate staffing to provide initial facility accident response in key functional areas is maintained at all times, timely augmentation of response capabilities is available and the interfaces among various onsite response activities and offsite support and response activities are specified.

<< 10 CFR 50.54(q) Effectiveness Evaluation Form >>

Functions:

- (1) The process ensures that onshift emergency response responsibilities are staffed and assigned.
- (2) The process for timely augmentation of onshift staff is established and maintained.

Elements

NUREG-0654/FEMA-REP-1 Rev 1, II, B. Onsite Emergency Organization

1. Each licensee shall specify the onsite emergency organization of plant staff personnel for all shifts and its relation to the responsibilities and duties of the normal staff complement
5. Each licensee shall specify the positions or title and major tasks to be performed by the persons to be assigned to the functional areas of emergency activity. For emergency situations, specific assignments shall be made for all shifts and for plant staff members, both onsite and away from the site. These assignments shall cover the emergency functions in Table B-1 entitled, 11 Minimum Staffing Requirements for Nuclear Power Plant Emergencies ... The minimum on-shift staffing levels shall be as indicated in Table B-1. The licensee must be able to augment on-shift capabilities within a short period after declaration of an emergency. This capability shall be as indicated in Table B-1. The implementation schedule for licensed operators, auxiliary operators and the shift technical advisor on shift shall be as specified in the July 31, 1980 letter to all power reactor licensees. Any deficiencies in the other staffing requirements of Table B-1 must be capable of augmentation within 30 minutes by September 1, 1981, and such deficiencies must be fully removed by July 1, 1982.

10 CFR 50.47(b)(16) Responsibilities for plan development and review and for distribution of emergency plans are established, and planners are properly trained.

Function:

- (1) Responsibility for emergency plan development and review is established.

Elements

NUREG-0654/FEMA-REP-1 Rev 1, II, P. Responsibility for the Planning Effort: Development, Periodic Review and Distribution of Emergency Plans

7. Each plan shall contain as an appendix listing, by title, procedures required to implement the plan. The listing shall include the section(s) of the plan to be implemented by each procedure.

The changes made to the Emergency Plan clarify roles of the Offsite Communicator to State/County Communicator and NRC Communicator for minimum staffing requirements, no change to implementation. Filled in blanks on the B-8b table for consistency throughout the table, no change in roles or methods to maintain minimum staffing. The additional information added to Section F is restating and clarifying information contained in Section A on requirements to activate Emergency Response Organization and perform Site Assembly, no change in methods used. Changes to Section P are updates to procedures referenced in the Emergency Plan that have been superseded by fleet procedures.

The changes identified in this revision maintain the effectiveness of the Emergency Plan functions. ONS retains the capability required by regulation to notify and staff the Emergency Response Organization when required to activate.

Part VI. Evaluation Conclusion.

Answer the following questions about the proposed change.

<< 10 CFR 50.54(q) Effectiveness Evaluation Form >>

1	Does the proposed change comply with 10 CFR 50.47(b) and 10 CFR 50 Appendix E?	Yes X	No <input type="checkbox"/>
2	Does the proposed change maintain the effectiveness of the emergency plan (i.e., no reduction in effectiveness)?	Yes X	No <input type="checkbox"/>
3	Does the proposed change maintain the current Emergency Action Level (EAL) scheme?	Yes X	No <input type="checkbox"/>
4	Choose one of the following conclusions:		
a	The activity does continue to comply with the requirements of 10 CFR 50.47(b) and 10 CFR 50, Appendix E, and the activity does not constitute a reduction in effectiveness or change in the current Emergency Action Level (EAL) scheme. Therefore, the activity can be implemented without prior NRC approval.		X
b	The activity does not continue to comply with the requirements of 10 CFR 50.47(b) or 10 CFR 50 Appendix E or the activity does constitute a reduction in effectiveness or EAL scheme change. Therefore, the activity cannot be implemented without prior NRC approval.		<input type="checkbox"/>

Part VII. Disposition of Proposed Change Requiring Prior NRC Approval

Will the proposed change determined to require prior NRC approval be either revised or rejected?	Yes <input type="checkbox"/>	No <input type="checkbox"/>
If No, then initiate a License Amendment Request in accordance 10 CFR 50.90 and AD-LS-ALL-0002, Regulatory Correspondence, and include the tracking number: _____.		

EMERGENCY PLAN CHANGE SCREENING AND
EFFECTIVENESS EVALUATIONS 10 CFR 50.54(Q)

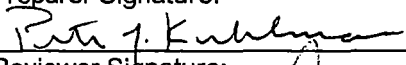
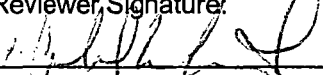

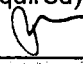
AD-EP-ALL-0602

Rev. 1

ATTACHMENT 5

Page 9 of 9

<< 10 CFR 50.54(q) Effectiveness Evaluation Form >>

Part VIII. Signatures: EP CFAM Final Approval is required for changes affecting risk significant planning standard 10 CFR 50.47(b)(4).		
Preparer Name (Print): Peter Kuhlman	Preparer Signature: 	Date: 12/7/16
Reviewer Name (Print): Don Crowl	Reviewer Signature: 	Date: 12/5/16
Approver (EP Manager) Name (Print): Pat Street	Approver Signature: 	Date: 12/15/16
Approver (CFAM, as required) Name (Print): N/A 	Approver Signature:	Date:
<p>If the proposed activity is a change to the E-Plan or implementing procedures, then create two EREG General Assignments.</p> <ul style="list-style-type: none"> One for EP to provide the 10 CFR 50.54(q) summary of the analysis, or the completed 10 CFR 50.54(q), to Licensing. <input type="checkbox"/> One for Licensing to submit the 10 CFR 50.54(q) information to the NRC within 30 days after the change is put in effect. <input type="checkbox"/> 		

QA RECORD