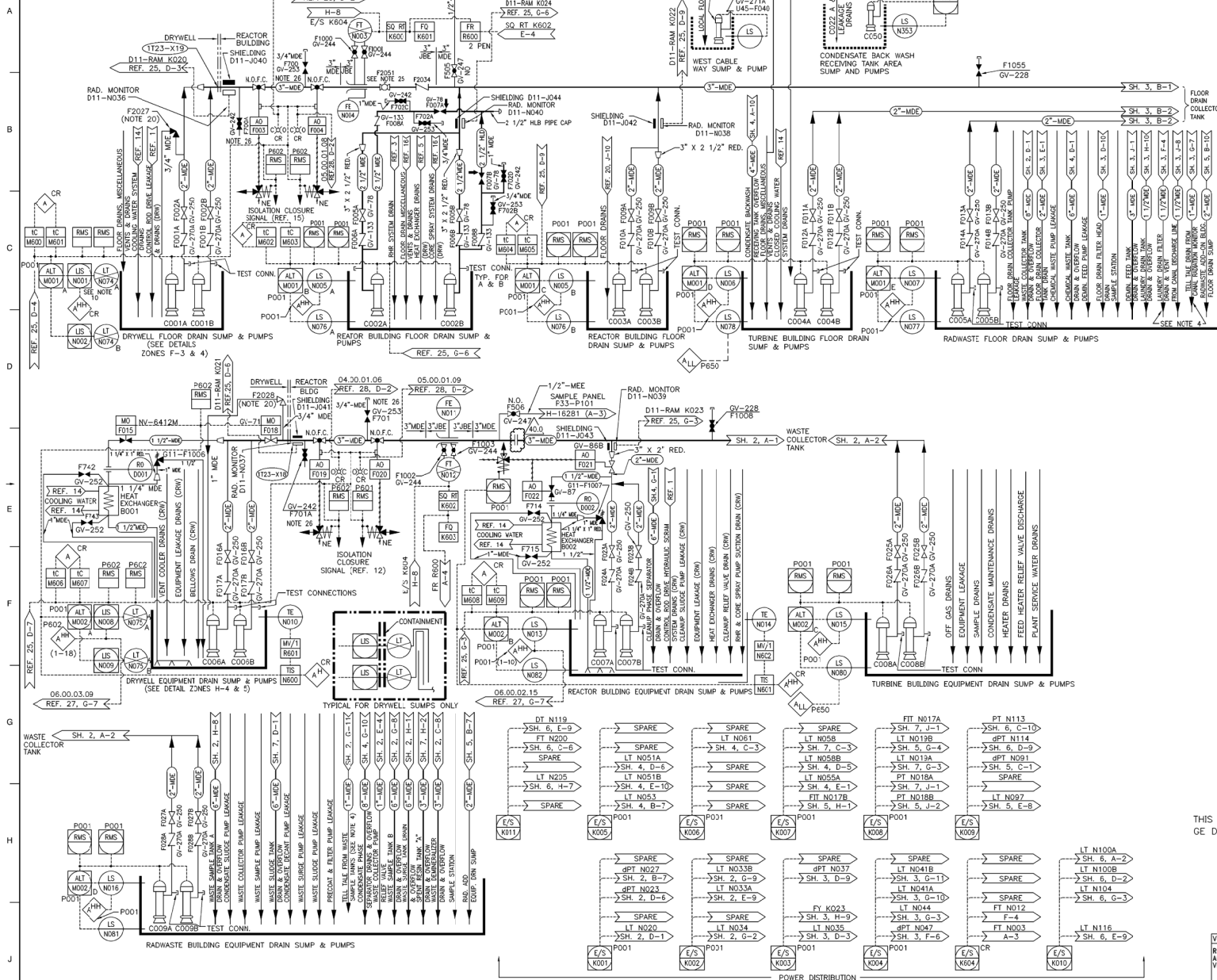


9/191-H



NOTES:

1. ALL EQUIPMENT & INSTRUMENTS ARE PREFIXED BY SYSTEM NO. 011 UNLESS OTHERWISE NOTED.
2. ALL AIR OPERATED VALVES ARE SHOWN IN FAIL AND NORMAL MODE.
3. INCOMING PIPING TO SUMPS SHALL TERMINATE BELOW LOW WATER LEVEL TO PROVIDE A WATER SEAL UNLESS OTHERWISE SHOWN. OFF GAS LINE DRAINS SHALL BE SEALED AS ABOVE OR WITH LOOP SEALS SUFFICIENT TO PREVENT OFF GASES FROM ENTERING SUMP.
4. ALL MOTOR AND SOLENOID OPERATED VALVES, CENTRIFUGES AND PUMPS SHALL BE PROVIDED WITH ONE SET OF STATUS INDICATING LIGHTS ADJACENT TO THE REMOTE MANUAL SWITCH. ADDITIONAL LIGHTS ARE NOTED.
5. INTERLOCK TO PREVENT OPENING BOTH VALVES AT THE SAME TIME.
6. USED DURING PRESTARTUP ONLY. TO BE REMOVED AFTER STARTUP.
7. TANK VENTS AND SUMP VENTS SHALL BE PIPED TO BUILDING VENT SYSTEM. 12\"/>

REFERENCES

- | REFERENCE | DESCRIPTION | REV. NO. | SSL NO. |
|-----------|--|-----------------|----------|
| 1. | CONTROL ROD DRIVE HYDRAULIC SYSTEM P&ID | 011-1010 | H-16065 |
| 2. | PROCESS RADIATION MON. SYSTEM P&ID | D11-1010 | H-16564 |
| 3. | RESIDUAL HEAT REMOVAL SYSTEM P&ID | E11-1010 | H-16329 |
| 4. | RADIWASTE SYSTEM F&D | G11-1030 | H-16188 |
| 5. | REACTOR WATER CLEANUP S/S P&ID | G11-1010 | H-16189 |
| 6. | PRESSURE INTEGRITY SPECIFICATION | A61-4030 | S |
| 7. | PLANT REQUIREMENTS | A61-4020 | S15051 |
| 8. | PIPING AND INSTRUMENT SYMBOLS | A61 | S |
| 9. | RADIWASTE SYSTEM P.D. | G11-1020 | S |
| 10. | RADIWASTE SYSTEM DES. SPEC. | G11-4010 | H-16331 |
| 11. | CORE SPRAY SYSTEM P&ID | E21-1010 | S |
| 12. | NUCLEAR BOILER SYSTEM F&D | B21-1030 | H-16002 |
| 13. | FUEL POOL COOLING SYS. P&ID | G41-1010 | H-16009 |
| 14. | REACTOR BLDG. C.C.W. SYS. P&ID | P42-1010 | H-16017 |
| 15. | RADIWASTE BLDG. ADD. SUPPORT SYS. | G11-1040 & 1050 | H-16015 |
| 16. | REACTOR & RADIWASTE DRAINAGE DIAG. | T45-1020 | H-16013 |
| 17. | FUEL POOL FILTER/DEMIN. SYS. P&ID | G41-1020 | H-16003 |
| 18. | PIPING & INSTRUMENTATION DIAGRAM RADIWASTE PACKAGING SYSTEM. | G11-9090 | SK-16138 |
| 19. | RADIWASTE HEAT TRACING ELEMENTARY DIAGRAM | G11-P030 | H-19548 |
| 20. | LEAK DETECTION SYSTEM | T45-1030 | H-16039 |
| 21. | WASTE GAS TREATMENT BLDG. SUPPORT SYSTEMS P&ID | N62-1015 | H-16543 |
| 22. | PROCESS RADIATION MON. IED SHT. 2 | | H-16564 |
| 23. | PROCESS RADIATION MON. IED SHT. 3 | | H-16565 |
| 24. | PROCESS RADIATION MON. IED SHT. 4 | | H-16566 |
| 25. | PROCESS RADIATION MON. IED SHT. 5 | D11-1010 | H-16165 |
| 26. | OFF GAS RECOMBINER BLDG. SUPPORT SYSTEMS P&ID | N62 | H-16523 |
| 27. | ANNUNCIATOR SIGNALS TO SPDS RIP LED | X75-1010 | H-16402 |
| 28. | DIGITAL INPUT SIGNALS TO THE ENH. COMPUTER SYSTEM I.E.D. SHEET 6 OF 15. | X75-1010 | H-16405 |
| 29. | RADIWASTE BUILDING-STEEL SUPPORTS FOR SHELDED DETECTOR WELL-NEAT LINE AND REIN. FOR CONCRETE PADS AT EL. 108'-0" | D11-0009 | H-15741 |

THIS DRAWING DEVELOPED FROM
GE DWG. S-15357

CRITICAL DOCUMENT

MPL NO. G11-1010

ACAD2C H16176

SOUTHERN
COMPANY

"This document contains proprietary, confidential, and/or trade secret information of the subsidiaries of Southern Company or of third parties. It is intended for use only by employees of, or authorized contractors of, the subsidiaries of Southern Company. Unauthorized reproduction, use, distribution, copying, dissemination, or disclosure of any portion hereof is prohibited."

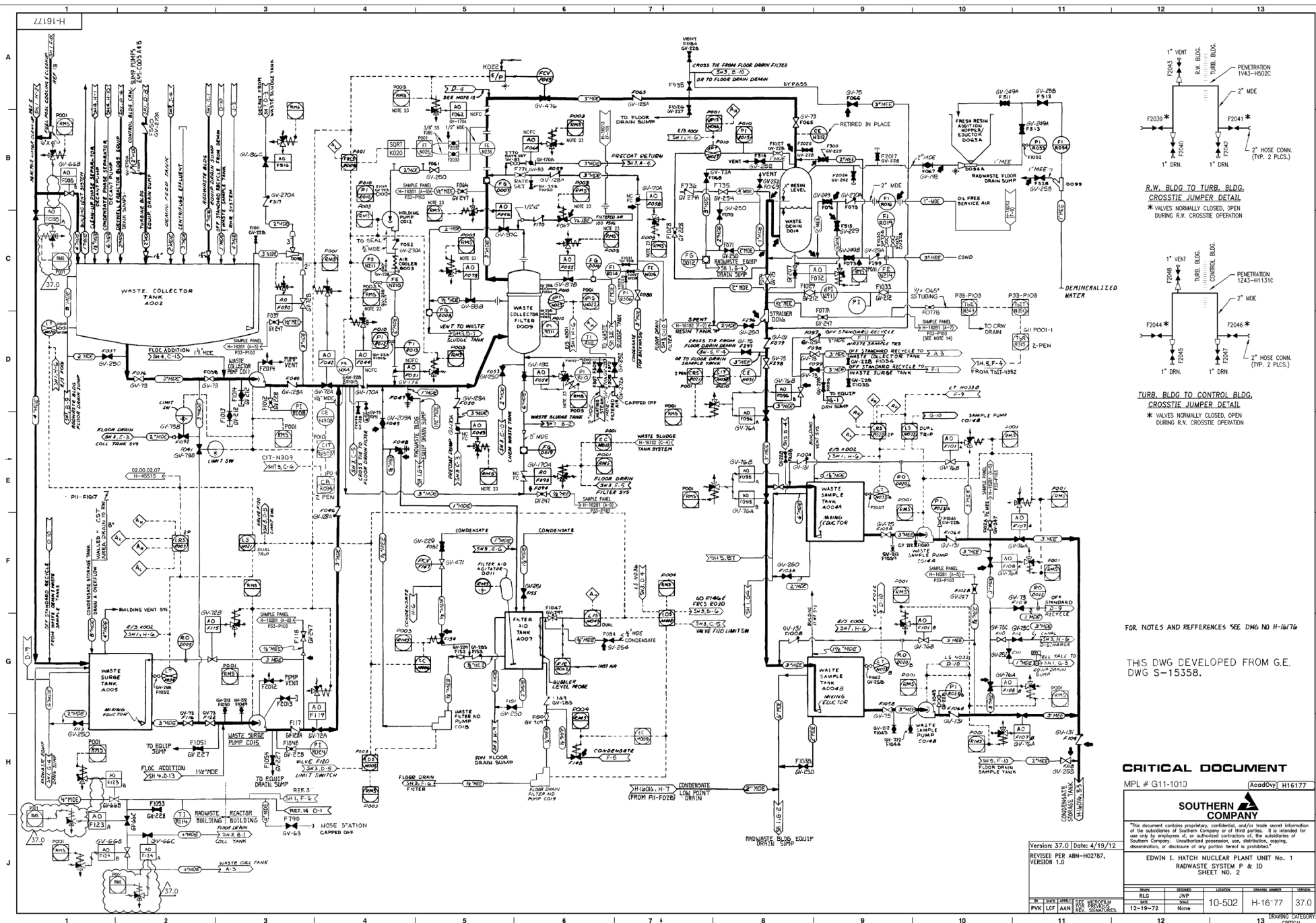
EDWIN I. HATCH NUCLEAR PLANT UNIT No. 1
RADIWASTE SYSTEM P&ID
SHEET NO. 1

Version: 40.01 Date: 09/20/11
REVISED PER
ARM 110155501M003,
VER. 1.0

NO.	DATE	BY	CHKD	REV.	DESCRIPTION
1	12-19-72	None			

NO.	DATE	BY	CHKD	REV.	DESCRIPTION
1	12-19-72	None			

DRAWING CATEGORY:
CRITICAL



FOR NOTES AND REFERENCES SEE DNG NO H-16/76

THIS DWG DEVELOPED FROM G.E.
DWG S-15358.

CRITICAL DOCUMENT

MPL # G11-1010 AcadOvy H16177

SOUTHERN 
COMPANY

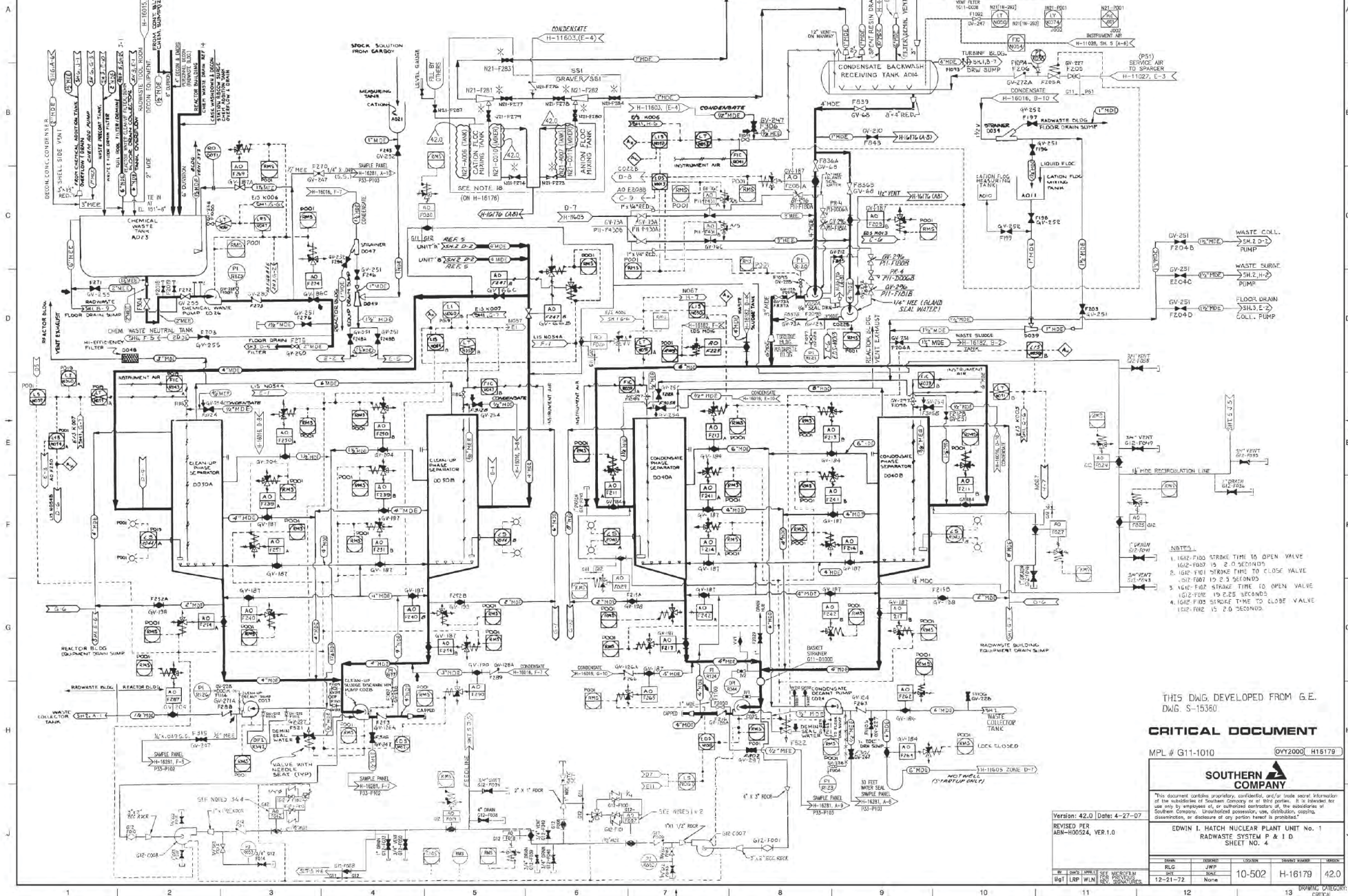
This document contains proprietary, confidential, and/or trade secret information of the subsidiaries of Southern Company or of third parties. It is intended for use only by employees of, or authorized contractors of, the subsidiaries of Southern Company. Unauthorized possession, use, distribution, copying, dissemination, or disclosure of any portion hereof is prohibited.

EDWIN I. HATCH NUCLEAR PLANT UNIT No. 1
RADWASTE SYSTEM P & ID
SHEET NO. 2

DRWN	DESIGNED	LOCATION	DRAWING NUMBER	VERSION
RLG	JWP	10-502	H-16177	37.0
DATE	SOLE			

13	DRAWING CATEGORY
	CERTIFICATION

6/1617



THIS DWG. DEVELOPED FROM G.E.
DWG. S-15380

CRITICAL DOCUMENT

MPL # G11-1010 OVT2000 H15179



This document contains proprietary, confidential, and/or trade secret information of the Southern Company or its subsidiaries. It is intended for use only by employees of, or authorized contractors of, the Southern Company or its subsidiaries. Unauthorized disclosure, use, distribution, copying, dissemination, or disclosure of any portion herein is prohibited.

EDWIN I. HATCH NUCLEAR PLANT UNIT No. 1
RADWASTE SYSTEM P & I D
SHEET NO. 4

Version: 42.0 Date: 4-27-07
REVISED PER
ASH-100024, VER 1.0

Rev	By	Check	Appr	Date	Description
1	WJL	WJL	WJL	12-21-72	None
2	WJL	WJL	WJL	10-502	10-502
3	WJL	WJL	WJL	10-502	10-502
4	WJL	WJL	WJL	10-502	10-502

10-502

10-502

10-502

10-502

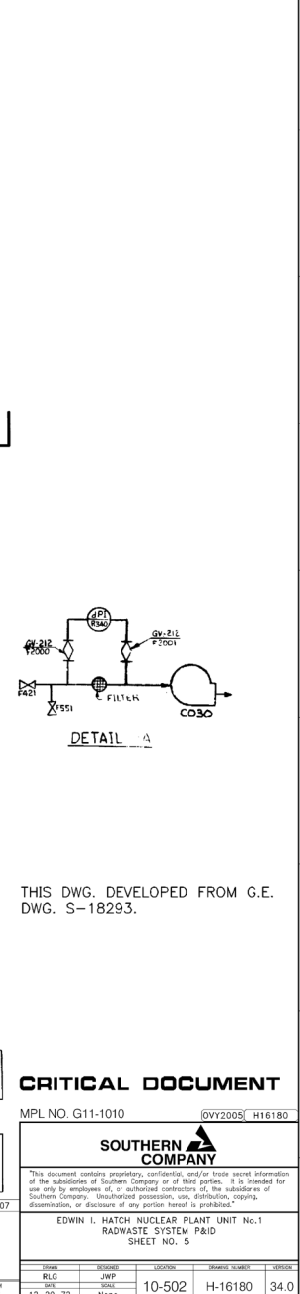
10-502

10-502

10-502

10-502

10-502



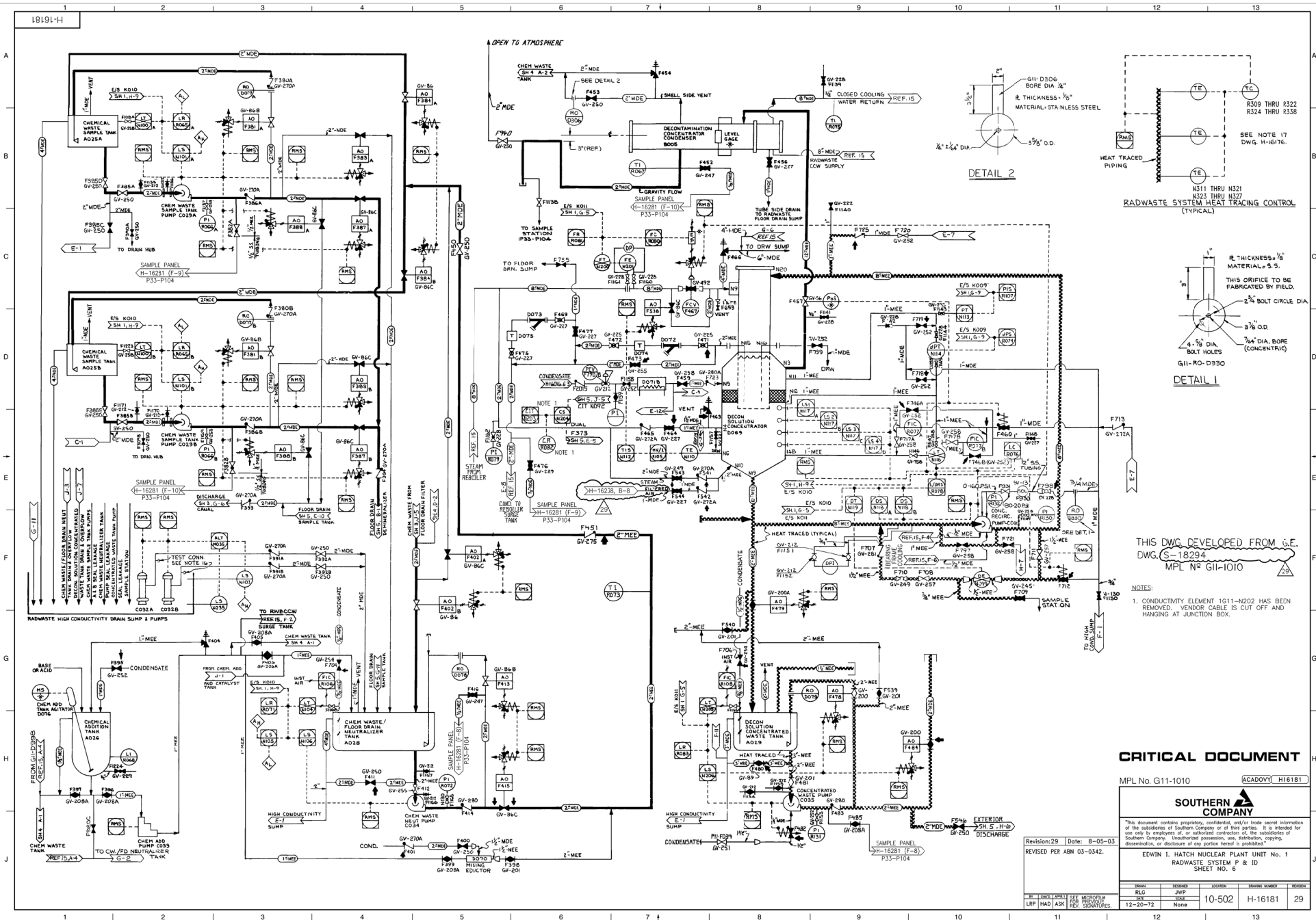
RLG	JWP	10-502	H-16180	3
DATE	SIGLE			

BY	OWNED	APPLIC	SEE MICROFILM
----	-------	--------	---------------

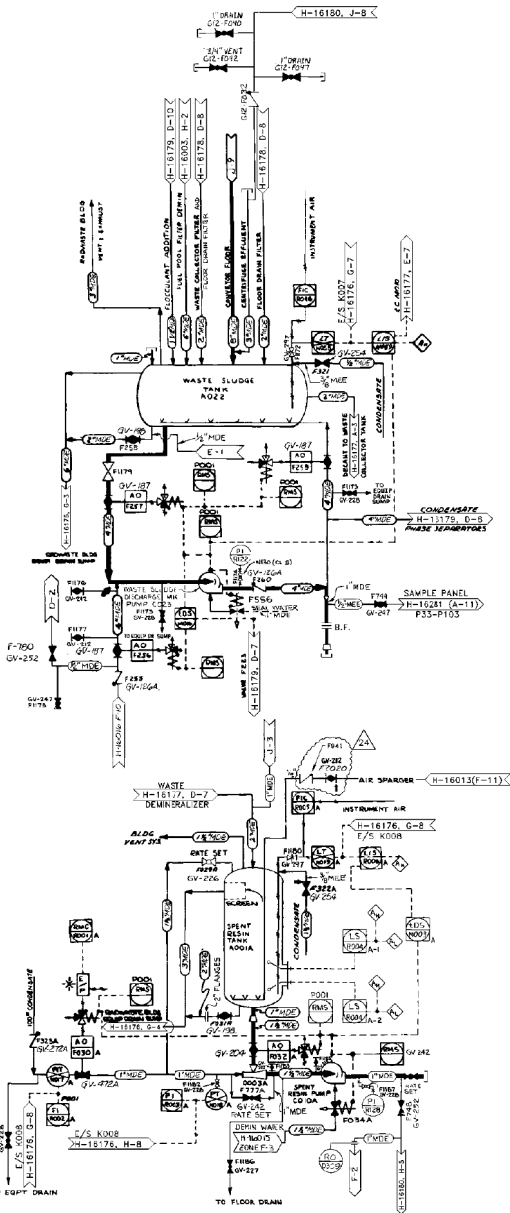
RLG	JWP	10-502	H-16180	3
DATE	SIGLE			

RLG	JWP	10-502	H-16180	3
DATE	SIGLE			

T:\WORK DOCUMENTS\NIN\330342\DRAWINGS\CAL\H16181.CAL 8/5/2003 1:53:21 PM



28191-H



THIS DWG. DEVELOPED FROM G.E.
DWG S-15361.

CRITICAL DOCUMENT

MPL No. G11-1010

ACADOMY H-16182



This document contains proprietary, confidential, and/or trade secret information of the Southern Company or of its subsidiaries. It is intended for use only by employees of or authorized contractors of the Southern Company. Unauthorized possession, use, distribution, copying, reproduction, or disclosure of any portion hereof is prohibited.

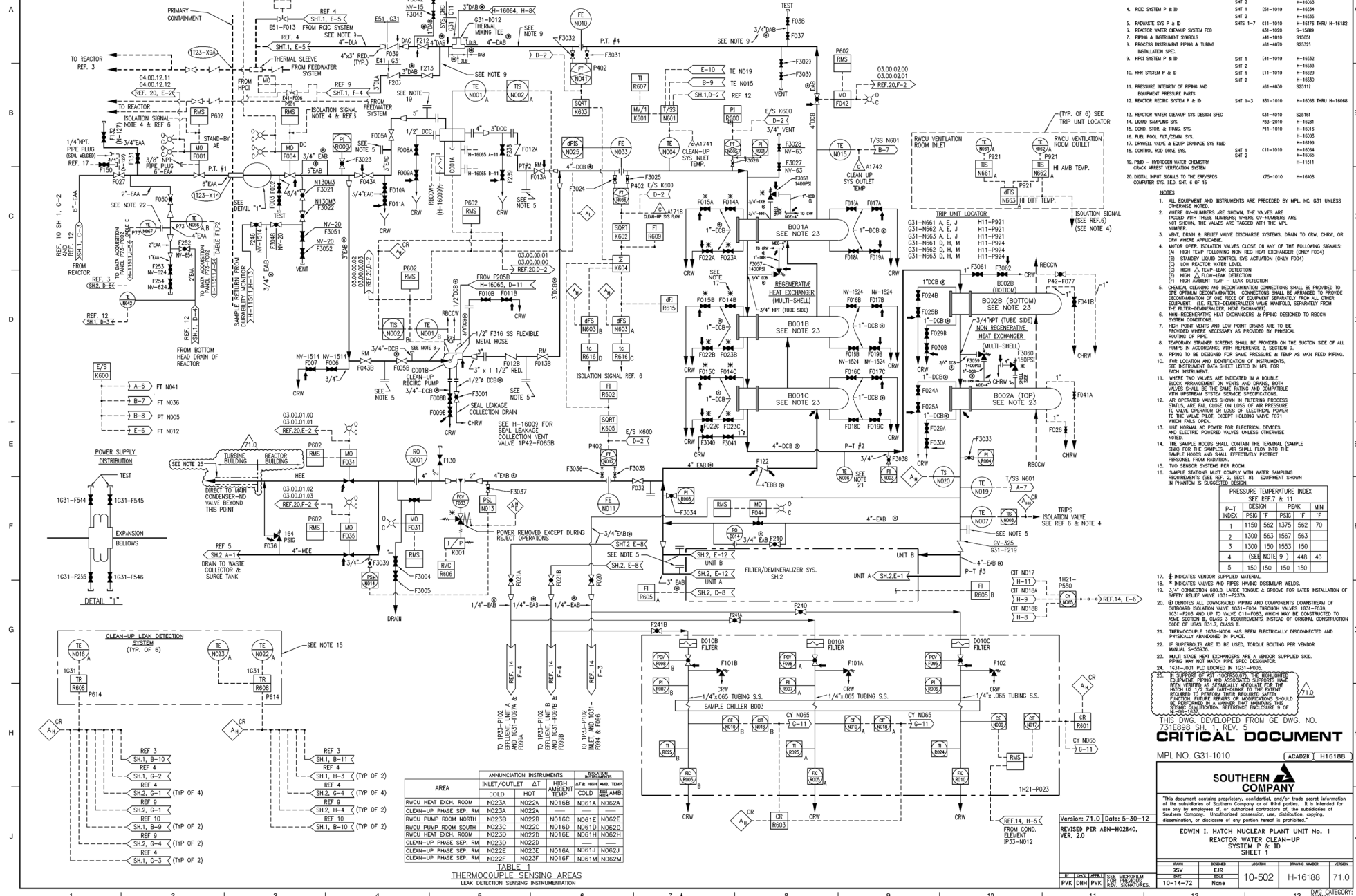
Revision: 24 Date: 04/20/04

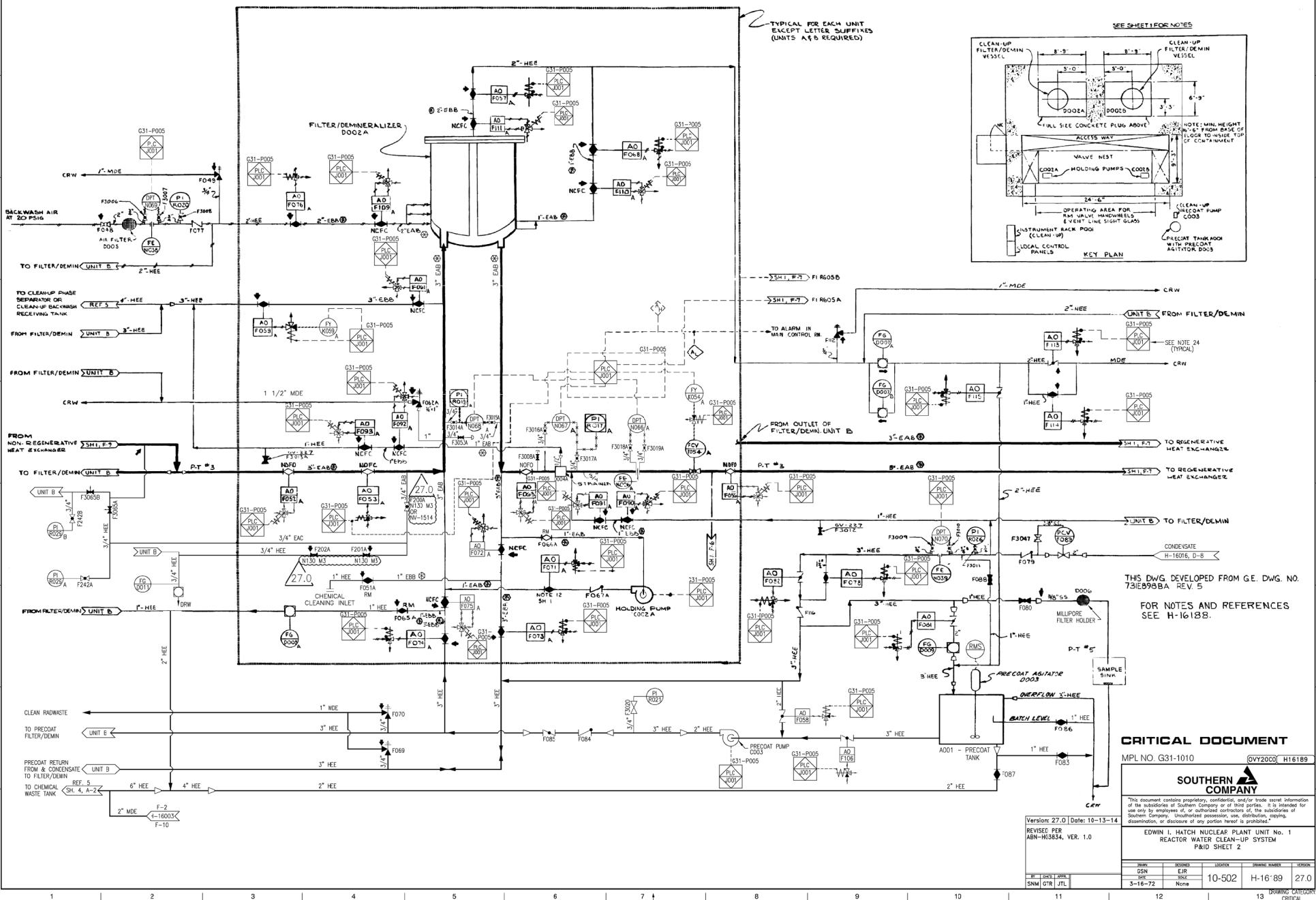
REVISED PER
ABN 1039801501-1.

EDWIN I. HATCH NUCLEAR PLANT UNIT No. 1
RADWASTE SYSTEM PAID
SHEET No. 7

NO.	DATE	BY	CHKD	APP'D	REVISION	DESCRIPTION	REMARKS
10-502	10-20-72	None	None	None	None	None	None

88191-H





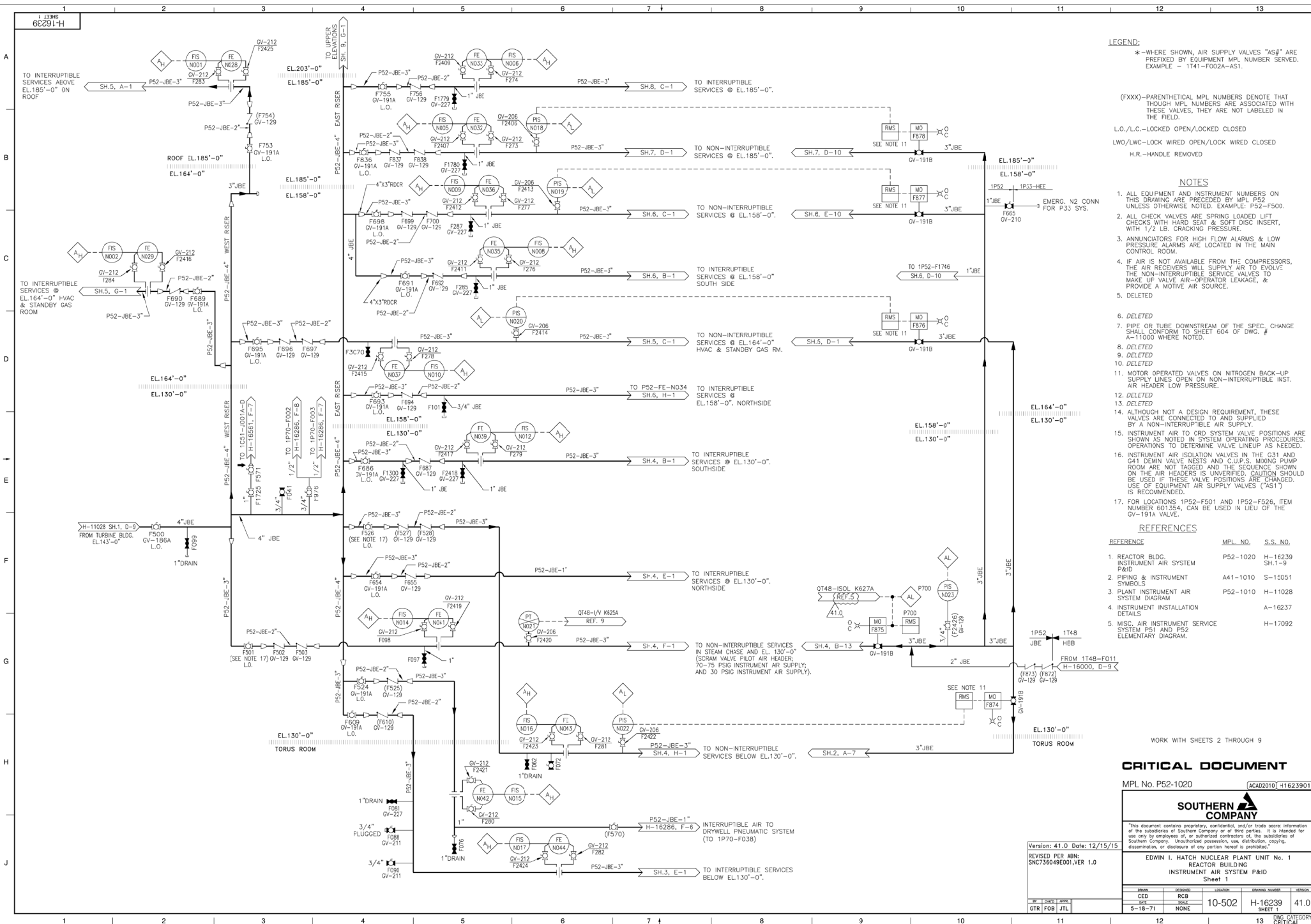
SOUTHERN
COMPANY

"This document contains proprietary, confidential, and/or trade secret information of the subsidiaries of Southern Company or of third parties. It is intended for use only by employees of, or authorized contractors of, the subsidiaries of Southern Company. Unauthorized possession, use, distribution, copying, dissemination, or disclosure of any portion hereof is prohibited."

EDWIN I. HATCH NUCLEAR PLANT UNIT No. 1
REACTOR WATER CLEAN-UP SYSTEM
P&ID SHEET 2

PLAN	DESIGN	LOCATION	DRAWING NUMBER	VERSION
GSN	EJR	10-502	H-16-89	27.0
DATE	SCALE			
3-16-72	None			

12	13	DRAWING CATEGORY CRITICAL
----	----	------------------------------



LEGEND:

*—WHERE SHOWN, AIR SUPPLY VALVES "AS#" ARE PREFIXED BY EQUIPMENT MPL NUMBER SERVED. EXAMPLE = 1T41-F002A-AS1.

(FXXX)—PARENTHERICAL MPL NUMBERS DENOTE THAT THOUGH MPL NUMBERS ARE ASSOCIATED WITH THESE VALVES, THEY ARE NOT LABELED IN THE FIELD.

L.O./L.C.—LOCKED OPEN/LOCKED CLOSED
LWO/LWC—LOCK WIRE OPEN/LOCK WIRE CLOSED
H.R.—HANDLE REMOVED

NOTES

1. ALL EQUIPMENT AND INSTRUMENT NUMBERS ON THIS DRAWING ARE PRECEDED BY MPL P52 UNLESS OTHERWISE NOTED. EXAMPLE: P52-F500.
2. ALL CHECK VALVES ARE SPRING LOADED LIFT CHECKS WITH HARD SEAT & SOFT DISC INSERT, WITH 1/2 LB. CRACKING PRESSURE.
3. ANNUNCIATORS FOR HIGH FLOW ALARMS & LOW PRESSURE ALARMS ARE LOCATED IN THE MAIN CONTROL ROOM.
4. IF AIR IS NOT AVAILABLE FROM THE COMPRESSORS, THE AIR RECEIVERS WILL SUPPLY AIR TO EVOLVE THE NON-INTERRUPTIBLE SERVICE VALVES TO MAKE UP VALVE AIR-OPERATOR LEAKAGE, & PROVIDE A MOTIVE AIR SOURCE.
5. DELETED
6. DELETED
7. PIPE OR TUBE DOWNSTREAM OF THE SPEC. CHANGE SHALL CONFORM TO SHEET 604 OF DWG. # A-11000 WHERE NOTED.
8. DELETED
9. DELETED
10. DELETED
11. MOTOR OPERATED VALVES ON NITROGEN BACK-UP SUPPLY LINES OPEN ON NON-INTERRUPTIBLE INST. AIR HEADER LOW PRESSURE.
12. DELETED
13. DELETED
14. ALTHOUGH NOT A DESIGN REQUIREMENT, THESE VALVES ARE CONNECTED TO AND SUPPLIED BY A NON-INTERRUPTIBLE AIR SUPPLY.
15. INSTRUMENT AIR TO CRD SYSTEM VALVE POSITIONS ARE SHOWN AS NOTED IN SYSTEM OPERATING PROCEDURES. OPERATIONS TO DETERMINE VALVE LINEUP AS NEEDED.
16. INSTRUMENT AIR ISOLATION VALVES IN THE C31 AND G41 DEMIN VALVE NESTS AND C.U.P.S. MIXING PUMP ROOM ARE NOT TAGGED AND THE SEQUENCE SHOWN ON THE AIR HEADERS IS UNCHANGED. CAUTION SHOULD BE USED IF THESE VALVE POSITIONS ARE CHANGED. USE OF EQUIPMENT AIR SUPPLY VALVES ("AS1") IS RECOMMENDED.
17. FOR LOCATIONS 1P52-F501 AND 1P52-F526, ITEM NUMBER 601354, CAN BE USED IN LIEU OF THE QV-191A VALVE.

REFERENCES

REFERENCE	MPL NO.	S.S. NO.
1. REACTOR BLDG. INSTRUMENT AIR SYSTEM P&ID	P52-1020	H-16239 SH.1-9
2. PIPING & INSTRUMENT SYMBOLS	A41-1010	S-15051
3. PLANT INSTRUMENT AIR SYSTEM DIAGRAM	P52-1010	H-11028
4. INSTRUMENT INSTALLATION DETAILS		A-16237
5. MISC. AIR INSTRUMENT SERVICE SYSTEM P51 AND P52 ELEMENTARY DIAGRAM.		H-17092

WORK WITH SHEETS 2 THROUGH 9

CRITICAL DOCUMENT

MPL No. P52-1020 ACAD2010 11623901



"This document contains proprietary, confidential, and/or trade secret information of the subsidiaries of Southern Company or of third parties. It is intended for use only by employees of, or authorized contractors of, the subsidiaries of Southern Company. Unauthorized possession, use, distribution, copying, dissemination, or disclosure of any portion hereof is prohibited."

EDWIN I. HATCH NUCLEAR PLANT UNIT No. 1
REACTOR BUILDING
INSTRUMENT AIR SYSTEM P&ID
Sheet 1

DESIGN	REVISION	LOCATION	DATE	REVISION
DESIGNED	RCB			
CHECKED	RCB			
DATE	5-18-71	NONE	10-502	H-16239
				41.0
				SHEET 1

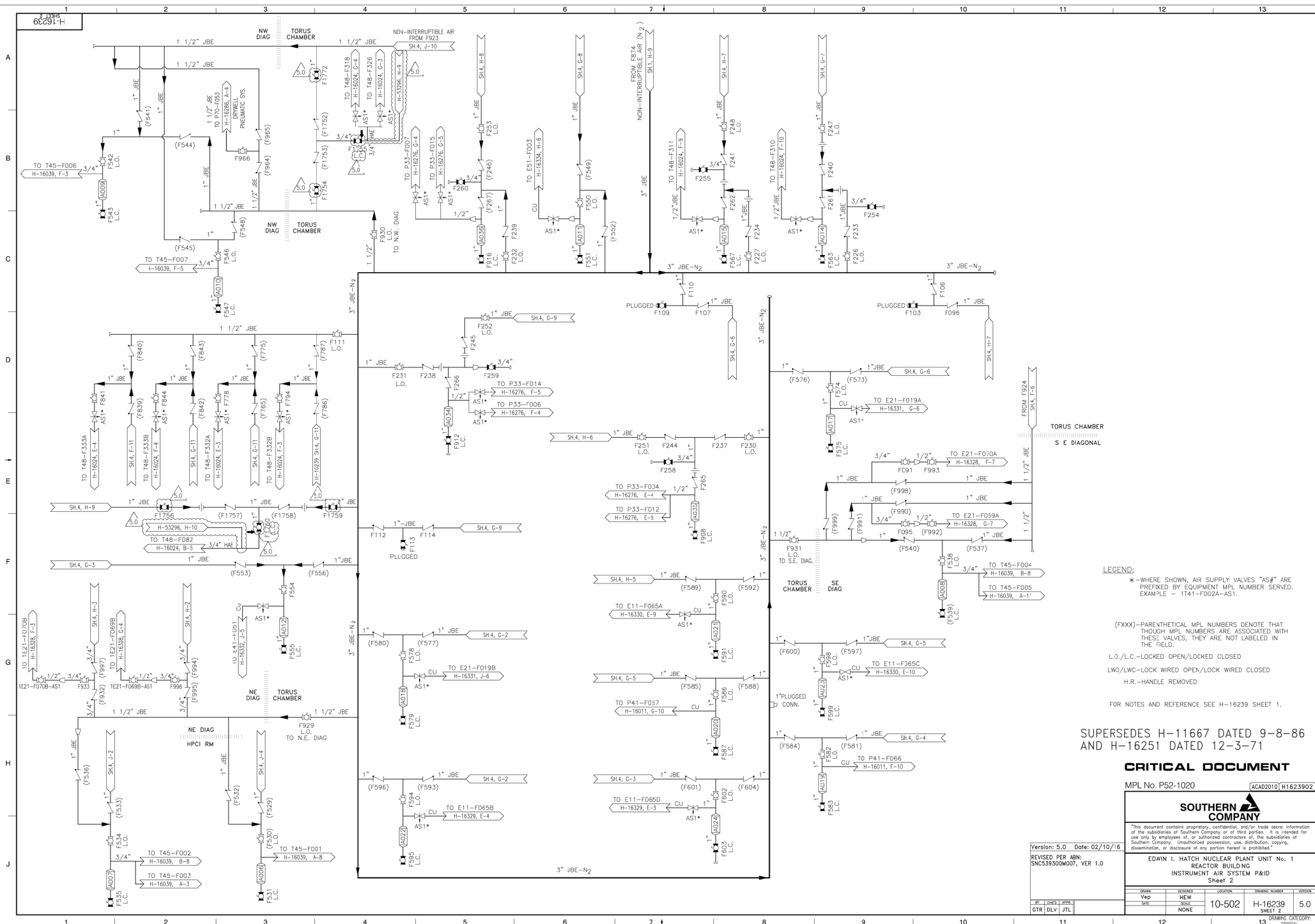
Version: 41.0 Date: 12/15/15

REVISED PER ABE:

SNCT36048ED01,VER 1.0

DESIGN	REVISION	LOCATION	DATE	REVISION
DESIGNED	RCB			
CHECKED	RCB			
DATE	5-18-71	NONE	10-502	H-16239
				41.0
				SHEET 1

WORK CATEGORY: CRITICAL



LEGEND:

*-WHERE SHOWN, AIR SUPPLY VALVES "AS#" ARE
PREFIXED BY EQUIPMENT MPL NUMBER SERVED.
EXAMPLE - 1T41-F002A-AS1.

(FXXX)-PARENTHETICAL MPL NUMBERS DENOTE THAT THOUGH MPL NUMBERS ARE ASSOCIATED WITH THESE VALVES, THEY ARE NOT LABELED IN THE FIELD.

L.O./L.C.—LOCKED OPEN/LOCKED CLOSED

LWO/LWC—LOCK WIRED OPEN/LOCK WIRED CLOSED

H.R.—HANDLE REMOVED

FOR NOTES AND REFERENCE SEE H-16239 SHEET 1.

SUPERSEDES H-11667 DATED 9-8-86
AND H-16251 DATED 12-3-71

CRITICAL DOCUMENT

MPL No. P52-1020

ACAD2010 H1623902

SOUTHERN
COMPANY

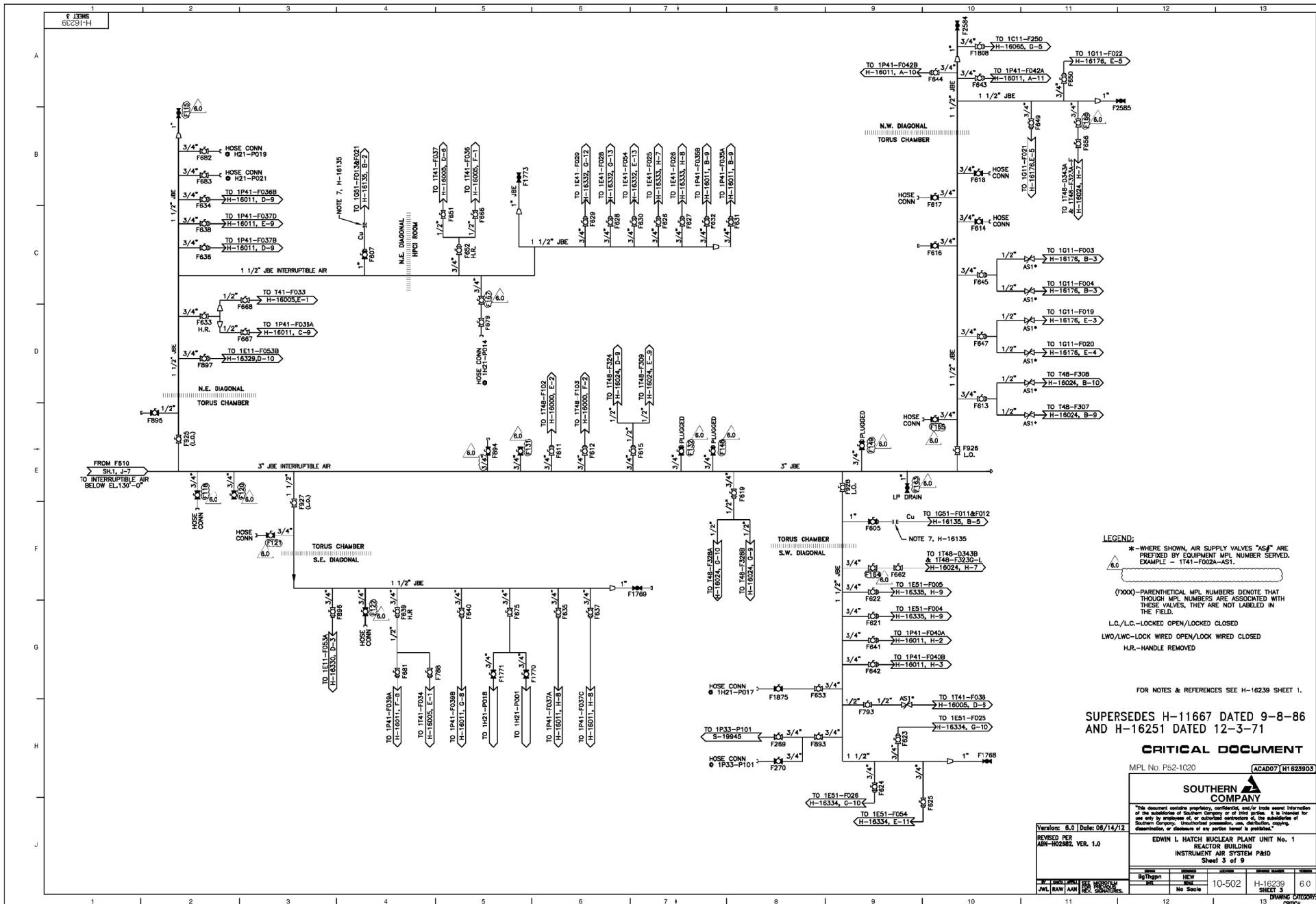
This document contains proprietary, confidential, and/or trade secret information of the subsidiaries of Southern Company or of third parties. It is intended for use only by employees of, or authorized contractors of, the subsidiaries of Southern Company. Unauthorized possession, use, distribution, copying, dissemination, or disclosure of any portion hereof is prohibited.

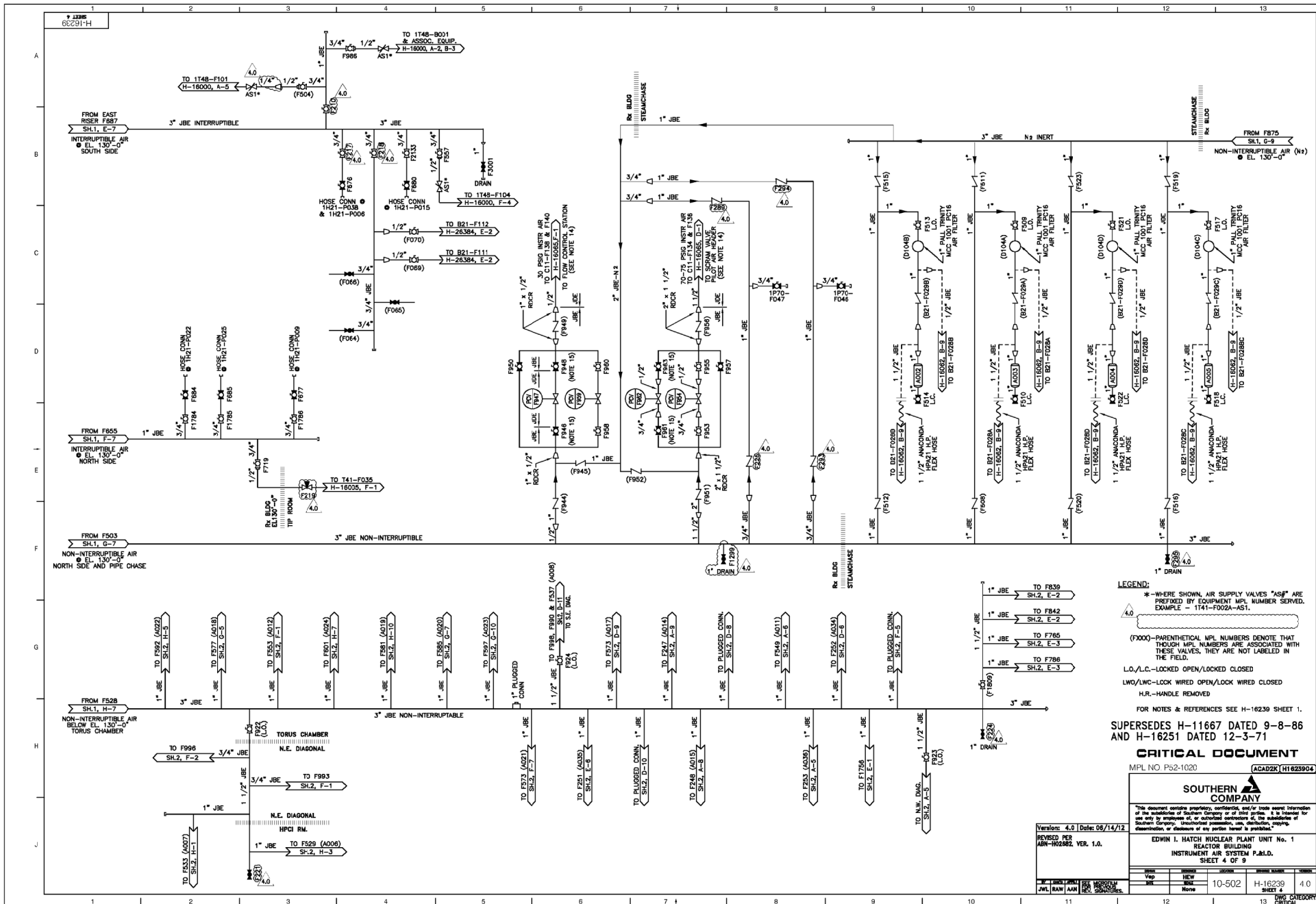
EDWIN I. HATCH NUCLEAR PLANT UNIT No. 1
REACTOR BUILDING
INSTRUMENT AIR SYSTEM P&ID
Sheet 2

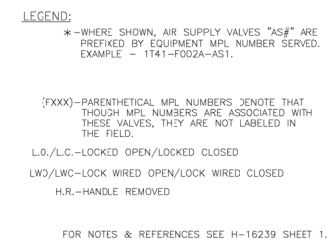
Version: 5.0 Date: 02/10/16
REVISED PER ABN:
SNC539300M007, VER 1.0

			DRAWING			
			DRAWN	DESIGNED	LOCATION	DRAWING NUMBER
			Vep	HEW	10-502	H-16239 SHEET 2
			DATE	SCALE		
BY	CHECK	APPV				
GTR	DLV	JTL				

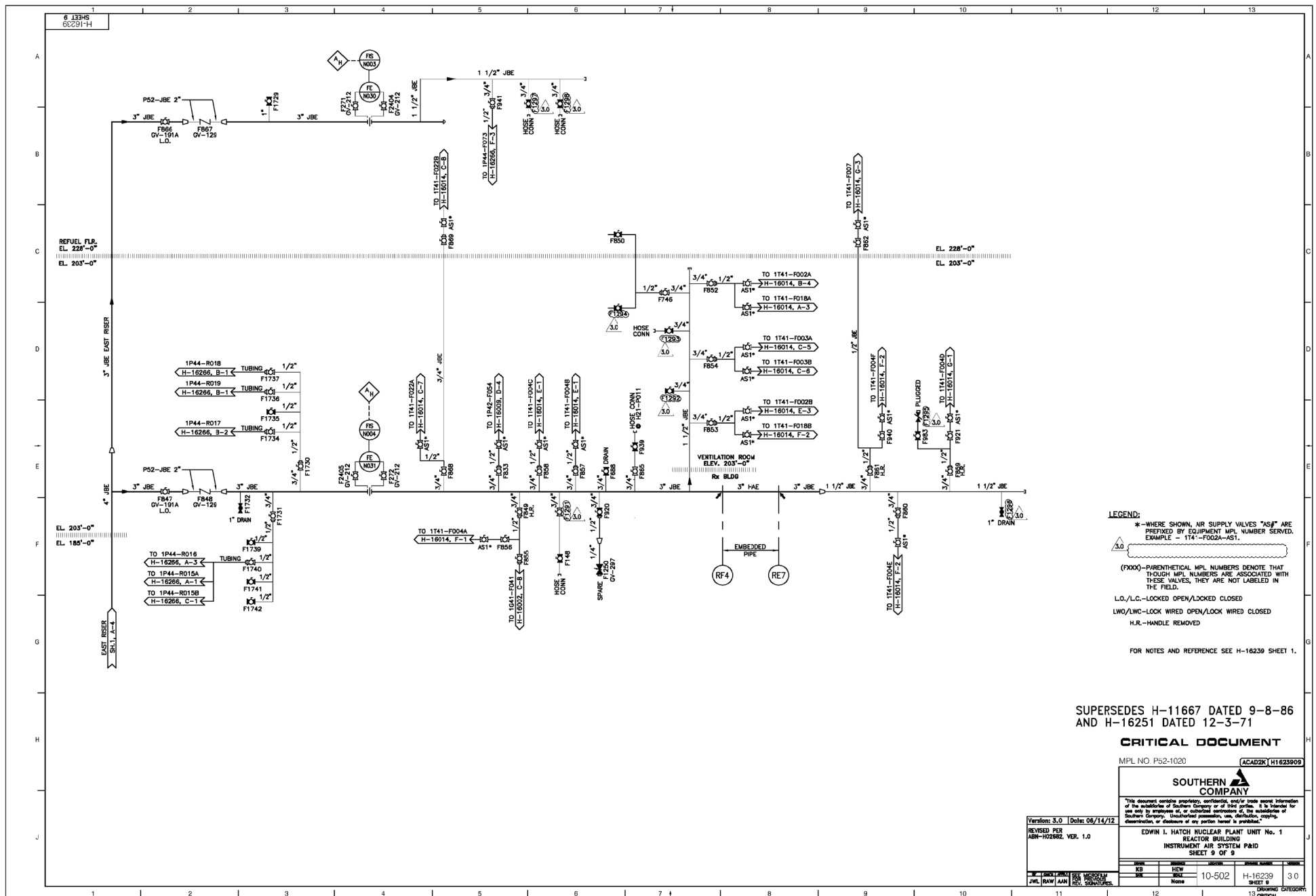
13 DRAWING CA
CRITIC







DWG CAT
CRITICA



SUPERSEDES H-11667 DATED 9-8-86
AND H-16251 DATED 12-3-71

CRITICAL DOCUMENT

MPL NO. P52-1020

ACAD2K H1623909



"This document contains proprietary, confidential, and/or trade secret information of the subsidiaries of Southern Company or of third parties. It is intended for use only by employees of, or authorized contractors of, the subsidiaries of Southern Company. Unauthorized possession, use, distribution, copying, dissemination, or disclosure of any portion hereof is prohibited."

EDWIN I. HATCH NUCLEAR PLANT UNIT No. 1
REACTOR BUILDING
INSTRUMENT AIR SYSTEM P&ID
SHEET 9 OF 9

Version: 3.0	Date: 06/14/12
REVISED PER ABN-H02682, VER. 1.0	

				SHEET 9 OF 9			
				DOWN	REVERSE	LOCATION	ISSUE NUMBER
				KB	HEW	10-502	H-16239 SHEET 9
				DN	SLK		
					None		
W	JWL	RAW	SEC FOR	MICROFILM			
JWL	RAW	AAN	SEC FOR	MICROFILM			
				3.0			

131313

13

13

13

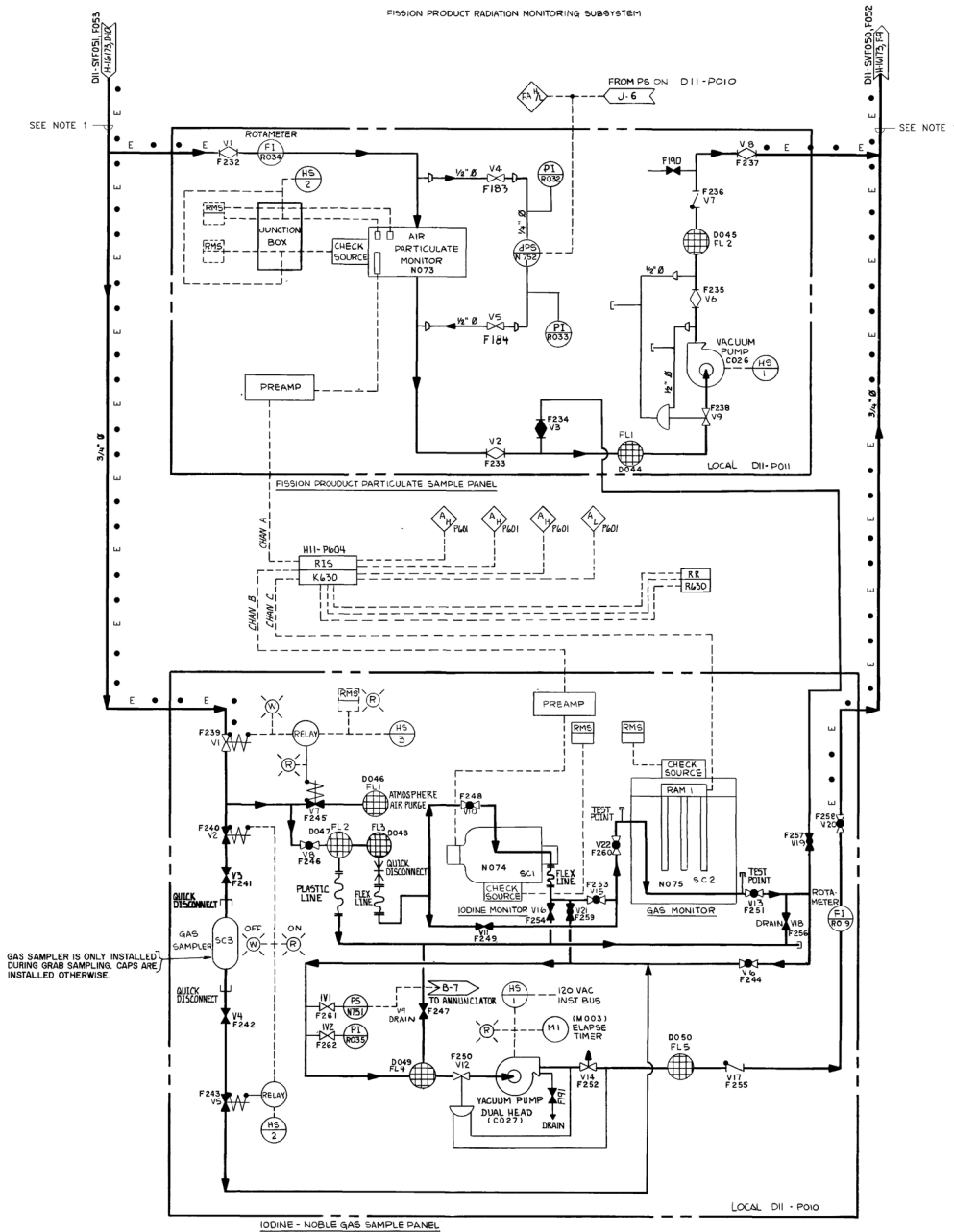


13

13

13

FISSION PRODUCT RADIATION MONITORING SUBSYSTEM



NOTES:
1. THIS LINE HEAT TRACED AND INSULATED WITH 1" OF FIBERGLASS INSULATION TO MAINTAIN A TEMP. OF 110° F.

FOR NOTES AND REFERENCES SEE H-16173, FISSION PRODUCTS MONITORING SYSTEM P-1D SHT NO. 1

CRITICAL DOCUMENT

MPL NO D11-1010

QVY2000 H16274

SOUTHERN COMPANY

"This document contains proprietary, confidential, and/or trade secret information of the subsidiaries of Southern Company or of third parties. It is intended for use only by employees of, or authorized contractors of, the subsidiaries of Southern Company. Unauthorized possession, use, distribution, copying, dissemination, or disclosure of any portion hereof is prohibited."

EDWIN I. HATCH NUCLEAR PLANT UNIT No. 1
FISSION PRODUCTS MONITORING
SYSTEM P-1D SHT. 2

Version: 11.0 Date: 11/6/14

REVISED PER:
ASN-103790, VER. 1.0

DESIGN
LKM

QTR DAB JTL

DESIGN
LKM

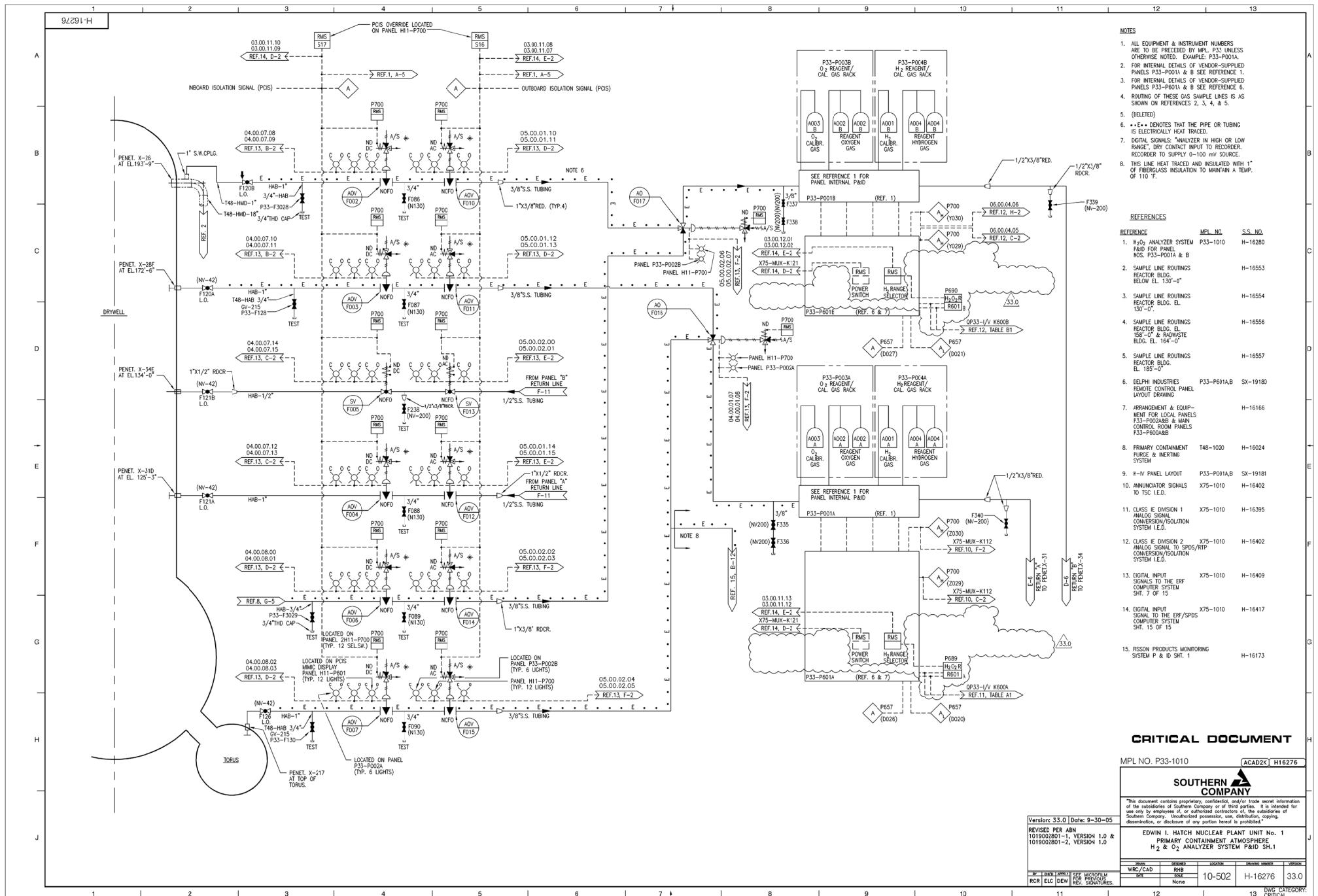
QTR DAB JTL

10-502

H-16274

11.0

DRAWING CATEGORY
CRITICAL



- NOTES**
1. ALL EQUIPMENT & INSTRUMENT NUMBERS ARE TO BE PRECEDED BY MPL P33 UNLESS OTHERWISE NOTED. EXAMPLE: P33-P001A.
 2. FOR INTERNAL DETAILS OF VENDOR-SUPPLIED PANELS P33-P001A & B SEE REFERENCE 1.
 3. FOR INTERNAL DETAILS OF VENDOR-SUPPLIED PANELS P33-P001A & B SEE REFERENCE 6.
 4. ROUTING OF THESE GAS SAMPLE LINES IS AS SHOWN ON REFERENCES 2, 3, 4, & 5.
 5. (DELETED)
 6. *** DENOTES THAT THE PIPE OR TUBING IS ELECTRICALLY HEAT TRACED.
 7. DIGITAL SIGNALS: ANALYZER IN HIGH OR LOW RANGE; DRY CONTACT INPUT TO RECORDER; RECORDER TO SUPPLY 0-100 mv SOURCE.
 8. THIS LINE HEAT TRACED AND INSULATED WITH 1" OF FIBERGLASS INSULATION TO MAINTAIN A TEMP. OF 110 F.

- REFERENCES**
- | REFERENCE | MPL NO. | S.S. NO. |
|--|--------------|----------|
| 1. H ₂ O ANALYZER SYSTEM P&ID FOR PANEL NOS. P33-P001A & B | P33-1010 | H-16280 |
| 2. SAMPLE LINE ROUTINGS REACTOR BLDG. BELOW EL. 130'-0" | | H-16553 |
| 3. SAMPLE LINE ROUTINGS REACTOR BLDG. EL. 130'-0" | | H-16554 |
| 4. SAMPLE LINE ROUTINGS REACTOR BLDG. EL. 150'-0" & INGESTION BLDG. EL. 164'-0" | | H-16556 |
| 5. SAMPLE LINE ROUTINGS REACTOR BLDG. EL. 185'-0" | | H-16557 |
| 6. DELPHI INDUSTRIES REMOTE CONTROL PANEL LAYOUT DRAWING | P33-P001A, B | SX-19180 |
| 7. ARRANGEMENT & EQUIPMENT FOR LOCAL PANELS P33-P002A & MAIN CONTROL ROOM PANELS P33-P002B | | H-16166 |
| 8. PRIMARY CONTAINMENT PURGE & INERTING SYSTEM | T48-1020 | H-16024 |
| 9. X-IV PANEL LAYOUT | P33-P001A, B | SX-19181 |
| 10. ANNUNCIATOR SIGNALS TO TSC I.E.D. | X75-1010 | H-16402 |
| 11. CLASS I.E. DIVISION 1 ANALOG SIGNAL TO SPDS/PP CONVERSION/SOLUTION SYSTEM I.E.D. | X75-1010 | H-16395 |
| 12. CLASS I.E. DIVISION 2 ANALOG SIGNAL TO SPDS/PP CONVERSION/SOLUTION SYSTEM I.E.D. | X75-1010 | H-16402 |
| 13. DIGITAL INPUT SIGNALS TO THE EFF COMPUTER SYSTEM SH. 7 OF 15 | X75-1010 | H-16409 |
| 14. DIGITAL INPUT SIGNAL TO THE EFF/SPDS COMPUTER SYSTEM SH. 15 OF 15 | X75-1010 | H-16417 |
| 15. FISSON PRODUCTS MONITORING SYSTEM P & ID SH. 1 | | H-16173 |

CRITICAL DOCUMENT

MPL NO. P33-1010 ACAD2K H16276

SOUTHERN COMPANY

"This document contains proprietary, confidential, and/or trade secret information of the subsidiaries of Southern Company or of third parties. It is intended for use only by employees of, or authorized contractors of, the subsidiaries of Southern Company. Uncontrolled possession, use, distribution, copying, dissemination, or disclosure of any portion hereof is prohibited."

EDWIN I. HATCH NUCLEAR PLANT UNIT No. 1
PRIMARY CONTAINMENT ATMOSPHERE
H₂ & O₂ ANALYZER SYSTEM P&ID SH.1

REV.	DATE	BY	CHKD.	APPD.	DESCRIPTION
1	10/18/00	WRC	WRC	WRC	ISSUED FOR CONSTRUCTION

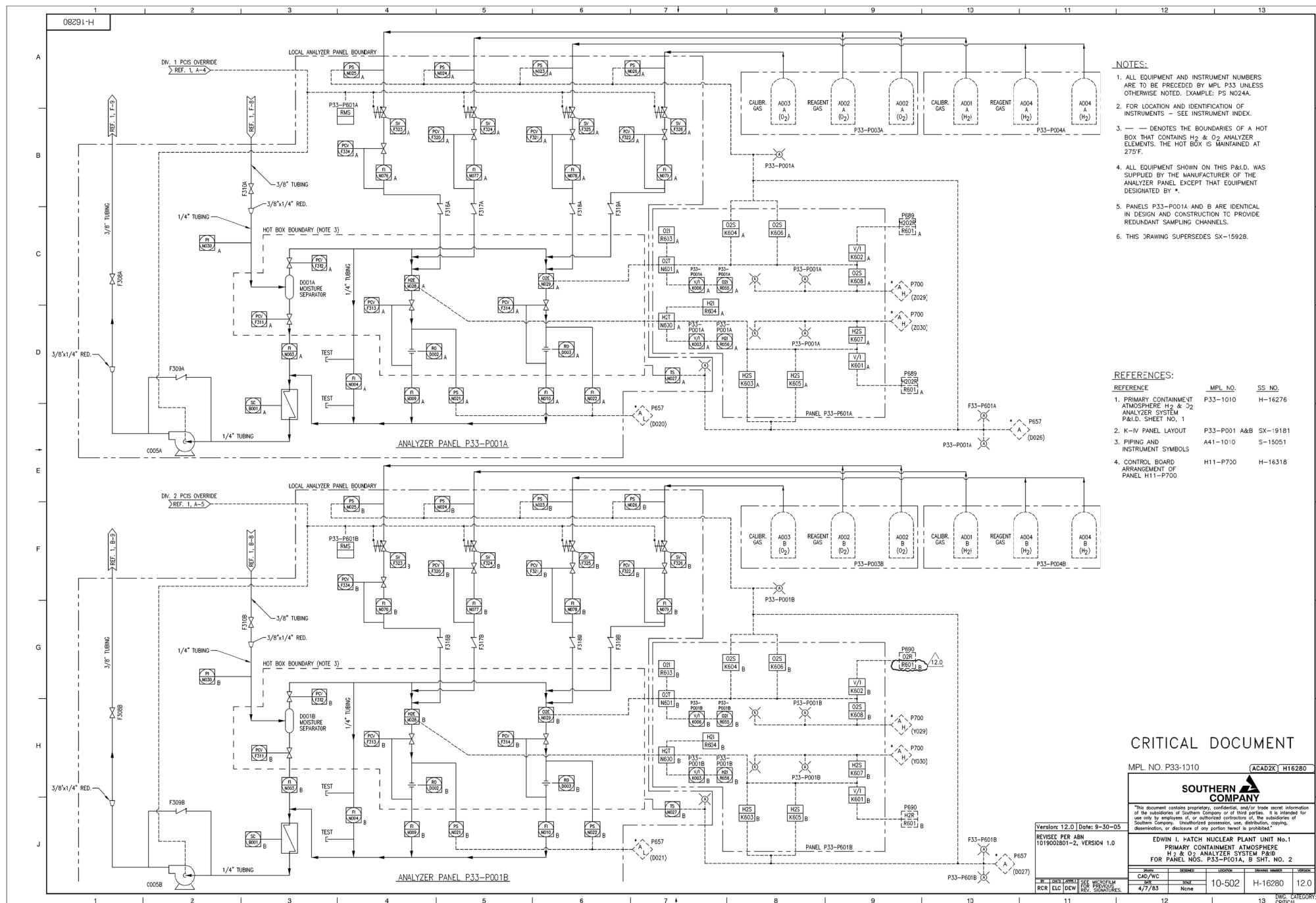
Version: 33.0 | Date: 9-30-05
REVISED PER AEN 1018002801-1, VERSION 1.0 & 1018002801-2, VERSION 1.0

WRC/CAD	DESIGN	LOCATION	ISSUED NUMBER	ORIGINAL
WRC	WRC	10-502	H-16276	33.0

RCR EIC DEW SEE WORKSHEET FOR SIGNATURES

DATE: 10-18-00

DWG. CATEGORY: CRITICAL



CRITICAL DOCUMENT

MPL. NO. P33-1010

ACAD2K H16280



"This document contains proprietary, confidential, and/or trade secret information of the subsidiaries of Southern Company or of third parties. It is intended for use only by employees of, or authorized contractors of, the subsidiaries of Southern Company. Unauthorized possession, use, distribution, copying, dissemination, or disclosure of any portion hereof is prohibited."

EDWIN I. HATCH NUCLEAR PLANT UNIT No.1
PRIMARY CONTAINMENT ATMOSPHERE
H₂ & O₂ ANALYZER SYSTEM P&ID
FOR PANEL NOS. P33-P001A, B SHT. NO. 2

NAME	DESIGNED	LOCATION	DRAWING NUMBER	VERSION
CAD/WC		10-502	H-16280	12.0
DATE	SHEET			
4/7/03	None			

Version: 12.0	Date: 9-30-1
REVISED PER ABN	

REVISED PER ABN
1010003801-2, VERSION 1.0

1019002801=2, VERSION 1.0

67

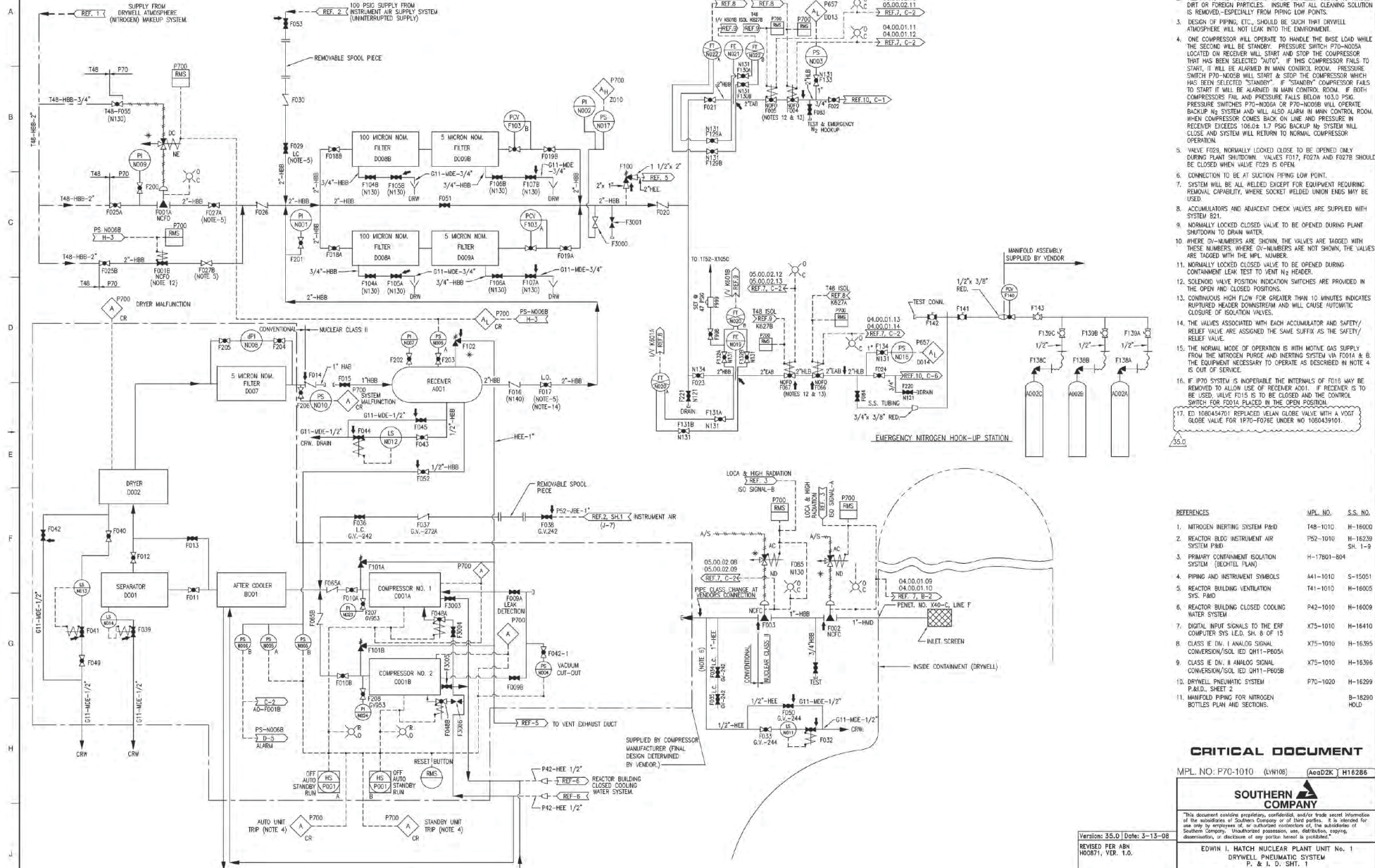
27)

BY	CHD	APR 1	SEE MICROFILM
			200 201 202

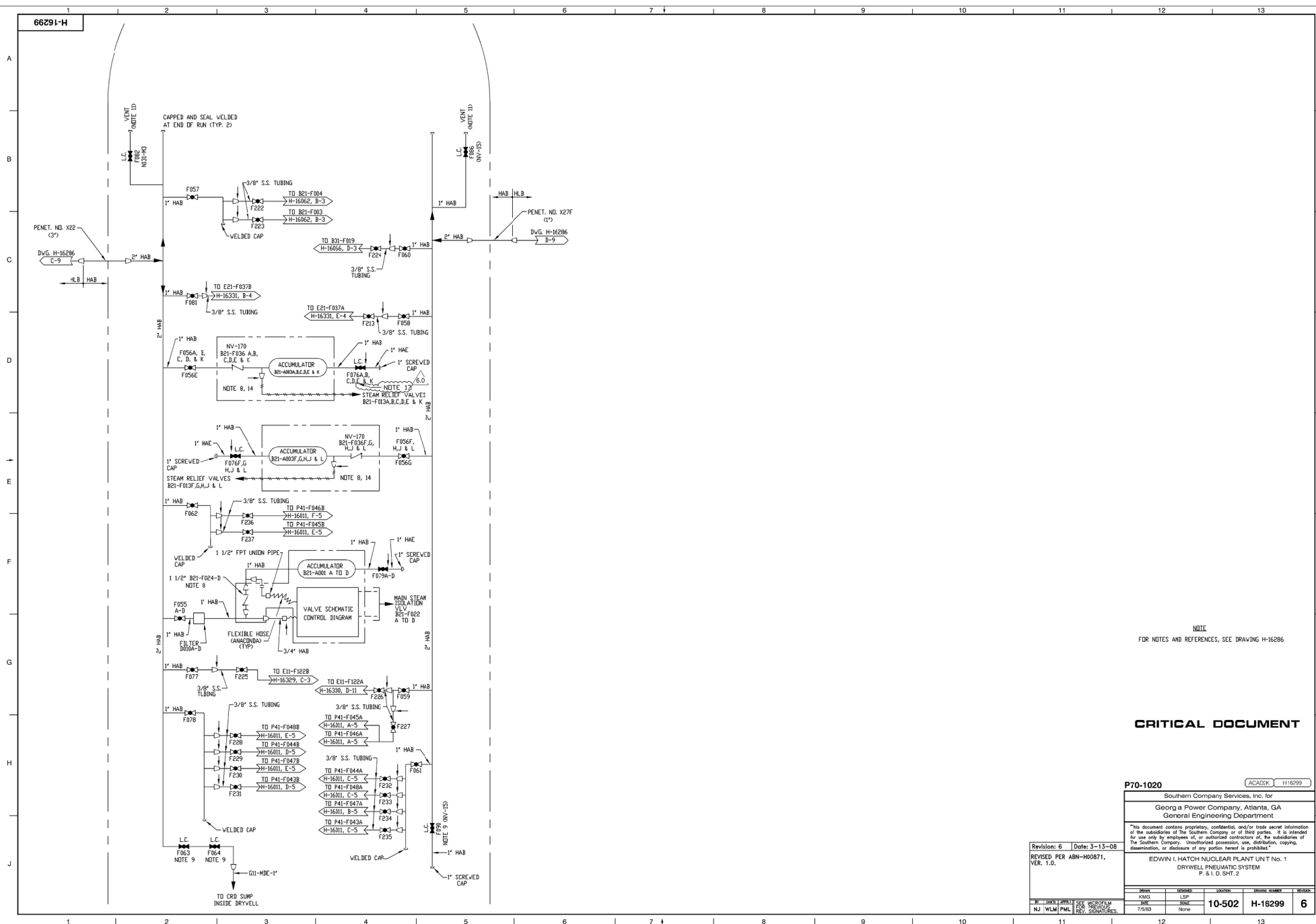
RCR	ELC	DEW	FOR PREVIOUS REV. SIGNATURE
-----	-----	-----	--------------------------------

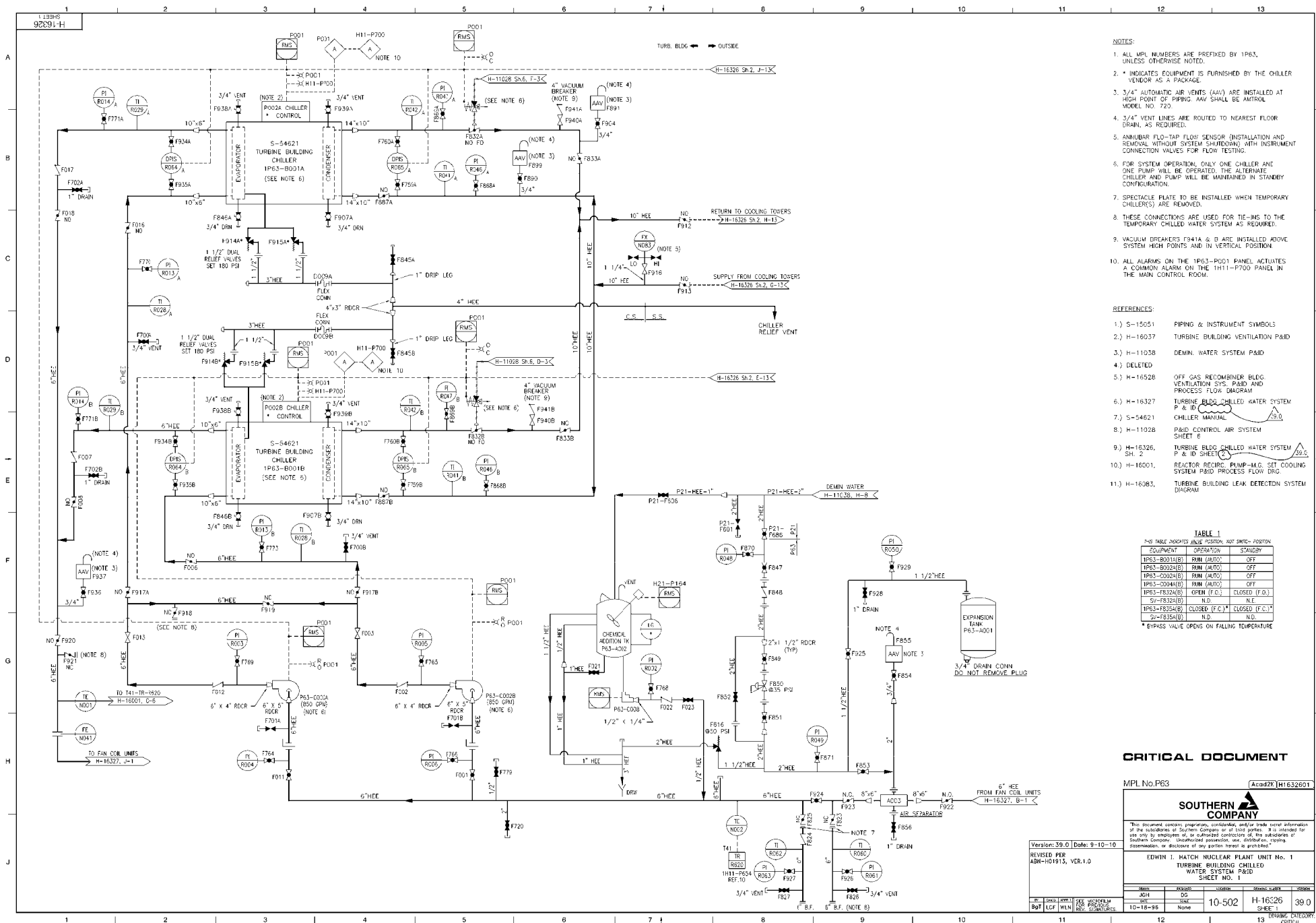
11

98291-H

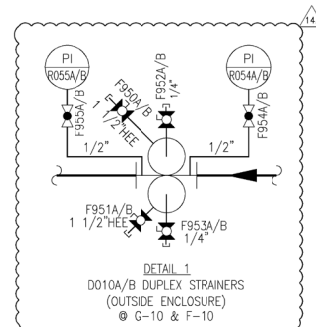
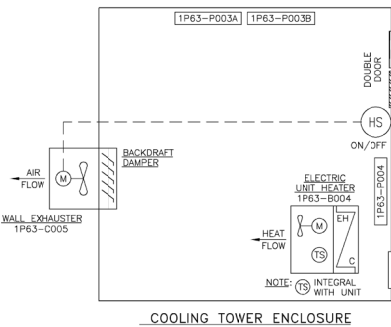
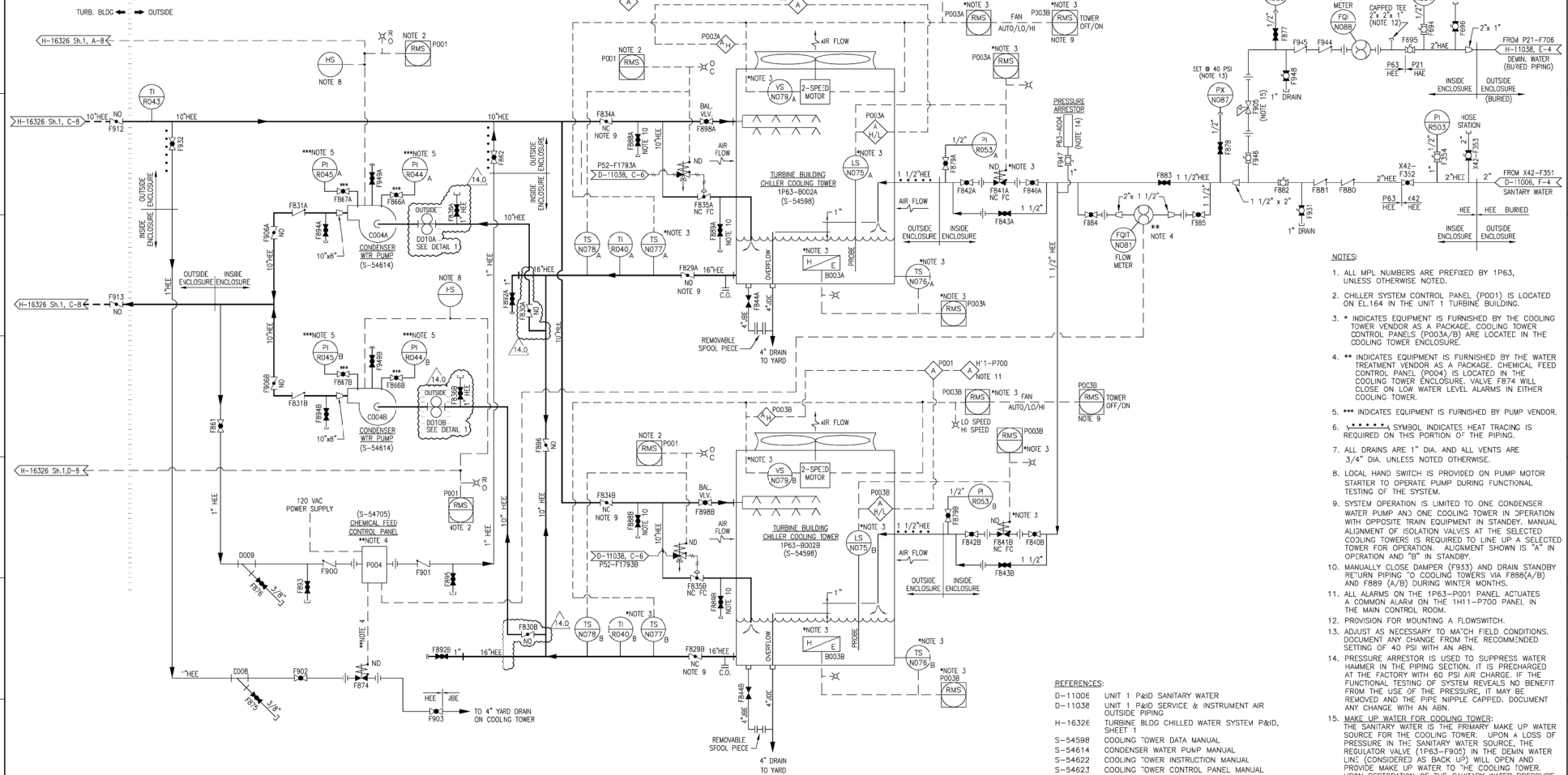


END CATEGORY





Z-T-S 9ZT91-H



CRITICAL DOCUMENT

MPL NO. P63

ACAD2K/H1632602

SOUTHERN
COMPANY

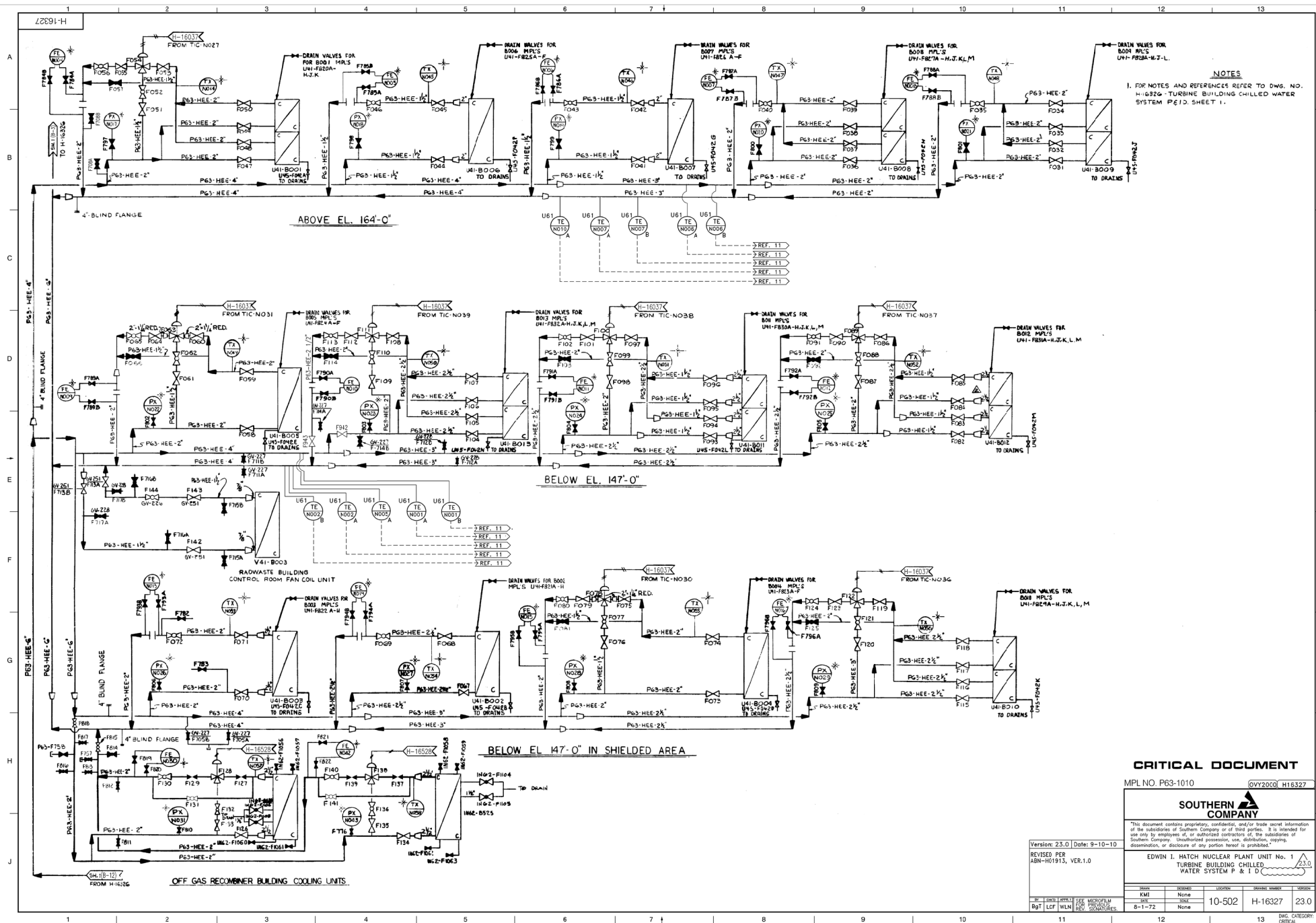
This document contains proprietary, confidential, and/or trade secret information of the subsidiaries of Southern Company or of third parties. It is intended for use only by employees of, or authorized contractors of, the subsidiaries of Southern Company. Unrestricted possession, use, distribution, copying, dissemination, or disclosure of any portion hereof is prohibited.

Version: 14.0 | Date: 6/11/2014
REVISED PER
SNC45153M003, Ver 2.0

EDWIN I. HATCH NUCLEAR PLANT UNIT No.1
TURBINE BUILDING CHILLED
WATER SYSTEM P&ID
SHEET NO. 2

DATE	REVISION	LOCATION	ISSUED NUMBER	VERSION
JUN 10	CO	10-502	None	14.0
4-24-98	None			

BY: JJP HBF JTL
DATE: 6/11/2014
CATEGORY: CRITICAL



CRITICAL DOCUMENT

MPL NO. P63-1010

QVY20CQ H16327

SOUTHERN
COMPAN

*This document contains proprietary, confidential, and/or trade secret information of the subsidiaries of Southern Company or of third parties. It is intended for use only by employees of, or authorized contractors of, the subsidiaries of Southern Company. Unauthorized possession, use, distribution, copying, dissemination, or disclosure of any portion hereof is prohibited.

EDWIN I. HATCH NUCLEAR PLANT UNIT No. 1
TURBINE BUILDING CHILLED

Version: 23.0	Date: 9-10-10
REVISED PER ABN-H01913, VER.1.0	

REVISÉ PER
ABN-H01913, VER.1.0

1999, 2000, 2001, 2002, 2003, 2004, 2005, 2006, 2007, 2008, 2009, 2010, 2011, 2012, 2013, 2014, 2015, 2016, 2017, 2018, 2019, 2020, 2021, 2022, 2023, 2024, 2025, 2026, 2027, 2028, 2029, 2030, 2031, 2032, 2033, 2034, 2035, 2036, 2037, 2038, 2039, 2040, 2041, 2042, 2043, 2044, 2045, 2046, 2047, 2048, 2049, 2050, 2051, 2052, 2053, 2054, 2055, 2056, 2057, 2058, 2059, 2060, 2061, 2062, 2063, 2064, 2065, 2066, 2067, 2068, 2069, 2070, 2071, 2072, 2073, 2074, 2075, 2076, 2077, 2078, 2079, 2080, 2081, 2082, 2083, 2084, 2085, 2086, 2087, 2088, 2089, 2090, 2091, 2092, 2093, 2094, 2095, 2096, 2097, 2098, 2099, 2100, 2101, 2102, 2103, 2104, 2105, 2106, 2107, 2108, 2109, 2110, 2111, 2112, 2113, 2114, 2115, 2116, 2117, 2118, 2119, 2120, 2121, 2122, 2123, 2124, 2125, 2126, 2127, 2128, 2129, 2130, 2131, 2132, 2133, 2134, 2135, 2136, 2137, 2138, 2139, 2140, 2141, 2142, 2143, 2144, 2145, 2146, 2147, 2148, 2149, 2150, 2151, 2152, 2153, 2154, 2155, 2156, 2157, 2158, 2159, 2160, 2161, 2162, 2163, 2164, 2165, 2166, 2167, 2168, 2169, 2170, 2171, 2172, 2173, 2174, 2175, 2176, 2177, 2178, 2179, 2180, 2181, 2182, 2183, 2184, 2185, 2186, 2187, 2188, 2189, 2190, 2191, 2192, 2193, 2194, 2195, 2196, 2197, 2198, 2199, 2200, 2201, 2202, 2203, 2204, 2205, 2206, 2207, 2208, 2209, 2210, 2211, 2212, 2213, 2214, 2215, 2216, 2217, 2218, 2219, 2220, 2221, 2222, 2223, 2224, 2225, 2226, 2227, 2228, 2229, 2230, 2231, 2232, 2233, 2234, 2235, 2236, 2237, 2238, 2239, 2240, 2241, 2242, 2243, 2244, 2245, 2246, 2247, 2248, 2249, 2250, 2251, 2252, 2253, 2254, 2255, 2256, 2257, 2258, 2259, 2260, 2261, 2262, 2263, 2264, 2265, 2266, 2267, 2268, 2269, 2270, 2271, 2272, 2273, 2274, 2275, 2276, 2277, 2278, 2279, 2280, 2281, 2282, 2283, 2284, 2285, 2286, 2287, 2288, 2289, 2290, 2291, 2292, 2293, 2294, 2295, 2296, 2297, 2298, 2299, 2300, 2301, 2302, 2303, 2304, 2305, 2306, 2307, 2308, 2309, 2310, 2311, 2312, 2313, 2314, 2315, 2316, 2317, 2318, 2319, 2320, 2321, 2322, 2323, 2324, 2325, 2326, 2327, 2328, 2329, 2330, 2331, 2332, 2333, 2334, 2335, 2336, 2337, 2338, 2339, 2340, 2341, 2342, 2343, 2344, 2345, 2346, 2347, 2348, 2349, 2350, 2351, 2352, 2353, 2354, 2355, 2356, 2357, 2358, 2359, 2360, 2361, 2362, 2363, 2364, 2365, 2366, 2367, 2368, 2369, 2370, 2371, 2372, 2373, 2374, 2375, 2376, 2377, 2378, 2379, 2380, 2381, 2382, 2383, 2384, 2385, 2386, 2387, 2388, 2389, 2390, 2391, 2392, 2393, 2394, 2395, 2396, 2397, 2398, 2399, 2400, 2401, 2402, 2403, 2404, 2405, 2406, 2407, 2408, 2409, 2410, 2411, 2412, 2413, 2414, 2415, 2416, 2417, 2418, 2419, 2420, 2421, 2422, 2423, 2424, 2425, 2426, 2427, 2428, 2429, 2430, 2431, 2432, 2433, 2434, 2435, 2436, 2437, 2438, 2439, 2440, 2441, 2442, 2443, 2444, 2445, 2446, 2447, 2448, 2449, 2450, 2451, 2452, 2453, 2454, 2455, 2456, 2457, 2458, 2459, 2460, 2461, 2462, 2463, 2464, 2465, 2466, 2467, 2468, 2469, 2470, 2471, 2472, 2473, 2474, 2475, 2476, 2477, 2478, 2479, 2480, 2481, 2482, 2483, 2484, 2485, 2486, 2487, 2488, 2489, 2490, 2491, 2492, 2493, 2494, 2495, 2496, 2497, 2498, 2499, 2500, 2501, 2502, 2503, 2504, 2505, 2506, 2507, 2508, 2509, 2510, 2511, 2512, 2513, 2514, 2515, 2516, 2517, 2518, 2519, 2520, 2521, 2522, 2523, 2524, 2525, 2526, 2527, 2528, 2529, 2530, 2531, 2532, 2533, 2534, 2535, 2536, 2537, 2538, 2539, 2540, 2541, 2542, 2543, 2544, 2545, 2546, 2547, 2548, 2549, 2550, 2551, 2552, 2553, 2554, 2555, 2556, 2557, 2558, 2559, 2560, 2561, 2562, 2563, 2564, 2565, 2566, 2567, 2568, 2569, 2570, 2571, 2572, 2573, 2574, 2575, 2576, 2577, 2578, 2579, 2580, 2581, 2582, 2583, 2584, 2585, 2586, 2587, 2588, 2589, 2590, 2591, 2592, 2593, 2594, 2595, 2596, 2597, 2598, 2599, 2600, 2601, 2602, 2603, 2604, 2605, 2606, 2607, 2608, 2609, 2610, 2611, 2612, 2613, 2614, 2615, 2616, 2617, 2618, 2619, 2620, 2621, 2622, 2623, 2624, 2625, 2626, 2627, 2628, 2629, 2630, 2631, 2632, 2633, 2634, 2635, 2636, 2637, 2638, 2639, 2640, 2641, 2642, 2643, 2644, 2645, 2646, 2647, 2648, 2649, 2650, 2651, 2652, 2653, 2654, 2655, 2656, 2657, 2658, 2659, 2660, 2661, 2662, 2663, 2664, 2665, 2666, 2667, 2668, 2669, 2670, 2671, 2672, 2673, 2674, 2675, 2676, 2677, 2678, 2679, 2680, 26

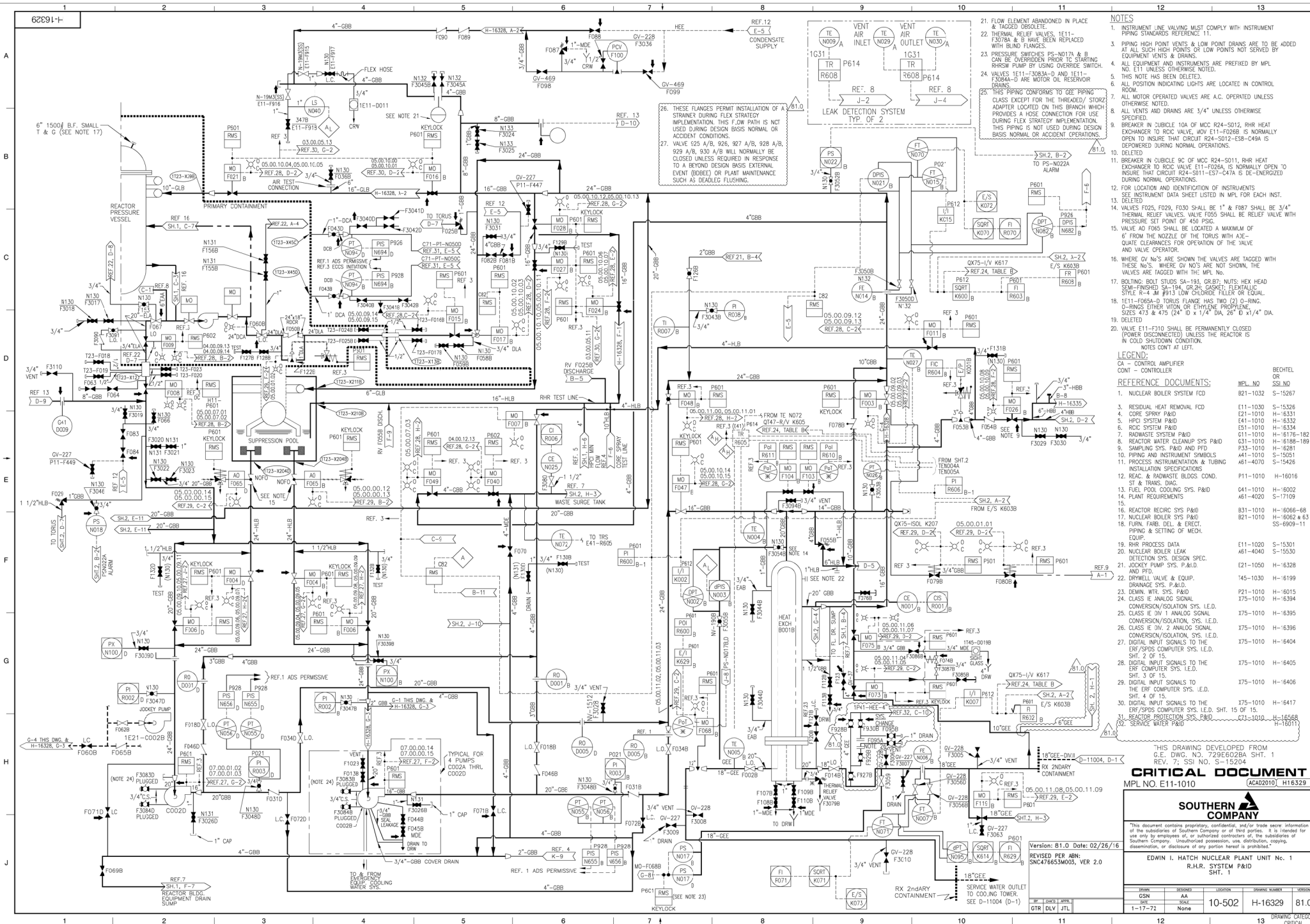
1998, 1999, 2000, 2001, 2002, 2003, 2004, 2005, 2006, 2007, 2008, 2009, 2010, 2011, 2012, 2013, 2014, 2015, 2016, 2017, 2018, 2019, 2020, 2021, 2022, 2023, 2024, 2025, 2026, 2027, 2028, 2029, 2030, 2031, 2032, 2033, 2034, 2035, 2036, 2037, 2038, 2039, 2040, 2041, 2042, 2043, 2044, 2045, 2046, 2047, 2048, 2049, 2050, 2051, 2052, 2053, 2054, 2055, 2056, 2057, 2058, 2059, 2060, 2061, 2062, 2063, 2064, 2065, 2066, 2067, 2068, 2069, 2070, 2071, 2072, 2073, 2074, 2075, 2076, 2077, 2078, 2079, 2080, 2081, 2082, 2083, 2084, 2085, 2086, 2087, 2088, 2089, 2090, 2091, 2092, 2093, 2094, 2095, 2096, 2097, 2098, 2099, 2100, 2101, 2102, 2103, 2104, 2105, 2106, 2107, 2108, 2109, 2110, 2111, 2112, 2113, 2114, 2115, 2116, 2117, 2118, 2119, 2120, 2121, 2122, 2123, 2124, 2125, 2126, 2127, 2128, 2129, 2130, 2131, 2132, 2133, 2134, 2135, 2136, 2137, 2138, 2139, 2140, 2141, 2142, 2143, 2144, 2145, 2146, 2147, 2148, 2149, 2150, 2151, 2152, 2153, 2154, 2155, 2156, 2157, 2158, 2159, 2160, 2161, 2162, 2163, 2164, 2165, 2166, 2167, 2168, 2169, 2170, 2171, 2172, 2173, 2174, 2175, 2176, 2177, 2178, 2179, 2180, 2181, 2182, 2183, 2184, 2185, 2186, 2187, 2188, 2189, 2190, 2191, 2192, 2193, 2194, 2195, 2196, 2197, 2198, 2199, 2200, 2201, 2202, 2203, 2204, 2205, 2206, 2207, 2208, 2209, 2210, 2211, 2212, 2213, 2214, 2215, 2216, 2217, 2218, 2219, 2220, 2221, 2222, 2223, 2224, 2225, 2226, 2227, 2228, 2229, 2230, 2231, 2232, 2233, 2234, 2235, 2236, 2237, 2238, 2239, 2240, 2241, 2242, 2243, 2244, 2245, 2246, 2247, 2248, 2249, 2250, 2251, 2252, 2253, 2254, 2255, 2256, 2257, 2258, 2259, 2260, 2261, 2262, 2263, 2264, 2265, 2266, 2267, 2268, 2269, 2270, 2271, 2272, 2273, 2274, 2275, 2276, 2277, 2278, 2279, 2280, 2281, 2282, 2283, 2284, 2285, 2286, 2287, 2288, 2289, 2290, 2291, 2292, 2293, 2294, 2295, 2296, 2297, 2298, 2299, 2300, 2301, 2302, 2303, 2304, 2305, 2306, 2307, 2308, 2309, 2310, 2311, 2312, 2313, 2314, 2315, 2316, 2317, 2318, 2319, 2320, 2321, 2322, 2323, 2324, 2325, 2326, 2327, 2328, 2329, 2330, 2331, 2332, 2333, 2334, 2335, 2336, 2337, 2338, 2339, 2340, 2341, 2342, 2343, 2344, 2345, 2346, 2347, 2348, 2349, 2350, 2351, 2352, 2353, 2354, 2355, 2356, 2357, 2358, 2359, 2360, 2361, 2362, 2363, 2364, 2365, 2366, 2367, 2368, 2369, 2370, 2371, 2372, 2373, 2374, 2375, 2376, 2377, 2378, 2379, 2380, 2381, 2382, 2383, 2384, 2385, 2386, 2387, 2388, 2389, 2390, 2391, 2392, 2393, 2394, 2395, 2396, 2397, 2398, 2399, 2400, 2401, 2402, 2403, 2404, 2405, 2406, 2407, 2408, 2409, 2410, 2411, 2412, 2413, 2414, 2415, 2416, 2417, 2418, 2419, 2420, 2421, 2422, 2423, 2424, 2425, 2426, 2427, 2428, 2429, 2430, 2431, 2432, 2433, 2434, 2435, 2436, 2437, 2438, 2439, 2440, 2441, 2442, 2443, 2444, 2445, 2446, 2447, 2448, 2449, 2450, 2451, 2452, 2453, 2454, 2455, 2456, 2457, 2458, 2459, 2460, 2461, 2462, 2463, 2464, 2465, 2466, 2467, 2468, 2469, 2470, 2471, 2472, 2473, 2474, 2475, 2476, 2477, 2478, 2479, 2480, 2481, 2482, 2483, 2484, 2485, 2486, 2487, 2488, 2489, 2490, 2491, 2492, 2493, 2494, 2495, 2496, 2497, 2498, 2499, 2500, 2501, 2502, 2503, 2504, 2505, 2506, 2507, 2508, 2509, 2510, 2511, 2512, 2513, 2514, 2515, 2516, 2517, 2518, 2519, 2520, 2521, 2522, 2523, 2524, 2525, 2526, 2527, 2528, 2529, 2530, 2531, 2532, 2533, 2534, 2535, 2536, 2537, 2538, 2539, 2540, 2541, 2542, 2543, 2544, 2545, 2546, 2547, 2548, 2549, 2550, 2551, 2552, 2553, 2554, 2555, 2556, 2557, 2558, 2559, 2560, 2561, 2562, 2563, 2564, 2565, 2566, 2567, 2568, 2569, 2570, 2571, 2572, 2573, 2574, 2575, 2576, 2577, 2578, 2579, 2580, 2581, 2582, 2583, 2584, 2585, 2586, 2587, 2588, 2589, 2590, 2591, 2592, 2593, 2594, 2595, 2596, 2597, 2598, 2599, 2600, 2601, 2602, 2603, 2604, 2605, 2606, 2607, 2608, 2609, 2610, 2611, 2612, 2613, 2614, 2615, 2616, 2617, 2618, 2619, 2620, 2621, 2622, 2623, 2624, 2625, 2626, 2627, 2628, 2629, 2630, 2631, 2632, 2633, 2634, 2635, 2636, 2637, 2638, 2639, 2640, 2641, 2642, 2643, 2644, 2645, 2646, 2647, 2648, 2649, 2650, 2651, 2652, 2653, 2654, 2655, 2656, 2657, 2658, 2659, 2660, 2661, 2662, 2663, 2664, 2665, 2666, 2667, 2668, 2669, 2670, 2671, 2672, 2673, 2674, 2675, 2676, 2677, 2678, 2679, 26

in	each	also	are
----	------	------	-----

PHONE	ORGANIZATION	LOCATION	ADDRESS	STATUS
KMI	None	10,500	11,100	00

DATE	BOOK	10-502	H-16327	23.0
8-1-72	None			

12	13	DWG. CATEGORY CRITICAL
----	----	---------------------------



- NOTES
1. INSTRUMENT LINE VALVING MUST COMPLY WITH INSTRUMENT PIPING STANDARDS REFERENCE 11.
 2. THERMAL RELIEF VALVES, 1E11-13078A & B HAVE BEEN REPLACED WITH BLIND FLANGES.
 3. PRESSURE SWITCHES PS-N0174 & B CAN BE OVERRIDDEN PRIOR TO STARTING RUSH PUMP BY USING OVERRIDE SWITCH.
 4. THIS NOTE HAS BEEN DELETED.
 5. ALL POSITION INDICATING LIGHTS ARE LOCATED IN CONTROL ROOM.
 6. ALL MOTOR OPERATED VALVES ARE A.C. OPERATED UNLESS OTHERWISE NOTED.
 7. ALL VENTS AND DRAINS ARE 3/4" UNLESS OTHERWISE SPECIFIED.
 8. BREAKERS IN CUBICLE 10A OF MCC R24-S012, RHR HEAT EXCHANGER TO RCC VALVE, MOV E11-F0268 IS NORMALLY OPEN TO INSURE THAT CIRCUIT R24-S012-E38-C49A IS DE-ENERGIZED DURING NORMAL OPERATIONS.
 9. DELETED.
 10. BREAKER IN CUBICLE 9C OF MCC R24-S011, RHR HEAT EXCHANGER TO RCC VALVE E11-F0268, IS NORMALLY OPEN TO INSURE THAT CIRCUIT R24-S011-E57-C47A IS DE-ENERGIZED DURING NORMAL OPERATIONS.
 11. FOR LOCATION AND IDENTIFICATION OF INSTRUMENTS SEE INSTRUMENT DATA SHEET LISTED IN MPL FOR EACH INST.
 12. DELETED.
 13. VALVES F025, F029, F030 SHALL BE 1" & F087 SHALL BE 3/4" THERMAL RELIEF VALVES. VALVE F055 SHALL BE RELIEF VALVE WITH PRESSURE SET POINT OF 450 PSIG.
 14. VALVE AD F085 SHALL BE LOCATED A MAXIMUM OF 6' FROM THE NOZZLE OF THE TORUS WITH ADEQUATE CLEARANCES FOR OPERATION OF THE VALVE AND VALVE OPERATOR.
 15. WHERE GV NO'S ARE SHOWN THE VALVES ARE TAGGED WITH THESE NO'S. WHERE GV NO'S ARE NOT SHOWN, THE VALVES ARE TAGGED WITH THE MPL NO.
 16. BRITING BODY: STAINLESS STEEL; HEX HEAD SEMI-FINISHED SA-194, GR.2H GASKET; FLEXITAIL; RING R-4 J-M #913 10W CHLORIDE FILLER OR EQUAL.
 17. 1E11-F0268-D TORUS FLANGE HAS TWO (2) 1/2" DIA. O-RINGS EITHER VITON OR ETHYLENE PROPYLENE, SIZES 473 & 475 (2 1/2" x 1/4" DIA, 26" D x 1/4" DIA).
 18. DELETED.
 19. VALVE E11-F310 SHALL BE PERMANENTLY CLOSED (POWER DISCONNECTED) UNLESS THE REACTOR IS IN COLD SHUTDOWN CONDITION.

- LEGEND:
- CA - CONTROL AMPLIFIER
 - CON - CONTROLLER
- REFERENCE DOCUMENTS:
- | NO. | DESCRIPTION | MPL NO. | REV. |
|-----|--|-----------|---------|
| 1. | NUCLEAR BOILER SYSTEM FCD | B21-1032 | S-15287 |
| 2. | RESIDUAL HEAT REMOVAL FCD | E11-1030 | S-15326 |
| 3. | CORE SPRAY P&ID | E21-1010 | H-6331 |
| 4. | HPO SYSTEM P&ID | E41-1010 | H-6332 |
| 5. | RCC SYSTEM P&ID | E51-1010 | H-6334 |
| 6. | ROD SYSTEM P&ID | E61-1010 | H-6335 |
| 7. | ROD SYSTEM P&ID | E71-1010 | H-6336 |
| 8. | REACTOR WATER CLEANUP SYS P&ID | E81-1010 | H-6337 |
| 9. | SAMPLING SYS P&ID | E91-1010 | H-6338 |
| 10. | PIPING INSTRUMENTATION SYMBOLS | E101-1010 | H-6339 |
| 11. | PROCESS INSTRUMENTATION & TUBING INSTALLATION SPECIFICATIONS | E111-1010 | H-6340 |
| 12. | REAC. & RADWASTE BLDGS. COND. ST. & TRANS. DIAG. | E121-1010 | H-6341 |
| 13. | FUEL POOL COOLING SYS. P&ID | E131-1010 | H-6342 |
| 14. | PLANT REQUIREMENTS | E141-1010 | H-6343 |
| 15. | REACTOR RECIRC SYS P&ID | E151-1010 | H-6344 |
| 16. | NUCLEAR BOILER SYS P&ID | E161-1010 | H-6345 |
| 17. | TURB. FUEL DEL. & EXHAUST PIPING & SETTING OF MED. EQUIP. | E171-1010 | H-6346 |
| 18. | RHR PROCESS DATA | E181-1010 | H-6347 |
| 19. | NUCLEAR BOILER LEAK DETECTION SYS. DESIGN SPEC. | E191-1010 | H-6348 |
| 20. | JOCKEY PUMP SYS. P&ID | E201-1010 | H-6349 |
| 21. | DRYING VALVE & EQUIP. REQUIREMENTS | E211-1010 | H-6350 |
| 22. | DEMIN. WTR. SYS. P&ID | E221-1010 | H-6351 |
| 23. | CLASS E ANALOG SIGNAL CONVERSION/ISOLATION SYS. I.E.D. | E231-1010 | H-6352 |
| 24. | CLASS E DIV 1 ANALOG SIGNAL CONVERSION/ISOLATION SYS. I.E.D. | E241-1010 | H-6353 |
| 25. | DIGITAL INPUT SIGNALS TO THE DIV 1/2 COMPUTER SYS. I.E.D. | E251-1010 | H-6354 |
| 26. | DIGITAL INPUT SIGNALS TO THE DIV 1/2 COMPUTER SYS. I.E.D. | E261-1010 | H-6355 |
| 27. | DIGITAL INPUT SIGNALS TO THE DIV 1/2 COMPUTER SYS. I.E.D. | E271-1010 | H-6356 |
| 28. | DIGITAL INPUT SIGNALS TO THE DIV 1/2 COMPUTER SYS. I.E.D. | E281-1010 | H-6357 |
| 29. | DIGITAL INPUT SIGNALS TO THE DIV 1/2 COMPUTER SYS. I.E.D. | E291-1010 | H-6358 |
| 30. | DIGITAL INPUT SIGNALS TO THE DIV 1/2 COMPUTER SYS. I.E.D. | E301-1010 | H-6359 |
| 31. | REACTOR PROTECTION SYS. P&ID | E311-1010 | H-6360 |
| 32. | SERVICE WATER P&ID | E321-1010 | H-6361 |

THIS DRAWING DEVELOPED FROM G.E. D.W. NO. 7296602BA SHT. 1 REV. 7; SSI NO. S-15320

CRITICAL DOCUMENT
MPL NO. E11-1010

SOUTHERN COMPANY

"This document contains proprietary, confidential, and/or trade name information of the subsidiaries of Southern Company or of third parties. It is intended for use only by employees of, or authorized contractors of, the subsidiaries of Southern Company. Unauthorized possession, use, distribution, copying, dissemination, or disclosure of any portion hereof is prohibited."

EDWIN L. HATCH NUCLEAR PLANT UNIT No. 1
R.H.R. SYSTEM P&ID
SHT. 1

Version: 81.0 Date: 02/26/16
REVISED PER ABN
SNC476653M003, VER 2.0

REX 2ndARY CONTAINMENT
TO COOLING TOWER
TO FROM REACTOR BLDG. EQUIPMENT DRAIN SUMP

TO FROM REACTOR BLDG. EQUIPMENT DRAIN SUMP

TO FROM REACTOR BLDG. EQUIPMENT DRAIN SUMP

TO FROM REACTOR BLDG. EQUIPMENT DRAIN SUMP

TO FROM REACTOR BLDG. EQUIPMENT DRAIN SUMP

TO FROM REACTOR BLDG. EQUIPMENT DRAIN SUMP

TO FROM REACTOR BLDG. EQUIPMENT DRAIN SUMP

TO FROM REACTOR BLDG. EQUIPMENT DRAIN SUMP

TO FROM REACTOR BLDG. EQUIPMENT DRAIN SUMP

TO FROM REACTOR BLDG. EQUIPMENT DRAIN SUMP

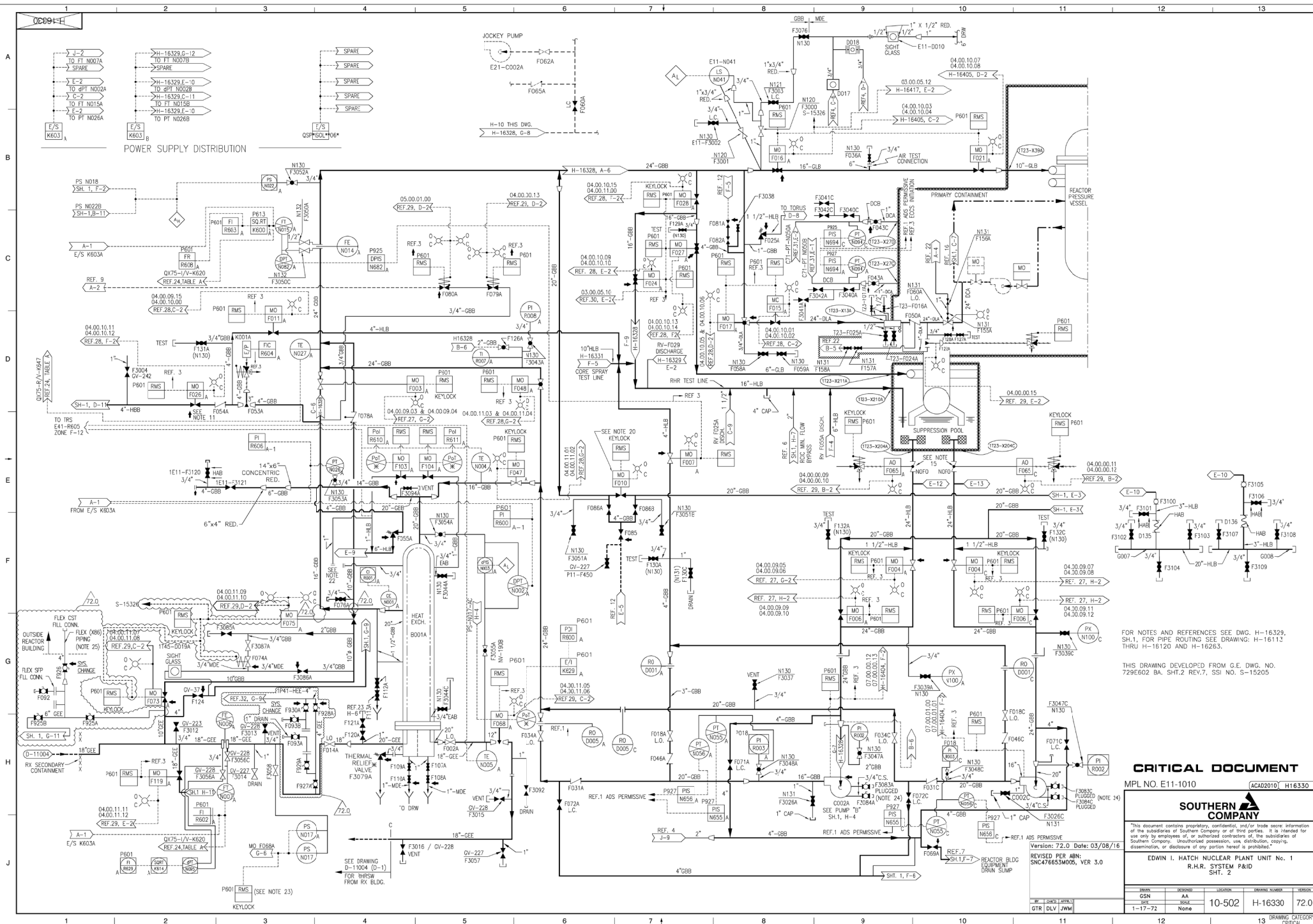
TO FROM REACTOR BLDG. EQUIPMENT DRAIN SUMP

TO FROM REACTOR BLDG. EQUIPMENT DRAIN SUMP

TO FROM REACTOR BLDG. EQUIPMENT DRAIN SUMP

TO FROM REACTOR BLDG. EQUIPMENT DRAIN SUMP

TO FROM REACTOR BLDG. EQUIPMENT DRAIN SUMP



FOR NOTES AND REFERENCES SEE DWG. H-16329, SH-1, FOR PIPE ROUTING SEE DRAWING: H-16112 THRU H-16120 AND H-16263.

THIS DRAWING DEVELOPED FROM G.E. DWG. NO. 729E602 BA. SH-2 REV.7, SSI NO. S-15205

CRITICAL DOCUMENT
MPL NO. E11-1010 ACAD2010 H16330

SOUTHERN COMPANY

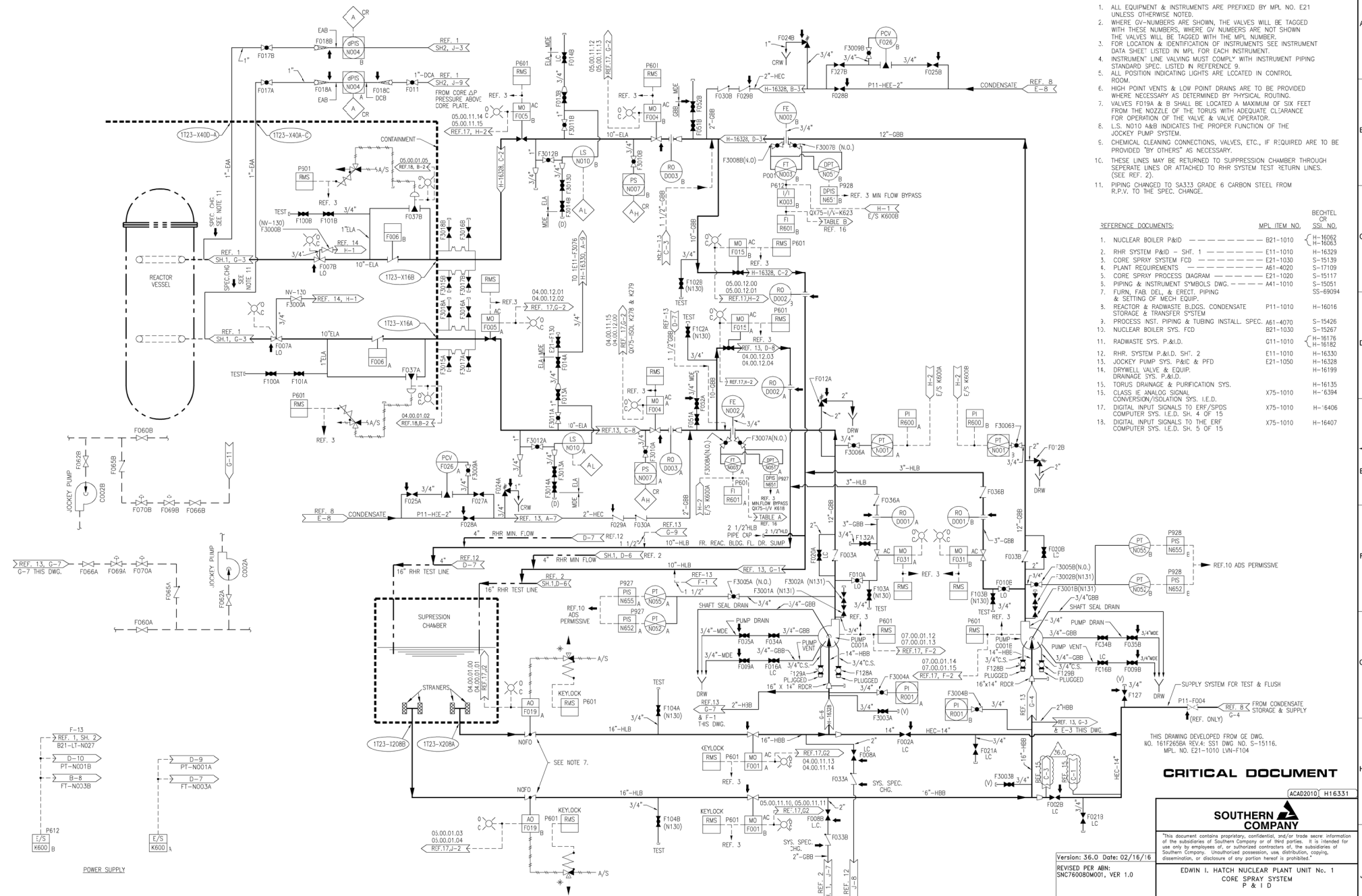
"This document contains proprietary, confidential, and/or trade secret information of the subsidiaries of Southern Company or of third parties. It is intended for use only by employees of, or authorized contractors of, the subsidiaries of Southern Company. Unauthorized possession, use, distribution, copying, dissemination, or disclosure of any portion hereof is prohibited."

EDWIN I. HATCH NUCLEAR PLANT UNIT No. 1
R.H.R. SYSTEM P&ID
SHT. 2

REV	DATE	BY	CHKD	APP'D	LOCATION	DESCRIPTION	REVISION
1	1-17-72	None	None	None	10-502	H-16330	72.0

DRAWING CATEGORY: CRITICAL

16391-H



ACAD2010 H16331

SOUTHERN COMPANY

"This document contains proprietary, confidential, and/or trade secret information of the subsidiaries of Southern Company or of third parties. It is intended for use only by employees of, or authorized contractors of, the subsidiaries of Southern Company. Unauthorized possession, use, distribution, copying, dissemination, or disclosure of any portion hereof is prohibited."

EDWIN I. HATCH NUCLEAR PLANT UNIT No. 1
CORE SPRAY SYSTEM
P & I D

ISSUED	REVISION	LOCATION	ISSUED NUMBER	REVISION
GSM	AA	10-502	H-16331	36.0
DATE	None	1-14-72		

DRAWING CATEGORY: CRITICAL

