

→ (DRN 01-419)

Figure 9.3-1, Sheet 1 has been incorporated by reference in accordance with NEI 98-03.

Figure information can be found in Drawing G-152, Sheet 1.

← (DRN 01-419)

→ (DRN 01-419)

Figure 9.3-1, Sheet 2 has been incorporated by reference in accordance with NEI 98-03.

Figure information can be found in Drawing G-152, Sheet 2.

← (DRN 01-419)

→ (DRN 01-419)

Figure 9.3-1, Sheet 3 has been incorporated by reference in accordance with NEI 98-03.

Figure information can be found in Drawing G-152, Sheet 3.

← (DRN 01-419)

→ (DRN 01-419)

Figure 9.3-1, Sheet 4 has been incorporated by reference in accordance with NEI 98-03.

Figure information can be found in Drawing G-152, Sheet 4.

← (DRN 01-419)

→ (DRN 01-419)

Figure 9.3-1, Sheet 5 has been incorporated by reference in accordance with NEI 98-03.

Figure information can be found in Drawing G-152, Sheet 5.

← (DRN 01-419)

WSES-FSAR-UNIT-3

→(EC-8435, R307)

Figure 9.3-1, Sheet 6 has been incorporated by reference in accordance with NEI 98-03

Figure information can be found on Drawing G-152, Sheet 6.

←(EC-8435, R307)

→ (DRN 01-419)

Figure 9.3-1, Sheet 7 has been incorporated by reference in accordance with NEI 98-03.

Figure information can be found in Drawing G-152, Sheet 7.

← (DRN 01-419)

→ (DRN 01-419)

Figure 9.3-1, Sheet 8 has been incorporated by reference in accordance with NEI 98-03.

Figure information can be found in Drawing G-157.

← (DRN 01-419)

Security-Related Information
Figure Withheld Under 10 CFR 2.390

REVISION 14A (03/06)

WATERFORD STEAM
ELECTRIC STATION #3

FLOW DIAGRAM SERVICE
& INSTRUMENT AIR SYSTEMS
SHEET 9 OF 9

REF DWG: G-152 SH.9 (REV. 3)

FIGURE 9.3-1

WSES-FSAR-UNIT-3

→(DRN 02-1052, R13-B)

Figure 9.3-2, Sht. 1 has been incorporated by reference in accordance with NEI 98-03.

For current Figure 9.3-2, Sht. 1 information refer to Drawing G-162 Sht. 1.

←(DRN 02-1052, R13-B)

→ (DRN 01-419)

Figure 9.3-2, Sheet 2 has been incorporated by reference in accordance with NEI 98-03.

Figure information can be found in Drawing G-162, Sheet 2.

← (DRN 01-419)

→ (DRN 01-419)

Figure 9.3-2, Sheet 3 has been incorporated by reference in accordance with NEI 98-03.

Figure information can be found in Drawing G-162, Sheet 3.

← (DRN 01-419)

→ (DRN 01-419)

Figure 9.3-2, Sheet 4 has been incorporated by reference in accordance with NEI 98-03.

Figure information can be found in Drawing G-162, Sheet 4.

← (DRN 01-419)

Security-Related Information
Figure Withheld Under 10 CFR 2.390

WATERFORD STEAM
ELECTRIC STATION *3

FLOW DIAGRAM
WASTE GAS ANALYZER SYSTEM
SHEET 5 OF 6
FIGURE 9.3-2

REF DWG: G-162 SH5 (REV 7)

→ (DRN 01-1392)

Figure 9.3-2, Sheet 6 of 6 has been incorporated by reference in accordance with NEI 98-03.

For current Figure information refer to Drawing G-162, Sheet 6.

← (DRN 01-1392)

→ (DRN 01-419)

Figure 9.3-3, Sheet 1 has been incorporated by reference in accordance with NEI 98-03.

Figure information can be found in Drawing G-173, Sheet 1.

← (DRN 01-419)

Security-Related Information
Figure Withheld Under 10 CFR 2.390

5/961

WATERFORD STEAM
ELECTRIC STATION •3

FLOW DIAGRAM SUMP PUMP SYSTEM
REACTOR AUXILIARY BUILDING
SHEET 2 OF 3
FIGURE 9.3-3

REF DWG: G-173 SH2 (REV5)

→ (DRN 01-419)

Figure 9.3-3, Sheet 3 has been incorporated by reference in accordance with NEI 98-03.

Figure information can be found in Drawing G-173, Sheet 3.

← (DRN 01-419)

Security-Related Information
Figure Withheld Under 10 CFR 2.390

REVISION 4 02/00

Waterford Steam Electric Station #3

**REACTOR, TURBINE & FUEL HANDLING
BUILDING DRAINAGE SYSTEMS**

FIGURE 9.3-4

Security-Related Information
Figure Withheld Under 10 CFR 2.390

REVISION 4 (12/90)

Waterford Steam Electric Station #3

**REACTOR AUXILIARY BUILDING
DRAINAGE SYSTEMS**

FIGURE 9.3-5

→ (DRN 01-419)

Figure 9.3-6, Sheet 1 has been incorporated by reference in accordance with NEI 98-03.

Figure information can be found in Drawing G-168, Sheet 1.

← (DRN 01-419)

→ (DRN 01-419)

Figure 9.3-6, Sheet 2 has been incorporated by reference in accordance with NEI 98-03.

Figure information can be found in Drawing G-168, Sheet 2.

← (DRN 01-419)

→ (DRN 01-419)

Figure 9.3-6, Sheet 3 has been incorporated by reference in accordance with NEI 98-03.

Figure information can be found in Drawing G-168, Sheet 3.

← (DRN 01-419)

→(DRN 03-2063, R14)

THIS FIGURE HAS BEEN DELETED

←(DRN 03-2063, R14)

Revision 14 (12/05)

LOUISIANA
POWER & LIGHT CO.
Waterford Steam
Electric Station #3

NORMAL COOLDOWN ALL SYSTEM
COMPONENTS OPERATING

FIGURE
9.3 7

→(DRN 03-2063, R14)

THIS FIGURE HAS BEEN DELETED

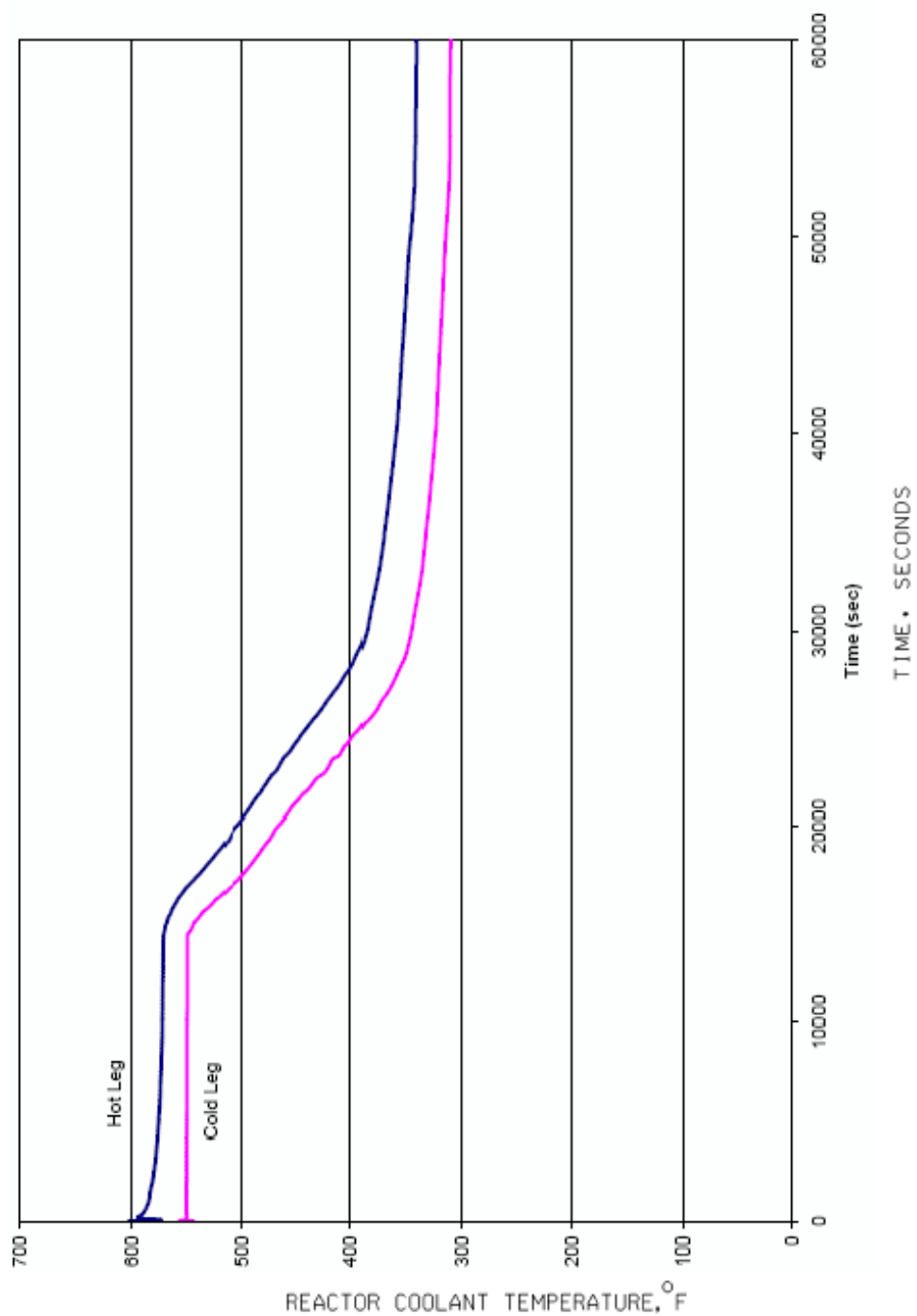
←(DRN 03-2063, R14)

Revision 14 (12/05)

LOUISIANA
POWER & LIGHT CO.
Waterford Steam
Electric Station #3

LIMITED COOLDOWN ONE LPSI PUMP AND
ONE SDHX OPERATING

FIGURE
9.3 8

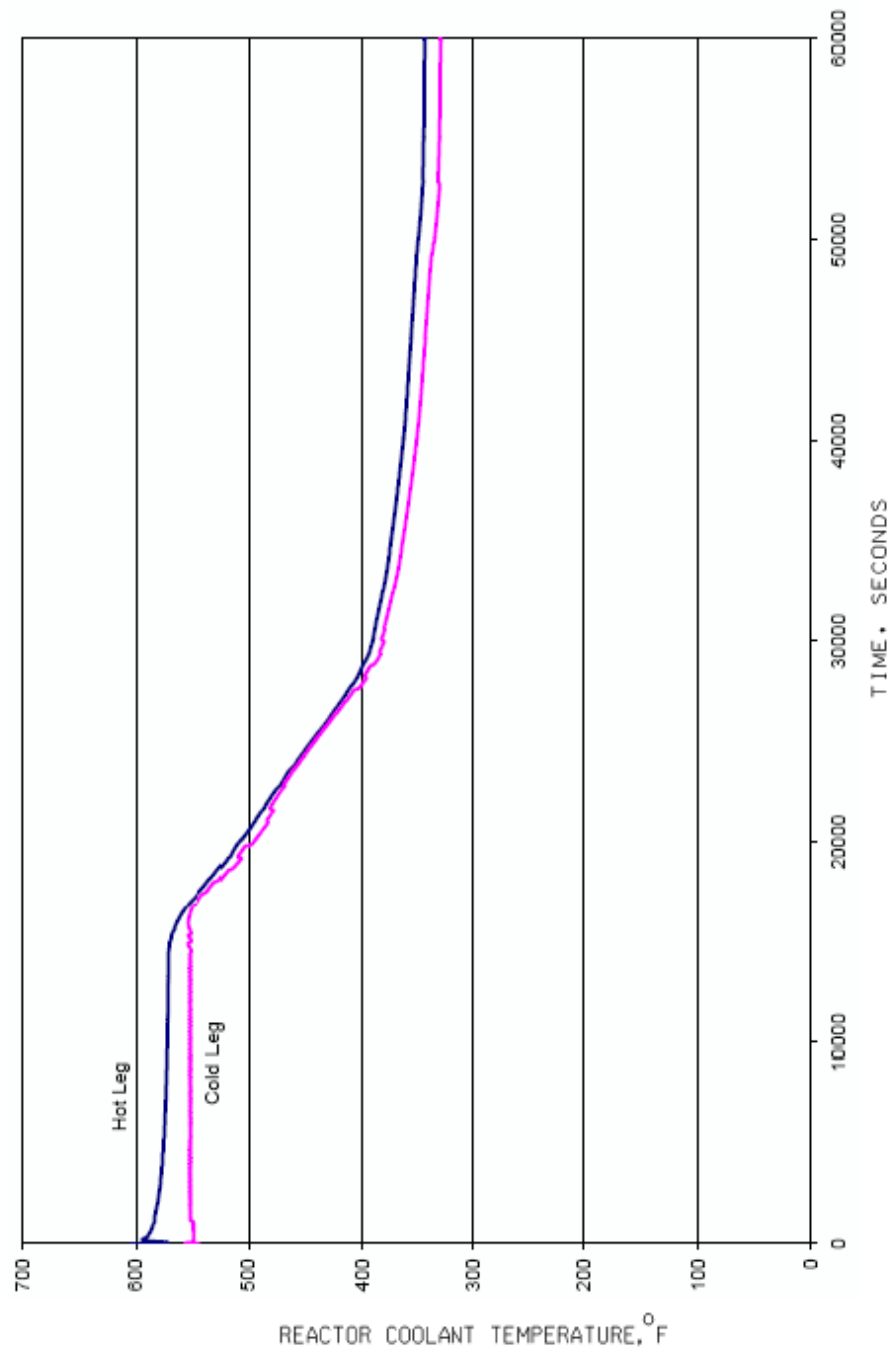


Revision 307 (07/13)

Waterford Steam
Electric Station #3

COOLDOWN WITHOUT A-C COOLANT TEMPERATURES IN
LOOP 1 (ATMOSPHERIC DUMP VALVE AND MAIN STEAM
CROSS-CONNECT UNAVAILABLE)

Figure
9.3-8A



Revision 307 (07/13)

Waterford Steam
Electric Station #3

COOLDOWN WITHOUT A-C COOLANT TEMPERATURES IN
LOOP 2 (ATMOSPHERIC DUMP VALVE AND MAIN STEAM
CROSS-CONNECT UNAVAILABLE)

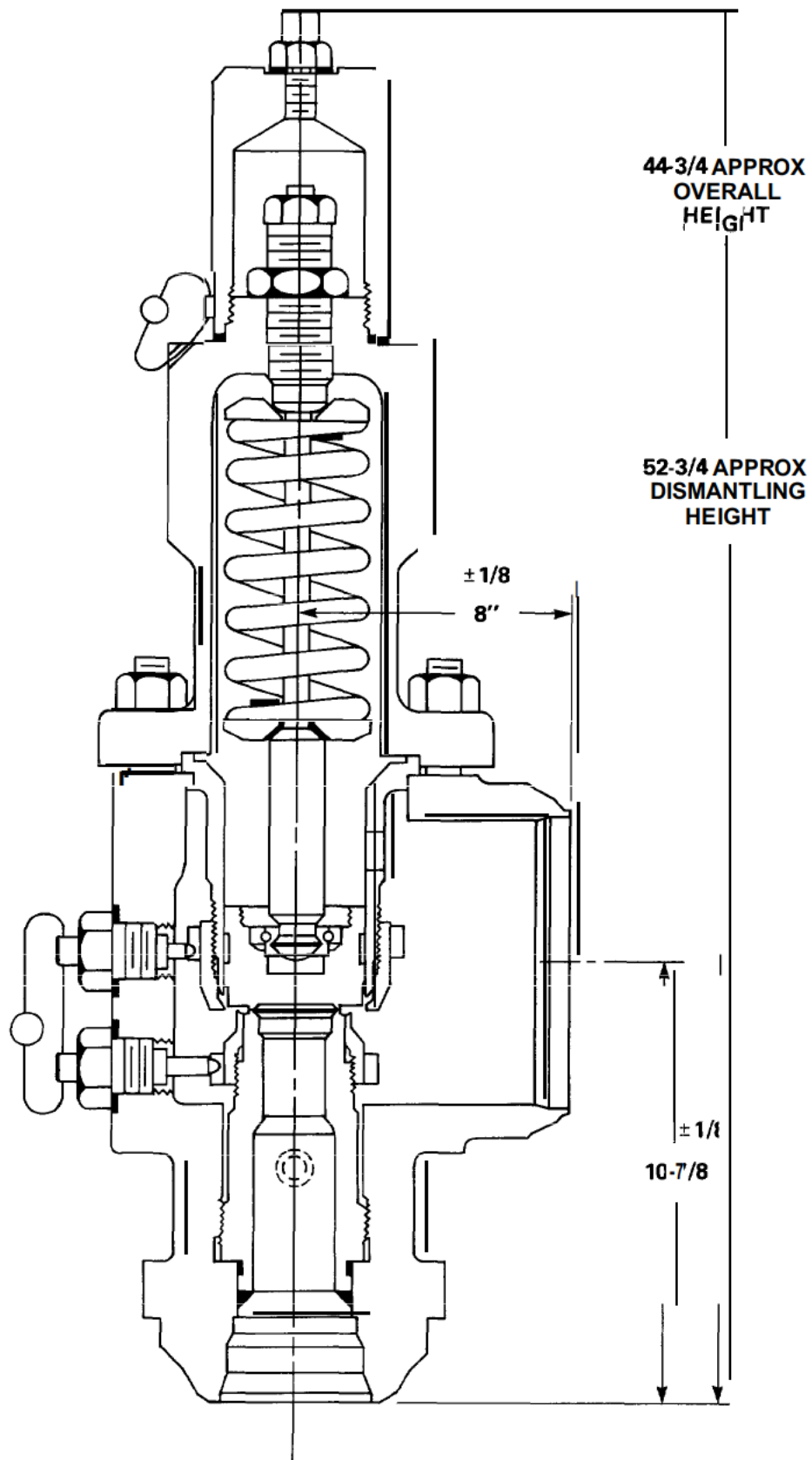
Figure
9.3-8B

Security-Related Information
Figure Withheld Under 10 CFR 2.390

REVISION 7 (10/94)

WATERFORD STEAM
ELECTRIC STATION •3

HYDROGEN STORAGE SYSTEM
FIGURE 9.3-9



LOUISIANA
POWER & LIGHT CO.
Waterford Steam
Electric Station

SDCS RELIEF VALVE

Figure
9.3-10

Security-Related Information
Figure Withheld Under 10 CFR 2.390

LOUISIANA POWER & LIGHT CO.
Waterford Steam Electric Station

POST ACCIDENT SAMPLING
SYSTEM

FIGURE 9.3-11