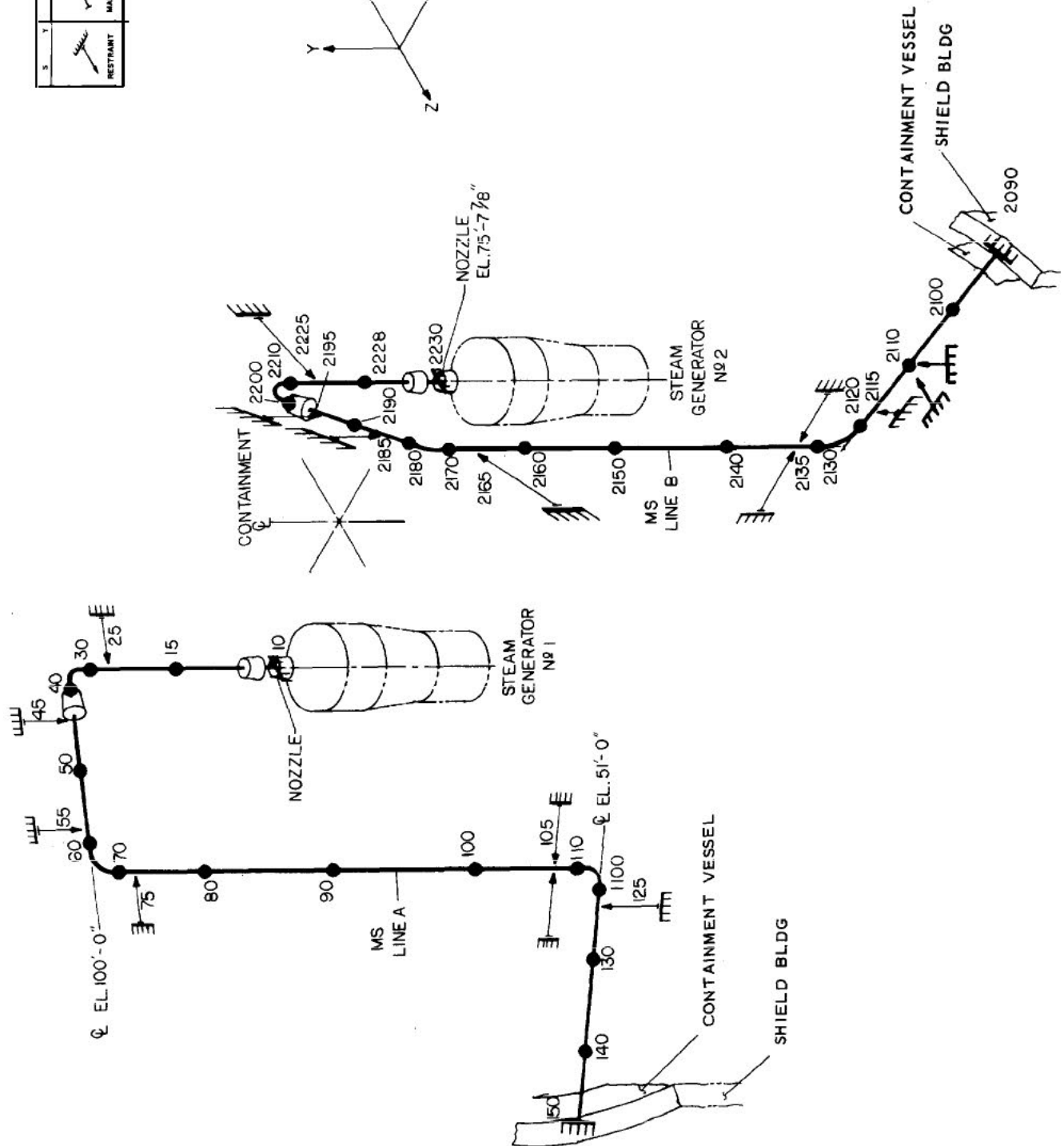
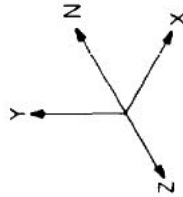


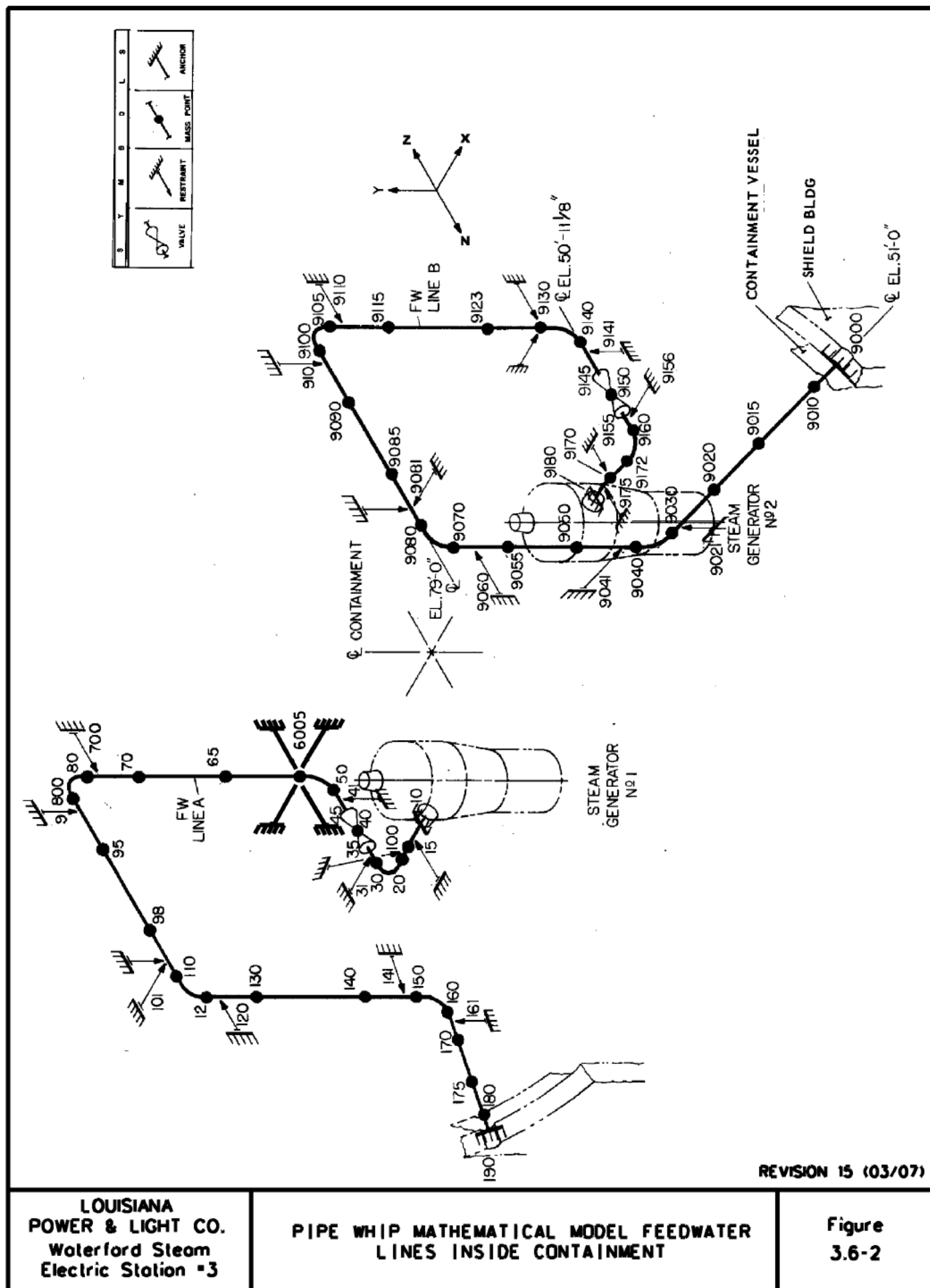
S	Y	M	B	D	L	S
	RESTRAINT	MASS POINT	REDUCER	REDUCER	ANCHOR	



LOUISIANA
POWER & LIGHT CO.
Waterford Steam
Electric Station

PIPE WHIP MATHEMATICAL MODEL MAIN STEAM
PIPING INSIDE CONTAINMENT

Figure
3.6-1

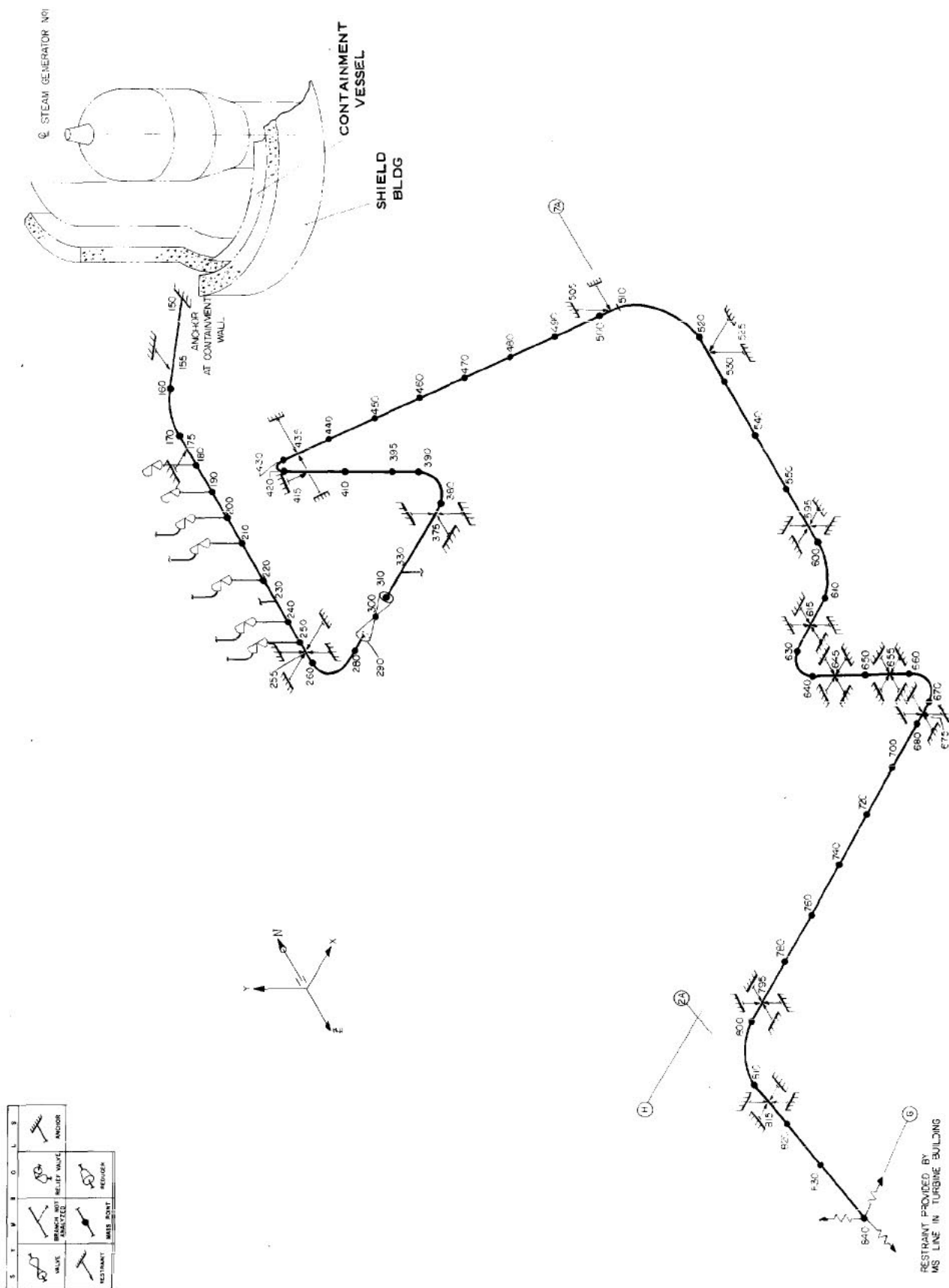


REVISION 15 (03/07)

LOUISIANA
POWER & LIGHT CO.
Waterford Steam
Electric Station #3

PIPE WHIP MATHEMATICAL MODEL FEEDWATER
LINES INSIDE CONTAINMENT

Figure
3.6-2

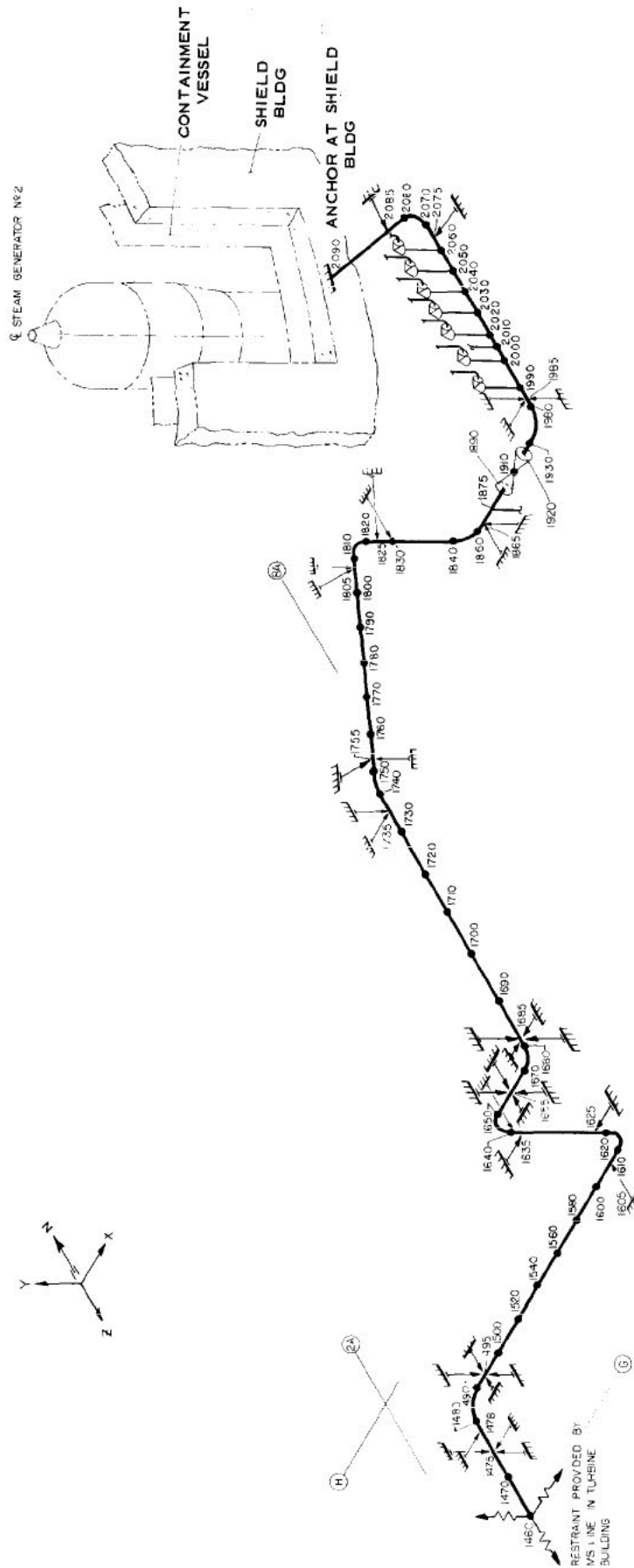
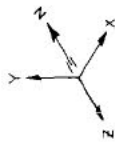


LOUISIANA
POWER & LIGHT CO.
Waterford Steam
Electric Station

PIPE WHIP MATHEMATICAL MODEL MAIN STEAM
LINE A OUTSIDE CONTAINMENT TO COLUMN "G"

Figure
3.6-3

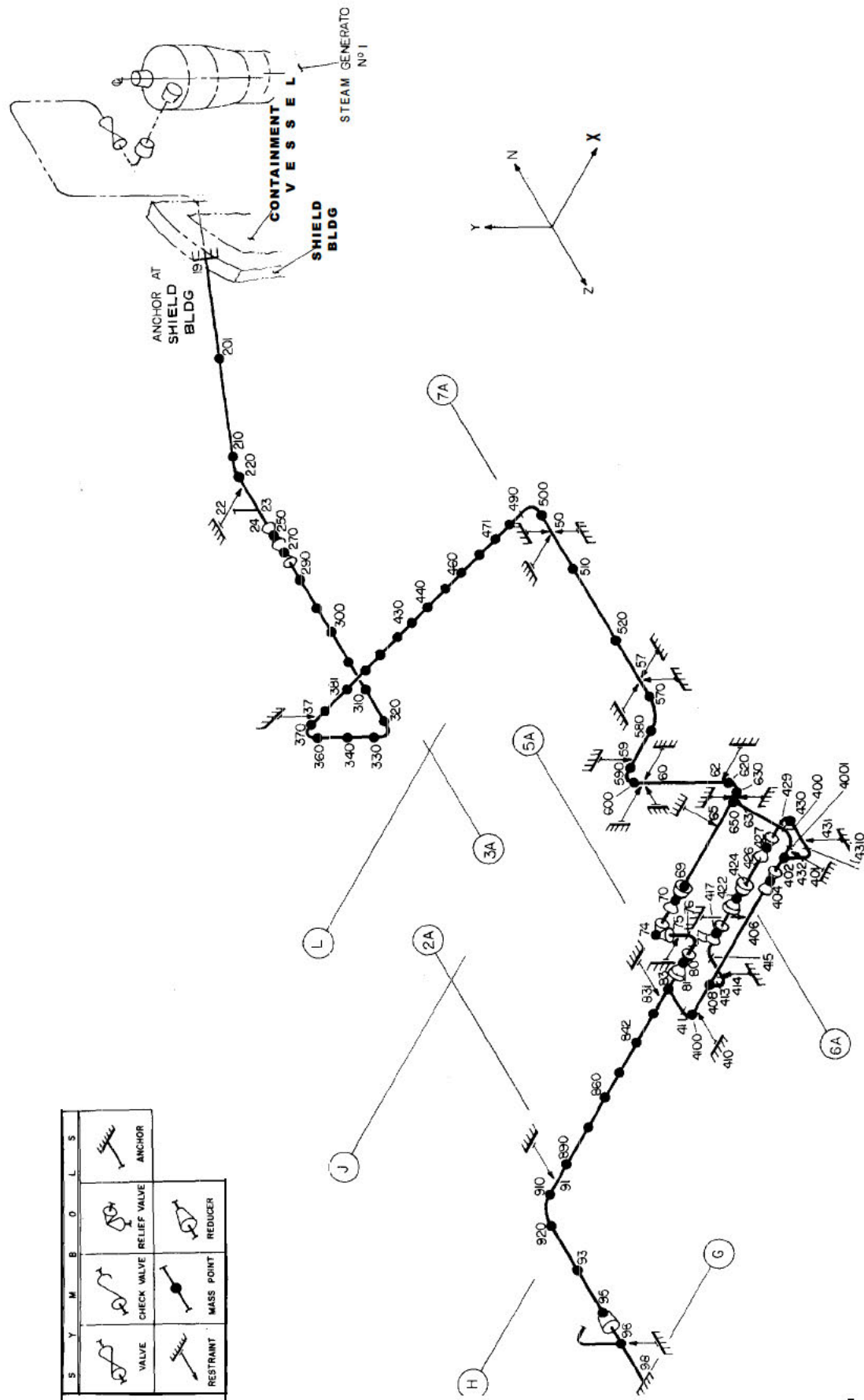
S	T	U	V	W	X	Y	Z
RESTRAINT	VALVE	MASS POINT	RELIEF VALVE	ANCHOR			
		BRANCH POINT ANALYZED					



LOUISIANA
POWER & LIGHT CO.
Waterford Steam
Electric Station

PIPE WHIP MATHEMATICAL MODEL MAIN STEAM
LINE B OUTSIDE CONTAINMENT TO COLUMN "G"

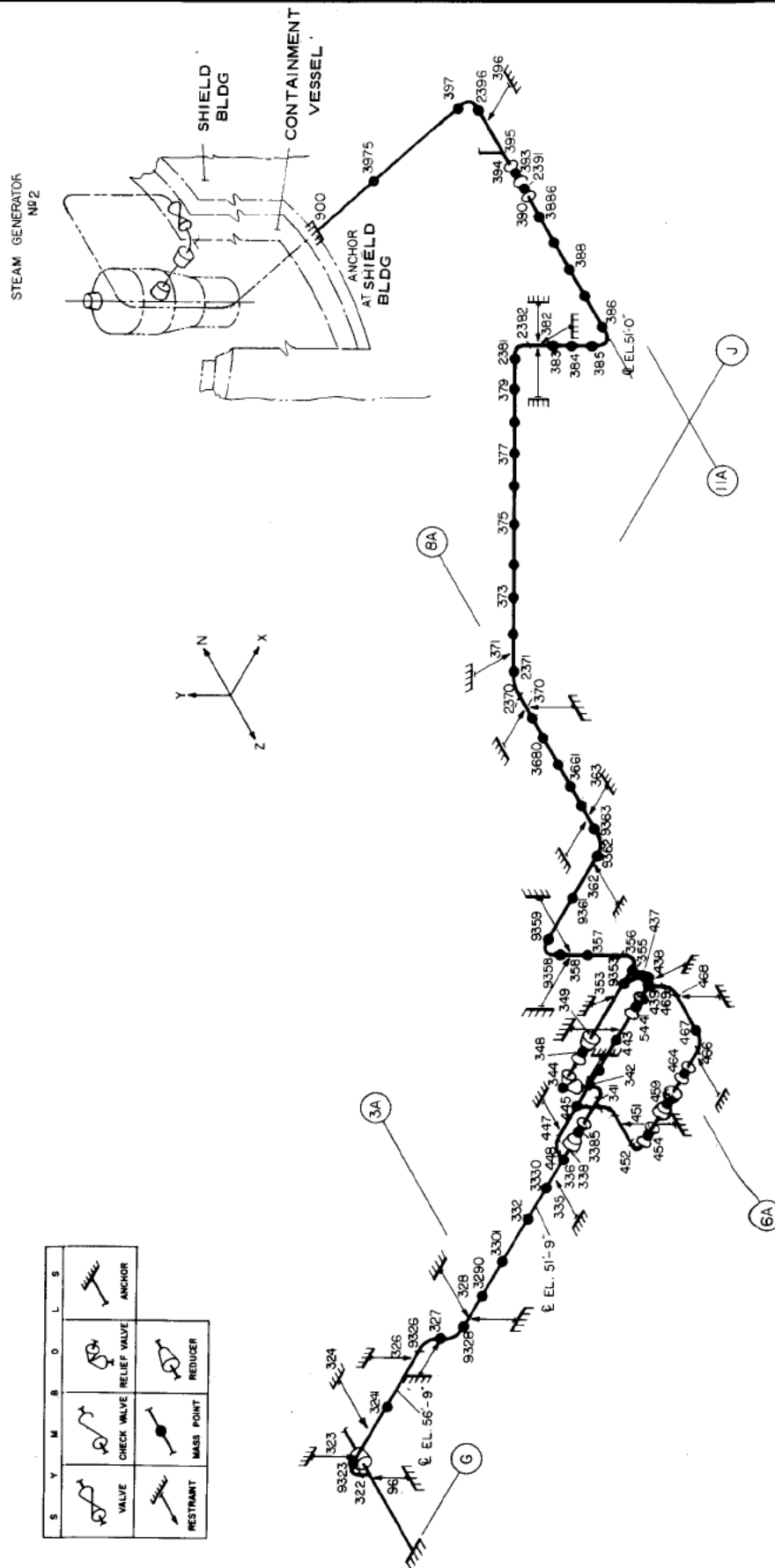
Figure
3.6-4



LOUISIANA
POWER & LIGHT CO.
Waterford Steam
Electric Station

PIPE WHIP MATHEMATICAL MODEL FEEDWATER
LINE A OUTSIDE CONTAINMENT TO COLUMN "G"

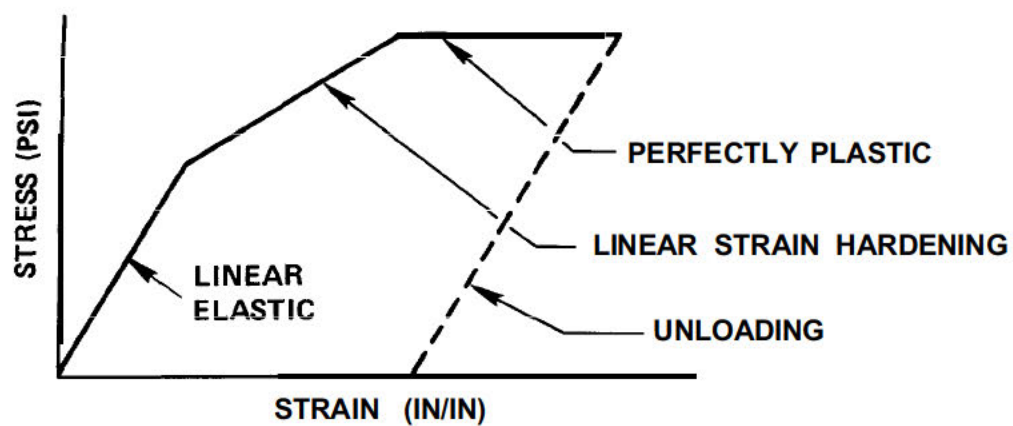
Figure
3.6-5

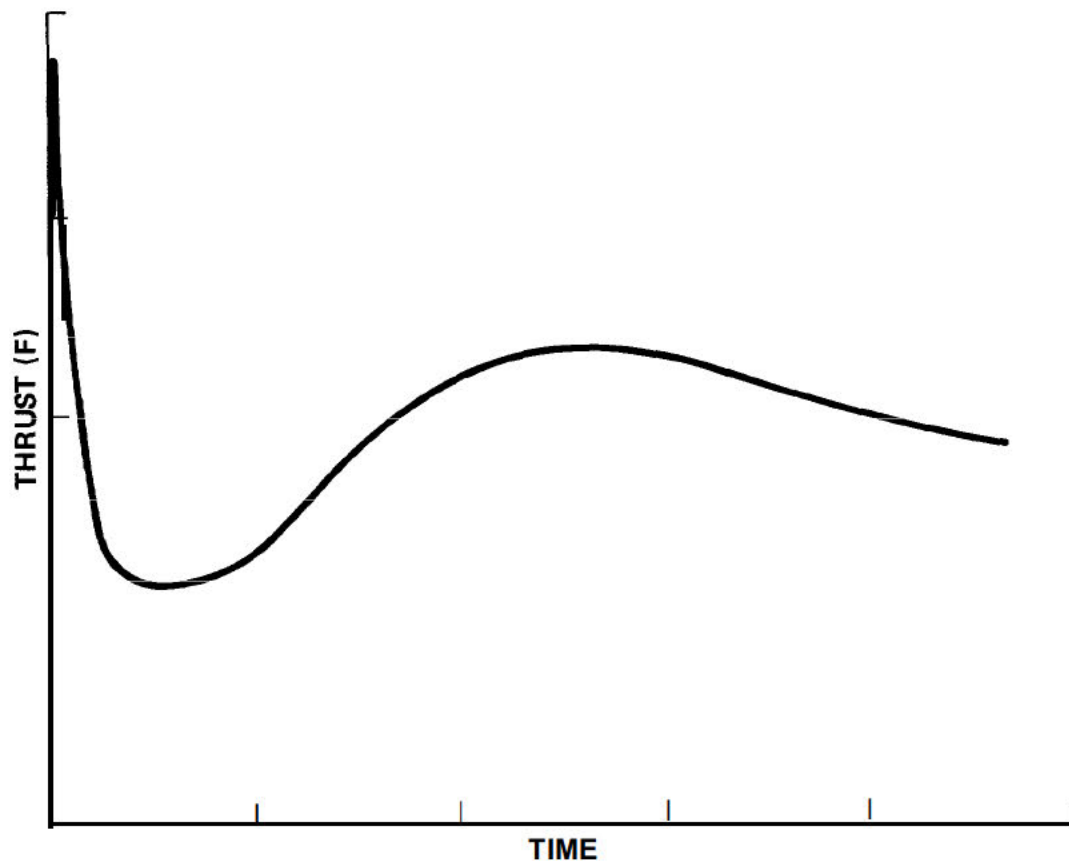
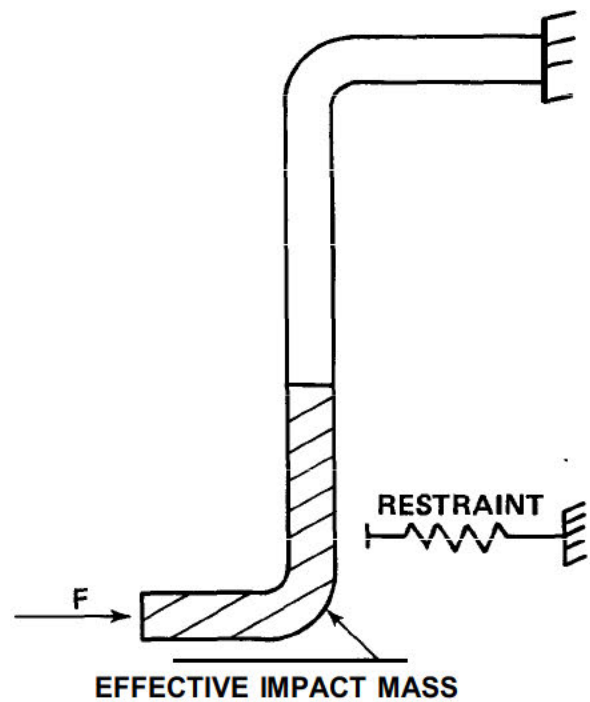
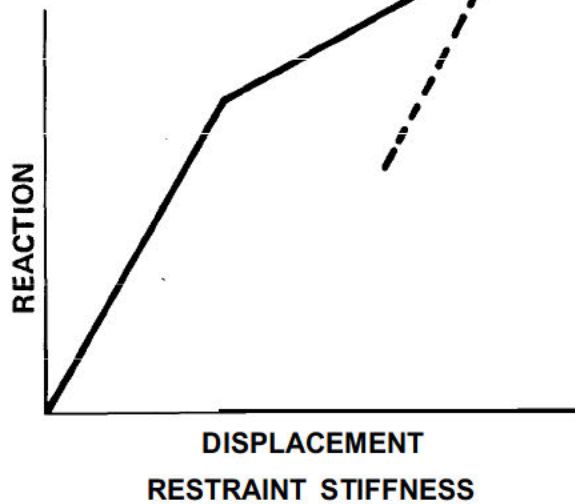


LOUISIANA
POWER & LIGHT CO.
Waterford Steam
Electric Station

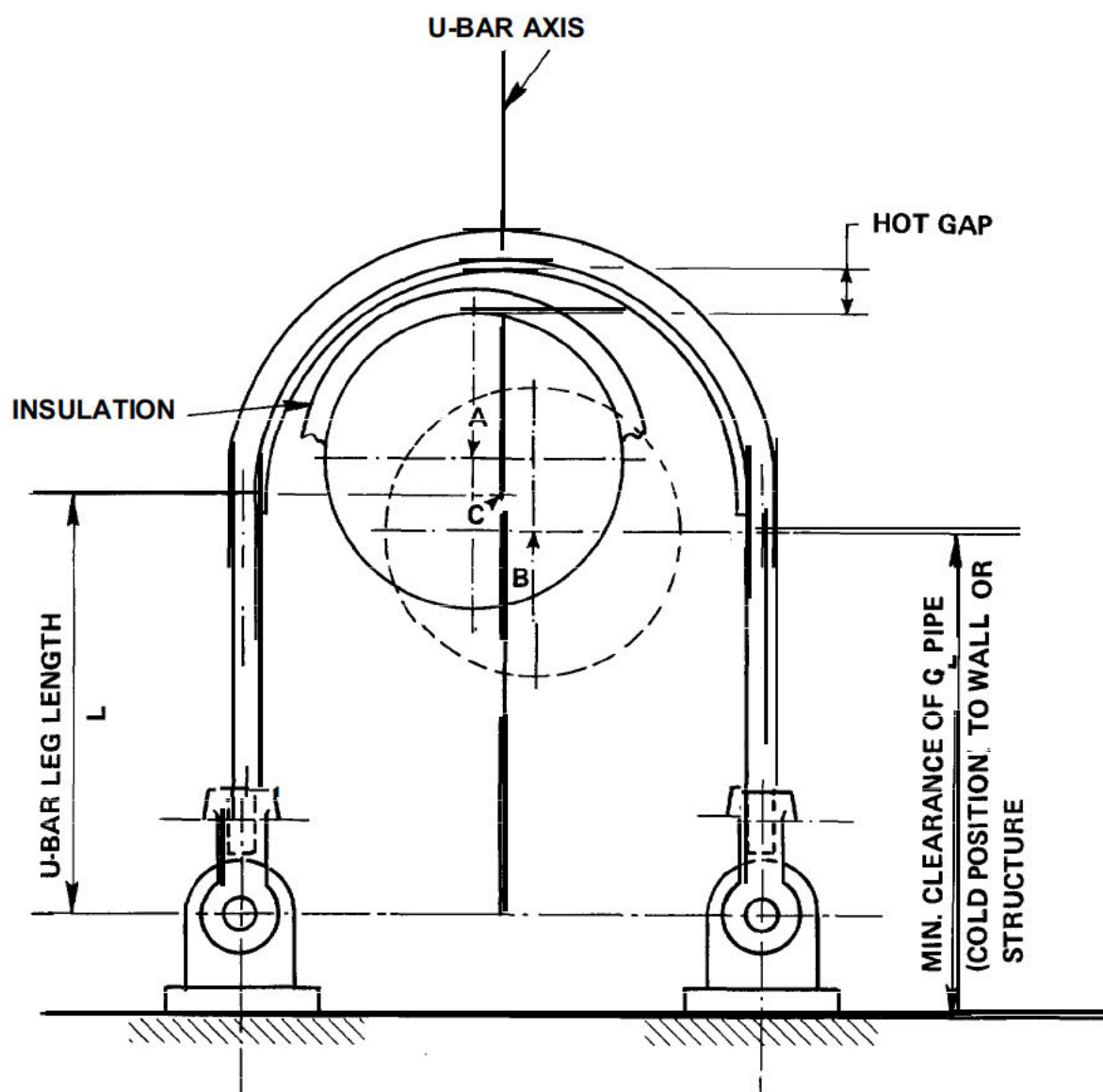
PIPE WHIP MATHEMATICAL MODEL FEEDWATER
LINE B OUTSIDE CONTAINMENT TO COLUMN "G"

Figure
3.6-6





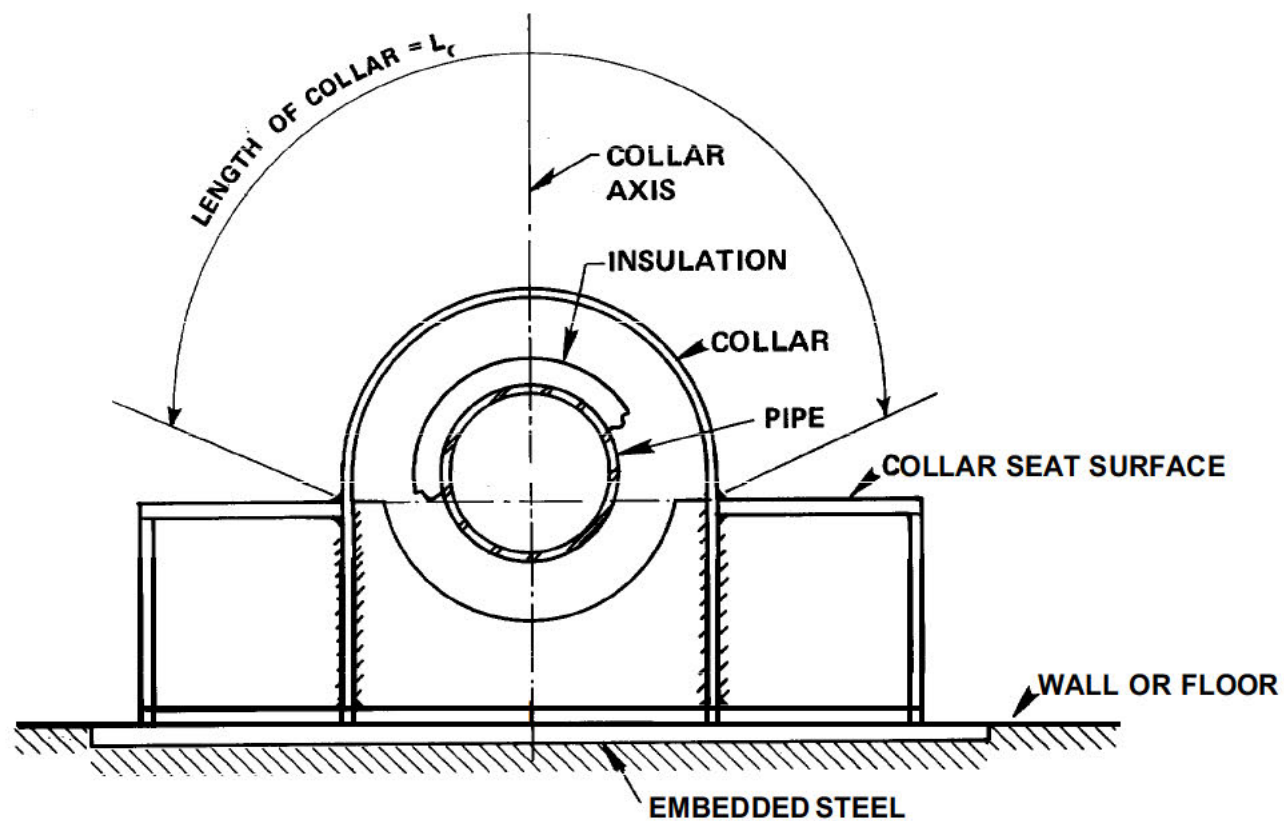
BLOWDOWN THRUST-TIME HISTORY

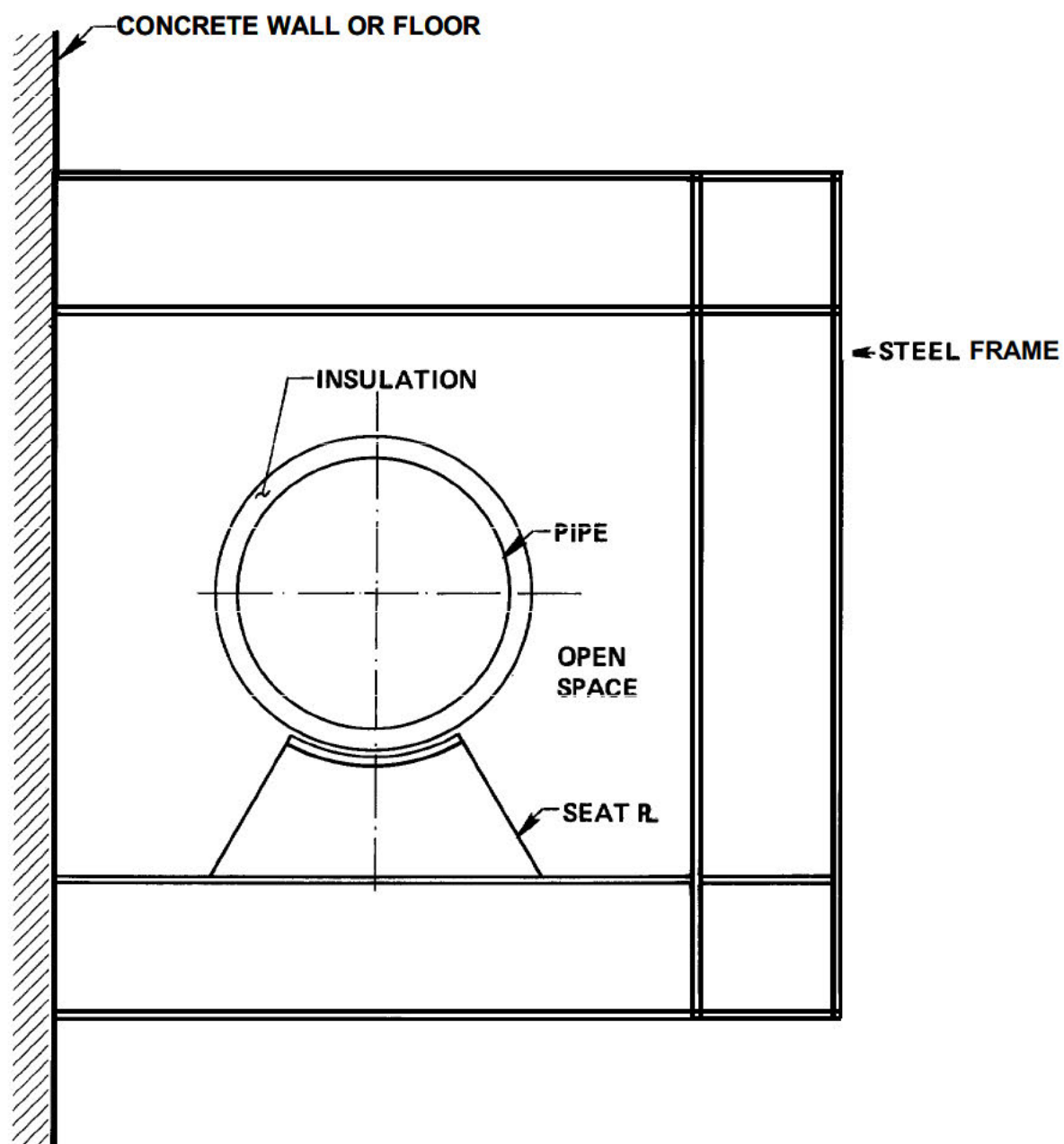


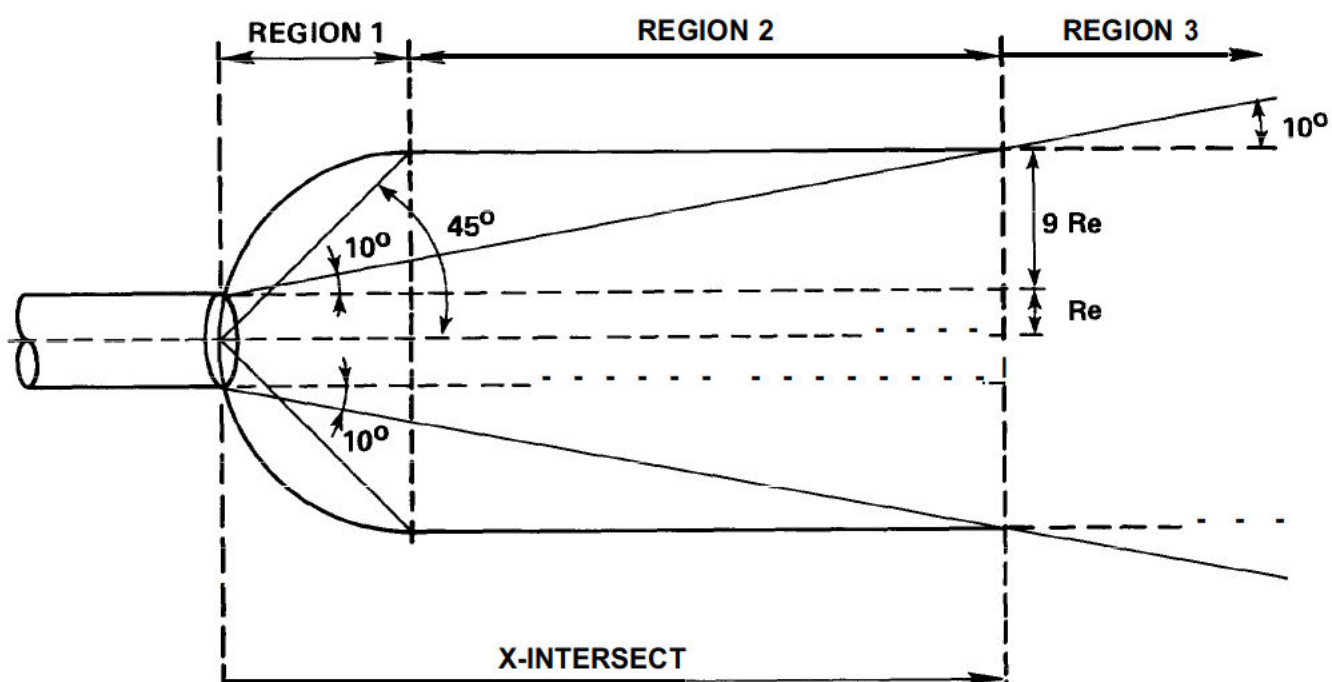
A = CENTERLINE OF PIPE IN HOT POSITION

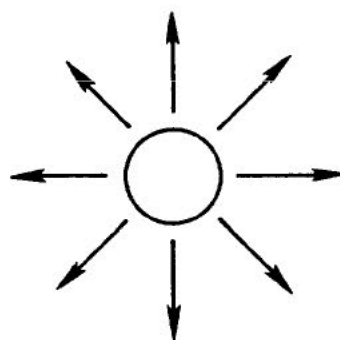
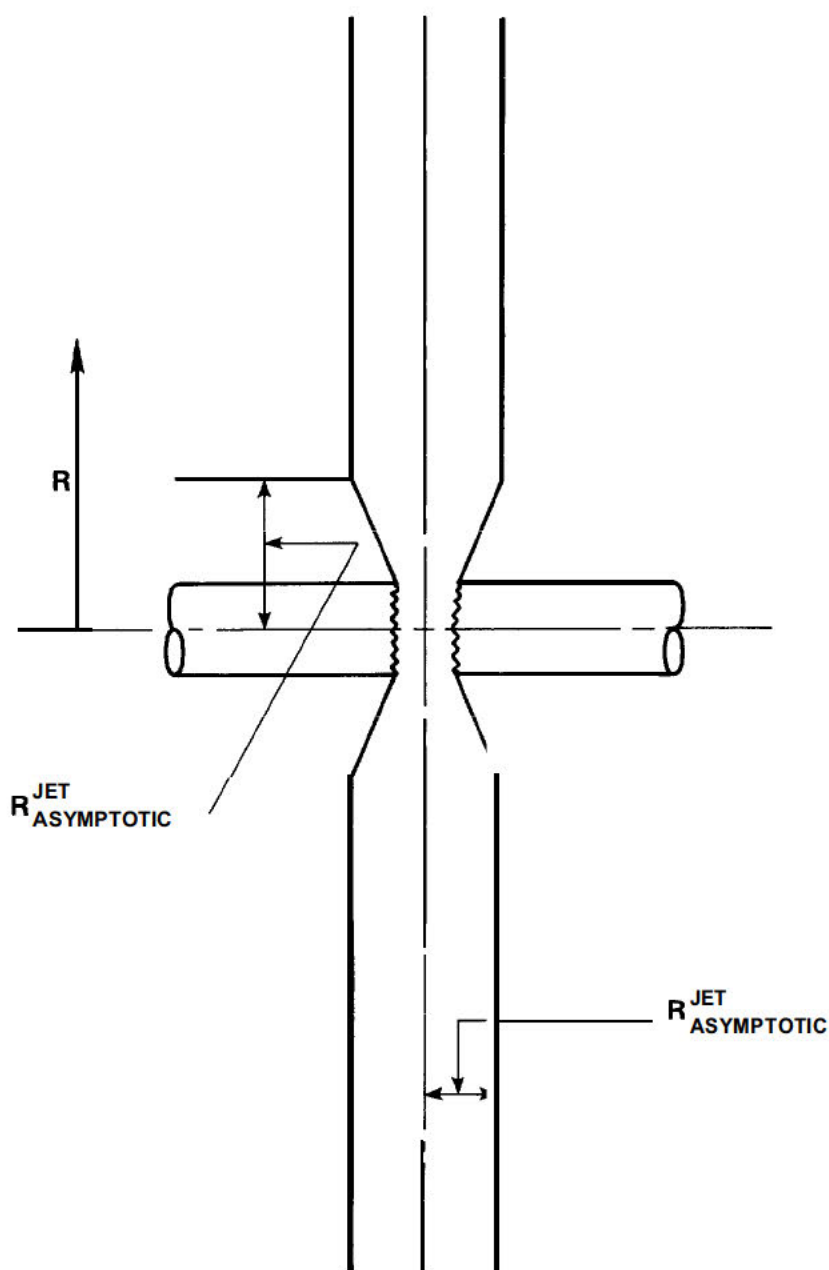
B = CENTERLINE OF PIPE IN COLD POSITION

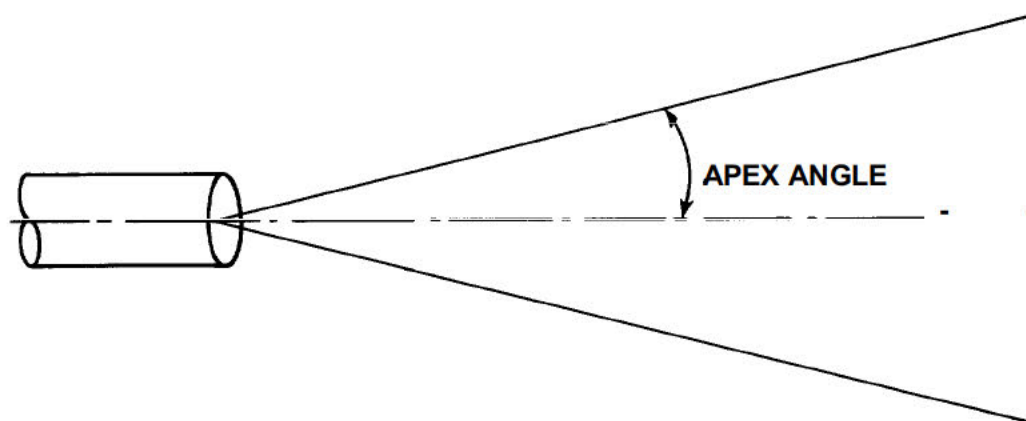
C = CENTER OF U-BAR CURVED PORTION; GENERALLY.
C IS THE MID-POINT OF STRAIGHT LINE AB











Security Related Information
Figure Withheld Under 10 CFR 2.390

Security Related Information
Figure Withheld Under 10 CFR 2.390

Security Related Information
Figure Withheld Under 10 CFR 2.390

LOUISIANA POWER & LIGHT CO.
Waterford Steam Electric Station
CONTAINMENT PIPING PENETRATION ASSEMBLIES TYPE III LOAD COMBINATIONS
FIGURE 3.6-17

Security Related Information
Figure Withheld Under 10 CFR 2.390

Security Related Information
Figure Withheld Under 10 CFR 2.390

LOUISIANA POWER & LIGHT CO.

Waterford Steam Electric Station

CONTAINMENT PIPING PENETRATION
ASSEMBLIES TYPE VI
LOAD COMBINATIONS

FIGURE 3.6-19

REF. DWG. SPECIFICATION LOU1564.88 REV. 2

Security Related Information
Figure Withheld Under 10 CFR 2.390

LOUISIANA POWER & LIGHT CO. Waterford Steam Electric Station	BLOWDOWN AND TOTAL WAVE FORCES	Figure 3.6-20
-----------------------------------------------------------------------	--------------------------------	------------------

Security Related Information
Figure Withheld Under 10
CFR 2.390