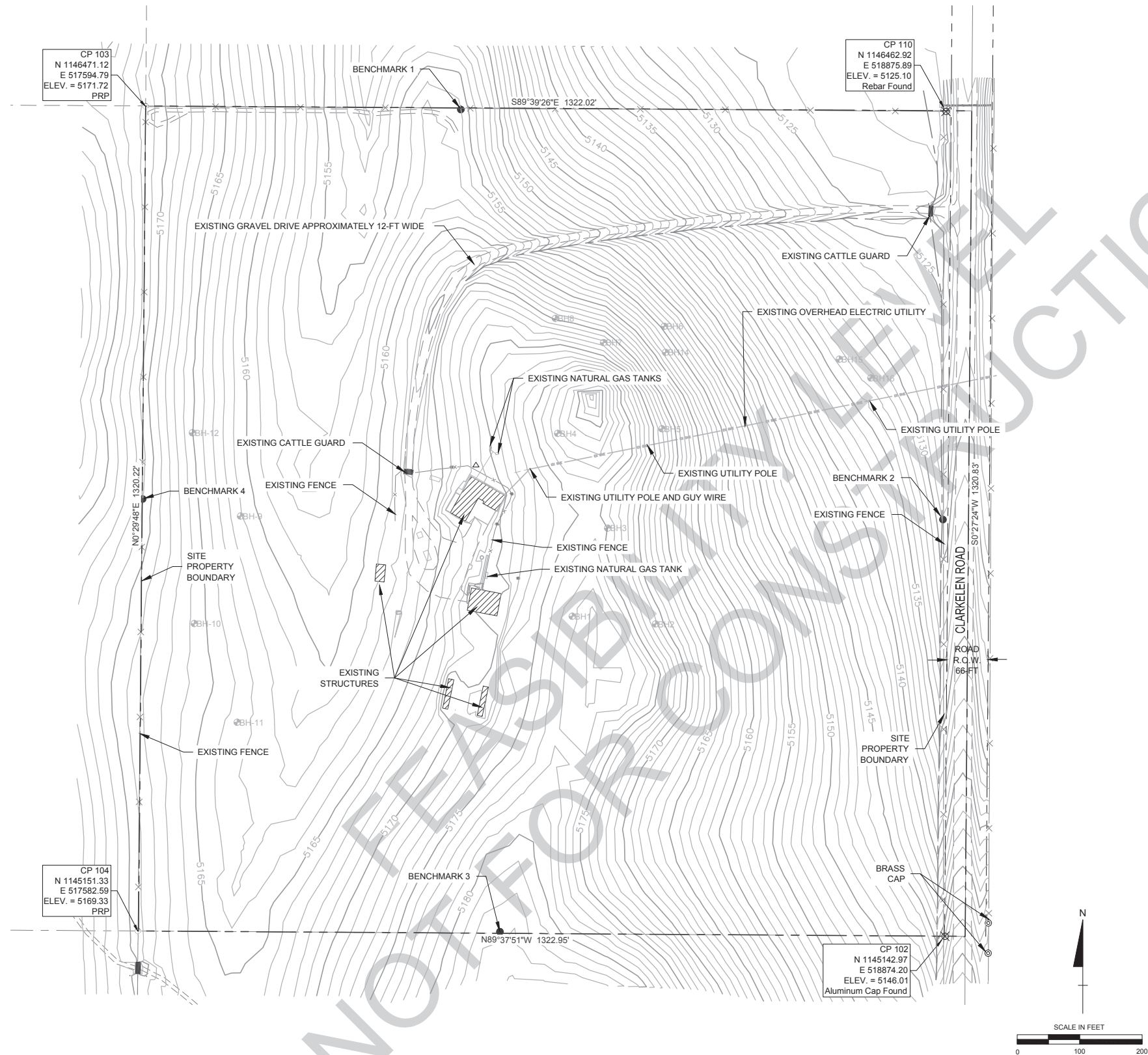


ADDENDUM 3-A
CIVIL SITE CONSTRUCTION DRAWINGS



NOTES:

- EXISTING CONDITIONS INFORMATION PROVIDED BY SURVEY PERFORMED BY INBERG-MILLERS ENGINEERS IN JUNE 2012.
- THE UTILITY LOCATIONS SHOWN ARE AS MARKED BY THEIR OWNERS, FROM THE OWNERS RECORDS OR FROM FIELD EVIDENCE. THE SIZE AND LOCATION OF UNDERGROUND UTILITIES WAS NOT VERIFIED BY EXCAVATION. THE CONTRACTOR IS RESPONSIBLE FOR LOCATING AND PROTECTING UTILITIES DURING CONSTRUCTION.
- ELEVATIONS BASED ON NAVD88 DATUM DERIVED FROM STATIC GPS OBSERVATIONS AND CALCULATED BY NGS-OPUS.
- BASIS OF BEARING BEING GRID NORTH ACCORDING TO THE WYOMING STATE PLANE COORDINATE SYSTEM-EAST ZONE WITH A BEARING OF N89°39'12"W, ALONG THE NORTH LINE OF SECTION 1, BETWEEN A 3/4-INCH BRASS CAP FOUND AT THE NORTHWEST CORNER OF SAID SECTION 1 AND A 3/4-INCH BRASS CAP FOUND AT THE NORTH 1/4 CORNER OF SAID SECTION 1, T42N, R74W.
- EXISTING SEPTIC AND DRINKING WATER SYSTEMS MAY EXIST BUT WERE NOT LOCATED DURING SURVEYING. CONTRACTOR TO LOCATE AND REMOVE.



DRAWING REVISIONS TYPES: 1 PRE-BID 2 POST-BID 3 POST IFC									
NO.	DATE	CADD	CHECK	APP'D	ISSUE / REVISION DESCRIPTION	NO.	DATE	CADD	CHECK

AUC LLC

90% REVIEW SET
NOT FOR
CONSTRUCTION



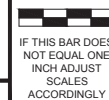
This drawing and all related documents (including electronic media) was prepared by TREC Inc. except as noted otherwise therein and shall remain the property of TREC Inc. The information herein shall only be used by the client to whom the services are rendered and only for the purpose of constructing and/or installing the work as shown at the designated location. Any other use of said documents, including (without limitation) any reproduction or alteration is strictly prohibited, and the user shall hold harmless and indemnify TREC Inc. from all liabilities which may arise from any unauthorized use. Such use shall cause the waiver of expressed or implied warranties and shall cover any liabilities which may arise from the construction, use or result of any such unauthorized use or changes.

BOZEMAN OFFICE
1800 West Koch, Suite 6
Bozeman, MT 59715
Tel: (406) 596-8364
Fax: (406) 522-8460

GREAT FALLS OFFICE
600 Central, Suite 204
Great Falls, MT 59401
Tel: (406) 952-0745

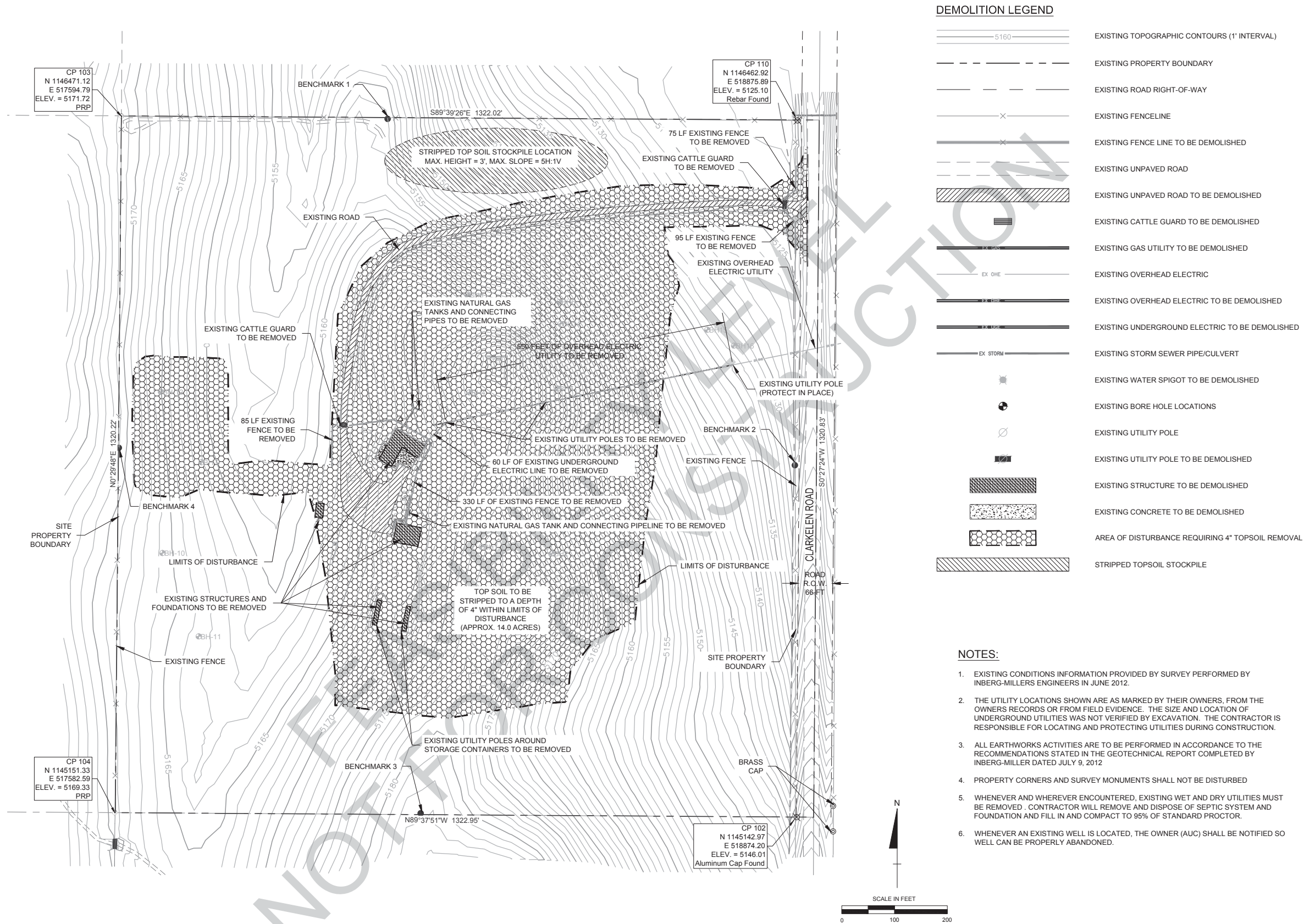
CASPER OFFICE
900 Werner Court, Suite 150
Casper, WY 82601
Tel: (307) 265-0696
Fax: (307) 265-2498

BUTTE OFFICE
521 East Front Street
Butte, MT 59701
Tel: (406) 491-0912



PROJECT NO.:	CADD:	CHECKED BY:	APPROVED BY:	PLOT DATE:
2012-250	TBK	RRU	SLH	9/28/2012 4:36 PM
EXISTING CONDITIONS & SURVEY CONTROL				
RENO CREEK PROJECT				
PREPARED FOR				
AUC LLC				
CAMPBELL COUNTY, WYOMING				

SHEET
C-1.0



DRAWING REVISIONS TYPES: 1 PRE-BID 2 POST-BID 3 POST IFC									
NO.	DATE	CADD	CHECK	APP'D	ISSUE / REVISION DESCRIPTION	NO.	DATE	CADD	CHECK

AUC LLC

90% REVIEW SET
NOT FOR
CONSTRUCTION



Engineering & Environmental Management
www.trecorp.com

This drawing and all related documents (including electronic media) was prepared by TREC Inc. except as noted otherwise therein and shall remain the property of TREC Inc. The information herein shall only be used by the client to whom the services are rendered and only for the purpose of constructing and/or installing the work as shown at the designated location. Any other use of said documents, including (without limitation) any reproduction or alteration in writing prohibited, and the user shall hold harmless and indemnify TREC Inc. from all liabilities which may arise from any unauthorized use. Such use shall cause the waiver of expressed or implied warranties and shall cover any liabilities which may arise from the construction, use or result of any such unauthorized use or changes.

BOZEMAN OFFICE
1800 West Koch, Suite 6
Bozeman, MT 59715
Tel: (406) 586-8364
Fax: (406) 522-8460

GREAT FALLS OFFICE
600 Central, Suite 204
Great Falls, MT 59401
Tel: (406) 952-0745

CASPER OFFICE
900 Warner Court, Suite 150
Casper, WY 82601
Tel: (307) 265-0696
Fax: (307) 265-2498

BUTTE OFFICE
521 East Front Street
Butte, MT 59701
Tel: (406) 491-0912

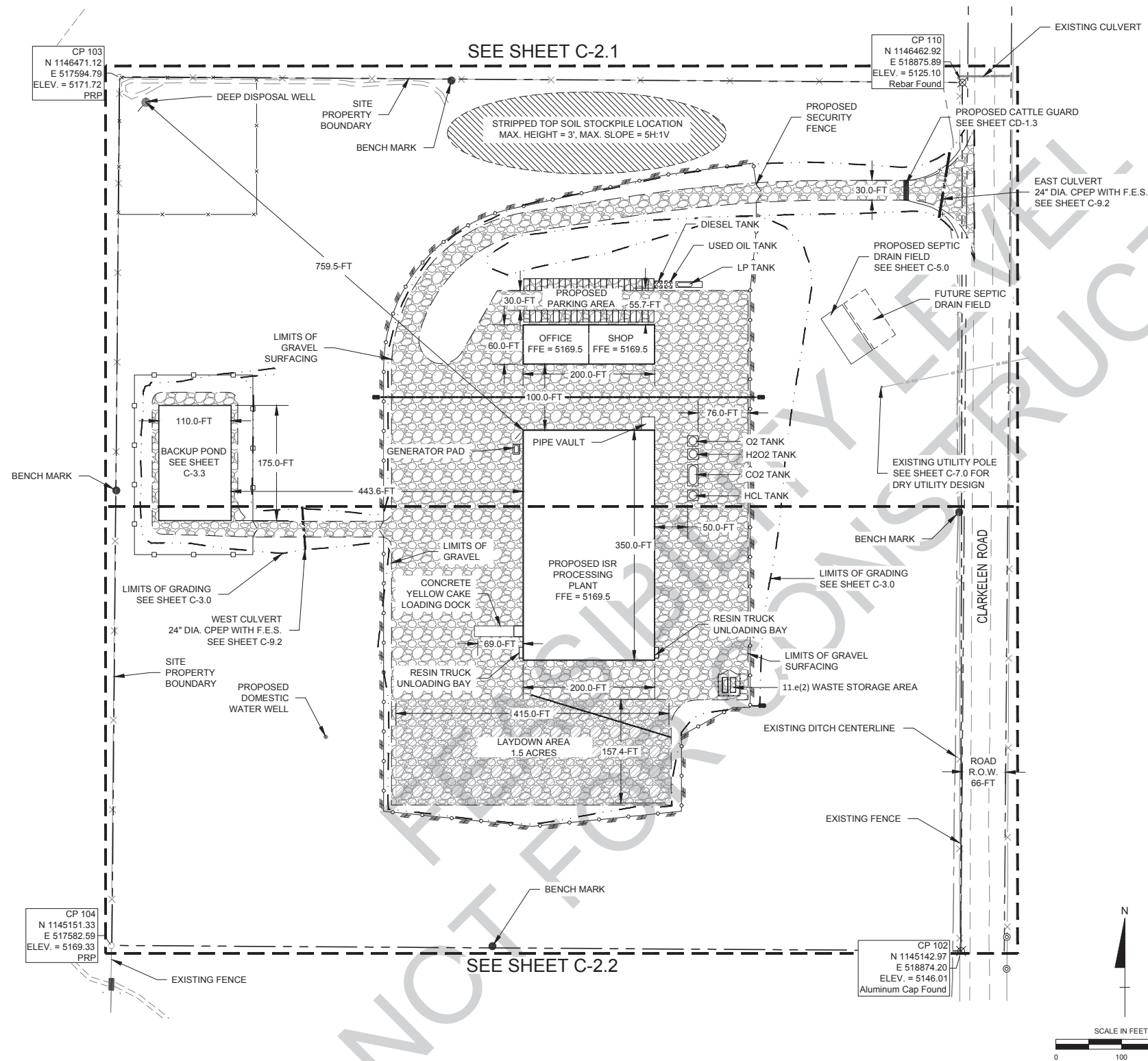
IF THIS BAR DOES
NOT EQUAL ONE
INCH ADJUST
SCALES
ACCORDINGLY

PROJECT NO.:	CADD:	CHECKED BY:	APPROVED BY:	PLOT DATE:
2012-250	TBK	RRU	SLH	9/28/2012 4:36 PM

DEMOLITION PLAN RENO CREEK PROJECT PREPARED FOR AUC LLC CAMPBELL COUNTY, WYOMING				
--	--	--	--	--

SHEET

C-1.1



NOTES:

- EXISTING CONDITIONS INFORMATION PROVIDED BY SURVEY PERFORMED BY INBERG-MILLERS ENGINEERS IN JUNE 2012 AND MODIFIED TO REFLECT POST-DEMOLITION CONDITIONS
- CONTRACTOR IS RESPONSIBLE TO FIELD VERIFY ALL UTILITY LOCATIONS PRIOR TO PERFORMING CONSTRUCTION ACTIVITIES
- ALL GRADING AND FOUNDATION CONSTRUCTION IS TO BE PERFORMED IN ACCORDANCE WITH THE RECOMMENDATIONS MADE IN THE GEOTECHNICAL REPORT BY INBERG-MILLER DATED JULY 9, 2012
- FINISH FLOOR ELEVATIONS (FFE) REPRESENT APPROXIMATE BALANCED SITE CONDITIONS. ELEVATIONS WILL LIKELY CHANGE PRIOR TO FINAL SUBMITTAL.
- LIMITS OF GRAVEL INCLUDE SITE ACCESS ROADWAYS AND LAY DOWN YARD AREAS. GRAVEL DEPTHS WILL BE DETERMINED AS PART OF THE FINAL DESIGN SUBMITTAL.
- BOLLARD LOCATIONS TO BE SET WHEN EQUIPMENT LOCATION IS FINALIZED
- ELECTRICAL TRANSFORMER LOCATION IS UNKNOWN AT THIS TIME AND WILL BE VERIFIED BY SUB-CONSULTANT PRIOR TO FINAL SUBMITTAL
- WET UTILITIES AND APPURTENANCES LOCATIONS TO BE FINALIZED UPON FINAL SUBMITTAL



DRAWING REVISIONS TYPES:					1	PRE-BID	2	POST-BID	3	POST IFC
NO.	DATE	CADD	CHECK	APP'D	ISSUE / REVISION DESCRIPTION					

AUC LLC

90% REVIEW SET
NOT FOR
CONSTRUCTION



This drawing and all related documents (including electronic media) was prepared by TREC Inc. except as noted otherwise therein and shall remain the property of TREC Inc. The information herein shall only be used by the client to whom the services are rendered and only for the purpose of constructing and/or installing the work as shown at the designated location. Any other use of said documents, including (without limitation) any reproduction or alteration is strictly prohibited, and the user shall hold harmless and indemnify TREC Inc. from all liabilities which may arise from any unauthorized use. Such use shall cause the waiver of expressed or implied warranties and shall cover any liability which may arise from the construction, use or result of any such unauthorized use or changes.

BOZEMAN OFFICE
1800 West Koch, Suite 6
Bozeman, MT 59715
Tel: (406) 596-8364
Fax: (406) 522-8460

GREAT FALLS OFFICE
600 Central, Suite 204
Great Falls, MT 59401
Tel: (406) 952-0745

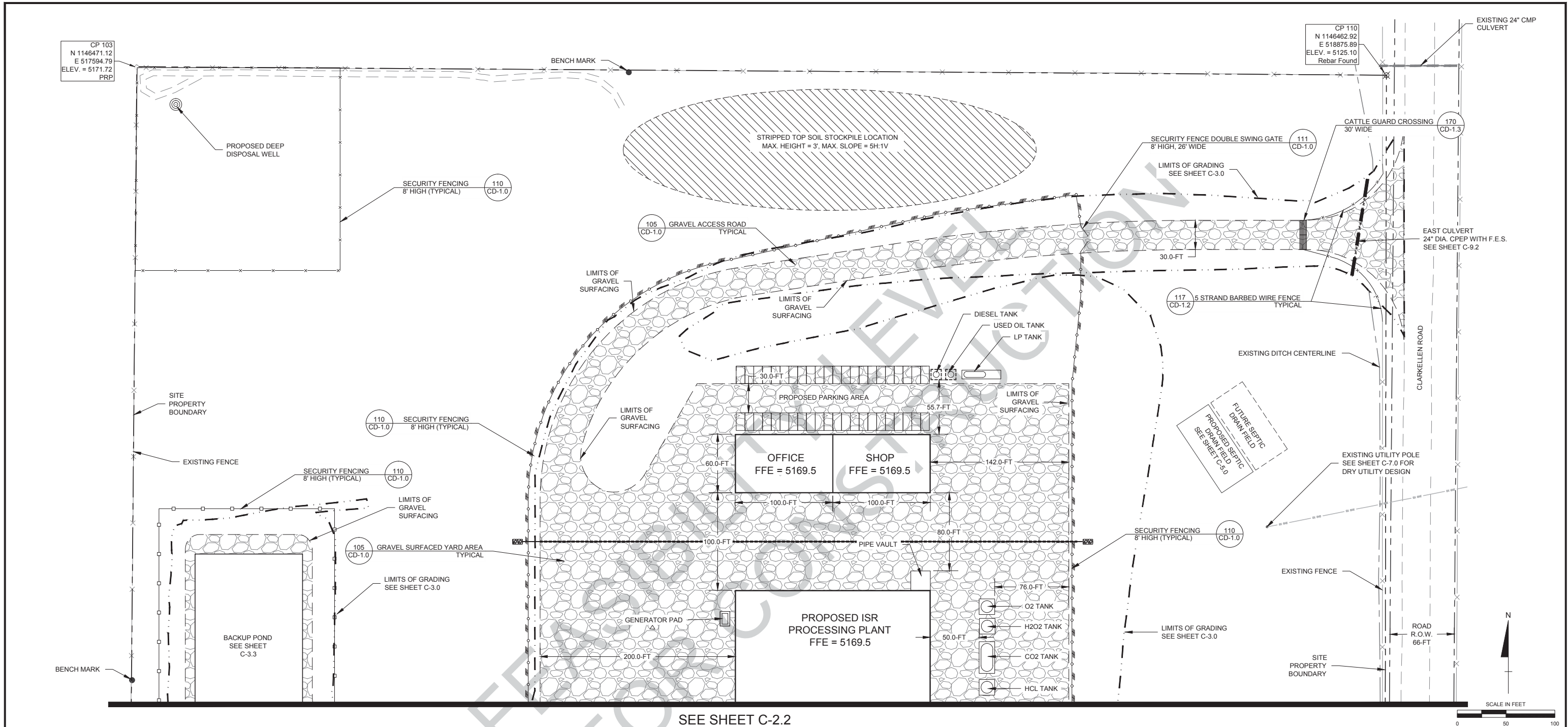
CASPER OFFICE
900 Warner Court, Suite 150
Casper, WY 82601
Tel: (307) 265-0696
Fax: (307) 265-2498

BUTTE OFFICE
521 East Front Street
Butte, MT 59701
Tel: (406) 491-0912



PROJECT NO.:	CADD:	CHECKED BY:	APPROVED BY:	PLOT DATE:	SHEET
2012-250	TBK	RRU	SLH	10/2/2012 4:52 PM	
GENERAL SITE PLAN: INDEX RENO CREEK PROJECT PREPARED FOR AUC LLC CAMPBELL COUNTY, WYOMING					

C-2.0



NOTES:

- EXISTING CONDITIONS INFORMATION PROVIDED BY SURVEY PERFORMED BY INBERG-MILLERS ENGINEERS IN JUNE 2012 AND MODIFIED TO REFLECT POST-DEMOLITION CONDITIONS
- CONTRACTOR IS RESPONSIBLE TO FIELD VERIFY ALL UTILITY LOCATIONS PRIOR TO PERFORMING CONSTRUCTION ACTIVITIES
- ALL GRADING AND FOUNDATION CONSTRUCTION IS TO BE PERFORMED IN ACCORDANCE WITH THE RECOMMENDATIONS MADE IN THE GEOTECHNICAL REPORT BY INBERG-MILLER DATED JULY 9, 2012
- FINISH FLOOR ELEVATIONS (FFE) REPRESENT APPROXIMATE BALANCED SITE CONDITIONS. ELEVATIONS WILL LIKELY CHANGE PRIOR TO FINAL SUBMITTAL.
- LIMITS OF GRAVEL INCLUDE SITE ACCESS ROADWAYS AND LAY DOWN YARD AREAS. GRAVEL DEPTHS WILL BE DETERMINED AS PART OF THE FINAL DESIGN SUBMITTAL.
- BOLLARD LOCATIONS TO BE SET WHEN EQUIPMENT LOCATION IS FINALIZED
- ADA PARKING REQUIREMENTS TO BE ADDRESSED IN FINAL DESIGN SUBMITTAL.

DRAWING REVISIONS TYPES:					1	PRE-BID	1	POST-BID	1	POST IFC
NO.	DATE	CADD	CHECK	APP'D	ISSUE / REVISION DESCRIPTION					

AUC LLC

90% REVIEW SET
NOT FOR
CONSTRUCTION



BOZEMAN OFFICE
1800 West Koch, Suite 6
Bozeman, MT 59715
Tel: (406) 596-8364
Fax: (406) 522-8460

CASPER OFFICE
900 Warner Court, Suite 150
Casper, WY 82601
Tel: (307) 265-0696
Fax: (307) 265-2498

GREAT FALLS OFFICE
600 Central, Suite 204
Great Falls, MT 59401
Tel: (406) 952-0745

BUTTE OFFICE
521 East Front Street
Butte, MT 59701
Tel: (406) 491-0912

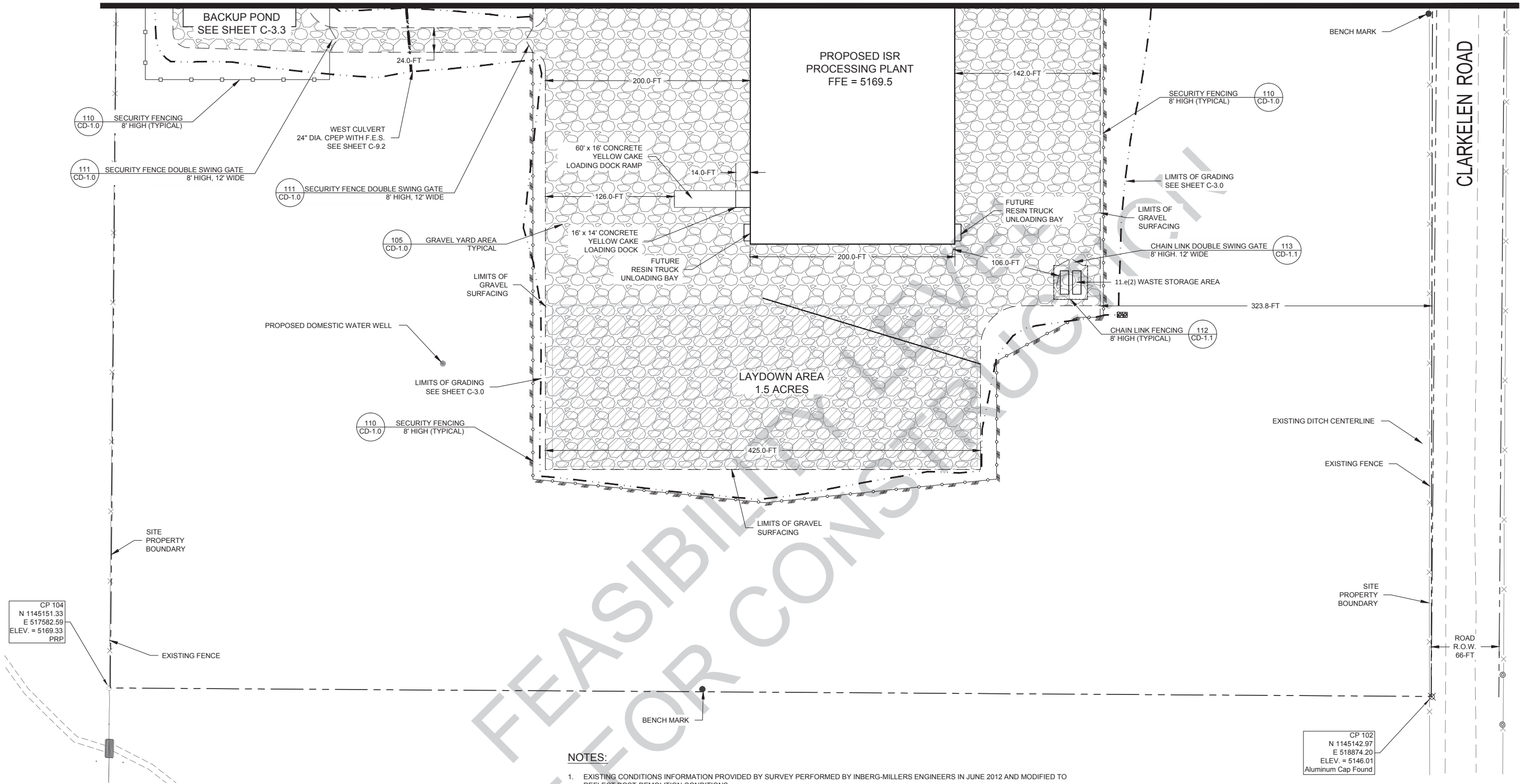
This drawing and all related documents (including electronic media) was prepared by TREC Inc. except as noted otherwise therein and shall remain the property of TREC Inc. The information herein shall only be used by the client to whom the services are rendered and only for the purpose of constructing and/or installing the work as shown at the designated location. Any other use of said documents, including (without limitation) any reproduction or alteration is strictly prohibited, and the user shall hold harmless and indemnify TREC Inc. from all liabilities which may arise from any unauthorized use. Such use shall cause the waiver of expressed or implied warranties and shall cover any liabilities which may arise from the construction, use or result of any such unauthorized use or changes.

IF THIS BAR DOES
NOT EQUAL ONE
INCH ADJUST
SCALES
ACCORDINGLY

PROJECT NO.:	CADD:	CHECKED BY:	APPROVED BY:	PLOT DATE:	SHEET
2012-250	TBK	RRU	SLH	10/2/2012 4:52 PM	
GENERAL SITE PLAN: NORTH HALF RENO CREEK PROJECT PREPARED FOR AUC LLC CAMPBELL COUNTY, WYOMING					

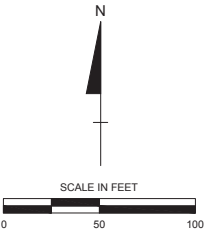


SEE SHEET C-2.1



NOTES:

1. EXISTING CONDITIONS INFORMATION PROVIDED BY SURVEY PERFORMED BY INBERG-MILLERS ENGINEERS IN JUNE 2012 AND MODIFIED TO REFLECT POST-DEMOLITION CONDITIONS
2. CONTRACTOR IS RESPONSIBLE TO FIELD VERIFY ALL UTILITY LOCATIONS PRIOR TO PERFORMING CONSTRUCTION ACTIVITIES
3. ALL GRADING AND FOUNDATION CONSTRUCTION IS TO BE PERFORMED IN ACCORDANCE WITH THE RECOMMENDATIONS MADE IN THE GEOTECHNICAL REPORT BY INBERG-MILLER DATED JULY 9, 2012
4. FINISH FLOOR ELEVATIONS (FFE) REPRESENT APPROXIMATE BALANCED SITE CONDITIONS. ELEVATIONS WILL LIKELY CHANGE PRIOR TO FINAL SUBMITTAL.
5. LIMITS OF GRAVEL INCLUDE SITE ACCESS ROADWAYS AND LAY DOWN YARD AREAS. GRAVEL DEPTHS WILL BE DETERMINED AS PART OF THE FINAL DESIGN SUBMITTAL.
6. BOLLARD LOCATIONS TO BE SET WHEN EQUIPMENT LOCATION IS FINALIZED
7. WET UTILITIES AND APPURTENANCES LOCATIONS TO BE FINALIZED UPON FINAL SUBMITTAL



DRAWING REVISIONS TYPES:					1	PRE-BID	1	POST-BID	1	POST IFC
NO.	DATE	CADD	CHECK	APP'D	ISSUE / REVISION DESCRIPTION					

AUC LLC

90% REVIEW SET
NOT FOR
CONSTRUCTION



BOZEMAN OFFICE
1800 West Koch, Suite 6
Bozeman, MT 59715
Tel: (406) 586-8364
Fax: (406) 522-8460

CASPER OFFICE
900 Warner Court, Suite 150
Casper, WY 82601
Tel: (307) 265-0696
Fax: (307) 265-2498

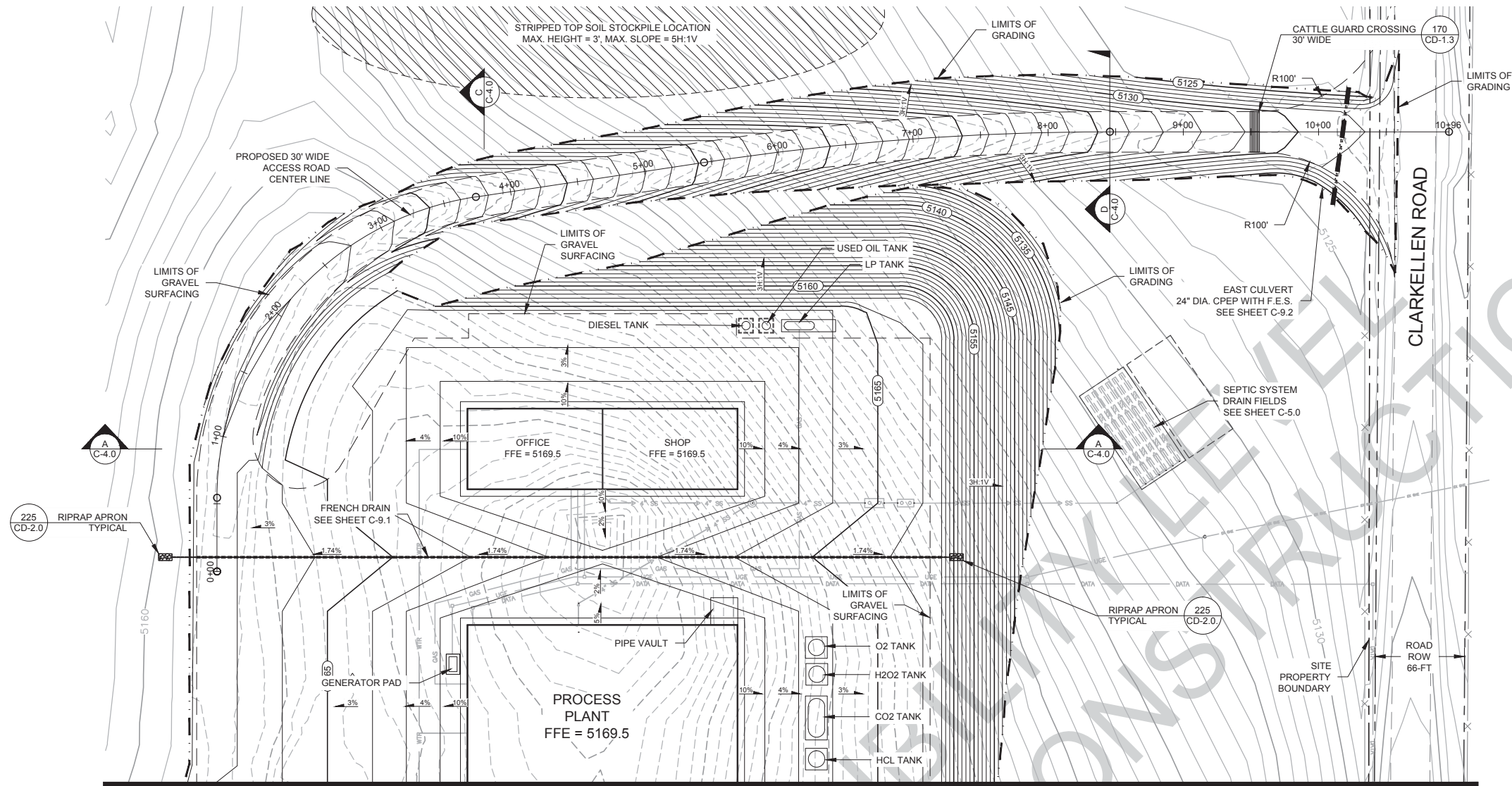
GREAT FALLS OFFICE
600 Central, Suite 204
Great Falls, MT 59401
Tel: (406) 952-0745

BUTTE OFFICE
521 East Front Street
Butte, MT 59701
Tel: (406) 491-0912

IF THIS BAR DOES
NOT EQUAL ONE
INCH ADJUST
SCALES
ACCORDINGLY

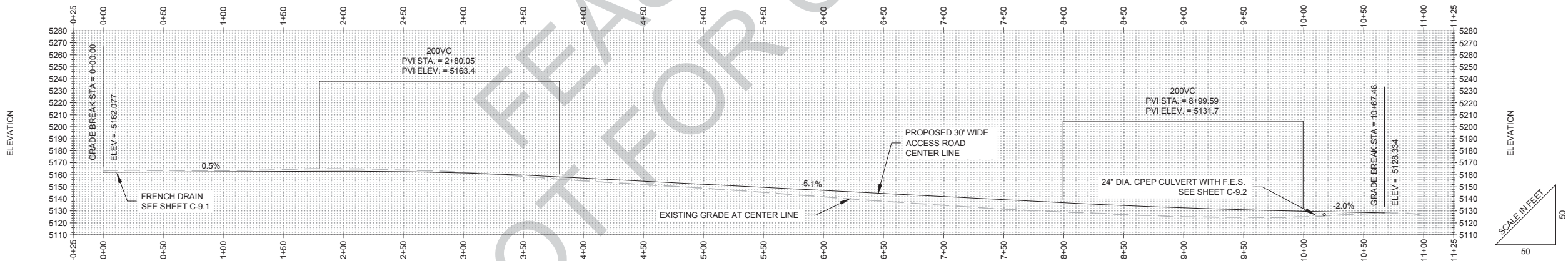
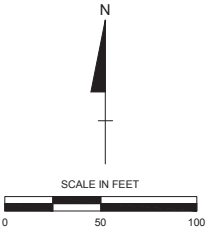
PROJECT NO.:	CADD:	CHECKED BY:	APPROVED BY:	PLOT DATE:
2012-250	TBK	RRU	SLH	10/2/2012 6:15 PM
GENERAL SITE PLAN: SOUTH HALF RENO CREEK PROJECT PREPARED FOR AUC LLC CAMPBELL COUNTY, WYOMING				

SHEET
C-2.2



- NOTES:
1. CULVERT SIZING AND DITCH LOCATIONS TO BE FINALIZED ON 95% SUBMITTAL WITH FINAL PLACEMENT AND LOCATIONS OF EQUIPMENT
 2. CONTRACTOR TO SMOOTH TRANSITIONS IN GRADING
 3. SLOPES TO BE SEEDED AND REVEGETATED AS PER THE SWPPP

SEE SHEET C-3.2



ACCESS ROAD PROFILE

DRAWING REVISIONS TYPES:									
1 PRE-BID					1 POST-BID				
NO.	DATE	CADD	CHECK	APP'D	ISSUE / REVISION DESCRIPTION	NO.	DATE	CADD	CHECK

AUC LLC

90% REVIEW SET
NOT FOR
CONSTRUCTION



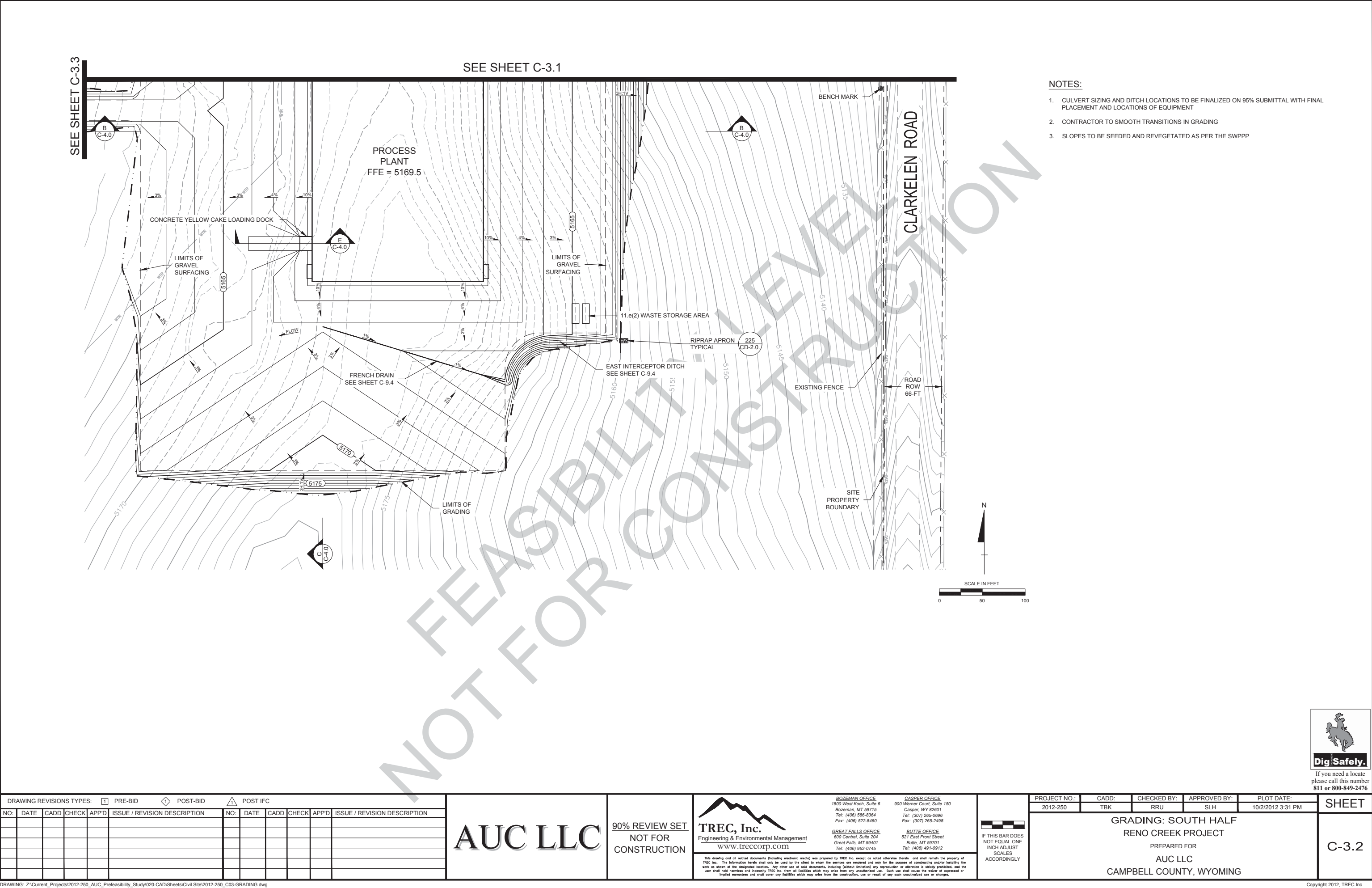
This drawing and all related documents (including electronic media) was prepared by TREC, Inc. except as noted otherwise therein and shall remain the property of TREC, Inc. The information herein shall only be used by the client to whom the services are rendered and only for the purpose of constructing and/or installing the work as shown at the designated location. Any other use of said documents, including (without limitation) any reproduction or alteration is strictly prohibited, and the user shall hold harmless and indemnify TREC, Inc. from all liabilities which may arise from any unauthorized use. Such use shall cause the waiver of expressed or implied warranties and shall cover any liability which may arise from the construction, use or result of any such unauthorized use or changes.



PROJECT NO.:	CADD:	CHECKED BY:	APPROVED BY:	PLOT DATE:
2012-250	TBK	RRU	SLH	10/2/2012 3:31 PM
GRADING: NORTH HALF RENO CREEK PROJECT PREPARED FOR AUC LLC CAMPBELL COUNTY, WYOMING				



C-3.1




- NOTES:
1. CULVERT SIZING AND DITCH LOCATIONS TO BE FINALIZED ON 95% SUBMITTAL WITH FINAL PLACEMENT AND LOCATIONS OF EQUIPMENT
 2. CONTRACTOR TO SMOOTH TRANSITIONS IN GRADING
 3. SLOPES TO BE SEEDED AND REVEGETATED AS PER THE SWPPP

DRAWING REVISIONS TYPES: 1 PRE-BID 2 POST-BID 3 POST IFC									
NO.	DATE	CADD	CHECK	APP'D	ISSUE / REVISION DESCRIPTION	NO.	DATE	CADD	CHECK

AUC LLC

90% REVIEW SET
NOT FOR
CONSTRUCTION



TREC, Inc.
Engineering & Environmental Management
www.treccorp.com

BOZEMAN OFFICE
1800 West Koch, Suite 6
Bozeman, MT 59715
Tel: (406) 596-8364
Fax: (406) 522-8460

GREAT FALLS OFFICE
600 Central, Suite 204
Great Falls, MT 59401
Tel: (406) 952-0745

CASPER OFFICE
900 Warner Court, Suite 150
Casper, WY 82601
Tel: (307) 265-0696
Fax: (307) 265-2498

BUTTE OFFICE
521 East Front Street
Butte, MT 59701
Tel: (406) 491-0912

PROJECT NO.: 2012-250

CADD: TBK

CHECKED BY: RRU

APPROVED BY: SLH

PLOT DATE: 10/2/2012 3:31 PM

GRADING: SOUTH HALF
RENO CREEK PROJECT


PREPARED FOR
AUC LLC


CAMPBELL COUNTY, WYOMING

SHEET

C-3.2

IF THIS BAR DOES NOT EQUAL ONE INCH ADJUST SCALES ACCORDINGLY

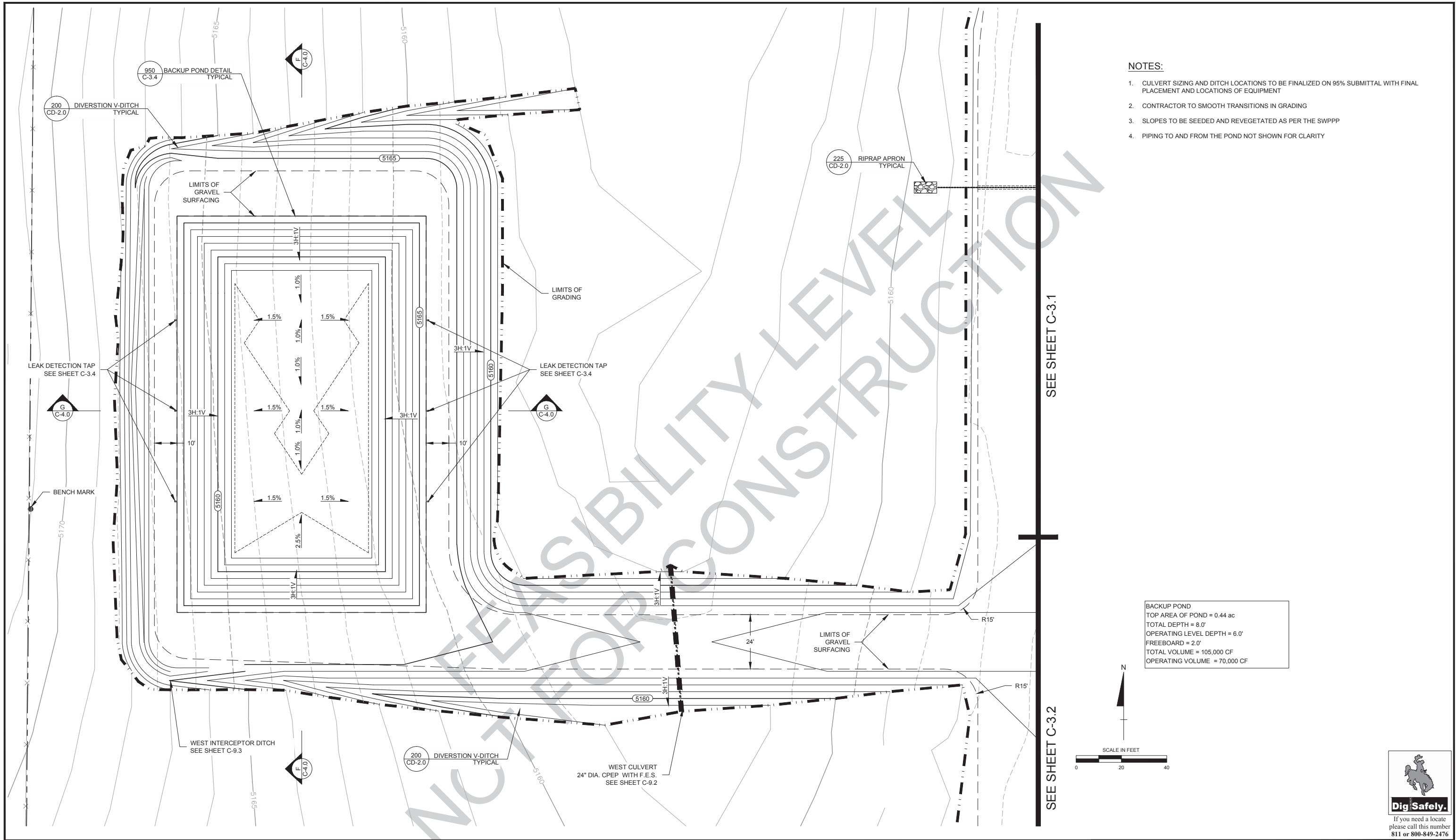




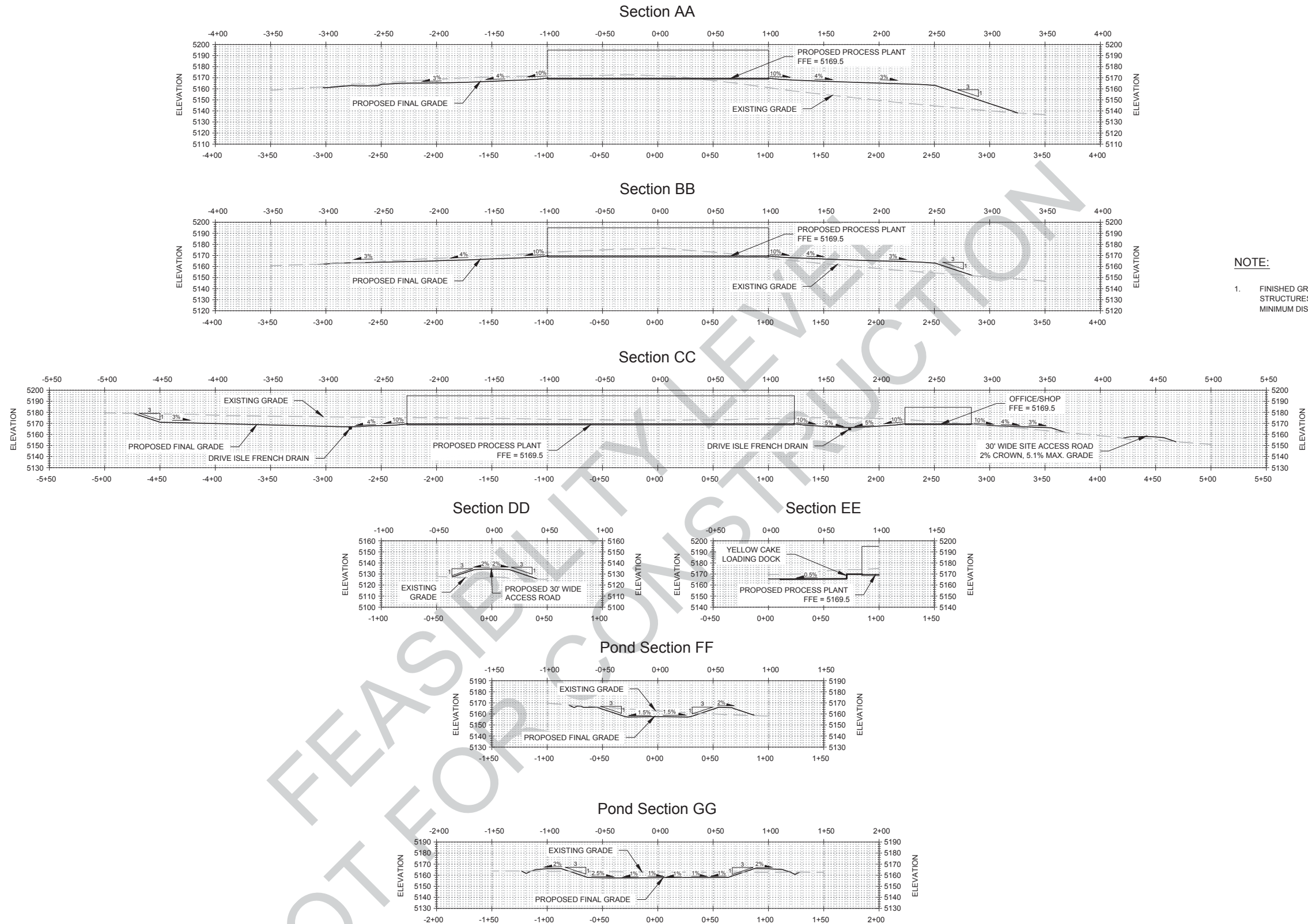
Dig Safely.

If you need a locate please call this number 811 or 800-849-2476

DRAWING: Z:\Current_Projects\2012-250_AUC_Prefeasibility_Study\020-CAD\Sheets\Civil Site\2012-250_C03-GRADING.dwg Copyright 2012, TREC Inc.



DRAWING REVISIONS TYPES: 1 PRE-BID 2 POST-BID 3 POST IFC										PROJECT NO.: 2012-250 CADD: TBK CHECKED BY: RRU APPROVED BY: SLH PLOT DATE: 10/2/2012 3:31 PM										SHEET			
NO:	DATE	CADD	CHECK	APP'D	ISSUE / REVISION DESCRIPTION	NO:	DATE	CADD	CHECK	APP'D	ISSUE / REVISION DESCRIPTION	GRADING: BACKUP POND											
												RENO CREEK PROJECT											
												PREPARED FOR											
												AUC LLC											
												CAMPBELL COUNTY, WYOMING											
												C-3.3											



DRAWING REVISIONS TYPES: 1 PRE-BID 2 POST-BID 3 POST IFC									
NO.	DATE	CADD	CHECK	APP'D	ISSUE / REVISION DESCRIPTION	NO.	DATE	CADD	CHECK

AUC LLC

90% REVIEW SET
NOT FOR
CONSTRUCTION



Engineering & Environmental Management
www.treccorp.com

This drawing and all related documents (including electronic media) was prepared by TREC, Inc. except as noted otherwise therein and shall remain the property of TREC, Inc. The information herein shall only be used by the client to whom the services are rendered and only for the purpose of constructing and/or installing the work as shown at the designated location. Any other use of said documents, including (without limitation) any reproduction or alteration is strictly prohibited, and the user shall hold harmless and indemnify TREC, Inc. from all liabilities which may arise from any unauthorized use. Such use shall cause the waiver of expressed or implied warranties and shall cover any liability which may arise from the construction, use or result of any such unauthorized use or changes.

BOZEMAN OFFICE
1800 West Koch, Suite 6
Bozeman, MT 59715
Tel: (406) 596-8364
Fax: (406) 522-8460

GREAT FALLS OFFICE
600 Central, Suite 204
Great Falls, MT 59401
Tel: (406) 952-0745

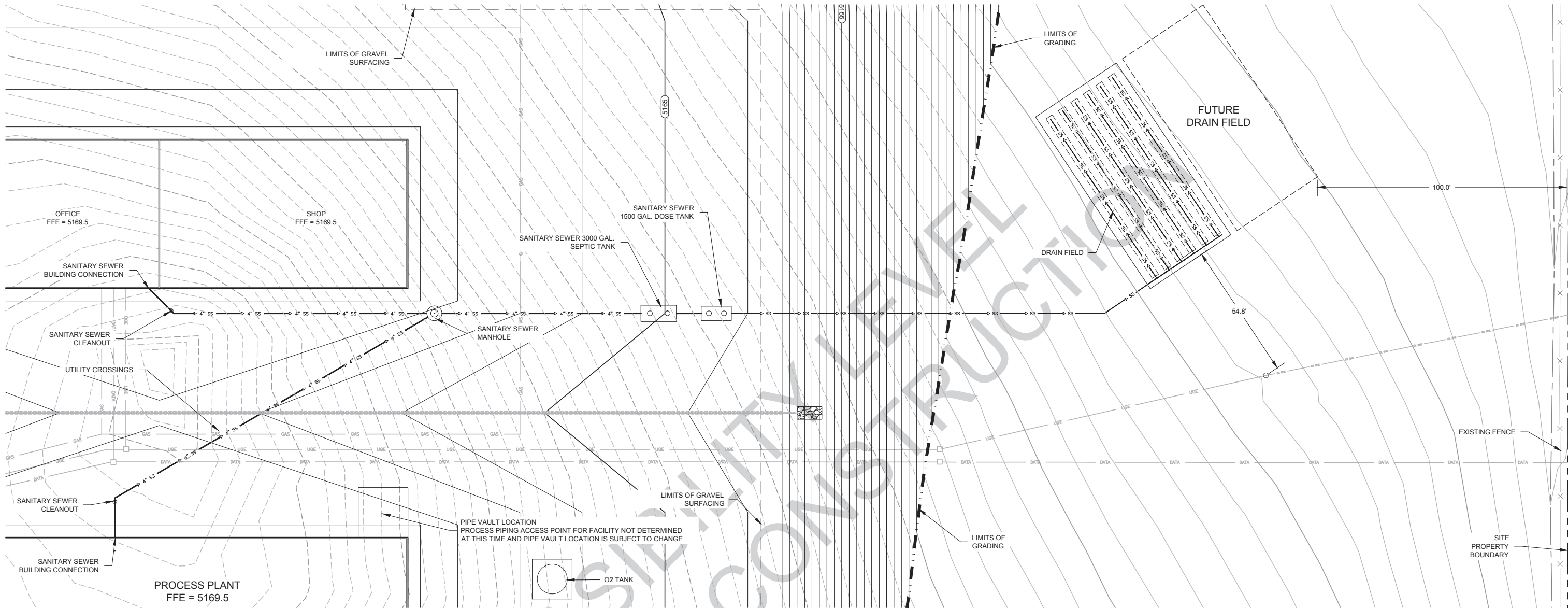
CASPER OFFICE
900 Warner Court, Suite 150
Casper, WY 82601
Tel: (307) 265-0696
Fax: (307) 265-2498

BUTTE OFFICE
521 East Front Street
Butte, MT 59701
Tel: (406) 491-0912

IF THIS BAR DOES
NOT EQUAL ONE
INCH ADJUST
SCALES
ACCORDINGLY

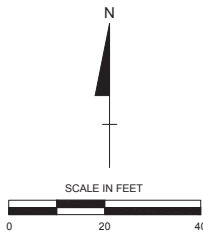
PROJECT NO.:	CADD:	CHECKED BY:	APPROVED BY:	PLOT DATE:
2012-250	TBK	RRU	SLH	9/27/2012 12:08 PM
SITE CROSS SECTIONS RENO CREEK PROJECT PREPARED FOR AUC LLC CAMPBELL COUNTY, WYOMING				

SHEET
C-4.0



NOTES:

- 1. EXISTING CONDITIONS INFORMATION PROVIDED BY SURVEY PERFORMED BY INBERG-MILLERS ENGINEERS IN JUNE 2012
- 2. EXISTING CONTOURS REFLECT POST-DEMOLITION AND STRIPPING CONDITIONS WITHIN LIMITS OF GRADING
- 3. POST STRIPPING (4" DEPTH) EXISTING CONTOURS SHOWN AS DASHED LINES
- 4. CONTRACTOR IS RESPONSIBLE TO FIELD VERIFY ALL UTILITY LOCATIONS PRIOR TO PERFORMING GRADING ACTIVITIES
- 5. ALL TRENCHING AND BACKFILL IS TO BE PERFORMED IN ACCORDANCE WITH THE RECOMMENDATIONS MADE IN THE GEOTECHNICAL REPORT BY INBERG-MILLER DATED JULY 9, 2012
- 6. ALL SANITARY SEWER PIPES ARE TO BE A MINIMUM OF 36" BELOW FINISHED GRADE IN ACCORDANCE WITH CAMPBELL COUNTY REGULATIONS
- 7. SANITARY SEWER FEATURES ARE CONCEPTUAL AND SUBJECT TO CHANGE PRIOR TO 95% SUBMITTAL
- 8. NON-SANITARY SEWER PROPOSED UTILITIES SHOWN SHADED BACK TO PREVENT VISUAL CONFLICT WITH SANITARY SEWER LINES



DRAWING REVISIONS TYPES:					1	PRE-BID	1	POST-BID	1	POST IFC
NO.	DATE	CADD	CHECK	APP'D	ISSUE / REVISION DESCRIPTION					

AUC LLC

90% REVIEW SET
NOT FOR
CONSTRUCTION

TREC, Inc.

Engineering & Environmental Management

www.treccorp.com

BOZEMAN OFFICE

1800 West Koch, Suite 6

Bozeman, MT 59715

Tel: (406) 596-8364

Fax: (406) 522-8460

CASPER OFFICE

900 Warner Court, Suite 150

Casper, WY 82601

Tel: (307) 265-0696

Fax: (307) 265-2498

GREAT FALLS OFFICE

600 Central, Suite 204

Great Falls, MT 59401

Tel: (406) 952-0745

BUTTE OFFICE

521 East Front Street

Butte, MT 59701

Tel: (406) 491-0912

IF THIS BAR DOES
NOT EQUAL ONE
INCH ADJUST
SCALES
ACCORDINGLY

PROJECT NO.:	CADD:	CHECKED BY:	APPROVED BY:	PLOT DATE:
2012-250	TBK	RRU	SLH	9/28/2012 5:20 PM

SANITARY SEWER: INDEX

RENO CREEK PROJECT

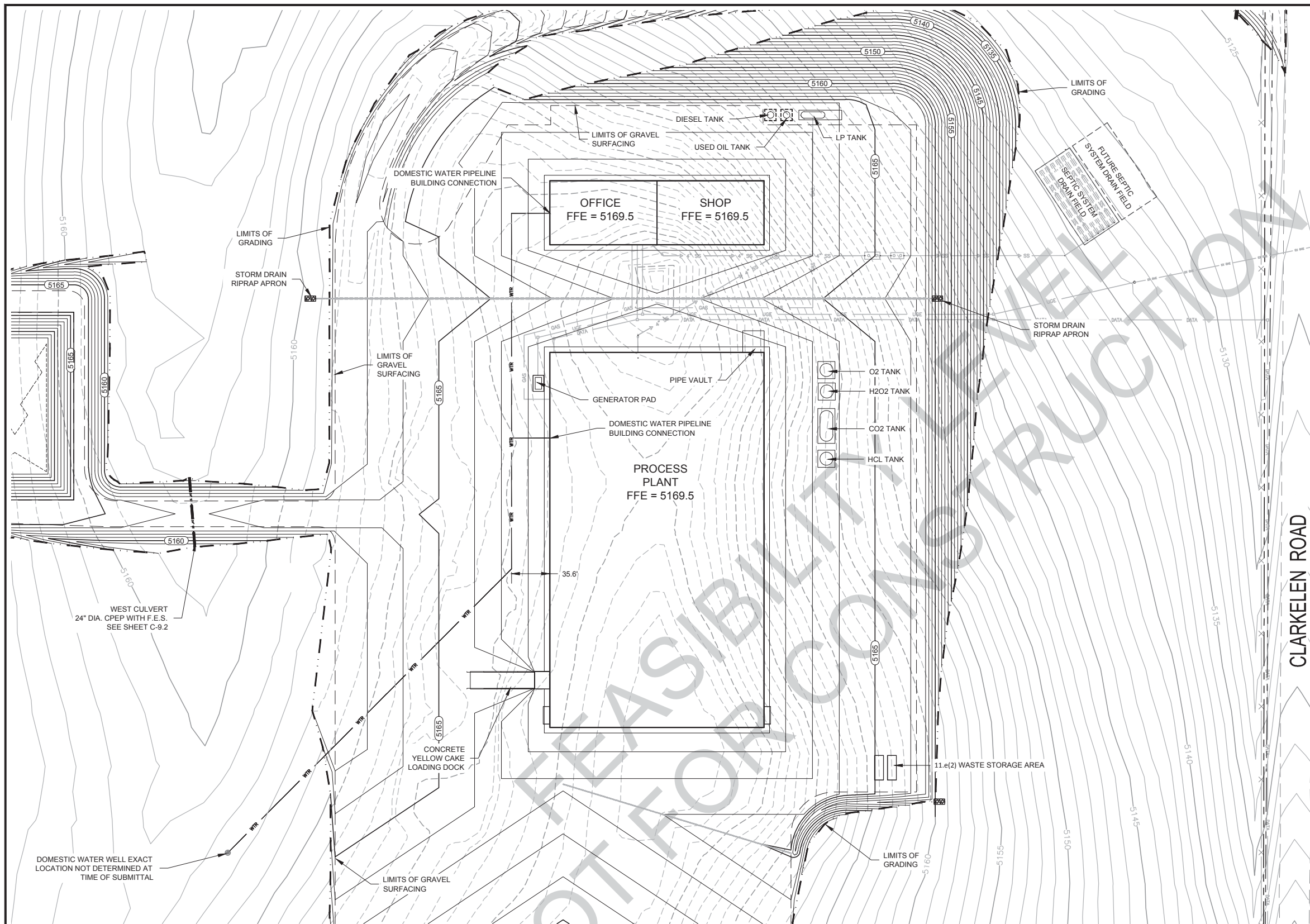
PREPARED FOR

AUC LLC

CAMPBELL COUNTY, WYOMING

SHEET

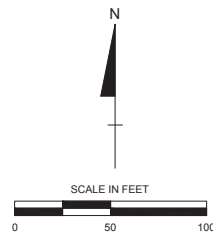
C-5.0



CLARKELLEN ROAD

NOTES:

1. CONTRACTOR IS RESPONSIBLE TO FIELD VERIFY ALL UTILITY LOCATIONS PRIOR TO PERFORMING GRADING ACTIVITIES
2. ALL TRENCHING AND BACKFILL IS TO BE PERFORMED IN ACCORDANCE WITH THE RECOMMENDATIONS MADE IN THE GEOTECHNICAL REPORT BY INBERG-MILLER DATED JULY 9, 2012
3. ALL WATER UTILITY PIPELINES ARE TO BE A MINIMUM OF 48\"/>



DRAWING REVISIONS TYPES:					1	PRE-BID	1	POST-BID	1	POST IFC
NO.	DATE	CADD	CHECK	APP'D	ISSUE / REVISION DESCRIPTION					

AUC LLC

90% REVIEW SET
NOT FOR
CONSTRUCTION

TREC, Inc.
Engineering & Environmental Management
www.trecorp.com

This drawing and all related documents (including electronic media) was prepared by TREC Inc. except as noted otherwise therein and shall remain the property of TREC Inc. The information herein shall only be used by the client to whom the services are rendered and only for the purpose of constructing and/or installing the work as shown at the designated location. Any other use of said documents, including (without limitation) any reproduction or alteration is strictly prohibited, and the user shall hold harmless and indemnify TREC Inc. from all liabilities which may arise from any unauthorized use. Such use shall cause the waiver of expressed or implied warranties and shall cover any liability which may arise from the construction, use or result of any such unauthorized use or changes.

BOZEMAN OFFICE
1800 West Koch, Suite 6
Bozeman, MT 59715
Tel: (406) 586-8364
Fax: (406) 522-8460

CASPER OFFICE
900 Warner Court, Suite 150
Casper, WY 82601
Tel: (307) 265-0696
Fax: (307) 265-2498

GREAT FALLS OFFICE
600 Central, Suite 204
Great Falls, MT 59401
Tel: (406) 952-0745

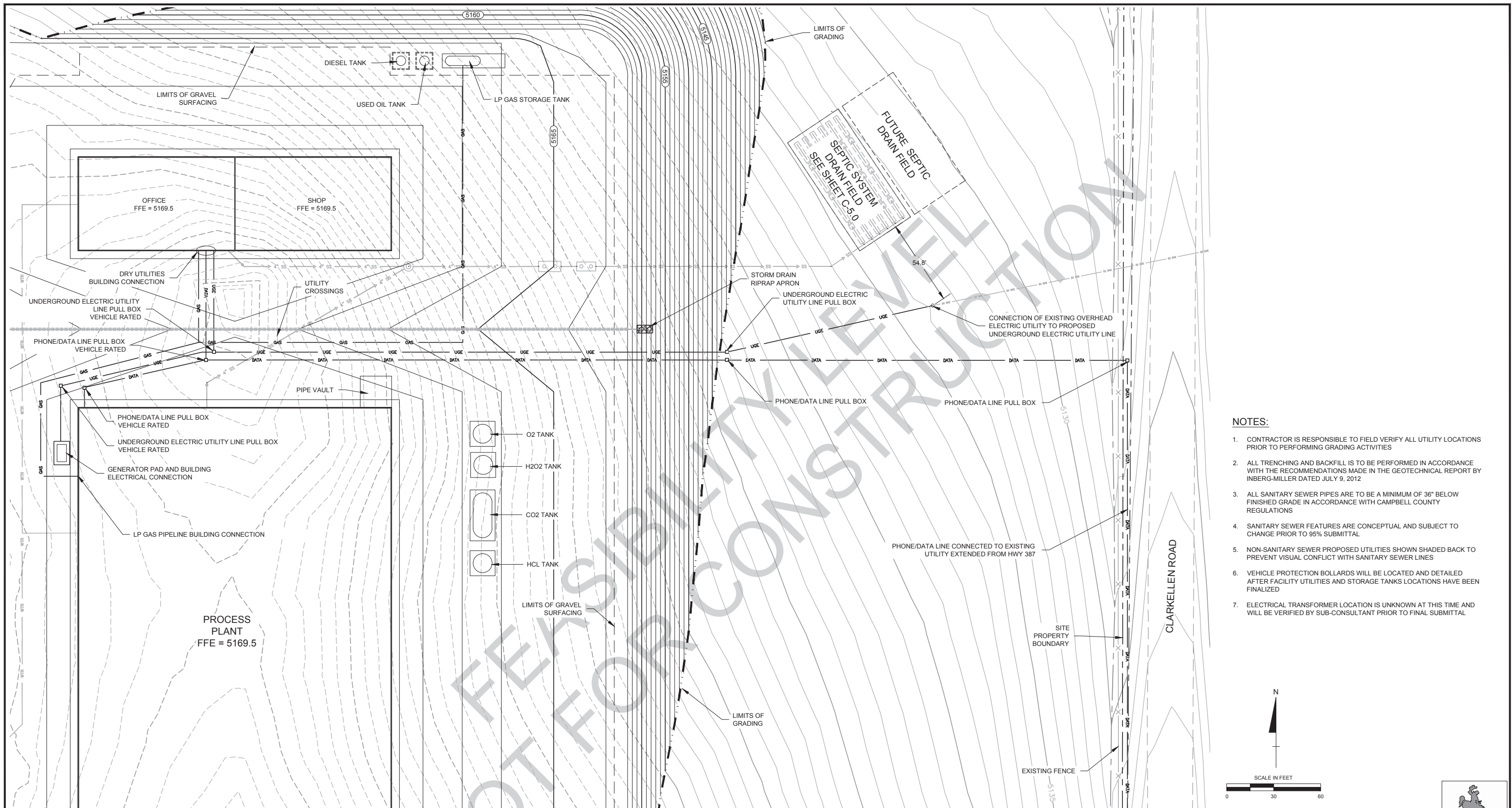
BUTTE OFFICE
521 East Front Street
Butte, MT 59701
Tel: (406) 491-0912

PROJECT NO.: 2012-250
CADD: TBK
CHECKED BY: RRU
APPROVED BY: SLH
PLOT DATE: 10/2/2012 4:51 PM

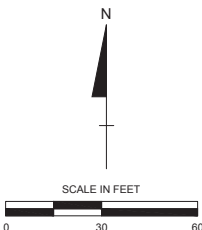
**WET UTILITIES
RENO CREEK PROJECT**
PREPARED FOR
AUC LLC
CAMPBELL COUNTY, WYOMING

SHEET

C-6.0



- NOTES:**
1. CONTRACTOR IS RESPONSIBLE TO FIELD VERIFY ALL UTILITY LOCATIONS PRIOR TO PERFORMING GRADING ACTIVITIES
 2. ALL TRENCHING AND BACKFILL IS TO BE PERFORMED IN ACCORDANCE WITH THE RECOMMENDATIONS MADE IN THE GEOTECHNICAL REPORT BY INBERG-MILLER DATED JULY 9, 2012
 3. ALL SANITARY SEWER PIPES ARE TO BE A MINIMUM OF 36" BELOW FINISHED GRADE IN ACCORDANCE WITH CAMPBELL COUNTY REGULATIONS
 4. SANITARY SEWER FEATURES ARE CONCEPTUAL AND SUBJECT TO CHANGE PRIOR TO 95% SUBMITTAL
 5. NON-SANITARY SEWER PROPOSED UTILITIES SHOWN SHADED BACK TO PREVENT VISUAL CONFLICT WITH SANITARY SEWER LINES
 6. VEHICLE PROTECTION BOLLARDS WILL BE LOCATED AND DETAILED AFTER FACILITY UTILITIES AND STORAGE TANKS LOCATIONS HAVE BEEN FINALIZED
 7. ELECTRICAL TRANSFORMER LOCATION IS UNKNOWN AT THIS TIME AND WILL BE VERIFIED BY SUB-CONSULTANT PRIOR TO FINAL SUBMITTAL



DRAWING REVISIONS TYPES:					1	PRE-BID	1	POST-BID	1	POST IFC
NO.	DATE	CADD	CHECK	APP'D	ISSUE / REVISION DESCRIPTION					

AUC LLC

90% REVIEW SET
NOT FOR
CONSTRUCTION



BOZEMAN OFFICE
1800 West Koch, Suite 6
Bozeman, MT 59715
Tel: (406) 596-8364
Fax: (406) 522-8460

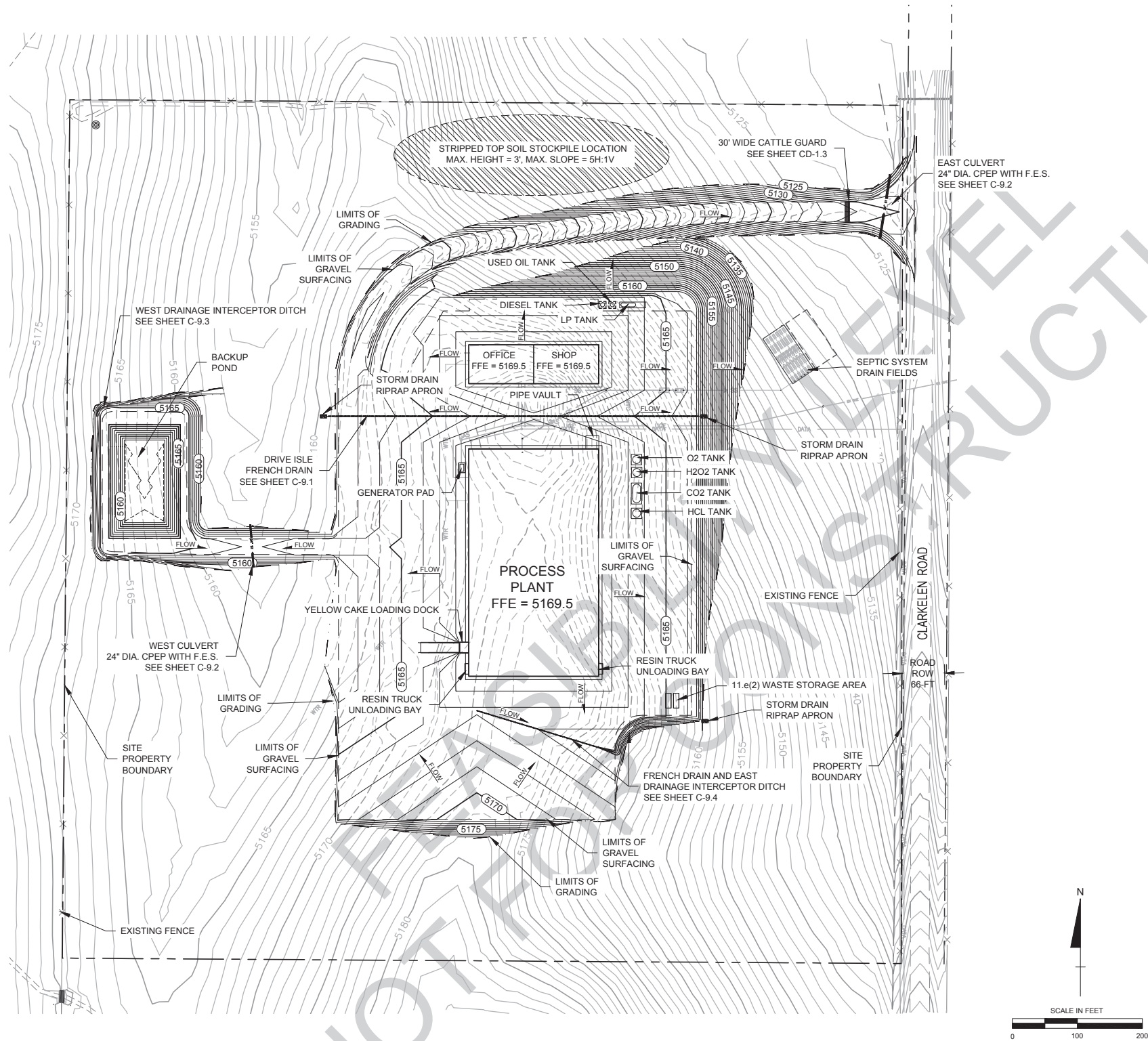
CASPER OFFICE
900 Warner Court, Suite 150
Casper, WY 82601
Tel: (307) 265-0696
Fax: (307) 265-2498

GREAT FALLS OFFICE
600 Central, Suite 204
Great Falls, MT 59401
Tel: (406) 952-0745

BUTTE OFFICE
521 East Front Street
Butte, MT 59701
Tel: (406) 491-0912

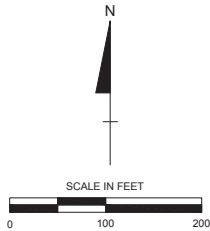
IF THIS BAR DOES
NOT EQUAL ONE
INCH ADJUST
SCALES
ACCORDINGLY

PROJECT NO.:	CADD:	CHECKED BY:	APPROVED BY:	PLOT DATE:	SHEET
2012-250	TBK	RRU	SLH	10/2/2012 10:12 AM	C-7.0
DRY UTILITIES RENO CREEK PROJECT PREPARED FOR AUC LLC CAMPBELL COUNTY, WYOMING					



NOTES:

1. CULVERT SIZING AND DITCH LOCATIONS TO BE FINALIZED ON 95% SUBMITTAL WITH FINAL PLACEMENT AND LOCATIONS OF EQUIPMENT



DRAWING REVISIONS TYPES: 1 PRE-BID 2 POST-BID 3 POST IFC									
NO.	DATE	CADD	CHECK	APP'D	ISSUE / REVISION DESCRIPTION	NO.	DATE	CADD	CHECK

AUC LLC

90% REVIEW SET
NOT FOR
CONSTRUCTION

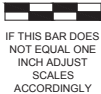


BOZEMAN OFFICE
1800 West Koch, Suite 6
Bozeman, MT 59715
Tel: (406) 586-8364
Fax: (406) 522-8460

CASPER OFFICE
900 Warner Court, Suite 150
Casper, WY 82601
Tel: (307) 265-0696
Fax: (307) 265-2498

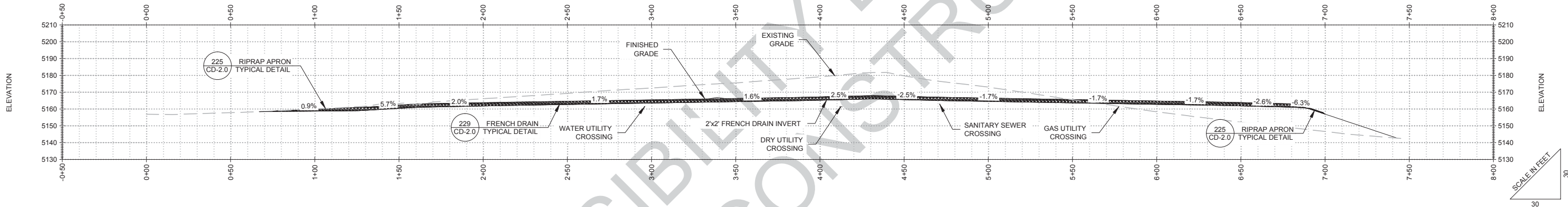
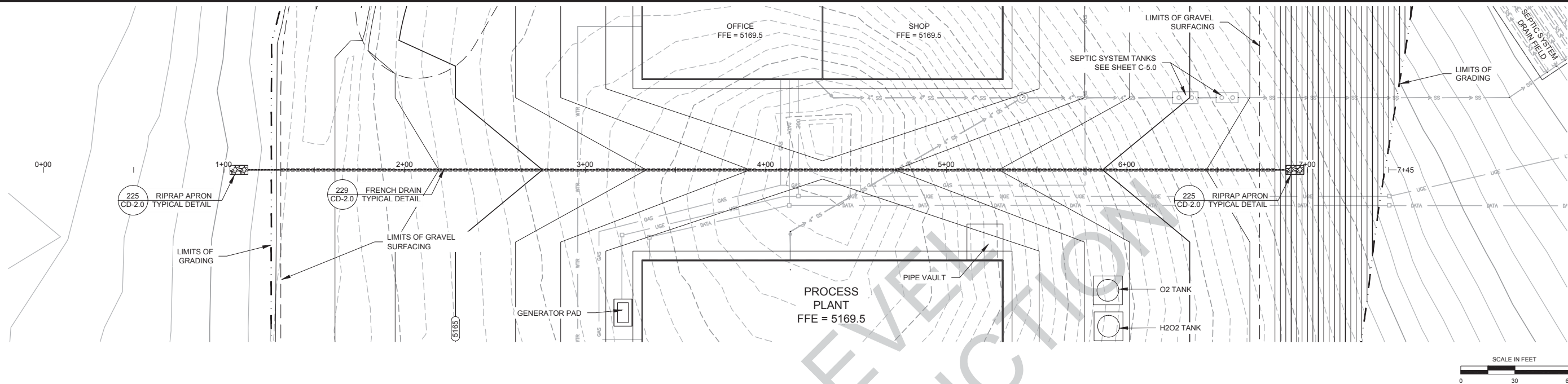
GREAT FALLS OFFICE
600 Central, Suite 204
Great Falls, MT 59401
Tel: (406) 952-0745

BUTTE OFFICE
521 East Front Street
Butte, MT 59701
Tel: (406) 491-0912



PROJECT NO.:	CADD:	CHECKED BY:	APPROVED BY:	PLOT DATE:
2012-250	TBK	RRU	SLH	10/2/2012 4:51 PM
STORM DRAINAGE: INDEX RENO CREEK PROJECT PREPARED FOR AUC LLC CAMPBELL COUNTY, WYOMING				

SHEET
C-9.0



- NOTES:**
- CONTRACTOR IS RESPONSIBLE TO FIELD VERIFY ALL UTILITY LOCATIONS PRIOR TO PERFORMING GRADING ACTIVITIES
 - ALL TRENCHING AND BACKFILL IS TO BE PERFORMED IN ACCORDANCE WITH THE RECOMMENDATIONS MADE IN THE GEOTECHNICAL REPORT BY INBERG-MILLER DATED JULY 9, 2012
 - SUB SURFACE UTILITIES SHOWN SHADED BACK TO PREVENT VISUAL CONFLICT WITH STORM WATER DRAINAGE FEATURES



DRAWING REVISIONS TYPES:					1	PRE-BID	1	POST-BID	1	POST IFC
NO.	DATE	CADD	CHECK	APP'D	ISSUE / REVISION DESCRIPTION					

AUC LLC

90% REVIEW SET
NOT FOR
CONSTRUCTION



BOZEMAN OFFICE
1800 West Koch, Suite 6
Bozeman, MT 59715
Tel: (406) 596-8364
Fax: (406) 522-8460

CASPER OFFICE
900 Warner Court, Suite 150
Casper, WY 82601
Tel: (307) 265-0696
Fax: (307) 265-2498

GREAT FALLS OFFICE
600 Central, Suite 204
Great Falls, MT 59401
Tel: (406) 952-0745

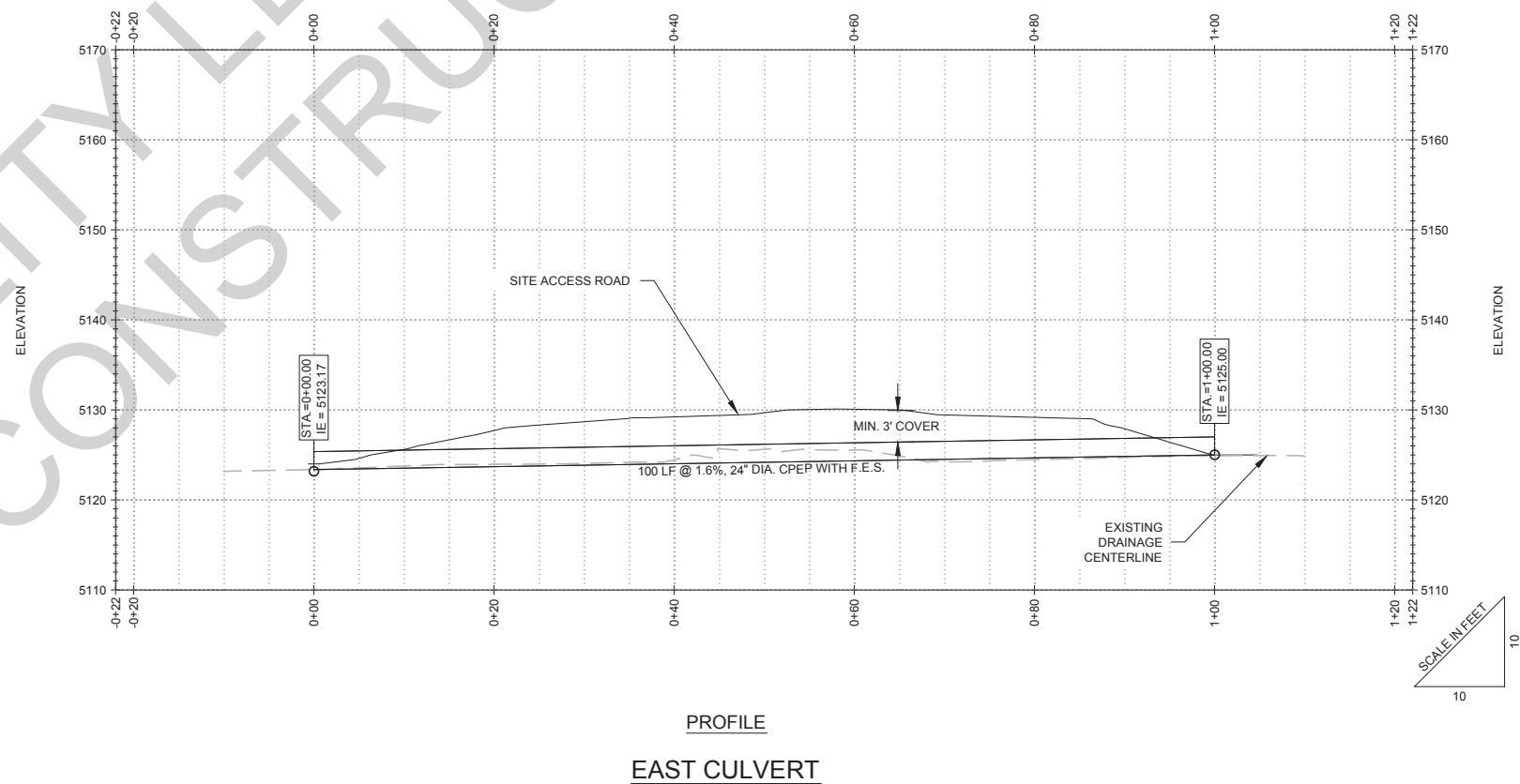
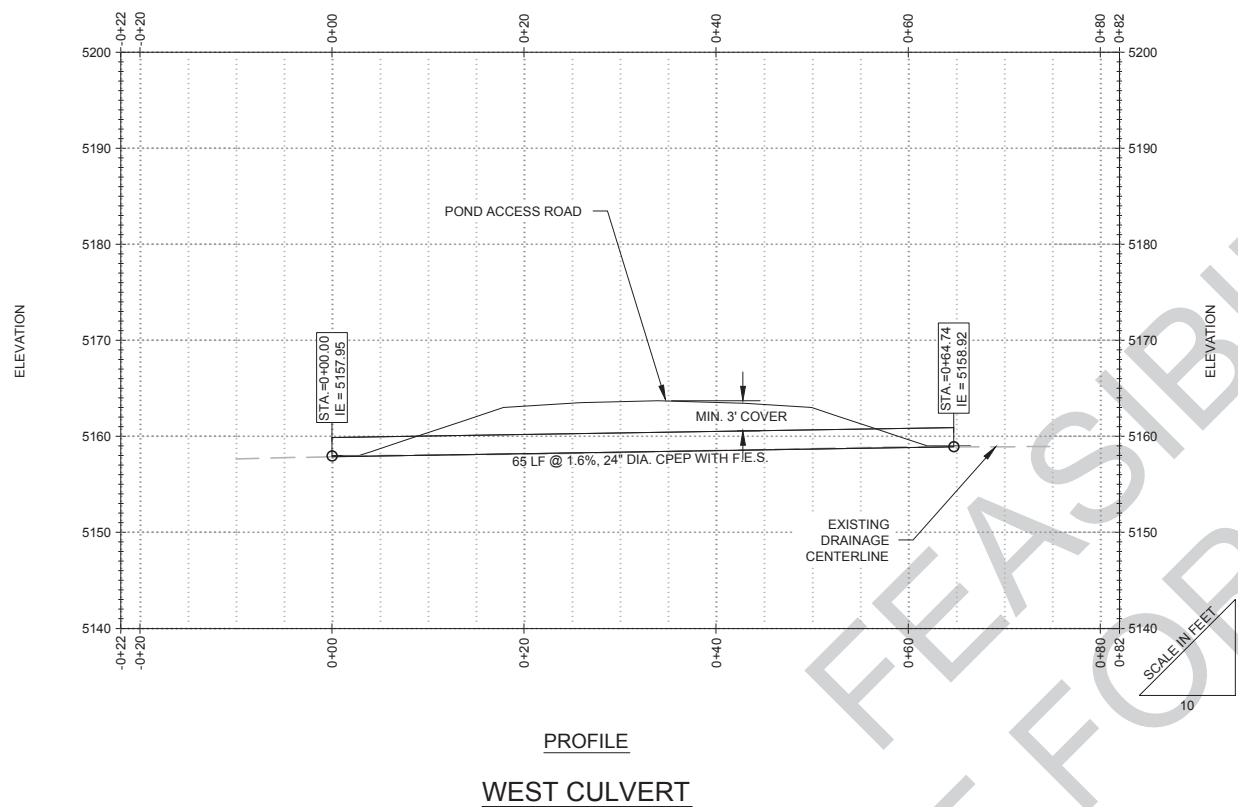
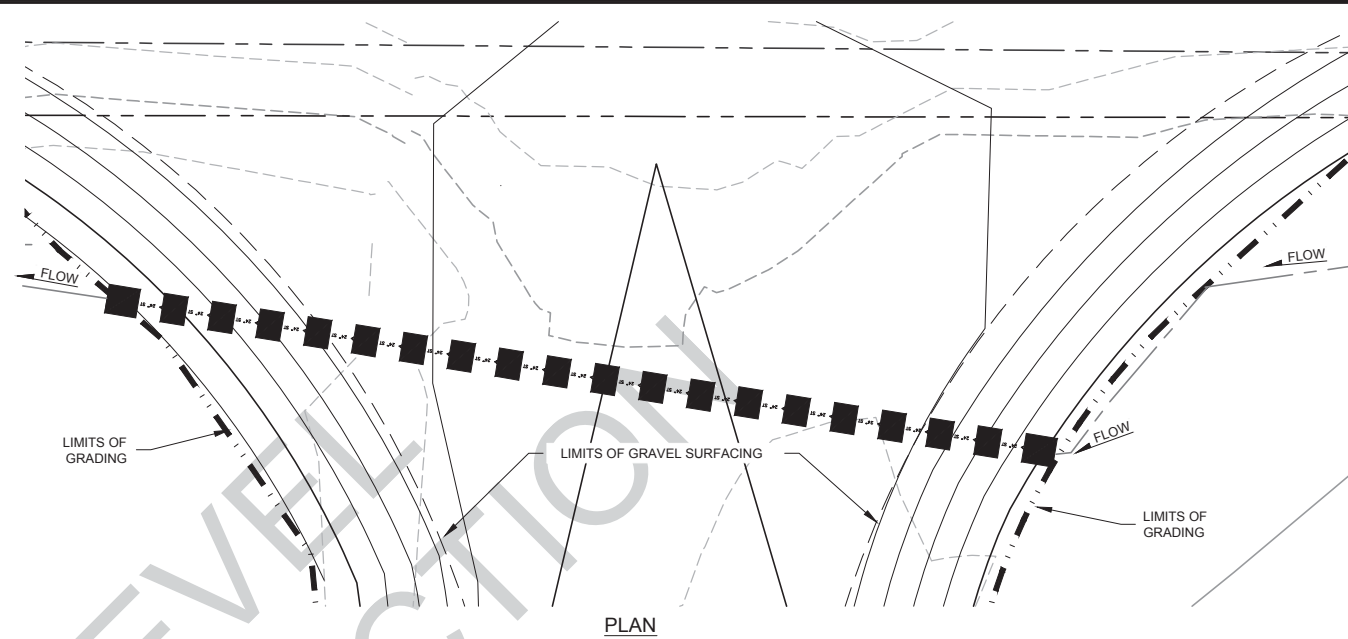
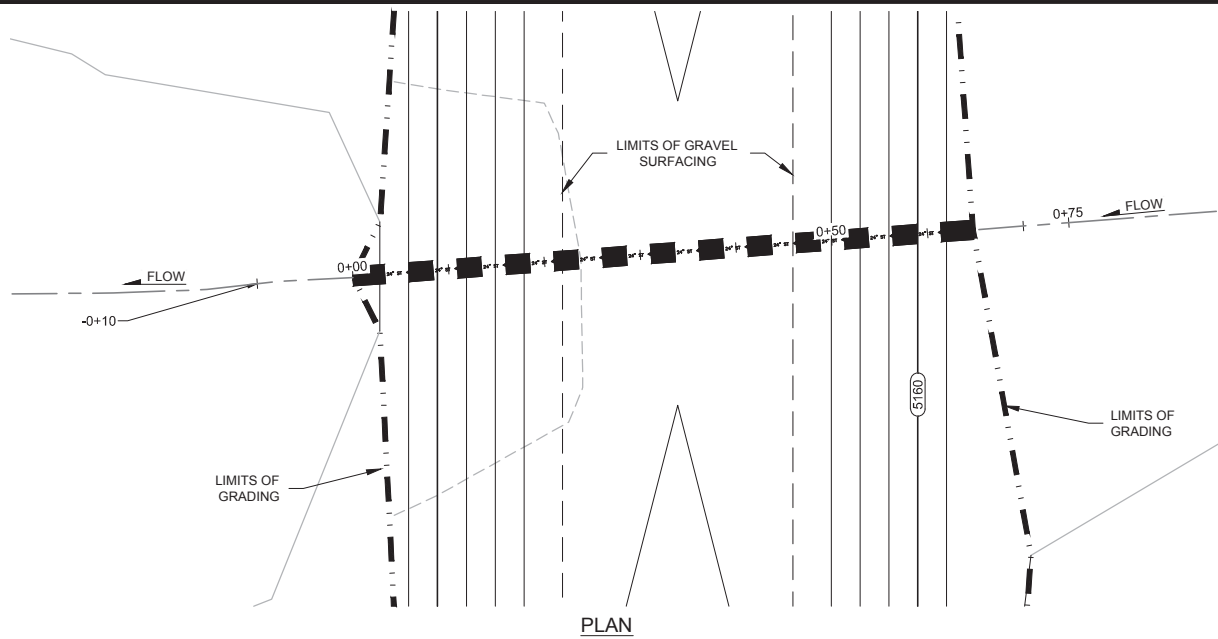
BUTTE OFFICE
521 East Front Street
Butte, MT 59701
Tel: (406) 491-0912



PROJECT NO.:	CADD:	CHECKED BY:	APPROVED BY:	PLOT DATE:
2012-250	TBK	RRU	SLH	10/2/2012 4:51 PM
STORM DRAINAGE: DRIVE ISLE FRENCH DRAIN RENO CREEK PROJECT				
PREPARED FOR AUC LLC CAMPBELL COUNTY, WYOMING				

SHEET

C-9.1



NOTES:

1. CULVERT SIZING AND DITCH LOCATIONS TO BE FINALIZED ON 95% SUBMITTAL WITH FINAL PLACEMENT AND LOCATIONS OF EQUIPMENT

DRAWING REVISIONS TYPES:					1	PRE-BID	1	POST-BID	1	POST IFC
NO.	DATE	CADD	CHECK	APP'D	ISSUE / REVISION DESCRIPTION					

AUC LLC

90% REVIEW SET
NOT FOR
CONSTRUCTION

TREC, Inc.
Engineering & Environmental Management
www.trecorp.com

This drawing and all related documents (including electronic media) was prepared by TREC Inc. except as noted otherwise therein and shall remain the property of TREC Inc. The information herein shall only be used by the client to whom the services are rendered and only for the purpose of constructing and/or installing the work as shown at the designated location. Any other use of said documents, including (without limitation) any reproduction or alteration is strictly prohibited, and the user shall hold harmless and indemnify TREC Inc. from all liabilities which may arise from any unauthorized use. Such use shall cause the waiver of expressed or implied warranties and shall cover any liabilities which may arise from the construction, use or result of any such unauthorized use or changes.

BOZEMAN OFFICE
1800 West Koch, Suite 6
Bozeman, MT 59715
Tel: (406) 596-8364
Fax: (406) 522-8460

CASPER OFFICE
900 Werner Court, Suite 150
Casper, WY 82601
Tel: (307) 265-0696
Fax: (307) 265-0498

GREAT FALLS OFFICE
600 Central, Suite 204
Great Falls, MT 59401
Tel: (406) 952-0745

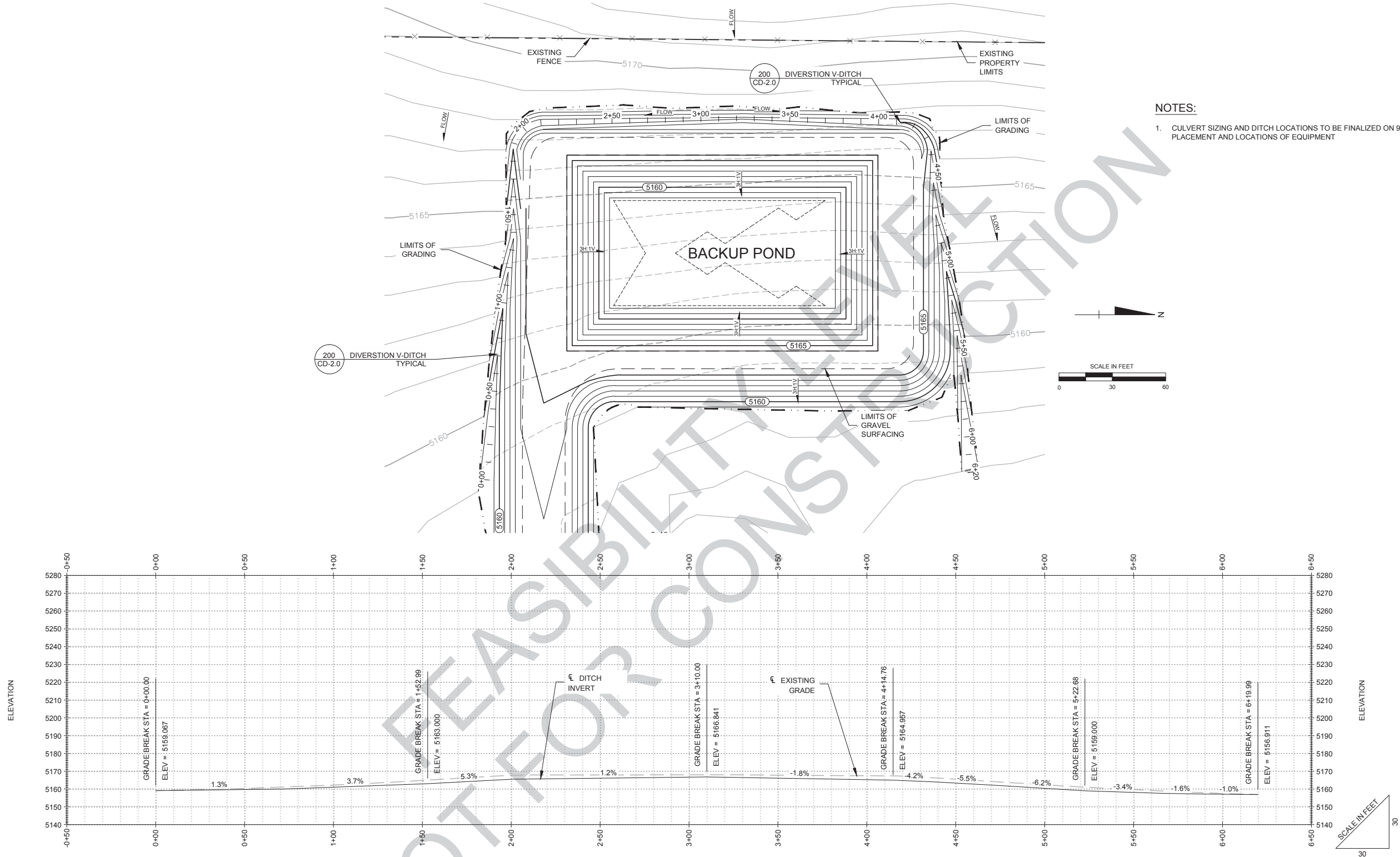
BUTTE OFFICE
521 East Front Street
Butte, MT 59701
Tel: (406) 491-0912

IF THIS BAR DOES
NOT EQUAL ONE
INCH ADJUST
SCALES
ACCORDINGLY

PROJECT NO.:	CADD:	CHECKED BY:	APPROVED BY:	PLOT DATE:
2012-250	TBK	RRU	SLH	10/2/2012 4:51 PM
STORM DRAINAGE: ACCESS ROAD CULVERTS RENO CREEK PROJECT				
PREPARED FOR AUC LLC CAMPBELL COUNTY, WYOMING				



SHEET
C-9.2



- NOTES:
1. CULVERT SIZING AND DITCH LOCATIONS TO BE FINALIZED ON 95% SUBMITTAL WITH FINAL PLACEMENT AND LOCATIONS OF EQUIPMENT

DRAWING REVISIONS TYPES: 1 PRE-BID 2 POST-BID 3 POST IFC									
NO.	DATE	CADD	CHECK	APP'D	ISSUE / REVISION DESCRIPTION	NO.	DATE	CADD	CHECK

AUC LLC

90% REVIEW SET
NOT FOR
CONSTRUCTION



TREC, Inc.
Engineering & Environmental Management
www.treccorp.com

BOZEMAN OFFICE
1800 West Koch, Suite 6
Bozeman, MT 59715
Tel: (406) 596-8364
Fax: (406) 522-8460

GREAT FALLS OFFICE
600 Central, Suite 204
Great Falls, MT 59401
Tel: (406) 952-0745

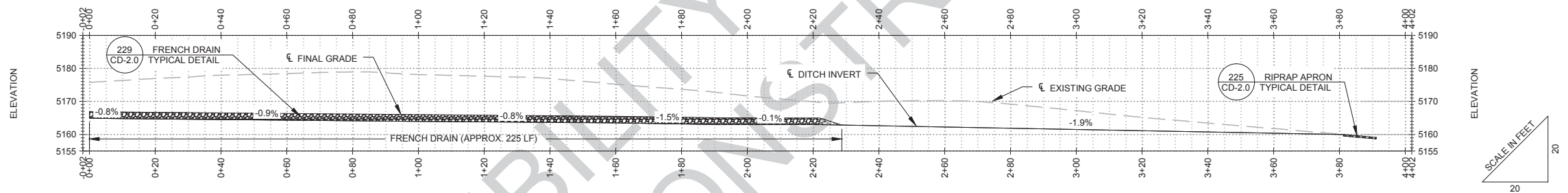
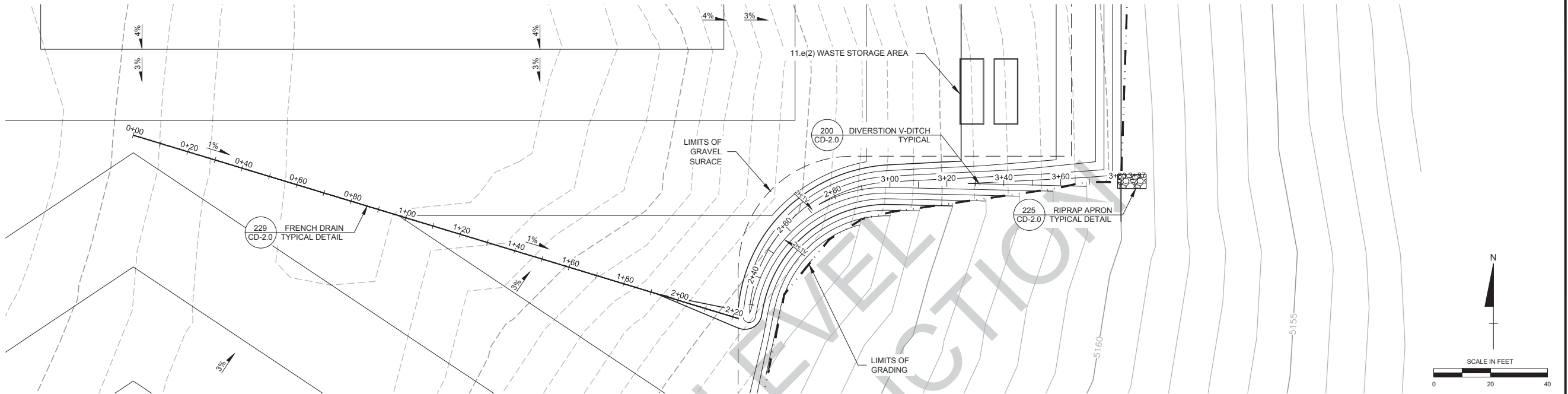
CASPER OFFICE
900 Warner Court, Suite 150
Casper, WY 82601
Tel: (307) 265-0696
Fax: (307) 265-2498

BUTTE OFFICE
521 East Front Street
Butte, MT 59701
Tel: (406) 491-0912

IF THIS BAR DOES
NOT EQUAL ONE
INCH ADJUST
SCALES
ACCORDINGLY

PROJECT NO.:	CADD:	CHECKED BY:	APPROVED BY:	PLOT DATE:
2012-250	TBK	RRU	SLH	10/2/2012 4:51 PM
STORM DRAINAGE: WEST INTERCEPTOR DITCH RENO CREEK PROJECT PREPARED FOR AUC LLC CAMPBELL COUNTY, WYOMING				





- NOTES:
- CULVERT SIZING AND DITCH LOCATIONS TO BE FINALIZED ON 95% SUBMITTAL WITH FINAL PLACEMENT AND LOCATIONS OF EQUIPMENT
 - CONTRACTOR TO SMOOTH TRANSITIONS

DRAWING REVISIONS TYPES:					1	PRE-BID	1	POST-BID	1	POST IFC
NO.	DATE	CADD	CHECK	APP'D	ISSUE / REVISION DESCRIPTION					

AUC LLC

90% REVIEW SET
NOT FOR
CONSTRUCTION

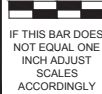


BOZEMAN OFFICE
1800 West Koch, Suite 6
Bozeman, MT 59715
Tel: (406) 596-8364
Fax: (406) 522-8460

GREAT FALLS OFFICE
600 Central, Suite 204
Great Falls, MT 59401
Tel: (406) 952-0745

CASPER OFFICE
900 Warner Court, Suite 150
Casper, WY 82601
Tel: (307) 265-0696
Fax: (307) 265-2498

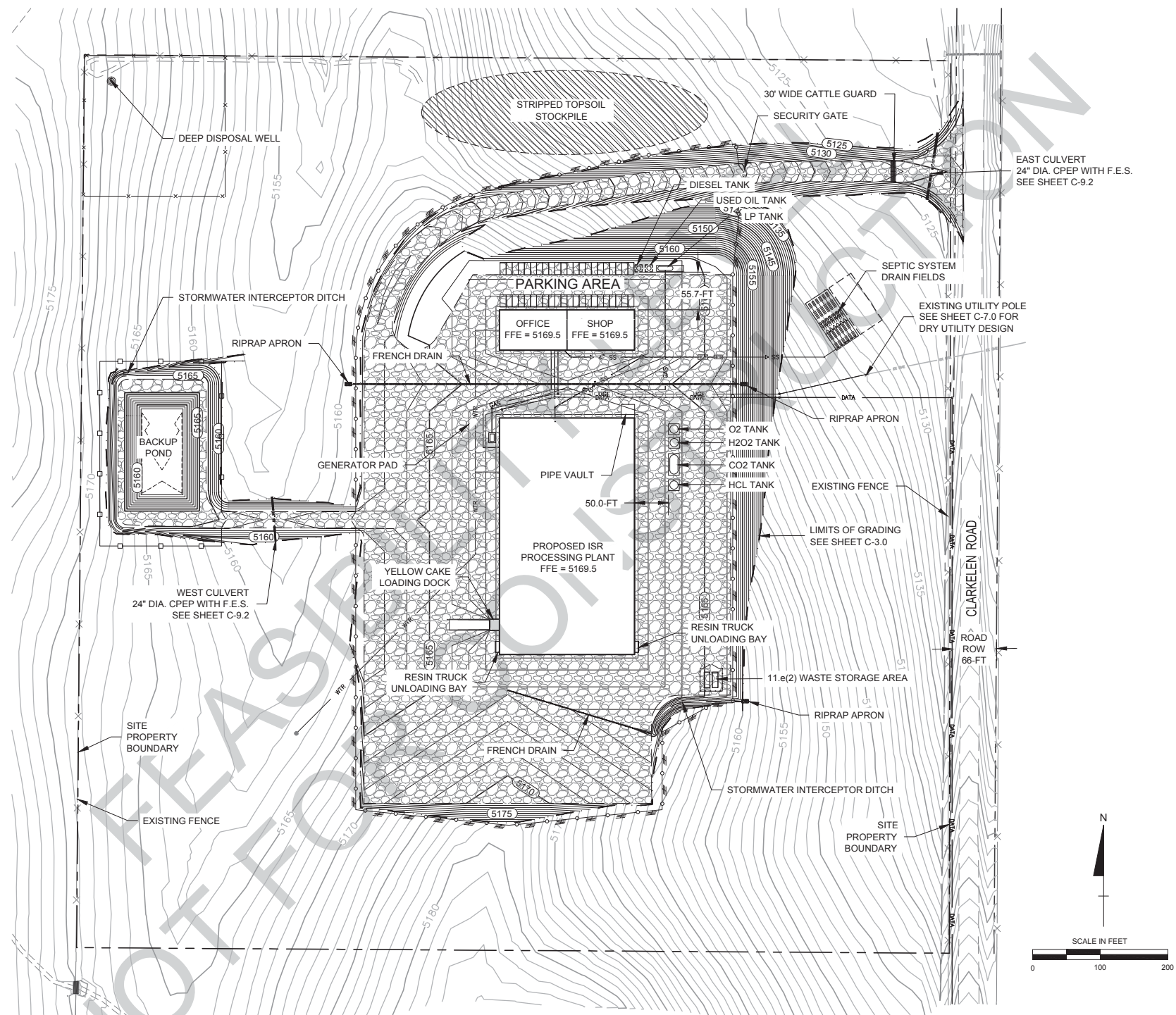
BUTTE OFFICE
521 East Front Street
Butte, MT 59701
Tel: (406) 491-0912



IF THIS BAR DOES
NOT EQUAL ONE
INCH ADJUST
SCALES
ACCORDINGLY

PROJECT NO.:	CADD:	CHECKED BY:	APPROVED BY:	PLOT DATE:
2012-250	TBK	RRU	SLH	10/2/2012 4:51 PM
STORM DRAINAGE: EAST INTERCEPTOR DITCH RENO CREEK PROJECT				
PREPARED FOR AUC LLC CAMPBELL COUNTY, WYOMING				





DRAWING REVISIONS TYPES: 1 PRE-BID 2 POST-BID 3 POST IFC									
NO.	DATE	CADD	CHECK	APP'D	ISSUE / REVISION DESCRIPTION	NO.	DATE	CADD	CHECK

AUC LLC

90% REVIEW SET
NOT FOR
CONSTRUCTION



BOZEMAN OFFICE
1800 West Koch, Suite 6
Bozeman, MT 59715
Tel: (406) 596-8364
Fax: (406) 522-8460

CASPER OFFICE
900 Warner Court, Suite 150
Casper, WY 82601
Tel: (307) 265-0696
Fax: (307) 265-2498

GREAT FALLS OFFICE
600 Central, Suite 204
Great Falls, MT 59401
Tel: (406) 952-0745

BUTTE OFFICE
521 East Front Street
Butte, MT 59701
Tel: (406) 491-0912

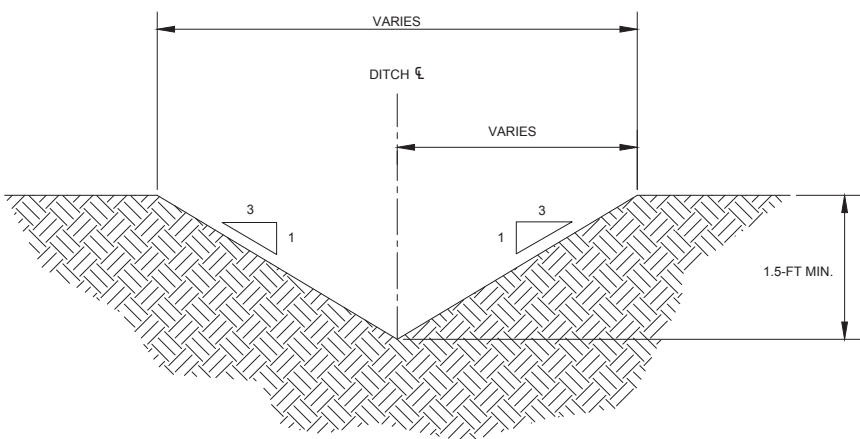
This drawing and all related documents (including electronic media) was prepared by TREC Inc. except as noted otherwise therein and shall remain the property of TREC Inc. The information herein shall only be used by the client to whom the services are rendered and only for the purpose of constructing and/or installing the work as shown at the designated location. Any other use of said documents, including (without limitation) any reproduction or alteration in whole or in part, is strictly prohibited, and the user shall hold harmless and indemnify TREC Inc. from all liabilities which may arise from any unauthorized use. Such use shall cause the waiver of expressed or implied warranties and shall cover any liabilities which may arise from the construction, use or result of any such unauthorized use or changes.

IF THIS BAR DOES
NOT EQUAL ONE
INCH ADJUST
SCALES
ACCORDINGLY

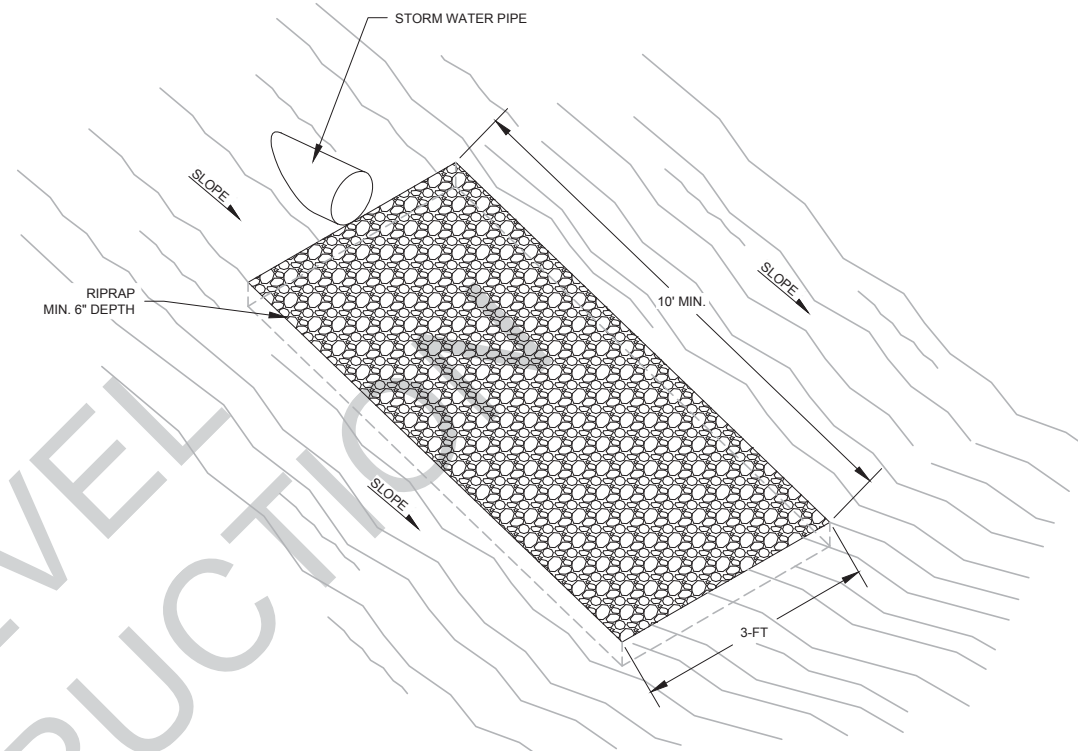
PROJECT NO.:	CADD:	CHECKED BY:	APPROVED BY:	PLOT DATE:
2012-250	TBK	RRU	SLH	10/2/2012 4:49 PM
SITE COMPLETION PLAN RENO CREEK PROJECT PREPARED FOR AUC LLC CAMPBELL COUNTY, WYOMING				

If you need a locate
please call this number
811 or 800-849-2476

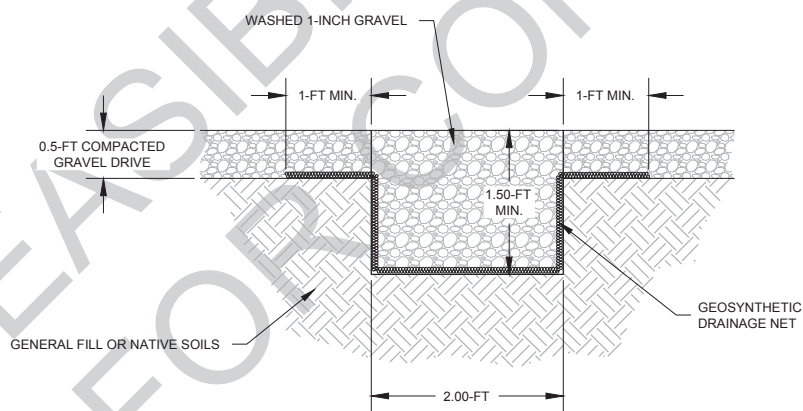
C-10.0



200 DIVERSION V-DITCH
TYPICAL
NTS



225 RIPRAP APRON
TYPICAL
NTS



229 FRENCH DRAIN
TYPICAL DETAIL
NTS



DRAWING REVISIONS TYPES:					1	PRE-BID	1	POST-BID	1	POST IFC	
NO.	DATE	CADD	CHECK	APP'D	ISSUE / REVISION DESCRIPTION	NO.	DATE	CADD	CHECK	APP'D	ISSUE / REVISION DESCRIPTION

AUC LLC

90% REVIEW SET
NOT FOR
CONSTRUCTION

TREC, Inc.
Engineering & Environmental Management
www.treccorp.com

This drawing and all related documents (including electronic media) was prepared by TREC Inc. except as noted otherwise therein and shall remain the property of TREC Inc. The information herein shall only be used by the client to whom the services are rendered and only for the purpose of constructing and/or installing the work as shown at the designated location. Any other use of said documents, including (without limitation) any reproduction or alteration is strictly prohibited, and the user shall hold harmless and indemnify TREC Inc. from all liabilities which may arise from any unauthorized use. Such use shall cause the waiver of expressed or implied warranties and shall cover any liabilities which may arise from the construction, use or result of any such unauthorized use or changes.

BOZEMAN OFFICE
1800 West Koch, Suite 6
Bozeman, MT 59715
Tel: (406) 596-8364
Fax: (406) 522-8460

CASPER OFFICE
900 Warner Court, Suite 150
Casper, WY 82601
Tel: (307) 265-0696
Fax: (307) 265-2498

GREAT FALLS OFFICE
600 Central, Suite 204
Great Falls, MT 59401
Tel: (406) 952-0745

BUTTE OFFICE
521 East Front Street
Butte, MT 59701
Tel: (406) 491-0912

IF THIS BAR DOES
NOT EQUAL ONE
INCH ADJUST
SCALES
ACCORDINGLY

PROJECT NO.: 2012-250	CADD: TBK	CHECKED BY: RRU	APPROVED BY: SLH	PLOT DATE: 10/2/2012 10:20 AM
--------------------------	--------------	--------------------	---------------------	----------------------------------

DRAINAGE DETAILS
RENO CREEK PROJECT
PREPARED FOR
AUC LLC
CAMPBELL COUNTY, WYOMING

SHEET
CD-2.0