

START-UP INTERNAL TECHNICAL REVIEW



TEST GROUP MANAGER REVIEW AND APPROVAL (1)



REVIEW CYCLE (2)



JOINT TEST GROUP APPROVAL

1. FINAL STEP FOR SELECTED PRELIMINARY TESTS.

**2. JTG MEMBERS, QUALITY ASSURANCE AND OTHERS AS
DESIGNATED BY THE TEST GROUP MANAGER.**

FIGURE 14.2-1

**REVIEW CYCLE FOR SELECTED
PRELIMINARY AND ALL
PREOPERATIONAL TEST PROCEDURES**

**NIAGARA MOHAWK POWER CORPORATION
NINE MILE POINT-UNIT 2
FINAL SAFETY ANALYSIS REPORT**

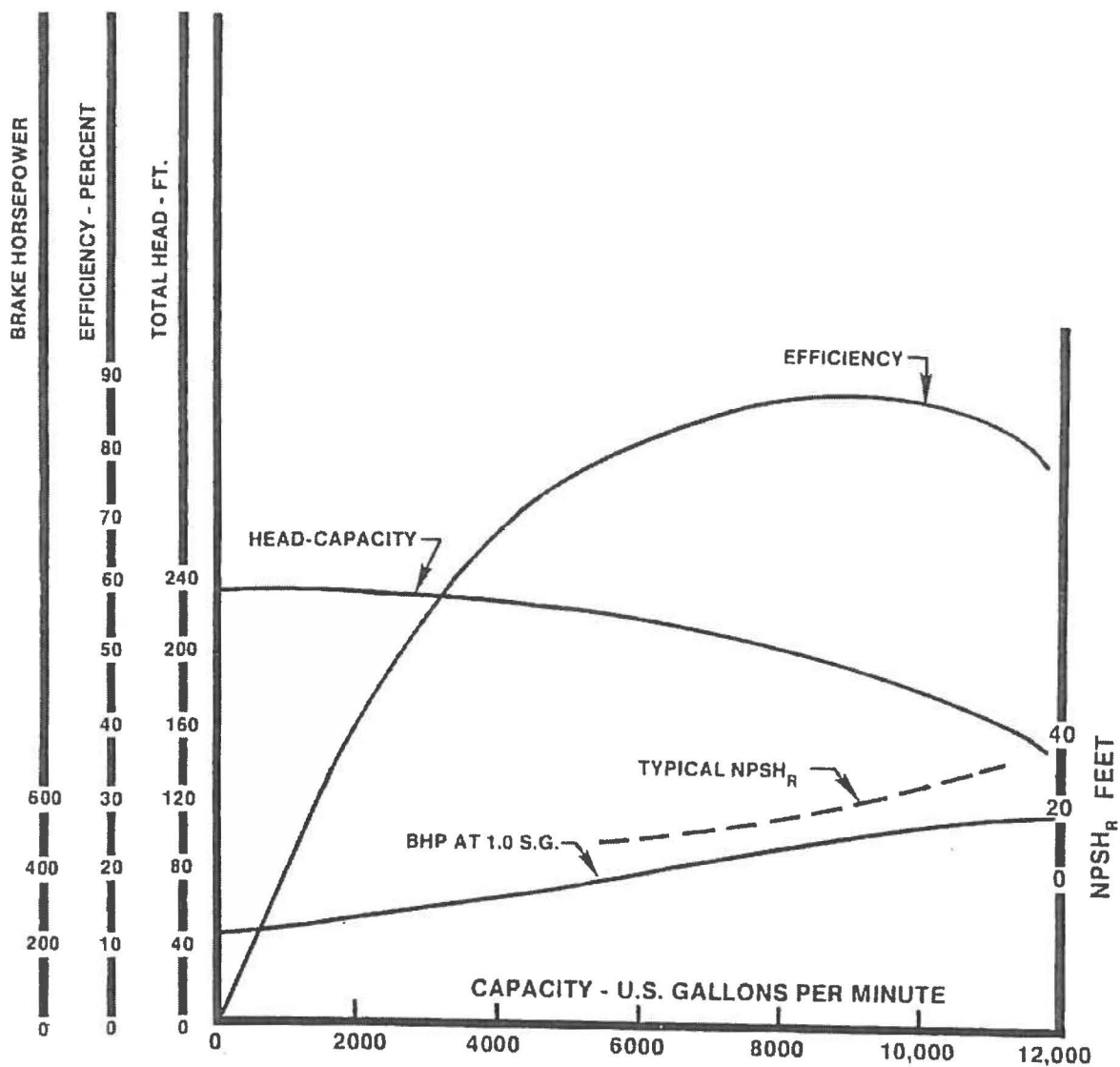


FIGURE 14.2-1b-1

SERVICE WATER PUMP
CHARACTERISTIC CURVE

NIAGARA MOHAWK POWER CORPORATION
NINE MILE POINT-UNIT 2
UPDATED SAFETY ANALYSIS REPORT

TECHNICAL REVIEW (LEAD STD&A AND POWER ASCENSION MANAGER)



STAFF REVIEW (IN ACCORDANCE WITH AP'S)



SORC REVIEW AND ACCEPTANCE



SRAB REVIEW*

APPROVAL BY GENERAL SUPERINTENDENT

***ONLY AS REQUIRED BY THE GENERAL SUPERINTENDENT**

FIGURE 14.2-2

**REVIEW CYCLE FOR INITIAL
STARTUP TEST PROCEDURES**

**NIAGARA MOHAWK POWER CORPORATION
NINE MILE POINT-UNIT 2
FINAL SAFETY ANALYSIS REPORT**

TEST ENGINEER REVIEW



TEST GROUP MANAGER/LEAD ENGINEER (1)



JOINT TEST GROUP REVIEW AND APPROVAL



SORC REVIEW AND ACCEPTANCE OF SYSTEM



ACCEPTANCE BY THE STATION SUPERINTENDENT

**1. FINAL STEP FOR PRELIMINARY TEST RESULTS EXCEPT AS
NOTED IN 14.2.5.1**

FIGURE 14.2-3

**PRELIMINARY AND PREOPERATIONAL
TEST RESULTS REVIEW**

**NIAGARA MOHAWK POWER CORPORATION
NINE MILE POINT-UNIT 2
FINAL SAFETY ANALYSIS REPORT**

**TECHNICAL REVIEW
AND ACCEPTANCE**

**(GE LEAD STD&A, S.O.M., TECHNICAL SUPT.,
AND POWER ASCENSION MANAGER)**



**STATION SUPERINTENDENT
REVIEW AND ACCEPTANCE**



**QUALITY ASSURANCE
REVIEW AND ACCEPTANCE**



**SORC
REVIEW AND ACCEPTANCE**



-----> SRAB*

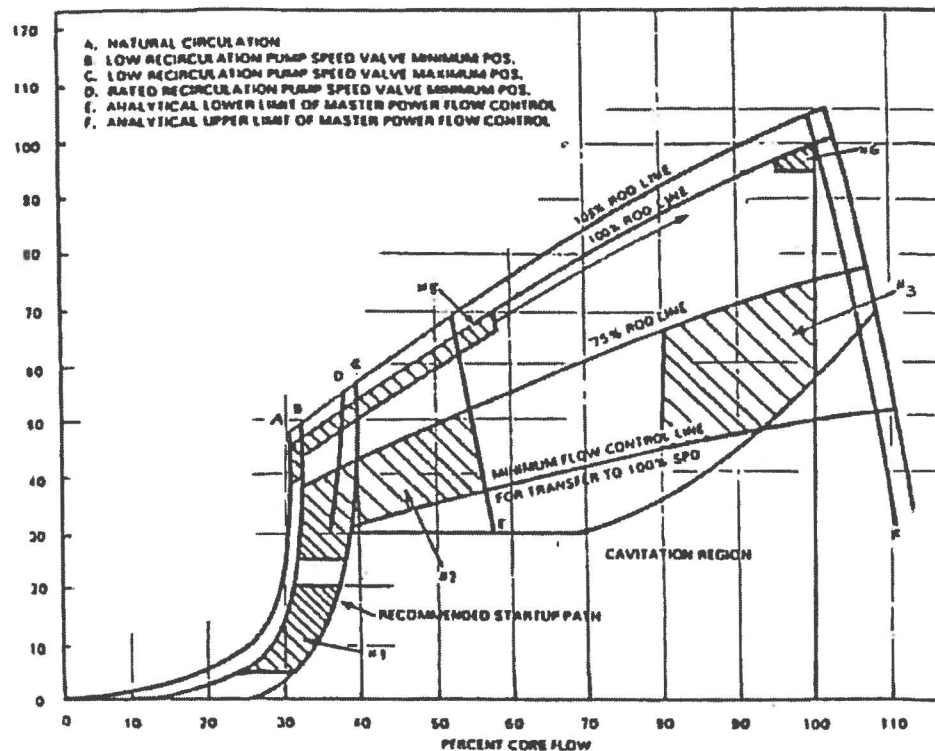
**GENERAL SUPERINTENDENT
REVIEW AND APPROVAL**

***ONLY AS REQUIRED BY THE GENERAL SUPERINTENDENT**

FIGURE 14.2-4

**INITIAL STARTUP TEST
RESULTS REVIEW**

**NIAGARA MOHAWK POWER CORPORATION
NINE MILE POINT-UNIT 2
FINAL SAFETY ANALYSIS REPORT**



CONDITION (TC)

- 1 RECIRC PUMPS OPERATING ON LOW FREQUENCY POWER SUPPLY
- 2 BETWEEN 50% AND 75% CONTROL ROD LINES, AT OR BELOW THE ANALYTICAL LOWER LIMIT OF MASTER FLOW CONTROL MODE
- 3 FROM 50% TO 75% CONTROL ROD LINES AND CORE FLOW BETWEEN 80% AND MAXIMUM ALLOWABLE
- 5 WITHIN 8 TO -5% OF THE RATED ROD LINE BETWEEN NATURAL CIRCULATION AND 5% ABOVE THE ANALYTICAL LOWER LIMIT OF MASTER POWER FLOW CONTROL. ALSO FROM THE 100% ROD LINE TO THE 88% ROD LINE AT NATURAL CIRCULATION.
- 6 WITHIN 0 TO -5% OF RATED THERMAL POWER, AND WITHIN 5% OF RATED CORE FLOW RATE

FIGURE 14.2-5

TEST CONDITION REGION DEFINITION

NIAGARA MOHAWK POWER CORPORATION
NINE MILE POINT-UNIT 2
UPDATED SAFETY ANALYSIS REPORT

**THIS FIGURE
HAS BEEN DELETED**

FIGURE 14.2-6

NIAGARA MOHAWK POWER CORPORATION
NINE MILE POINT-UNIT 2
FINAL SAFETY ANALYSIS REPORT

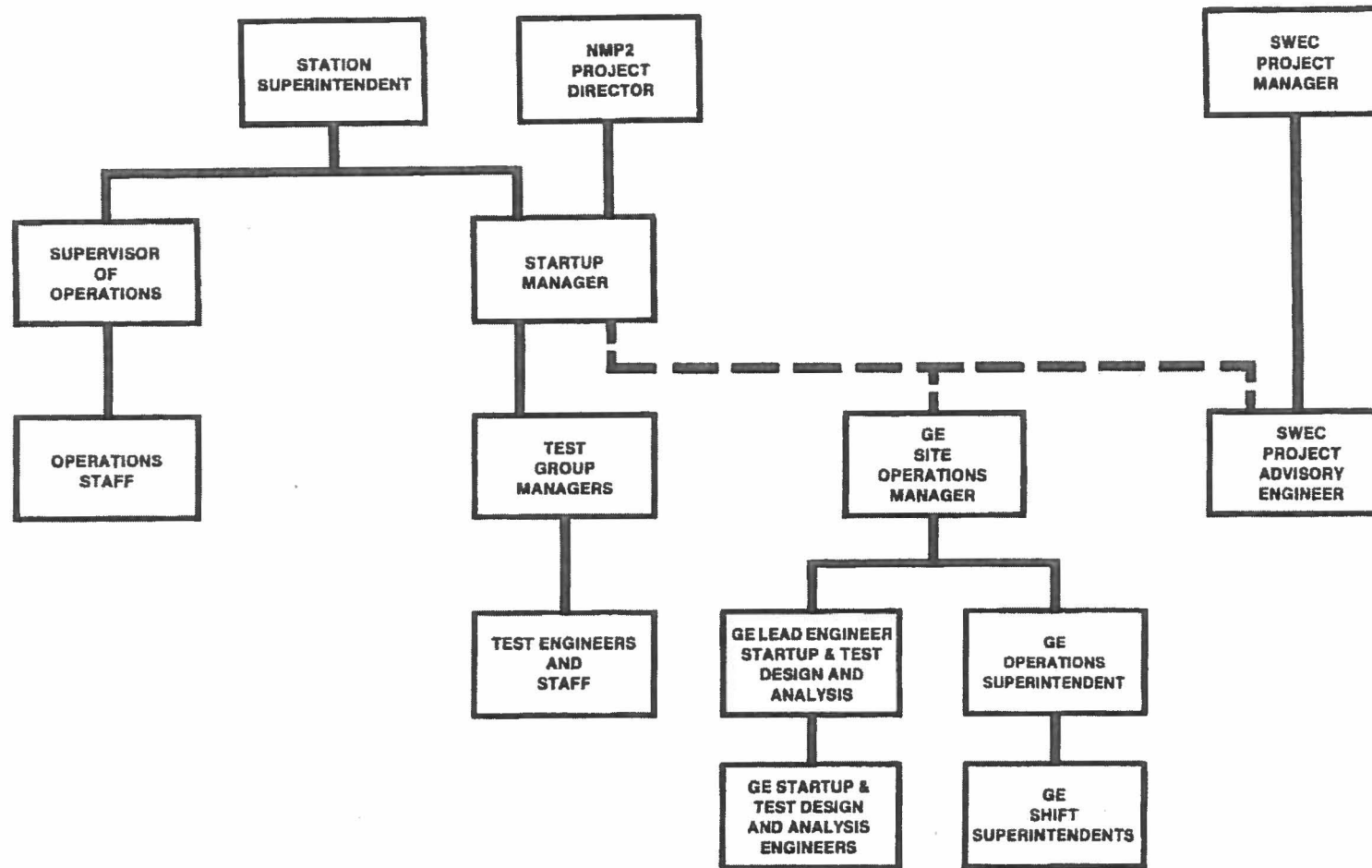


FIGURE 14.2-7

UNIT 2 STARTUP ORGANIZATION

NIAGARA MOHAWK POWER CORPORATION
NINE MILE POINT-UNIT 2
FINAL SAFETY ANALYSIS REPORT

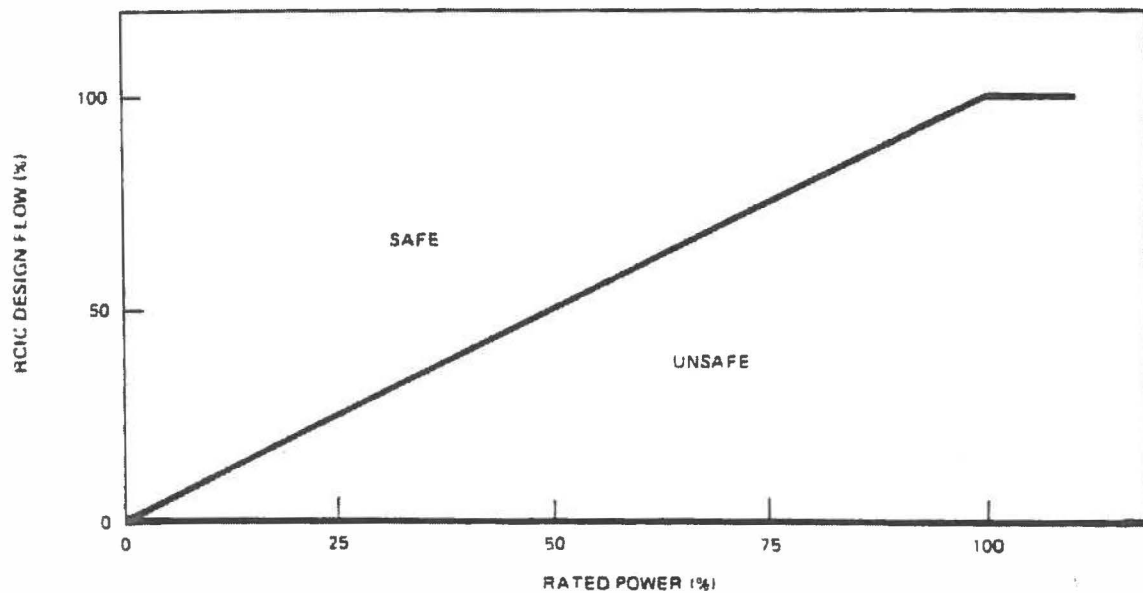
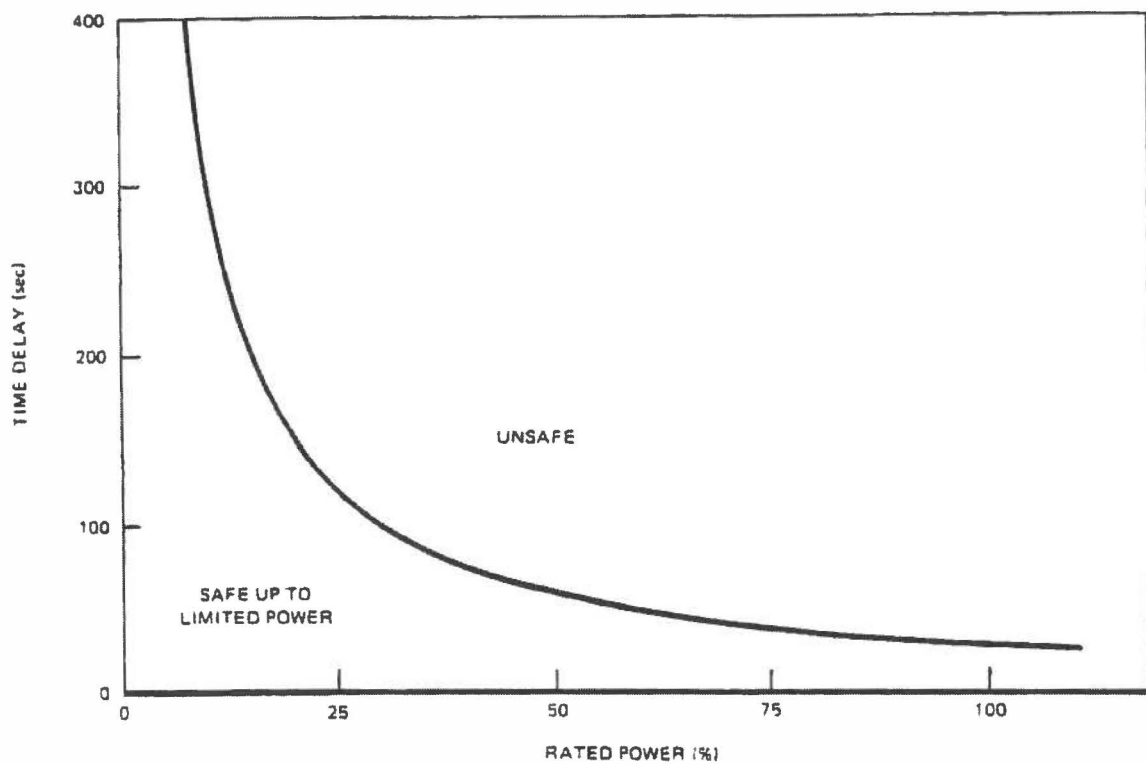


FIGURE 14.2-213-1

RCIC ACCEPTANCE CRITERIA CURVES FOR
CAPACITY AND ACTUATION TIME

NIAGARA MOHAWK POWER CORPORATION
NINE MILE POINT-UNIT 2
FINAL SAFETY ANALYSIS REPORT

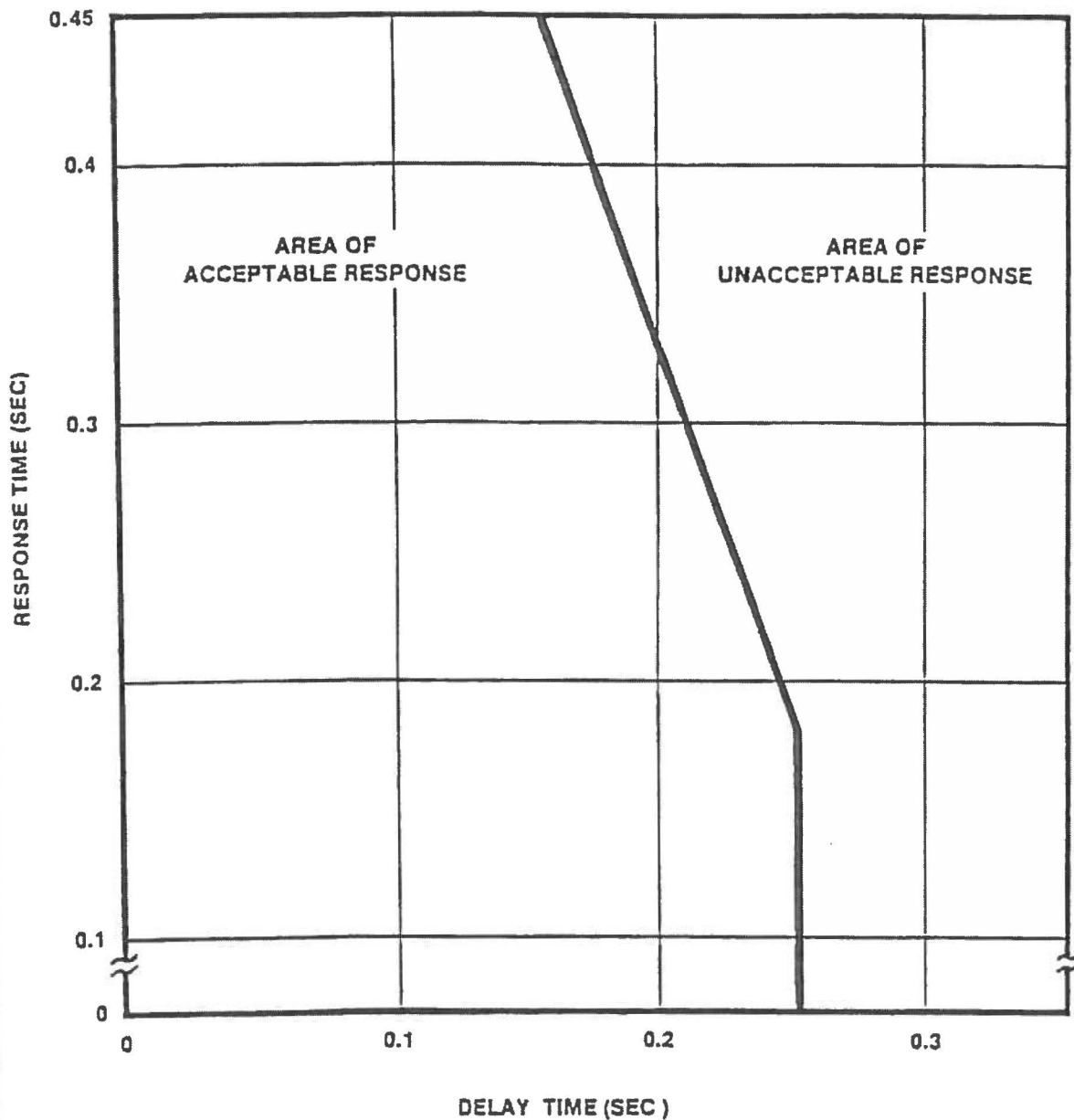


FIGURE 14.2-233-1

TRADEOFF CURVE FOR STEP
SIZES 0.2% TO 0.5%

NIAGARA MOHAWK POWER CORPORATION
NINE MILE POINT- UNIT 2
UPDATED SAFETY ANALYSIS REPORT

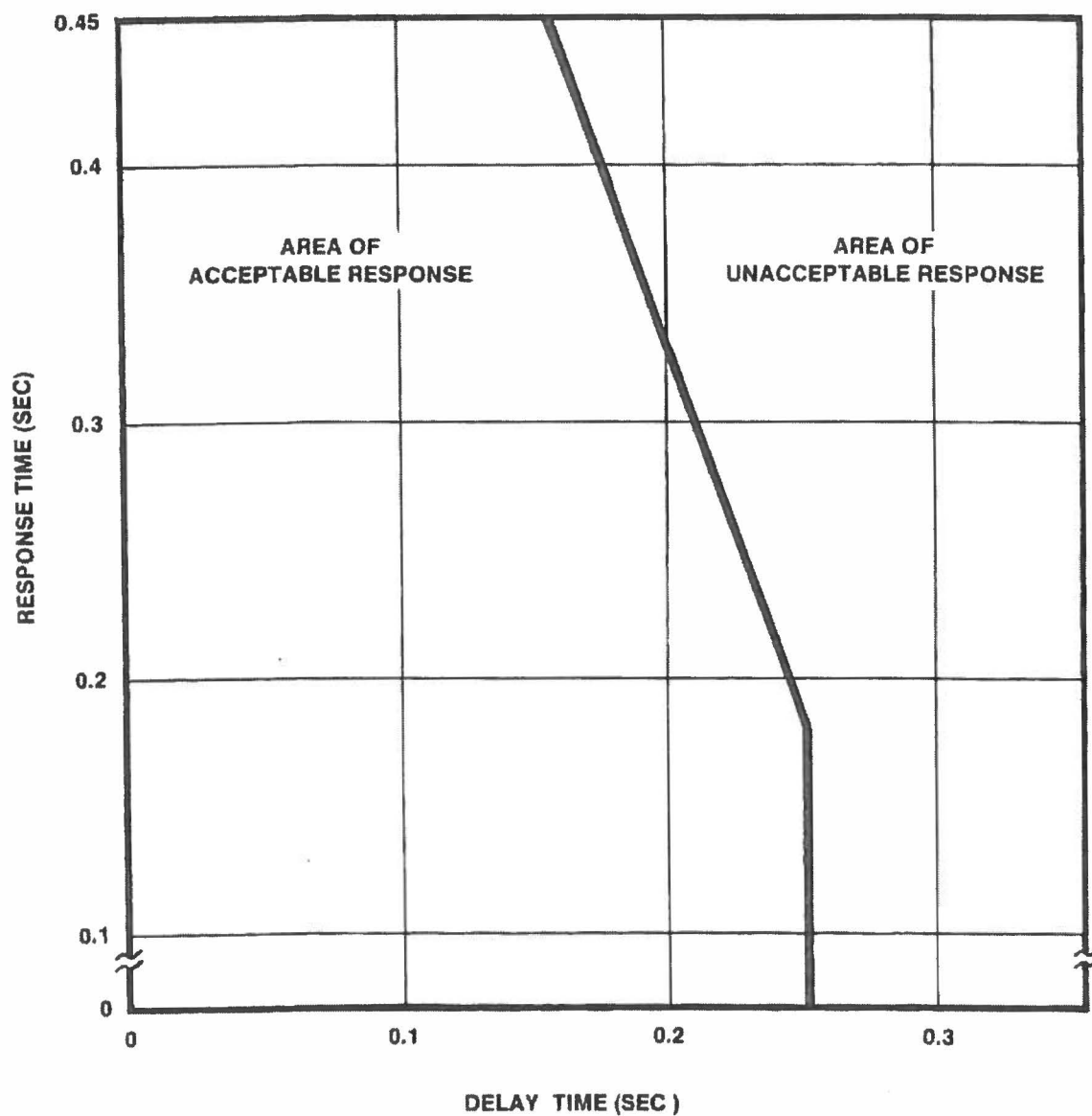


FIGURE 14.2-234-1

TRADEOFF CURVE FOR STEP
SIZES 0.2% TO 0.3%

NIAGARA MOHAWK POWER CORPORATION
NINE MILE POINT-UNIT 2
FINAL SAFETY ANALYSIS REPORT

**TO BE PROVIDED IN
GE TEST INSTRUCTIONS**

FIGURE 14.2-239-1

**TWO-PUMP TRIP
COASTDOWN CURVES**

**NIAGARA MOHAWK POWER CORPORATION
NINE MILE POINT-UNIT 2
FINAL SAFETY ANALYSIS REPORT**