

FIGURE 11.1-1

NOBLE RADIOGAS DECAY
CONSTANT EXPONENT
FREQUENCY HISTOGRAM

NIAGARA MOHAWK POWER CORPORATION
NINE MILE POINT-UNIT 2
FINAL SAFETY ANALYSIS REPORT

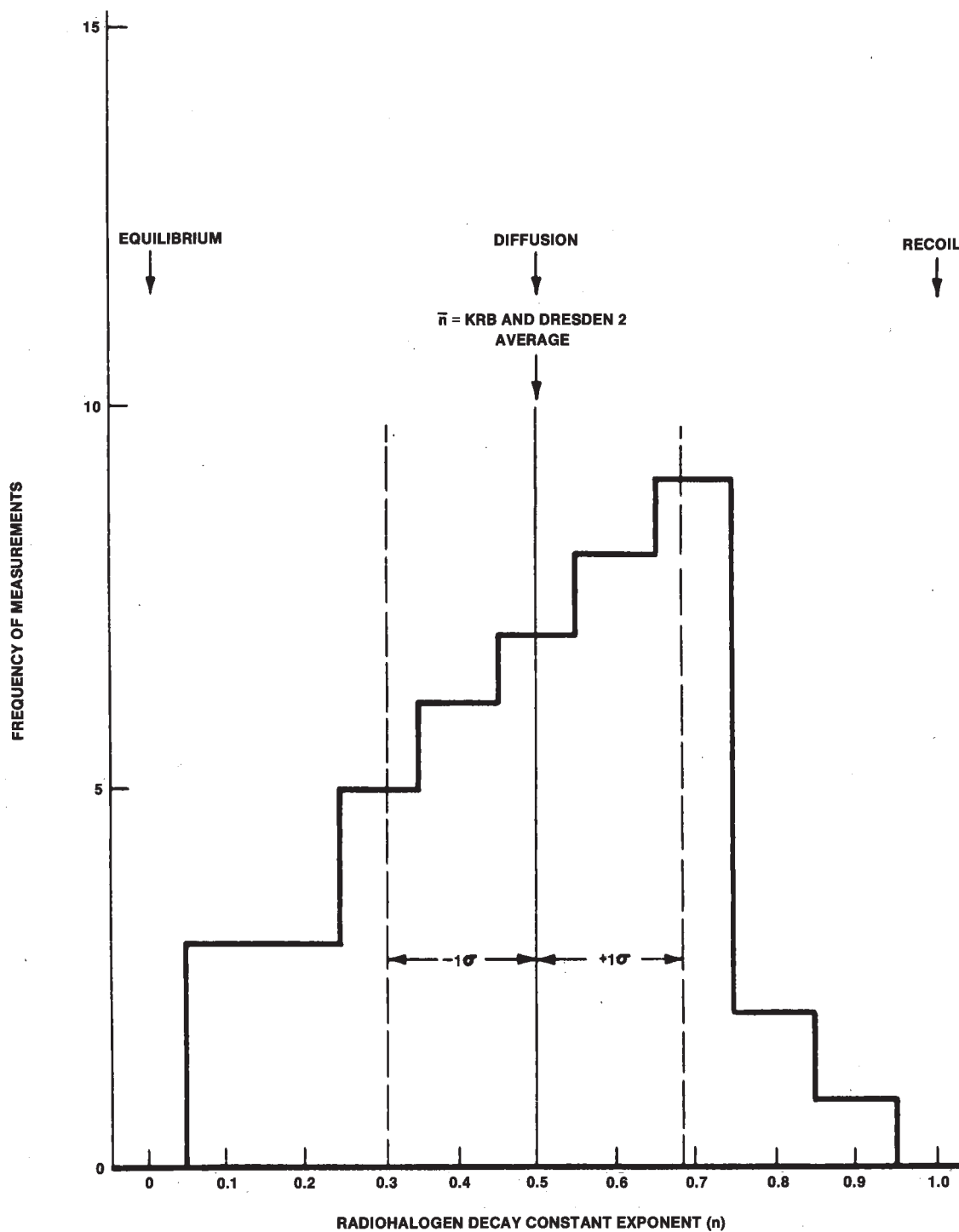


FIGURE 11.1-2

RADIOHALOGEN DECAY
CONSTANT EXPONENT
FREQUENCY HISTOGRAM

NIAGARA MOHAWK POWER CORPORATION
NINE MILE POINT-UNIT 2
FINAL SAFETY ANALYSIS REPORT

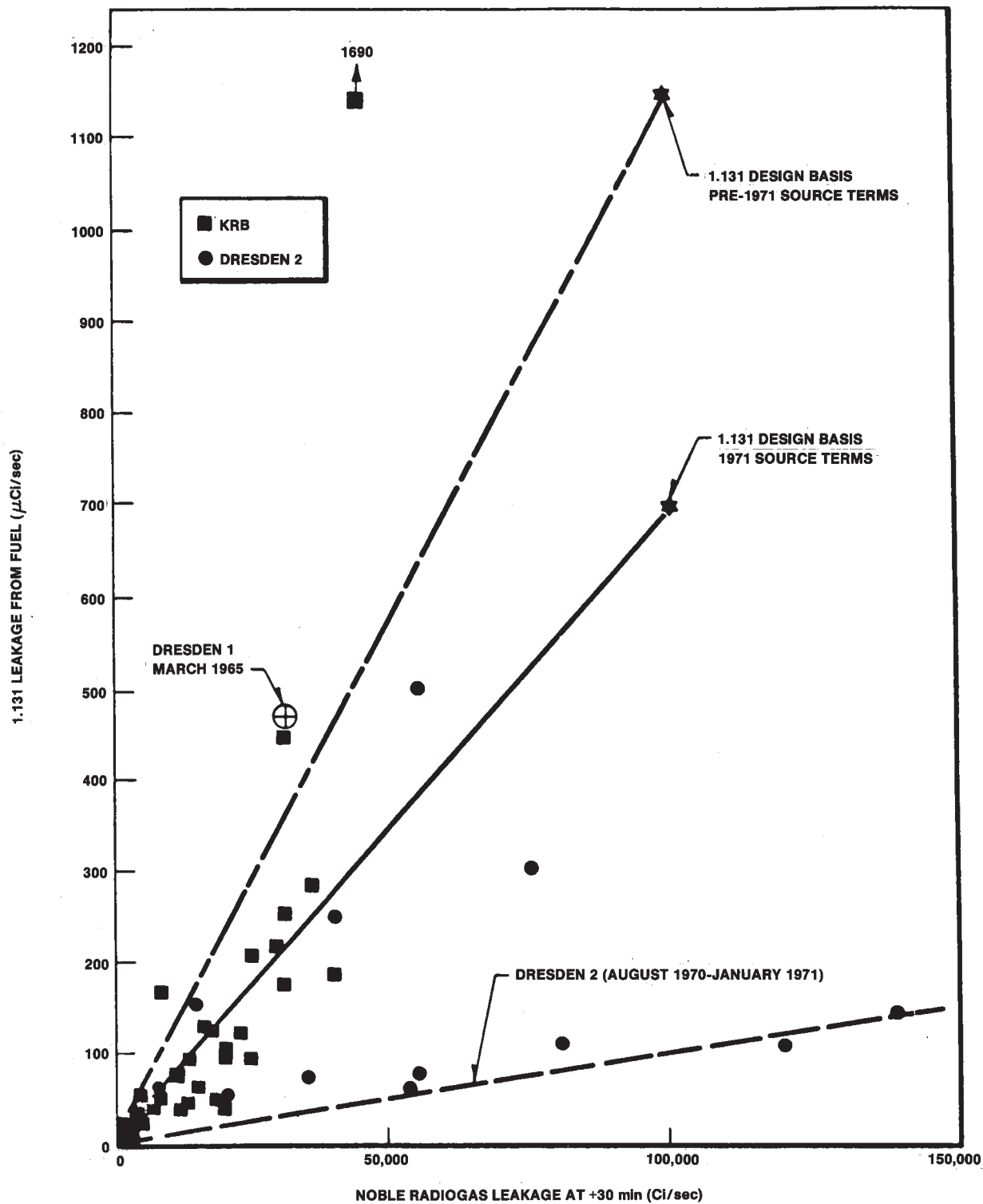
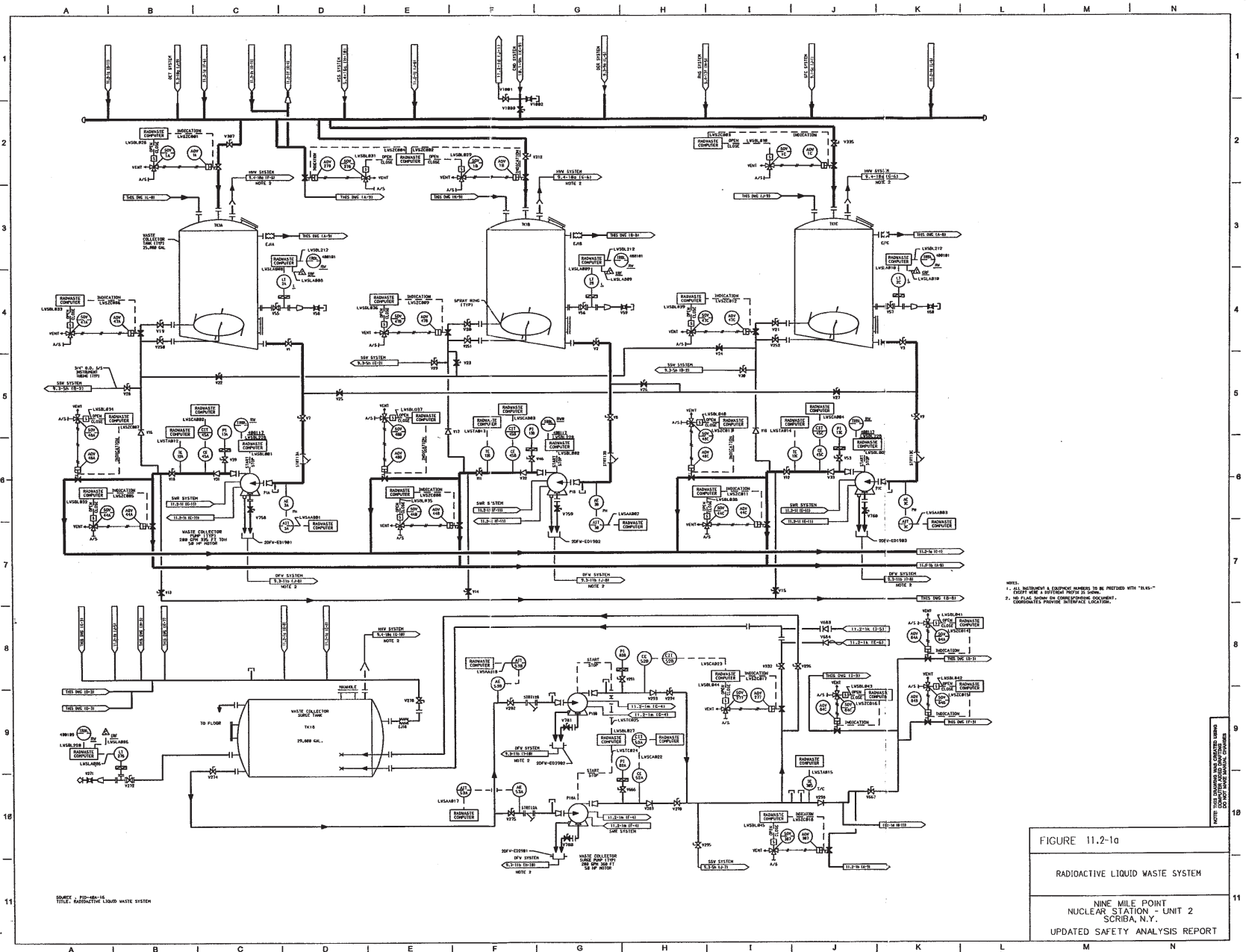
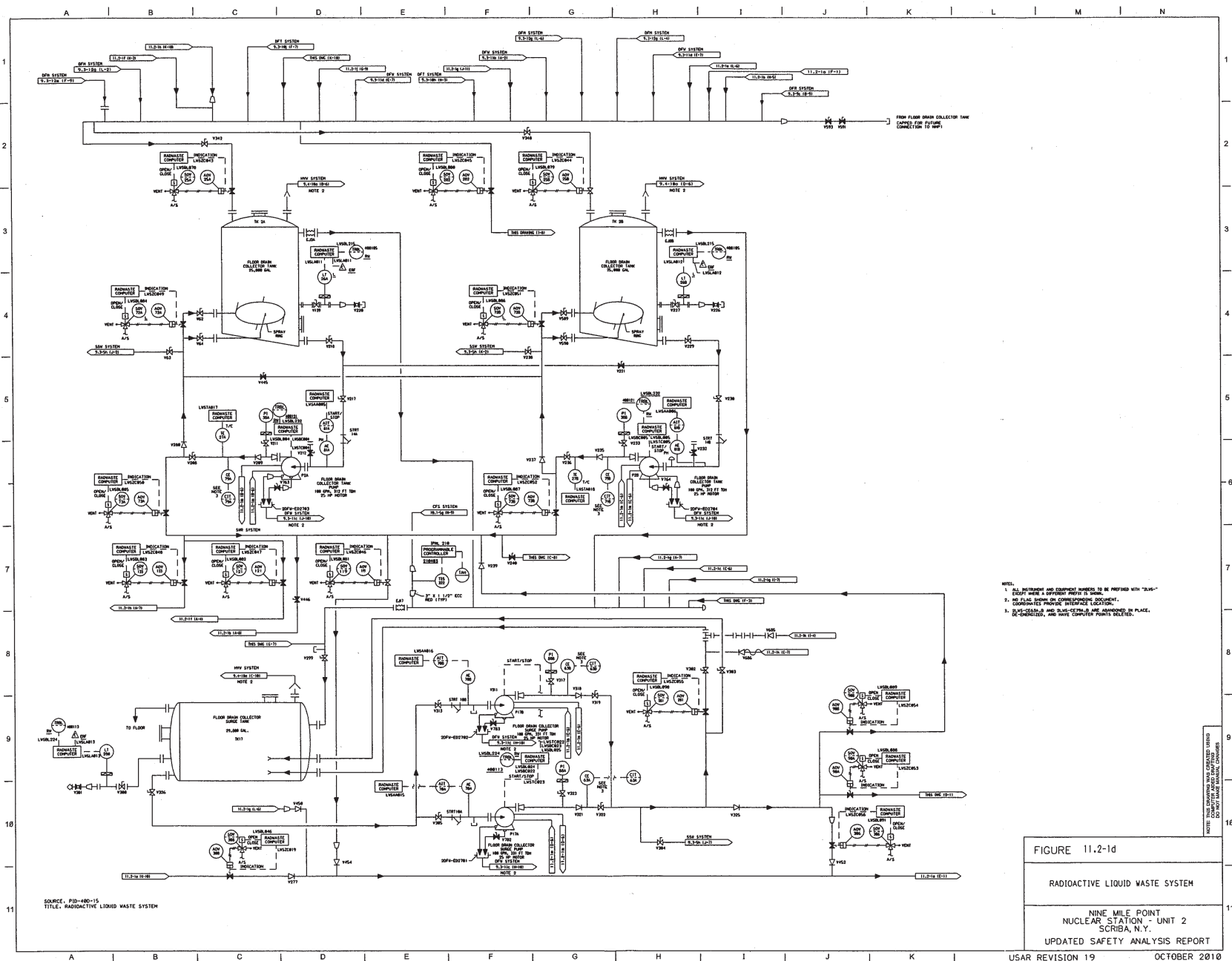


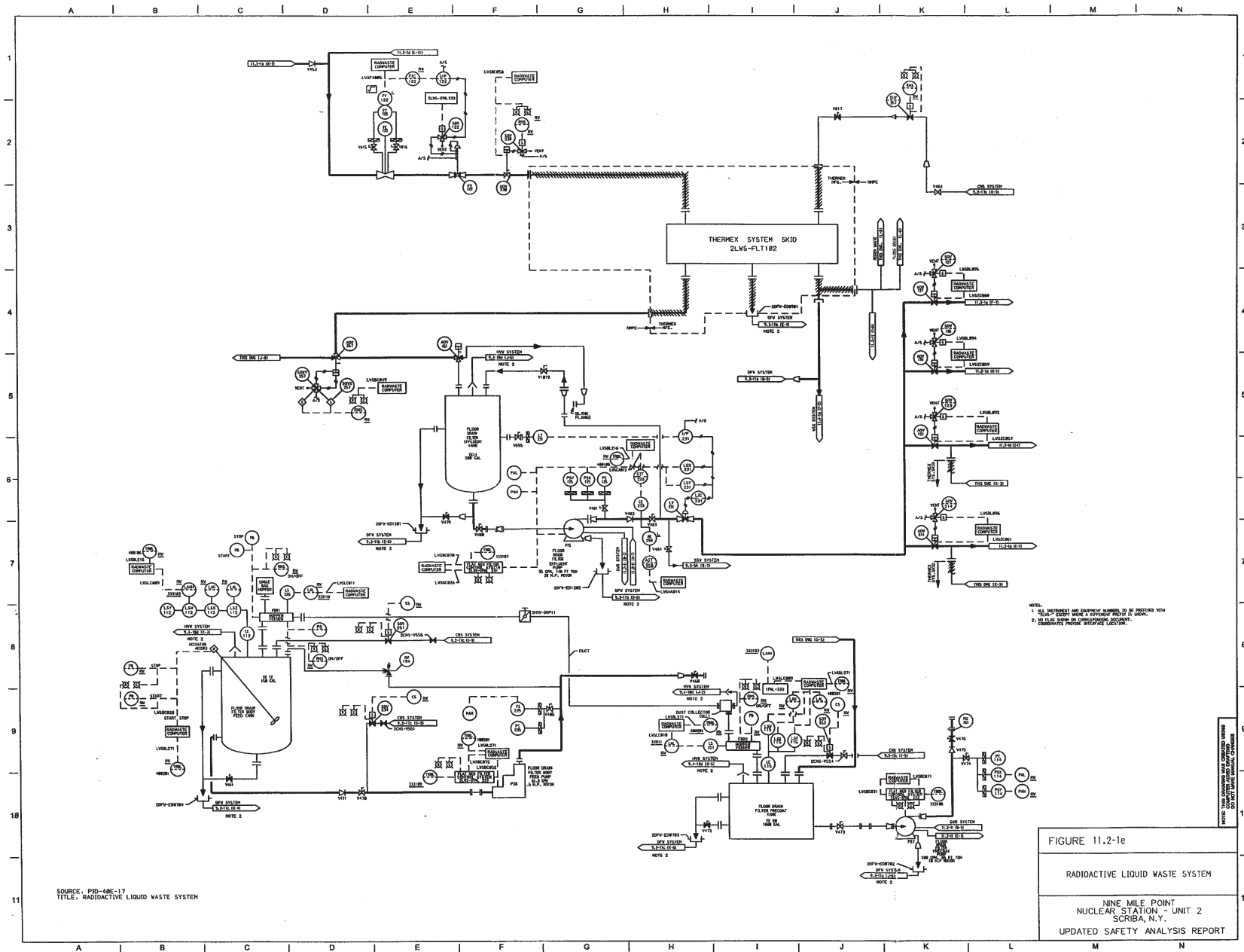
FIGURE 11.1-3

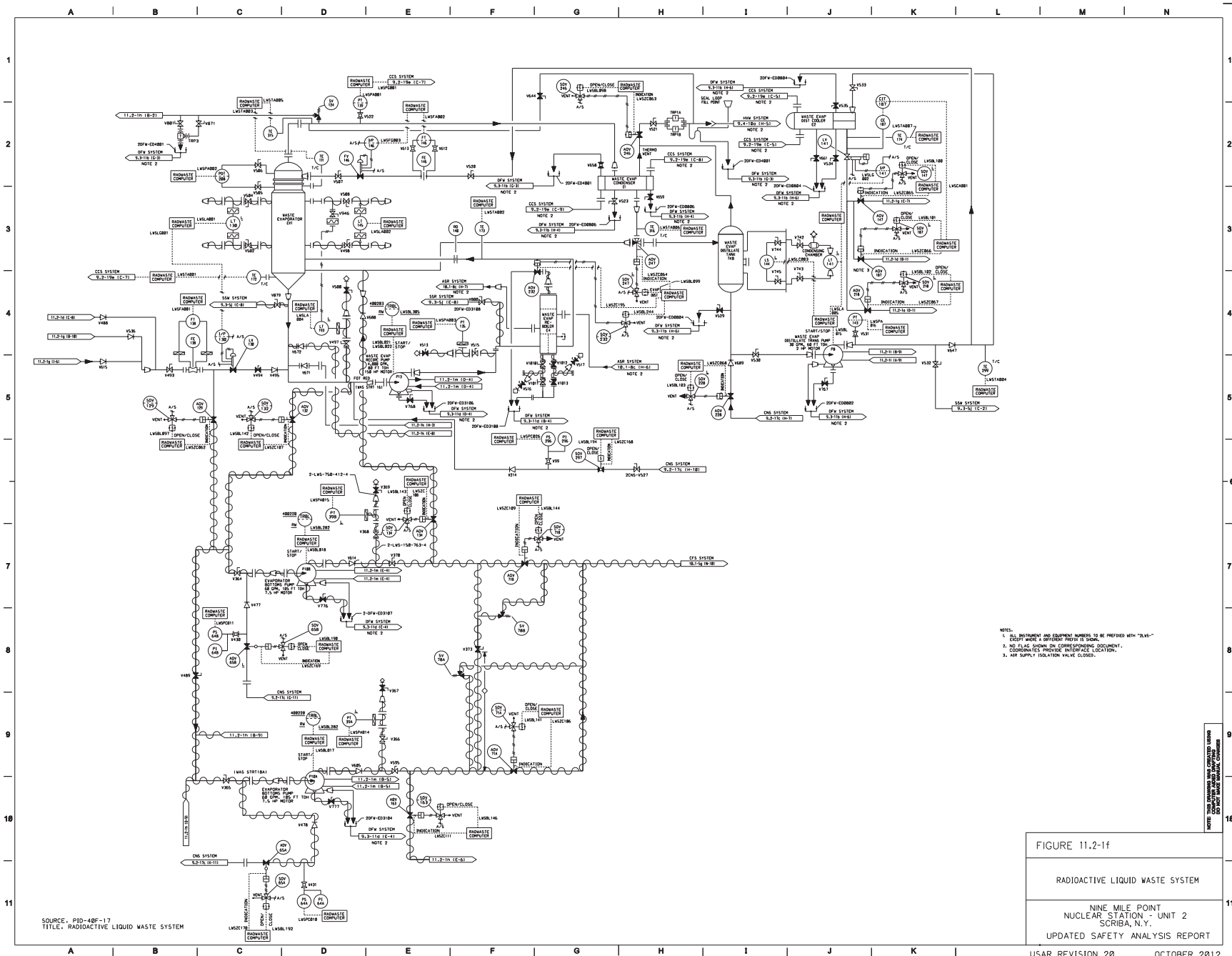
NOBLE RADIOGAS LEAKAGE
VERSUS 1-131 LEAKAGE

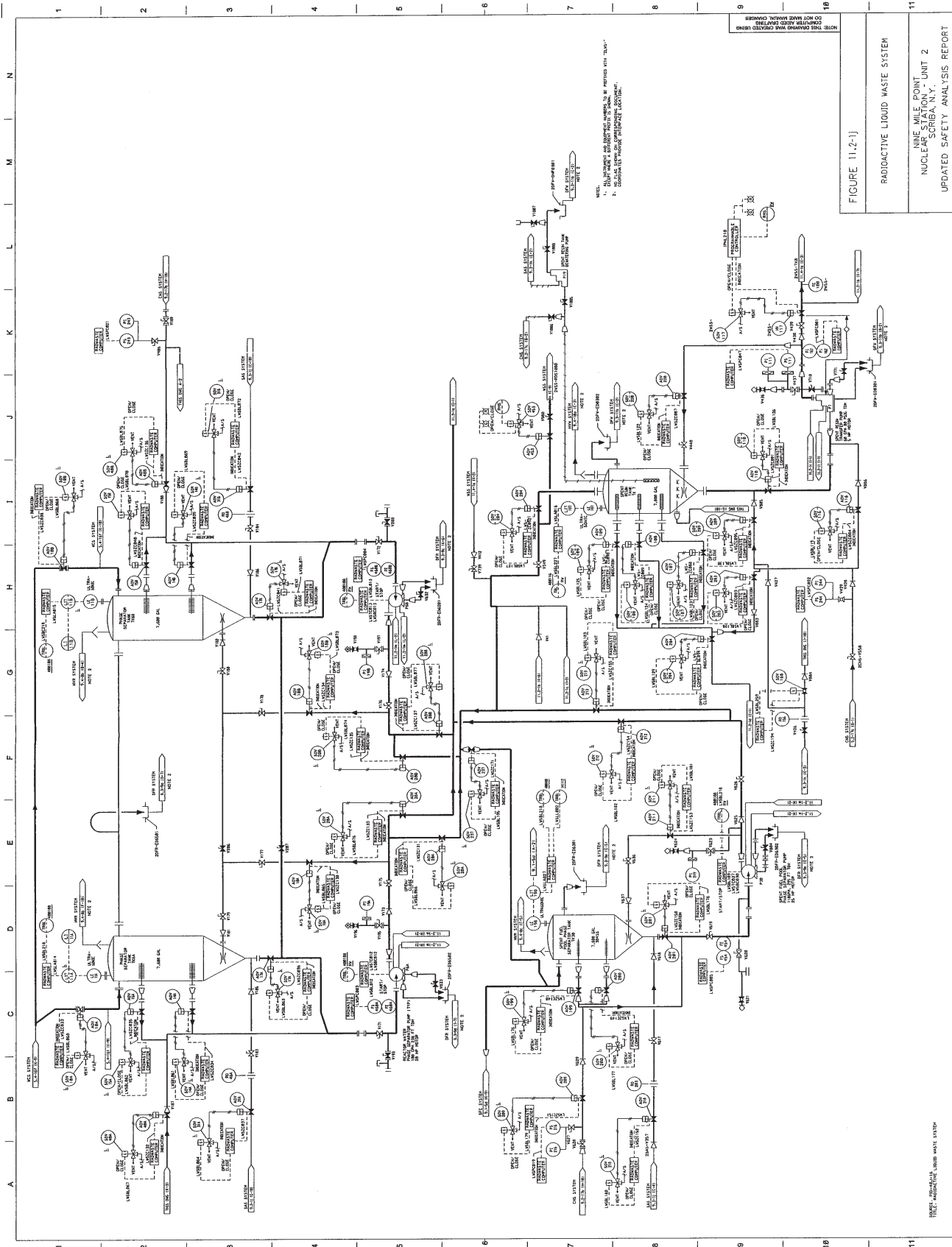
NIAGARA MOHAWK POWER CORPORATION
NINE MILE POINT-UNIT 2
FINAL SAFETY ANALYSIS REPORT

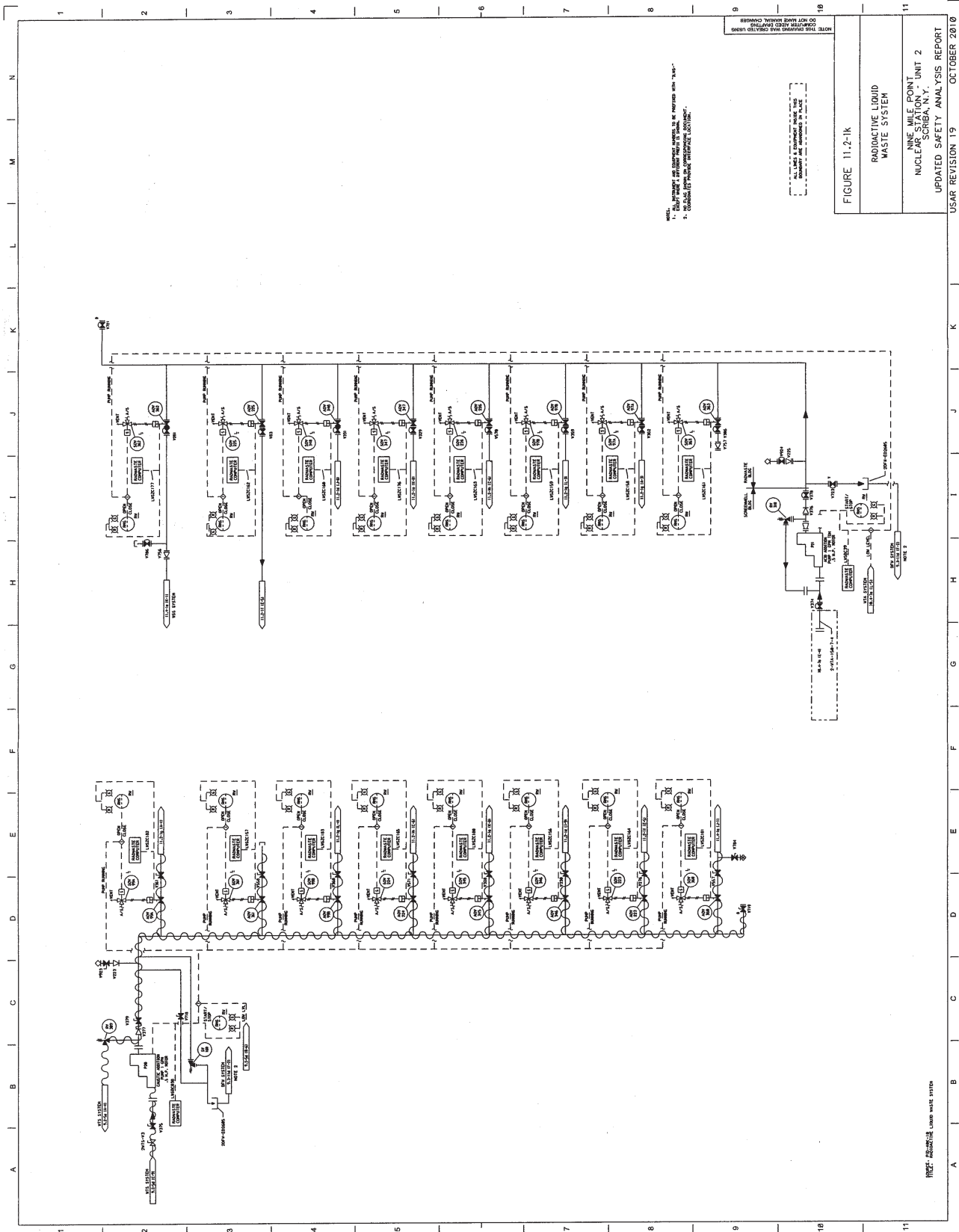


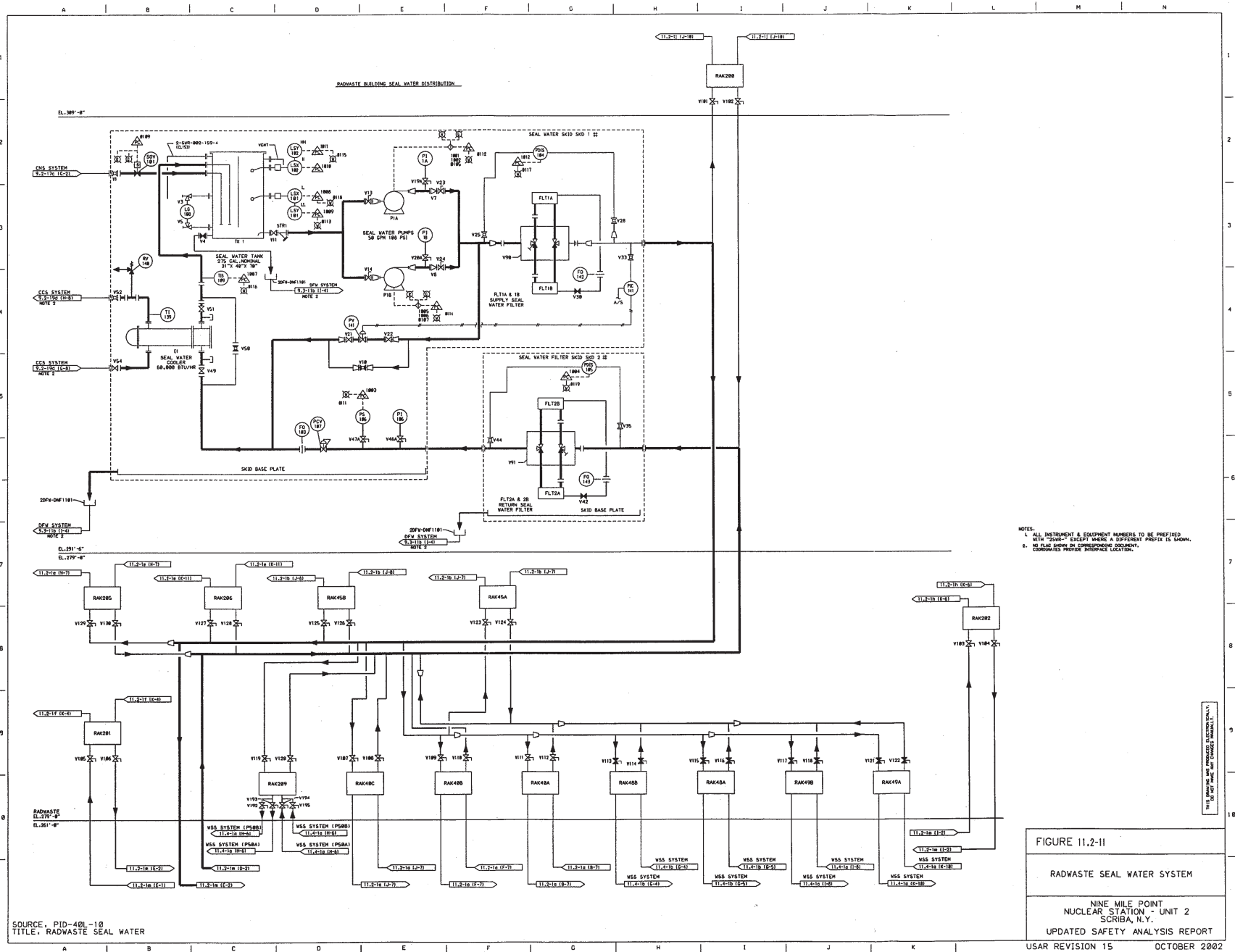


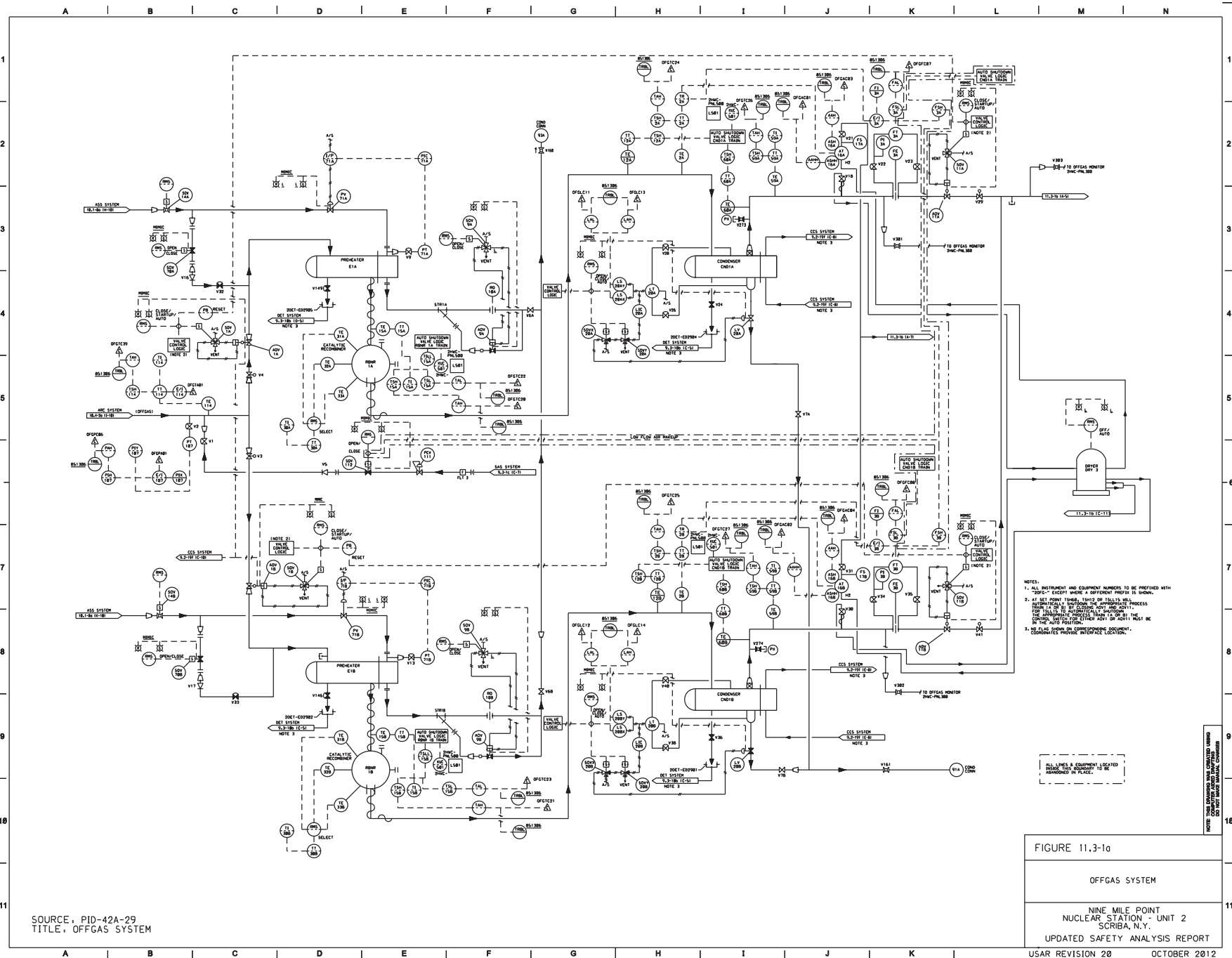












SOURCE: PID-42A-29
TITLE: OFFGAS SYSTEM

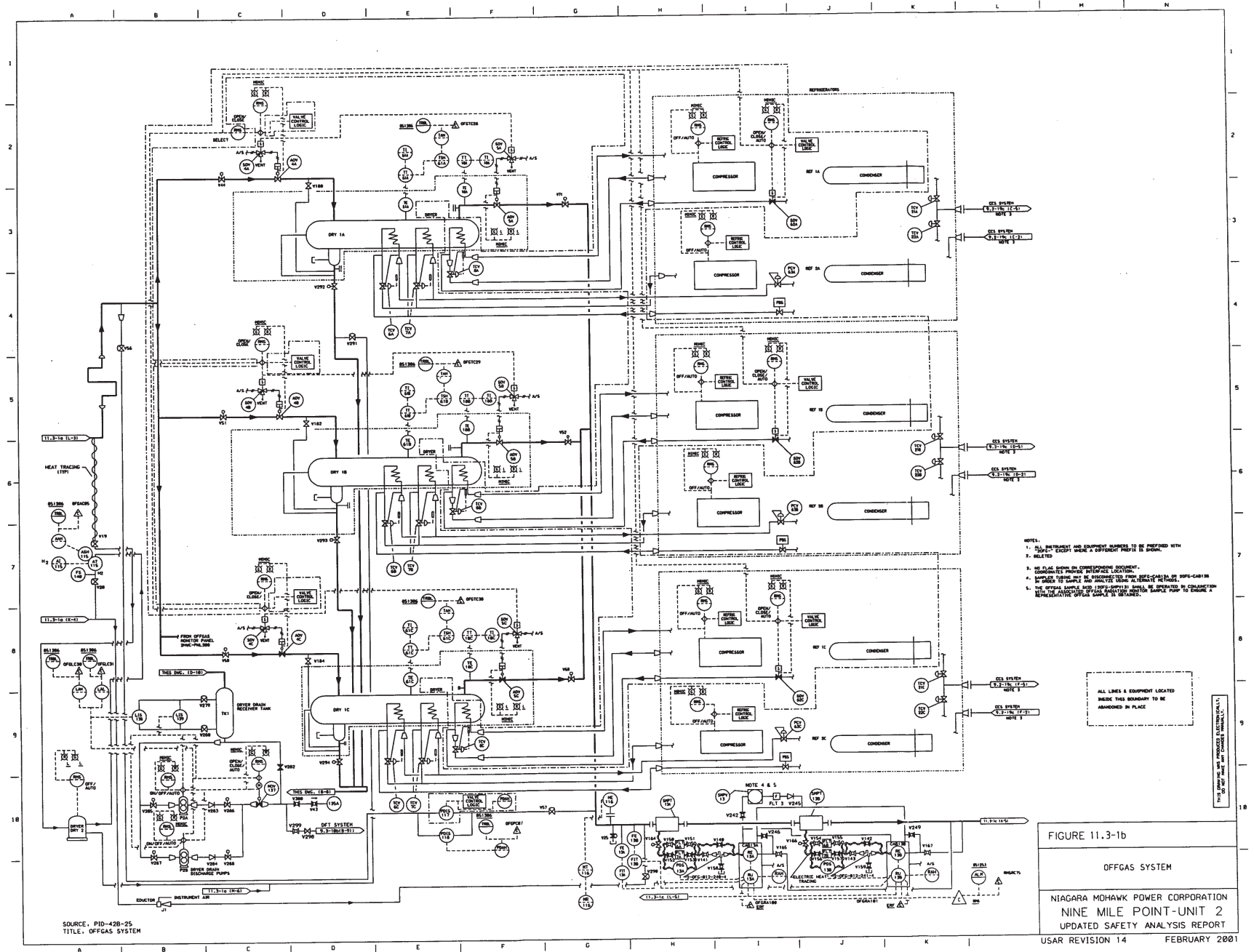
FIGURE 11.3-1a

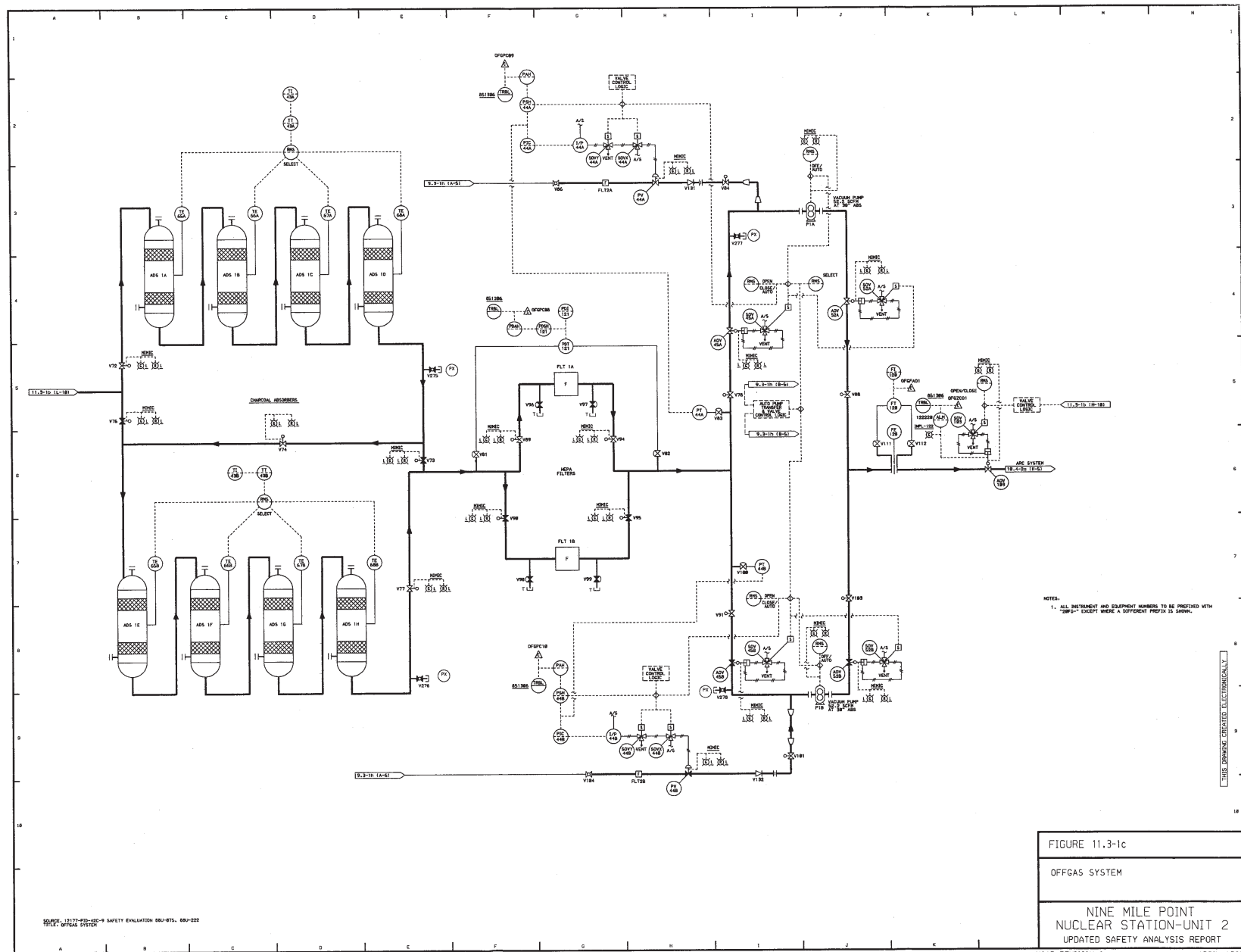
OFFGAS SYSTEM

NINE MILE POINT
NUCLEAR STATION - UNIT 2
SCRIBA, N.Y.

UPDATED SAFETY ANALYSIS REPORT

USAR REVISION 20 OCTOBER 2012





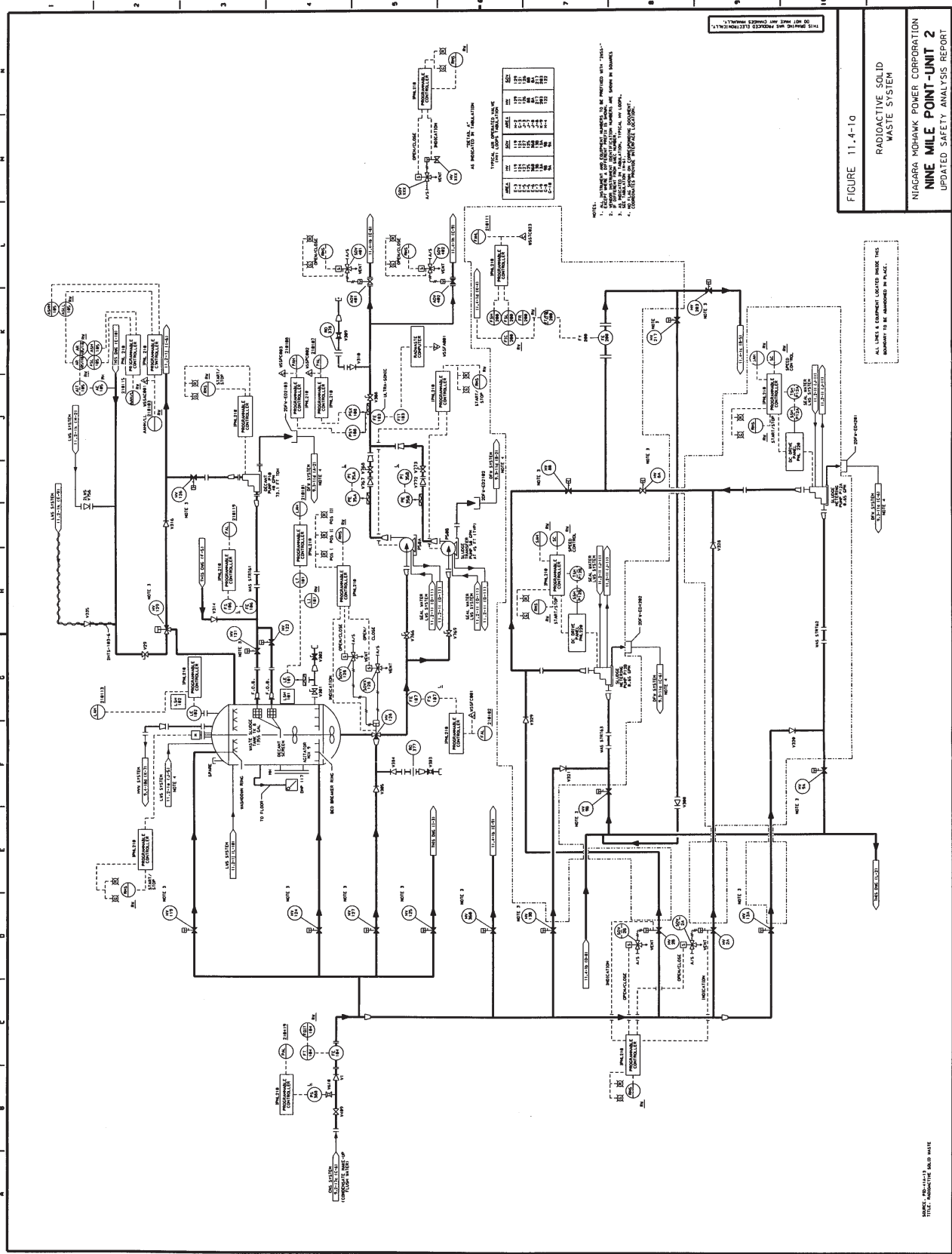
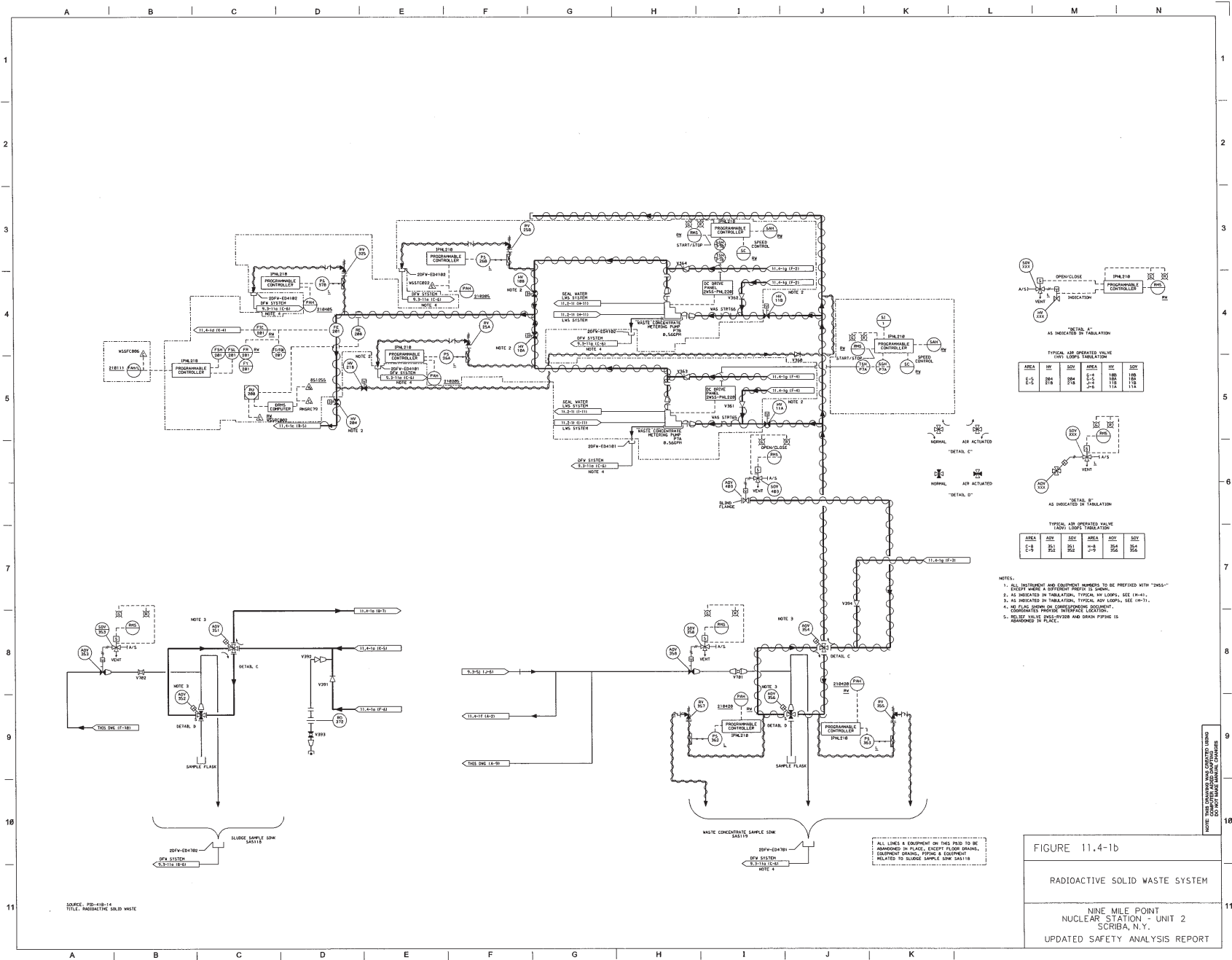
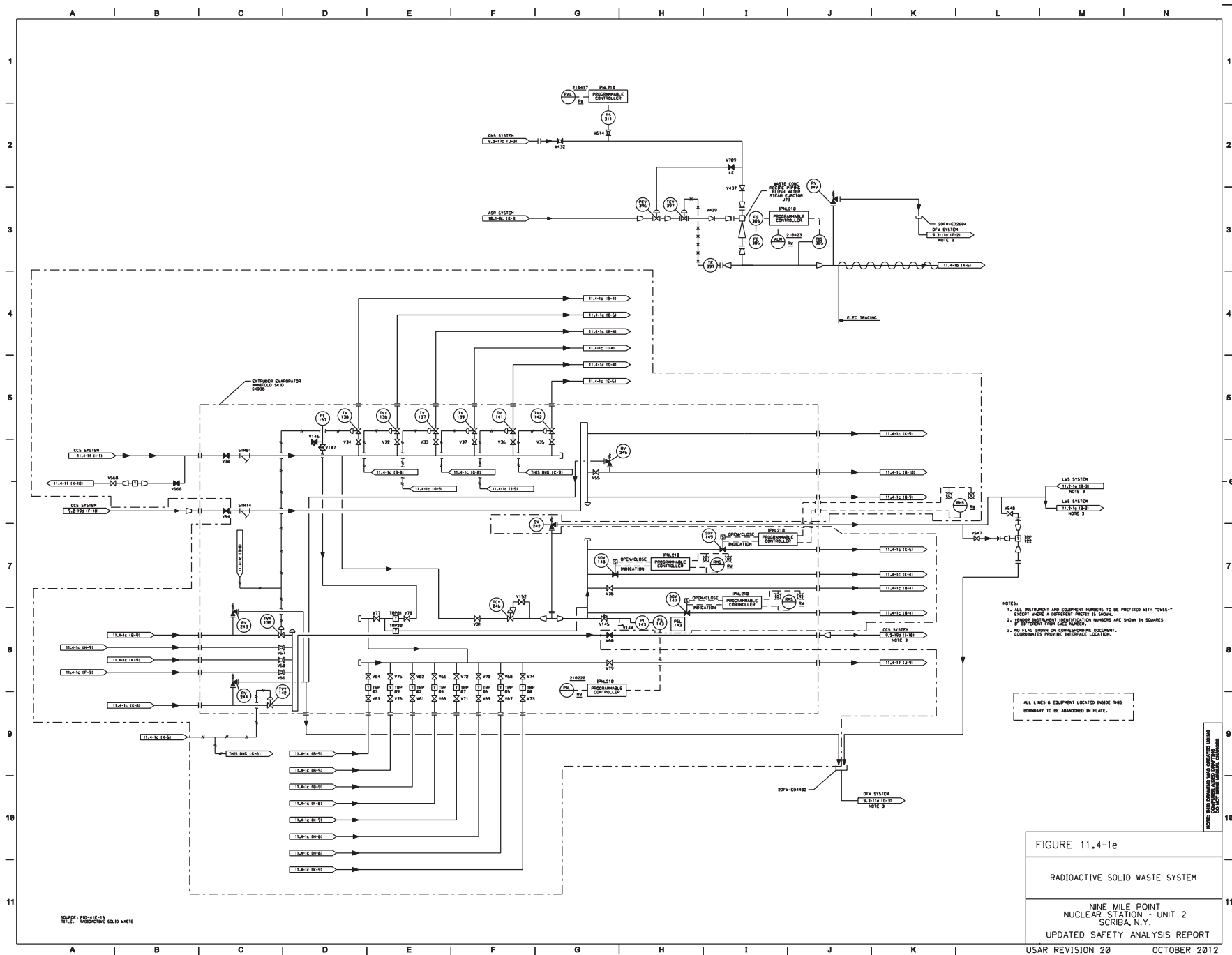


FIGURE 11.4-10
RADIOACTIVE SOLID WASTE SYSTEM
NINE MILE POINT-UNIT 2
UPDATED SAFETY ANALYSIS REPORT





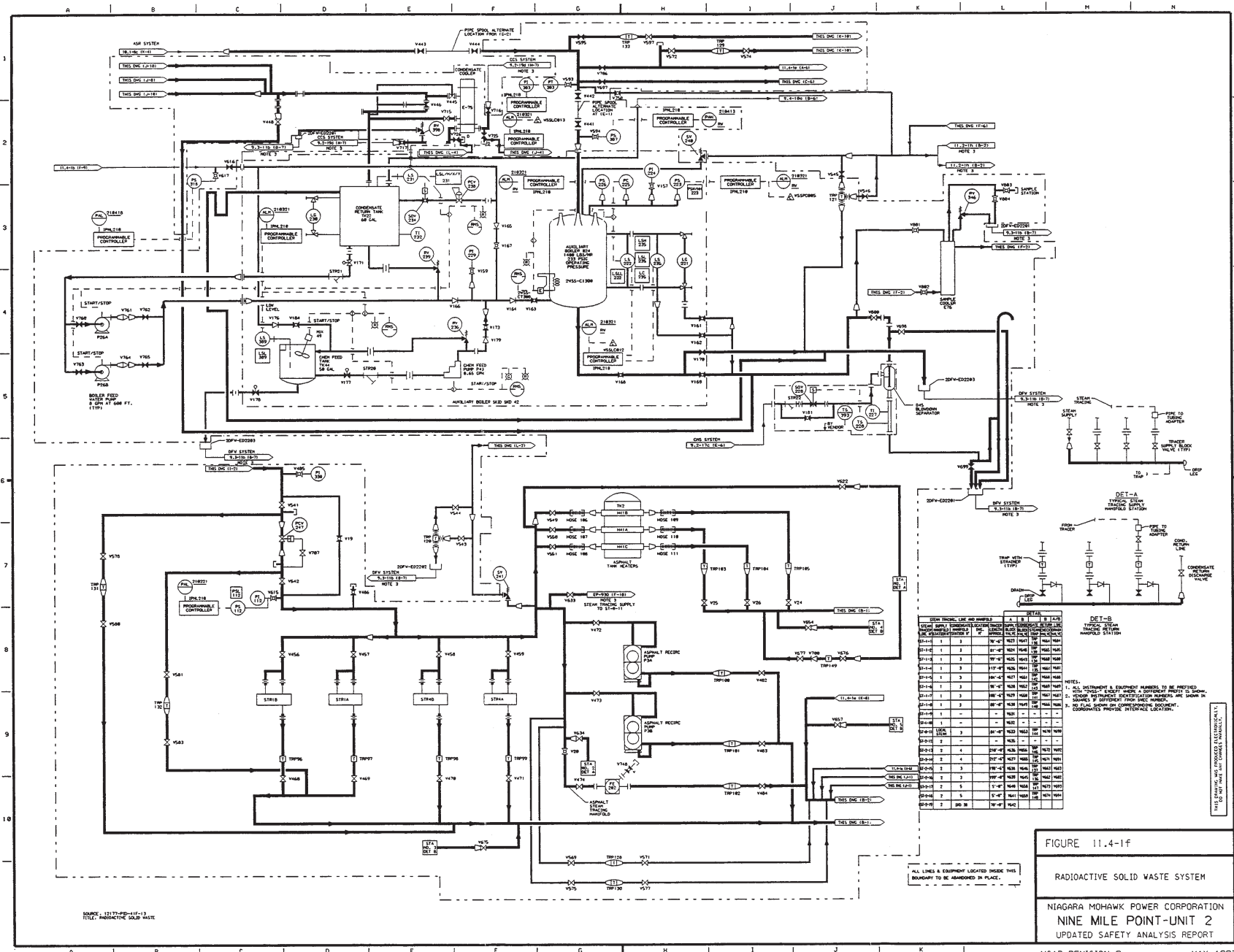
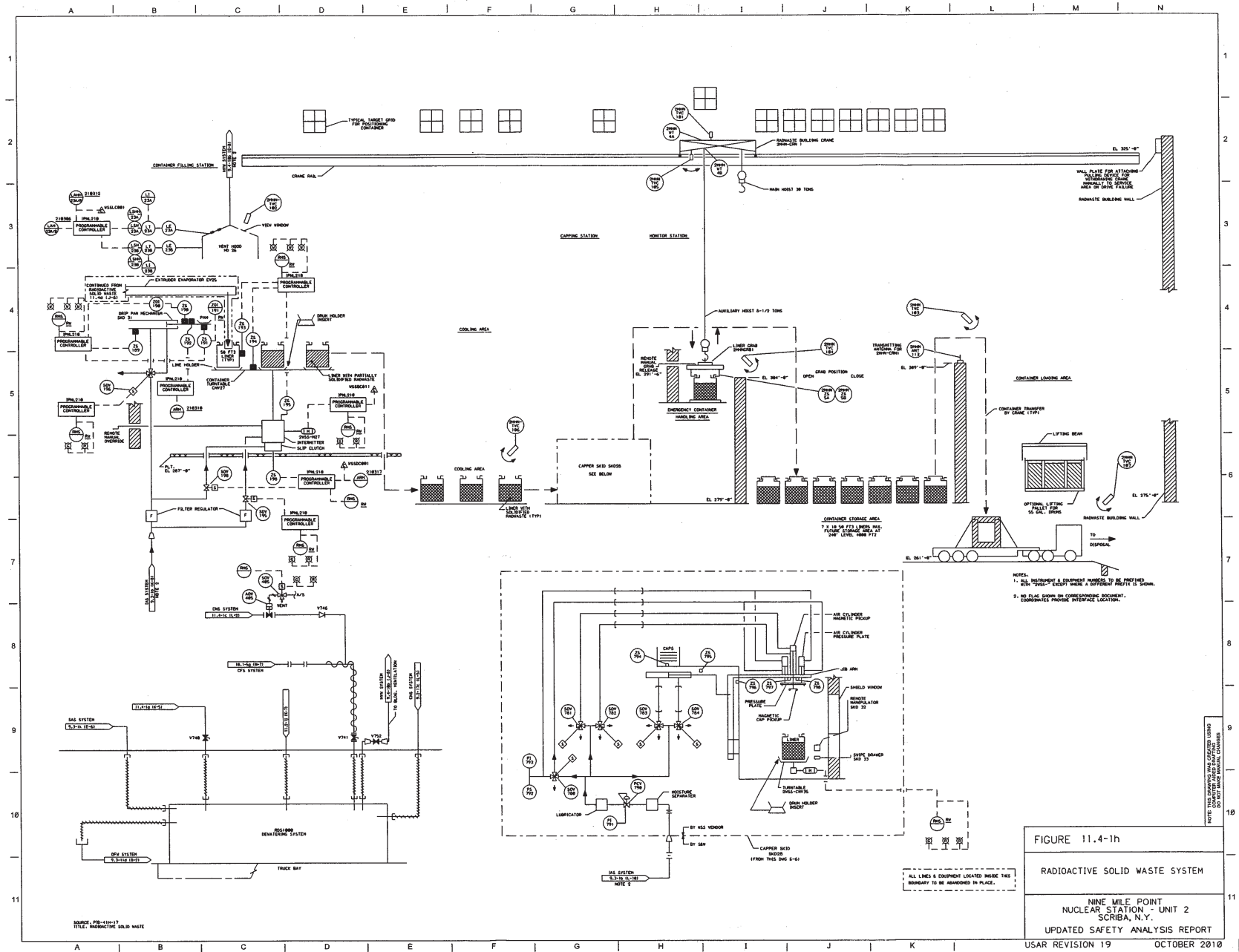
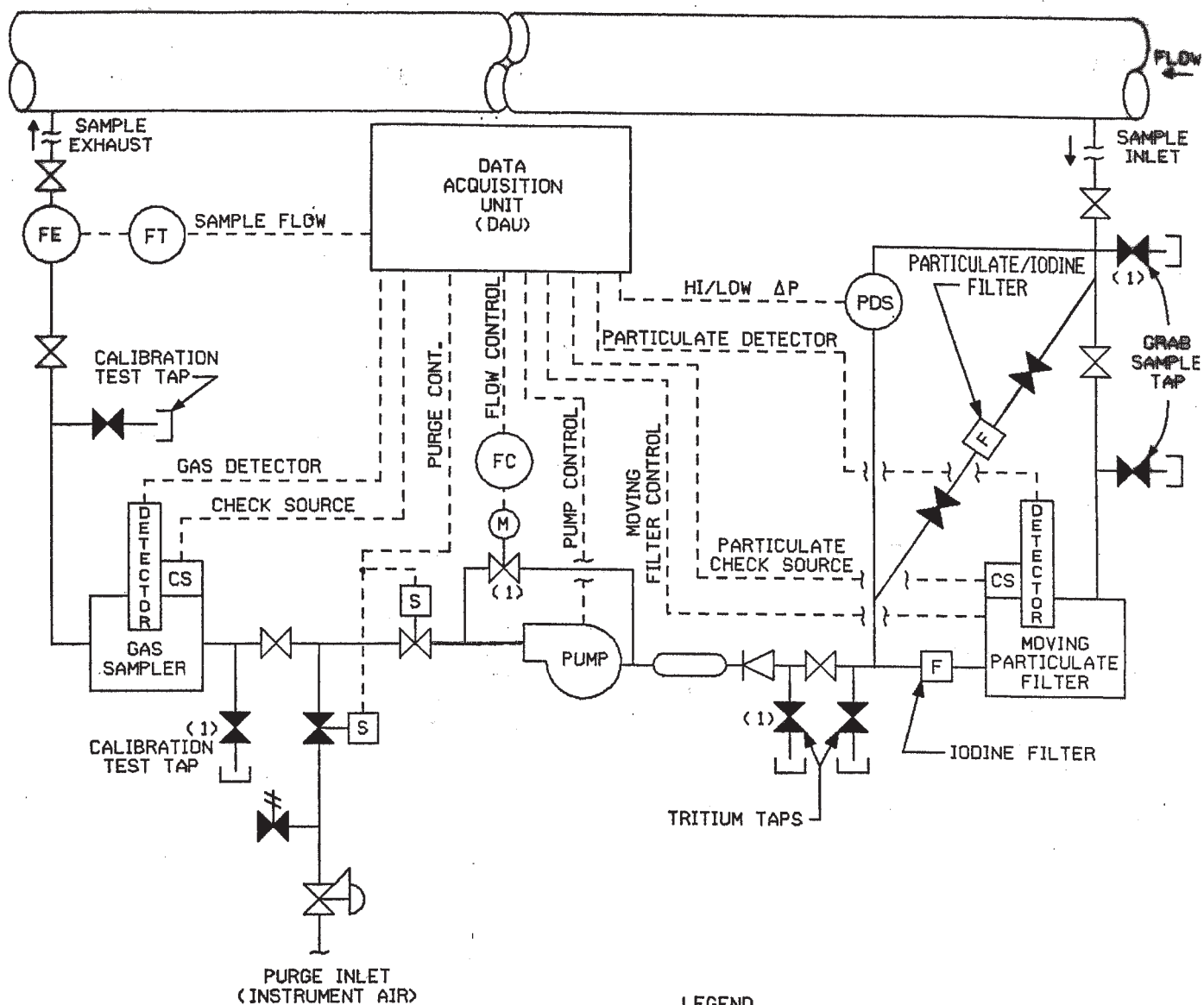


FIGURE 11.4-1f
 RADIOACTIVE SOLID WASTE SYSTEM
 NIAGARA MOHAWK POWER CORPORATION
 NINE MILE POINT-UNIT 2
 UPDATED SAFETY ANALYSIS REPORT





NOTES:

(1) GLOBE VALVE, ALL OTHER MANUALLY OPERATED VALVES ARE BALL VALVES.

OFFLINE GAS PARTICULATE MONITOR

2HVR=CAB14A
2HVR=CAB32A
2CMS=CAB10A
2CMS=CAB10B

AUTOMATIC FLOW CONTROL FUNCTION
DISABLED FOR 2CMS=CAB10A AND
2CMS=CAB10B.

LEGEND

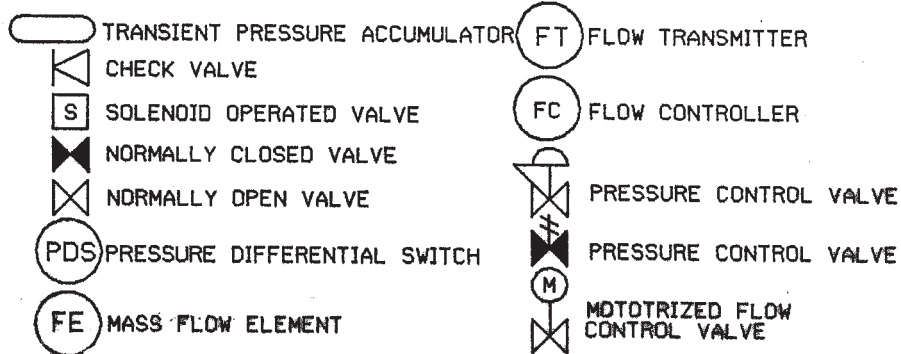


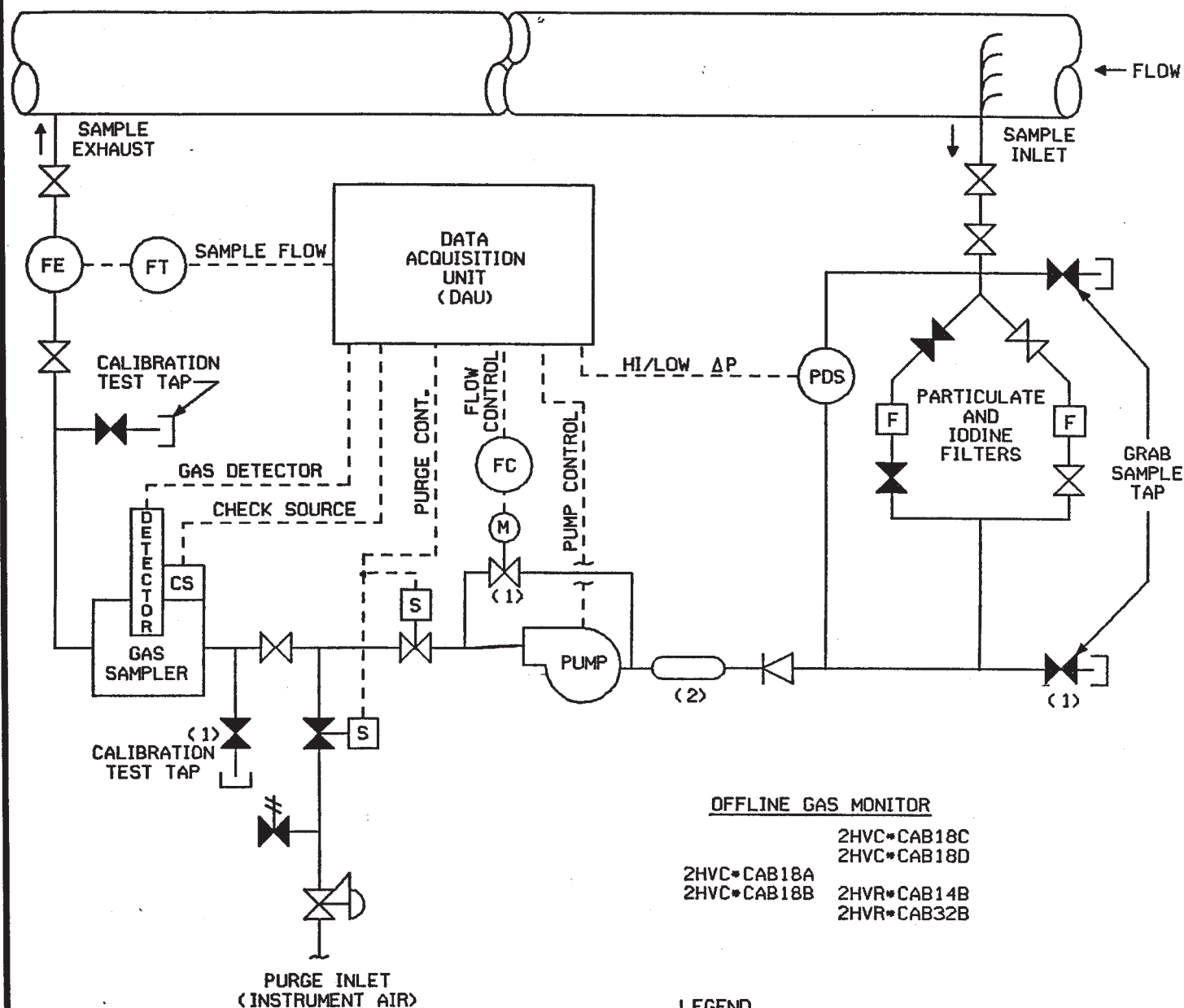
FIGURE 11.5-1

OFF-LINE GAS AND
PARTICULATE MONITOR

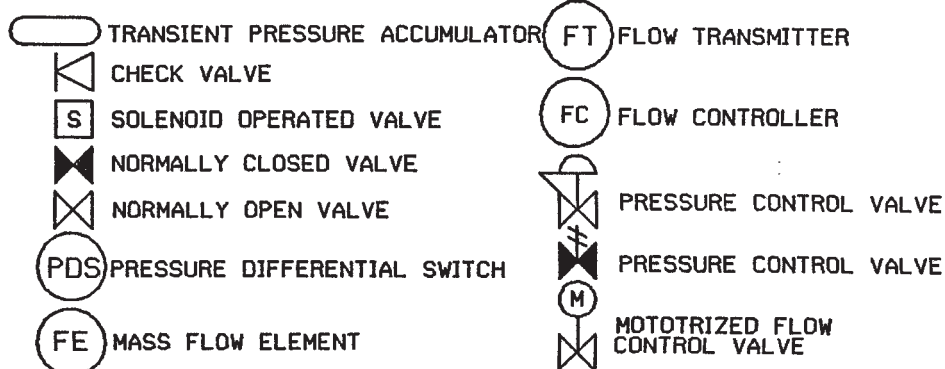
NINE MILE POINT
NUCLEAR STATION - UNIT 2
SCRIBA N.Y.

UPDATED SAFETY ANALYSIS REPORT

THIS DRAWING CREATED ELECTRONICALLY



LEGEND



NOTES:

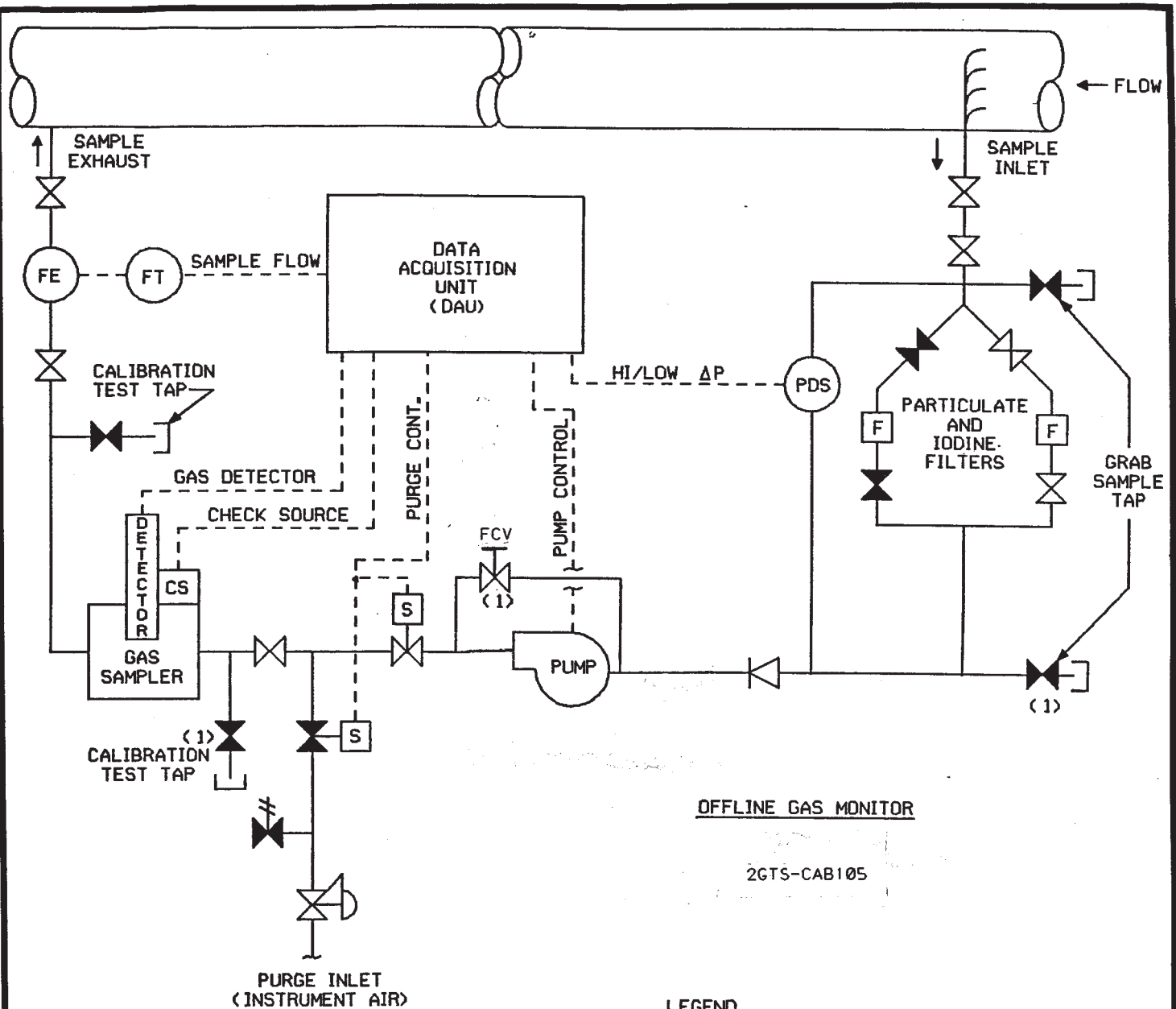
- (1) GLOBE VALVE. ALL OTHER MANUALLY OPERATED VALVES ARE BALL VALVES.
- (2) TRANSIENT PRESSURE ACCUMULATOR ASSOCIATED WITH 2HVR•CAB14B AND 2HVR•CAB32B ONLY.

FIGURE 11.5-2

OFF-LINE GAS MONITOR

NIAGARA MOHAWK POWER CORPORATION
NINE MILE POINT-UNIT 2
UPDATED SAFETY ANALYSIS REPORT

SOURCE: 0001730801005 - 01



NOTES:

(1) GLOBE VALVE. ALL OTHER MANUALLY OPERATED VALVES ARE BALL VALVES.

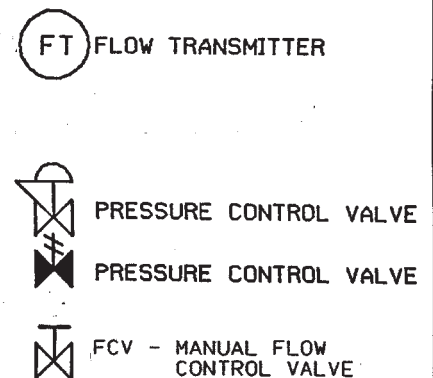
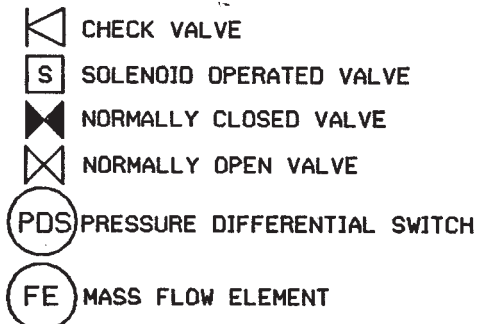
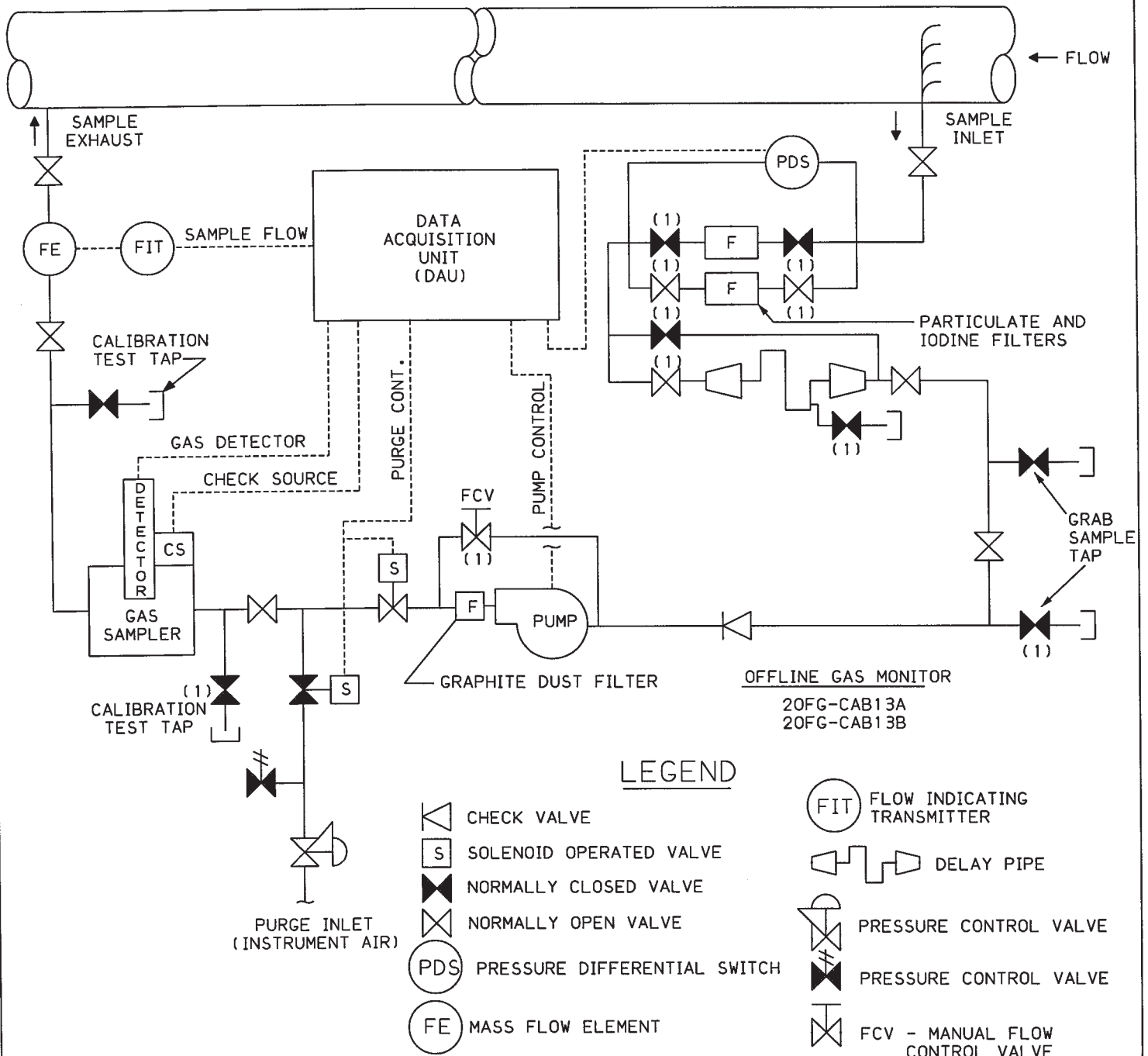


FIGURE 11.5-2a

OFF-LINE GAS MONITOR

NIAGARA MOHAWK POWER CORPORATION
NINE MILE POINT-UNIT 2
UPDATED SAFETY ANALYSIS REPORT



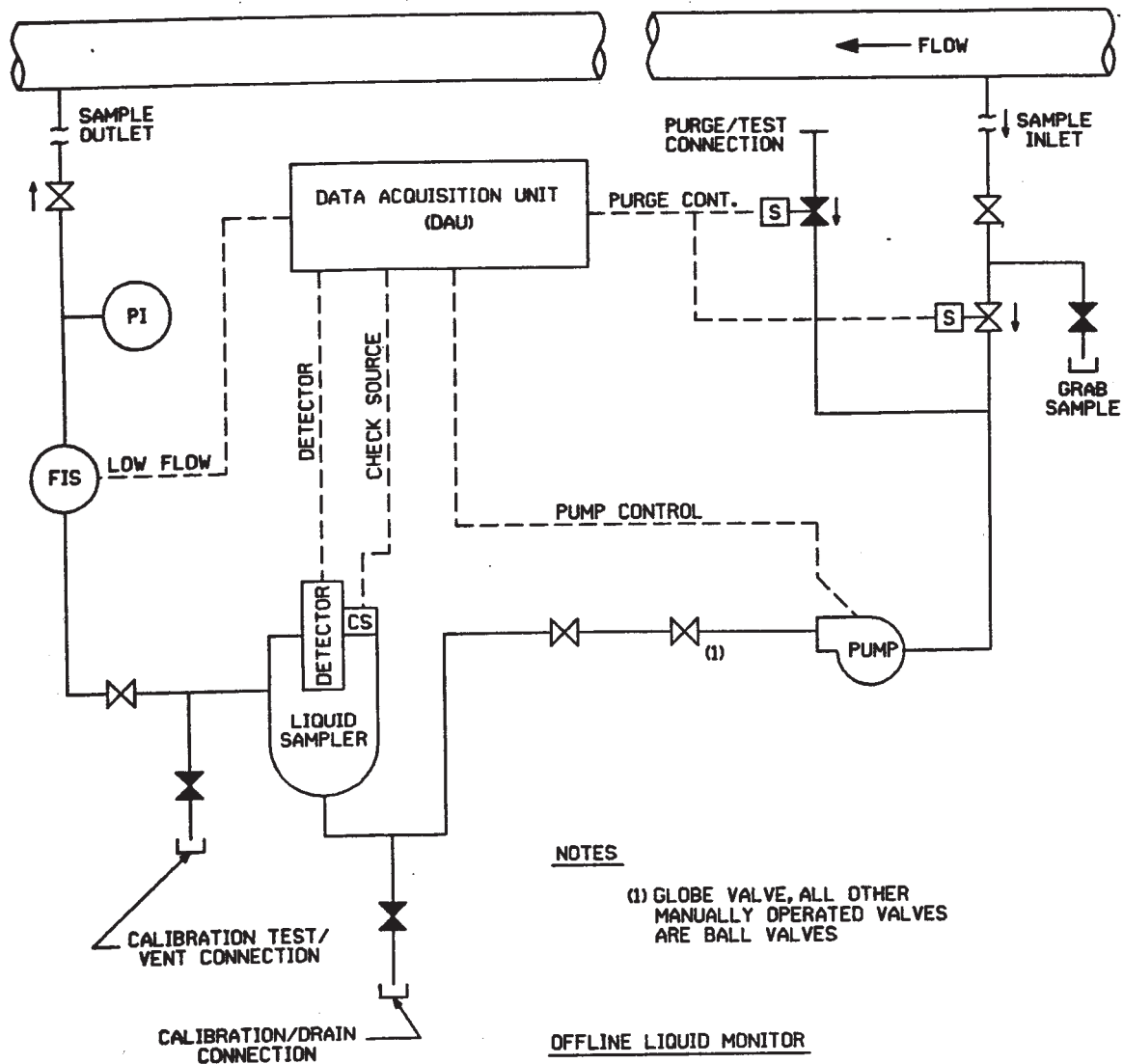
NOTES:

(1) GLOBE VALVE. ALL OTHER MANUALLY OPERATED VALVES ARE BALL VALVES.

FIGURE 11.5-2b

OFF-LINE GAS MONITOR

NIAGARA MOHAWK POWER CORPORATION
NINE MILE POINT - UNIT 2
UPDATED SAFETY ANALYSIS REPORT



NOTES

(1) GLOBE VALVE, ALL OTHER
MANUALLY OPERATED VALVES
ARE BALL VALVES

OFFLINE LIQUID MONITOR

2CCP-CAB115
2CCS-CAB152
2CWS-CAB157

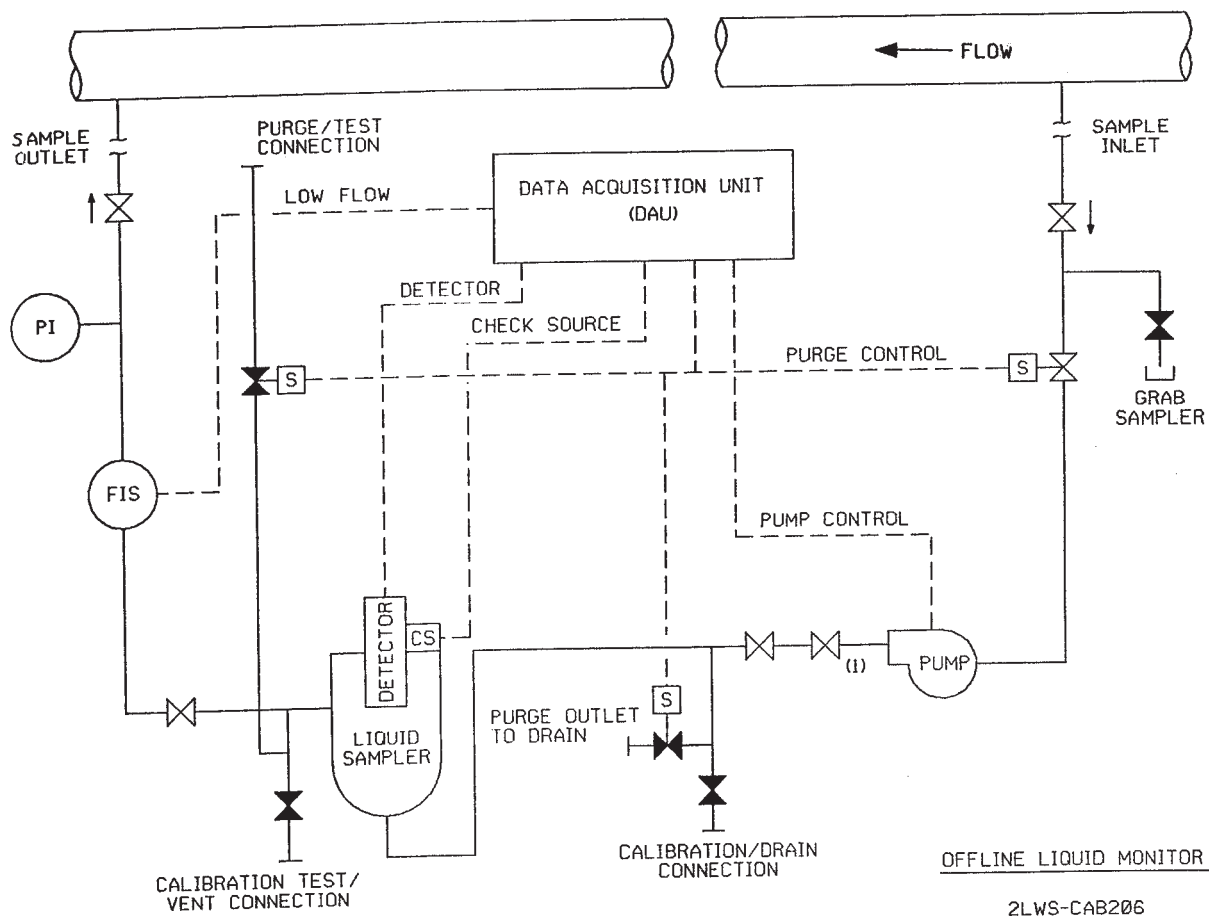
LEGEND

- PI PRESSURE INDICATOR
- FIS FLOW INDICATING SW.
- S SOLENOID OPERATED SW.
- NORMALLY CLOSED VALVE
- NORMALLY OPEN VALVE

FIGURE 11.5-3a

OFF-LINE LIQUID MONITOR

NIAGARA MOHAWK POWER CORPORATION
NINE MILE POINT-UNIT 2
UPDATED SAFETY ANALYSIS REPORT



LEGEND

- PI PRESSURE INDICATOR
- FIS FLOW INDICATING SW.
- S SOLENOID OPERATED SW.
- NORMALLY CLOSED VALVE
- NORMALLY OPEN VALVE

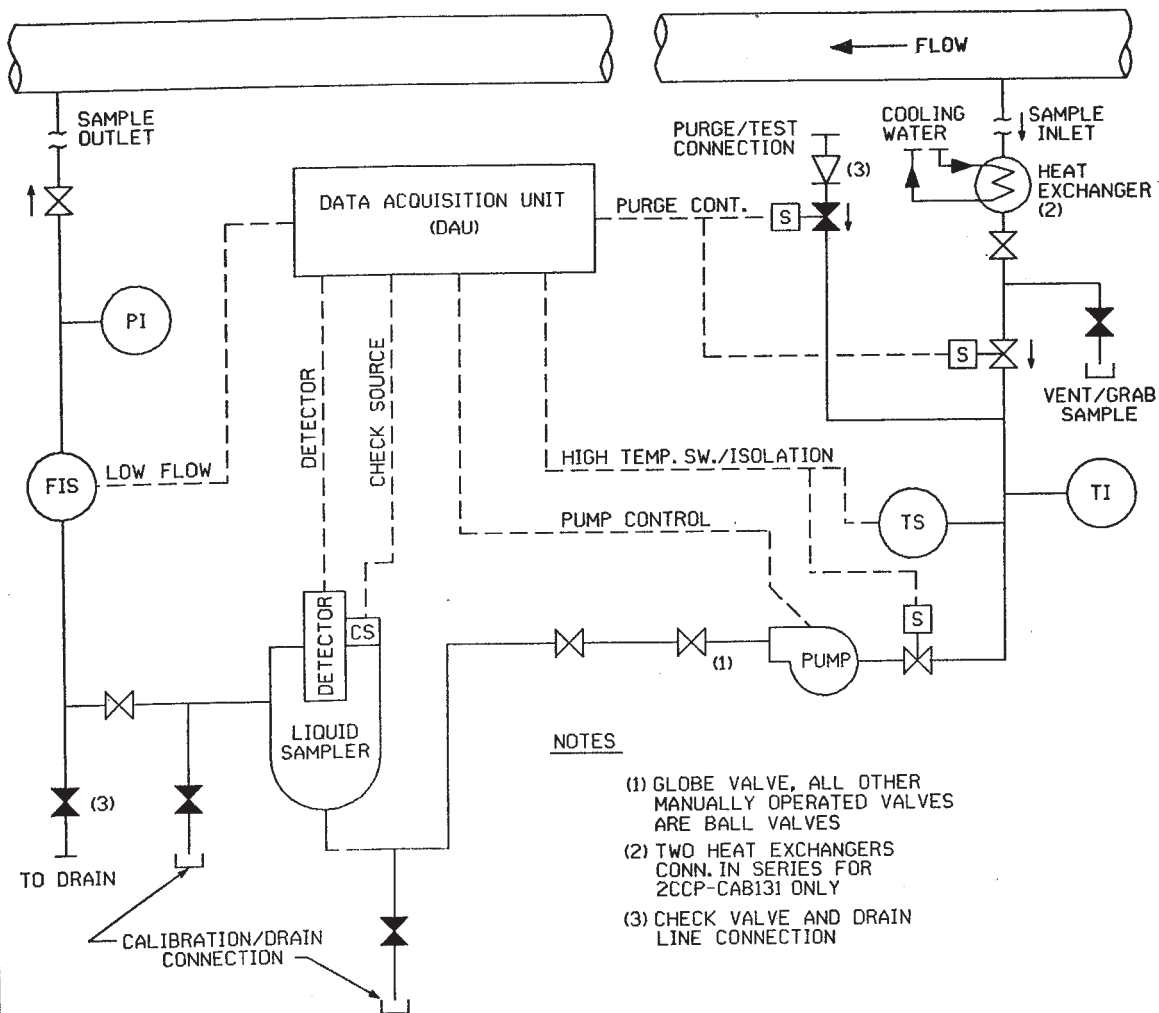
NOTES

- (1) GLOBE VALVE, ALL OTHER
MANUALLY OPERATED VALVES
ARE BALL VALVES

FIGURE 11.5-3b

OFF-LINE LIQUID MONITOR

NIAGARA MOHAWK POWER CORPORATION
NINE MILE POINT-UNIT 2
UPDATED SAFETY ANALYSIS REPORT



LEGEND

- PI PRESSURE INDICATOR
- FIS FLOW INDICATING SW.
- TI TEMP. INDICATOR
- TS TEMP. SWITCH
- [S] SOLENOID OPERATED SW.
- ☒ NORMALLY CLOSED VALVE
- ☒ NORMALLY OPEN VALVE

OFFLINE LIQUID MONITOR

2CCP-CAB131
2SFC-CAB142

USAR REVISION 0

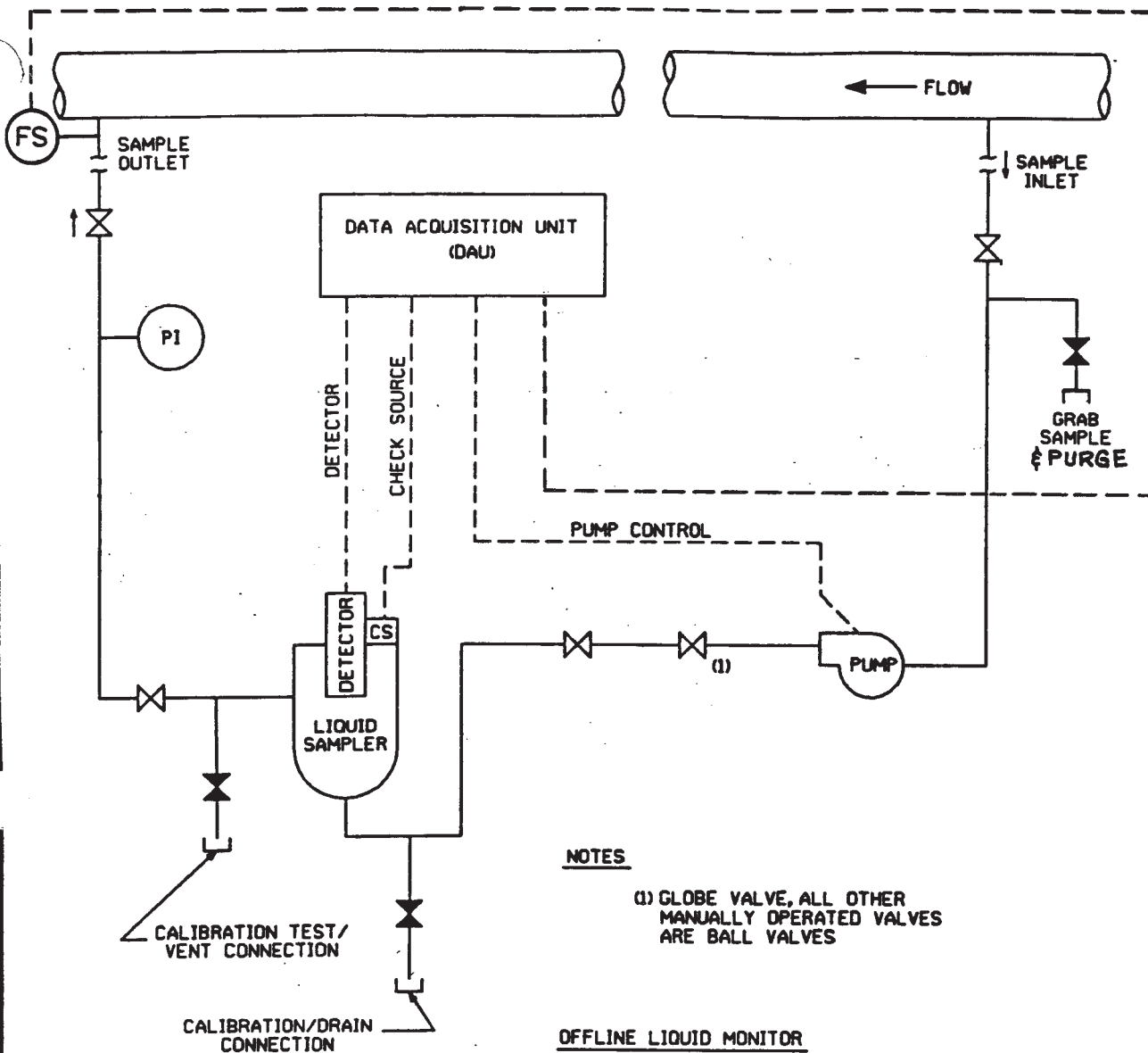
APRIL 1989

FIGURE 11.5-3c

OFF-LINE LIQUID MONITOR

NIAGARA MOHAWK POWER CORPORATION
NINE MILE POINT-UNIT 2
UPDATED SAFETY ANALYSIS REPORT

LOW FLOW/NORMAL FLOW



NOTES

- (1) GLOBE VALVE, ALL OTHER MANUALLY OPERATED VALVES ARE BALL VALVES

OFFLINE LIQUID MONITOR

2SWP-CAB23A
2SWP-CAB23B
2SWP-CAB146A
2SWP-CAB146B

LEGEND

- PI PRESSURE INDICATOR
- FS FLOW SW.
- S SOLENOID OPERATED SW.
- ✕ NORMALLY CLOSED VALVE
- ✕ NORMALLY OPEN VALVE

FIGURE 11.5-3d

OFF-LINE LIQUID MONITOR

NIAGARA MOHAWK POWER CORPORATION
NINE MILE POINT-UNIT 2
UPDATED SAFETY ANALYSIS REPORT

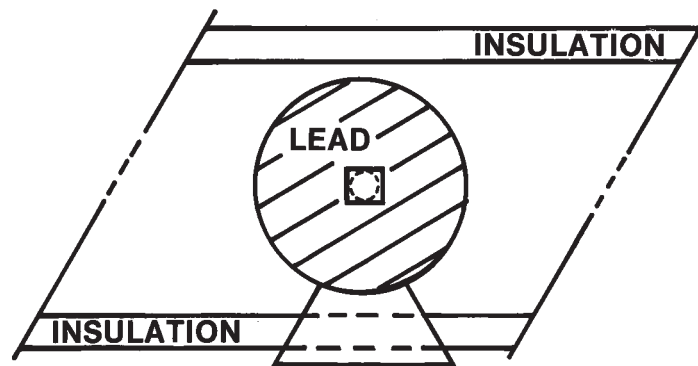
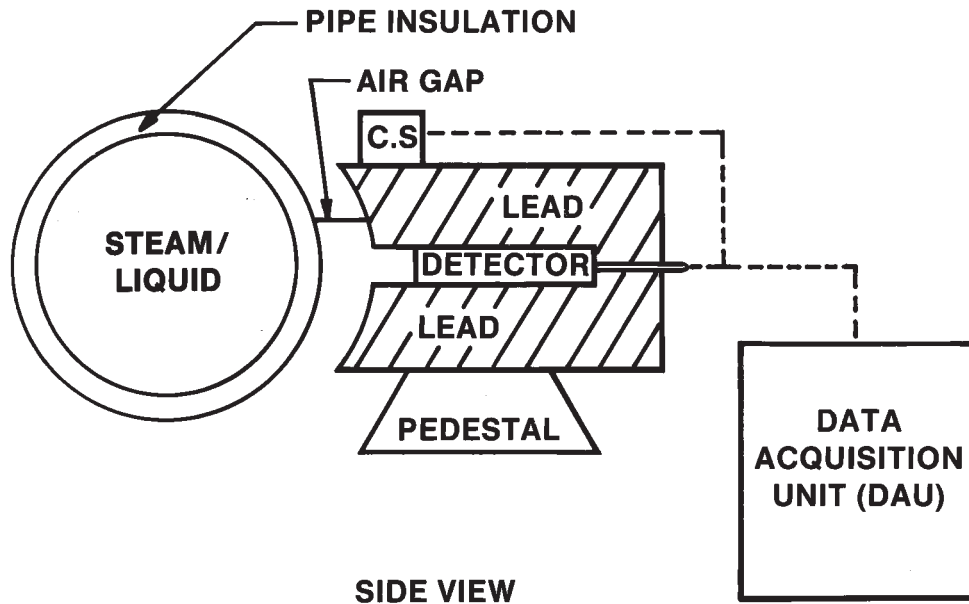


FIGURE 11.5-4

ON-LINE STEAM OR
LIQUID MONITOR

NIAGARA MOHAWK POWER CORPORATION
NINE MILE POINT-UNIT 2
FINAL SAFETY ANALYSIS REPORT

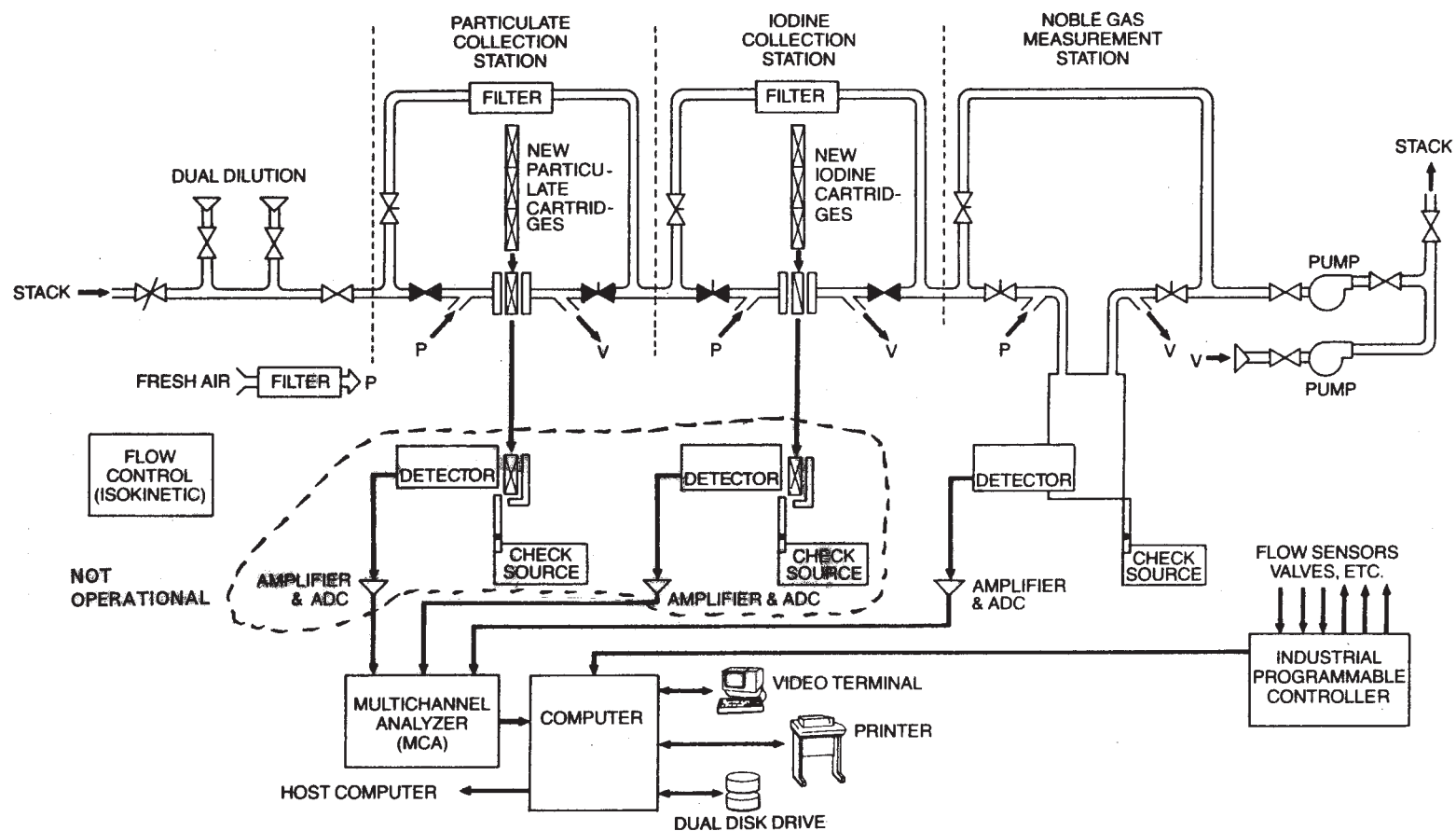
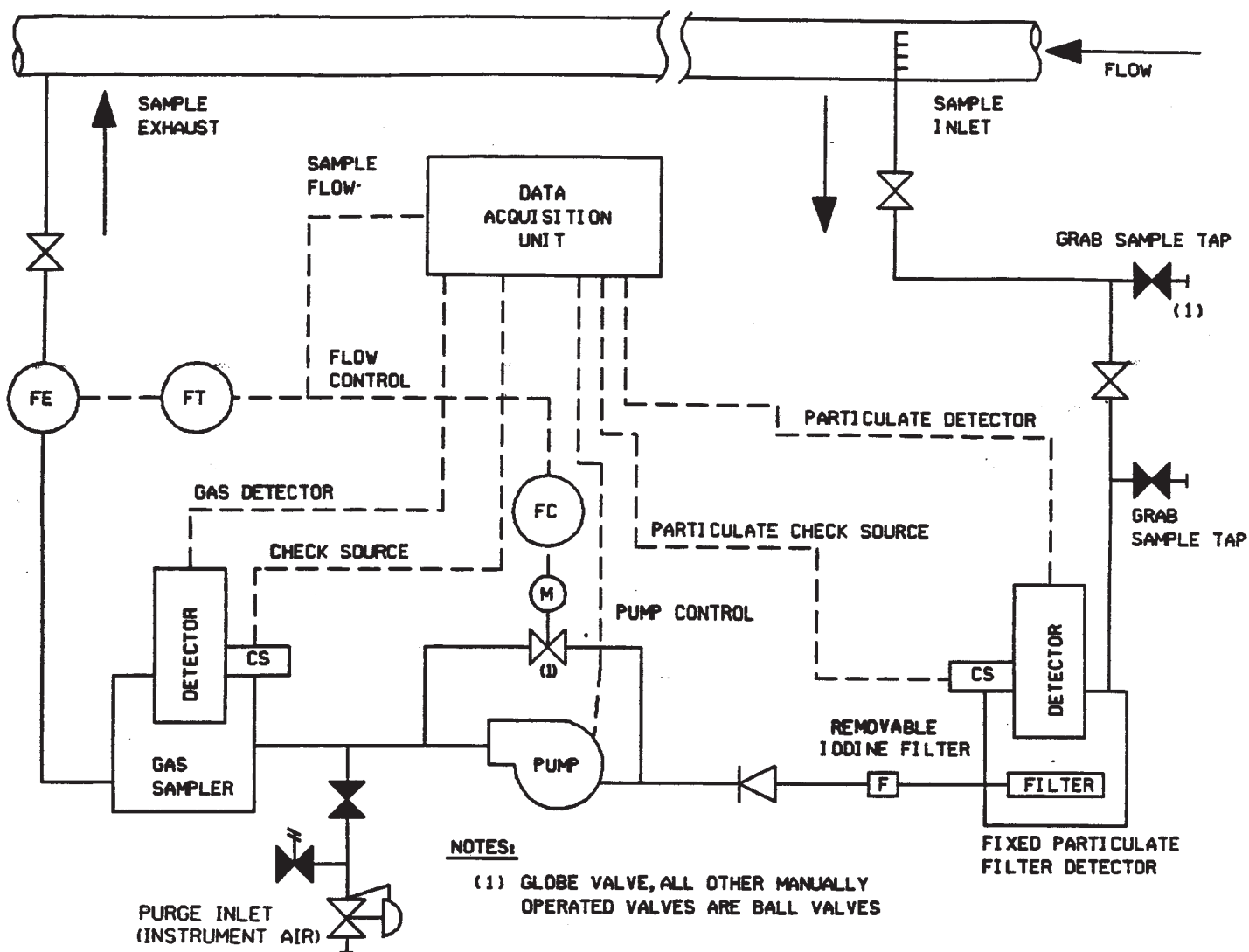


FIGURE 11.5-5

BLOCK DIAGRAM
TYPICAL GASEOUS EFFLUENT
MONITORING SYSTEM

NIAGARA MOHAWK POWER CORPORATION
NINE MILE POINT-UNIT 2
UPDATED SAFETY ANALYSIS REPORT



LEGEND

- MOTORIZED FLOW CONTROL VALVE
- CHECK VALVE
- SOLENIOD OPERATED VALVE
- NORMALLY CLOSED VALVE
- NORMALLY OPEN VALVE
- FLOW CONTROLLER
- MASS FLOW ELEMENT
- FLOW TRANSMITTER
- PRESSURE CONTROL VALVE
- PRESSURE CONTROL VALVE

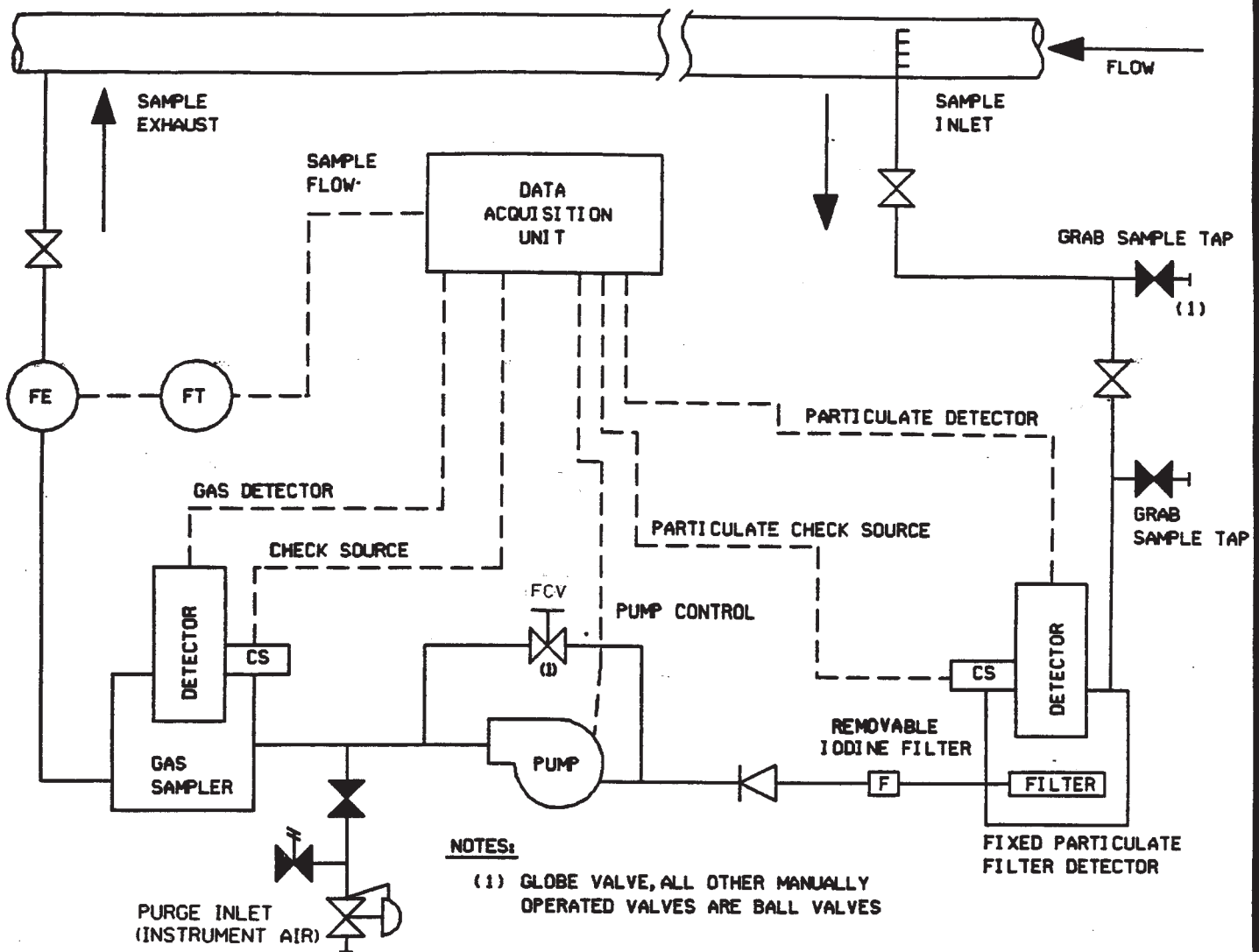
MOBILE OFFLINE GAS PARTICULATE MONITOR

2HVW-CAB 195	2HVR-CAB 229
	2HVR-CAB 237
2HVW-CAB 197	2HVR-CAB 238
2HVW-CAB 199	2HVT-CAB 206

FIGURE 11.5-6

ACCEPTABLE CONTINUOUS
AIRBORNE MONITOR

NIAGARA MOHAWK POWER CORPORATION
NINE MILE POINT-UNIT 2
UPDATED SAFETY ANALYSIS REPORT



LEGEND

- FCV - MANUAL FLOW CONTROL VALVE
- CHECK VALVE
- SOLENOID OPERATED VALVE
- NORMALLY CLOSED VALVE
- NORMALLY OPEN VALVE
- FLOW CONTROLLER
- MASS FLOW ELEMENT
- FLOW TRANSMITTER
- PRESSURE CONTROL VALVE
- PRESSURE CONTROL VALVE

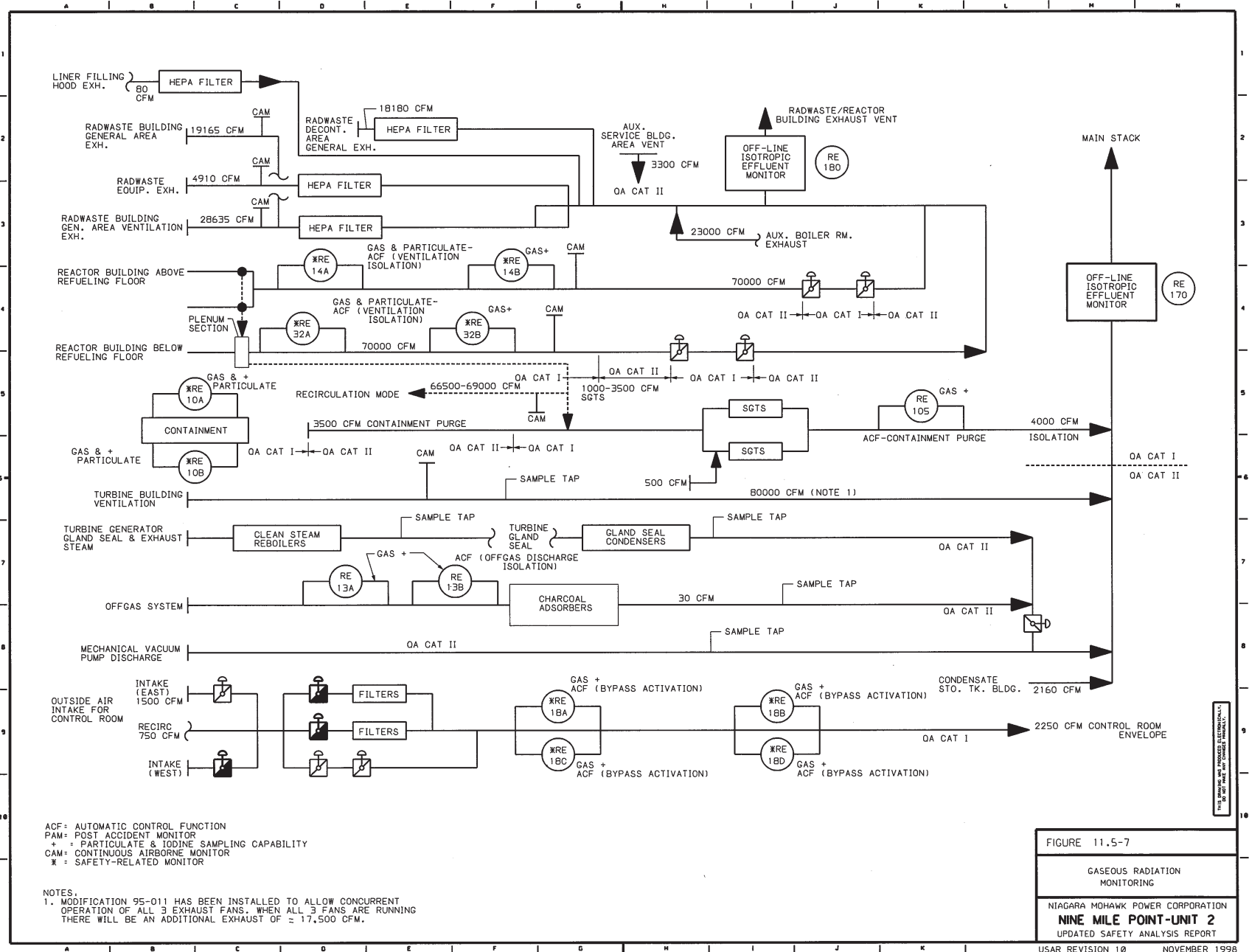
MOBILE OFFLINE GAS PARTICULATE MONITOR

2HVV-CAB196

FIGURE 11.5-6a

ACCEPTABLE CONTINUOUS
AIRBORNE MONITOR

NIAGARA MOHAWK POWER CORPORATION
 NINE MILE POINT-UNIT 2
 UPDATED SAFETY ANALYSIS REPORT



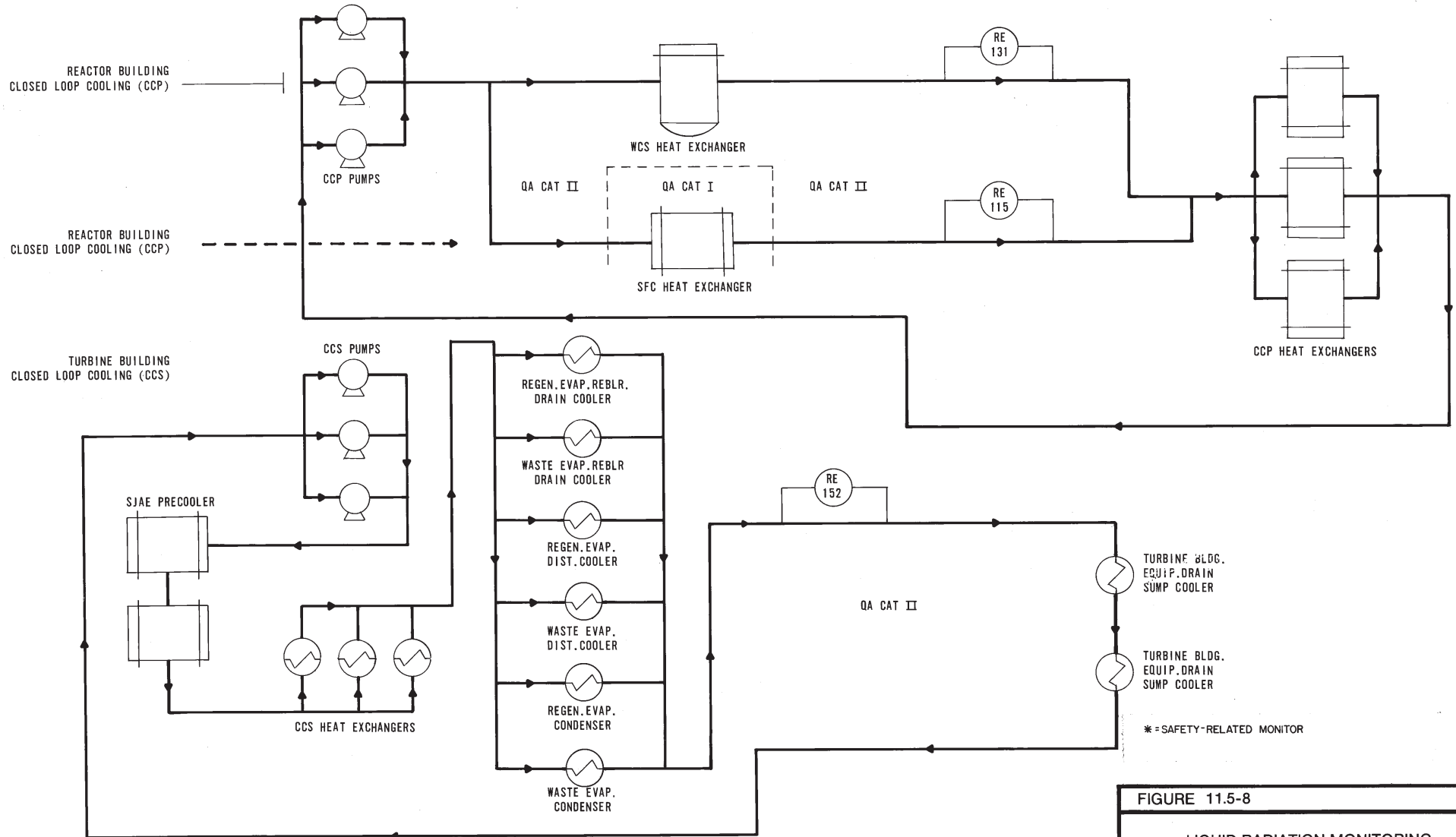


FIGURE 11.5-8

LIQUID RADIATION MONITORING
SHEET 1 OF 2

NIAGARA MOHAWK POWER CORPORATION
NINE MILE POINT-UNIT 2
FINAL SAFETY ANALYSIS REPORT

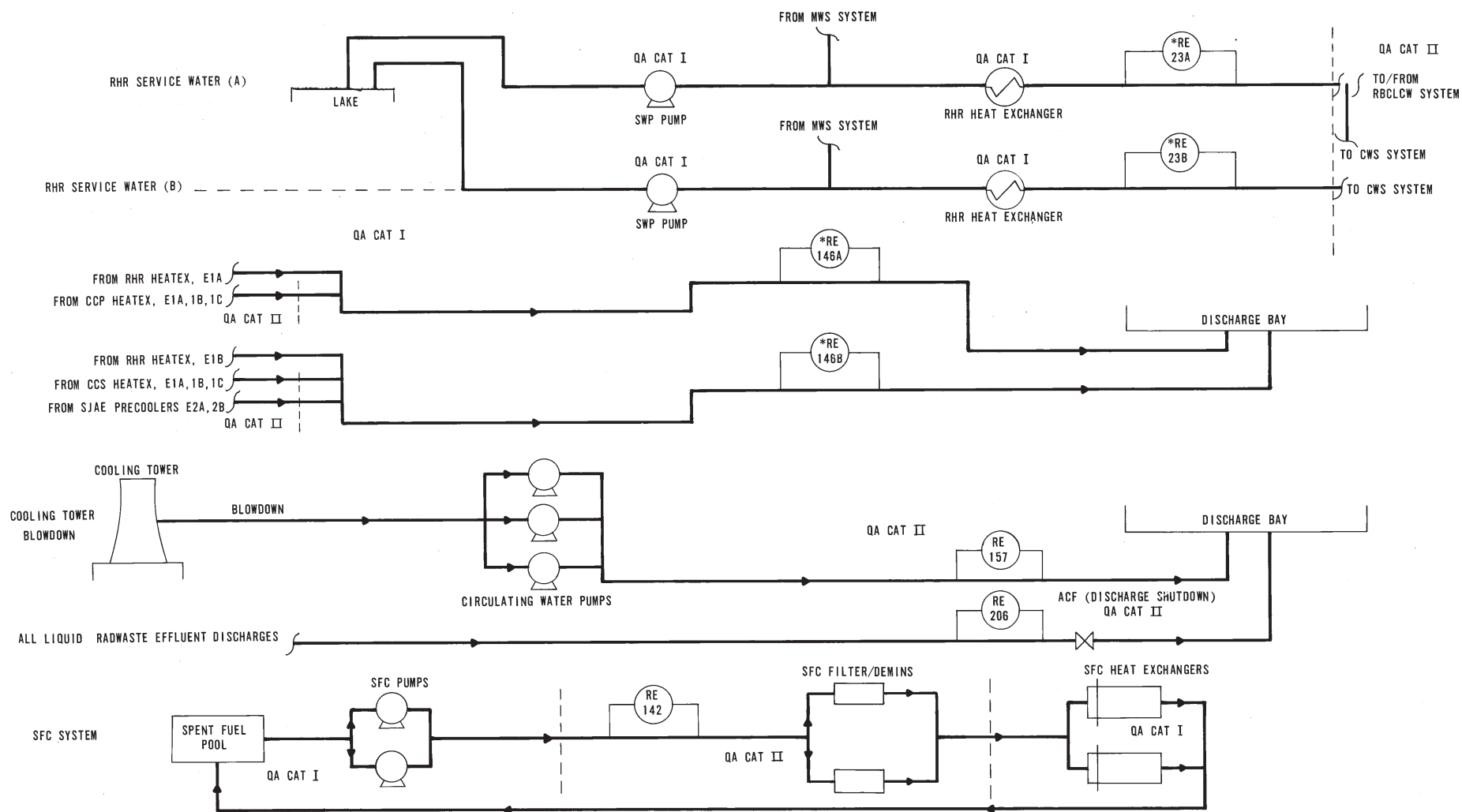


FIGURE 11.5-8

LIQUID RADIATION MONITORING
SHEET 2 OF 2

NIAGARA MOHAWK POWER CORPORATION
NINE MILE POINT-UNIT 2
FINAL SAFETY ANALYSIS REPORT