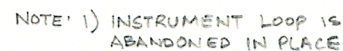


**NOTES:**

- 1 THE P & I D/C & I DIAGRAMS FOR THE C & I FUNCTION SYMBOLS ARE SHOWN ON DRAWING MIO-9106 UNLESS OTHERWISE NOTED SHEET NUMBER & DIAGRAM REFERENCE ARE SHOWN IN THE FUNCTION SYMBOL.
- 2 NUCLEAR SAFETY-RELATED DUCTWORK SYSTEM IS SHOWN ON THIS & THIS CLASSIFICATION APPLIES TO DUCTWORK AND DUCTWORK ACCESSORIES (EXCEPT DAMPERS) FURNISHED, FABRICATED AND INSTALLED UNDER SPECIFICATION K-2910. FOR SAFETY CLASSIFICATION OF DUCTWORK SEE CLASSIFICATION OF DAMPERS. FOR SAFETY CLASSIFICATION OF EQUIPMENT, SEE EQUIPMENT LIST. FOR SAFETY CLASSIFICATION OF PIPING/VALVES SEE LINE/VALVE LIST.
- 3 FOR SAFETY CLASSIFICATION OF DAMPERS, SEE APPROPRIATE DAMPER LIST.





**NUCLEAR SAFETY RELATED  
ITEMS ARE SHOWN ON THIS DRAWING  
( FOR SAFETY CLASSIFICATION SEE PIPING,  
EQUIPMENT, VALVE, OR INSTRUMENT LISTS. )**

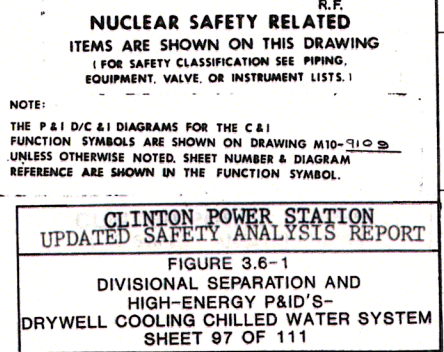
NOTE:  
THE P & I D/C & I DIAGRAMS FOR THE C & I  
FUNCTION SYMBOLS ARE SHOWN ON DRAWING M10-9109  
UNLESS OTHERWISE NOTED. SHEET NUMBER & DIAGRAM  
REFERENCE ARE SHOWN IN THE FUNCTION SYMBOL.

**CLINTON POWER STATION**  
**UPDATED SAFETY ANALYSIS REPORT**

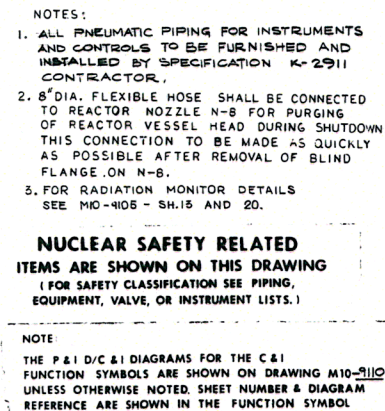
---

FIGURE 3.6-1  
 DIVISIONAL SEPARATION AND  
 HIGH-ENERGY P&ID'S-  
 DRYWELL COOLING CHILLED WATER SYSTEM  
 SHEET 96 OF 111











1111-SOW  
108-80-00 31V0  
108-80-00 31V0

REVISION 7  
JUNE 1997

IVR01A  
CONTAINMENT BLDG. VENT.  
SUPPLY AIR HEATING COIL  
K-2908

IVR02A  
CONTAINMENT BLDG. VENT.  
SUPPLY AIR COOLING COIL  
K-2906

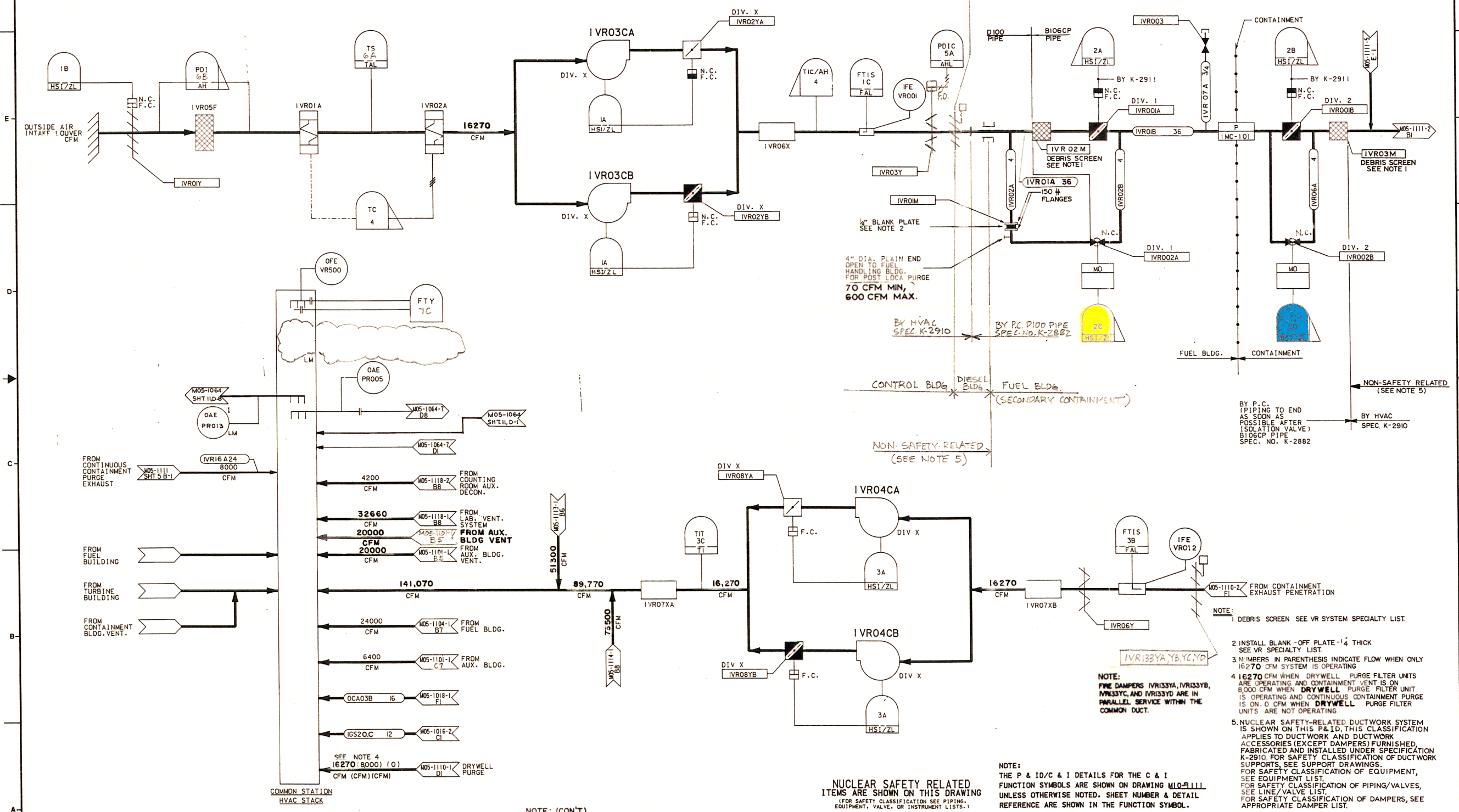
IVR03CA,CB  
CONTAINMENT BLDG. VENT.  
SUPPLY FANS 1A, 1B  
K-2904

IVR04CA,CB  
CONTAINMENT BLDG. VENT.  
EXHAUST FANS 1A, 1B  
K-2904

IVR07XA & IVR07XB  
SILENCER  
K-2910

NOTE:  
FIRE DAMPERS IVR33YA AND  
IVR33YB ARE IN PARALLEL  
SERVICE WITHIN THE COMMON  
DUCT.

IVR132YA,YB



NOTE: (CON'T.)

6. AIR FLOWS SHOWN FOR FANS IVR03CA/CB AND IVR04CA/CB  
MAY RESULT IN UNSTABLE FAN OPERATION. IPC HAS DETER-  
MINED THAT THIS CONDITION IS ACCEPTABLE UNTIL AT LEAST  
THE FIRST OUTAGE. (REF. IPC LTR. NO. S-6083).

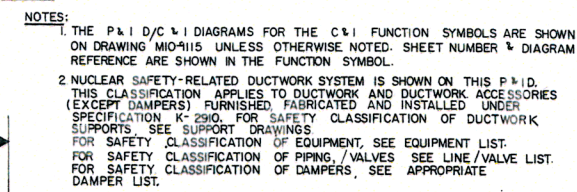
NUCLEAR SAFETY RELATED  
ITEMS ARE SHOWN ON THIS DRAWING  
(FOR SAFETY CLASSIFICATION SEE PIPING,  
EQUIPMENT, VALVE, OR INSTRUMENT LISTS.)

NOTE:  
THE P & ID/C & I DETAILS FOR THE C & I  
FUNCTION SYMBOLS ARE SHOWN ON DRAWING M05-1111  
UNLESS OTHERWISE NOTED. SHEET NUMBER & DETAIL  
REFERENCE ARE SHOWN IN THE FUNCTION SYMBOL.

- NOTE:
1. DEBRIS SCREEN SEE VR SYSTEM SPECIALTY LIST
  2. INSTALL BLANK-OFF PLATE 1/4 THICK  
SEE VR SPECIALTY LIST
  3. NUMBERS IN PARENTHESIS INDICATE FLOW WHEN ONLY  
16270 CFM SYSTEM IS OPERATING
  4. 16270 CFM WHEN DRYWELL PURGE FILTER UNITS  
ARE OPERATING AND CONTAINMENT VENT IS ON  
8,000 CFM WHEN DRYWELL PURGE FILTER UNIT  
IS OPERATING AND CONTINUOUS CONTAINMENT PURGE  
IS ON. 0 CFM WHEN DRYWELL PURGE FILTER  
UNITS ARE NOT OPERATING
  5. NUCLEAR SAFETY-RELATED DUCTWORK SYSTEM  
IS SHOWN ON THIS P&ID. THIS CLASSIFICATION  
APPLIES TO DUCTWORK AND DUCTWORK  
ACCESSORIES (EXCEPT DAMPERS) FURNISHED,  
FABRICATED AND INSTALLED UNDER SPECIFICATION  
K-2910. FOR SAFETY CLASSIFICATION OF DUCTWORK  
SUPPORTS, SEE SUPPORT DRAWINGS.  
FOR SAFETY CLASSIFICATION OF EQUIPMENT,  
SEE EQUIPMENT LIST.  
FOR SAFETY CLASSIFICATION OF PIPING/VALVES,  
SEE LINE/VALVE LIST.  
FOR SAFETY CLASSIFICATION OF DAMPERS, SEE  
APPROPRIATE DAMPER LIST.

CLINTON POWER STATION  
UPDATED SAFETY ANALYSIS REPORT  
FIGURE 3.6-1  
DIVISIONAL SEPARATION AND  
HIGH-ENERGY P&ID'S  
CONTAINMENT BLDG. HVAC  
SHEET 99 OF 111





# CLINTON POWER STATION UPDATED SAFETY ANALYSIS REPORT

FIGURE 3.6-1  
DIVISIONAL SEPARATION AND  
HIGH-ENERGY P&ID'S-  
ESSENTIAL SWITCHGEAR HEAT REMOVAL  
SHEET 100 OF 111