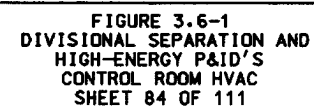


CLINTON POWER STATION
UPDATED SAFETY ANALYSIS REPORT

FIGURE 3.6-1
DIVISIONAL SEPARATION AND
HIGH-ENERGY P&ID'S-
CONCENTRATE TANK
SHEET 83 OF 111



201-1102

OVC03CA,CB
CONTROL ROOM HVAC
SUPPLY FAN A, B
K-2904

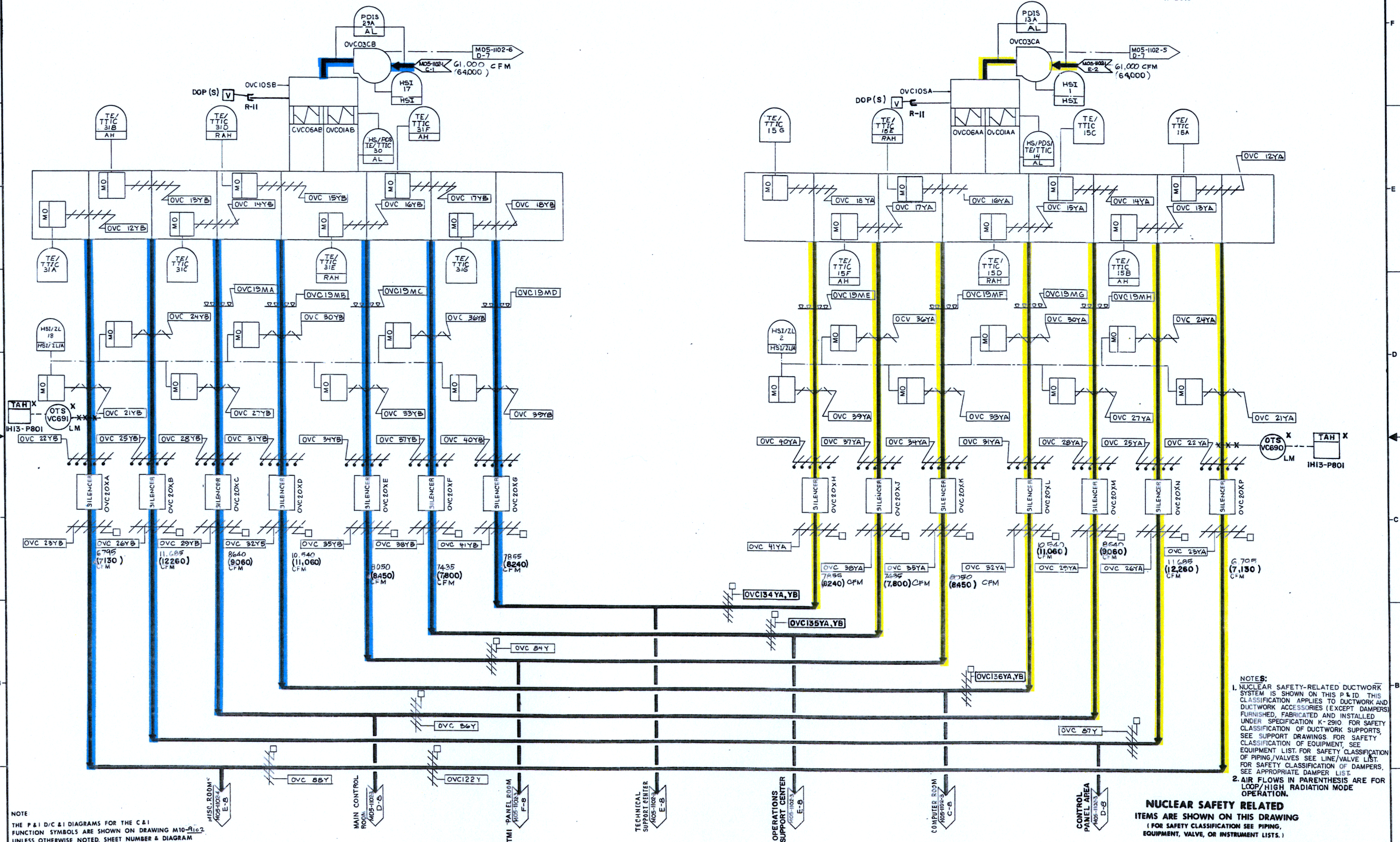
OVC01AA, AB
CONTROL ROOM HVAC
ELECTRIC HEATING COIL A, B
K-2902

OVC06AA, AB
CONTROL ROOM HVAC
COOLING COIL A, B
K-2902

OVC10SA, SB
CONTROL ROOM HVAC
AIR HANDLING UNIT A, B
K-2902

OVC19MA, MB, MC, MD, ME, MF, MG & MH
CONTROL ROOM SYSTEM HVAC
HUMIDIFIERS
K-2910

OVC20XA, XB, XC, XD, XE, XF, XG, XH, XI, XJ, XK,
XL, XM, XN & XP
CONTROL ROOM SILENCERS
K-2910



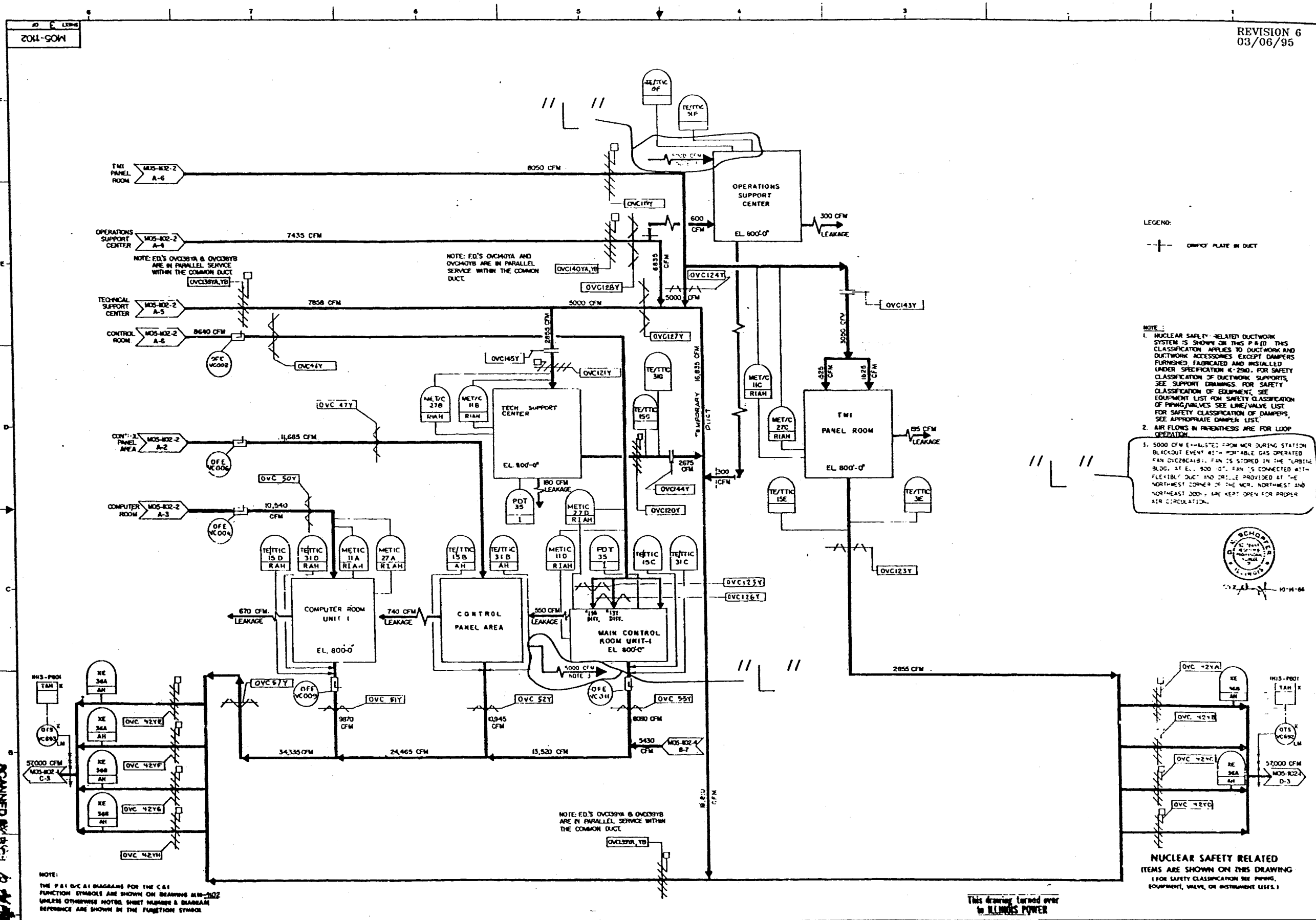
NOTE
THE P&ID/C&I DIAGRAMS FOR THE C&I
FUNCTION SYMBOLS ARE SHOWN ON DRAWING M10-91c2
UNLESS OTHERWISE NOTED, SHEET NUMBER & DIAGRAM
REFERENCE ARE SHOWN IN THE FUNCTION SYMBOL

NOTES:
1. NUCLEAR SAFETY-RELATED DUCTWORK
SYSTEM IS SHOWN ON THIS P&ID. THIS
CLASSIFICATION APPLIES TO DUCTWORK AND
DUCTWORK ACCESSORIES (EXCEPT DAMPERS)
FURNISHED, FABRICATED AND INSTALLED
UNDER SPECIFICATION K-2910. FOR SAFETY
CLASSIFICATION OF DUCTWORK SUPPORTS,
SEE SUPPORT DRAWINGS FOR SAFETY
CLASSIFICATION OF EQUIPMENT, SEE
EQUIPMENT LIST. FOR SAFETY CLASSIFICATION
OF PIPING/VALVES SEE LINE/VALVE LIST.
FOR SAFETY CLASSIFICATION OF DAMPERS,
SEE APPROPRIATE DAMPER LIST.
2. AIR FLOWS IN PARENTHESIS ARE FOR
LOOP/HIGH RADIATION MODE
OPERATION.

NUCLEAR SAFETY RELATED
ITEMS ARE SHOWN ON THIS DRAWING
(FOR SAFETY CLASSIFICATION SEE PIPING,
EQUIPMENT, VALVE, OR INSTRUMENT LISTS.)

CLINTON POWER STATION
UPDATED SAFETY ANALYSIS REPORT

FIGURE 3.6-1
DIVISIONAL SEPARATION AND
HIGH-ENERGY P&ID'S
CONTROL ROOM HVAC
SHEET 85 OF 111



REVISION 6
03/06/95

LEGEND:

---+--- DUCT PLATE IN DUCT

NOTE:

1. NUCLEAR SAFETY RELATED DUCTWORK SYSTEM IS SHOWN ON THIS P&ID. THIS CLASSIFICATION APPLIES TO DUCTWORK AND DUCTWORK ACCESSORIES EXCEPT DAMPERS FURNISHED, FABRICATED AND INSTALLED UNDER SPECIFICATION K-2940. FOR SAFETY CLASSIFICATION OF DUCTWORK, SUPPORTS, SEE SUPPORT DRAWINGS. FOR SAFETY CLASSIFICATION OF EQUIPMENT, SEE EQUIPMENT LIST FOR SAFETY CLASSIFICATION OF PIPING/VALVES. SEE LINE/VALVE LIST FOR SAFETY CLASSIFICATION OF DAMPERS, SEE APPROPRIATE DAMPER LIST.
2. AIR FLOWS IN PARENTHESES ARE FOR LOOP OPERATION.
3. 5000 CFM EXHAUSTED FROM MCR DURING STATION BLACKOUT EVENT WITH PORTABLE GAS OPERATED FAN OVC20A18. FAN IS STORED IN THE TURBINE BLDG. AT EL. 800'-0". FAN IS CONNECTED WITH FLEXIBLE DUCT AND DRUM PROVIDED AT THE NORTHWEST CORNER OF THE MCR. NORTHWEST AND NORTHEAST DOORS ARE KEPT OPEN FOR PROPER AIR CIRCULATION.



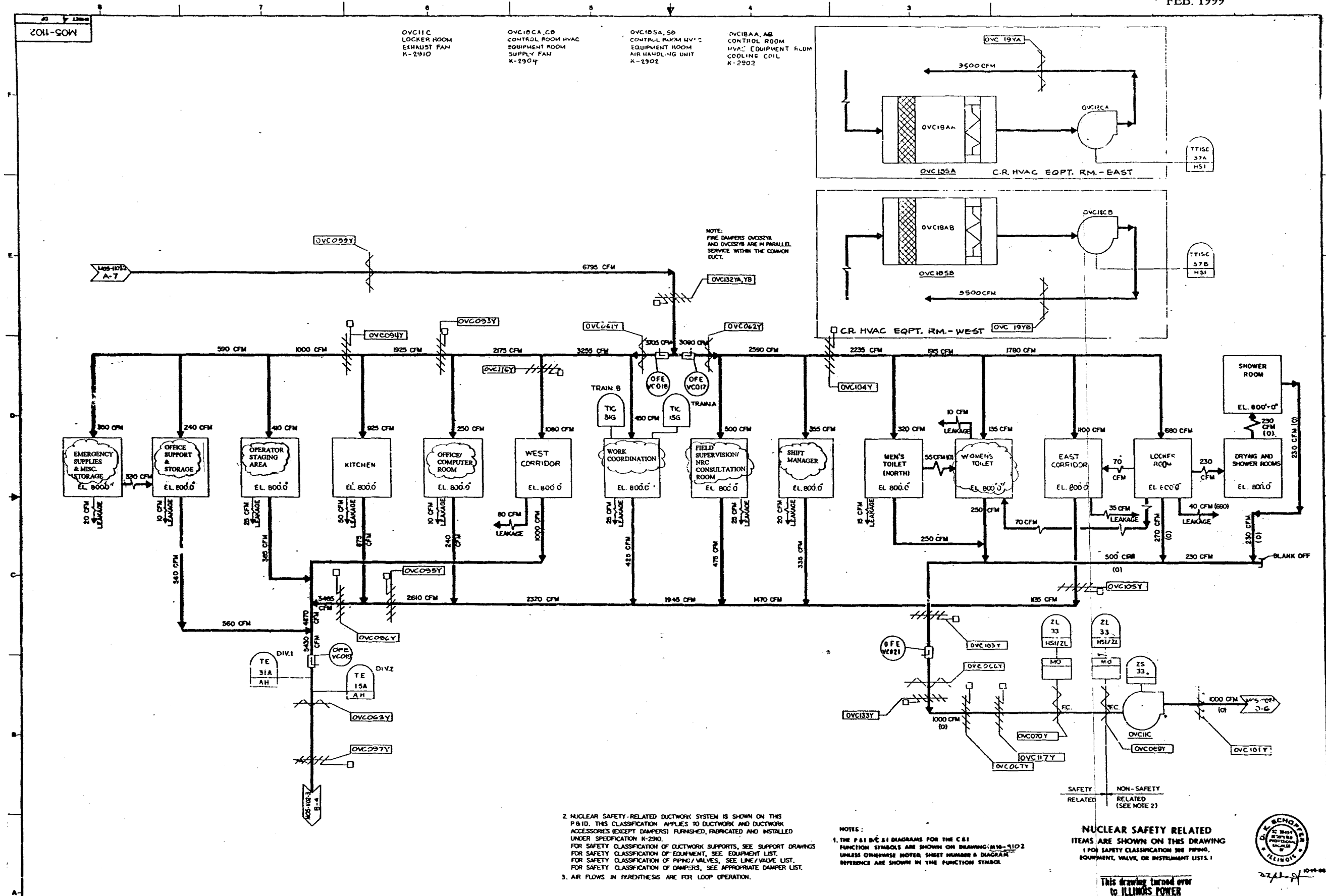
NUCLEAR SAFETY RELATED
ITEMS ARE SHOWN ON THIS DRAWING
(FOR SAFETY CLASSIFICATION SEE PIPING,
EQUIPMENT, VALVE, OR INSTRUMENT LISTS.)

This drawing turned over
to ILLINOIS POWER

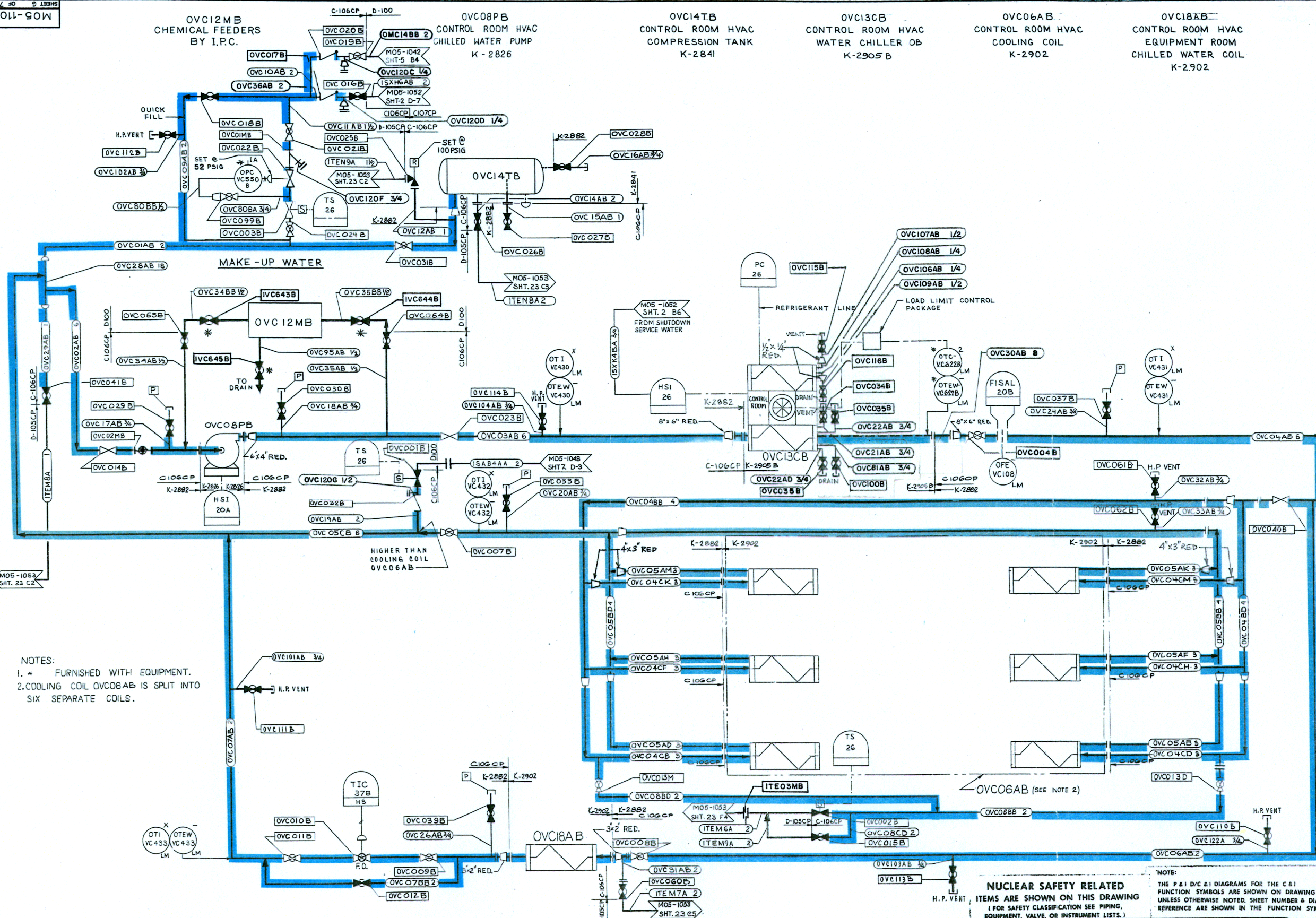
CLINTON POWER STATION
UPDATED SAFETY ANALYSIS REPORT

FIGURE 3.6-1
DIVISIONAL SEPARATION AND
HIGH-ENERGY P&ID'S-
CONTROL ROOM HVAC
SHEET 86 OF 111

SCANNED BY H.C.L. 10/2/95



MOS-1102

OVC12MB
CHEMICAL FEEDERS
BY I.P.C.OVC08PB
CONTROL ROOM HVAC
CHILLED WATER PUMP
K-2826OVC14TB
CONTROL ROOM HVAC
COMPRESSION TANK
K-2841OVC13CB
CONTROL ROOM HVAC
WATER CHILLER OB
K-2905BOVC06AB
CONTROL ROOM HVAC
COOLING COIL
K-2902OVC18AB
CONTROL ROOM HVAC
EQUIPMENT ROOM
CHILLED WATER COIL
K-2902

NOTES:

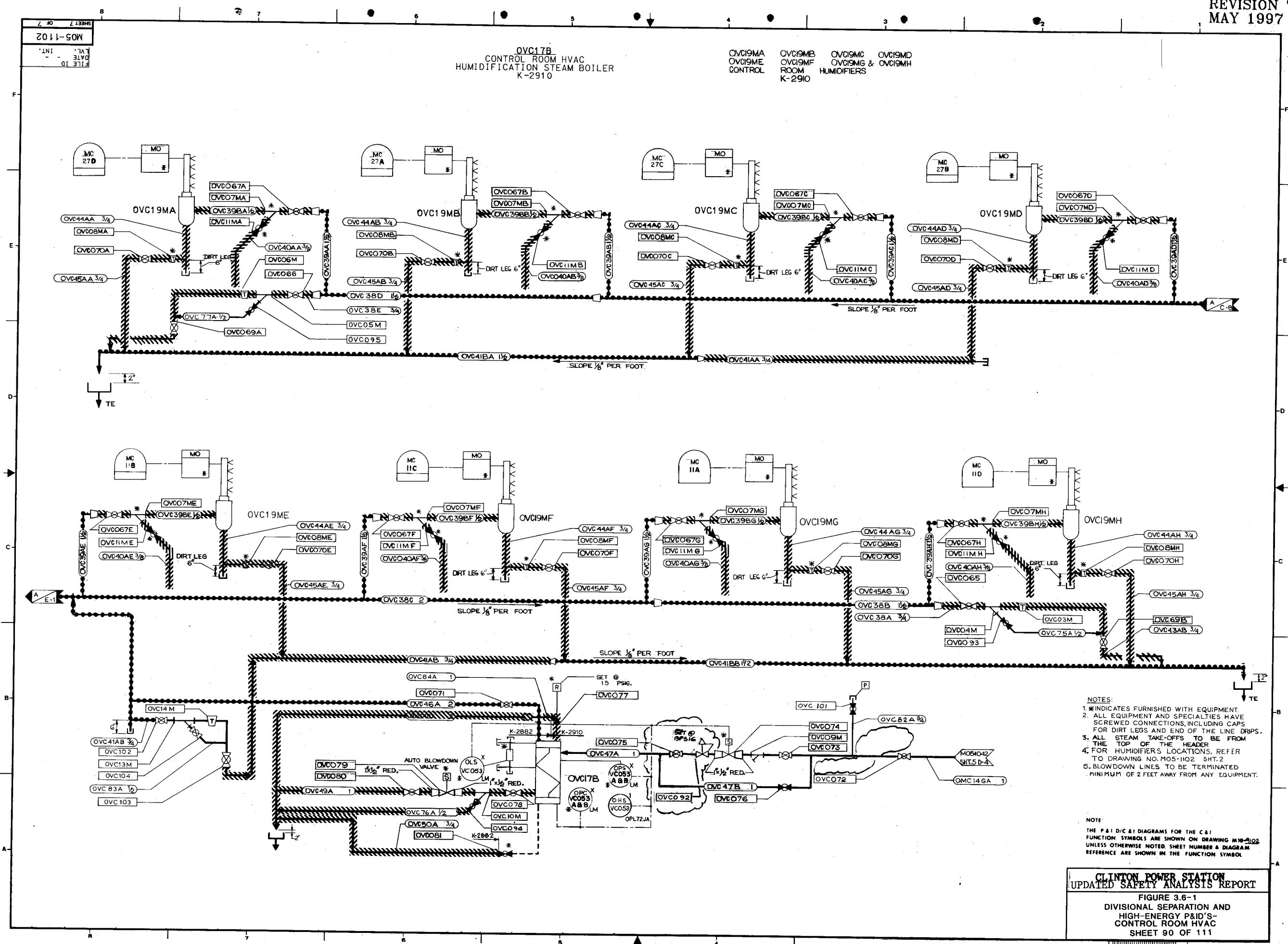
1. * FURNISHED WITH EQUIPMENT.
2. COOLING COIL OVC06AB IS SPLIT INTO SIX SEPARATE COILS.

NUCLEAR SAFETY RELATED
ITEMS ARE SHOWN ON THIS DRAWING
(FOR SAFETY CLASSIFICATION SEE PIPING,
EQUIPMENT, VALVE, OR INSTRUMENT LISTS.)

NOTE:
THE P&ID/C&I DIAGRAMS FOR THE C&I
FUNCTION SYMBOLS ARE SHOWN ON DRAWING M10-9102
UNLESS OTHERWISE NOTED, SHEET NUMBER & DIAGRAM
REFERENCE ARE SHOWN IN THE FUNCTION SYMBOL.

CLINTON POWER STATION
UPDATED SAFETY ANALYSIS REPORT

FIGURE 3.6-1
DIVISIONAL SEPARATION AND
HIGH-ENERGY P&ID'S-
CONTROL ROOM HVAC
SHEET 89 OF 111



8111-SOW
DATE
FILE TO

OVL13B
LABORATORY HUMIDIFICATION
STEAM BOILER
K-2910

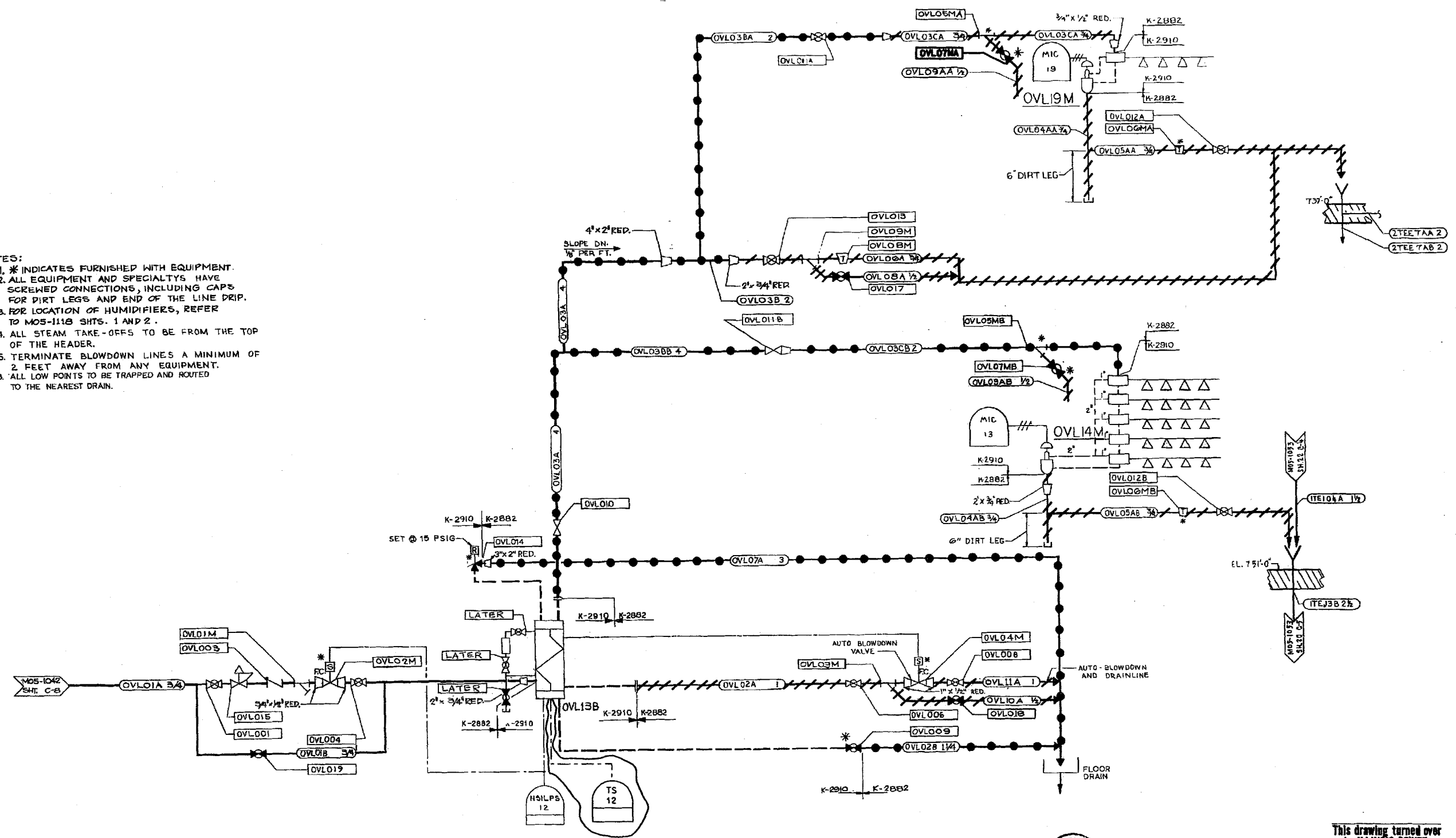
OVL14M
LABORATORY HUMIDIFIER
K-2910

OVL19M
COUNTING ROOM HUMIDIFIER
K-2910

REVISION 8
MARCH 1998

NOTES:

1. * INDICATES FURNISHED WITH EQUIPMENT.
2. ALL EQUIPMENT AND SPECIALTYS HAVE SCREWED CONNECTIONS, INCLUDING CAPS FOR DIRT LEGS AND END OF THE LINE DRIP.
3. FOR LOCATION OF HUMIDIFIERS, REFER TO MOS-1118 SHTS. 1 AND 2.
4. ALL STEAM TAKE-OFFS TO BE FROM THE TOP OF THE HEADER.
5. TERMINATE BLOWDOWN LINES A MINIMUM OF 2 FEET AWAY FROM ANY EQUIPMENT.
6. ALL LOW POINTS TO BE TRAPPED AND ROUTED TO THE NEAREST DRAIN.



NOTE:
THE P&ID/C&I DETAILS FOR THE C&I
FUNCTION SYMBOLS ARE SHOWN ON DRAWING M10-211/2
UNLESS OTHERWISE NOTED, SHEET NUMBER & DETAIL
REFERENCE ARE SHOWN IN THE FUNCTION SYMBOL.

CLINTON POWER STATION
UPDATED SAFETY ANALYSIS REPORT
FIGURE 3.6-1
DIVISIONAL SEPARATION AND
HIGH-ENERGY P&ID'S
LABORATORY AND COUNTING ROOM HVAC
SHEET 90A OF 111



FIGURE 3.6-1
DIVISIONAL SEPARATION AND
HIGH-ENERGY P&ID'S-
DIESEL GENERATOR ROOM VENTILATION
SHEET 91 OF 111

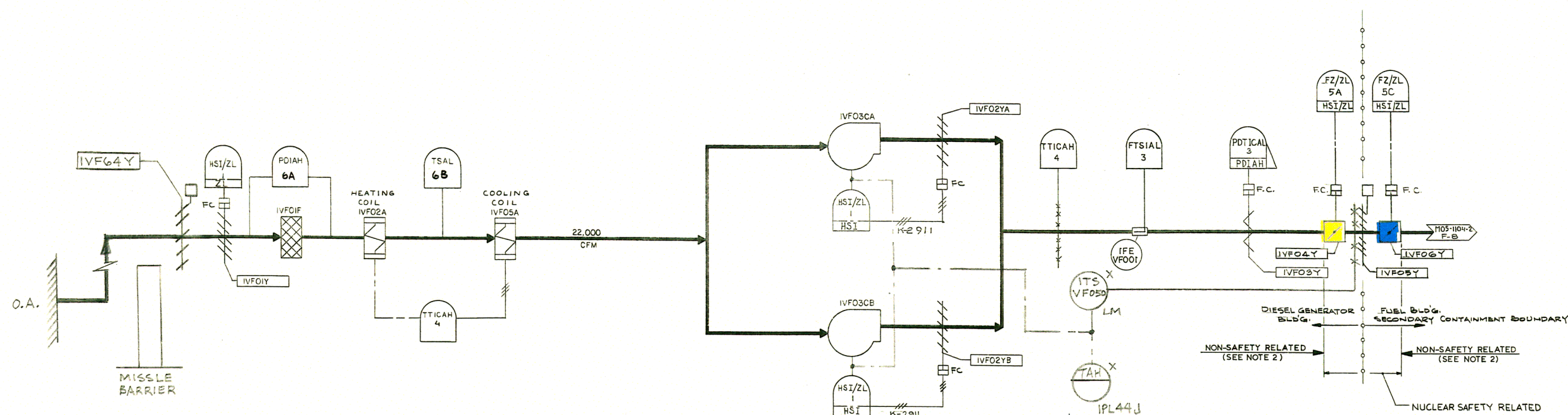
IVFO1F
FUEL BLDG. VENT.
SUPPLY AIR FILTER
K-2910

IVFO2A
FUEL BLDG. VENT.
SUPPLY AIR HTG. COIL
K-2908

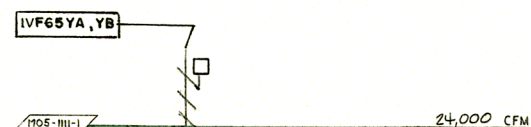
IVFO3CA,CB
FUEL BLDG. VENT.
SUPPLY AIR FANS 1A,1B
K-2904

IVFO4CA,CB
FUEL BLDG. VENT.
EXHAUS AIR FANS 1A,1B
K-2904

IVFO5A
FUEL BLDG. VENT.
SUPPLY AIR CLG. COIL
K-2906



NOTE: FIRE DAMPERS IVF65YA AND IVF65YB
ARE IN PARALLEL SERVICE WITHIN THE
COMMON DUCT.



- NOTES:
1. THE P&ID/C&I DIAGRAMS FOR THE C&I FUNCTION SYMBOLS ARE SHOWN ON DRAWING M10-1104 UNLESS OTHERWISE NOTED. SHEET NUMBER & DIAGRAM REFERENCE ARE SHOWN IN THE FUNCTION SYMBOL.
 2. NUCLEAR SAFETY-RELATED DUCTWORK SYSTEM IS SHOWN ON THIS P&ID. THIS CLASSIFICATION APPLIES TO DUCTWORK AND DUCTWORK ACCESSORIES (EXCEPT DAMPERS) FURNISHED, FABRICATED AND INSTALLED UNDER SPECIFICATION K-2910.
FOR SAFETY CLASSIFICATION OF DUCTWORK SUPPORTS, SEE SUPPORT DWG'S.
FOR SAFETY CLASSIFICATION OF EQUIPMENT, SEE EQUIPMENT LIST.
FOR SAFETY CLASSIFICATION OF PIPING/VALVES, SEE LINE/VALVE LIST.
FOR SAFETY CLASSIFICATION OF DAMPERS, SEE APPROPRIATE DAMPER LIST.

NUCLEAR SAFETY RELATED
ITEMS ARE SHOWN ON THIS DRAWING
(FOR SAFETY CLASSIFICATION SEE PIPING,
EQUIPMENT, VALVE, OR INSTRUMENT LISTS.)

CLINTON POWER STATION
UPDATED SAFETY ANALYSIS REPORT

FIGURE 3.6-1
DIVISIONAL SEPARATION AND
HIGH-ENERGY P&ID'S-
FUEL BUILDING HVAC
SHEET 92 OF 111

1011-SOW

OVGOISA & OVGOISB
STANDBY GAS TREATMENT SYSTEM
EQUIPMENT TRAINS A & B
K-2900

OVGO2CA & OVGO2CB
STANDBY GAS TREATMENT SYSTEM
FANS A & B
K-2900

OVGO3CA & OVGO3CB
STANDBY GAS TREATMENT SYSTEM
STANDBY COOLING AIR FANS A & B
K-2900

OVGO4AA & OVGO4AB
STANDBY GAS TREATMENT SYSTEM
ELECTRIC HEATERS A & B
K-2900

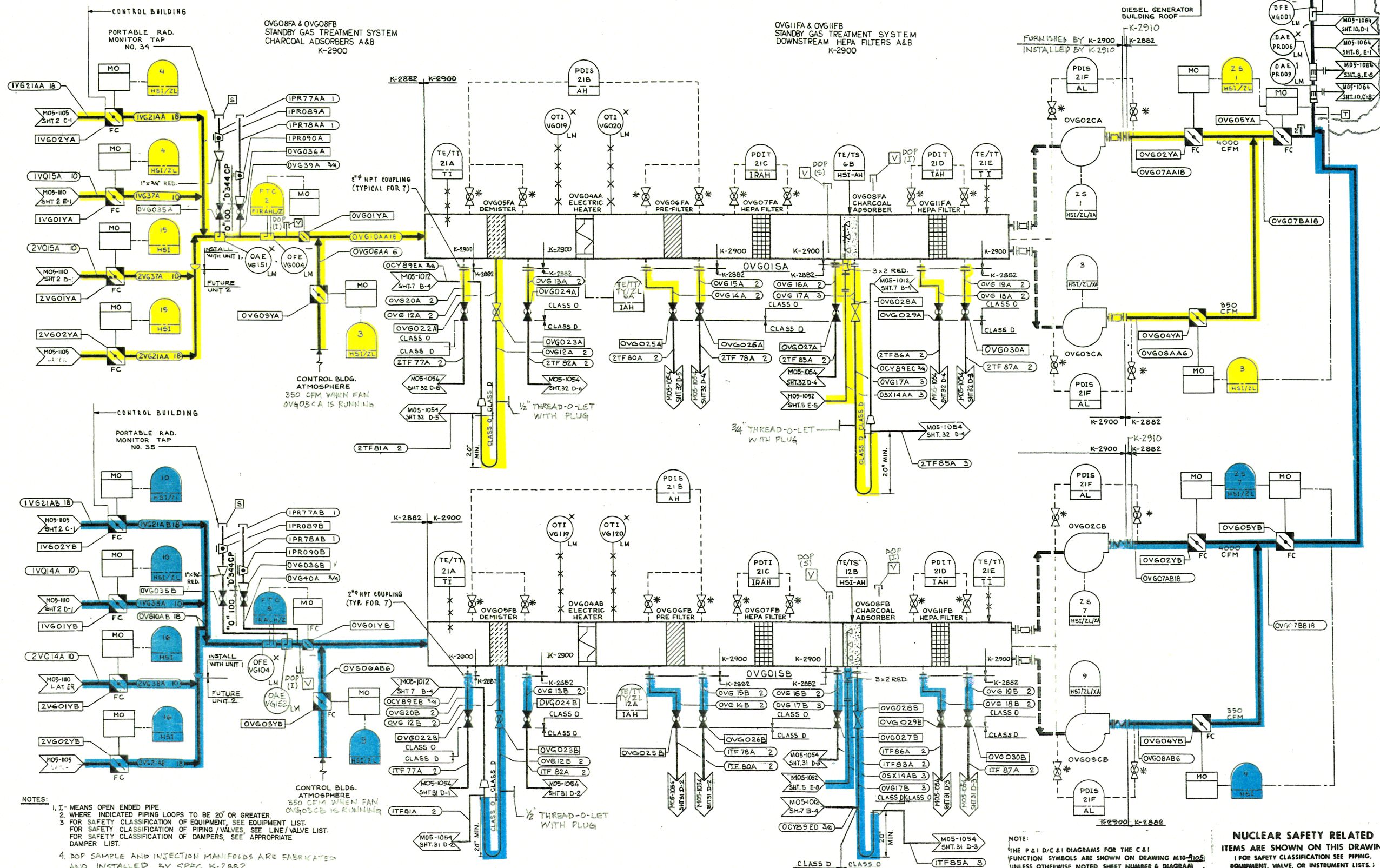
OVGO5FA & OVGO5FB
STANDBY GAS TREATMENT SYSTEM
DEMISTERS A & B
K-2900

OVGO6FA & OVGO6FB
STANDBY GAS TREATMENT SYSTEM
PRE-FILTERS A & B
K-2900

OVGO7FA & OVGO7FB
STANDBY GAS TREATMENT SYSTEM
UP STREAM HEPA FILTERS A & B
K-2900

COMMON
STATION VENT
DIESEL GENERATOR
BUILDING ROOF

OVGO9A 18
FT-UITX
2.5



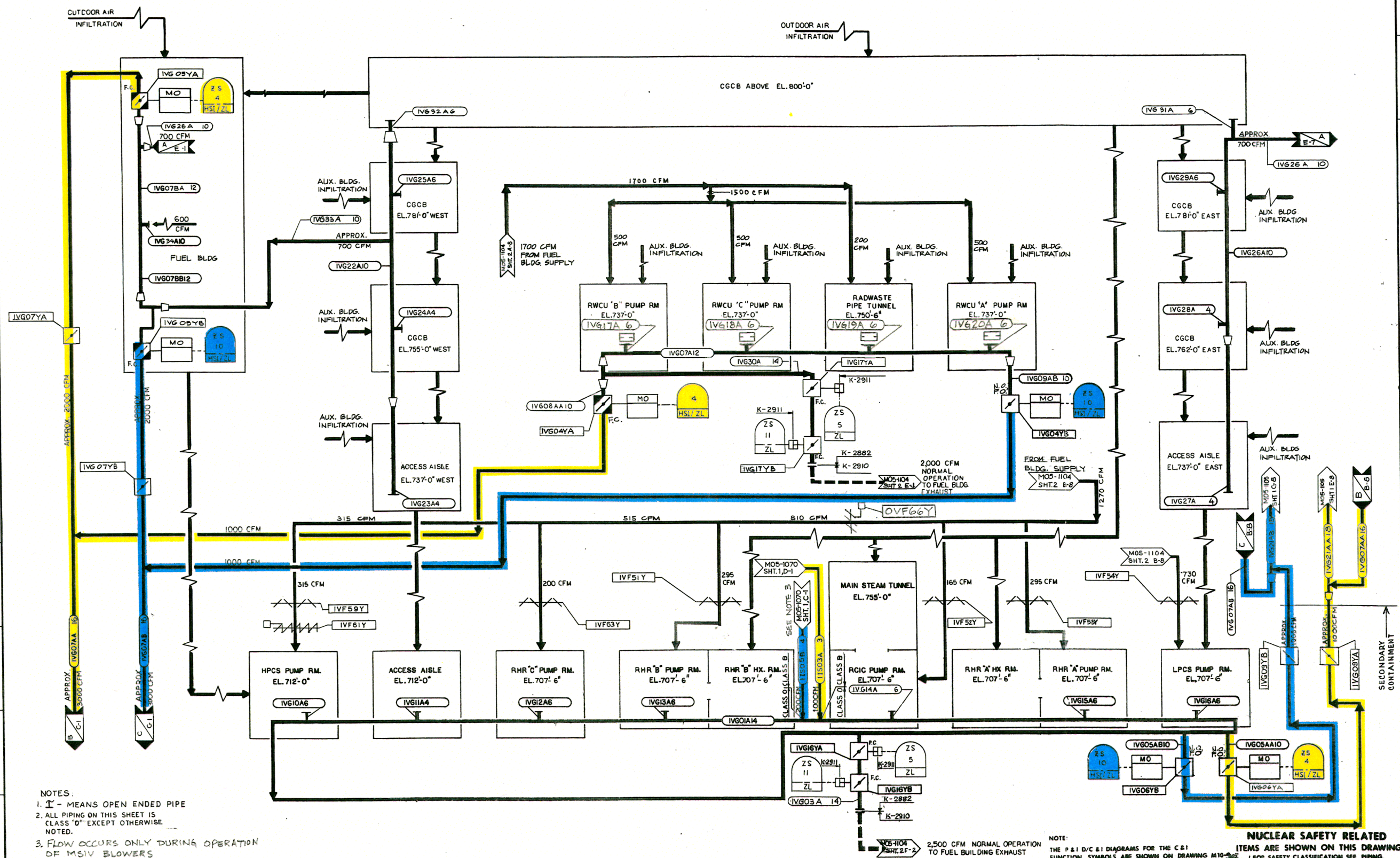
NOTES:
1. I - MEANS OPEN ENDED PIPE
2. WHERE INDICATED PIPING LOOPS TO BE 20' OR GREATER.
3. FOR SAFETY CLASSIFICATION OF EQUIPMENT, SEE EQUIPMENT LIST.
FOR SAFETY CLASSIFICATION OF PIPING/VALVES, SEE LINE/VALVE LIST.
FOR SAFETY CLASSIFICATION OF DAMPERS, SEE APPROPRIATE DAMPER LIST.
4. DOP SAMPLE AND INJECTION MANIFOLDS ARE FABRICATED AND INSTALLED BY SPEC K-2882.

NOTE:
THE P&ID/C&I DIAGRAMS FOR THE C&I
FUNCTION SYMBOLS ARE SHOWN ON DRAWING M10-105
UNLESS OTHERWISE NOTED, SHEET NUMBER & DIAGRAM
REFERENCE ARE SHOWN IN THE FUNCTION SYMBOLS.

**NUCLEAR SAFETY RELATED
ITEMS ARE SHOWN ON THIS DRAWING
(FOR SAFETY CLASSIFICATION SEE PIPING,
EQUIPMENT, VALVE, OR INSTRUMENT LISTS.)**

**CLINTON POWER STATION
UPDATED SAFETY ANALYSIS REPORT**

**FIGURE 3.6-1
DIVISIONAL SEPARATION AND
HIGH-ENERGY P&ID'S
STANDBY GAS TREATMENT SYSTEM
SHEET 93 OF 111**

SHEET
9011-90W

- NOTES:
1. I - MEANS OPEN ENDED PIPE
 2. ALL PIPING ON THIS SHEET IS CLASS "D" EXCEPT OTHERWISE NOTED.
 3. FLOW OCCURS ONLY DURING OPERATION OF MSIV BLOWERS

NOTE:
THE P&ID/C&I DIAGRAMS FOR THE C&I FUNCTION SYMBOLS ARE SHOWN ON DRAWING M10-102. UNLESS OTHERWISE NOTED, SHEET NUMBER & DIAGRAM REFERENCE ARE SHOWN IN THE FUNCTION SYMBOL.

NUCLEAR SAFETY RELATED ITEMS ARE SHOWN ON THIS DRAWING
(FOR SAFETY CLASSIFICATION SEE PIPING, EQUIPMENT, VALVE, OR INSTRUMENT LISTS.)

CLINTON POWER STATION
UPDATED SAFETY ANALYSIS REPORT

FIGURE 3.6-1
DIVISIONAL SEPARATION AND
HIGH-ENERGY P&ID'S-
STANDBY GAS TREATMENT SYSTEM
SHEET 94 OF 111