

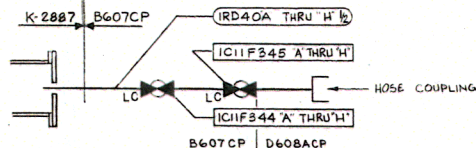
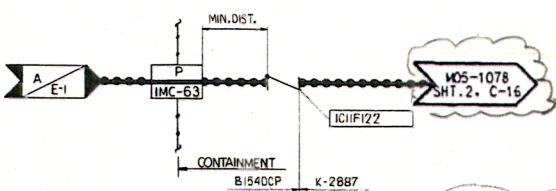
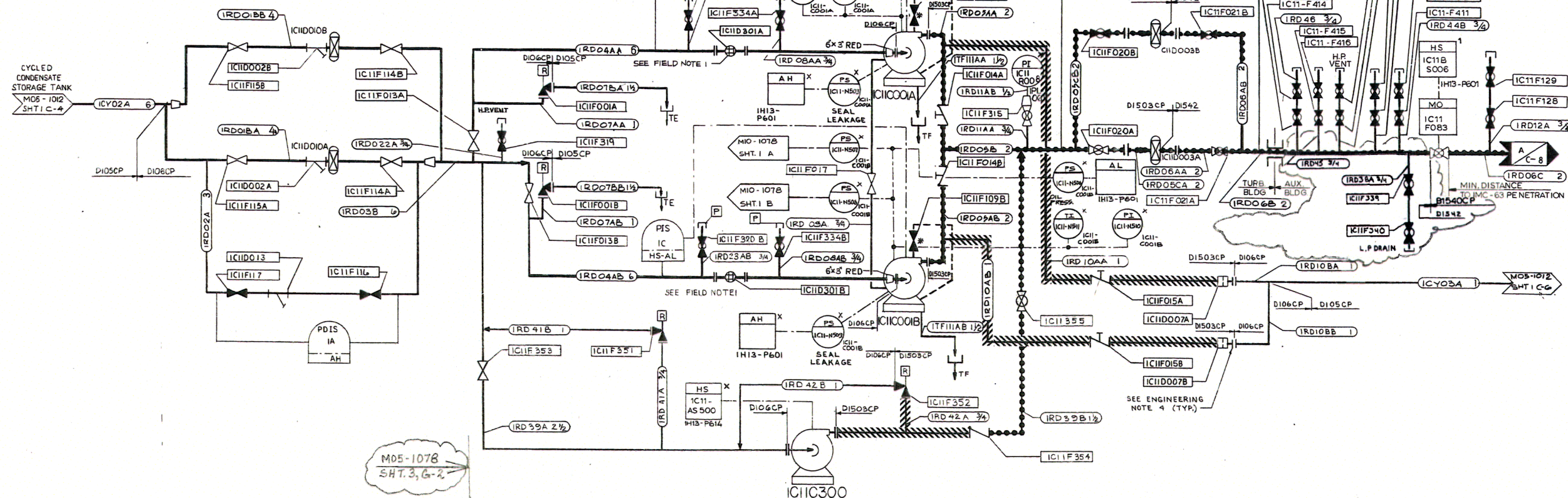
8701-GOW

IC110010A & IC110010B
PUMP SUCTION FILTER
K-2801

IC110001A & IC110001B
DRIVE WATER PUMP
K-2801

IC11C300
RECIRCULATION PUMP
SEAL INJECTION PUMP
K-2882

IC110003A & IC110003B
DRIVE WATER FILTER
K-2801



TYPICAL DETAIL SCRAM DISCHARGE
VOLUME FLUSH

FIELD NOTES:

1. TEMPORARY IN-LINE STRAINER (CONICAL TYPE)
AS SHOWN INSTALLED DURING PRE-OR AND
INITIAL START-UP TESTING ONLY. REMOVE FOR
NORMAL PLANT OPERATION.

ENGINEERING NOTES:

1. ALL PRESSURE RELIEF VALVES SHALL BE
REMOVABLE FOR TESTING.
2. MINIMAL DISTANCE MEANS THAT THE PIPING
DESIGNER SHOULD HOLD THE INDICATED
DISTANCE TO BE AS MINIMAL AS PRACTICALLY
POSSIBLE.
3. * MARKED ITEM IS FURNISHED WITH
ASSOCIATED EQUIPMENT
4. USE MATCHING FLANGES IN ACCORDANCE
WITH DIS03CP.

RELIEF VALVE DATA

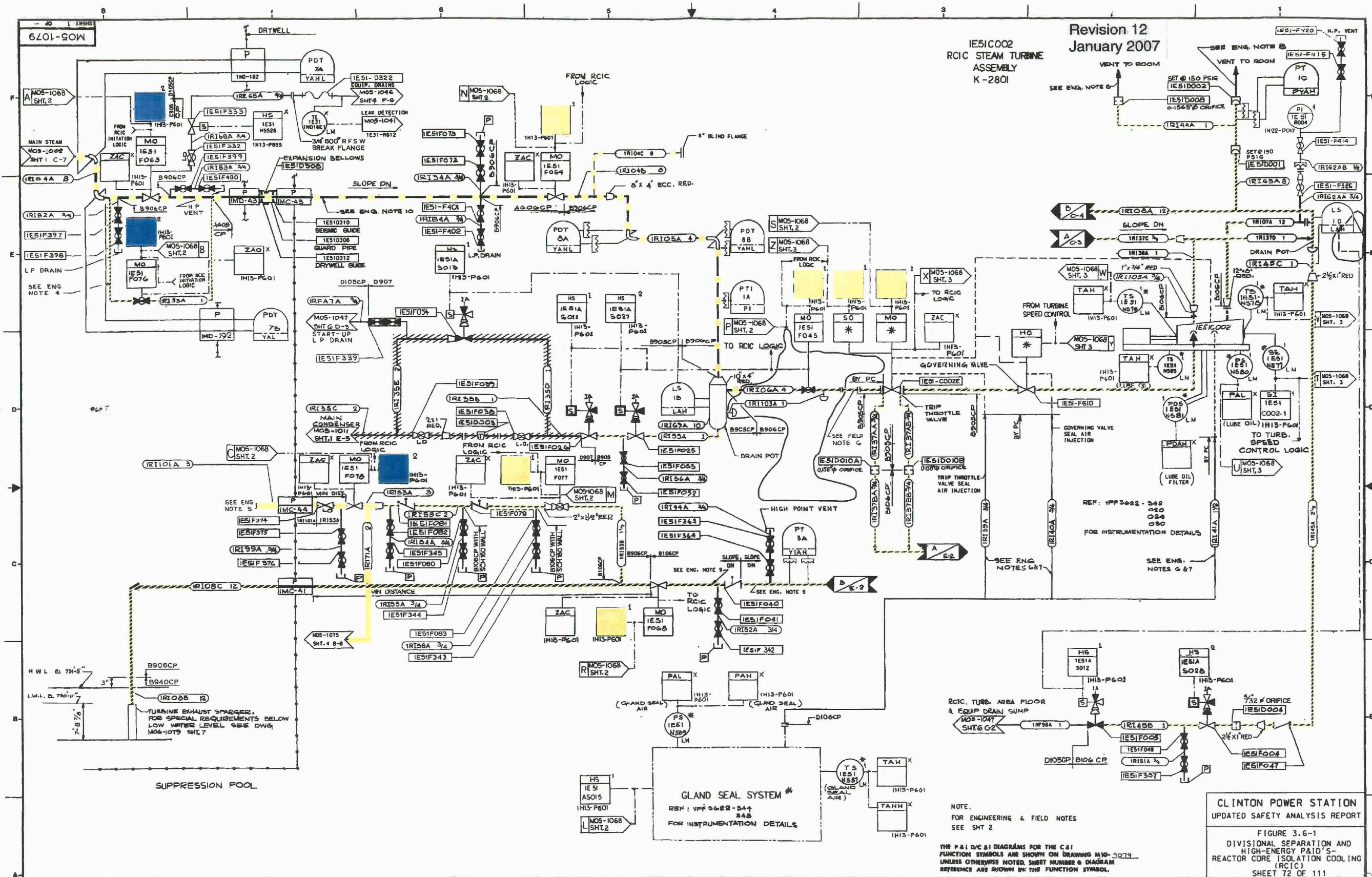
VALVE NUMBER	MAKE & TYPE	SIZE	VALVE SET PRESSURE	CAPACITY
IC11F001A	DRESSER-1-1970-2 (3-1-1-2) XFA30-NC3007	1" x 1/2"	150 PSIG	37 GPM
IC11F001B	DRESSER-1-1970-2 (3-1-1-2) XFA30-NC3007	1" x 1/2"	150 PSIG	37 GPM
IC11F025A	CROSBY-JR-WR-S	3/4" x 3/4"	1250 PSIG	10 GPM
IC11F025B	CROSBY-JR-WR-S	3/4" x 3/4"	1250 PSIG	10 GPM
IC11F351	DRESSER	3/4" x 1"	150 PSIG	10 GPM
IC11F352	DRESSER	3/4" x 1"	1790 PSIG	15 GPM

NUCLEAR SAFETY RELATED
ITEMS ARE SHOWN ON THIS DRAWING
(FOR SAFETY CLASSIFICATION SEE PIPING,
EQUIPMENT, VALVE, OR INSTRUMENT LISTS.)

NOTE:
THE P&ID/C&I DIAGRAMS FOR THE C&I
FUNCTION SYMBOLS ARE SHOWN ON DRAWING M10-2078
UNLESS OTHERWISE NOTED, SHEET NUMBER & DIAGRAM
REFERENCE ARE SHOWN IN THE FUNCTION SYMBOL.

CLINTON POWER STATION
UPDATED SAFETY ANALYSIS REPORT

FIGURE 3.6-1
DIVISIONAL SEPARATION AND
HIGH-ENERGY P&ID'S
CONTROL ROD DRIVES
SHEET 71 OF 111



Revision 12
January 2007

IES1C002
RCIC STEAM TURBINE
ASSEMBLY
K-2801

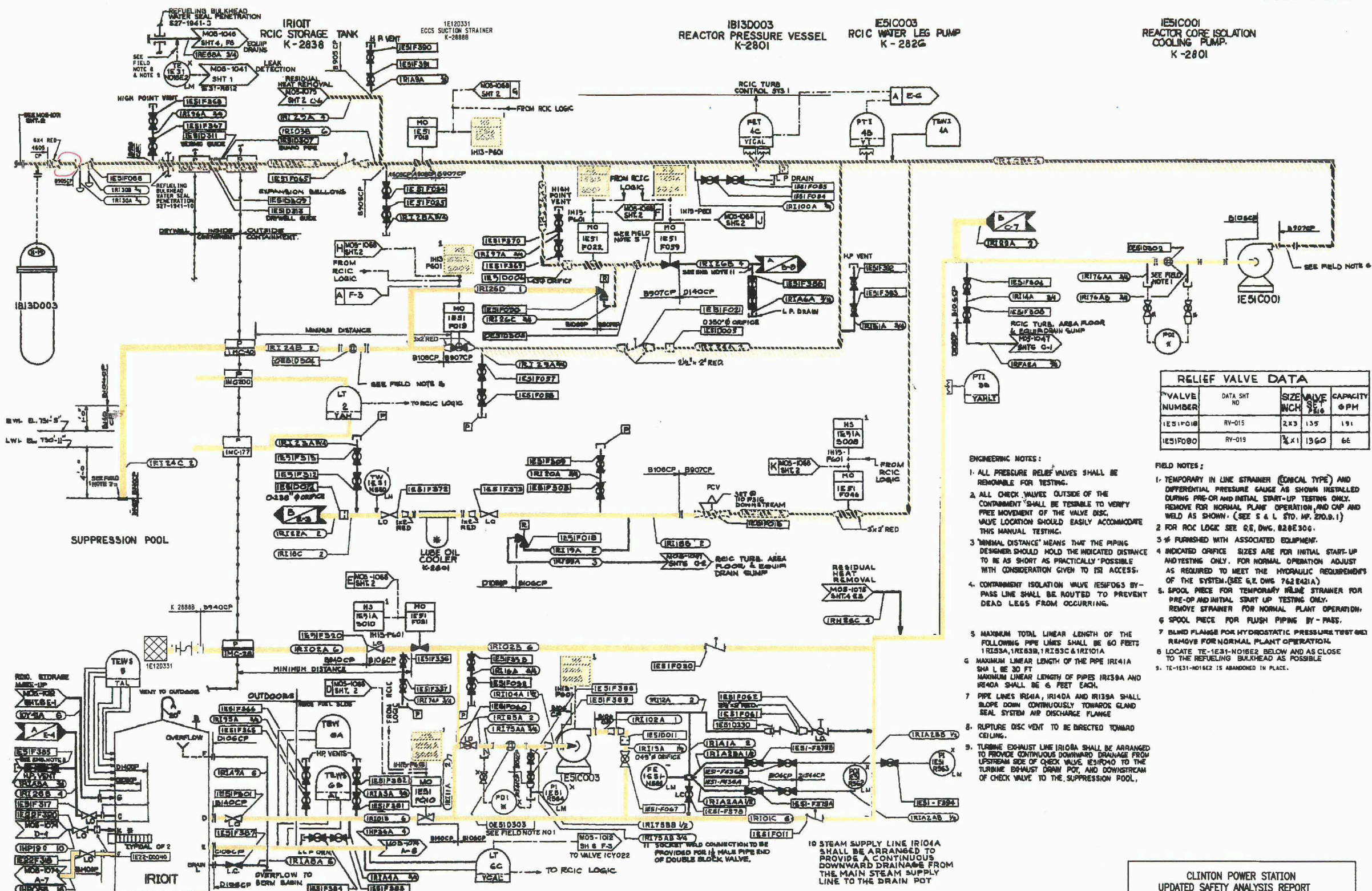
CLINTON POWER STATION
UPDATED SAFETY ANALYSIS REPORT

FIGURE 3.6-1
DIVISIONAL SEPARATION AND
HIGH-ENERGY P&ID'S-
REACTOR CORE ISOLATION COOLING
(RCIC)
SHEET 72 OF 111

NOTE:
FOR ENGINEERING & FIELD NOTES
SEE SHT 2

THE P&ID'S & DIAGRAMS FOR THE C&I
FUNCTION SYMBOLS ARE SHOWN ON DRAWING M10-3079
UNLESS OTHERWISE NOTED, SHEET NUMBER & DIAGRAM
REFERENCE ARE SHOWN IN THE FUNCTION SYMBOL.

REVISION 12
JANUARY 2007

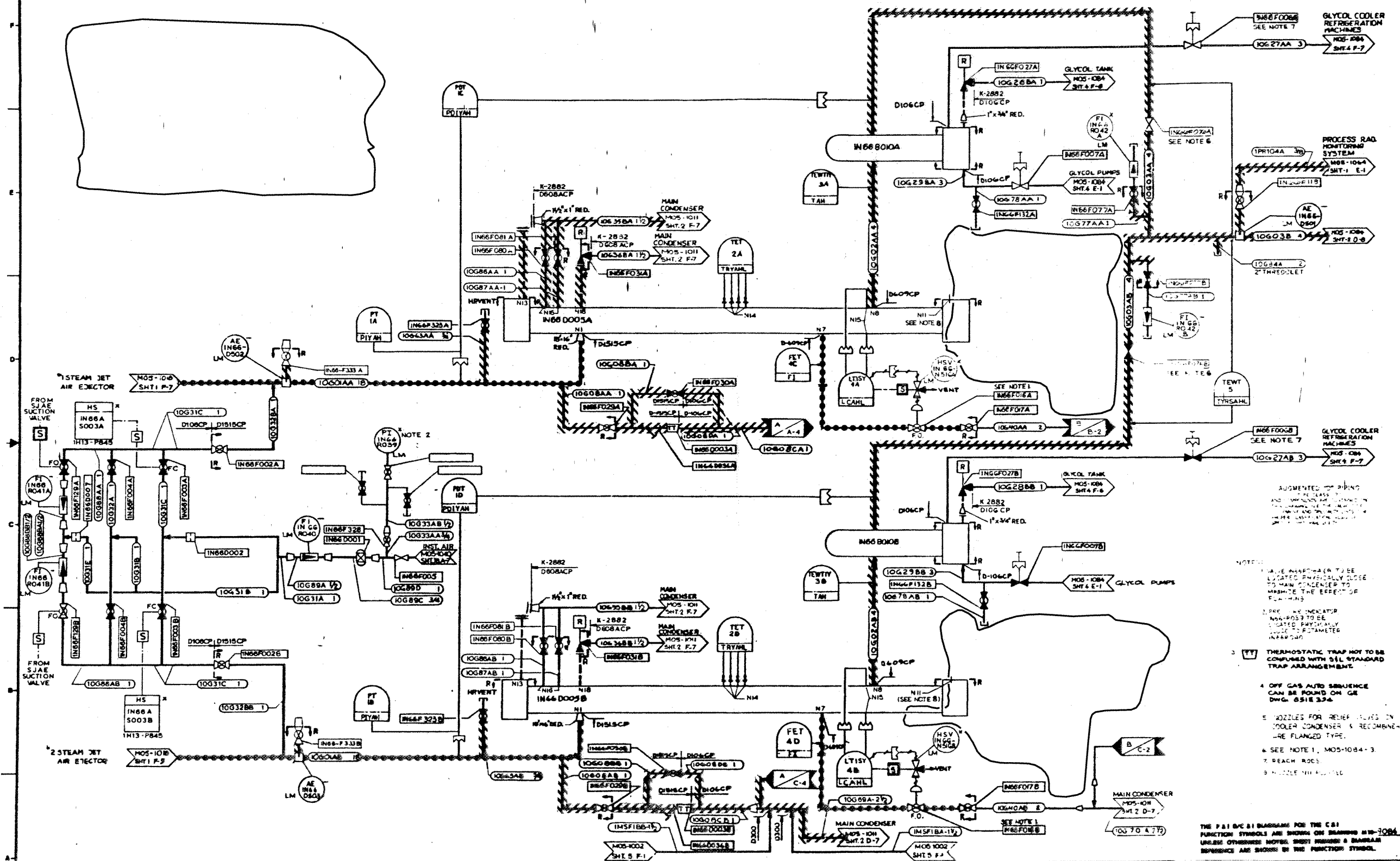


MOS-108A

IN660005A & IN660005B
RECOMBINERS
K-2801

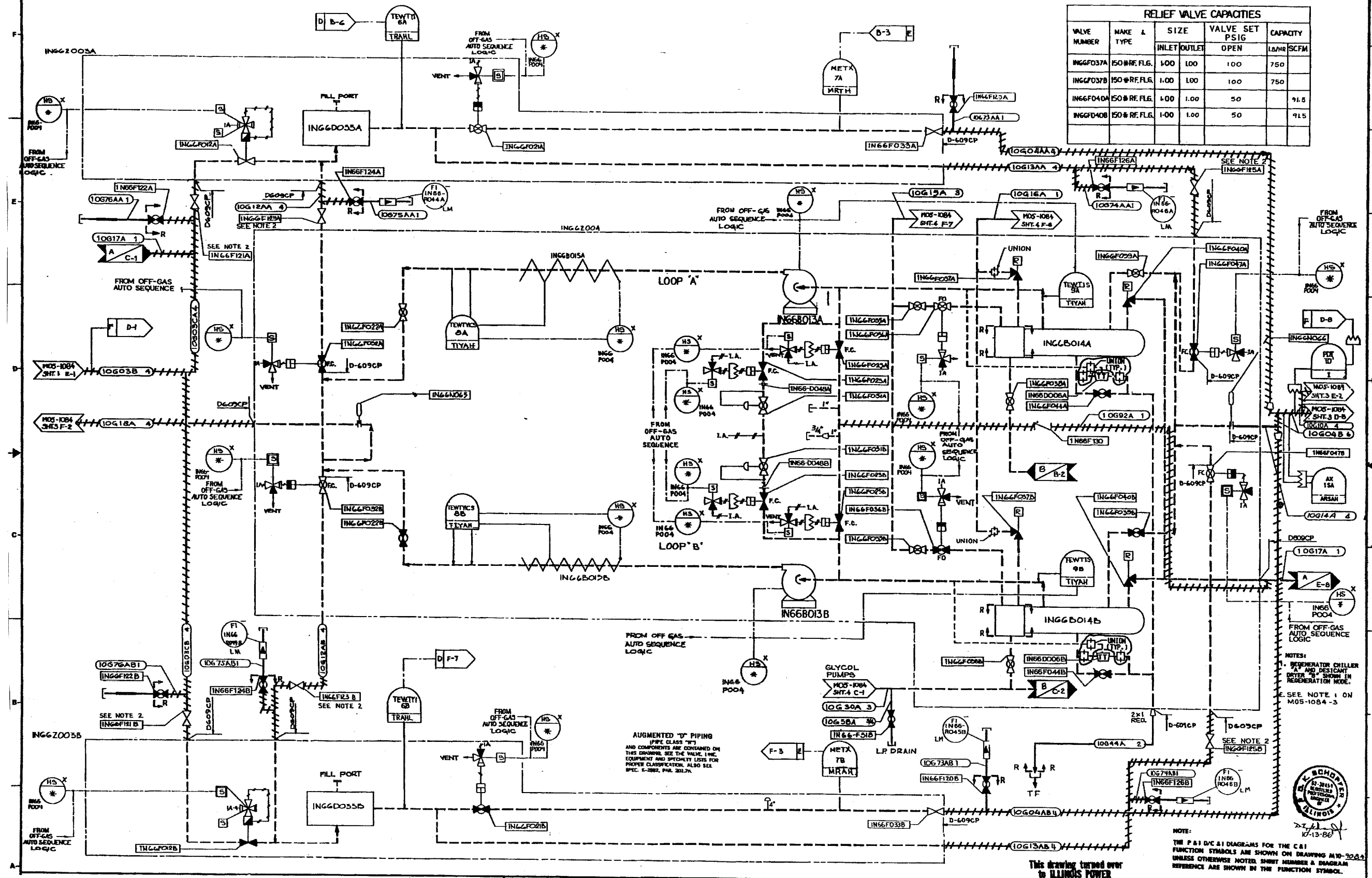
IN668010A & IN668010B
COOLER CONDENSERS 1A & 1B
K-2801

REVISION 12
JANUARY 2007



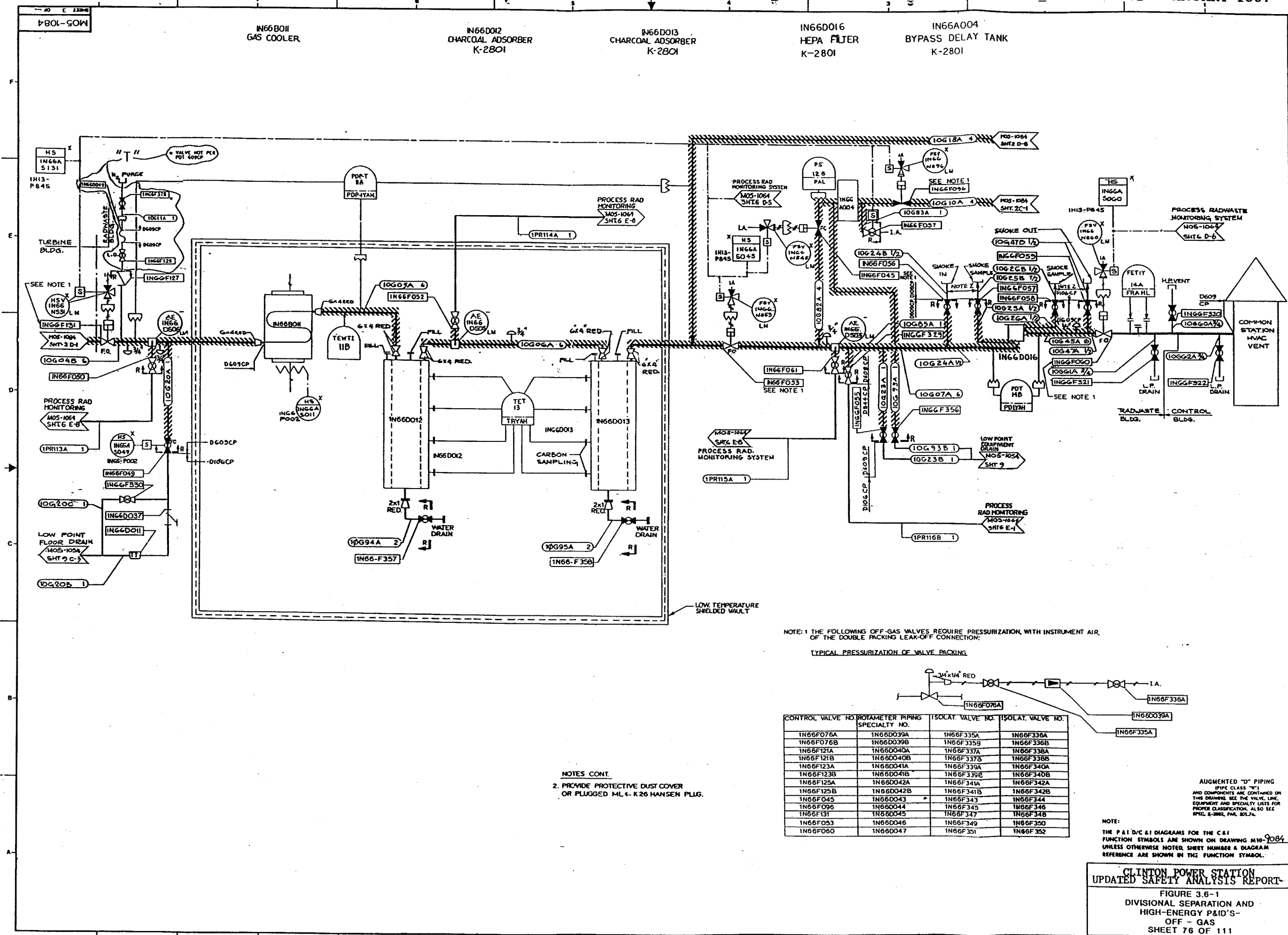
CLINTON POWER STATION
UPDATED SAFETY ANALYSIS REPORT
FIGURE 3.6-1
DIVISIONAL SEPARATION AND
HIGH-ENERGY P&ID'S-
OFF - GAS
SHEET 74 OF 111

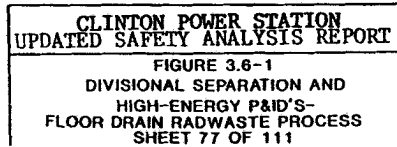
VALVE NUMBER	MAKE & TYPE	SIZE		VALVE SET PSIG	CAPACITY	
		INLET	OUTLET	OPEN	LB/HR	SCFM
ING6FD37A	ISO # RF. FLG.	1.00	1.00	100	750	
ING6FD37B	ISO # RF. FLG.	1.00	1.00	100	750	
ING6FD10A	ISO # RF. FLG.	1.00	1.00	50		91.5
ING6FD10B	ISO # RF. FLG.	1.00	1.00	50		91.5

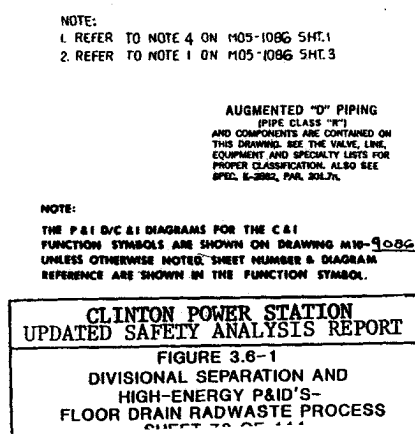


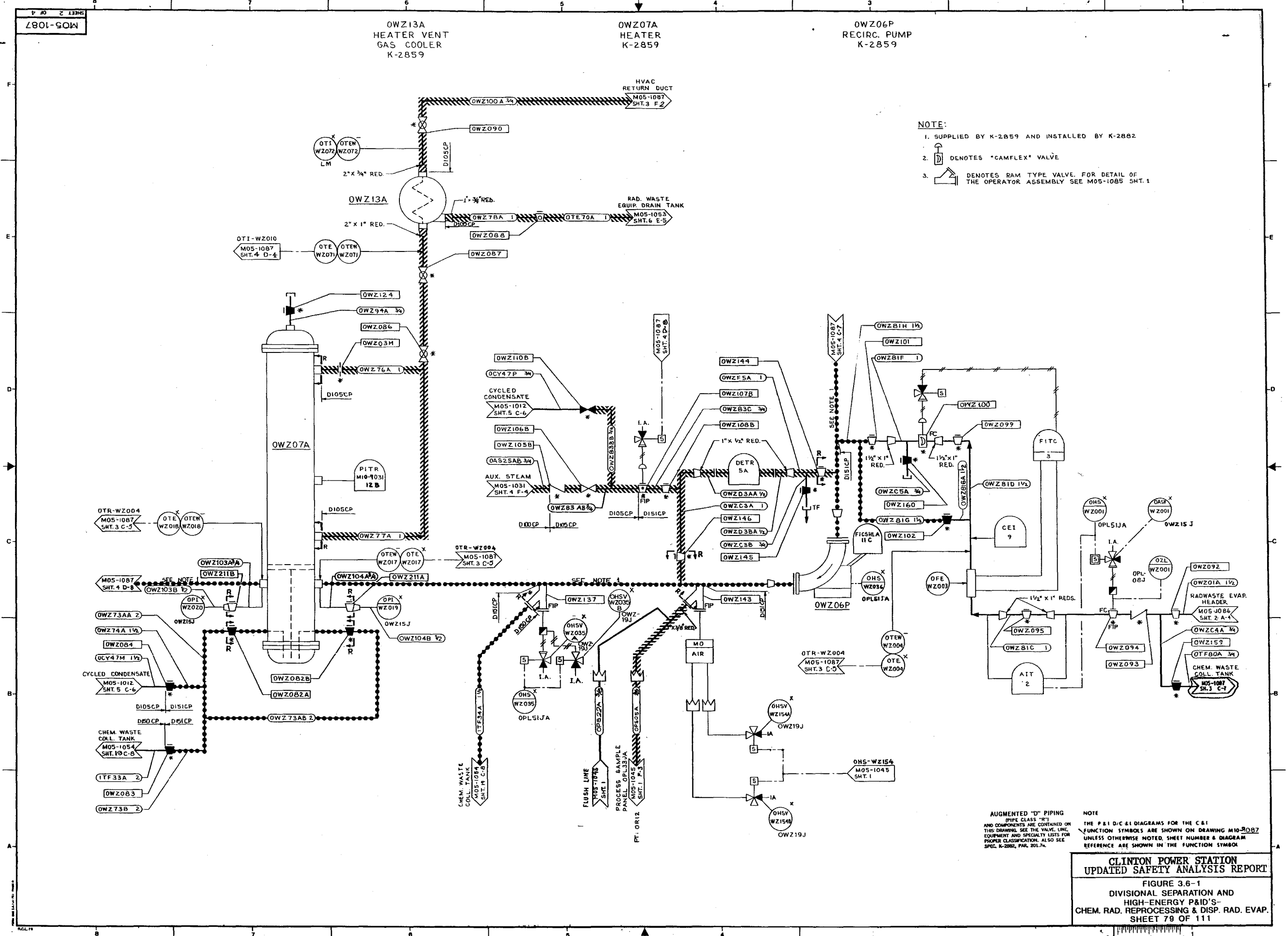
NOTE: *27 July*
17-13-86

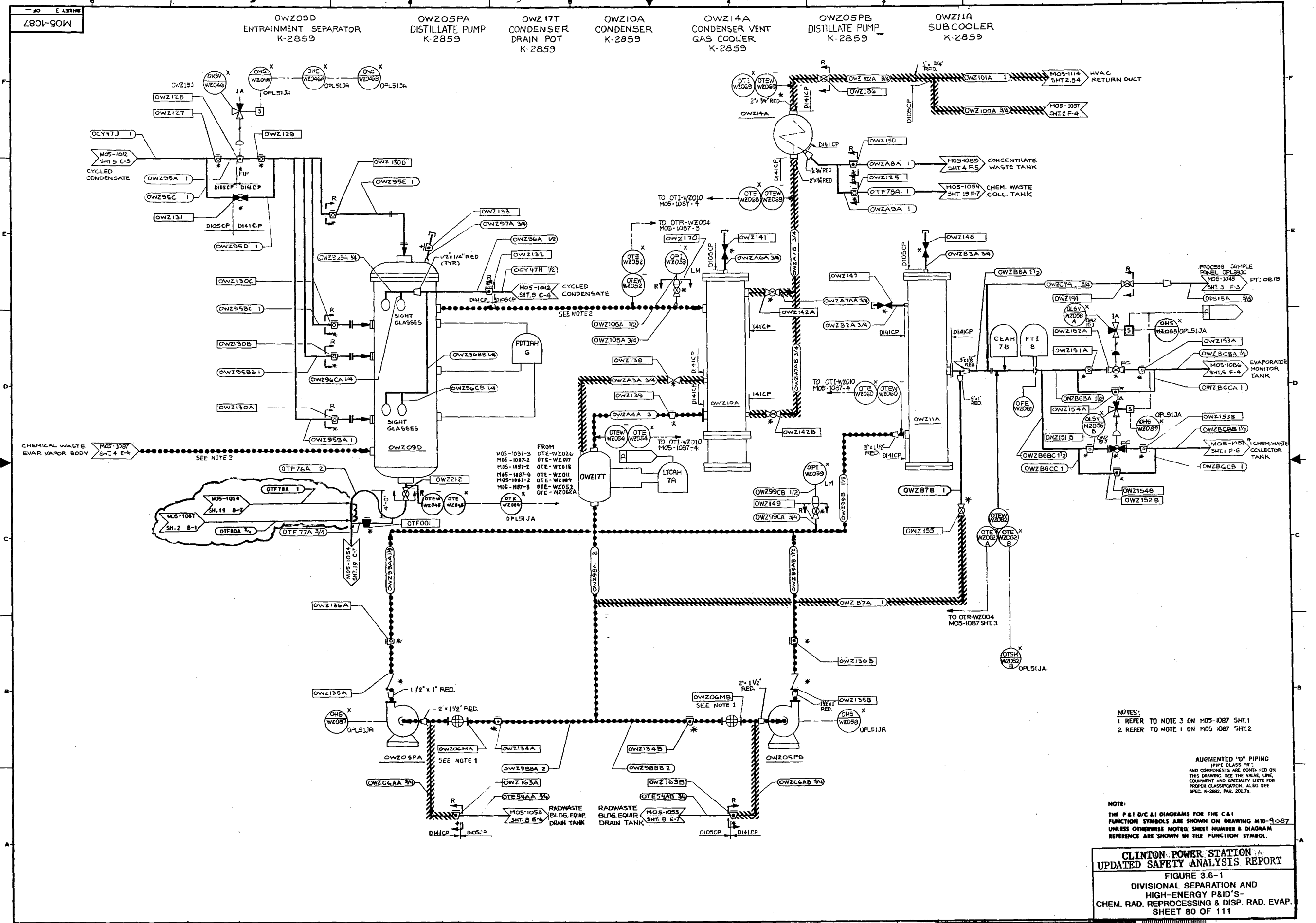
THE P&ID/C&I DIAGRAMS FOR THE C&I
FUNCTION SYMBOLS ARE SHOWN ON DRAWING MTD-9054
UNLESS OTHERWISE NOTED. SHEET NUMBER & DIAGRAM
REFERENCE ARE SHOWN IN THE FUNCTION SYMBOL.

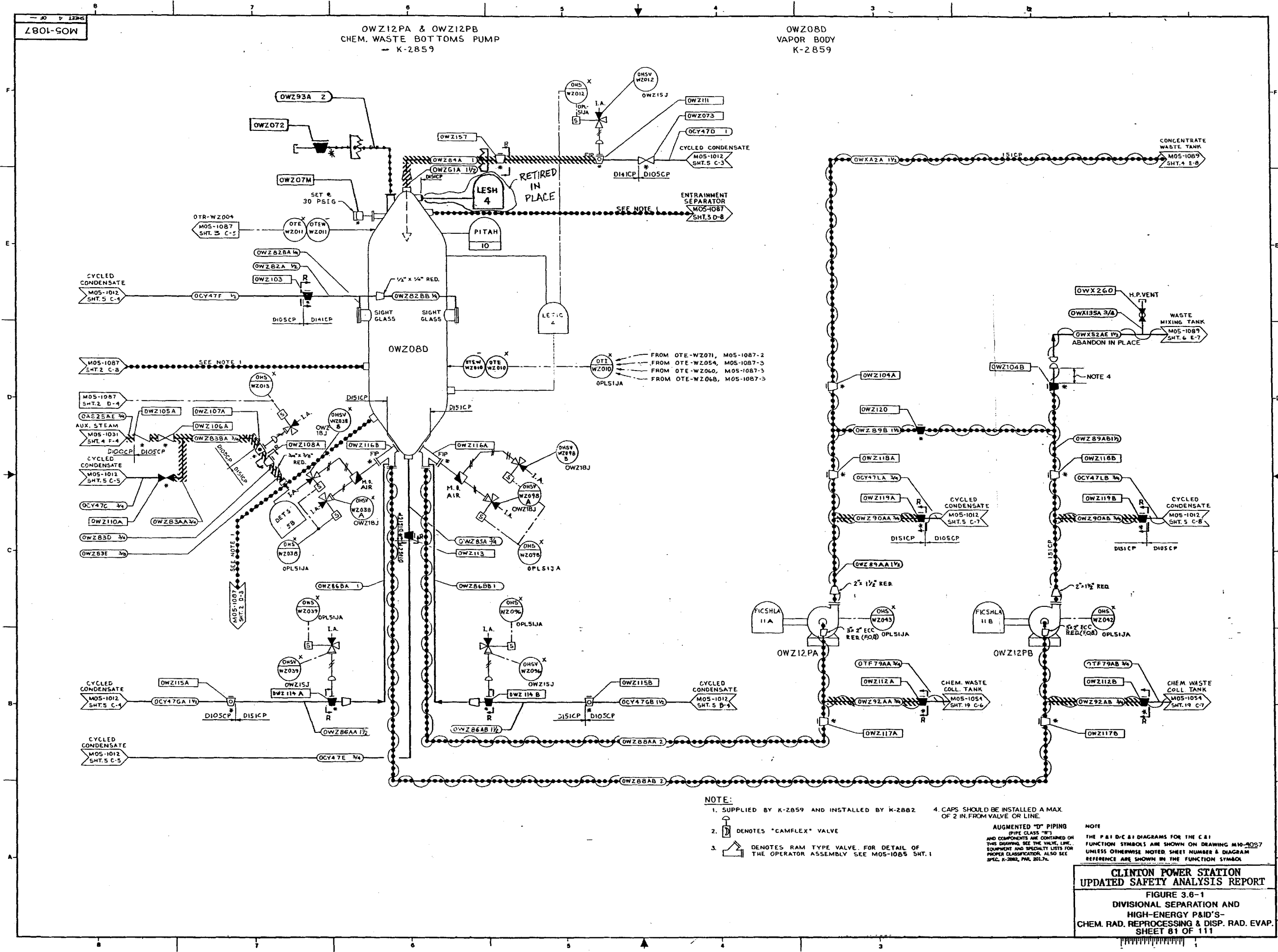


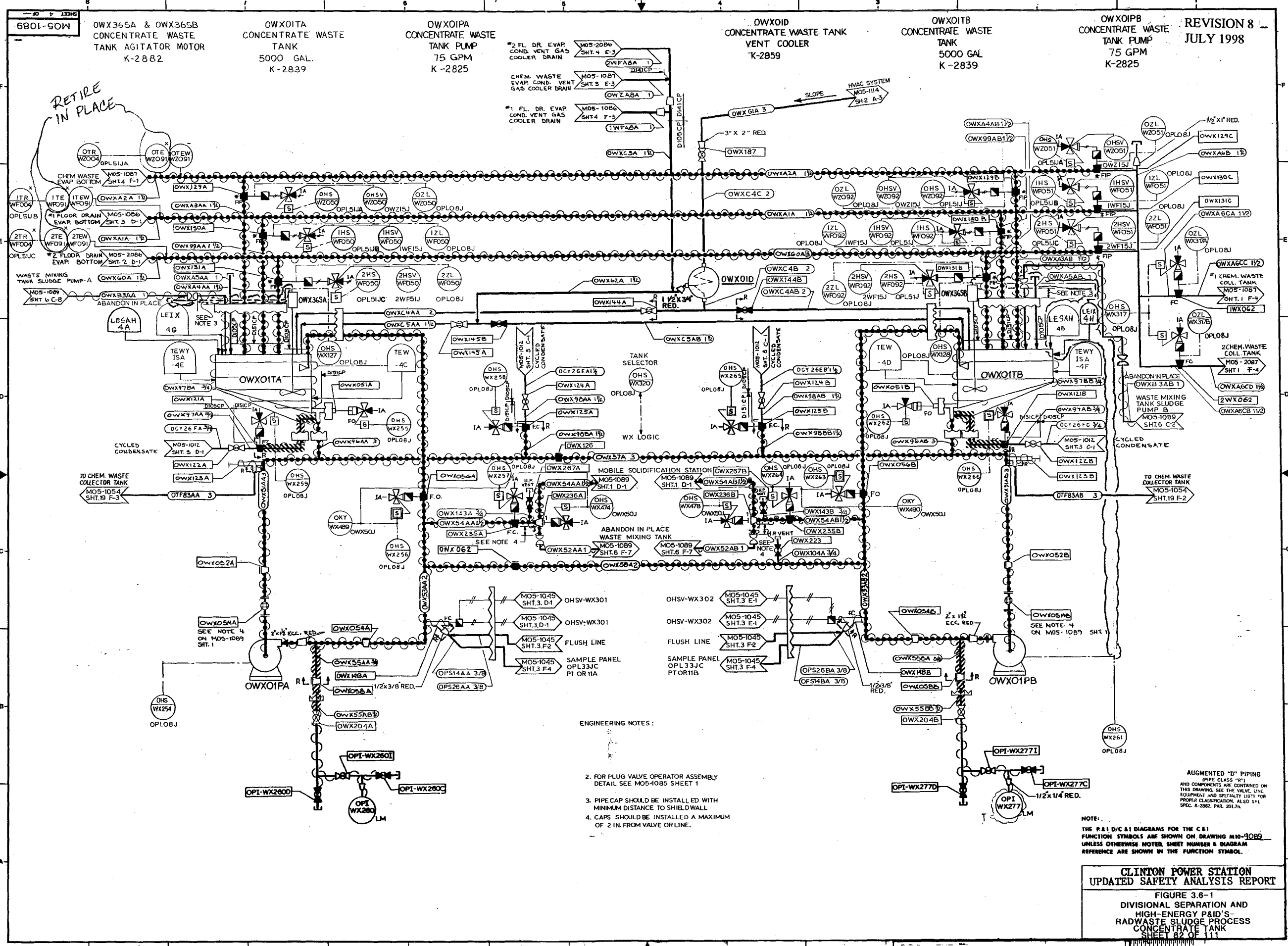












REVISION 8
JULY 1998

ENGINEERING NOTES:

- 2. FOR PLUG VALVE OPERATOR ASSEMBLY
DETAIL SEE MOS-1085 SHEET 1
- 3. PIPE CAP SHOULD BE INSTALLED WITH
MINIMUM DISTANCE TO SHIELD WALL
- 4. CAPS SHOULD BE INSTALLED A MAXIMUM
OF 2 IN. FROM VALVE OR LINE.

AUGMENTED "D" PIPING
(PIPE CLASS "R")
AND COMPONENTS ARE CONTAINED ON
THIS DRAWING. SEE THE VALVE, LINE,
EQUIPMENT AND SPECIALTY LISTS FOR
PROPER CLASSIFICATION. ALSO SEE
SPEC. K-2882, PAR. 201.7A.

NOTE:
THE P&ID/C&I DIAGRAMS FOR THE C&I
FUNCTION SYMBOLS ARE SHOWN ON DRAWING MOS-1089
UNLESS OTHERWISE NOTED, SHEET NUMBER & DIAGRAM
REFERENCE ARE SHOWN IN THE FUNCTION SYMBOL.

CLINTON POWER STATION
UPDATED SAFETY ANALYSIS REPORT

FIGURE 3.6-1
DIVISIONAL SEPARATION AND
HIGH-ENERGY P&ID'S
RADWASTE SLUDGE PROCESS
CONCENTRATE TANK
SHEET 82 OF 111