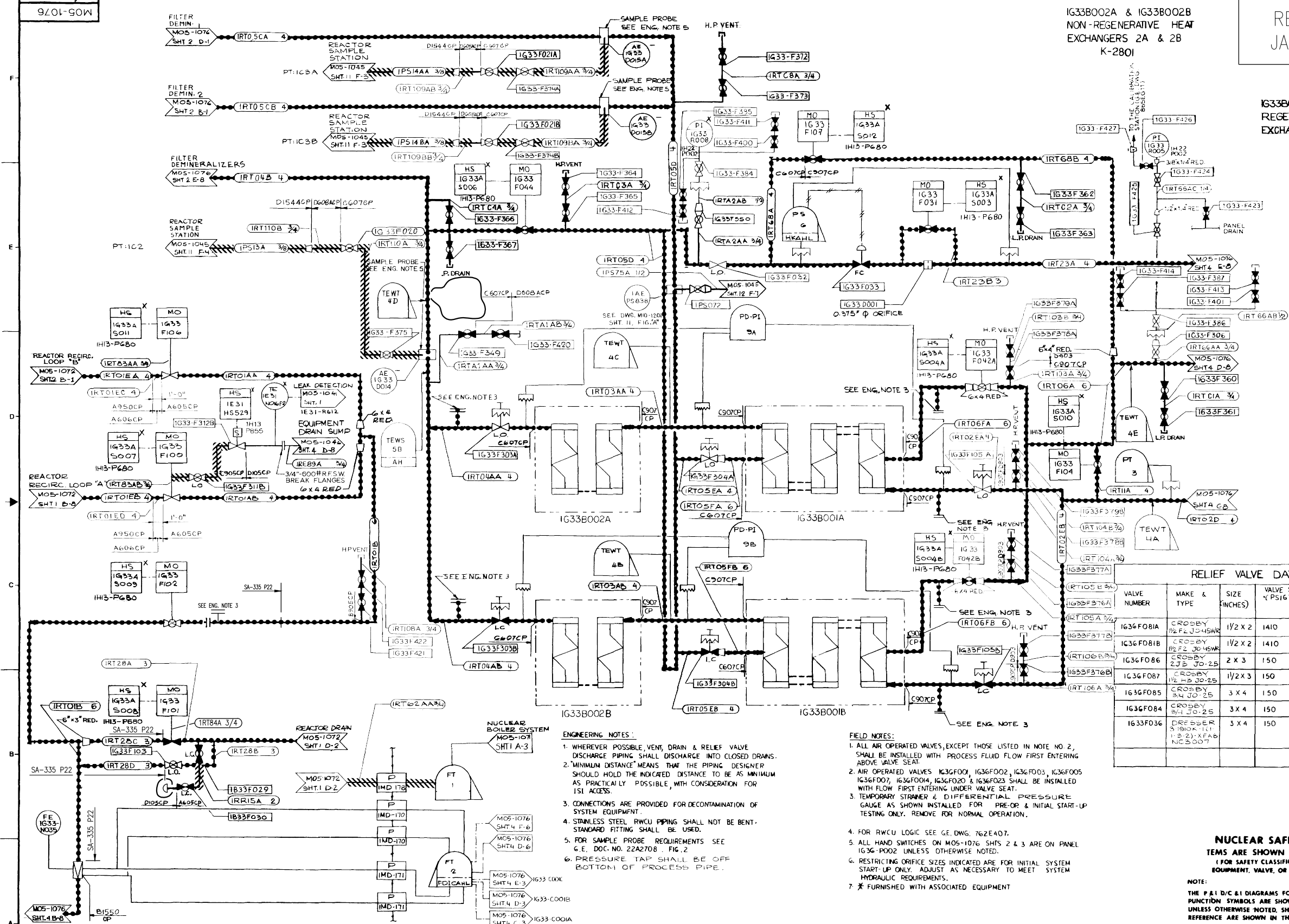


901-1076

IG33B002A & IG33B002B
NON-REGENERATIVE HEAT
EXCHANGERS 2A & 2B
K-2801

REVISION 16
JANUARY 2014

IG33B001A & IG33B001B
REGENERATIVE HEAT
EXCHANGERS 1A & 1B
K-2801



**NUCLEAR SAFETY RELATED
ITEMS ARE SHOWN ON THIS DRAWING**
(FOR SAFETY CLASSIFICATION SEE PIPING,
EQUIPMENT, VALVE, OR INSTRUMENT LISTS.)

**CLINTON POWER STATION
FINAL SAFETY ANALYSIS REPORT**

FIGURE 3.6-1
DIVISIONAL SEPARATION AND
HIGH-ENERGY P&ID'S-
REACTOR WATER CLEAN-UP
SHEET 66 OF 111

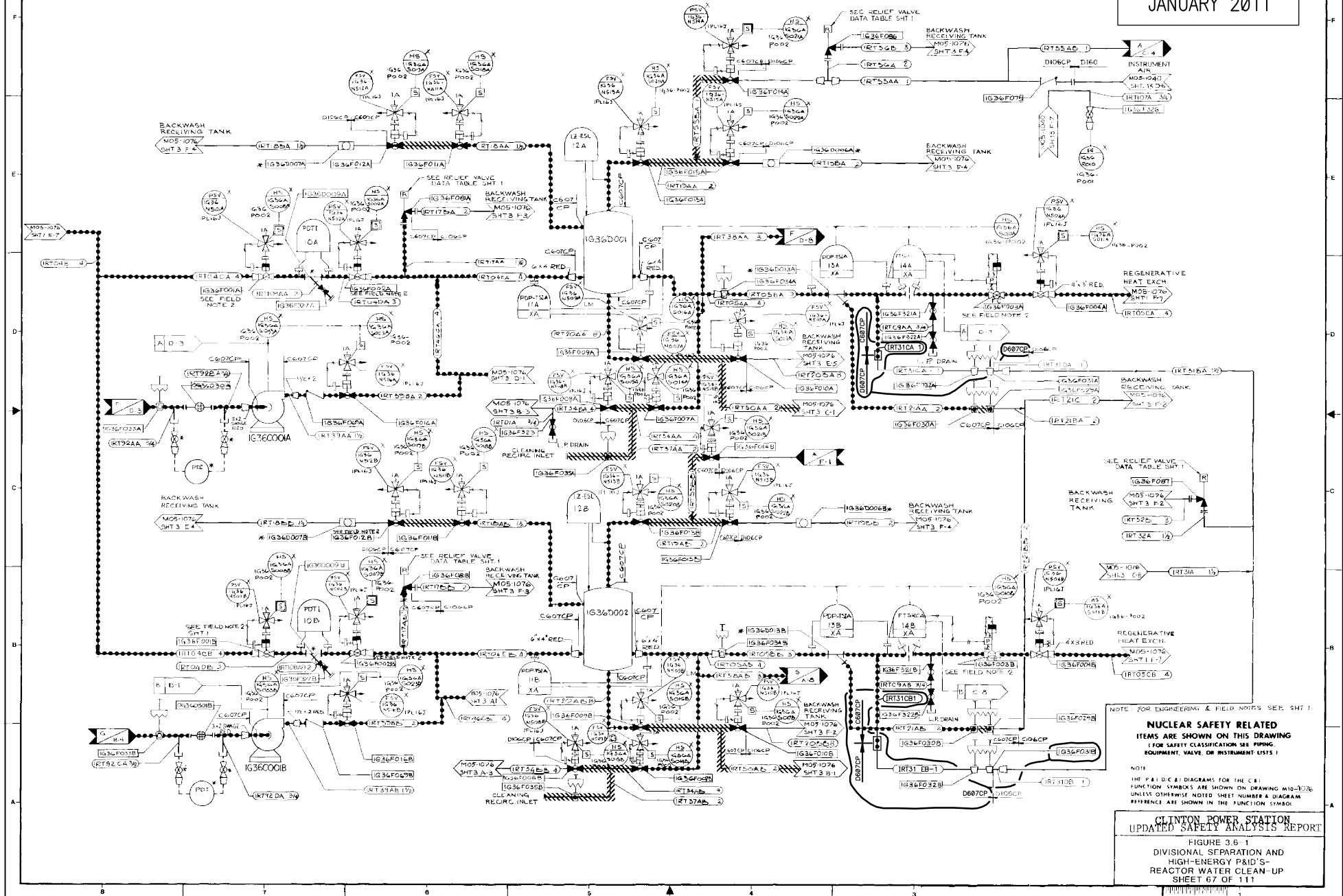
9/01-90W

IG36C001A & IG36C001B
REACTOR WATER CLEAN-UP
HOLDING PUMPS 1A & 1B
K-2801

CHANGES PER EC 377391

IG36D001 & IG36D002
CLEAN-UP FILTER
DEMNERALIZERS
K-2801

REVISION 14
JANUARY 2011



NOTE: FOR ENGINEERING & FIELD NOTES SEE SHT 1.

NUCLEAR SAFETY RELATED
ITEMS ARE SHOWN ON THIS DRAWING
(FOR SAFETY CLASSIFICATION SEE PIPING,
EQUIPMENT, VALVE, OR INSTRUMENT LISTS)

NOTE:
THE P&ID/C&I DIAGRAMS FOR THE C&I
FUNCTION SYMBOLS ARE SHOWN ON DRAWING M10-1076
UNLESS OTHERWISE NOTED SHEET NUMBER & DIAGRAM
REFERENCE ARE SHOWN IN THE FUNCTION SYMBOL.

CLINTON POWER STATION
UPDATED SAFETY ANALYSIS REPORT

FIGURE 3.6-1
DIVISIONAL SEPARATION AND
HIGH-ENERGY P&ID'S
REACTOR WATER CLEAN-UP
SHEET 67 OF 111

NOTE: FOR ENGINEERING & FIELD NOTES SEE SHT. 1

NOTE:

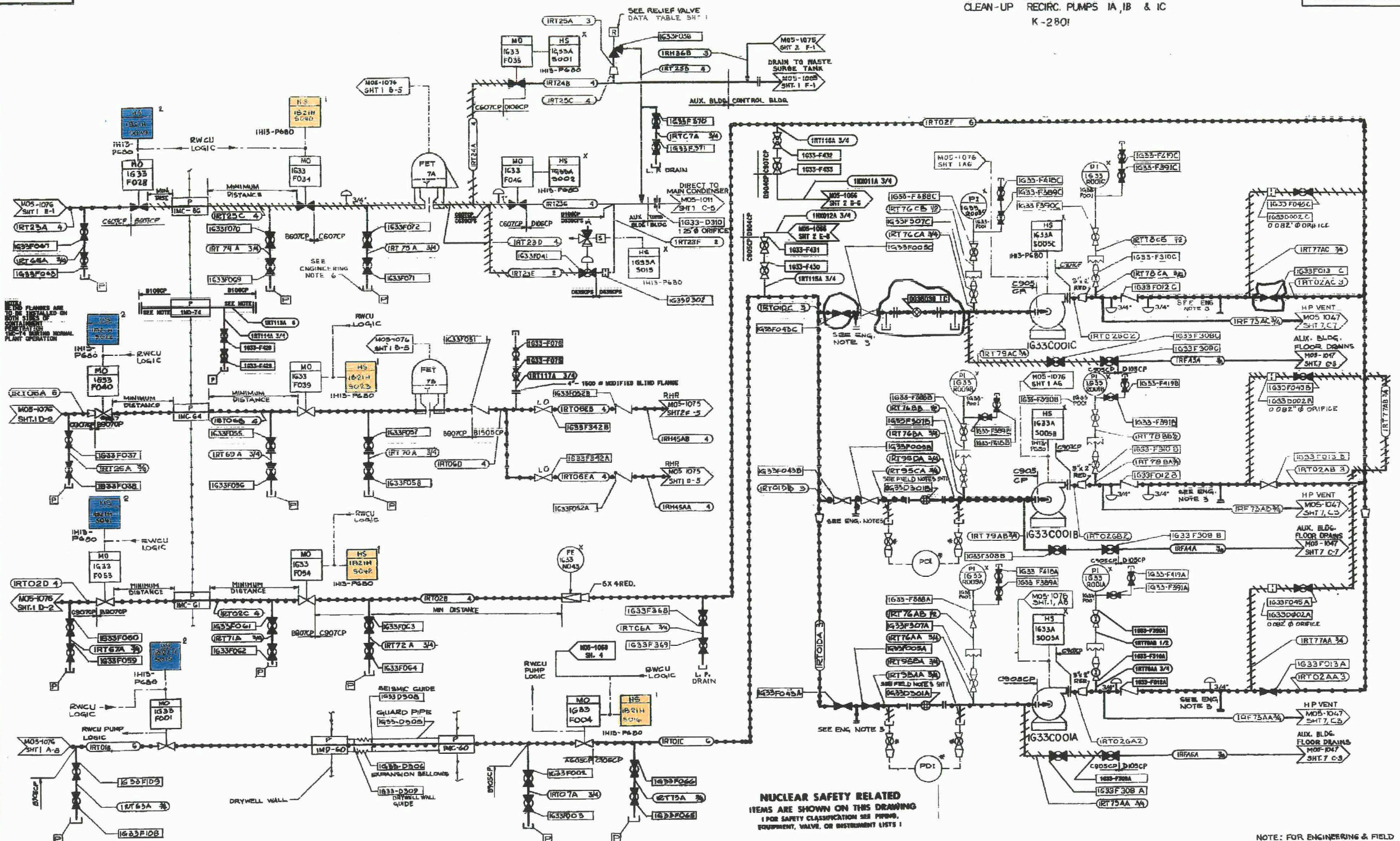
THE P & I D/C & I DIAGRAMS FOR THE C&I
FUNCTION SYMBOLS ARE SHOWN ON DRAWING M10-9076
UNLESS OTHERWISE NOTED, SHEET NUMBER & DIAGRAM
REFERENCE ARE SHOWN IN THE FUNCTION SYMBOL.

FIGURE 3.6-1
DIVISIONAL SEPARATION AND
HIGH-ENERGY P&ID'S-
REACTOR WATER CLEAN-UP
SHEET 68 OF 111

9201-90M

IG33C001A, IG33C001B & IG33C001C
 CLEAN-UP RECIRC. PUMPS 1A, 1B & 1C
 K-2801

REVISION 12
 JANUARY 2007



NUCLEAR SAFETY RELATED
 ITEMS ARE SHOWN ON THIS DRAWING
 (FOR SAFETY CLASSIFICATION SEE PWDING,
 EQUIPMENT, VALVE, OR INSTRUMENT LISTS)

NOTE: FOR ENGINEERING & FIELD
 NOTES SEE SHT 1

CLINTON POWER STATION
 UPDATED SAFETY ANALYSIS REPORT

FIGURE 3.6-1
 DIVISIONAL SEPARATION AND
 HIGH-ENERGY PAID'S-
 REACTOR WATER CLEAN-UP
 SHEET 69 OF 111