

TVA

Office of Nuclear Power

PROJECT: WBN

SYSTEM: SG

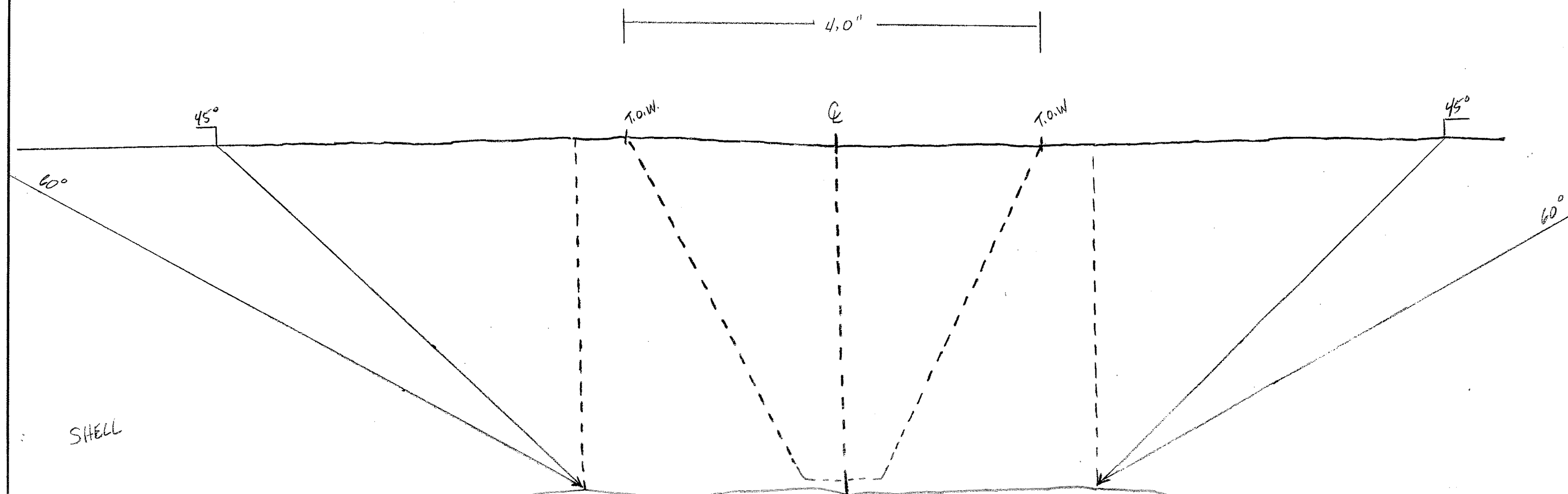
REPORT NO.:

UNIT: 2

WELD NO: SG-2-3-2

R.P2455

3.422 3.417 3.389 3.386 3.420 3.412 3.304 3.295 3.308 3.306 3.310 3.312 3.309 3.307 3.314



REQUIRED CORE COVERAGE
 $W \times H \times L = \text{CU IN}$
 $5.0" \times 3.348" \times 426.5" = 7139.61 \text{ in}^3$

TOTAL EXAM COVERAGE (ACHIEVED)
 $\left[1 - \frac{(\text{LIMITATION} / \text{REQUIRED})}{1} \right] \times 100 = \%$
 $\left[1 - (803.52 / 7139.61) \right] \times 100 = 88.75 \%$

TUBE
SHEET

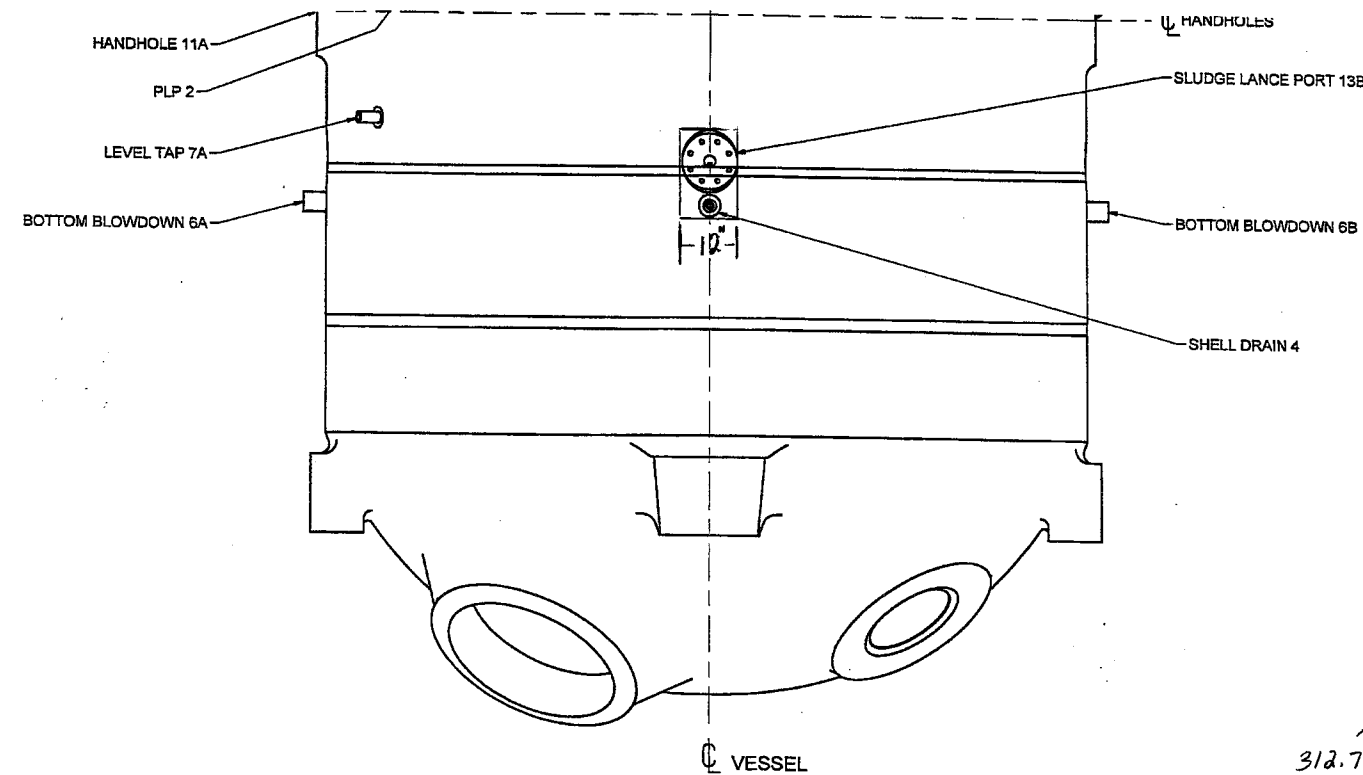
TVA

Office of Nuclear Power

PROJECT: WBN SYSTEM: SG

UNIT: U2 WELD NO: SG-2-3-2

REPORT NO.: R-P 2455

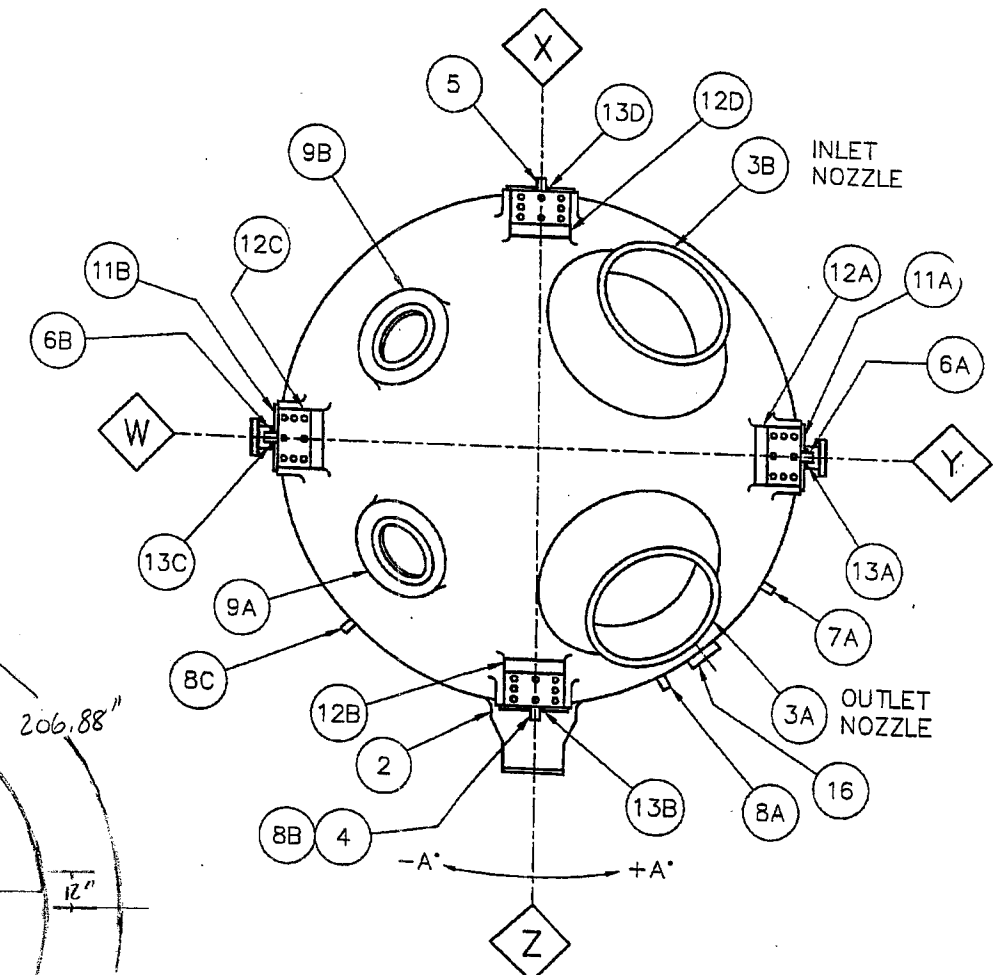
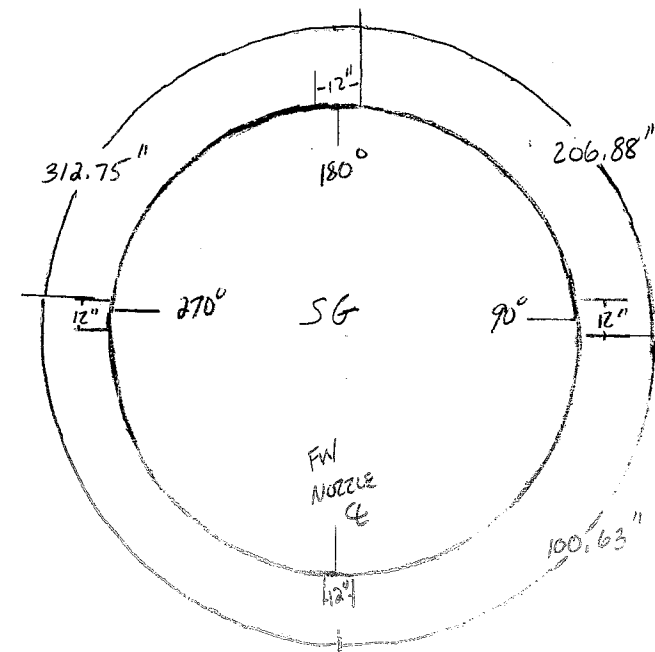


LIMITATIONS DUE TO SLUDGE LANCE PORTS, BOTTOM BLOWDOWNS, AND SHELL DRAIN

$$W \times H \times L = \text{CU IN}^3$$

$$5.0" \times 3.348" \times 12" = 200.88 \times 4 = 803.52 \text{ in}^3$$

LEVEL TAP 7A WITHIN SCAN AREA; HOWEVER COVERAGE ACHIEVED BY SKEWING ± 20 DEGREE.



BOTTOM VIEW
(STEAM DRUM NOT SHOWN)