



**UNITED STATES
NUCLEAR REGULATORY COMMISSION**
WASHINGTON, D.C. 20555-0001

October 6, 2016

Current Owner
BPS Realty LLP
145 Cherry Street
Waterbury, CT 06702

**SUBJECT: BENRUS CLOCK COMPANY – REQUEST FOR INITIAL SITE VISIT AND TO
PERFORM RADIOLOGICAL SURVEYS**

Dear Current Owner:

I am writing to inform you that our records indicate that your property at 145 Cherry Avenue, Waterbury, Connecticut, is a site where radium-226 was previously used to manufacture radium-luminous dials that were used in Benrus watches. If you are not the current owner of the property, please let us know whom we should contact. Radium-226 is a radioactive isotope that, in certain quantities, may pose a risk to public health and safety. Radium-226 is regulated by the U.S. Nuclear Regulatory Commission (NRC). We do not know whether there is a current radiological issue at your property, and it is important that you contact us at your earliest convenience. We are requesting access to your property to perform radiological surveys and to collect samples to determine whether there is any residual contamination resulting from this historical manufacturing on your property. This testing will not damage your property and these tests will be conducted at no cost to you. If residual contamination at your property has already been remediated, please provide us with records describing cleanup activities and the status of the remediation.

To successfully complete our tests, we need to schedule an initial visit. The initial site visit will serve two purposes: 1) to determine whether there is any readily detectable radium contamination; and 2) to allow us to start planning a scoping survey, if needed. During our initial site visit we will determine if a follow-up scoping survey is necessary. The scoping survey will involve a more detailed radiological survey to determine if there is any residual contamination. After each visit, we will share results with you as soon as they are available.

These tests will determine whether your site requires remediation to remove residual contamination. Should remediation be required, we will provide additional information on any actions that may be necessary to ensure protection of public health and safety. Please be aware that under the NRC's regulations, site owners are responsible for the costs associated with these remediation activities; as a regulatory agency, the NRC cannot provide funding. This does not, however, preclude site owners from using alternative legal options that may be available under State or Federal law to fund remediation activities. We recognize that you may not be aware of historical radium manufacturing at your site and we will continue to work with you to address and resolve this matter.

The enclosed Site Summary Report provides all of the information that the NRC has concerning historical radium storage at your property, which we found through a search of publicly available

information. The enclosed Backgrounder provides more detail on the history of radium use and its potential health effects. The enclosed brochure provides an overview of the NRC.

In accordance with 10 CFR 2.390 of the NRC's "Agency Rules of Practice and Procedure," a copy of this letter will be available electronically for public inspection in the NRC Public Document Room or from the Publicly Available Records component of NRC's Agencywide Documents Access and Management System (ADAMS). ADAMS is accessible from the NRC Web site at <http://www.nrc.gov/reading-rm/adams.html>

We would like to work with you to schedule our initial site visit and answer any questions you might have. At your earliest convenience, please contact Mr. Matthew Meyer, Acting Chief, Materials Decommissioning Branch, Division of Decommissioning, Uranium Recovery and Waste Programs, Office of Nuclear Materials Safety and Safeguards, at (301) 415-6198 or Mr. Richard Chang, Project Manager, at (301) 415-5563.

Sincerely,


John R. Tappert, Director
Division of Decommissioning, Uranium Recovery
and Waste Programs
Office of Nuclear Material Safety
and Safeguards

Docket No.: 3038943

Enclosures:

1. Site Summary Report
2. Radium Backgrounder
3. U.S. Nuclear Regulatory Commission *Overview*

REGISTERED LETTER – RETURN RECEIPT REQUESTED

Benrus Clock Company: Site Summary

The following information was extracted from public records and the “CT File.PDF” (CT-DEP, 2009).

Address

145 Cherry Avenue, Waterbury, CT

Site Description/History

The company was founded in New York City in 1921. Benrus also had a factory in Waterbury CT, which was once the Movement Factory for the Waterbury Clock Company, where they made the cases for Benrus watches. The Benrus Clock Company in Waterbury, CT historically produced watches with radium-luminous dials.

The original building is currently owned and occupied by Bender Plumbing. According to ATSDR (1999), Bender Plumbing had extensive testing done at the Benrus factory during the purchase of the property; however, routine testing for radium was not normally part of a pre-sale environmental study.

The amount/extent of radium contamination at these sites (including historical information and/or informed assumptions about the radium facilities’ structures/areas, processes, and activities)

In 1998, the US EPA contacted the Agency for Toxic Substances and Disease Registry (ATSDR) to assist in conducting a public health assessment of structures that once housed clock factories in four Connecticut municipalities. The purpose of the health assessment was to evaluate the radiological survey data previously collected by the Connecticut Department of Environmental Protection (CT-DEP) at structures that once housed clock factories and to determine whether a public health hazard exists at any of these sites from the radiological contamination. The CT DEP requested assistance from the US Department of Energy (DOE) in conducting radiological surveys of the structures that once housed clock factories. The surveys were completed in April of 1998.

For the former Benrus Clock building (occupied by Bender Plumbing at the time of the 1998 survey), the 1999 ATSDR Public Health Assessment reported isolated areas of radium contamination on the 4th, 5th, and 7th floors (Table 1). ATSDR concluded that radiation levels were above the EPA risk-based cleanup level (15 mrem/yr) in isolated areas of the fourth, fifth, and seventh floors. ATSDR concluded that radiological contamination was detected at levels that may pose a public health hazard to occupants of the former Benrus Clock Company building; however, ATSDR stated that none of the radiation levels detected pose an immediate health problem. The Connecticut Department of Public Health recommended that individuals be disassociated from areas with radiation at levels exceeding 15 mrem/year.

Table 1. 1998 Radiological Survey Results for the former Benrus Clock Building (ATSDR 1999)

Town: Waterbury Clock Company Name: Benrus Clock Company Current Occupant(s): Bender Plumbing

Radiological Parameters (units)	Location	Measurement Description	Maximum Level	Background	CL
Gamma radiation (uR/hr)	1st floor	Direct contact	0	10	15
		Measured at Waist level	0		
	2nd floor	Direct contact	0		
		Measured at Waist level	0		
	3rd floor	Direct contact	0		
		Measured at Waist level	0		
	4th floor	Direct contact	120		
		Measured at Waist level	26		
	5th floor	Direct contact	40		
		Measured at Waist level	15		
	6th floor	Direct contact	0		
		Measured at Waist level	0		
	7th floor	Direct contact	600		
		Measured at Waist level	100		
Radon-222 (pCi/L)	4th floor	Not applicable	1.0	NR	4

EPA cleanup level = 15; Source = ATSDR, 1999

In 2003, the Valley Council of Governments (in Derby CT) contracted with Sciencetech Inc. to provide radiological surveys in former clock factory buildings in the townships of Waterbury, Bristol and Thomaston as part of the Connecticut Radium Decontamination and Decommissioning Project. Surveys in the former Benrus Clock Company building conducted by Sciencetech Inc. identified radiological contaminated areas on the 4th, 5th, and 7th floors. Bender Plumbing was identified as the occupant of the building at the time of the survey in 2003. Isolated discrete areas of contamination were found on walls and floors of the 4th and 5th levels. Numerous discrete areas were identified on the walls, around windows, and on floors of the 7th level. Radiological survey data consisted of background counts per minute and maximum gross contact counts per minute and are presented in Table 2. (Note: Additional details of the 2003 Sciencetech radiological surveys are not known.)

Table 2. 2003 Radiological Survey Results for the former Benrus Clock Building (Sciencetech, 2003)

Photo Page	Town	Building	Location	Contamination Area	Surface	Approximate Area Size	Background Counts	Maximum Gross Counts (on contact)	Estimated 18" Count
BP-2	Waterbury	Bender	Seventh Floor	Floor along East wall and by windows	Wood flooring	48 ft x 5 ft	8,000	25,000	
BP-3	Waterbury	Bender	Seventh Floor	Circular hole on floor	Epoxy or concrete on wood	6 in diameter hole	8,000	50,000	
BP-3	Waterbury	Bender	Seventh Floor	Floor along North wall and by windows	Epoxy or concrete on wood	30 ft x 5 ft	8,000	60,000	
BP-4	Waterbury	Bender	Seventh Floor	Pillar 708	Painted brick	4 ft x 2 ft	10,000	105,000	
BP-5	Waterbury	Bender	Seventh Floor	Base of Pillar 707	Painted brick	Spot	10,000	57,000	
BP-6	Waterbury	Bender	Seventh Floor	North Corner by stairs	Wood flooring	2 ft x 3 ft	8,000	165,000-290,000	
BP-7	Waterbury	Bender	Seventh Floor	Floor area by center of duct	Wood flooring	General area (too many items to see clearly)	8,000	160,000	
BP-8	Waterbury	Bender	Seventh Floor	Pillar 717 piping	Painted brick	Pipe	10,000	570,000	
BP-9	Waterbury	Bender	Seventh Floor	Wall by window	Painted brick	Possibly behind heater	10,000		
BP-10	Waterbury	Bender	Seventh Floor	Floor along West wall	Wood flooring	8 ft x 70 ft (less contamination as you go south)	8,000	60,000-80,000	
BP-11	Waterbury	Bender	Seventh Floor	Floor aisle by Southeast	Wood flooring	5 ft x 2 ft	8,000	16,000	
BP-12	Waterbury	Bender	Fifth Floor	Floor by East windows	Wood flooring	15 ft x 5 ft (proposal says 4 spots)	8,000	16,000-38,000	
	Waterbury	Bender	Fifth Floor	Floor by West windows	Wood flooring	2 ft x 1 ft	8,000	16,000	
BP-13	Waterbury	Bender	Fourth Floor	Floor by East windows	Wood flooring	25 ft x 5 ft (proposal says 6 spots)	8,000	16,000-80,000	
	Waterbury	Bender	Fourth Floor	Floor by East windows (further south)	Wood flooring	15 ft x 3 ft	8,000	13,000-18,000	

Summary of Current Radium Levels:

As of November 2015, current levels of radium are unknown based on information reviewed for this report.

Location and population near the sites

This facility now houses Bender Plumbing, which employs a staff of approximately 50-99. It should be noted that there are residential areas (Figure 1) within close proximity to the former clock company.

Waterbury, a city in New Haven County, CT, is on the Naugatuck River, 33 miles southwest of Hartford and 77 miles northeast of New York City. According to the 2010 U.S. Census, the population of Waterbury was 110,366; the 2014 population estimate for the city was 109,307 (United States Census Bureau, 2015).

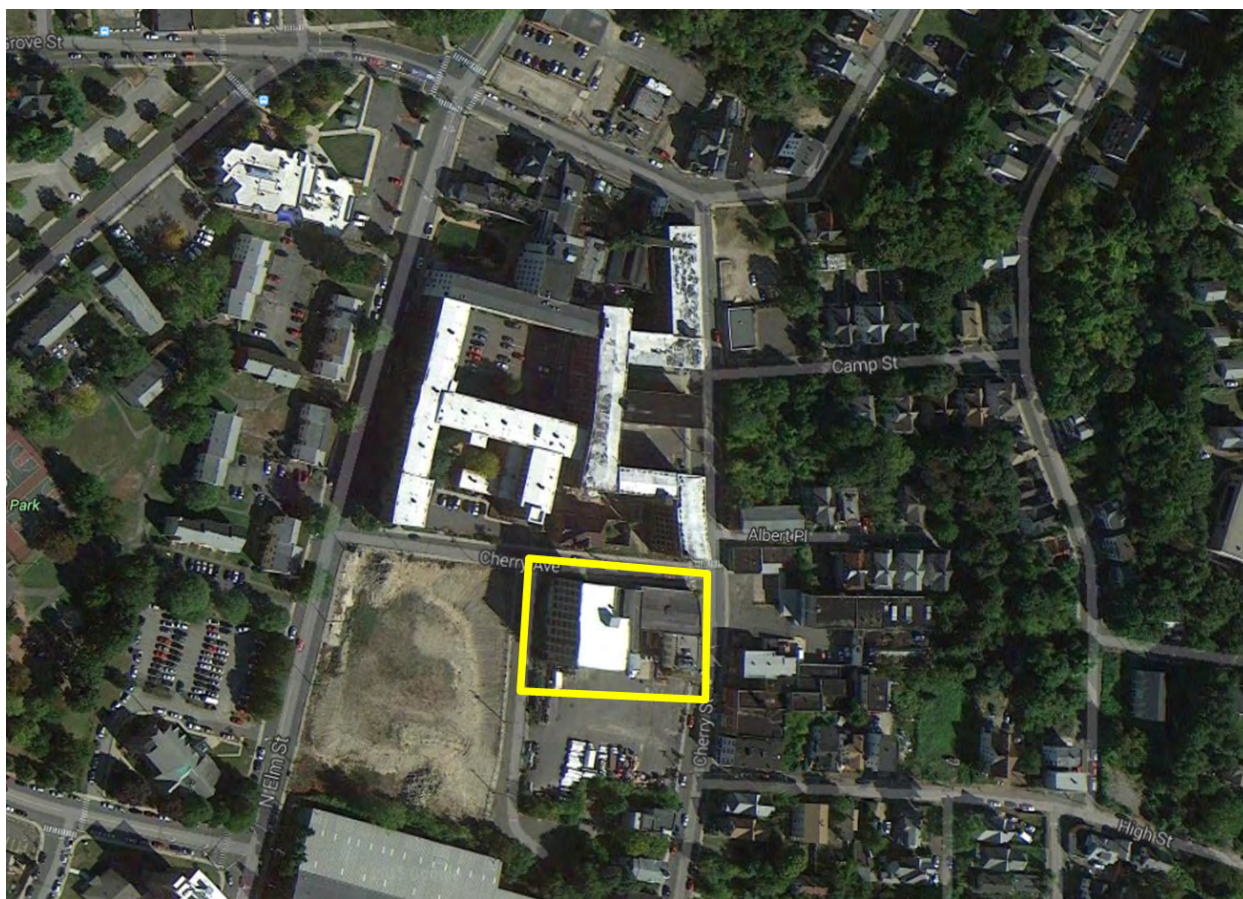


Figure 1. Location of Benrus Clock Company (Waterbury Clock Company is the large facility just to the North) (Google Earth, 2015)

Current State/other Federal involvement

In 2001, the CT State Bond Commission approved \$750,000 to support cleanup of radioactive material found at old clock factory sites in Bristol, New Haven, Thomaston and Waterbury. It is unknown if any of these clean-up funds were allocated to the former Benrus Clock Company site.

Current access, activities, and uses at the site

This seven story building is being used as a warehouse for plumbing supplies. The exterior of the building has not been renovated, as it appears to be in similar conditions to that of the original watch factory. The only exception to this is the addition put on the first floor for offices. From the images (see figures 2 and 3), it appears that the parts of the factory directly on Cherry Avenue and at the Corner of Cherry Street and Cherry Avenue are vacant and that Bender Plumbing is using the southern-most part of the facility (Figure 4). It is unclear, however, if Bender is using the vacated sections of the Benrus facility for storage.



Figure 2. Benrus Clock Company (corner of Cherry Street and Cherry Avenue) (Google Earth, 2015)



Figure 3. Entrance to old Benrus Clock Factory on Cherry Avenue (Google Earth, 2015)



Figure 4. Southeast section of Benrus Clock Company, occupied by Bender Plumbing (Google Earth, 2015)

Existing Engineering Controls

Based on Figure 3 (2015 Google Earth), the door to the old Clock Factory (on the opposite side of the building from the Bender Plumbing entrance) has been covered with metal and there is fencing around the facility. Access to the vacated parts of the building may be possible through Bender Plumbing, however.

Prioritization Ranking

Radium is confirmed to have been present at the site based on historical documentation that radium was present and confirmed by radiological survey data. The site consists of a building potentially contaminated by radium. The building is occupied. Therefore, the site is classified as Tier 1.

References

Agency for Toxic Substances and Disease Registry (ATSDR). 1999. Public Health Implications of Radiation Contamination at Former Clock Factories Located in Bristol (Hartford County), New Haven (New Haven County), Thomaston (Litchfield County), and Waterbury (New Haven County) Connecticut. January 29, 1999. <http://www.atsdr.cdc.gov/HAC/pha/PHA.asp?docid=959&pg=0>

CT-Department of Environmental Protection (DEP). 2009. Correspondence from CT-DEP to NRC NMSS. Collection of pdf documents about Connecticut Clock Companies. Document dates range from 1998-2004. CT File.pdf, 1806 pages.

CT Department of Public Health (DPH). 1998. Former Clock Factory Sites in Waterbury: Update. September 1998.

http://www.ct.gov/dph/lib/dph/environmental_health/eoha/atsdr/waterbury_clock_update.pdf

Google Earth. Accessed February 2015. <https://www.google.com/maps/>.

Scienteck 2003. Connecticut Radium Sites Verification Survey for the Valley Council of Governments, Connecticut Radium Decontamination and Decommissioning Project. Scienteck, Inc. 143 West Street, New Milford, CT 06776. October 24, 2003.

United States Census Bureau. Accessed October 2015.

<http://quickfacts.census.gov/qfd/states/09/09800000.html>.

Summary of Benrus Clock Company Information in "CTfile.pdf" (CT-DEP, 2009)

Site_Name	Source_date	Title	Pages
Benrus Clock Company	unknown	Bender Plumbing Information	226-234
Benrus Clock Company	April 21, 1998	Department of Energy (DOE) Radiological Assistance Report cover letter and Radiological Assistance Call notes	744-747
Benrus Clock Company	1999	Document number 82A9499	511-514
Benrus Clock Company	January 29, 1999	PUBLIC HEALTH ASSESSMENT; PUBLIC HEALTH IMPLICATIONS OF RADIATION CONTAMINATION AT FORMER CLOCK FACTORIES LOCATED IN BRISTOL (HARTFORD COUNTY), NEW HAVEN (NEW HAVEN COUNTY), THOMASTON (LITCHFIELD COUNTY), AND WATERBURY (NEW HAVEN COUNTY) CONNECTICUT	1578-1619
Benrus Clock Company	April 4, 1998	Radium Contamination at Former Watch Manufacturers in Waterbury, CT	3-33
Benrus Clock Company	unknown	Update for the Old Waterbury Clock Factory Complex	1481-1484

Radium

Radium was one of the first radioactive elements ever discovered. Marie and Pierre Curie unlocked the atom's secrets in 1898, opening the door for important innovations using radioactivity in medicine and industry. Radiation quickly became a consumer and medical sensation and radium was the posterchild. Experts concluded radiation was a lifesaver after finding it reduced tumor growth and was present in the waters at some health spas. Soon there were many radium products on the market that purported to improve health and vitality. But tragic stories began to emerge of the health impacts. Perhaps the most well-known is the "radium girls," who painted watch faces with glow-in-the-dark radium paint and developed infections and jaw cancer from licking their brushes into fine points.

Early regulation

When evidence of harm began to emerge in the early 1900s, the states each made their own decisions about how to regulate. Courts also took varying approaches on victim compensation. The federal government took action to guard against false advertising and regulate mail shipments, conducted studies, and organized some voluntary protections.

As radioactive materials became more widely available following World War II, they remained largely under state control. Radium use declined in medical and consumer products in favor of other safer materials.

Regulation today

Work on securing radioactive materials took on new urgency following the terrorist attacks on the United States in September 2001. Those attacks prompted the International Atomic Energy Agency to develop a code of conduct in 2004 to limit the potential for malicious acts. That code places one form of radium, known as radium-226, and other radioactive materials into categories based on their quantity and potential hazard.

The NRC has specific security requirements tied to these categories. As support for the IAEA code grew, Congress passed the Energy Policy Act in 2005, giving the NRC authority over radium-226. This law marked the first time the federal government had a comprehensive role in ensuring the safe use of radium-226.

Many states had developed strong programs for regulating radium and other naturally-occurring radioactive materials and it took time to transition authority. The NRC had regulations in place and fully assumed oversight in 2009. Initially, NRC staff worked exclusively with the military to identify sites

where radium might be present. These discussions made clear that the NRC's role would include ensuring that sites where radium was used are maintained in a way that protects public health and safety.

In 2016, the NRC and Department of Defense signed a [Memorandum of Understanding \(MOU\)](#) describing roles in the cleanup of radium and other unlicensed radioactive materials at military sites. The MOU and a [Regulatory Issue Summary](#) clarify NRC's jurisdiction over military radium. In late 2016, the NRC began monitoring two sites under the MOU: Treasure Island Naval Station in San Francisco and Dugway Proving Ground in Utah.

In 2013, the agency learned of two commercial sites where radium-226 had been found and other federal agencies had gotten involved. The Environmental Protection Agency was overseeing portions of the Waterbury Clock Company in Connecticut. The National Park Service was overseeing Great Kills Park in New York.

NRC staff is working with the current owner of the Waterbury Clock Company site. Contaminated areas of the site are under EPA oversight through its Brownfields Program, which provides assistance to clean up contaminated properties. NRC staff is working with EPA to clarify oversight roles and responsibilities under that program.

In 2016, NRC staff began developing an MOU with the National Park Service that will also clarify the NRC's jurisdiction over radium at Great Kills Park. The NRC is monitoring cleanup activities that the Park Service is implementing under Superfund, more formally known as the Comprehensive Environmental Response, Compensation and Liability Act.

Those projects prompted a search to identify sites in NRC's jurisdiction where radium was used, and to find out how much, if any, cleanup was done. This search was not a result of any known health and safety issues. Rather, because of its mandate to protect public health and safety, the NRC wanted to be sure there were no additional sites that might pose a risk.

With the help of the Oak Ridge National Laboratory, the NRC began to develop a fuller picture of commercial radium use. The lab produced a [catalog](#) of the various products developed and sold to the public in the early 20th century. By reviewing publicly available records, Oak Ridge identified sites where radium may have been used to make consumer goods. Then the lab looked for any cleanup records. Oak Ridge transmitted the results to the NRC in November 2015. Since that time, the agency has been working on plans to gather more information about those sites.

The NRC is working with state and local governments to identify any additional records that may help clarify whether any site cleanup has taken place. The goal is to ensure that public health and safety is adequately protected at these sites.

October 2016

OTHER KEY OFFICES

- ◆ The **Office of Enforcement** develops policies and programs to enforce NRC requirements. Enforcement action is used as a deterrent to emphasize the importance of compliance with regulatory requirements and to encourage prompt identification and prompt, comprehensive correction of violations. The office manages major enforcement actions against licensees, and assesses the effectiveness and uniformity of enforcement actions taken by NRC regional offices. Enforcement powers include notices of violations, fines, and orders to modify, suspend or revoke a license. Two separate offices are responsible for investigations.
- ◆ The **Office of Investigations** conducts investigations of licensees, applicants, contractors and vendors. The office investigates all allegations of wrongdoing by individuals or organizations other than NRC employees and NRC contractors. In addition, the office keeps abreast of inquiries and inspections and advises on the need for formal investigations. It also keeps other components of the agency informed of matters under investigation as they affect safety.
- ◆ The **Office of the Inspector General** is a statutory post mandated by the Inspector General Amendments Act of 1988. The office conducts independent reviews and appraisals of internal NRC programs and conducts investigations of alleged wrongdoing by NRC employees and contractors.

Office of Public Affairs

Washington, DC 20555-0001

Telephone: (301) 415-8200

Fax: (301) 415-3716

E-mail: opa.resource@nrc.gov

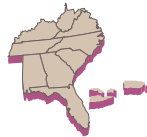
Website: www.nrc.gov

Regional Public Affairs Offices



Region I

2100 Renaissance Blvd., Suite 100
King of Prussia, PA 19406-2713
(610) 337-5330 or 337-5331



Region II

245 Peachtree Center Ave., NE., Suite 1200
Atlanta, GA 30303-1257
(404) 997-4417 or 997-4416



Region III

2443 Warrenville Road, Suite 210
Lisle, IL 60532-4352
(630) 829-9663 or 829-9662



Region IV

1600 E. Lamar Blvd.
Arlington, TX 76011-4511
(817) 200-1128



NUREG/BR-0099, Rev. 14
June 2016

STAY CONNECTED



©NRCgov



U.S. Nuclear Regulatory Commission Overview



NRC MISSION

The NRC licenses and regulates the Nation's civilian use of radioactive materials to protect public health and safety, promote the common defense and security, and protect the environment. Specifically, the NRC regulates commercial nuclear power plants; research, test and training reactors; nuclear fuel cycle facilities; and the use of radioactive materials in medical, academic and industrial settings.

The agency also regulates the transport, storage, and disposal of radioactive materials and waste, and licenses the import and export of radioactive materials. While the NRC only regulates industries within the United States, the agency works with agencies around the world to enhance global nuclear safety and security.

STATUTORY AUTHORITY

The Energy Reorganization Act of 1974 created the NRC from the Atomic Energy Commission. The new agency was to oversee — but not promote — the commercial nuclear industry. The agency began operations on January 18, 1975. The NRC's regulations can be found in Title 10, "Energy," of the *Code of Federal Regulations* (10 CFR).

The NRC, its licensees (those licensed by the NRC to use radioactive materials), and the Agreement States (States that assume regulatory authority over use of certain nuclear materials) share a responsibility to protect public health and safety and the environment. Federal regulations and the NRC's regulatory program are key, but the primary responsibility for safely handling and using these materials lies with the licensees.



ORGANIZATIONS AND FUNCTIONS

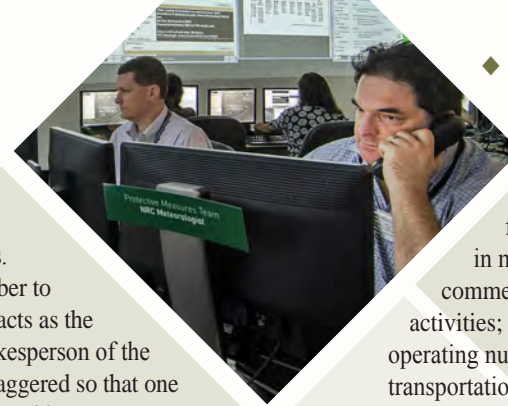
The NRC's Commission is made up of five members nominated by the President and confirmed by the U.S. Senate for 5-year terms. The President designates one member to serve as Chairman. The Chairman acts as the principal executive officer and spokesperson of the agency. The members' terms are staggered so that one Commissioner's term expires on June 30 every year. No more than three Commissioners can belong to the same political party.

The Commission formulates policies and regulations governing nuclear reactor and materials safety, issues orders to licensees, and adjudicates legal matters. The Executive Director for Operations carries out the policies and decisions of the Commission, and directs the activities of the program and regional offices. The NRC has about 3,600 employees and an annual budget of about \$1 billion.

The NRC is headquartered in Rockville, Md., and has four regional offices. The **Regional Offices** conduct inspection, enforcement (in conjunction with the Office of Enforcement), investigation, licensing, and emergency response programs. At least two NRC employees, called Resident Inspectors, are assigned to, and work out of, each nuclear power plant. The NRC also has a Technical Training Center in Tennessee.

The major program offices within the NRC include:

- ◆ **The Office of Nuclear Reactor Regulation.** Handles all licensing and inspection activities for existing nuclear power reactors and research and test reactors.
- ◆ **The Office of New Reactors.** Oversees the design, siting, licensing, and construction of new commercial nuclear power reactors.
- ◆ **The Office of Nuclear Security and Incident Response.** Oversees agency security policy for nuclear facilities and users of radioactive materials. It provides a safeguards and security interface with other Federal agencies and maintains the agency's emergency preparedness and incident response program.



- ◆ **The Office of Nuclear Material Safety and Safeguards.** Regulates activities and oversees the regulatory framework for the safe and secure production of commercial nuclear fuel and the use of nuclear material in medical, industrial, academic and commercial applications; uranium recovery activities; and the decommissioning of previously operating nuclear facilities. It regulates safe storage, transportation, and disposal of high- and low-level radioactive waste and spent nuclear fuel. The office also works with Federal agencies, States, and Tribal and local governments on regulatory matters.
- ◆ **The Office of Nuclear Regulatory Research.** Provides independent expertise and information for making timely regulatory judgments, anticipating problems of potential safety significance, and resolving safety issues. It helps develop technical regulations and standards and collects, analyzes, and disseminates information about the safety of commercial nuclear power plants and certain nuclear materials.

Three independent groups serve the Commission:

- ◆ **Advisory Committee on Reactor Safeguards,** mandated by statute, is a committee of scientists and engineers independent of NRC staff. They review and make recommendations to the Commission on all applications to build and operate nuclear power reactors, the safety aspects of nuclear facilities and the adequacy of safety standards. This includes update license amendments and license renewals.
- ◆ **Advisory Committee on the Medical Uses of Isotopes** is made up of physicians and scientists who consider medical questions and, when asked, give expert opinions to the NRC on the medical uses of radioactive materials.
- ◆ **Atomic Safety and Licensing Board Panel** provides a way for the public to get a full and fair hearing on civilian nuclear matters. Individuals who are directly affected by licensing action involving certain facilities producing or using nuclear materials may submit a request to participate in a hearing before these independent judges.

information. The enclosed Backgrounder provides more detail on the history of radium use and its potential health effects. The enclosed brochure provides an overview of the NRC.

In accordance with 10 CFR 2.390 of the NRC's "Agency Rules of Practice and Procedure," a copy of this letter will be available electronically for public inspection in the NRC Public Document Room or from the Publicly Available Records component of NRC's Agencywide Documents Access and Management System (ADAMS). ADAMS is accessible from the NRC Web site at <http://www.nrc.gov/reading-rm/adams.html>

We would like to work with you to schedule our initial site visit and answer any questions you might have. At your earliest convenience, please contact Mr. Matthew Meyer, Acting Chief, Materials Decommissioning Branch, Division of Decommissioning, Uranium Recovery and Waste Programs, Office of Nuclear Materials Safety and Safeguards, at (301) 415-6198 or Mr. Richard Chang, Project Manager, at (301) 415-5563.

Sincerely,

/RA/

John R. Tappert, Director
Division of Decommissioning, Uranium Recovery
and Waste Programs
Office of Nuclear Material Safety
and Safeguards

Docket No.: 3038943

Enclosures:

1. Site Summary Report
2. Radium Backgrounder
3. U.S. Nuclear Regulatory Commission *Overview*

REGISTERED LETTER – RETURN RECEIPT REQUESTED

DISTRIBUTION:

RidsRgn1MailCenter R. Powell, RI T. Jackson, RI R. Chang, NMSS

ADAMS Accession No.: ML16277A195 (Pkg); ML16277A291 (Ltr)

OFFICE	DUWP/MDB/PM	DUWP/LA	RI/DNMS	OGC (NLO)	DUWP/MDB/BC (A)	DUWP/D
NAME	JWhited	SAchten	R. Powell	TCampbell	MMeyer	JTappert
DATE	09/27/2016	09/27/2016	09/28/2016	10/06/2016	10/01/2016	10/06/2016

OFFICIAL RECORD COPY