



FENOC
Davis-Besse Power Station
Transmittal Report

Data Date Time: 09/09/2016 07:11:34 AM
Page 1 of 1

Copy Holder Number: 1665

Name: DOC. CONTROL DESK

Location / Address: OFFSITE / USNRC DIVISION OF EMERGENCY PREPAREDNESS

Transmittal Number: DB-09092016-260054

One White Flint North

11555 Rockville Pike

Rockville, Maryland 20852-2738

Transmittal Date: 9/9/2016 7:10:32 AM

Unit	Document Number	Doc Type	Sheet/Section	Revision	Version	Change Type	Change Number	Document Status	HC	AC	CD	TOC1	TOC2	Changes
DBI	DBRM-EMER-5001	REFERENCE MATERIAL		0001				REVISED	1	0	0	EPDA2		
DBI	DBRM-EMER-5001	REFERENCE MATERIAL		0002				APPROVED	1	0	0	EPDA2		

Use this document transmittal to update the identified documents and remove the superseded documents from use.

AX45
NRR

DAVIS-BESSE REFERENCE MATERIAL		Number:	DBRM-EMER-5001
Title:	Release in Progress Reference Material	Revision:	02
		Page	1 of 4

Release in Progress Reference Material

(Revisions, changes, or alterations to this diagram shall be processed in accordance with NG-NS-00500, Nuclear Emergency Preparedness and NOBP-SS-3401, FENOC Document Hierarchy)

APPROVED BY:

James M. Vetter

Emergency Response Manager

8-29-16

Date

Effective date: 09/09/16

DAVIS-BESSE REFERENCE MATERIAL		Number: DBRM-EMER-5001	
Title:	Release in Progress Reference Material	Revision: 02	Page 2 of 4

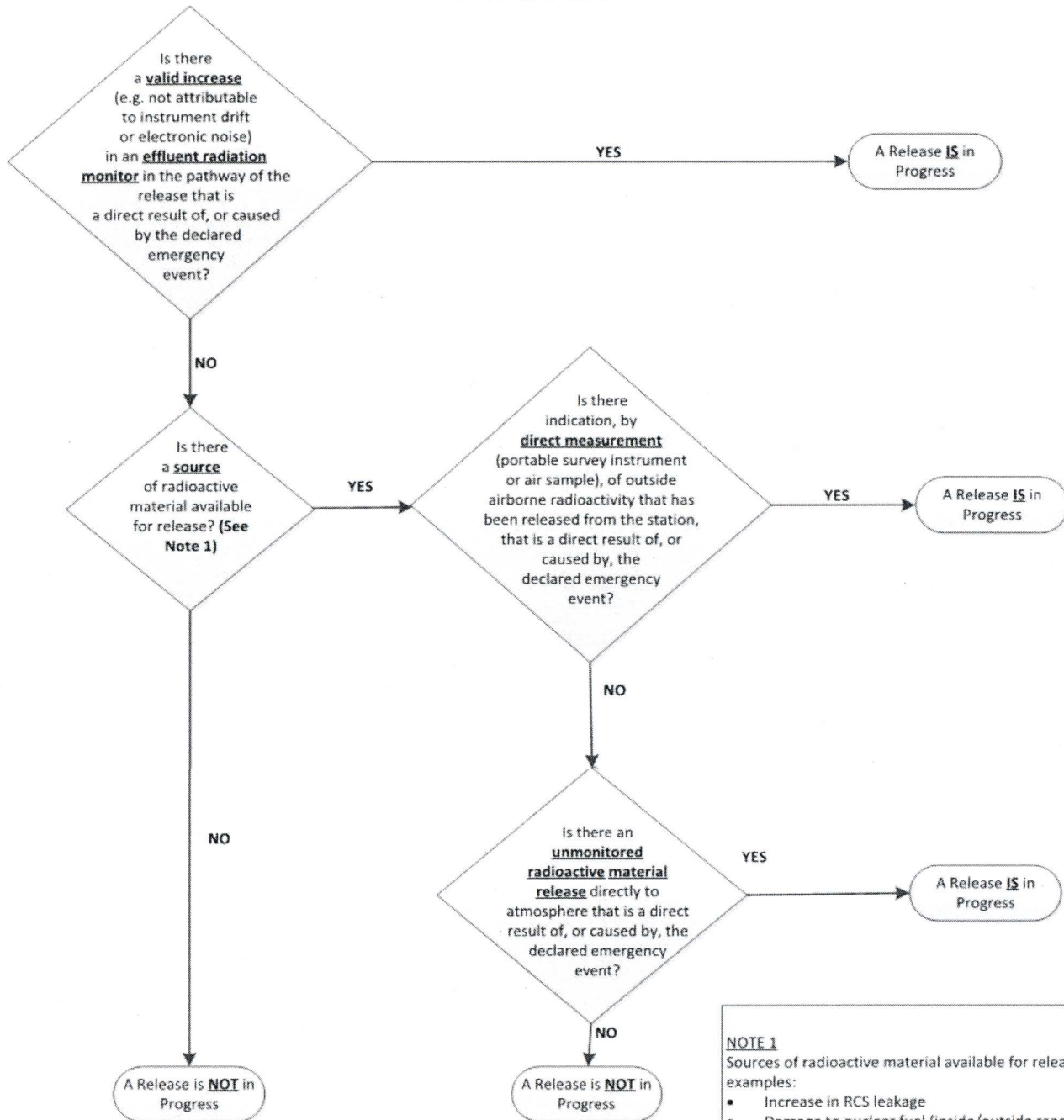
The purpose of this reference material is to provide the Emergency Response Organization with operator aids (e.g., "Hard Card") to be used in conjunction with NORM-LP-5001, FENOC Position on "Release in Progress" for the Emergency Response Organization. These Hard Cards represent a site-specific format of the flowcharts, which includes the effluent radiation monitors, used in the decision making process for airborne and liquid releases of radioactive material, during declared emergency events. These Hard Cards are available in various Emergency Response Facilities for reference by Emergency Response Organization members.

Table of Contents

Page

Attachment 1: PWR Airborne Release in Progress Determination	3
Attachment 2: PWR Liquid Release in Progress Determination	4

PWR AIRBORNE

**NOTE 1**

Sources of radioactive material available for release examples:

- Increase in RCS leakage
- Damage to nuclear fuel (inside/outside reactor vessel)
- Damage to plant systems containing radioactive material

Gaseous Effluent Radiation Monitors:**Station Vent (RE 4598 A/B Normal)**

- Noble Gas
- Particulate
- Iodine

Station Vent (RE 4598 A/B Accident)

- Noble Gas

Main Steam Lines

- RE 609 – Main Steam 1
- RE 600 – Main Steam 2

Attachment 2 PWR LIQUID
PWR Liquid Release

DBRM-EMER-5001, Rev. 2

