

LEGEND

MAJOR INDUSTRIES

OIL AND GAS FIELDS

URBAN AREAS

ROADS

RAILROADS

LEVEES

WATER BODIES

PARISH BOUNDARY

WETLANDS

SOURCE:

1980 PARISH ATLAS OF LOUISIANA OIL AND GAS FIELDS, LOUISIANA GEOLOGICAL SURVEY (MOST RECENT AVAILABLE).

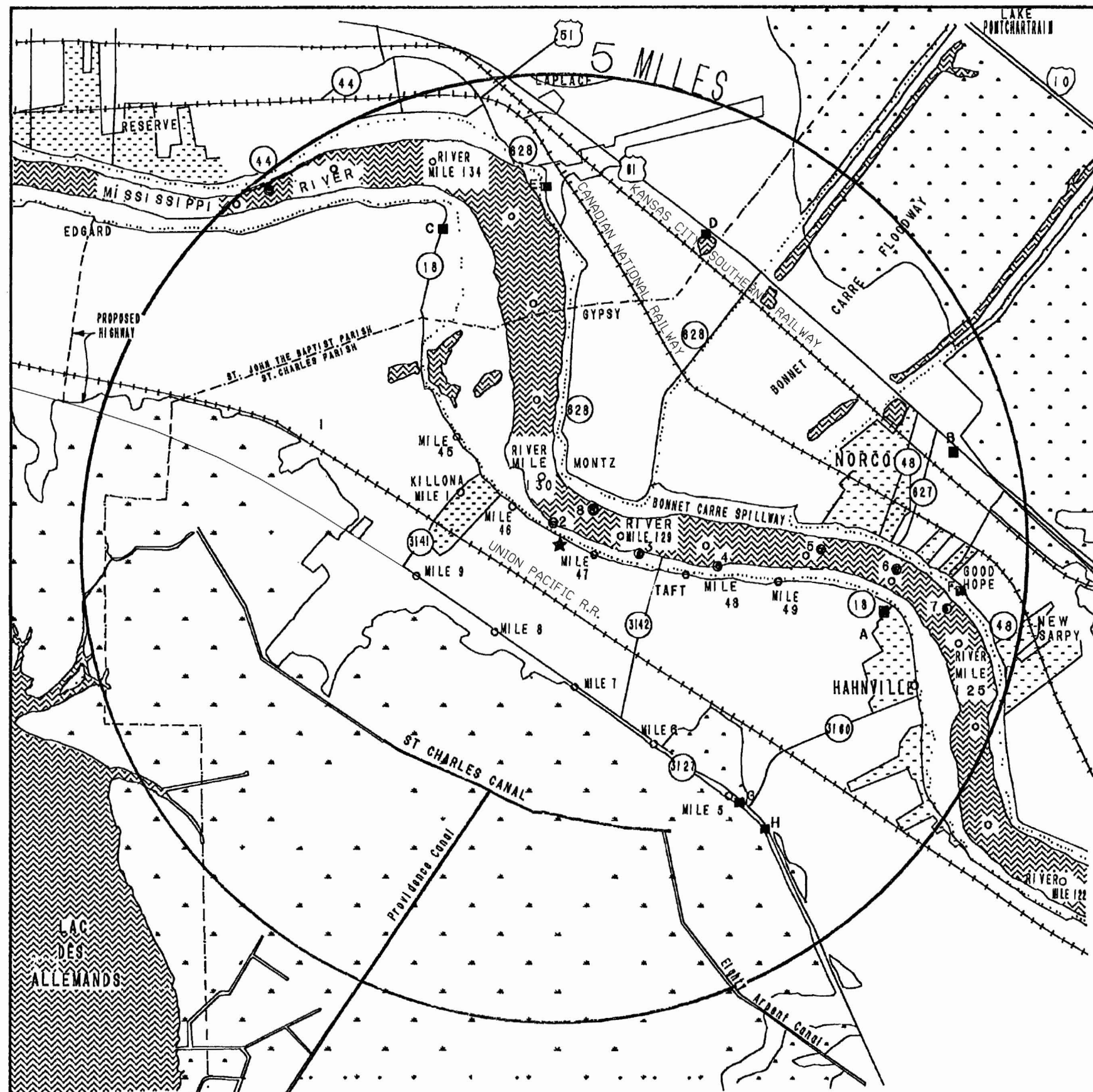


REVISION 309 (06/16)

WATERFORD STEAM
ELECTRIC STATION #3

MAJOR INDUSTRIES & OIL & GAS
FIELDS WITHIN 5 MILES OF
WATERFORD 3

FIGURE 2.2-1



LEGEND

● DOCKS AND MOORING LOCATIONS (SEE SECTION 2.2.2.4)

- 1 DUPONT DE NEMOURS CO.
- 2 LOUISIANA POWER & LIGHT - WATERFORD 1 & 2
- 3 HOOKER CHEMICAL CO. BEKER INDUSTRIES
- 4 UNION CARBIDE CORP.
- 5 SHELL CHEMICAL CO.
- 6 SHELL OIL CO.
- 7 GENERAL AMERICAN TRANSPORTATION CO.
- 8 LOUISIANA POWER & LIGHT - LITTLE GYPSY

■ ADT DATA (SEE SECTION 2.2.2.1.2)

- A 4905 IN 1978
- B 10049 IN 1978
- C 2847 IN 1978
- D 11831 IN 1978
- E 1793 IN 1978
- F 6939 IN 1978
- G 16580 IN 1993.
- H 18000 IN 1993.

*3127 IS A NEWLY CONSTRUCTED ROUTE FOR WHICH THERE IS NO PRESENT ADT DATA. THE ONLY ADT AVAILABLE WERE PROJECTIONS IN 1993.

WATERFORD 3 SITE

URBAN AREAS

ROADS

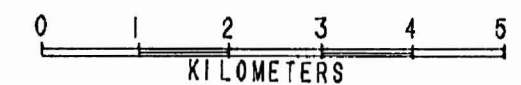
RAILROADS

LEVEES

WATER BODIES

PARISH BOUNDARY

WETLANDS



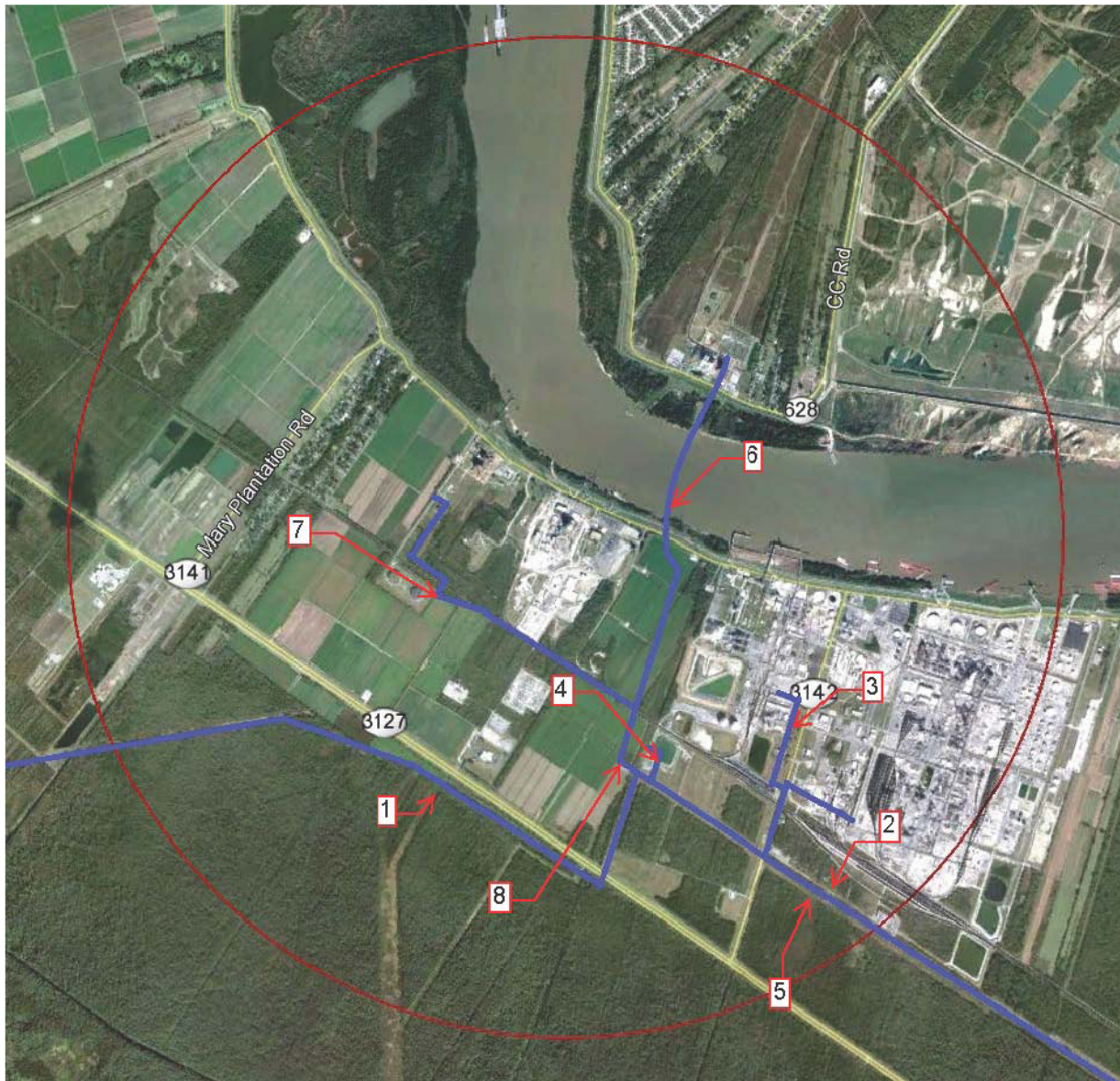
REVISION 301 (09/07)

LOUISIANA POWER & LIGHT CO.
Waterford Steam Electric Station #3
TRANSPORTATION FACILITIES
WITHIN 5 MILES OF WATERFORD 3
FIGURE 2.2-2

→(EC-5000082218, R301)

FIGURE 2.2-3 HAS BEEN INTENTIONALLY DELETED.

←(EC-5000082218, R301)



Revision 309 (06/16)

Waterford Steam
Electric Station #3

ACADIAN & ENTERPRISE PELICAN PIPELINES

Figure
2.2-3a



Revision 307 (07/13)

Waterford Steam Electric Station #3	AIR PRODUCTS AND NUSTAR PIPELINES	Figure 2.2-3b
--	-----------------------------------	------------------

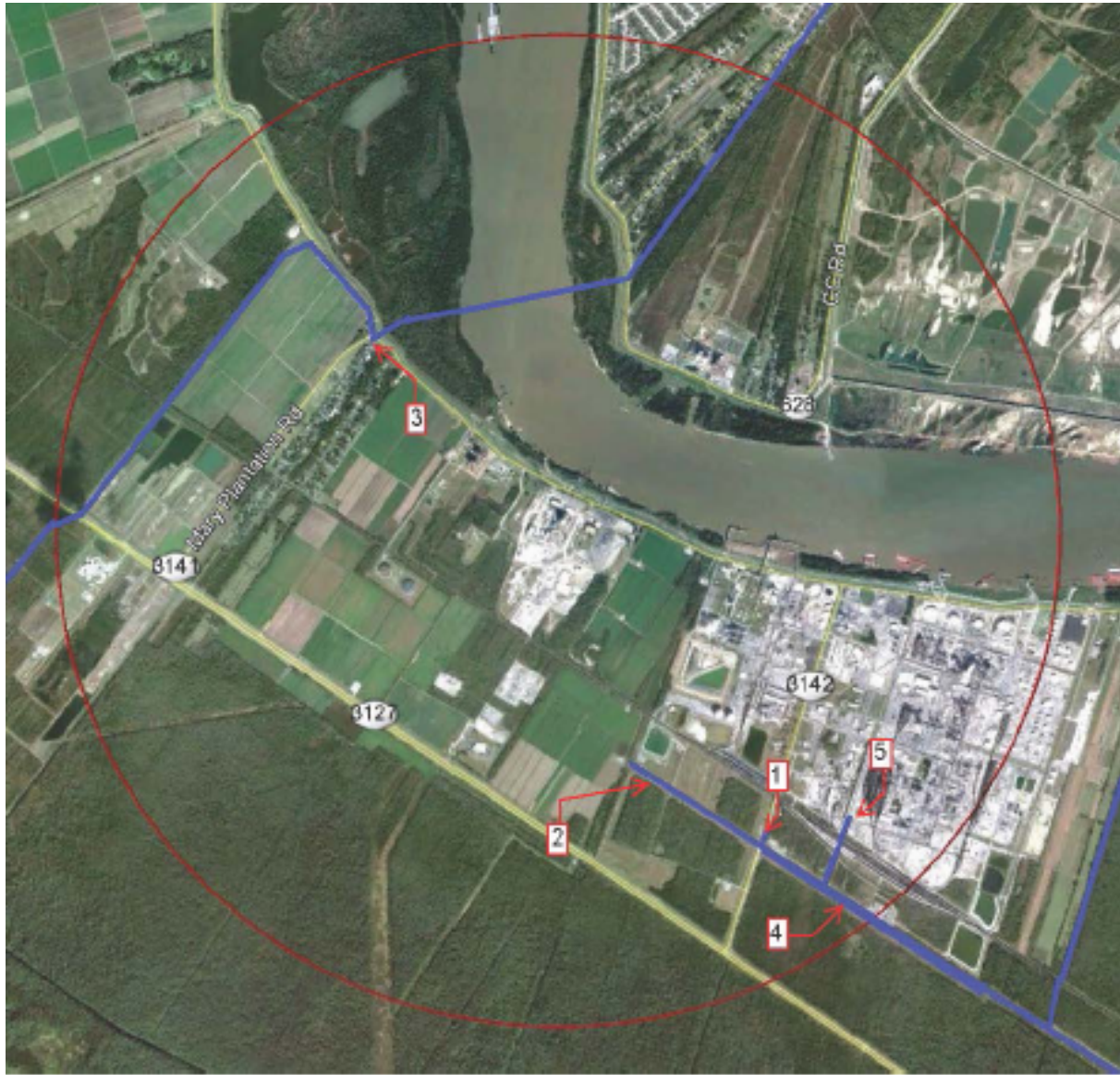


Revision 307 (07/13)

Waterford Steam
Electric Station #3

CHEVRON AND BRIDGELINE PIPELINES

Figure
2.2-3c



Revision 309 (06/16)

Waterford Steam
Electric Station #3

ENTERPRISE PIPELINES

Figure
2.2-3d

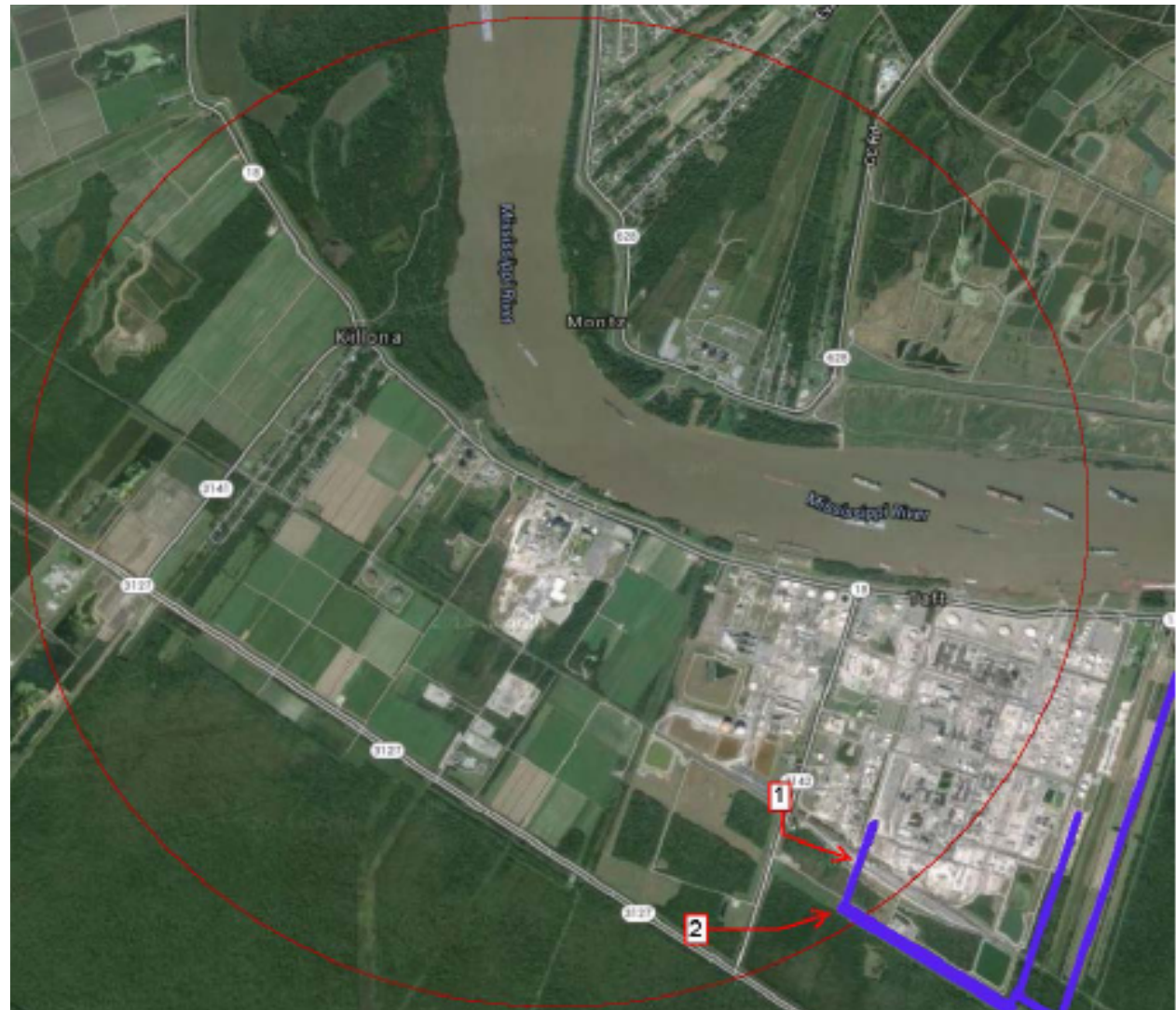


Revision 307 (07/13)

Waterford Steam
Electric Station #3

GULF SOUTH PIPELINES

Figure
2.2-3e

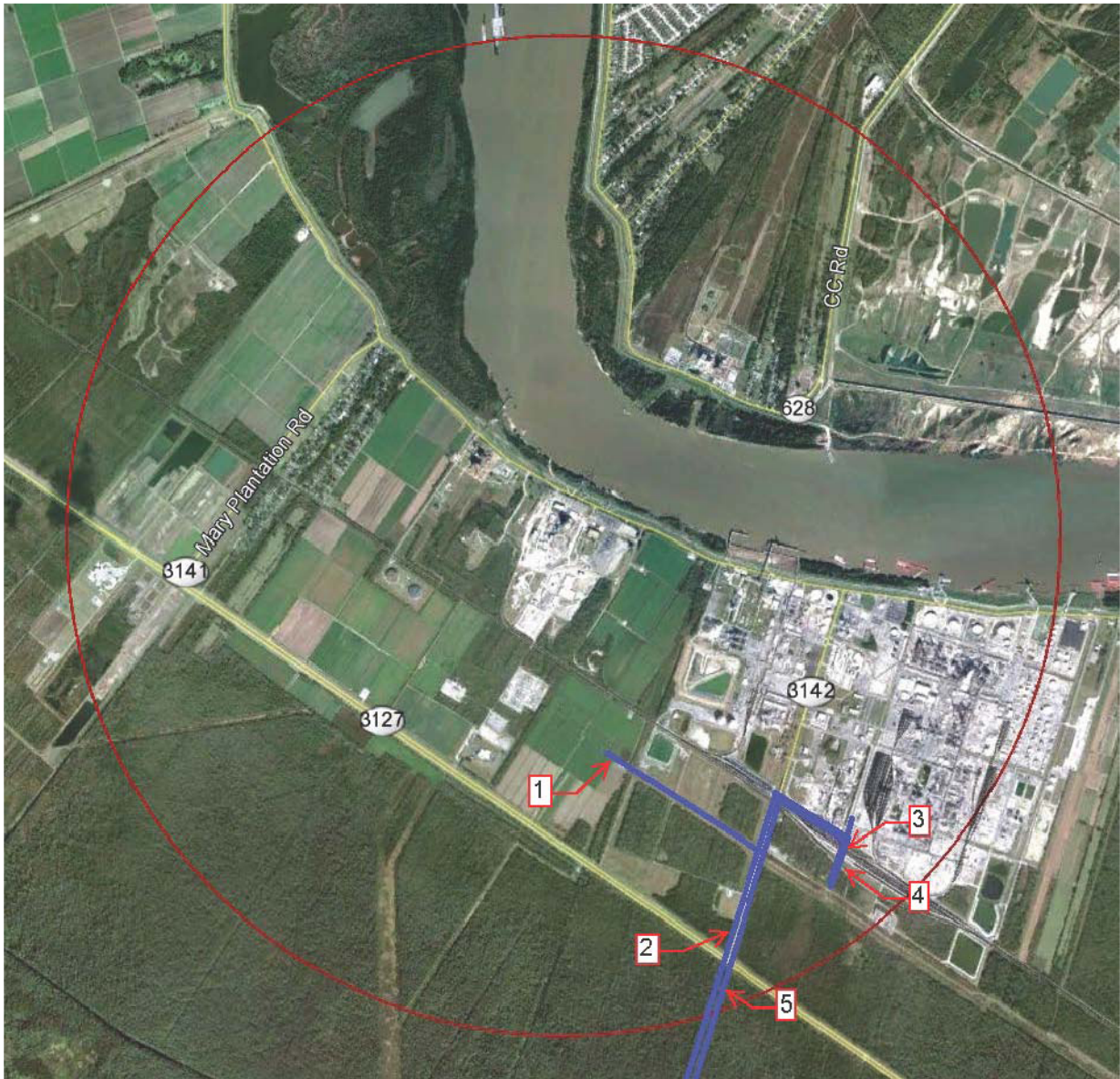


Revision 309 (06/16)

Waterford Steam
Electric Station #3

SHELL OIL AND DCP MIDSTREAM PIPELINES

Figure
2.2-3f

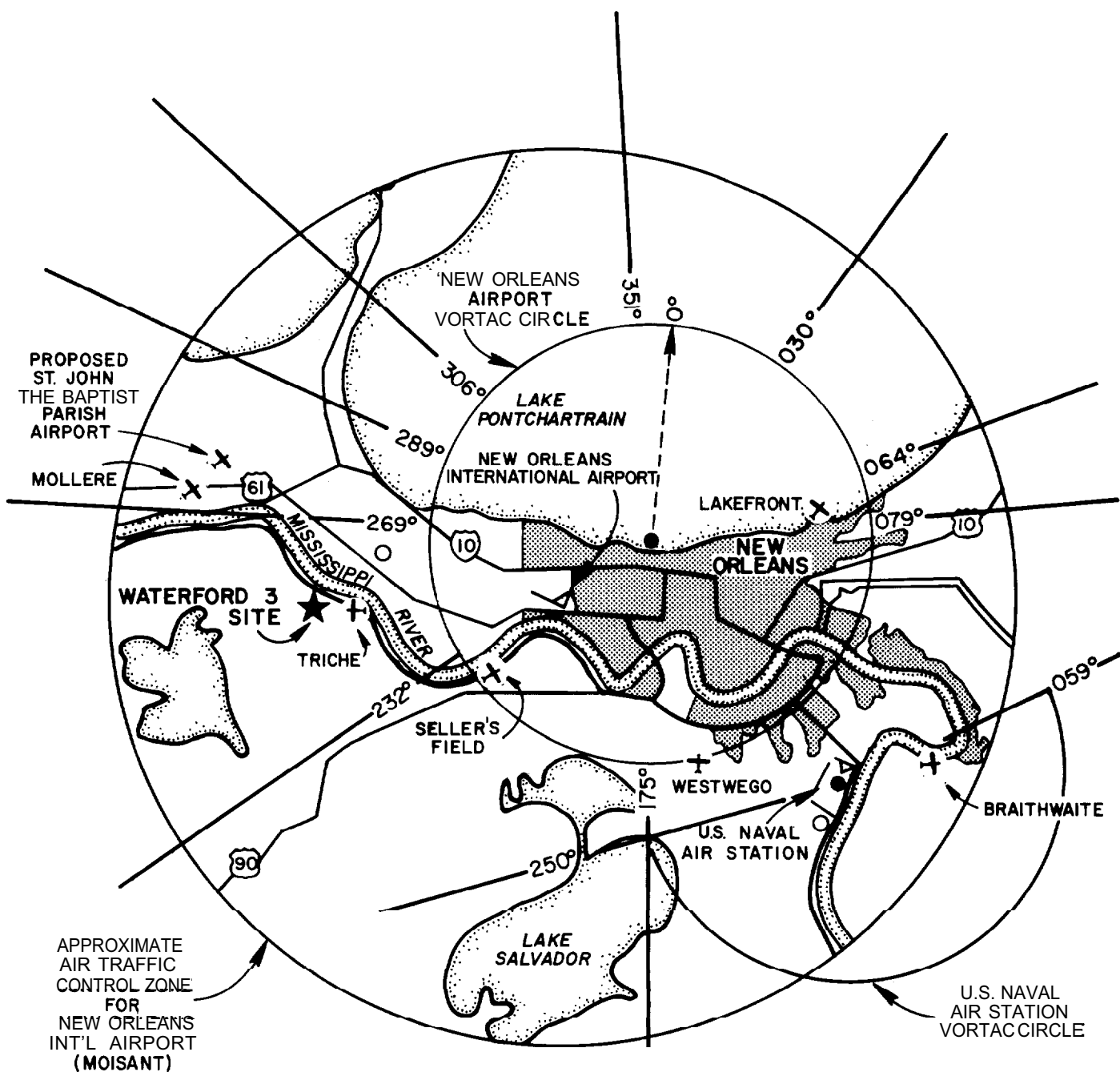


Revision 307 (07/13)

Waterford Steam
Electric Station #3

UCAR PIPELINES

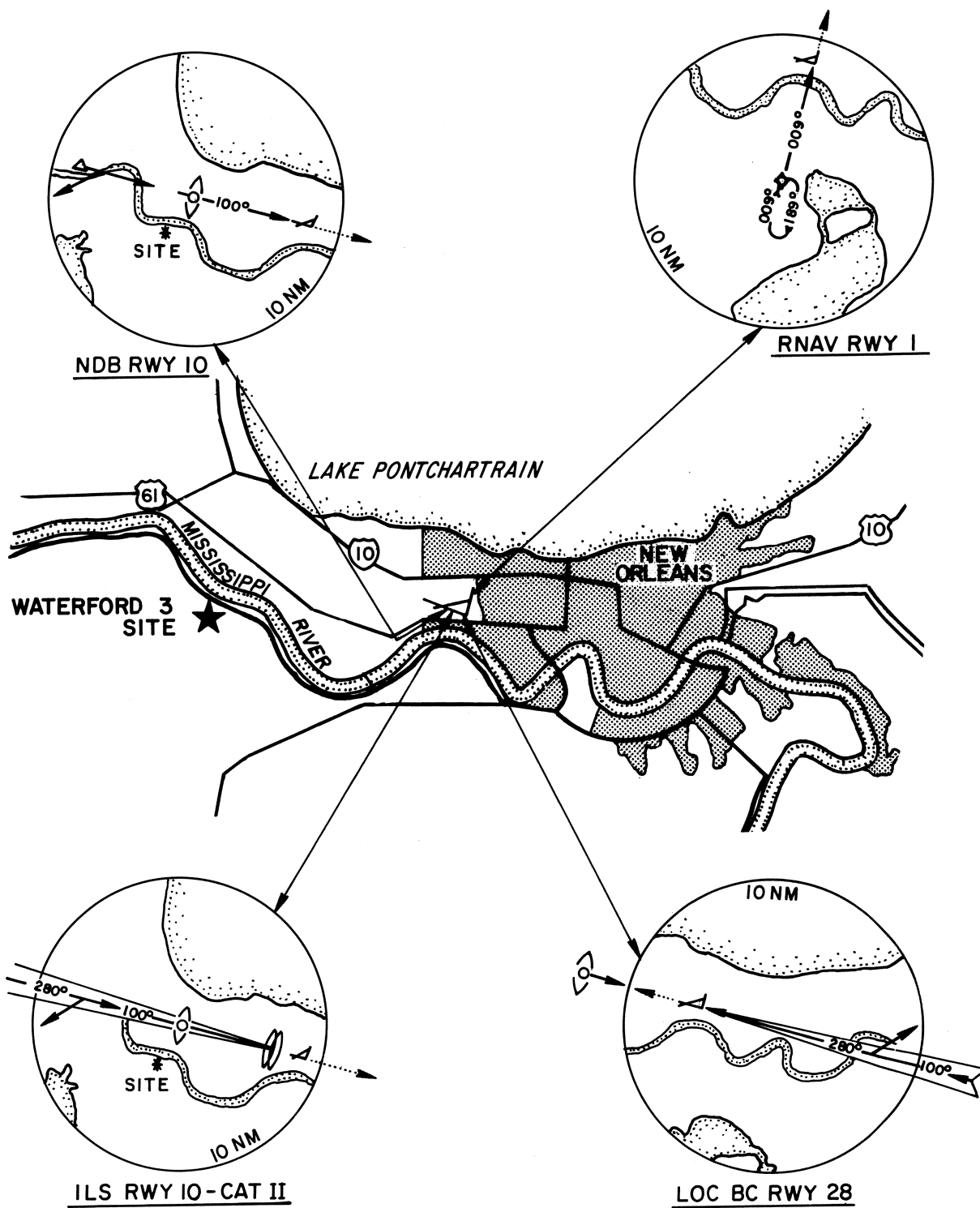
Figure
2.2-3g



LOUISIANA
POWER & LIGHT Co.
Waterford Steam
Electric Station

AIRPORTS AND LOW ALTITUDE
FEDERAL AIRWAYS IN THE VICINITY
OF WATERFORD 3

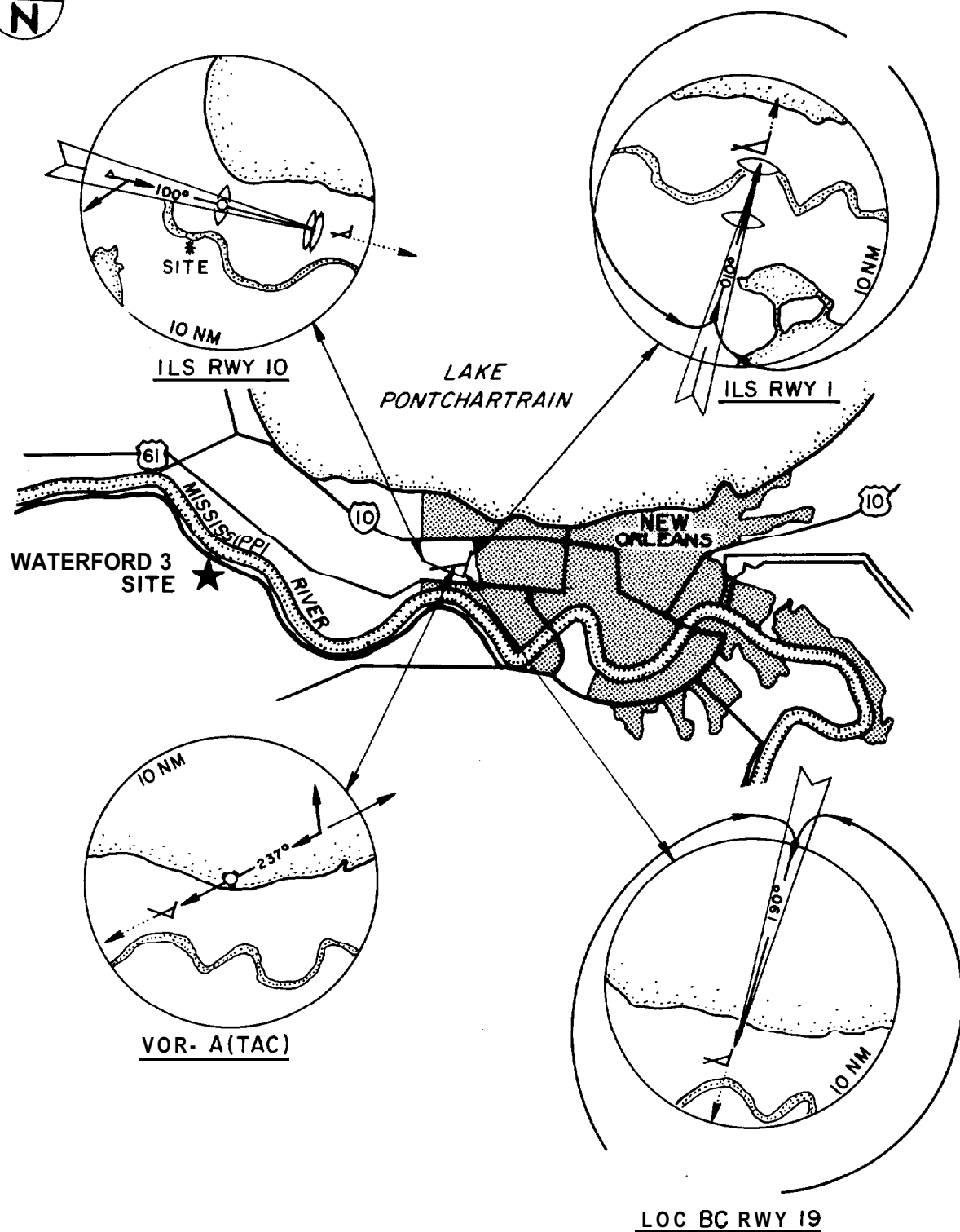
FIGURE
2.2-4



LOUISIANA
POWER & LIGHT Co.
Waterford Steam
Electric Station

LANDING AND APPROACH PATHS-
NEW ORLEANS INTERNATIONAL AIRPORT

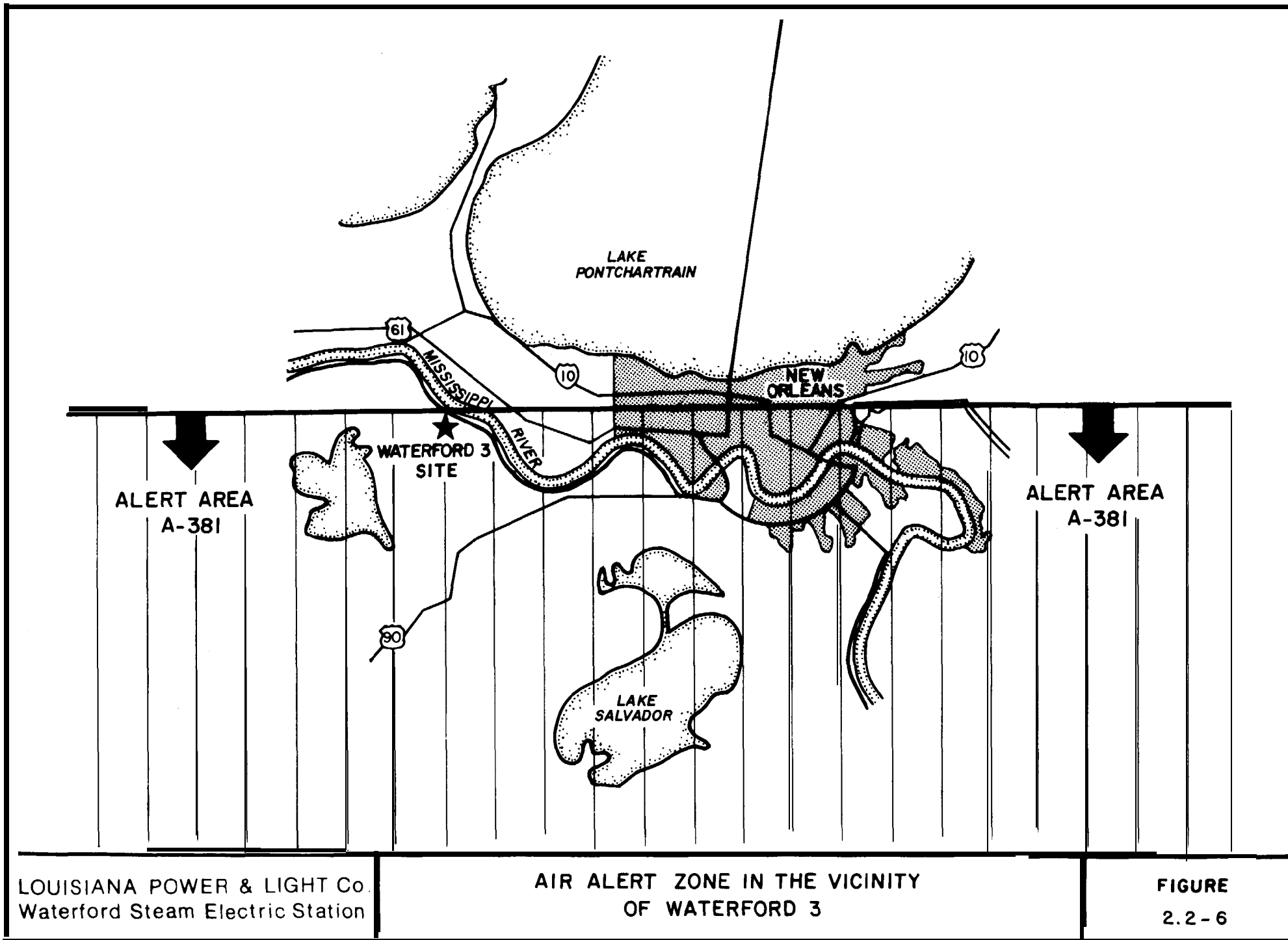
FIGURE
2.2-5A

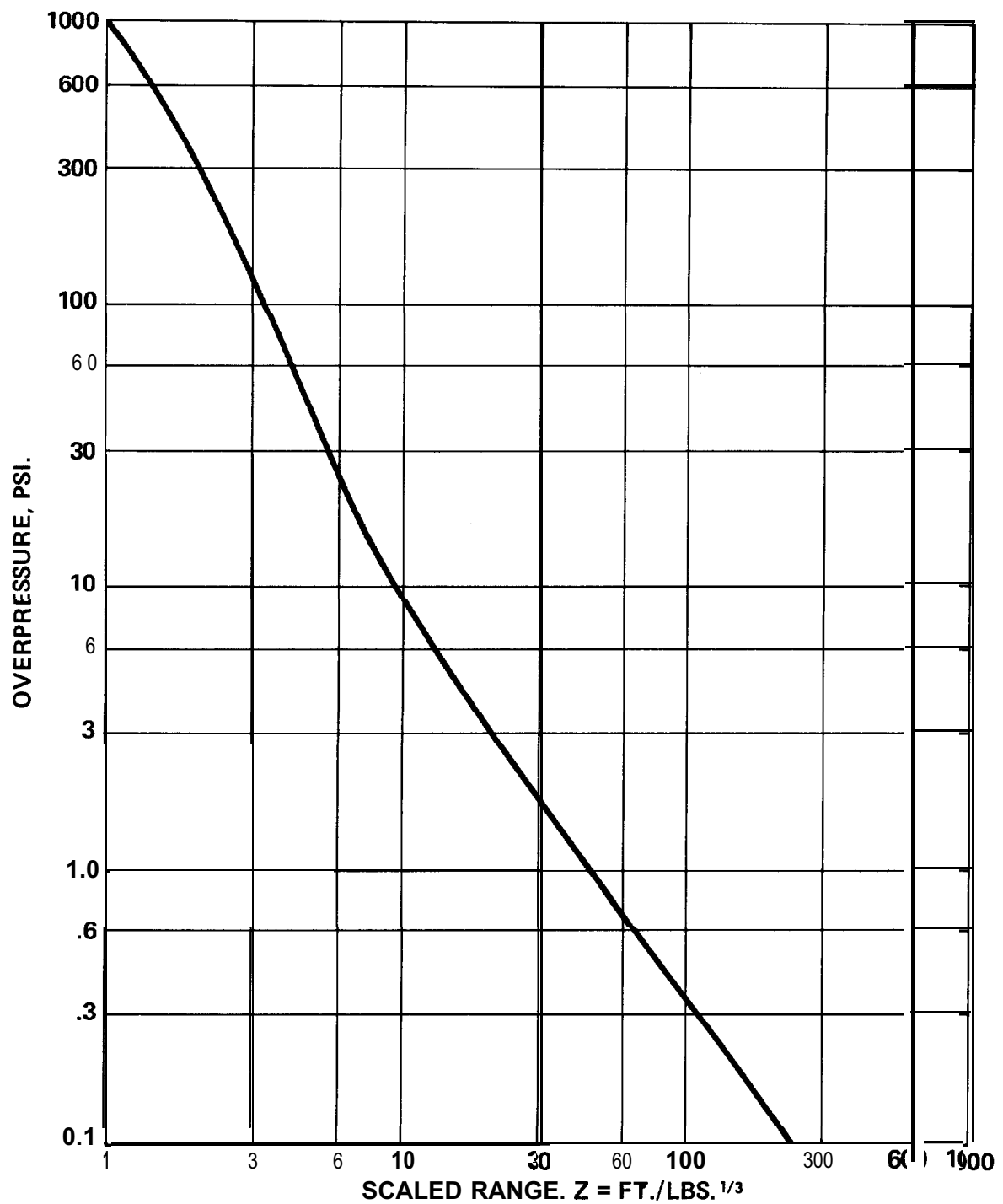


LOUISIANA
POWER & LIGHT Co.
Waterford Steam
Electric Station

LANDING AND APPROACH PATHS-
NEW ORLEANS INTERNATIONAL AIRPORT

FIGURE
2.2-5B

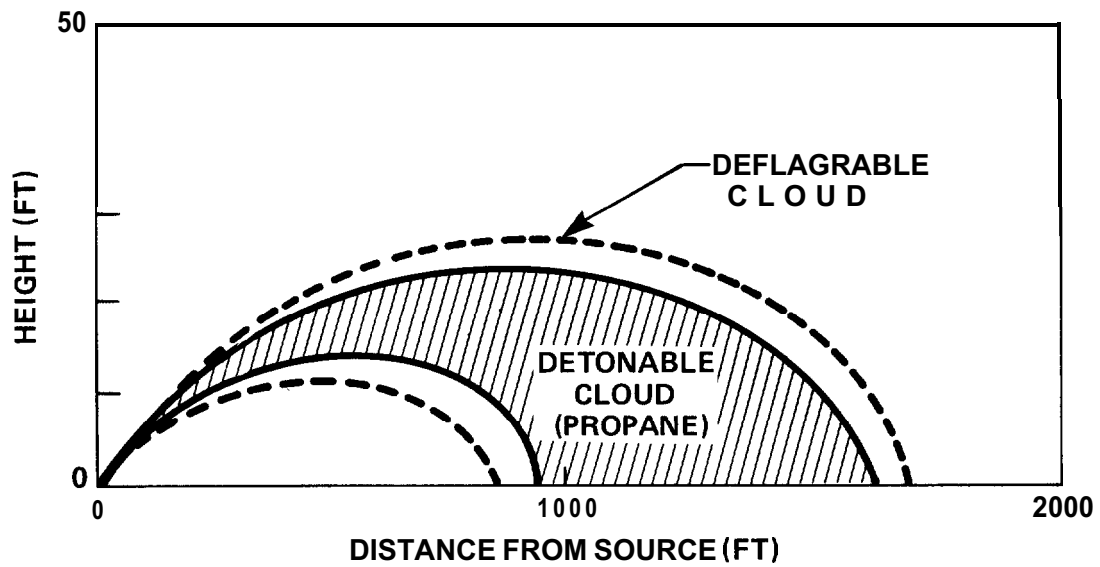
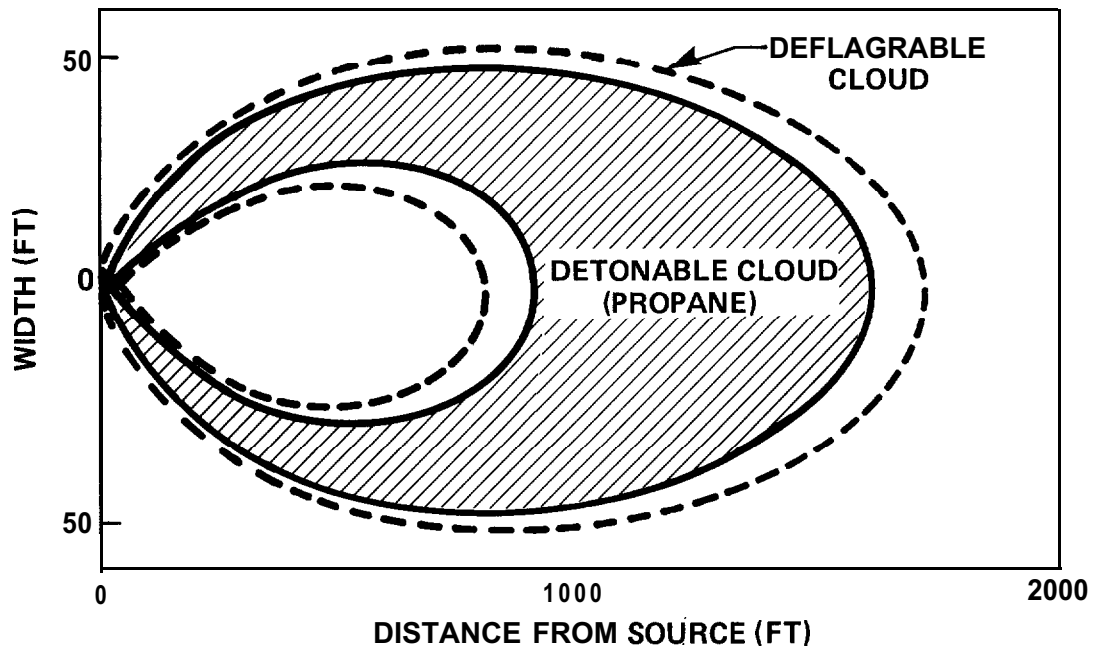


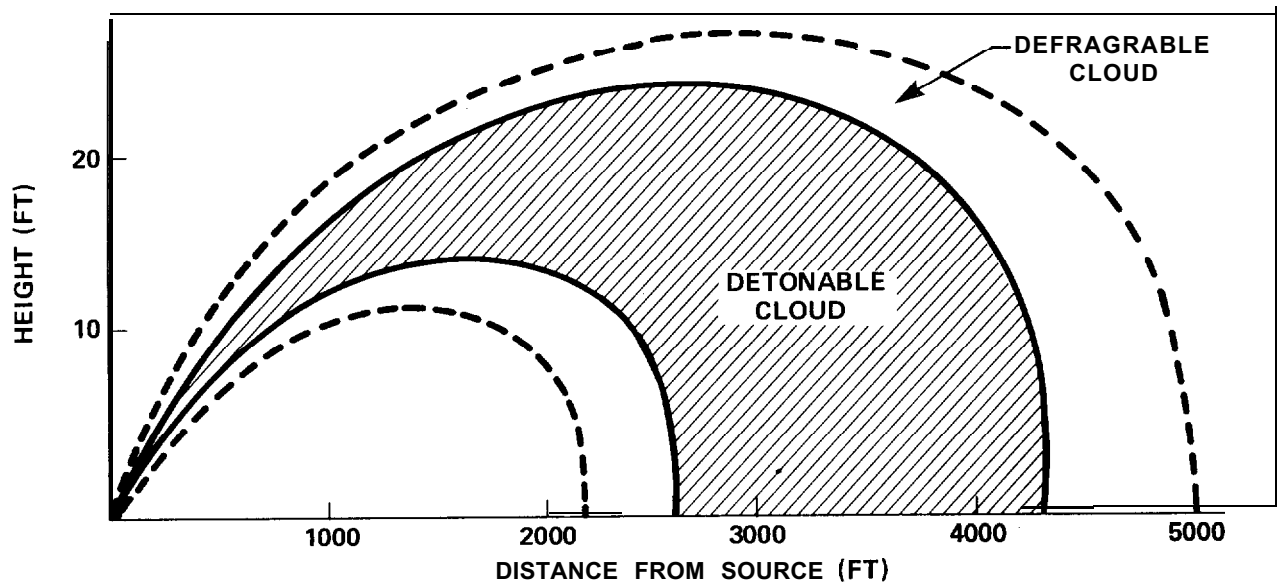
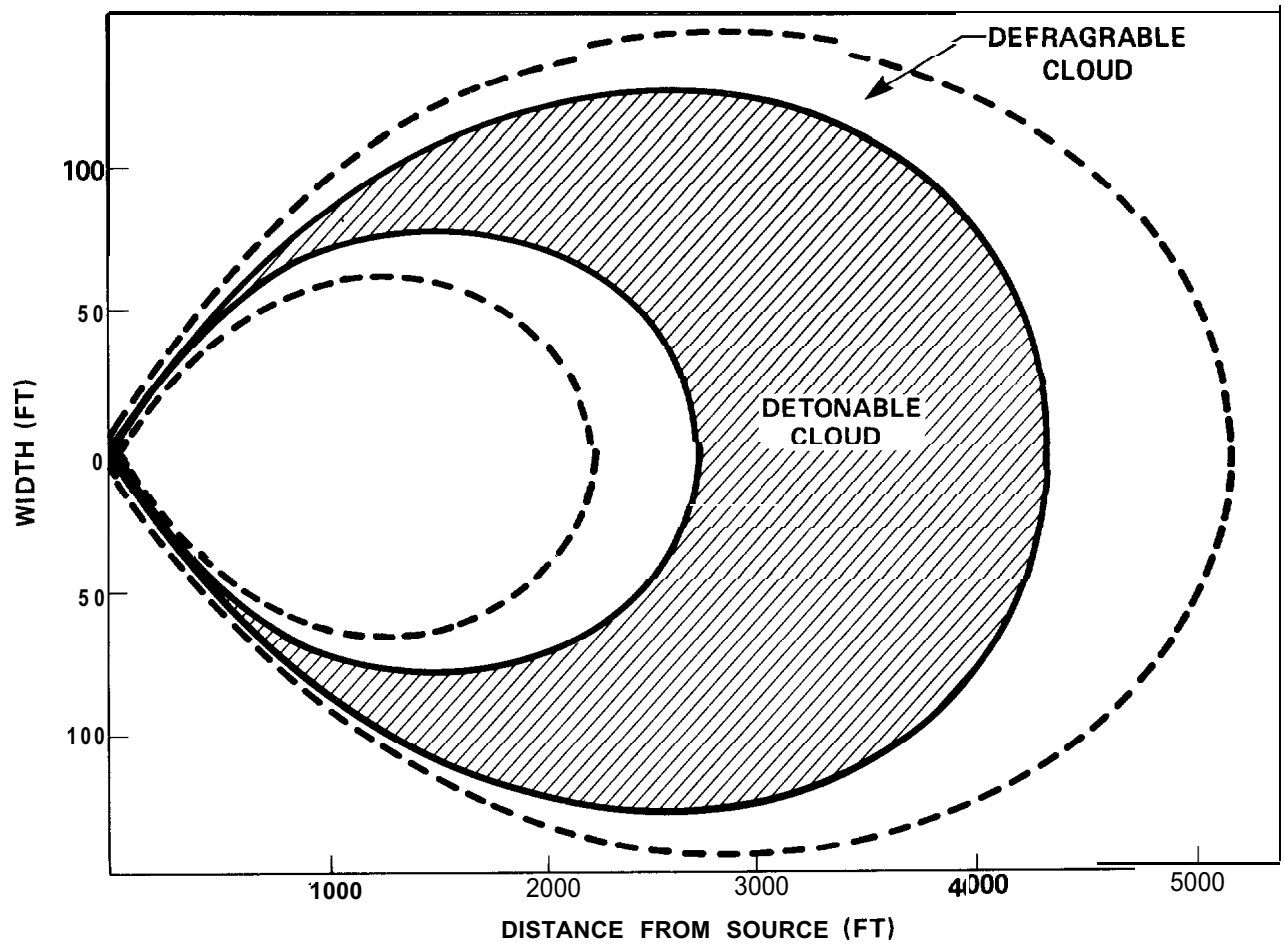


LOUISIANA
POWER & LIGHT CO.
Waterford Steam
Electric Station

OVERPRESSURE VS. SCALED RANGE FOR SURFACE BURST

Figure
2.2-7

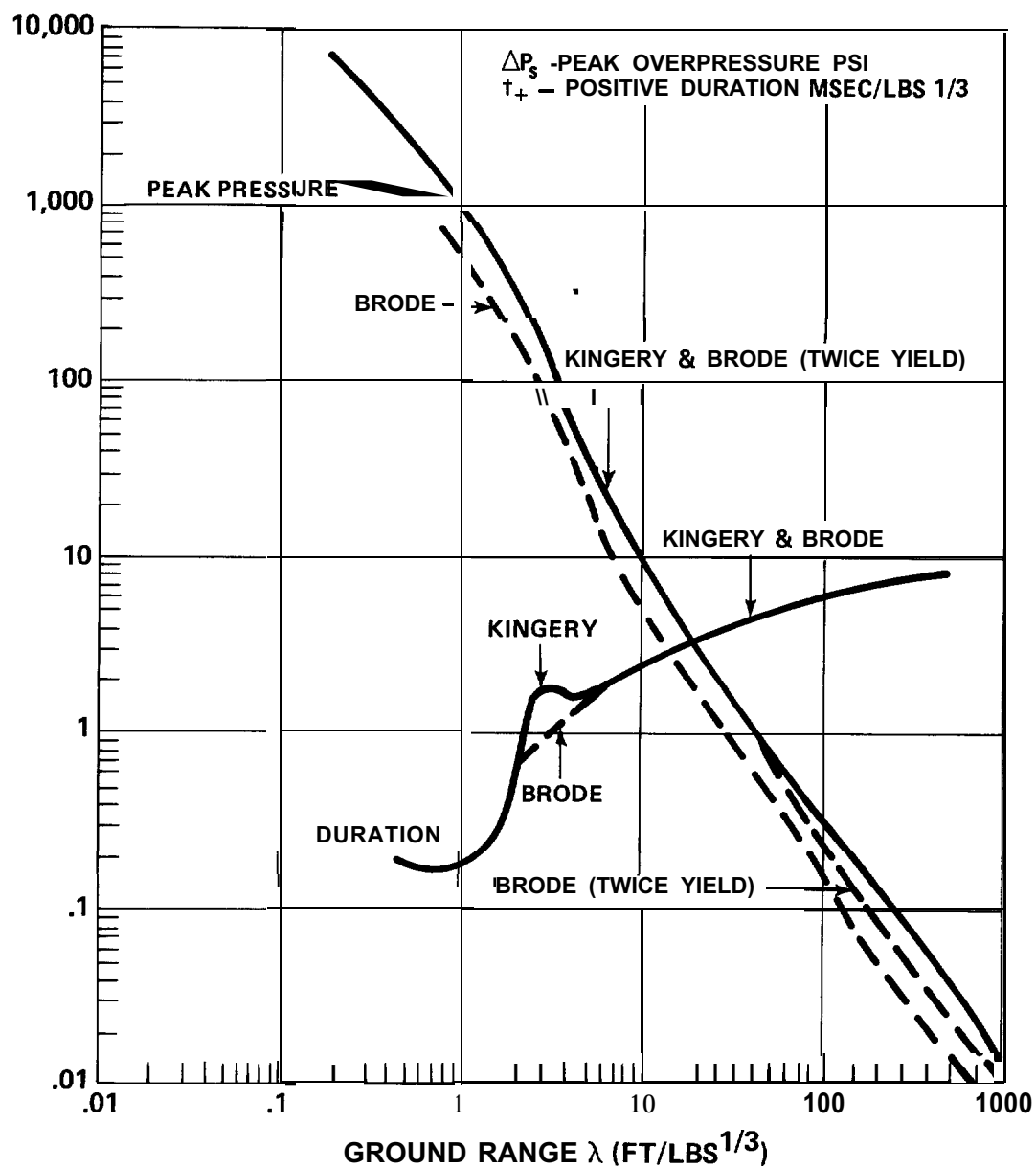


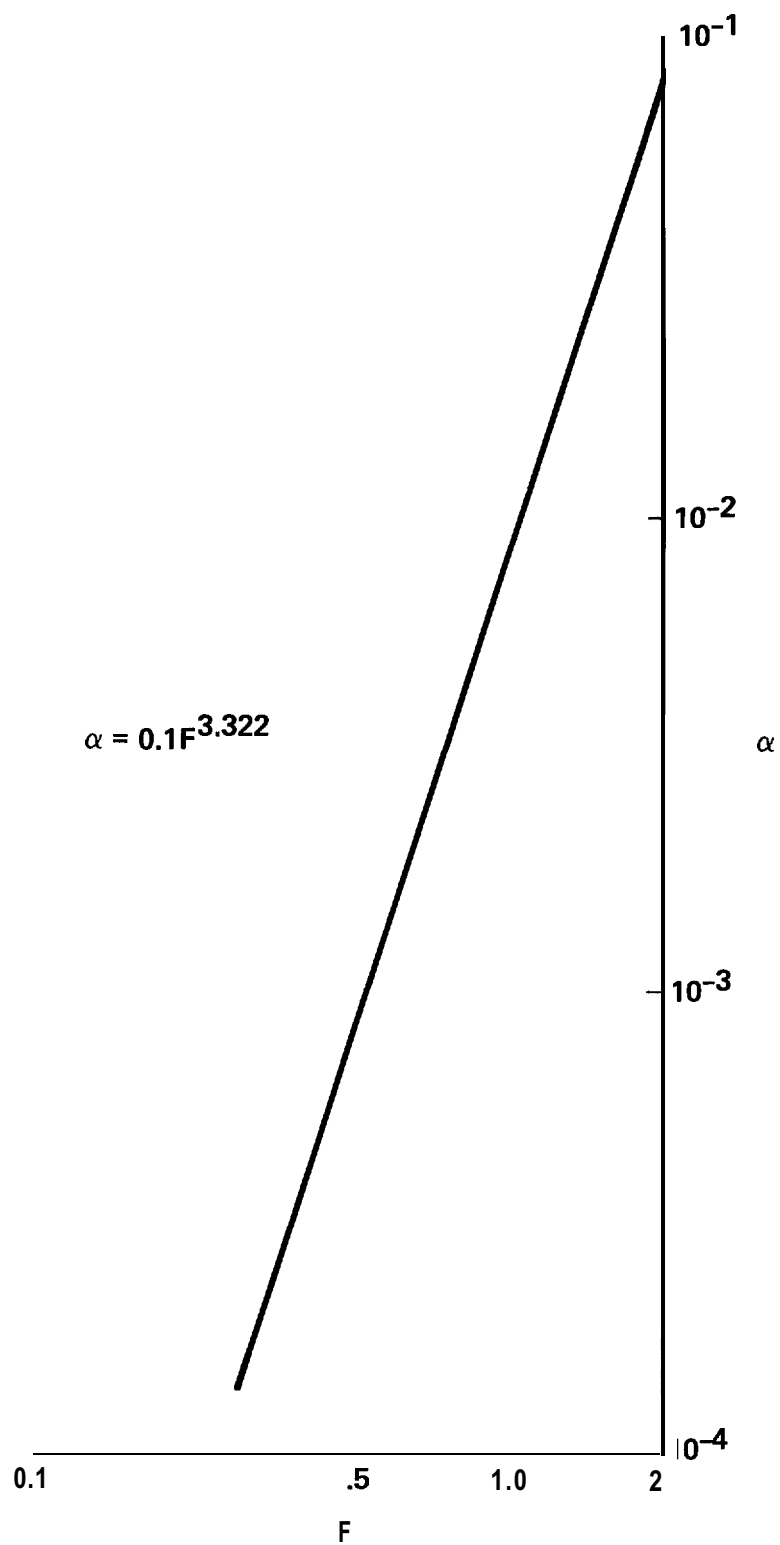


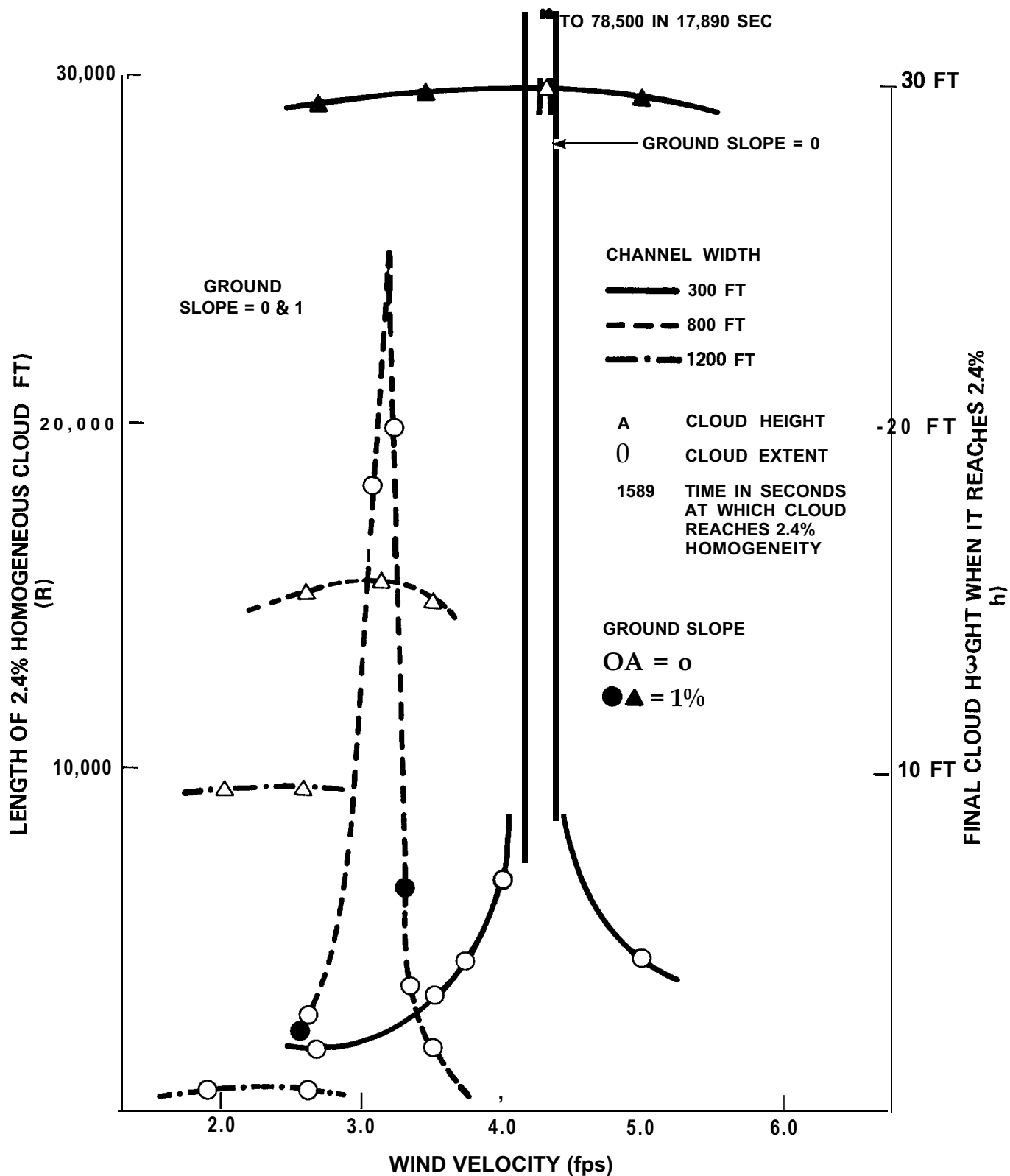
LOUISIANA
POWER & LIGHT CO.
Waterford Steam
Electric Station

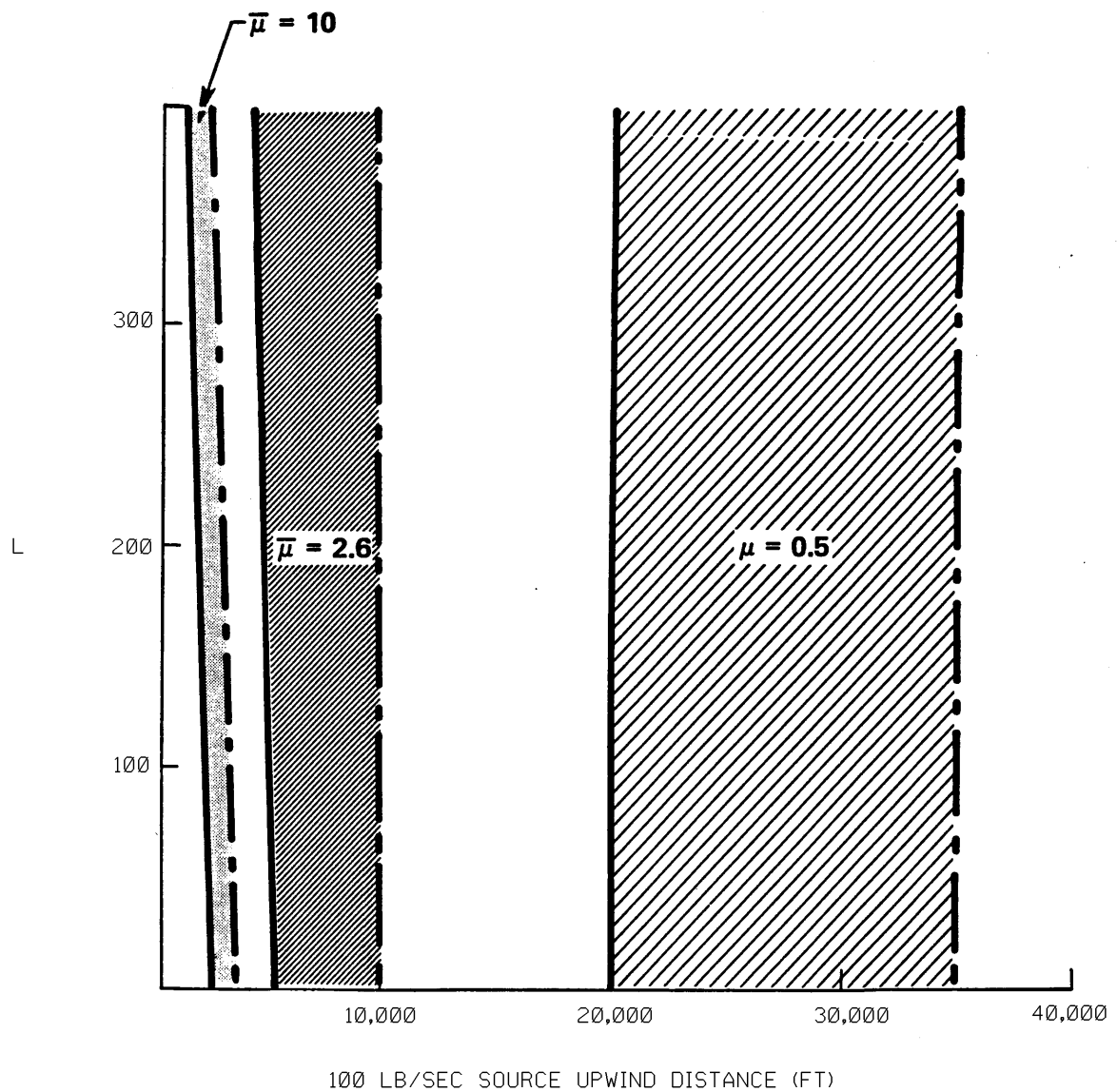
DETONABLE CLOUD FOR 8" UNION CARBIDE LINE

Figure
2.2-9

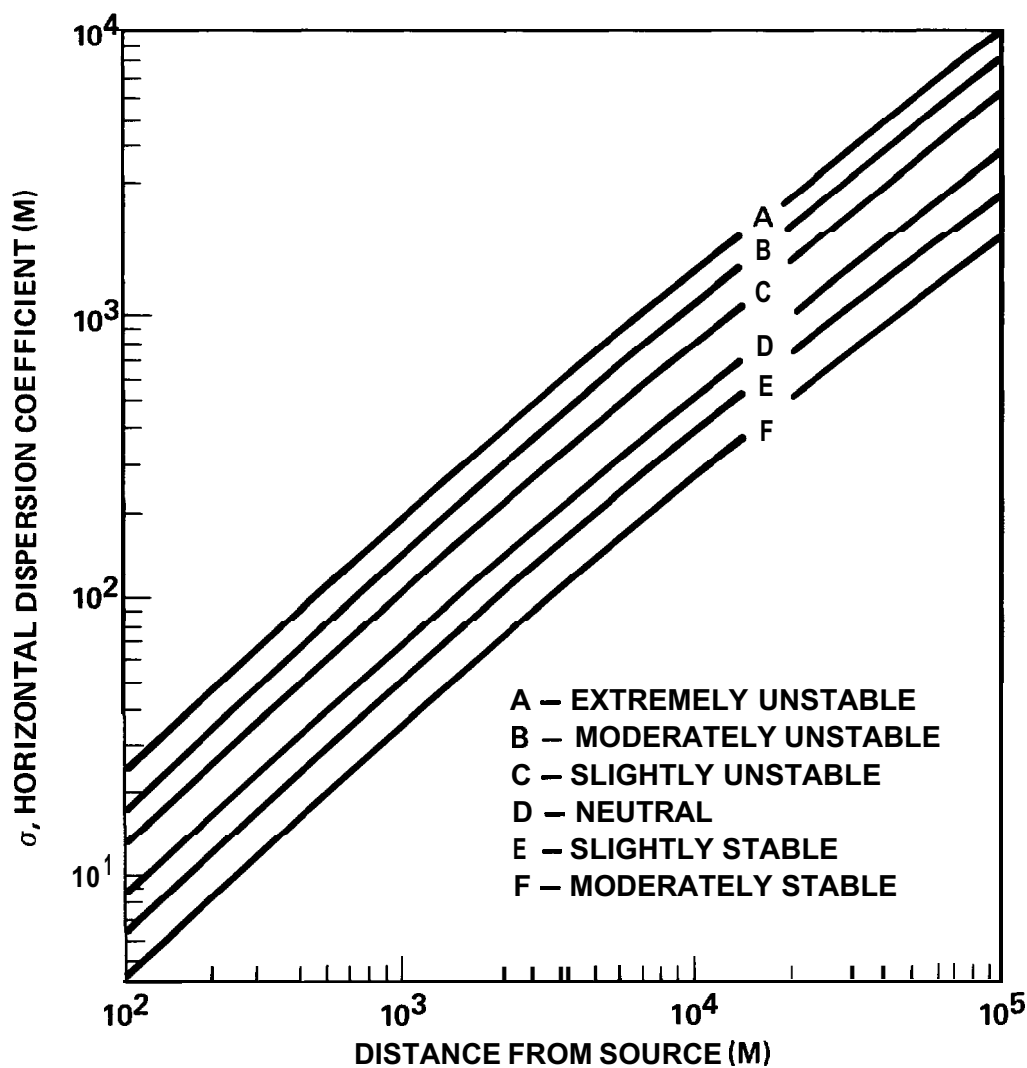


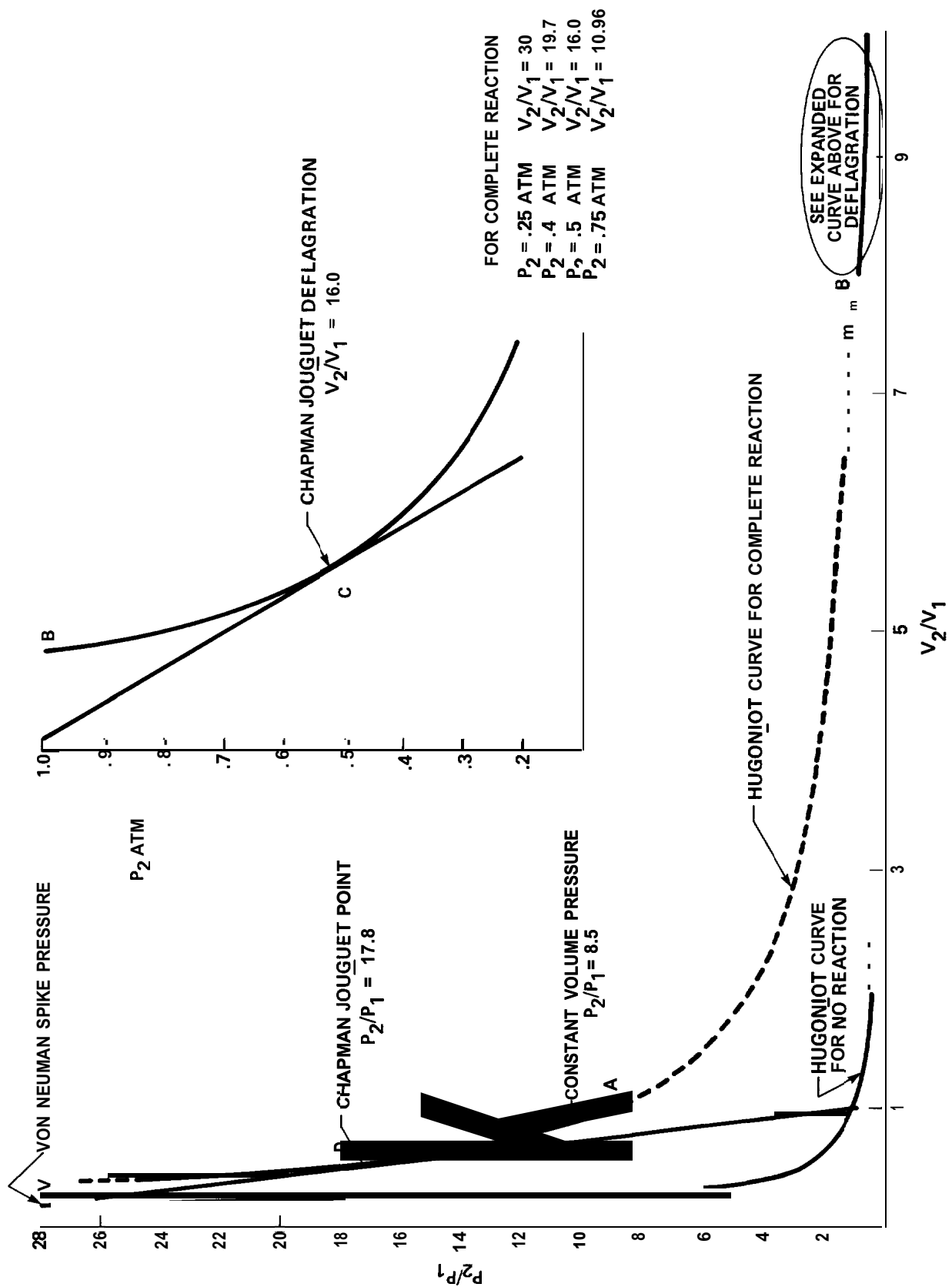


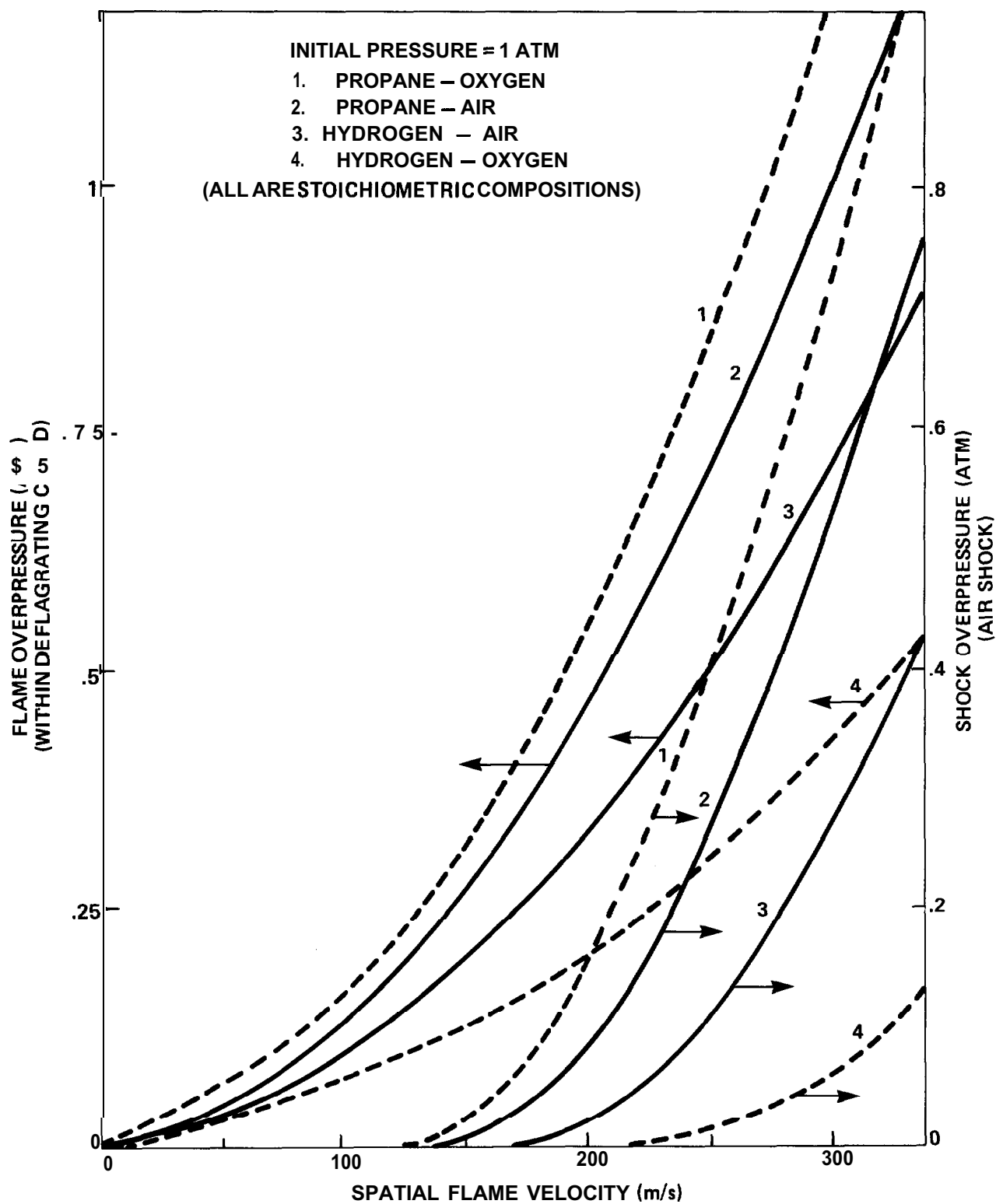


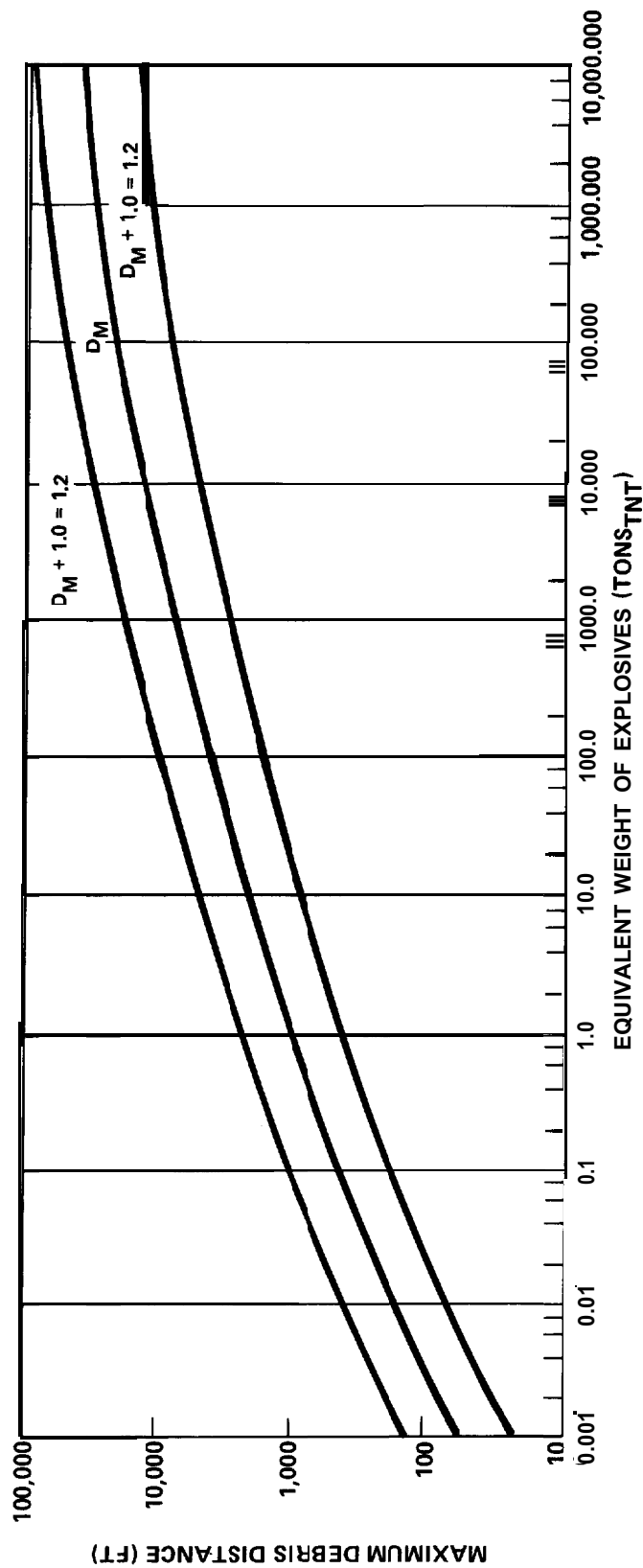


Revision 11-A (02/02)









$$\text{LOC}_{10} D_M = 2.96010.347 \text{ LOG}_{10} W - 0.0161 (\text{LOG}_{10} W)^2$$

STANDARD ERROR = ± 0.392 (LOGARITHMIC VALUE)

= $\div 2.47$ (ARITHMETIC VALUE)

CORRELATION COEFFICIENT = 0.67

LOUISIANA
POWER & LIGHT CO.
Waterford Steam
Electric Station

QUADRATIC REGRESSION LINE
MAXIMUM DEBRIS DISTANCE VS. EQUIVALENT YIELD

Figure
2.2-17