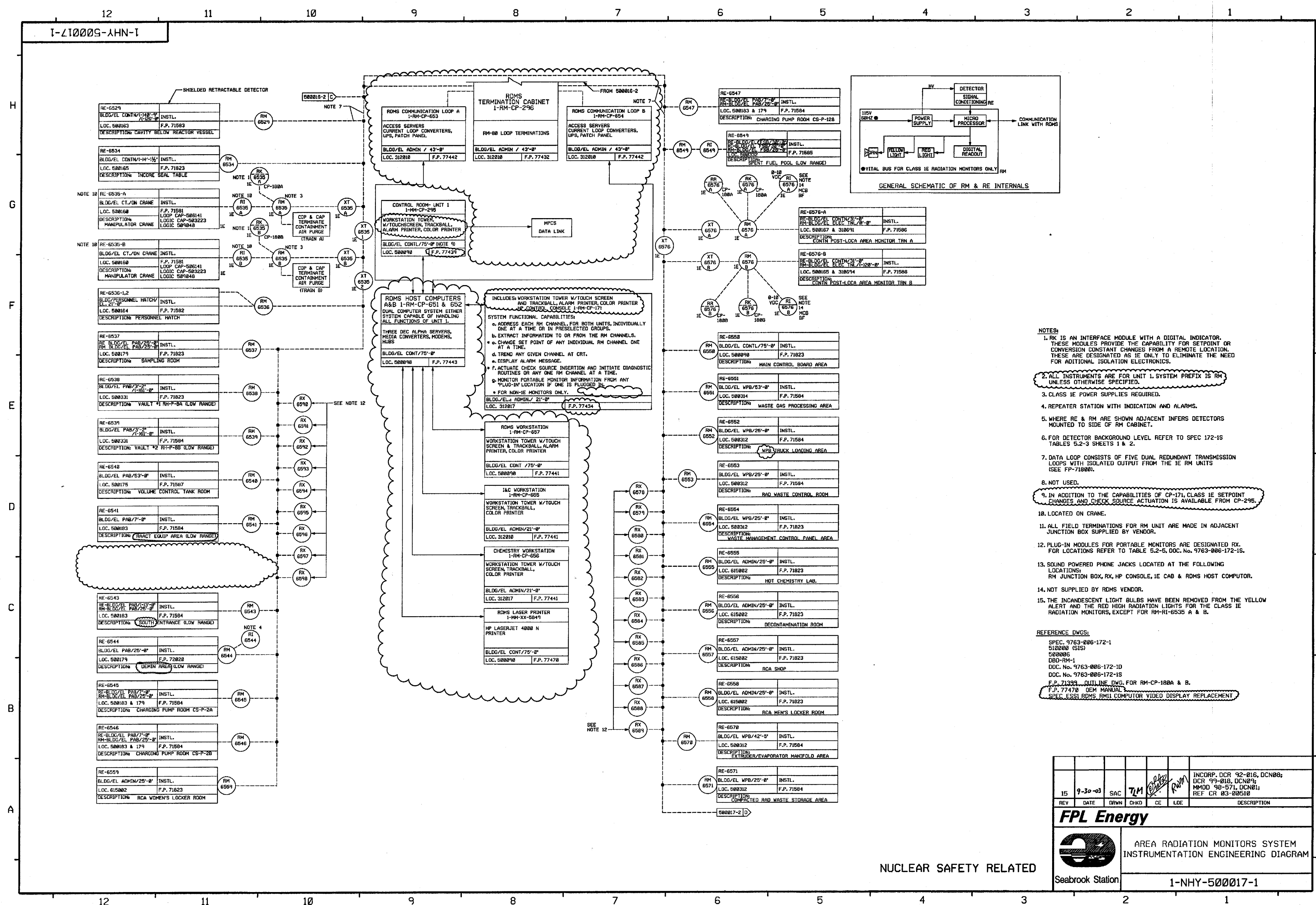
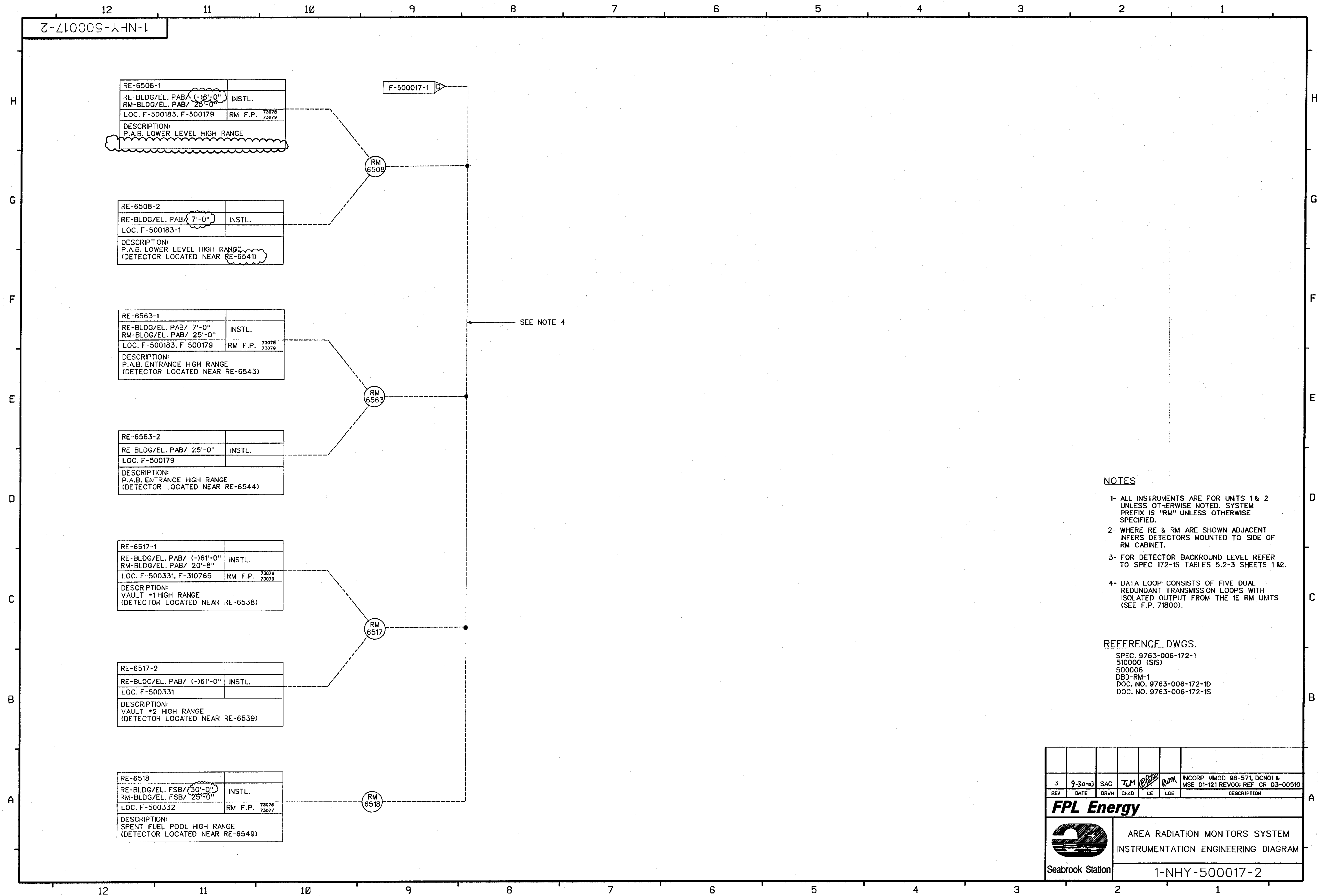
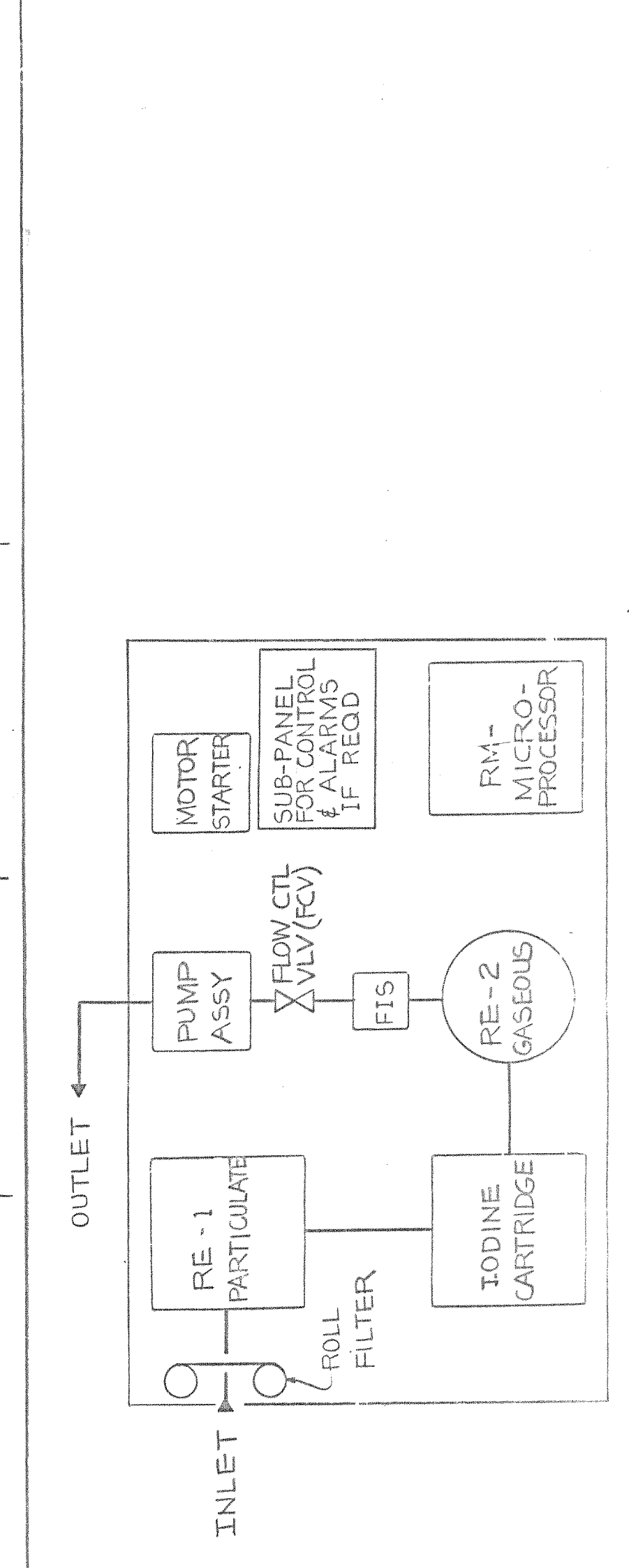


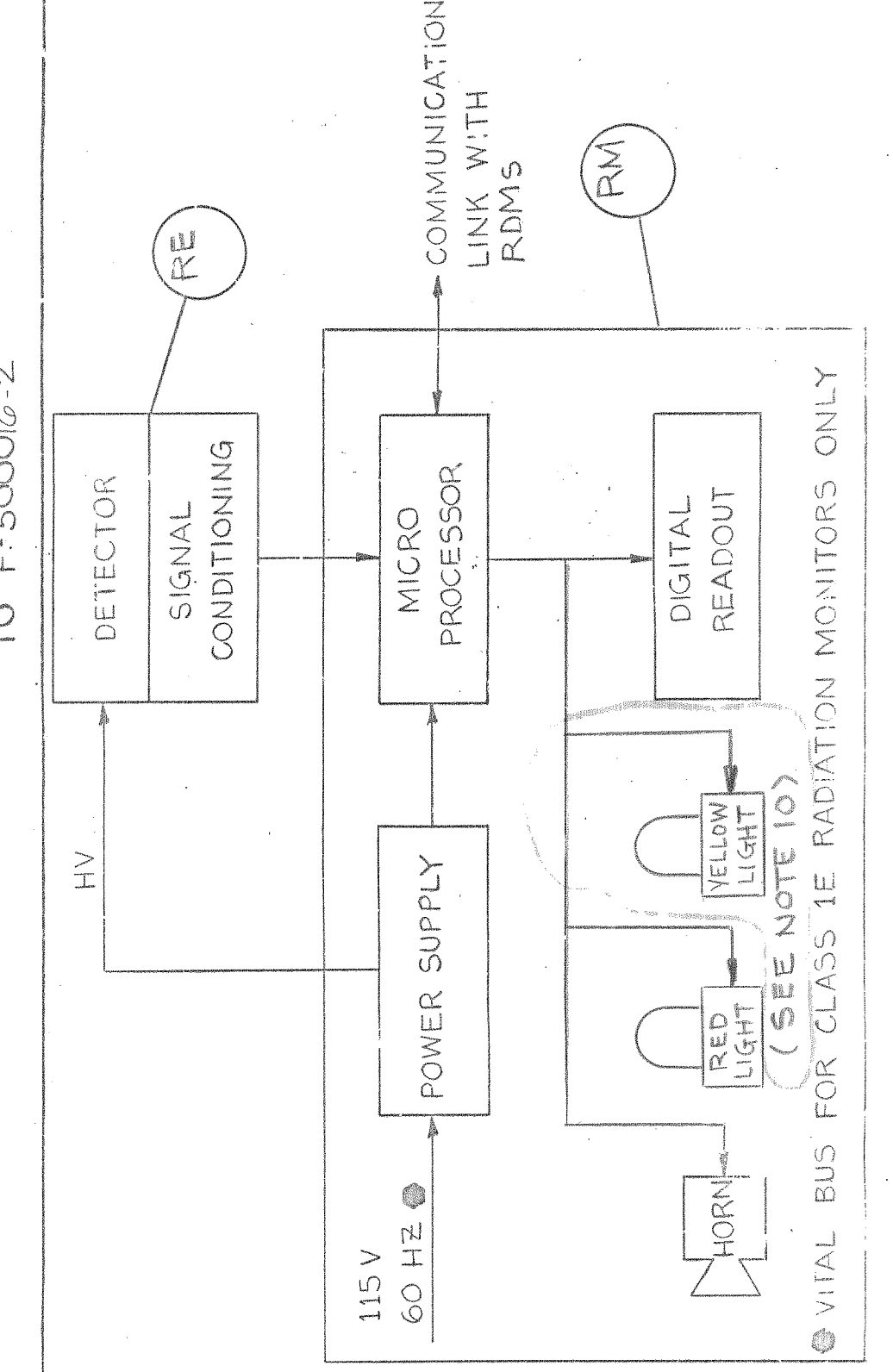
SECURITY-RELATED INFORMATION – WITHHELD UNDER 5 U.S.C. SECTION 552(b)(4) AND 5 U.S.C. SECTION 552(b)(7)(F)







TYPICAL AIRBORNE PARTICULATE
GASEOUS RAD MON SKID



GENERAL SCHEMATIC OF RM & RE INTERNALS

ISSUED-FOR-CONSTRUCTION

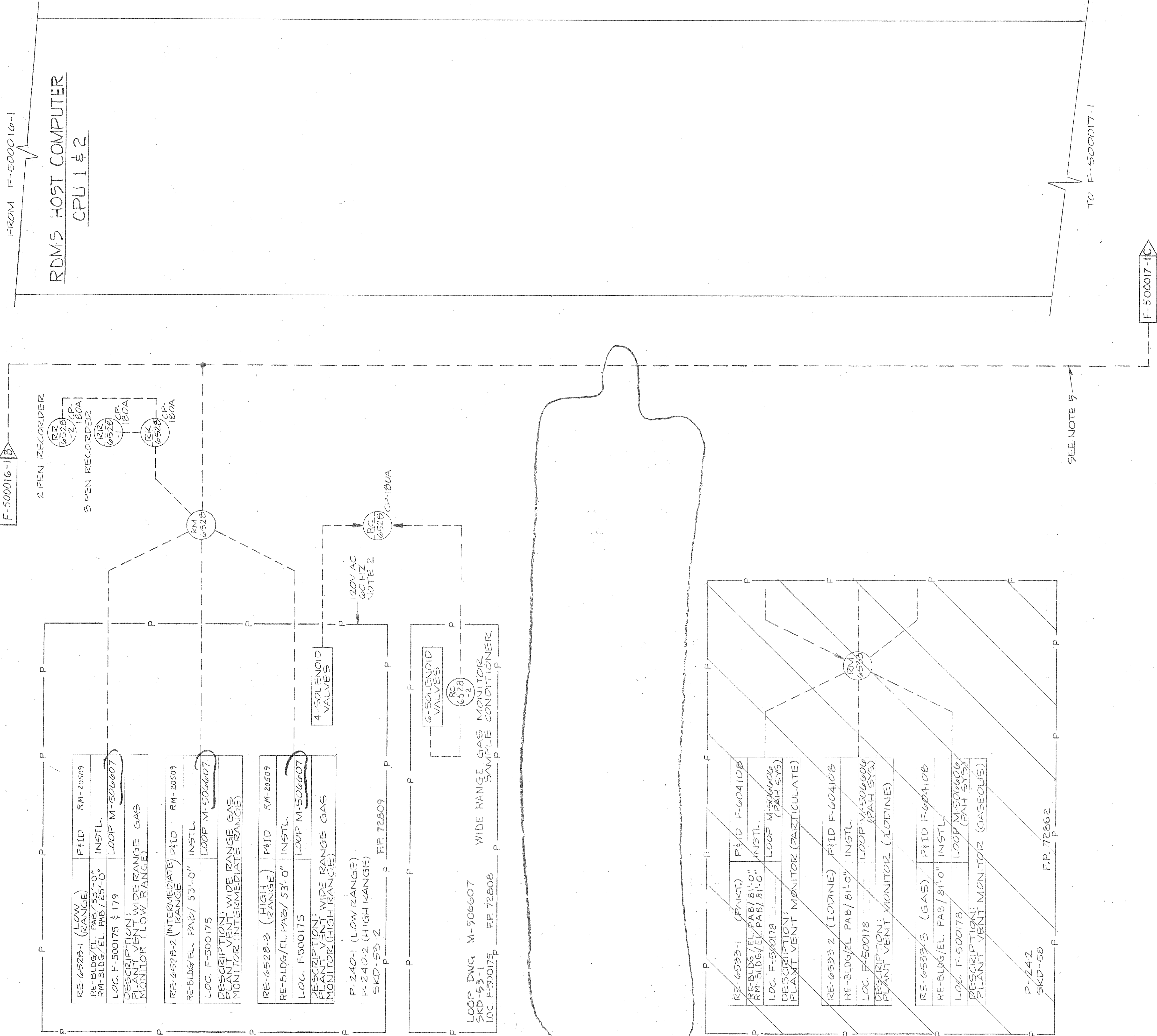
NUCLEAR SAFETY RELATED

AIRBORNE RADIATION MONITORING SYSTEM
INSTRUMENTATION ENGINEERING DIAGRAM

North Atlantic
Energy Service Corporation

REV.	DATE	BY	CHKD	CE	LOE	DESCRIPTION
11	4/16/86	cm		APV	280	9763-F-544016-1 SUPERCEDES U...&C DWG.

GASEOUS RAD MON SKID



REFERENCE DWG'S.

SPEC. 9763-006-172-1
M-510000 (SIS)
M-500006 (GEN. INFO. SHEETS)
D&D-RM-1

F.P. 72848 150 KINETIC NOZZLE - UNIT 1
F.P. 72849 150 KINETIC NOZZLE - UNIT 1
F.P. 72847 150 KINETIC NOZZLE - UNIT 2
F.P. 72857 150 KINETIC NOZZLE - UNIT 2

NOTES

1. RK IS AN INTERFACE MODULE WITH A DIGITAL INDICATOR. THESE MODULES PROVIDE THE CAPABILITY FOR SETPOINT OR CONVERSION CONSTANT CHANGES FROM A REMOTE LOCATION.

2. CLASS 1E POWER SUPPLIES REQUIRED.
3. ALL INSTRUMENTS ARE FOR UNITS 1&2 UNLESS OTHERWISE NOTED. SYSTEM PREFIX IS "RM" UNLESS OTHERWISE SPECIFIED.

4. FOR DETECTOR BACKGROUND RADIATION MONITORING SPEC 172-15 TABLE 52.4 A & B.
5. DATA LOOP CONSISTS OF FIVE DUAL REDUNDANT TRANSMISSION LOOPS WITH ISOLATED OUTPUT FROM THE 1E RM UNITS (SEE F-71800).
6. ALL FIELD TERMINATIONS FOR RM UNIT ARE MADE IN ADJACENT JUNCTION BOX SUPPLIED BY VENDOR.

ISSUED FOR CONSTRUCTION

AIRBORNE RADIATION MONITORING SYSTEM
INSTRUMENTATION ENGINEERING DIAGRAM

North Atlantic
Energy Service Corporation
Seabrook Station

1-NHY-500016-2

REV	DATE	DESCRIPTION	BY	CHKD	DATE	DESCRIPTION	BY	CHKD	DATE	DESCRIPTION	BY	CHKD
1	12-11-84	REVISED TO ADD RM-26509 TO LOOP M-506607	RM	RM	12-11-84	REVISED TO ADD RM-26509 TO LOOP M-506607	RM	RM	12-11-84	REVISED TO ADD RM-26509 TO LOOP M-506607	RM	RM
2	12-11-84	REVISED TO ADD RM-26509 TO LOOP M-506607	RM	RM	12-11-84	REVISED TO ADD RM-26509 TO LOOP M-506607	RM	RM	12-11-84	REVISED TO ADD RM-26509 TO LOOP M-506607	RM	RM
3	12-11-84	REVISED TO ADD RM-26509 TO LOOP M-506607	RM	RM	12-11-84	REVISED TO ADD RM-26509 TO LOOP M-506607	RM	RM	12-11-84	REVISED TO ADD RM-26509 TO LOOP M-506607	RM	RM
4	12-11-84	REVISED TO ADD RM-26509 TO LOOP M-506607	RM	RM	12-11-84	REVISED TO ADD RM-26509 TO LOOP M-506607	RM	RM	12-11-84	REVISED TO ADD RM-26509 TO LOOP M-506607	RM	RM

REV	DATE	DESCRIPTION	BY	CHKD	DATE	DESCRIPTION	BY	CHKD	DATE	DESCRIPTION	BY	CHKD
1	12-11-84	REVISED TO ADD RM-26509 TO LOOP M-506607	RM	RM	12-11-84	REVISED TO ADD RM-26509 TO LOOP M-506607	RM	RM	12-11-84	REVISED TO ADD RM-26509 TO LOOP M-506607	RM	RM
2	12-11-84	REVISED TO ADD RM-26509 TO LOOP M-506607	RM	RM	12-11-84	REVISED TO ADD RM-26509 TO LOOP M-506607	RM	RM	12-11-84	REVISED TO ADD RM-26509 TO LOOP M-506607	RM	RM
3	12-11-84	REVISED TO ADD RM-26509 TO LOOP M-506607	RM	RM	12-11-84	REVISED TO ADD RM-26509 TO LOOP M-506607	RM	RM	12-11-84	REVISED TO ADD RM-26509 TO LOOP M-506607	RM	RM
4	12-11-84	REVISED TO ADD RM-26509 TO LOOP M-506607	RM	RM	12-11-84	REVISED TO ADD RM-26509 TO LOOP M-506607	RM	RM	12-11-84	REVISED TO ADD RM-26509 TO LOOP M-506607	RM	RM