

NOTES
1. FOR GENERAL NOTES SEE DMG. 310020.
2. THE SYSTEM PREFIX IS "EDE" UNLESS OTHERWISE NOTED. ALL EQUIPMENT & DEVICES THAT HAVE TAG NOS. ARE TO BE IDENTIFIED BY A SYSTEM PREFIX. A SYSTEM PREFIX IS REQUIRED FOR ALL EQUIPMENT & DEVICES THAT HAVE TAG NOS. ON UNDERVOLTAGE SEE BUS 1-E6 DMG. 310028
3. FOR TRIPPING OF SPECIFIC LOADS ON UNDERVOLTAGE SEE BUS 1-E6 DMG. 310028
⊗ COMPRESSION TYPE CABLE SPLICE

REV	DATE	DSGN	DRWN	CHKD	CE	LDE	DESCRIPTION
17	3/16/94		RMC	JL/T	JL/T	RHG	INCORP. DER 98-0029 DCM 80
16	4/19/94		RMC	CMF	CMF	CMF	INCORP. DER 93-001 DCM 80 & MMDD 98-532 DCM 80
15	11/20/95		NFF	VCP	VCP	VCP	INCORP. DER 94-012, CA-01
14	12/29/95		NFF	JLM	TPN	RJL	INCORP. MMDD 92-517 CA-01
13	4/3/97		NLM	AMR	TPN	RHG	RETRAIN ON CADDDO TECHNICAL CHANGES.

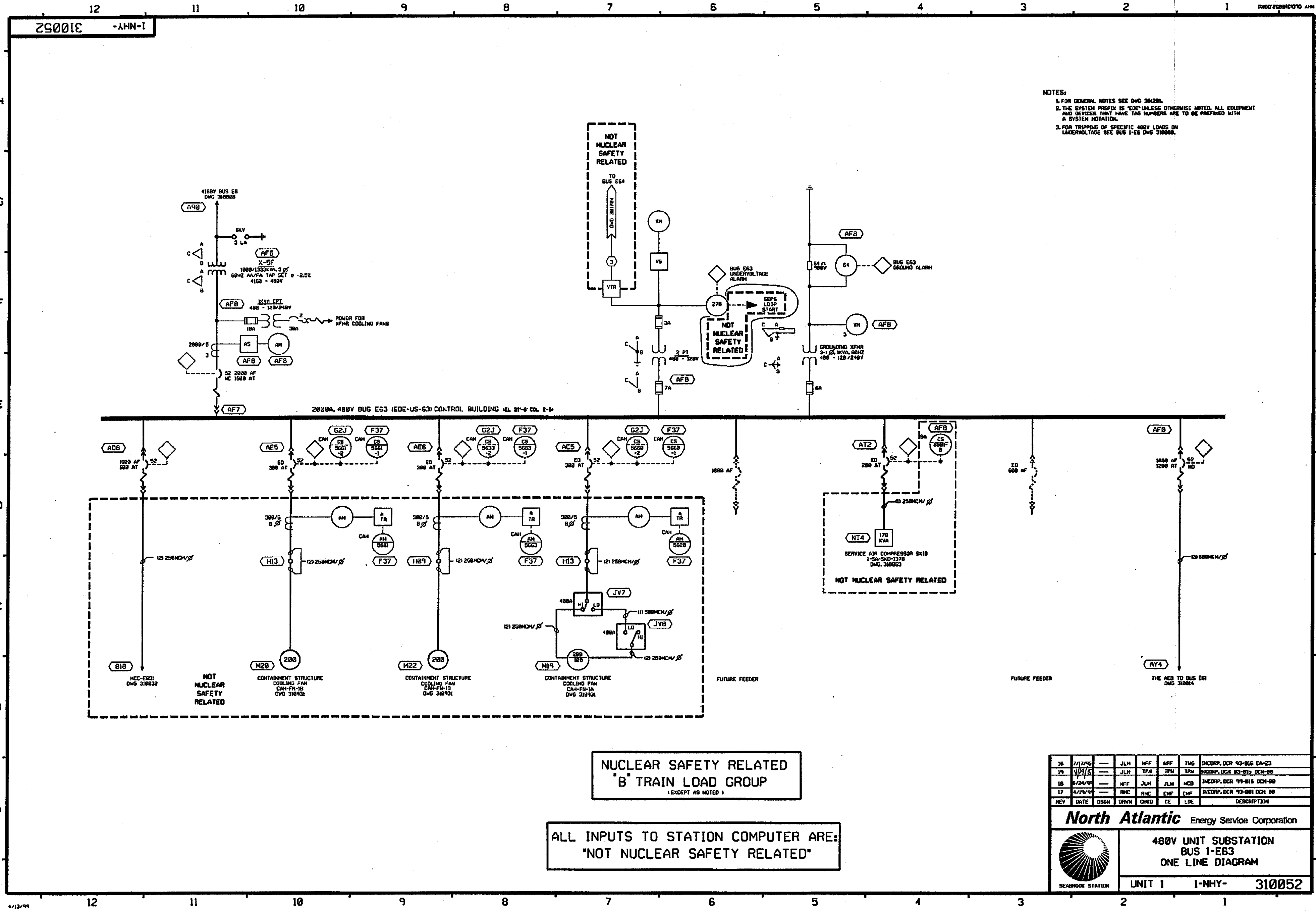
North Atlantic Energy Service Corporation

480V UNIT SUBSTATION
BUSES 1-E61 & 1-E62
ONE LINE DIAGRAM

UNIT 1 1-NHY-310014

NUCLEAR SAFETY RELATED
"B" TRAIN LOAD GROUP
(EXCEPT AS NOTED)


ALL INPUTS TO STATION COMPUTER ARE:
"NOT NUCLEAR SAFETY RELATED"



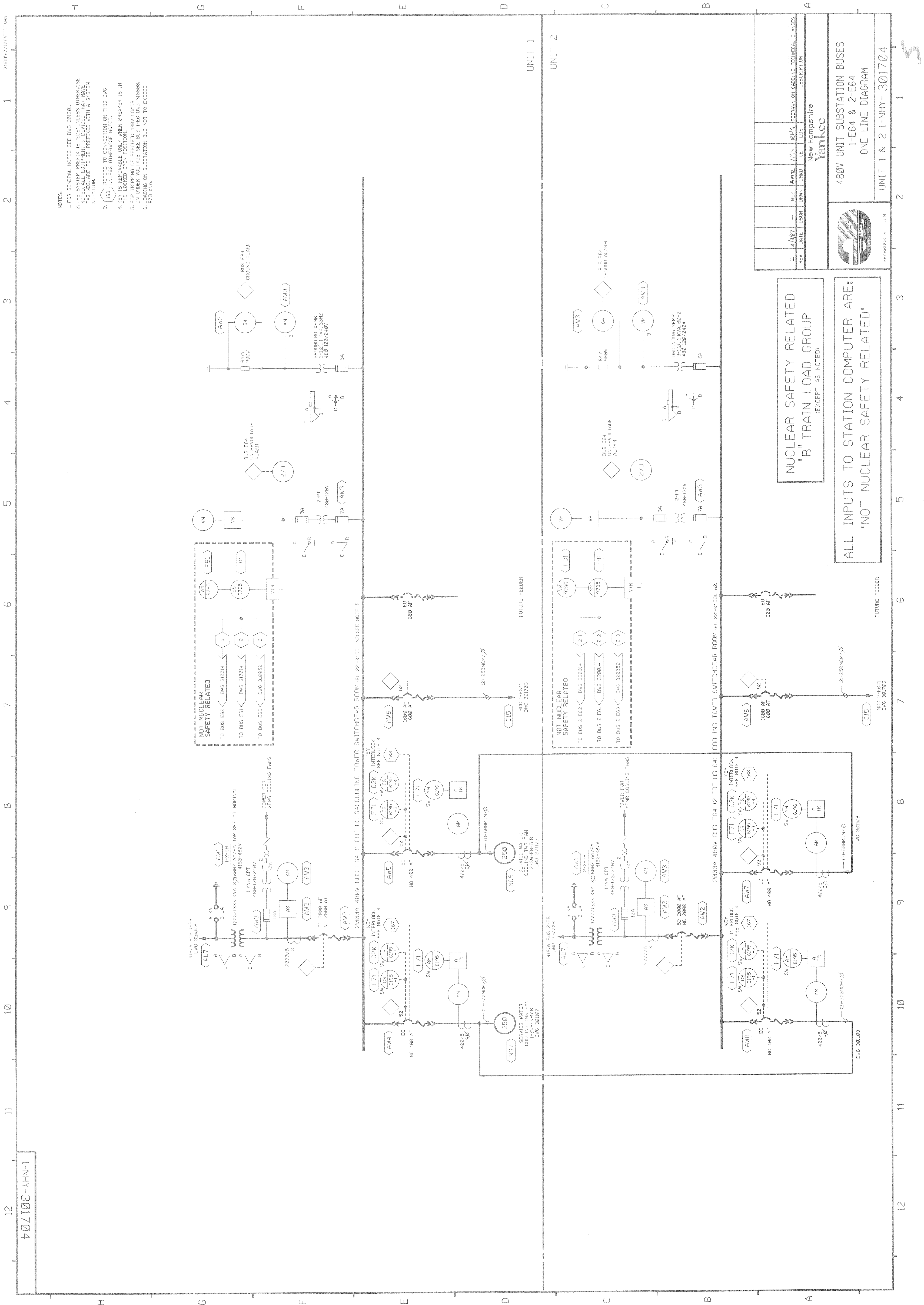
NOTES:
1. FOR GENERAL NOTES SEE DWG 310052.
2. THE SYSTEM PREFIX IS 'E' UNLESS OTHERWISE NOTED. ALL EQUIPMENT AND DEVICES THAT HAVE TAG NUMBERS ARE TO BE PREFIXED WITH A SYSTEM ROTATION.
3. FOR TRIPPING OF SPECIFIC 480V LOADS ON UNDERVOLTAGE SEE BUS 1-E6 DWG 310054.

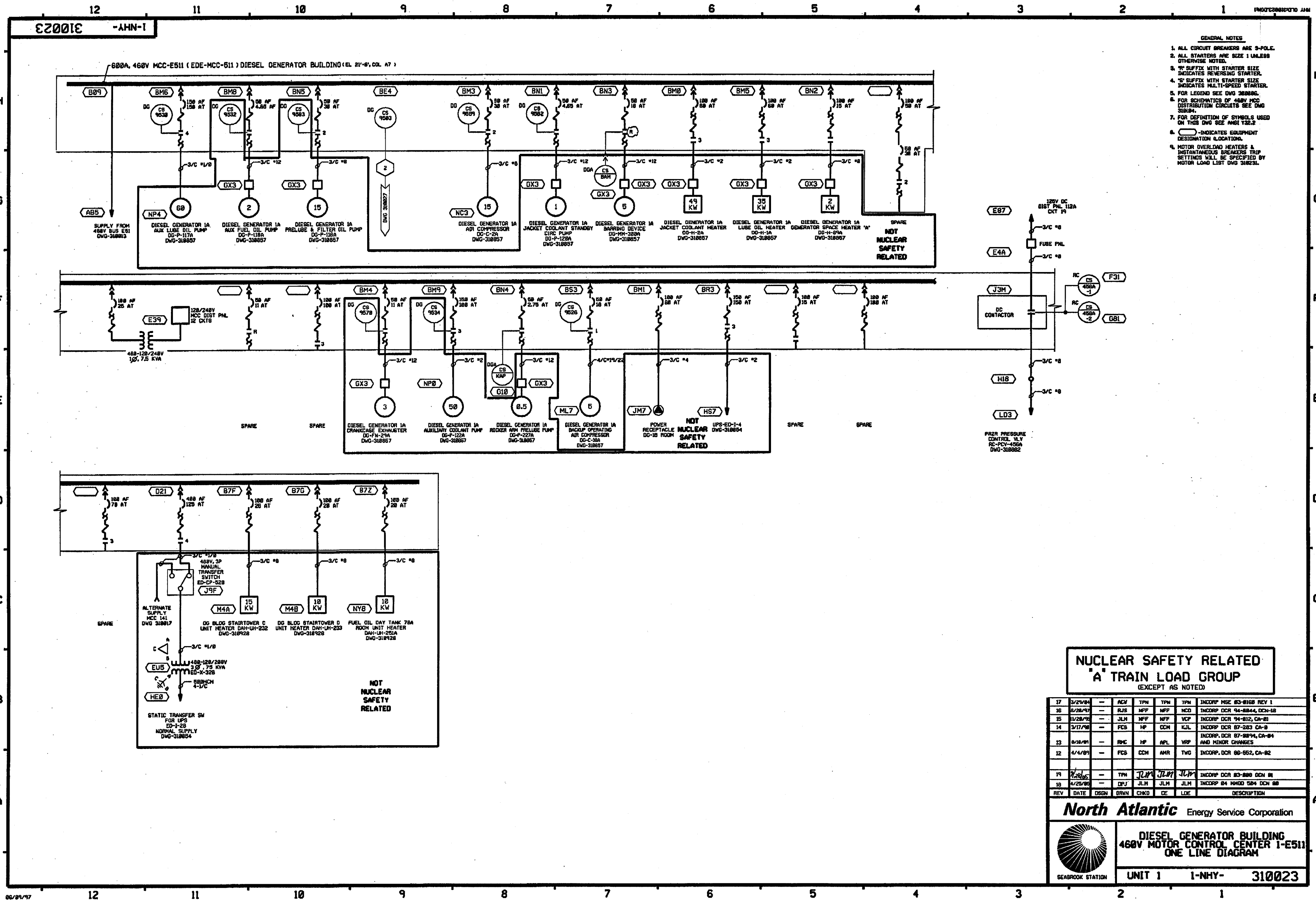
NUCLEAR SAFETY RELATED
'B' TRAIN LOAD GROUP
(EXCEPT AS NOTED)

ALL INPUTS TO STATION COMPUTER ARE:
'NOT NUCLEAR SAFETY RELATED'

16	2/1/75	JLM	NFF	NFF	TMG	INCORP. DCR 93-016 DA-23
19	4/1/75	JLM	TPN	TPN	TPN	INCORP. DCR 93-016 DEN-80
18	8/24/75	NFF	JLM	JLM	MCD	INCORP. DCR 93-016 DCN-80
17	4/1/74	RMC	RMC	CHF	CHF	INCORP. DCR 93-001 DCN 80
REV	DATE	DESIGN	DRWN	CHKD	CEE	DESCRIPTION
North Atlantic Energy Service Corporation						
						
480V UNIT SUBSTATION BUS 1-EB3 ONE LINE DIAGRAM						
UNIT 1 1-NHY- 310052						

407103-AHN-1





- GENERAL NOTES
1. ALL CIRCUIT BREAKERS ARE 3-POLE.
 2. ALL STARTERS ARE SIZE 1 UNLESS OTHERWISE NOTED.
 3. 'R' SUFFIX WITH STARTER SIZE INDICATES REVERSING STARTER.
 4. 'S' SUFFIX WITH STARTER SIZE INDICATES MULTI-SPEED STARTER.
 5. FOR LEGEND SEE DWG 310006.
 6. FOR SCHEMATICS OF 460V MCC DISTRIBUTION CIRCUITS SEE DWG 310004.
 7. FOR DEFINITION OF SYMBOLS USED ON THIS DWG SEE ANSI Y32.2
 8. () INDICATES EQUIPMENT DESIGNATION LOCATION.
 9. MOTOR OVERLOAD HEATERS & INSTANTANEOUS BREAKERS TRIP SETTINGS WILL BE SPECIFIED BY MOTOR LOAD LIST DWG 310023.

NUCLEAR SAFETY RELATED
A TRAIN LOAD GROUP
(EXCEPT AS NOTED)

17	3/25/94	—	ACV	TPM	TPM	TPM	INCORP MSE 83-0168 REV 1
16	2/28/93	—	RJS	NFF	NFF	NCD	INCORP DCR 94-0844, DCM-18
15	11/28/92	—	JLM	NFF	NFF	VCP	INCORP DCR 94-012, CA-01
14	3/17/92	—	FCB	HP	CCM	KJL	INCORP DCR 87-283, CA-8
13	8/28/91	—	RMC	HP	NPL	WFP	INCORP DCR 87-2894, CA-84 AND MINOR CHANGES
12	4/4/89	—	FCB	CCM	AHR	TWG	INCORP DCR 86-552, CA-82
11	2/2/86	—	TPM	JLM	JLM	JLM	INCORP DCR 83-588 DCM 01
10	4/23/85	—	DFJ	JLM	JLM	JLM	INCORP 84 11000 584 DCM 02
REV	DATE	DSGN	BRWN	CHKD	DE	LOE	DESCRIPTION

North Atlantic Energy Service Corporation



DIESEL GENERATOR BUILDING
460V MOTOR CONTROL CENTER 1-E511
ONE LINE DIAGRAM

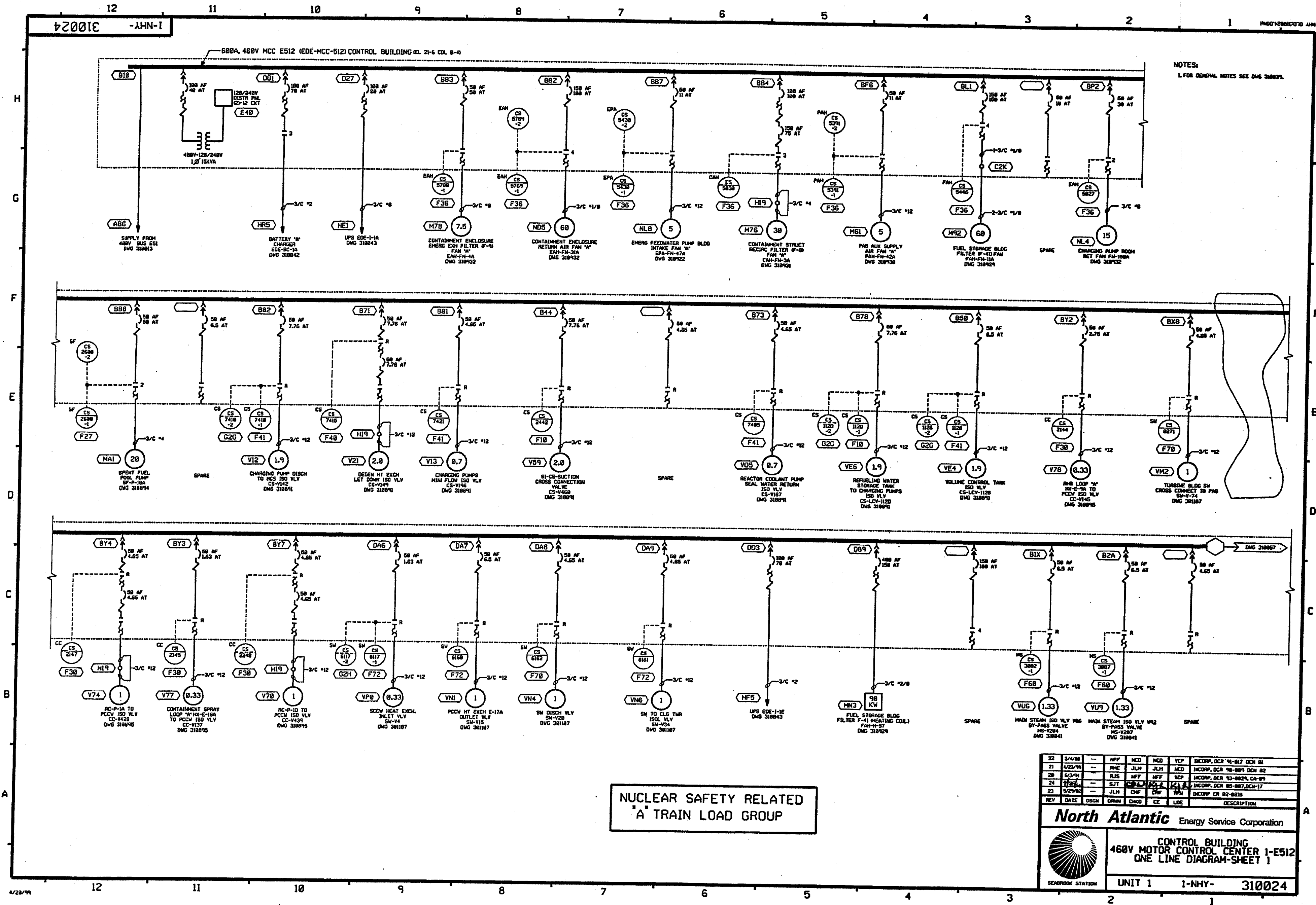
UNIT 1 1-NHY- 310023

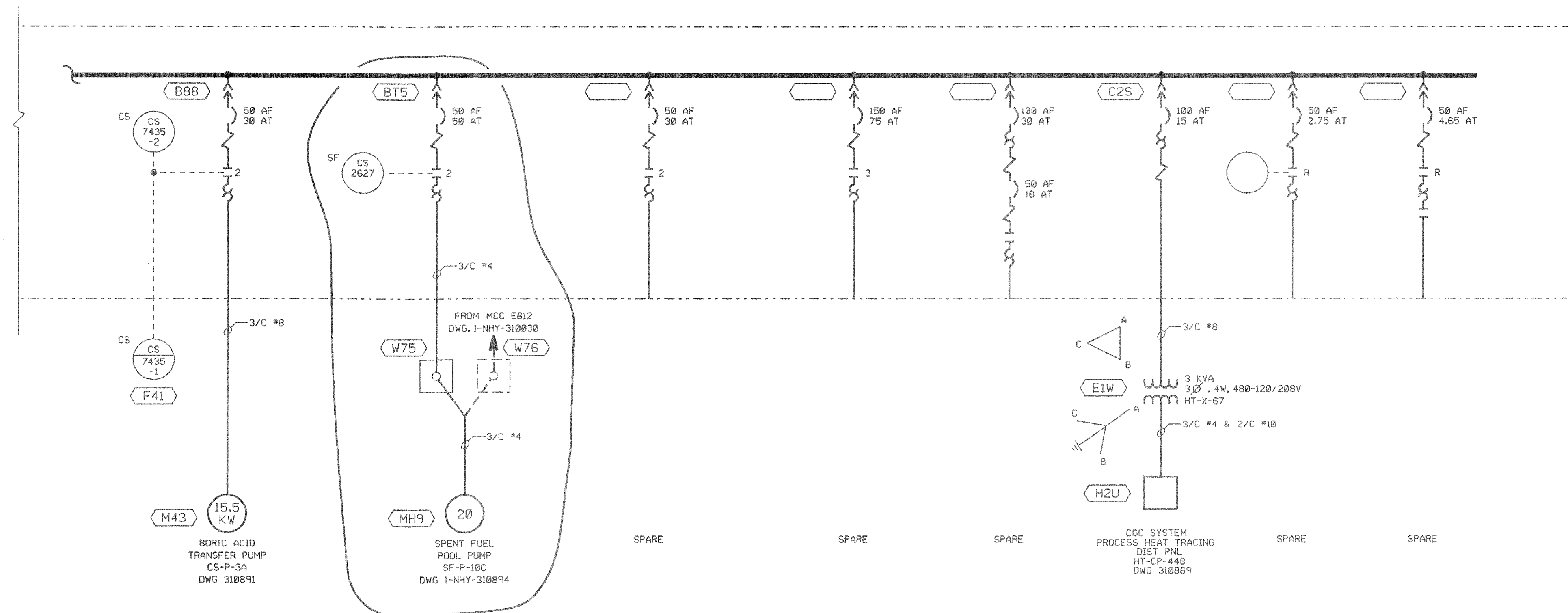
310024 - 1-NHY-1

NOTES:
1. FOR GENERAL NOTES SEE DWG 310034.

NUCLEAR SAFETY RELATED
A TRAIN LOAD GROUP

22	2/4/88	—	NFF	NCD	NCD	VCP	INCORP. DCR 91-017 DCH B1
21	1/23/79	—	RMC	JLM	JLM	NCD	INCORP. DCR 90-009 DCH B2
20	6/3/79	—	RJS	NFF	NFF	VCP	INCORP. DCR 93-002, CA-09
24	9/2/77	—	SJT	CSA	CSA	VCP	INCORP. DCR 92-007, DCH-17
23	5/2/82	—	JLM	CHP	CHP	NFF	INCORP. CH 82-001B
REV	DATE	DSGN	DRWN	CHKD	CE	LOC	DESCRIPTION
North Atlantic							Energy Service Corporation
460V MOTOR CONTROL CENTER 1-E512							ONE LINE DIAGRAM-SHEET 1
UNIT 1							1-NHY- 310024

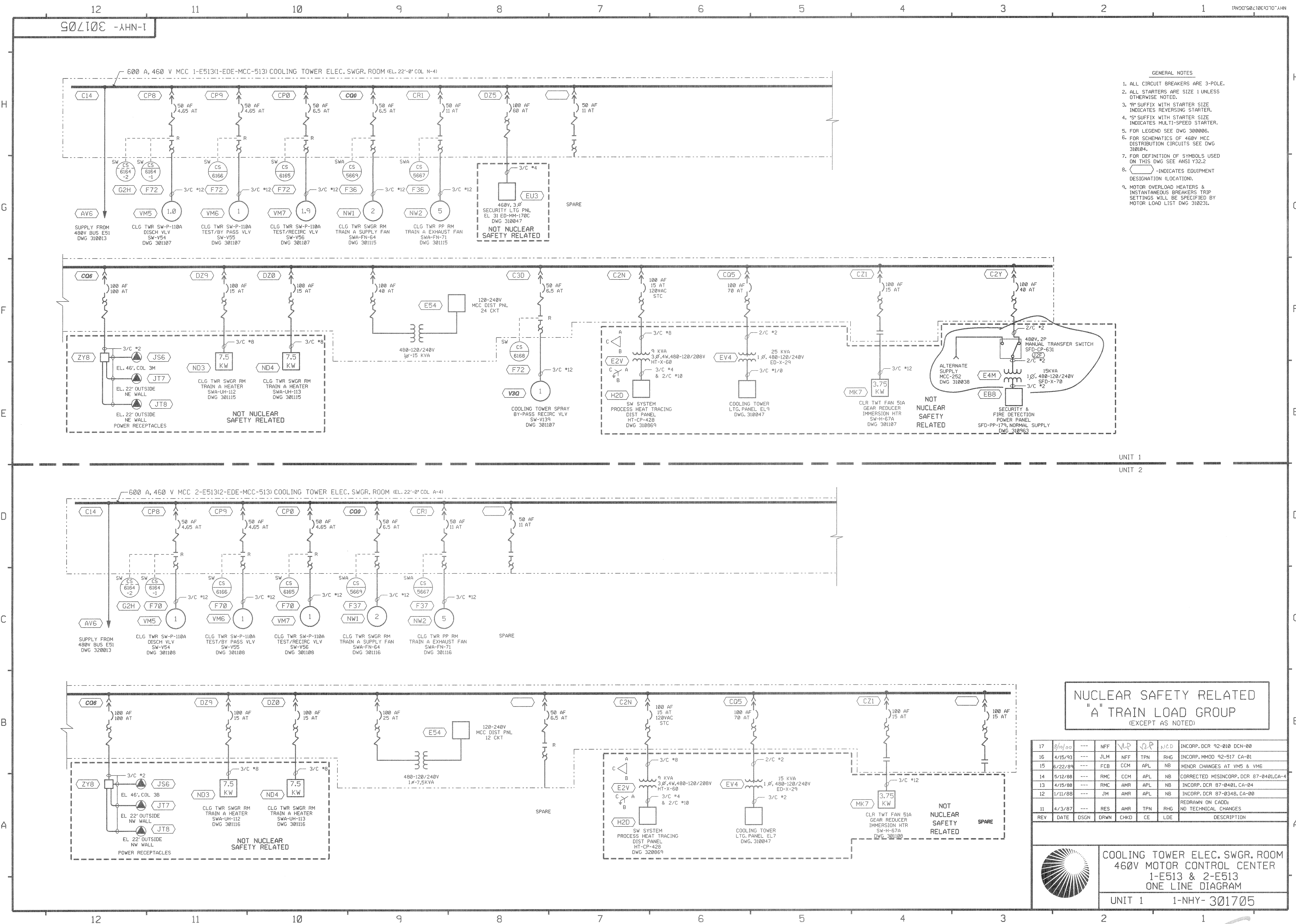


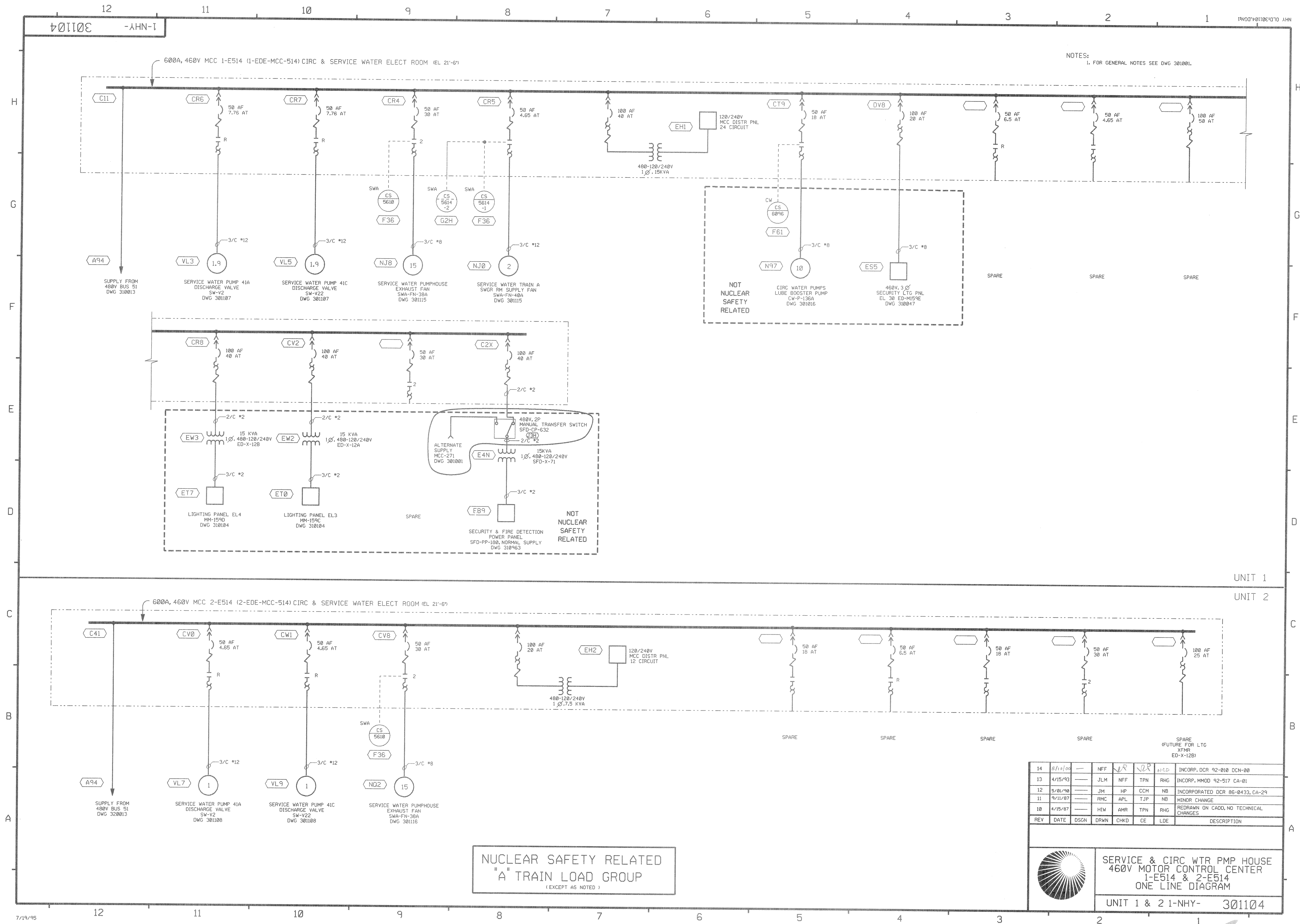


14	6/15/97	---	RJS	NF	JAF	NCD	INCORP. DCR 94-0005, DCN 183		
13	4/3/87	---	DWS	CWK	CE	RHG	REDRAWN ON CADD; NO TECHNICAL CHANGES.		
REV	DATE	DSGN	DRWN	CHKD	CE	LDE	DESCRIPTION		



UNIT 1	1-NHY-	310057
--------	--------	--------





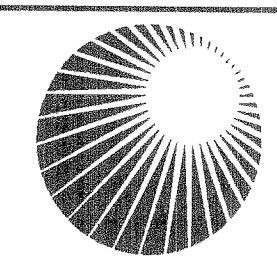
NOTES:
1. FOR GENERAL NOTES SEE DWG 301001.

UNIT 1

UNIT 2

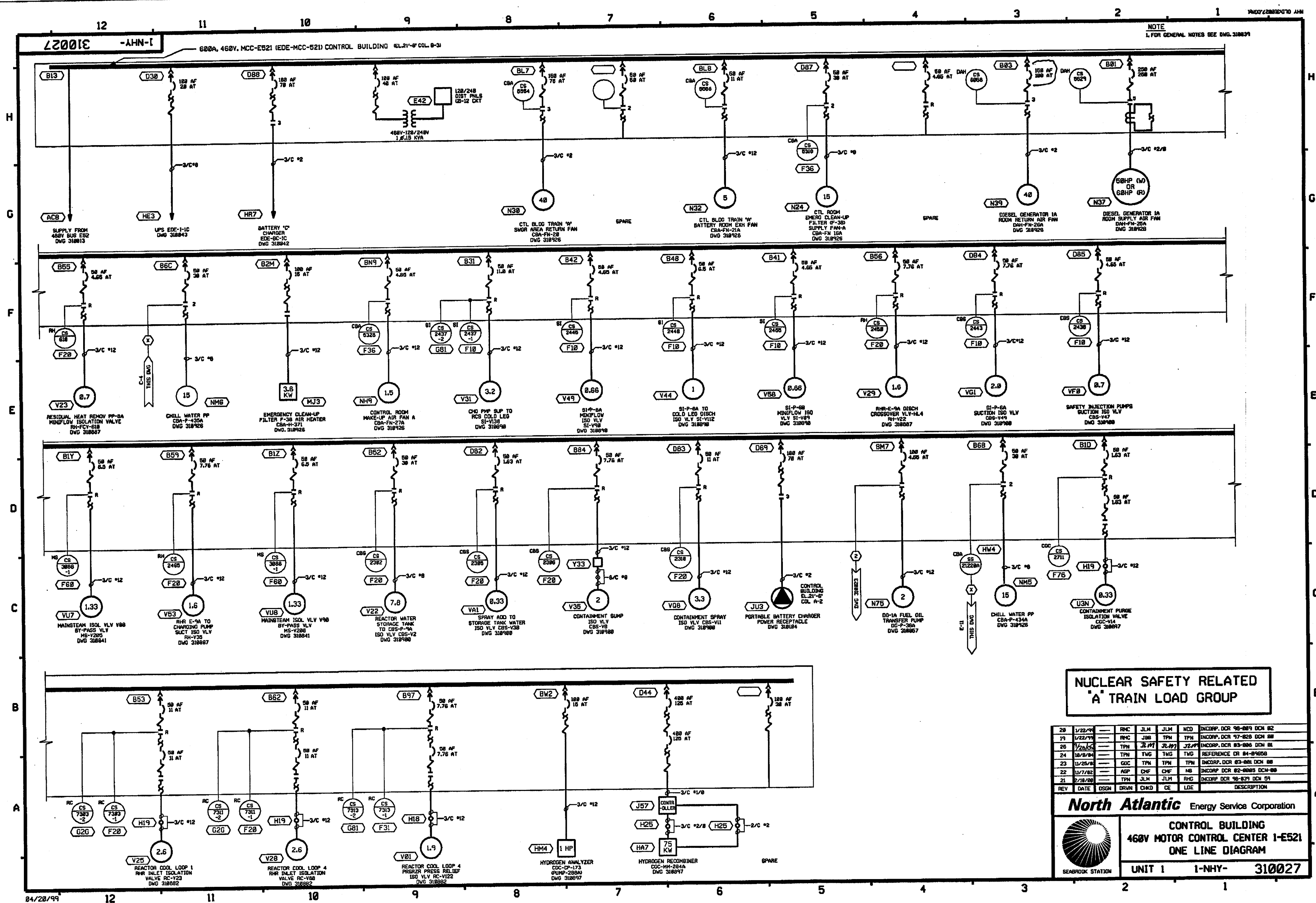
NUCLEAR SAFETY RELATED
"A" TRAIN LOAD GROUP
(EXCEPT AS NOTED)

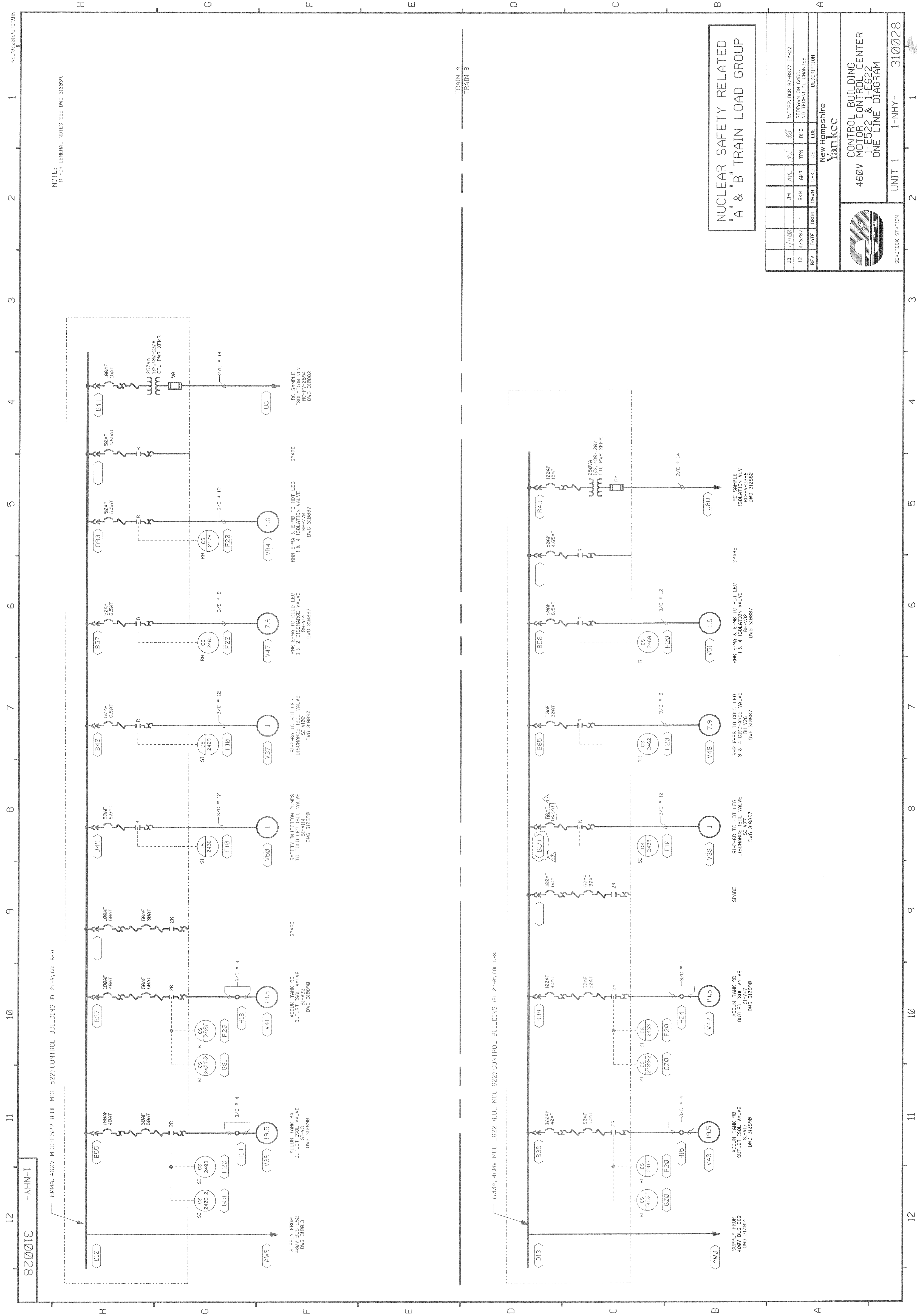
14	8/11/06	—	NFF	✓	✓	✓	INCORP. DCR 92-010 DCN-00
13	4/15/93	—	JLM	NFF	TPN	RHG	INCORP. MMOD 92-517 CA-01
12	5/01/90	—	JH	HP	CCM	NB	INCORPORATED DCR 86-0433, CA-29
11	9/11/87	—	RMC	APL	TJP	NB	MINOR CHANGE
10	4/15/87	—	HIW	AMR	TPN	RHG	REDRAWN ON CADD, NO TECHNICAL CHANGES
REV	DATE	DSGN	DRWN	CHKD	CE	LDE	DESCRIPTION

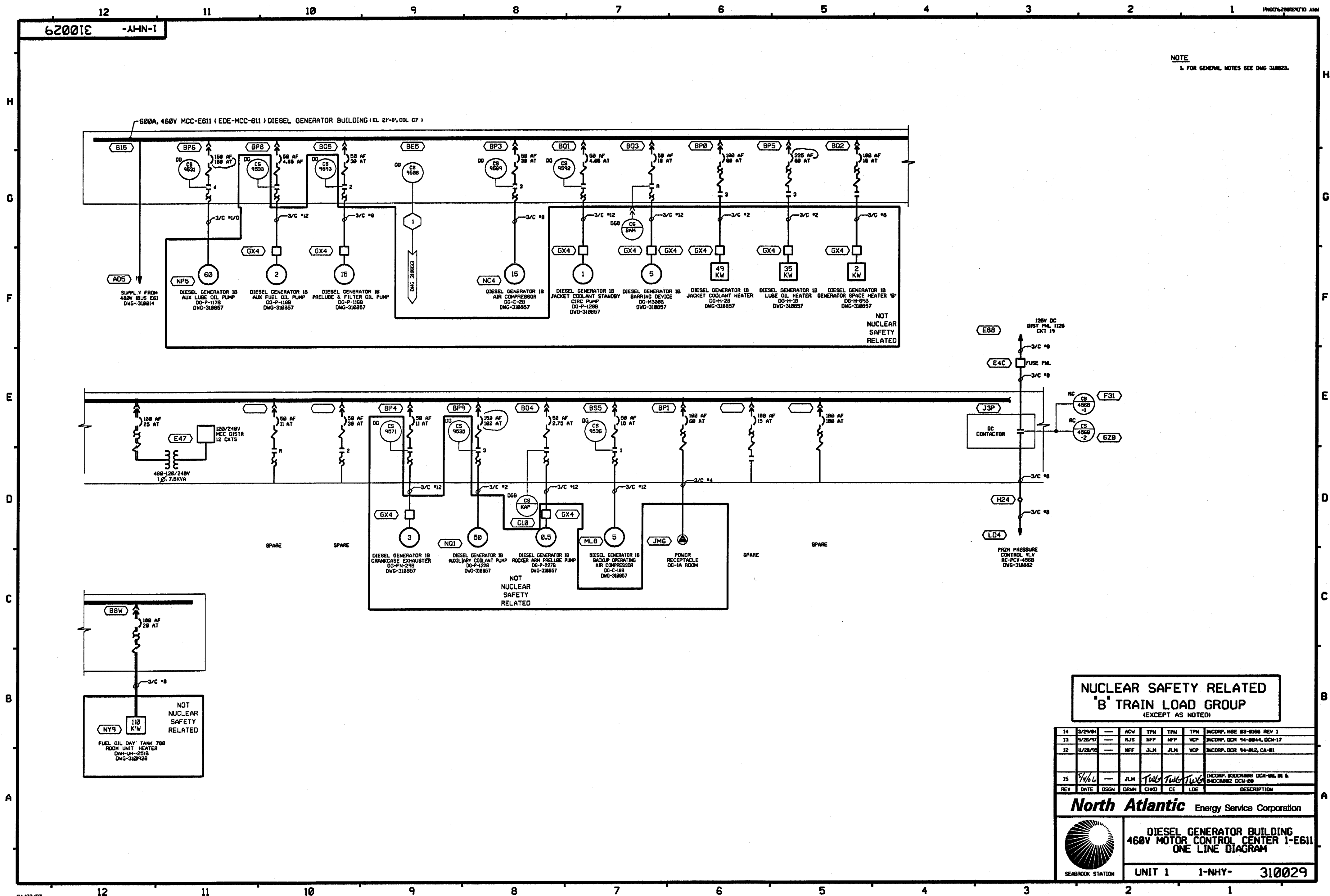


SERVICE & CIRC WTR PMP HOUSE
460V MOTOR CONTROL CENTER
1-E514 & 2-E514
ONE LINE DIAGRAM

UNIT 1 & 2 1-NHY- 301104



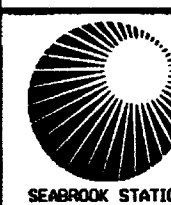




NUCLEAR SAFETY RELATED
"B" TRAIN LOAD GROUP
(EXCEPT AS NOTED)

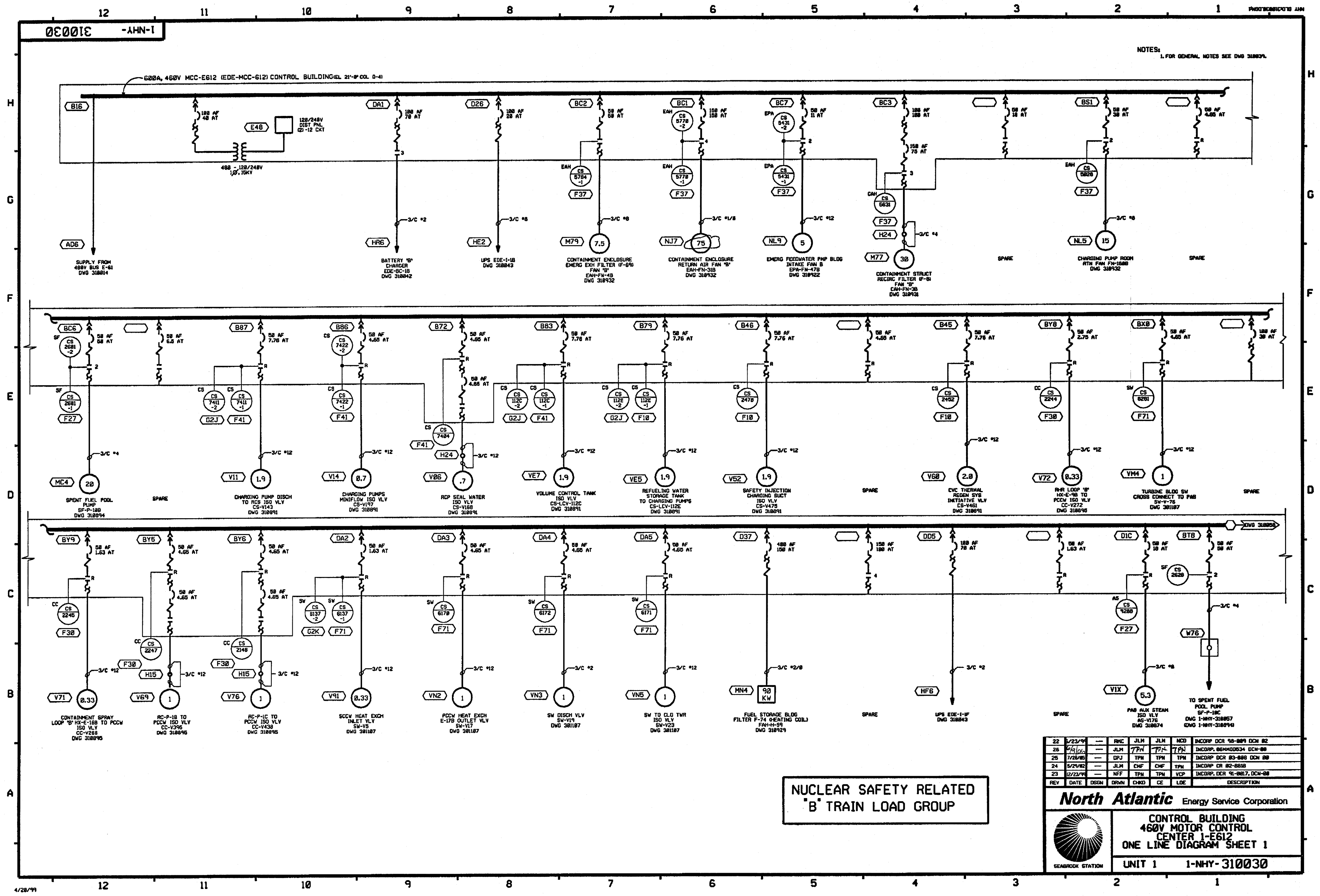
14	3/23/84	---	ACV	TPN	TPN	TPN	INCORP. MSE 83-8158 REV 1
13	5/26/97	---	RJS	NFF	NFF	VCP	INCORP. DCR 14-8844, DCH-17
12	11/28/96	---	NFF	JLM	JLM	VCP	INCORP. DCR 14-812, CA-81
15	7/4/66	---	JLM	Tw	Tw	Tw	INCORP. BDCR888 DCH-88, B1 & B4DCR882 DCH-88
REV	DATE	DSGN	DRWN	CHKD	CE	LDE	DESCRIPTION

North Atlantic Energy Service Corporation




DIESEL GENERATOR BUILDING
460V MOTOR CONTROL CENTER 1-E611
ONE LINE DIAGRAM

UNIT 1 1-NHY- 310029



NUCLEAR SAFETY RELATED
'B' TRAIN LOAD GROUP

22	5/23/94	—	RHC	JLM	JLM	NCB	INCCORP. DCR 92-889 DCM 82
26	6/10/94	—	JLM	TPN	TPN	TPN	INCCORP. 86M40834 DCM-88
26	7/28/95	—	DPJ	TPN	TPN	TPN	INCCORP. DCR 93-888 DCM 88
24	5/27/92	—	JLM	CHF	CHF	TPN	INCCORP. CR 82-888
23	12/23/91	—	NFF	TPN	TPN	VCP	INCCORP. DCR 91-887 DCM-88
REV	DATE	DSGN	DRWN	CHKD	CE	LOC	DESCRIPTION

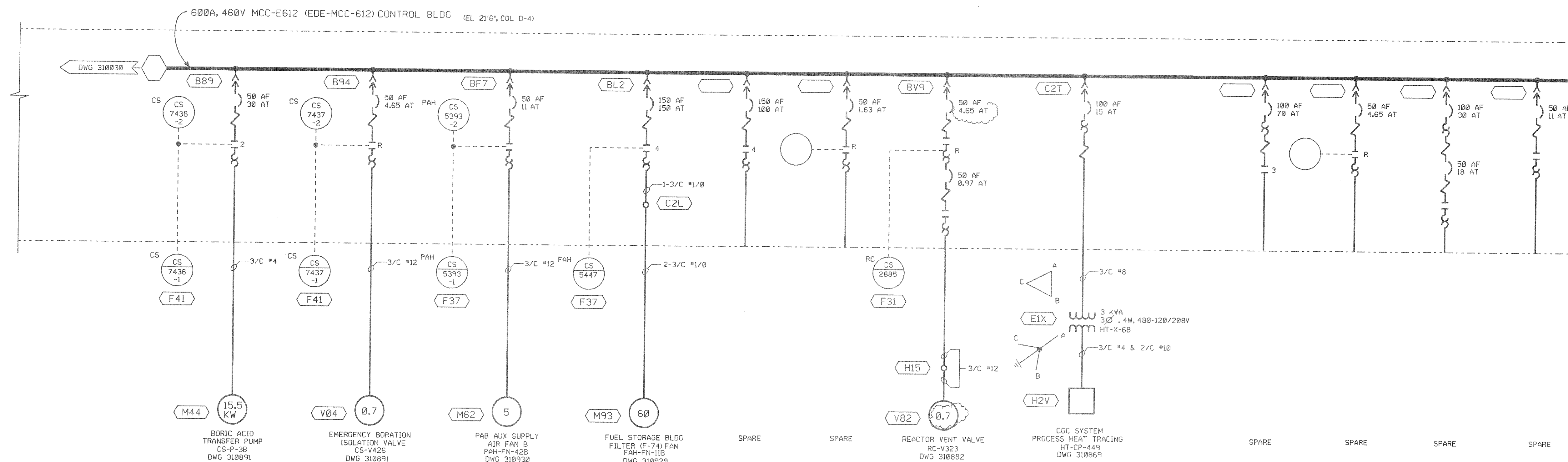


North Atlantic Energy Service Corporation

CONTROL BUILDING
460V MOTOR CONTROL
CENTER 1-E612
ONE LINE DIAGRAM SHEET 1

UNIT 1 1-NHY-310030

NOTES:
1. FOR GENERAL NOTES SEE DWG 310039



NUCLEAR SAFETY RELATED
"B" TRAIN LOAD GROUP
(EXCEPT AS NOTED)

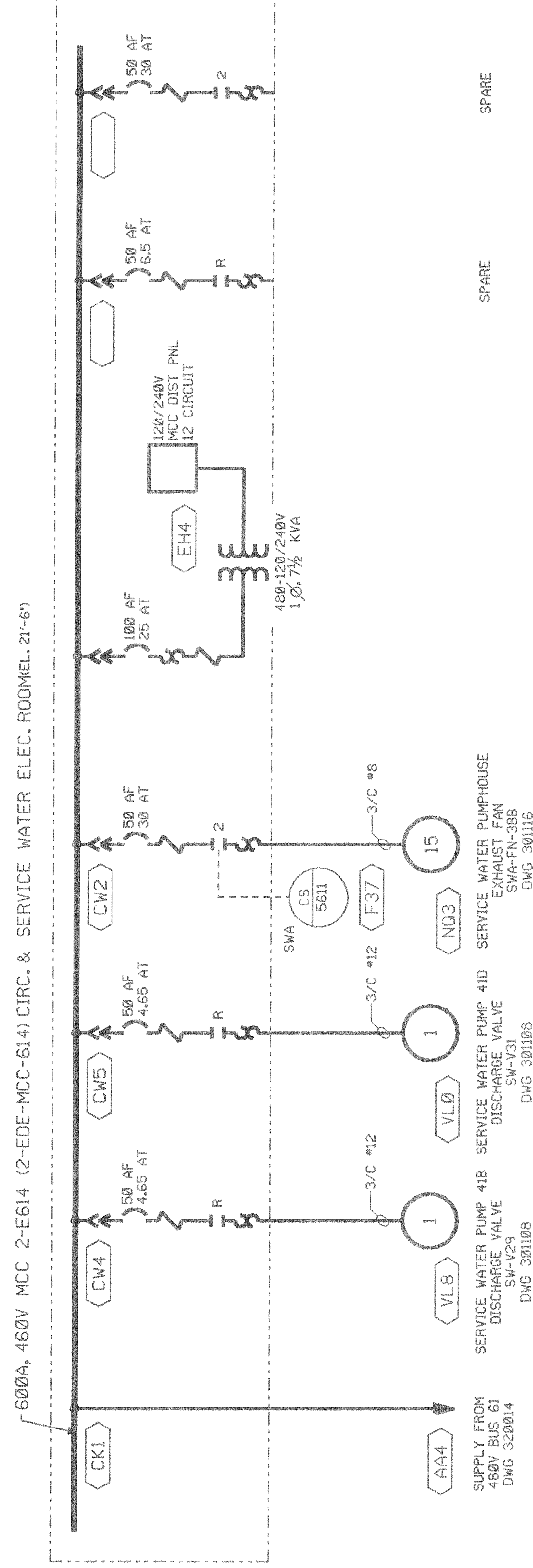
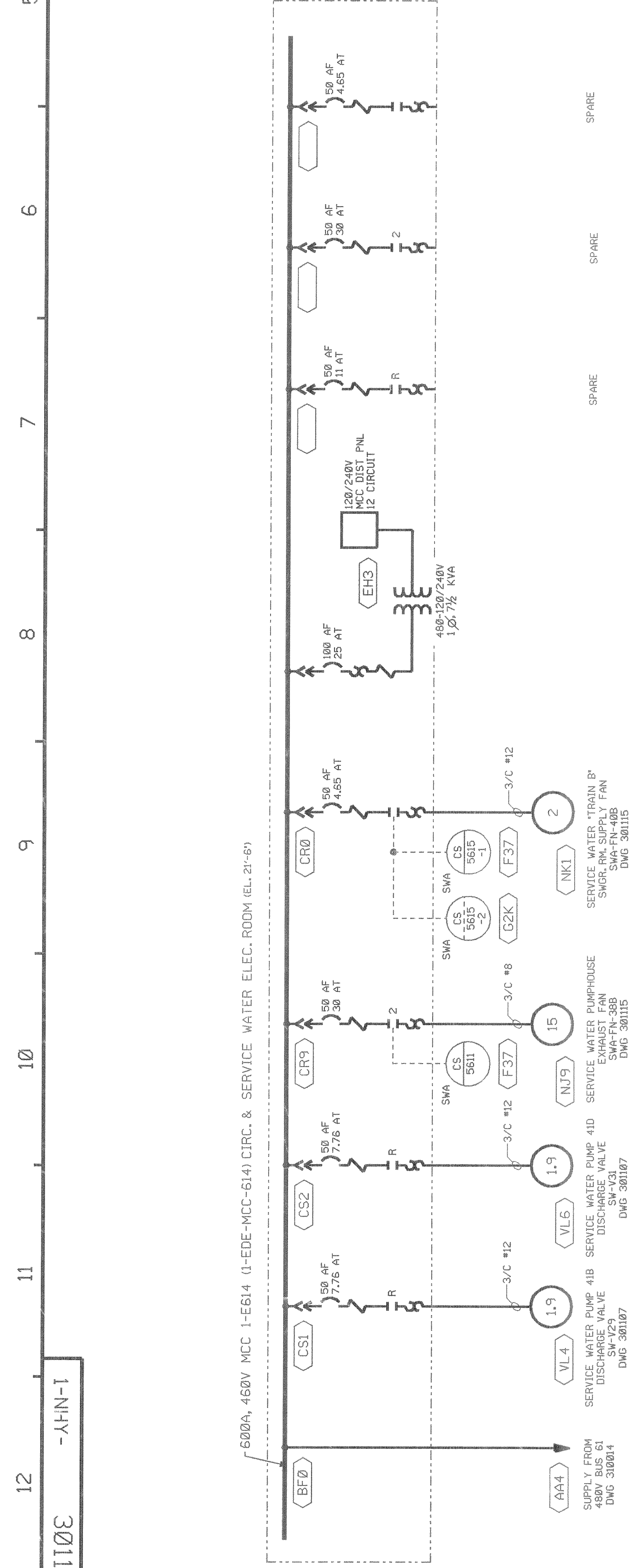
REV	DATE	DSGN	DRWN	CHKD	CE	LDE	DESCRIPTION
13	4/23/89	—	RMC	JLM	JLM	NCD	INCORP DCR 98-009 DCN 00
12	8/18/89	—	FCB	HP	APL	VCP	INCORP DCR 87-0094 CA 03
11	4/3/87	—	DWS	CVK	TPN	RHG	REDRAWN ON CADD; NO TECHNICAL CHANGES
							DESCRIPTION

North Atlantic Energy Service Corporation

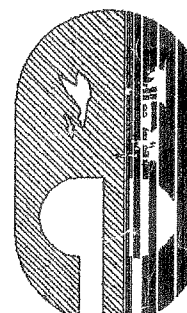
SEABROOK STATION

CONTROL BUILDING
460V MOTOR CONTROL CENTER 1-E612
ONE LINE DIAGRAM
SHEET 2

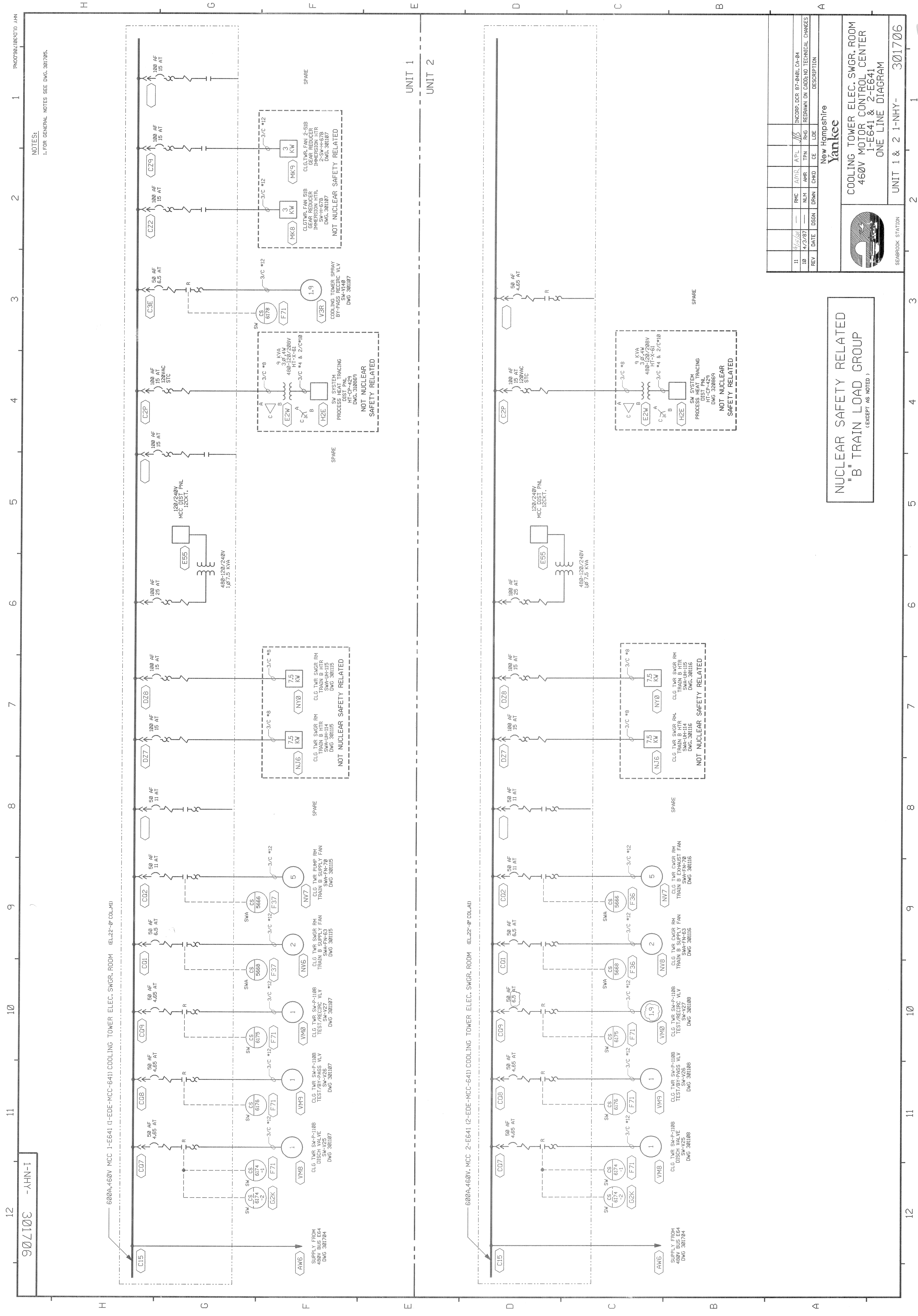
UNIT 1 1-NHY- 310058



NUCLEAR SAFETY RELATED
"B" TRAIN LOAD GROUP

10	10-1-87	—	JM	DRWN	CHKD	CE	LDE	R416	APR 88	REDRAWN ON CAD- NO TECHNICAL CHANGES
REV	DATE	DSGN	DRWN	CHKD	CE	LDE	DESCRIPTION			
<div style="display: flex; justify-content: space-between;"> <div> <p>UNIT 1 & 2</p> <p>1-NHY-</p> </div> <div> <p>301105</p> </div> </div>										
<div style="display: flex; justify-content: space-between;"> <div>  <p>SEABROOK STATION</p> </div> <div> <p>SERVICE & CIRC. WATER PUMP HOUSE 460V MOTOR CONTROL CENTER 1-E614 & 2-E614 ONE LINE DIAGRAM</p> </div> </div>										
<div style="display: flex; justify-content: space-between;"> <div> <p>New Hampshire</p> <p>Yankee</p> </div> </div>										





REV	DATE	DESCRIPTION	REV	DATE	DESCRIPTION
1			1		
2			2		
3			3		
4			4		
5			5		
6			6		
7			7		
8			8		
9			9		
10			10		
11			11		
12	11/15/99	INCORP. MAND. 98-638 DCM 01	12	11/15/99	INCORP. MAND. 98-638 DCM 01

NUCLEAR SAFETY RELATED
A TRAIN LOAD GROUP
CHANNEL I

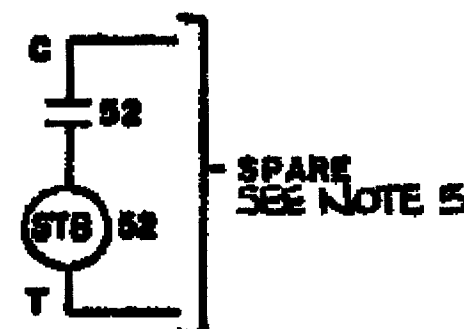
UPS 1-I-1A
VITAL INSTRUMENT
DISTR. PANEL 1-PP-1A
SCHEDULE

New Hampshire
Yankee
Seabrook
Station
SH. 80

1-NHY-310105 SH.E01a

REFERENCE DWG.	DESCRIPTION	LOAD	BKR TRIP (AMPS)	CKT NO.	CKT NO.	BKR TRIP (AMPS)	LOAD	DESCRIPTION	REFERENCE DWG.
310943 SH.FC6b	N1-CP-16 NIS CONTROL PANEL	—	15	1	2	15	—	MM-CP-12 SSPS INPUT CAB. CHANNEL I	310949 SH.E01/2a
310943 SH.FC6b	N1-CP-16 NIS INSTRUMENT POWER	—	15	3	4	15	—	MM-CP-13 SSPS INPUT CAB. CHANNEL I	310949 SH.E02/4a
—	SPARE	—	15	5	6	—	—	BLANK	—
SH.E01b	MCB-GR PAM I INSTRUMENT BUS	—	15	7	8	15	—	SPARE	—
—	BLANK	—	—	—	9	15	—	ED-CP-231 GRD. DETECTION CAB.	SH.E01/10a
310942 SH.E01/9	MM-CP-1 PPC CAB. SET I	—	30	9	10	15	—	PP-1A LOSS OF POWER	SH.E01/12
310949 SH.E01/2a	MM-CP-12 SSPS OUTPUT CAB.#2 TRAIN A	—	15	11	12	15	—	SPACE	—
310949 SH.E01/13a	MM-CP-14 SAFEGUARD TEST CAB.TRAIN A	—	15	13	14	—	—	MAINTENANCE SUPPLY ED-X-31A	SH.D27a
—	BLANK	—	—	—	15	100	—	—	—
SH.D27a	I-1A NORMAL SUPPLY	—	SEE NOTE 1	15	16	100	—	—	—

100A, 120VAC, 1Ø, 2W
DISTRIBUTION PANEL
(E01)
CONTROL BLDG. ELEV. 21'-6", COL. 1A



NOTES:

- 1- ALL BREAKERS ARE THERMAL MAGNETIC EXCEPT NORMAL SUPPLY BREAKER WHICH IS NON-AUTO.
- 2- FOR THREE LINE DIAGRAM SEE SH.D27a
- 3- FOR ARRIS'T SEE F.P. 31874
- 4- — - SEE SH. 5
- 5- SHUNT TRIP OPTIONAL
6. SEE CALCULATION 9763-3-ED-00 34-F FOR CIRCUIT LOAD AMPS.

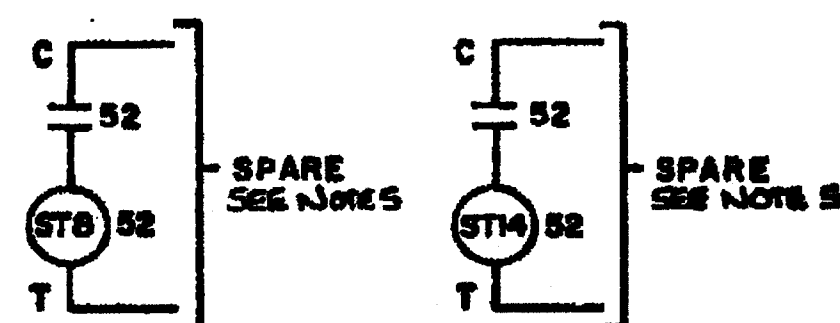
1-NHY-310105 SH.E01a

[illegible]


REFERENCE DWG.	DESCRIPTION	LOAD	BKR TRIP (AMPS)	CKT NO.	CKT NO.	BKR TRIP (AMPS)	LOAD	DESCRIPTION	REFERENCE DWG.
310943 SH. F61b	NI-CP-16 NIS CONTROL PANEL	—	15	1	2	15	—	MM-CP-12 SSPS INPUT CAB. CHANNEL II	310949 SH. E01/2a
310943 SH. F61b	NI-CP-16 NIS INSTRUMENT POWER	—	15	3	4	15	—	MM-CP-13 SSPS INPUT CAB. CHANNEL II	310949 SH. E02/4a
—	SPARE	—	15	5	6	—	—	BLANK	BARRIER
SH. E02b	MCB CR PAM 2 INSTRUMENT BUS	—	15	7	8	15	—	SPARE	—
BLANK									
310942 SH. E02/9	MM-CP-2 PPC CAB. SET II	—	30	9	10	15	—	ED-CP-232 GRD. DETECTION CAB.	SH. E02/10a
310949 SH. E02/4a	MM-CP-13 SSPS OUTPUT CAB #2 TRAIN B	—	15	11	12	15	—	PP-18 LOSS OF POWER	SH. E02/12
310949 SH. E01/13a	MM-CP-15 SAFEGUARD TEST CAB. TRAIN B	—	15	13	14	40	—	SPARE	—
BLANK									
SH. D26a	I-18 NORMAL SUPPLY	—	SEE NOTE 1	15	16	100	—	MAINTENANCE SUPPLY ED-X-315	SH. D26a

**NUCLEAR SAFETY RELATED
'B' TRAIN LOAD GROUP
CHANNEL II**

100A, 120VAC, 1Ø, 2W
DISTRIBUTION PANEL
E02
CONTROL BLDG. ELEV. 21'-6", COL. 1D



NOTES:

- 1- ALL BREAKERS ARE THERMAL MAGNETIC EXCEPT NORMAL SUPPLY BREAKER WHICH IS NON-AUTO.
- 2- FOR THREE LINE DIAGRAM SEE SH. D26:
- 3- FOR ARRGT SEE F.P. 31875
- 4-  - SEE SH. 3
- 5- SHUNT TRIP OPTIONAL
6. SEE CALCULATION 9763-3-ED-00-34-F FOR CIRCUIT LOAD AMPS.

1-NHY-310105 SH. E02a