

NOTES

1. THE SYSTEM PREFIX IS 'EDE' UNLESS OTHERWISE NOTED. ALL EQUIPMENT AND DEVICES THAT HAVE TAG NUMBERS ARE TO BE PREFIXED WITH A SYSTEM NOTATION. FOR DEFINITION OF ALL SYMBOLS USED ON THIS DRAWING REFER TO ANSI-Y32.2.

2. FOR LEGEND SEE DRAWING 300006.

REFERENCE DRAWINGS

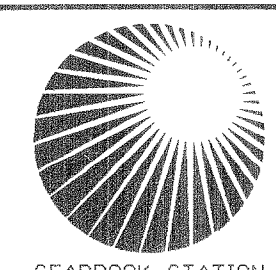
DWG 310042 125V DC VITAL DISTRIBUTION SYSTEM ONE LINE DIAGRAM

DWG 310043 120V AC VITAL INSTRUMENT BUSES ONE LINE DIAGRAM

DWG 310054 120V AC NON-VITAL INSTRUMENT BUSES ONE LINE DIAGRAM

DWG 310059 120V DC NON-VITAL DISTRIBUTION SYSTEM ONE LINE DIAGRAM

14	11/20/95	---	NFF	JLM	VLP	VLP	INCORP. DCR 94-012, CA-01
13	7/17/90	---	RMC	APL	CCM	KJL	INCORP. DCR 86-481, CA-10
12	3/17/90	---	FCB	HP	CCM	KJL	INCORP. DCR 87-283 CA-0
11	11/10/89	---	FCB	HP	CCM	KJL	PARTIAL OPERABILITY TRAIN 'B' ONLY INCORP. DCR 86-481, CA-09
10	8/18/89	---	FCB	HP	APL	VCP	INCORP. DCR 87-0094 CA 04
9	12/8/88	---	RMC	HP	APL	TWG	INCORPORATED DCR 86-0436, CA-02
8	4/3/87	---	JM	AMR	TPN	RHG	REDRAWN ON CADD NO TECHNICAL CHANGES
REV	DATE	DSGN	DRWN	CHKD	CE	LDE	DESCRIPTION



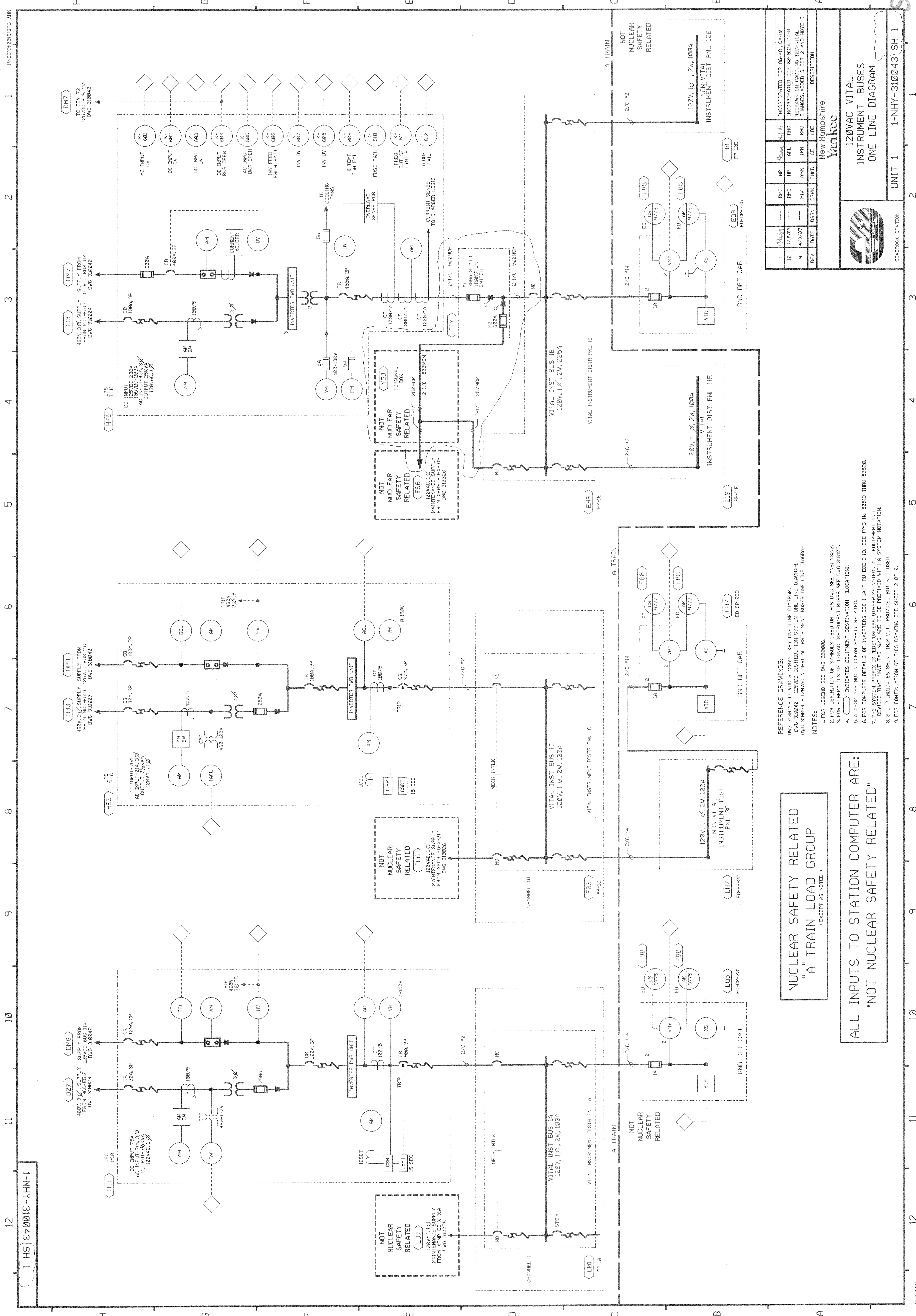
**North Atlantic** Energy Service Corporation

125VDC AND 120VAC INSTRUMENT BUSES  
KEY ONE LINE DIAGRAM

UNIT 1 1-NHY- 310041

NUCLEAR SAFETY RELATED  
"A" & "B" TRAIN LOAD GROUP  
(EXCEPT AS NOTED)





NUCLEAR SAFETY RELATED  
"A" TRAIN LOAD GROUP  
(EXCEPT AS NOTED)

ALL INPUTS TO STATION COMPUTER ARE:  
"NOT NUCLEAR SAFETY RELATED"

- REFERENCE DRAWINGS:  
DWG 310041 - 120VDC & 120VAC KEY ONE LINE DIAGRAM  
DWG 310042 - 120VDC DISTRIBUTION SYSTEM ONE LINE DIAGRAM  
DWG 310054 - 120VAC NON-VITAL INSTRUMENT BUSES ONE LINE DIAGRAM
- NOTES:  
1. FOR LEGEND SEE DWG 310006.  
2. FOR DEFINITION OF SYMBOLS USED ON THIS DWG SEE ANSI Y32.2.  
3. FOR SCHEMATICS OF 120VAC INSTRUMENT BUSES SEE DWG 310005.  
4. ( ) INDICATES EQUIPMENT DESTINATION LOCATION.  
5. ALARMS ARE NOT NUCLEAR SAFETY RELATED.  
6. FOR COMPLETE DETAILS OF INVERTERS EDE-1-1A THRU EDE-1-1D, SEE FP'S No 50013 THRU 50020.  
7. THE SYSTEM PREFIX IS "ED" UNLESS OTHERWISE NOTED. ALL EQUIPMENT AND DEVICES THAT HAVE TAG NO'S ARE TO BE PREFIXED WITH A SYSTEM NOTATION.  
8. STC \* INDICATES SHUNT TRIP COIL PROVIDED BUT NOT USED.  
9. FOR CONTINUATION OF THIS DRAWING SEE SHEET 2 OF 2.

REV	DATE	DSN	CHKD	CE	LDE	DESCRIPTION
11	11/14/93		RMC	HP	KJL	INCORPORATED DCR 86-181, CA-10
10	11/19/93		RMC	HP	APL	INCORPORATED DCR 88-0124, CA-8
9	4/3/87		HIV	AMR	TPN	REWORKED FOR CHANGES ADDED SHEET 2 AND NOTE 9

New Hampshire  
**Yankee**

120VAC VITAL  
INSTRUMENT BUSES  
ONE LINE DIAGRAM

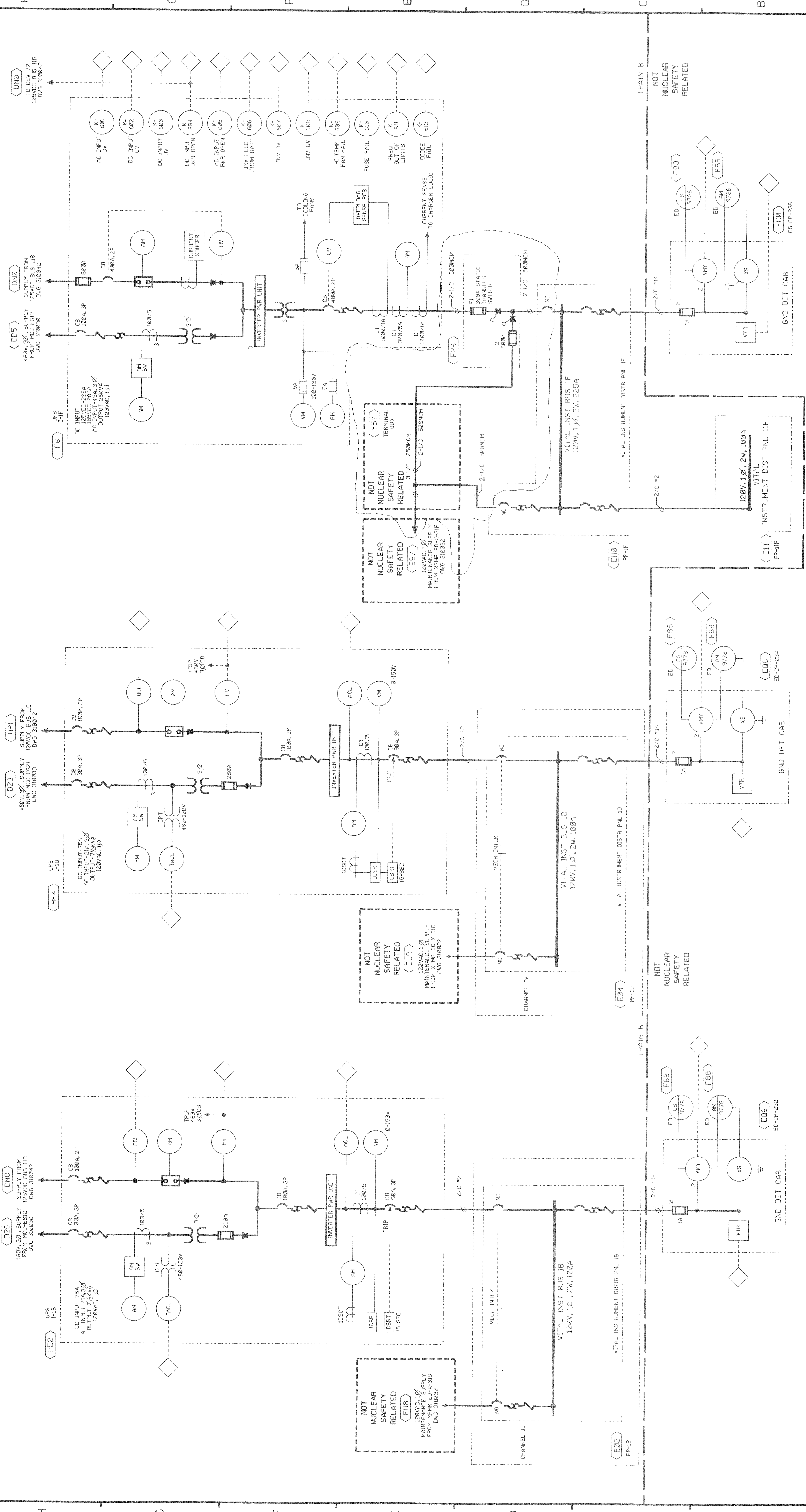
UNIT 1 1-NHY-310043 SH 1

SEABROOK STATION



1-NHY-310043 SH 2

12 11 10 9 8 7 6 5 4 3 2 1



NOTE: FOR CONTINUATION OF THIS DRAWING, NOTES AND REFERENCES SEE SHEET 1.

REV	DATE	DESCRIPTION
1	11/10/87	INCORP. DCR 88-481, CA-89
2	4/3/87	REDRAWN ON CAD, NO TECHNICAL CHANGES, ADDED SHEET 2 AND NOTE 9

New Hampshire  
Yankee

120VAC VITAL INSTRUMENT BUSES ONE LINE DIAGRAM
UNIT 1
1-NHY-310043 SH 2

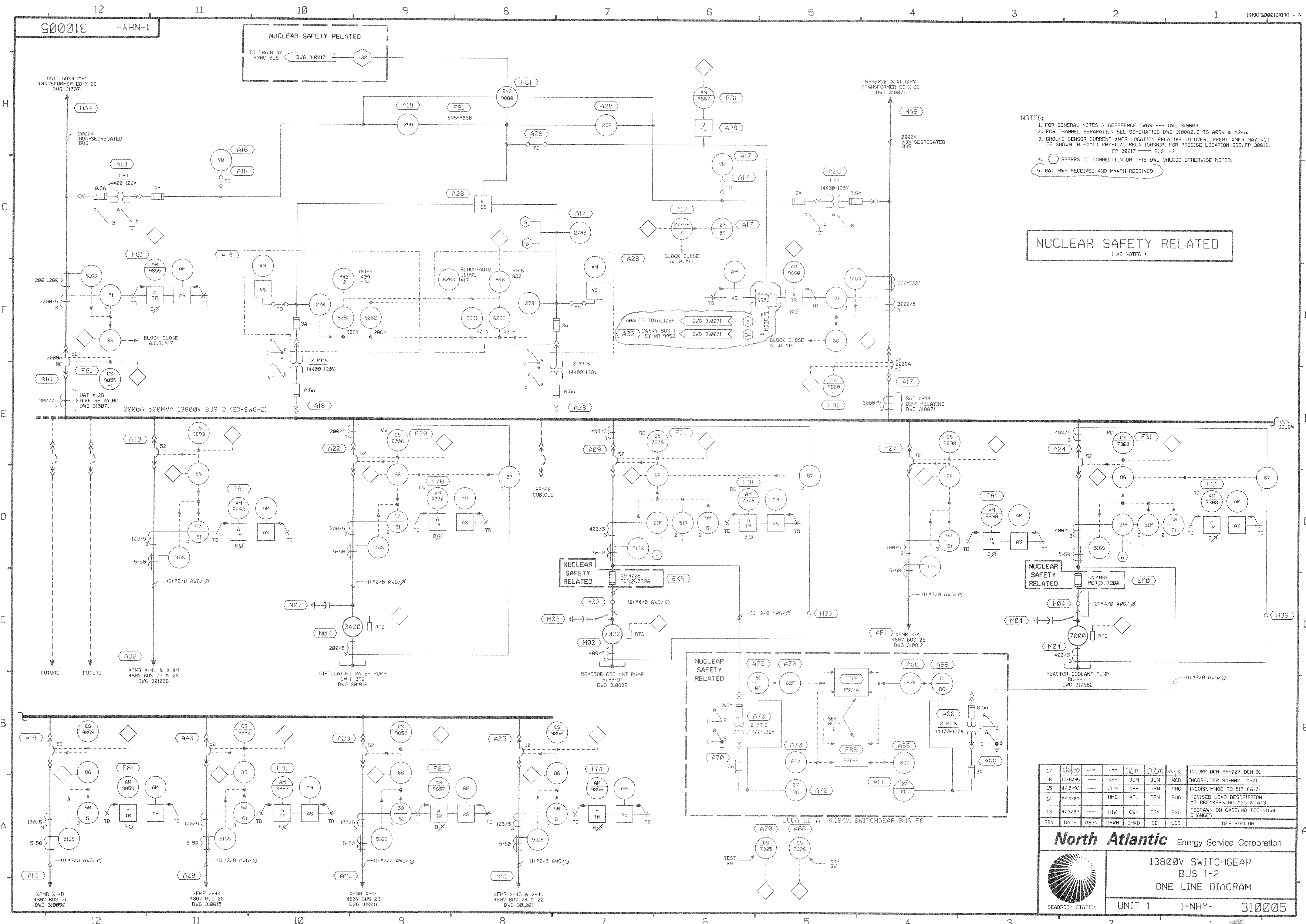
NUCLEAR SAFETY RELATED  
"B" TRAIN LOAD GROUP  
(EXCEPT AS NOTED)

ALL INPUTS TO STATION COMPUTER ARE:  
"NOT NUCLEAR SAFETY RELATED"





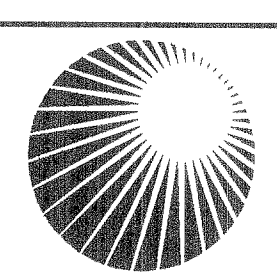




- NOTES:
1. FOR GENERAL NOTES & REFERENCE DWGS SEE DWG 310004.
  2. FOR CHANNEL SEPARATION SEE SCHEMATICS DWG 310082, SHTS A09a & A24a.
  3. GROUND SENSOR CURRENT XMR LOCATION RELATIVE TO OVERCURRENT XMR MAY NOT BE SHOWN IN EXACT PHYSICAL RELATIONSHIP. FOR PRECISE LOCATION SEE: FP 30012, FP 30217 — BUS 1-2
  4. REFERS TO CONNECTION ON THIS DWG UNLESS OTHERWISE NOTED.
  5. RAT MWH RECEIVED AND MVARH RECEIVED

NUCLEAR SAFETY RELATED  
(AS NOTED)

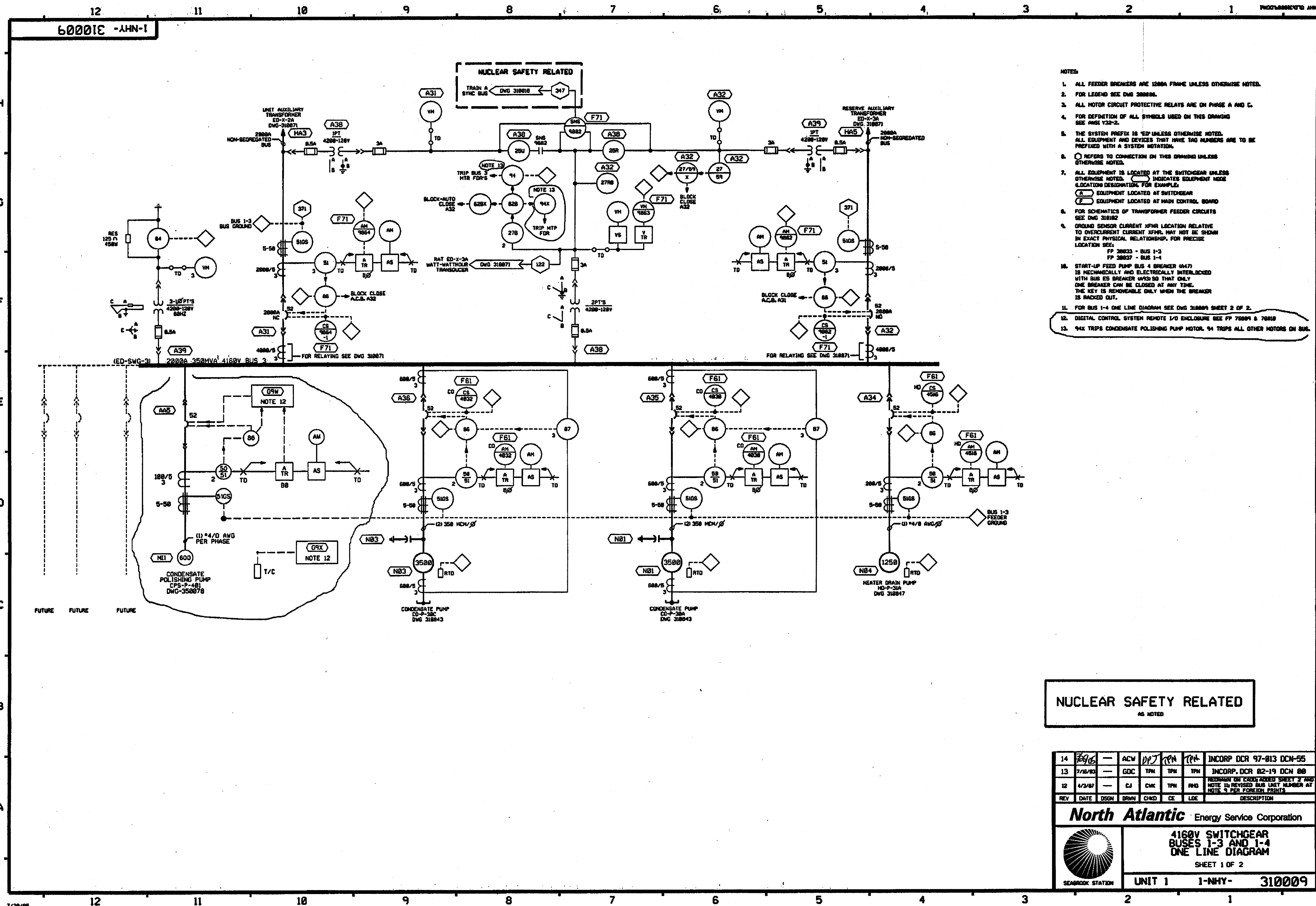
17	11/10/00	—	NFF	JLM	JLM	—	INCORP. DCR 99-027 DCN-01
16	12/6/95	—	NFF	JLM	JLM	—	INCORP. DCR 94-002 CA-01
15	4/15/93	—	JLM	NFF	TPN	RHG	INCORP. MMOD 92-517 CA-01
14	6/10/87	—	RMC	APL	TPN	RHG	REVISED LOAD DESCRIPTION AT BREAKERS NO. A25 & A43
13	4/3/87	—	HW	CWK	TPN	RHG	REDRAWN ON CADD; NO TECHNICAL CHANGES
REV	DATE	DSGN	DRWN	CHKD	CE	LDE	DESCRIPTION



**North Atlantic** Energy Service Corporation


13800V SWITCHGEAR  
BUS 1-2  
ONE LINE DIAGRAM

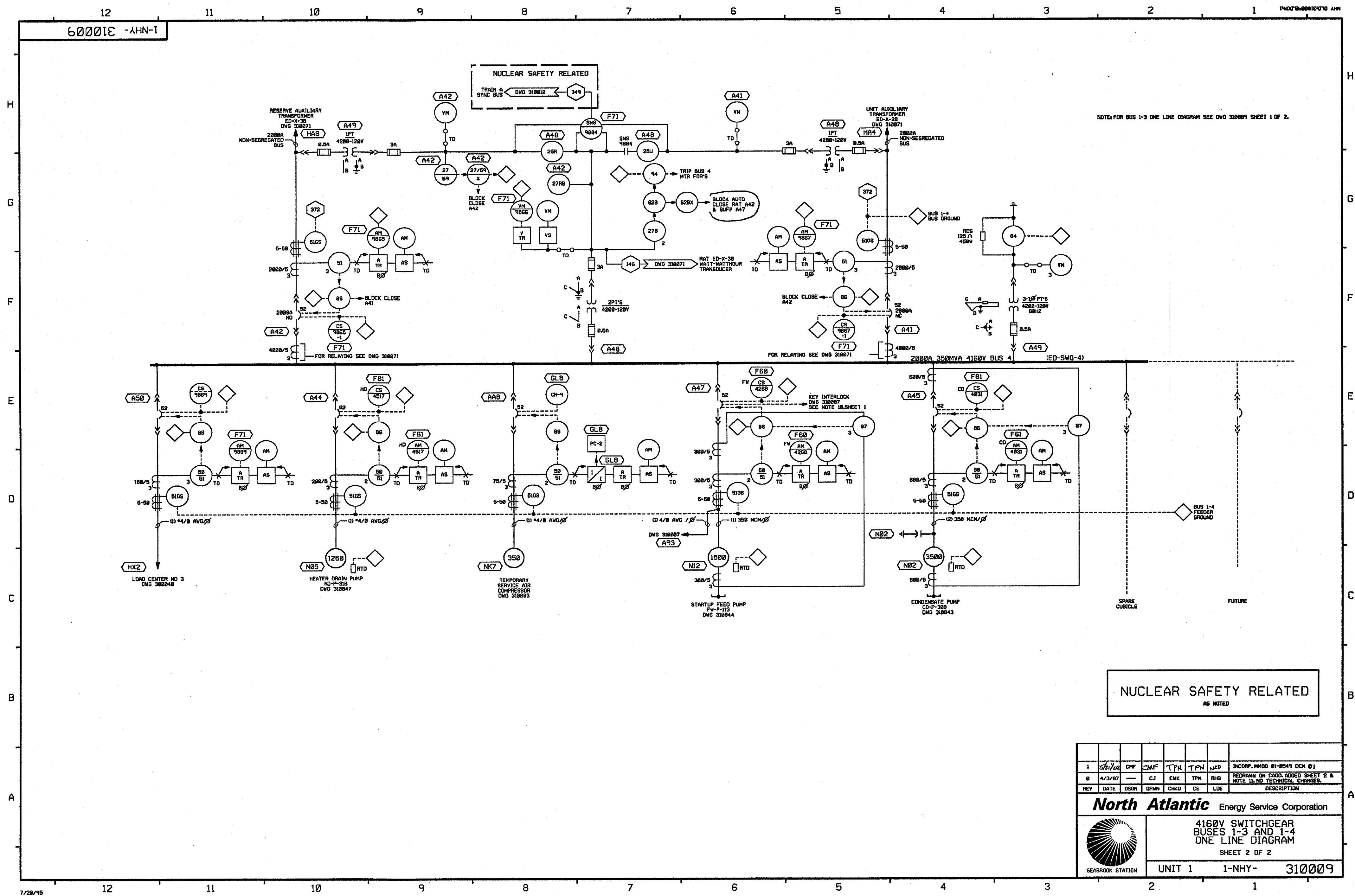
UNIT 1 1-NHY- 310005



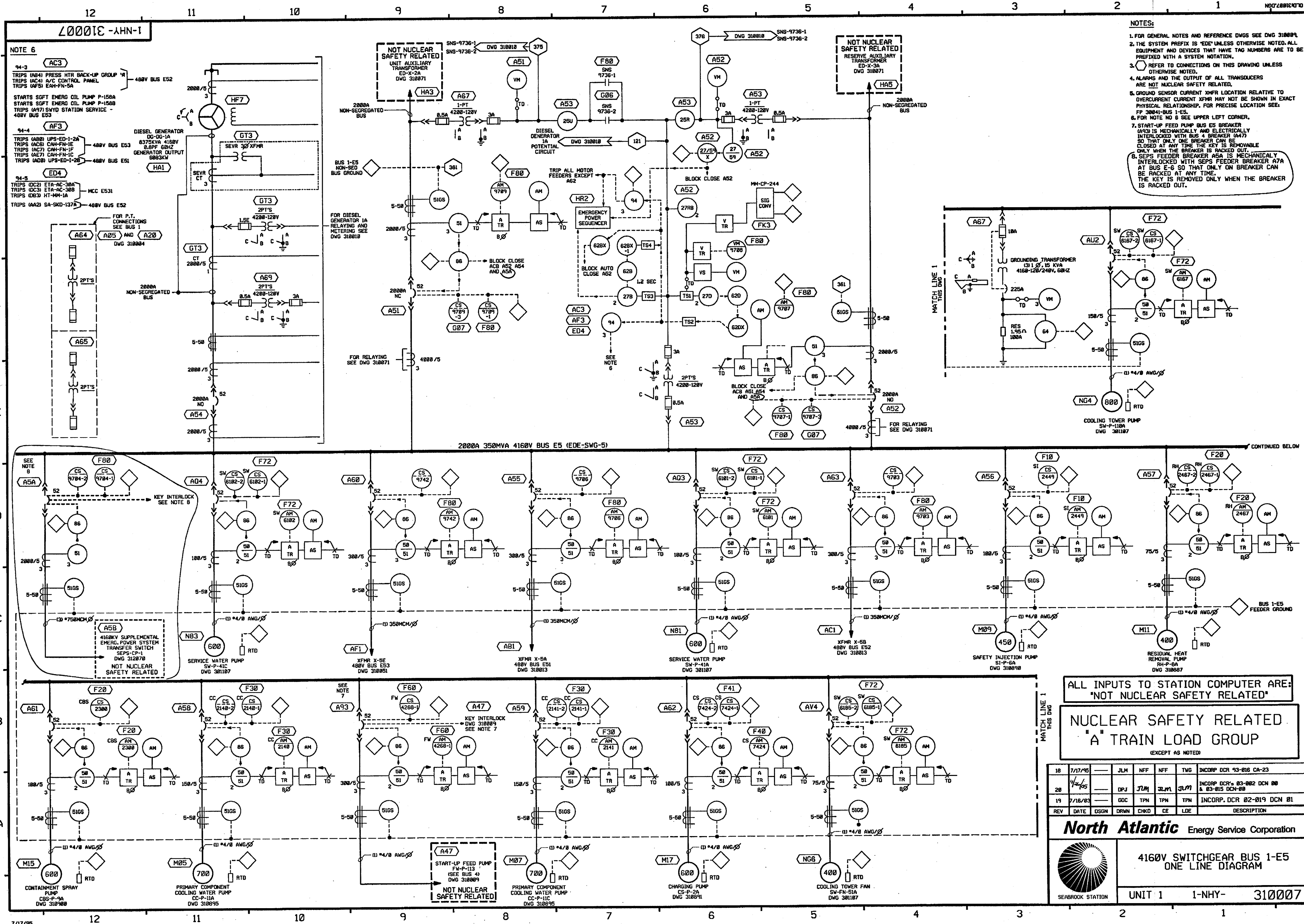
- NOTES:
1. ALL FEEDER BREAKERS ARE 1200A FRAME UNLESS OTHERWISE NOTED.
  2. FOR LEGEND SEE DWG 300006.
  3. ALL MOTOR CIRCUIT PROTECTIVE RELAYS ARE ON PHASE A AND C.
  4. FOR DEFINITION OF ALL SYMBOLS USED ON THIS DRAWING SEE ANSI Y32-2.
  5. THE SYSTEM PREFIX IS 'ED' UNLESS OTHERWISE NOTED. ALL EQUIPMENT AND DEVICES THAT HAVE TAG NUMBERS ARE TO BE PREFIXED WITH A SYSTEM NOTATION.
  6. ○ REFERS TO CONNECTION ON THIS DRAWING UNLESS OTHERWISE NOTED.
  7. ALL EQUIPMENT IS LOCATED AT THE SWITCHGEAR UNLESS OTHERWISE NOTED. ○ INDICATES EQUIPMENT NODE LOCATION DESIGNATION. FOR EXAMPLE:  
○ EQUIPMENT LOCATED AT SWITCHGEAR  
○ EQUIPMENT LOCATED AT MAIN CONTROL BOARD
  8. FOR SCHEMATICS OF TRANSFORMER FEEDER CIRCUITS SEE DWG 310182.
  9. GROUND SENSOR CURRENT XFMR LOCATION RELATIVE TO OVERCURRENT CURRENT XFMR MAY NOT BE SHOWN IN EXACT PHYSICAL RELATIONSHIP. FOR PRECISE LOCATION SEE:  
FP 30033 - BUS 1-3  
FP 30037 - BUS 1-4
  10. START-UP FEED PUMP BUS 4 BREAKER (A47) IS MECHANICALLY AND ELECTRICALLY INTERLOCKED WITH BUS ES BREAKER (A38) SO THAT ONLY ONE BREAKER CAN BE CLOSED AT ANY TIME. THE KEY IS REMOVABLE ONLY WHEN THE BREAKER IS RACKED OUT.
  11. FOR BUS 1-4 ONE LINE DIAGRAM SEE DWG 310009 SHEET 2 OF 2.
  12. DIGITAL CONTROL SYSTEM REMOTE I/O ENCLOSURE SEE FP 70004 & 70010.
  13. 94X TRIPS CONDENSATE POLISHING PUMP MOTOR. 94 TRIPS ALL OTHER MOTORS ON BUS.

NUCLEAR SAFETY RELATED  
AS NOTED

14	7/28/95	—	ACW	DPJ	RM	TPN	INCORP DCR 97-013 DCN-55
13	7/16/93	—	GDC	TPN	TPN	TPN	INCORP DCR 82-19 DCN 00
12	4/3/87	—	CJ	CHK	TPN	RWD	REVISION ON CONFORMANCE SHEET 2 AND NOTE IN REVISION BUS UNIT NUMBER AT NOTE 3 PER FOREIGN PRINTS
REV	DATE	DSGN	DRWN	CHKD	CE	LDE	DESCRIPTION
<b>North Atlantic</b> Energy Service Corporation							
 SEABROOK STATION							4160V SWITCHGEAR BUSES 1-3 AND 1-4 ONE LINE DIAGRAM SHEET 1 OF 2
UNIT 1 1-NHY-							310009







ALL INPUTS TO STATION COMPUTER ARE:  
"NOT NUCLEAR SAFETY RELATED"

NUCLEAR SAFETY RELATED  
"A" TRAIN LOAD GROUP  
(EXCEPT AS NOTED)

REV	DATE	DSGN	DRWN	CHKD	CE	LDE	DESCRIPTION
18	7/17/85	JLM	NFF	NFF	TWG	INCORP DCR 93-016 CA-23	
20	4/2/85	DPJ	JLM	JLM	JLM	INCORP DCR 83-002 DCN 00 & 83-015 DCN 00	
19	7/16/83	GOC	TPN	TPN	TPN	INCORP DCR 02-019 DCN 01	

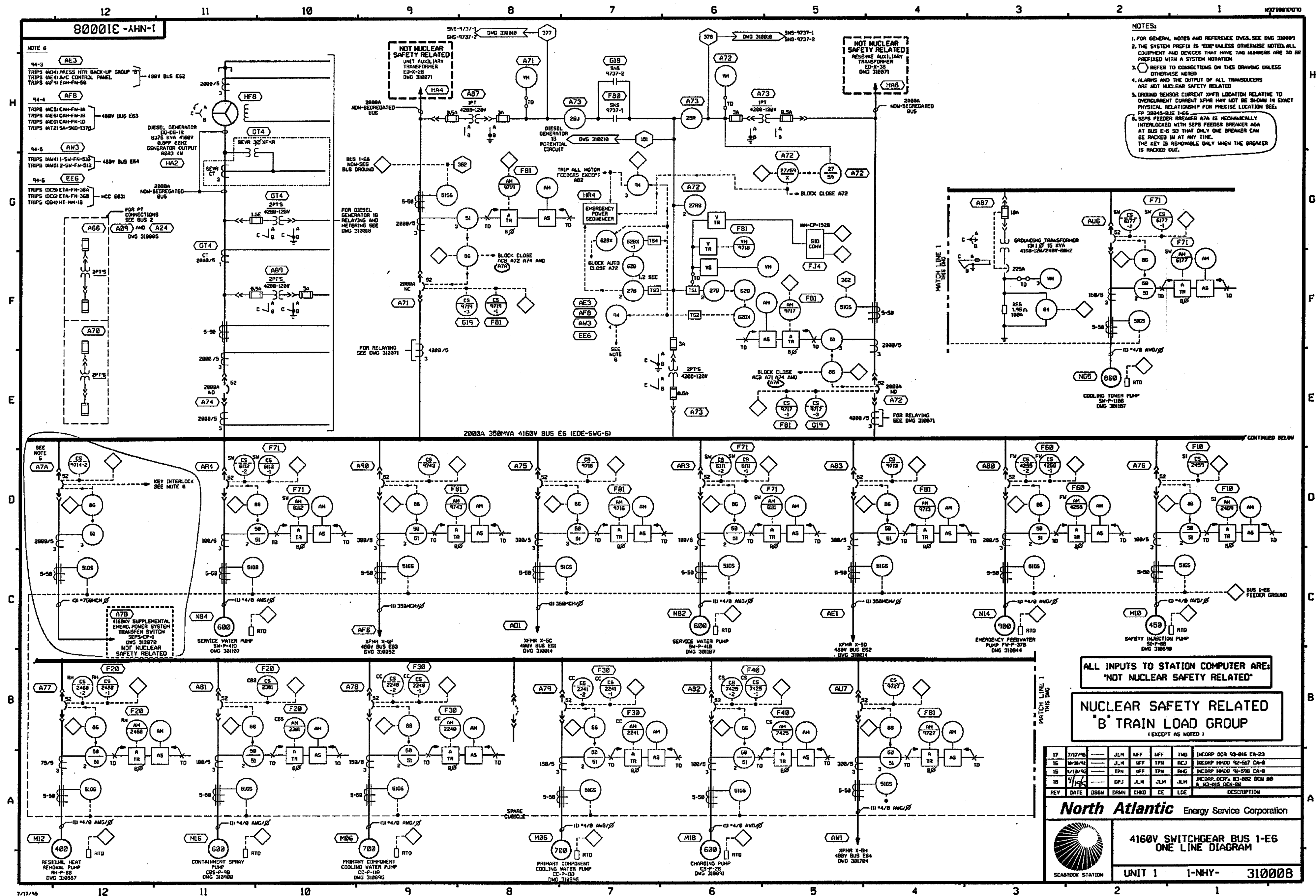
**North Atlantic** Energy Service Corporation

SEABROOK STATION

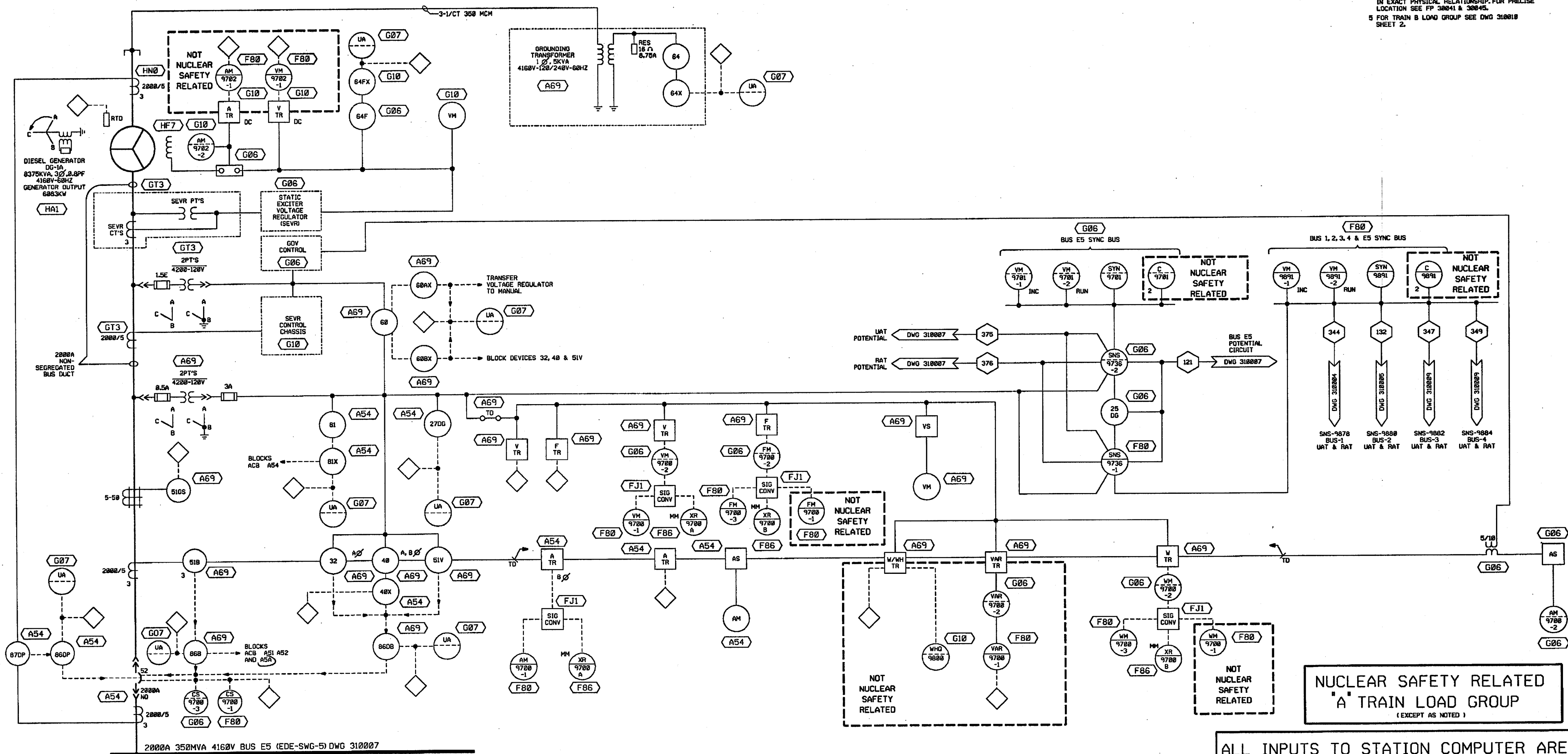
4160V SWITCHGEAR BUS 1-E5  
ONE LINE DIAGRAM

UNIT 1 1-NHY-310007





- 1 FOR GENERAL NOTES SEE DWG 310809
- 2 THE SYSTEM PREFIX IS 'EDE' UNLESS OTHERWISE NOTED. ALL EQUIPMENT & DEVICES THAT HAVE TAG NUMBERS ARE TO BE PREFIXED WITH A SYSTEM NOTATION.
- 3 ALL ALARMS AT MCB ARE NOT NUCLEAR SAFETY RELATED.
- 4 GROUND SENSOR CURRENT X4FR LOCATION RELATIVE TO OVERCURRENT CURRENT IS TO MAY NOT BE SHOWN IN EXACT PHYSICAL RELATIONSHIP. FOR PRECISE LOCATION SEE FP 38041 & 38045.
- 5 FOR TRAIN B LOAD GROUP SEE DWG 310818 SHEET 2.



ALL INPUTS TO STATION COMPUTER ARE:  
"NOT NUCLEAR SAFETY RELATED"

13	11/6/95	---	JLM	NFF	NFF	VCP	INCRP DCR 95-822 CA-8
12	10/30/95	---	JLM	NFF	TPN	RCJ	INCRP MMDD 92-517 CA-8
15	9/24/95	---	JLM	TPN	TPN	TPN	INCRP DCR 83-015 DCN-88
14	7/17/83	---	CHF	JLM	JLM	RCJ	INCRP DCR 81-8885 DCN 89
REV	DATE	DRFM	DRWM	CHKD	CE	LINE	DESCRIPTION

**North Atlantic** Energy Service Corporation



### DIESEL GENERATOR DG-1A AND DG-1B ONE LINE DIAGRAM

UNIT 1 1-NHY- 310010

