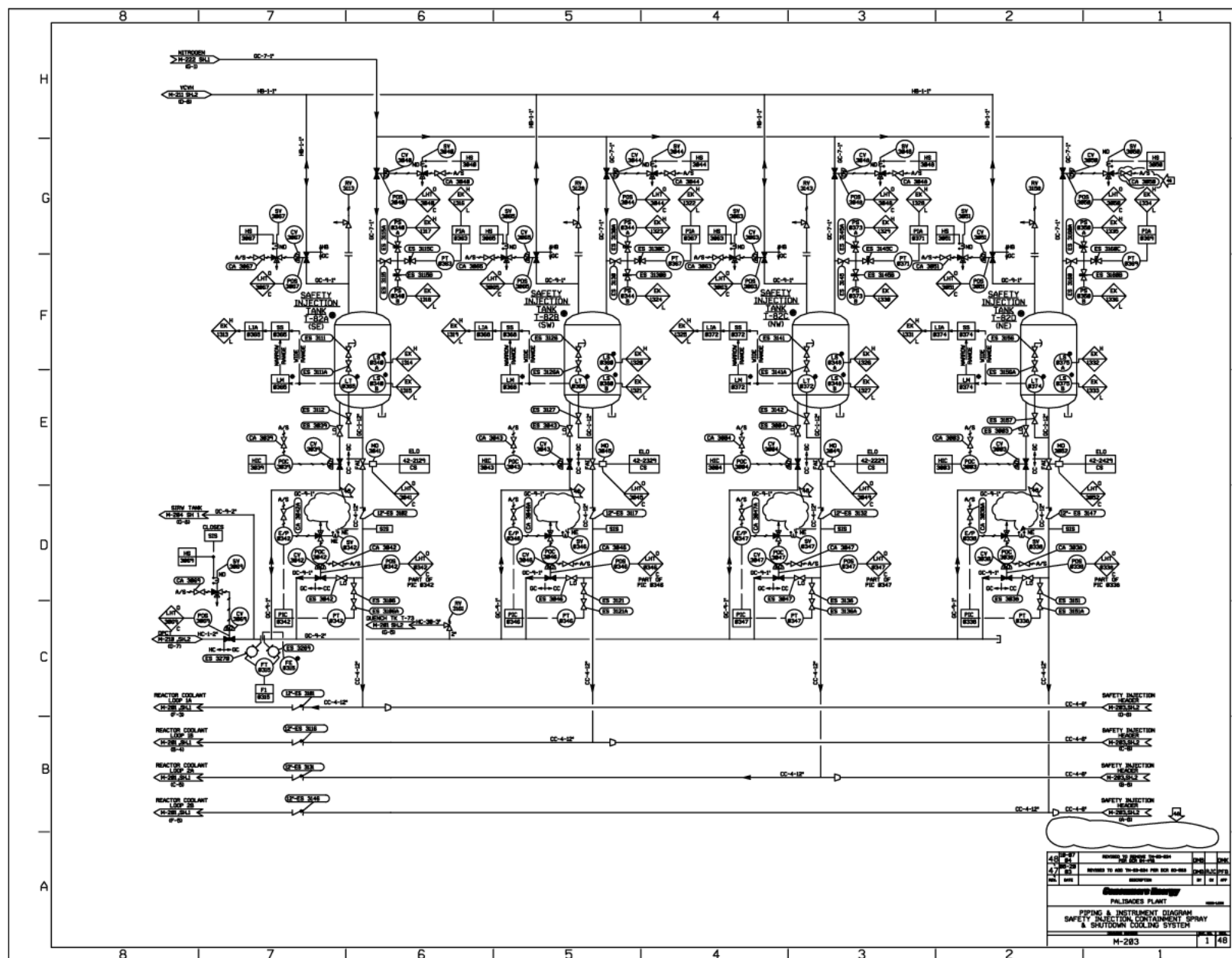
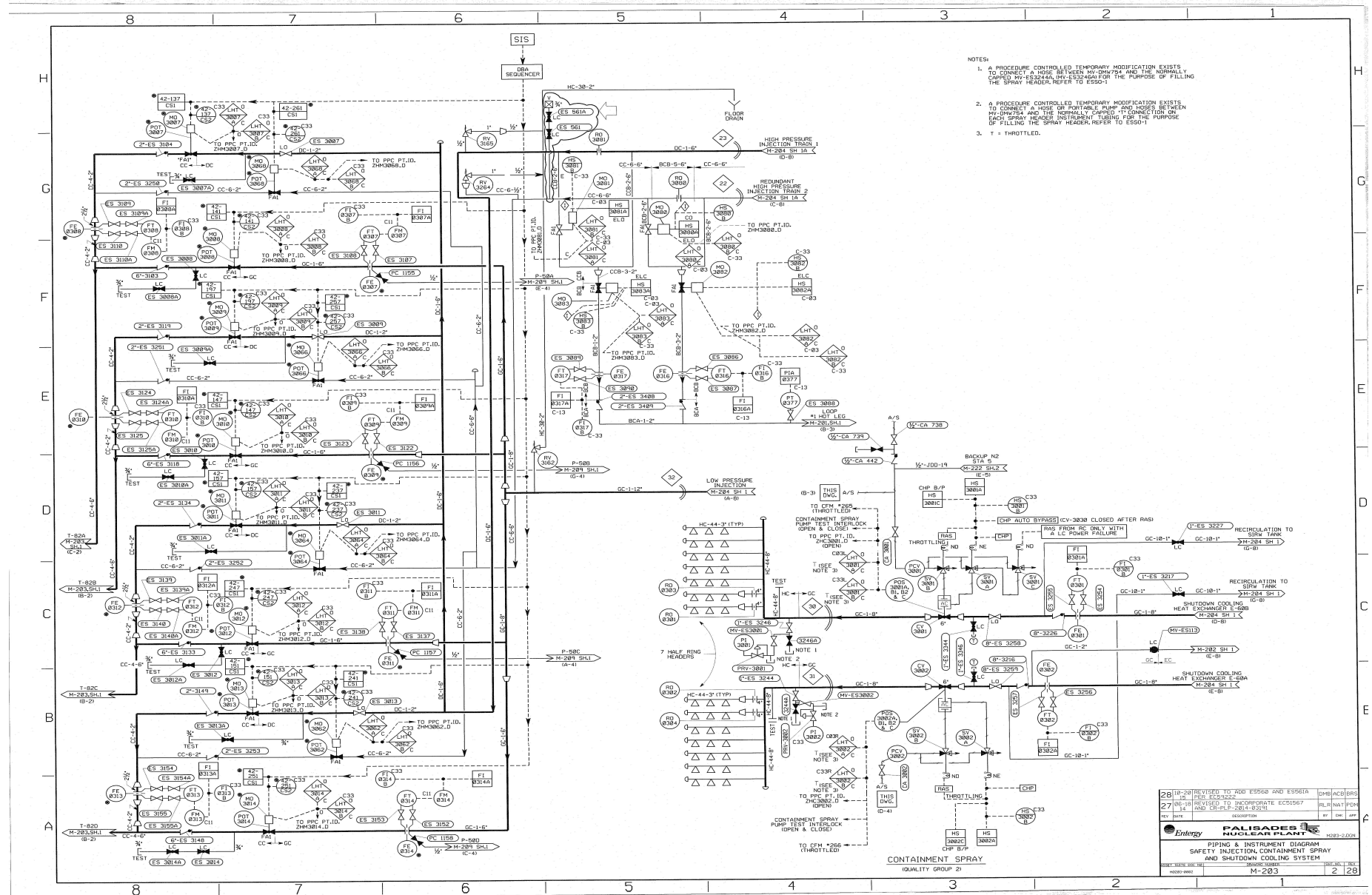


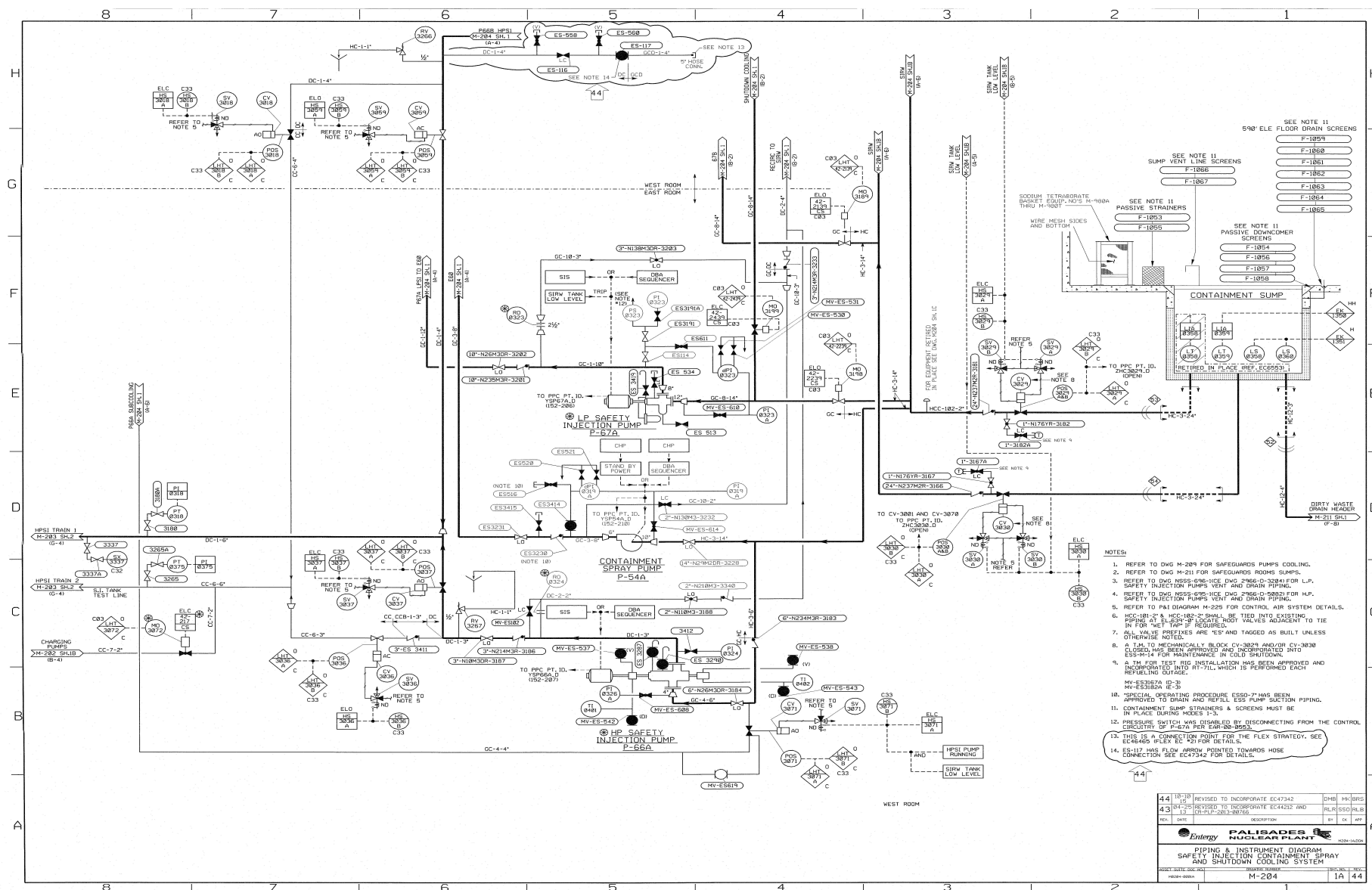
PIPING & INSTRUMENT DIAGRAM
SAFETY INJECTION CONTAINMENT SPRAY AND SHUTDOWN COOLING SYSTEM



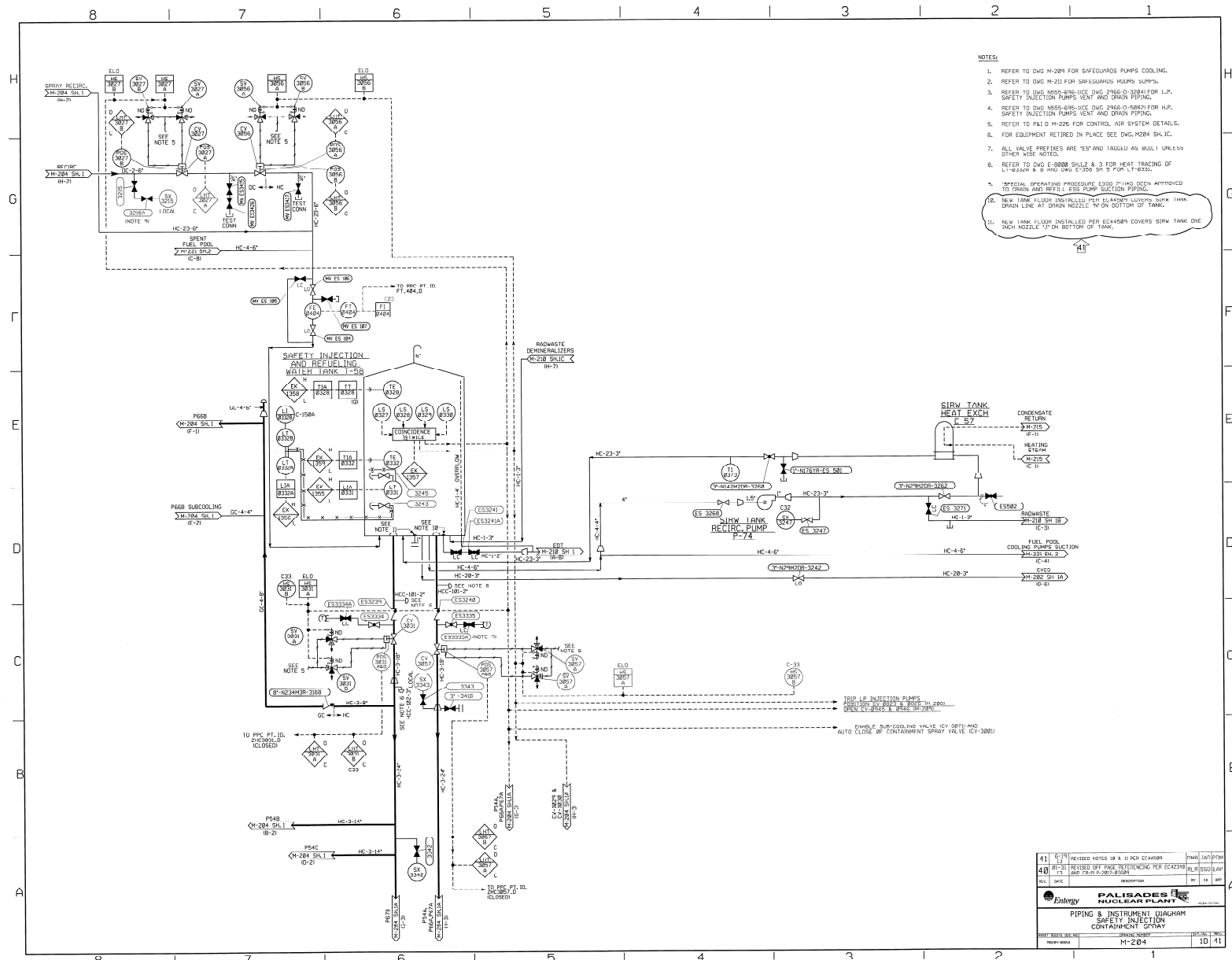
PIPING & INSTRUMENT DIAGRAM
SAFETY INJECTION CONTAINMENT SPRAY AND SHUTDOWN COOLING SYSTEM



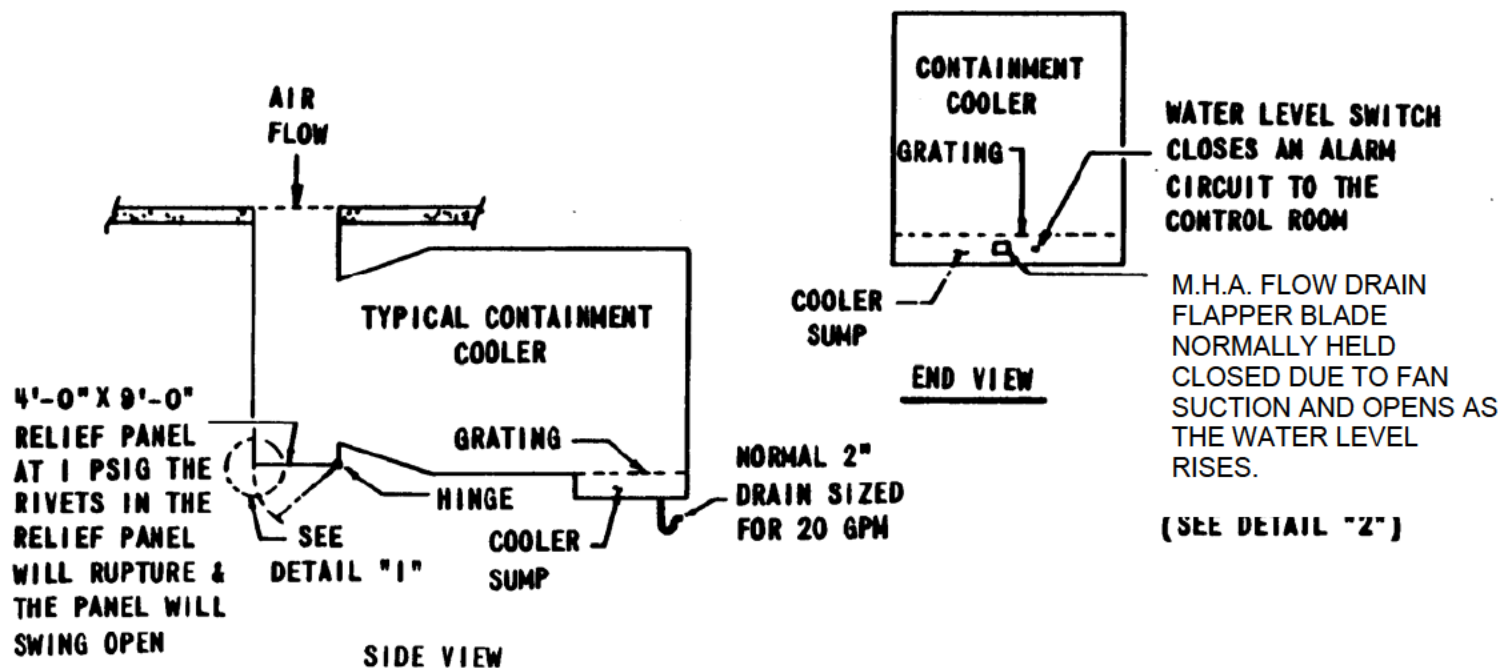
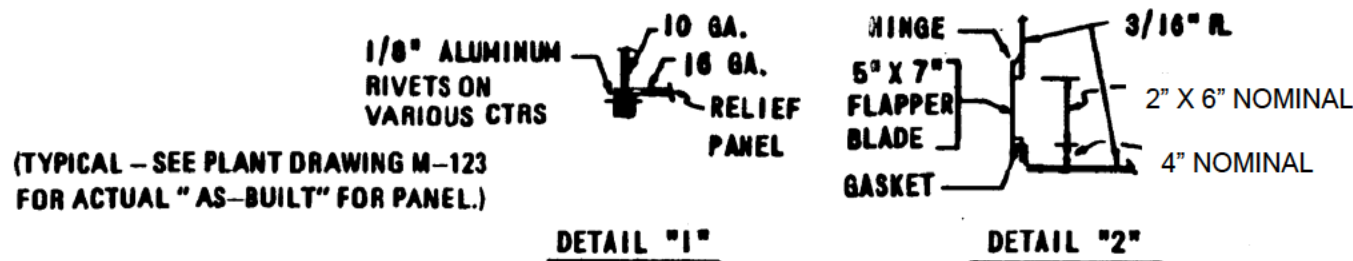
[illegible]



PIPING & INSTRUMENT DIAGRAM
SAFETY INJECTION CONTAINMENT SPRAY

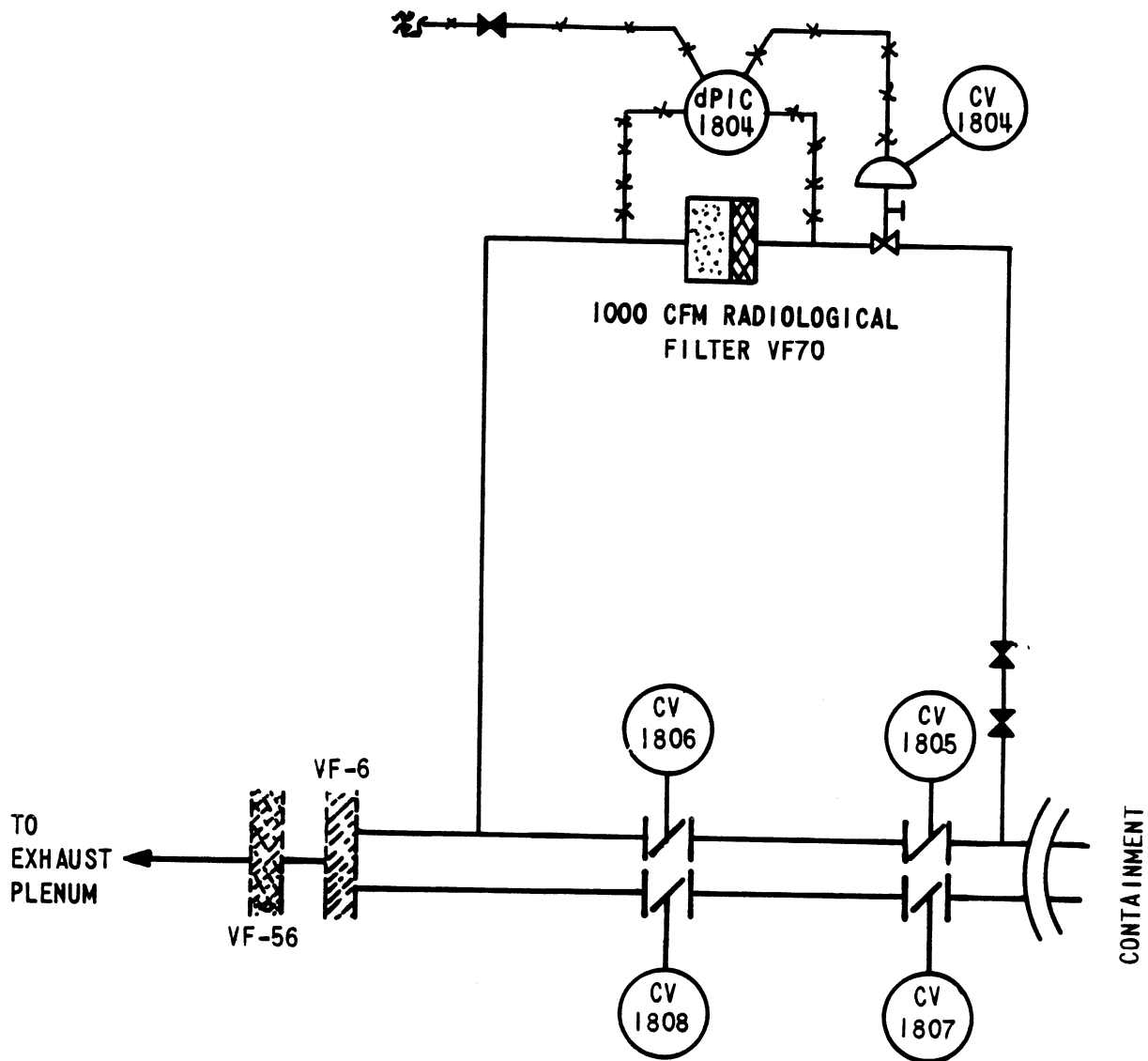


CONTAINMENT AIR COOLERS RELIEF PANEL & CONDENSATE DRAIN

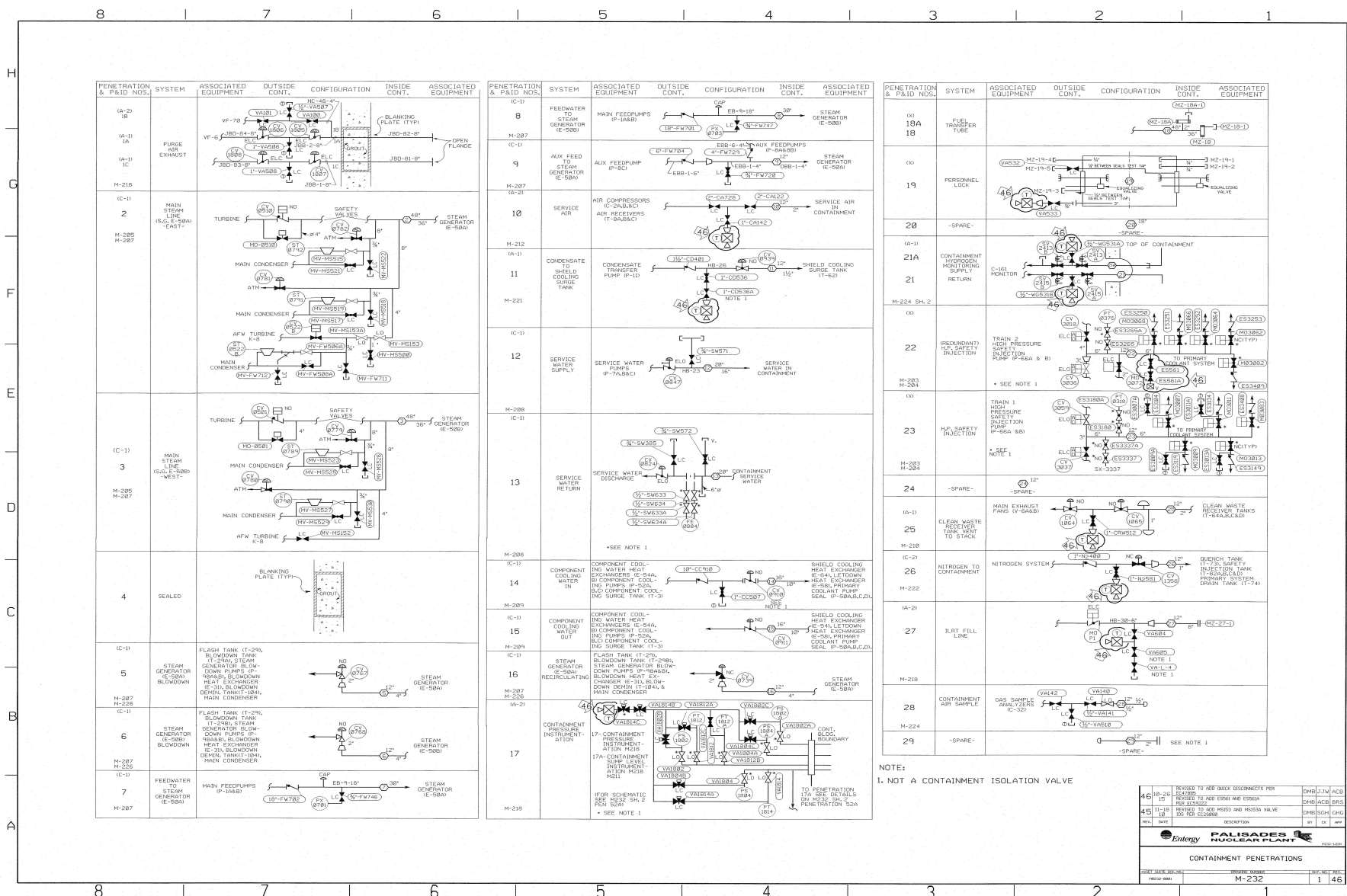


(TYPICAL - SEE PLANT DRAWING M-123 AND M-124 FOR ACTUAL "AS-BUILT" FOR EACH PANEL.)

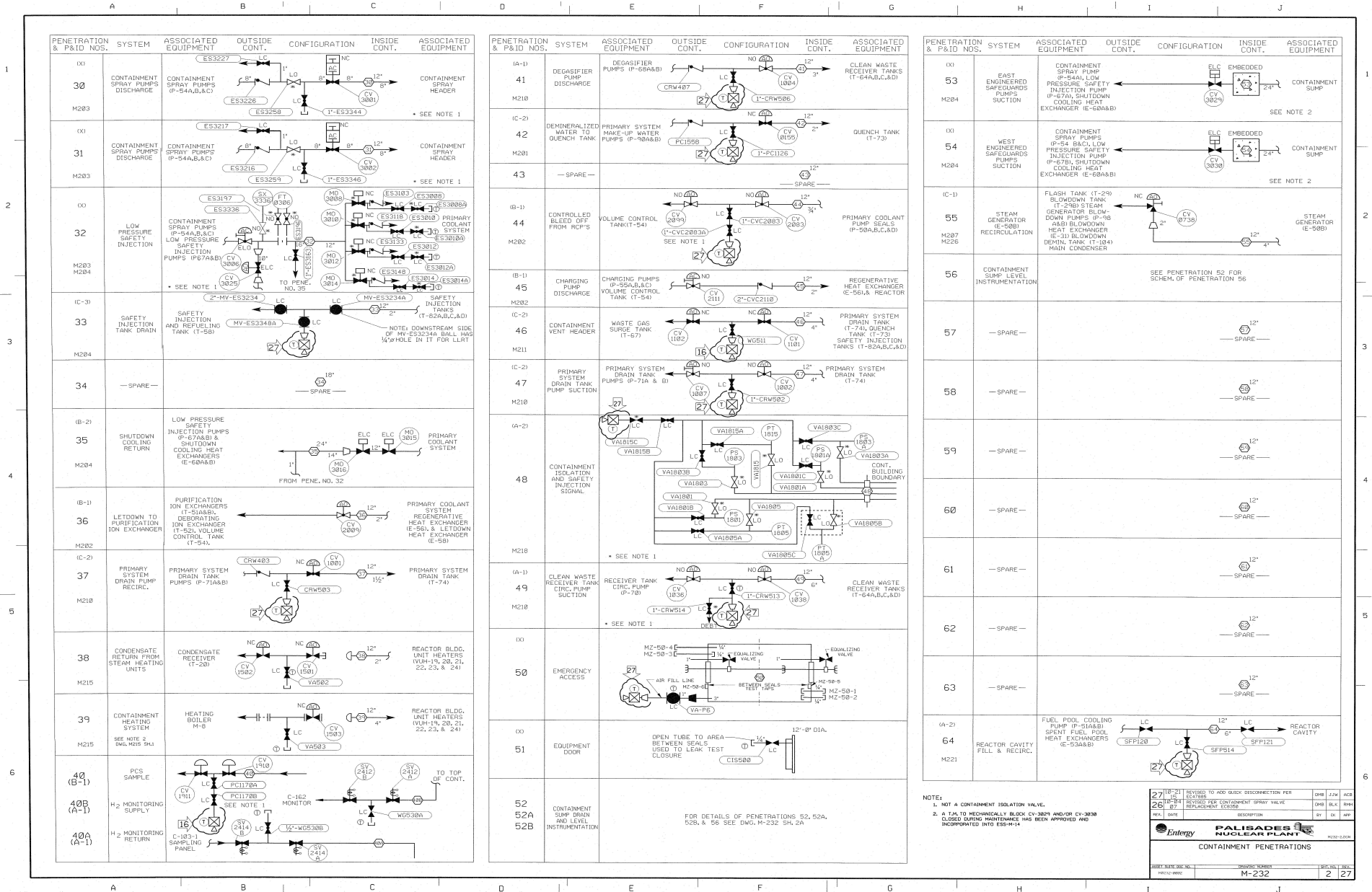
CONTAINMENT VENT FILTER



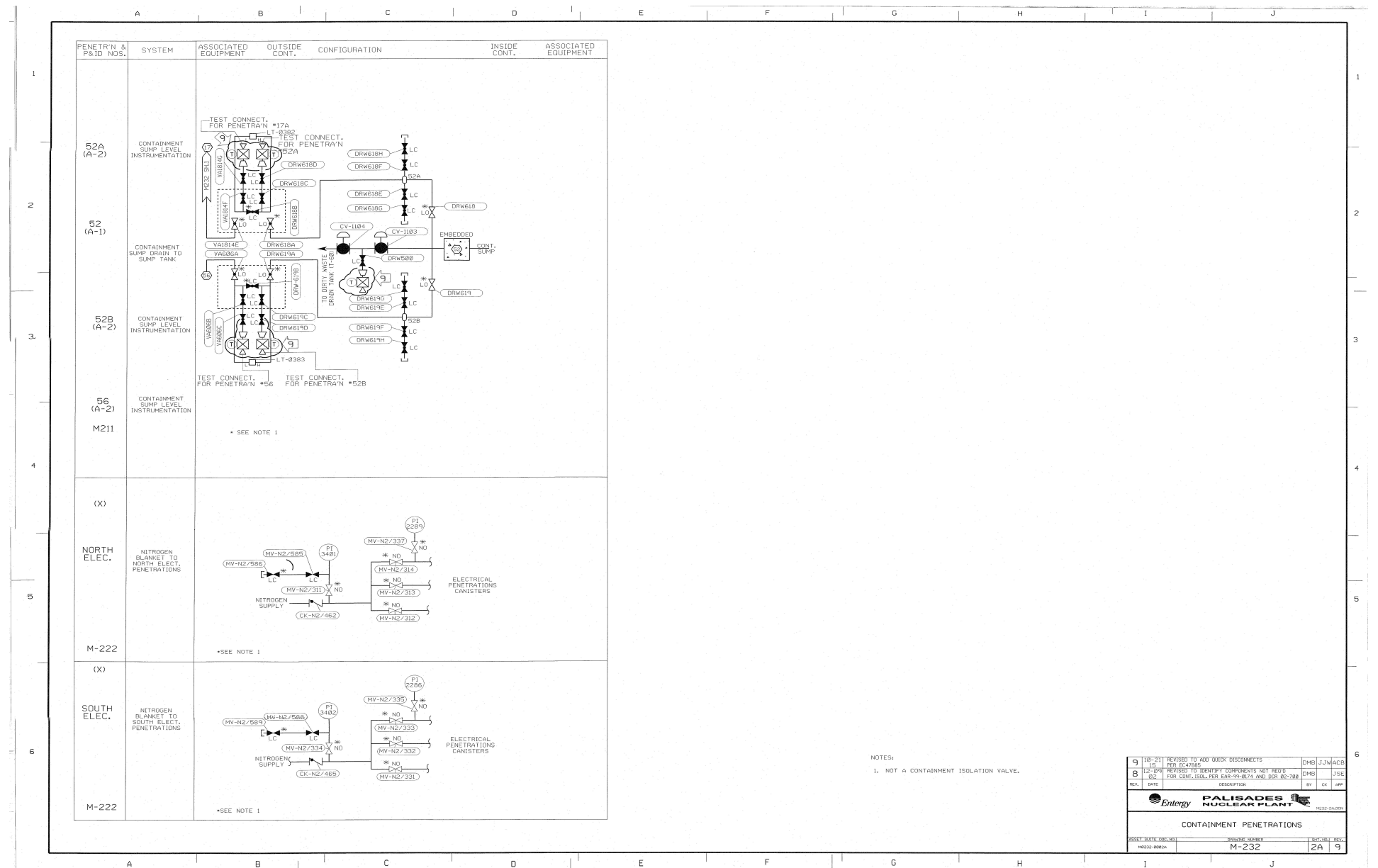
CONTAINMENT PENETRATIONS



CONTAINMENT PENETRATIONS



CONTAINMENT PENETRATIONS



CONTAINMENT PENETRATIONS

PENETRATION NO. & P.&ID	SYSTEM	ASSOCIATED EQUIPMENT	OUTSIDE CONT.	CONFIGURATION	INSIDE CONT.	ASSOCIATED EQUIPMENT
(C-2) 65 M-212	INSTRUMENT AIR	AIR DRYER (M-21) AIR RECEIVER TANKS (T-BAB&C) AIR COMPRESSORS (C-2A,B,&C)	2"-283-CA488 CV-101 3/4"-CAE12 LC 3/4"-CAE11	NO 12"	VARIOUS INSTRUMENTS	
(A-2) 66 M-21B	ILRT INSTRUMENT LINE	ILRT INSTRUMENTATION	V/L-6 VABR2 VABR1 VABR3	NO 12"	TO ATMO SPHERE	
(A-1) 67 M-210	CLEAN WASTE RECEIVER TANK PUMP RECIRC.	RECEIVER TANK CIRC. PUMP (P-203)	CRW488 CV-1017 LC CRW515	NO 12"	CLEAN WASTE RECEIVER TANK (T-6AA,B,C,D)	
(A-1) 68 M-21B	AIR SUPPLY TO AIR ROOM	AIR SPACE PURGE FAN (V-46)	CV-1014 ELC VC-1013 LC VA509	OPEN FLANGE 12"		

PENETRATION NO. & P.&ID	SYSTEM	ASSOCIATED EQUIPMENT	OUTSIDE CONT.	CONFIGURATION	INSIDE CONT.	ASSOCIATED EQUIPMENT
(A-1) 69 M-210	CLEAN WASTE RECEIVER TANK PUMP SUCTION	RECEIVER TANK PUMP (P-6BA&B) RADWASTE DEMIN'S (T-55A,B,C,&D)	CV-1014 LC 1"-CRW518	NO 12"	CLEAN WASTE RECEIVER TANK (T-6AA,B,C,&D)	
70	— SPARE —			SPARE 12"		
71	— SPARE —			SPARE 12"		
(A-2) 72 M-221	REACTOR REFUELING CAVITY DRAIN	FUEL POOL COOLING PUMPS (P-21A&B) SPENT FUEL POOL HEAT EXCHANGERS (E-53A&B)	SFP118 LC 1"-SFP215 SFP117	NO 12"	REACTOR CAVITY	
(C-1) 73	AUX FEED TO STEAM GENERATOR (E-50B)	AUX FEEDPUMP (P-8C) EBB-5-4" 4"-CK-FW5728 5"-CK-FW5703 EBB-2'-6"	AUX FEEDPUMPS (P-8A&B) LC 3/4"-MV-FW718	NO 12"	TO STEAM GENERATOR (E-50B)	

PENETRATION NO. & P.&ID	SYSTEM	ASSOCIATED EQUIPMENT	OUTSIDE CONT.	CONFIGURATION	INSIDE CONT.	ASSOCIATED EQUIPMENT
(X) NORTH ELEC H-222	NITROGEN BLANKET TO NORTH ELECT PENETRATIONS					FOR DETAILS SEE M-232 SH.2A
(X) SOUTH ELEC H-222	NITROGEN BLANKET TO SOUTH ELECT PENETRATIONS					FOR DETAILS SEE M-232 SH.2A

NOTES:
1. NOT A CONTAINMENT ISOLATION VALVE.

16 H-21 REVISION TO ADD ORCA DISCONNECTS DHB LJV RCB
15 H-21 REVISION TO ADD T-SHAPE PENETRATIONS FOR USE OF CONDUITS DHB BJR TLO
REV. DATE DESCRIPTION BY DR AFF

Palisades Nuclear Plant

CONTAINMENT PENETRATIONS

SCALE: 1/8" = 1'-0"

FIGURE NUMBER: H-232

FIGURE INDEX: 3

REACTOR CAVITY FLOODING SYSTEM

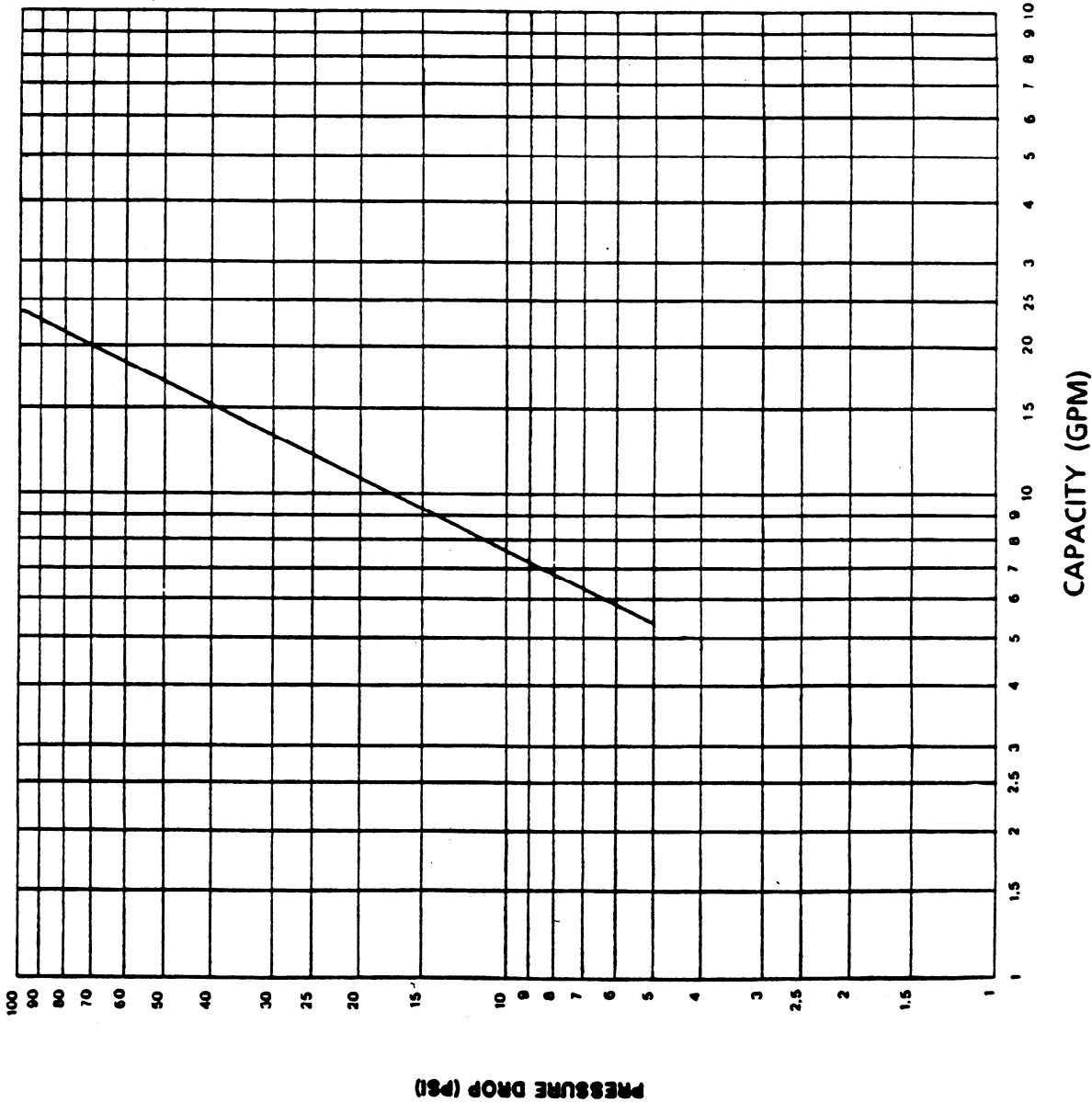
Portions of this page have been
redacted per 10 CFR 2.390(d)(1).

CAPACITY CURVE 1713A NOZZLE

NOTE:
MINIMUM FLOW IS 5.5 (GPM)

FLOW DATA

Pressure Drop (PSI)	Flow (GPM)
10	7.6
20	10.7
30	13.3
40	15.2
50	17.0



R-5334