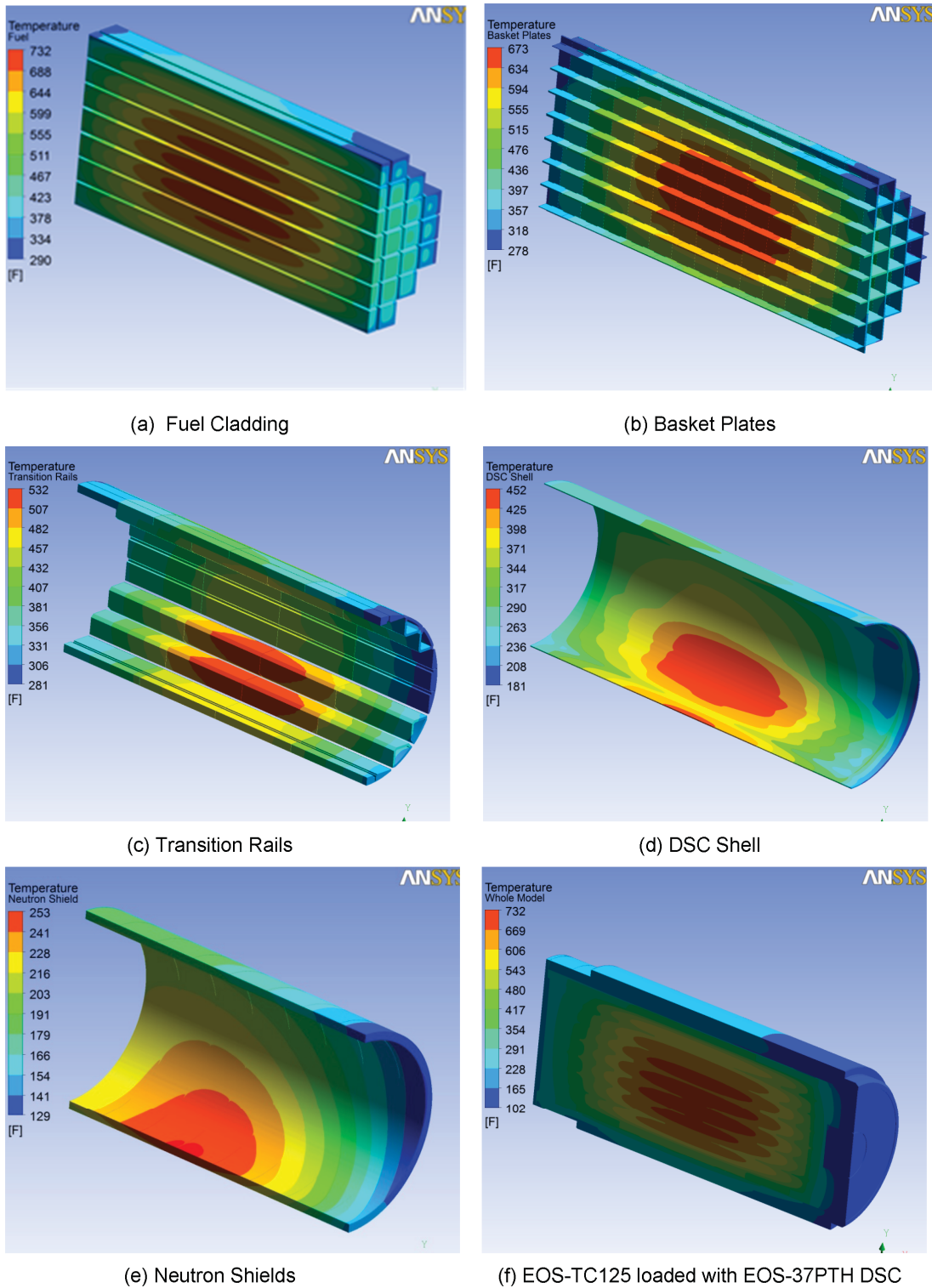
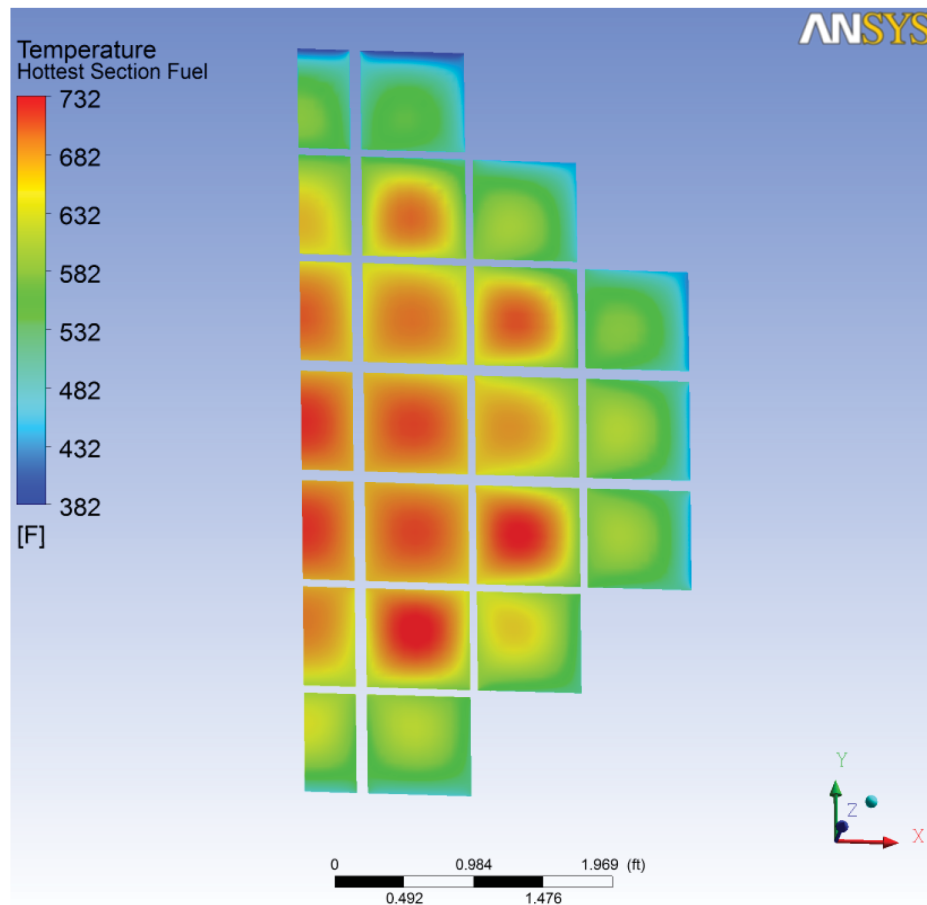


(g) Fuel Cladding at the Hottest Cross Section

**Figure 4-35**  
**Temperature Distribution of EOS-TC125 Loaded with EOS-37PTH DSC at**  
**36.35 kW, Load Case # 10**  
2 Pages



**Figure 4-36**  
**Temperature Distribution of EOS-TC125 Loaded with EOS-37PTH DSC at**  
**50 kW, Air Circulation and Load Case # 6a**  
2 Pages

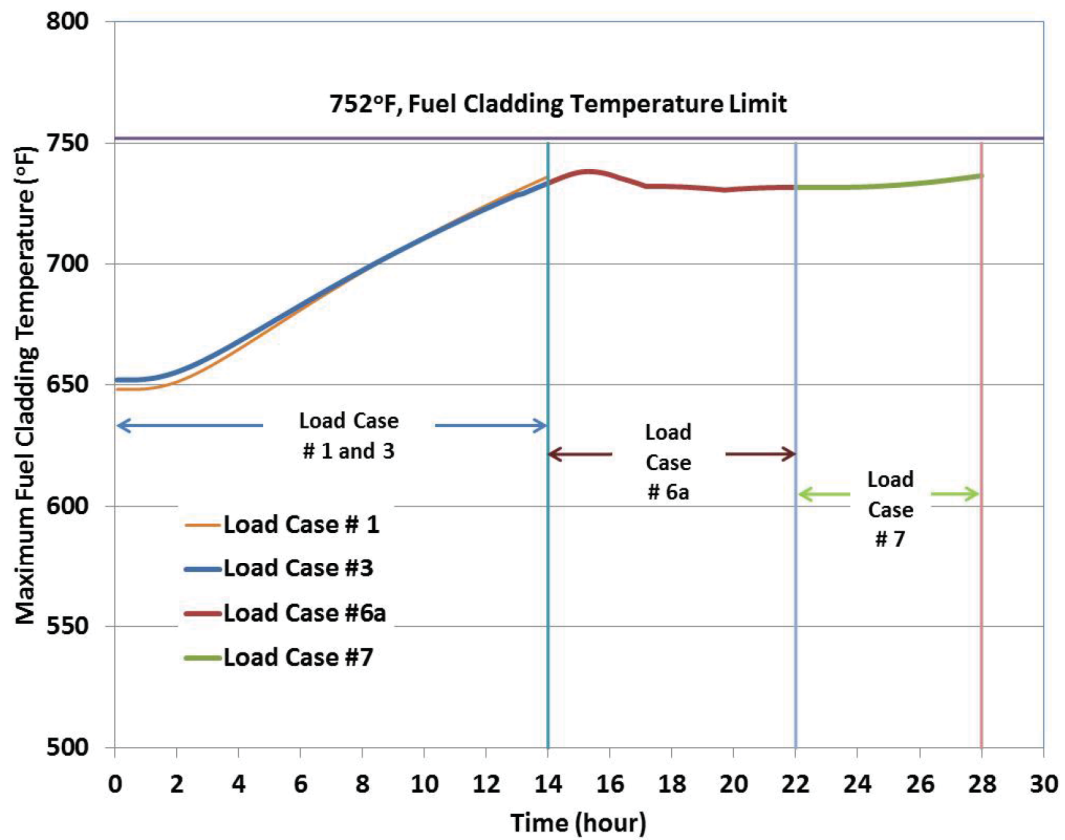


(g) Hottest Section in Fuel Cladding

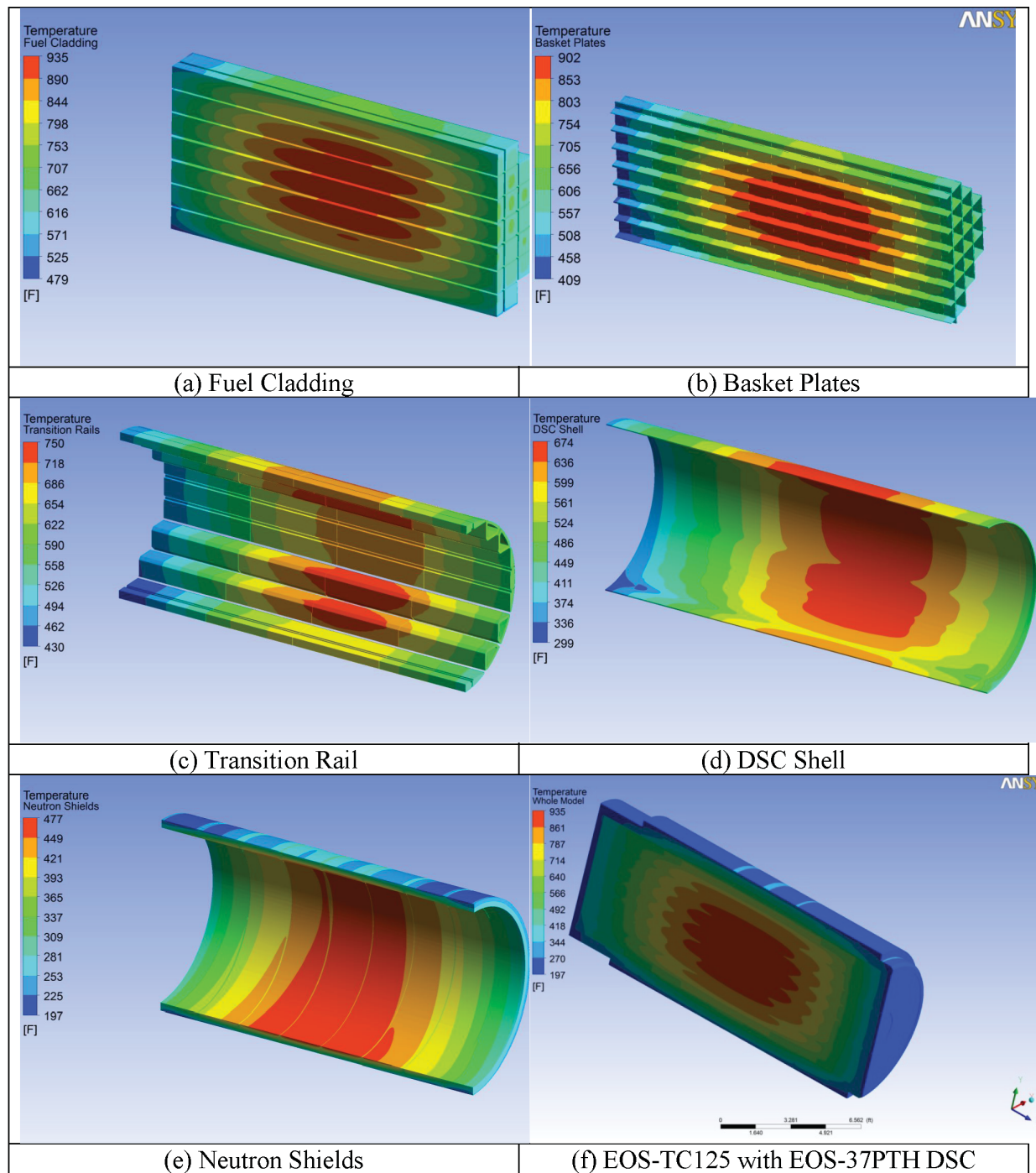
**Figure 4-36**  
**Temperature Distribution of EOS-TC125 Loaded with EOS-37PTH DSC at**  
**50 kW, Air Circulation and Load Case # 6a**  
2 Pages

Proprietary Information on This Page  
Withheld Pursuant to 10 CFR 2.390

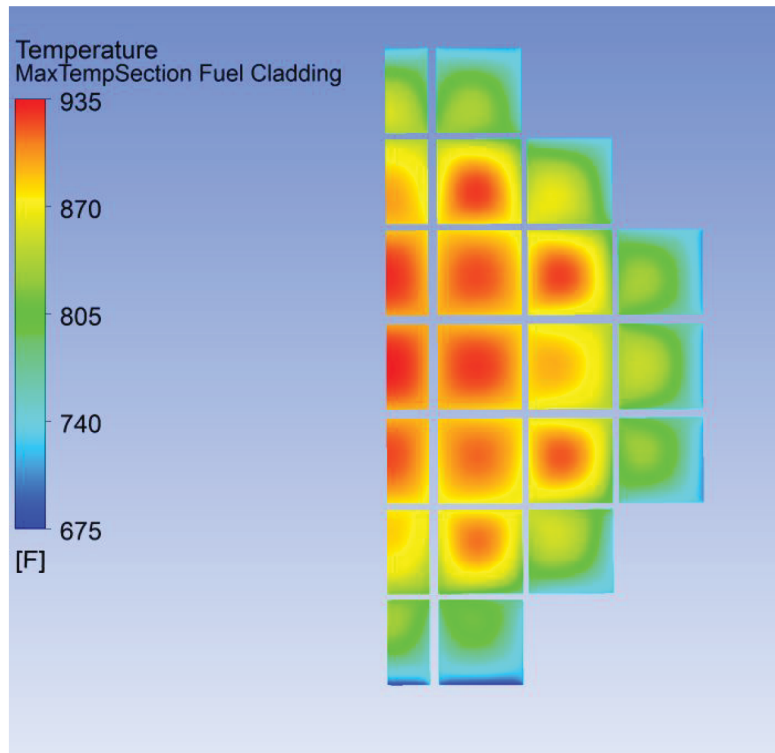




**Figure 4-38**  
**Maximum Fuel Cladding Temperature Versus Time in Transient Cases,**  
**Load Cases # 1, 3, 6a, and 7**



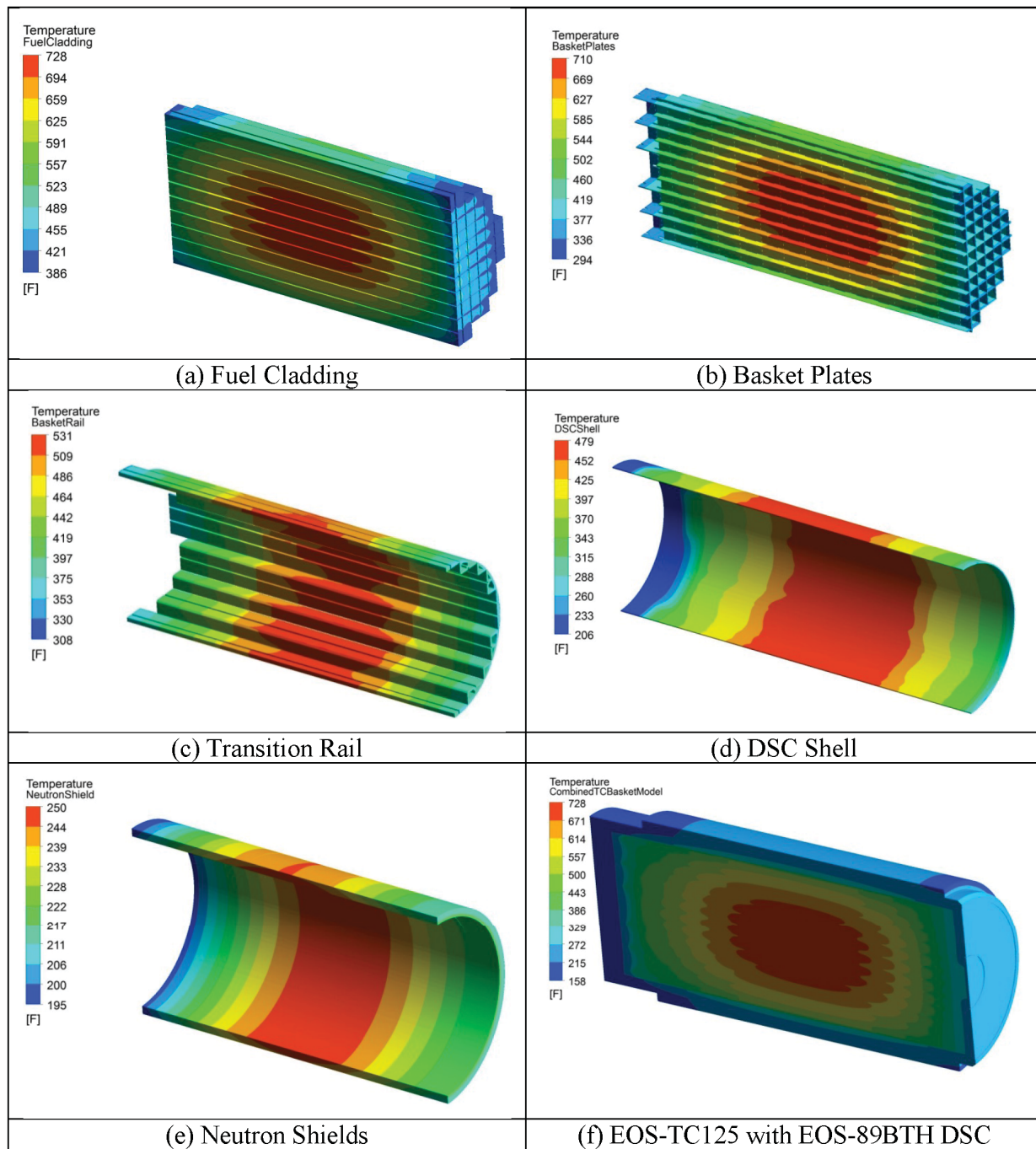
**Figure 4-39**  
**Temperature Distribution of EOS-TC125 Loaded with EOS-37PTH DSC at**  
**50 kW, Accident, Loss of Neutron Shield and Load Case # 5**  
 2 Pages



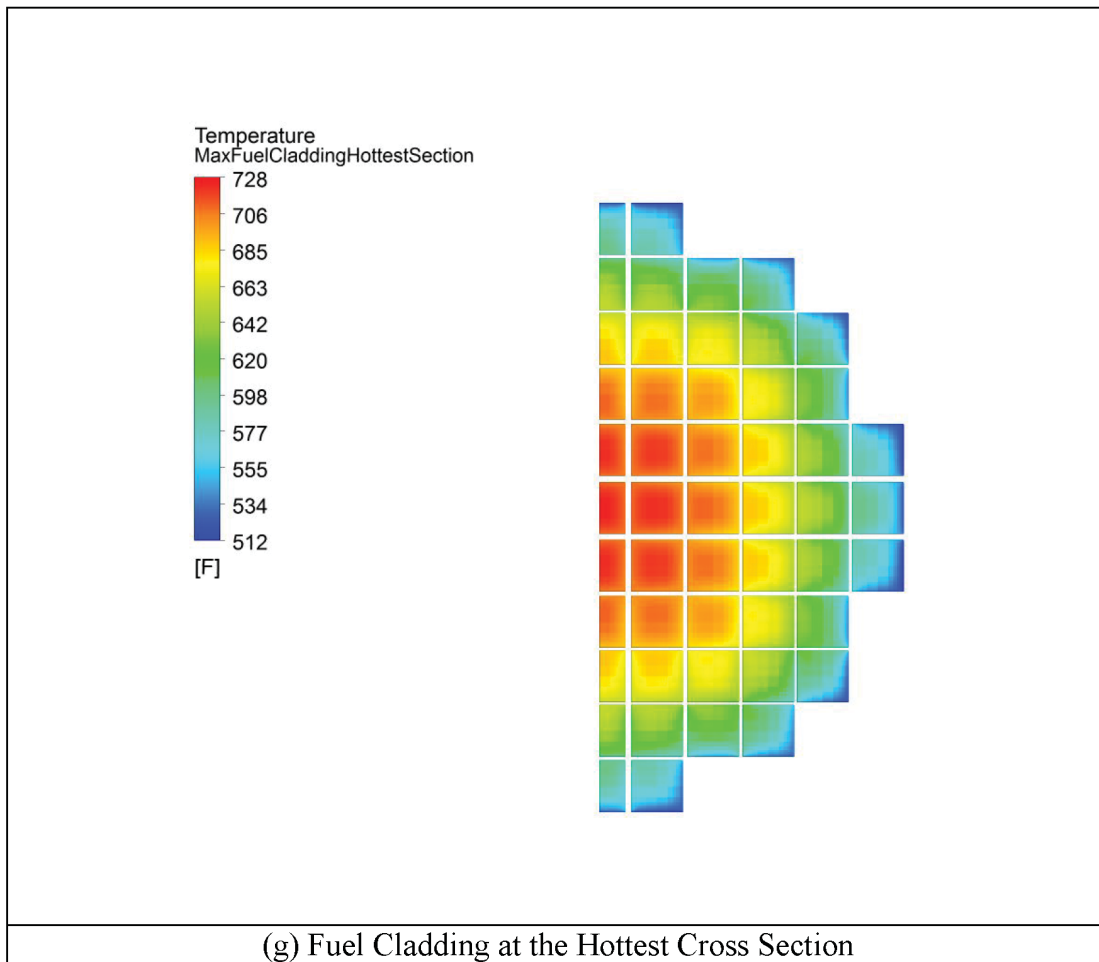
(g) Fuel Cladding at the Hottest Cross Section

**Figure 4-39**  
**Temperature Distribution of EOS-TC125 Loaded with EOS-37PTH DSC at**  
**50 kW, Accident, Loss of Neutron Shield and Load Case # 5**  
2 Pages

Proprietary Information on This Page  
Withheld Pursuant to 10 CFR 2.390

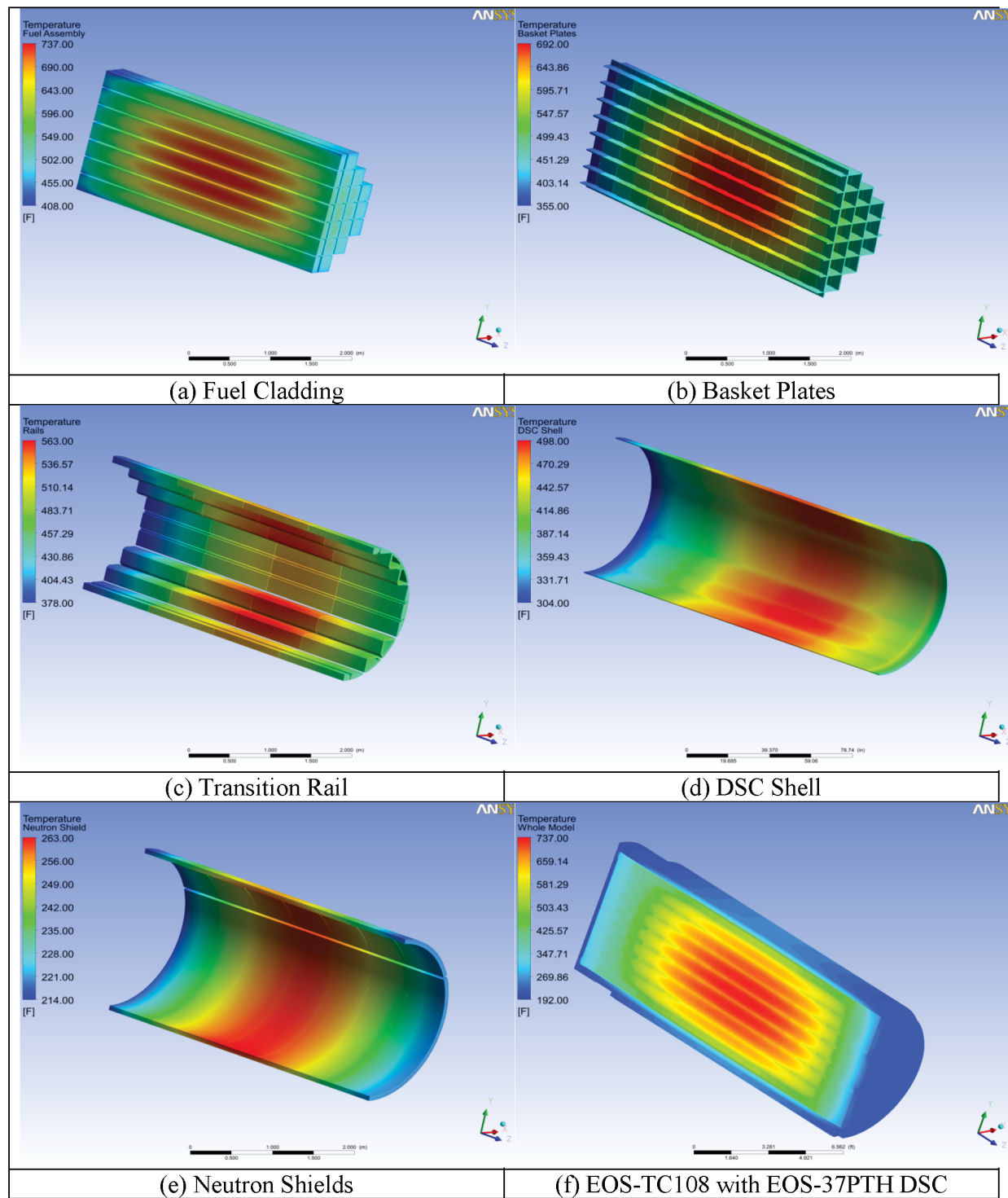


**Figure 4-41**  
**Temperature Profiles for EOS-TC125 Loaded with EOS-89BTH DSC at**  
**34.44 kW, Normal Hot Vertical Operations (Load Case #8)**  
 2 Pages



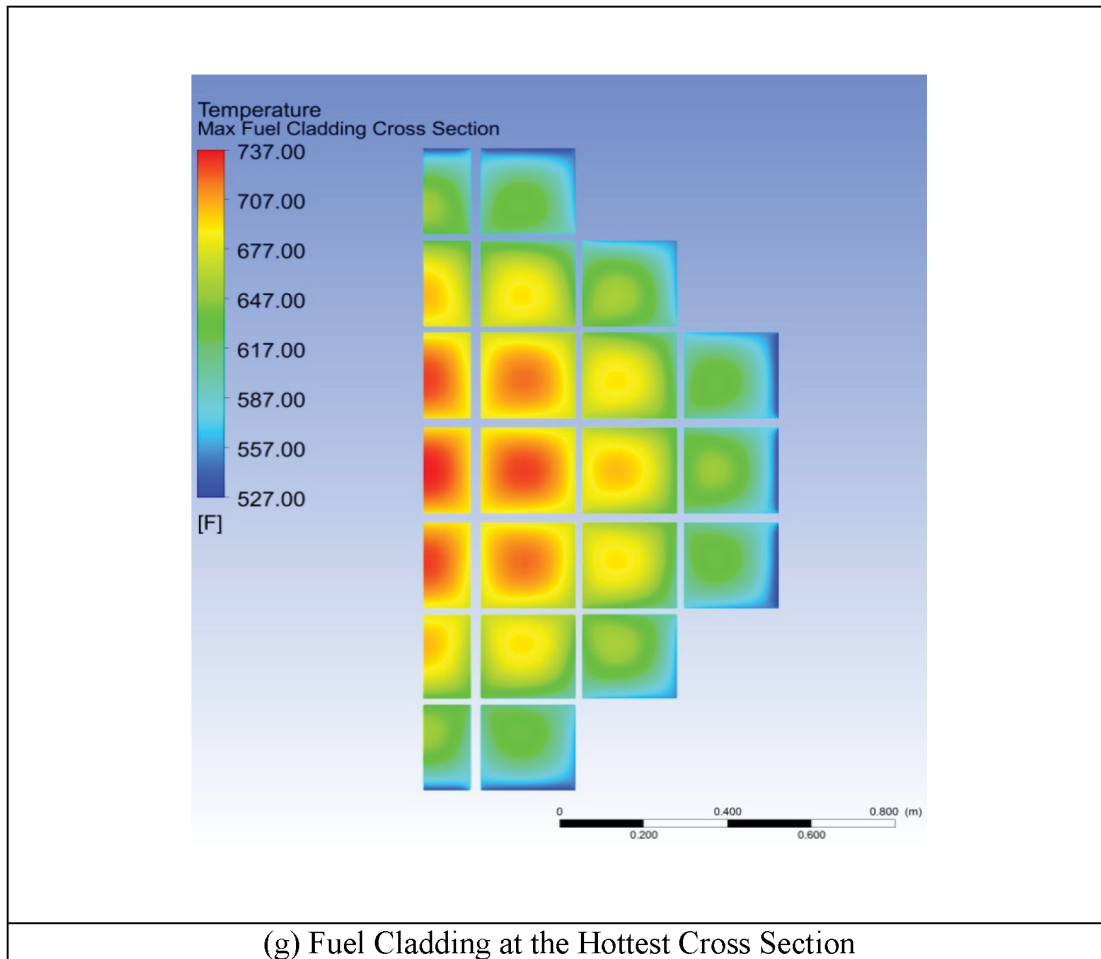
**Figure 4-41**  
**Temperature Profiles for EOS-TC125 Loaded with EOS-89BTH DSC at**  
**34.44 kW, Normal Hot Vertical Operations (Load Case #8)**  
2 Pages

Proprietary Information on Pages 4-210 through 4-213  
Withheld Pursuant to 10 CFR 2.390

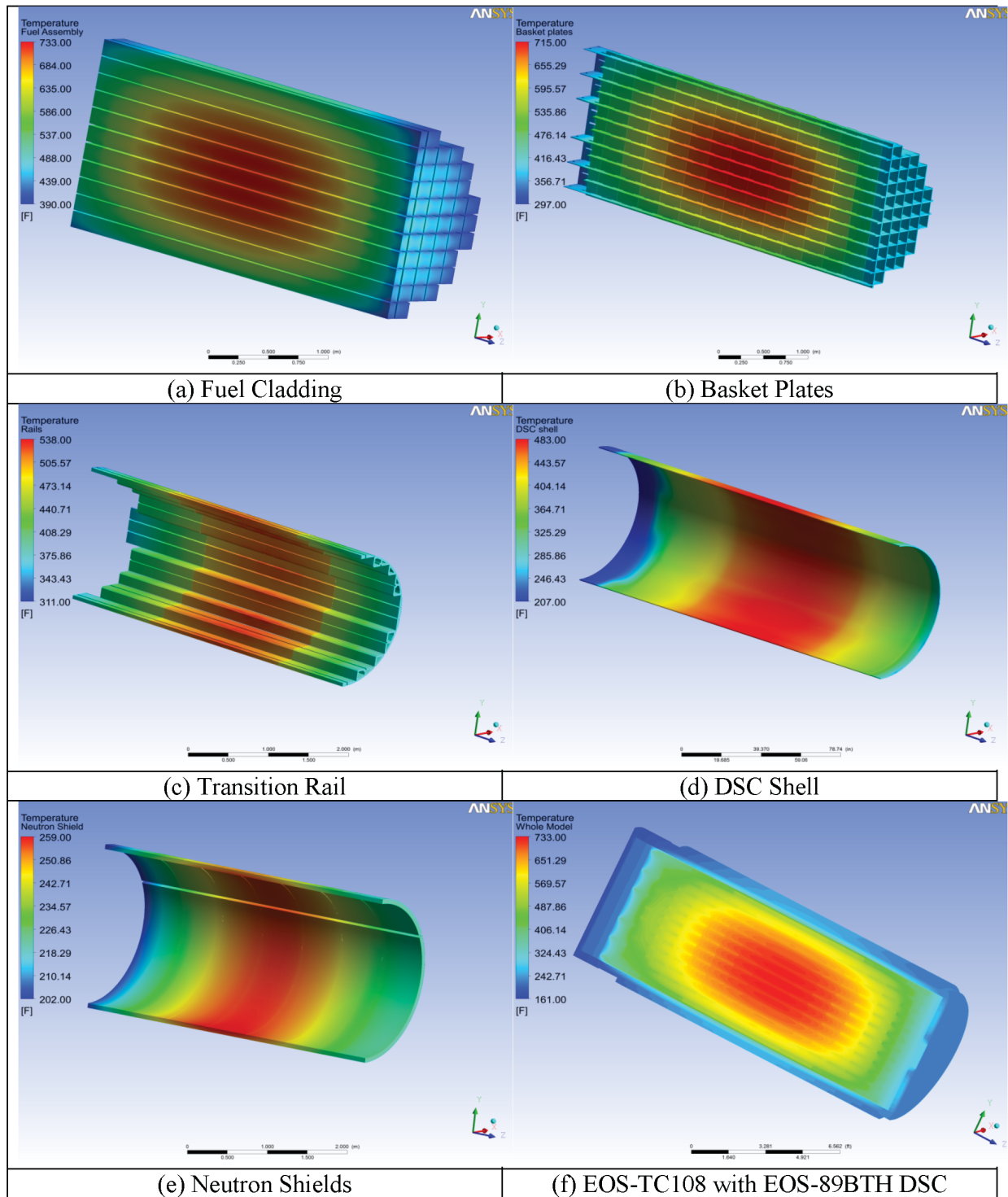


**Figure 4-45**  
**Temperature Distributions for EOS-TC108 with EOS-37PTH DSC at 36.35**  
**kW, Load Case #8**  
 2 Pages

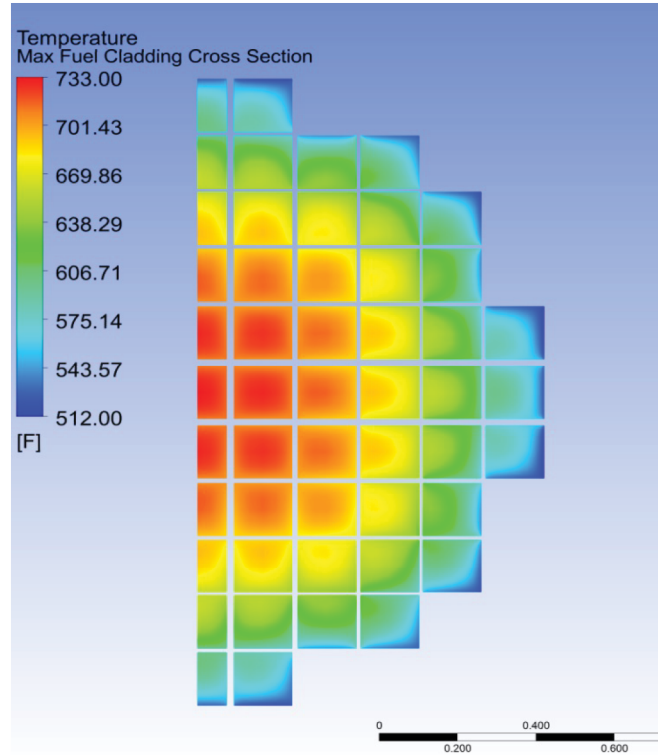




**Figure 4-45**  
**Temperature Distributions for EOS-TC108 with EOS-37PTH DSC at 36.35**  
**kW, Load Case #8**  
2 Pages



**Figure 4-46**  
**Temperature Distributions for EOS-TC108 Loaded with EOS-89BTH DSC**  
**at 34.44 kW, Load Case #8**  
 2 Pages



(g) Fuel Cladding at the Hottest Cross Section

**Figure 4-46**  
**Temperature Distributions for EOS-TC108 Loaded with EOS-89BTH DSC**  
**at 34.44 kW, Load Case #8**  
2 Pages