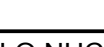
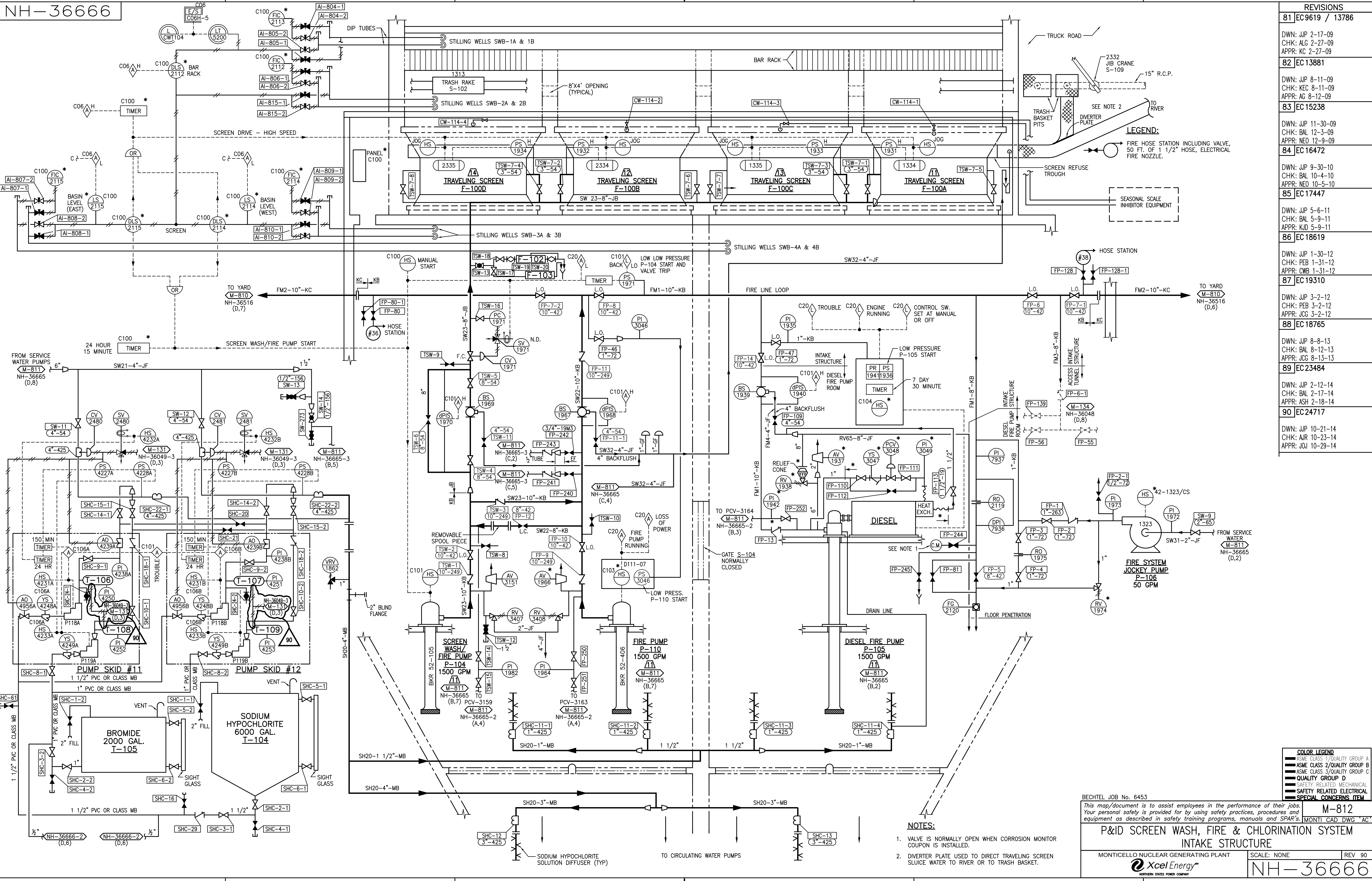




RHRSW PUMP NO.	STRAINER NO.	STRAINER SELECTOR VALVE	EQUINIZER VALVE	STRAINER DIFF PRESS INSTR
P-109A	BS-1953 BS-1954	RHRSW-64-1	RHRSW-65-1	DPIS-1955-1
P-109B	BS-1955 BS-1956	RHRSW-64-2	RHRSW-65-2	DPIS-1955-2
P-109C	BS-1957 BS-1958	RHRSW-64-3	RHRSW-65-3	DPIS-1955-3
P-109D	BS-1959 BS-1960	RHRSW-64-4	RHRSW-65-4	DPIS-1955-4

<b>NOTES:</b> 1. 3/4" MARK 130 VENT AT ALL HIGH POINTS IN LINE AND 1" MARK 19 DRAIN VALVE AT ALL LOW POINTS. 2. LIMITED FLOW IS ALLOWED WHEN THE SURGE CHECK VALVE IS IN THE CHECKED POSITION. 3. CORROSION MONITOR COUPON IS ABANDONED.		<b>COLOR LEGEND</b> ■ ASME CLASS 1/QUALITY GROUP A ■ ASME CLASS 2/QUALITY GROUP B ■ ASME CLASS 3/QUALITY GROUP C ■ QUALITY GROUP D ■ SAFETY RELATED MECHANICAL ■ SAFETY RELATED ELECTRICAL ■ SPECIAL CONCERNS ITEM
<i>This map/document is to assist employees in the performance of their jobs. Your personal safety is provided for by using safety practices, procedures and equipment as described in safety training programs, manuals and SPAR's.</i>		M-811 MONTH CAD DWG 'AY'
P&ID SERVICE WATER SYSTEM & MAKE-UP INTAKE STRUCTURE		
MONTICELLO NUCLEAR GENERATING PLANT  NORTHERN STATES POWER COMPANY	SCALE: NONE	REV 97 NH-36665



REVISIONS	
81	EC9619 / 13786
DWN: JJP 2-17-09 CHK: ALG 2-27-09 APPR: KC 2-27-09	
82	EC13881
DWN: JJP 8-11-09 CHK: KEC 8-11-09 APPR: KC 8-12-09	
83	EC15238
DWN: JJP 11-30-09 CHK: BAL 12-3-09 APPR: NEQ 12-9-09	
84	EC16472
DWN: JJP 9-30-10 CHK: BAL 10-4-10 APPR: NEQ 10-5-10	
85	EC17447
DWN: JJP 5-6-11 CHK: BAL 5-9-11 APPR: JCG 5-9-11	
86	EC18619
DWN: JJP 1-30-12 CHK: PEB 1-31-12 APPR: JCG 1-31-12	
87	EC19310
DWN: JJP 3-2-12 CHK: PEB 3-2-12 APPR: JCG 3-2-12	
88	EC18765
DWN: JJP 8-8-13 CHK: BAL 8-12-13 APPR: JCG 8-13-13	
89	EC23484
DWN: JJP 2-12-14 CHK: BAL 2-17-14 APPR: AJR 2-18-14	
90	EC24717
DWN: JJP 10-21-14 CHK: AJR 10-23-14 APPR: JOJ 10-29-14	

COLOR LEGEND	
—	ASME CLASS 1/QUALITY GROUP A
—	ASME CLASS 2/QUALITY GROUP B
—	ASME CLASS 3/QUALITY GROUP C
—	QUALITY GROUP D
—	SAFETY RELATED MECHANICAL
—	SAFETY RELATED ELECTRICAL
—	SPECIAL CONCERNS ITEM

BECHTEL JOB No. 6453

This map/document is to assist employees in the performance of their jobs. Your personal safety is provided for by using safety practices, procedures and equipment as described in safety training programs, manuals and SPAR's.

**P&ID SCREEN WASH, FIRE & CHLORINATION SYSTEM INTAKE STRUCTURE**

MONTICELLO NUCLEAR GENERATING PLANT

**M-812**

SCALE: NONE

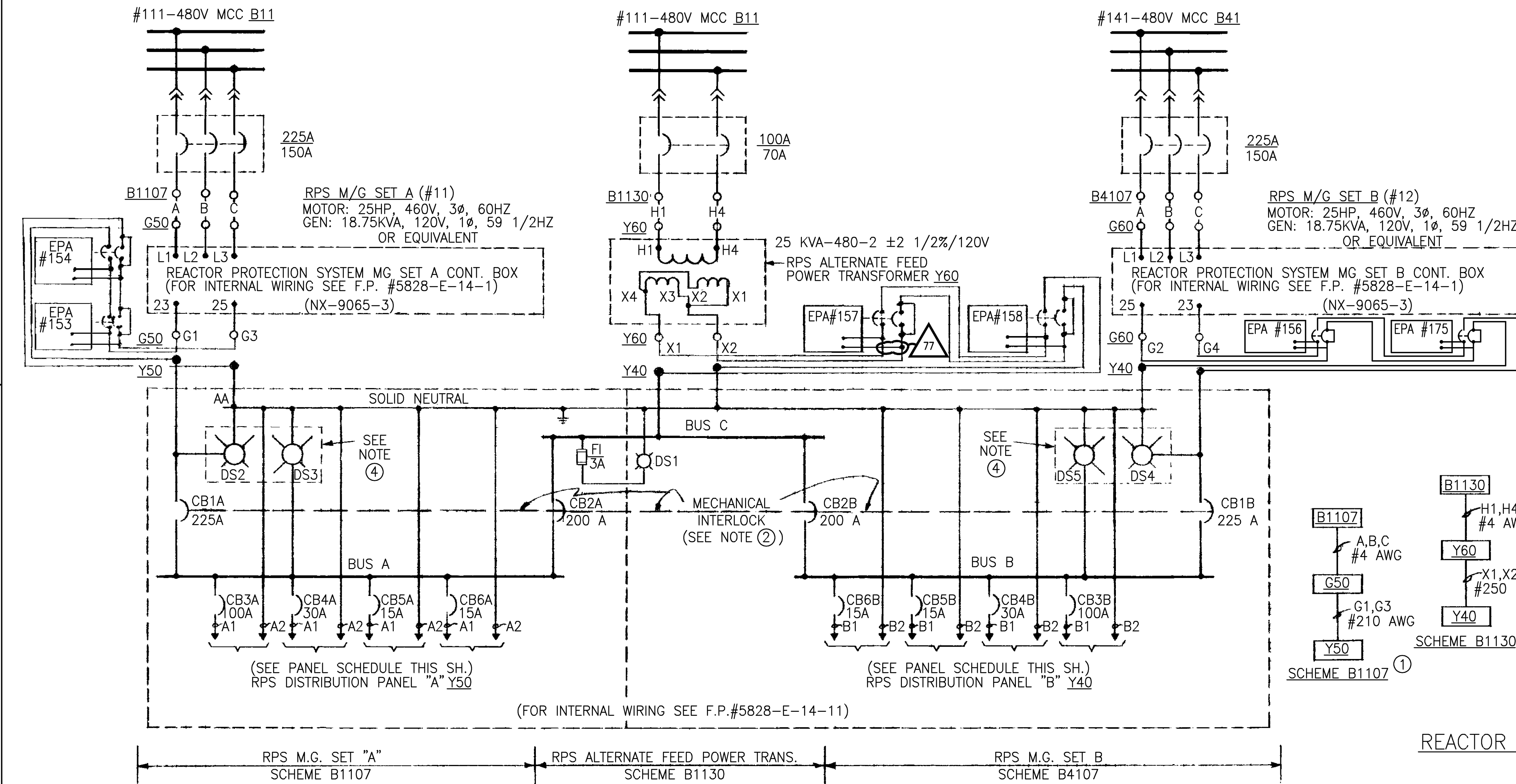
REV 90

**NH-36666**

Xcel Energy

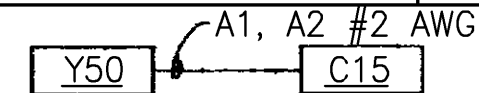
- NOTES:**
1. VALVE IS NORMALLY OPEN WHEN CORROSION MONITOR COUPON IS INSTALLED.
  2. DIVERTER PLATE USED TO DIRECT TRAVELING SCREEN SLUICE WATER TO RIVER OR TO TRASH BASKET.





RPS DISTRIBUTION PANEL "A" Y50 (F.P.#5828-E-14-11 &amp; 12)

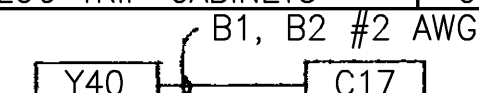
SCHEME NO.	CKT NO.	BKR. RATING AMPS	DESCRIPTION	LOCATION	ROUTING SEPARATION FROM SCHEME	WIRE SIZE
Y5003A	3A	100	RPS CHANNEL "A"	C15	Y4003B & B4107	#2
Y5004A	4A	30	PWR RANGE NEUTRON MONITOR SYSTEM BUS "A"	C37 (TB-7)	Y4004B & B4107	#10
Y5005A	5A	15	PROCESS RADIATION MONITORS BUS "A"	C10	Y4005B & B4107	#10
Y5006A	6A	15	RPS CHANNELS A1 & A2 ANALOG TRIP CABINETS	C-304A & C-304C	Y4006B & B4107	2-3/C #10



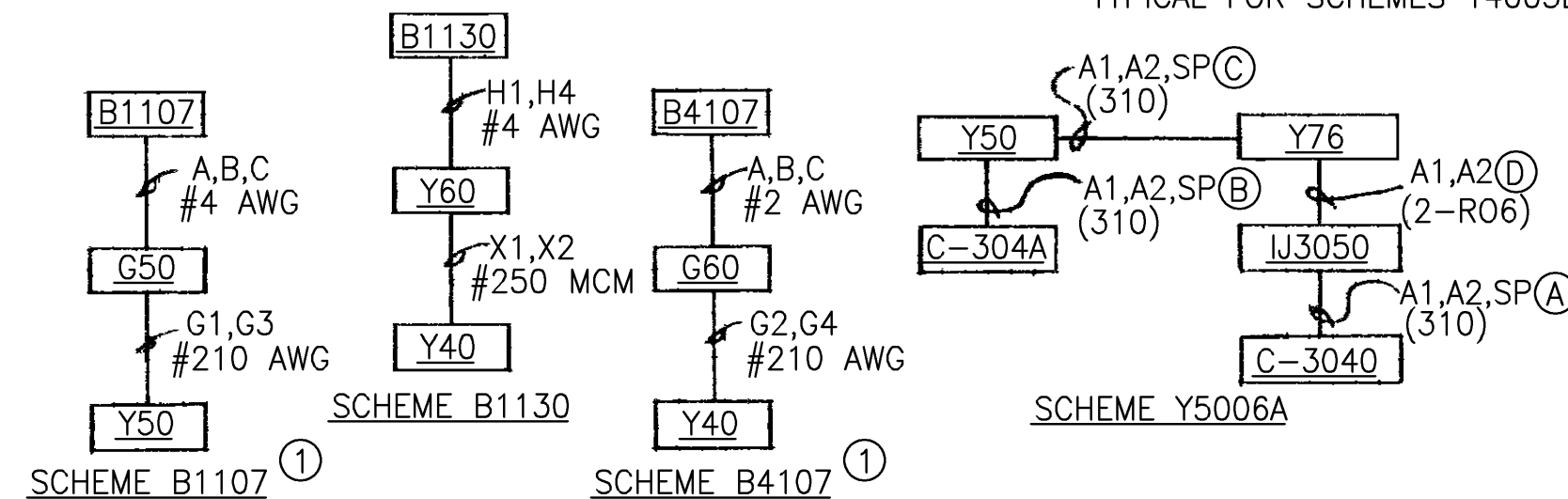
TYPICAL FOR SCHEMES Y5003A THRU Y5005A

RPS DISTRIBUTION PANEL "B" Y40 (F.P.#5828-E-14-11 &amp; 12)

SCHEME NO.	CKT NO.	BKR. RATING AMPS	DESCRIPTION	LOCATION	ROUTING SEPARATION FROM SCHEME	WIRE SIZE
Y4003B	3B	100	RPS CHANNEL "B"	C17	Y5003A & B1107	#2
Y4004B	4B	30	PWR RANGE NEUTRON MONITOR SYSTEM BUS "B"	C37 (TB-6)	Y5004A & B1107	#10
Y4005B	5B	15	PROCESS RADIATION MONITORS BUS "B"	C10	Y5005A & B1107	#10
Y4006B	6B	15	RPS CHANNELS B1 & B2 ANALOG TRIP CABINETS	C-304B & C-304D	Y5006A & B1107	2-3/C #10

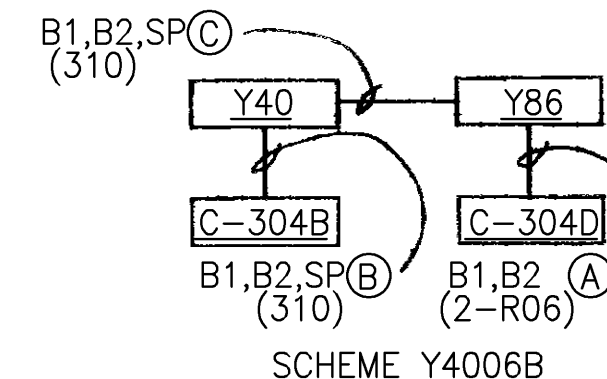


TYPICAL FOR SCHEMES Y4003B THRU Y4005B



## NOTES:

- MANDATORY ROUTING SEPARATION OF SCHEME B1107 FROM B4107
- MECHANICAL INTERLOCK ON RPS PANEL Y40-Y50 BLOCKS. SIMULTANEOUS CLOSING OF THE FOLLOWING PAIRS OF CIRCUIT BREAKERS:  
1A-2A  
1B-2B  
2A-2B
- ALL CABLING BETWEEN MCC'S B11 & B41 AND DISTRIBUTION PANELS Y50 & Y40 ARE TO BE ROUTED IN CABLE TRAYS. ALL CABLES FROM OUTGOING CIRCUITS OF DISTRIBUTION PANELS Y50 & Y40 ARE TO BE ROUTED IN CONDUITS.
- INDICATING LIGHTS IN SEPARATE ENCLOSURES MOUNTED TO BOTTOM OF PANEL. SEE NX-9065-7 & 8.
- SEE G.E. INSTRUCTION MANUAL 914E175 FOR ELECTRICAL PROTECTION ASSEMBLIES, EPA.



## REVISIONS

76 EC1015

DWN: JJP 1-9-08  
CHK: BAL 1-9-08  
APPR: NDM 1-10-08

77 EC22629

DWN: JJP 2-13-14  
CHK: BAL 2-17-14  
APPR: ASH 2-18-14

BECHTEL JOB NO. 5828

This map/document is to assist employees in the performance of their jobs.  
Your personal safety is provided for by using safety practices, procedures and  
equipment as described in safety training programs, manuals and SPAR's.

E-111

MONTI CAD DWG 'H'

REACTOR PROTECTION POWER SYSTEM  
DISTRIBUTION PANEL Y40 & Y50

MONTICELLO NUCLEAR GENERATING PLANT

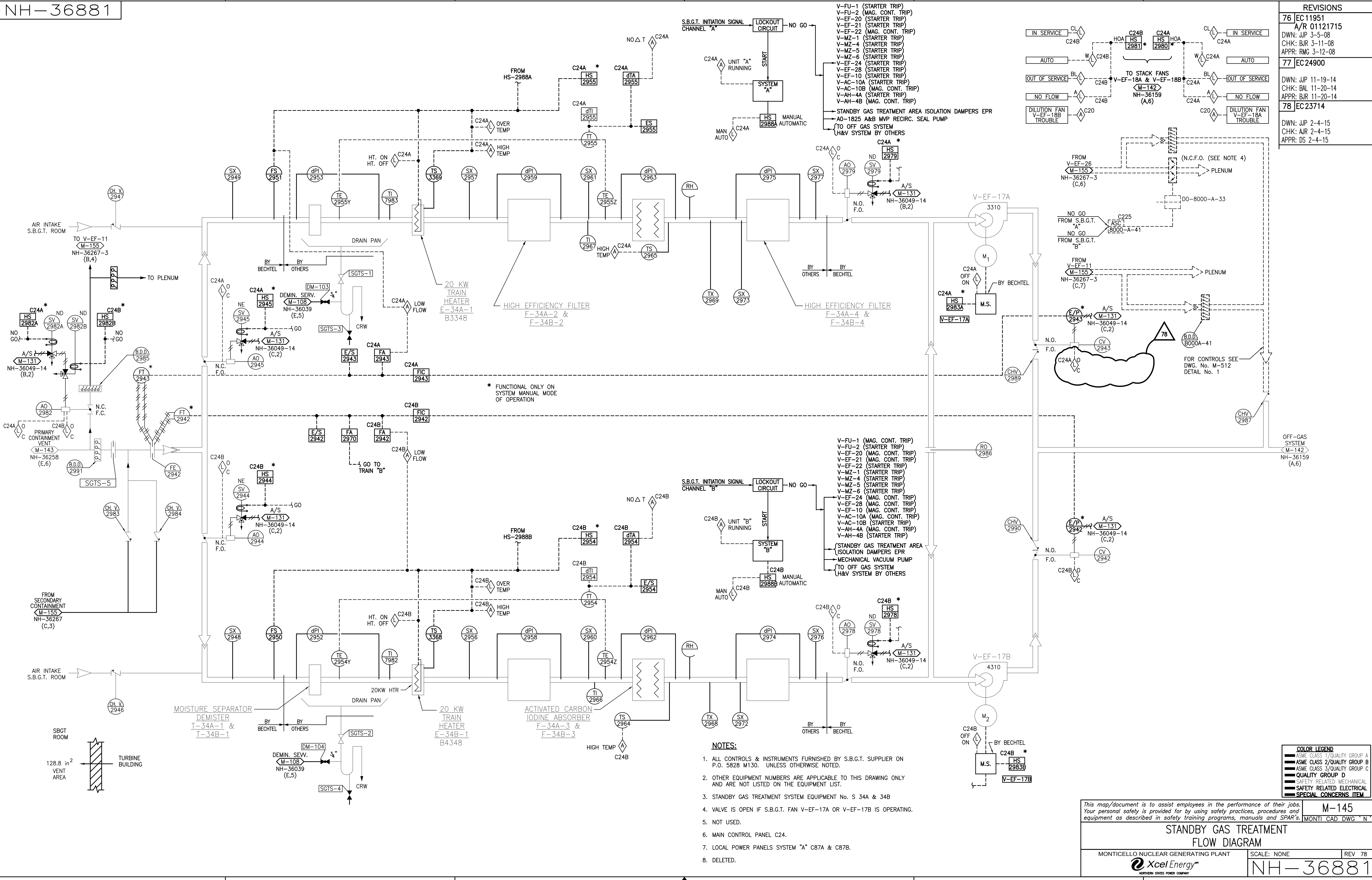
SCALE: NONE

REV 77



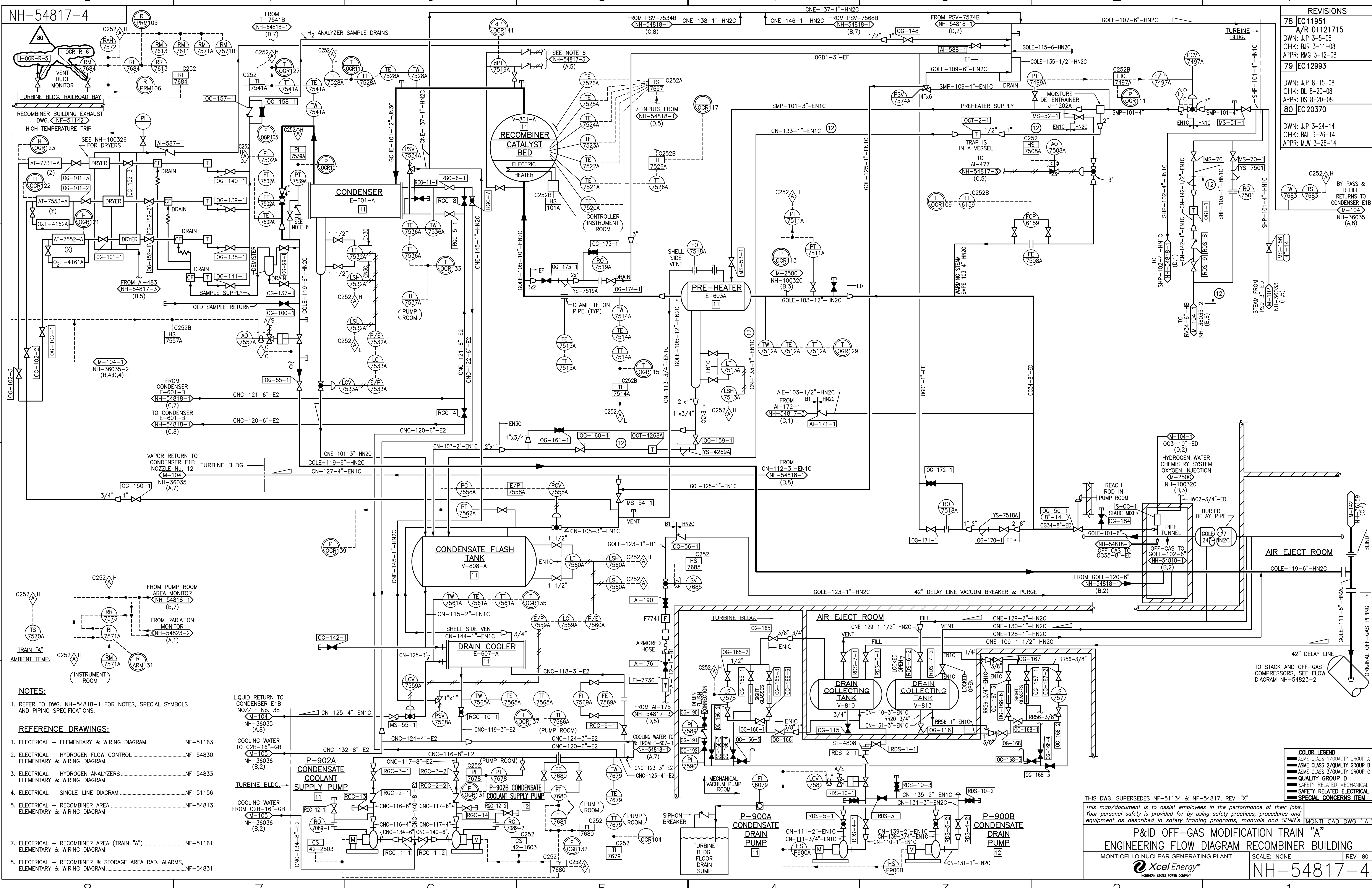
NE-36771-4

REVISIONS	
76	EC11951 A/R 01121715 DWN: JJP 3-5-08 CHK: BJR 3-11-08 APPR: RMG 3-12-08
77	EC24900 DWN: JJP 11-19-14 CHK: BAL 11-20-14 APPR: BJR 11-20-14
78	EC23714 DWN: JJP 2-4-15 CHK: AJR 2-4-15 APPR: DS 2-4-15









REVISIONS	
78	EC11951 A/R 01121715 DWN: JJP 3-5-08 CHK: BJR 3-11-08 APPR: DS 3-12-08
79	EC12993 DWN: JJP 8-15-08 CHK: BL 8-20-08 APPR: DS 8-20-08
80	EC20370 DWN: JJP 3-24-14 CHK: BAL 3-26-14 APPR: MLW 3-26-14

BY-PASS & RELIEF RETURNS TO CONDENSER E1B  
M-104  
NH-36035 (A,8)

COLOR LEGEND	
ASME CLASS 1/QUALITY GROUP A	
ASME CLASS 2/QUALITY GROUP B	
ASME CLASS 3/QUALITY GROUP C	
SAFETY RELATED MECHANICAL	
SAFETY RELATED ELECTRICAL	
SPECIAL CONCERNS ITEM	

THIS DWG. SUPERSEDES NF-51134 & NF-54817, REV. "X"

This map/document is to assist employees in the performance of their jobs. Your personal safety is provided for by using safety practices, procedures and equipment as described in safety training programs, manuals and SPAR's.

MONTE CAD DWG 'A'

**P&ID OFF-GAS MODIFICATION TRAIN "A"**  
**ENGINEERING FLOW DIAGRAM RECOMBINER BUILDING**

MONTICELLO NUCLEAR GENERATING PLANT

SCALE: NONE

REV 80

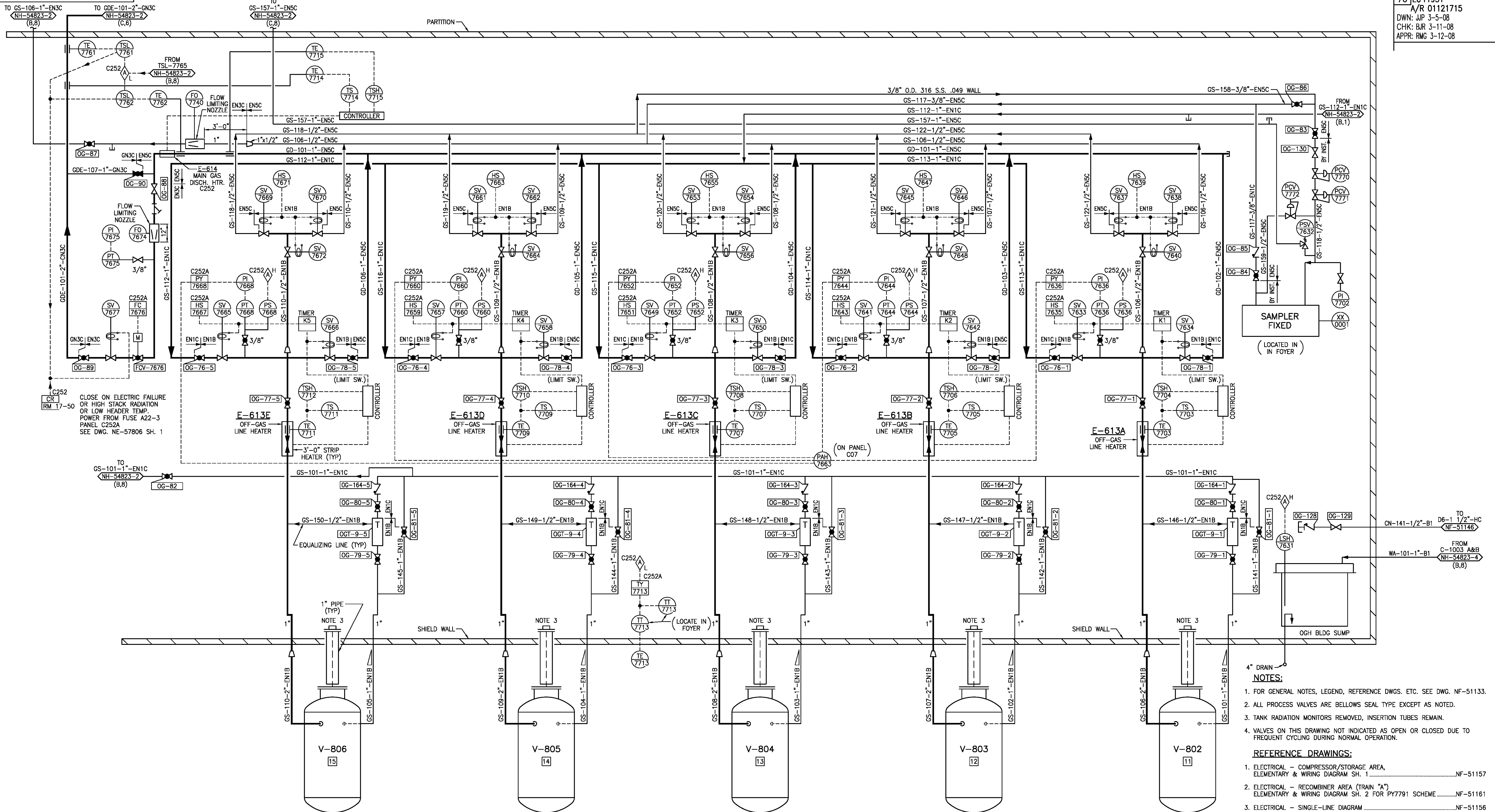
**XcelEnergy**  
NORTHERN STATES POWER COMPANY

**NH-54817-4**

NH-54822-2

REVISIONS

76 EC11951  
A/R 01121715  
DWN: JWP 3-5-08  
CHK: BJR 3-11-08  
APPR: RMG 3-12-08



NOTES:

- FOR GENERAL NOTES, LEGEND, REFERENCE DWGS. ETC. SEE DWG. NF-51133.
- ALL PROCESS VALVES ARE BELLOWS SEAL TYPE EXCEPT AS NOTED.
- TANK RADIATION MONITORS REMOVED, INSERTION TUBES REMAIN.
- VALVES ON THIS DRAWING NOT INDICATED AS OPEN OR CLOSED DUE TO FREQUENT CYCLING DURING NORMAL OPERATION.

REFERENCE DRAWINGS:

- ELECTRICAL - COMPRESSOR/STORAGE AREA, ELEMENTARY & WIRING DIAGRAM SH. 1 NF-51157
- ELECTRICAL - RECOMBINER AREA (TRAIN "A") ELEMENTARY & WIRING DIAGRAM SH. 2 FOR PY7791 SCHEME NF-51161
- ELECTRICAL - SINGLE-LINE DIAGRAM NF-51156
- ELECTRICAL - HEAT TRACING NF-56210

THIS DWG. SUPERSEDES SUNTAC NUCLEAR CORPORATION DWG. NF-54822

**NSP**

MONTICELLO NUCLEAR  
GENERATING PLANT  
UNIT 1

SIGNIFICANT NUMBER	8700	OGSB	1	4420	1	OGH
GROUP	1	2	3	4	5	6

MONTICELLO NUCLEAR GENERATING PLANT  
P&ID OFF-GAS MODIFICATION ENGINEERING  
FLOW DIAGRAM OFF-GAS STORAGE AREA

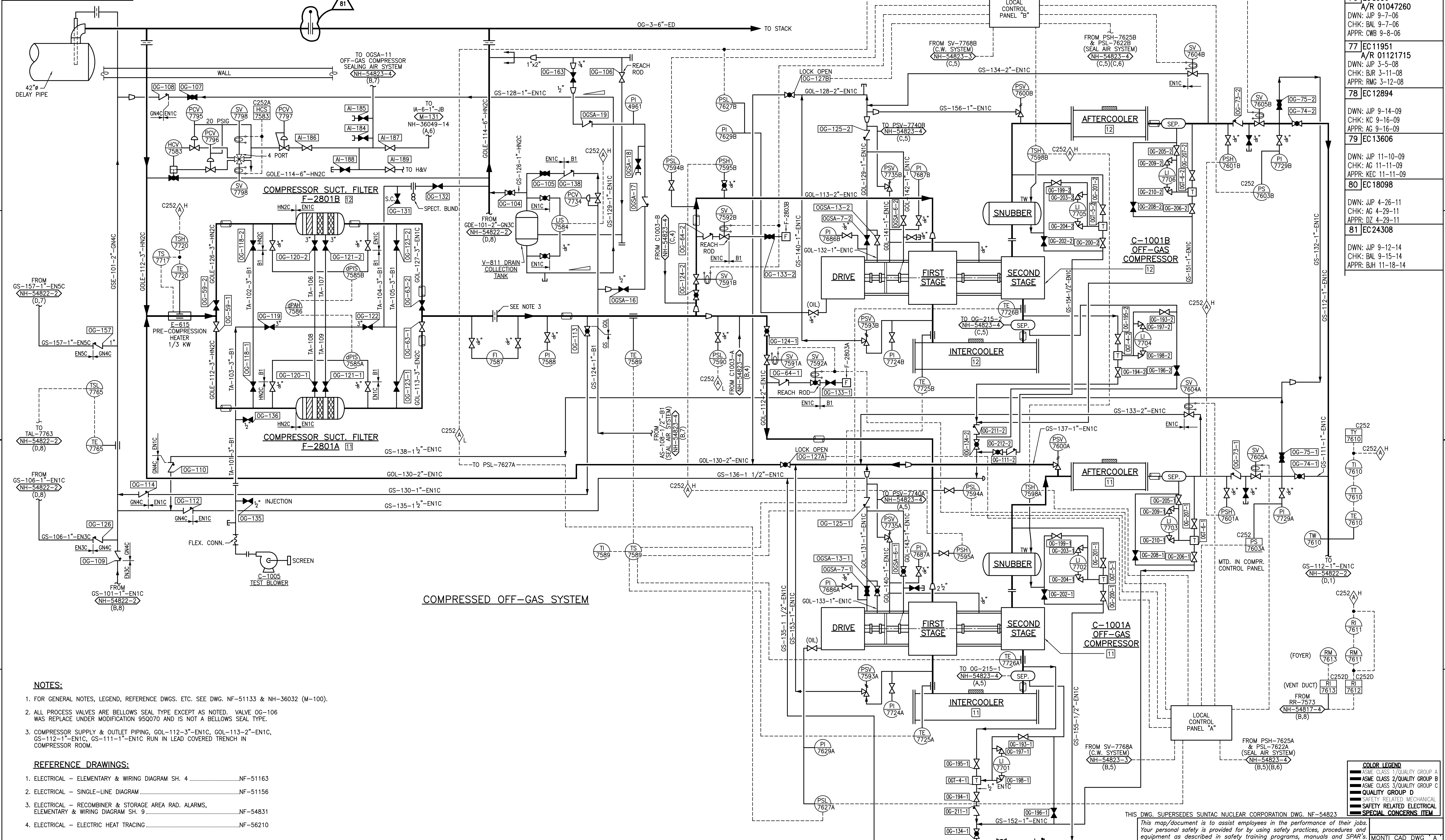
NORTHERN STATES POWER COMPANY  
MINNEAPOLIS

SCALE: NONE  
REV 76  
NH-54822-2

This map/document is to assist employees in the performance of their jobs.  
Your personal safety is provided for by using safety practices, procedures and  
equipment as described in safety training programs, manuals and SPAR's.

COLOR LEGEND
ASME CLASS 1/QUALITY GROUP A
ASME CLASS 2/QUALITY GROUP B
ASME CLASS 3/QUALITY GROUP C
QUALITY GROUP D
SAFETY RELATED MECHANICAL
SAFETY RELATED ELECTRICAL
SPECIAL CONCERNS ITEM

NH-54823-2





NH-54823-3

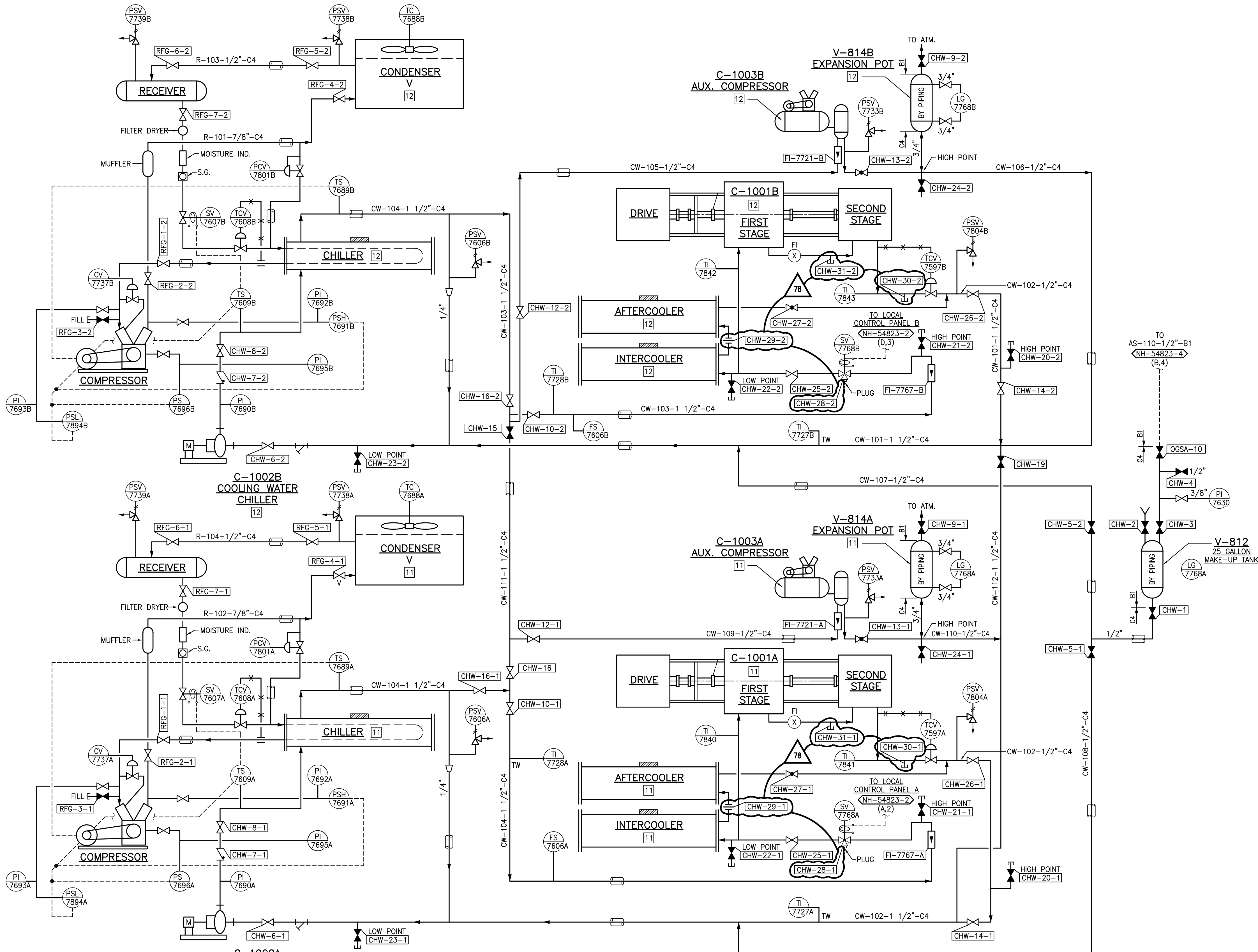
REVISIONS	
76	EC 11951 A/R 01121715 DWN: JJP 3-5-08 CHK: BJR 3-11-08 APPR: RMG 3-12-08
77	EC 20278 DWN: JJP 8-8-12 CHK: PEB 8-9-12 APPR: JPC 9-4-12
78	EC 25066 DWN: JJP 8-28-15 CHK: BAL 9-2-15 APPR: TKG 9-22-15

NOTES:

- FOR GENERAL NOTES, LEGEND, REFERENCE DWGS. ETC. SEE DWG. NF-51133.
- ALL PROCESS VALVES ARE BELLOWS SEAL TYPE EXCEPT AS NOTED.
- COMPRESSOR SUPPLY & OUTLET PIPING, GOL-112-3"-EN1C, GOL-113-2"-EN1C, GS-112-1"-EN1C, GS-111-1"-EN1C RUN IN LEAD COVERED TRENCH IN COMPRESSOR ROOM.

REFERENCE DRAWINGS:

- ELECTRICAL - ELEMENTARY & WIRING DIAGRAM SH. 4 NF-51163
- ELECTRICAL - SINGLE-LINE DIAGRAM NF-51156
- ELECTRICAL - RECOMBINER & STORAGE AREA RAD. ALARMS, ELEMENTARY & WIRING DIAGRAM SH. 9 NF-54831
- ELECTRICAL - ELECTRIC HEAT TRACING NF-56210



COLOR LEGEND	
ASME CLASS 1/QUALITY GROUP A	
ASME CLASS 2/QUALITY GROUP B	
ASME CLASS 3/QUALITY GROUP C	
QUALITY GROUP D	
SAFETY RELATED MECHANICAL	
SAFETY RELATED ELECTRICAL	
SPECIAL CONCERNS ITEM	

THIS DWG. SUPERSEDES SUNTAC NUCLEAR CORPORATION DWG. NF-54823

This map/document is to assist employees in the performance of their jobs. Your personal safety is provided for by using safety practices, procedures and equipment as described in safety training programs, manuals and SPAR's.

P&ID OFF-GAS MODIFICATION ENGINEERING  
FLOW DIAGRAM COMPRESSOR BUILDING

MONTICELLO NUCLEAR GENERATING PLANT  
XcelEnergy  
NORTHERN STATES POWER COMPANY

SCALE: NONE  
REV 78  
NH-54823-3

NH-54823-4

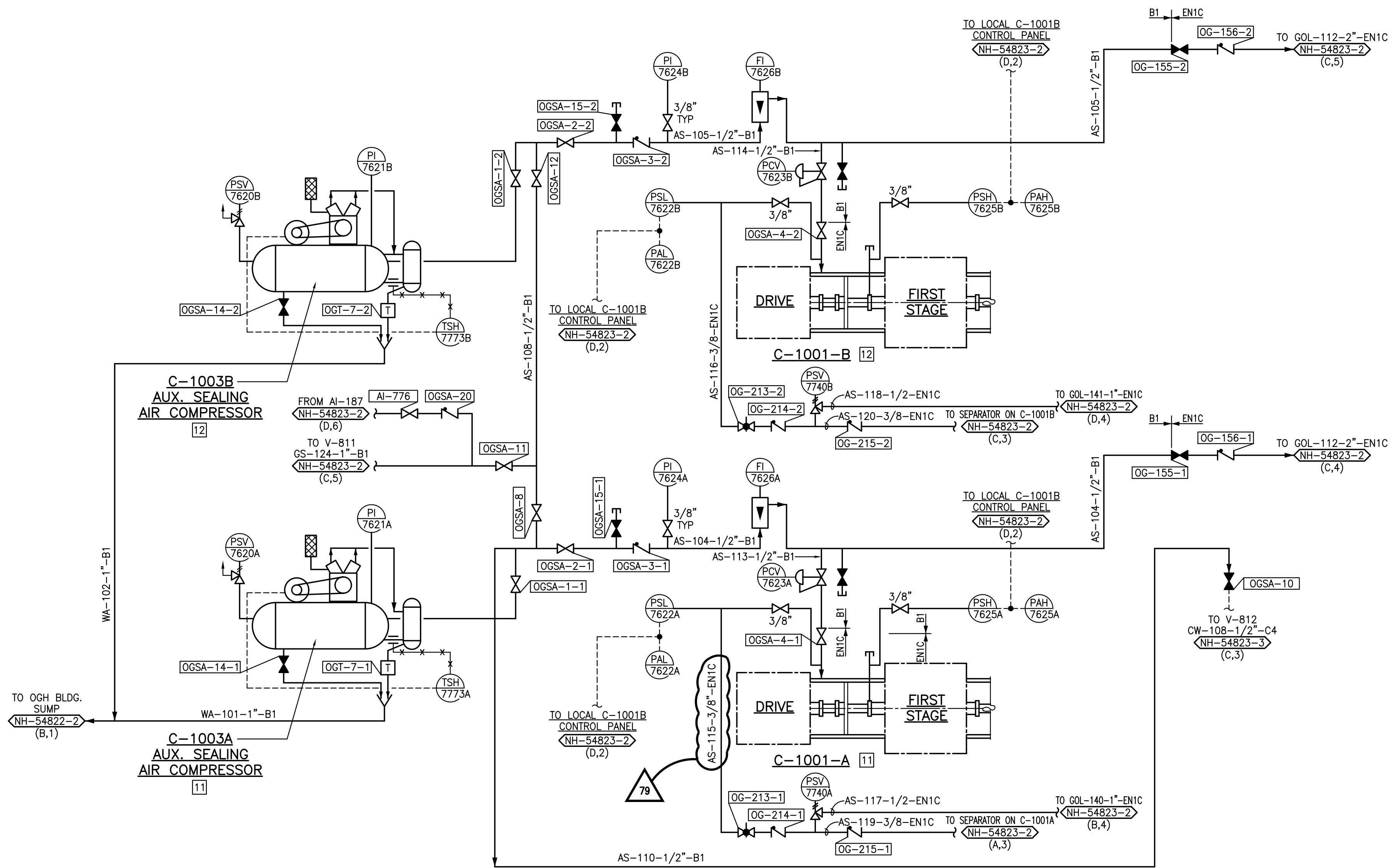
REVISIONS	
76	EC 11951 A/R 01121715 DWN: JJP 3-5-08 CHK: BJR 3-11-08 APPR: RMG 3-12-08
77	EC 12894 DWN: JJP 9-14-09 CHK: KC 9-16-09 APPR: AG 9-16-09
78	EC 13606 DWN: JJP 11-10-09 CHK: AG 11-11-09 APPR: KEC 11-11-09
79	EC 19531 DWN: JJP 2-7-12 CHK: BAL 2-7-12 APPR: JJH 2-7-12

NOTES:

- FOR GENERAL NOTES, LEGEND, REFERENCE DWGS. ETC. SEE DWG. NF-51133.
- ALL PROCESS VALVES ARE BELLOWS SEAL TYPE EXCEPT AS NOTED.
- COMPRESSOR SUPPLY & OUTLET PIPING, GOL-112-3"-EN1C, GOL-113-2"-EN1C, GS-112-1"-EN1C, GS-111-1"-EN1C RUN IN LEAD COVERED TRENCH IN COMPRESSOR ROOM.

REFERENCE DRAWINGS:

- ELECTRICAL - ELEMENTARY & WIRING DIAGRAM SH. 4 .....NF-51163
- ELECTRICAL - SINGLE-LINE DIAGRAM .....NF-51156
- ELECTRICAL - RECOMBINER & STORAGE AREA RAD. ALARMS, ELEMENTARY & WIRING DIAGRAM SH. 9 .....NF-54831
- ELECTRICAL - ELECTRIC HEAT TRACING .....NF-56210



OFF-GAS COMPRESSOR SEALING AIR SYSTEM

COLOR LEGEND	
ASME CLASS 1/QUALITY GROUP A	
ASME CLASS 2/QUALITY GROUP B	
ASME CLASS 3/QUALITY GROUP C	
QUALITY GROUP D	
SAFETY RELATED MECHANICAL	
SAFETY RELATED ELECTRICAL	
SPECIAL CONCERNS ITEM	

THIS DWG. SUPERSEDES SUNTAC NUCLEAR CORPORATION DWG. NF-54823

This map/document is to assist employees in the performance of their jobs. Your personal safety is provided for by using safety practices, procedures and equipment as described in safety training programs, manuals and SPAR's.

MONTE CAD DWG "A"

P&ID OFF-GAS MODIFICATION ENGINEERING FLOW DIAGRAM  
COMPRESSOR BUILDING

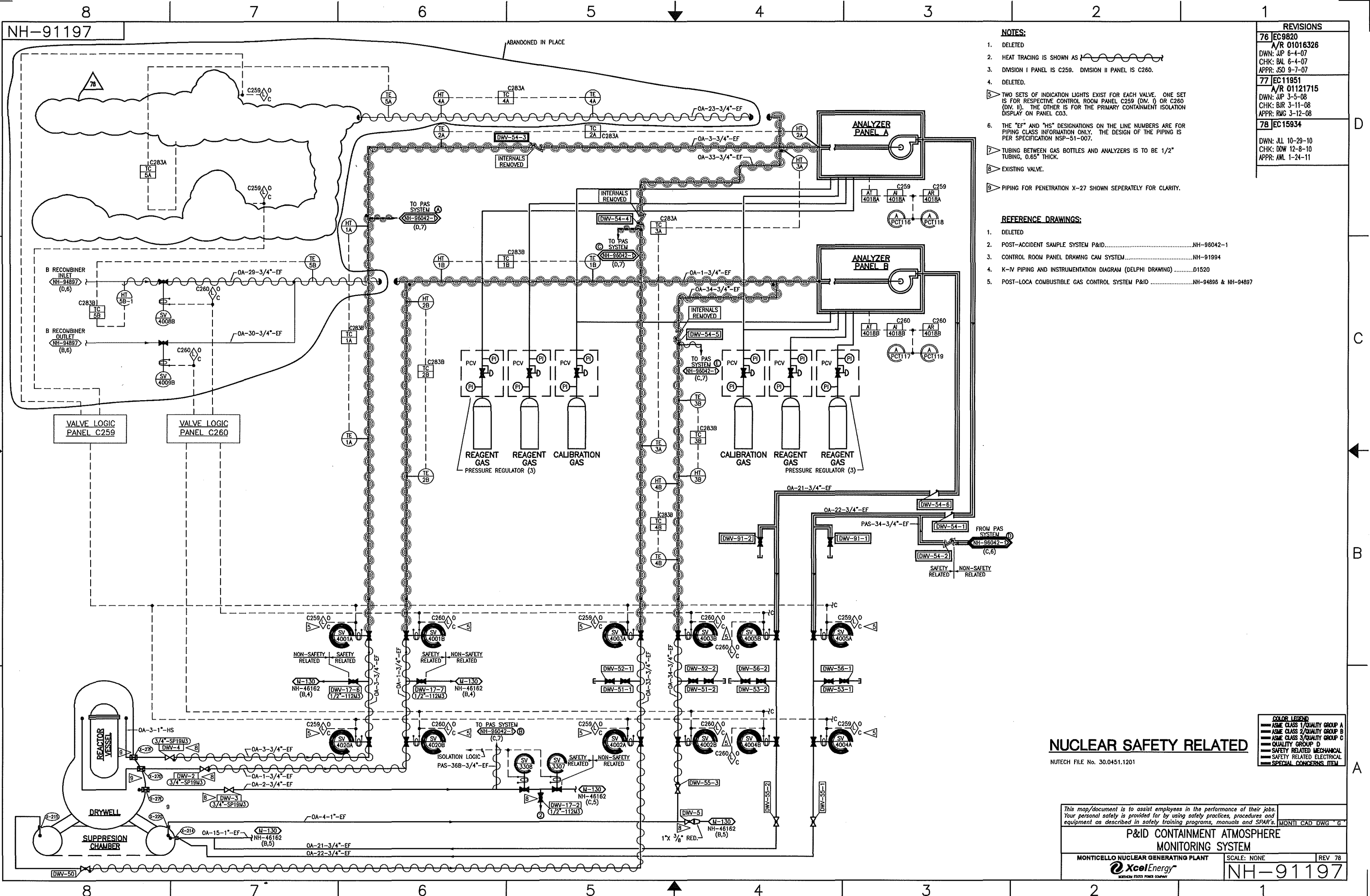
SCALE: NONE

REV 79

MONTECELLO NUCLEAR GENERATING PLANT

Xcel Energy  
NORTHERN STATES POWER COMPANY

NH-54823-4



- NOTES:**
- 1. DELETED
  - 2. HEAT TRACING IS SHOWN AS
  - 3. DIVISION I PANEL IS C259. DIVISION II PANEL IS C260.
  - 4. DELETED.
  - 5. TWO SETS OF INDICATION LIGHTS EXIST FOR EACH VALVE. ONE SET IS FOR RESPECTIVE CONTROL ROOM PANEL C259 (DIV. I) OR C260 (DIV. II). THE OTHER IS FOR THE PRIMARY CONTAINMENT ISOLATION DISPLAY ON PANEL C03.
  - 6. THE "EF" AND "HS" DESIGNATIONS ON THE LINE NUMBERS ARE FOR PIPING CLASS INFORMATION ONLY. THE DESIGN OF THE PIPING IS PER SPECIFICATION NSP-51-007.
  - 7. TUBING BETWEEN GAS BOTTLES AND ANALYZERS IS TO BE 1/2" TUBING, 0.65" THICK.
  - 8. EXISTING VALVE.
  - 9. PIPING FOR PENETRATION X-27 SHOWN SEPARATELY FOR CLARITY.

- REFERENCE DRAWINGS:**
- 1. DELETED
  - 2. POST-ACCIDENT SAMPLE SYSTEM P&ID.....NH-96042-1
  - 3. CONTROL ROOM PANEL DRAWING CAM SYSTEM.....NH-91994
  - 4. K-IV PIPING AND INSTRUMENTATION DIAGRAM (DELPHI DRAWING).....01520
  - 5. POST-LOCA COMBUSTIBLE GAS CONTROL SYSTEM P&ID.....NH-94895 & NH-94897

REVISIONS	
76	EC9820 A/R 01016326 DWN: JWP 6-4-07 CHK: BAL 6-4-07 APPR: JSO 9-7-07
77	EC11951 A/R 01121715 DWN: JWP 3-5-08 CHK: BJR 3-11-08 APPR: RMG 3-12-08
78	EC15934 DWN: JLL 10-29-10 CHK: DOW 12-8-10 APPR: AML 1-24-11

**NUCLEAR SAFETY RELATED**

NUTECH FILE No. 30.0451.1201

COLOR LEGEND	
	ASME CLASS 1/QUALITY GROUP A
	ASME CLASS 2/QUALITY GROUP B
	ASME CLASS 3/QUALITY GROUP C
	QUALITY GROUP D
	SAFETY RELATED MECHANICAL
	SAFETY RELATED ELECTRICAL
	SPECIAL CONCERNS ITEM

This map/document is to assist employees in the performance of their jobs. Your personal safety is provided for by using safety practices, procedures and equipment as described in safety training programs, manuals and SPAR's.

**P&ID CONTAINMENT ATMOSPHERE MONITORING SYSTEM**

MONTICELLO NUCLEAR GENERATING PLANT

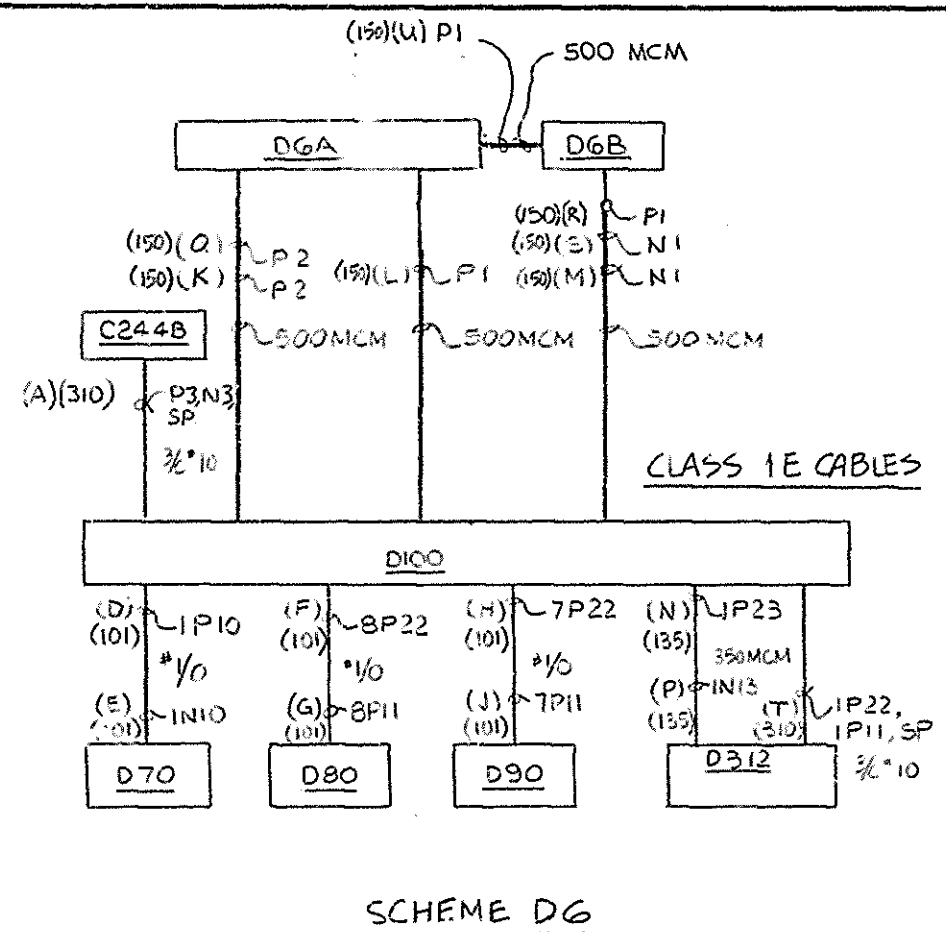
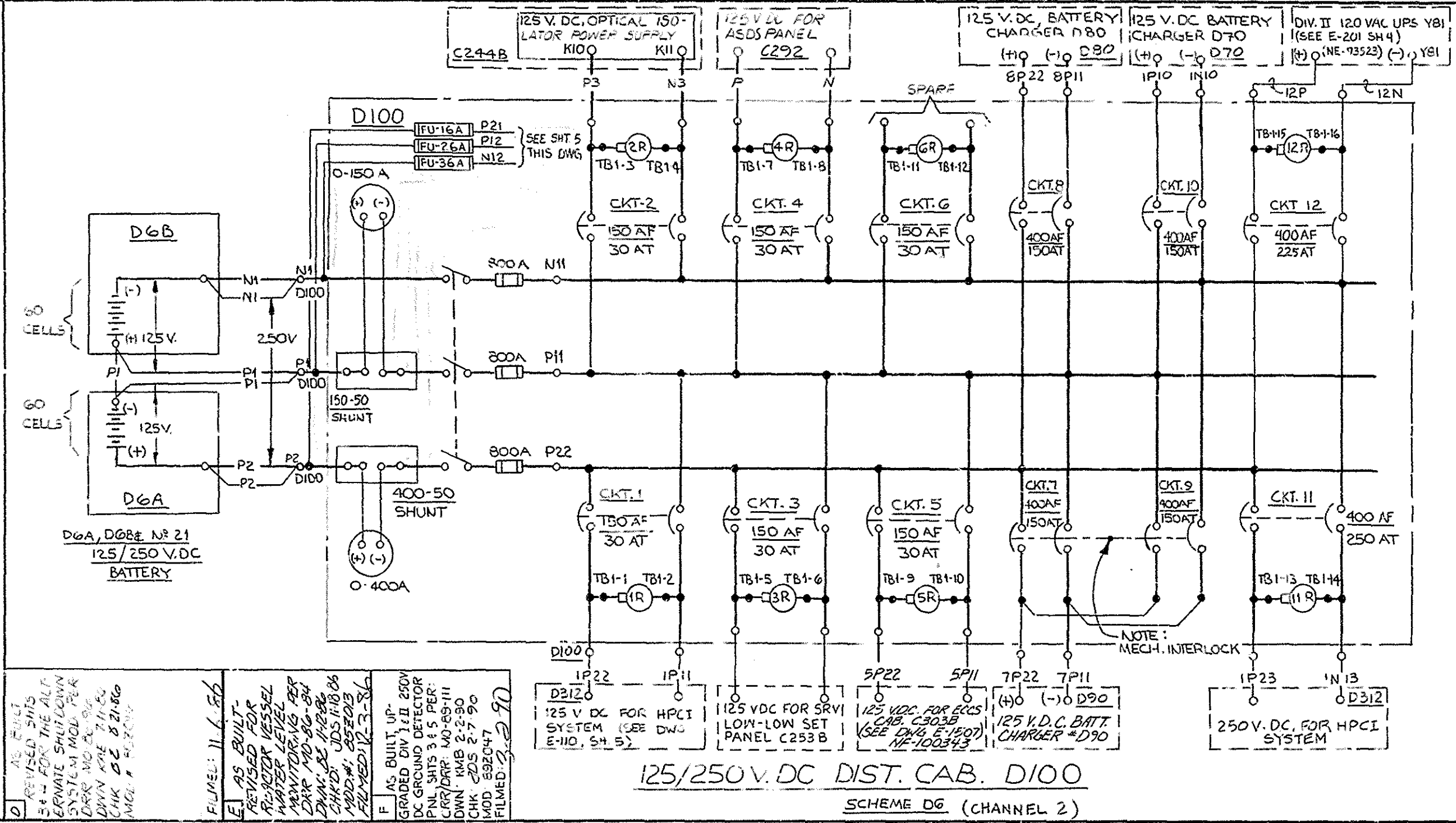
Xcel Energy

SCALE: NONE

REV 78

**NH-91197**





RD



NO.	REV.	DATE	DESCRIPTION	BY	CHK	APP	DATE
1			ADD. DWA. REF. FOR HPCI DC. PNL.				
2			ADD. GND. DETECT. MODIF. INCRP. DC. PNL. AND ECR. #12, 3, 6, 11, 12, 13, 14, 15, 16, 17, 18, 19, 20, 21, 22, 23, 24, 25, 26, 27, 28, 29, 30, 31, 32, 33, 34, 35, 36, 37, 38, 39, 40, 41, 42, 43, 44, 45, 46, 47, 48, 49, 50, 51, 52, 53, 54, 55, 56, 57, 58, 59, 60, 61, 62, 63, 64, 65, 66, 67, 68, 69, 70, 71, 72, 73, 74, 75, 76, 77, 78, 79, 80, 81, 82, 83, 84, 85, 86, 87, 88, 89, 90, 91, 92, 93, 94, 95, 96, 97, 98, 99, 100.				
3			REV. AS SHOWN				
4			CONNECTED CKT. #2, ECR. #12, 3, 6, 11, 12, 13, 14, 15, 16, 17, 18, 19, 20, 21, 22, 23, 24, 25, 26, 27, 28, 29, 30, 31, 32, 33, 34, 35, 36, 37, 38, 39, 40, 41, 42, 43, 44, 45, 46, 47, 48, 49, 50, 51, 52, 53, 54, 55, 56, 57, 58, 59, 60, 61, 62, 63, 64, 65, 66, 67, 68, 69, 70, 71, 72, 73, 74, 75, 76, 77, 78, 79, 80, 81, 82, 83, 84, 85, 86, 87, 88, 89, 90, 91, 92, 93, 94, 95, 96, 97, 98, 99, 100.				
5			REVISED WIRE NUMBER				
6			ISSUED FOR CONST.				

Sig No	8700	200	1	12300
GROUP	1	2	3	4

NORTHERN STATES POWER COMPANY  
MONTICELLO NUCLEAR GENERATING PLANT  
MONTICELLO MINNESOTA

TITLE: SCHEMATIC METERING & RELAYING  
DIAGRAM 125/250V D.C. DIST.  
CHANNEL 2

NO. REV. INITIAL DATE  
REVISED BY DATE  
FOREMAN DATE

REACTOR BUILDING EXPANSION

Q BECHTEL JOB NO 10040  
DNG. NO E-201 SH. 3  
NE 93523 REV. F SHEET 3

# NOTES

- FOR DISTRIBUTION CABINET D100, CABLE NOS AND CABLE CODE SEE BLOCK DIAGRAM ON SH. 3 THIS DRAWING.
- OPTICAL ISOLATOR USES CLASS 1E INPUTS AND PROVIDES ISOLATED OUTPUTS FOR A NON-CLASS 1E CONTROL.
- INTERCONNECTIONS OF ALL ALARM CONTACTS TO BE DONE BY THE FIELD AS SHOWN WITH #14 AWG.
- ALL ABBREVIATIONS ARE AS FOLLOWS;  
ACFPA : AC POWER FAILURE ALARM.  
HVSD : HIGH VOLTAGE SHUT DOWN

- SWITCH SW-1 ON BATTERY CHARGER D70 AND SIMILAR SWITCHES ON D80 & D90 ARE TO BE INSTALLED AND WIRED IN FIELD. SWITCHES ARE IN THE PROCESS OF BEING PROCURED FROM COMSIP, INC. UNDER P.O. 10040-J200(Q).

RD

Sig No	8700	20	1	3200	12300
GROUP	1	2	3	4	5

NORTHERN STATES POWER COMPANY  
MONTICELLO NUCLEAR GENERATING PLANT  
MONTICELLO MINNESOTA

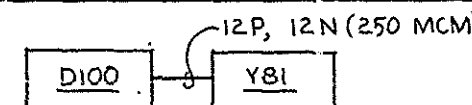
BECHTEL JOB NO 10040  
DWG. E-201 SHEET 4  
NE 93523 Rev. ESHEET 4

TITLE:  
SCHEMATIC METERING & RELAYING  
DIAGRAM 125/250V D.C. DIST.  
CHANNEL 2

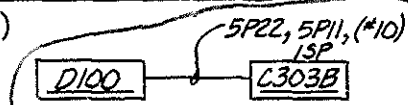
REACTOR BUILDING EXPANSION

#100-125/250 V. DC DISTRIBUTION CABINET D100

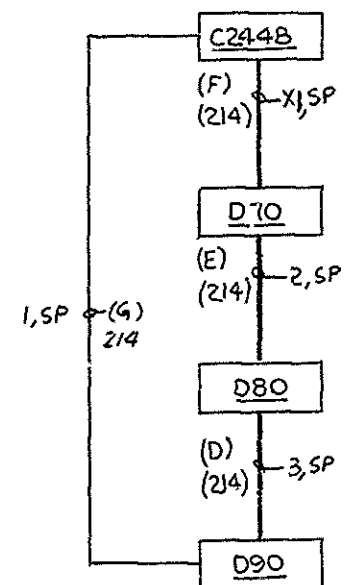
SCHEME NR	CKT. NR	ACB	SERVICE	LOC.	CHANNEL	WIRE SIZE
D6	1	150/30	125 V. DC, FOR HPCI SYS.	D312	2	#10
D6	2	150/30	125 V. DC, OPTIC. ISOL. P.S.	C244B	2	#10
D6	3	150/30	125 V. DC, FOR SRY LOW-LOW SET PANEL C253B	C253B	2	#10
D10004	4	150/30	125 V. DC FOR ASDS SYS	C292	2	#10
D10005	5	150/30	125 V. DC FOR ECCS	C303B	2	#10
	6	150/30	SPARE			
D6	7	400/150	125 V. DC BATT. CHARG.	D90	2	#1/0
D6	8	400/150	125 V. DC BATT. CHARG.	D80	2	#1/0
D6	9	400/150	125 V. DC BATT. CHARG.	D70	2	#1/0
D6	10	400/150	125 V. DC BATT. CHARG.	D70	2	#1/0
D6	11	400/250	250 V. DC FOR HPCI SYS.	D312	2	350 MCM
D10012	12	400/225	DIV. II 120 VAC UPS Y81	Y81	2	250 MCM



SCHEME  
D10012



SCHEME  
D10005

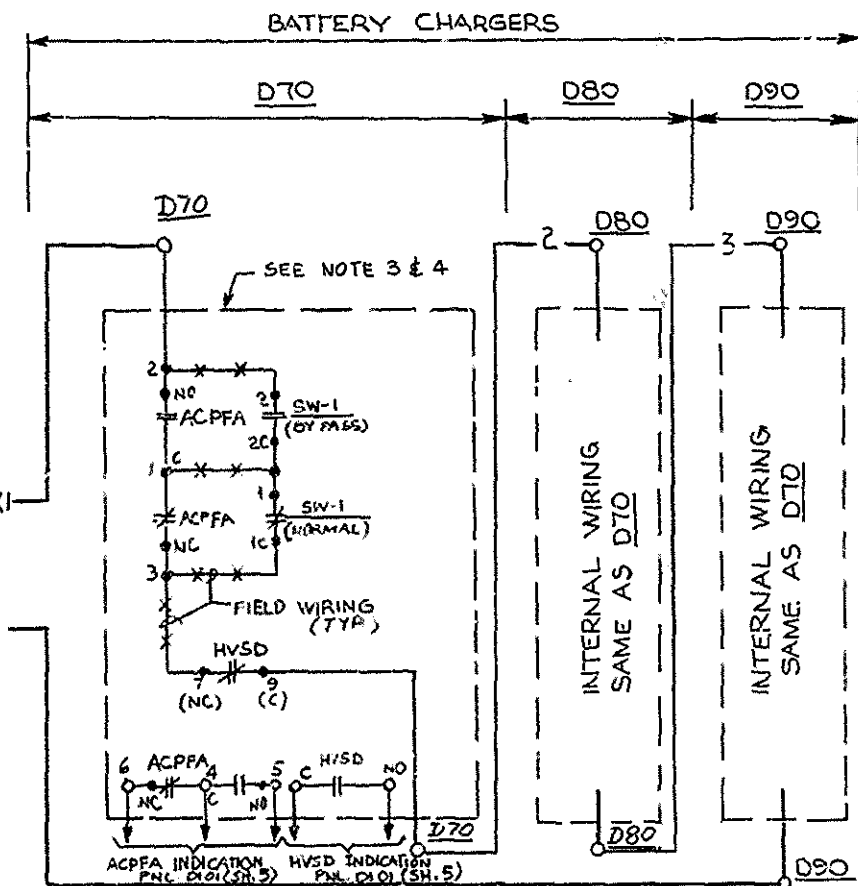


SCHEME  
D31203

SW#1 (SEE NOTE 5)

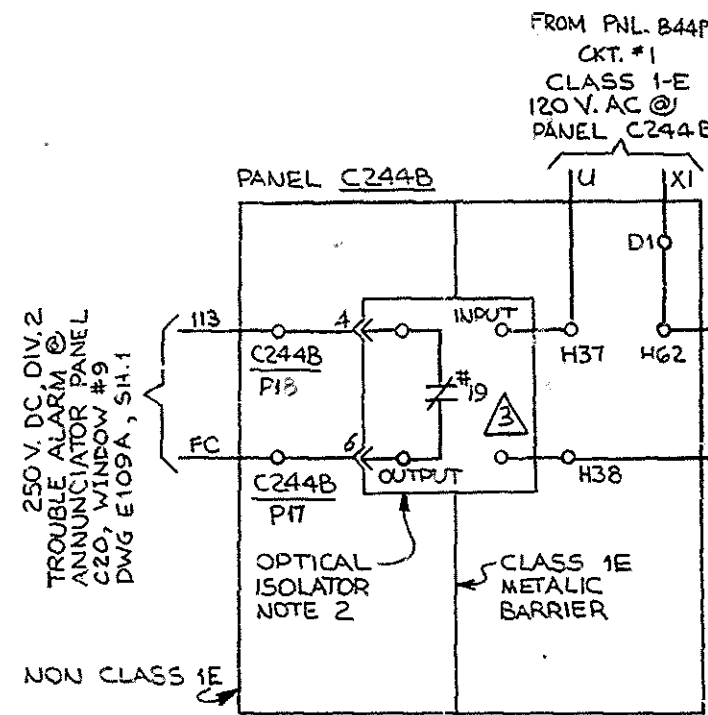
CONTACT	NORMAL	BY PASS	DWG. NO.
1-11-1C	X		THIS SH.
2-11-2C		X	THIS SH.
3-11-3C	X		SH. 5
4-11-4C		X	SH. 5

TWO POSITION SWITCH, MAINTAINED  
(CLASS 1E)



BATTERY CHARGER TROUBLE ALARMS

SCHEME D31203  
(CHAN. 2)



E AS BUILT-  
REVISED FOR  
REACTOR VESSEL  
MONITORING PER  
DRR MO-86-94  
DWN: KAE 11-2-86  
CHK: JDS 11-8-86  
MOD: 852013  
FILMED: 12-3-86

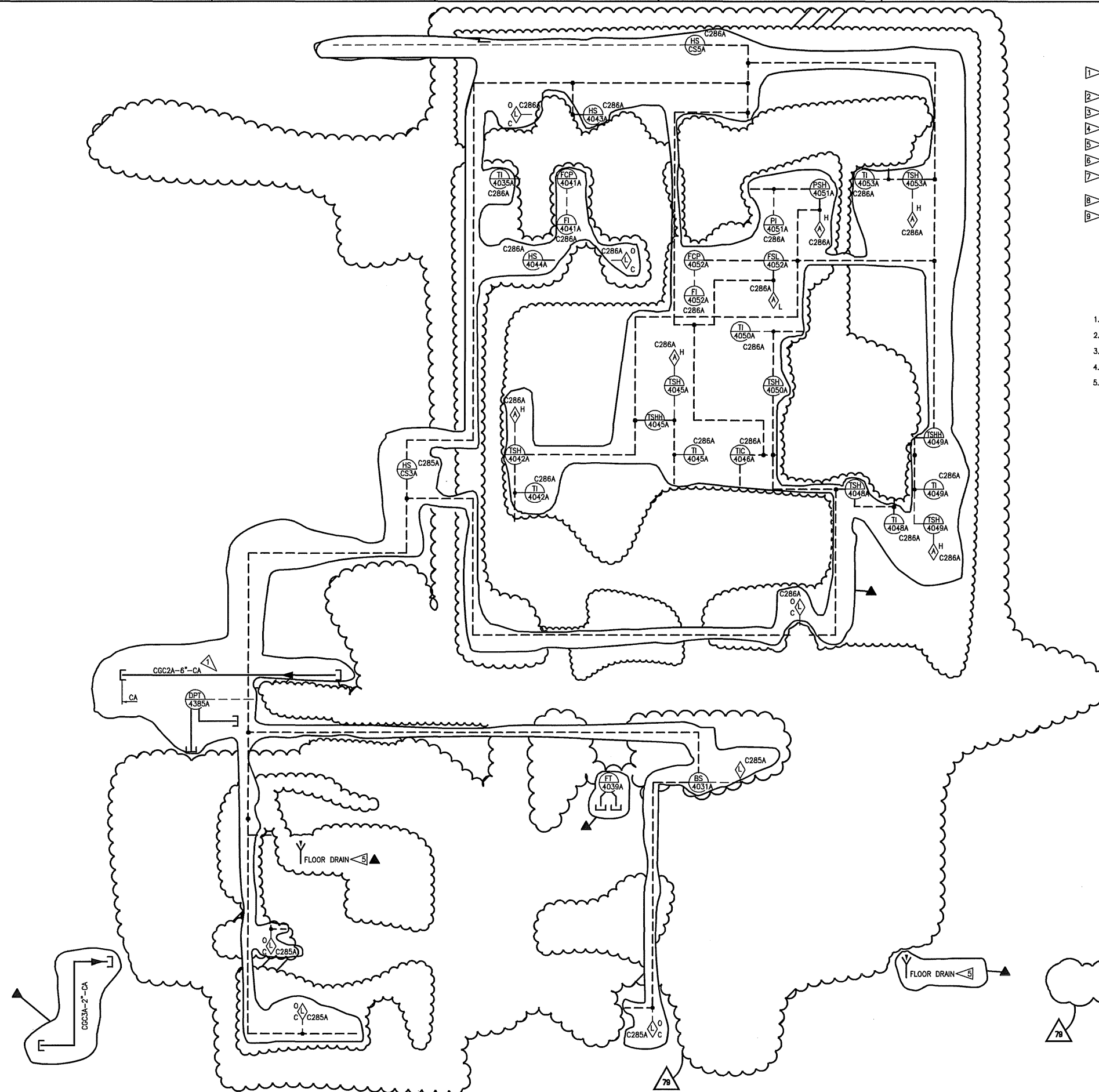
B AS BUILT  
REVISED THIS DWG  
PER DRR MO-85-232  
DWN: BE 12-1-85  
CHK: JDI 12-4-85  
MOD: 832057

C AS BUILT-  
ADDED DIVISION I  
AND DIVISION II  
CLASS 1E 120V.  
INSTRUMENT AC  
POWER SYSTEM  
PER DRR MO-86-67  
DWN: RM 6-2-86  
CHK: JDI 6-9-86  
MOD: 852019  
FILMED: 7-7-86

D AS BUILT  
REVISED SHS. 3&4  
FOR THE ALTER-  
NATE SHUTDOWN  
SYSTEM MOD. PER  
DRR MO-86-96  
DWN: KAE 7-11-86  
CHK: BE 8-21-86  
MOD: 852016

FILMED: 11-6-86

NH-94896



**NOTES:**

- 
- 1 [REDACTED]
- 2 DELETED
- 3 [REDACTED]
- 4 DELETED
- 5 DISCHARGE INTO DRAIN LOCATED AT FLOOR EL. 665'-6"
- 6 DELETED
- 7 [REDACTED]
- 8 DELETED
- 9 ALL EQUIPMENT ABANDONED IN PLACE

REFERENCE DRAWINGS:

1. ROCKWELL INTERNATIONAL HYDROGEN RECOMBINER P&ID DWG N116000320.
2. CGCS SYSTEM DESIGN SPECIFICATION, NSP-63-101, (MPS-2016).
3. CGCS DIV. I ELEMENTARY DIAGRAM NF-94894-SERIES.
4. CAM SYSTEM P&ID NH-91197.
5. ▲-ABANDONED IN PLACE.

## REVISIONS

<b>76</b>	<b>EC9820</b>
<b>A/R 01016326</b>	
DWN: JJP 6-4-07	
CHK: BAL 6-4-07	
APPR: JSO 9-7-07	
<b>77</b>	<b>EC11951</b>
<b>A/R 01121715</b>	
DWN: JJP 3-5-08	
CHK: BJR 3-11-08	
APPR: RMG 3-12-08	
<b>78</b>	<b>EC13161</b>
DWN: JJP 10-3-08	
CHK: BAL 10-3-08	
APPR: BL 10-6-08	
<b>79</b>	<b>EC15934</b>
DWN: JLL 10-21-10	
CHK: DDW 12-8-10	
APPR: AML 1-22-11	

**COLOR LEGEND**

- ASME CLASS 1/QUALITY GROUP A
- ASME CLASS 2/QUALITY GROUP B
- ASME CLASS 3/QUALITY GROUP C
- QUALITY GROUP D
- SAFETY RELATED MECHANICAL
- SAFETY RELATED ELECTRICAL
- SPECIAL CONCERNS ITEM

NUTECH FILE No. 30.2363.0212


*This map/document is to assist employees in the performance of their jobs. Your personal safety is provided for by using safety practices, procedures and equipment as described in safety training programs, manuals and SPAR's.*

as described in safety training programs, manuals and SPARs. MONTI CAD

P&ID COMBUSTIBLE GAS CONTROL SYSTEM

# DIVISION I (EAST)

MONTICELLO NUCLEAR GENERATING PLANT

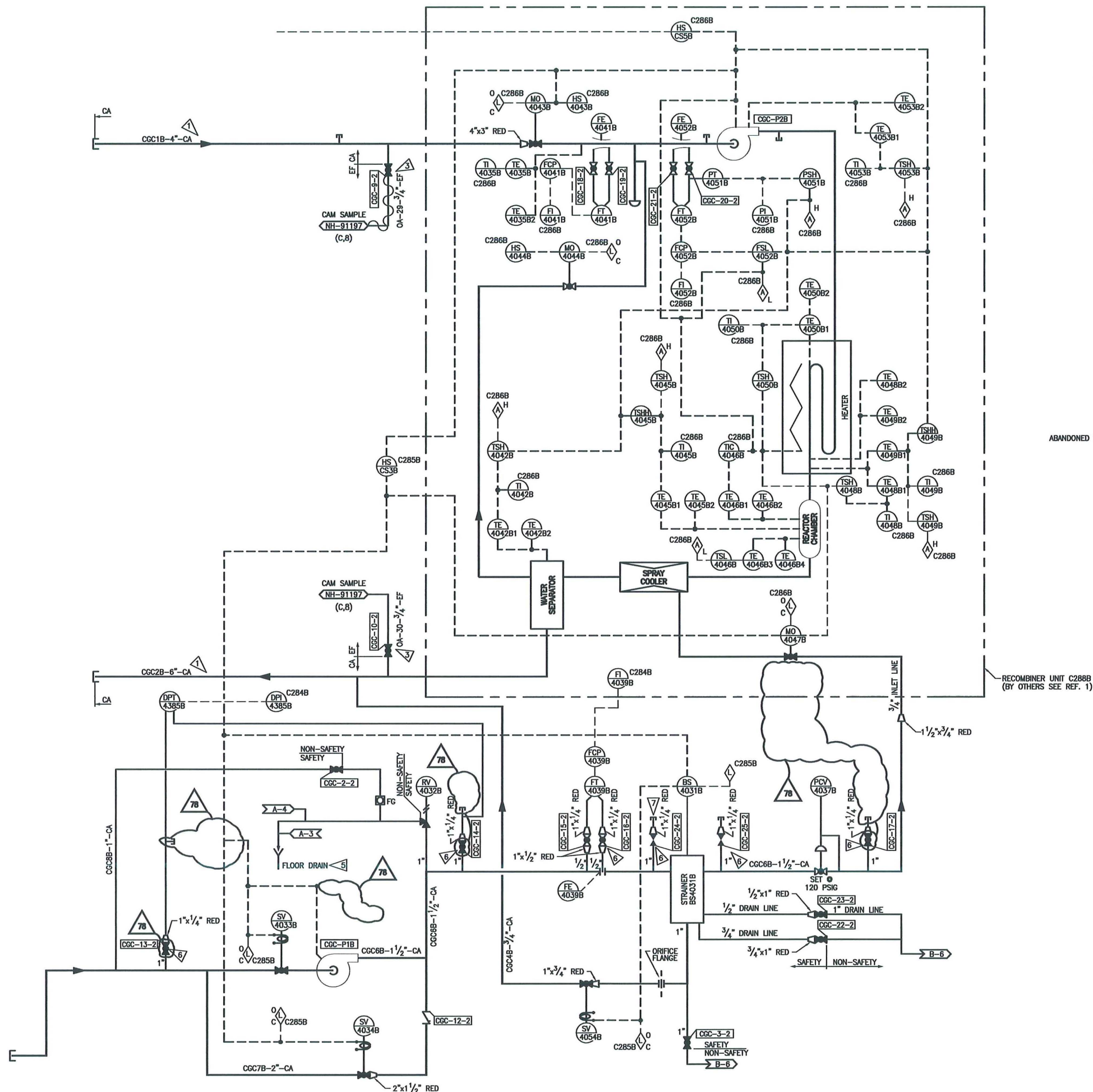


**Xcel Energy**  
MODERN STATE POWER COMPANY

SCALE: NONE	REV 79
-------------	--------

SCALE: NONE	REV 79
NH-94896	





- NOTES:**
- THE INLET AND OUTLET PIPING SHALL BE SUITABLY SITUATED SUCH THAT ANY CONDENSATE WHICH MAY COLLECT WILL NOT INHIBIT RECOMBINER OPERATION.
  - DELETED
  - CAM SAMPLE LINES MUST TAP TOP OF CGCS PROCESS LINES.
  - VALVE TO BE LOCATED NEAR THE RHR AUXILIARY AIR TAP.
  - DISCHARGE INTO DRAIN LOCATED UNDER THE RECOMBINER SKID.
  - ROOT VALVE TO BE LOCATED NEAR THE CONNECTION TO PROCESS LINE.
  - INSTRUMENT TO BE ADDED LATER. PLUG AT REDUCERS ADDED TO CAP OFF INSTRUMENT LINES.
  - DELETED.
  - FOR INSTALLATION OF FT 4039B AND DPT 4385B INSTRUMENT LINES, SEE DWG. NQ-119013-1.

**REFERENCE DRAWINGS:**

- ROCKWELL INTERNATIONAL HYDROGEN RECOMBINER P&ID DWG N116000320.
- CGCS SYSTEM DESIGN SPECIFICATION, NSP-63-101.
- CGCS DIV. II ELEMENTARY DIAGRAM NF-94895-1.
- CAM SYSTEM P&ID NH-91197.

ABANDONED IN PLACE

RECOMBINER UNIT C286B  
(BY OTHERS SEE REF. 1)

REVISIONS	
76	EC9820 A/R 01016326 DWN: JIP 6-4-07 CHK: BAL 6-4-07 APPR: JSO 9-7-07
77	EC11951 A/R 01121715 DWN: JIP 3-5-08 CHK: BJR 3-11-08 APPR: RMG 3-12-08
78	EC13161 DWN: JIP 10-3-08 CHK: BAL 10-3-08 APPR: BL 10-6-08

COLOR LEGEND	
—	ASME CLASS 1/QUALITY GROUP A
—	ASME CLASS 2/QUALITY GROUP B
—	ASME CLASS 3/QUALITY GROUP C
—	QUALITY GROUP D
—	SAFETY RELATED MECHANICAL
—	SAFETY RELATED ELECTRICAL
—	SPECIAL CONCERNS ITEM

**NUCLEAR SAFETY RELATED**

NUTECH FILE No. 30.2363.0213

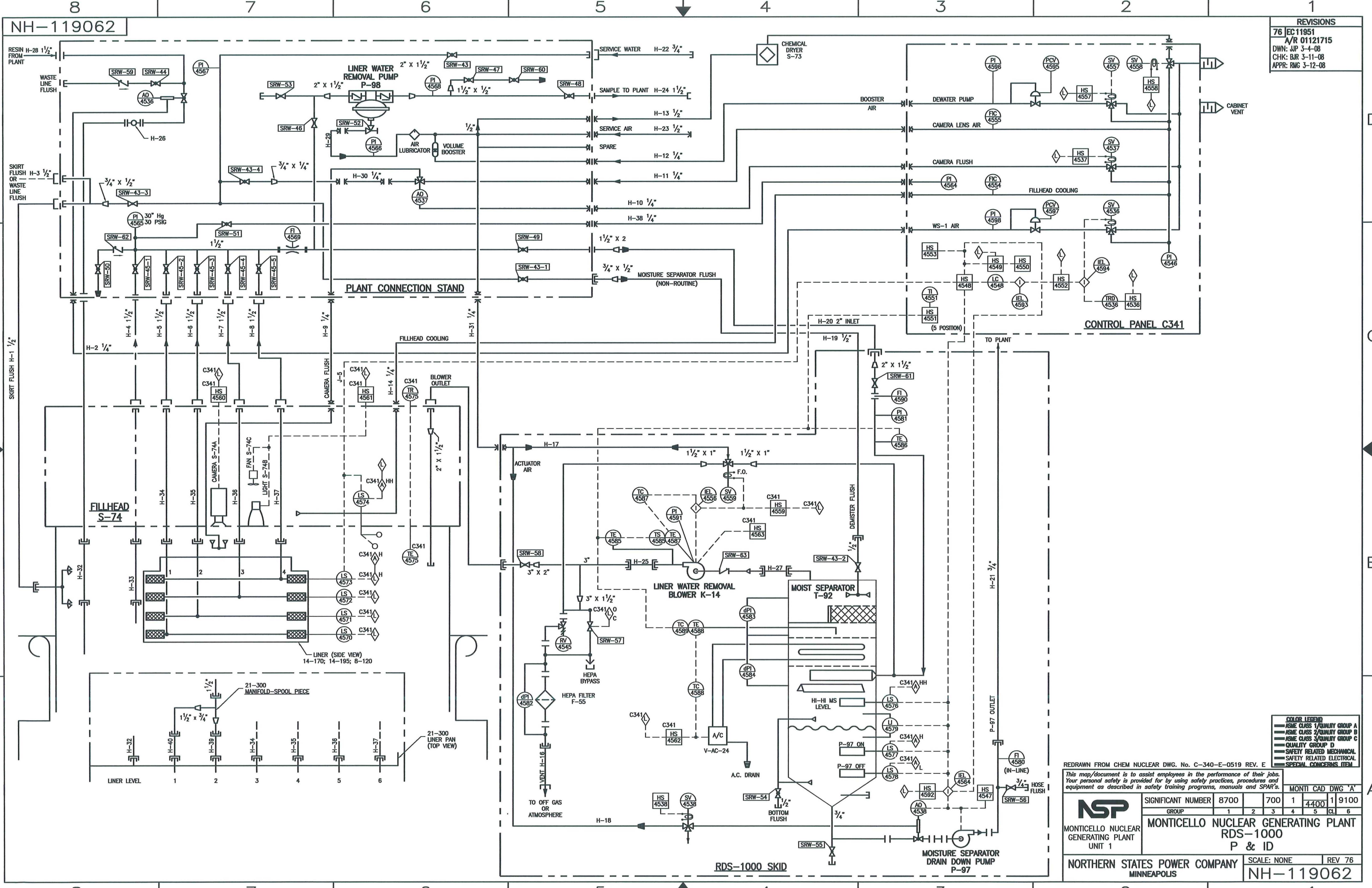
This map/document is to assist employees in the performance of their jobs. Your personal safety is provided for by using safety practices, procedures and equipment as described in safety training programs, manuals and SPAR's. MONTI CAD DWG "H"

P&ID COMBUSTIBLE GAS CONTROL SYSTEM	
DIVISION II (WEST)	
MONTICELLO NUCLEAR GENERATING PLANT	SCALE: NONE
Xcel Energy	REV 78
NH-94897	



withheld from public disclosure under 10 CFR 2.390





REVISIONS	
76	EC 11951
A/R 01121715	
DWN: AP 3-4-08	
CHK: BR 3-11-08	
APPR: RMG 3-12-08	

COLOR LEGEND	
—	ASME CLASS 1/QUALITY GROUP A
—	ASME CLASS 2/QUALITY GROUP B
—	ASME CLASS 3/QUALITY GROUP C
—	QUALITY GROUP D
—	SAFETY RELATED MECHANICAL
—	SAFETY RELATED ELECTRICAL
—	SPECIAL CONCERNS ITEM

REDRAWN FROM CHEM NUCLEAR DWG. No. C-340-E-0519 REV. E

This map/document is to assist employees in the performance of their jobs. Your personal safety is provided for by using safety practices, procedures and equipment as described in safety training programs, manuals and SPAR's.

<b>NSP</b> MONTICELLO NUCLEAR GENERATING PLANT UNIT 1	SIGNIFICANT NUMBER	8700	700	1	4400	1	9100
	GROUP	1	2	3	4	5	CL 6
	MONTICELLO NUCLEAR GENERATING PLANT RDS-1000 P & ID						

NORTHERN STATES POWER COMPANY  
MINNEAPOLIS

SCALE: NONE    REV 76  
NH-119062

REVISIONS	
83	EC16880
DWN: TJF 03-14-11 CHK: JAZ 3-21-11 APPR: AJD 3-21-11	
84	EC11018,12332 15425
DWN: TJF 05-11-11 CHK: DDW 6-9-11 APPR: AJD 6-9-11	
85	EC16881
DWN: BAT 6-27-11 CHK: WGN 6-27-11 APPR: AJD 6-27-11	
86	EC17014
DWN: JJP 3-6-12 CHK: PEB 3-6-12 APPR: SCP 3-6-12	
87	EC11445
DWN: BAT/NJM 11-20-14 CHK: RLJ 11-20-14 APPR: SMA 11.20.14	

