

- # NOTES:
1. SYSTEM WILL NOT BACKWASH IF ANY ONE OF THE FOLLOWING CONDITIONS NOT ASSOCIATED WITH THE FLOOR DRAIN FILTER SYSTEM ARE PRESENT;
    - A) BACKWASHING WASTE COLLECTOR FILTER T-25 (AO-2601, OPEN).
    - B) HIGH LEVEL IN WASTE SLUDGE TANK (LS-2698)
    - C) BACKWASHING FUEL POOL FILTER/DEMIN. T-41A (AO-2807 OPEN)
    - D) BACKWASHING FUEL POOL FILTER/DEMIN. T-47B (AO-2808 OPEN).

**BECHTEL, WESTERN POWER DIVISION JOB No. 10040, DWG. No. M-140**

*This map/document is to assist employees in the performance of their jobs. Your personal safety is provided for by using safety practices, procedures and equipment as described in safety training programs, manuals and SPAR's.*

**MONTECILLO NUCLEAR  
GENERATING PLANT  
UNIT 1**

**COLOR LEGEND**

- ASME CLASS 1/QUALITY GROUP A
- ASME CLASS 2/QUALITY GROUP B
- ASME CLASS 3/QUALITY GROUP C
- QUALITY GROUP D
- SAFETY RELATED MECHANICAL
- SAFETY RELATED ELECTRICAL
- SPECIAL CONCERNS ITEM

<b>SIGNIFICANT NUMBER</b>		8700	---	RW	<b>MONTE CAD DWG 'D'</b>			
<b>GROUP</b>	1	2	3	4	5	CL	6	

M-140

1 LRW SRW

**MONTECILLO NUCLEAR GENERATING PLANT**

**P&ID DIRTY RADWASTE SYSTEM**

**SHEET 2 OF 2**

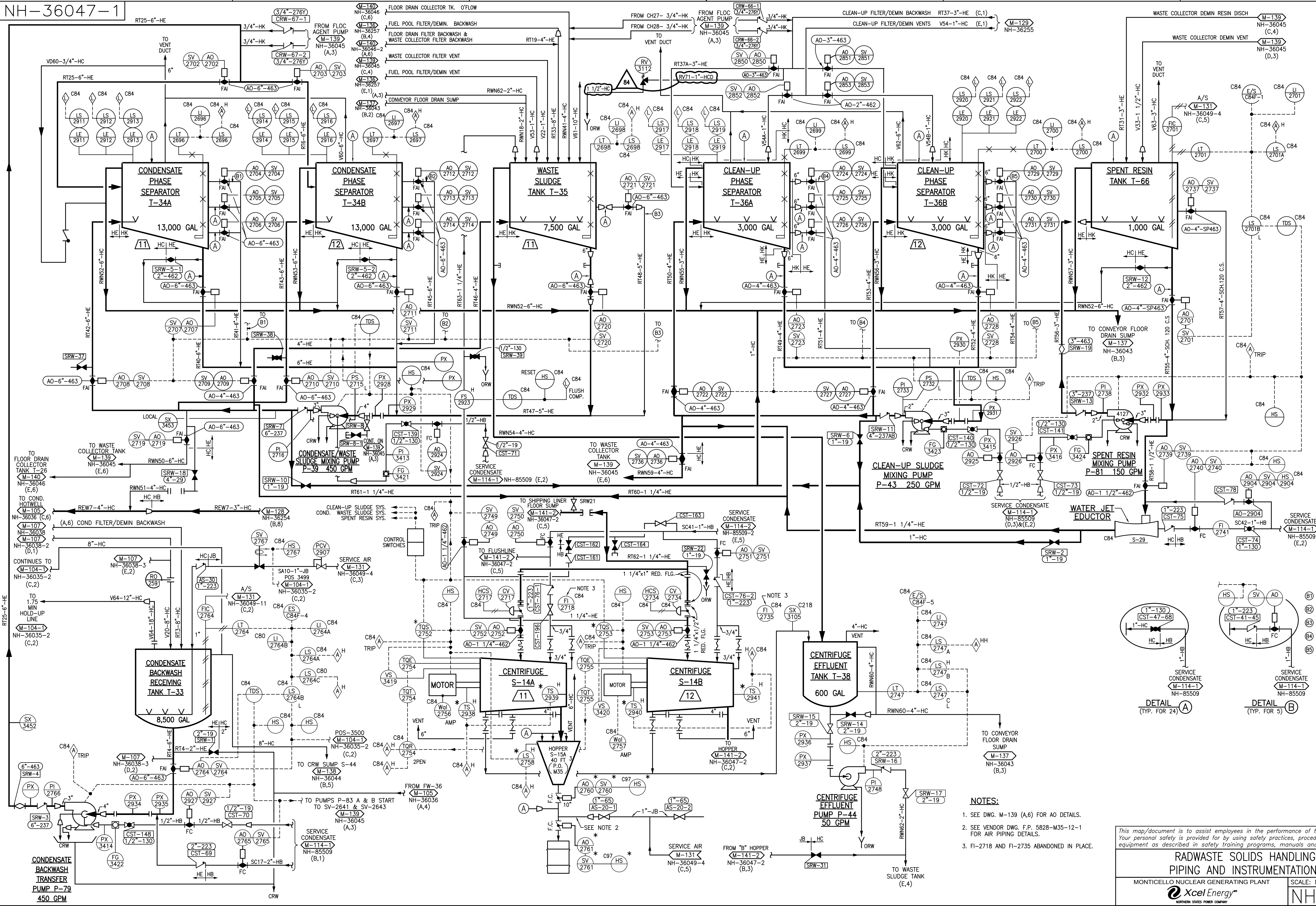
NH-36046-2

**NORTHERN STATES POWER COMPANY**

**MINNEAPOLIS**

**SCALE: NONE**

**REV 76**



REVISIONS	
77	EC11951 A/R 01121715 DWN: JWP 3-4-08 CHK: BJR 3-11-08 APPR: RMG 3-12-08
78	EC12127 A/R 01113763 DWN: JWP 3-17-08 CHK: BAL 3-20-08 APPR: JCG 3-24-08
79	EC9655 DWN: JWP 12-8-09 CHK: BAL 12-9-09 APPR: KEC 12-9-09
80	EC15325 DWN: JWP 3-15-10 CHK: PEB 3-15-10 APPR: JPC 3-17-10
81	EC11006 DWN: JWP 4-29-11 CHK: DWJ 4/29/11 APPR: AR 4-29-11
82	EC18294 DWN: JWP 6-20-11 CHK: AWL 6-20-11 APPR: JPC 6-20-11
83	EC20427 DWN: JWP 7-26-12 CHK: BAL 7-27-12 APPR: JPC 8-1-12
84	EC25356 DWN: JWP 3-12-15 CHK: BAL 3-16-15 APPR: AJW 3-16-15

COLOR LEGEND	
ASME CLASS 1/QUALITY GROUP A	
ASME CLASS 2/QUALITY GROUP B	
ASME CLASS 3/QUALITY GROUP C	
QUALITY GROUP D	
SAFETY RELATED MECHANICAL	
SPECIAL CONCERNS ITEM	

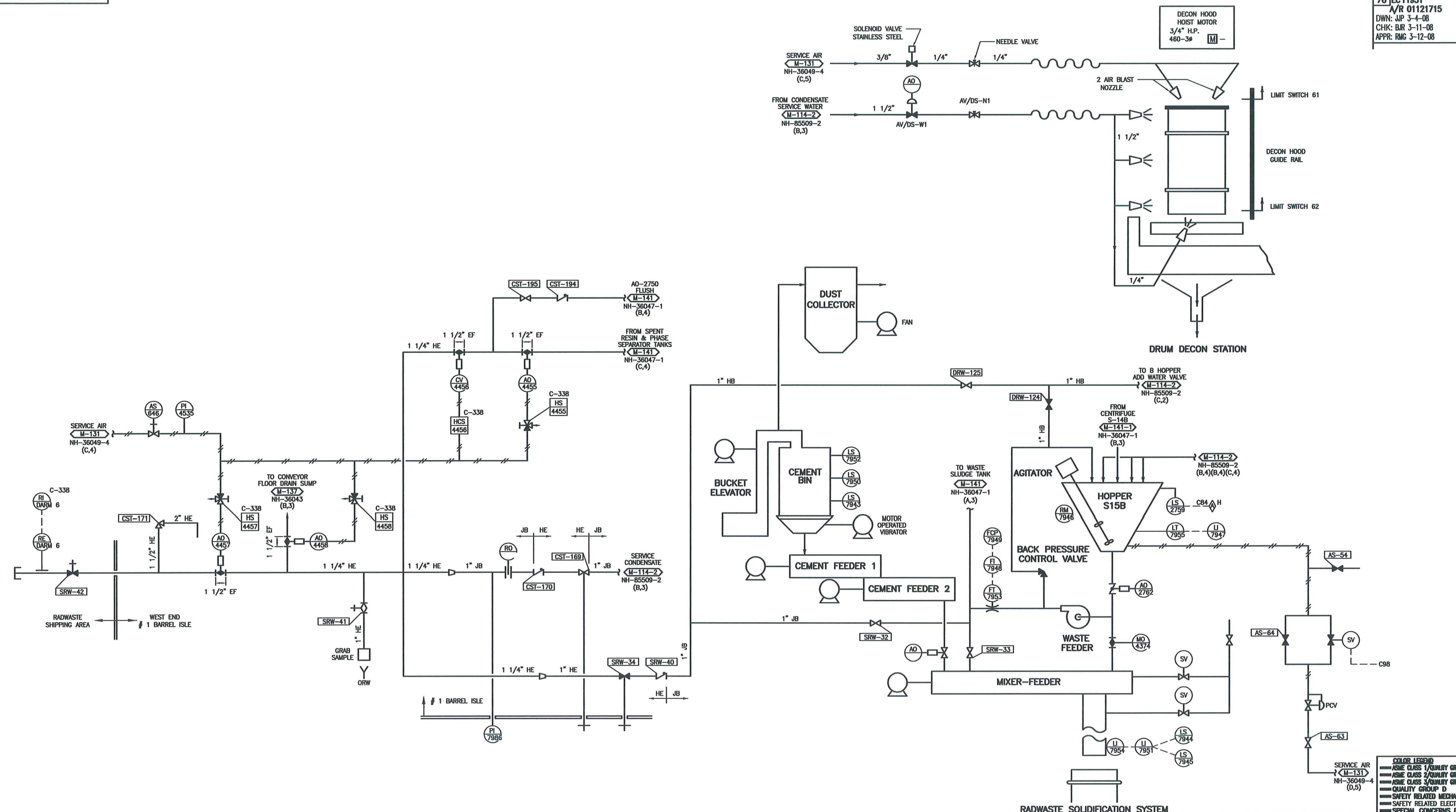
- NOTES:**
- SEE DWG. M-139 (A,6) FOR AO DETAILS.
  - SEE VENDOR DWG. F.P. 5828-M35-12-1 FOR AIR PIPING DETAILS.
  - FI-2718 AND FI-2735 ABANDONED IN PLACE.

This map/document is to assist employees in the performance of their jobs. Your personal safety is provided for by using safety practices, procedures and equipment as described in safety training programs, manuals and SPAR's.

**RADWASTE SOLIDS HANDLING SYSTEM**  
**PIPING AND INSTRUMENTATION DIAGRAM**

MONTICELLO NUCLEAR GENERATING PLANT  
 Xcel Energy  
 NORTHERN STATES POWER COMPANY

SCALE: NONE  
 REV 84  
 NH-36047-1



This map/document is to assist employees in the performance of their jobs. Your personal safety is provided for by using safety practices, procedures and equipment as described in safety training programs, manuals and SPAR's.

**NSP**  
MONTICELLO NUCLEAR  
GENERATING PLANT  
UNIT 1

NORTHERN STATES POWER COMPANY  
MINNEAPOLIS

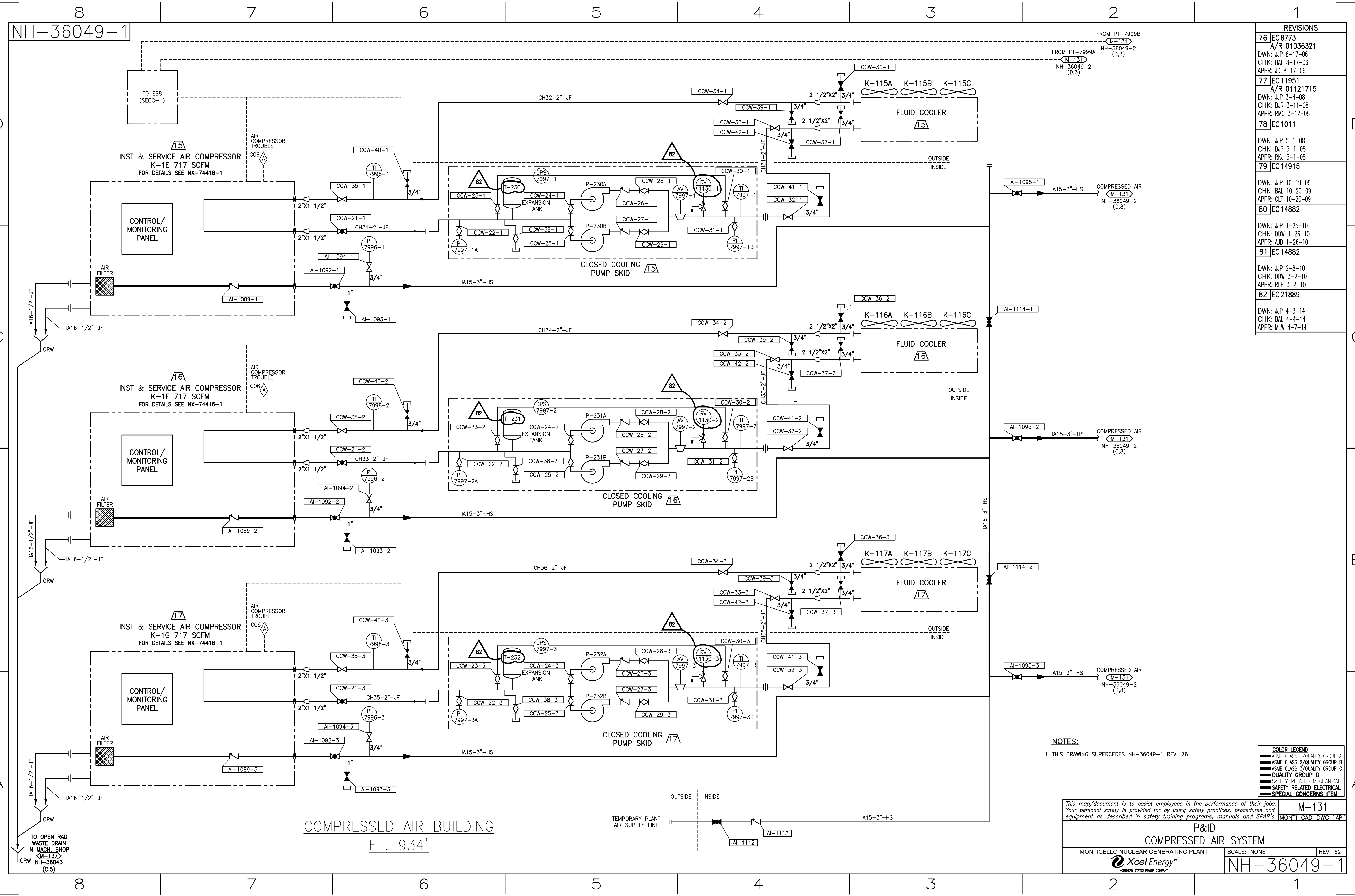
**M-141-2**  
MONTI CAD DWG 'G'

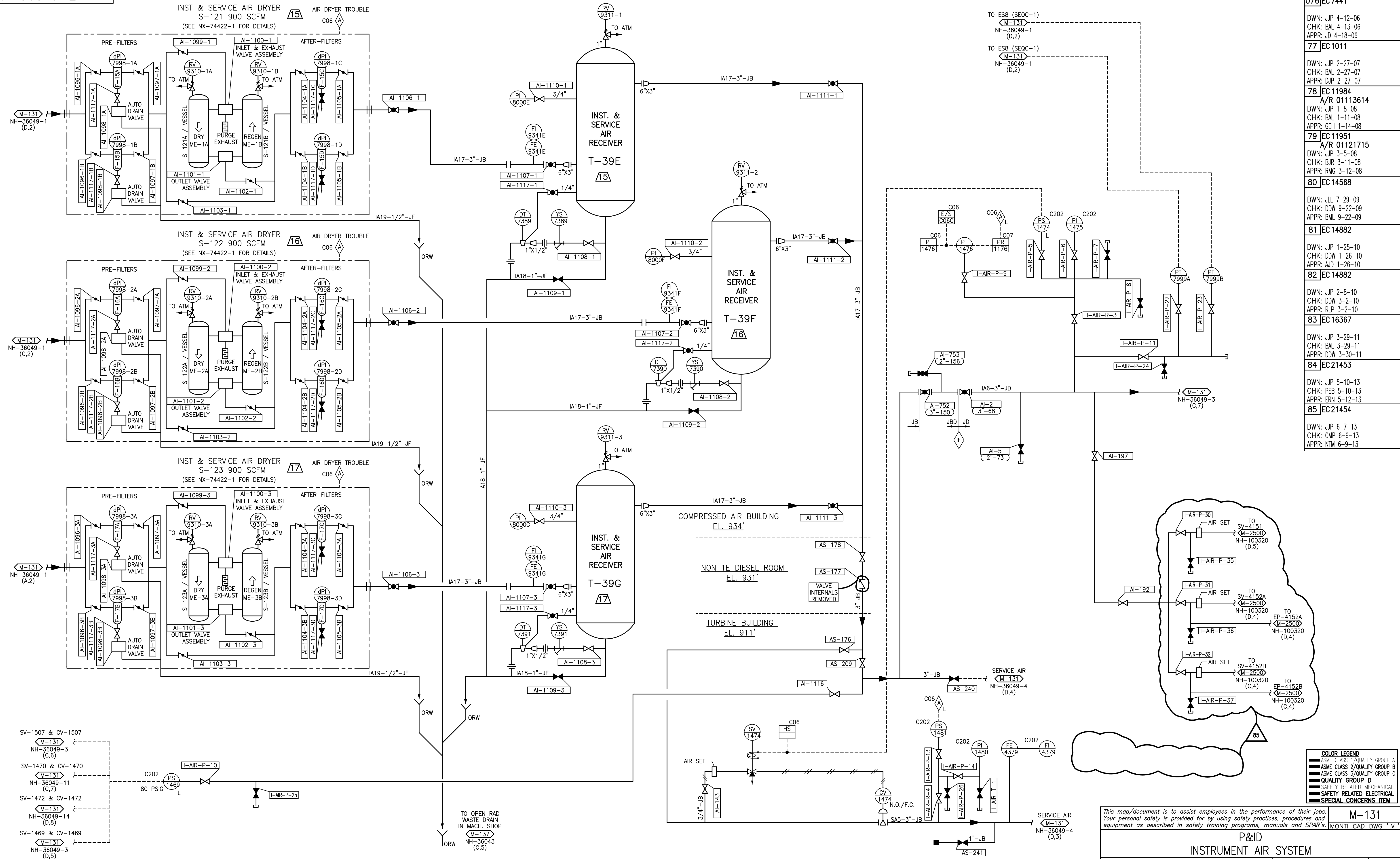
SIGNIFICANT NUMBER	8700	RW	1	4420	1	SRW
GROUP	1	2	3	4	5	6

**MONTICELLO NUCLEAR GENERATING PLANT**  
**P&ID**  
**RADWASTE SOLIDS HANDLING SYSTEM**

SCALE: NONE	REV 76
-------------	--------

**NH-36047-2**





REVISIONS	
<b>076</b>	<b>EC 7441</b>
DWN: JJP 4-12-06 CHK: BAL 4-13-06 APPR: JD 4-18-06	
<b>77</b>	<b>EC 1011</b>
DWN: JJP 2-27-07 CHK: BAL 2-27-07 APPR: DJP 2-27-07	
<b>78</b>	<b>EC 11984</b>
A/R 01113614	
DWN: JJP 1-8-08 CHK: BAL 1-11-08 APPR: GEH 1-14-08	
<b>79</b>	<b>EC 11951</b>
A/R 01121715	
DWN: JJP 3-5-08 CHK: BUR 3-11-08 APPR: RMG 3-12-08	
<b>80</b>	<b>EC 14568</b>
DWN: JLL 7-29-09 CHK: DDW 9-22-09 APPR: BML 9-22-09	
<b>81</b>	<b>EC 14882</b>
DWN: JJP 1-25-10 CHK: DDW 1-26-10 APPR: AJD 1-26-10	
<b>82</b>	<b>EC 14882</b>
DWN: JJP 2-8-10 CHK: DDW 3-2-10 APPR: RLP 3-2-10	
<b>83</b>	<b>EC 16367</b>
DWN: JJP 3-29-11 CHK: BAL 3-29-11 APPR: DDW 3-30-11	
<b>84</b>	<b>EC 21453</b>
DWN: JJP 5-10-13 CHK: PEB 5-10-13 APPR: ERN 5-12-13	
<b>85</b>	<b>EC 21454</b>
DWN: JJP 6-7-13 CHK: GMP 6-9-13 APPR: NTM 6-9-13	

This map/document is to assist employees in the performance of their jobs. Your personal safety is provided for by using safety practices, procedures and equipment as described in safety training programs, manuals and SPAR's.	<b>M-131</b> MONTI CAD DWG 'V'
---	-----------------------------------

P&ID  
INSTRUMENT AIR SYSTEM

MONTICELLO NUCLEAR GENERATING PLANT

SCALE: NONE	REV 85
NH-36049-2	

**COLOR LEGEND**

■	ASME CLASS 1/QUALITY GROUP A
■	ASME CLASS 2/QUALITY GROUP B
■	ASME CLASS 3/QUALITY GROUP C
■	QUALITY GROUP D
■	SAFETY RELATED MECHANICAL
■	SAFETY RELATED ELECTRICAL
■	SPECIAL CONCERNS ITEM

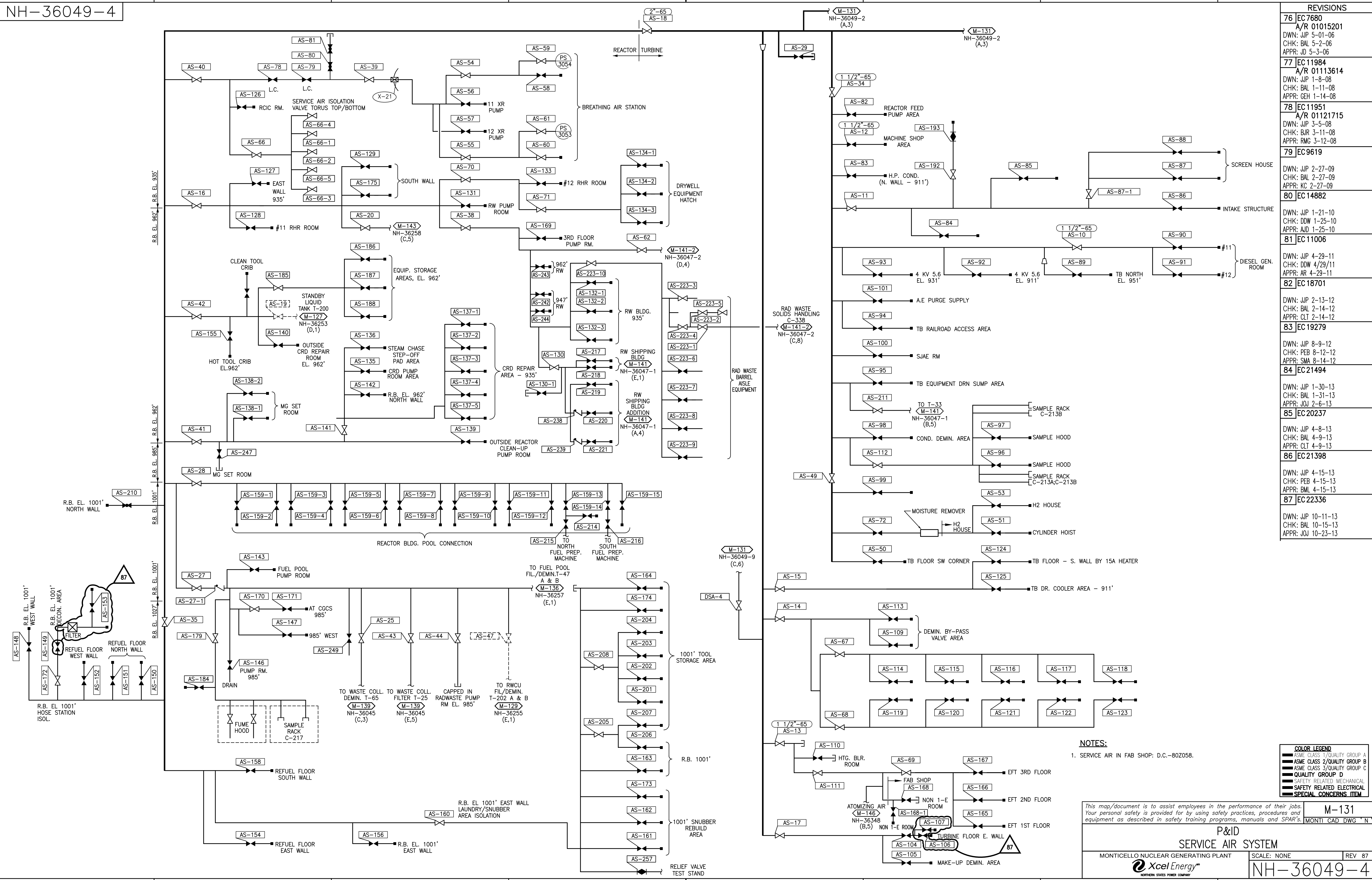
A

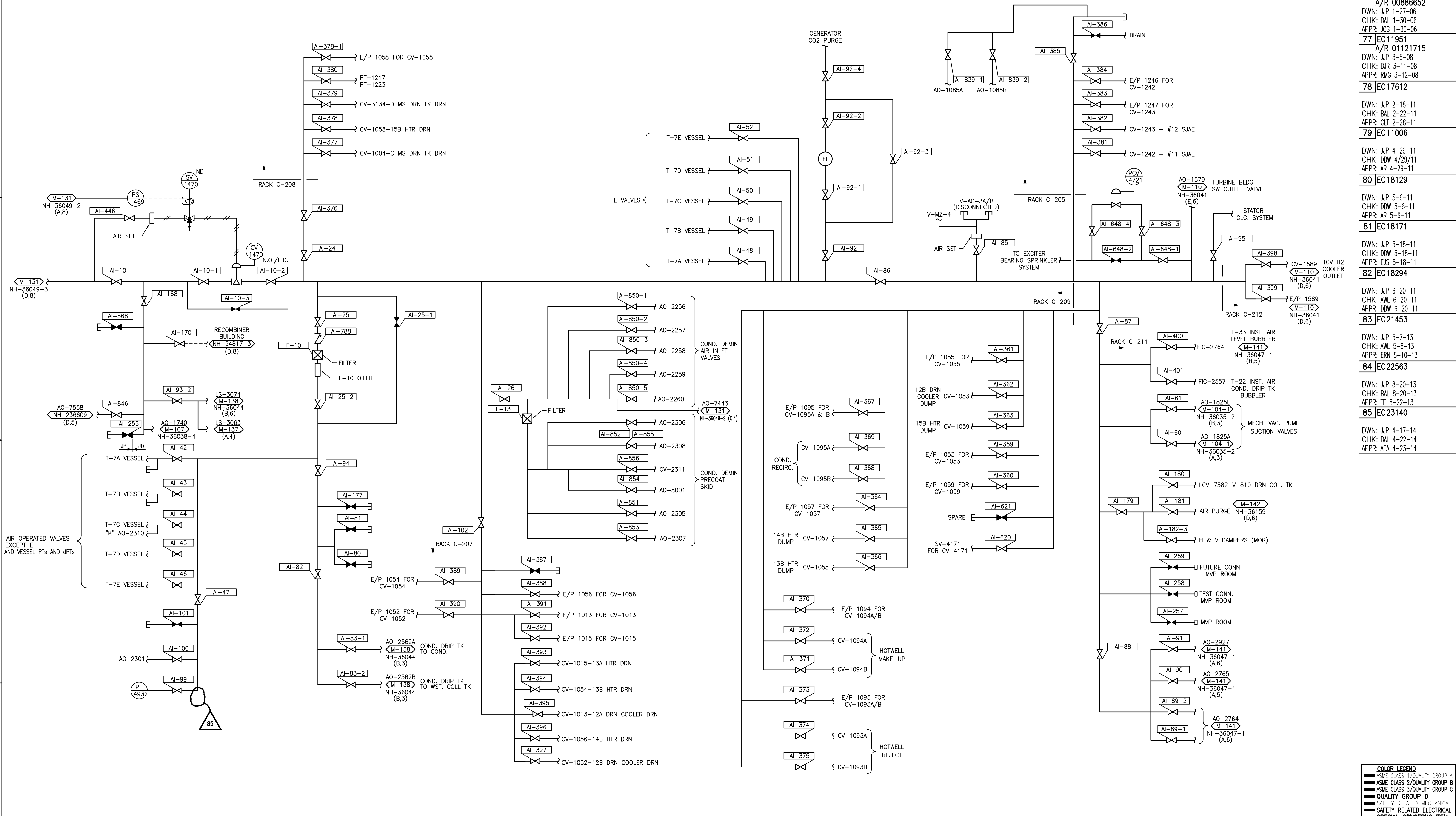
A

M-131



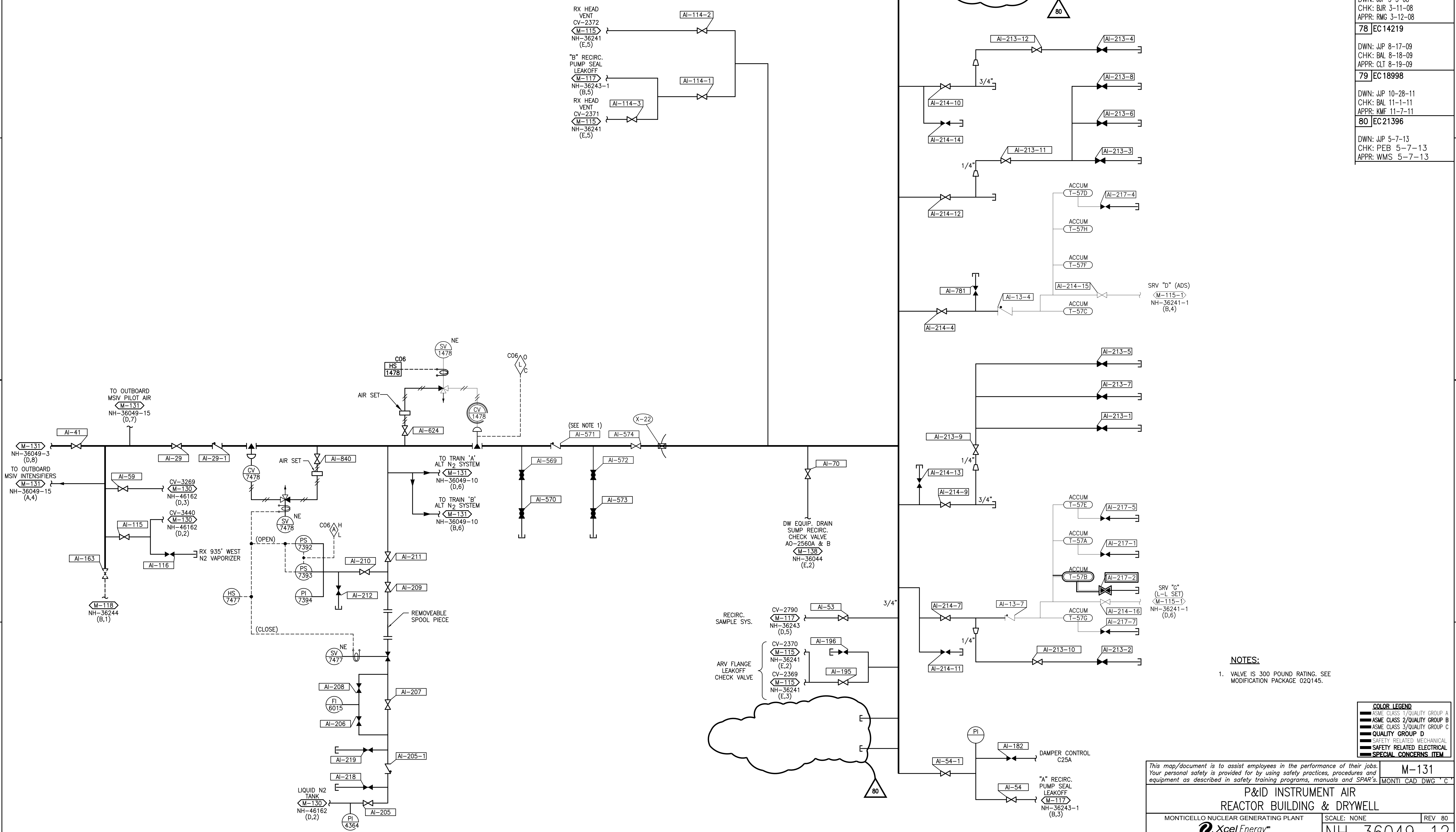
NORTHERN STATES POWER COMPANY





REVISIONS	
076	EC0000000829 A/R 00886652 DWN: JJP 1-27-06 CHK: BAL 1-30-06 APPR: JCG 1-30-06
77	EC11951 A/R 01121715 DWN: JJP 3-5-08 CHK: BUR 3-11-08 APPR: RMG 3-12-08
78	EC17612 DWN: JJP 2-18-11 CHK: BAL 2-22-11 APPR: CLT 2-28-11
79	EC11006 DWN: JJP 4-29-11 CHK: DDW 4/29/11 APPR: AR 4-29-11
80	EC18129 DWN: JJP 5-6-11 CHK: DDW 5-6-11 APPR: AR 5-6-11
81	EC18171 DWN: JJP 5-18-11 CHK: DDW 5-18-11 APPR: EJS 5-18-11
82	EC18294 DWN: JJP 6-20-11 CHK: AWL 6-20-11 APPR: DDW 6-20-11
83	EC21453 DWN: JJP 5-7-13 CHK: AWL 8-20-13 APPR: ERN 5-10-13
84	EC22563 DWN: JJP 8-20-13 CHK: BAL 8-20-13 APPR: TE 8-22-13
85	EC23140 DWN: JJP 4-17-14 CHK: BAL 4-22-14 APPR: AEA 4-23-14

REVISIONS	
76	EC 9741 A/R 01059540 DWN: JJP 6-18-07 CHK: BAL 6-18-07 APPR: EAN 6-20-07
77	EC 11951 A/R 01121715 DWN: JJP 3-5-08 CHK: BJR 3-11-08 APPR: RMG 3-12-08
78	EC 14219  DWN: JJP 8-17-09 CHK: BAL 8-18-09 APPR: OLT 8-19-09
79	EC 18998  DWN: JJP 10-28-11 CHK: BAL 11-1-11 APPR: KMF 11-7-11
80	EC 21396  DWN: JJP 5-7-13 CHK: PEB 5-7-13 APPR: WMS 5-7-13



NOTES:  
1. VALVE IS 300 POUND RATING. SEE MODIFICATION PACKAGE 02Q145.

COLOR LEGEND	
ASME CLASS 1/QUALITY GROUP A	
ASME CLASS 2/QUALITY GROUP B	
ASME CLASS 3/QUALITY GROUP C	
QUALITY GROUP D	
SAFETY RELATED MECHANICAL	
SAFETY RELATED ELECTRICAL	
SPECIAL CONCERNS ITEM	

This map/document is to assist employees in the performance of their jobs. Your personal safety is provided for by using safety practices, procedures and equipment as described in safety training programs, manuals and SPAR's.

**P&ID INSTRUMENT AIR**  
**REACTOR BUILDING & DRYWELL**

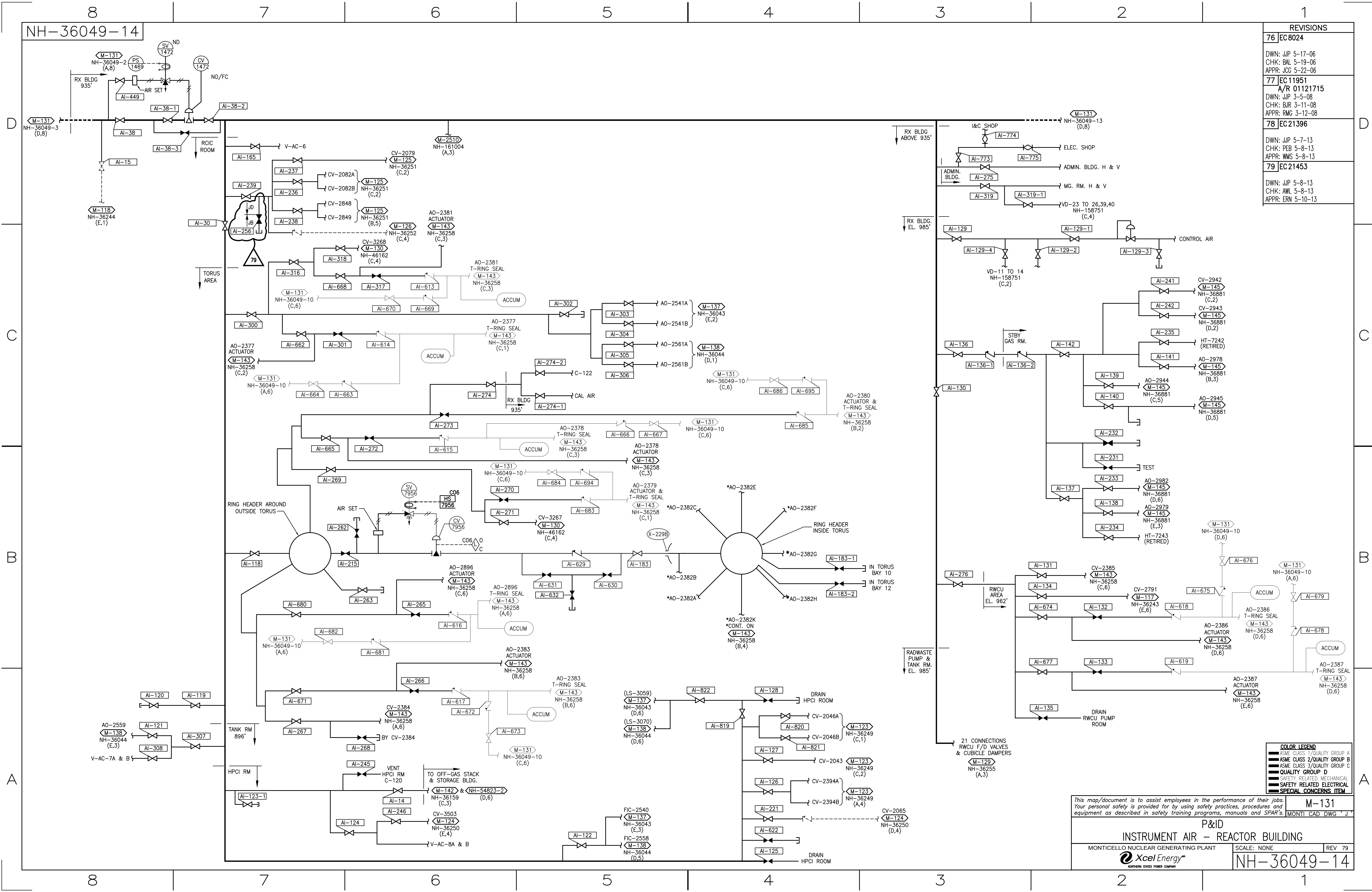
MONTICELLO NUCLEAR GENERATING PLANT

**Xcel Energy**  
NORTHERN STATES POWER COMPANY

M-131  
MONTI CAD DWG "C"

SCALE: NONE  
REV 80

**NH-36049-12**



NH-36049-15

## REVISIONS

76 EC9488

A/R 01045154

DWN: JIP 11-17-06

CHK: BAL 11-17-06

APPR: JH 11-21-06

77 EC11951

A/R 01121715

DWN: JIP 3-5-08

CHK: BJR 3-11-08

APPR: RMG 3-12-08

78 EC13054

DWN: JIP 8-25-08

CHK: BAL 8-25-08

APPR: MH 8-26-08

79 EC13800

DWN: JIP 12-30-08

CHK: BAL 1-6-09

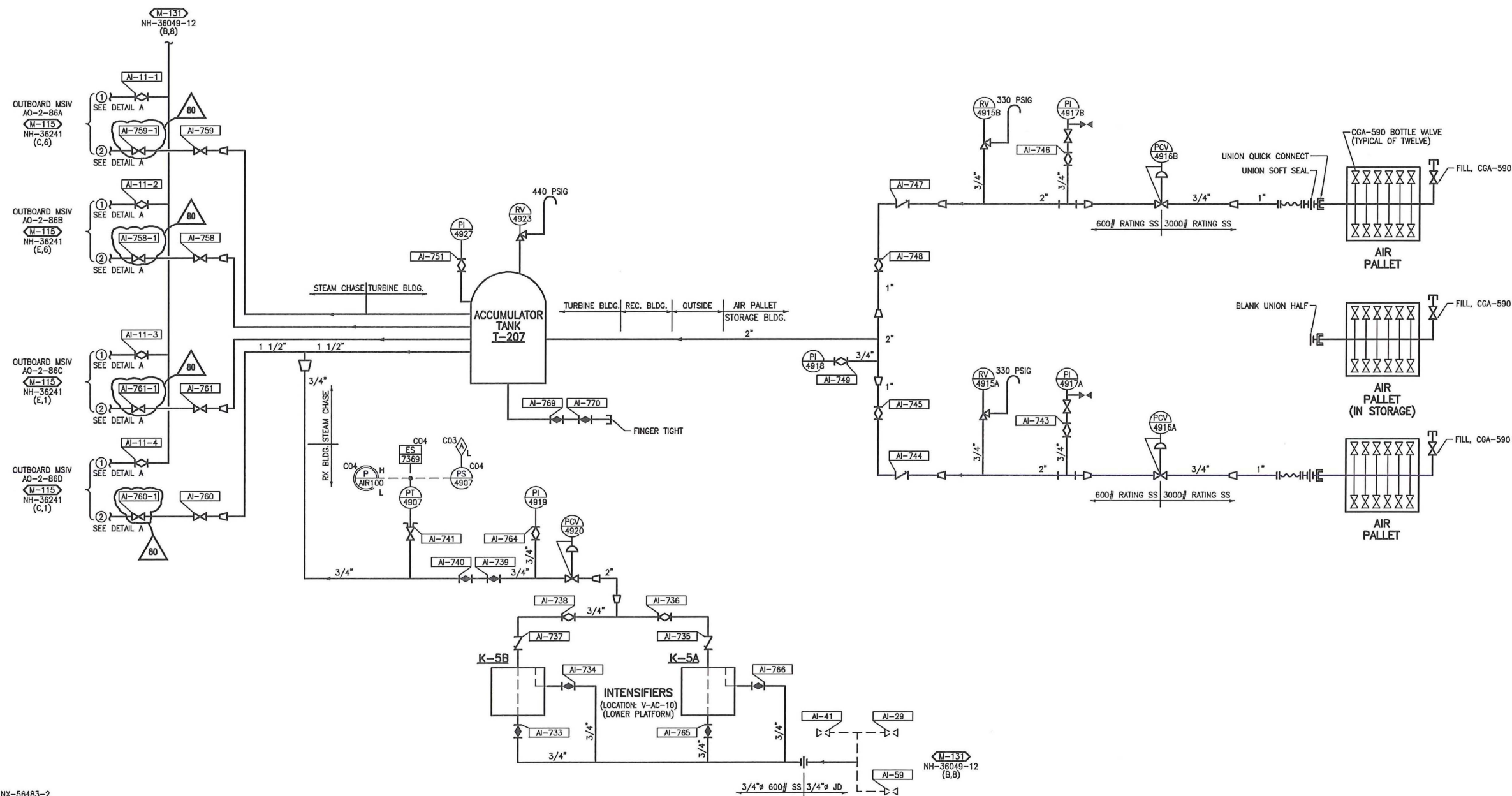
APPR: GEH 1-7-09

80 EC17025

DWN: JIP 3-17-11

CHK: BAL 3-17-11

APPR: DM 3-18-11



## DETAIL A

① PILOT AIR TO MSIV  
SOLENOID MANIFOLD② MAIN AIR TO MSIV  
PISTON VIA MANIFOLD  
AIR VALVE ASSEMBLY

SEE NX-56483-2

COLOR LEGEND	
—	ASME CLASS 1/QUALITY GROUP A
—	ASME CLASS 2/QUALITY GROUP B
—	ASME CLASS 3/QUALITY GROUP C
—	QUALITY GROUP D
—	SAFETY RELATED MECHANICAL
—	SAFETY RELATED ELECTRICAL
—	SPECIAL CONCERNS ITEM

This map/document is to assist employees in the performance of their jobs.  
Your personal safety is provided for by using safety practices, procedures and  
equipment as described in safety training programs, manuals and SPAR's.

M-131

MONTICELLO CAD DWG "A"

P&amp;ID

AIR SUPPLY TO OUTBOARD MSIV'S

MONTICELLO NUCLEAR GENERATING PLANT

Xcel Energy  
NORTHERN STATES POWER COMPANY

SCALE: NONE

REV 80

NH-36049-15

withheld from public disclosure under 10 CFR 2.390

withheld from public disclosure under 10 CFR 2.390

withheld from public disclosure under 10 CFR 2.390

withheld from public disclosure under 10 CFR 2.390

withheld from public disclosure under 10 CFR 2.390

withheld from public disclosure under 10 CFR 2.390