



UNITED STATES
NUCLEAR REGULATORY COMMISSION
WASHINGTON, D.C. 20555-0001

June 3, 2016

Mr. Phil Boggan
State Historic Preservation Officer
Louisiana Office of Cultural Development
P.O. Box 44247
Baton Rouge, LA 70804-4247

SUBJECT: WATERFORD STEAM ELECTRIC STATION, UNIT 3, LICENSE
RENEWAL REVIEW

Dear Mr. Boggan:

The U.S. Nuclear Regulatory Commission (NRC) is conducting a review of the environmental effects of renewing the operating license for Waterford Steam Electric Station, Unit 3 (Waterford 3). Waterford 3 is operated by Entergy Operations, Inc. (Entergy) and is located in St. Charles Parish, Louisiana, approximately 25 miles west of New Orleans, and 50 miles southeast of Baton Rouge, LA (see Enclosure 1). Entergy submitted an application for the renewal of the Waterford 3 operating license in a letter dated March 23, 2016, pursuant to Title 10 of the *Code of Federal Regulations* Part 54 (10 CFR Part 54). Under NRC regulations, the operating license for a nuclear power plant is issued for up to 40 years and may be renewed for up to an additional 20 years. The current operating license for Waterford 3 will expire on December 18, 2024.

As part of the NRC's license renewal review, a site-specific Supplemental Environmental Impact Statement (SEIS) to the "Generic Environmental Impact Statement for License Renewal of Nuclear Plants," NUREG-1437, is prepared under 10 CFR Part 51, NRC's environmental protection regulations for domestic licensing and related regulatory functions. These regulations also implement Section 102(2) of the National Environment Policy Act of 1969, as amended (NEPA). In accordance with 36 CFR 800.8(c), the NRC intends to comply with Section 106 of the National Historic Preservation Act of 1966, as amended (NHPA), through the NEPA process. The purpose of this letter is to initiate Section 106 consultation with the Louisiana Office of Cultural Development, Division of Archaeology under NHPA.

For the purposes of analysis, the NRC has defined the area of potential effects (APE) for the Waterford 3 license renewal undertaking as the area at the power plant site and its immediate environs that may be impacted by ongoing routine maintenance and operations activities during the license renewal term (see Enclosure 2). The APE may extend beyond the immediate Waterford 3 environs if Entergy's maintenance and operations activities affect offsite historic properties (see Enclosure 3). This determination is made irrespective of ownership or control of the lands of interest.

P. Boggan

- 2 -

Please submit any comments that you may have on the scope of the environmental review by August 1, 2016. Written comments should be submitted by mail to:

Cindy Bladey, Chief
Rules, Announcements, and Directives Branch (RADB)
Office of Administration, Mailstop OWFN-12-H08
U.S. Nuclear Regulatory Commission
Washington, DC 20555

Electronic comments may be submitted to the NRC by accessing www.regulations.gov and searching for Docket ID NRC-2016-0078. The Waterford 3 license renewal application is available at: <http://www.nrc.gov/reactors/operating/licensing/renewal/applications/waterford.html>.

The NRC plans to hold an environmental scoping meeting on June 8, 2016. The meeting will be held at the St. Charles Parish Emergency Operation Center, 15026 River Road, Hahnville, Louisiana, 70057. The meeting will convene at 7:00 p.m. and continue until 9:00 p.m., as necessary. The NRC expects to publish the draft SEIS in May 2017. A copy of the document will be sent to you for your review and comment. After consideration of public comments received, the NRC will prepare a final SEIS, which is scheduled to be issued in January 2018. If you have any questions concerning the NRC's license renewal review, please contact Jeffrey Rikhoff, Senior Environmental Scientist, at 301-415-1090 or by e-mail at Jeffrey.Rikhoff@nrc.gov.

Sincerely,

/RA/

James G. Danna, Chief
Environmental Review and Project Branch
Division of License Renewal
Office of Nuclear Reactor Regulation

Docket No. 50-382

Enclosures:

1. Area Map, 50-mile radius
2. Area Map, 6-mile radius
3. Waterford 3 Site Area Map

cc w/encls: Listserv

P. Boggan

- 2 -

Please submit any comments that you may have on the scope of the environmental review by August 1, 2016. Written comments should be submitted by mail to:

Cindy Bladey, Chief
Rules, Announcements, and Directives Branch (RADB)
Office of Administration, Mailstop OWFN-12-H08
U.S. Nuclear Regulatory Commission
Washington, DC 20555

Electronic comments may be submitted to the NRC by accessing www.regulations.gov and searching for Docket ID NRC-2016-0078. The Waterford 3 license renewal application is available at: <http://www.nrc.gov/reactors/operating/licensing/renewal/applications/waterford.html>.

The NRC plans to hold an environmental scoping meeting on June 8, 2016. The meeting will be held at the St. Charles Parish Emergency Operation Center, 15026 River Road, Hahnville, Louisiana, 10057. The meeting will convene at 7:00 p.m. and continue until 9:00 p.m., as necessary. The NRC expects to publish the draft SEIS in May 2017. A copy of the document will be sent to you for your review and comment. After consideration of public comments received, the NRC will prepare a final SEIS, which is scheduled to be issued in January 2018. If you have any questions concerning the NRC's license renewal review, please contact Jeffrey Rikhoff, Senior Environmental Scientist, at 301-415-1090 or by e-mail at Jeffrey.Rikhoff@nrc.gov.

Sincerely,

/RA/

James G. Danna, Chief
Environmental Review and Project Branch
Division of License Renewal
Office of Nuclear Reactor Regulation

Docket No. 50-382

Enclosures:

1. Area Map, 50-mile radius
2. Area Map, 6-mile radius
3. Waterford 3 Site Area Map

cc: Listserv

DISTRIBUTION: See next page

ADAMS Accession Nos: ML16147A280

OFFICE	LA:DLR*RPB1	PM:DLR:RERP	RERP Technical Staff Member	BC:DLR:RERP
NAME	IBetts	EKeegan	JRikhoff	JDanna
DATE	6/2 /16	6/2 /16	6/2 /16	6/3 /16

OFFICIAL RECORD COPY

SUBJECT: WATERFORD STEAM ELECTRIC STATION, UNIT 3, LICENSE
RENEWAL REVIEW

DISTRIBUTION:

PUBLIC

RidsNrrDlr Resource

RidsNrrDlrRpb1 Resource

RidsNrrDlrRerb Resource

RidsNrrDlrRarb Resource

RidsNrrDlrRasb Resource

RidsNrrDlrRsrg Resource

RidsOpaMail

RidsOgcMailCenter

EKeegan

JRikhoff

Legend

- WF3
- Airport
- Surface Water
- 50-Mile Radius
- Municipality
- Parish
- State
- Interstate
- U.S. Route
- Railroad

(USCB 2014c; USDOT 2014; USGS 2014a)

Enclosure 1

Area Map, 6-mile radius



(Entergy 2013a; USCB 2014c; USDOT 2014; USGS 2014a)

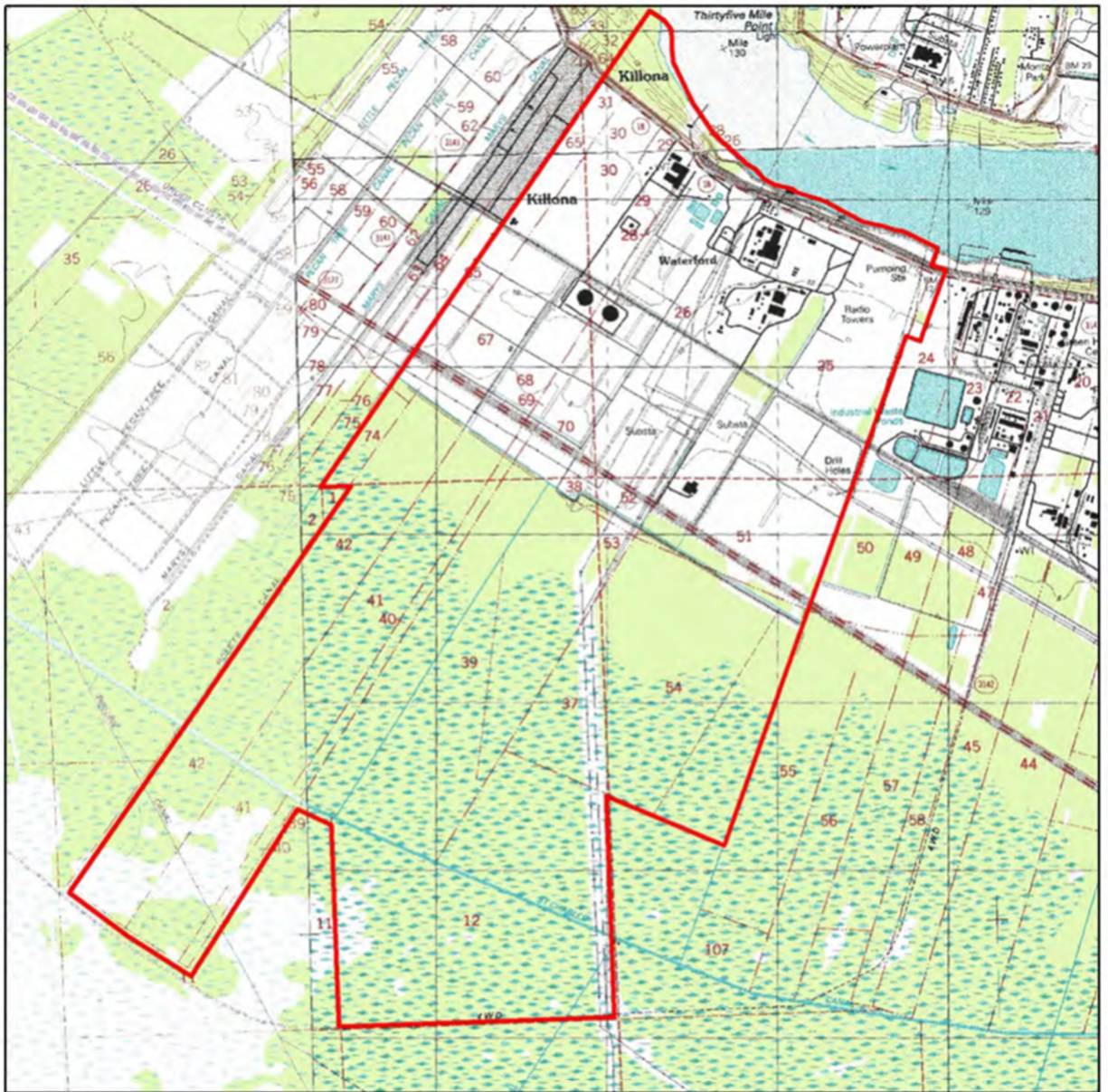
Legend

- | | | | |
|--|---------------|--|-------------------|
| | Airport | | Property Boundary |
| | Heliport | | Interstate |
| | Surface Water | | U.S. Route |
| | 6-Mile Radius | | State Route |
| | Census Place | | Local Roads |
| | Parish | | Railroad |

0 2 4 Miles

Enclosure 2

Waterford 3 Site Area Map



(Entergy 2013a; USDA 2014a)

Legend

— Property Boundary



A horizontal scale bar with a black segment from 0 to 0.5 and a white segment from 0.5 to 1. The word "Miles" is at the right end.

Enclosure 3