

IPRenewal NPEmails

From: Dolansky, Robert J <RDolans@entergy.com>
Sent: Friday, April 29, 2016 9:58 AM
To: Floyd, Niklas
Subject: [External_Sender] FW: Extra screen shots for Baffle Bolts
Attachments: Screen Shots IPP BFB UT.docx

From: Goodman, Matthew A [mailto:goodmama@westinghouse.com]
Sent: Thursday, April 28, 2016 3:31 PM
To: Allen, Robert E; Dolansky, Robert J
Subject: RE: Extra screen shots for Baffle Bolts

Attached is the document Pat pulled together, showing the screen shots of the bolts you requested. The left side is the calibration bolt to help compare to the results on the right hand side.

Let me know if you need anything else.

Regards,
Matt

From: Allen, Robert E [mailto:RAllen5@entergy.com]
Sent: Thursday, April 28, 2016 1:36 PM
To: Goodman, Matthew A; Dolansky, Robert J
Subject: RE: Extra screen shots for Baffle Bolts

Matt,

The bolt & plate number listed below are correct.

Thanks for your support,
Bob A.

From: Goodman, Matthew A [mailto:goodmama@westinghouse.com]
Sent: Thursday, April 28, 2016 12:46 PM
To: Dolansky, Robert J; Allen, Robert E
Subject: Extra screen shots for Baffle Bolts

Bob,

I will get Pat working on the screen shots of all 10 channels for the following bolts.

Bolt #	Plate #
E-29	8R
E-68	20
A-12	4
E-71	21
E-2	1R

Regards,

Matt Goodman
Project Manager



Office: (724) 722-6037
Mobile: (724) 689-6596
Fax: (724) 722-5830

This e-mail may contain proprietary information of the sending organization. Any unauthorized or improper disclosure, copying, distribution, or use of the contents of this e-mail and attached document(s) is prohibited. The information contained in this e-mail and attached document(s) is intended only for the personal and private use of the recipient(s) named above. If you have received this communication in error, please notify the sender immediately by email and delete the original e-mail and attached document(s).

This e-mail may contain proprietary information of the sending organization. Any unauthorized or improper disclosure, copying, distribution, or use of the contents of this e-mail and attached document(s) is prohibited. The information contained in this e-mail and attached document(s) is intended only for the personal and private use of the recipient(s) named above. If you have received this communication in error, please notify the sender immediately by email and delete the original e-mail and attached document(s).

Hearing Identifier: IndianPointUnits2and3NonPublic_EX
Email Number: 5864

Mail Envelope Properties (ECCFBB6589456C4185C63115574A08796B388351)

Subject: [External_Sender] FW: Extra screen shots for Baffle Bolts
Sent Date: 4/29/2016 9:57:42 AM
Received Date: 4/29/2016 9:58:24 AM
From: Dolansky, Robert J

Created By: RDolans@entergy.com

Recipients:
"Floyd, Niklas" <Niklas.Floyd@nrc.gov>
Tracking Status: None

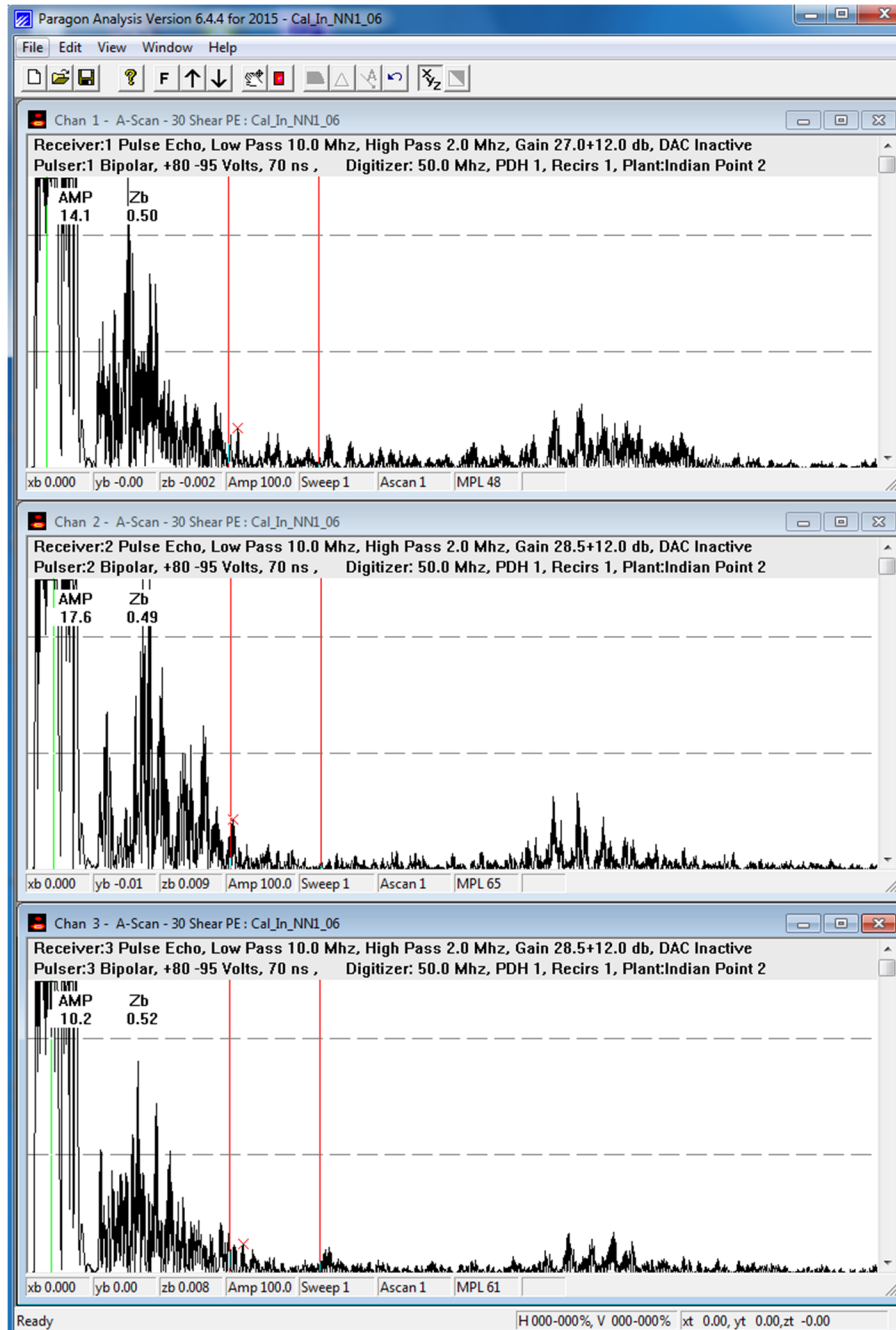
Post Office: jdcxmetsp004.etrsouth.corp.entergy.com

Files	Size	Date & Time
MESSAGE	2481	4/29/2016 9:58:24 AM
image001.jpg	4250	
Screen Shots IPP BFB UT.docx		3384916

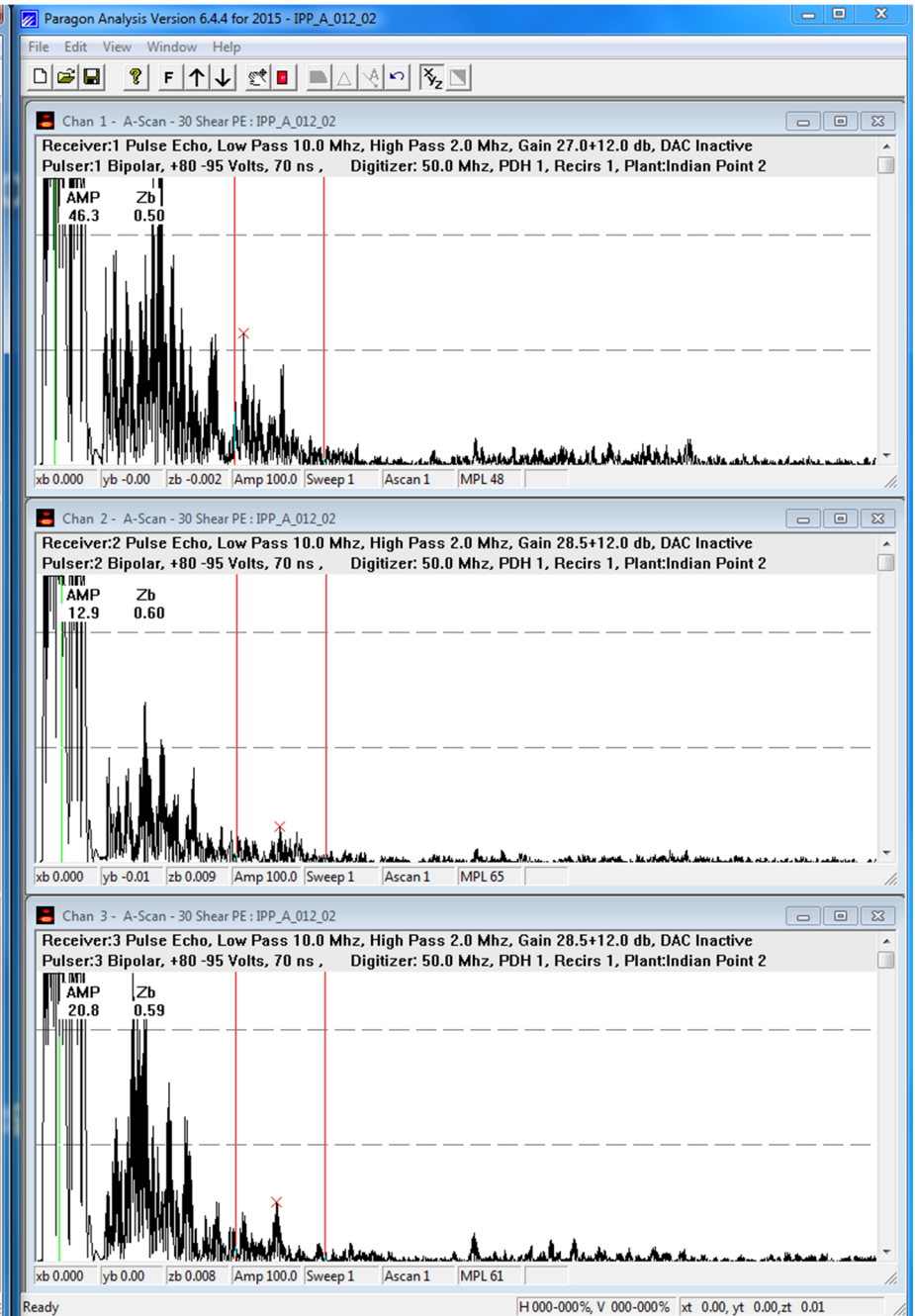
Options
Priority: Standard
Return Notification: No
Reply Requested: No
Sensitivity: Normal
Expiration Date:
Recipients Received:



BOLT A-012, CHANNELS 1-3

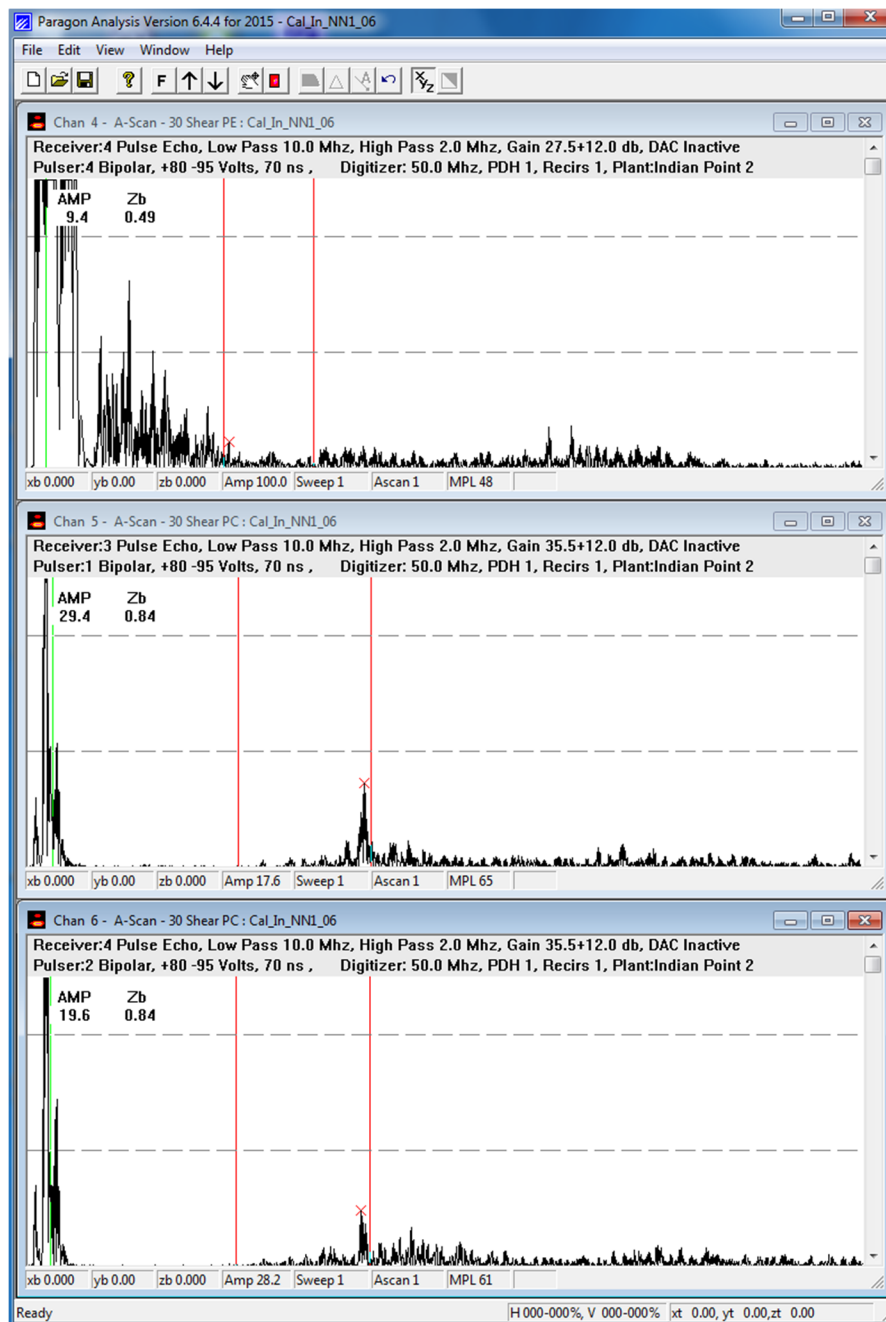


Calibration Bolt NN1

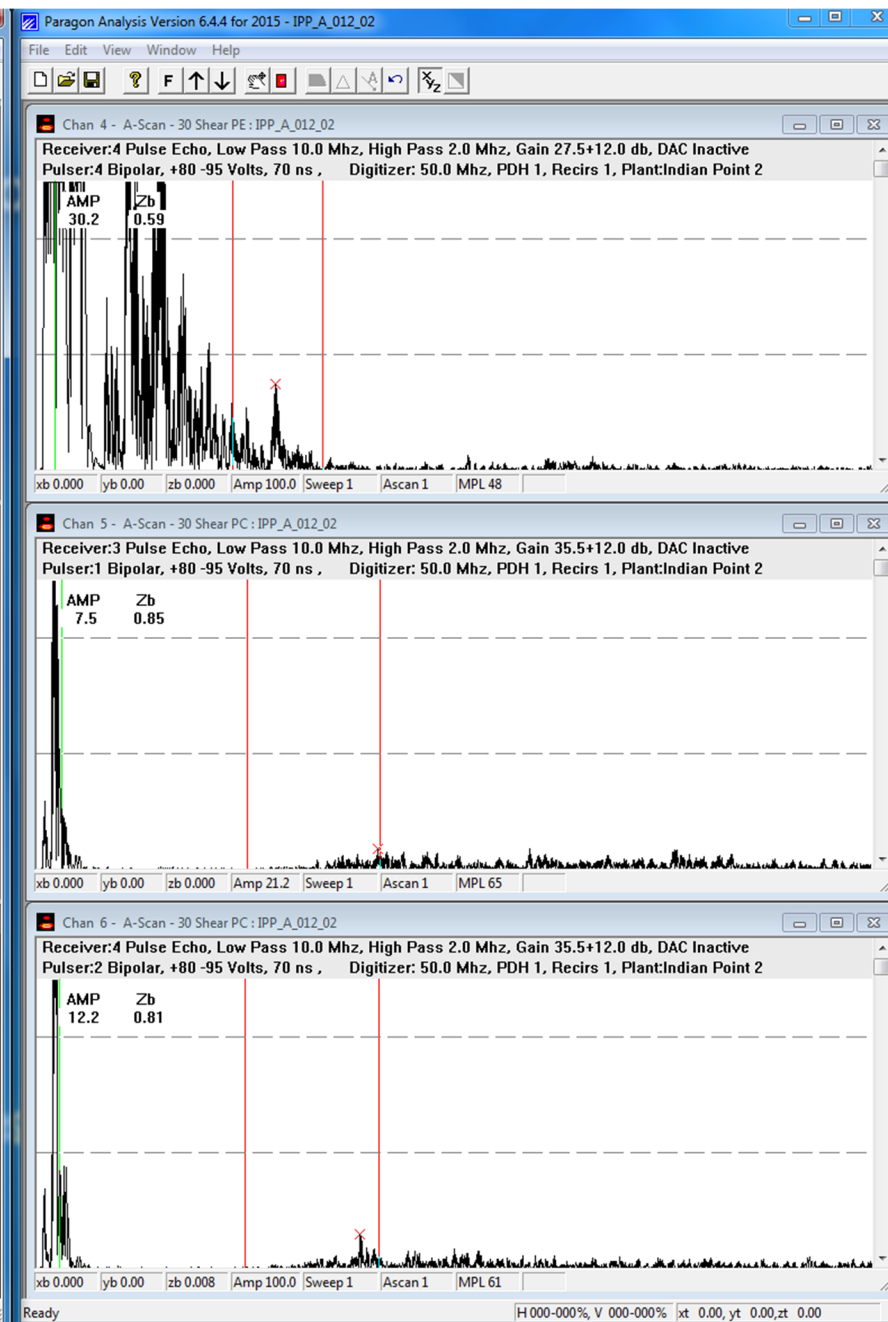


Bolt A-012

BOLT A-012, CHANNELS 4-6

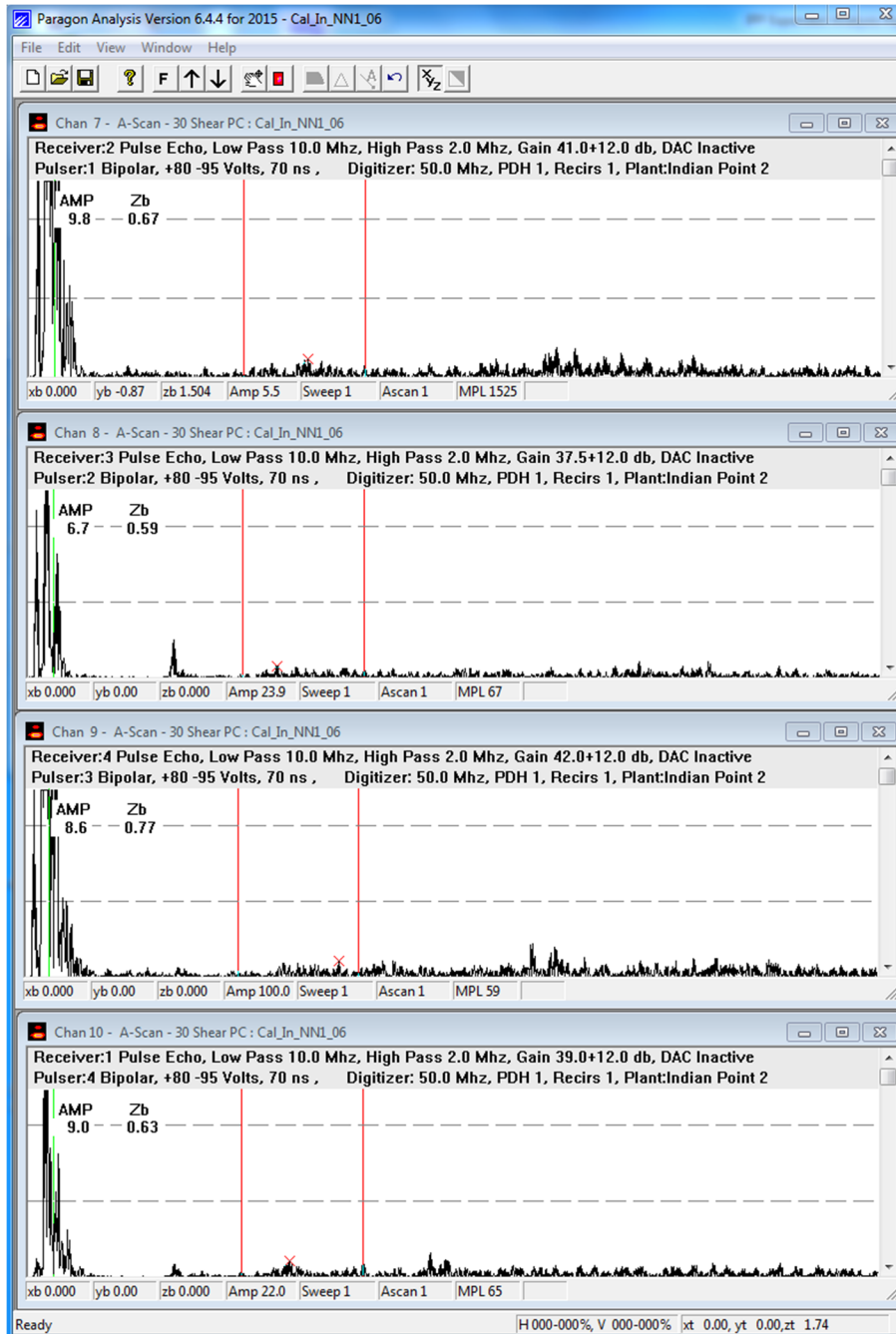


Calibration Bolt NN1

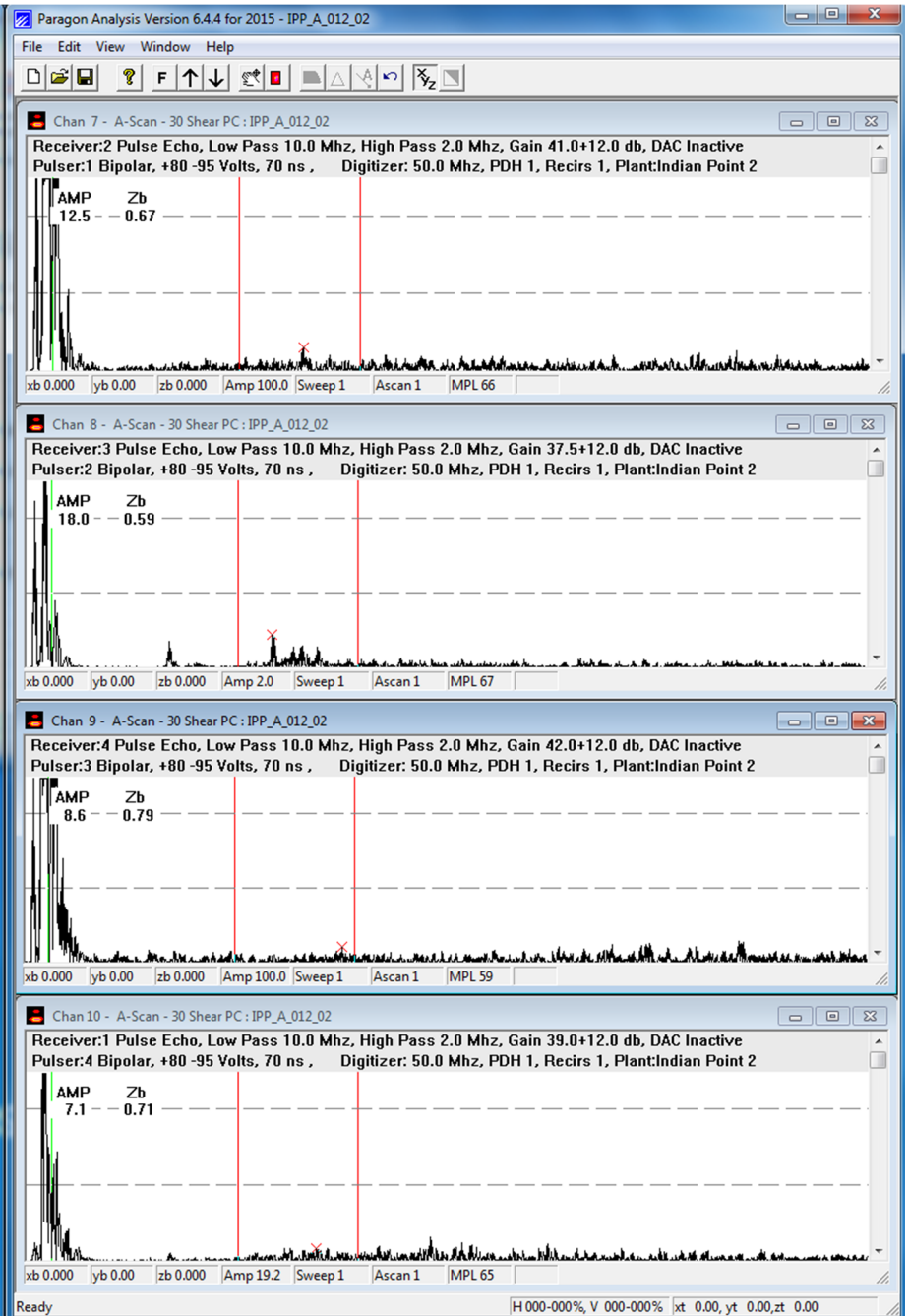


Bolt A-012

BOLT A-012, CHANNELS 7-10

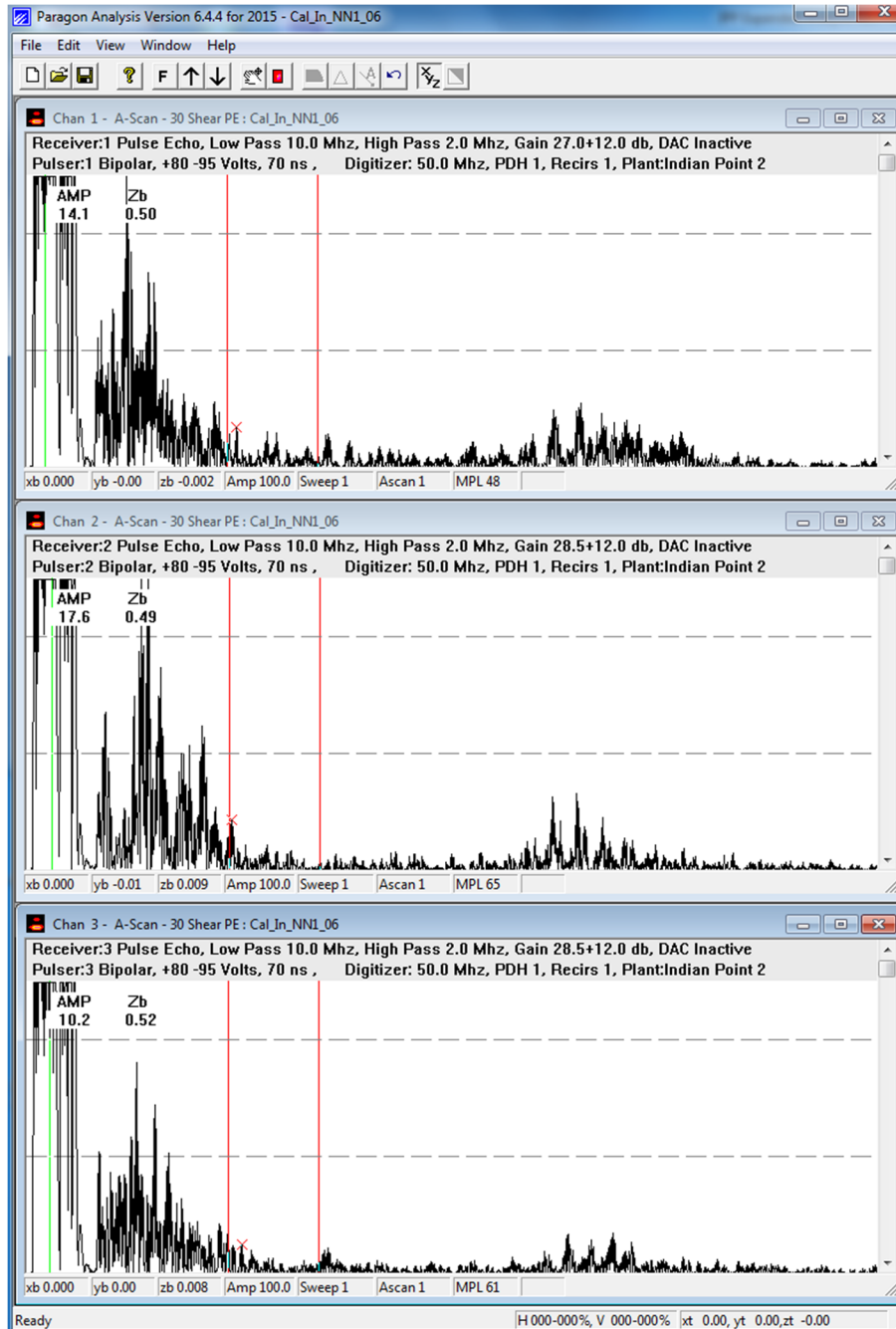


Calibration Bolt NN1

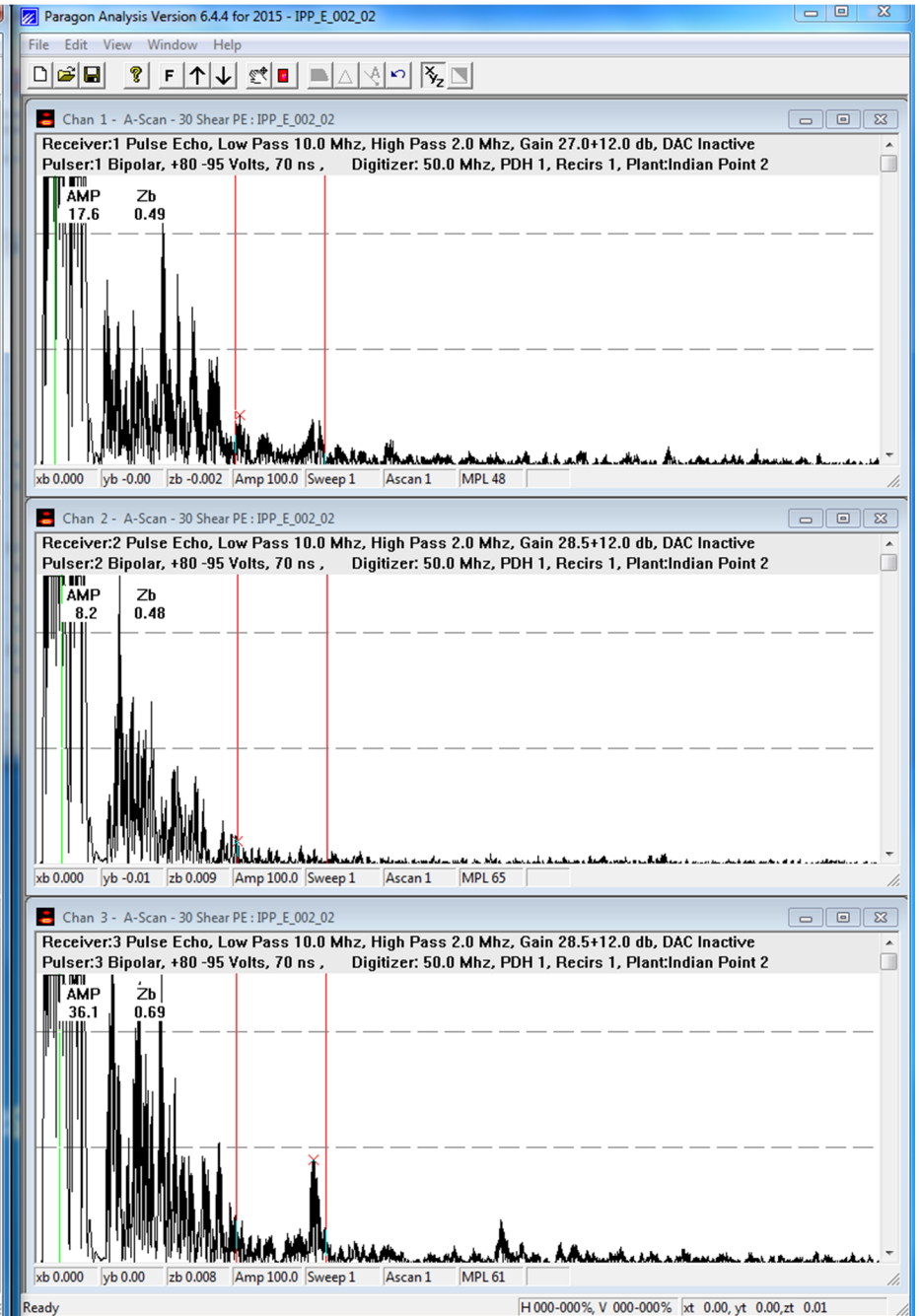


Bolt A-012

BOLT E-002, CHANNELS 1-3

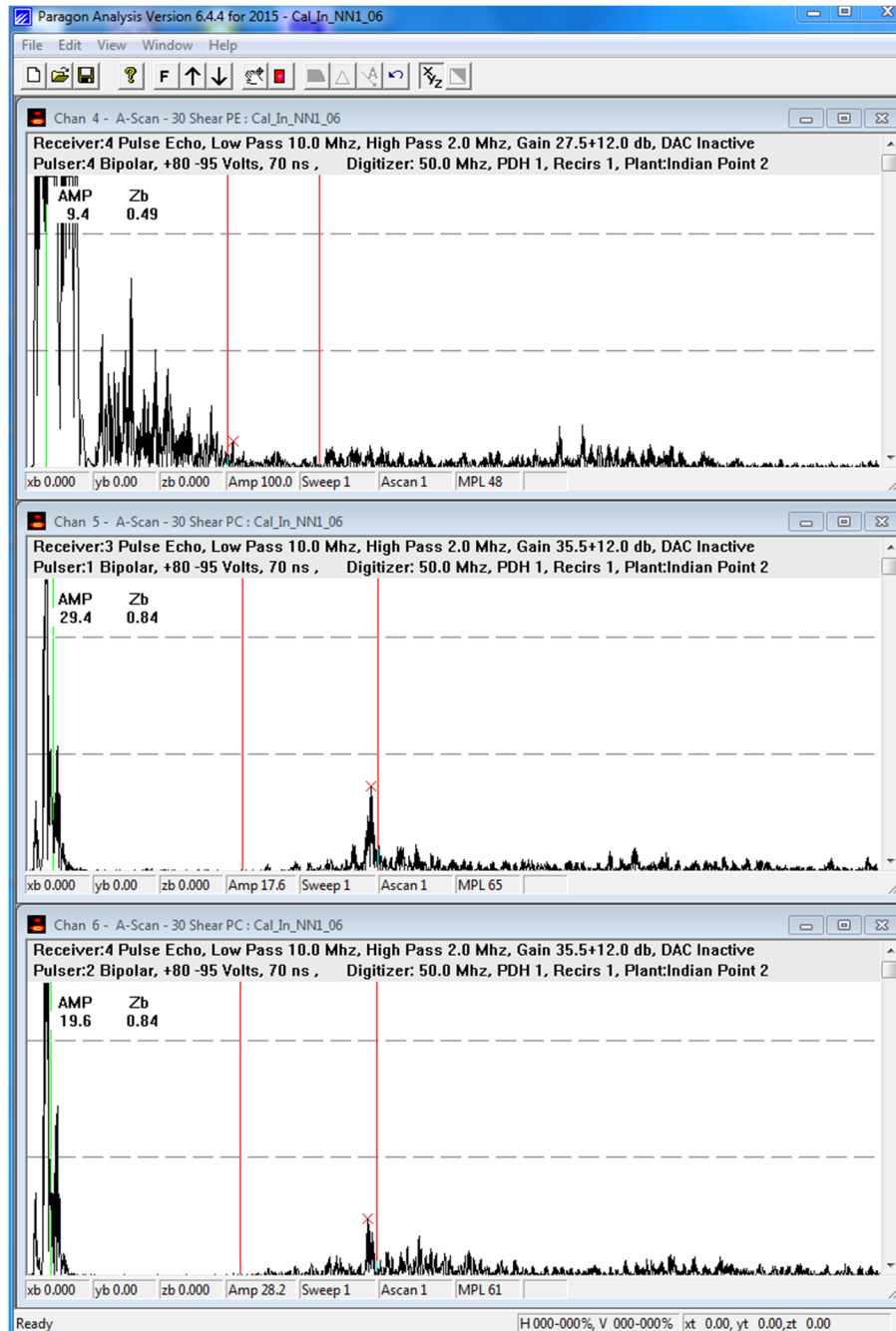


Calibration Bolt NN1

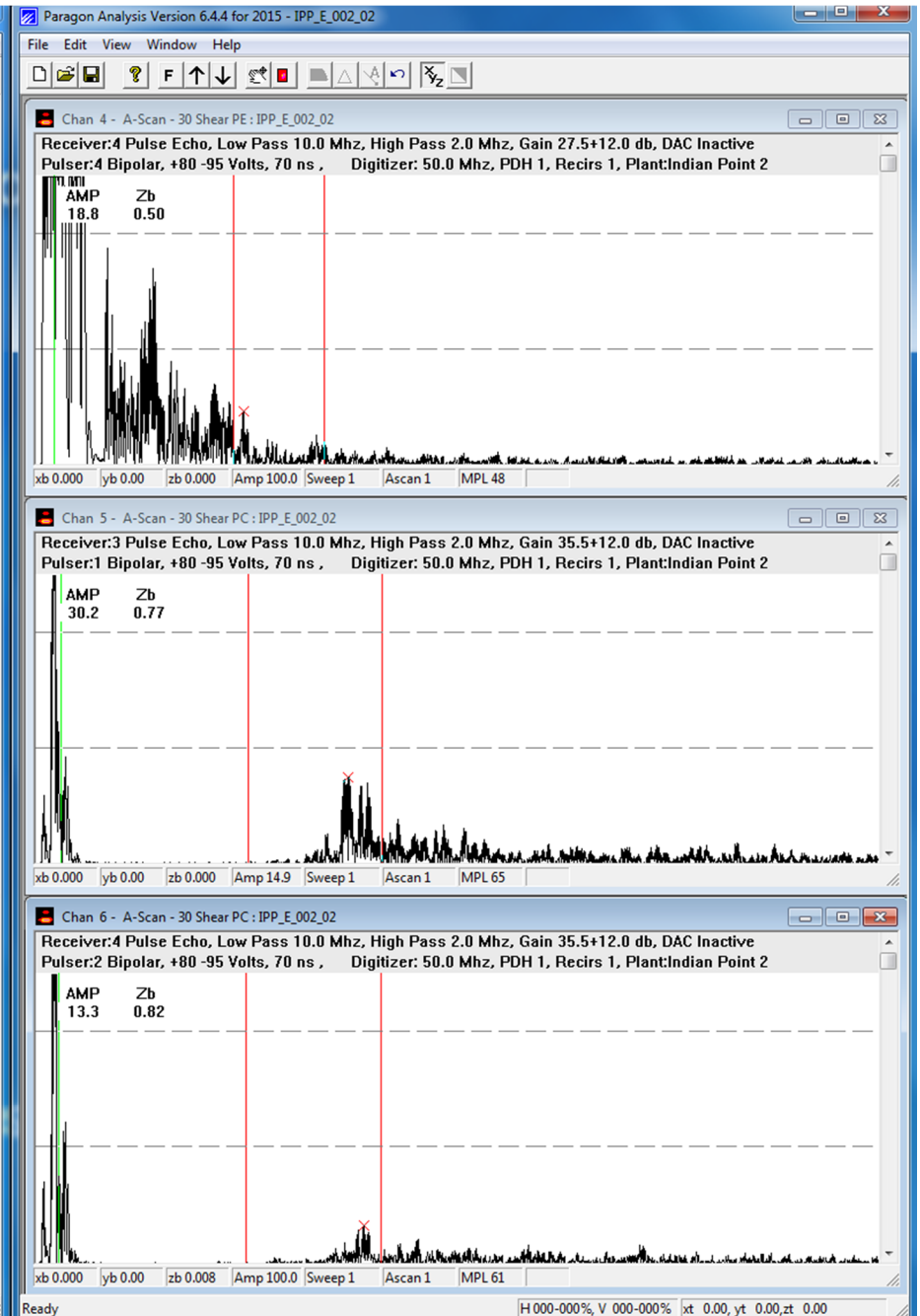


Bolt E-002

BOLT E-002, CHANNELS 4-6



Calibration Bolt NN1



Bolt E-002

BOLT E-002, CHANNELS 7-10

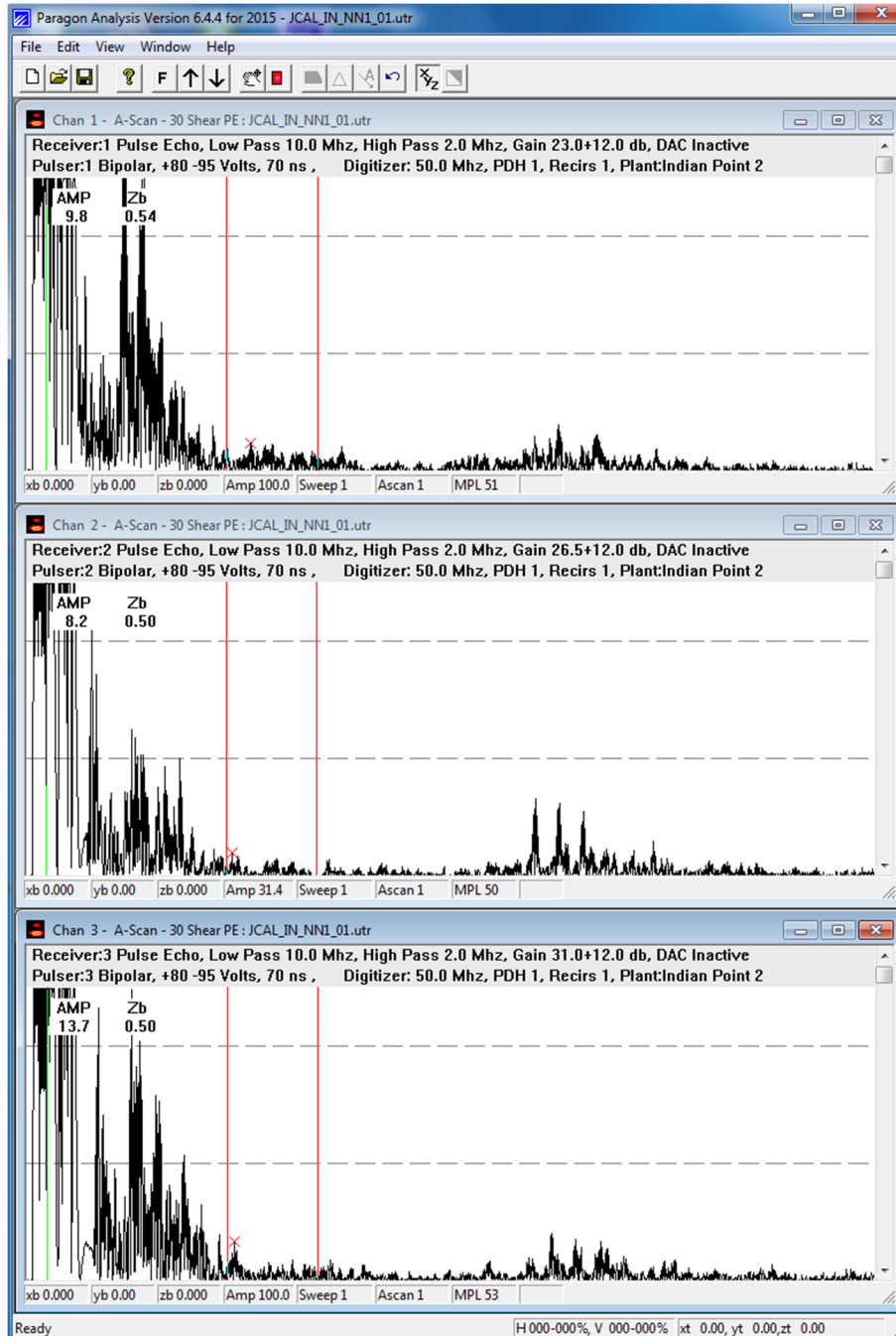


Calibration Bolt NN1

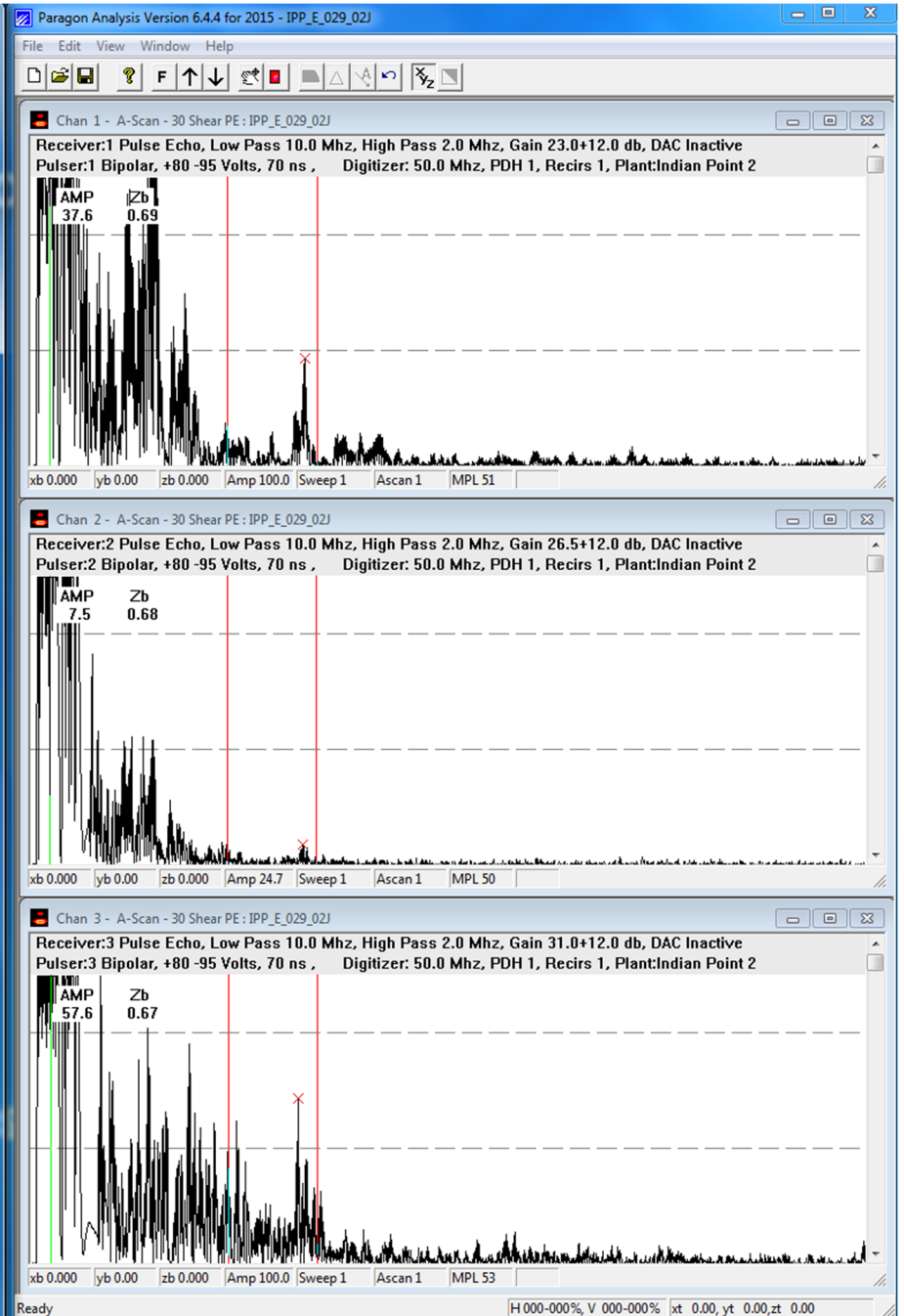


Bolt E-002

BOLT E-29, CHANNELS 1-3

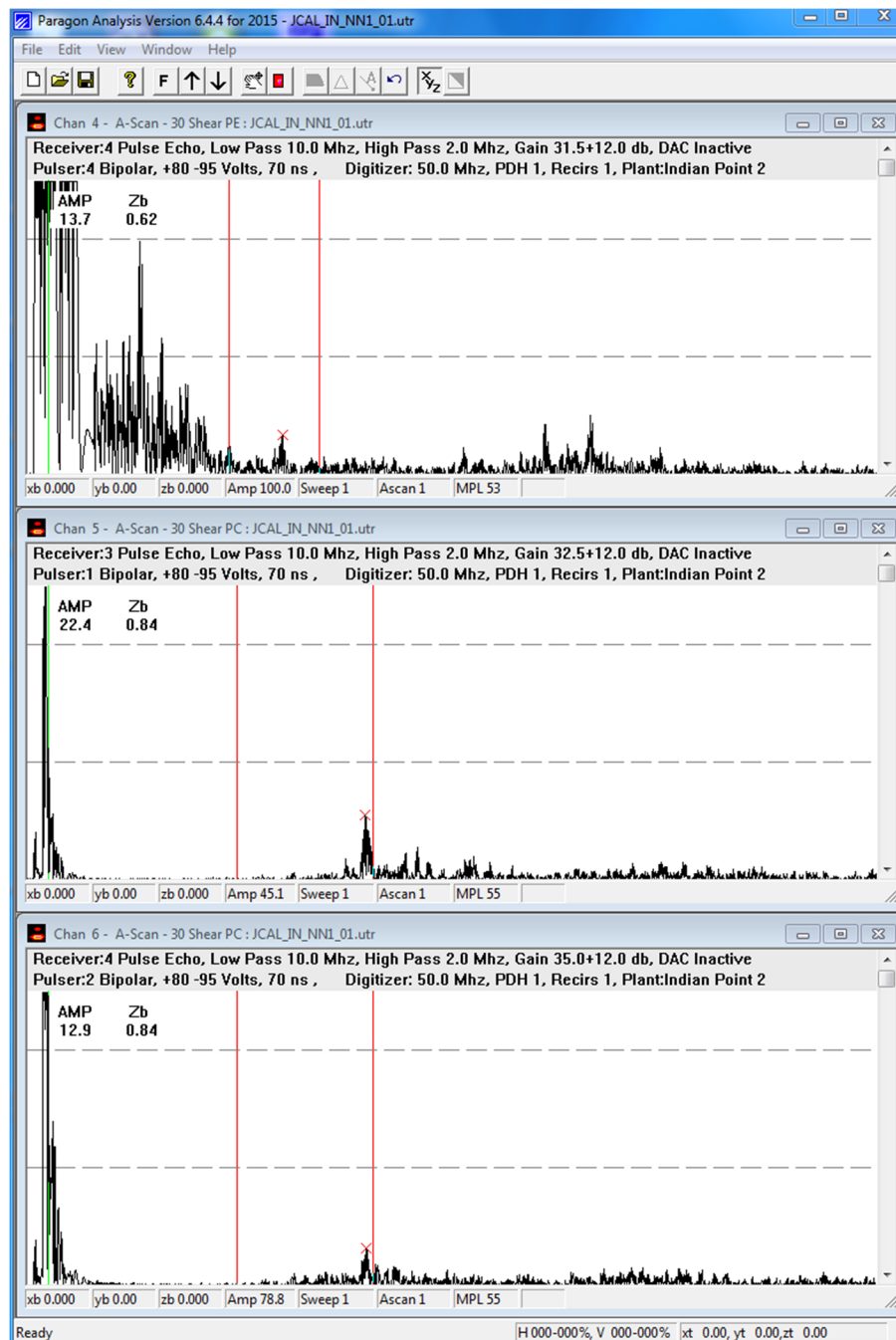


Calibration Bolt NN1

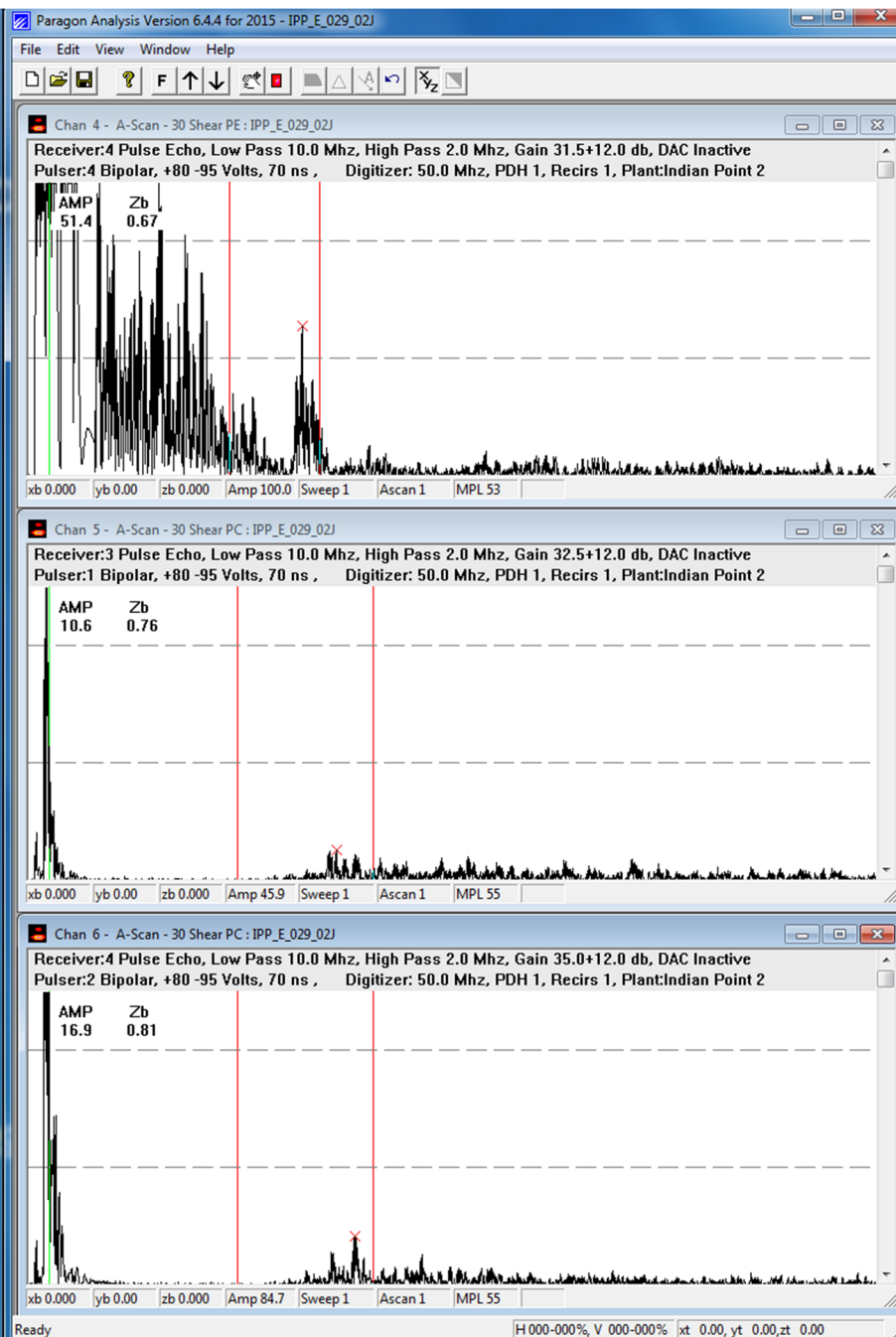


Bolt E-029

BOLT E-029, CHANNELS 4-6

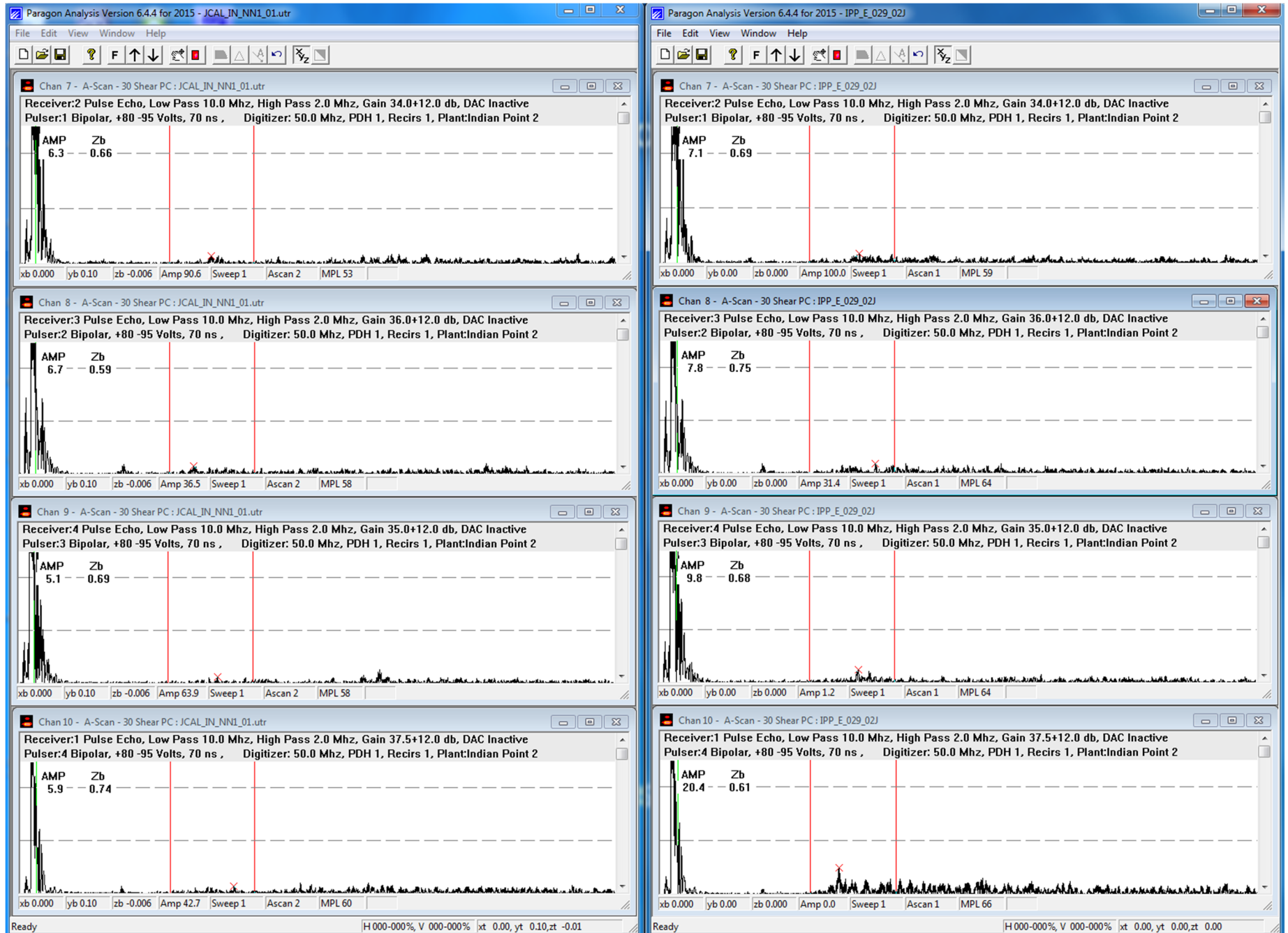


Calibration Bolt NN1



Bolt E-029

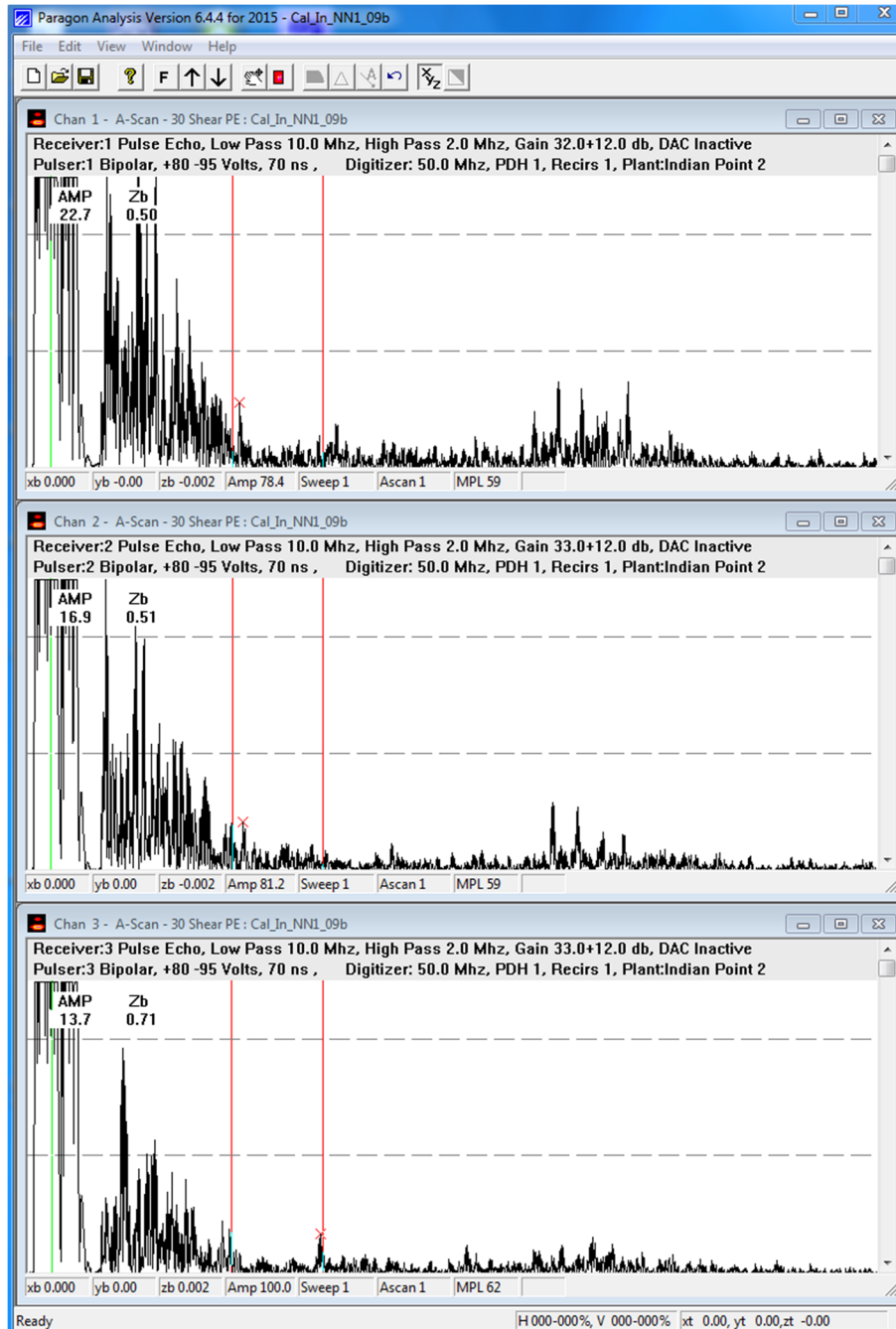
BOLT E-029, CHANNELS 7-10



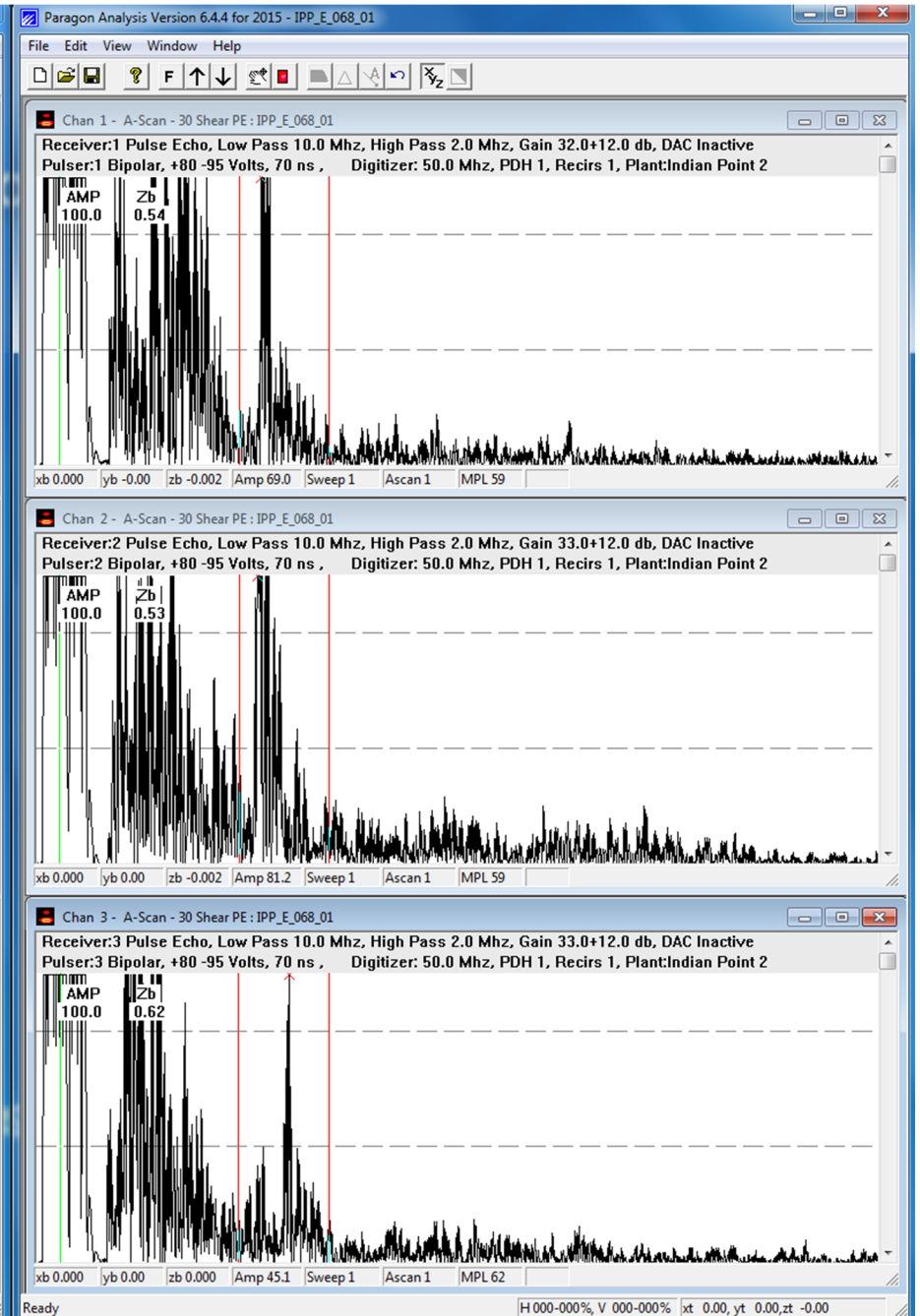
Calibration Bolt NN1

Bolt E-029

BOLT E-068, CHANNELS 1-3

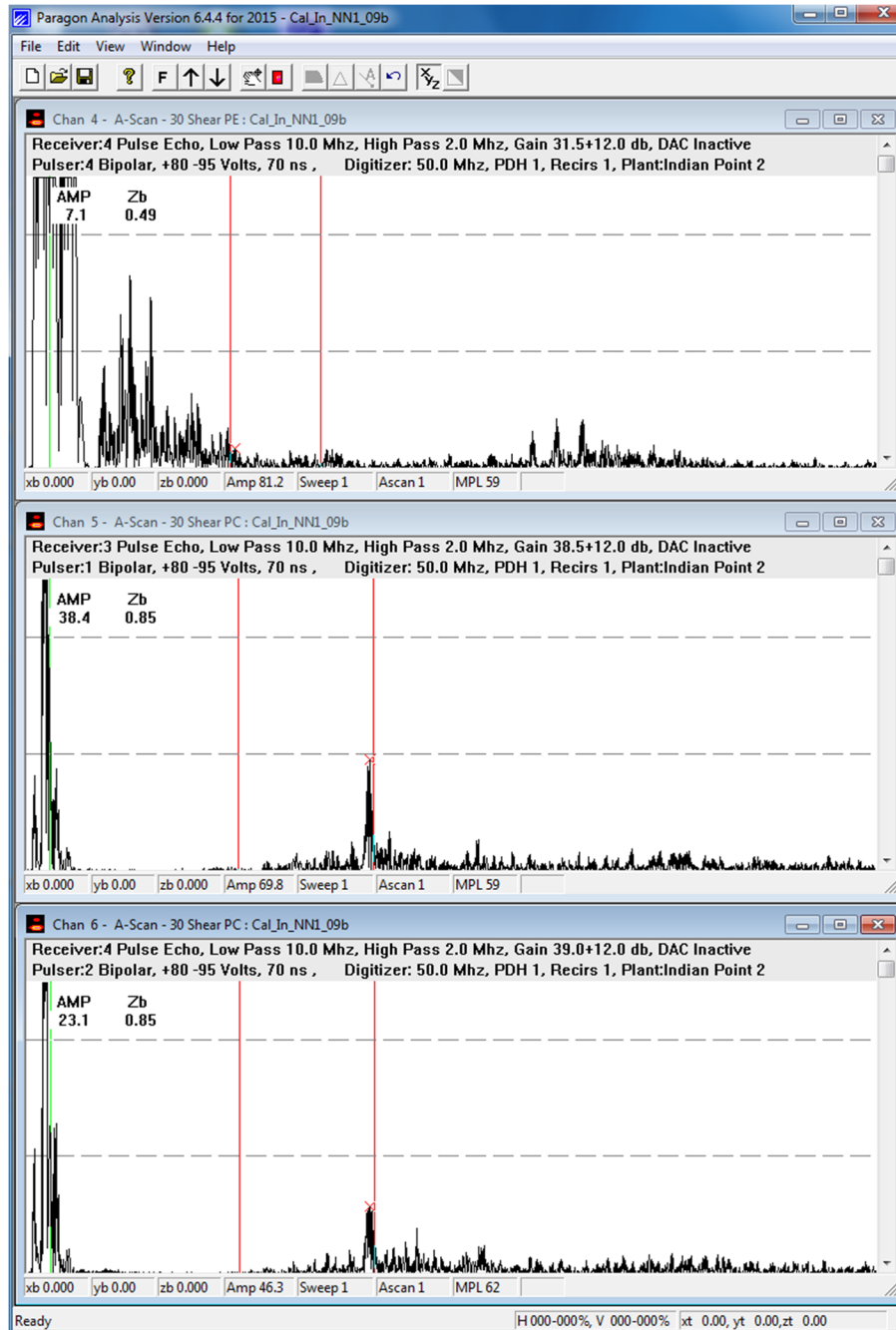


Calibration Bolt NN1

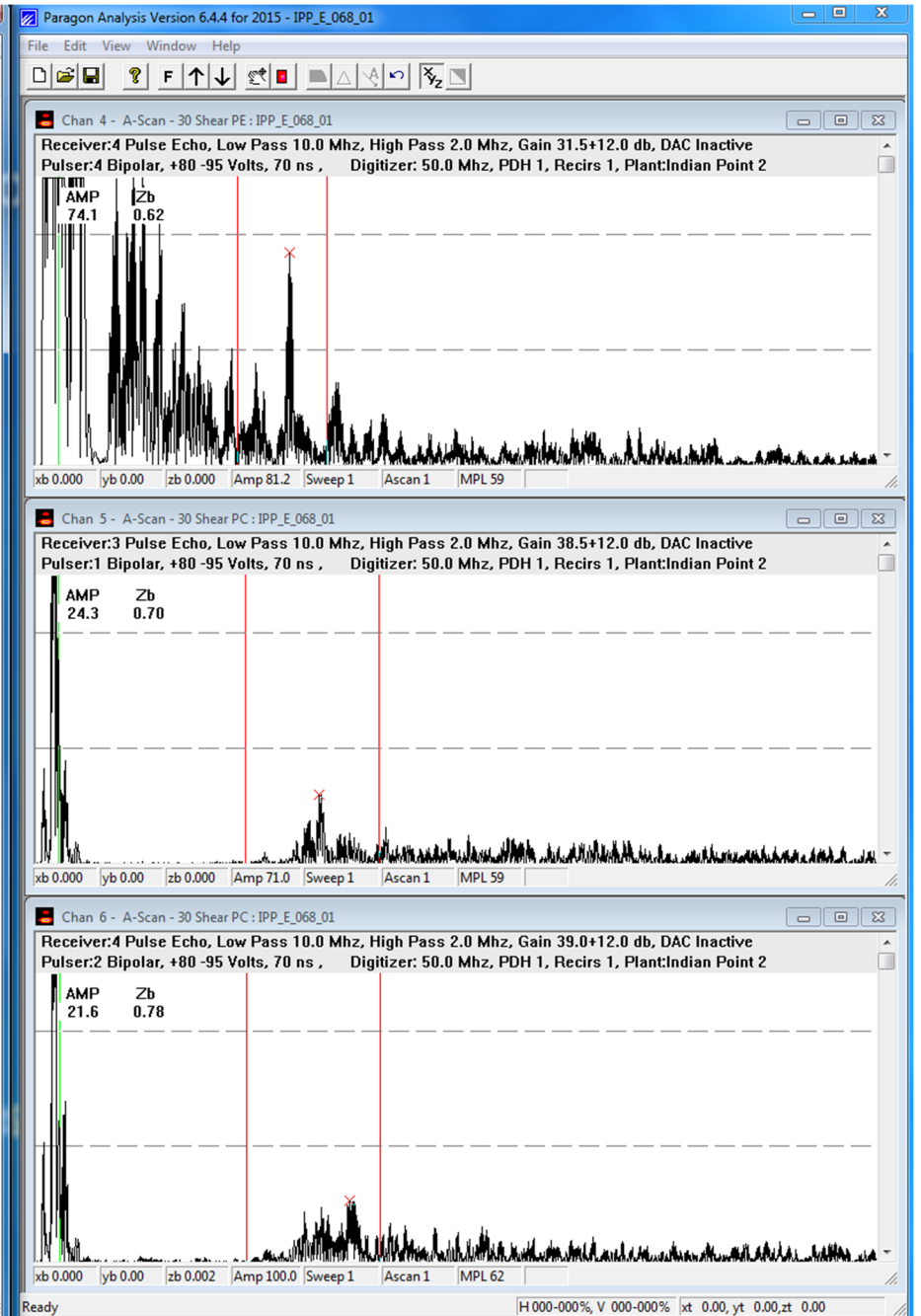


Bolt E-068

BOLT E-068, CHANNELS 4-6

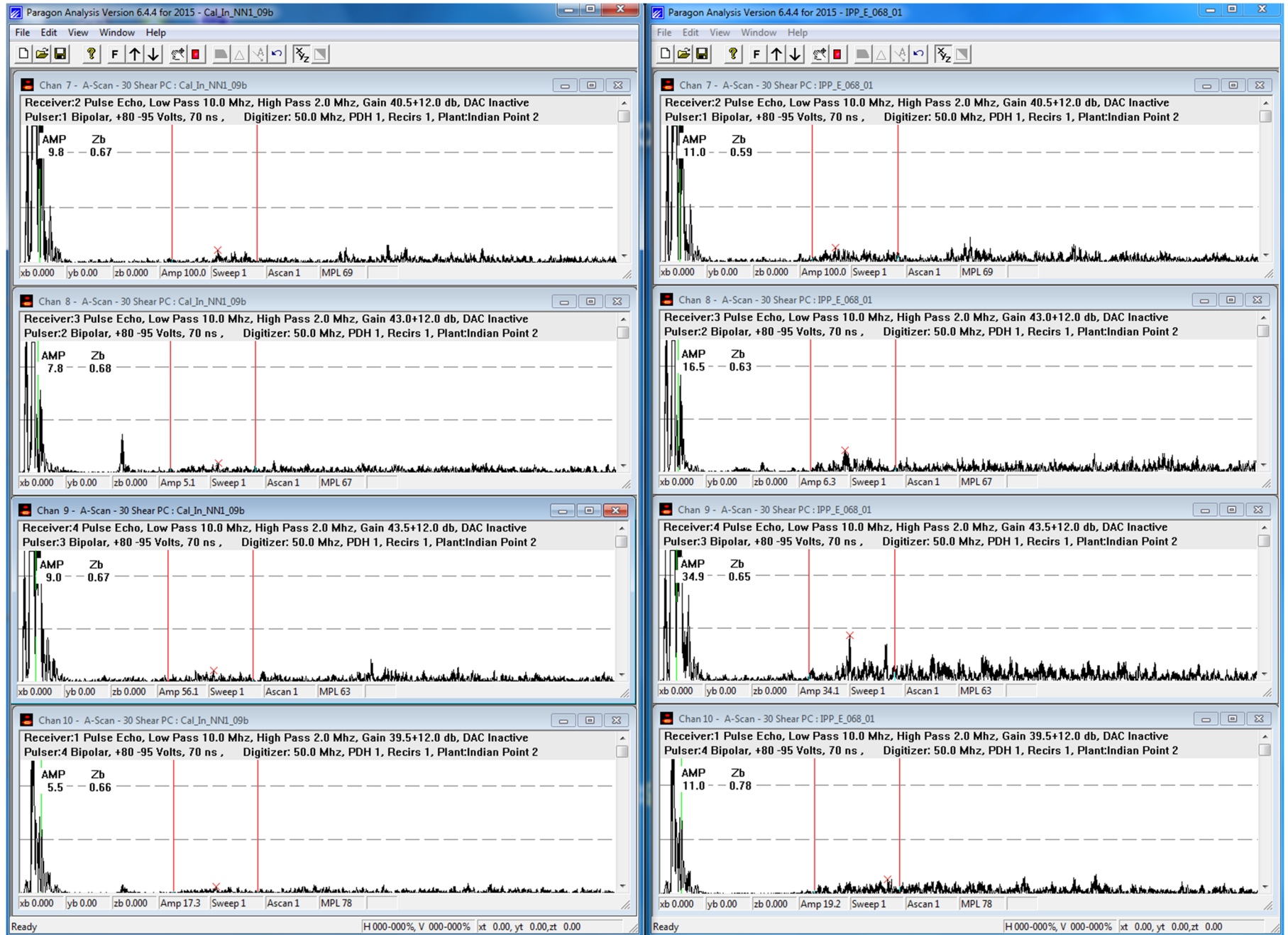


Calibration Bolt NN1



Bolt E-068

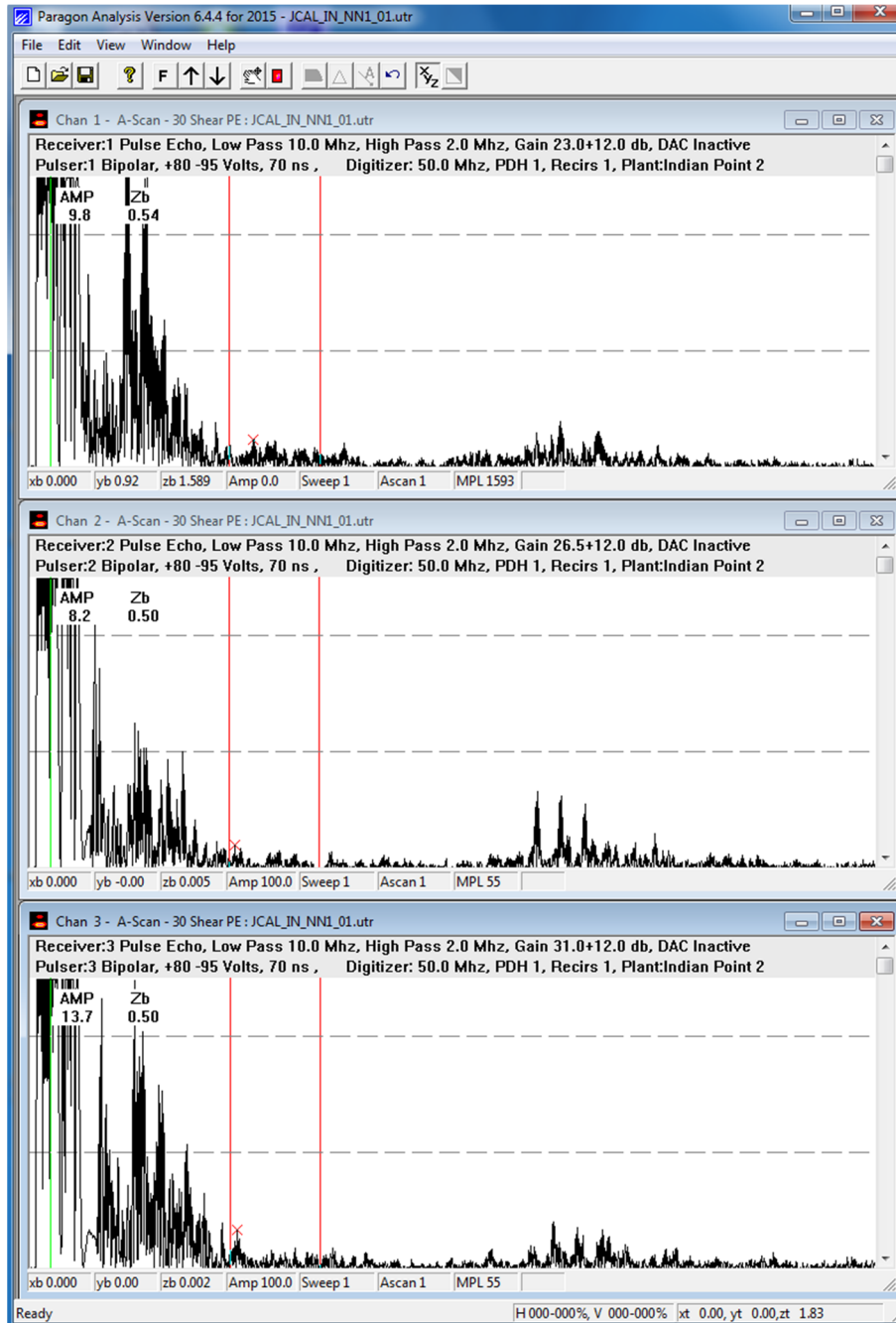
BOLT E-068, CHANNELS 7-10



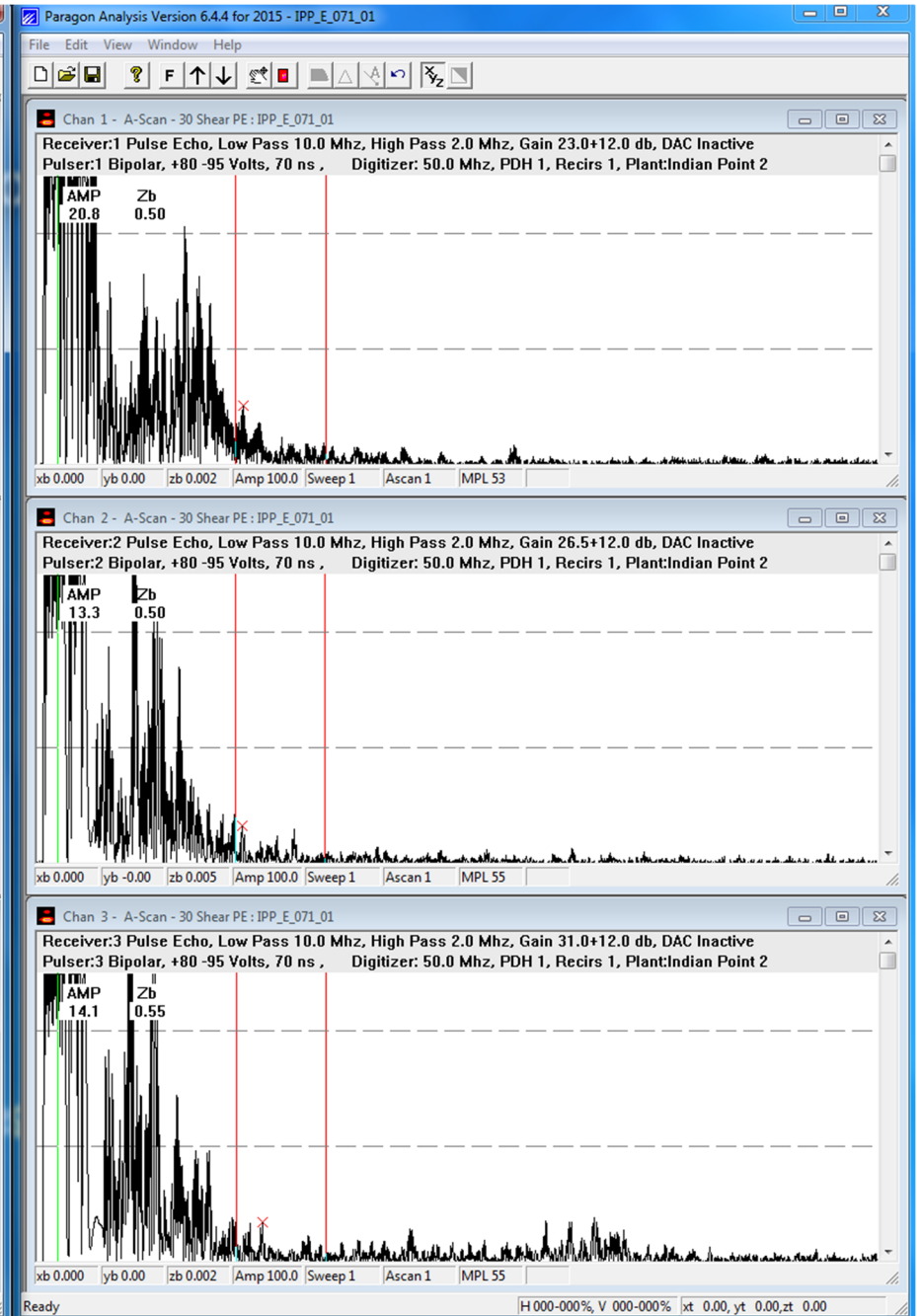
Calibration Bolt NN1

Bolt E-068

BOLT E-071, CHANNELS 1-3

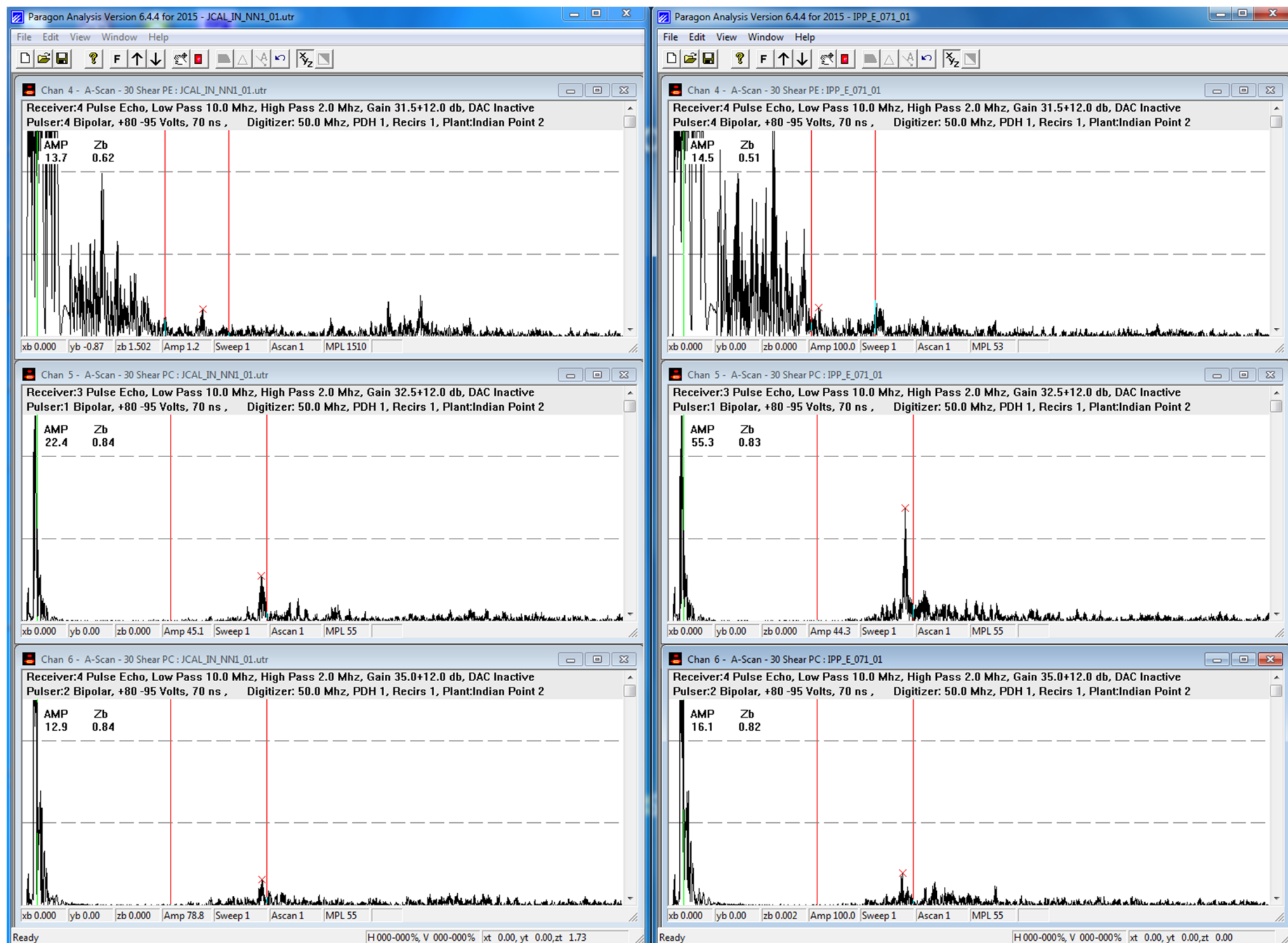


Calibration Bolt NN1



Bolt E-071

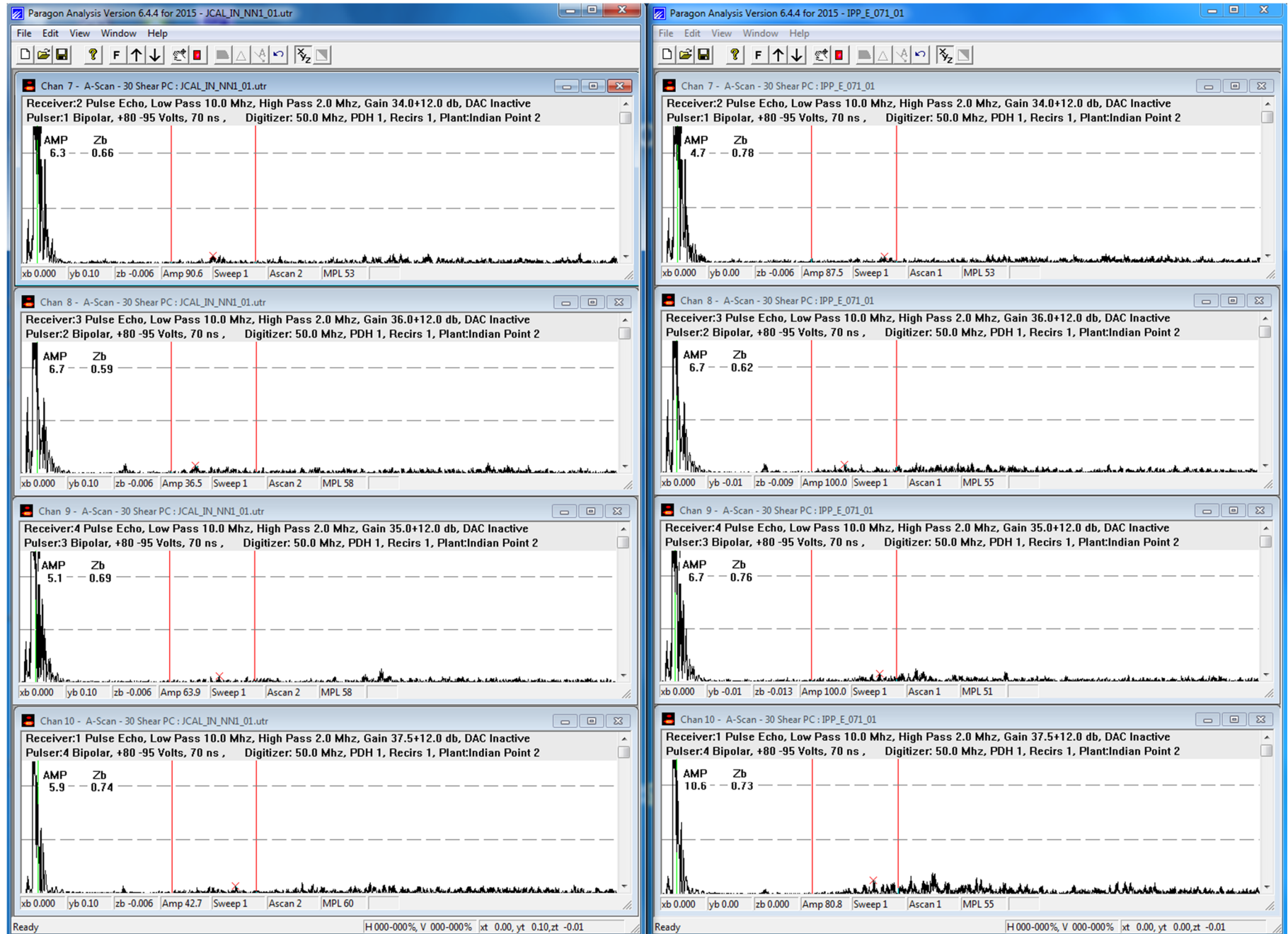
BOLT E-071, CHANNELS 4-6



Calibration Bolt NN1

Bolt E-071

BOLT E-071, CHANNELS 7-10



Calibration Bolt NN1

Bolt E-071