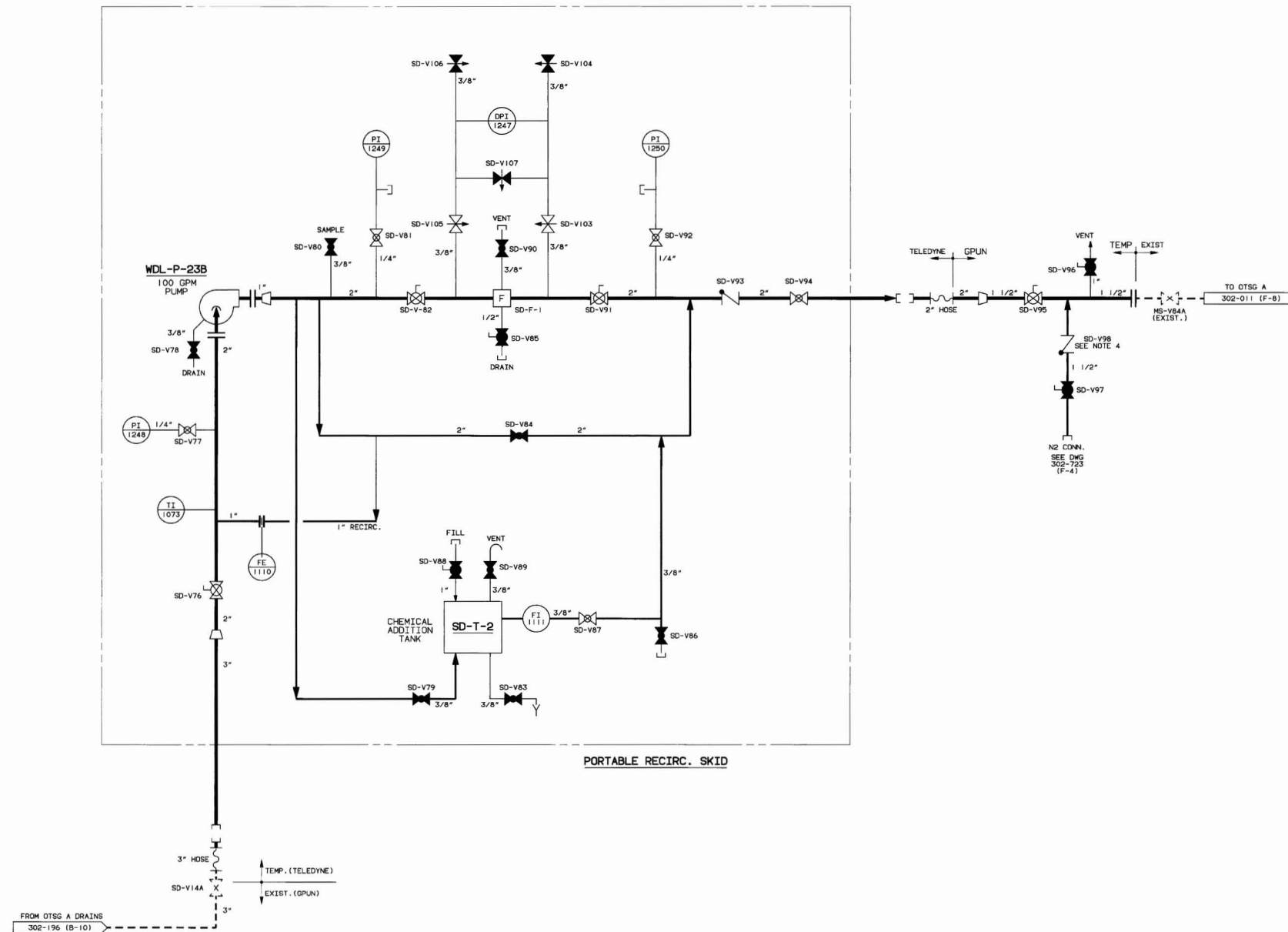


REVISIONS		
REV.	ZONE	DESCRIPTION
2	N/A	ADMINISTRATIVE CHANGE TO IMPLEMENT ADDITIONS, ENHANCEMENTS AND CORRECTIONS DUE TO RECHECKING OF DWGS FROM MANUAL TO CAD FORMAT



#### NOTES

1. VALVE POSITIONS SHOWN FOR REFERENCE ONLY. ACTUAL POSITIONS CONTROLLED BY PROCEDURES.
2. ALL INSTRUMENT TAG NUMBERS ARE PREFIXED BY SYSTEM DESIGNATOR UNLESS OTHERWISE NOTED.
3. THE PORTABLE RECIRC. SKID SHALL BE ISOLATED AND REMOVED FROM SERVICE PRIOR TO PLANT START-UP INCLUDING CONNECTION POINTS TO EXISTING PLANT.
4. THE INTERNALS OF VALVE SD-V98 ARE REMOVED TO ALLOW THE NITROGEN MANIFOLD, ATTACHED THROUGH SD-V97 TO BE USED FOR MONITORING "A" OTSG SHELL SIDE PRESSURE.

CAD FILE: VIE,566,21,1000,001-.0201  
THIS IS A COMPUTER GENERATED DWG. DO NOT REVISE IT MANUALLY

3 302-003 COMPONENT & SYS ID INDEX		ENGINEER DATE		TMI UNIT 1		DWG. NO. 302-718		SH. 2	
2 302-002 SYMBOLS INSTRUMENTATION		MANAGER APPROVAL DATE		SCALE: NONE		BA		TASK	
1 302-001 SYMBOLS FLOW DIAGRAM		NO. DWG. NO.		TITLE		REFERENCES			

HRTZKO 03/20/93		GAI Nuclear / GAI	
DATE	DATE	OTSG SECONDARY SIDE	
3-26-93	3-26-93	FLOW DIAGRAM	
CHECKED	DATE	PORTABLE RECIRC SYSTEM	
DATE	DATE		
DESIGN LEADER	DATE		