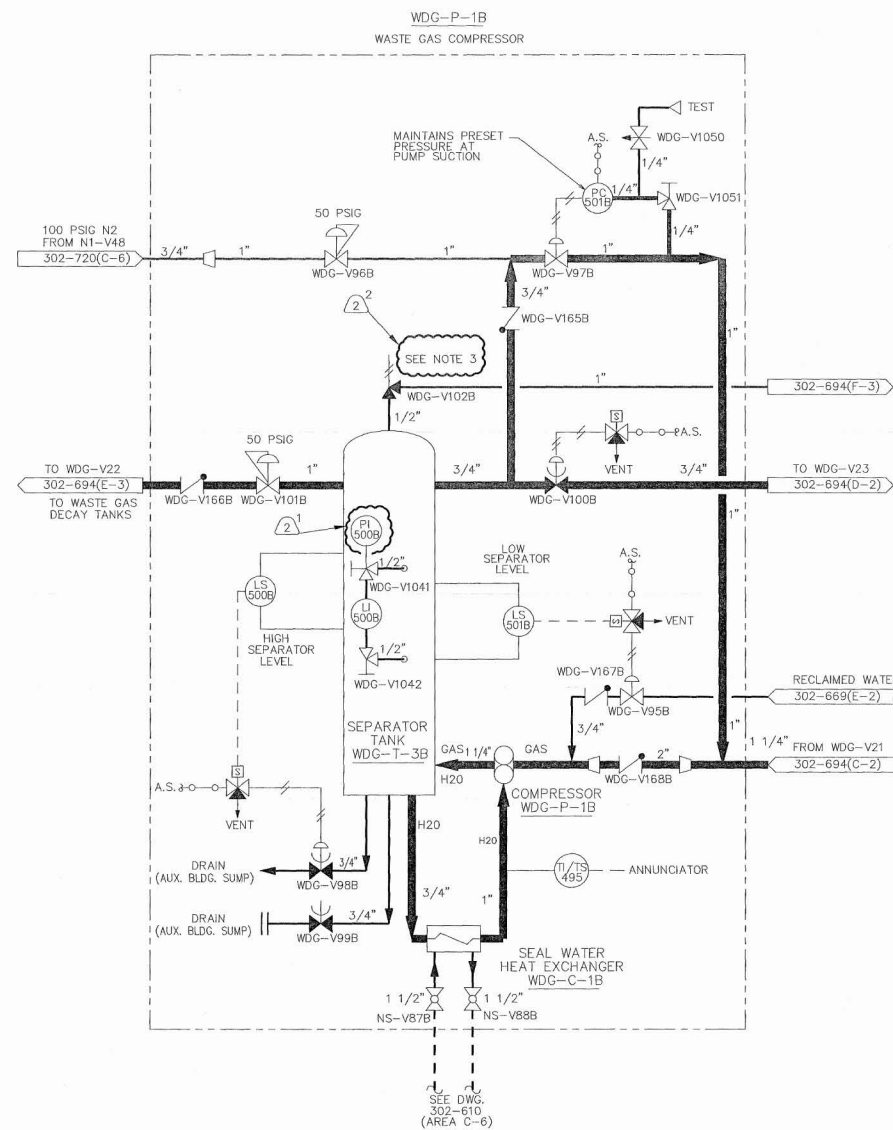
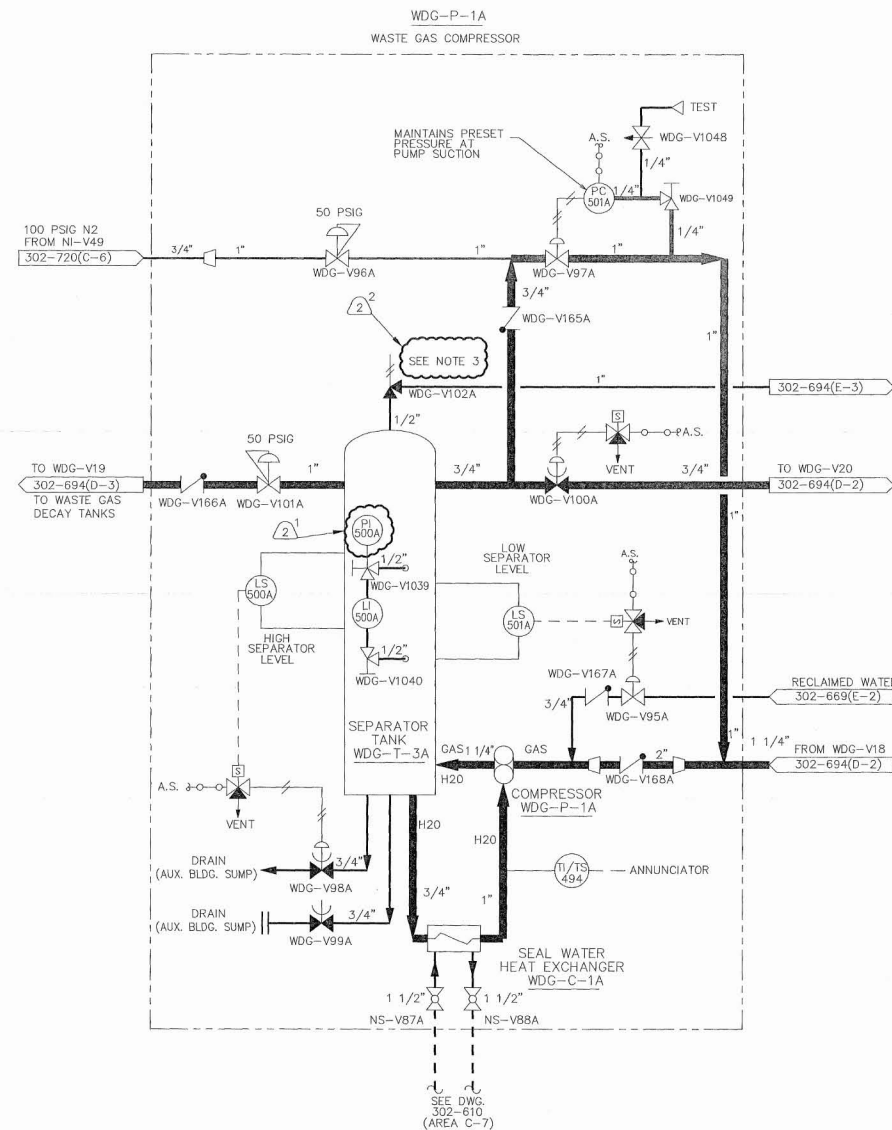


REVISIONS		
REV	ZONE	DESCRIPTION
2	VARIES	REVISED TO (1) INCORPORATE ECR-03-00591 REV. 0 AND (2) TO INCORPORATE AN ADMINISTRATIVE REVISION.



- NOTES
1. VALVE POSITIONS SHOWN FOR REFERENCE ONLY. ACTUAL POSITIONS CONTROLLED BY PROCEDURES.
  2. ALL INSTRUMENT TAG NUMBERS ARE PREFIXED BY SYSTEM DESIGNATOR UNLESS OTHERWISE NOTED.
  3. SET POINT VALUES FOR RELIEF VALVES TO BE FOUND IN THE APPLICABLE ENGINEERING SET POINT DATA BASE.
  4. ENTIRE COMPONENT IS N-3, S-II.
  5. ALL DRAINS AFTER LAST VALVE SHALL BE S-III NON-NUCLEAR.

NO.	DWG. NO.	TITLE
3	302-003	COMPONENT & SYS ID INDEX
2	302-002	SYMBOLS INSTRUMENTATION
1	302-001	SYMBOLS FLOW DIAGRAM

THIS IS A COMPUTER GENERATED DRAWING DO NOT REVISE IT MANUALLY		<b>AmerGen</b> <b>WASTE GAS COMPRESSORS</b> <b>FLOW DIAGRAM</b>	
MARK TETKOSKIE 03/15/06 3/16/06 3/16/06	DATE DATE DATE	DWG. NO. <b>302-696</b>	SHEET <b>N/A</b>
INTERFACING CONCURRENCE		SCALE NONE	REV. <b>2</b>