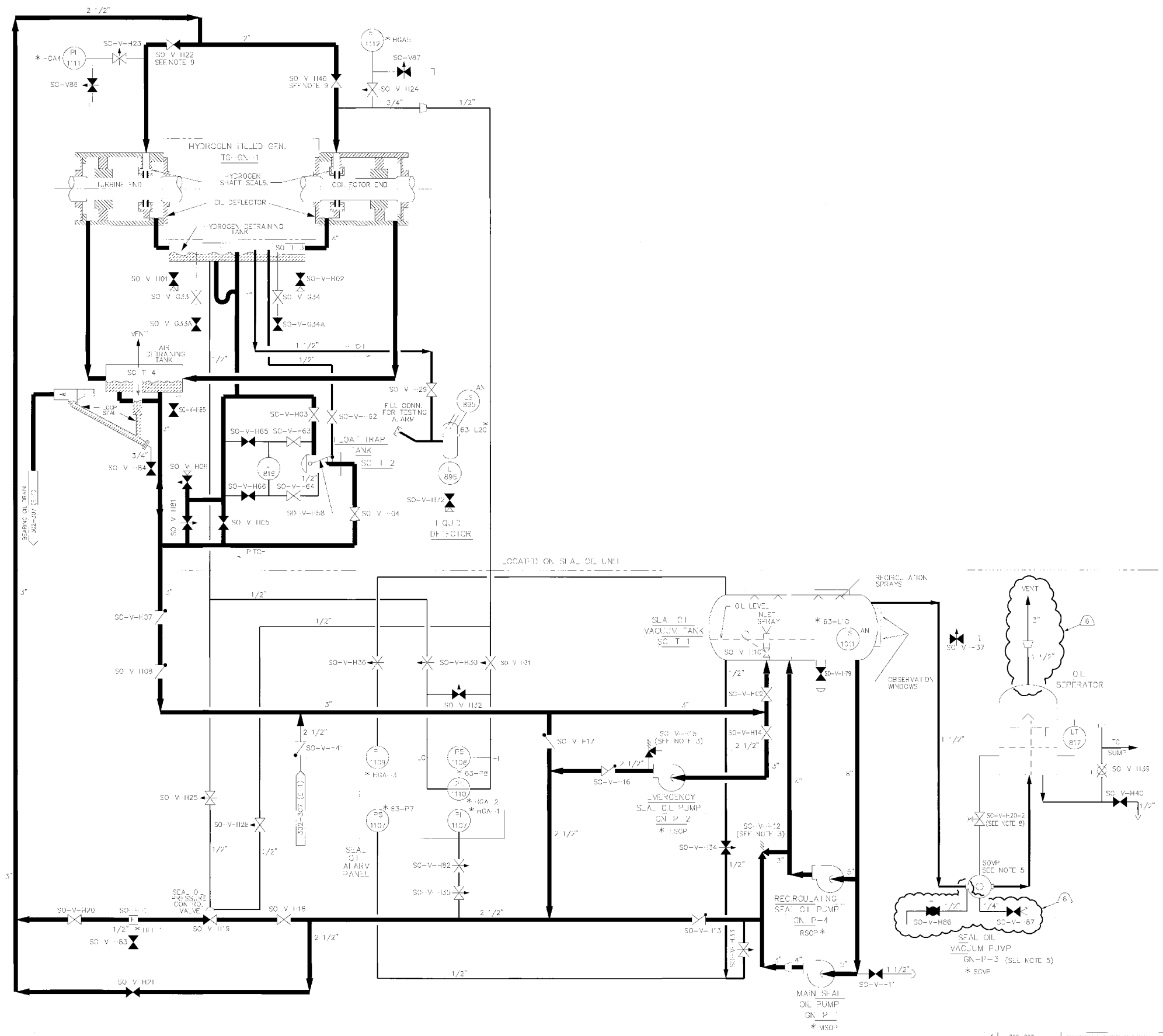


REV	DATE	DESCRIPTION
6	N/A	REVISED TO ADD SPECIAL TORQUE TO 30300 INLV. Q



- NOTES:
1. VALVE POSITIONS SHOWN FOR REFERENCE ONLY. ACTUAL POSITIONS GOVERNED BY PNEUMONICS.
 2. ALL INSTRUMENT TAG NUMBERS ARE PRELIMINARY BY SYSTEM DESIGNER UNLESS OTHERWISE NOTED.
 3. SET POINT VALUES FOR RELIEF VALVES TO BE FOUND IN THE APPLICABLE ENGINEERING SET POINT DATA BASE.
 4. SEE U.S. NAVY 9400100 FOR INSURANCE SET POINTS AND OPERATING INSTRUCTIONS.
 5. VACUUM PUMP (GN-P-3) CASING TO BE BE DRAINED PRIOR TO STARTING.
 6. * INDICATES G.E. ASSIGNED INSTRUMENT OR EQUIPMENT NUMBERS.
 7. A. VALVE NUMBERS DESIGNATED SO-V-H00 ARE G.E. ASSIGNED. B. VALVE NUMBERS ASSIGNED BY OTHER THAN G.E. TO BE DESIGNATED SO-V-C0.
 8. SO-V-H20 2 OPENS TO PROVIDE LUBRICATION WHEN MOTOR ENGAGED.
 9. SO-V-H22,46 DISCS ARE DRILLED TO PREVENT TIGHT SHUT OFF AND SEALING SEALS.

Code File Name: 302303_06

THIS IS A COMPUTER GENERATED DRAWING DO NOT REVISE IT MANUALLY

DATE: 08/25/13
BY: [Signature]
CHECKED: 08/29/13
DATE: 08/29/13

REVISIONS:
1. 302-001
2. 302-002
3. 302-003

SYMBOLS & SYSTEM INDEX
SYMBOLS INSTRUMENTATION
SYMBOLS INSTRUMENTATION
SYMBOLS INSTRUMENTATION

INTERFACING CONFORMANCE

Exelon
Nuclear

**SHAFT SEALING SYSTEM
FLOW DIAGRAM**

302-303

6