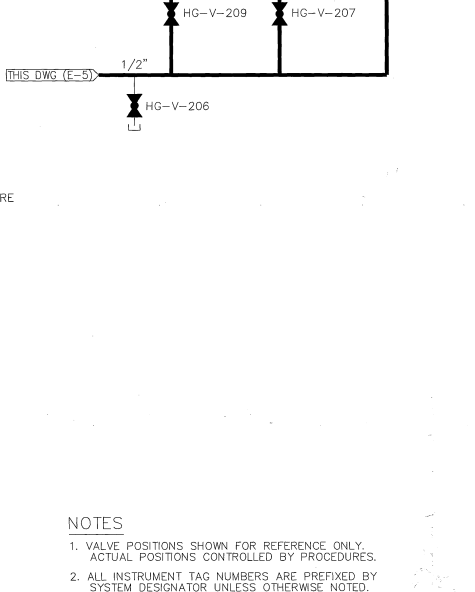
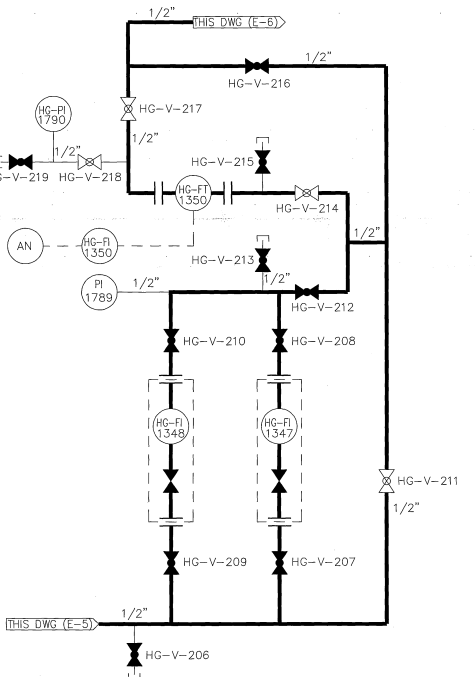


REV		ZONE	DESCRIPTION
24	VARIES		REVISED TO (1) INCORPORATE ECR-13-00410 REV. 0 AND (2) TO INCORPORATE AN ADMINISTRATIVE CHANGE BY ADDING LINE SIZES.



- NOTES**
1. VALVE POSITIONS SHOWN FOR REFERENCE ONLY. ACTUAL POSITIONS CONTROLLED BY PROCEDURES.
 2. ALL INSTRUMENT TAG NUMBERS ARE PREFIXED BY SYSTEM DESIGNATOR UNLESS OTHERWISE NOTED.
 3. SET POINT VALUES FOR RELIEF VALVES TO BE FOUND IN THE APPLICABLE ENGINEERING SET POINT DATA BASE.
 4. * = G.E. ASSIGNED INSTRUMENTATION DESIGNATION.
 5. FOR PIPING BY AIR PRODUCTS INC. SEE THEIR DWG. #69-372D.
 6. FOR PIPING BY G.E. SEE THEIR DWG. #943 D 894.
 - 7.(a) VALVE NUMBERS DESIGNATED AS HG-V-Gxxx, OR SO-V-Gxxx ARE G.E. ASSIGNED NUMBERS.
(b) VALVE NUMBERS ASSIGNED BY OTHER THAN G.E. TO BE DESIGNATED AS HG-V-xxx, PG-V-xxx, OR SO-V-xxx.

Cod File Name :302301_R24

THIS IS A COMPUTER GENERATED DRAWING DO NOT RE-USE IT MANUALLY

Exelon
Nuclear

**GENERATOR GAS & VENTS
FLOW DIAGRAM**
PIPING

MARK TETKOSKIE 01/27/14
DATE
Curtis Vance 01/29/14
DATE

REVISIONS
3 302-003 COMPONENT & SYS ID INDEX
2 302-002 SYMBOLS INSTRUMENTATION
1 302-001 SYMBOLS FLOW DIAGRAM

NO. DWG. NO. REFERENCES

3 302-003 COMPONENT & SYS ID INDEX
2 302-002 SYMBOLS INSTRUMENTATION
1 302-001 SYMBOLS FLOW DIAGRAM

INTERFACING CONCURRENCE

DATE

DWG. NO. 302-301

SHEET 24