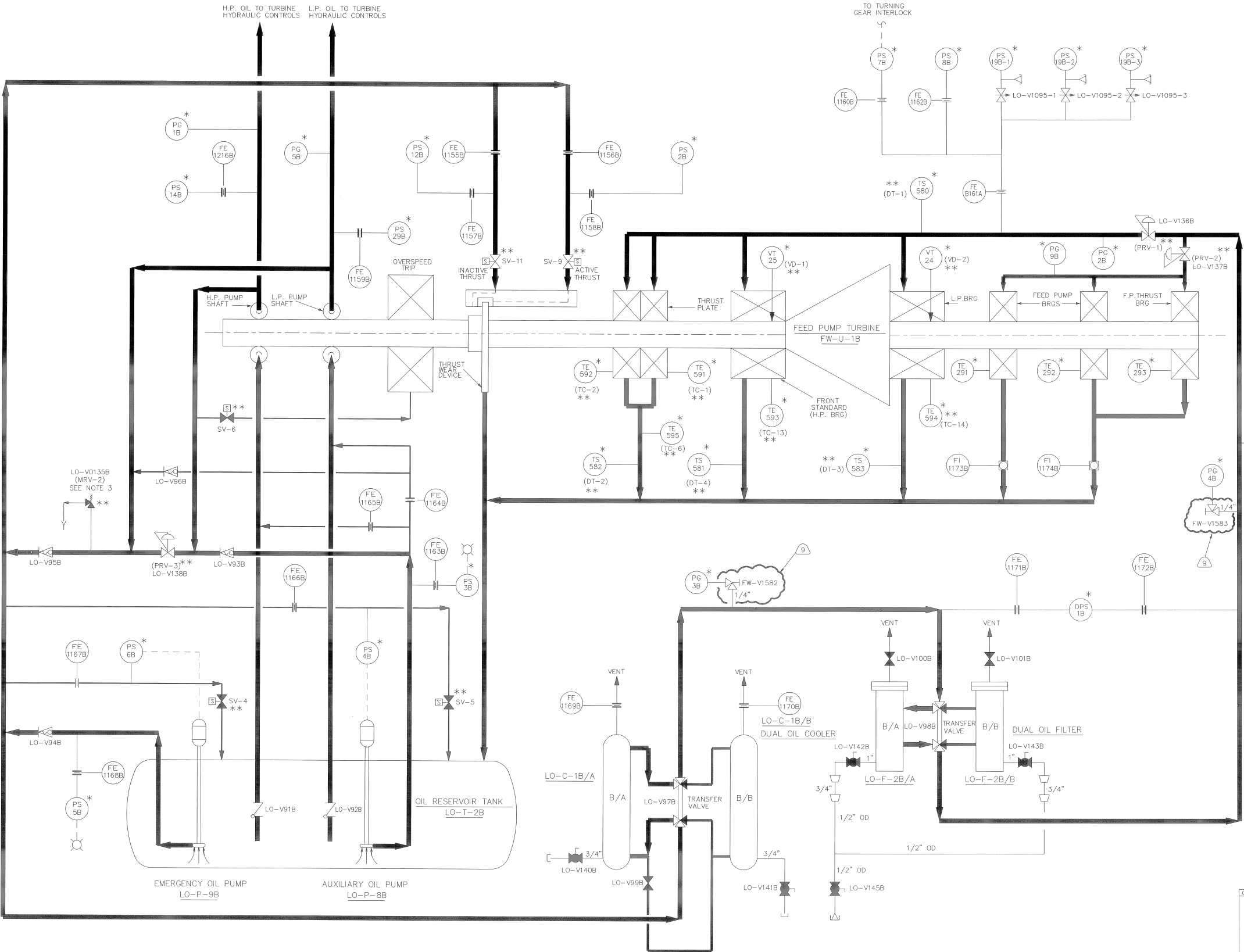


| REVISIONS |      |  |
|-----------|------|--|
| REV       | ZONE | DESCRIPTION                                |
| 9         | D-25 | REVISED TO INCORPORATE ECR-08-01023 REV. 0 |



- NOTES
1. VALVE POSITIONS SHOWN FOR REFERENCE ONLY. ACTUAL POSITIONS CONTROLLED BY PROCEDURES.
  2. ALL INSTRUMENT TAG NUMBERS ARE PREFIXED BY SYSTEM DESIGNATOR UNLESS OTHERWISE NOTED.
  3. SET POINT VALUES FOR RELIEF VALVES TO BE FOUND IN THE APPLICABLE ENGINEERING SET POINT DATABASE.
  4. ALL ITEMS MARKED WITH AN (\*\*) DENOTE THE ITEM IS DESIGNATED IN THE CREL AS "FW" SYSTEM. OTHER DEVICES ARE DESIGNATED AS "LO" SYSTEM.
  5. (\*\*) DESIGNATES GE ASSIGNED NUMBERS.

| 3          | 302-003  | COMPONENT & SYS ID INDEX |
|------------|----------|--------------------------|
| 2          | 302-002  | SYMBOLS INSTRUMENTATION  |
| 1          | 302-001  | SYMBOLS FLOW DIAGRAM     |
| NO.        | DWG. NO. | TITLE                    |
| REFERENCES |          |                          |

|   |  |
|---|--|
| Cod File Name : 302280_52_R9  |  |
| THIS IS A COMPUTER GENERATED DRAWING DO NOT REVISE IT MANUALLY  |  |
| DRAWN: MARK TETKOSKIE<br>CHECKED: <i>[Signature]</i><br>DESIGNED: <i>[Signature]</i>                      | DATE: 10/12/10<br>DATE: 10/12/10<br>DATE: 10/13/10 |
| <b>Exelon</b><br>Nuclear<br><b>DRIVE TURBINE LUBE OIL</b><br><b>FEED PUMP TURBINE "B"</b><br>FLOW DIAGRAM |  |
| DWG. NO. <b>302-280</b><br>SCALE: NONE  | SH. <b>2</b><br>REV. <b>9</b>                      |