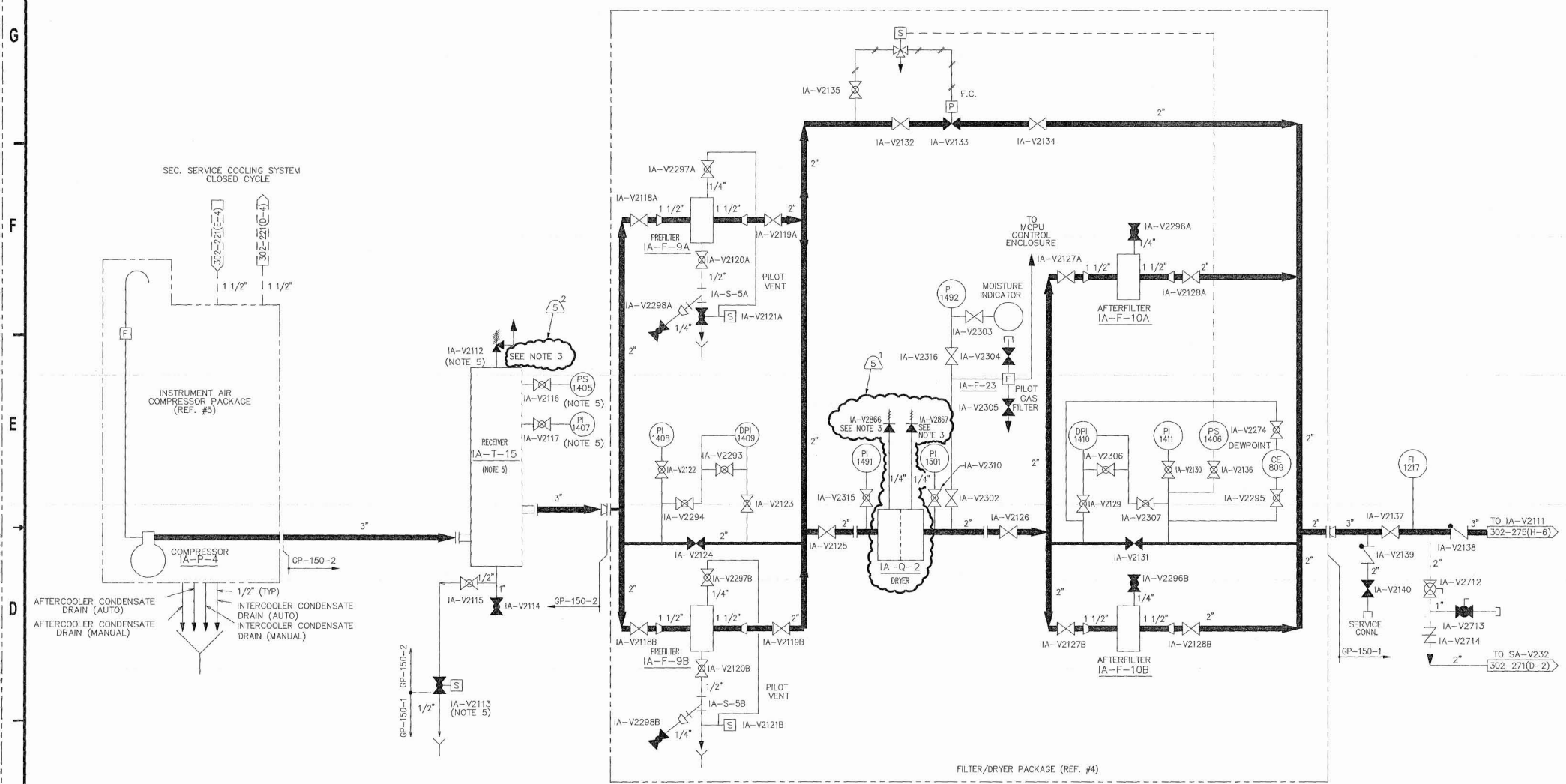


REVISIONS		
REV	ZONE	DESCRIPTION
5	VARIABLES	REVISED TO (1) INCORPORATE ECR-05-00471 REV. 0 AND (2) TO INCORPORATE AN ADMINISTRATIVE REVISION.



- NOTES:**
1. VALVE POSITIONS SHOWN FOR REFERENCE ONLY. ACTUAL POSITIONS CONTROLLED BY PROCEDURES.
 2. ALL INSTRUMENT TAG NUMBERS ARE PREFIXED BY SYSTEM DESIGNATOR UNLESS OTHERWISE NOTED.
 3. SET POINT VALUES FOR RELIEF VALVES TO BE FOUND IN THE APPLICABLE ENGINEERING SET POINT DATA BASE.
 4. ALL PIPING AND EQUIPMENT ON THIS DWG IS SEISMIC CLASS III.
 5. ITEMS NOTED ARE SUPPLIED WITH RECEIVER.

5	1310739431	ATLAS COPCO COMTEC INC
4	32000-37901	PNEUMATIC PRODUCTS CORP
3	302-003	COMPONENT & SYS ID INDEX
2	302-002	INSTRUMENTATION SYMBOLS
1	302-001	SYMBOLS FLOW DIAGRAM
NO.	DWG. NO.	TITLE
REFERENCES		

THIS IS A COMPUTER GENERATED DRAWING DO NOT REVISE IT MANUALLY	AmerGen INSTRUMENT AIR FLOW DIAGRAM TURBINE BLDG. INSTRUMENT AIR COMPRESSOR AND DRYER TMI-1 302-270 SCALE: N/A
MARK TETKOSKIE 03/14/08 3/15/08 3:20 PM	SHEET 5 REV. 0