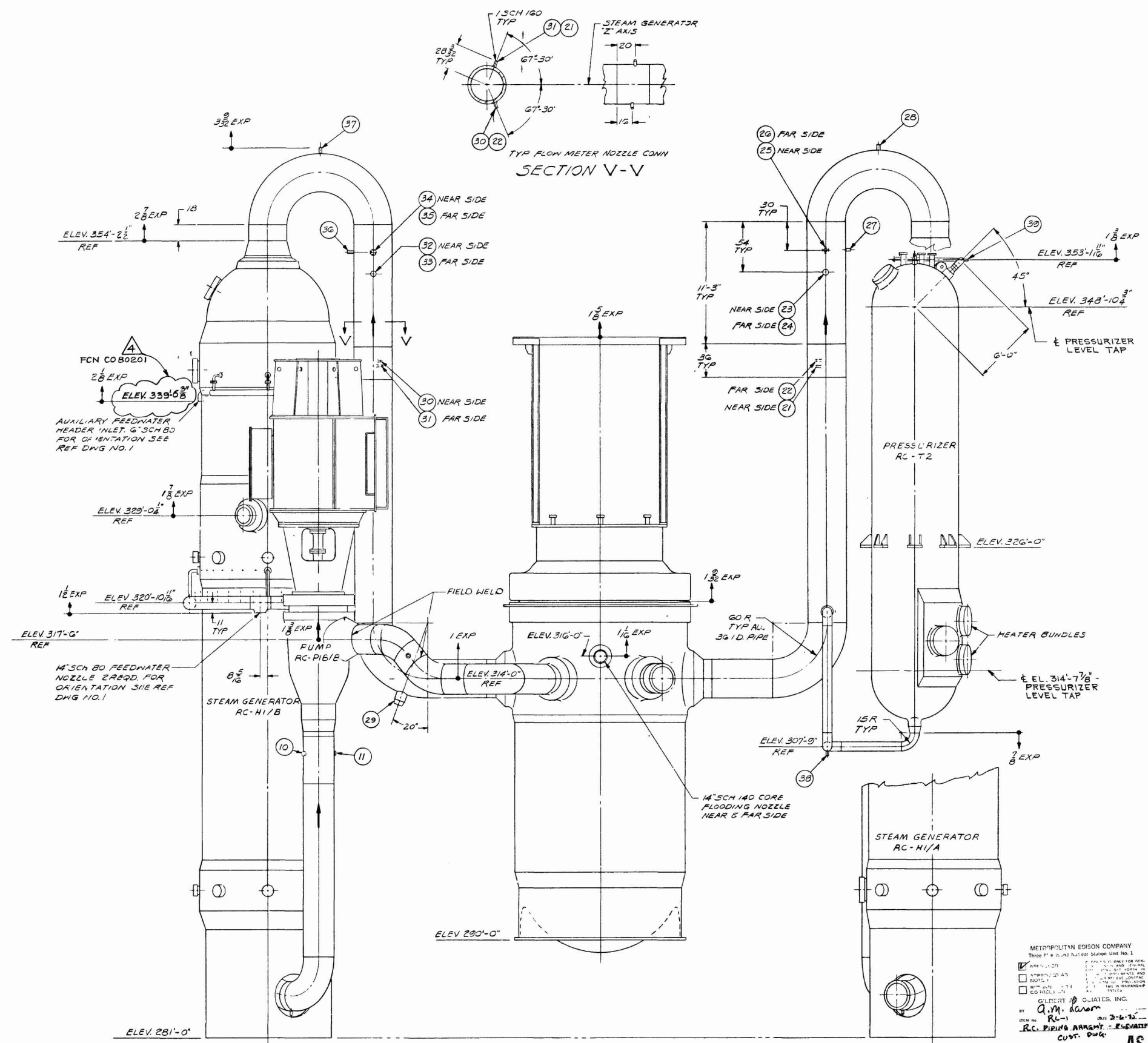


REVISIONS			
NO.	DESCRIPTION	DATE	APPROVAL
1	24 1/2 WAS 30 1/4 (E-M) HILL NOT 2" DUE TO FLANGES @ E 263	4-11-71	KCS
2	BY SECTION DIM FOR USE IN 1" HILL 24 1/4 (E-M)	5-12-71	KCS



- NOTES:
- FOR GENERAL NOTES AND PLAN VIEW SEE REF DWG 1
 - THERMAL EXPANSIONS INDICATED ON THIS DRAWING ARE FOR CLEARANCE PURPOSES ONLY AND NOT TO BE USED FOR ANY FLEXIBILITY ANALYSIS WORK. REFER TO SPECIFICATION 3002 NSS-5 FOR EXACT DISPLACEMENTS.

LIST OF CUSTOMER CONNECTIONS IN PIPING				
PIPING LEG	NOZZLE NO.	NO. FROM PIPING	DESCRIPTION & SIZE	INSTRUMENT NO.
STEAM GENERATOR HI A TO PUMP P1A A	1, 2, 3, 4	26 1/4, 20 19 32, 25, 24 3 4	DRAIN - 1 1/2" SCH 160 FAST RESPONSE RTE CONNECTION STANDARD RTE CONNECTION PRESS. TAP 1" SCH 160	RC5A-TE1 & TE2 TE-959, SPARE FCN C080201
STEAM GENERATOR HI B TO PUMP P1B A	5, 6, 7, 8	26 1/4, 20 19 32, 25, 24 3 4	DRAIN - 1 1/2" SCH 160 FAST RESPONSE RTE CONNECTION STANDARD RTE CONNECTION PRESS. TAP 1" SCH 160	RC5A-TE3 & TE4 TX PX
STEAM GENERATOR HI B TO PUMP P1B B	9, 10, 11	26 1/4, 20 19 32, 25	DRAIN - 1 1/2" SCH 160 FAST RESPONSE RTE CONNECTION STANDARD RTE CONNECTION	RC5B-TE1 & TE2 TX
STEAM GENERATOR HI B TO PUMP P1A B	12, 13, 14	25 5/8, 20 19 32, 25	DRAIN - 2 1/2" SCH 160 FAST RESPONSE RTE CONNECTION STANDARD RTE CONNECTION	RC5B-TE3 & TE4 TE-960, SPARE FCN C080201
PUMP P1B A TO REACTOR VESSEL	15, 16	30 1 1/6, 24 3 4	HIGH PRESS. INJECTION - 2 1/2" SCH 160 PRESS. AND LEVEL TAP - 1" SCH 160	PX & LX
PUMP P1A A TO REACTOR VESSEL	17, 18	30 1 1/6, 24 3 4	HIGH PRESS. INJECTION - 2 1/2" SCH 160 PRESS. TAP - 1" SCH 160	PX
PUMP P1A B TO REACTOR VESSEL	19	30 1 1/6	HIGH PRESS. INJECTION - 2 1/2" SCH 160	
PUMP P1B B TO REACTOR VESSEL	20	30 1 1/6	HIGH PRESS. INJECTION - 2 1/2" SCH 160	
REACTOR VESSEL TO STEAM GENERATOR HI A	21, 22, 23, 24, 25, 26, 27, 28	28 3 3/2, 28 3 3/2, 24 19 32, 24 19 32, 29 3 8, 29, 29 3 8, 29 3 8	FLOWMETER CONN 1" SCH 160 FLOWMETER CONN 1" SCH 160 FAST RESPONSE RTE CONNECTION FAST RESPONSE RTE CONNECTION PRESS. TAP - 1" SCH 160 STANDARD RTE CONNECTION PRESS. TAP - 1" SCH 160 VENT CONN - 1" SCH 160	RC14A-0PT1 & 0PT2 RC14A-0PT3 & 0PT4 RC4A-TE1 & TE2 RC4A-TE3 & TE4 RC2A-F12 & P14 TE-958, SPARE RC5A-PT1 & PT3 FCN C080201
REACTOR VESSEL TO STEAM GENERATOR HI B	29, 30, 31, 32, 33, 34, 35, 36, 37	37 1/4, 28 3 3/2, 28 3 3/2, 24 19 32, 24 19 32, 29 3 8, 29 3 8, 29 3 8	DECAY HEAT CONN - 12" SCH 140 FLOWMETER CONN - 1" SCH 160 FLOWMETER CONN - 1" SCH 160 FAST RESPONSE RTE CONNECTION FAST RESPONSE RTE CONNECTION STANDARD RTE CONNECTION PRESS TAP - 1" SCH 160 PRESS TAP - 1" SCH 160 VENT CONN - 1" SCH 160	RC14B-0PT1 & 0PT2 GTX RC14B-0PT3 & 0PT4 RC4B-TE1 & TE2 RC4B-TE3 & TE4 TE-960, SPARE RC3B-PT2 RC3B-PT1 & PT3 FCN C080201
SURGE LINE TO PRESSURIZER	38	10 7 8	DRAIN - 1" SCH 160	
SPRAY LINE TO PRESSURIZER	39, 40, 41	2 5/8, 5 1/4, 5 1/4	AUX. SPRAY LINE - 1 1/2" SCH 160 VALVE BY PASS CONN - 3 4" SCH 160 VALVE BY-PASS CONN - 3 4" SCH 160	

* NOTE THE PIPING TO THE LETDOWN COOLERS WILL BE TIED INTO THIS DRAIN LINE

NUCLEAR SAFETY RELATED

Gilbert/Commonwealth, Inc.

REVISED TO INCORPORATE G/C DWG. 641-042 REV. 1 & TO INDICATE AS-BUILT CONDITIONS PER G/PUN FCN-C080201 & G/C INC. ECN-1820

INTERFACE: N I

4

Gilbert/Commonwealth, Inc.

AS-BUILT PER DCN-C060501 & ECN-1290

CM RE 4

3

2 REACTOR COOLANT SYS PEI

1 REACTOR COOLANT PIPING ARRST PLAN

DRAWING TITLE

REFERENCE DRAWINGS

27617F

16-1-71

G20-0005-50-00

DWG NO.

OWN BY: CMAYS

CHKD BY: J. H.

PASSED BY: J. H.

APPROV BY: B. H.

STD. SPL. DATE

8-20-0005-50-00

SCALE

REACTOR COOLANT PIPING ARRANGEMENT ELEVATION CUSTOMER DRAWING

THIS DRAWING IS THE PROPERTY OF THE BARCOCK & WILCOX COMPANY

AND IS LOANED UNDER AGREEMENT THAT IT IS TO BE USED ONLY FOR THE PURPOSES FOR WHICH IT WAS LOANED AND IS NOT TO BE REPRODUCED OR COPIED IN ANY MANNER WITHOUT THE WRITTEN PERMISSION OF THE BARCOCK & WILCOX COMPANY

REV. 4

103438

44-34-19-9