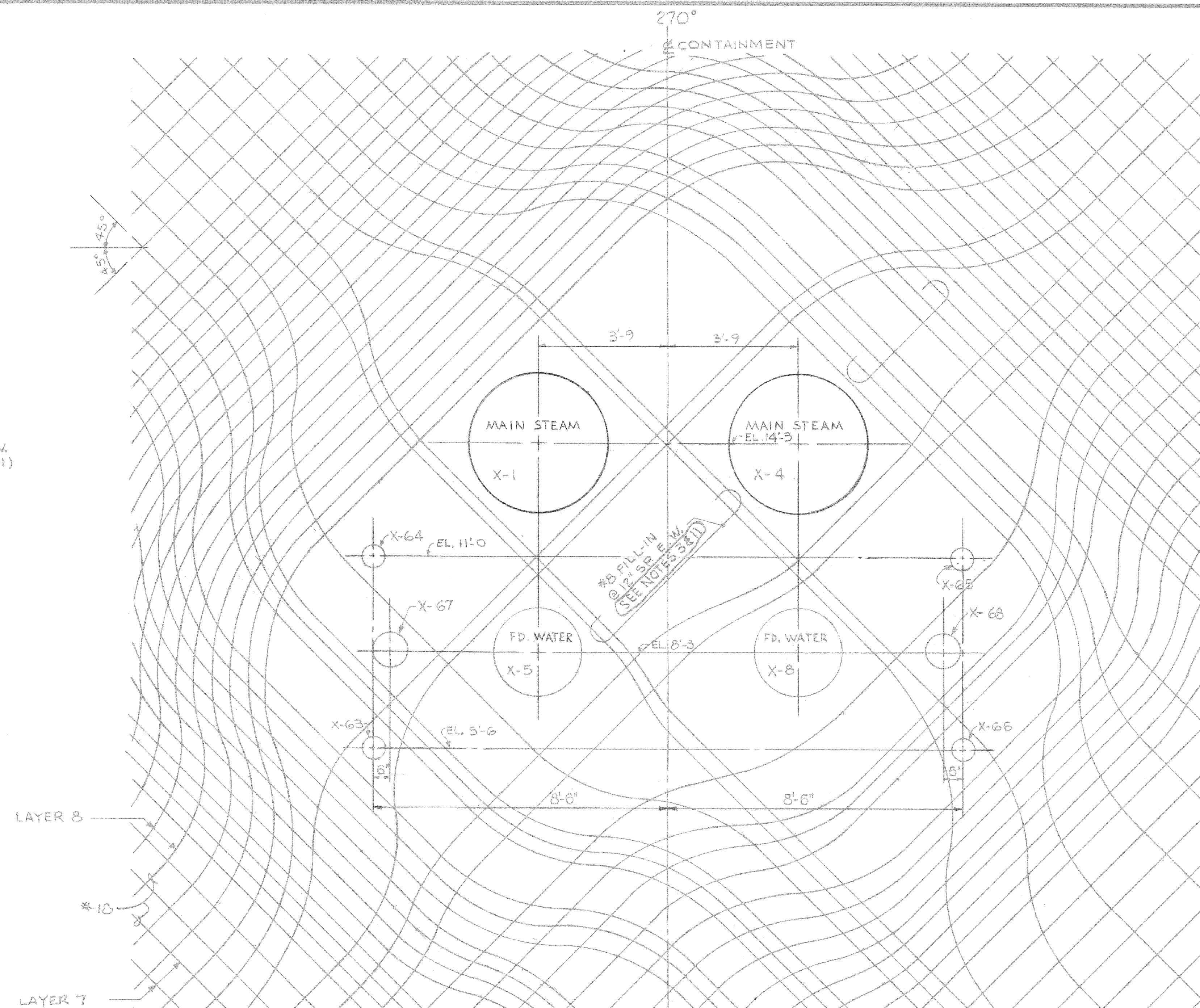
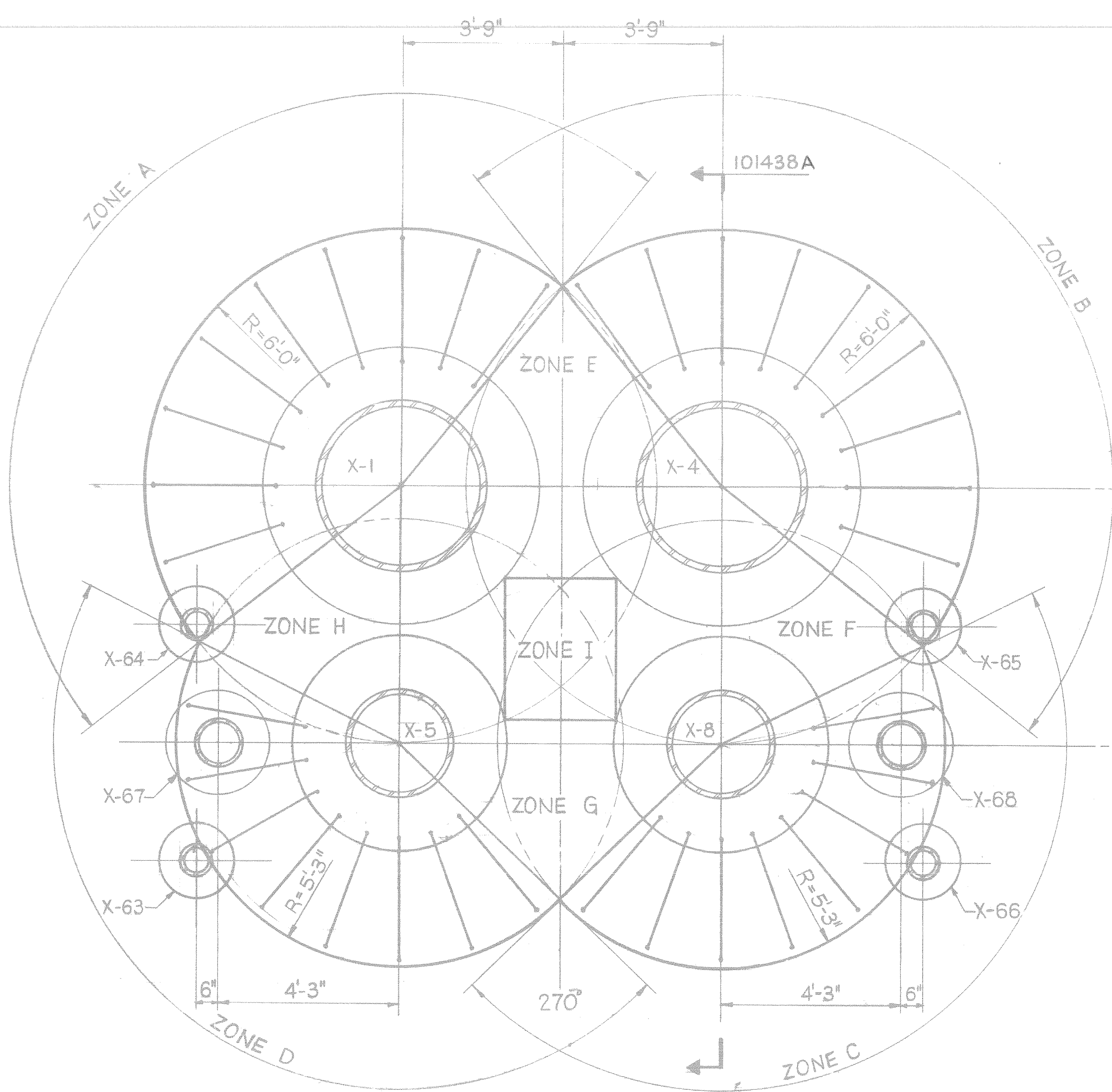


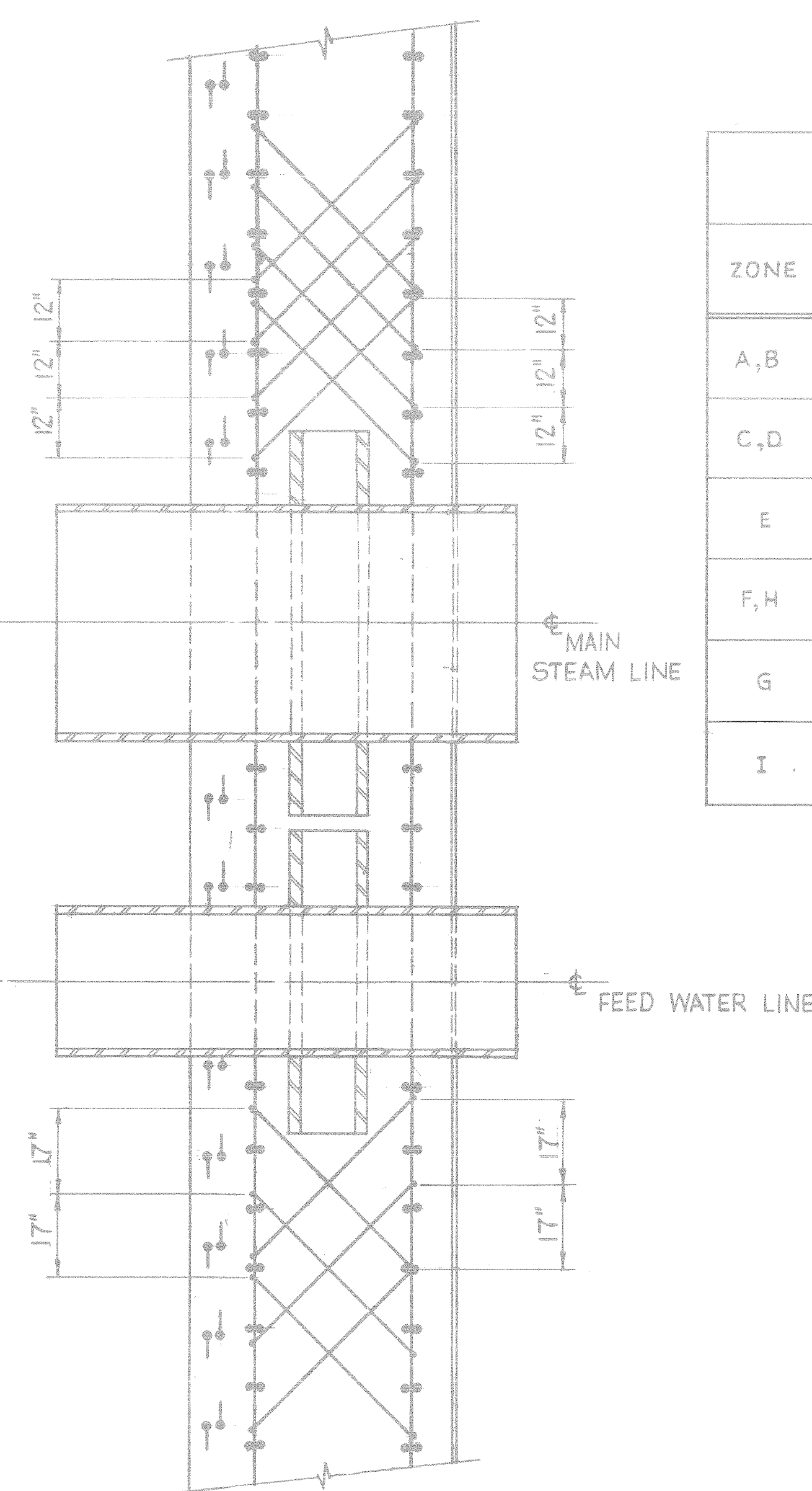
HOOP & MERIDIONAL REINFORCING AT PENETRATIONS  
SCALE  $\frac{1}{2}" = 1'-0"$   
( REINF. PATTERN SIMILAR @ 90° PENETRATIONS )



DIAGONAL REINFORCING AT PENETRATIONS  
SCALE - 1/2" = 1'-0"  
(REINF. PATTERN SIMILAR @ 90° PENETRATIONS)



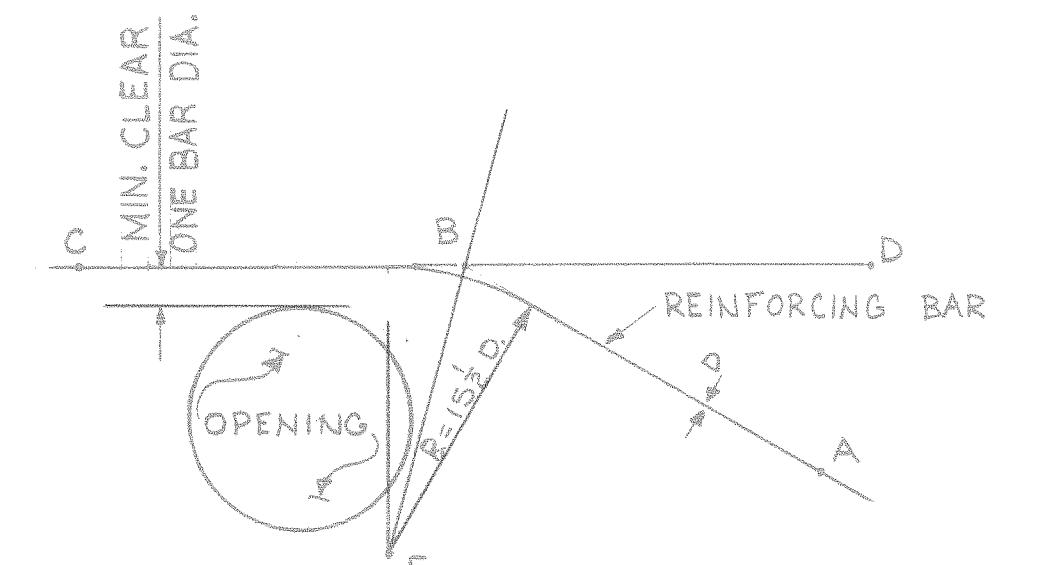
STIRRUP ARRANGEMENT AT 270° PENETRATIONS  
SCALE:  $\frac{1}{2}$ " = 1'-0"  
(SIMILAR AT 90° PENETRATIONS)



SECTION 101438A  
SCALE  $\frac{1}{2} = 1'-0"$

<p align="center"><u>TABLE OF INCLINED SHEAR REINFORCING</u> <u>AT 90°/270° M.S. &amp; F.W. PENETRATIONS</u></p>		
ZONE	TOTAL AREA OF REIN. REQ'D. IN EACH ZONE	REMARKS
A, B	42.24 IN. <sup>2</sup> (21.12 IN. <sup>2</sup> IN EACH DIRECTION)	STIRRUPS TO BE UNIFORMLY DISTRIBUTED IN 4 LAYERS AS SHOWN IN SECTION
C, D	26.40 IN. <sup>2</sup> (13.20 IN. <sup>2</sup> IN EACH DIRECTION)	STIRRUPS TO BE UNIFORMLY DISTRIBUTED IN 3 LAYERS AS SHOWN IN SECTION
E	8.88 IN. <sup>2</sup> (4.44 IN. <sup>2</sup> IN EACH DIRECTION)	STIRRUPS TO BE UNIFORMLY DISTRIBUTED IN AS MANY LAYERS AS POSSIBLE
F, H	19.14 IN. <sup>2</sup> (9.57 IN. <sup>2</sup> IN EACH DIRECTION)	
G	8.40 IN. <sup>2</sup> (4.20 IN. <sup>2</sup> IN EACH DIRECTION)	
I	21.12 IN. <sup>2</sup> (10.57 IN. <sup>2</sup> IN EACH DIRECTION)	

- CRITERIA FOR BAR BENDING AT PENETRATIONS  
OTHER THAN EQUIP. HATCH & PERSONNEL AIR LOCK



- 1) THE BISCOT LINE SHALL NOT INTERSECT THE ADJACENT OPENING WHERE THIS CAN NOT BE FOLLOWED THE BACK BARS SHALL BE PROVIDED
- 2) ANGLE DBA SHALL BE 30 (31.5°). FOR LOCATIONS LIMITED BY BEND RADIUS OR SPACING REQUIREMENT ANGLE DBA MAY BE INCREASED TO A MAXIMUM OF 30°.
- 3) FOR #4 & #18 BARS, BEND RADIUS SHALL BE A MINIMUM OF 1/3 BAR DIAM FROM INSIDE OF BAR.
- 4) A MINIMUM SPACING FOR #18 BARS SHALL BE 5" .
- 5) MINIMUM CLEARANCE BETWEEN REINFORCING AND OPENING SHALL BE ONE BAR DIAMETER.
- 6) ALL PRIMARY RE BARS (LAYERS 1 TO 8) SHALL BE BENT AROUND PENETRATIONS AND BE CONTINUOUS THROUGH PENETRATIONS.
- 7) DEVIATION FROM THE ABOVE CRITERIA SHALL BE APPROVED BY U.E.R.C. ENGINEER.

NOTES:

1. FOR REFERENCE DWGS, SEE DWG. NO. 9763-F-101435.
2. DETAILS OF RE-BARS AROUND PENETRATIONS TO BE DEVELOPED BY THE RE-BAR DETAILER AS PER CRITERIA SHOWN ON THIS DWG.
3. #6 @ 12" FILL-IN BARS ARE REQUIRED ON EACH LAYER (1 TO 5) OF REBARS AT PENETRATION X1 TO X8, HVAC I, HVAC C, X-38, X-71 & X-72.
4. FOR STIRRUP DETAIL SEE DWG. NO. 9763-F-101435.
5. ~~DELETED~~
6. ~~DELETED~~
7. MAX. CIRCUMFERENTIAL SPACING OF STIRRUPS SHOULD BE 17" AT MIDDLE SECTION OF WALL.
8. #6, #8, 10 OR LARGER SIZE OF STIRRUPS CAN BE USED TO MEET AREA REQUIREMENT FOR A PARTICULAR ZONE.
9. 10" HIGHER SIZE STIRRUPS TO BE USED FOR PLATE AT BOTH ENDS. SEE DWG. 9763-F-101441 FOR PLATE SIZE.
10. FOR GENERAL NOTES SEE DWG. 9763-F-101435.
11. STIRRUPS ARE TO BE RADIAL WITH RESPECT TO THE CENTER OF PENETRATION.
11. ADDITIONAL #8 FILL IN BARS MAY BE ADDED AS REQUIRED. MINIMUM SPACING SHALL BE 16".

N-STAMP ITEM  
HOQAE *SM Haque*

**CONTAINMENT  
CONCRETE  
REINFORCING AT PENETRATIONS**  
PUBLIC SERVICE CO. OF NEW HAMPSHIRE

**SEABROOK STATION**  
**United engineers & constructors Inc.**

UNITS 1 AND 2	9763-F-101438
---------------	---------------

1 AREA 017 CS

4	7381	ADD REF NOTE FOR FILL-IN DATA & NOTI FOR C&A CRD/RA	CM	RD	RD	RD	DHR		PU
5	52678	DESIG FOR CONSTRUCTION MODIFIED PILE PATTERNS FOR PILE DRIVERS (52678)	eam	RD	RD	RD	DHR		
6	71676	FOR FABRICATION	eam	RD	RD	RD	DHR		
REV.	DATE	DESCRIPTION	DMN BY	ORD BY	ENG.	SUP. BY	ENGR.		

CONST.	N.A.	DISCIPLINE	CKD.	BY	DATE	DISCIPLINE	CKD.	BY	DATE
		STRUCT.		ESU	7-28-80	INST. & CONTR.		N.A.	
		MISC.		N.A.		ELECT.		N.A.	
		NUCLEAR		N.A.		MISC. SVCS.		N.A.	





10°  
101437A CONTAINMENT

12" @ R-72" 1/2"

#18 (TYP)

# NOTES

1. FOR GENERAL NOTES SEE DWG. NO. 9763-F-101435.
2. LAYER 2 MERIDIONAL BARS MAY BE OUT OF PLANE DUE TO OVERLAPPING APEX BARS.

270°

CADWELD SPLICE (TYP.)  
(STAGGER)

2'-3" MIN.  
2'-0" UNIT 1  
3'-0" UNIT 2

#18 (TYP)

PARTIAL PLAN DOME REINFORCING  
BOTTOM LAYER  
SCALE 1/4"=1'-0"

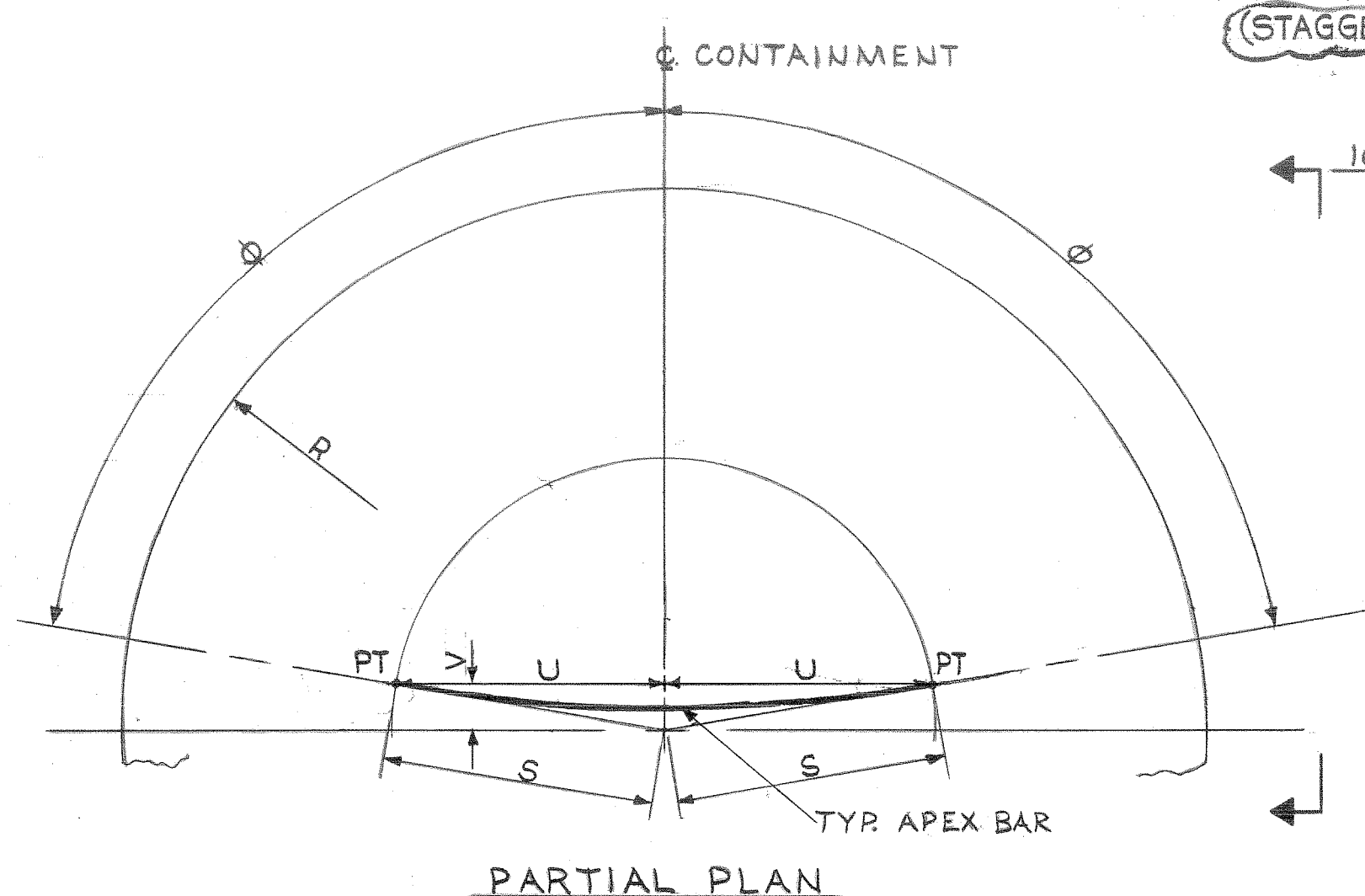
#18 HOOP

FOR APEX REINFORCING DETAILS  
SEE PLAN & ELEVATIONS BELOW

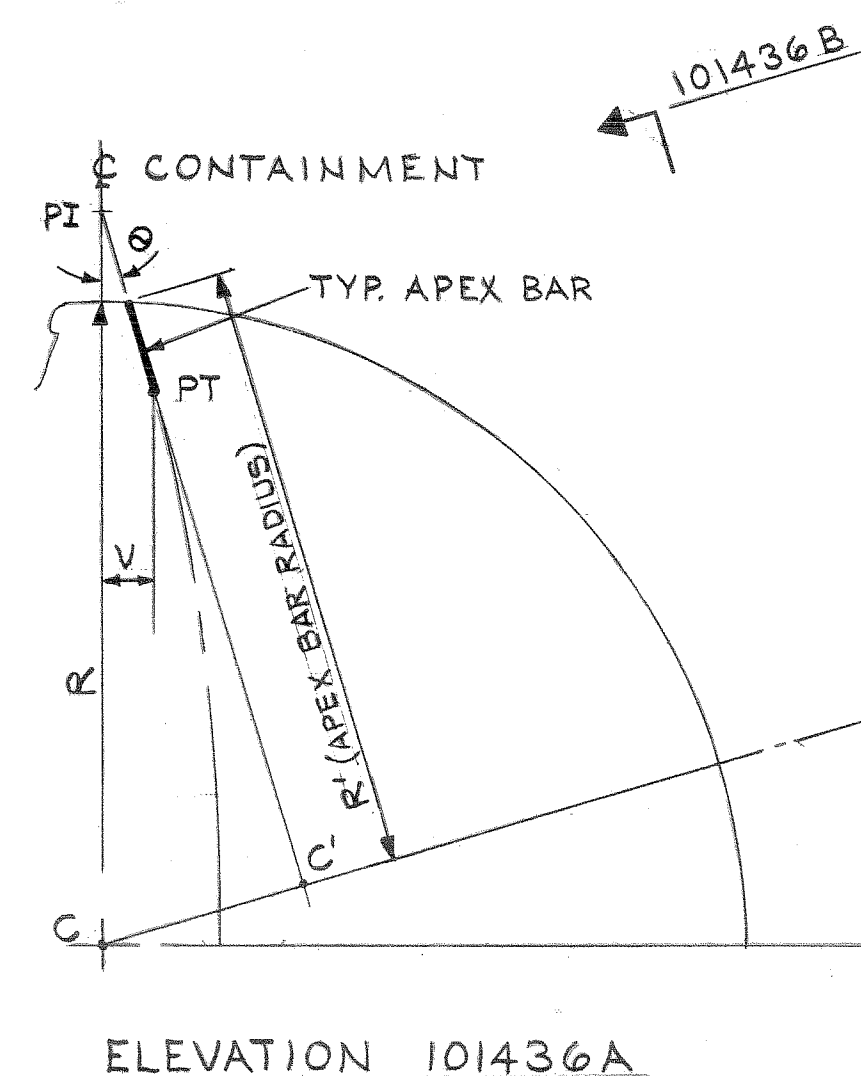
90°

## REFERENCE DRAWINGS

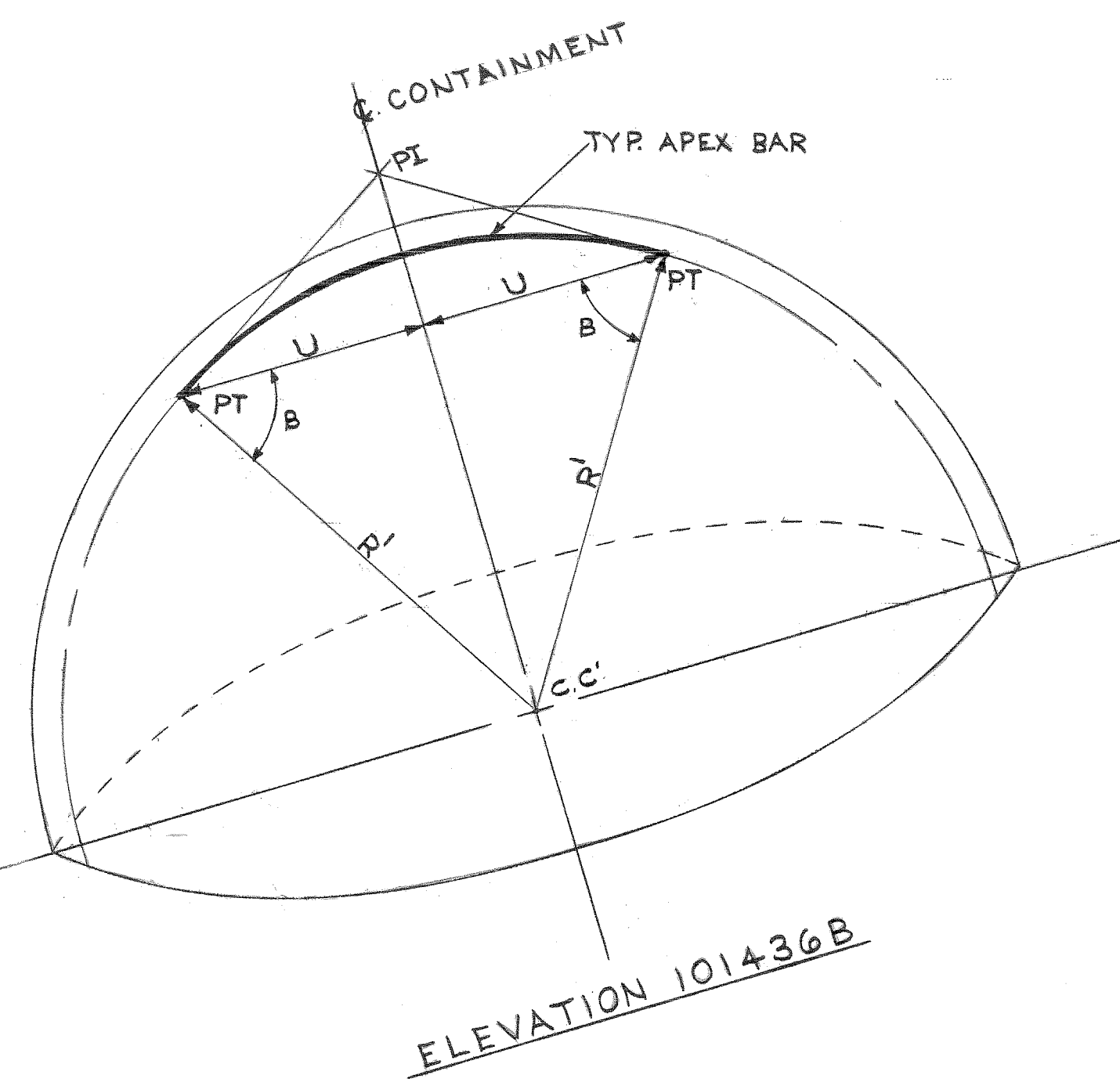
1. 9763-F-101437 - CONTAINMENT CONCRETE DOME REINFORCING SHT. 2.
2. 9763-F-101491 - CONTAINMENT CONCRETE DOME REINFORCING SHT. 3.



PARTIAL PLAN



ELEVATION 101436A



ELEVATION 101436B

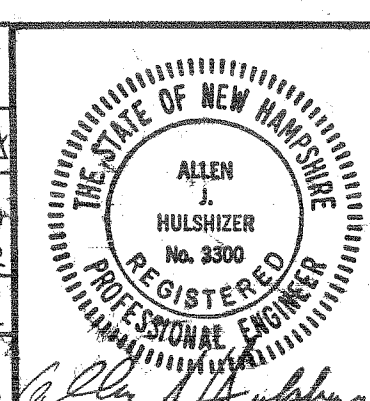
NOTE  
ALL APEX BARS ARE SINGLE PLANE BEND BARS  
ALONG THE SURFACE OF DOME WITH A DEFINITE  
RADIUS CALCULATED ON THE BASIS OF GEOMETRICAL  
RELATIONS TO ACHIEVE PROPER TANGENCY WITH  
MERIDIONAL BARS.

N-STAMP ITEM  
HOQAE

CONTAINMENT  
CONCRETE  
DOME REINFORCING - SHEET 1  
PUBLIC SERVICE CO. OF NEW HAMPSHIRE  
SEABROOK STATION  
united engineers a constructors inc.

UNITS 1 AND 2 9763-F-101436

REV.	DATE	DESCRIPTION	CHK. BY	DATE	DISCIPLINE	CHK. BY	DATE
3	1-11-80	REV'D. CADWELD SPLICES ON PLAN ADDED NOTE 2. REMOVED HOLDING NOTE & REV'D. DIM. ON PLAN PER ECA 010624	EH		STRUCT.	RD	12-88
2	10-10-80	ISSUED FOR CONSTRUCTION AND ADDED HOLD A.	EH		MECH.	HA	
1	2-12-80	ISSUED FOR DETAILING & FABRICATION REVISED PARTIAL PLAN DOME REINFORCING PER ECA 010624C.	EH		NUCLEAR	HA	
0	7-16-76	FOR FABRICATION	SGN				



DISCIPLINE	CHK. BY	DATE	DISCIPLINE	CHK. BY	DATE
STRUCT.	RD	12-88	INST. & CONTR.	HA	
MECH.	HA		ELECT.	HA	
NUCLEAR	HA		MECH. SVCS.	HA	

1 AREA 017 CS



SECURITY-RELATED INFORMATION  
WITHHELD UNDER 5 USC SECTION 552(b)  
(4) AND 5 USC SECTION 552(b)(7)(F)

SECURITY-RELATED INFORMATION  
WITHHELD UNDER 5 USC SECTION 552(b)  
(4) AND 5 USC SECTION 552(b)(7)(F)

SECURITY-RELATED INFORMATION  
WITHHELD UNDER 5 USC SECTION 552(b)  
(4) AND 5 USC SECTION 552(b)(7)(F)

SECURITY-RELATED INFORMATION  
WITHHELD UNDER 5 USC SECTION 552(b)  
(4) AND 5 USC SECTION 552(b)(7)(F)

SECURITY-RELATED INFORMATION  
WITHHELD UNDER 5 USC SECTION 552(b)  
(4) AND 5 USC SECTION 552(b)(7)(F)

SECURITY-RELATED INFORMATION  
WITHHELD UNDER 5 USC SECTION 552(b)  
(4) AND 5 USC SECTION 552(b)(7)(F)



SECURITY-RELATED INFORMATION  
WITHHELD UNDER 5 USC SECTION 552(b)  
(4) AND 5 USC SECTION 552(b)(7)(F)

SECURITY-RELATED INFORMATION  
WITHHELD UNDER 5 USC SECTION 552(b)  
(4) AND 5 USC SECTION 552(b)(7)(F)

SECURITY-RELATED INFORMATION  
WITHHELD UNDER 5 USC SECTION 552(b)  
(4) AND 5 USC SECTION 552(b)(7)(F)



SECURITY-RELATED INFORMATION  
WITHHELD UNDER 5 USC SECTION 552(b)  
(4) AND 5 USC SECTION 552(b)(7)(F)

SECURITY-RELATED INFORMATION  
WITHHELD UNDER 5 USC SECTION 552(b)  
(4) AND 5 USC SECTION 552(b)(7)(F)

SECURITY-RELATED INFORMATION WITHHELD UNDER 5 USC SECTION 552(b)  
(4) AND 5 USC SECTION 552(b)(7)(F)



SECURITY-RELATED INFORMATION  
WITHHELD UNDER 5 USC SECTION 552(b)  
(4) AND 5 USC SECTION 552(b)(7)(F)

SECURITY-RELATED INFORMATION WITHHELD UNDER 5 USC SECTION 552(b)  
(4) AND 5 USC SECTION 552(b)(7)(F)