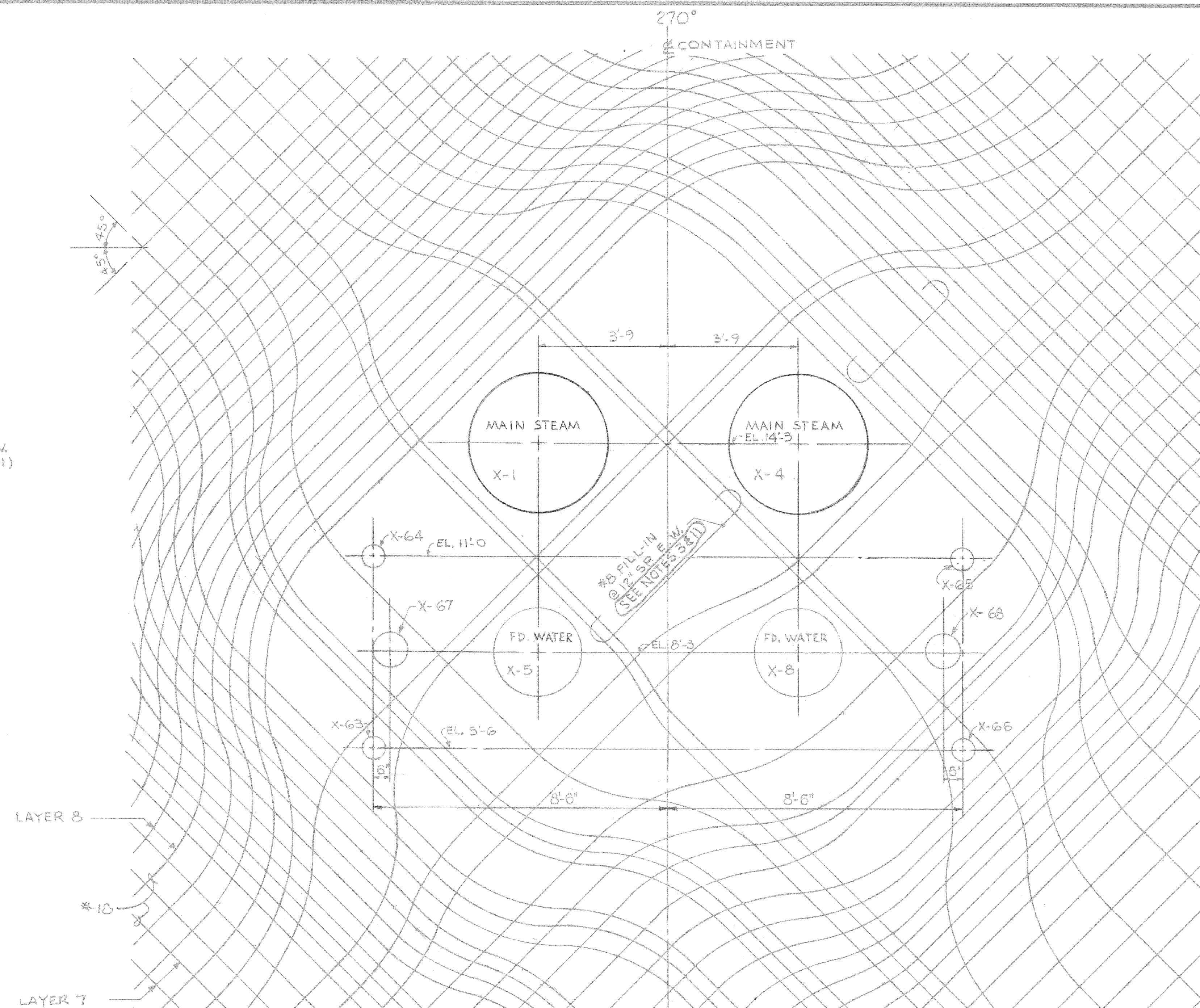
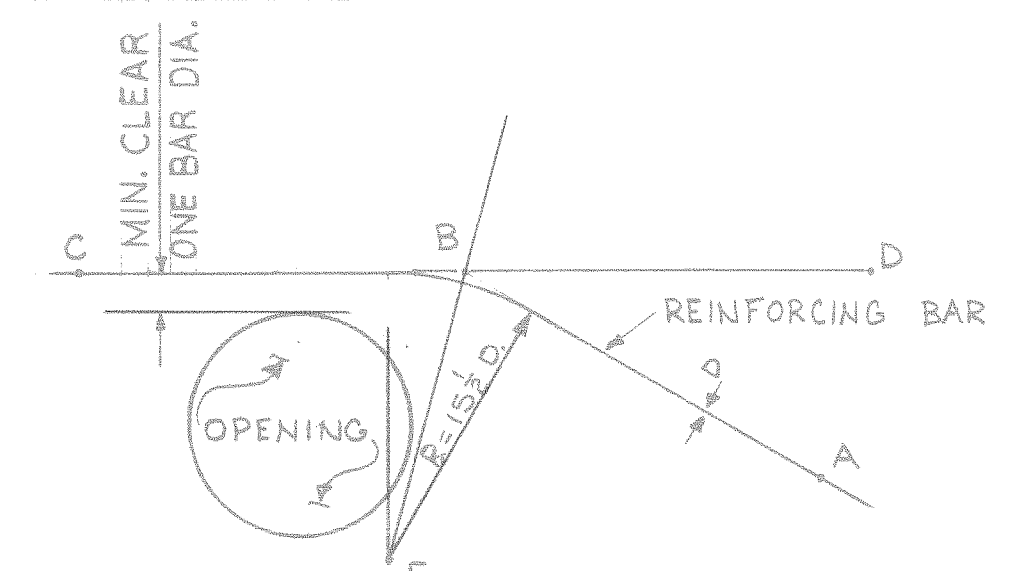


HOOP & MERIDIONAL REINFORCING AT PENETRATIONS
SCALE: 1/2" = 1'-0"
(REINF. PATTERN SIMILAR @ 90° PENETRATIONS)



DIAGONAL REINFORCING AT PENETRATIONS
SCALE: 1/2" = 1'-0"
(REINF. PATTERN SIMILAR @ 90° PENETRATIONS)

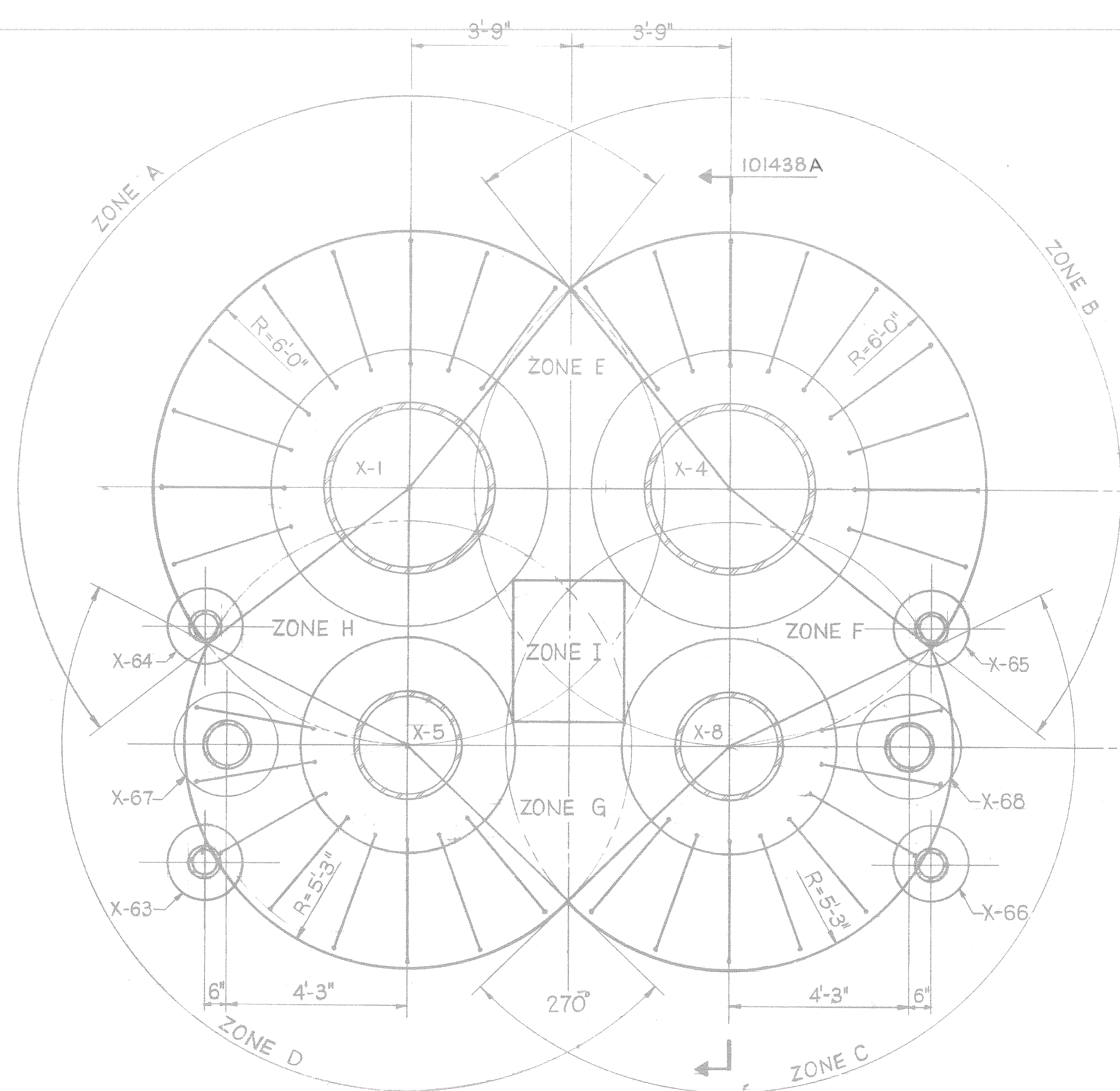
CRITERIA FOR BAR BENDING AT PENETRATIONS
OTHER THAN EQUIP. HATCH & PERSONNEL AIR LOCK



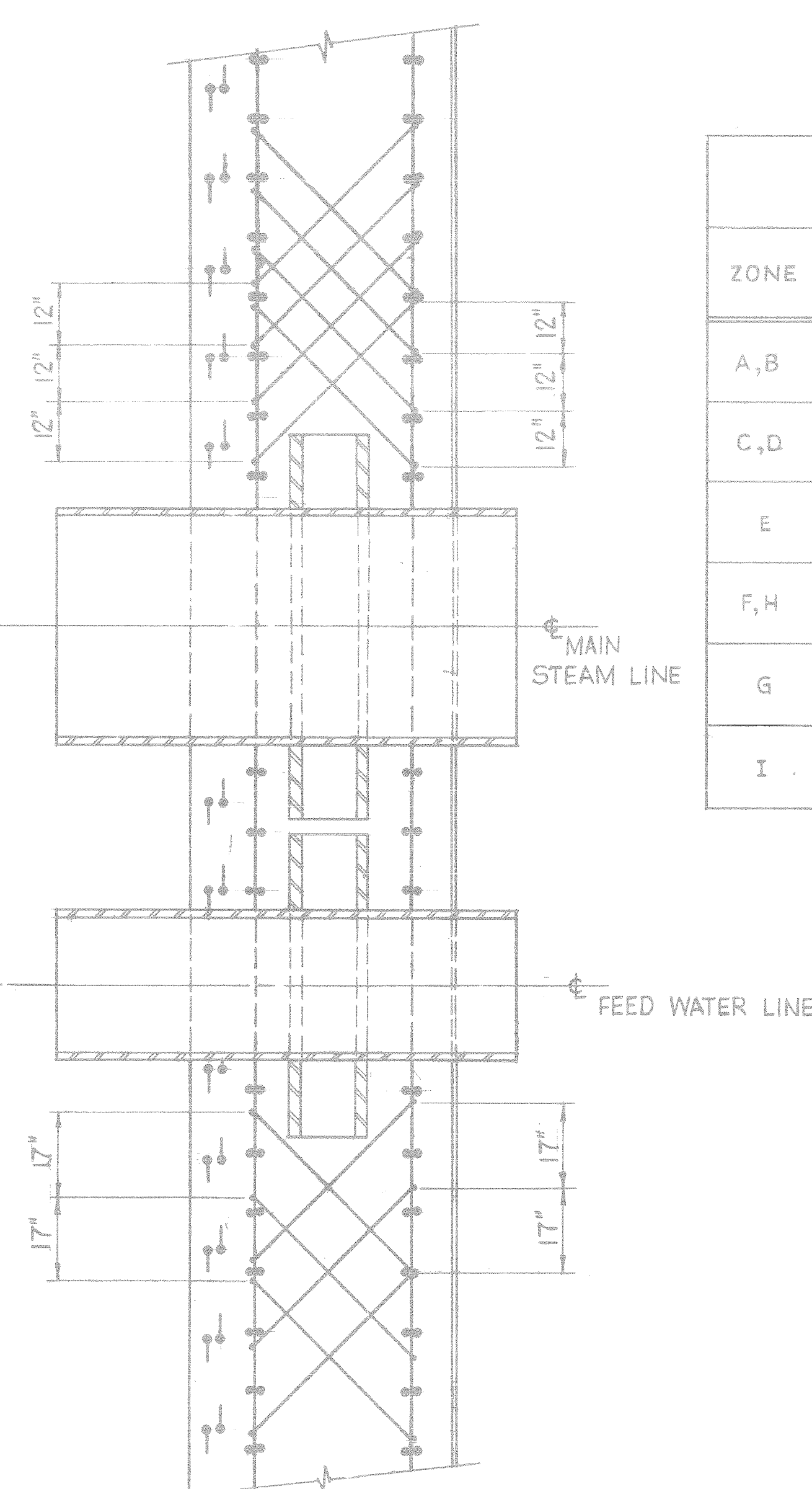
- 1) THE BISECT LINE BE SHALL NOT INTERSECT THE ADJACENT OPENING. WHERE THIS CAN NOT BE FOLLOWED THE BACK BARS SHALL BE PROVIDED.
- 2) ANGLE DBA SHALL BE (30/15° FOR LOCATIONS LIMITED BY BEND RADIUS OR SPACING REQUIREMENT. ANGLE DBA MAY BE INCREASED TO A MAXIMUM OF 30°.
- 3) FOR #14 & #18 BARS BEND RADIUS SHALL BE A MINIMUM OF 15 \times BAR DIAM. FROM INSIDE OF BAR.
- 4) MINIMUM SPACING FOR #18 BARS SHALL BE 5" ϕ .
- 5) MINIMUM CLEARANCE BETWEEN REINFORCING AND OPENING SHALL BE ONE BAR DIAMETER.
- 6) ALL PRIMARY RE-BARS (LAYERS 1 TO 5) SHALL BE BENT AROUND PENETRATIONS AND BE CONTINUOUS OR COLDWELD SPLICED.
- 7) DEVIATION FROM THE ABOVE CRITERIA SHALL BE APPROVED BY U.E.C. ENGINEER.

NOTES:

1. FOR REFERENCE DWGS. SEE DWG. NO. 9763-F-101435.
2. DETAILS OF RE-BARS AROUND PENETRATIONS TO BE DEVELOPED BY THE RE-BAR DETAILER AS PER CRITERIA SHOWN ON THIS DWG.
3. #8 @ 12" FILL-IN BARS ARE REQUIRED ON EACH LAYER (1 TO 5) OF RE-BARS AT PENETRATIONS X1 TO X8, HVAC 1, HVAC 2, X-38, X-71 & X-72.
4. FOR STIRRUP DETAIL SEE DWG. NO. 9763-F-101435.
5. ~~DELETED~~
6. ~~DELETED~~
7. MAX. CIRCUMFERENTIAL SPACING OF STIRRUPS SHOULD BE 17" AT MIDDLE SECTION OF WALL.
8. #6, #10 OR LARGER SIZE OF STIRRUPS CAN BE USED TO MEET AREA REQUIREMENT FOR A PARTICULAR ZONE. #10 OR HIGHER SIZE STIRRUPS SHALL HAVE PLATES AT BOTH ENDS. SEE DWG. 9763-F-101441 FOR PLATE SIZE.
9. FOR GENERAL NOTES SEE DWG. 9763-F-101435.
10. STIRRUPS ARE TO BE RADIAL WITH RESPECT TO THE CENTER OF PENETRATION.
11. ADDITIONAL 7/8" FILL-IN BARS MAY BE ADDED AS REQUIRED. MINIMUM SPACING SHALL BE 6" c/c.



STIRRUP ARRANGEMENT AT 270° PENETRATIONS
SCALE: 1/2" = 1'-0"
(SIMILAR AT 90° PENETRATIONS)



SECTION 101438A
SCALE: 1/2" = 1'-0"

TABLE OF INCLINED SHEAR REINFORCING AT 90°/270° M.S. & F.W. PENETRATIONS		
ZONE	TOTAL AREA OF REINF. REQ'D. IN EACH ZONE	REMARKS
A, B	42.24 IN. ² (21.12 IN. ² IN EACH DIRECTION)	STIRRUPS TO BE UNIFORMLY DISTRIBUTED IN 4 LAYERS AS SHOWN IN SECTION
C, D	26.40 IN. ² (13.20 IN. ² IN EACH DIRECTION)	STIRRUPS TO BE UNIFORMLY DISTRIBUTED IN 3 LAYERS AS SHOWN IN SECTION
E	18.88 IN. ² (9.44 IN. ² IN EACH DIRECTION)	STIRRUPS TO BE UNIFORMLY DISTRIBUTED IN AS MANY LAYERS AS POSSIBLE
F, H	13.14 IN. ² (9.57 IN. ² IN EACH DIRECTION)	
G	8.40 IN. ² (4.20 IN. ² IN EACH DIRECTION)	
I	21.14 IN. ² (10.57 IN. ² IN EACH DIRECTION)	

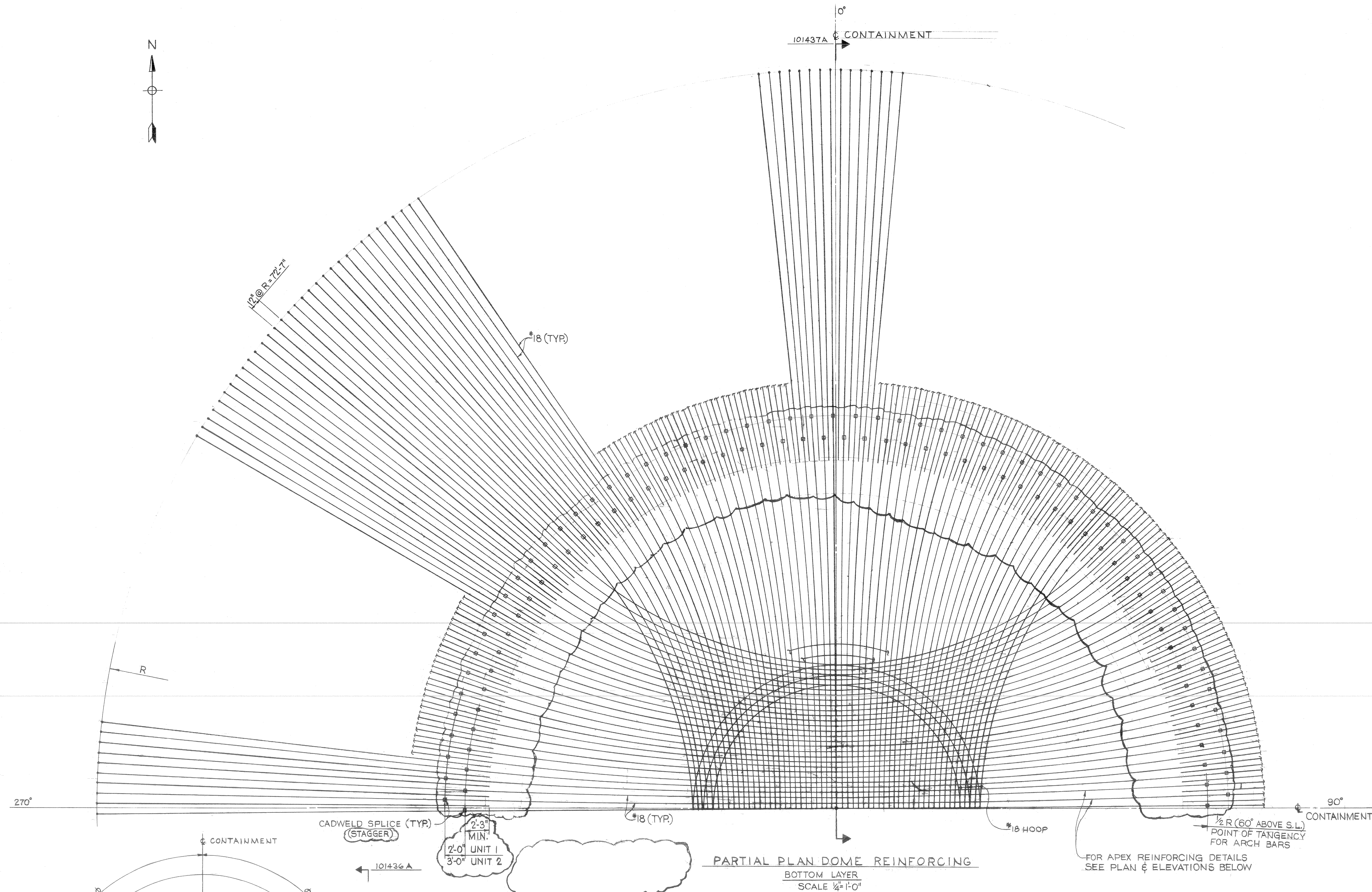
N-STAMP ITEM
HOQAQ

CONTAINMENT
CONCRETE
REINFORCING AT PENETRATIONS
PUBLIC SERVICE CO. OF NEW HAMPSHIRE
SEABROOK STATION
UNITED ENGINEERS & CONSTRUCTORS INC.
UNITS 1 AND 2 9763-F-101438

REV.	DATE	DESCRIPTION	DWN. BY	CHK. BY	ENGR.	SUP. ENGR.
4	7-8-81	ADD REF NOTE FOR FILL-IN BARS & NOTCH PER ECA CHART	CTM	W/A	W/A	DHR
3	5-26-78	ISSUED FOR CONSTRUCTION. MODIFIED REINF. PATTERNS. ADDED PENETS. PER DON CAGNETIC	W/A	W/A	W/A	W/A
2	7-18-76	FOR FABRICATION	W/A	W/A	W/A	W/A

DISCIPLINE	CHK. BY	DATE	DISCIPLINE	CHK. BY	DATE
STRUCT.	W/A	7-22-81	INST. & CONTR.	W/A	
MECH.	W/A		ELECT.	W/A	
NUCLEAR	W/A		MECH. SVCS.	W/A	

1 AREA 017 CS



NOTES

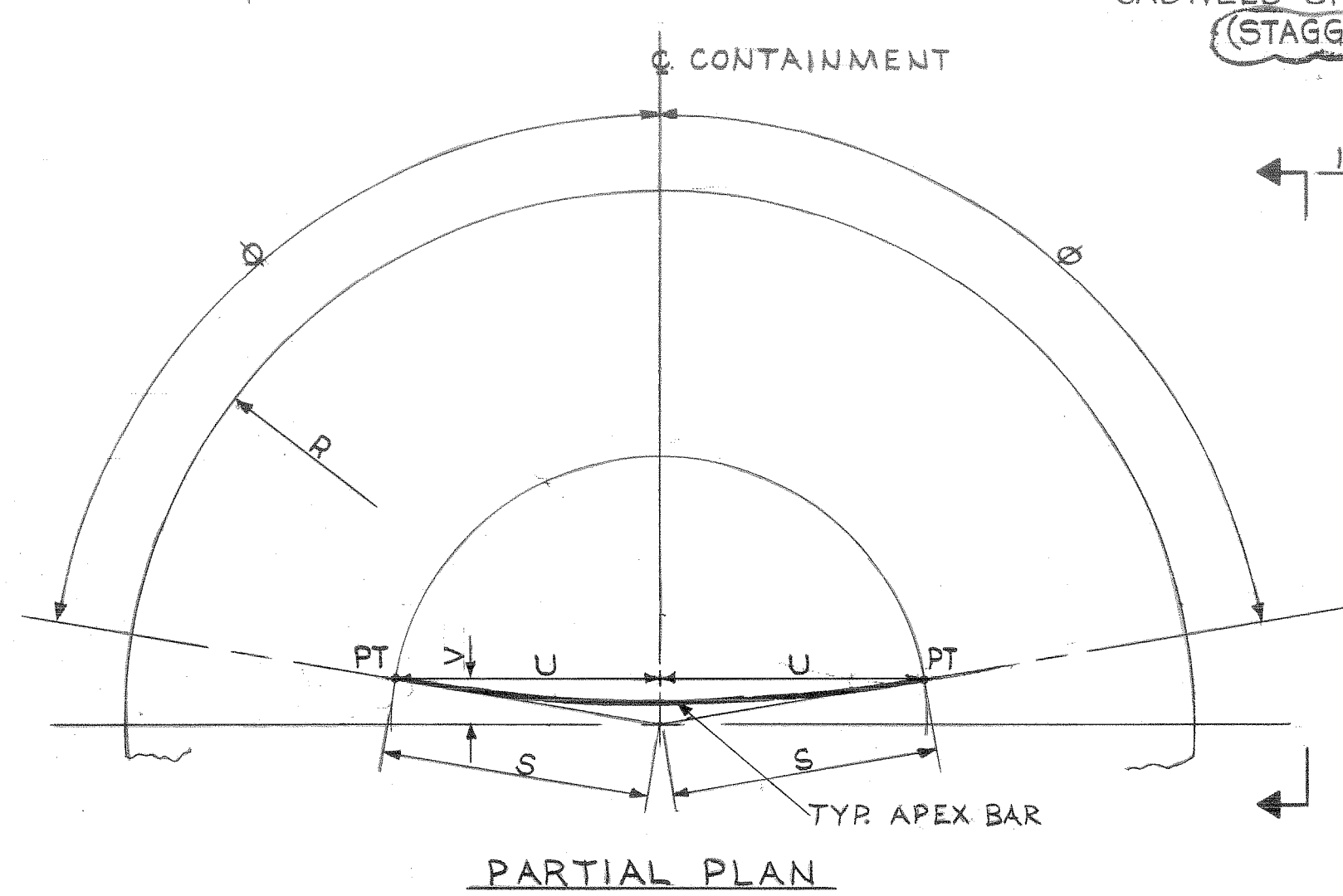
1. FOR GENERAL NOTES SEE DWG. NO. 9763-F-101435.
2. LAYER 2 MERIDIONAL BARS MAY BE OUT OF PLANE DUE TO OVERLAPPING APEX BARS.

REFERENCE DRAWINGS

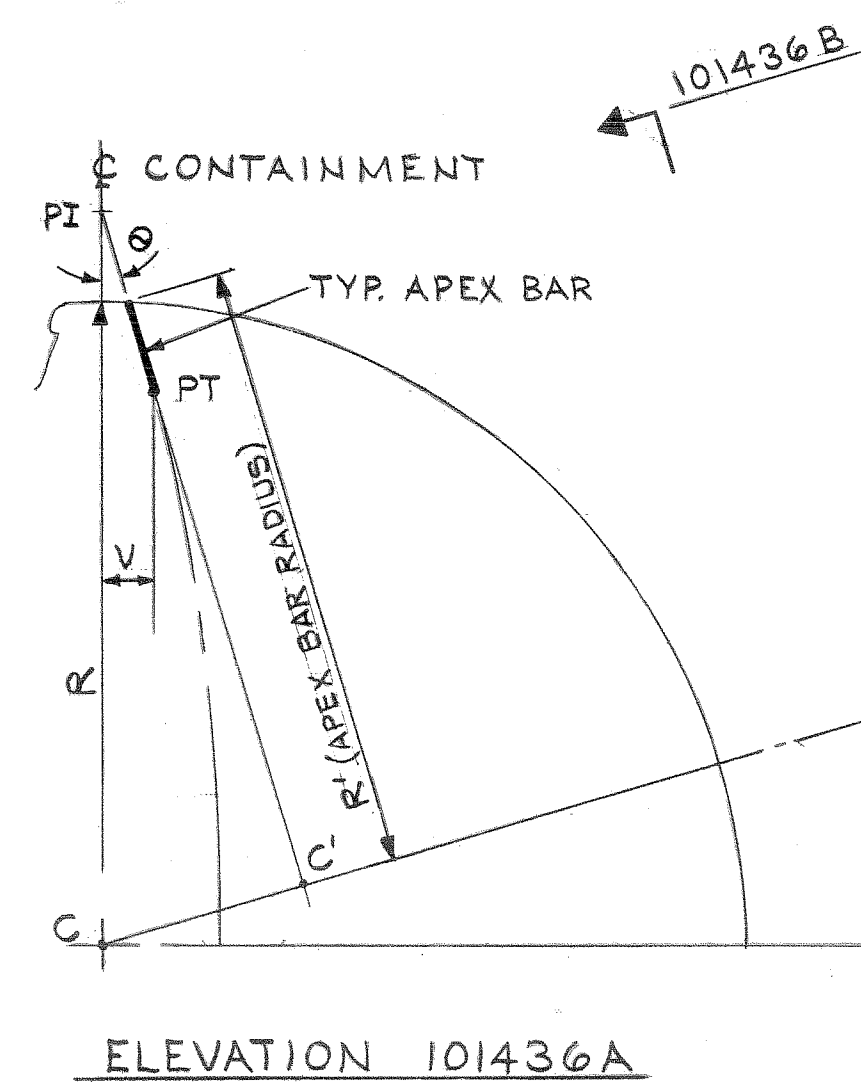
1. 9763-F-101437 - CONTAINMENT CONCRETE DOME REINFORCING SHT. 2.
2. 9763-F-101491 - CONTAINMENT CONCRETE DOME REINFORCING SHT. 3.

PARTIAL PLAN DOME REINFORCING
BOTTOM LAYER
SCALE 1/4"=1'-0"

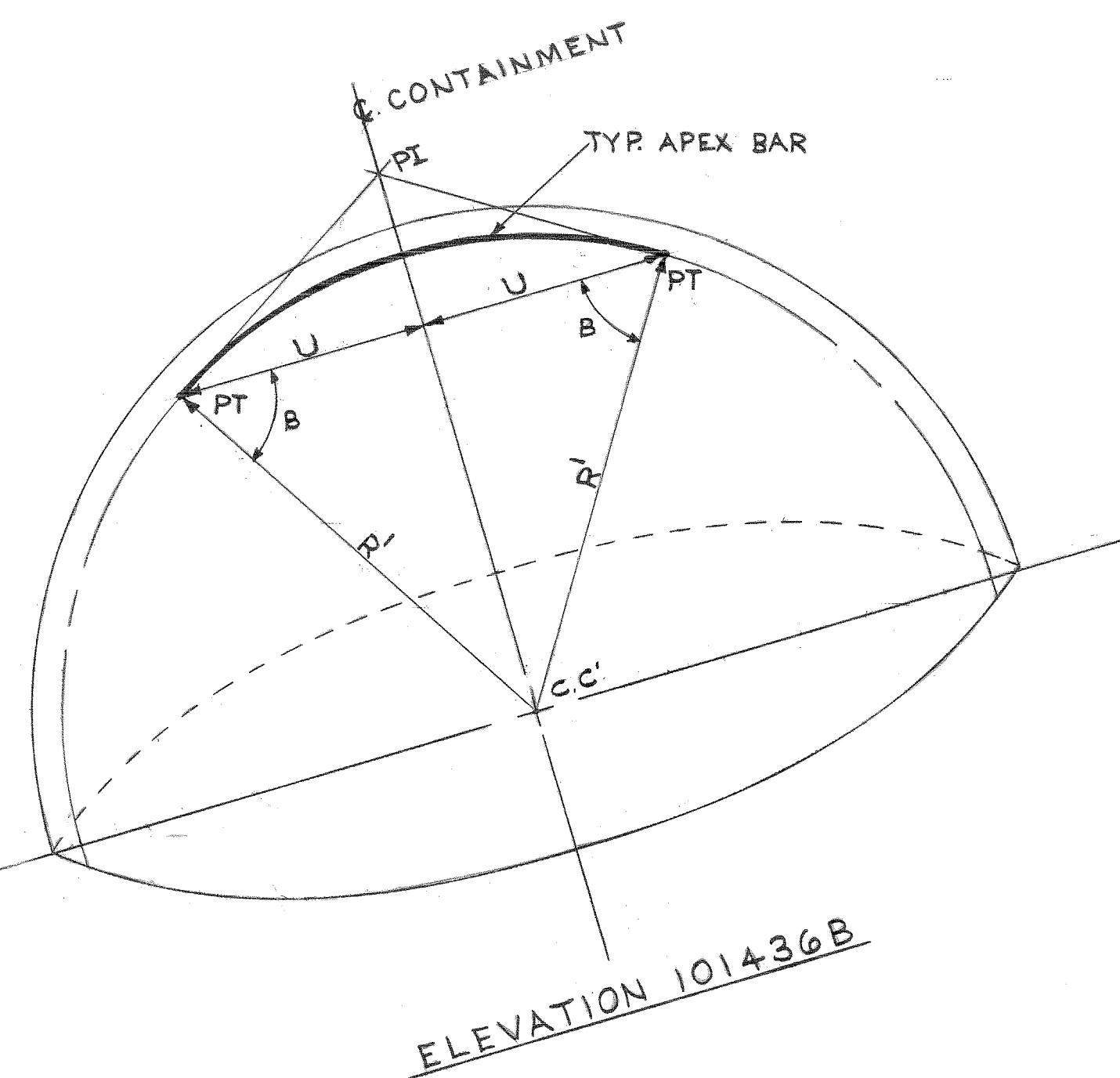
FOR APEX REINFORCING DETAILS
SEE PLAN & ELEVATIONS BELOW



PARTIAL PLAN



ELEVATION 101436A



ELEVATION 101436B

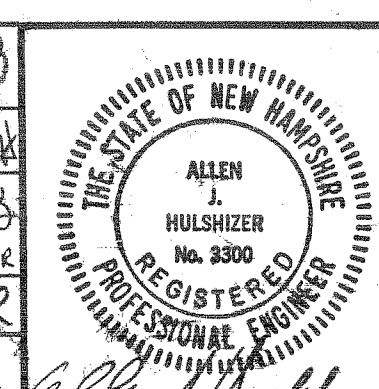
NOTE
ALL APEX BARS ARE SINGLE PLANE BEND BARS
ALONG THE SURFACE OF DOME WITH A DEFINITE
RADIUS CALCULATED ON THE BASIS OF GEOMETRICAL
RELATIONS TO ACHIEVE PROPER TANGENCY WITH
MERIDIONAL BARS.

N-STAMP ITEM
HOQAE

CONTAINMENT
CONCRETE
DOME REINFORCING - SHEET 1
PUBLIC SERVICE CO. OF NEW HAMPSHIRE
SEABROOK STATION
united engineers a constructors inc.

UNITS 1 AND 2 9763-F-101436

REV.	DATE	DESCRIPTION	CHK. BY	DATE	DISCIPLINE	CHK. BY	DATE
3	1-11-80	REV'D. CADWELD SPLICES ON PLAN NOTE & REV'D. DIM. ON PLAN PER ECA 010624	EH		STRUCT.	RD	12-88
2	10-10-80	ISSUED FOR CONSTRUCTION AND ADDED HOLD A.	EH		MECH.	HA	
1	2-12-80	ISSUED FOR DETAILING & FABRICATION REVISED PARTIAL PLAN DOME REINFORCING PER ECA 010624C.	EH		NUCLEAR	HA	
0	7-16-76	FOR FABRICATION	EH				



DISCIPLINE	CHK. BY	DATE	DISCIPLINE	CHK. BY	DATE
STRUCT.	RD	12-88	INST. & CONTR.	HA	
MECH.	HA		ELECT.	HA	
NUCLEAR	HA		MECH. SVCS.	HA	

1 AREA 017 CS

SECURITY-RELATED INFORMATION
WITHHELD UNDER 5 USC SECTION 552(b)
(4) AND 5 USC SECTION 552(b)(7)(F)

SECURITY-RELATED INFORMATION
WITHHELD UNDER 5 USC SECTION 552(b)
(4) AND 5 USC SECTION 552(b)(7)(F)

SECURITY-RELATED INFORMATION
WITHHELD UNDER 5 USC SECTION 552(b)
(4) AND 5 USC SECTION 552(b)(7)(F)

SECURITY-RELATED INFORMATION
WITHHELD UNDER 5 USC SECTION 552(b)
(4) AND 5 USC SECTION 552(b)(7)(F)

SECURITY-RELATED INFORMATION
WITHHELD UNDER 5 USC SECTION 552(b)
(4) AND 5 USC SECTION 552(b)(7)(F)

SECURITY-RELATED INFORMATION
WITHHELD UNDER 5 USC SECTION 552(b)
(4) AND 5 USC SECTION 552(b)(7)(F)

SECURITY-RELATED INFORMATION WITHHELD UNDER 5 USC SECTION 552(b)
(4) AND 5 USC SECTION 552(b)(7)(F)

SECURITY-RELATED INFORMATION
WITHHELD UNDER 5 USC SECTION 552(b)
(4) AND 5 USC SECTION 552(b)(7)(F)

SECURITY-RELATED INFORMATION WITHHELD UNDER 5 USC SECTION 552(b)
(4) AND 5 USC SECTION 552(b)(7)(F)