





SECURITY-RELATED INFORMATION WITHHELD UNDER 5 USC SECTION 552(b)  
(4) AND 5 USC SECTION 552(b)(7)(F)



SECURITY-RELATED INFORMATION WITHHELD UNDER 5 USC SECTION 552(b)  
(4) AND 5 USC SECTION 552(b)(7)(F)



SECURITY-RELATED INFORMATION WITHHELD UNDER 5 USC SECTION 552(b)  
(4) AND 5 USC SECTION 552(b)(7)(F)

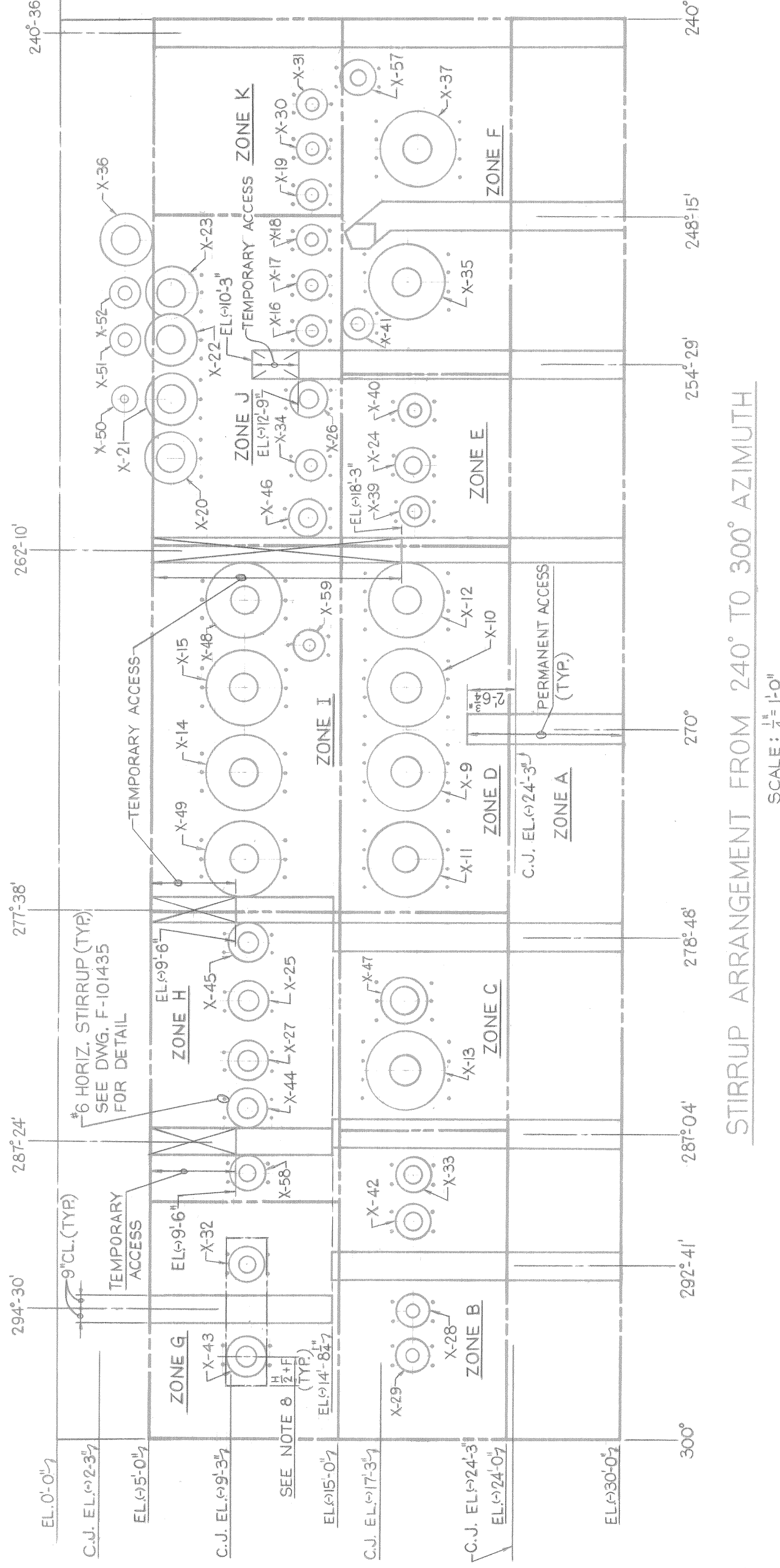




## WALL REINFORCEMENT AT EQUIPMENT HATCH

ELEVATION  
3/16" = 1'-0"

STIRRUP ANCHOR PLATE SCHEDULE (UNIT <sup>3</sup> )					
BAR SIZE	TO SERIES NO.	CADWELD ANCHOR PLATE SIZE	CADWELD ANCHOR PLATE REQ'D	TEST ASSEMBLIES REQ'D	
#6	RBB-692-JA <sup>1</sup>	1 <sup>1</sup> / <sub>2</sub> x 3" x 3"	90	7	
#8	RBB-8101-JA <sup>2</sup>	3 <sup>3</sup> / <sub>4</sub> x 3" x 5"	540	40	
#10	RBB-1092-JA <sup>3</sup>	1 <sup>1</sup> / <sub>2</sub> x 4" x 6"	—	—	
#11	RBB-11101-JA <sup>4</sup>	1 <sup>1</sup> / <sub>2</sub> x 4 <sup>1</sup> / <sub>2</sub> x 7"	90	7	



# DIAGONAL REINFORCEMENT AT EQUIPMENT HATCH

ELEVATION

TABLE OF INCLINED SHEAR REINFORCING			
ZONE	ELEV. TO ELEV.	AZIMUTH TO AZIMUTH	TOTAL AREA OF REINF. REQ'D.
A	EL+930' TO EL+924'	240° TO 300°	2.40 TO IN. <sup>2</sup>
B	EL+924' TO EL+915'	287° TO 300°	85.85 IN. <sup>2</sup>
C		277°45' TO 287°	61.0 IN. <sup>2</sup>
D		262°15' TO 277°45'	192.38 IN. <sup>2</sup>
E		255° TO 262°15'	47.87 IN. <sup>2</sup>
F		240° TO 255°	99.08 IN. <sup>2</sup>
G	EL+915' TO EL+905'	290° TO 300°	36.21 IN. <sup>2</sup>
H		277°45' TO 290°	44.39 IN. <sup>2</sup>
I		262°15' TO 277°45'	56.15 IN. <sup>2</sup>
J		248°15' TO 262°15'	50.70 IN. <sup>2</sup>
K		240° TO 248°15'	2.90 IN. <sup>2</sup>

# SECTION

- NOTES FOR PENETRATION AREA (240° TO 300°)**
1. SPACING OF INCLINED STIRRUPS MUST NOT EXCEED 18" AT THE OUTSIDE FACE OF WALL.
  2. ZONES OF INCLINED STIRRUPS INDICATE REQUIRED AREA OF REINFORCING AT OUTSIDE FACE OF WALL. USE #6 OR #10 INCLINED STIRRUPS IN ANY COMBINATION TO OBTAIN REQUIRED AREA FOR A GIVEN ZONE.
  3. PENETRATIONS ARE SHOWN AT MIDDLE SURFACE FACE OF WALL.
  4. ALL ADDITIONAL ACCESS OPENINGS REQUIRED BY FIELD ARE CONSIDERED TEMPORARY AND STIRRUPS MUST BE PLACED PRIOR TO CONCRETE PLACEMENT.
  5. WHEREVER ANCHOR PLATES ARE USED WITH STIRRUPS, PLATE SHOULD REST IN THE PLANE OF LAYER 1 OR 2 ON THE INSIDE AND LAYER 8 OR
- FOR GENERAL NOTES SEE DWG. NO. 9763-F-101436
2. PROVIDE #8 SPACER BARS AS REQUIRED BETWEEN LAYERS OF PARALLEL EQUIPMENT HATCH BENT BARS TO MAINTAIN 1" MINIMUM CLEARANCE BETWEEN LAYERS.
- REFERENCE DWGS.**
- |    |                 |                                            |
|----|-----------------|--------------------------------------------|
| 1. | 9763-F-101435 - | CONTAINMENT CONCRETE TYPICAL REINFORCING.  |
| 2. | 9763-F-101440 - | EQUIPMENT HATCH REINF. SHEET 1.            |
| 3. | 9763-F-101495 - | CONTAINMENT LINER-VERTICAL WALL OF PGS. 4. |
| 4. | 9763-F-101436 - | PENETRATIONS.                              |
| 5. | 9763-F-101497 - | CONTAINMENT LINER-PENETRATIONS SCHEDULE.   |

REFERENCE DWGS.

- |                                                                                                                          |                                                      |
|--------------------------------------------------------------------------------------------------------------------------|------------------------------------------------------|
| AND ACCESS OPENINGS ARE SHOWN AT OUTSIDE FACE OF WALL.                                                                   | 1. 9763-F-101435 - CONFINEMENT CONCRETE              |
| ALL ADDITIONAL ACCESS OPENINGS REQUIRED                                                                                  | 2. 9763-F-101440 - EQUIPMENT HATCH REINFORCING       |
| STRIPS ARE CONSIDERED TEMPORARY AND STRIPS MUST BE PLACED PRIOR TO CONCRETE PLACEMENT.                                   | 3. 9763-F-101436 - CONFINEMENT LINER-VERTICAL WALL   |
| WHEREVER ANCHOR PLATES ARE USED WITH STRIPS, PLATE SHOULD REST IN THE PLANE OF LAYER 1 OR 2 ON THE INSIDE AND LAYER 6 OR | 4. 9763-F-101436 - CONFINEMENT LINER-HORIZONTAL WALL |
|                                                                                                                          | 5. 9763-F-101437 - CONFINEMENT LINER - PENETRATIONS  |
|                                                                                                                          | SCHEDULE.                                            |

SKETCHED SHOWING BAR SIZE AND LOCATION (BY VISUAL INSPECTION) AND SUBMITTED TO THE RESIDENT CONSTRUCTION ENGINEER FOR APPROVAL PRIOR TO CONCRETE PLACEMENT.

7. CONSTRUCTION MANAGERS SHALL BE NOTIFIED WHEN STIRRUPS ARE IN PLACE, IN ORDER THAT A U.E. & C. FIELD ENGINEER MAY HAVE THE OPTION OF INSPECTING THE DISTRIBUTION.

PENETRATIONS	ELEV. TO ELEV. (APPROXIMATE)	AREA REQUIRED* (UNIFORMLY DISTR.)
X-29 TO X-33	©19'-0" TO ©17'-11"	13.85 IN. <sup>2</sup>
X-13 TO X-47	©20'-7" TO ©16'-5"	20.90 IN. <sup>2</sup>
X-11 TO X-12	©20'-7" TO ©16'-5"	48.94 IN. <sup>2</sup>
X-39 TO X-40	©19'-0" TO ©17'-11"	8.94 IN. <sup>2</sup>
X-35 TO X-37	©21'-0" TO ©16'-6"	35.00 IN. <sup>2</sup>
X-43 TO X-32	©11'-2" TO ©9'-1"	4.69 IN. <sup>2</sup>
X-58 TO X-45	©11'-2" TO ©9'-1"	9.07 IN. <sup>2</sup>
X-49 TO X-48	©12'-0" TO ©8'-0"	23.19 IN. <sup>2</sup>
X-46 TO X-18	©14'-4" TO ©12'-3"	10.52 IN. <sup>2</sup>
X-20 TO X-23	©7'-5" TO ©5'-0"	8.95 IN. <sup>2</sup>
X-19 TO X-31	©14'-3" TO ©12'-6"	3.76 IN. <sup>2</sup>

SKETCHED SHOWING BAR SIZE AND LOCATION (BY VISUAL INSPECTION) AND SUBMITTED TO THE RESIDENT CONSTRUCTION ENGINEER FOR APPROVAL PRIOR TO CONCRETE PLACEMENT.

7. CONSTRUCTION MANAGERS SHALL BE NOTIFIED WHEN STIRRUPS ARE IN PLACE, IN ORDER THAT A U.E. & C. FIELD ENGINEER MAY HAVE THE OPTION OF INSPECTING THE DISTRIBUTION.

## CONTAINMENT CONCRETE

EQUIPMENT HATCH REF. - SHEET 2

**Seabrook Station**  
PUBLIC SERVICE CO. OF NEW HAMPSHIRE  
**Be** united engineers a construction inc.

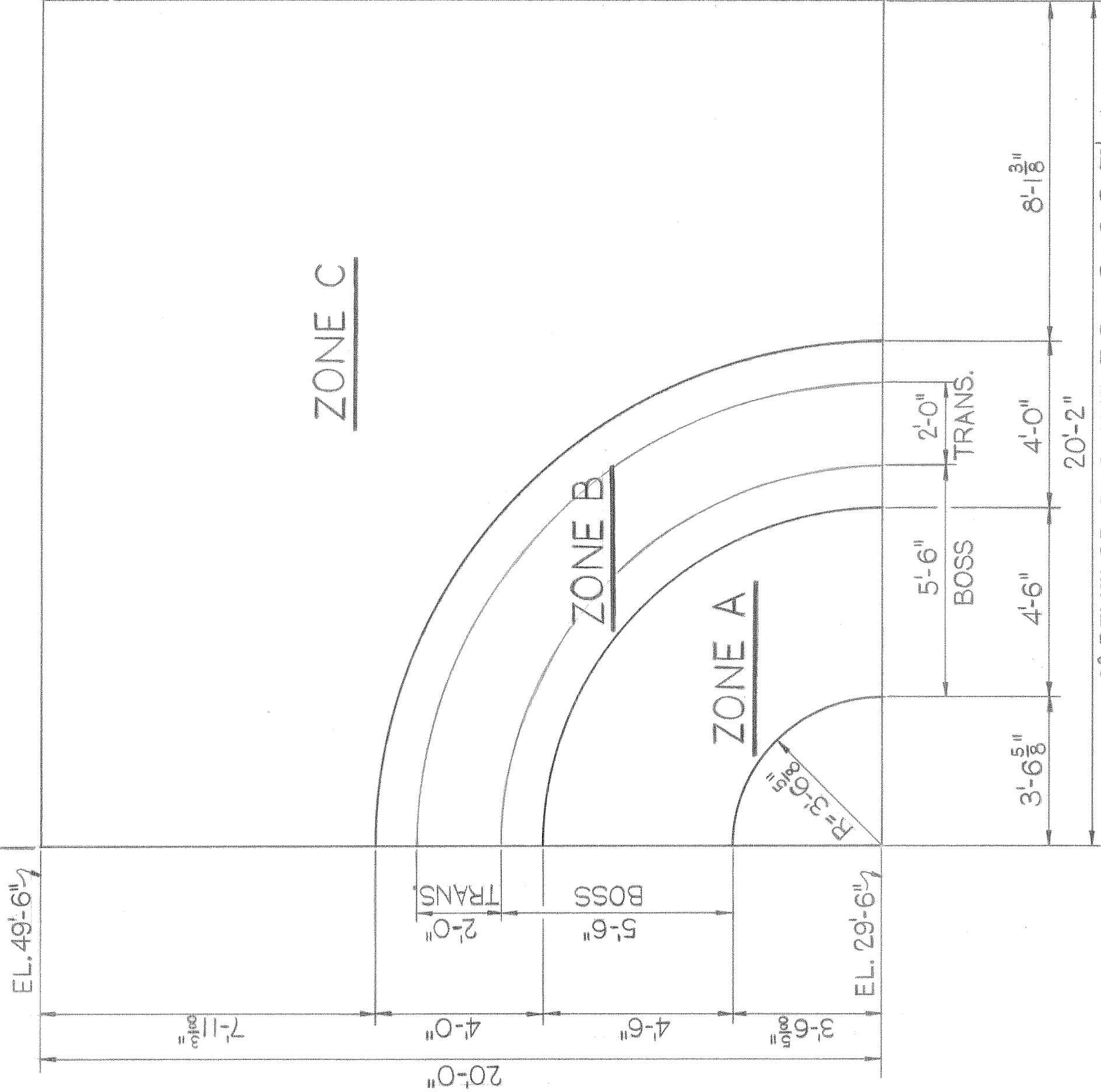
UNITC 1 AND 2 0703 F 404174







SYMMETRICAL ABOUT PERSONNEL AIR LOCK 12:0'CLOCK

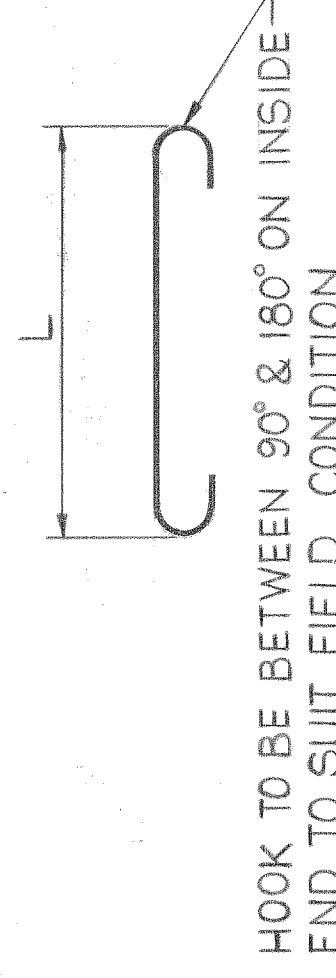


TYPICAL STIRRUP ARRANGEMENT FOR QUARTER SEGMENT  
(LOOKING FROM OUTSIDE)  
SCALE: 1/8" = 1'-0"

TABLE OF TRANSVERSE SHEAR REINFORCEMENT FOR QUARTER SEGMENT				
REGION	ZONE	SIZE OF SPACING TOTAL STIRRUP R X H	NO. LENGTH (L)	AREA FT. <sup>2</sup>
BOSS	A	18" X 18"	18	5'-3 1/4"
BOSS, TRANS. & SHELL	B	12" X 9"	84	VARIES
SHELL	C	21" X 18"	110	3'-6 1/4"
				289.25

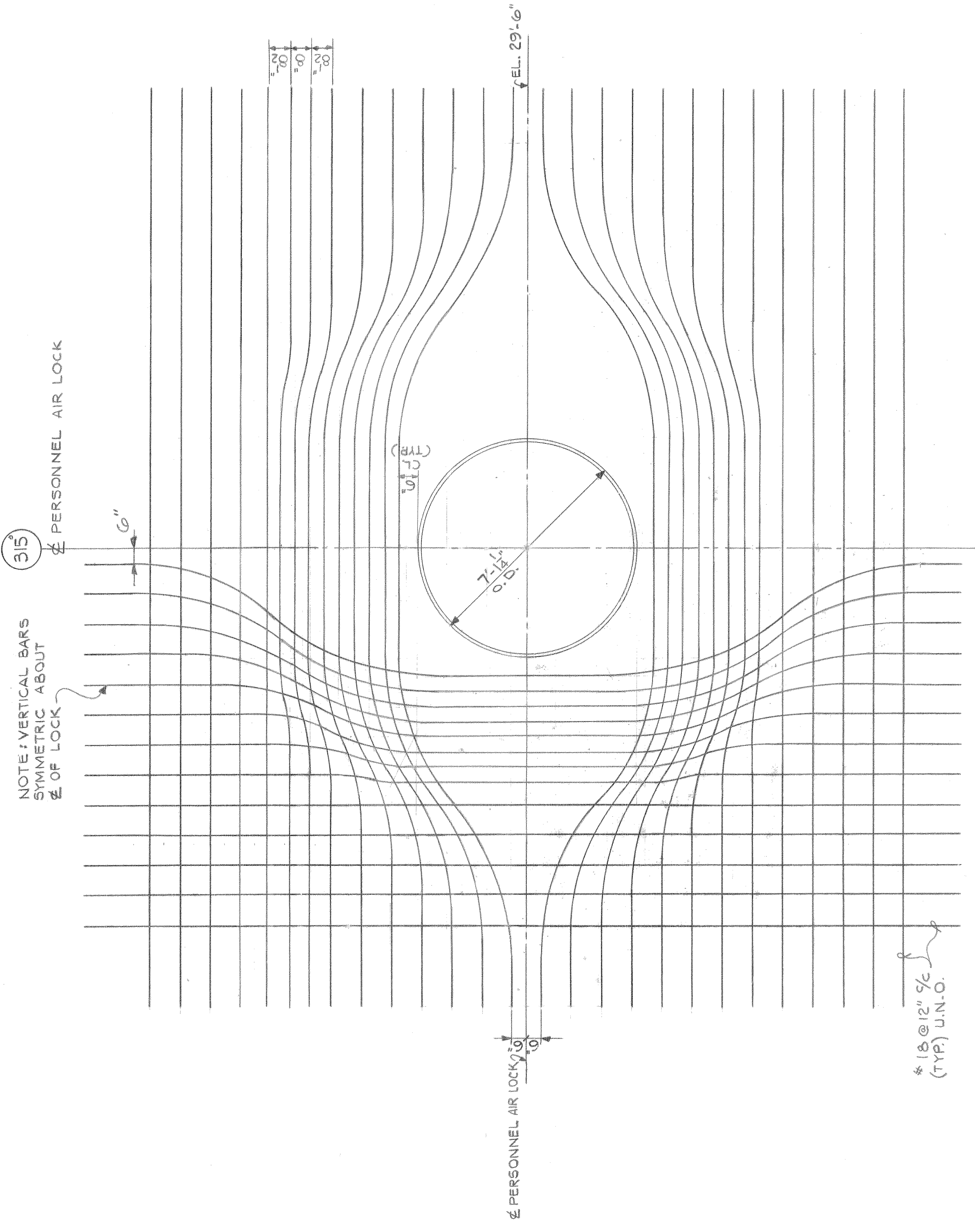
TABLE OF SUBSTITUTE ADDITIONAL #5 TRANSVERSE SHEAR REINFORCEMENT FOR ALTERNATE USE			
REGION	ZONE	SIZE OF TOTAL STIRRUP NO.	REMARKS
BOSS	A	#5 4	END HOOKS ARE IN DIFFERENT PLANE
BOSS, TRANS. & SHELL	B	#5 13	VARIES
SHELL	C	#5 17	3'-6"

R=RADIAL  
H=HOOP

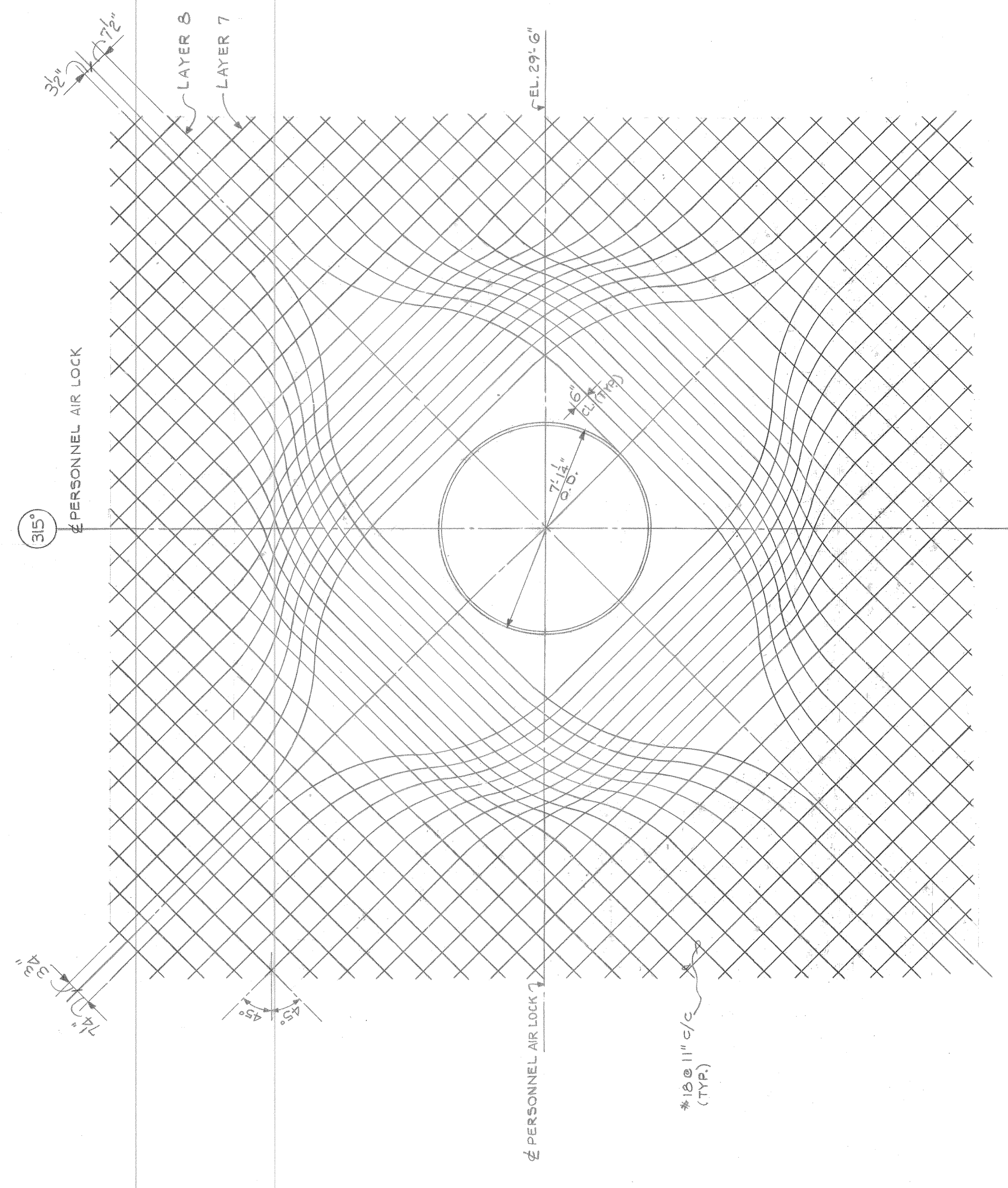


NOTE:  
WHENEVER #6 STIRRUPS DO NOT FIT, SUBSTITUTE THREE (3) OF #5 STIRRUPS FOR EVERY TWO (2) OF #6 STIRRUPS.  
SUBSTITUTION OF #3 & #4 STIRRUPS IS ALSO PERMITTED PROVIDED THE TOTAL REQUIRED AREA IS FURNISHED IN EACH ZONE. BUNDLED (2) STIRRUPS MAY BE USED.

- NOTES:
- FOR GENERAL NOTES AND REFERENCE DWGS. SEE DWG. NO. 9763-F-10435.
  - WORK THIS DWG. WITH DWG. NO. 9763-F-10434 & 10443.
  - TOTAL NUMBER OF STIRRUPS MUST BE PLACED IN A GIVEN ZONE AS SHOWN IN THE TABLE ON THIS DWG.
  - STIRRUP SPACING IS PROVIDED IN RADIAL AND HOOP PATTERN. STIRRUPS MAY BE PLACED IN ORTHOGONAL PATTERN AND SPACING MAY BE INCREASED OR DECREASED BY A MAXIMUM OF HALF THE STIRRUP SPACING FOR A GIVEN ZONE IF REQUIRED FOR PLACEMENT.
  - HEAT NUMBERS (IDENTIFICATION TAGS) ON STIRRUP BUNDLES SHALL BE MAINTAINED WITH THE BATCH OF STIRRUPS FOR FUTURE IDENTIFICATION FOR USE IN UNIT #2.
  - ALL STIRRUPS IN BOSS AND TRANSITION ZONE MUST HOOK AROUND EXTREME OUTSIDE LAYER AND IN SHELL AROUND LAYER #7.



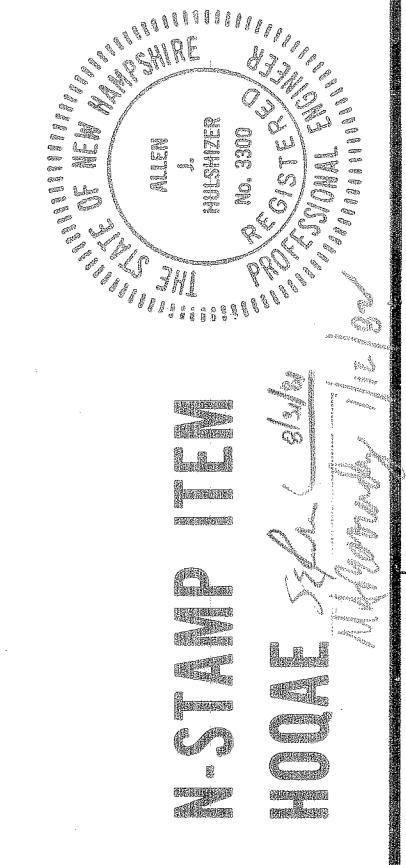
ELEVATION @ PERSONNEL AIR LOCK  
3/8" = 1'-0"



ELEVATION  
DIAGONAL REINFORCEMENT @ PERSONNEL AIR LOCK  
3/8" = 1'-0"

NO.	REVISION	DATE	DESCRIPTION	BY	CHKD.	DATE
1	REVISED	1/1/78	REVISED	WFL	WFL	1/1/78
2	REVISED	1/1/78	REVISED	WFL	WFL	1/1/78
3	REVISED	1/1/78	REVISED	WFL	WFL	1/1/78
4	REVISED	1/1/78	REVISED	WFL	WFL	1/1/78

CONTAINMENT  
CONCRETE  
PERSONNEL AIR LOCK REINF.- SHEET 1  
PUBLIC SERVICE CO. OF NEW HAMPSHIRE  
SEABROOK STATION  
united engineers, Inc.  
9763-F-101442



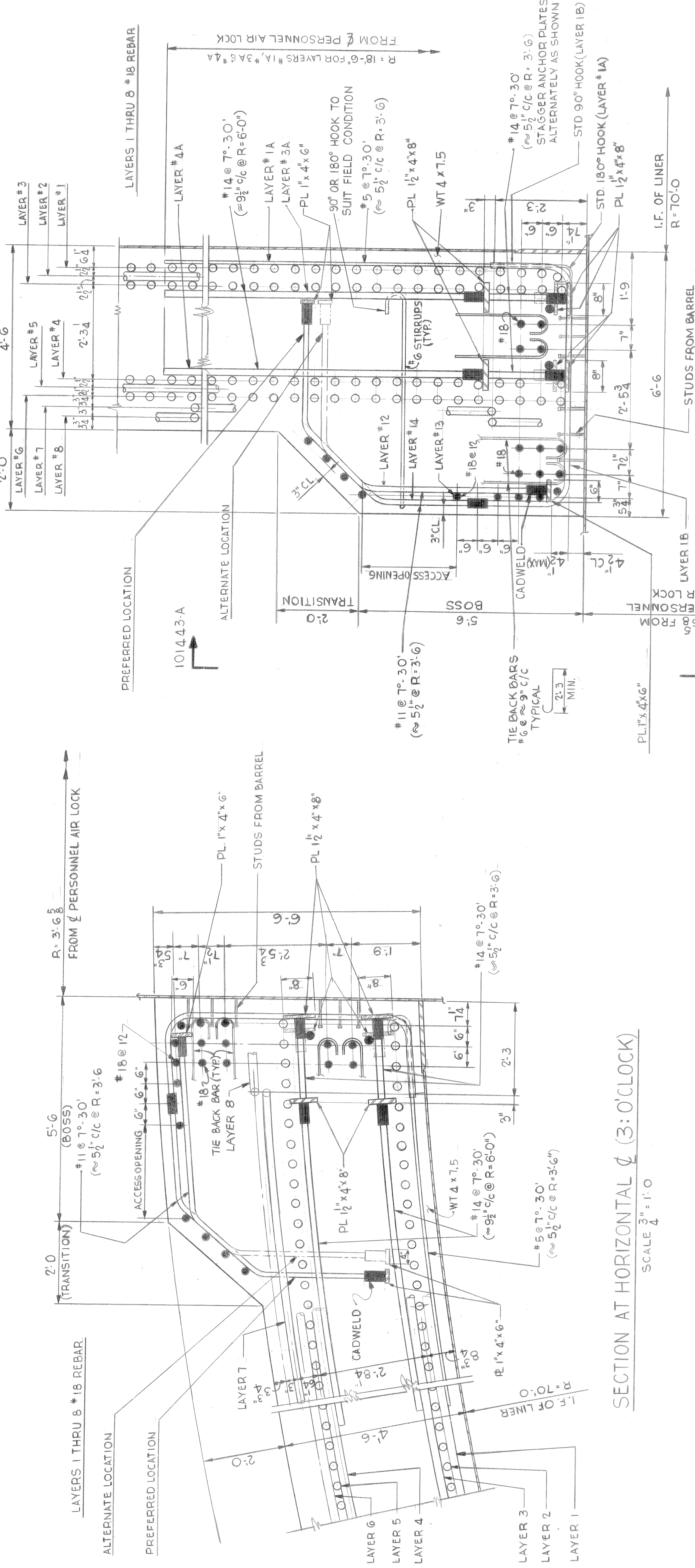


ANCHOR PLATE SCHEDULE				
PIECE MARKS (*)	CADWELD TO BAR SIZE	ANCHOR PLATE SIZE	TOTAL NO. FOR UNIT #1	TOTAL NO. FOR UNIT #2
A6/J, A7/I	#11	RBB-1101JA 1'x4'x6"	144	144
A205/J, A5/I	#14	RBB-1401JA 1 1/2'x4'x8"	192	192

(\*) PIECES ARE DIFFERENT ONLY FOR ORIENTATION OF TAP HOLES. FOR DETAILS AND QUANTITIES SEE ALL DWGS. (UE&C FP #13610 THRU 13618 & 13634 THRU 13640).

NOTES

- FOR GENERAL NOTES AND LIST OF REFERENCE DWGS. SEE DWG. NO. 9763-F-101435
- WDS. 1101 & 1401, W/TH DWGS. NO. 9763-F-101442
- HOOP BAGS TO BE FABRICATED WITH THE LARGEST HOOP LENGTH PRACTICAL FOR SHIPMENT. HOOP BAR CADWELD SPLICES TO BE STAGGERED 12" MIN. FROM THE ADJACENT CADWELD SPLICE. CADWELD SPLICES TO BE STAGGERED BETWEEN RADIAL BARS WHERE APPLICABLE.
- LAYER #3A, 7A, 10 & 14 SHOULD BE BENT WITH A CONSTANT RADIUS IN A GROUP OF 45°. ONE SEGMENT OF 45° SHOULD BE SYMMETRICAL AROUND 12 O'CLOCK IN THE HOOP DIRECTION.
- FOR ANCHOR PLATE DETAIL SEE DWG. NO. 9763-F-101440
- FOR TRANSVERSE SHEAR BARS SEE DWG. NO. F-101442
- SEE FCA 01226974 FOR THE AS BUILT LOCATION OF THE REBARS AND ANCHORAGE PLATES.



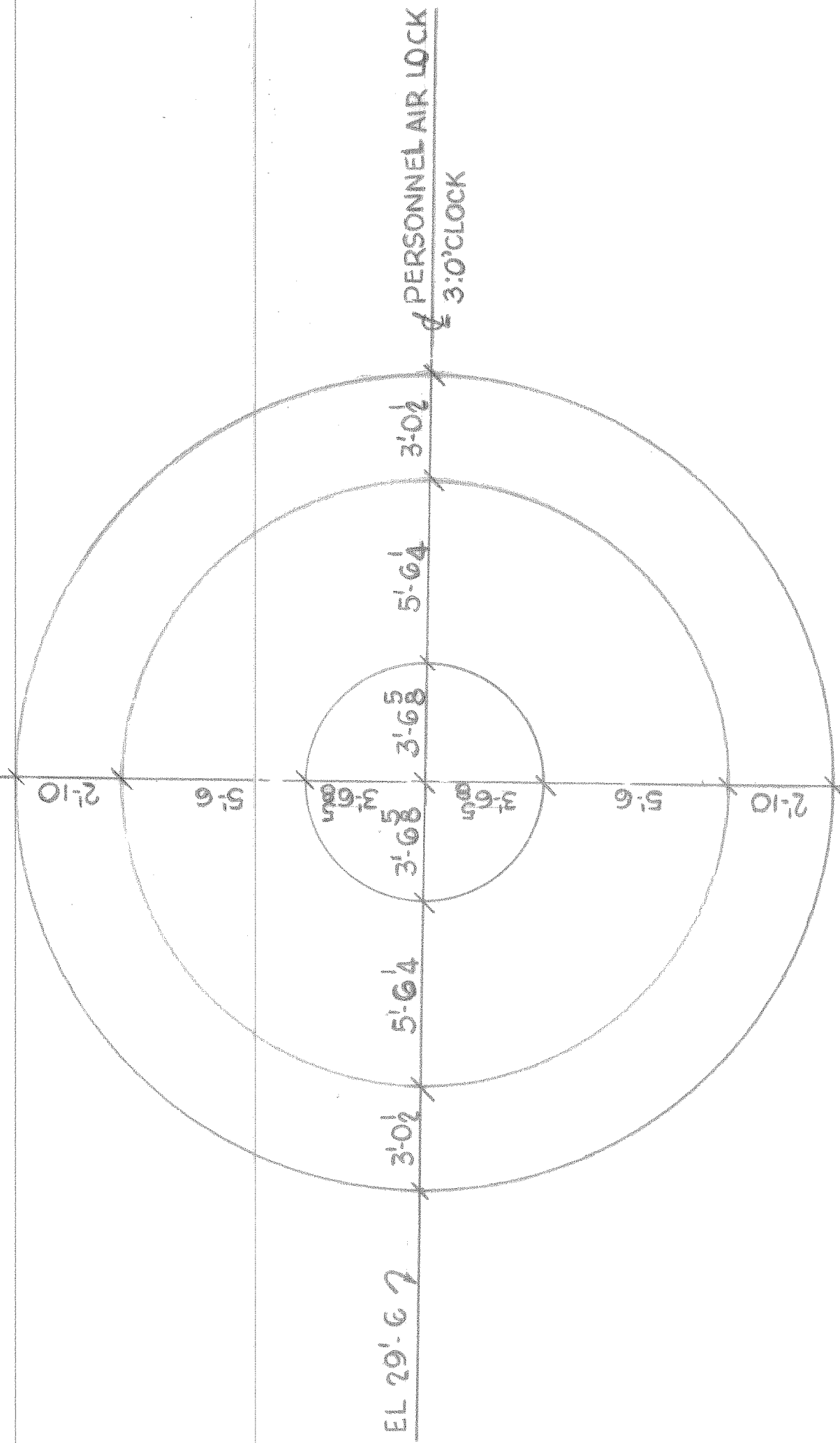
SECTION AT VERTICAL Ø 12:0'CLOCK

SCALE 3/4" = 1'-0"

SECTION AT HORIZONTAL Ø (3:0'CLOCK)

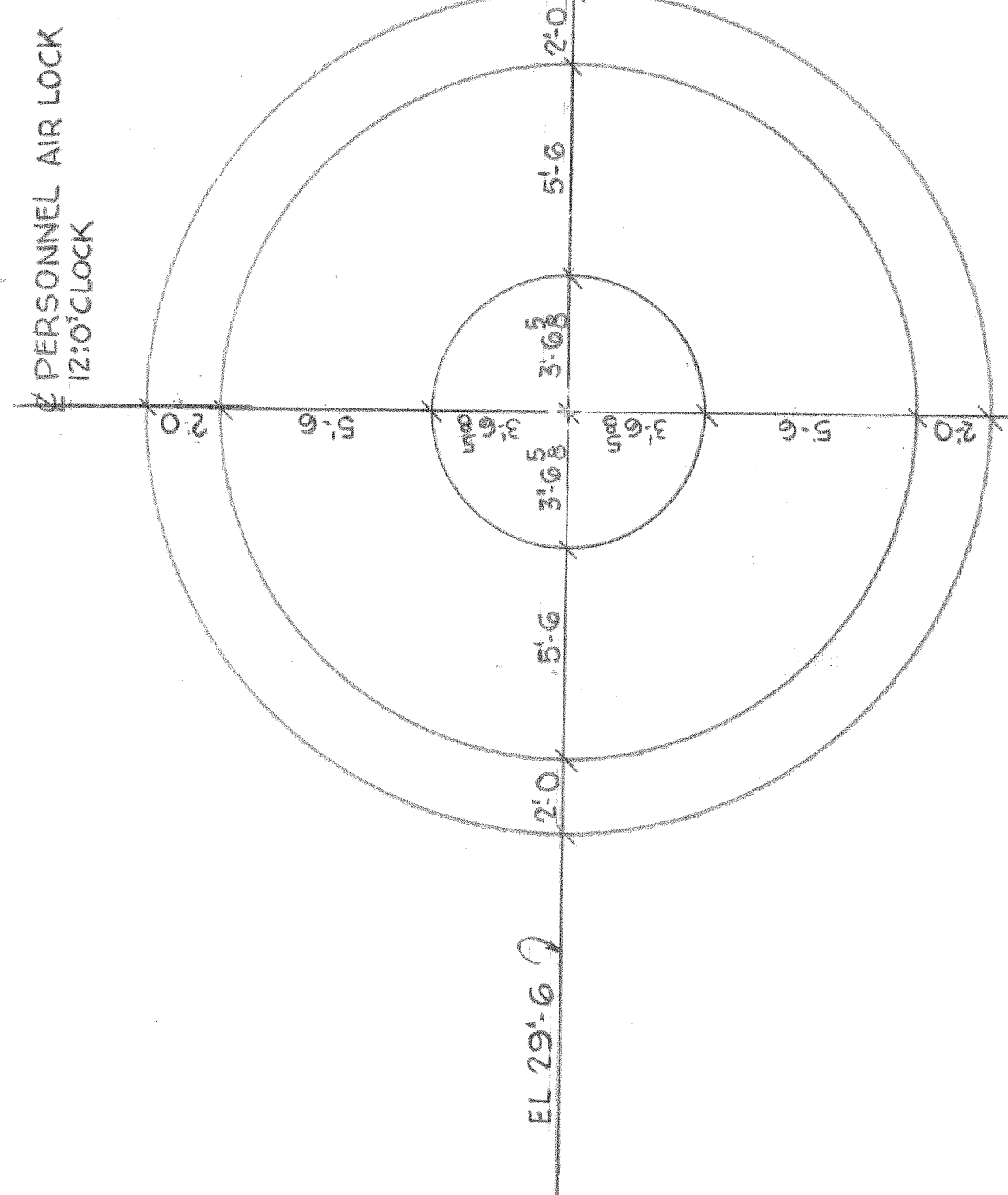
SCALE 3/4" = 1'-0"

SECTION AT HORIZONTAL Ø (3:0'CLOCK)



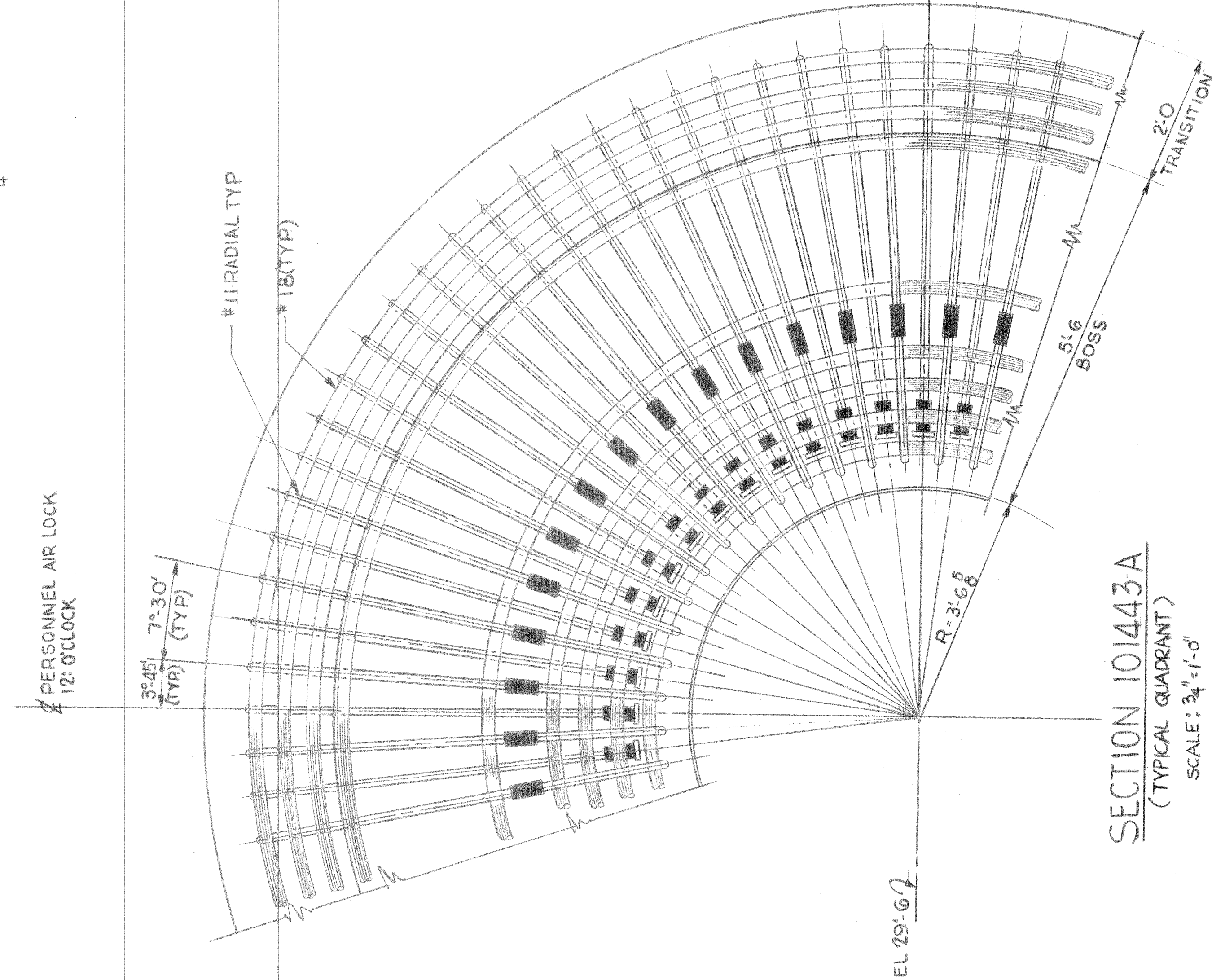
DEVELOPED ELEVATION (LOOKING FROM OUTSIDE)

SCALE 1/4" = 1'-0"



PROJECTED ELEVATION (LOOKING FROM OUTSIDE)

SCALE 1/4" = 1'-0"



SECTION 101443A (TYPICAL QUADRANT)

SCALE 3/4" = 1'-0"

NO.	DATE	DESCRIPTION	BY	CHK	DATE	DESCRIPTION	BY	CHK
5	11/14/74	REV'D. STIRRUP HOOK REF. TO FCA 01226974	AL	AL	11/14/74	REV'D. STIRRUP HOOK REF. TO FCA 01226974	AL	AL
4	10/25/74	REV'D. STIRRUP HOOK REF. TO FCA 01226974	AL	AL	10/25/74	REV'D. STIRRUP HOOK REF. TO FCA 01226974	AL	AL
3	10/25/74	REV'D. STIRRUP HOOK REF. TO FCA 01226974	AL	AL	10/25/74	REV'D. STIRRUP HOOK REF. TO FCA 01226974	AL	AL
2	10/25/74	REV'D. STIRRUP HOOK REF. TO FCA 01226974	AL	AL	10/25/74	REV'D. STIRRUP HOOK REF. TO FCA 01226974	AL	AL
1	10/25/74	REV'D. STIRRUP HOOK REF. TO FCA 01226974	AL	AL	10/25/74	REV'D. STIRRUP HOOK REF. TO FCA 01226974	AL	AL

N-STAMP ITEM

HOOAE

STATE REG. NEW HAMPSHIRE NO. 330.0

CONTAINMENT CONCRETE

PERSONNEL AIR LOCK REINF. - SHEET 2

PUBLIC SERVICE CO. OF NEW HAMPSHIRE

SEABROOK STATION

UNITED ENGINEERS

9763-F-101443

UNITS 1 & 2

1

AREA 017 CS





SECURITY-RELATED INFORMATION WITHHELD UNDER 5 USC SECTION 552(b)  
(4) AND 5 USC SECTION 552(b)(7)(F)