

Legend

Grid Cell

TCRA Investigation Boundary

Kriging

< 2

2 - 3

3 - 4

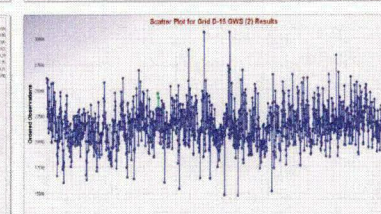
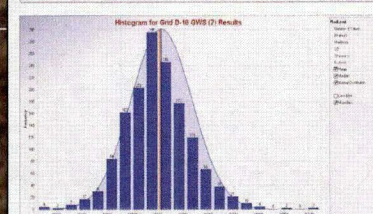
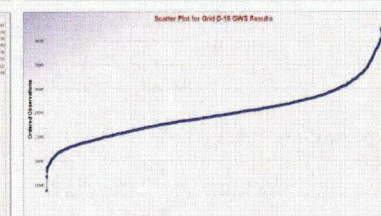
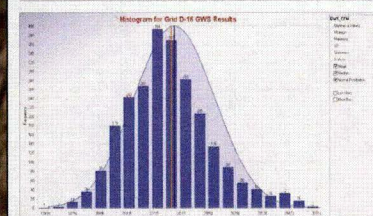
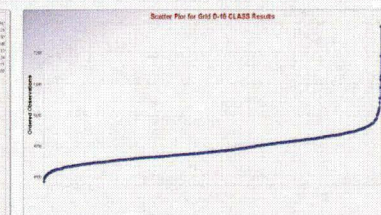
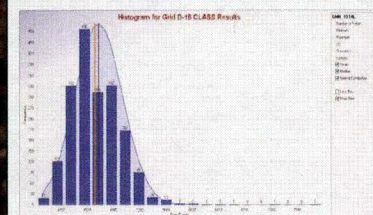
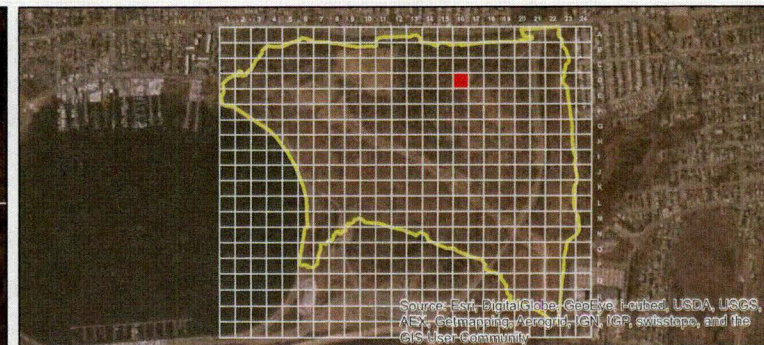
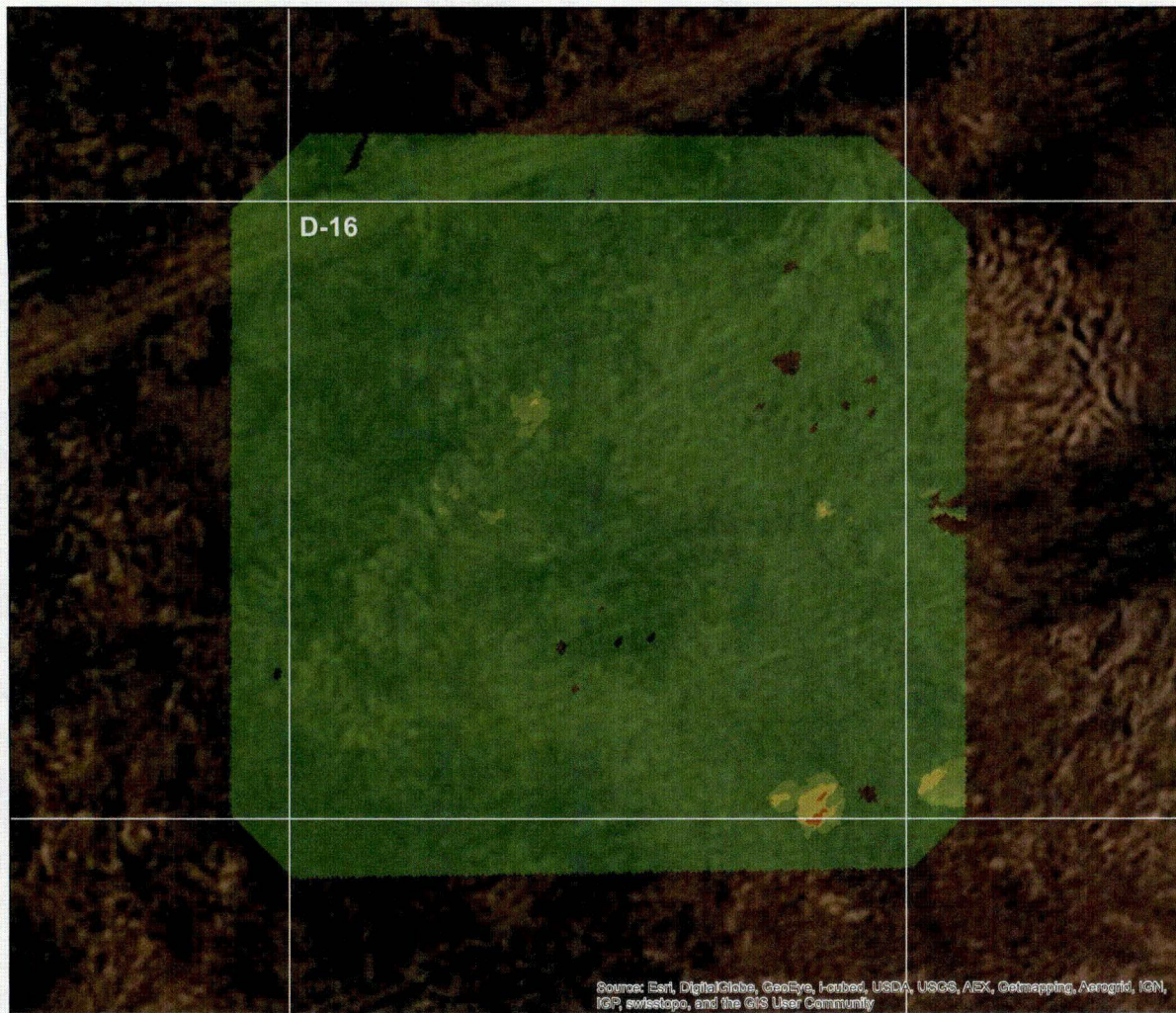
4 - 5

> 5



0 50 100 150 Feet

| | | |
|------------------------|-------------------------------------|-----------|
| | | |
| Grid Cell D-16 Kriging | | |
| DESIGNED BY | Great Kills Park, Staten Island, NY | Figure # |
| DRAWN BY | | |
| CHECKED BY | Contract No: W92BU-13-C-0010 | June 2014 |
| CG | | |



Legend

Grid Cell

TCRA Investigation Boundary

Kriging

< 2

2 - 3

3 - 4

4 - 5

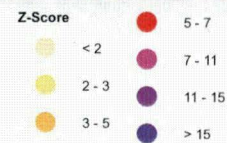
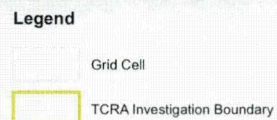
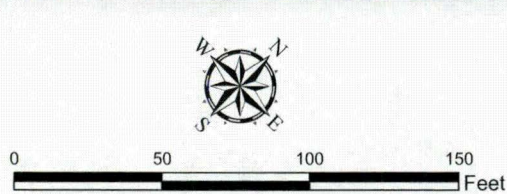
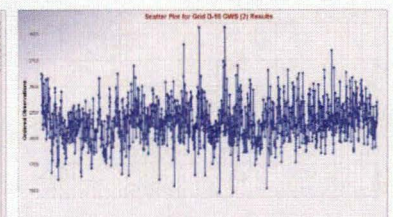
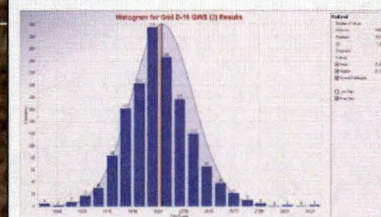
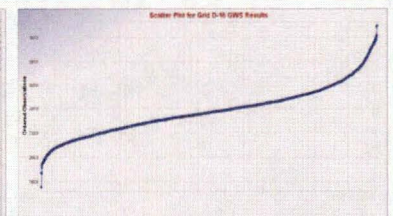
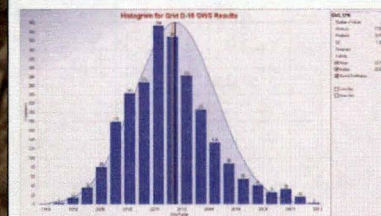
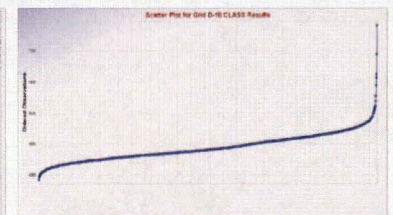
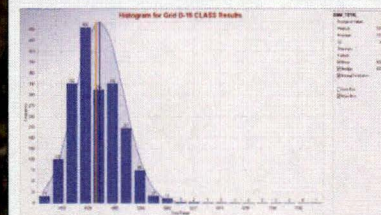
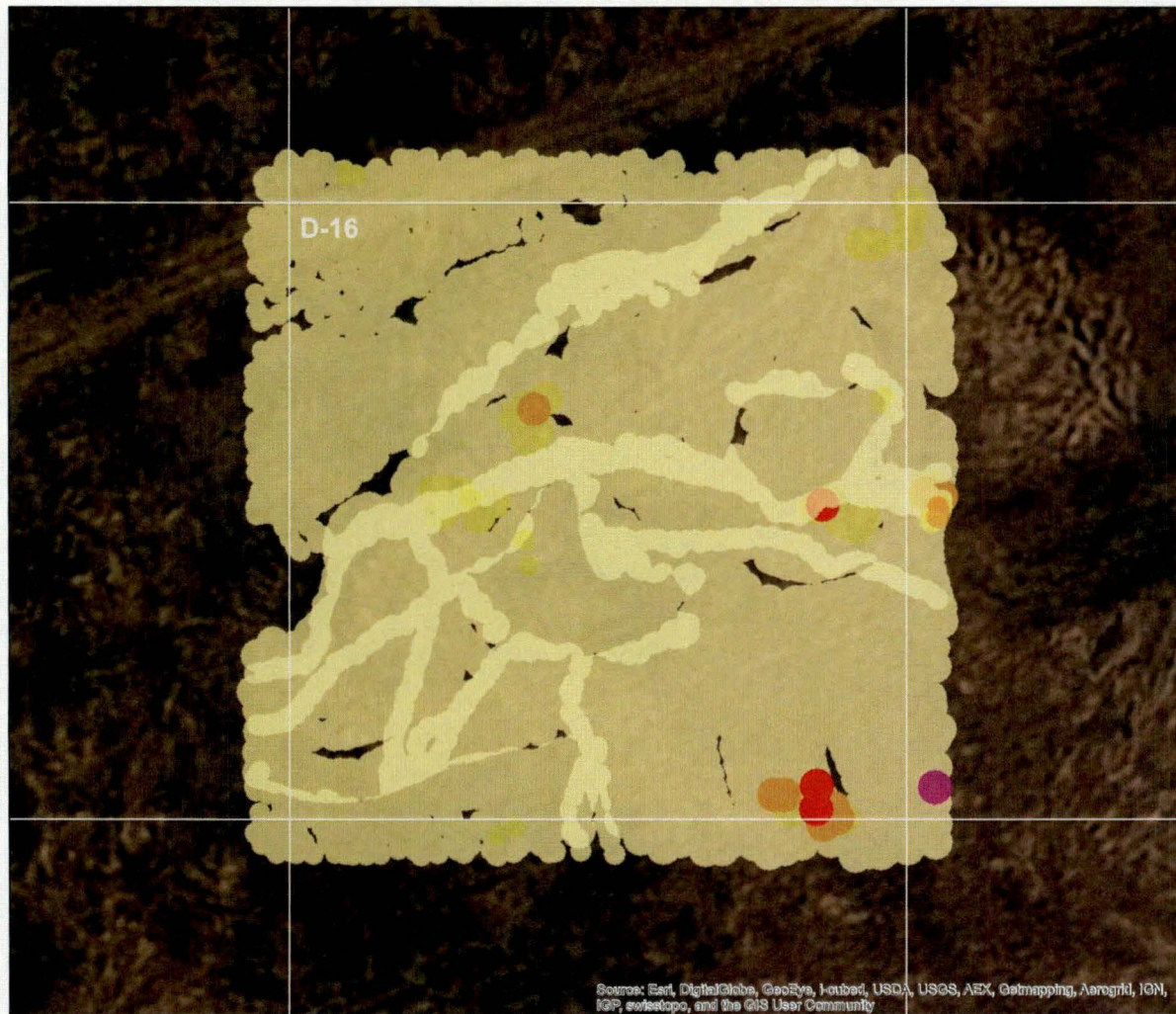
> 5





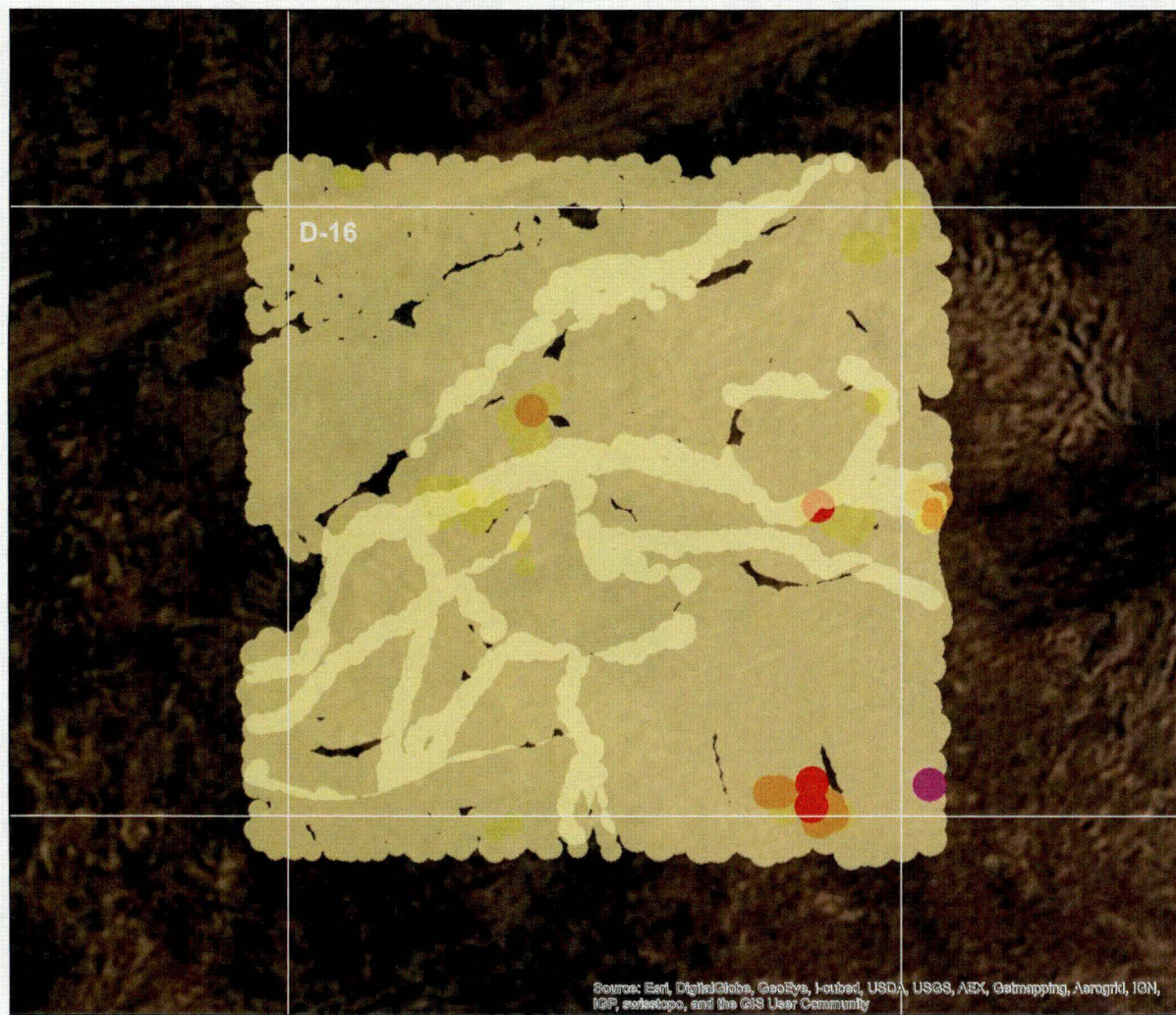
0 50 100 150 Feet

Grid Cell D-16 Kriging

| | | |
|-------------|-------------------------------------|----------|
| DESIGNED BY | Great Kills Park, Staten Island, NY | Figure # |
| DRAWN BY | | |
| CHECKED BY | Contract No: | June |
| CG | W92BU-13-C-0010 | 2014 |



| | | | | | | | |
|---|--|---|--|---|--|--|--|
|  | | TIDEWATER INC <small>DESIGNERS • CONSULTANTS • PROGRAM MANAGERS</small> | |  | | U.S Army Corps of Engineers Philadelphia District | |
| Grid Cell D-16 Z-Score | | | | | | | |
| DESIGNED BY | | Great Kills Park, Staten Island, NY | | | | Figure # | |
| JHD | | | | | | | |
| DRAWN BY | | | | | | | |
| JHD | | | | | | | |
| CHECKED BY | | Contract No: WS2BU-13-C-0010 | | | | June 2014 | |
| CG | | | | | | | |



Legend

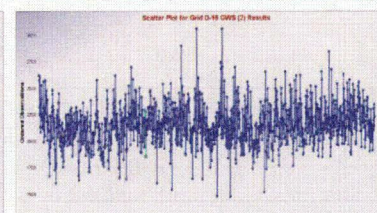
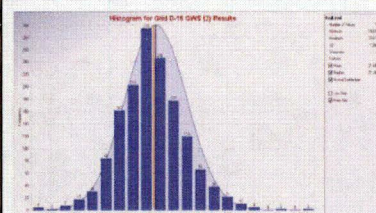
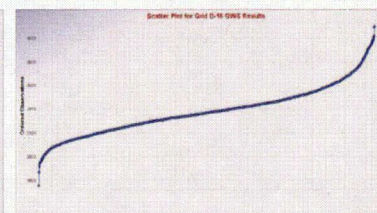
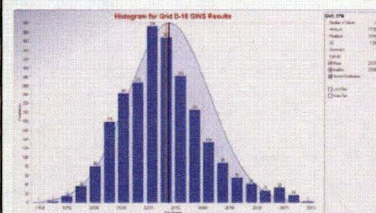
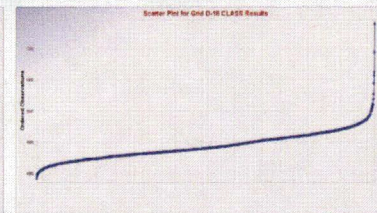
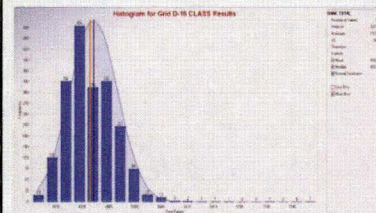
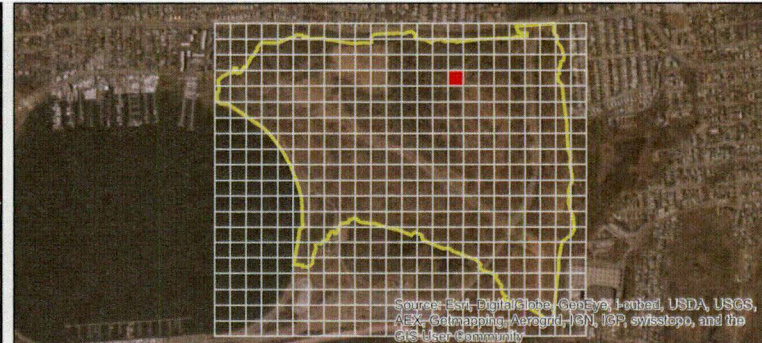
- Grid Cell
- TCRA Investigation Boundary

Z-Score

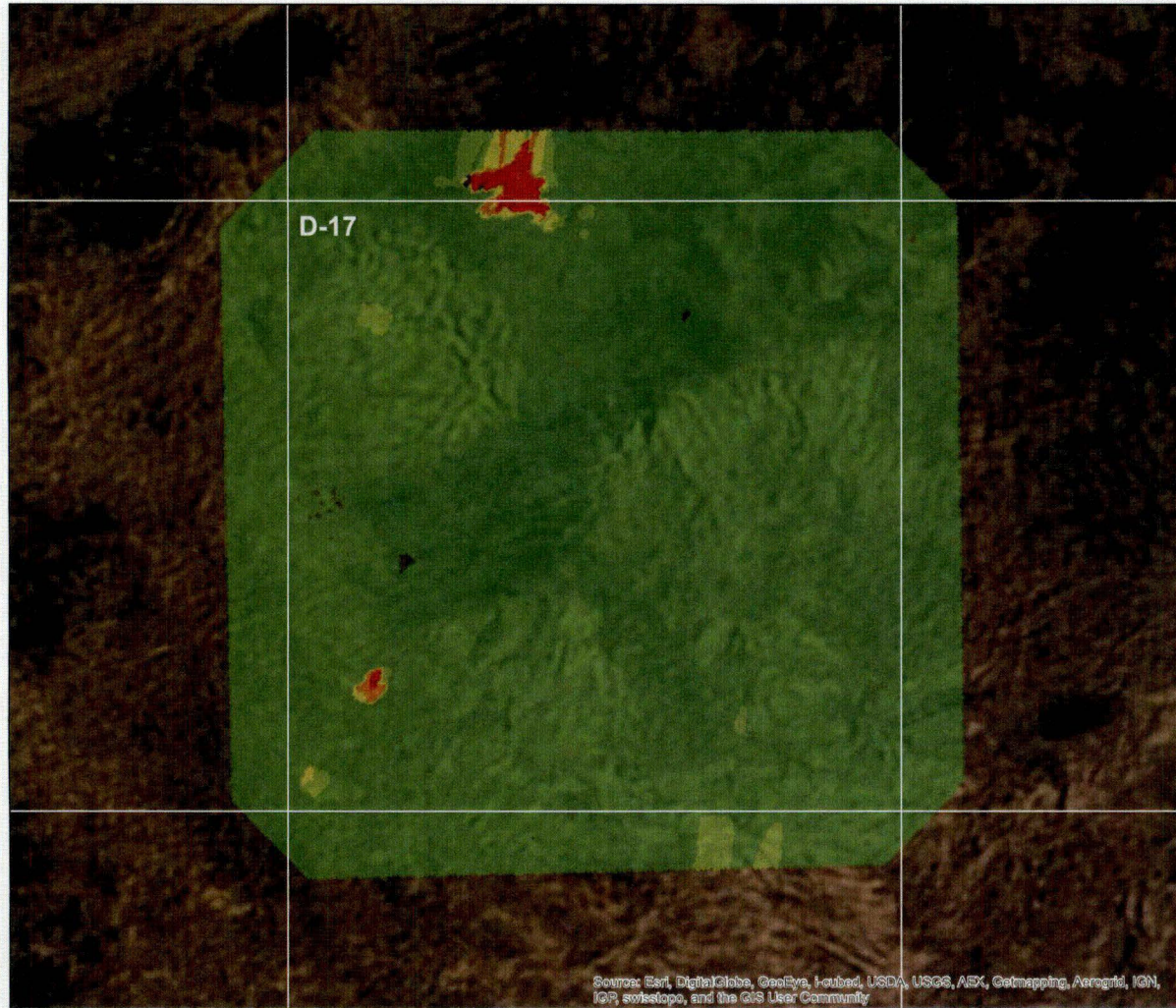
- < 2
- 2 - 3
- 3 - 5
- 5 - 7
- 7 - 11
- 11 - 15
- > 15



0 50 100 150 Feet



| | | |
|------------------------|-------------------------------------|-----------|
| | | |
| Grid Cell D-16 Z-Score | | |
| DESIGNED BY | Great Kills Park, Staten Island, NY | Figure # |
| DRAWN BY | | |
| CHECKED BY | Contract No: W92BU-13-C-0010 | June 2014 |



Sources: Esri, DigitalGlobe, GeoEye, i-cubed, USDA, USGS, AEX, Getmapping, Aerogrid, IGN, IGP, swisstopo, and the GIS User Community

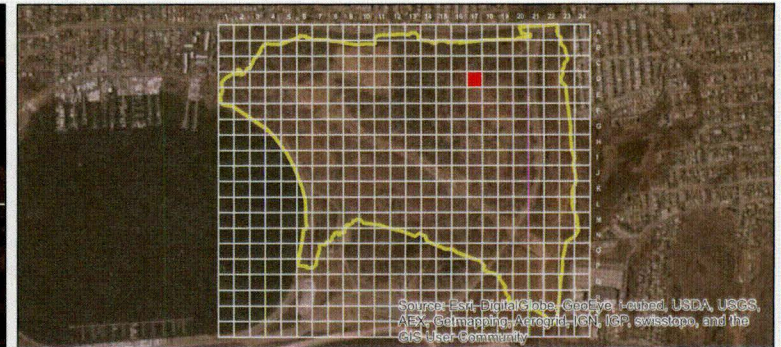


0 50 100 150 Feet

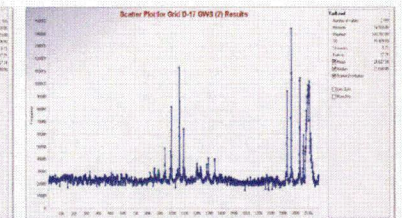
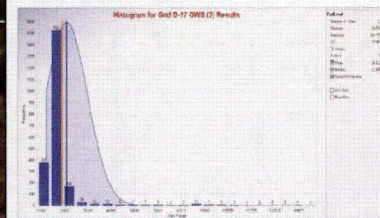
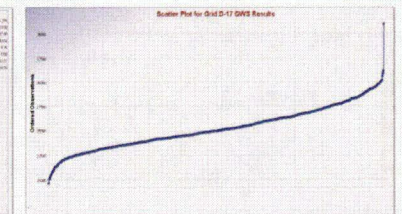
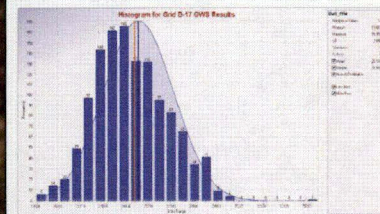
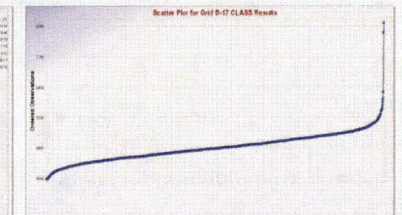
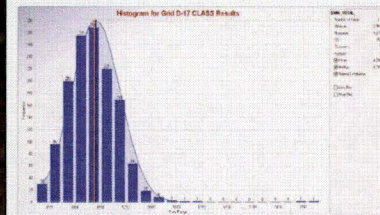
Legend


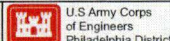
Grid Cell
TCRA Investigation Boundary

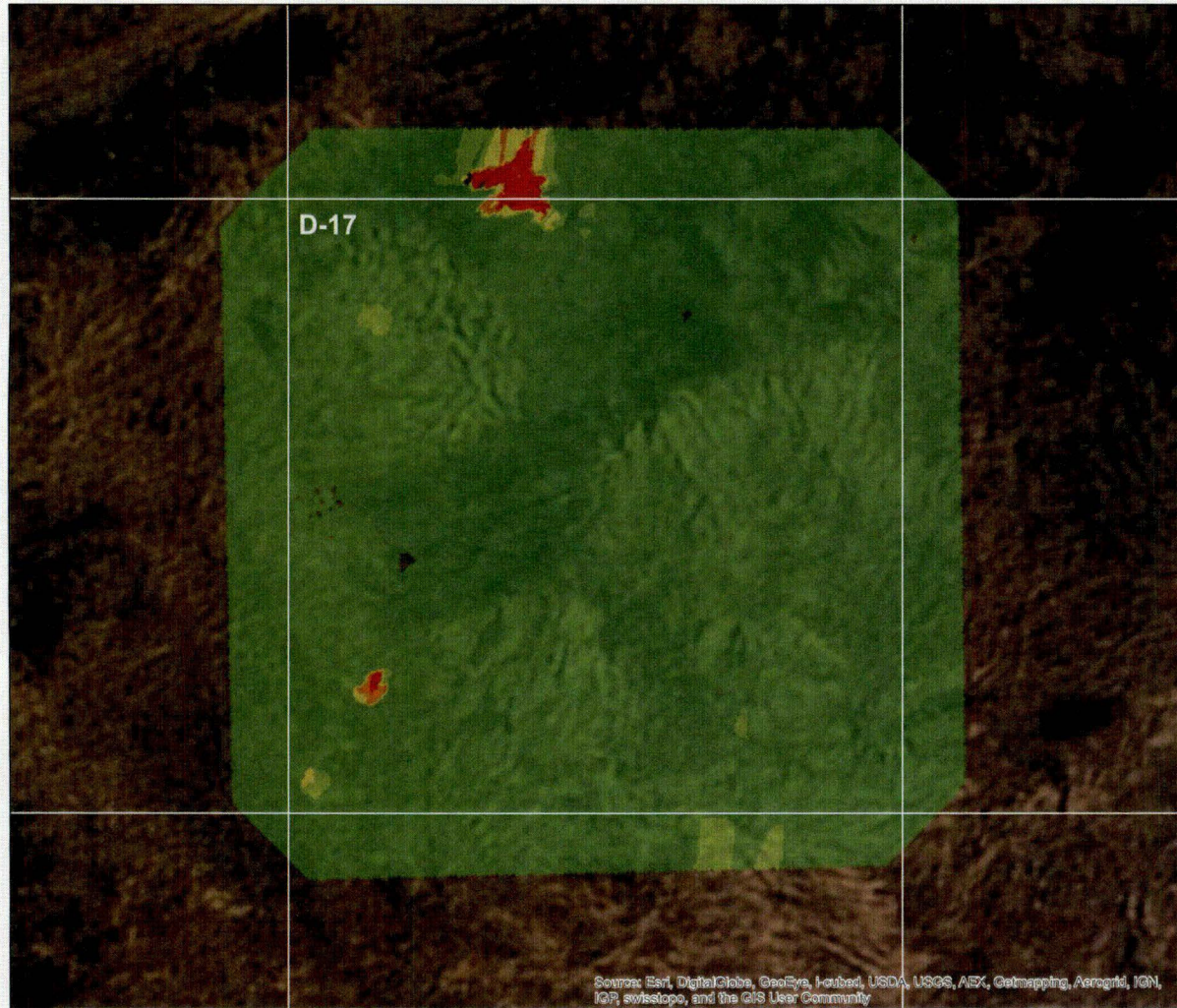
Kriging
 < 2
 2 - 3
 3 - 4
 4 - 5
 > 5



Sources: Esri, DigitalGlobe, GeoEye, i-cubed, USDA, USGS, AEX, Getmapping, Aerogrid, IGN, IGP, swisstopo, and the GIS User Community



| | | |
|---|--|----------|
|   | | |
| Grid Cell D-17 Kriging | | |
| DESIGNED BY | Great Kills Park, Staten Island, NY Contract No: W92BU-13-C-0010 | Figure # |
| DRAWN BY | | June |
| CHECKED BY | | 2014 |
| CG | | |

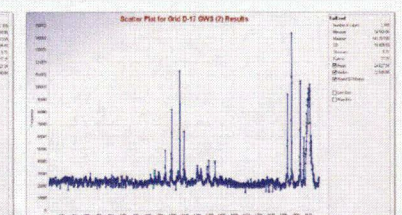
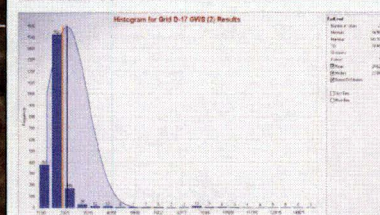
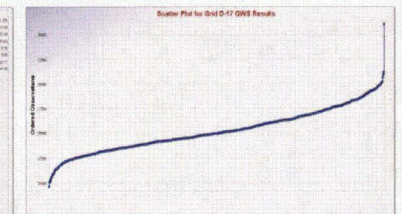
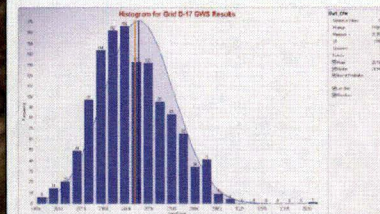
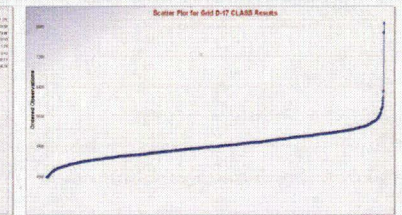
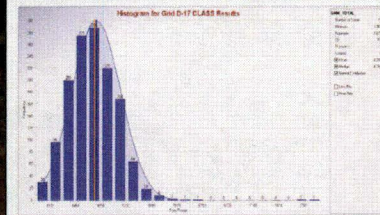
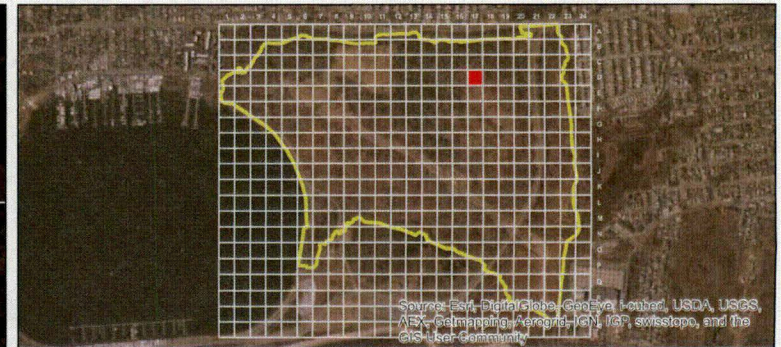


Legend

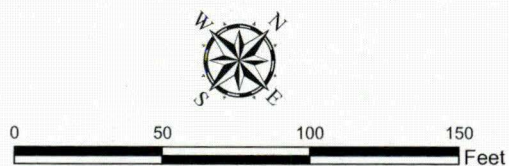
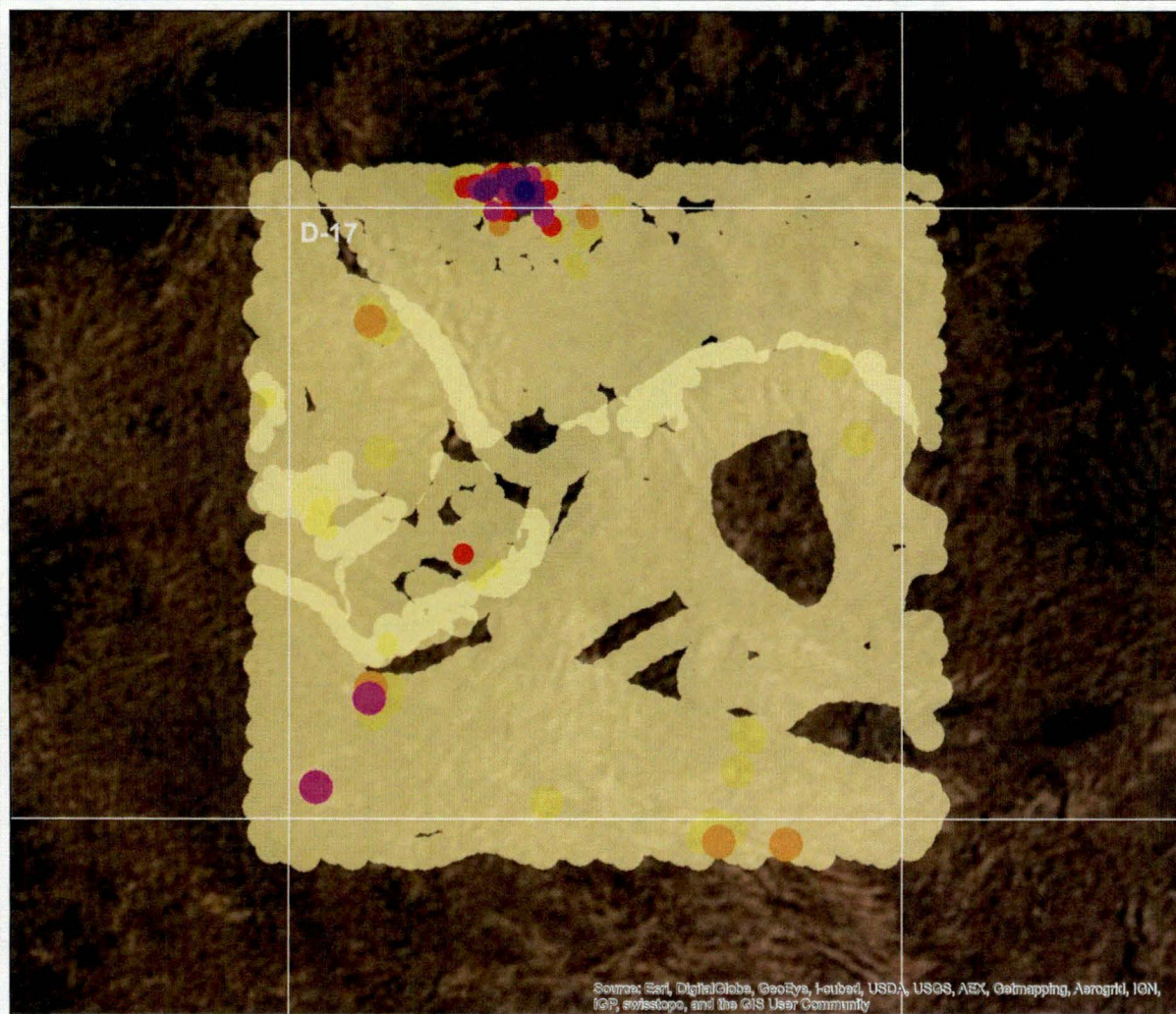
- Grid Cell
- TCRA Investigation Boundary

- Kriging**
- < 2
 - 2 - 3
 - 3 - 4
 - 4 - 5
 - > 5

0 50 100 150 Feet



| | |
|-------------------------------------|-----------|
| | |
| Grid Cell D-17 Kriging | |
| DESIGNED BY | JHG |
| DRAWN BY | JHG |
| CHECKED BY | CG |
| Great Kills Park, Staten Island, NY | |
| Contract No: W92BU-13-C-0010 | |
| Figure # | June 2014 |

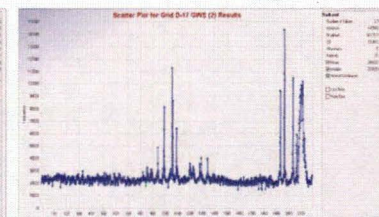
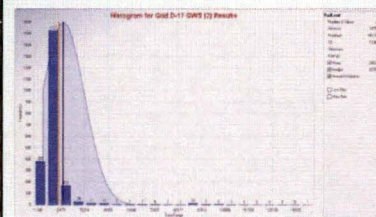
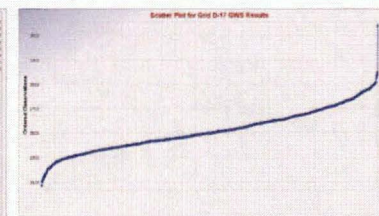
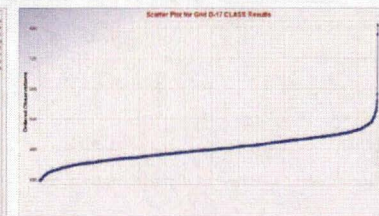
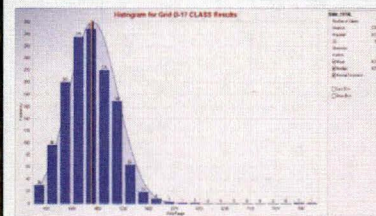
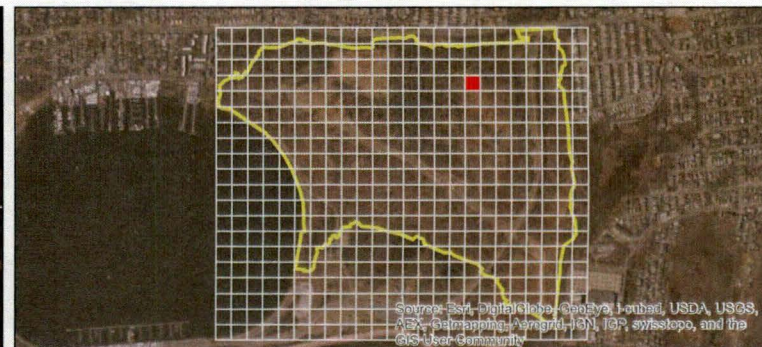




Legend

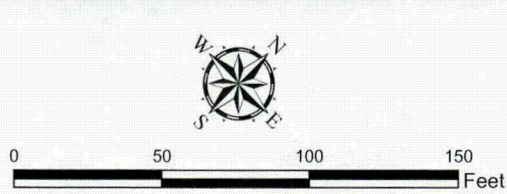
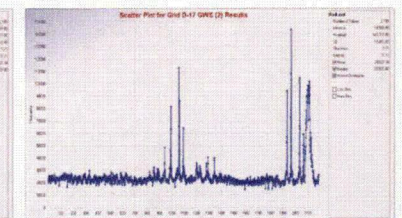
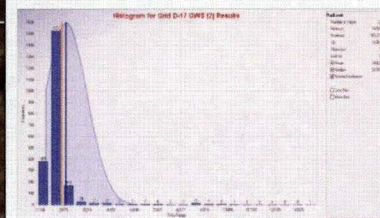
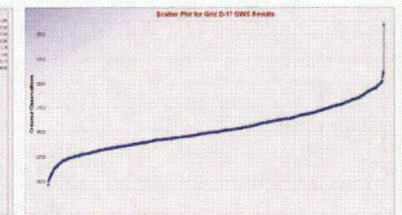
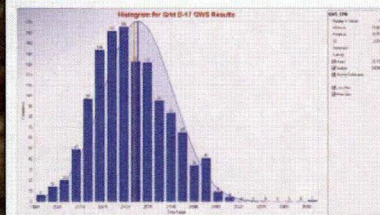
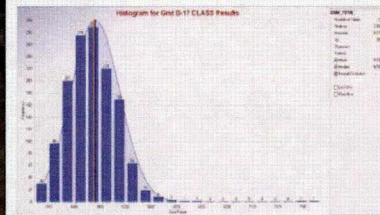
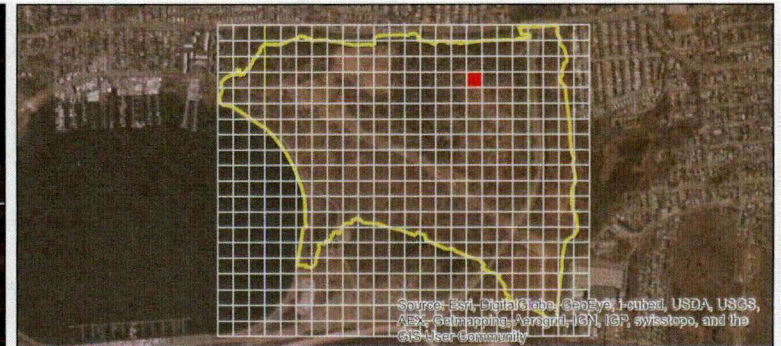
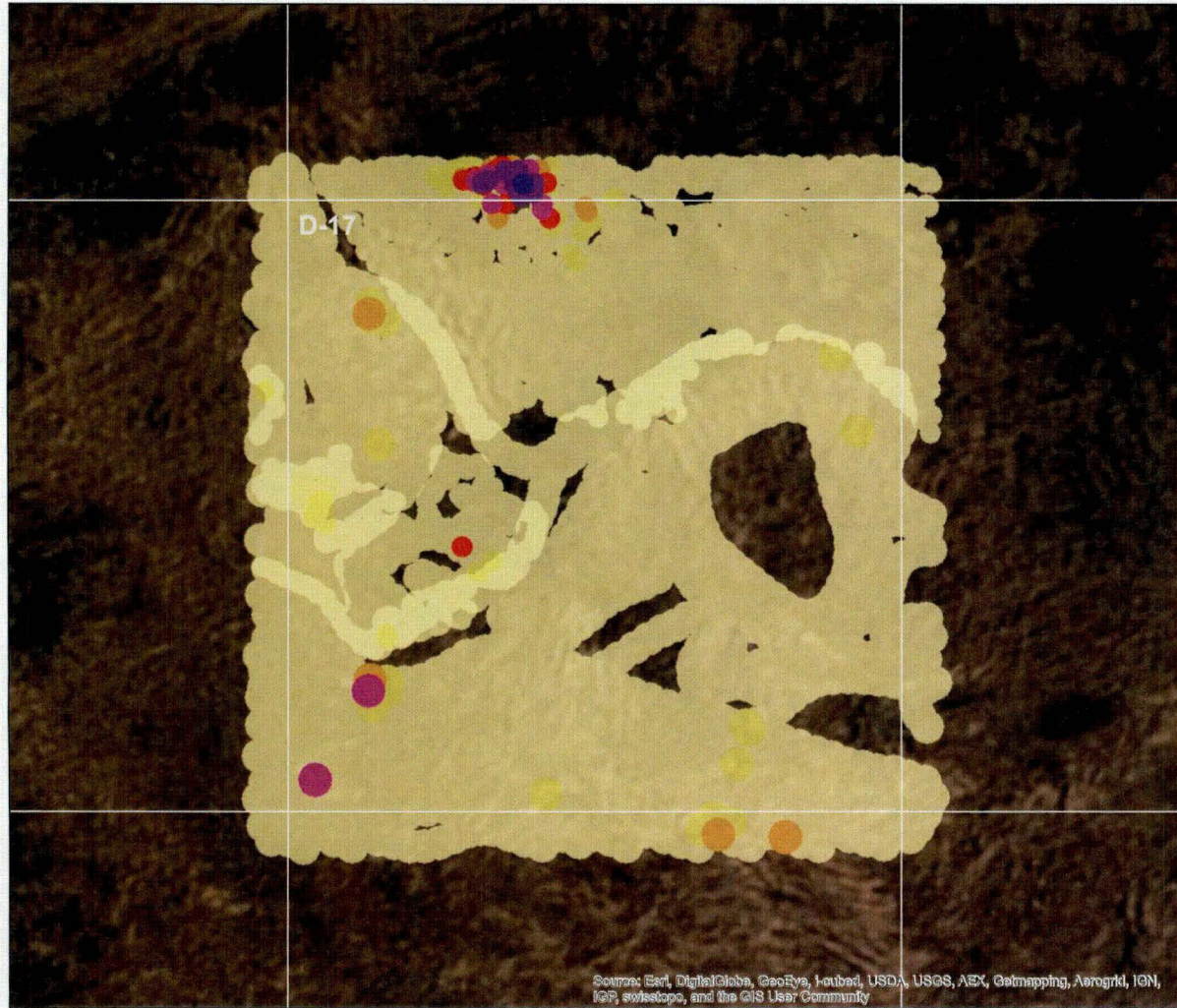
- Grid Cell
- TCRA Investigation Boundary



Z-Score

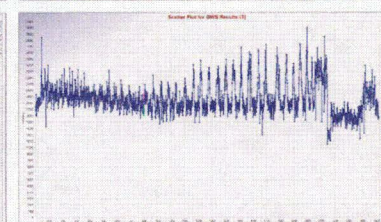
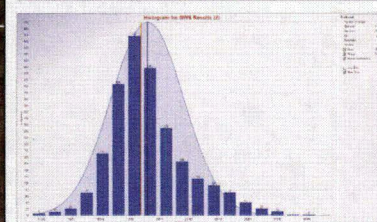
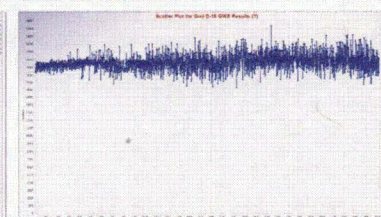
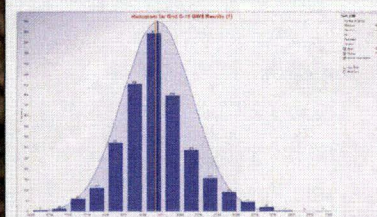
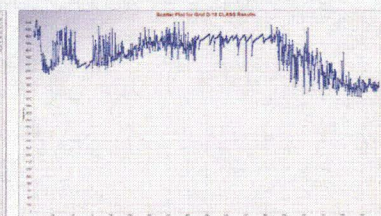
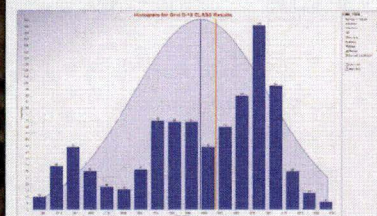
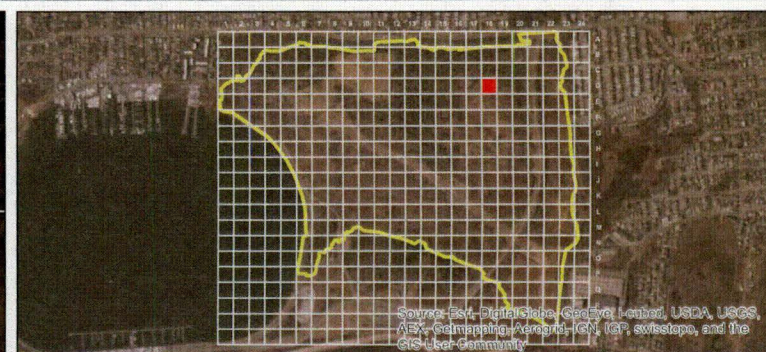
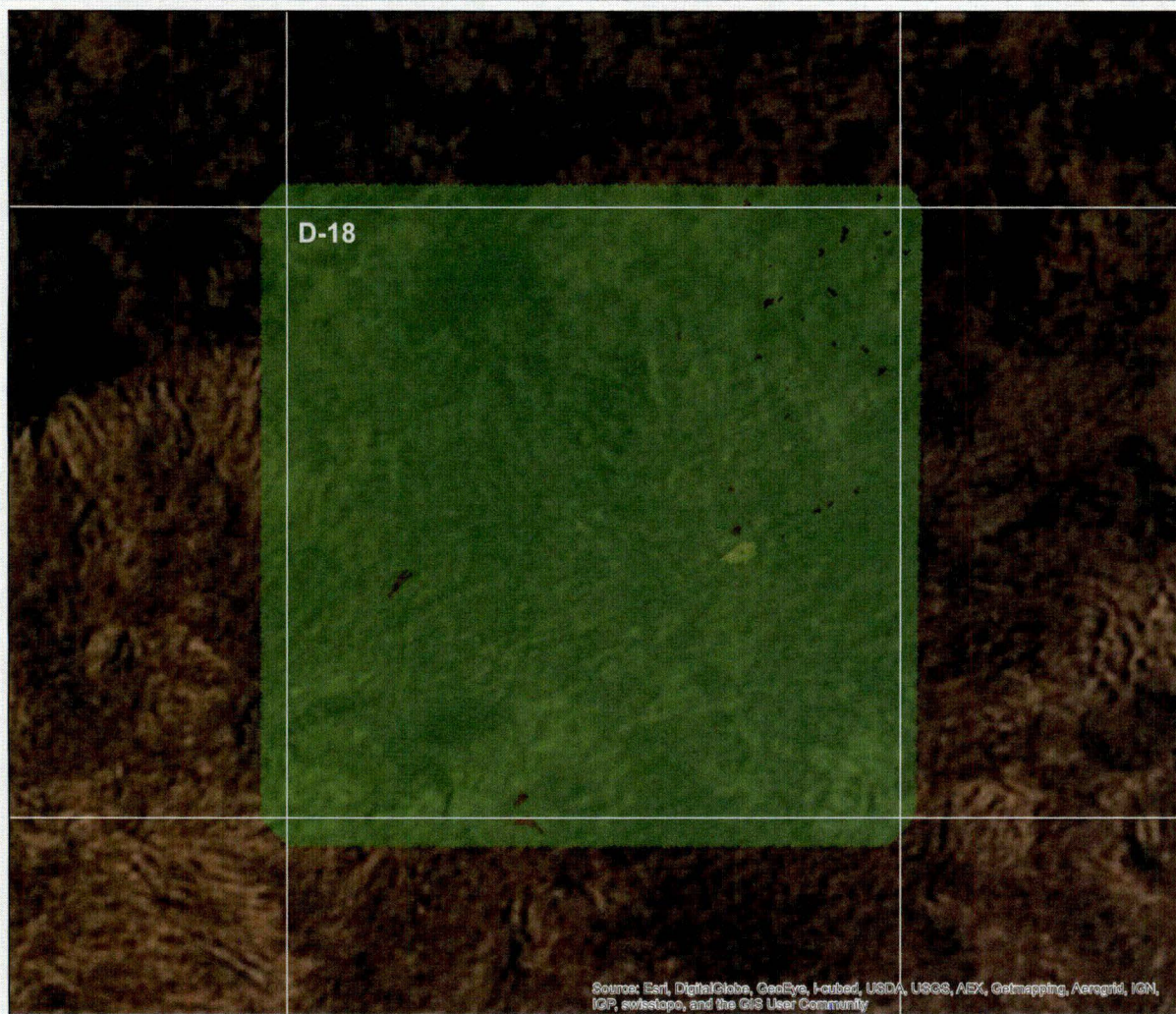
- < 2
- 2 - 3
- 3 - 5
- 7 - 11
- 11 - 15
- > 15



| | | | |
|---|--|---|--|
|  | TIDEWATER INC <small>ENVIRONMENTAL • INFRASTRUCTURE • PROJECT MANAGEMENT</small> |  | U.S. Army Corps of Engineers Philadelphia District |
| Grid Cell D-17 Z-Score | | | |
| DESIGNED BY JHG | Great Kills Park, Staten Island, NY | Figure # | |
| DRAWN BY JHG | | | |
| CHECKED BY CG | | Contract No: W92BU-13-C-0010 | |
| | | June 2014 | |



| | | | |
|---|--|---|---|
|  | TIDEWATER INC <small>Engineering • Construction • Program Management</small> |  | U.S. Army Corps of Engineers Philadelphia District |
| Grid Cell D-17 Z-Score | | | |
| DESIGNED BY | Great Kills Park, Staten Island, NY | | Figure # |
| JHG | | | |
| DRAWN BY | | | |
| JHG | | | |
| CHECKED BY | | | |
| CG | Contract No: W52BU-13-C-0010 | | June 2014 |



Source: Esri, DigitalGlobe, GeoEye, i-cubed, USDA, USGS, AES, Gtmapping, AeroGRID, IGN, IGP, swisstopo, and the GIS User Community



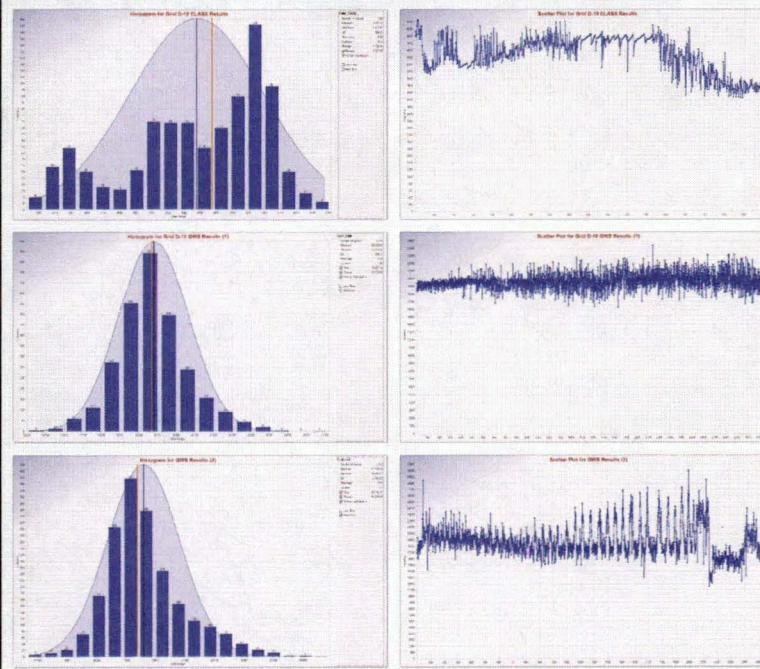
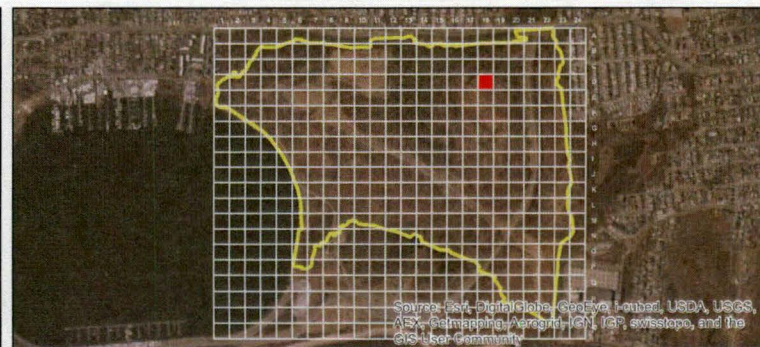
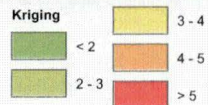
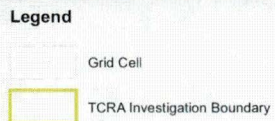
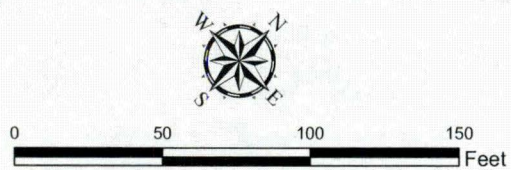
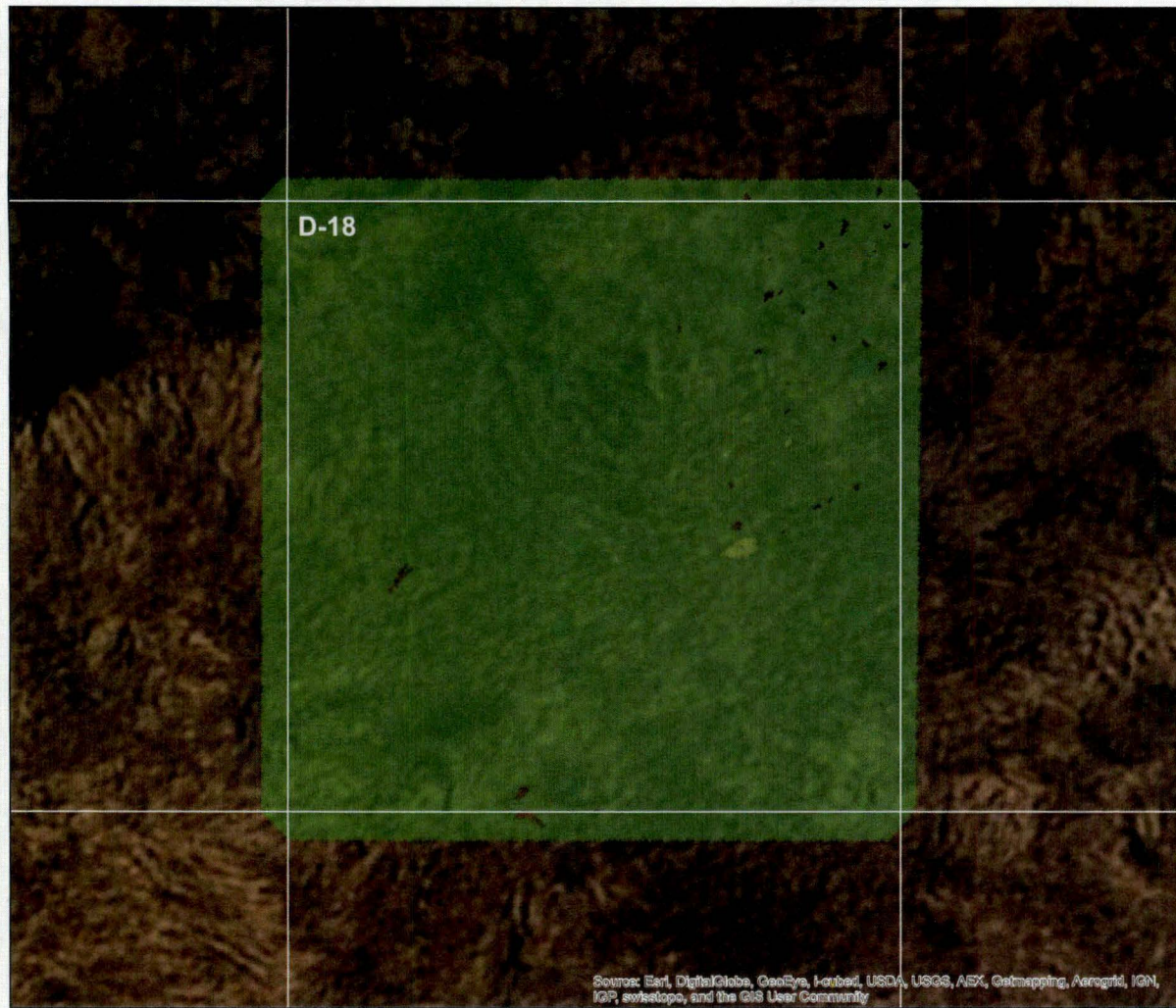
0 50 100 150 Feet

Legend

- Grid Cell
- TCRA Investigation Boundary

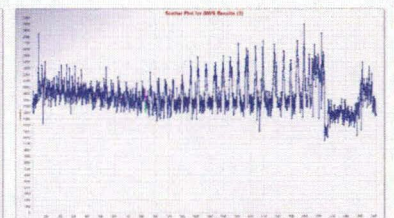
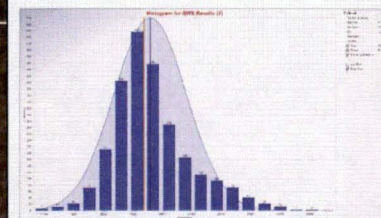
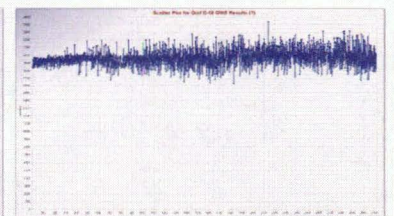
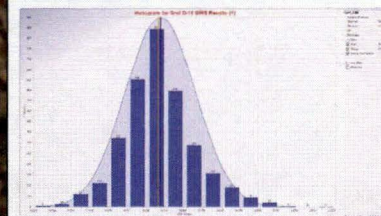
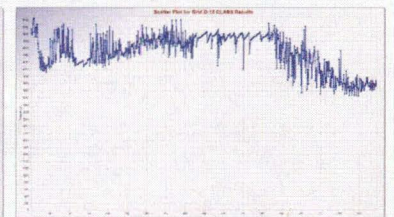
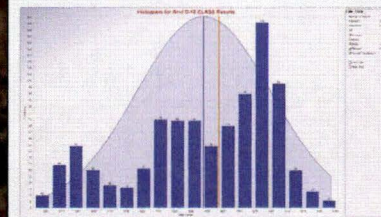
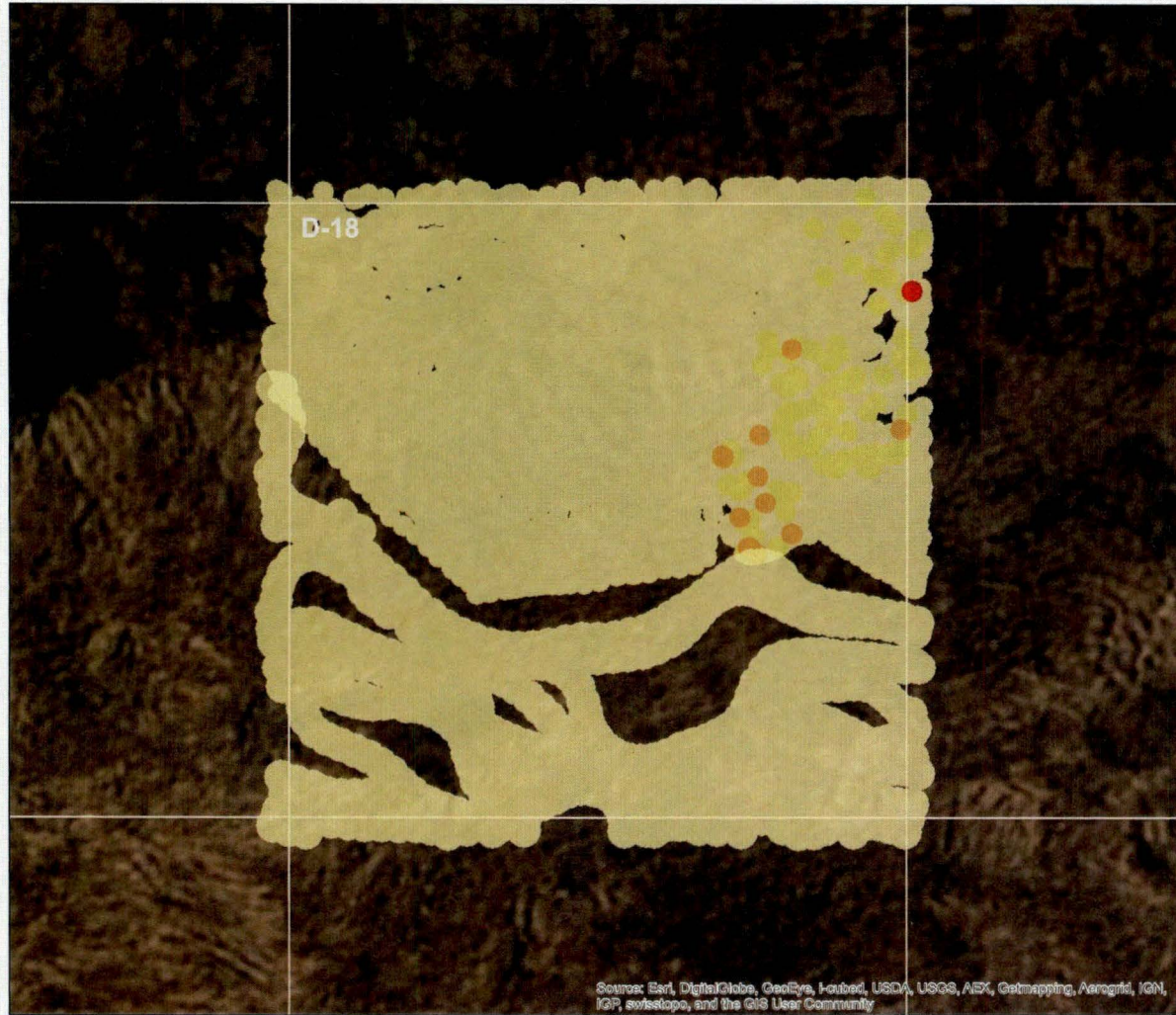
- Kriging**
- < 2
 - 2 - 3
 - 3 - 4
 - 4 - 5
 - > 5

| | | |
|--|-------------------------------------|---|
| TIDEWATER INC ENGINEERS • GEOTECHNICAL • PROGRAM MANAGER | | U.S. Army Corps of Engineers Philadelphia District |
| Grid Cell D-18 Kriging | | |
| DESIGNED BY JHG | Great Kills Park, Staten Island, NY | Figure # |
| DRAWN BY JHG | | |
| CHECKED BY CG | Contract No: W92BU-13-C-0010 | June 2014 |



Grid Cell D-18 Kriging

| | | |
|-------------|-------------------------------------|-----------|
| DESIGNED BY | Great Kills Park, Staten Island, NY | Figure # |
| DRAWN BY | | |
| CHECKED BY | Contract No: W92BU-13-C-0010 | June 2014 |



Legend

- Grid Cell
- TCRA Investigation Boundary

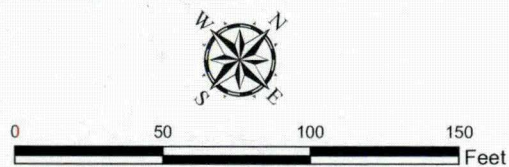
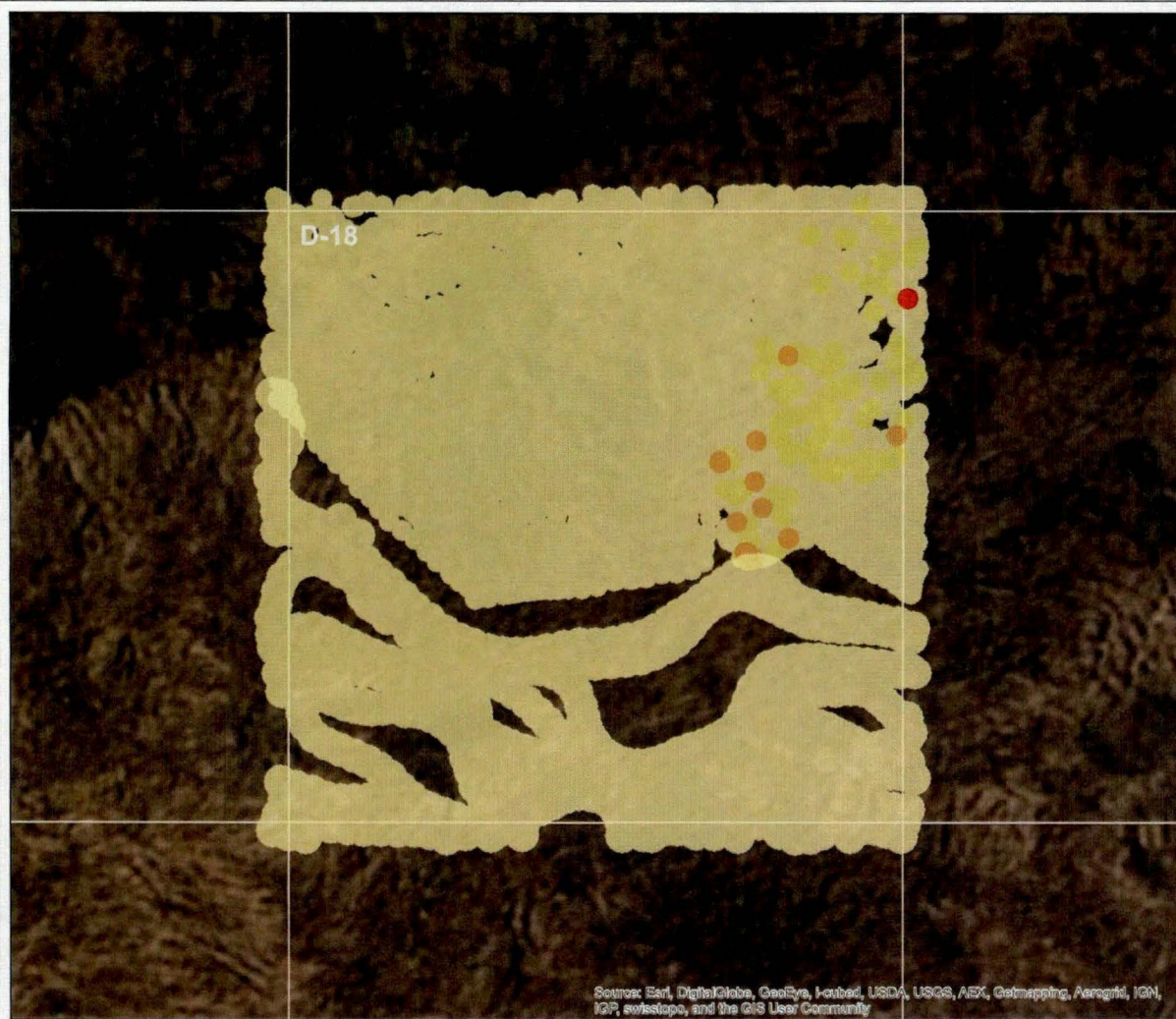
Z-Score

- < 2
- 2 - 3
- 3 - 5
- 5 - 7
- 7 - 11
- 11 - 15
- > 15



0 50 100 150 Feet

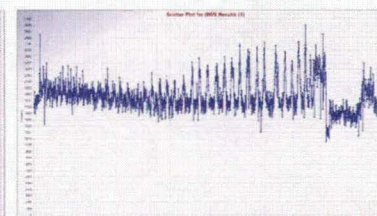
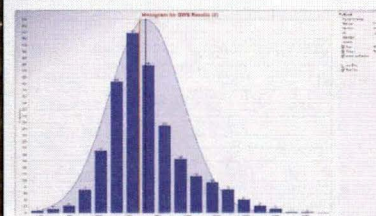
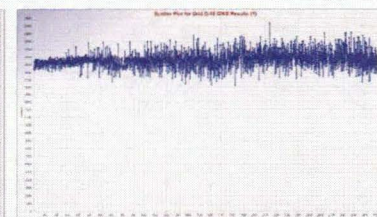
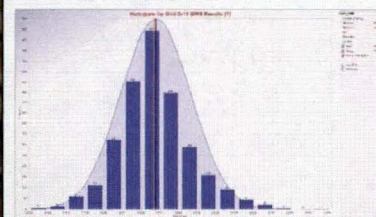
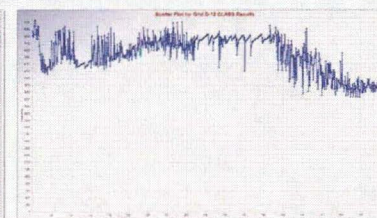
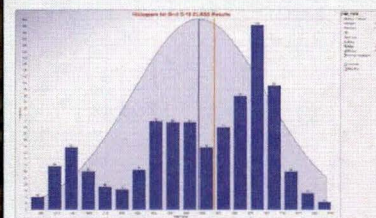
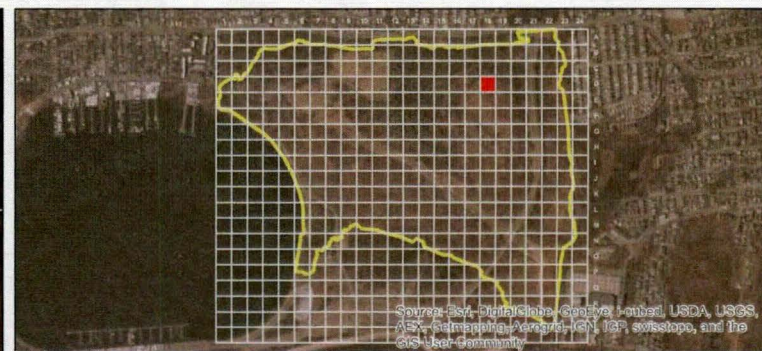
| | | |
|-------------------------------------|--|------------------|
| | | |
| <p>Grid Cell D-18 Z-Score</p> | | |
| DESIGNED BY | <p>Great Kills Park, Staten Island, NY</p> | <p>Figure #</p> |
| DRAWN BY | | |
| CHECKED BY | | |
| CG | | |
| <p>Contract No: W92BU-13-C-0010</p> | | <p>June 2014</p> |



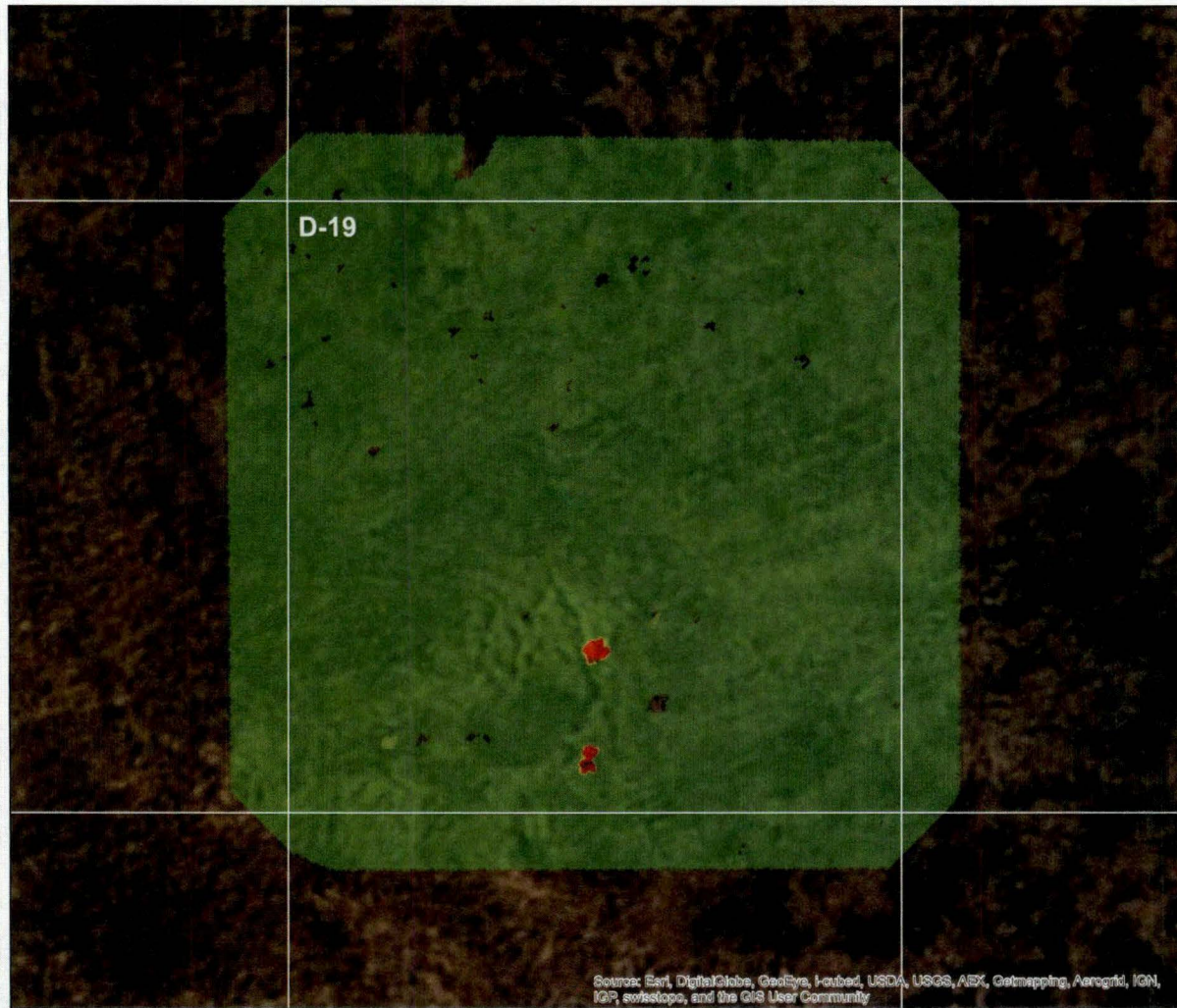
Legend

- Grid Cell
- TCRA Investigation Boundary

- Z-Score**
- < 2
 - 2 - 3
 - 3 - 5
 - 5 - 7
 - 7 - 11
 - 11 - 15
 - > 15



| | | | |
|-------------------------------|--|---------------------------------|--|
| | TIDEWATER INC <small>ENGINEERS • SCIENTISTS • PROGRAM MANAGERS</small> | | U.S. Army Corps of Engineers Philadelphia District |
| Grid Cell D-18 Z-Score | | | |
| DESIGNED BY JHG | Great Kills Park, Staten Island, NY | | Figure # |
| DRAWN BY JHG | | | |
| CHECKED BY CG | | | |
| | | Contract No: W92BU-13-C-0010 | June 2014 |



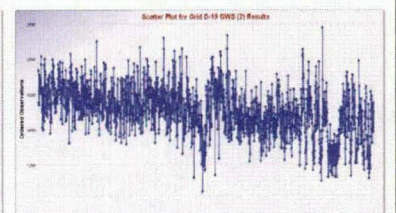
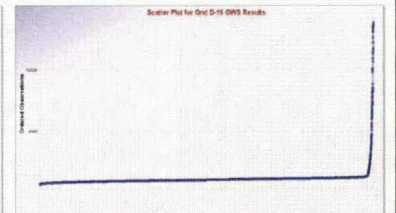
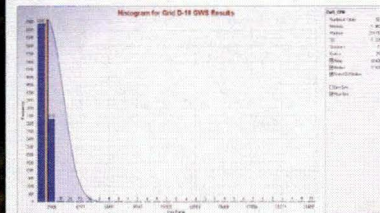
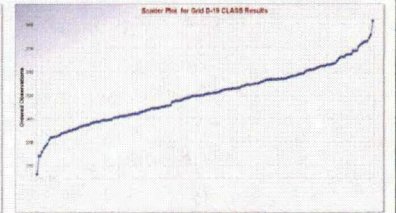
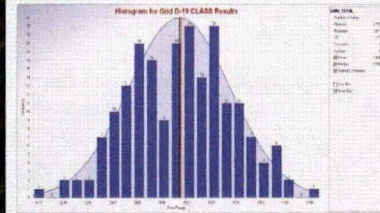
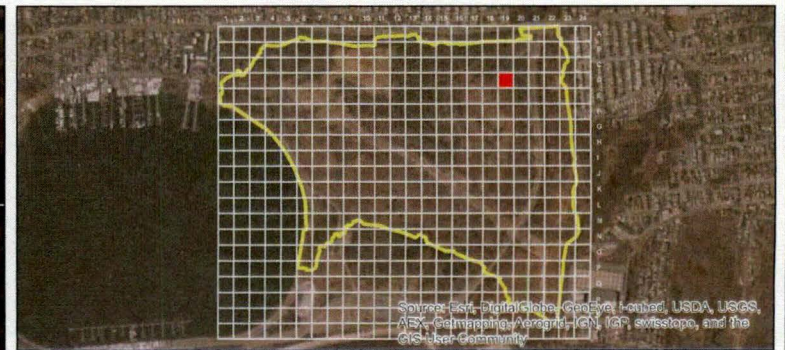
Legend

- Grid Cell
- TCRA Investigation Boundary

Kriging

- < 2
- 2 - 3
- 3 - 4
- 4 - 5
- > 5

0 50 100 150 Feet



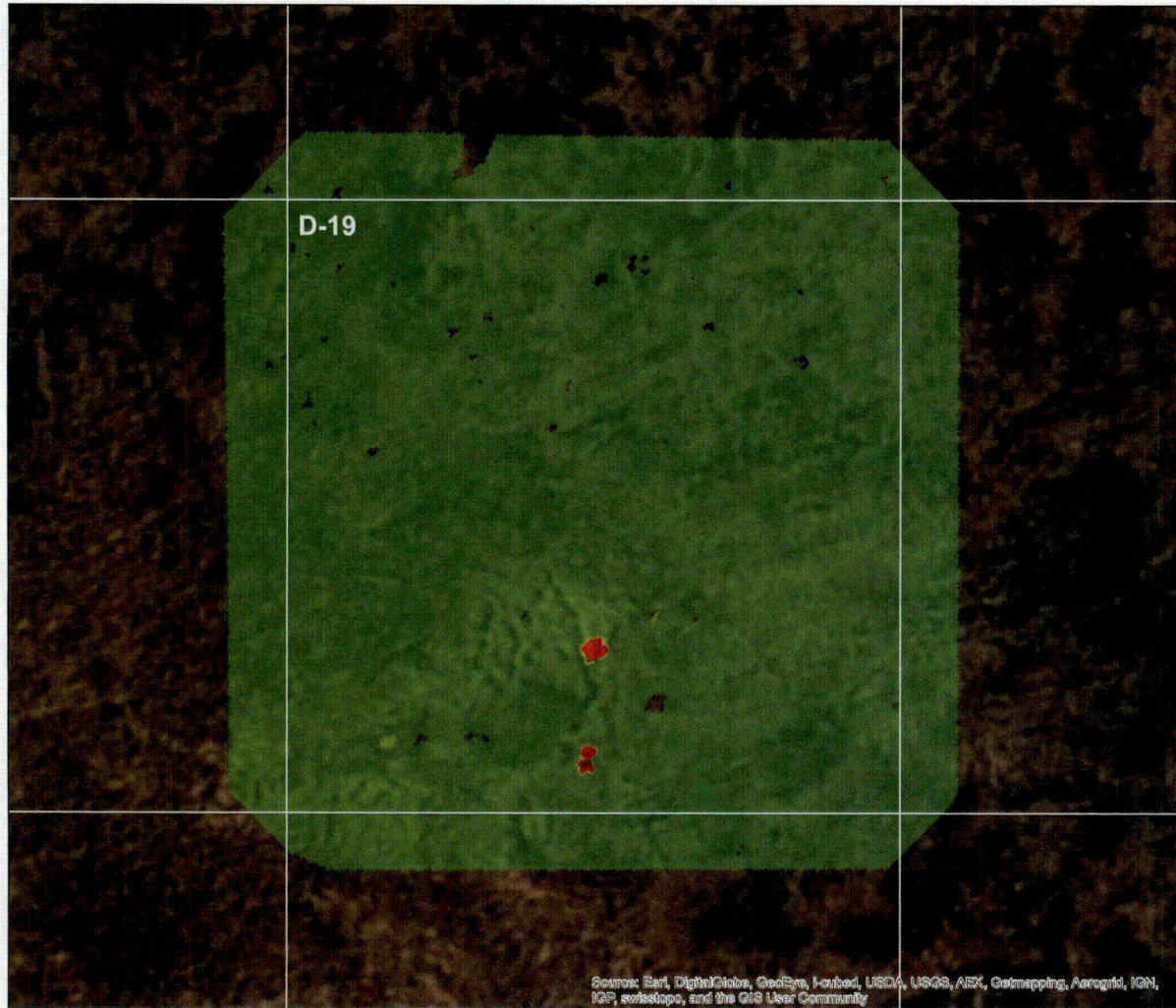
TIDEWATER INC

ENGINEERS • CONSULTANTS • PROGRAM MANAGERS

U.S. Army Corps
of Engineers
Philadelphia District

Grid Cell D-19 Kriging

| | | |
|-------------|-------------------------------------|--------------|
| DESIGNED BY | Great Kills Park, Staten Island, NY | Figure # |
| DRAWN BY | | |
| CHECKED BY | Contract No: W92BU-13-C-0010 | June 2014 |
| CG | | |



Legend

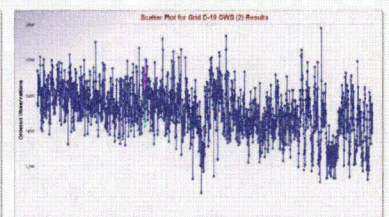
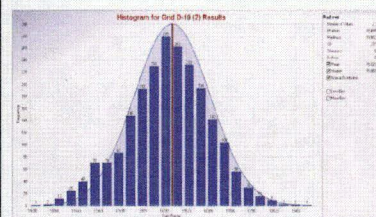
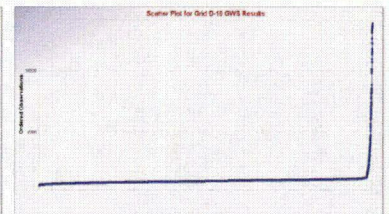
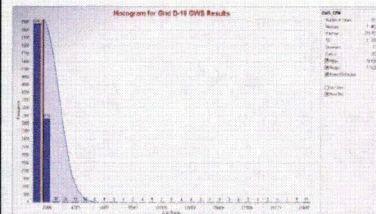
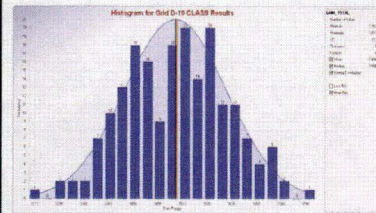
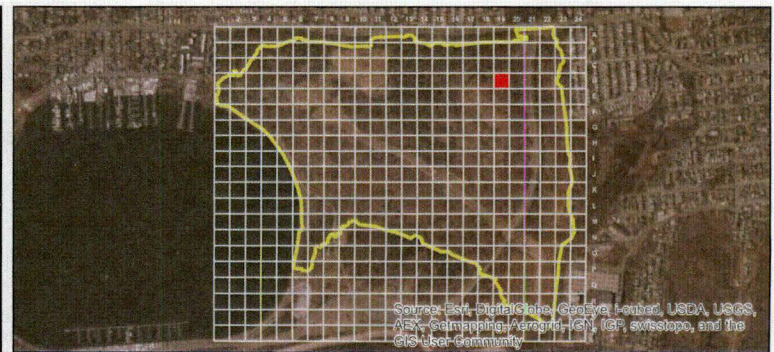
- Grid Cell
- TCRA Investigation Boundary

Kriging

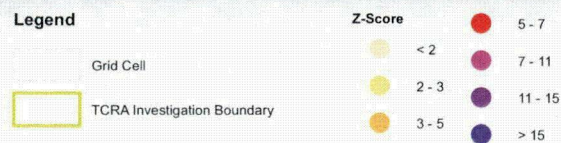
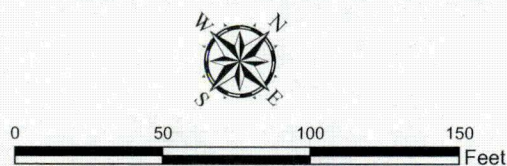
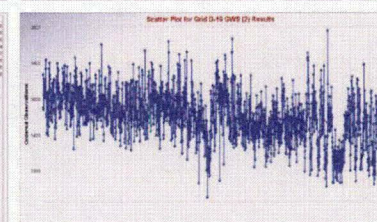
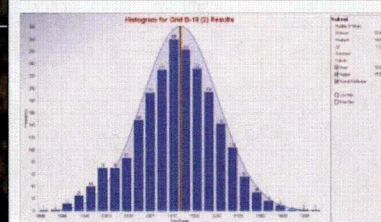
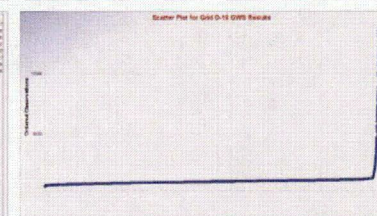
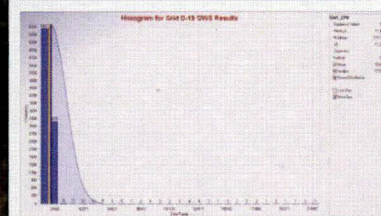
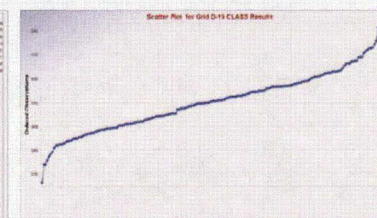
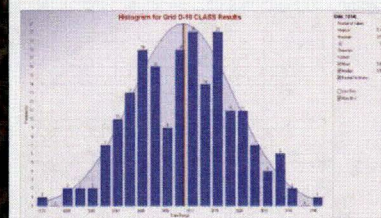
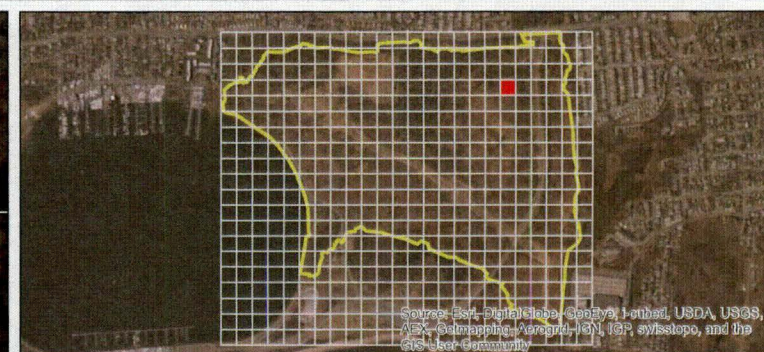
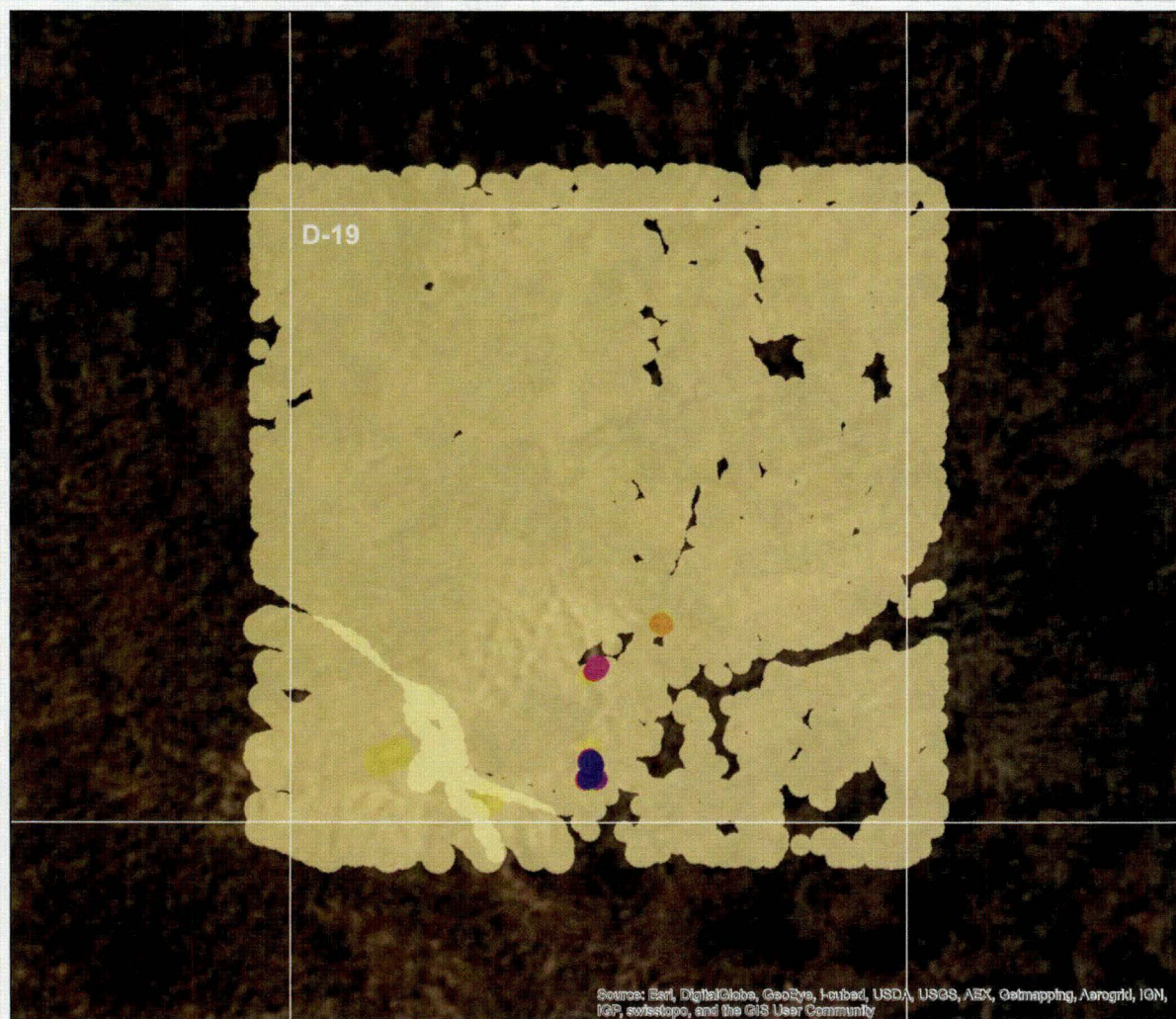
- < 2
- 2 - 3
- 3 - 4
- 4 - 5
- > 5



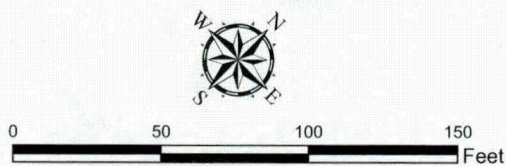
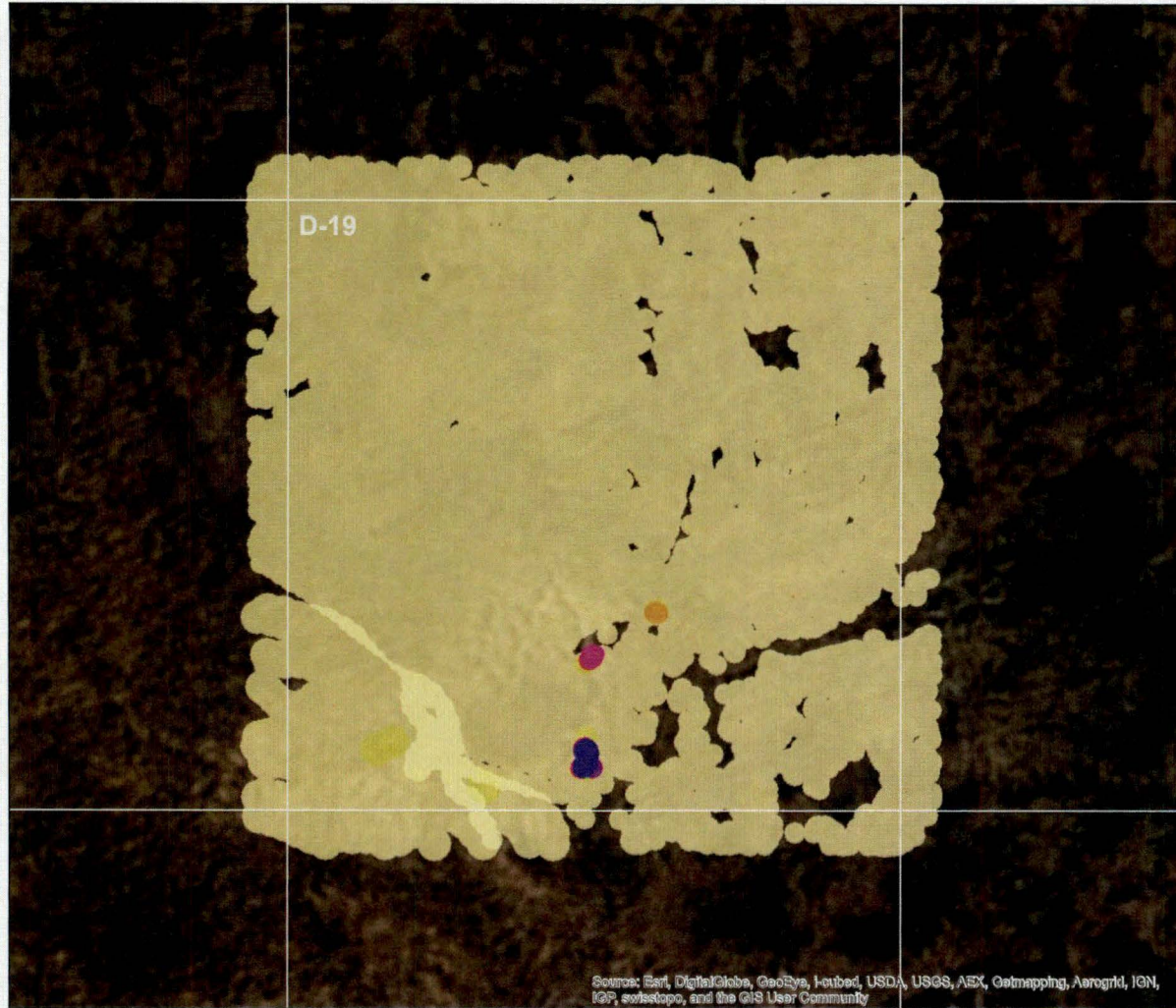
0 50 100 150 Feet



| | | |
|--|-------------------------------------|---|
| TIDEWATER INC ENGINEERS • CONSULTANTS • PROJECT MANAGERS | | U.S. Army Corps of Engineers Philadelphia District |
| Grid Cell D-19 Kriging | | |
| DESIGNED BY | Great Kills Park, Staten Island, NY | Figure # |
| DRAWN BY | | |
| CHECKED BY | | |
| CG | | |
| Contract No: | | June 2014 |
| W92BU-13-C-0010 | | |



| | |
|-------------------------------------|-----------------|
| | |
| Grid Cell D-19 Z-Score | |
| DESIGNED BY | JHG |
| DRAWN BY | JHG |
| CHECKED BY | CG |
| Great Kills Park, Staten Island, NY | |
| Contract No: | W92BU-13-C-0010 |
| Figure # | June 2014 |

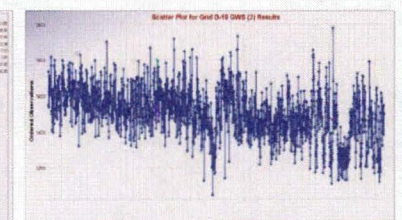
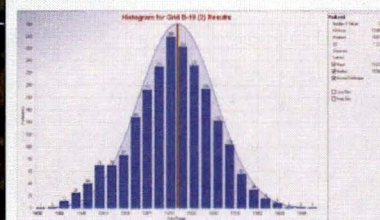
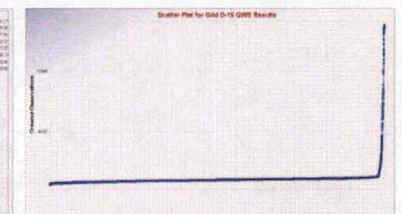
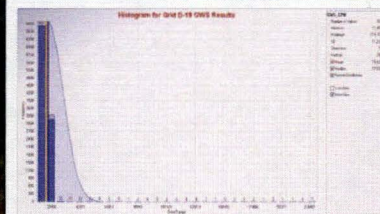
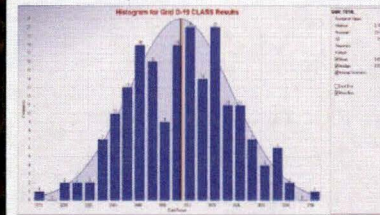
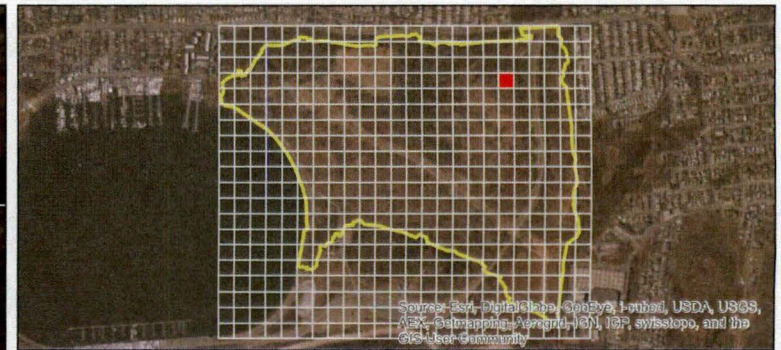


Legend

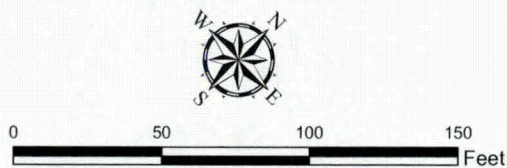
- Grid Cell
- TCRA Investigation Boundary

Z-Score

- < 2
- 2 - 3
- 3 - 5
- 5 - 7
- 7 - 11
- 11 - 15
- > 15



| | | |
|---------------------------------|--|------------------------------|
| | | |
| Grid Cell D-19 Z-Score | | |
| DESIGNED BY | Great Kills Park, Staten Island, NY | Figure # June 2014 |
| DRAWN BY | | |
| CHECKED BY | | |
| CG | | |
| Contract No: W92BU-13-C-0010 | | |



Legend

Grid Cell

TCRA Investigation Boundary

Kriging

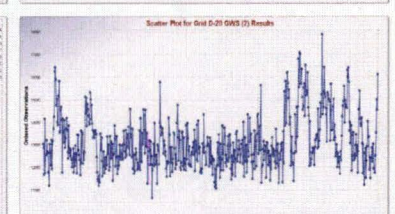
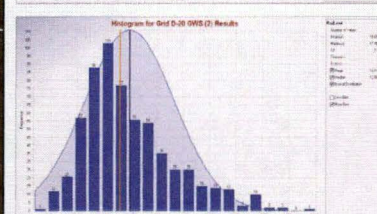
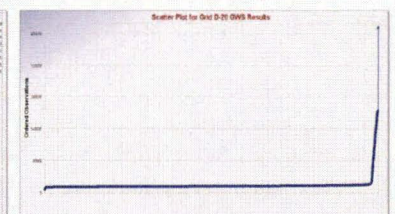
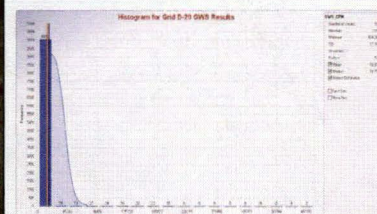
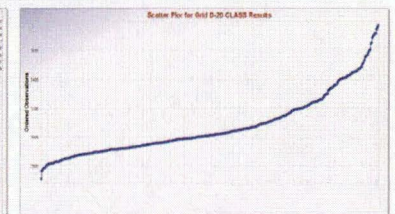
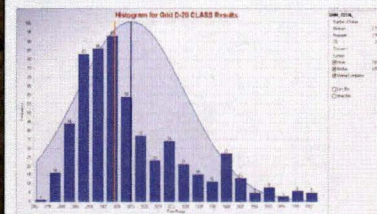
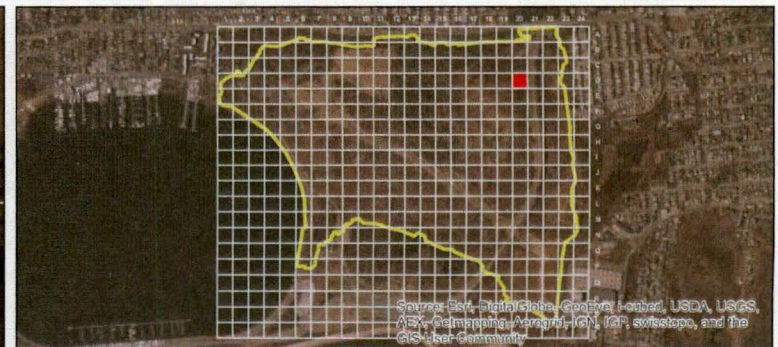
< 2

2 - 3

3 - 4

4 - 5

> 5



| | | |
|------------------------|-------------------------------------|-----------|
| | | |
| Grid Cell D-20 Kriging | | |
| DESIGNED BY JHG | Great Kills Park, Staten Island, NY | Figure # |
| DRAWN BY JHG | | |
| CHECKED BY CG | Contract No: W92BU-13-C-0010 | June 2014 |



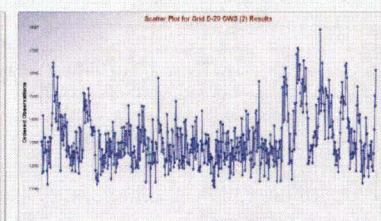
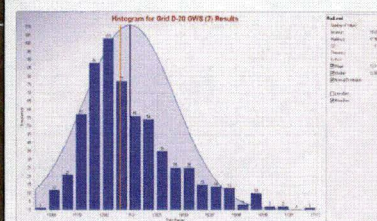
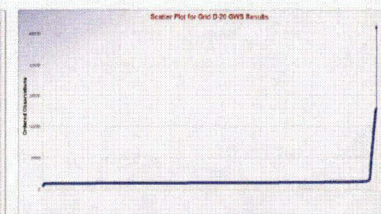
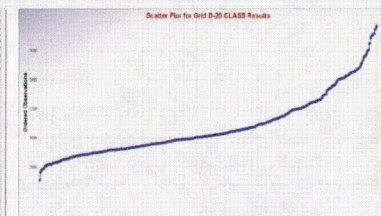
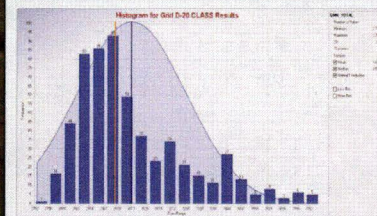
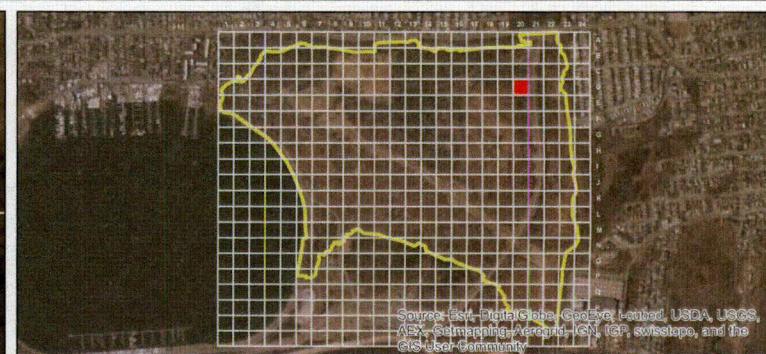
Legend

- Grid Cell
- TCRA Investigation Boundary

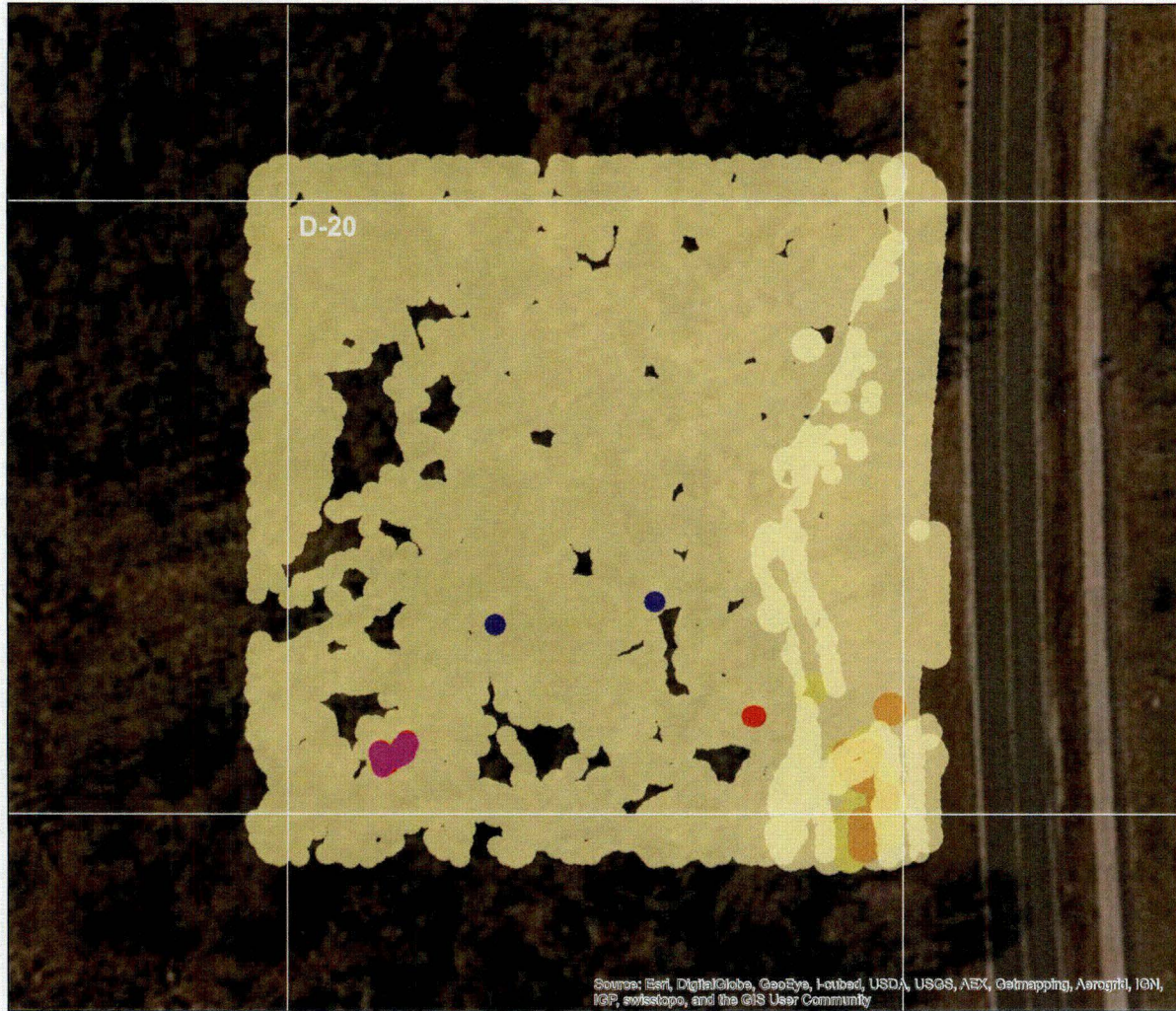
Kriging

- < 2
- 2 - 3
- 3 - 4
- 4 - 5
- > 5

0 50 100 150 Feet



| | | |
|------------------------------|-------------------------------------|-----------|
| | | |
| Grid Cell D-20 Kriging | | |
| DESIGNED BY | Great Kills Park, Staten Island, NY | Figure # |
| DRAWN BY | | |
| CHECKED BY | | |
| CG | | |
| Contract No: W92BU-13-C-0010 | | June 2014 |



Legend

Grid Cell

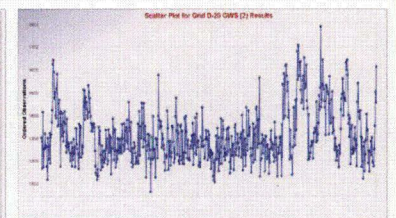
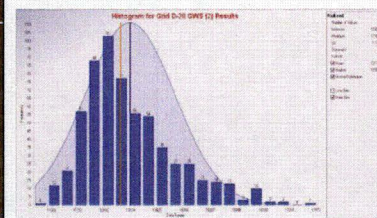
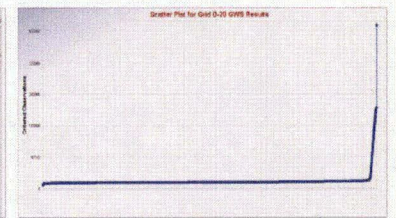
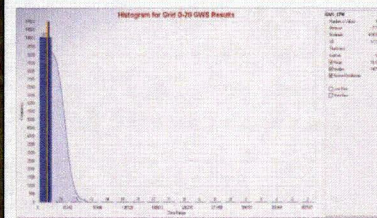
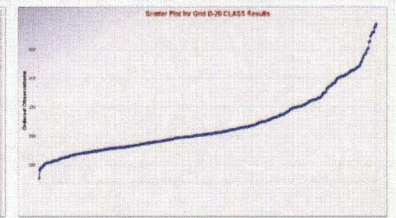
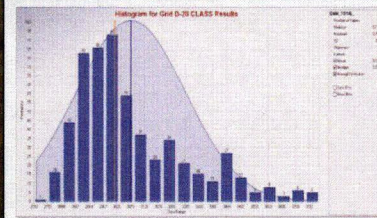
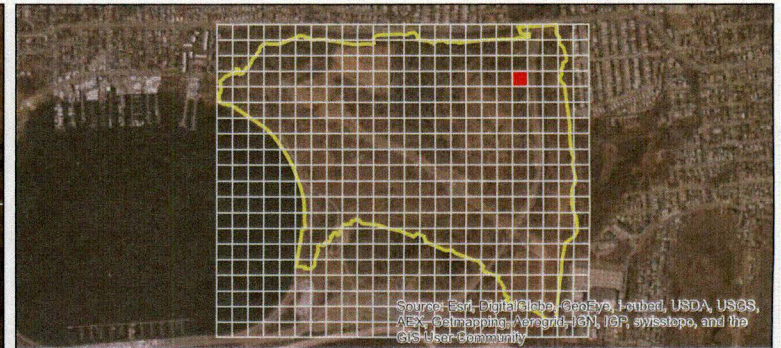
TCRA Investigation Boundary

Z-Score

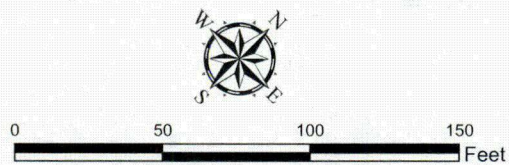
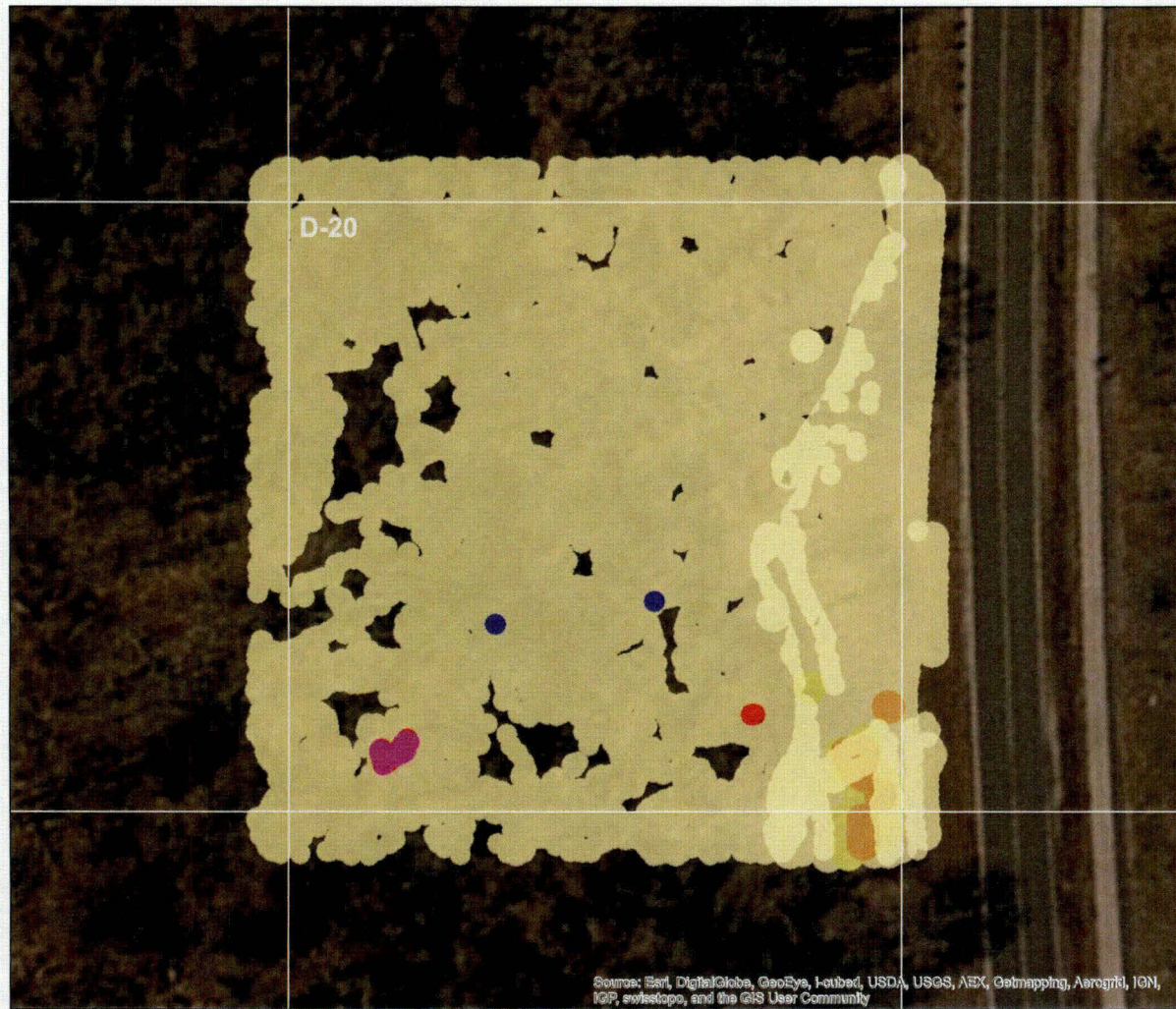
- < 2
- 2 - 3
- 3 - 5
- 5 - 7
- 7 - 11
- 11 - 15
- > 15



0 50 100 150 Feet



| | | |
|------------------------|-------------------------------------|-----------|
| | | |
| Grid Cell D-20 Z-Score | | |
| DESIGNED BY | Great Kills Park, Staten Island, NY | Figure # |
| DRAWN BY | | |
| CHECKED BY | Contract No: W92BU-13-C-0010 | June 2014 |
| CG | | |

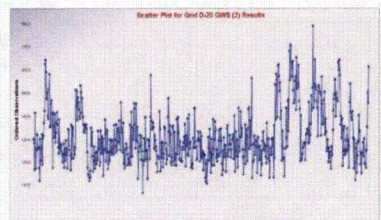
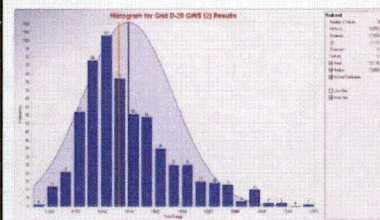
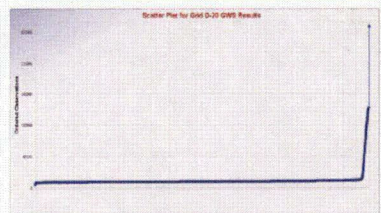
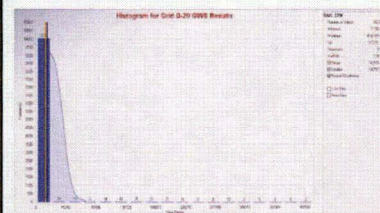
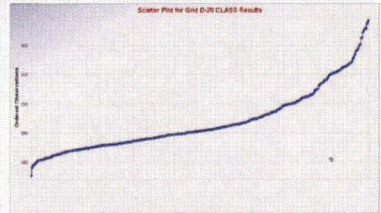
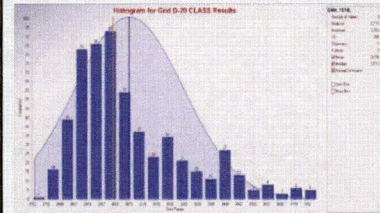


Legend

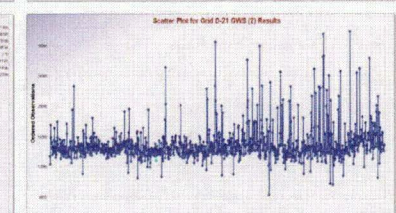
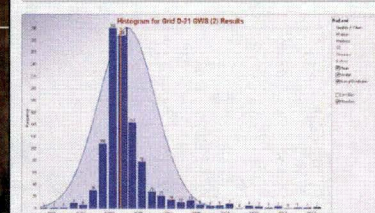
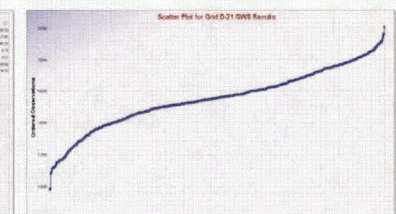
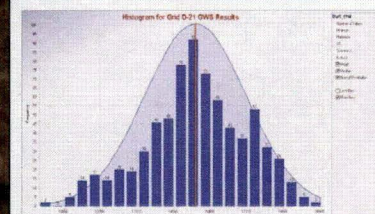
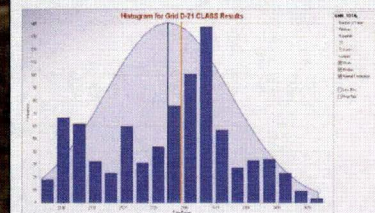
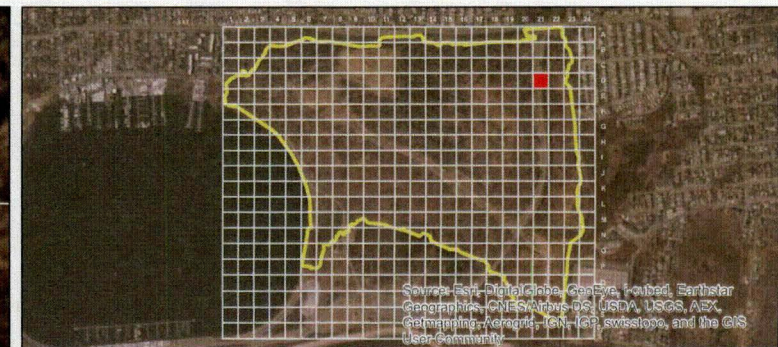
- Grid Cell
- TCRA Investigation Boundary

Z-Score

- < 2
- 2 - 3
- 3 - 5
- 5 - 7
- 7 - 11
- 11 - 15
- > 15



| | | |
|---|-------------------------------------|---|
| TIDEWATER INC DESIGNERS • ENGINEERS • PROGRAM MANAGERS | | U.S. Army Corps of Engineers Philadelphia District |
| Grid Cell D-20 Z-Score | | |
| DESIGNED BY | Great Kills Park, Staten Island, NY | Figure # |
| DRAWN BY | | |
| CHECKED BY | | |
| CG | | |
| Contract No: | | June 2014 |
| W92BU-13-C-0010 | | |



Legend

Grid Cell

TCRA Investigation Boundary

Kriging

< 2

2 - 3

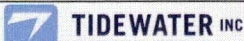
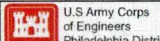
3 - 4

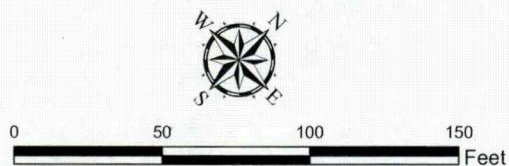
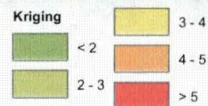
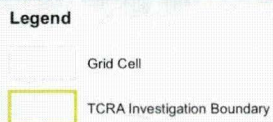
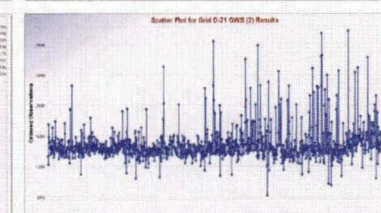
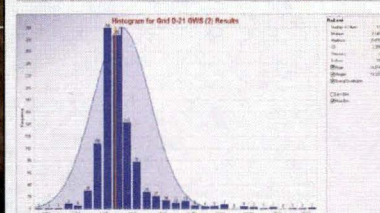
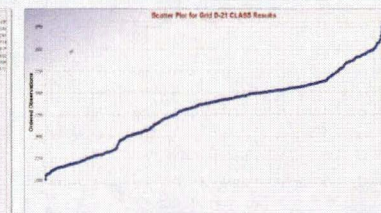
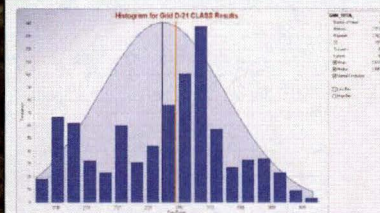
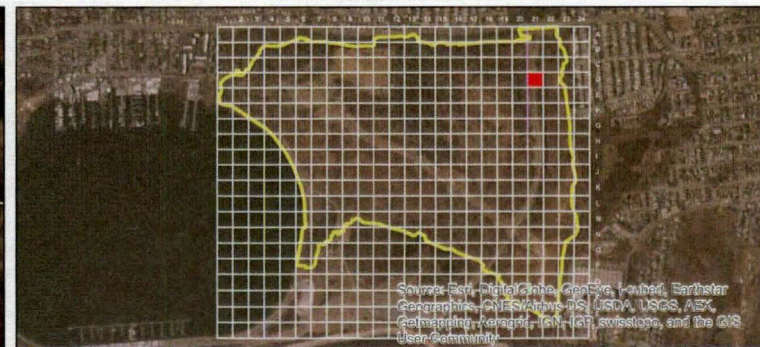
4 - 5


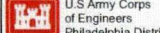
> 5

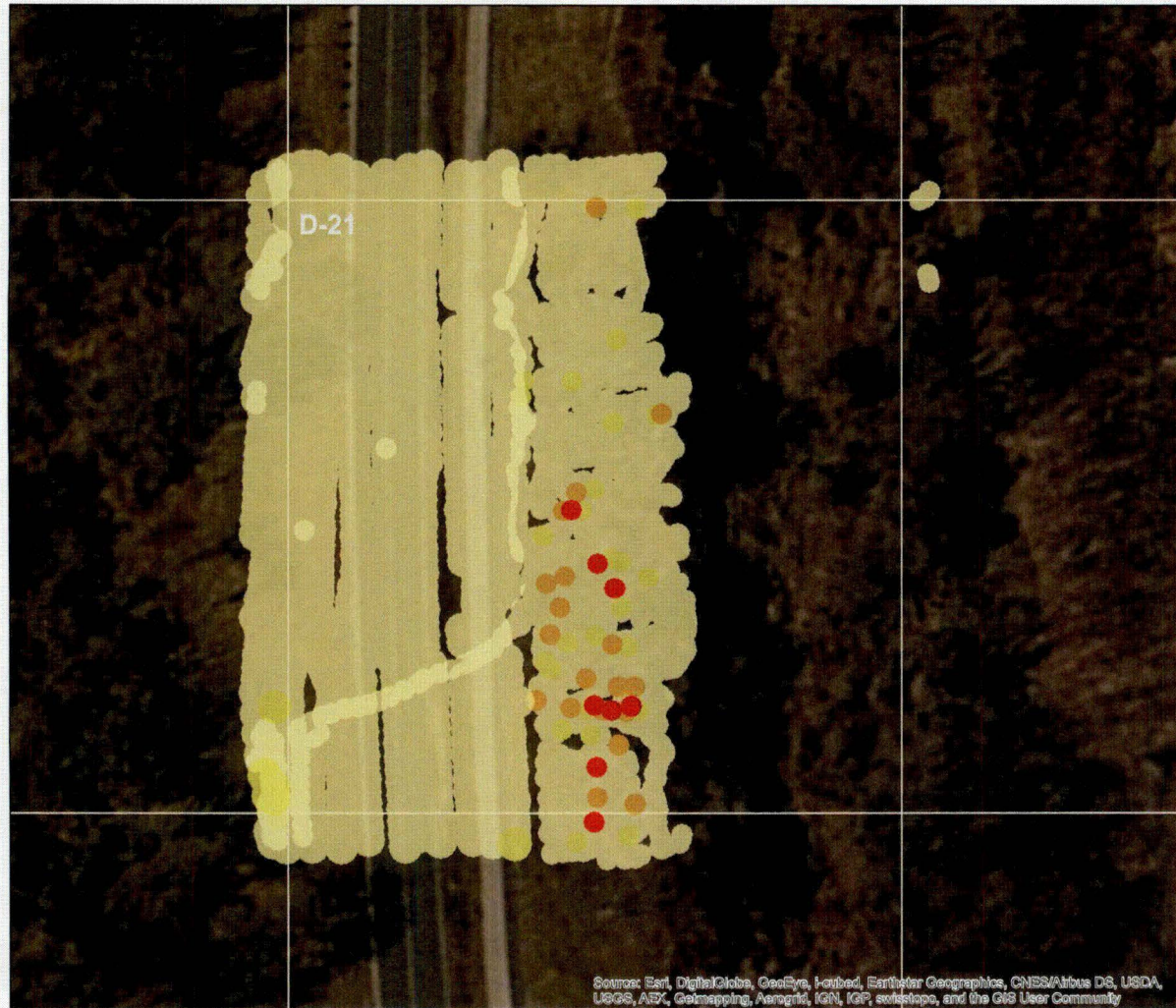


0 50 100 150 Feet

| | |
|---|-----------|
|   | |
| Grid Cell D-21 Kriging | |
| DESIGNED BY | JHG |
| DRAWN BY | JHG |
| CHECKED BY | CG |
| Great Kills Park, Staten Island, NY | |
| Figure # | June 2014 |
| Contract No: W92BU-13-C-0010 | |



| | | |
|---|-------------------------------------|-----------|
|   | | |
| Grid Cell D-21 Kriging | | |
| DESIGNED BY JHG | Great Kills Park, Staten Island, NY | Figure # |
| DRAWN BY JHG | | |
| CHECKED BY CS | Contract No: W92BU-13-C-0010 | June 2014 |



Sources: Esri, DigitalGlobe, GeoEye, IGN, Earthstar Geographics, CNES/Airbus DS, USDA, USGS, AeroX, Geomapping, Aerogrid, IGN, IGP, swisstopo, and the GIS User Community

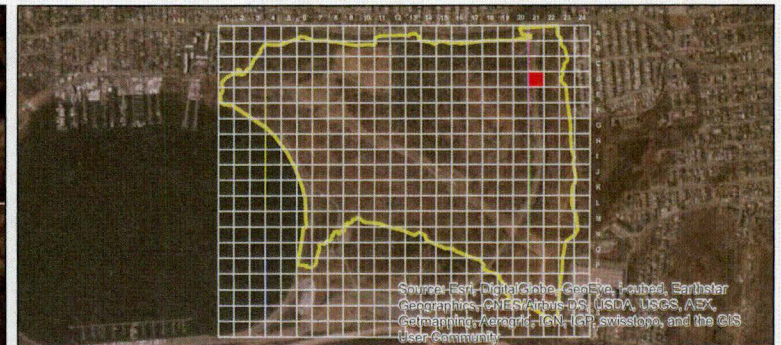


0 50 100 150 Feet

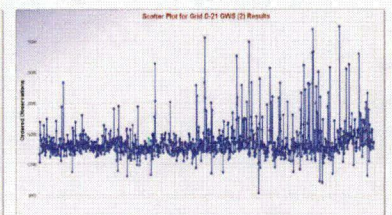
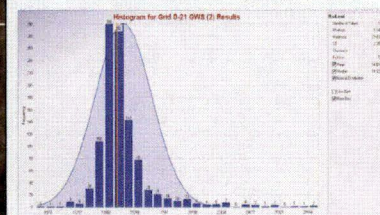
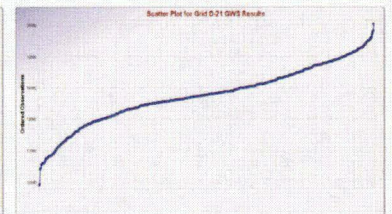
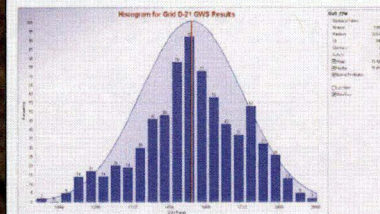
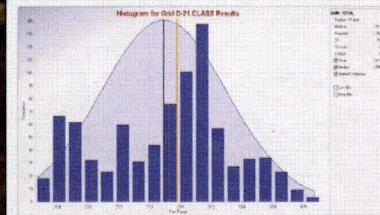
Legend

- Grid Cell
- TCRA Investigation Boundary

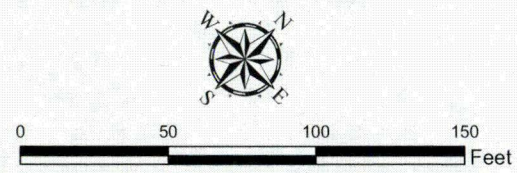
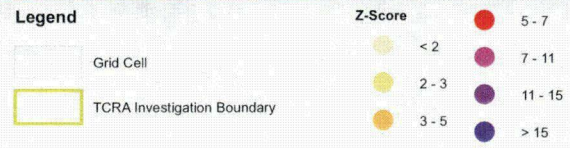
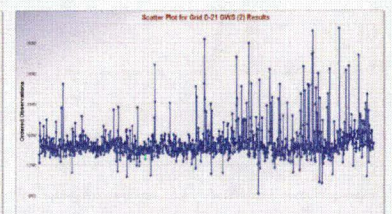
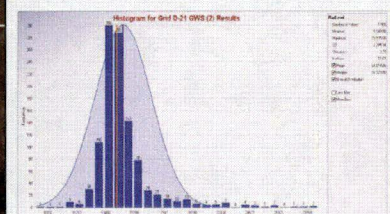
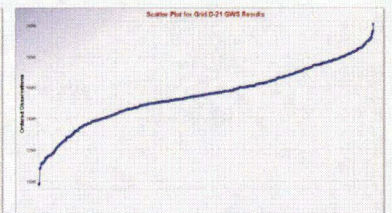
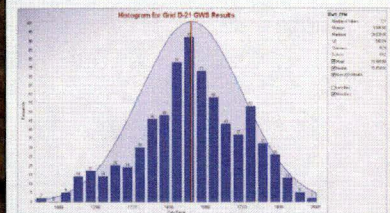
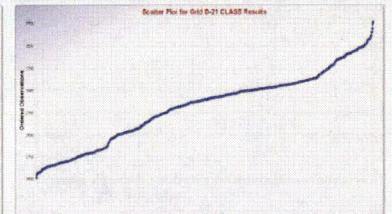
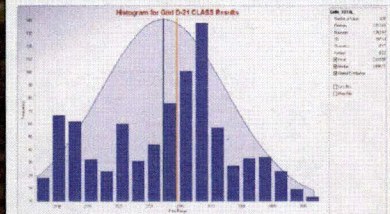
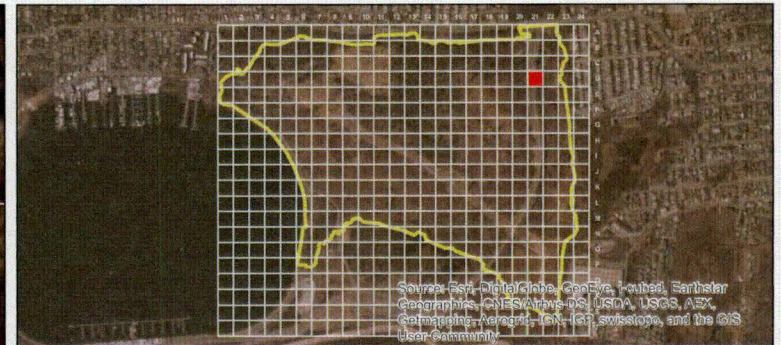
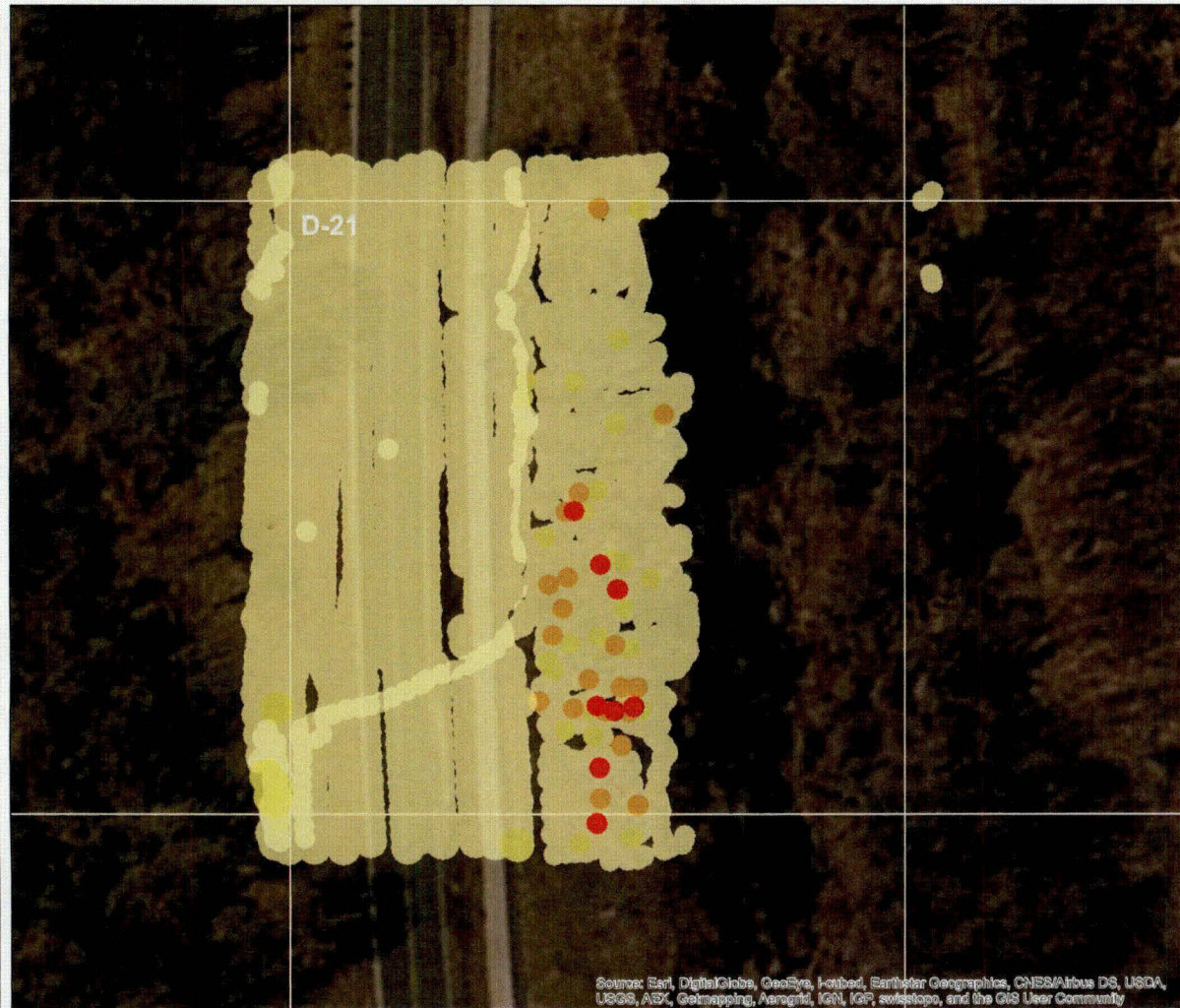
- | Z-Score | |
|---------|---------|
| | < 2 |
| | 2 - 3 |
| | 3 - 5 |
| | 5 - 7 |
| | 7 - 11 |
| | 11 - 15 |
| | > 15 |



Sources: Esri, DigitalGlobe, GeoEye, IGN, Earthstar Geographics, CNES/Airbus DS, USDA, USGS, AeroX, Geomapping, Aerogrid, IGN, IGP, swisstopo, and the GIS User Community

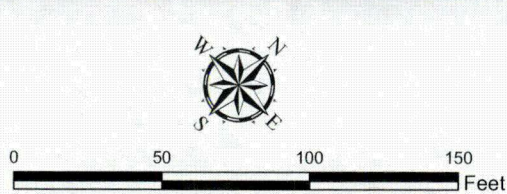
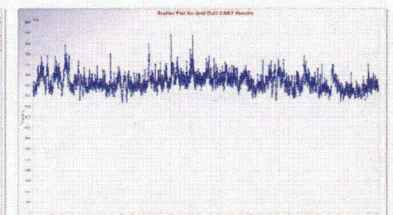
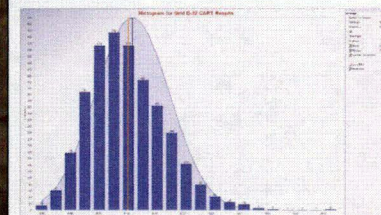
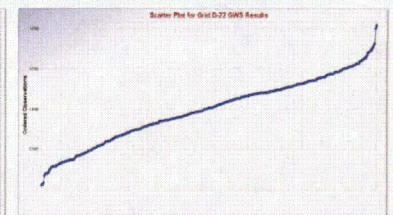
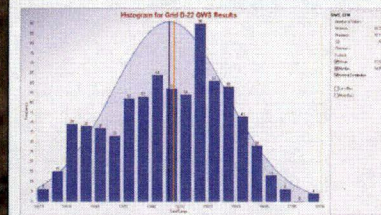
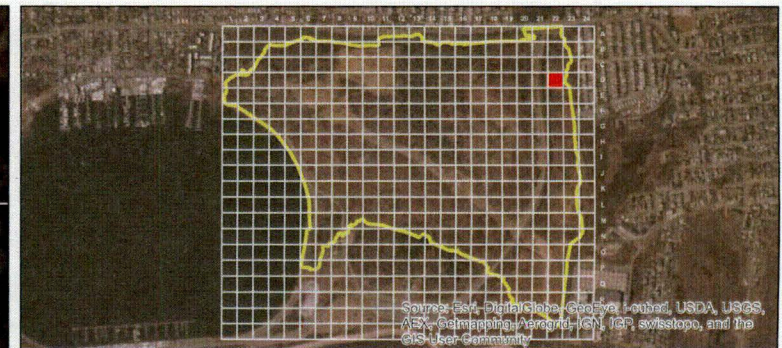
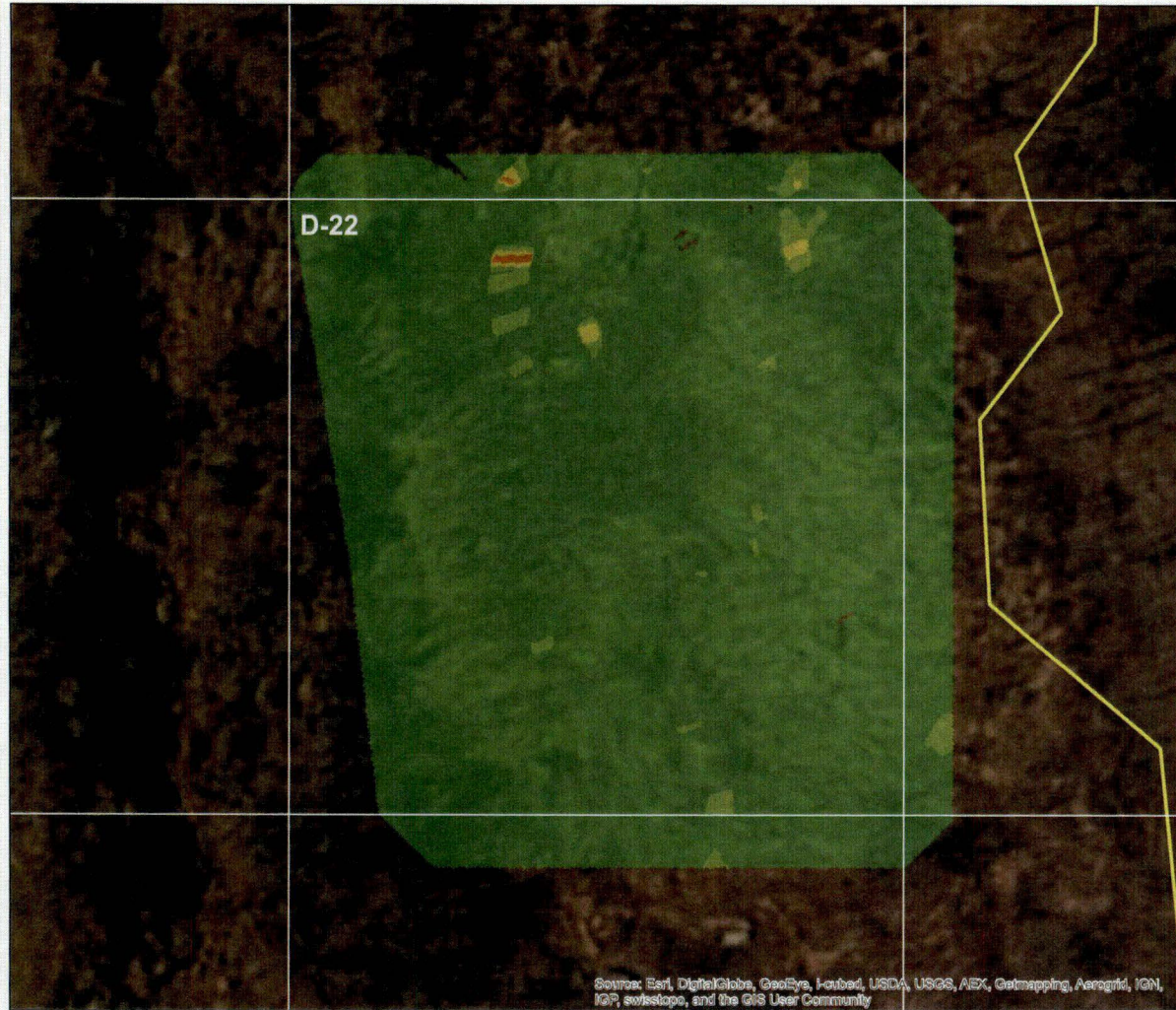


| | | |
|-------------------------------|-------------------------------------|-----------|
| | | |
| Grid Cell D-21 Z-Score | | |
| DESIGNED BY | Great Kills Park, Staten Island, NY | Figure # |
| DRAWN BY | | |
| CHECKED BY | Contract No: W92BU-13-C-0010 | June 2014 |



Grid Cell D-21 Z-Score

| | | |
|-----------------|-------------------------------------|-----------|
| DESIGNED BY | Great Kills Park, Staten Island, NY | Figure # |
| DRAWN BY | | |
| CHECKED BY | | |
| CG | | |
| Contract No: | | June 2014 |
| W92BU-13-C-0010 | | |



Legend

Grid Cell

TCRA Investigation Boundary

Kriging

< 2

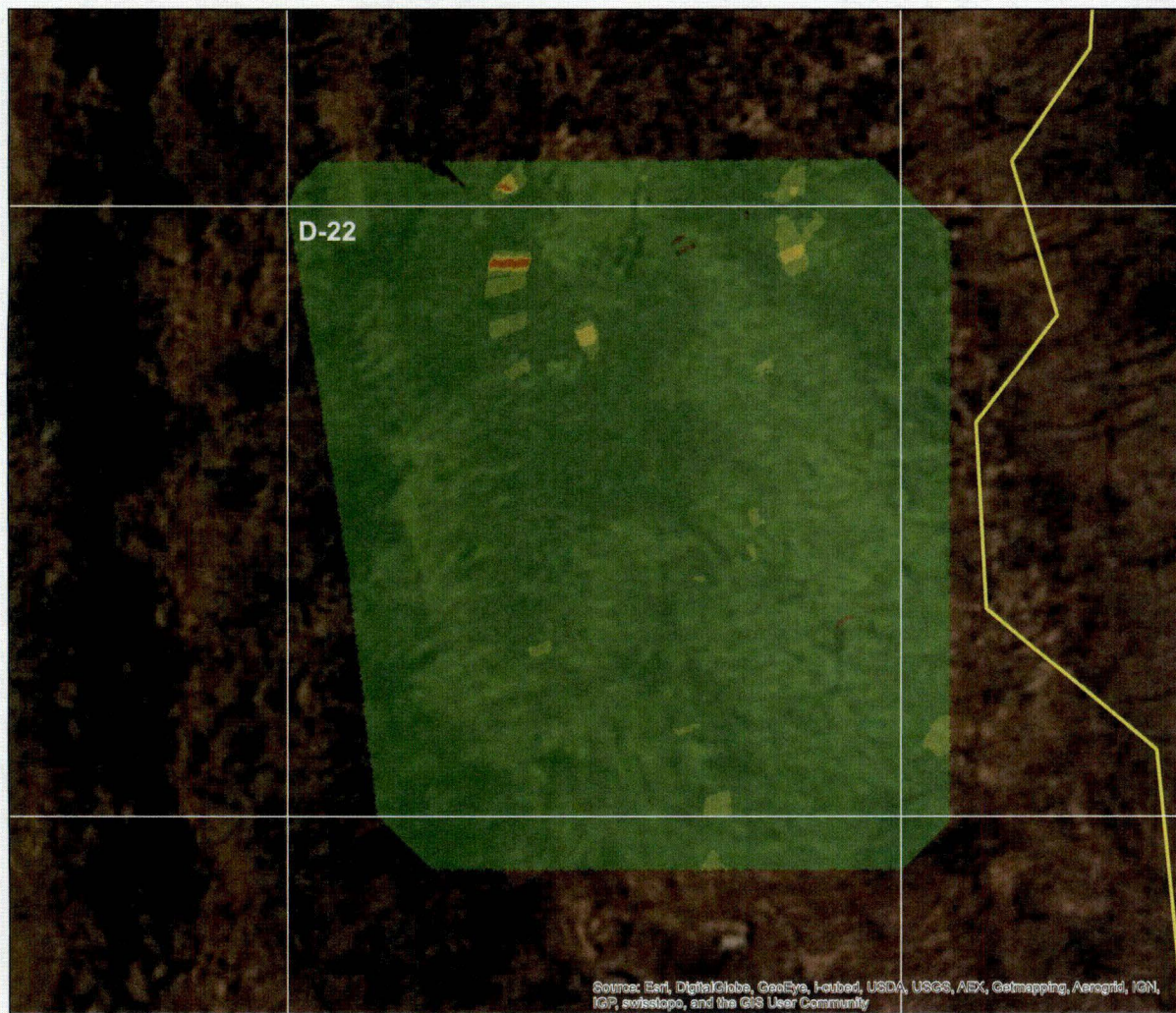
2 - 3

3 - 4

4 - 5

> 5

| | | | |
|-------------------------------|---|--------------|--|
| | TIDEWATER INC ENGINEERING • CONSULTING • PROJECT MANAGEMENT | | U.S. Army Corps of Engineers Philadelphia District |
| Grid Cell D-22 Kriging | | | |
| DESIGNED BY JHG | Great Kills Park, Staten Island, NY | Figure # | |
| DRAWN BY JHG | | | |
| CHECKED BY CG | Contract No: W92BU-13-C-0010 | June 2014 | |
| | | | |



Legend

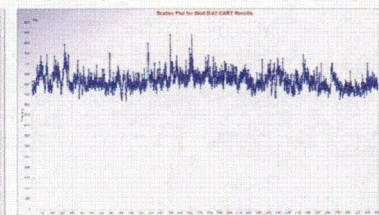
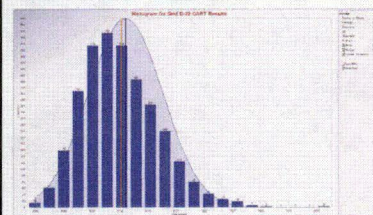
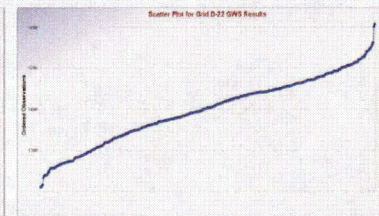
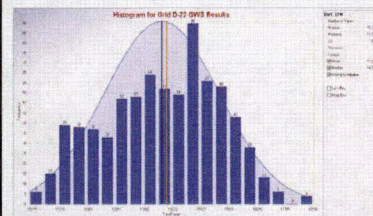
Grid Cell

TCRA Investigation Boundary

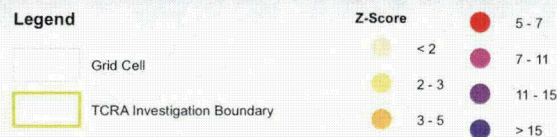
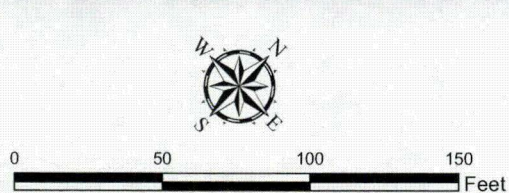
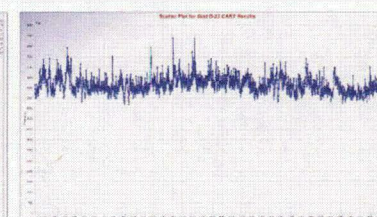
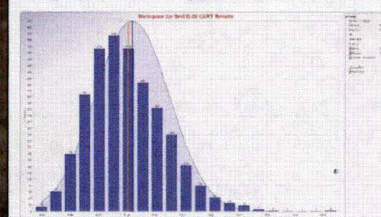
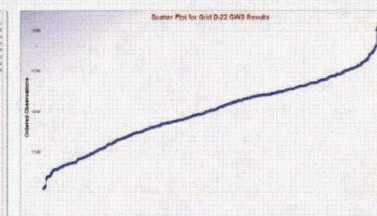
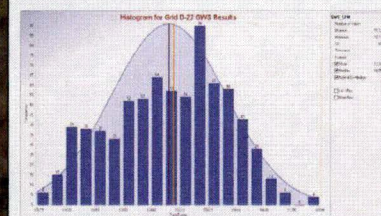
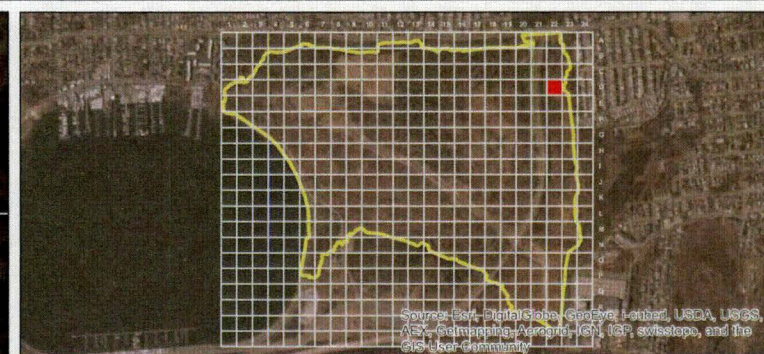
Kriging


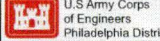
| | |
|-------|-------|
| < 2 | 3 - 4 |
| 2 - 3 | 4 - 5 |
| > 5 | |

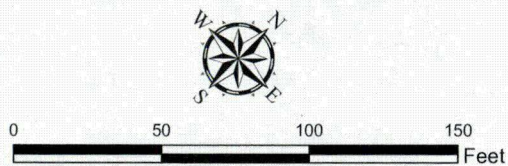
0 50 100 150 Feet



| | | |
|------------------------|-------------------------------------|--------------|
| | | |
| Grid Cell D-22 Kriging | | |
| DESIGNED BY JHG | Great Kills Park, Staten Island, NY | Figure # |
| DRAWN BY JHG | | |
| CHECKED BY CS | Contract No: W92BU-13-C-0010 | June 2014 |



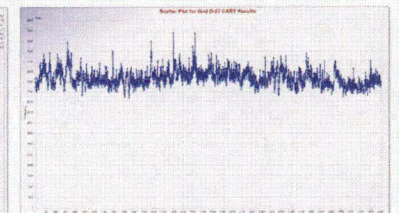
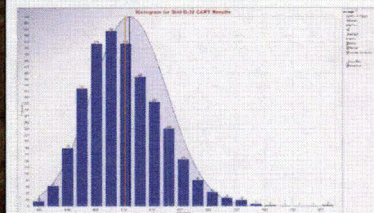
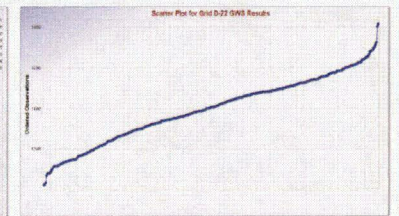
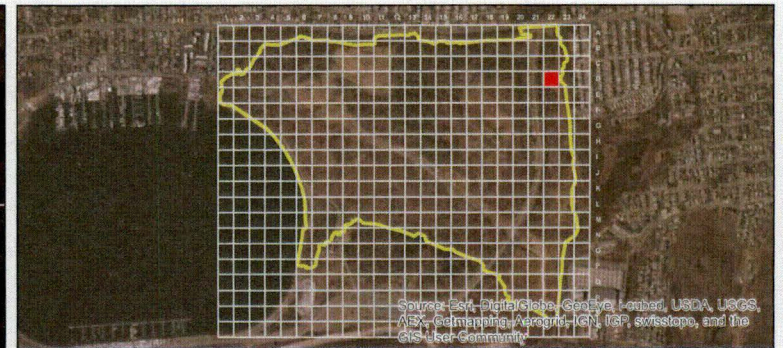
| | | |
|---|-------------------------------------|---|
|  | |  |
| Grid Cell D-22 Kriging | | |
| DESIGNED BY JHG | Great Kills Park, Staten Island, NY | Figure # |
| DRAWN BY JHG | | |
| CHECKED BY CIS | Contract No: W92BU-13-C-0010 | June 2014 |





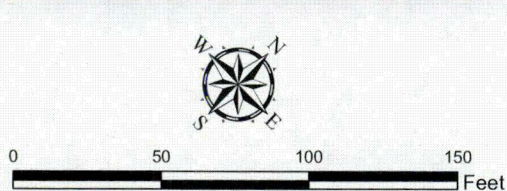
Legend

- Grid Cell
- TCRA Investigation Boundary

- Z-Score**
- < 2
 - 2 - 3
 - 3 - 5
 - 5 - 7
 - 7 - 11
 - 11 - 15
 - > 15



| | | | |
|---|--|---|--|
|  | TIDEWATER INC <small>CONCEPT • DESIGN • PROJECT MANAGEMENT</small> |  | U.S Army Corps of Engineers Philadelphia District |
| Grid Cell D-22 Kriging | | | |
| DESIGNED BY JHG | Great Kills Park, Staten Island, NY | | Figure # |
| DRAWN BY JHG | | | |
| CHECKED BY CG | | | |
| Contract No: W92BU-13-C-0010 | | | June 2014 |



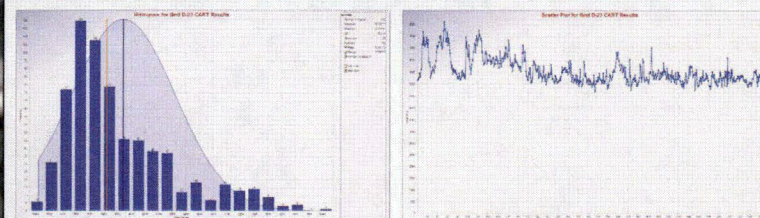
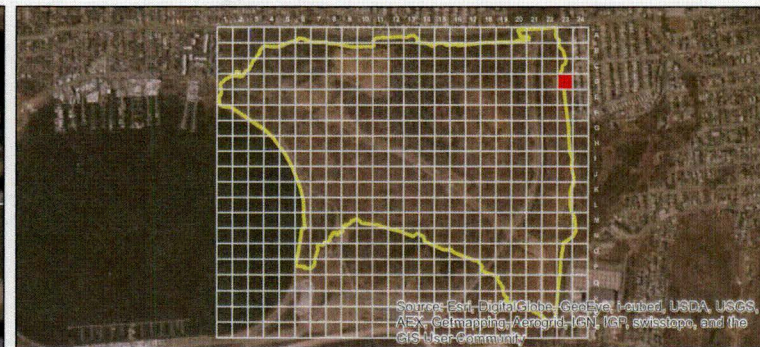
Legend

Grid Cell

TCRA Investigation Boundary

Kriging

| | |
|-------|-------|
| < 2 | 3 - 4 |
| 2 - 3 | 4 - 5 |
| | > 5 |



| | | |
|-------------------------------|-------------------------------------|-----------|
| | | |
| Grid Cell D-23 Kriging | | |
| DESIGNED BY JHG | Great Kills Park, Staten Island, NY | Figure # |
| DRAWN BY JHG | | |
| CHECKED BY CG | Contract No: W92BU-13-C-0010 | June 2014 |

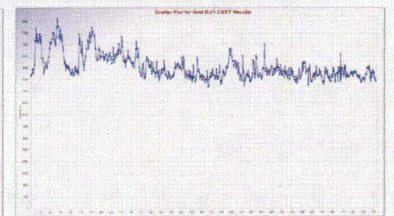
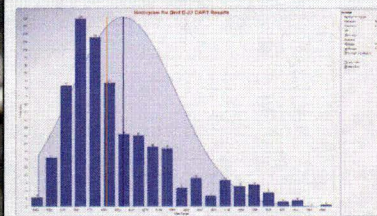
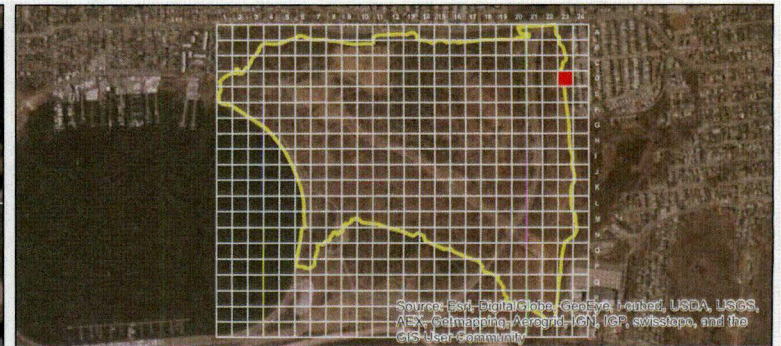
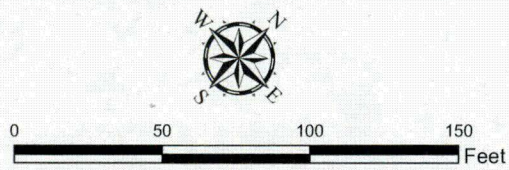
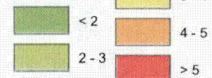




Legend

Grid Cell

TCRA Investigation Boundary

Kriging



| | | | |
|---|-----|---|---|
|  | |  | U.S Army Corps of Engineers Philadelphia District |
| TIDEWATER INC <small>ENGINEERING • CONSTRUCTION • PROGRAM MANAGEMENT</small> | | | |
| Grid Cell D-23 Kriging | | | |
| Great Kills Park, Staten Island, NY | | Figure # | |
| DESIGNED BY | JHG | Contract No: | June 2014 |
| DRAWN BY | JHG | W92BU-13-C-0010 | |
| CHECKED BY | CG | | |



Legend

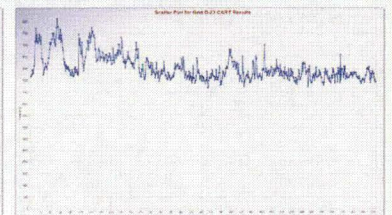
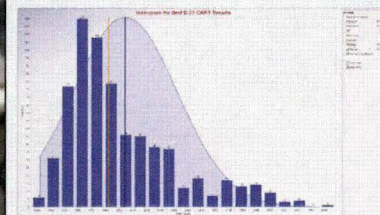
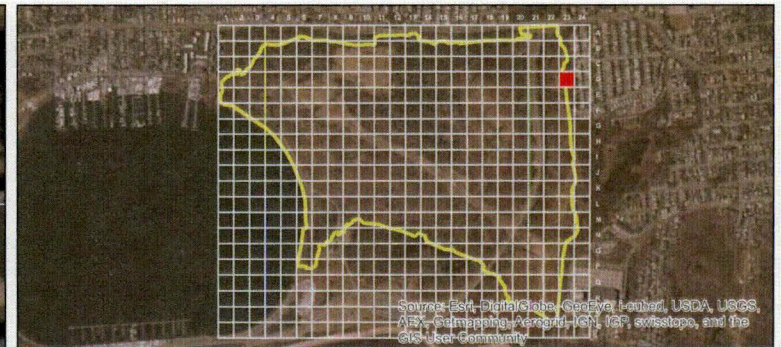
- Grid Cell
- TCRA Investigation Boundary



Z-Score

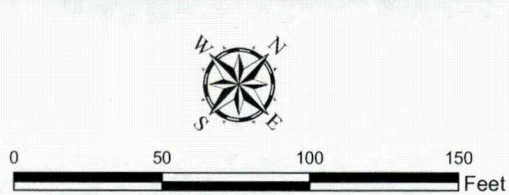
- < 2
- 2 - 3
- 3 - 5
- 5 - 7
- 7 - 11
- 11 - 15
- > 15



0 50 100 150 Feet



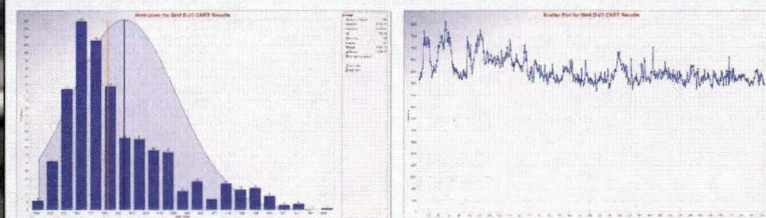
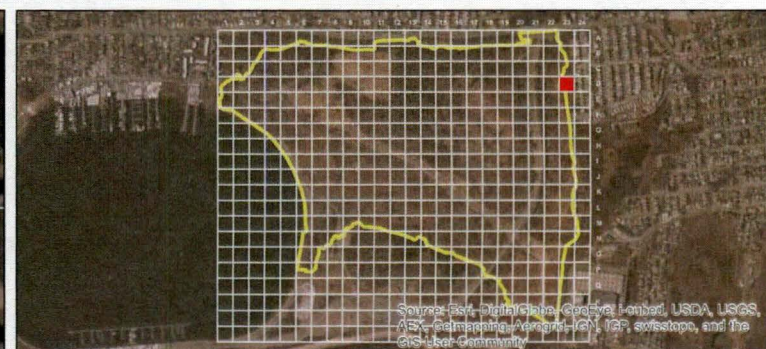
| | | |
|--|-------------------------------------|---|
|  TIDEWATER INC <small>ENGINEERS • ARCHITECTS • PROGRAM MANAGERS</small> | |  U.S. Army Corps of Engineers Philadelphia District |
| Grid Cell D-23 Z-Score | | |
| DESIGNED BY JHG | Great Kills Park, Staten Island, NY | Figure # |
| DRAWN BY JHG | | |
| CHECKED BY CG | | |
| Contract No: W92BU-13-C-0010 | | |
| | | June 2014 |





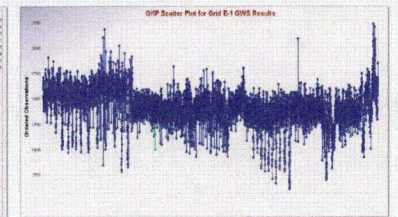
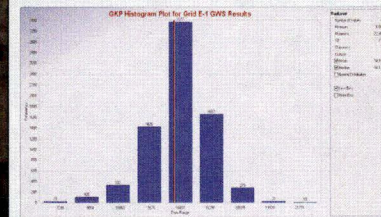
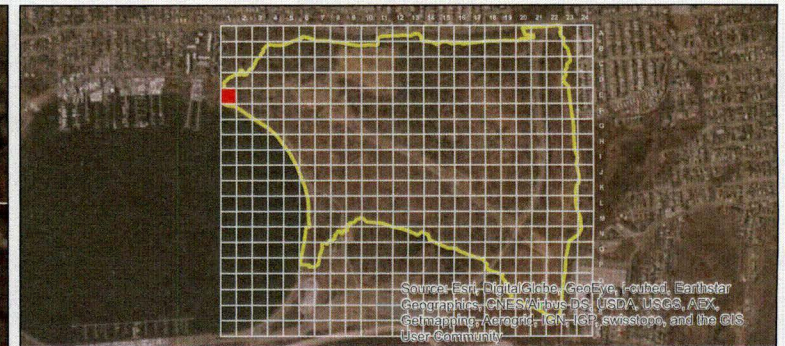
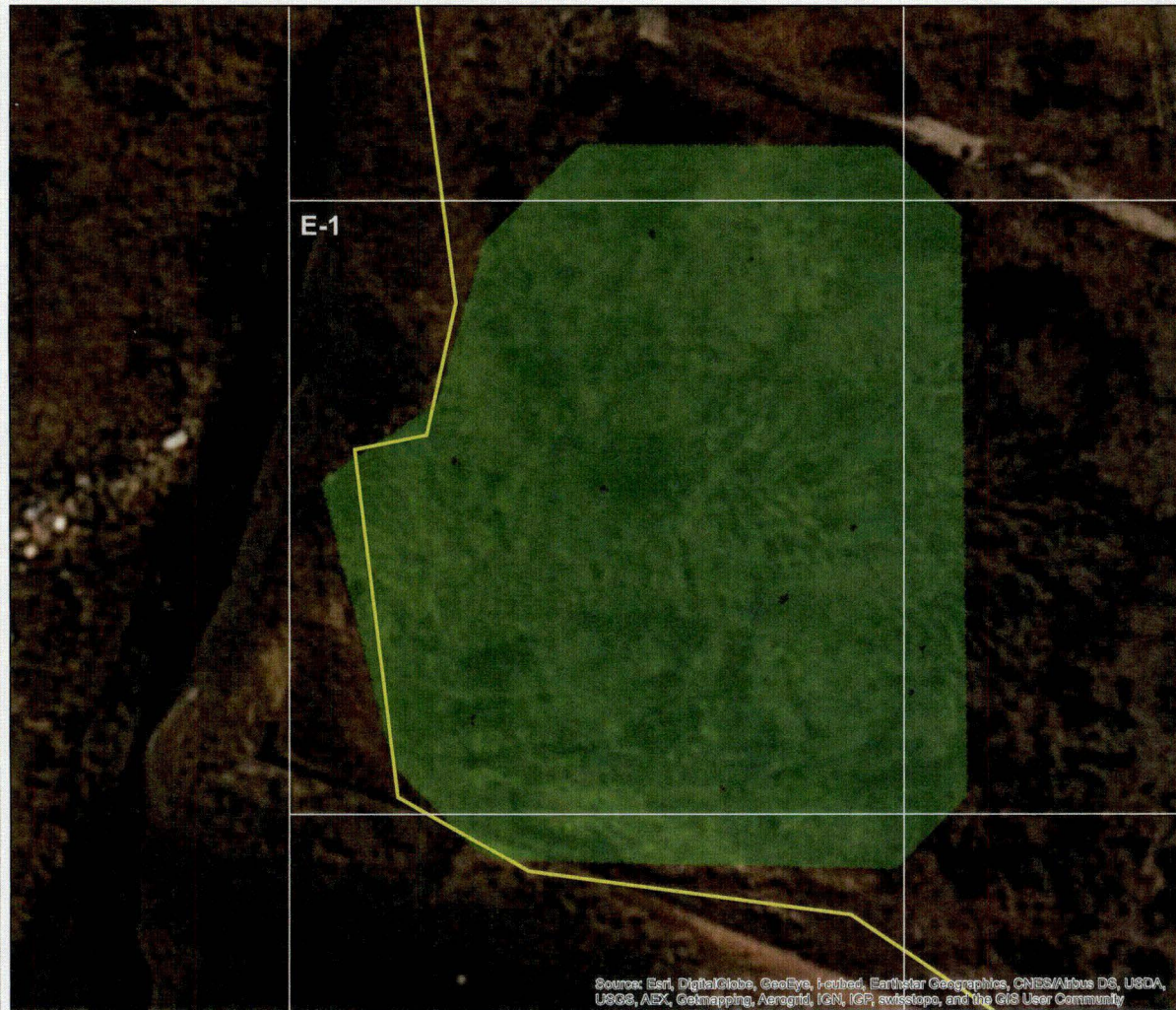
Legend

- Grid Cell
- TCRA Investigation Boundary

- Z-Score**
- < 2
 - 2 - 3
 - 3 - 5
 - 5 - 7
 - 7 - 11
 - 11 - 15
 - > 15



| | | | |
|---|--|---|--|
|  | TIDEWATER INC. <small>ENGINEERS • EROSION • PROGRAM MANAGERS</small> |  | U.S. Army Corps of Engineers Philadelphia District |
| Grid Cell D-23 Z-Score | | | |
| DESIGNED BY | Great Kills Park, Staten Island, NY | Figure # | |
| DRAWN BY | | | |
| CHECKED BY | | | |
| CR | | | |
| Contract No: | | June 2014 | |
| W92BU-13-C-0010 | | | |



Legend

Grid Cell

TCRA Investigation Boundary

Kriging

< 2

2 - 3


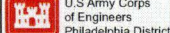
3 - 4

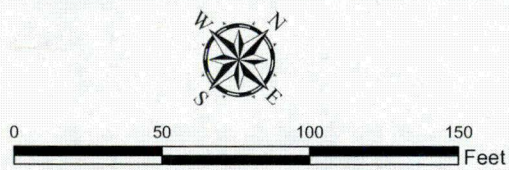
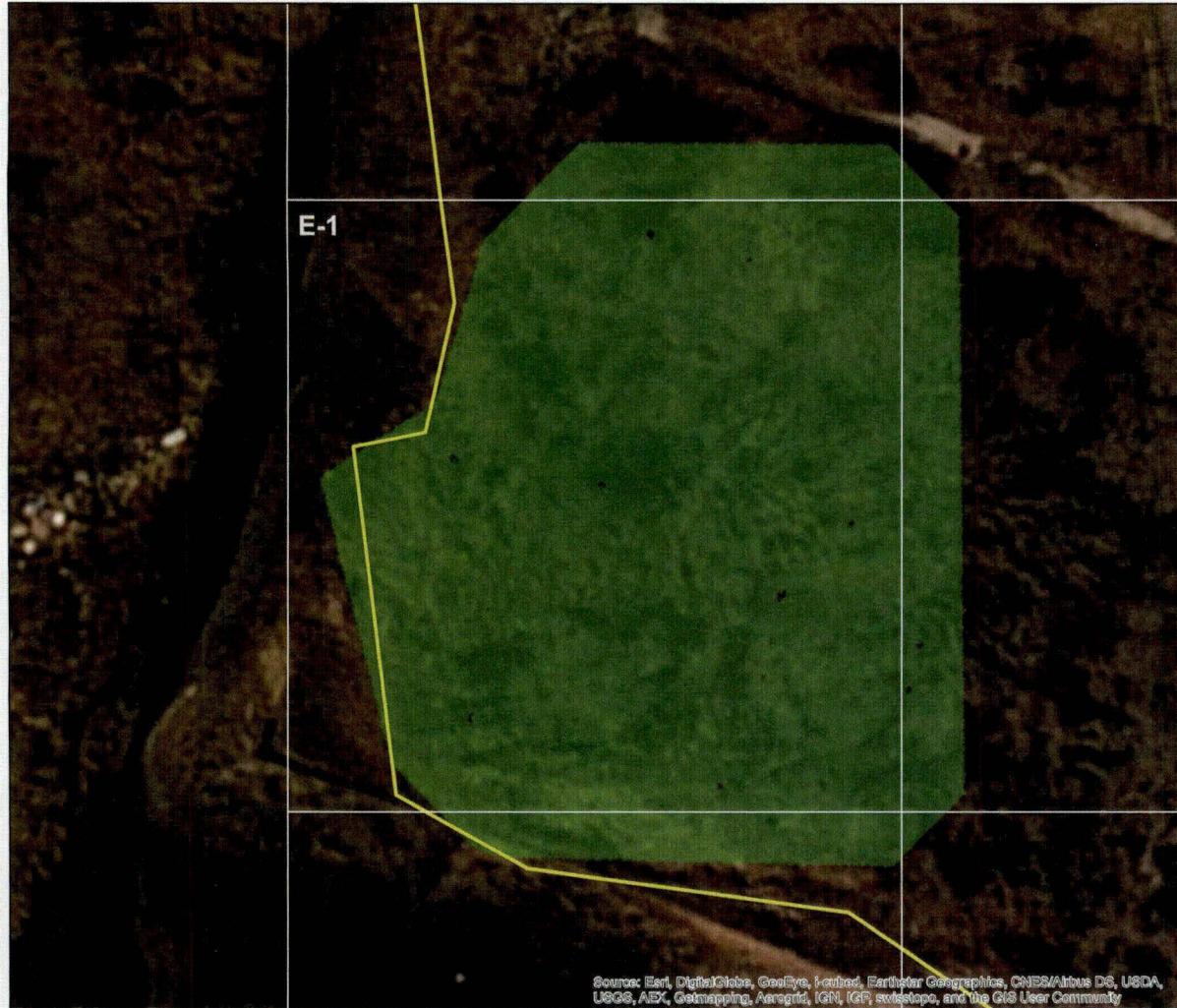
4 - 5

> 5



0 50 100 150 Feet

| | | |
|---|-------------------------------------|-----------|
|   | | |
| Grid Cell E-1 Kriging | | |
| DESIGNED BY JHG | Great Kills Park, Staten Island, NY | Figure # |
| DRAWN BY JHG | | |
| CHECKED BY CG | Contract No: W92BU-13-C-0010 | June 2014 |



Legend

Grid Cell

TCRA Investigation Boundary

Kriging

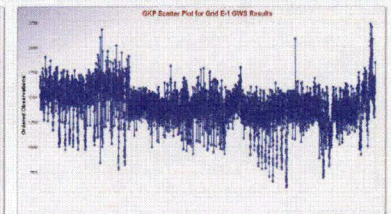
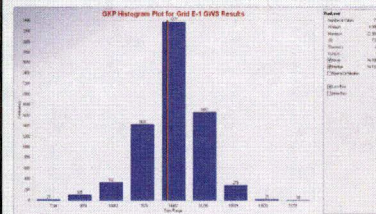
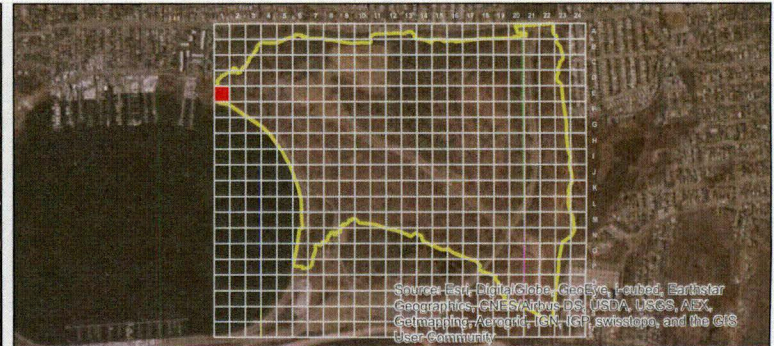
< 2


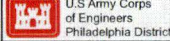
2 - 3

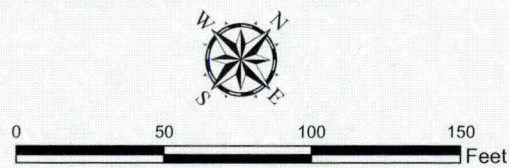
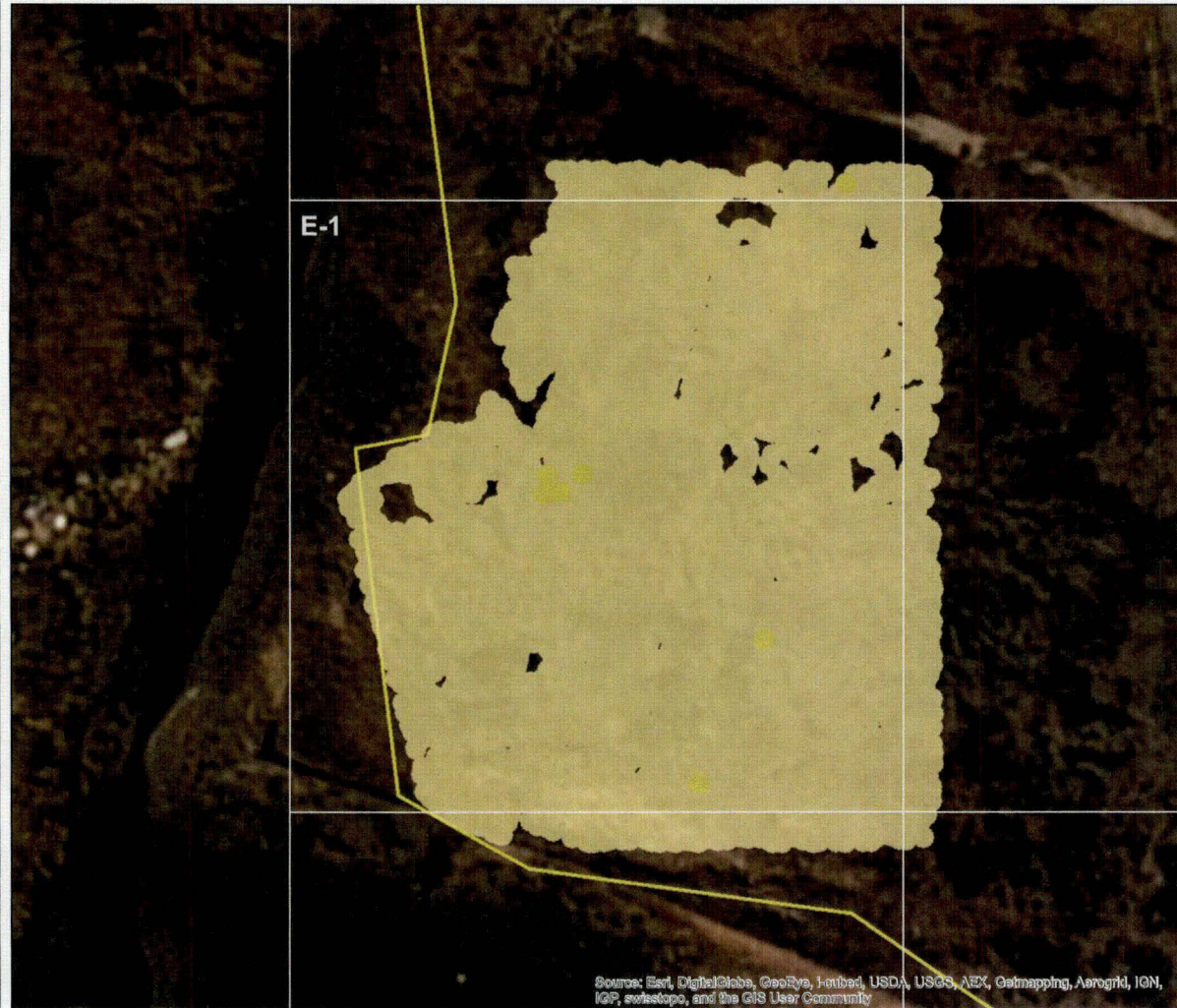
3 - 4

4 - 5

> 5



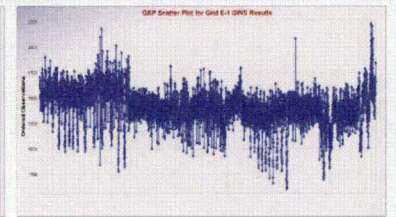
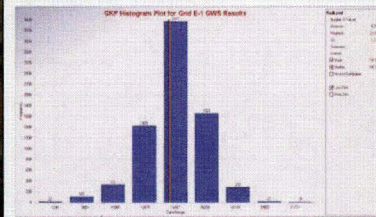
| | | |
|---|-------------------------------------|-----------|
|   | | |
| Grid Cell E-1 Kriging | | |
| DESIGNED BY JHG | Great Kills Park, Staten Island, NY | Figure # |
| DRAWN BY JHG | | |
| CHECKED BY CG | Contract No: W92BU-13-C-0010 | June 2014 |





Legend

- Grid Cell
- TCRA Investigation Boundary

- Z-Score**
- < 2
 - 2 - 3
 - 3 - 5
 - 5 - 7
 - 7 - 11
 - 11 - 15
 - > 15



| | | | |
|---|---|---|--|
|  | TIDEWATER INC <small>DESIGN • CONSTRUCTION • PROJECT MANAGEMENT</small> |  | U.S. Army Corps of Engineers Philadelphia District |
| Grid Cell E-1 Z-Score | | | |
| DESIGNED BY JHG | Great Kills Park, Staten Island, NY | | Figure # |
| DRAWN BY JHG | | | |
| CHECKED BY CG | | | |
| Contract No: W92BU-13-C-0010 | | | |
| | | June 2014 | |