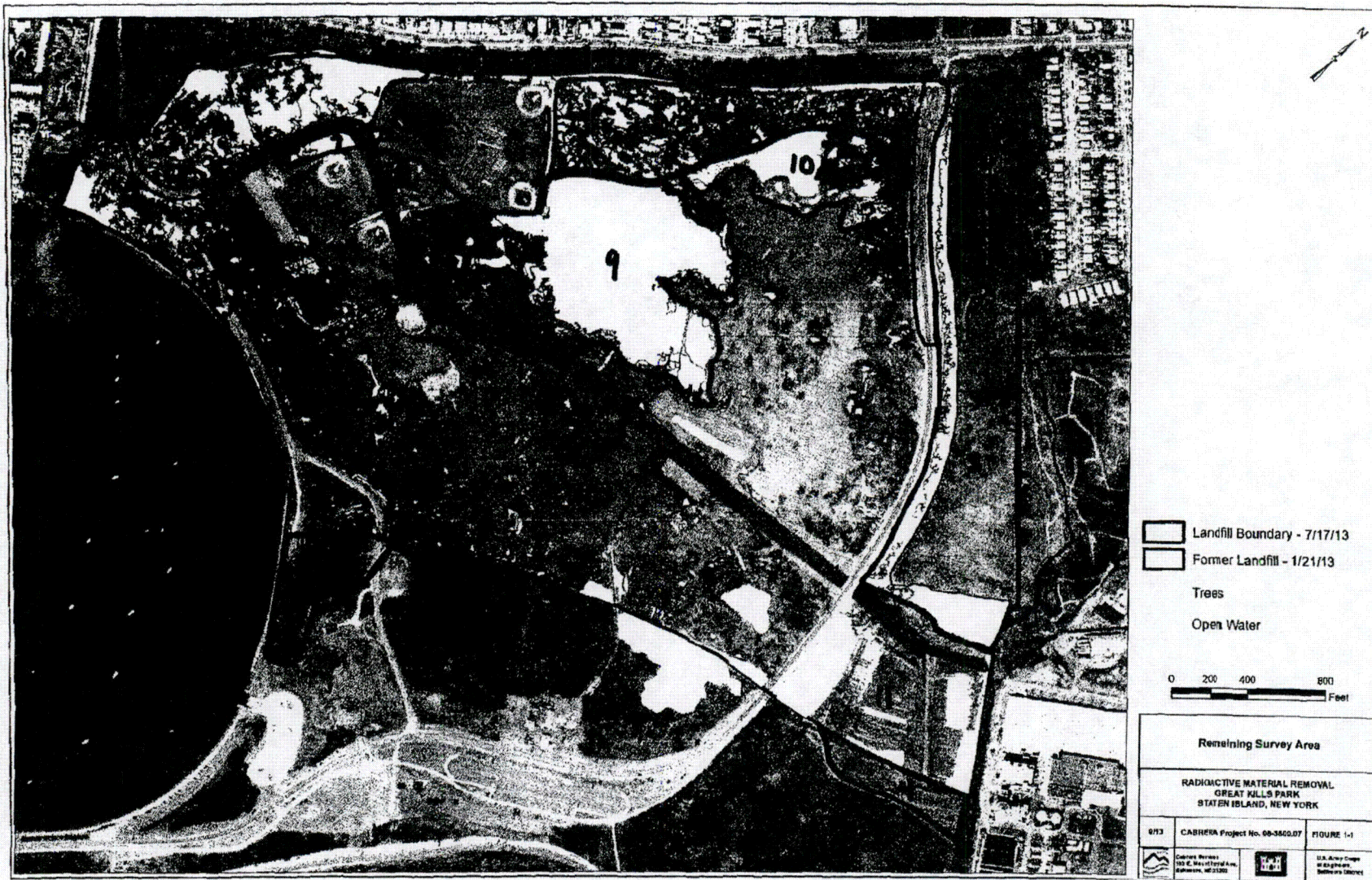




1. AREA 1 Has been cleared. Survey is in Progress.
2. The above mentioned area has been inspected and Verified on 10 January 2014 by USACE Field Representative. Rodolfo Alf.



Areas 2, 9, and 10 are approved GAMMA survey
Rohrbaugh, Co
3/14/2014



Source: Esri, DigitalGlobe, GeoEye, I-cubed, USDA, USGS, AEX, Getmapping, Aerogrid, IGN

Legend

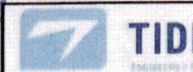
- Project Boundary (263 acres)
- Data gaps (January 15th 2014)
- Gamma (2 meters) and CLASS (3.3 meters) Survey points

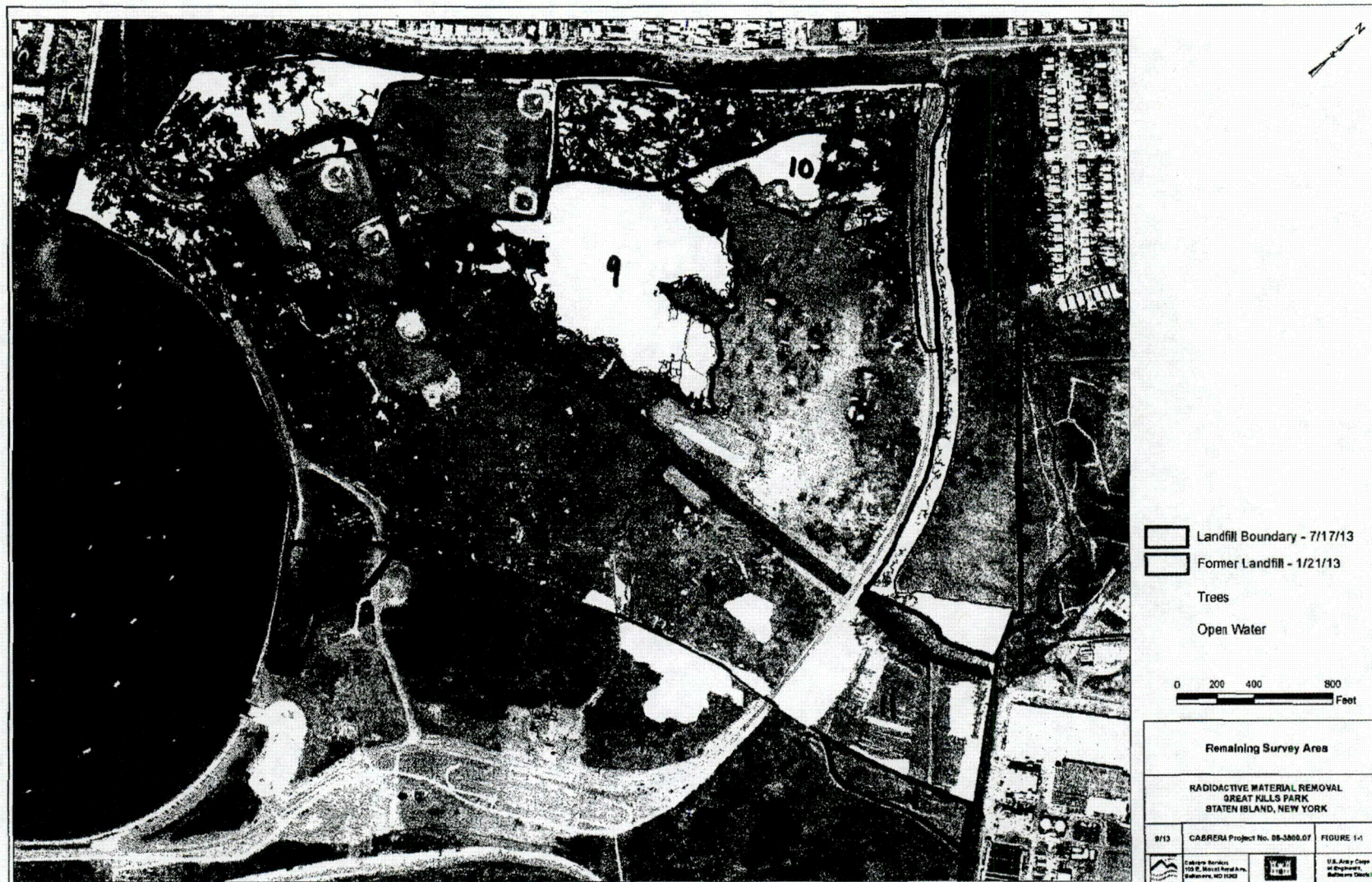
AREA 3 Wetland is APPROVED

For Radioactive Survey

Maria Sw Hill

23 January 2014





AREAS 5 & 7 have been approved for Gamma Survey.

Resubmit the Noel, COR
Army Corps of Engineers

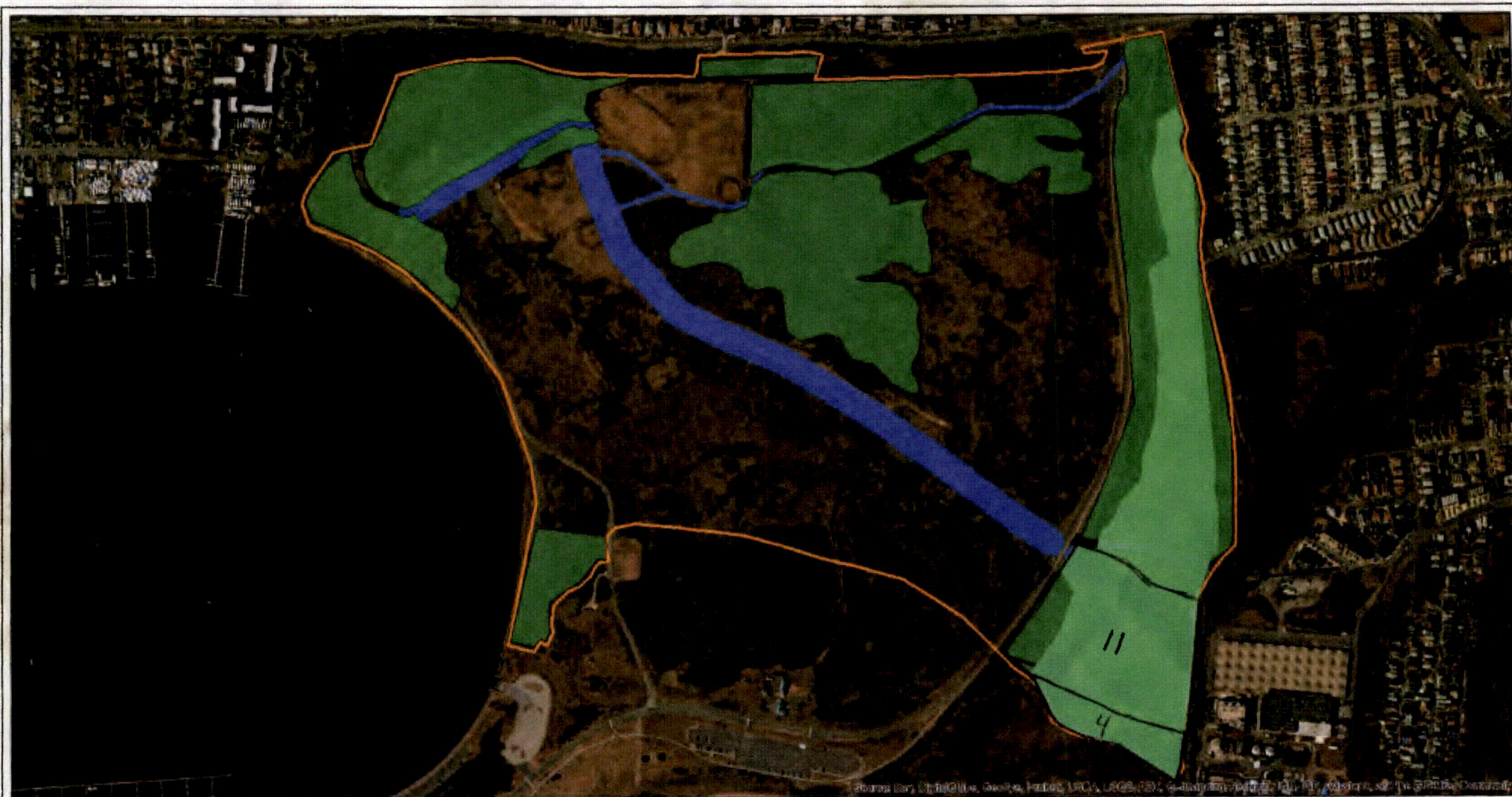
7 MARCH 2014



AREA 8 BRUSH CLEARANCE IS APPROVED.

Rodrigue Noel, COE

ARMY CORP OF ENGINEERS



0 600 1,200 1,800 Feet

Legend

- Project Boundary (263 acres)
- Solid areas show planned mowing (22 acres).
- Brush clearance (103.5 acres)
- Wetland Clearance (32.6 acres)

Document Name: SI_TW_Billing_Jan_2014



TIDEWATER INC



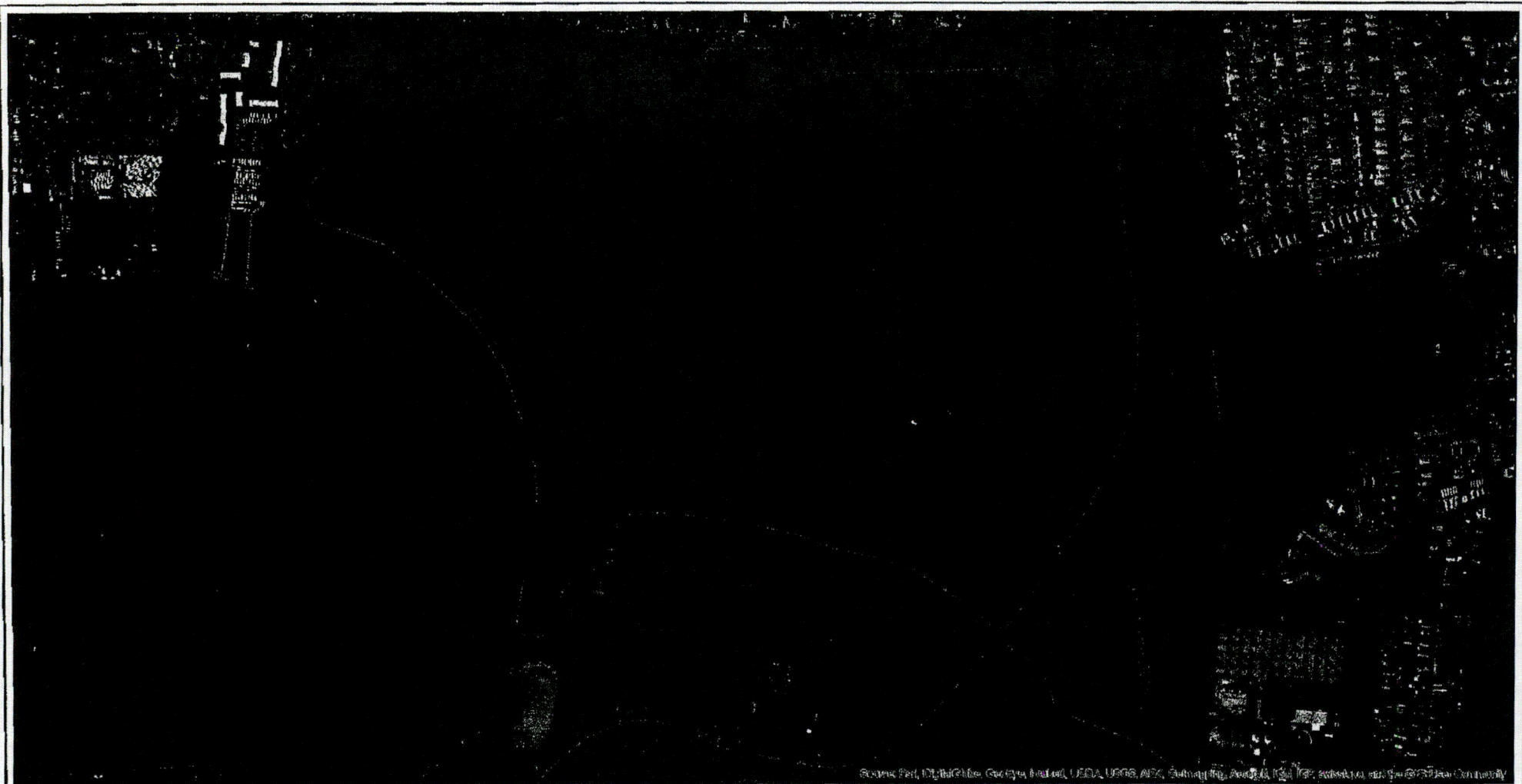
U.S. Army Corps
of Engineers
Philadelphia District

**TW Billing: mowing, brush clearance
and wetland clearance**

| | | |
|--------------------|-------------------------------------|-----------------|
| DESIGNED BY VVF | Great Kills Park, Staten Island, NY | Figure # |
| DRAWN BY VVF | | |
| CHECKED BY CO | Contract No: W92BU-13-C-0010 | January 2014 |

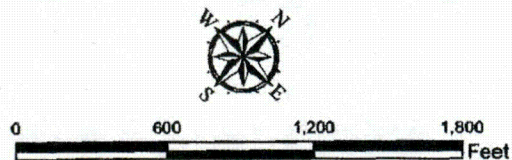
AREAS 4 and 11

Approved To Proceed With Survey
Rodriguez Noel
USACE
1/21/2014



Legend

- Project Boundary (263 acres)
- Data gaps (January 15th 2014)
- Gamma (2 meters) and CLASS (3.3 meters) Survey points



Document Name: SI_TW_Billing_Jan_2014_progress_points_gaps

| | | |
|-------------|-------------------------------------|--------------|
| | | |
| Data gaps | | |
| DESIGNED BY | Great Kills Park, Staten Island, NY | Figure # |
| DRAWN BY | | |
| CHECKED BY | Contract No: W92BU-13-C-0010 | January 2014 |
| CO | | |

MARCH 21, 2014

AREA 6 is approved FOR Gamma Radiating Surveys
 RODRIGUE NOEL, COR
 ARMY CORPS OF ENGINEERS