

Explanation

— CEUS seismotectonic zone

Earthquake Epicenters
(by estimated moment magnitude $E[M]$)
Updated CEUS SSC Seismicity Catalog
(1/1/2009 to 12/31/2011)

● 2.90 - 3.99

● 4.00 - 4.99

● 5.00 - 5.80

PSEG Power, LLC

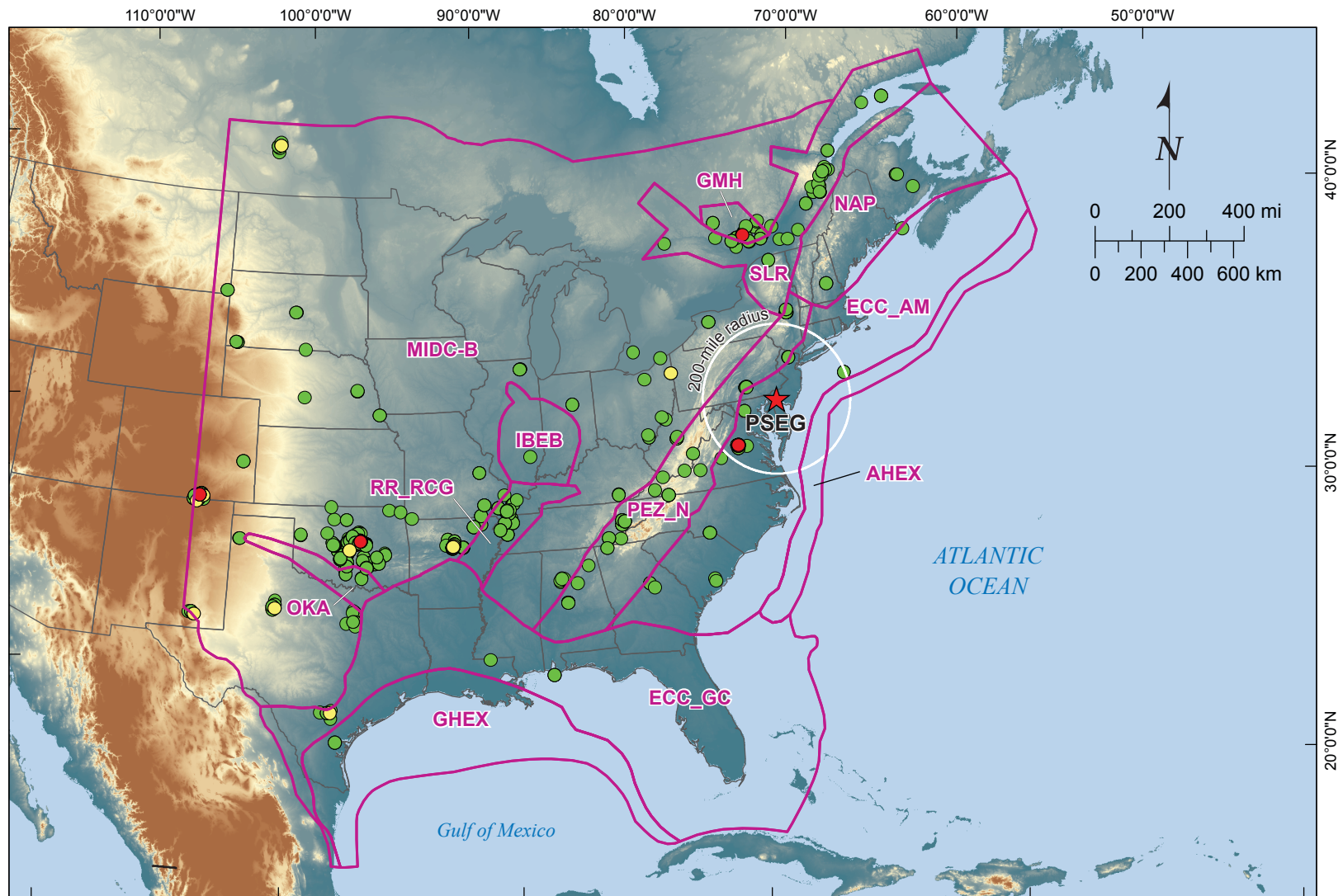
PSEG Site ESPA
Part 2, Site Safety Analysis Report

Updated Seismicity Catalog –
CEUS SSC Seismotectonic Source
Zones (MIDC-A Configuration)

FIGURE 2.5.2-62

Rev 0

United States Nuclear Regulatory Commission	United States Nuclear Regulatory Commission Official Hearing Exhibit
In the Matter of:	PSEG POWER, LLC AND PSEG NUCLEAR, LLC (Early Site Permit Application)
ASLRP #:	15-943-01-ESP-BD01
Docket #:	06200043
Exhibit #:	PSEG004N-MA-BD01
Admitted:	03/24/2016
Rejected:	
Other:	
Identified:	03/24/2016
Withdrawn:	
Stricken:	



Explanation

— CEUS seismotectonic zone

Earthquake Epicenters
(by estimated moment magnitude $E[M]$)
Updated CEUS SSC Seismicity Catalog
(1/1/2009 to 12/31/2011)

● 2.90 - 3.99

● 4.00 - 4.99

● 5.00 - 5.80

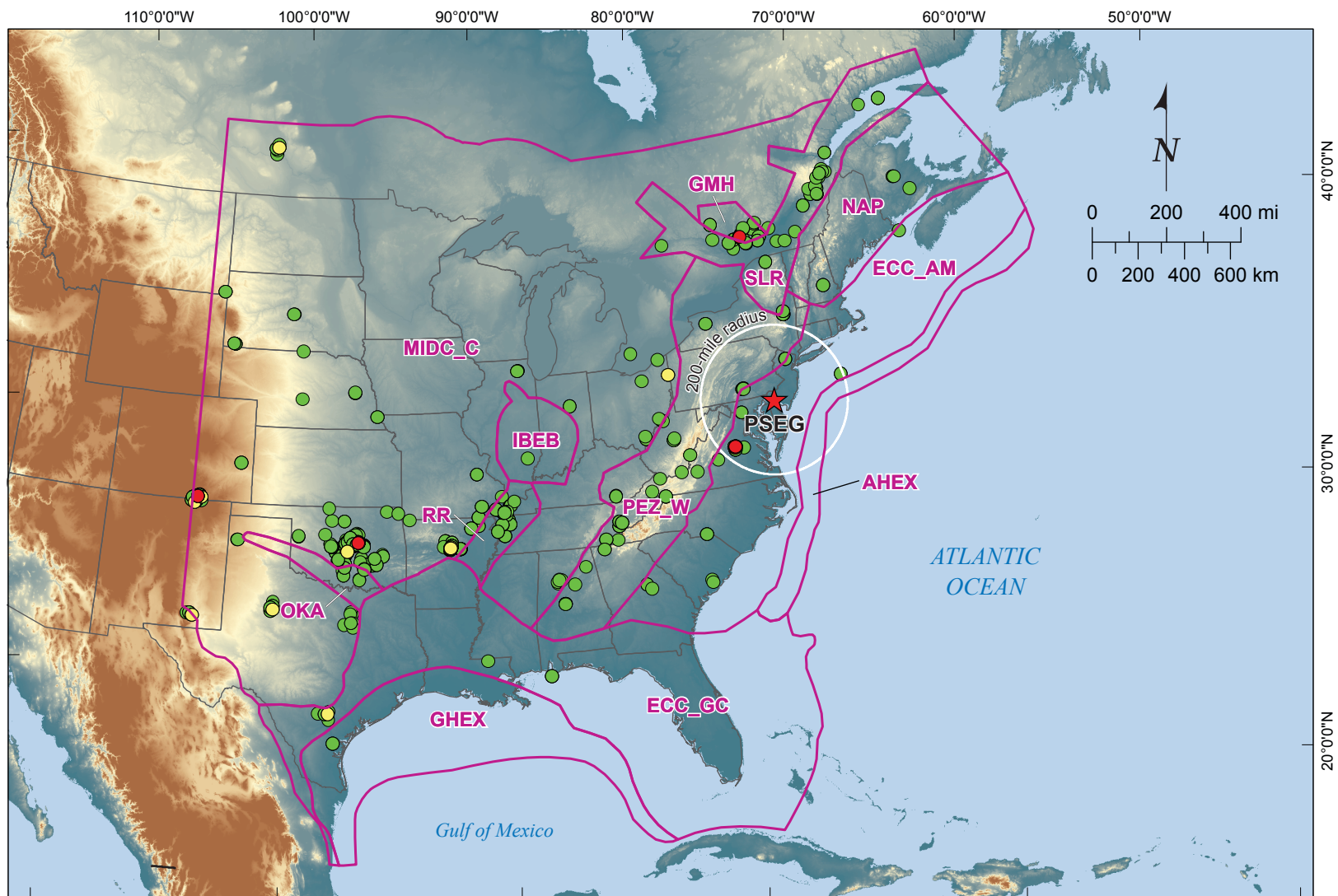
PSEG Power, LLC

PSEG Site ESPA
Part 2, Site Safety Analysis Report

Updated Seismicity Catalog –
CEUS SSC Seismotectonic Source
Zones (MIDC-B Configuration)

FIGURE 2.5.2-63

Rev 0



Explanation

— CEUS seismotectonic zone

Earthquake Epicenters
(by estimated moment magnitude $E[M]$)
Updated CEUS SSC Seismicity Catalog
(1/1/2009 to 12/31/2011)

● 2.90 - 3.99

● 4.00 - 4.99

● 5.00 - 5.80

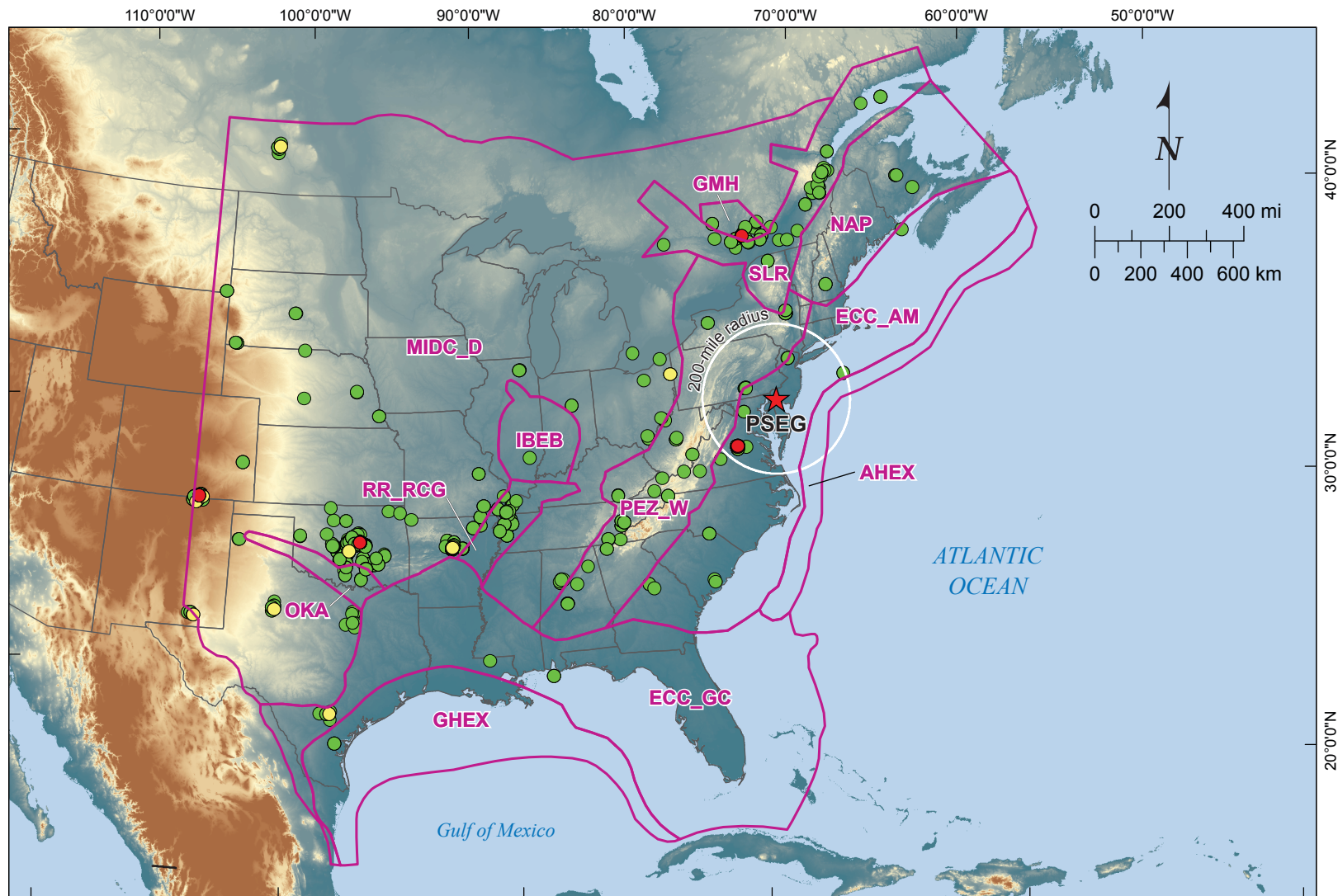
PSEG Power, LLC

PSEG Site ESPA
Part 2, Site Safety Analysis Report

Updated Seismicity Catalog –
CEUS SSC Seismotectonic Source
Zones (MIDC-C Configuration)

FIGURE 2.5.2-64

Rev 0



Explanation

— CEUS seismotectonic zone

Earthquake Epicenters
(by estimated moment magnitude $E[M]$)
Updated CEUS SSC Seismicity Catalog
(1/1/2009 to 12/31/2011)

● 2.90 - 3.99

● 4.00 - 4.99

● 5.00 - 5.80

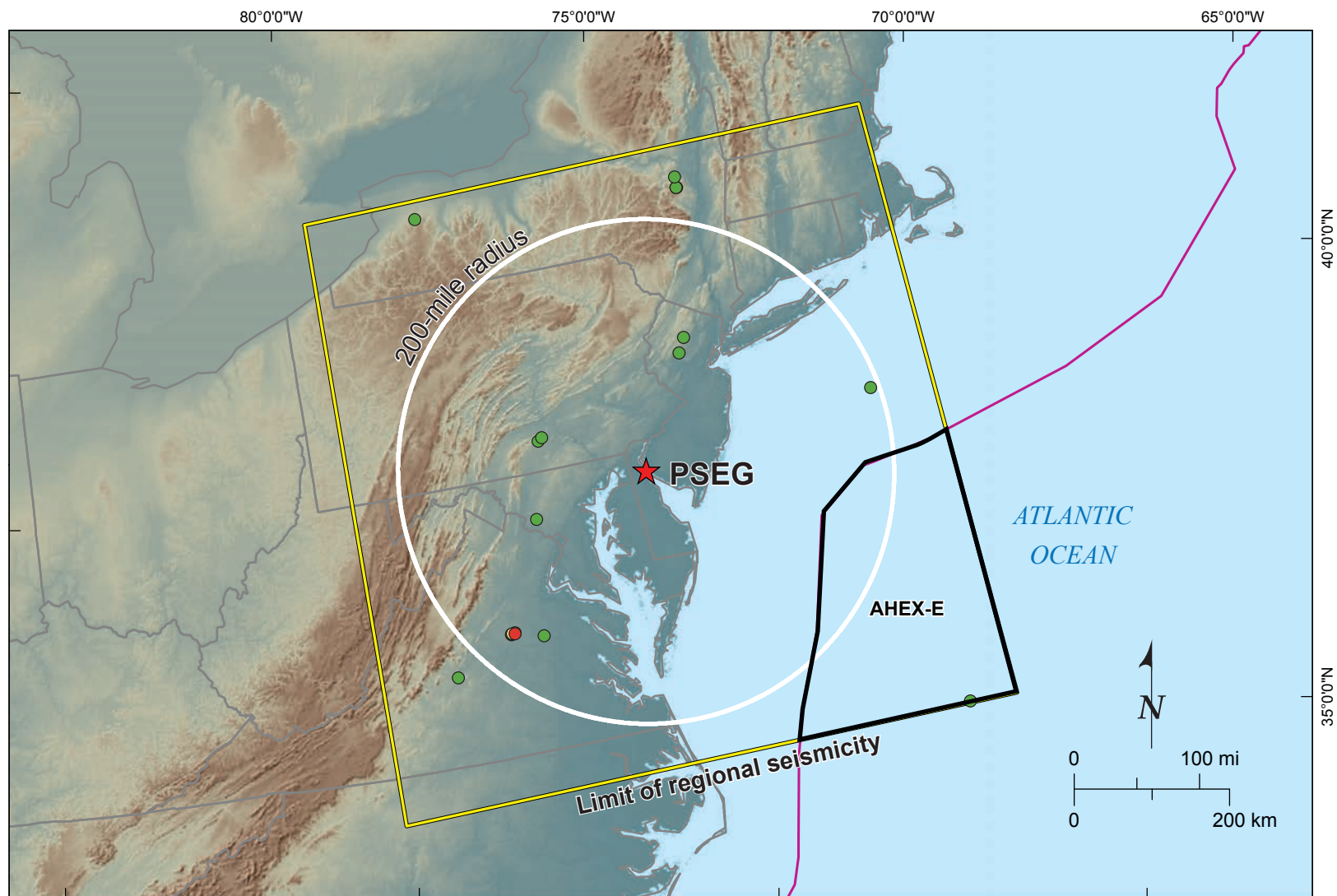
PSEG Power, LLC

PSEG Site ESPA
Part 2, Site Safety Analysis Report

Updated Seismicity Catalog –
CEUS SSC Seismotectonic Source
Zones (MIDC-D Configuration)

FIGURE 2.5.2-65

Rev 0



Explanation

- CEUS seismotectonic zone
- AHX-E seismic source zone

Earthquake Epicenters
(by estimated moment magnitude E[M])
Updated CEUS SSC Seismicity Catalog
(1/1/2009 to 12/31/2011)

- 2.90 - 3.99
- 4.00 - 4.99
- 5.00 - 5.80

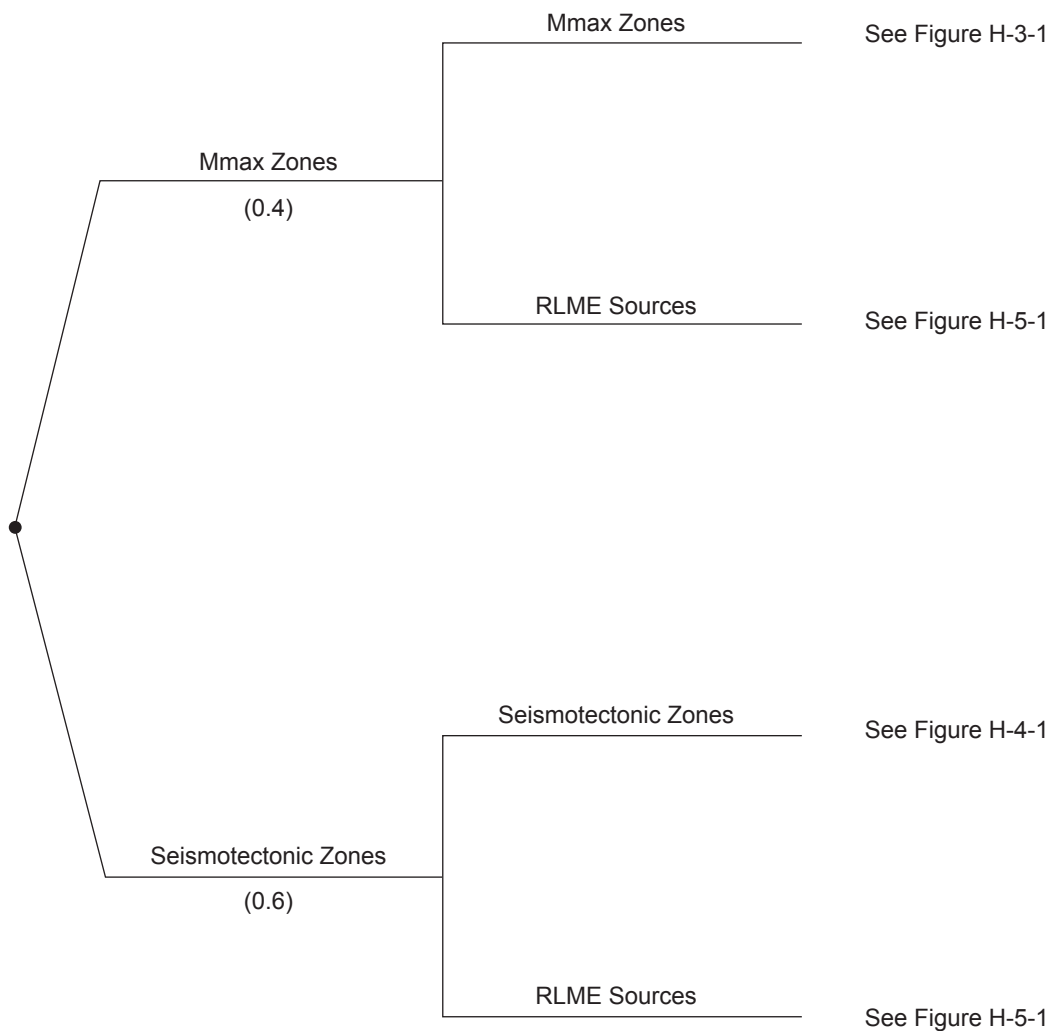
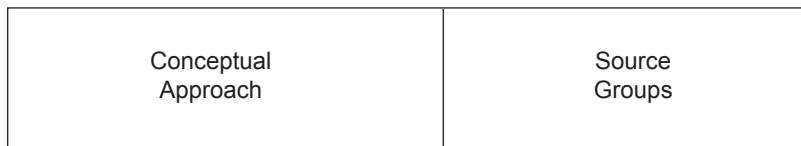
PSEG Power, LLC

PSEG Site ESPA
Part 2, Site Safety Analysis Report

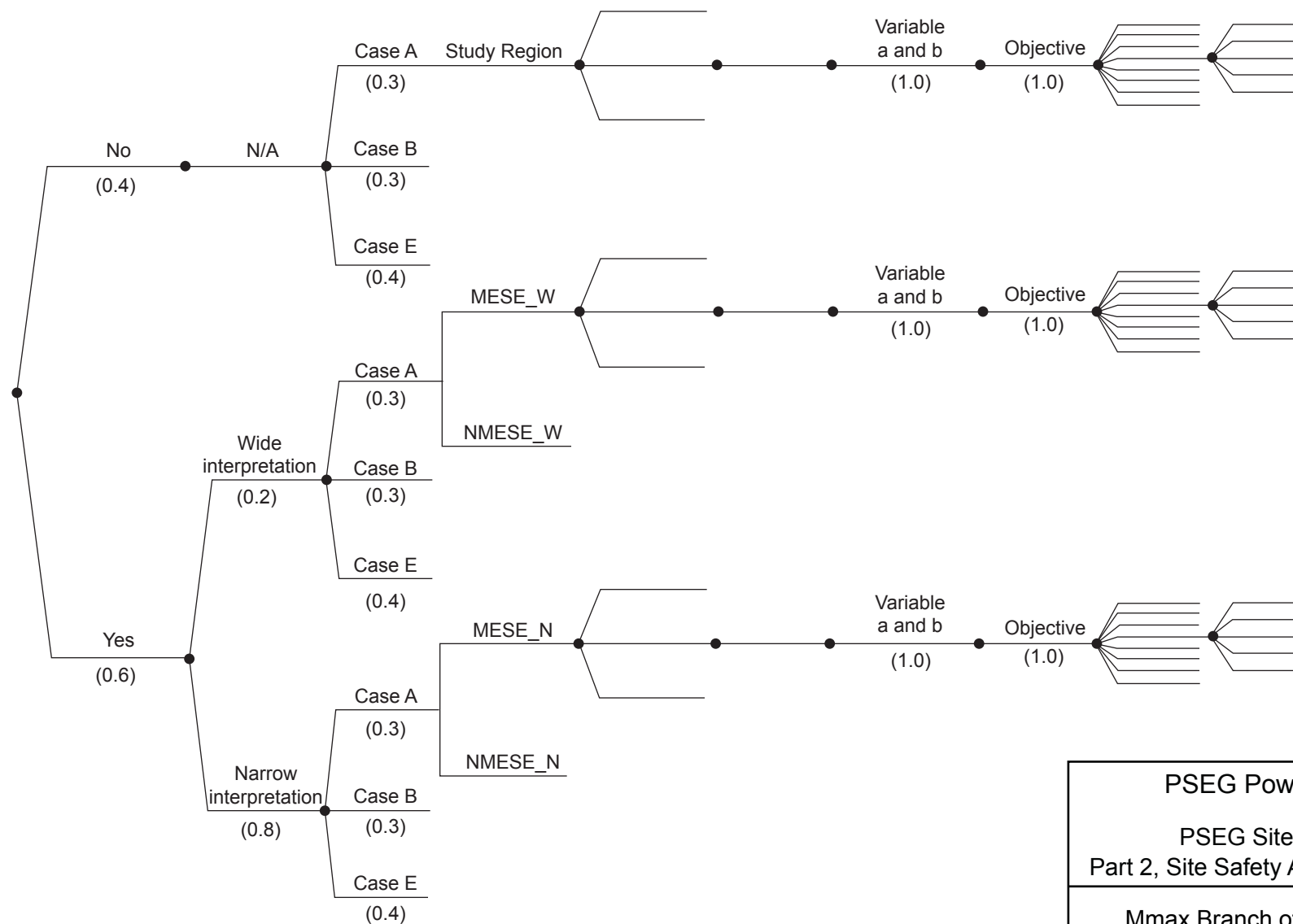
Regional Catalog

FIGURE 2.5.2-66

Rev 0



Separation of Mesozoic extended and Non-extended	Mesozoic Extended/ Non-extended Boundary	Magnitude Range Weighting	Regions	Seismogenic Crustal Thickness	Rupture Geometry	Seismicity Spatial Variability Approach	Degree of Smoothing	Seismicity Parameters	Maximum Magnitude
--------------------------------------------------	------------------------------------------	---------------------------	---------	-------------------------------	------------------	-----------------------------------------	---------------------	-----------------------	-------------------



Western Boundary of PEZ	Rough Creek Graben Association	Magnitude Range Weighting	Seismotectonic Zones	Seismogenic Crustal Thickness	Rupture Geometry	Seismicity Spatial Variability Approach	Degree of Smoothing	Seismicity Parameters	Maximum Magnitude
-------------------------	--------------------------------	---------------------------	----------------------	-------------------------------	------------------	-----------------------------------------	---------------------	-----------------------	-------------------

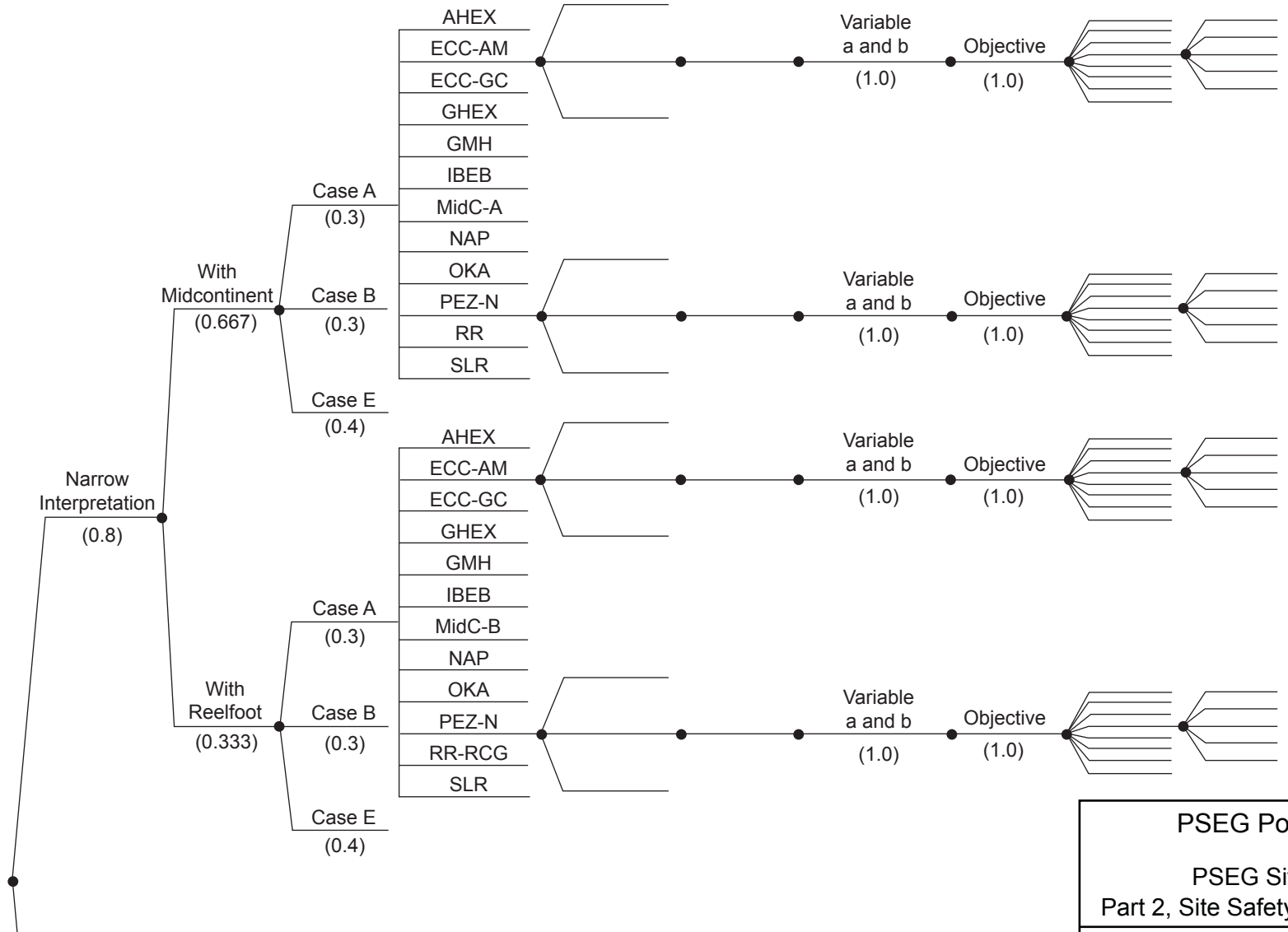


Figure source: Figure H-4-1(a) of NUREG-2115

Western Boundary of PEZ	Rough Creek Graben Association	Magnitude Range Weighting	Seismotectonic Zones	Seismogenic Crustal Thickness	Rupture Geometry	Seismicity Spatial Variability Approach	Degree of Smoothing	Seismicity Parameters	Maximum Magnitude
-------------------------	--------------------------------	---------------------------	----------------------	-------------------------------	------------------	-----------------------------------------	---------------------	-----------------------	-------------------

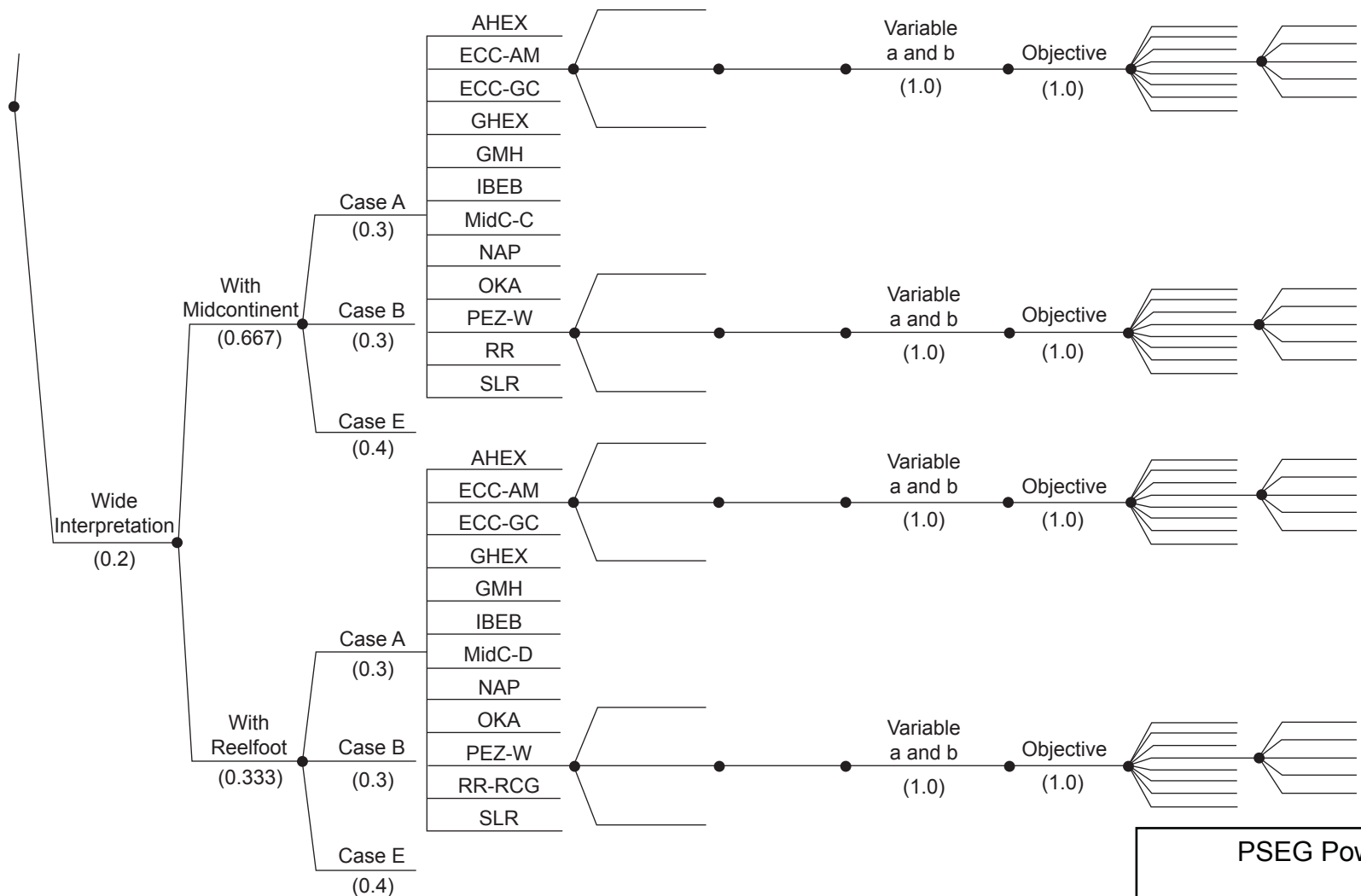


Figure source: Figure H-4-1(b) of NUREG-2115

PSEG Power, LLC

PSEG Site ESPA
Part 2, Site Safety Analysis Report

Seismotectonic Branch of Logic Tree
for CEUS SSC Model (cont.)

FIGURE 2.5.2-69b

Rev 0