

FORM 1  
June, 2010

Wyoming Oil & Gas Conservation Commission  
Office of State Oil and Gas Supervisor  
P. O. Box 2640  
Casper Wyoming 82602

12. County: CONVERSE  
9. API Number: 009-28403

5. Split Estate  
Yes No  
☒ ☐  
If Split Estate, provide the Form 1A.  
Answer Yes, if Surface owner, on disturbed lands, differs at all from Mineral owner.

APPLICATION FOR PERMIT TO: (Submit 1 copy on Fed., 2 on Fee & 3 copies on State Lands)  
DRILL ☒ RE-ENTER/ DEEPEN ☐ RENEW OR EXTEND ☐  
1. CBM Well ☐ Injection ☐ Monitor ☐  
Oil Well ☒ Single Zone ☒ Directional ☐  
Gas Well ☐ Strat. Test ☐ Multiple Zone ☐ Horizontal ☒  
Disposal ☐ Other: Natural Drift ☐  
These in gray require a separate admin. or Comm. approval.

16. Mineral Ownership: Fee ☐ State ☐ Fed ☒  
Mineral Lease #: WYW 154122  
17. Surface Ownership: Fee ☒ State ☐ Fed ☐  
Yes No 6. Well Spacing:  
☒ ☐ Does this well conform to Chapter. 3. Sec.2?  
☐ ☒ Is this well an exception location?  
If yes, attach the approval letter.  
☒ ☐ Is this well in a spaced or exempted area?  
If yes, Docket No. or Rule FEDERAL UNIT

INFORMATION ON THIS PAGE WILL BE RELEASED TO THE PUBLIC.

2. Operator: CHESAPEAKE OPERATING INC  
3. Address: 6100 N. WESTERN OKC, OK 73118  
Contact Person: LINDSEY MELOTT  
3b. Phone Number: 405-935-8323  
Email: LINDSEY.MELOTT@CHK.COM

7. Unit Name - Unit Number: (for committed lands only)  
SOUTH HYLTON RANCH UNIT  
14. DISTANCE from this well BHL to the nearest unit boundary or uncommitted lands: N/A  
15. DISTANCE from this well BHL to the nearest drilling, completed or applied-for well in the same reservoir: N/A  
10. Reservoir(s) NIOBRARA  
13. Field Name: WILDCAT  
8. Well Number and Name: SOUTH HYLTON RANCH UNIT 34-74 24-1H

4. Location. (quarter-quarter and footages):  
Surface (SHL): NW NE 508' FNL & 2250' FEL  
Bottom (BHL): SW NE 1827' FNL & 2250' FEL  
Latitude (SHL, NAD 83): 42.90891 Longitude (SHL, NAD 83): 105.68115  
Latitude (BHL, NAD 83): 42.89081 Longitude (BHL, NAD 83): 105.68116  
11. Section, Township & Range, Lot, TR (SHL): L / TR S 24 T 34N , R 74W  
11a. Section, Township & Range, Lot, TR (BHL): S 25 T 34N , R 74W  
18. DISTANCE: Is this location less than 350 feet from water supplies, residences, schools, parks, hospitals, churches, businesses or other places where people are known to congregate? No ☒ Yes ☐  
19. Proposed depth: 19,231' MD- 12,056' TVD  
21. Ungraded Elevation: 5369.2'  
21a. Graded Elevation: 5367'

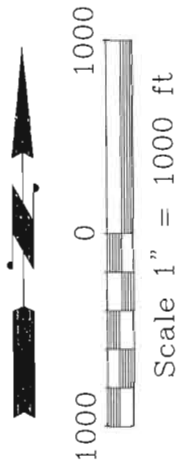
22. PROPOSED SURFACE & PRODUCTION CASING & CEMENTING PROGRAM  
SIZE OF HOLE SIZE OF CASING Lb/ Foot API Grade NEW OR USED CENTRALIZERS DEPTH (MD) Sx of CEMENT (API) CLASS  
17-1/2" 13-3/8" 54.5 J-55 NEW 11 0-1,700' 1348  
12-1/4" 9-5/8" 43.5 P-110 NEW 29 0-11,158' 1068  
7-7/8" 5-1/2" 23 P-110 NEW 6 0-19,006' 1117

23. DESCRIPTION OF PROPOSED OPERATIONS: If proposal is to directionally drill or deepen, give pertinent data on subsurface locations, measured and true vertical depth.  
If proposal is to deepen, give data on present productive zone and proposed new productive zone. Give drilling fluids program.  
(NOTE ANY PLANNED OPERATIONS PREVIOUSLY SUBMITTED.)  
Chesapeake Operating Inc. plans to drill a horizontal well to test the Niobrara formation. If productive, casing will be run and well completed. If dry, well will be plugged per WOGCC regulations.  
Simulation data will be sent at a later date on a sundry.  
AA 3-15-11  
Chesapeake requests confidentiality for the maximum time allowed.

25. Signed: Lindsey Melott  
Name Typed: Lindsey Melott  
Title: Sr. Reg. Comp. Spec. Date: 3/4/11  
Phone: 405-935-8323  
20. Type of Bond & No.: Nationwide NM 2634  
Operator: check boxes for included attachments.  
☒ Survey Plat ☒ Form 1B ☒ Directional Plan ☒ Offset Water Well Data  
☒ Form 1A ☒ Drilling & BOP Plans ☐ Stimulation Completion Plan ☒ Offset Well Data  
(The space below is for State Office use)  
Approved By: FEDERAL  
State Oil and Gas Supervisor  
Approval Date: March 16, 2011

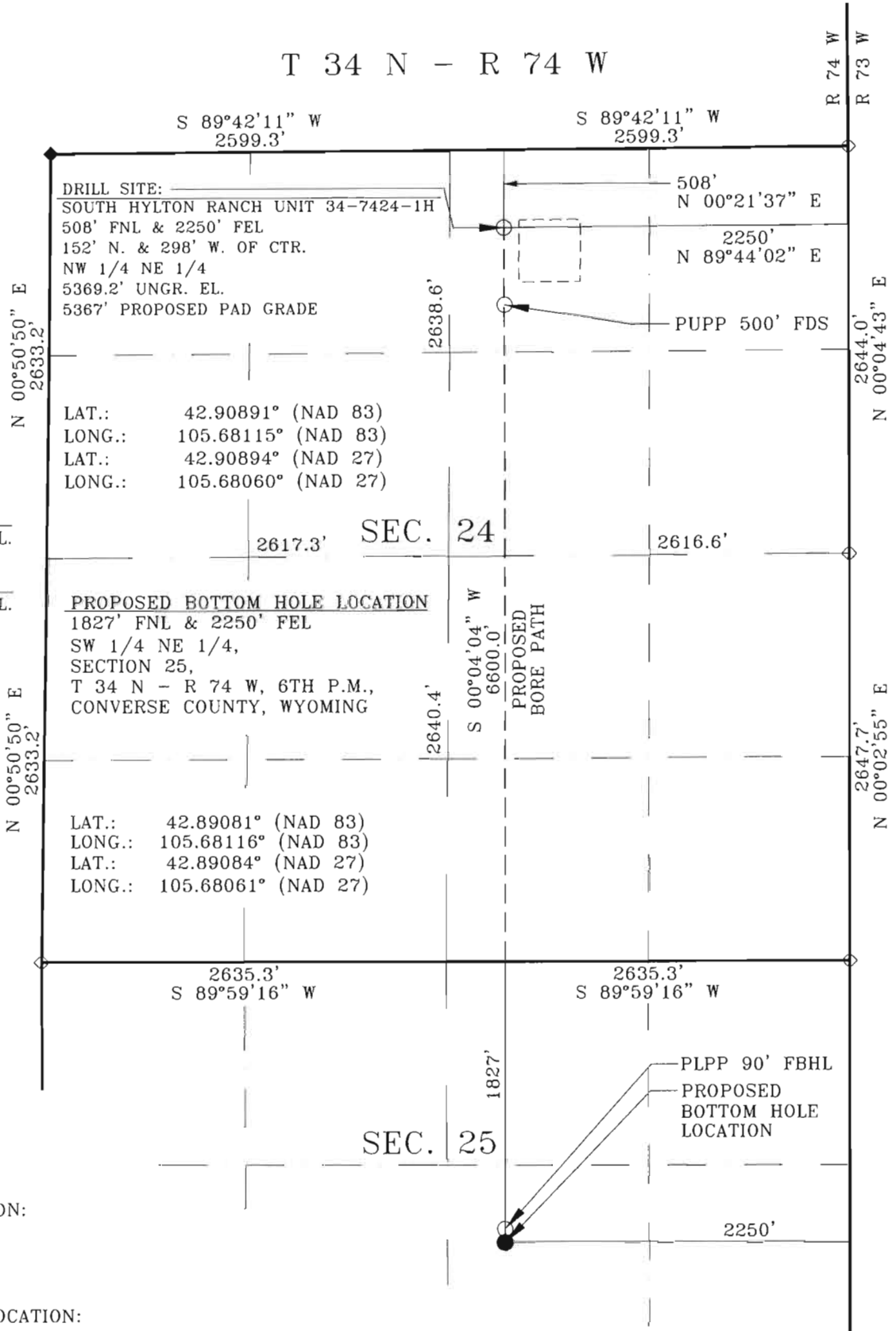
RECEIVED  
MAR - 8 2011  
WYOMING OIL & GAS CONSERVATION COMMISSION  
Conditions of Approval (State Office Use Only):  
Notify the Supervisor at least twenty-four (24) hours before all SPU's and BOP tests by using the API number.  
No completion fluids in the Reserve Pit w/o approval.  
All stimulations must be approved before completing.

T 34 N - R 74 W



300' S. REF.  
5360.0' UNGR. EL.

310' W. REF.  
5348.5' UNGR. EL.



SURFACE LOCATION:  
X: 362312.0  
Y: 817444.8  
NAD 27

BOTTOM HOLE LOCATION:  
X: 362269.1  
Y: 810846.9  
NAD 27

PROPOSED BORE PATH  
NAD 27 AZ 180.3719°  
NAD 27 DISTANCE: 6598.0'  
GROUND DISTANCE: 6600.0'

BASIS OF BEARING:  
GPS GRID BEARINGS

BASIS OF ELEVATION:  
NSRS CORS CORRECTED  
LAT., LONG., HEIGHT,  
GEOID 99

LEGEND

- ◆ = 1979 BRASS CAP, LS 520
  - ◇ = 2010 ALUMINUM CAP, PLS 9328
- ALL COURSES ARE MEASURED

NOTE: THE UPPER PERFORATION POINT  
WILL NOT START ANY CLOSER THAN  
500' FROM DRILL SITE.

THE LOWER PERFORATION POINT IS BACK  
90' FROM TOTAL DEPTH,

Land Surveying Incorporated by President Cevin C. Imus, a registered land surveyor in the state of Wyoming, hereby certifies that this plat was made from data collected during an actual survey performed by Peter Angelos on January 4, 2011 and that the SOUTH HYLTON RANCH UNIT 34-74 24-1H well site was staked and is accurately represented on this plat. The bottom hole location shown on this plat is provided by Chesapeake Operating, Inc. and all coordinates for that position are calculated, not surveyed.



Prepared For:  
CHESAPEAKE OPERATING, INC.

Location:  
SOUTH HYLTON RANCH UNIT 34-74 24-1H  
508' FNL & 2250' FEL  
152' NORTH & 298' WEST OF CENTER  
NW 1/4 NE 1/4 OF SECTION 24,  
T 34 N - R 74 W, 6TH P.M.,  
CONVERSE COUNTY, WYOMING

Prepared By:  
LAND SURVEYING INCORPORATED  
209 NORTH WORKS AVENUE  
GILLETTE, WY 82716



DATE: 01/11/2011 JOB #10-177A FILE: 10177AWP.DWG  
REVISION: MOVE BHL  
CALIBRATION: HIGHLAND LOOP REF: DB1