

June, 2010

Wyoming Oil & Gas Conservation Commission
Office of State Oil and Gas Supervisor
P. O. Box 2640
Casper Wyoming 82602

12. County: **CONVERSE** 9. API Number: **009-28474 JK**

5. Split Estate: ☒ Yes ☐ No
 If Split Estate, provide the Form 1A.
 Answer Yes, if Surface owner, on disturbed lands, differs at all from Mineral owner.

APPLICATION FOR PERMIT TO: (Submit 1 copy on Fed., 2 on Fee & 3 copies on State Lands)

DRILL ☒ RE-ENTER/ DEEPEN ☐ RENEW OR EXTEND ☐

1. CBM Well ☐ Injection ☐ Monitor ☐

Oil Well ☒

Single Zone ☒

Directional ☐

These in gray
require a separate
admin. or Comm.
approval.

Gas Well ☐ Strat. Test ☐

Multiple Zone ☐

Horizontal ☒

Disposal ☐

Other: _____

Natural Drift ☐

INFORMATION ON THIS PAGE WILL BE RELEASED TO THE PUBLIC.

2. Operator: **CHESAPEAKE OPERATING INC**

3. Address: **6100 N. WESTERN OKC, OK 73118**

Contact Person:

SARAH RODRIGUEZ

3b. Phone Number:

405-935-7987

Email:

sarah.rodriguez@chk.com

4. Location, (quarter-quarter and footages):

Surface (SHL): NW SE 2,188 FSL
 2,273 FEL

11. Section, Township & Range, Lot, TR (SHL):
 L/ S 19 T 34N , R 72W
 TR

Bottom (BHL): NW SW 1,648 FSL
 660 FWL

11a. Section, Township & Range, Lot, TR (BHL):
 S 18 T 34N , R 72W

Latitude (SHL, NAD 83):

42.9021

Longitude (SHL, NAD 83):

-105.54357

Latitude (BHL, NAD 83):

42.91526

Longitude (BHL, NAD 83):

-105.55228

18. DISTANCE: Is this location less than 350 feet from water supplies, residences, schools, parks, hospitals, churches, businesses or other places where people are known to congregate? No ☒ Yes ☐

19. Proposed depth:

18,455-MD 12,008-TVD

21. Ungraded Elevation:

5,046.60

21a. Graded Elevation:

5,046

22. PROPOSED SURFACE & PRODUCTION CASING & CEMENTING PROGRAM

SIZE OF HOLE	SIZE OF CASING	Lb/ Foot	API Grade	NEW OR USED	CENTRALIZERS	DEPTH (MD)	Sx of CEMENT (API)	CLASS
13-1/2"	10-3/4"	45.5	J-55	NEW	11	SURF-1,700'	717	
9-7/8"	7-5/8"	29.7	P-110	NEW	32	SURF-10,803'	792	
6-3/4"	5-1/2"	20	P-110	NEW	16	SURF-10,603'	927	
6-3/4"	4-1/2"	13.5	P-110	NEW	16	10,603'-18,455'	927	

23. DESCRIPTION OF PROPOSED OPERATIONS: If proposal is to directionally drill or deepen, give pertinent data on subsurface locations, measured and true vertical depth.

If proposal is to deepen, give data on present productive zone and proposed new productive zone. Give drilling fluids program.

(NOTE ANY PLANNED OPERATIONS PREVIOUSLY SUBMITTED)

CHESAPEAKE OPERATING INC. PROPOSES TO DRILL A HORIZONTAL WELL TO TEST THE NIOBRARA FORMATION. IF PRODUCTIVE, CASING WILL BE RUN & WELL COMPLETED. IF DRY, WELL WILL BE PLUGGED PER WOGCC REGULATIONS. COMPLETION PLAN WILL BE SENT ON A SUNDAY AT A LATER DATE.

WOGCC DATE STAMP

RECEIVED

JUL -5 2011

WYOMING OIL & GAS
 CONSERVATION COMMISSION

25. Signed: *Sarah Rodriguez*

Title: **Regulatory Analyst**

Date: **7/1/2011**

Name Typed: **SARAH RODRIGUEZ**

Phone: **405-935-7987**

20. Type of **OK** **NATIONWIDE NM 2634**
 Bond & No.:

Operator: check boxes for included attachments.
☒ Survey Plat ☒ Form 1B ☒ Directional Plan ☒ Offset Water Well Data
☒ Form 1A ☒ Drilling & BOP Plans ☐ Stimulation Completion Plan ☒ Offset Well Data

(The space below is for State Office use)

Approved By:

Mark W. Lutz
 State Oil and Gas Supervisor

Approval Date:

AUGUST 10, 2011

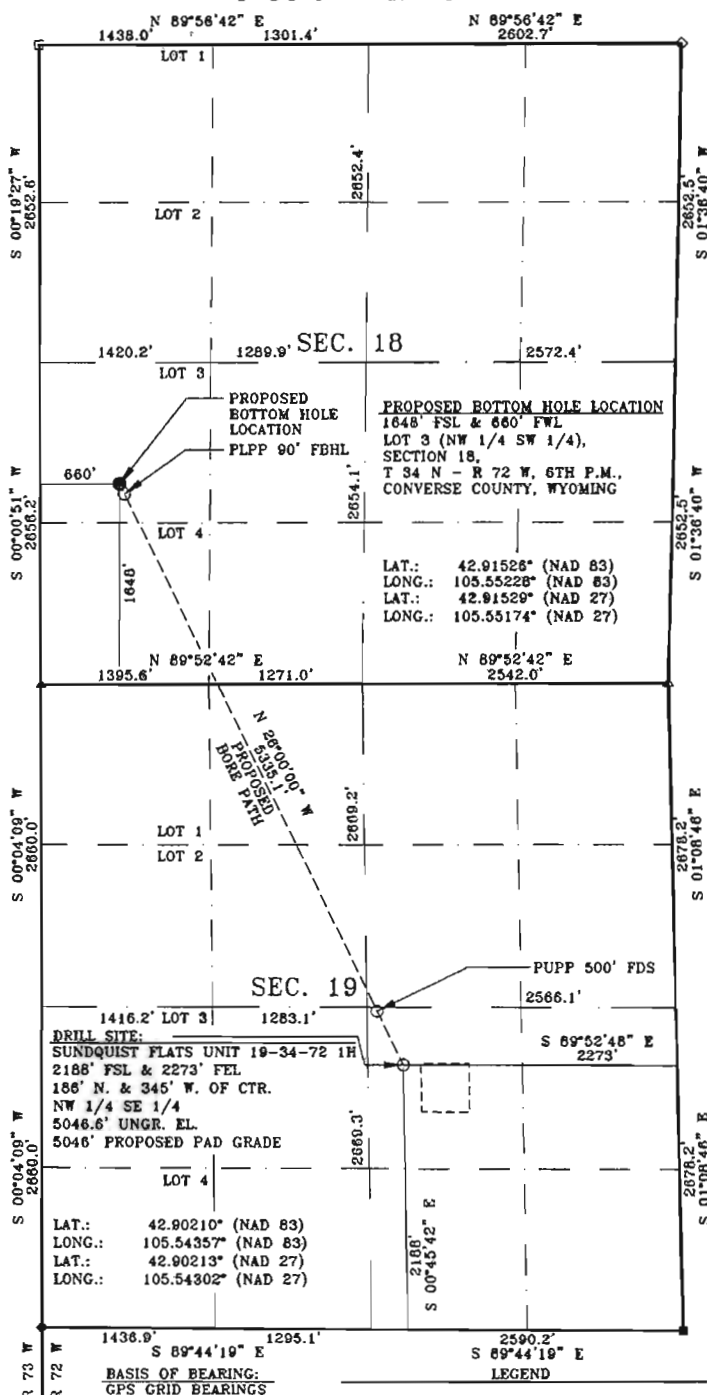
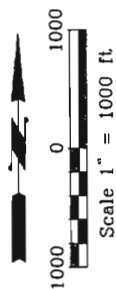
Conditions of Approval (State Office Use Only):

Notify the Supervisor at least twenty-four (24) hours before all SPUDs and BOP tests by using the API number.

No completion fluids in the Reserve Pit w/o approval.

All stimulations must be approved before completing.

T 34 N - R 72 W



300' W. REF.
5048.0' UNGR. EL.

350' N. REF.
5058.0' UNGR. EL.

SURFACE LOCATION:
X: 399159.8
Y: 814768.0
NAD 27

BOTTOM HOLE LOCATION:
X: 398847.1
Y: 819574.0
NAD 27

PROPOSED BORE PATH
NAD 27 AZ 334.3044°
NAD 27 DISTANCE: 5333.4'
GROUND DISTANCE: 5335.1'

NOTE: THE UPPER PERFORATION POINT
WILL NOT START ANY CLOSER THAN
500' FROM DRILL SITE.

THE LOWER PERFORATION POINT IS BACK
90' FROM TOTAL DEPTH.

Land Surveying Incorporated by Raymond A. Scott, a registered land
surveyor in the state of Wyoming, hereby certifies that this plat was made
from data collected during an actual survey performed by Jeremiah Bush on
April 20, 2011 and that the SUNDQUIST FLATS UNIT 19-34-72 1H well site
was staked and is accurately represented on this plat. The bottom hole
location shown on this plat is provided by Chesapeake Operating, Inc. and
all coordinates for that position are calculated, not surveyed.



Prepared For:
CHESAPEAKE OPERATING, INC.

Location:
SUNDQUIST FLATS UNIT 19-34-72 1H
2188' FSL & 2273' FEL
186' NORTH & 345' WEST OF CENTER
NW 1/4 SE 1/4 OF SECTION 19,
T 34 N - R 72 W, 6TH P.M.,
CONVERSE COUNTY, WYOMING

Prepared By:
LAND SURVEYING INCORPORATED
209 NORTH WORKS AVENUE
GILLETTE, WY 82716

DATE: 06/20/2011 JOB #11-084A FILE: 11064AWP.DWG
REVISION: MOVE BHL PER GEOLOGY
CALIBRATION: RICHLAND LOOP REF: DB1