

Wyoming Oil & Gas Conservation Commission
Office of State Oil and Gas Supervisor
P. O. Box 2640
Casper Wyoming 82602

12. County:

CONVERSE

9. API Number:

009-28394 (EXT)

APPLICATION FOR PERMIT TO:

(Submit 1 copy on Fed., 2 on Fee & 3 copies on State Lands)

DRILL ☐ RE-ENTER/ DEEPEN ☐ RENEW OR EXTEND ☒

1. CBM Well ☐ Injection ☐ Monitor ☐ Oil Well ☒ Single Zone ☒ Directional ☐ Gas Well ☐ Strat. Test ☐ Multiple Zone ☐ Horizontal ☒ Disposal ☐ Other: _____ Natural Drift ☐
- These in gray require a separate admin. or Comm. approval.

INFORMATION ON THIS PAGE WILL BE RELEASED TO THE PUBLIC.

2. Operator:

CHESAPEAKE OPERATING INC

3. Address: 6100 N. WESTERN

OKC, OK 73118

Contact Person:

SETH SANDERS

3b. Phone Number:

405-935-2567

Email:

seth.sanders@chk.com

4. Location, (quarter-quarter and footages):

Surface (SHL): NE NW 722 FNL
 1976 FWL

Bottom (BHL): SE SW 660 FSL
 1976 FWL

Latitude (SHL, NAD 83):

42.96641

Longitude (SHL, NAD 83):

105.70496

Latitude (BHL, NAD 83):

42.95568

Longitude (BHL, NAD 83):

105.70483

18. DISTANCE: Is this location less than 350 feet from water supplies, residences, schools, parks, hospitals, churches, businesses or other places where people are known to congregate? No ☒ Yes ☐

19. Proposed depth:

16,604-MD 12,900-TVD

21. Ungraded Elevation:

5341.5

21a. Graded Elevation:

5340.0

22. PROPOSED SURFACE & PRODUCTION CASING & CEMENTING PROGRAM

SIZE OF HOLE	SIZE OF CASING	Lb/ Foot	API Grade	NEW OR USED	CENTRALIZERS	DEPTH (MD)	Sx of CEMENT (API)	CLASS
17-1/2"	13-3/8"	54.5	J-55	NEW	11	SURF-1,700'	1,359	
12-1/4"	9-5/8"	43.5	P-110	NEW	28	SURF-11,411'	1,048	
7-7/8"	5-1/2"	20	P-110	NEW	17	SURF-16,604'	887	

23. DESCRIPTION OF PROPOSED OPERATIONS: If proposal is to directionally drill or deepen, give pertinent data on subsurface location, measured and true vertical depth.

If proposal is to deepen, give data on present productive zone and proposed new productive zone. Give drilling fluids program.

(NOTE ANY PLANNED OPERATIONS PREVIOUSLY SUBMITTED.)

CHESAPEAKE OPERATING INC. PROPOSES TO DRILL A HORIZONTAL WELL TO TEST THE NIOBRARA FORMATION. IF PRODUCTIVE, CASING WILL BE RUN & WELL COMPLETED. IF DRY, WELL WILL BE PLUGGED PER WOGCC REGULATIONS. COMPLETION PLAN WILL BE SENT ON A SUNDAY AT A LATER DATE.

CLOSED LOOP SYSTEM- NO PIT APPLICATION INCLUDED.

AA 5-14-2013

WOGCC DATE STAMP

RECEIVED

APR 19 2013 P

WYOMING OIL & GAS
 CONSERVATION COMMISSION

25. Signed:

Title:

Regulatory Analyst

Date:

4/18/2013

Name Typed:

SETH SANDERS

Phone:

405-935-2567

20. Type of
Bond & No.:

bond OK

Operator: check
boxes for included
attachments.☒Survey
Plat☒

Form 1B

☒

Directional Plan

☒Offset Water
Well Data☒

Form 1A

☒Drilling &
BOP Plans☐Stimulation
Completion Plan☒Offset Well
Data

(The space below is for State Office use)

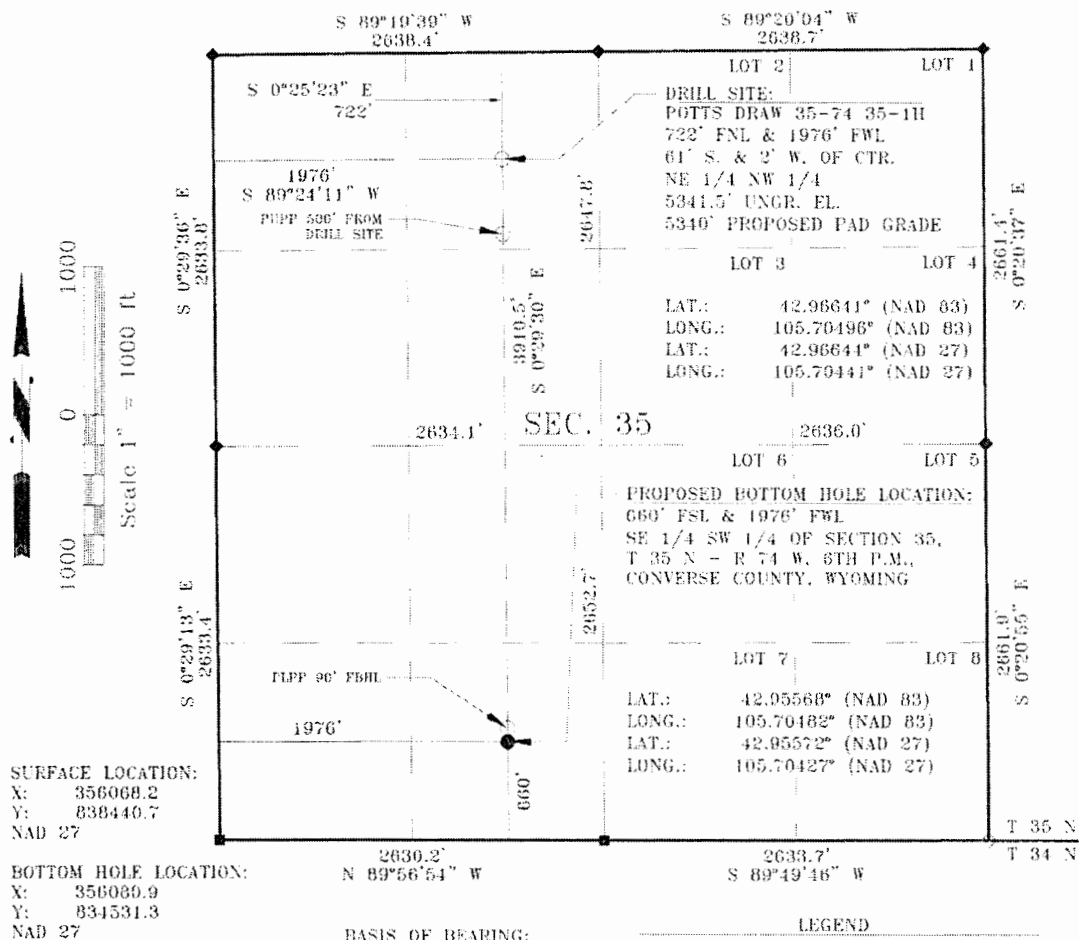
Approved By:

State Oil and Gas Supervisor

Approval Date:

May 17, 2013

T 35 N - R 74 W



SURFACE LOCATION:
X: 356068.2
Y: 838440.7
NAD 27

BOTTOM HOLE LOCATION:
X: 356080.9
Y: 834531.3
NAD 27

PROPOSED BORE PATH
NAD 27 AZ 179.8139°
NAD 27 DISTANCE: 3908.4'
GROUND DISTANCE: 3910.5'

BASIS OF BEARING:
GPS GRID BEARINGS

BASIS OF ELEVATION:
NSRS CORS CORRECTED
LAT., LONG., HEIGHT,
GEOID 99

LEGEND

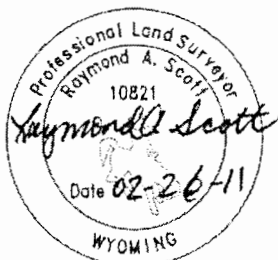
- ◆ = 1988 B.L.M. BRASS CAP
- = 1987 B.L.M. BRASS CAP
- ◇ = 1960 BRASS CAP, LS 520

ALL COURSES MEASURED UNLESS NOTED

NOTE: THE UPPER PERFORATION POINT WILL NOT START ANY CLOSER THAN 500' FROM DRILL SITE.

THE LOWER PERFORATION POINT IS BACK 90' FROM TOTAL DEPTH, AND AT LEAST 660' FROM SECTION LINE.

Land Surveying Incorporated by Raymond A. Scott, a registered land surveyor in the state of Wyoming, hereby certifies that this plat was made from data collected during an actual survey performed by Peter Angilos on February 19, 2011 and that the POTTS DRAW 35-74 35-1H well site was staked and is accurately represented on this plat. The bottom hole location shown on this plat is provided by Chesapeake Operating, Inc. and all coordinates for that position are calculated, not surveyed.



Prepared For:

CHESAPEAKE OPERATING, INC.

Location:

POTTS DRAW 35-74 35-1H
722' FNL & 1976' FWL
61' SOUTH & 2' WEST OF CENTER
NE 1/4 NW 1/4 OF SECTION 35,
T 35 N - R 74 W, 6TH P.M.,
CONVERSE COUNTY, WYOMING

Prepared By:

LAND SURVEYING INCORPORATED
209 NORTH WORKS AVENUE
GILLETTE, WY 82716



DATE: 02/26/2011 JOB #11-009A
CALIBRATION: HIGHLAND LOOP

FILE: 11060WF.BWG
REF. PAS