

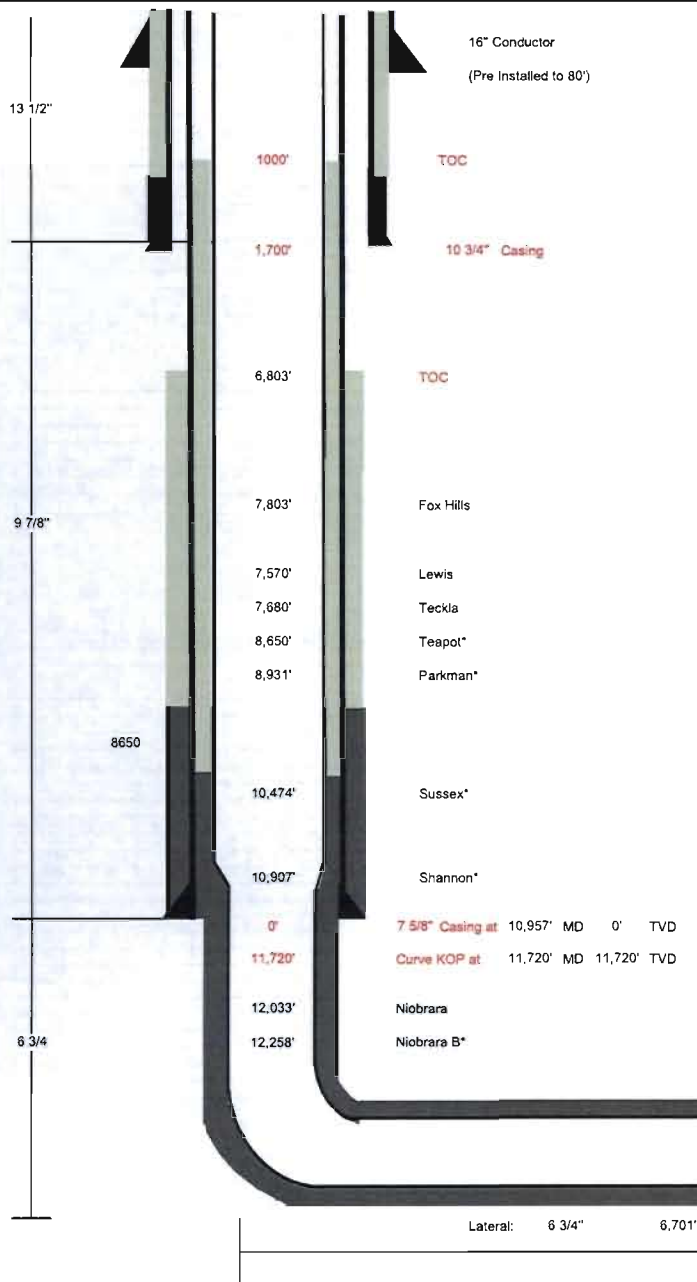




**Drilling Engineer:** Yemi Ajijolaia  
**Superintendent:** Jimmy Anderson / Tony  
**Geologist:** Kevin Hartl  
**Asset Manager:** Robert Elliot

**Well Name:** Gilbert Ditch Unit 34-73 14-1H  
**Formation:** Niobrara Shale  
**County, State:** Converse, WY  
**SH Location:** Section 14-34N-73W, 330' FNL & 330' FWL  
**Section:** 14 Township & Range T34N-R73W  
**BH Location:** Section 23-34N-73W, 1,525' FNL & 1,875' FEL  
**Field:** Powder River

**Drilling Rig:** Trinidad 35  
**KB Elevation:** 5158'  
**Ground Elevation:** 5133'  
**Surface Latitude:** N42.92440 (NAD27)  
**Surface Longitude:** W105.59222 (NAD27)  
**API Number:** 4900928354



Hardlines: Bottom Hole: 6,523' South and 3,054' East of Surface Location.

| Wellhead Equipment |                         |
|--------------------|-------------------------|
| Tubing Spool       | 11" 10M x 7 1/16" 15M   |
| Casing Spool       | 11" 5M x 11" 10M MB     |
| Bradenhead         | 10-3/4" SOW x 11" 5M MB |
| BOP REQUIRED       | 13-5/8" x 10,000 PSI    |

| Tubular Detail            |         |      |       |           |         |         |
|---------------------------|---------|------|-------|-----------|---------|---------|
|                           | Size    | #    | Grade | Conn.     | To      | From    |
| Surface                   | 10 3/4" | 45.5 | J-55  | BTC       | 0'      | 1,700'  |
| Intermediate Hole Section | 7 5/8"  | 29.7 | P-110 | LTC       | 0'      | 10,957' |
| Production                | 5 1/2"  | 20   | P-110 | Hydri 521 | 0'      | 10,757' |
|                           | 4 1/2"  | 13.5 | P-110 | Hydri 521 | 10,757' | 19,184' |

| Log Data Requirements |   |
|-----------------------|---|
| Vendor                | Data & Interval   |
| Selman & Associates   | Mud log fr 7,200' to TD   |
| Learn Directional     | Dir/MWD (no gamma) / surface casing shoe to end of curve  |
| Baker                 | Dir/LWD (Az) Gamma & Resistivity in lateral section   |
| TBD                   | 9 7/8" Hole: Triple-combo and FMI with Dipole Sonic from KOP to surface casing. GR-Neutron to surface. 50 Sidewall Cores. |
| TBD                   | 6 3/4" Lateral Hole: Triple-Combo/FMI/Dipole Sonic from TD to KOP.  |

| Directional Details |         |      |       |         |          |           |          |        |
|---------------------|---------|------|-------|---------|----------|-----------|----------|--------|
|                     | MD      | INC  | AZM   | TVD     | VS       | N/S       | E/W      | DLS    |
| Surface Hole        | 0'      | 0.0  | 0.0   | 0'      | 0'       | 0'        | 0'       | 0.0    |
| 7-5/8" Shoe         | 10,957' | 0.0  | 0.0   | 0'      | 0.00'    | 0.00'     | 0.00'    | 0.00'  |
| Curve KOP           | 11,720' | 0.0  | 0.0   | 11,720' | 0.00'    | 0.00'     | 0.00'    | 0.00'  |
| Landing Pt          | 12,483' | 91.5 | 155.1 | 12,197' | 490.00'  | -444.30'  | 206.60'  | 12.00' |
| TD                  | 19,184' | 91.5 | 155.1 | 12,022' | 7188.90' | -6518.60' | 3031.20' | 0.00'  |

**TARGET** | 2210' TVD @ 0° VS w/ 1.5° downld; window is 10' above and below.

| Mud Program |       |       |        |           |         |         |         |         |  |
|-------------|-------|-------|--------|-----------|---------|---------|---------|---------|--|
| Hole Size   | From  | To    | Type   | Weight    | FV      | PV      | YP      | FL      |  |
| 13 1/2"     | 80    | 1700  | FW/Gel | 8.4 - 8.6 | 28 - 32 | 2 - 8   | 2 - 5   | NC      |  |
| 9 7/8"      | 1700  | 4000  | FW/Gel | 8.4 - 8.7 | 28 - 32 | 2 - 10  | 2 - 8   | NC      |  |
| 9 7/8"      | 4000  | 10957 | LSND   | 8.6 - 8.8 | 36 - 46 | 10 - 16 | 12 - 15 | <10     |  |
| 6 3/4"      | 10957 | 12483 | OBM    | 9.5 - 10  | 45 - 55 | 12 - 16 | 14 - 18 | 10 - 12 |  |
| 6 3/4"      | 12483 | 19184 | OBM    | 10 - 12.5 | 45 - 55 | 12 - 16 | 14 - 18 | 10 - 12 |  |

| 10 3/4" Surface Casing Cement Details |             |          |       |     |       |       |        |
|---------------------------------------|-------------|----------|-------|-----|-------|-------|--------|
|                                       | wt.         | yield    | water | vol | sacks | fill  | excess |
| (ppg)                                 | cu. ft / sk | gal / sk | bbls  | #   | ft    | (%)   |        |
| Lead                                  | 12.5        | 2.24     | 12.6  | 165 | 414   | 12/75 | 100%   |
| Tail                                  | 15.8        | 1.15     | 5.0   | 62  | 303   | 425   | 100%   |

| 7 5/8" Intermediate Casing Cement Details |             |          |       |     |       |       |     |
|---|-------------|----------|-------|-----|-------|-------|-----|
|   | wt.         | yield    | water | vol | sacks | fill  | 0   |
| (ppg)                                     | cu. ft / sk | gal / sk | bbls  | #   | ft    | (%)   |     |
| Lead                                      | 11.4        | 2.54     | 14.8  | 152 | 337   | 2654' | 50% |
| Tail                                      | 15.8        | 1.52     | 6.2   | 90  | 334   | 1500' | 50% |

| 4-1/2" x 5-1/2" Production Casing Cement Details |             |          |       |     |       |       |     |
|--|-------------|----------|-------|-----|-------|-------|-----|
|  | wt.         | yield    | water | vol | sacks | fill  | 0   |
| (ppg)  | cu. ft / sk | gal / sk | bbls  | #   | ft    | (%)   |     |
| Lead   | 11.0        | 2.54     | 15.0  | 232 | 427   | 7957' | 0%  |
| Tail   | 15.2        | 1.72     | 7.4   | 274 | 894   | 9227' | 20% |

MD: 19,184'  
TVD: 12,022'  
DEG: 91.5

4-1/2" x 5-1/2"  
Casing

| Formation Details |          |
|-------------------|----------|
| Formation Tops    | TVD (KB) |
| Fox Hills         | 7,803'   |
| Lewis             | 7,570'   |
| Teckla            | 7,680'   |
| Teapot*           | 8,650'   |
| Parkman*          | 8,931'   |
| Sussex*           | 10,474'  |
| Shannon*          | 10,907'  |
| Niobrara          | 12,033'  |
| Niobrara B*       | 12,258'  |
| B Chalk Top*      | 0,000'   |
| B Chalk Base*     | 0,000'   |
| Carlile           | 12,369'  |

|  |                              |                     |             |   |                                    |
|--|------------------------------|---------------------|-------------|---|------------------------------------|
| Rig: Trinidad 35                         | Drilling Fluids: Halliburton | Cement: Halliburton | Mud Logs: 0 | Directional (9-7/8" & and Curve): Learn Directional | Wellhead: Atherford                |
| SWD (Inc. + Azimuth) Extreme Engineering | Closed Loop System NA        |                     |             | Directional (Lateral Section): Baker                | AFE: 153189<br>Property No: 632507 |



Drilling Engineer: Yemi Ajigbolaja  
Superintendent: Jimmy Anderson / Tony  
Geologist: Kevin Hartl  
Asset Manager: Robert Elliot

Well Name: Gilbert Ditch Unit 34-73 14-1H  
Formation: Niobrara Shale  
County, State: Converse, WY  
SH Location: Section 14-34N-73W, 330' FNL & 330' FWL  
Section: 14 Township & Range T34N-R73W  
BH Location: Section 23-34N-73W, 1,525' FNL & 1,875' FEL  
Field: Powder River

Drilling Rig: Trinidad 35  
KB Elevation: 5158'  
Ground Elevation: 5133'  
Surface Latitude: N42.92440 (NAD27)  
Surface Longitude: W105.59222 (NAD27)  
API Number: 4900928354



Hardlines: Bottom Hole: 6,523' South and 3,054' East of Surface Location.

| Wellhead Equipment |                         |
|--------------------|-------------------------|
| Tubing Spool       | 11" 10M x 7 1/16" 15M   |
| Casing Spool       | 11" 5M x 11" 10M MB     |
| Bradenhead         | 10-3/4" SOW x 11" 5M MB |
| BOP REQUIRED       | 13-5/8" x 10,000 PSI    |

| Tubular Detail            |         |      |       |           |         |         |
|---------------------------|---------|------|-------|-----------|---------|---------|
|                           | Size    | #    | Grade | Conn.     | To      | From    |
| Surface                   | 10 3/4" | 45.5 | J-55  | BTC       | 0'      | 1,700'  |
| Intermediate Hole Section | 7 5/8"  | 29.7 | P-110 | LTC       | 0'      | 10,957' |
| Production                | 5 1/2"  | 20   | P-110 | Hydnl 521 | 0'      | 10,757' |
|                           | 4 1/2"  | 13.5 | P-110 | Hydnl 521 | 10,757' | 19,184' |

| Log Data Requirements |   |
|-----------------------|---|
| Vendor                | Data & Interval   |
| Selman & Associates   | Mud log @ 7,200' to TD  |
| Learn Directional     | Dir/MWD (no gamma) / surface casing shoe to end of curve  |
| Baker                 | Dir/LWD (Azi Gamma & Resistivity in lateral section)  |
| TBD                   | 9 7/8" Hole: Triple-combo and FMI with Dipole Sonic from KOP to surface casing, GR-Neutron to surface, 50 Sidewall Cores. |
| TBD                   | 6 3/4" Lateral Hole: Triple-Combo/FMI/Dipole Sonic from TD to KOP.  |

| Directional Details |         |      |       |         |          |           |          |
|---------------------|---------|------|-------|---------|----------|-----------|----------|
|                     | MD      | INC  | AZM   | TVD     | VS       | N/S       | E/W      |
| Surface Hole        | 0'      | 0.0  | 0.0   | 0'      | 0'       | 0'        | 0.0      |
| 7-5/8" Shoe         | 10,957' | 0.0  | 0.0   | 0'      | 0.00'    | 0.00'     | 0.00'    |
| Curve KOP           | 11,720' | 0.0  | 0.0   | 11,720' | 0.00'    | 0.00'     | 0.00'    |
| Landing Pt          | 12,483' | 91.5 | 155.1 | 12,197' | 490.00'  | -444.30'  | 206.60'  |
| TD                  | 19,184' | 91.5 | 155.1 | 12,022' | 7188.90' | -6518.60' | 3031.20' |

TARGET | 2210' TVD @ 0' VS w/ 1.5' downward; window is 10' above and below.

| Mud Program |       |       |        |           |         |         |         |         |  |
|-------------|-------|-------|--------|-----------|---------|---------|---------|---------|--|
| Hole Size   | From  | To    | Type   | Weight    | FV      | PV      | YP      | FL      |  |
| 13 1/2"     | 80    | 1700  | FW/Gel | 8.4 - 8.6 | 28 - 32 | 2 - 8   | 2 - 5   | NC      |  |
| 9 7/8"      | 1700  | 4000  | FW/Gel | 8.4 - 8.7 | 28 - 32 | 2 - 10  | 2 - 8   | NC      |  |
| 9 7/8"      | 4000  | 10957 | LSND   | 8.6 - 8.8 | 38 - 46 | 10 - 16 | 12 - 15 | <10     |  |
| 6 3/4"      | 10957 | 12483 | OBM    | 9.5 - 10  | 45 - 55 | 12 - 16 | 14 - 18 | 10 - 12 |  |
| 6 3/4"      | 12483 | 19184 | OBM    | 10 - 12.5 | 45 - 55 | 12 - 16 | 14 - 18 | 10 - 12 |  |

| 10 3/4" Surface Casing Cement Details |       |             |          |      |       |      |        |
|---------------------------------------|-------|-------------|----------|------|-------|------|--------|
|                                       | wt.   | yield       | water    | vol  | sacks | fill | excess |
|                                       | (ppg) | cu. ft / sk | gal / sk | bbls | #     | ft   | (%)    |
| Lead                                  | 12.5  | 2.24        | 12.6     | 165  | 414   | 1275 | 100%   |
| Tail                                  | 15.8  | 1.15        | 5.0      | 62   | 303   | 425  | 100%   |

| 7 5/8" Intermediate Casing Cement Details |       |             |          |      |       |      |     |
|---|-------|-------------|----------|------|-------|------|-----|
|   | wt.   | yield       | water    | vol  | sacks | fill | 0   |
|   | (ppg) | cu. ft / sk | gal / sk | bbls | #     | ft   | (%) |
| Lead                                      | 11.4  | 2.54        | 14.8     | 152  | 337   | 2654 | 50% |
| Tail                                      | 15.8  | 1.52        | 6.2      | 90   | 334   | 1500 | 50% |

| 4-1/2" x 5-1/2" Production Casing Cement Details |       |             |          |      |       |      |     |
|--|-------|-------------|----------|------|-------|------|-----|
|  | wt.   | yield       | water    | vol  | sacks | fill | 0   |
|  | (ppg) | cu. ft / sk | gal / sk | bbls | #     | ft   | (%) |
| Lead   | 11.0  | 2.54        | 15.0     | 232  | 427   | 7957 | 0%  |
| Tail   | 15.2  | 1.72        | 7.4      | 274  | 894   | 9227 | 20% |

MD: 19,184'  
TVD: 12,022'  
DEG: 91.5

4-1/2" x 5-1/2"  
Casing

| Formation Details |          |
|-------------------|----------|
| Formation Tops    | TVD (KB) |
| Fox Hills         | 7,803'   |
| Lewis             | 7,570'   |
| Teckla            | 7,680'   |
| Teapot            | 8,650'   |
| Parkman           | 8,931'   |
| Sussex            | 10,474'  |
| Shannon           | 10,907'  |
| Niobrara          | 12,033'  |
| Niobrara B        | 12,258'  |
| B Chalk Top       | 0,000'   |
| B Chalk Base      | 0,000'   |
| Cartle            | 12,369'  |

|  |                              |                     |             |   |                                    |
|--|------------------------------|---------------------|-------------|---|------------------------------------|
| Rig: Trinidad 35                         | Drilling Fluids: Halliburton | Cement: Halliburton | Mud Logs: 0 | Directional (9-7/8" & Curve): Learn Directional | Wellhead: etherford                |
| SWD (Inc. + Azimuth) Extreme Engineering | Closed Loop System NA        |                     |             | Directional (Lateral Section): Baker            | AFE: 153189<br>Property No: 632507 |