

**APPENDIX I EVALUATION OF HIGH ENERGY LINE
BREAKS OUTSIDE CONTAINMENT**

TABLE OF CONTENTS

| <u>Section</u> | | <u>Page</u> |
|----------------|---|-------------|
| I.1 | Evaluation Criteria..... | 1 |
| I.1.1 | Definition of Terms | 3 |
| I.1.2 | Assumptions..... | 5 |
| Table I.1-1 | Volume Descriptions for HELBs in the Reactor Building | 7 |
| Table I.1-2 | Volume Descriptions for HELBs in the Turbine Building..... | 8 |
| I.2 | High Energy Systems and Piping | 1 |
| I.2.1 | High Energy Line and System Descriptions | 1 |
| I.2.1.1 | Main Steam System | 2 |
| I.2.1.2 | Feedwater System..... | 3 |
| I.2.1.3 | Condensate System | 3 |
| I.2.1.4 | HPCI (Steam) System | 3 |
| I.2.1.5 | RCIC (Steam) System | 4 |
| I.2.1.6 | Reactor Water Cleanup (RWCU) System..... | 4 |
| I.2.1.7 | Instrument and Sample Lines | 4 |
| I.2.1.8 | Core Spray System | 5 |
| I.2.1.9 | Residual Heat Removal (RHR) System..... | 5 |
| I.2.1.10 | HPCI (Water) System | 6 |
| I.2.1.11 | RCIC (Water) System..... | 6 |
| I.2.1.12 | Standby Liquid Control | 6 |
| I.2.1.13 | Off-gas System..... | 6 |
| I.2.1.14 | Control Rod Drive System | 7 |
| I.2.1.15 | Zinc Oxide Injection System (GEZIP)..... | 7 |
| I.2.2 | High Energy Line Designation List | 7 |
| Table I.2-1 | High Energy Piping List | 9 |
| I.3 | Break Analysis..... | 1 |
| I.3.1 | Selection of Break Locations | 1 |
| I.3.1.1 | Class I | 1 |
| I.3.1.2 | Class II | 2 |
| I.3.1.3 | Breaks in Moderate-Energy and/or Non-High Energy Lines..... | 2 |
| I.3.2 | Break Types | 2 |
| I.3.3 | HELB Interactions..... | 3 |
| I.3.3.1 | Pipe Whip Effects | 3 |

| <u>Section</u> | | <u>Page</u> |
|----------------|---|-------------|
| I.3.3.2 | Jet Impingement Effects | 4 |
| I.3.3.3 | Flooding Effects..... | 5 |
| I.3.3.4 | Environmental Effects and Compartment Pressurization | 5 |
| I.3.4 | System Break Locations..... | 6 |
| I.4 | Safe Shutdown Requirements..... | 1 |
| I.4.1 | Safe Shutdown Systems | 1 |
| I.4.1.1 | Shutdown Instrumentation..... | 2 |
| I.4.2 | Description of Safe Shutdown Paths | 2 |
| I.4.3 | Safe Shutdown System Component Locations | 4 |
| I.4.3.1 | Reactor Protection System..... | 4 |
| I.4.3.2 | Control Rod Drive System | 4 |
| I.4.3.3 | High Pressure Coolant Injection (HPCI) System | 4 |
| I.4.3.4 | Reactor Pressure Relief System | 5 |
| I.4.3.5 | Residual Heat Removal (RHR) System..... | 5 |
| I.4.3.6 | Core Spray (CS) System | 6 |
| I.4.3.7 | RHR Service Water System | 7 |
| I.4.3.8 | Reactor Core Isolation Cooling (RCIC) System..... | 7 |
| I.4.3.9 | Shutdown Instrumentation..... | 8 |
| I.4.3.10 | Emergency Service Water Systems | 9 |
| I.4.3.10.1 | Emergency Diesel Generator Emergency Service Water System. | 9 |
| I.4.3.10.2 | Emergency Filtration Train Emergency Service Water System | 10 |
| I.4.3.11 | Emergency Diesel Generators and Auxiliaries | 11 |
| I.4.3.12 | Auxiliary Power Distribution Systems | 11 |
| I.4.3.13 | DC Power Systems | 11 |
| I.4.3.14 | HVAC Systems..... | 12 |
| Table I.4-1 | Safe Shutdown Components Available | 13 |
| I.5 | HELB and Safe Shutdown Evaluation | 1 |
| I.5.1 | Compliance Evaluation (Reference 58)..... | 1 |
| I.5.1.1 | Identification of Potential Targets | 3 |
| I.5.1.2 | Single Active Failure Evaluation | 3 |
| I.5.2 | HELB Evaluations by System..... | 6 |
| I.5.2.1 | Main Steam System | 6 |
| I.5.2.1.1 | Main Steam Chase (Volume 16) | 6 |
| I.5.2.1.2 | SJAE Room (Volume 14) | 7 |
| I.5.2.1.3 | Condenser Area (Volume 15)..... | 8 |

| <u>Section</u> | | <u>Page</u> |
|----------------|---|-------------|
| I.5.2.1.4 | Turbine Operating Floor (Volume 37) | 9 |
| I.5.2.2 | Feedwater System..... | 9 |
| I.5.2.2.1 | Reactor Feedwater Pump Area Volumes 2 and 3 | 9 |
| I.5.2.2.2 | Turbine Building Pipe Chase (Volume 21)..... | 10 |
| I.5.2.2.3 | Turbine Operating Floor (Volume 37) | 10 |
| I.5.2.2.4 | Main Steam Chase (Volume 16) | 10 |
| I.5.2.2.5 | Condenser Area (Volume 15)..... | 11 |
| I.5.2.3 | Condensate System | 12 |
| I.5.2.3.1 | Condenser Area (Volume 15)..... | 12 |
| I.5.2.3.2 | Turbine Building Pipe Chase (Volume 21)..... | 12 |
| I.5.2.3.3 | Reactor Feedwater Pump Area (Volumes 2 and 3)..... | 12 |
| I.5.2.4 | High Pressure Coolant Injection (Steam) System | 12 |
| I.5.2.4.1 | Main Steam Chase (Volume 16) | 13 |
| I.5.2.4.2 | Torus Area (Volumes 9 and 12) | 13 |
| I.5.2.4.3 | HPCI Room (Volume 8)..... | 13 |
| I.5.2.5 | RCIC (Steam) System | 14 |
| I.5.2.5.1 | Main Steam Chase (Volume 16) | 14 |
| I.5.2.5.2 | Torus Area (Volume 9) | 14 |
| I.5.2.5.3 | RCIC Compartment (Volume 5) | 14 |
| I.5.2.6 | Reactor Water Clean Up (RWCU) System | 15 |
| I.5.2.6.1 | RWCU Area (Volume 28-32)..... | 15 |
| I.5.2.6.2 | MG Set Room (Volume 26) | 16 |
| I.5.2.6.3 | Reactor Building 962-Foot Elevation, Northwest Area (Volume 27) | 16 |
| I.5.2.6.4 | Reactor Building Open Area, 935 Foot Elevation, West Side (Volume 18)..... | 16 |
| I.5.2.6.5 | Main Steam Chase (Volume 16) | 16 |
| I.5.2.7 | Core Spray System | 16 |
| I.5.2.8 | Residual Heat Removal System..... | 16 |
| I.5.2.9 | HPCI (Water) System | 16 |
| I.5.2.10 | RCIC (Water) System..... | 17 |
| I.5.2.11 | Standby Liquid Control | 17 |
| I.5.2.12 | Off-Gas System | 17 |
| I.5.2.13 | Zinc Oxide Injection System (GEZIP)..... | 17 |
| I.5.3 | Table of System Effects..... | 18 |

| <u>Section</u> | | <u>Page</u> |
|------------------|---|-------------|
| Table I.5-1 | Location of High Energy Systems and Safe Shutdown Equipment by Volume | 19 |
| Table I.5-2 | Table of System Effects..... | 21 |
| I.6 | References | 1 |
| I.FIGURES | | 1 |
| I.1-1 | Reactor Bldg El. 896' - 0" | 2 |
| I.1-2 | Reactor Bldg (Approx 923') Top of Torus - Upper Levels of RHR Rooms, HPCI, RCIC..... | 3 |
| I.1-3 | Reactor Bldg - El. 935' - 0" | 4 |
| I.1-4 | Reactor Bldg - El. 962' - 0" | 5 |
| I.1-5 | Reactor Bldg - 985' (DW-983, Vessel-989)..... | 6 |
| I.1-6 | Reactor Bldg - 1001' | 7 |
| I.1-7 | Reactor Bldg - 1027' | 8 |
| I.1-8 | Turbine Bldg. El. 911' - 0" | 9 |
| I.1-9 | Turbine Bldg. El. 931' - 0" | 10 |
| I.1-10 | Turbine Bldg. El. 951' - 0" | 11 |

**APPENDIX I EVALUATION OF HIGH ENERGY LINE
BREAKS OUTSIDE CONTAINMENT****I.1 Evaluation Criteria**

The criteria used for the determination of the high energy lines and the effects of the postulated breaks on these lines on safe shutdown equipment are the December 18, 1972 Giambusso letter (Reference 2) as clarified by Standard Review Plan (SRP) 3.6.1 (Reference 3), SRP 3.6.2 (Reference 4), and Generic Letter 87-11 (Reference 21). These criteria are utilized as the basis for the determination of the high energy lines, break locations, and the evaluation of effects on Safe Shutdown (SSD) equipment.

The HELB issue was initiated by the Giambusso letter (Reference 2) with its enclosure *“General Information Required for Consideration of the Effects of a Piping System Break Outside Containment.”* The letter is a “request” of Northern States Power (NSP) to provide *“analyses and other relevant information needed to determine the consequences of such an event, using the guidance provided in the enclosed general information request. ... You should determine the applicability, for the Monticello facility, of the items listed in the enclosure.”*

The Reference 2 enclosure’s introductory paragraph states, *“applicants and licensees should determine on an individual basis the applicability of each of the following items for inclusion in their submittals.”*

1. *The systems (or portions of systems) for which protection against pipe whip is required should be identified. Protection from pipe whip need not be provided if any of the following conditions will exist:*

(a) *Both of the following piping system conditions are met:*

- (1) *the service temperature is less than 200°F; and*
- (2) *the design pressure is 275 psig or less.”*

The formal NSP response (Reference 8) to the Giambusso letter, submitted the Monticello HELB analysis report (dated August 1973), *Postulated Pipe Failures Outside Containment*, as part of the Monticello licensing basis. The Monticello August 1973 HELB report takes exception to the Giambusso letter’s HELB selection criteria, as Section 3.0 specifically states:

“The analysis has been conducted using the following general procedures:

- 3.1 *The high energy piping systems were identified using the criteria that the service temperature is greater than 200°F and the design pressure is greater than 275 psig.”*

After the AEC reviews were completed, the AEC transmitted their formal approval with related Safety Evaluation (SE) of the Monticello HELB analysis in Reference 6. Reference 6 specifically addresses the AEC acceptance of NSP’s letter dated September 7, 1973 and its *“submitted report on Postulated Pipe Failures Outside Containment dated August, 1973”*. The AEC SE states, *“Protection ... should be provided ... from ruptures in pipes carrying high energy fluid, where the temperature and pressure conditions of the fluid exceed 200°F and 275 psig,*

respectively.” The approved original licensing basis for Monticello’s HELB selection criteria allows for an exception to the guidance in the Giambusso letter.

The Giambusso letter was written to have NSP address 10 CFR 50 Appendix A General Design Criterion 4 - *Environmental and dynamic effects design bases* with respect to HELB outside containment. Monticello was designed and built before the General Design Criteria (GDC) were issued. Therefore, Monticello was not designed as a GDC compliant plant. NRC NRR Office Instruction LIC-100, *Control of Licensing Bases for Operating Reactors* (Reference 9), provides guidance on how to interpret the licensing bases of older plants like Monticello with respect to meeting the GDC. LIC-100 Subsection 2.1.5.7, Appendix A, “General Design Criteria” states

“The General Design Criteria are not applicable to plants with construction permits issued prior to May 21, 1971. At the time of the promulgation of Appendix A, the Commission stressed that the GDC were not new requirements and were promulgated to more clearly articulate the licensing requirements and practice in effect at that time. While compliance with the intent of the GDC is important, each plant licensed before the GDC were formally adopted was evaluated on a plant specific bases, determined to be safe, and licensed by the Commission. Furthermore, current regulatory processes are sufficient to ensure that plants continue to be safe and comply with the intent of the GDC.”

The NRC SE acceptance letter (Reference 6) statement, *“Based on our review of the information you have submitted on the Monticello Nuclear Generating Plant, we have determined that after completion of the proposed modifications, the plant would withstand the consequences of postulated ruptures in high energy fluid piping outside the containment without loss of the capability to initiate and maintain the plant in a safe shutdown condition”*, demonstrates that Monticello complied with the intent of GDC 4.

The current licensing basis (CLB) requirement is for Monticello to comply with the intent of GDC 4 as described in the 1973 HELB analysis, except where superseded by the 1986 HELB analysis, discussed below (Reference 11).

Reference 10 reported the discovery of an applicable area of the turbine building that may have not been included in the 1973 HELB analysis. As part of resolution of that discovered condition, NSP thoroughly reviewed the original 1973 analysis. The results of that analysis are documented in the Reference 11 NUTECH Engineering report, and that report was submitted to the NRC in the Reference 25.

Section 3 of the NUTECH report defines the evaluation approach and how the Standard Review Plan (SRP) and ANSI/ANS-58.2 were used to clarify analytical assumptions. These helped to better define the assumptions for operating conditions, availability of off-site power, consideration of simultaneous events, single active failure, break locations, pipe whip effects, jet impingement effects and flooding effects.

Request for Additional Information (RAI) 1 from Reference 59 refers to the HELB selection criteria in Section 3.3 of the NUTECH report, and states, *“The selection criteria are less conservative than the Giambusso criteria (service water temperature exceeds 200°F or design pressure exceeds 275 psig) as well as the SRP 3.6.2 criteria (maximum operating temperature exceeds 200°F and maximum operating pressure exceeds 275 psig). Justify the deviation and provide a list of the piping systems that would be*

included in the Monticello HELB analysis if the Giambusso criteria were used and a list if the SRP 3.6.2 criteria were used.”

Reference 60 submitted the final NSP response to the HELB selection criteria issue in RAI 1. The response states:

‘With one exception the criteria used for the selection of high energy lines was “operating temperature greater than 200°F and design pressure greater than 275 psig”. This criteria is consistent with the criteria used in the original 1973 Monticello High Energy Line Break analysis. Section I.2-3 of Appendix I will be revised to reflect this selection criteria as part of the next annual update to the Monticello USAR.’

USAR Appendix I has been updated to specifically include the HELB selection criteria (consistent with the criteria used in 1973 and 1986 analyses).

Although the NRC did not issue a formal SE, the NRC (in Reference 61) does acknowledge *“Additional information was provided June 18, 1986, December 4, 1986, September 25, 1987, December 14, 1987 (Reference 60 herein) January 25, 1988, and February 17, 1989.” Reference 61 concludes that the “original non-conforming HELB conditions have been corrected”.*

Further review of the HELB criteria occurred with an extended power uprate (EPU) RAI response (Reference 62) with NRC review documented in Reference 63.

I.1.1 Definition of Terms

Circumferential Break - A pipe break perpendicular to the pipe axis with a break area equivalent to the internal cross-sectional area of the ruptured pipe.

Compartment - The collective term used to describe rooms, bays, hallways, etc., that makeup an enclosure in which a high energy pipe is routed or pipe break may take place.

Compartmental Pressurization - The condition of pressurization of a compartment above its normal pressure due to a high energy line break within the compartment.

Critical Crack - The single postulated crack on a high energy line that produces the most adverse effect on safe shutdown equipment within a compartment. Dimensionally the critical crack size is postulated to be one-half the pipe inside diameter in length by one-half the pipe thickness in width.

Equipment Qualification - The term used to describe the ability of equipment to remain functional in the abnormal temperature, pressure, humidity, and radiation environments generated by a postulated HELB within a compartment.

Flooding - The condition encountered within a compartment or adjoining compartments when liquid water or condensing steam escapes from a ruptured high energy line or other component at a faster rate than the fluid can be drained away.

High Energy Fluid - A fluid with a design pressure greater than or equal to 275 psig and a normal operating temperature greater than or equal to 200°F.

High Energy System - Any mechanical system with piping containing high energy fluid.

High Energy Line - Any pipe which carries fluid with a normal operating pressure greater than or equal to 275 psig and a normal operating temperature greater than or equal to 200°F. (Reference 6 and 64)

Jet Impingement - The forces exerted on targets by high pressure fluid exiting a break in the pipe.

Longitudinal Break - A pipe break parallel to the pipe axis and oriented at any point around the pipe circumference with a break area equal to the effective cross-sectional flow area immediately upstream of the break location.

Normal Operating Conditions - Plant operating conditions during reactor startup, operation at power, hot standby, or reactor cooldown to the cold shutdown condition.

Pipe Whip - The mechanical reaction caused by high energy fluid exiting a ruptured pipe.

Safe Shutdown - Shutdown of the unit from power to subcritical condition with temperature in the reactor of less than or equal to 212°F, no resulting fuel damage, and no structural failure of primary or secondary containment.

Safe Shutdown System/Component - Systems and components required to safely shutdown the reactor and mitigate the consequences of a high energy line break without off-site power.

Single Active Failure - The malfunction or loss of function of an electrical or fluid system component, excluding passive failures, which rely on mechanical movement to complete its intended function upon demand.

Terminal End - Extremities of piping runs that connect to structures, components (e.g., vessels, pumps, valves), or pipe anchors that act as rigid constraints to piping motion and thermal expansion. A branch connection to a main piping run is a terminal end of the branch run, except where the branch run is classified as part of a main run in the stress analysis and is shown to have a significant effect on the main run behavior. In piping runs which are maintained pressurized during normal plant conditions for only a portion of the run (i.e., up to the first normally closed valve) a terminal end of such runs is the piping connection to this closed valve. (MEB 3-1, Footnote 3 – Reference 21) A normally closed valve is not considered a terminal end if the valve is part of the pipe stress analysis (which includes seismic) and the valve is not supported as an anchor. (Reference 64)

Volumes - The subdivision of the plant's buildings chosen to provide consistent identification of the compartments evaluated in this report. A similar but separate set of volume numbers is used for the Reactor Building and Turbine Building. See Figures I.1-1 through I.1-10.

I.1.2 Assumptions

The following assumptions were used during the HELB evaluation in accordance with the evaluation criteria above:

- I.1.2.1 A postulated break is assumed to occur during Normal Operating Conditions.
- I.1.2.2 Loss of off-site power concurrent with the line break or as a direct consequence of the piping failure was assumed, unless it was more conservative to assume the availability of offsite power, as was the case for a break in a Feedwater line.
- I.1.2.3 No fires or other simultaneous line breaks or accidents were considered.
- I.1.2.4 A single active component failure was assumed in systems used to mitigate the consequences of the postulated piping failure and to shut down the reactor. The single active component failure was assumed to occur in addition to the postulated piping failure and the loss of off-site power as discussed in Section I.1.2.2.
- I.1.2.5 Circumferential breaks were assumed to result in complete pipe severance with full separation of the two severed pipe ends (i.e., guillotine). The break was assumed to be perpendicular to the longitudinal axis of the pipe. Circumferential breaks postulated at fittings were assumed to be at the fitting-to-pipe weld(s).
- I.1.2.6 Longitudinal breaks were assumed to be oriented parallel to the longitudinal axis of the pipe oriented at any point around the pipe circumference with a break area equal to the effective cross-sectional flow area immediately upstream of the break location. Longitudinal breaks postulated at fittings were assumed to be at the center of the fitting.
- I.1.2.7 Class I Systems, for which stress data was not available to determine break locations, were treated as Class II Systems.
- I.1.2.8 A normally closed check valve in a piping line utilized as an inboard containment isolation valve was assumed to leak. The leakage was assumed to result in pressurization of that section of pipe out to the first normally closed valve outside the Primary Containment.
- I.1.2.9 A normally closed check valve was assumed to remain closed in the event of a postulated line break between the check valve and the first normally closed valve outside the primary containment. For this condition, the check valve was assumed to be a passive component.
- I.1.2.10 The safety related electrical power distribution systems are electrically coordinated, and faults on the system will not propagate beyond the first non-HELB affected isolation device (Reference 5).

- I.1.2.11 Breaks do not need to be postulated in sections of piping from containment up to the outboard isolation valve provided that the requirements of Branch Technical Position MEB 3-1 as identified in Standard Review Plan, NUREG-0800, 3.6.2 have been met.
- I.1.2.12 Break locations were postulated for all high energy piping with a nominal diameter greater than 1 inch, and a normal operation time exceeding 2% for the total unit operation time (Reference 25).

Table I.1-1 Volume Descriptions for HELBs in the Reactor Building

| <u>VOLUME</u> | <u>VOLUME DESCRIPTION</u> |
|---------------|---|
| 1 | RHR and Core Spray Pump Room, Division I |
| 2 | RHR and Core Spray Pump Room, Division I Stairway |
| 3 | RHR and Core Spray Pump Room, Division II |
| 4 | RHR and Core Spray Pump Room, Division II Stairway |
| 5 | RCIC Room |
| 6 | Reactor Bldg Elevation 896' Equipment and Floor Drain Tank |
| 7 | CRD Pump Room |
| 8 | HPCI Room |
| 9 | Suppression Pool Area - Northeast |
| 10 | Suppression Pool Area - Southeast |
| 11 | Suppression Pool Area - Southwest |
| 12 | Suppression Pool Area - Northwest |
| 13 | East Shutdown Cooling Room |
| 14 | CRD Hydraulic Control Unit Area - East 935' Elevation |
| 15 | TIP Room |
| 16 | Steam Chase |
| 17 | TIP Drive Room |
| 18 | CRD Hydraulic Control Unit Area and HVAC Areas - NW 935' EI |
| 19 | CRD Hydraulic Control Unit Area and HVAC Areas - SW 935' EI |
| 20 | West Shutdown Cooling Room |
| 21 | PIPE Chase 974' |
| 22 | MCC and Standby Liquid Control System Area - East 962' EI |
| 23 | Contaminated Tool Storage - East 962' EI |
| 24 | Recirc M/G Set Airlock |
| 25 | 962' North of Reactor Shield Wall |
| 26 | Reactor Recirculation Pumps MG Set Room |
| 27 | Cooling Water Pump and Chiller Area - West 962' EI |
| 28 | RWCU Pump Room B and Hallway |
| 29 | RWCU Pump Room A |
| 30 | RWCU Heat Exchanger Area |
| 31 | RWCU Area Behind Hx Exchanger |
| 32 | RWCU Isolation Valve Room |
| 33 | MCC and Instrument Rack C-55 Area |
| 34 | CGCS-A Recombiner Area |
| 35 | Cooling Water Heat Exchanger and CGCS-B Recombiner Area |
| 36 | Standby Gas Treatment System B - Train Room |
| 37 | Standby Gas Treatment System Fan Room |
| 38 | Standby Gas Treatment System Airlock |
| 39 | Standby Gas Treatment System A - Train Area |
| 40 | Reactor Plenum Room |
| 41 | Reactor Recirculation MG Set Fan Room |
| 42 | Corridor Outside Main Exhaust Plenum |
| 43 | Skimmer Surge Tank and Fuel Pool Pumps Area |
| 44 | Snubber Rebuild and Decontamination Area |
| 45 | Northeast Stairway 1001' EI |
| 46 | Contaminated Equipment Storage Area |
| 47 | Northwest Stairway 1001' EI |
| 48 | Refueling Floor 1028' EI |

Table I.1-2 Volume Descriptions for HELBs in the Turbine Building

| <u>VOLUME</u> | <u>VOLUME DESCRIPTION</u> |
|---------------|--|
| 1 | Motor Control Center B-33A & B, and B-12 |
| 2 | Turbine Building southeast Corner near MCC B-33 |
| 3 | Lube Oil Reservoir and Reactor Feed Pump Area |
| 4 | Lube Oil Storage Tank Room |
| 5 | Turbine Building Corridor Northeast 911' El. |
| 6 | Water Box Scavaging System Area |
| 7 | Turbine Building Sump and MCC B-31 Area |
| 8 | 4KV and Load Center Division A |
| 9 | Hallway outside Air Ejector Room Entrance Door 15 |
| 10 | Hydrogen Seal Oil Unit and Condensate Pump Area North |
| 11 | Hydrogen Seal Oil Unit and Condensate Pump Area South |
| 12 | Mechanical Vacuum Pump Area |
| 13 | Condensate Backwash - Receiving Tank Area |
| 14 | Air Ejector Room |
| 15 | Turbine Basement Condenser Area |
| 16 | Pipe Tunnel to Intake |
| 17 | Intake Entry Area |
| 18 | Intake Structure Pump Room |
| 19 | Circ Water Pump Area |
| 20 | Turbine Building 931' El. East |
| 22 | Turbine Building 931' El Vent Chase |
| 27 | Turbine Building Corridor Northwest and Hallway to No. 11 D.G. Entry 931' El |
| 36 | Turbine Building Northwest Stairway from 941' to 951' El |
| 33 | Valve Operating Gallery and Condensate Demin Panels Area |
| 21 | FW Pipe and Cable Tray Penetration Room |
| 23 | Auxiliary Boiler Room |
| 24 | East Electrical Equipment Room and 13 EDG |
| 25 | 13.8kV Switchgear Rooms |
| 26 | Turbine Building Corridor Southeast Corner 931' El |
| 35 | Cable Chase 941' El |
| 29 | No. 11 Diesel Generator Room |
| 28 | No. 11 Diesel Generator Room Entry Area |
| 30 | No. 12 Diesel Generator Room |
| 32 | Stator Water Cooling Area |
| 31 | 4KV and Load Center Division B |
| 39 | Reactor Building Plenum Room |
| 34 | Turbine Building Railroad Car Shelter |
| 38 | Reactor Building Steam Chase |
| 37 | Turbine Deck 951' to 1004' El |

**APPENDIX I *EVALUATION OF HIGH ENERGY LINE
BREAKS OUTSIDE CONTAINMENT*****I.2 High Energy Systems and Piping**

High energy piping was assumed to be all piping with a normal operating temperature equal to or exceeding 200°F and a design pressure equal to or exceeding 275 psig (Reference 6 and 8). If the actual operating temperature was not known, the design temperature was conservatively substituted. All systems having piping containing high energy fluids are classified as high energy systems, and those portions of the piping containing the high energy fluid are identified as high energy lines.

- a. Main Steam
- b. Feedwater
- c. Condensate
- d. HPCI (steam)
- e. RCIC (steam)
- f. RWCU (Reactor Water Clean-up)
- g. Instrument and sample lines (identified with associated systems in Table I.2-1)
- h. Core Spray
- i. Residual Heat Removal
- j. HPCI (injection)
- k. RCIC (injection)
- l. Standby Liquid Control
- m. Off-gas
- n. Control Rod Drive
- o. GEZIP (Zinc Oxide Injection)

I.2.1 High Energy Line and System Descriptions

The primary high energy lines are described by system in the following paragraphs. These descriptions identify the piping containing the high energy fluids, the compartments containing the high energy lines, the boundaries of the high energy portions of the piping, and the justifications for excluding any of the piping from further HELB consideration.

For convenience, the identification of specific plant areas, compartments, and rooms, was accomplished by subdividing the major buildings of the plant into discrete volumes for use in the HELB analysis. A list of volumes is provided in Tables I.1-1 and I.1-2.

I.2.1.1 Main Steam System

The high energy lines for the Main Steam System are located in 4 compartments; the main steam chase (Volume 16) in the Reactor Building, the condenser area (Volume 15), the steam jet air ejector (SJAE) room (Volume 14) and the turbine operation floor (Volume 37) in the Turbine Building.

The high energy lines on the Main Steam System include the four main steam lines, the equalization lines, the turbine bypass lines to the condenser, Main Steam to SJAE line, main steam to steam seal system, and the main steam drain lines.

The main steam line boundary points are containment penetrations X-7A, X-7B, X-7C and X-7D and the four nozzles to the high pressure turbine. Piping between the containment penetrations and the main steam outboard isolation valves has been evaluated per the criteria defined in I.3.1.1(3)(b). There are also terminal points at the inlet and outlet to the turbine stop and control valves for the four main steam lines. The equalization lines are considered branch lines from the four main steam lines. Therefore, their boundaries are at the tees to the main steam lines. The turbine bypass line boundaries are at the tees into the main steam lines, the penetrations at the condenser, and terminal points at the bypass control valves. The main steam to the SJAE's line has boundaries at the tees to the main steam lines and at the SJAE pressure reducing station in the SJAE room. The steam seal regulator lines have boundaries on the steam bypass line and steam seal regulator. The main steam drain lines have boundaries at the outboard Primary Containment isolation valve, MO-2374, and at the 6-inch reducer just downstream of valve MO-2565.

I.2.1.2 Feedwater System

The high energy Feedwater System piping (FW2A-14"-ED and FW2B-14"-ED) begin in the feedwater pump area (Volume 3) at the discharge nozzles of feed pumps P-2A and P-2B. The two main feedwater lines, FW2A-14" and FW2B-14", pass through southeast corner of the Turbine Building (Volume 2), up into the Turbine Building pipe chase area (Volume 21) and then into the condenser area (Volume 15). Before entering the Reactor Building steam chase (Volume 16) and terminating at containment penetrations X-9A and X-9B, each feedwater line is connected to the respective high pressure feedwater heaters (E-14A & B and E-15A & B) on the turbine operating floor (Volume 37). Piping between the containment penetrations and the primary containment isolation valves FW-94-1 and FW-94-2 has been evaluated per the criteria defined in I.3.1.1(3)(b). The feedwater regulating station piping, FW2-6"-DE and FW2-14"-DE, is terminated at both of the main feedwater piping lines and is located in Volumes 2 and 3. The feedwater pumps recirculation lines to the condenser, FW3-8"-DE and FW4-8"-DE, are routed from the discharge of each feedwater pump to the condenser inlet nozzles. Their high energy boundaries are the feedwater lines and the condenser. These lines are routed from Volume 3 through the wall into the condenser area (Volume 15) to the condenser. The other feedwater piping, FW10-8"-DE and FW11-14"-ED are located in the condenser area (Volume 15). Their boundaries are the main feedwater lines and valve FW-88-3.

I.2.1.3 Condensate System

The high energy Condensate System lines are located in the condenser area (Volume 15), Turbine Building pipe chase area (Volume 21) and reactor feedwater pump area (Volumes 2 and 3). The high energy Condensate System piping includes the main condensate system piping (C4A-16"-GB and C4B-16"-GB) and the condensate cross-tie (C7-16"-GB). The boundaries of the condensate lines are the outlet nozzles of the second stage intermediate heaters E-12A & E-12B and the suction nozzles of the feedwater pumps P-2A and P-2B.

I.2.1.4 HPCI (Steam) System

The high energy piping on the HPCI system is the steam supply line (PS18-8"-ED). The HPCI steam supply line is routed from containment penetration X-11 to the HPCI steam supply valve, MO-2036, located near the HPCI turbine. Piping between containment penetration X-11 and the outboard primary containment isolation valve MO-2035 has been evaluated per the criteria defined in I.3.1.1(3)(b). The remaining portions of this line, from the MO-2036 to the HPCI turbine require no further HELB evaluation because this portion of the line is pressurized less than 2% of the time.

The HPCI steam supply line begins in the main steam chase (Volume 16), is routed through the torus area (Volume 12) and terminates in the HPCI compartment (Volume 8).

I.2.1.5 RCIC (Steam) System

The only high energy line for the RCIC (Steam) System is the steam supply line PS17-3"-ED. This line is routed from the containment penetration X-10, to the turbine steam supply valve, MO-2078. Piping between containment penetration X-10 and the outboard primary containment isolation valve MO-2076 has been evaluated per the criteria defined in I.3.1.1(3)(b). The remaining portion of this line, from MO-2078 to the RCIC turbine require no further HELB evaluation because this portion of the line is pressurized less than 2% of the time.

The RCIC steam supply line begins in the main steam chase (Volume 16), is routed through the torus area (Volume 9), and terminates in the RCIC compartment (Volume 5).

I.2.1.6 Reactor Water Cleanup (RWCU) System

The high energy piping RWCU System consists of the RWCU supply line, from the primary containment penetration X-14 through the heat exchangers (REW3-4"-DBD/DCD/DB), the bypass piping around the regenerative heat exchanger (REW3-4"-DBD), the cross-tie from the supply line to valve RC-103, (REW3-4"-DBD), and the return line, from the regenerative heat exchanger to the HPCI and RCIC injection lines (REW6-3" DBD/DC/ED). The piping is routed from the primary containment penetration in the RWCU area (Volume 32) through the heat exchangers in the RWCU area (Volume 28, 29, 30 and 31), through the Reactor Building at 962 foot elevation (Volume 27) and the MG set room (Volume 26), through the west side of the Reactor Building at the 935 foot elevation (Volume 18) and terminates back in the main steam chase (Volume 16). Piping between containment penetration X-14 and the outboard primary containment isolation valve MO-2398 has been evaluated per the criteria defined in I.3.1.1(3)(b).

I.2.1.7 Instrument and Sample Lines

The instrument sensing lines from the primary cooling system and reactor vessel to the instrumentation represent high energy lines for the portion of the routing outside of the Primary Containment. Since all of these lines are 1 inch or smaller in nominal size, neither circumferential breaks nor longitudinal breaks are required to be postulated. In addition, all lines are equipped with excess flow check valves which would mitigate any break within a few seconds of the break occurring.

All instrument and sample lines, which tee from other high energy lines, are identified and evaluated with the specific system.

I.2.1.8 Core Spray System

Within the Core Spray (CS) System, only a small portion of each injection line (TW7-8"-ED and TW11-8"-ED) was determined to be high energy piping. The portion of the injection lines identified as high energy, runs from the containment penetration out to the inboard containment isolation valves, MO-1753 and MO-1754 respectively. Line TW7-8"-ED from primary containment penetration X-16A to valve MO-1754 is located entirely within the reactor water cleanup compartment (Volume 31). The remaining Core Spray line TW11-8"-ED from primary containment penetration X-16B to valve MO-1753, is located within a block wall compartment (Volume 21) above the Reactor Building 962' level. Both lines have been evaluated to meet the criteria defined in I.3.1.1(3)(b). The remaining portions of these lines from the inboard containment isolation valves to the Core Spray pump discharge nozzles were determined to require no further HELB evaluation because these lines are not pressurized more than 2% of the time. Portions of core spray piping have design temperatures that have increased from 196.7°F to 212°F as a result of EPU. Thus these lines are now classified as HELB lines, but require no further HELB evaluation because these lines are not pressurized more than 2% of the time.

I.2.1.9 Residual Heat Removal (RHR) System

The only portions of the RHR System considered high energy piping are on the LPCI injection lines (TW20-16"-DB and TW30-16"-DB) from the primary containment penetrations to the inboard containment isolation valves MO-2015 and MO-2014, respectively, and the shutdown cooling suction line REW10-18"-DB from the containment penetration to the outboard containment isolation valve MO-2030. Line TW20-16"-DB is located in the west shutdown cooling room (Volume 20) and terminates at penetration X-13A and valve MO-2015. Line TW30-16"-DB is located in the east shutdown cooling room (Volume 13) and terminates at penetration X-13B and valve MO-2014. Line REW10-18"-DB is located in Volume 13 and terminates at penetration X-12 and valve MO-2030. All of these lines have been evaluated per the criteria defined in I.3.1.1(3)(b). The remaining portions of these lines, from the inboard containment isolation valves to the RHR pump discharge nozzle, require no further HELB evaluation because these lines are pressurized less than 2% of the time.

The remaining RHR System lines were determined to not require further HELB evaluation. All of the piping comprising the shutdown cooling mode of RHR were identified as exempt from HELB evaluations because it is pressurized less than 2% of the time (Reference 12). Portions of core spray piping have design temperatures that have increased from 196.7°F to 212°F as a result of EPU. Thus these lines are now classified as HELB lines, but require no further HELB evaluation because these lines are not pressurized more than 2% of the time.

I.2.1.10 HPCI (Water) System

The high energy portion consists of the HPCI injection line, TW3-12"-ED, from the HPCI injection line valve (MO-2068) to the feedwater line. This portion of the line is located in the steam chase area (Volume 16). All other portions of the HPCI injection line are pressurized less than 2% of the time so they do not require further evaluation.

I.2.1.11 RCIC (Water) System

The high energy portion consists of the RCIC injection line, FW5-4"-ED, from the normally closed RCIC injection valve (MO-2107) to the Feedwater line. This portion of the line is located in the steam chase area (Volume 16). All other portions of the RCIC injection line and full flow test line are pressurized less than 2% of the time, so they do not require further evaluation.

I.2.1.12 Standby Liquid Control

Line CH2-1 1/2"-DC from containment penetration X-42 to check valve XP-6 is the only high energy portion of this system. It is located in the east shutdown cooling room (Volume 13). A terminal end break at the containment penetration X-42 has been evaluated per the criteria defined in I.3.1.1(3)(a).

I.2.1.13 Off-gas System

For the Off-gas System, the normal operating temperatures and pressures were used to determine the high energy lines on the system. However, no lines of the Off-gas System were excluded from the list of high energy piping based upon an operating pressure less than 275 psig.

With the exception of lines SHP101-4" and GOLE-107-6", all of the high energy lines in the Off-gas System are located in the Off-gas Storage and Compressor Building.

The steam supply line, SHP101-4" is routed from the condenser area (Volume 15) through the SJA E Room (Volume 14). One boundary for this line is the tee to line PS9-3"-ED and the other is in the Off-gas Storage and Compressor Building. This line is the discharge line for safety valve PSV-7474B, and hence this line would only be pressurized if the PSV lifted. Line GOLE-107-6" was excluded from consideration under the 2% criterion.

I.2.1.14 Control Rod Drive System

Within the CRD system, only a small portion of the CRD return line (CRD7-3"-DE) between check valve CRD-31 and the tee connection to the RWCU return line (REW6-3"-DC) is determined to be high energy piping. This line is located in the Reactor Building 935 foot floor (Volume 18). The remaining Scram Discharge Volume and associated piping are pressurized above 275 psig only after scram initiation. Therefore, these lines are excluded based on the 2% usage criteria (References 13 and 14).

I.2.1.15 Zinc Oxide Injection System (GEZIP)

The system consists of three 1 1/2 inch lines with one on the suction pipe of each feedwater pump and the third on feedwater pump P-2B discharge line. The entire GEZIP is considered high energy piping located in the feedwater pump area (Volume 3).

I.2.2 High Energy Line Designation List

Table I.2-1 provides a list of all high energy lines considered in this evaluation. In addition to identifying the high energy lines for each system considered, information is provided for each line's location, terminal points, normal operating or design conditions. Information for each HE line within a compartment was compiled by site inspection, and recorded in survey books (References 15 and 16).

The following descriptions identify the information provided in each column of Table I.2-1:

| | |
|---------------|--|
| Column 1 | System: Identifies the name of the plant system containing HE line. |
| Column 2 | P&ID: Identifies the "M" number or drawing number for the P&ID containing the line. |
| Column 3 | Volume: Identifies the volume in the Reactor Building (RB) or Turbine Building (TB) where the HE line is located. Volumes for piping excluded from HELB evaluation based the 2% criteria may not be shown. |
| Column 4 | Line Designation: Identifies plant line number of HE line. |
| Columns 5 & 6 | From/To: Identifies the segment of the HE line by official plant number. The From/To points may be a pump, heat exchanger, another pipe, tank, etc. |
| Columns 7-8 | Design or Normal Conditions: Identifies the design or normal operating conditions against which the line was identified as a HE line. |

Columns 9-10

Following exclusions are used:

The exclusions included piping with operating pressure above 275 psig or its operating temperature above 200°F for less than 2% of normal operating time (Reference 21 - MEB 3-1, B.2.e). Moderate energy lines are not postulated per section I.3.1.3 (Reference 64).

“SP” (superpipe) was used to designate that breaks were not required to be postulated per section I.1.2.11. This portion of piping has been evaluated per the criteria defined in Section I.3.1.1(3)(b).

Small diameter piping, 1 inch and less, is not included in this table.

01478936

Table I.2-1 High Energy Piping List

| HIGH ENERGY LINE DESIGNATION LIST | | | | | | | | | |
|-----------------------------------|-------------|---------------|------------------|-----------|----------------|---------------|------------|--------------|----|
| System | P&ID(s) | Volume(s) | Line Designation | From | To | Press psig | Temp F° | Exclusion(s) | |
| | | | | | | | | 2% | SP |
| Main Steam | M-115 | RB-16 | PS1-18-ED | X-7A | AO-2-86A | 1110 | 582 | | X |
| Main Steam | M-115/102 | RB-16 & TB-15 | PS1-18-ED | AO-2-86A | SV1 | 1110 | 582 | | |
| Main Steam | M-115 | RB-16 | PS2-18-ED | X-7B | AO-2-86B | 1110 | 582 | | X |
| Main Steam | M-115/102 | RB-16 & TB-15 | PS2-18-ED | AO-2-86B | SV2 | 1110 | 582 | | |
| Main Steam | M-115 | RB-16 | PS3-18-ED | X-7C | AO-2-86C | 1110 | 582 | | X |
| Main Steam | M-115/102 | RB-16 & TB-15 | PS3-18-ED | AO-2-86C | SV3 | 1110 | 582 | | |
| Main Steam | M-115 | RB-16 | PS4-18-ED | X-7D | AO-2-86D | 1110 | 582 | | X |
| Main Steam | M-115/102 | RB-16 & TB-15 | PS4-18-ED | AO-2-86D | SV4 | 1110 | 582 | | |
| Main Steam | M-102 | TB-15 & TB-37 | PS1-20 | CV1 | HP Turbine G-1 | 1110 | 582 | | |
| Main Steam | M-102 | TB-15 | PS2-20 | CV2 | HP Turbine G-1 | 1110 | 582 | | |
| Main Steam | M-102 | TB-15 | PS3-20 | CV3 | HP Turbine G-1 | 1110 | 582 | | |
| Main Steam | M-102 | TB-15 & TB-37 | PS4-20 | CV4 | HP Turbine G-1 | 1110 | 582 | | |
| Main Steam | M-102 | RB-16 | PS1-10-ED | PS1-18-ED | Cap | 1110 | 582 | | |
| Main Steam | M-102 | RB-16 | PS2-10-ED | PS2-18-ED | Cap | 1110 | 582 | | |
| Main Steam | M-102 | RB-16 | PS3-10-ED | PS3-18-ED | Cap | 1110 | 582 | | |
| Main Steam | M-102 | RB-16 | PS4-10-ED | PS4-18-ED | Cap | 1110 | 582 | | |
| Main Steam | M-102 | TB-15 | PS6-8-ED | BPCV12 | E-1A | 1110 | 582 | | |
| Main Steam | M-102 | TB-15 | PS8-8-ED | BPCV11 | E-1A | 1110 | 582 | | |
| Main Steam | M-102 | TB-15 | PS7-10-ED | PS11-6-ED | Cap | 1110 | 582 | | |
| Main Steam | M-102 | TB-15 | PS7-10-ED | PS11-6-ED | PS7-8-ED | 1110 | 582 | | |
| Main Steam | M-102 | TB-15 | PS7-10-ED | PS11-6-ED | PS10-5 | 1110 | 582 | | |
| Main Steam | M-102 | TB-15 | PS7-8-ED | PS7-10-ED | BPCV11 | 1110 | 582 | | |
| Main Steam | M-102 | TB-15 | PS7-8-ED | PS7-10-ED | BPCV12 | 1110 | 582 | | |
| Main Steam | M-102/104-1 | TB-15/14 | PS9-3-ED | PS1-18-ED | PS9-2-ED | 1110 | 582 | | |
| Main Steam | M-102/104-1 | TB-15/14 | PS9-3-ED | PS2-18-ED | PS9-2-ED | 1110 | 582 | | |
| Main Steam | M-104-1 | TB-14 | PS9-2-ED | PS9-3-ED | MS-23-1 | 1110 | 582 | | |
| Main Steam | M-104-1 | TB-14 | PS9-2-ED | PS9-3-ED | MS-24-1 | 1110 | 582 | | |
| Main Steam | M-104-1 | TB-14 | PS9-2-ED | PS9-3-ED | MS-23-2 | 1110 | 582 | | |

Table I.2-1 High Energy Piping List (Cont'd)

| HIGH ENERGY LINE DESIGNATION LIST | | | | | | | | | |
|-----------------------------------|-----------|-------------|------------------|-------------------|-------------------------|---------------|------------|--------------|----|
| System | P&ID(s) | Volume(s) | Line Designation | From | To | Press psig | Temp F° | Exclusion(s) | |
| | | | | | | | | 2% | SP |
| Main Steam | M-104-1 | TB-14 | PS9-2-ED | PS9-3-ED | MS-24-2 | 1110 | 582 | | |
| Main Steam | M-102 | TB-15 | PS11-6-ED | PS1-18-ED | PS7-10-ED | 1110 | 582 | | |
| Main Steam | M-102 | TB-15 | PS12-6-ED | PS2-18-ED | PS7-10-ED | 1110 | 582 | | |
| Main Steam | M-102 | TB-15 | PS13-6-ED | PS3-18-ED | PS7-10-ED | 1110 | 582 | | |
| Main Steam | M-102 | TB-15 | PS14-6-ED | PS4-18-ED | PS7-10-ED | 1110 | 582 | | |
| Main Steam | M-115 | RB-16 | PS15-3-ED | X-8 | MO-2374 | 1110 | 582 | | X |
| Main Steam | M-115/102 | RB-16 | PS15-3-EB | MO-2374 | Support SR-721 | 1110 | 582 | | |
| Main Steam | M-115/102 | RB-16 | PS15-3-EB | Support SR-721 | MO-2565 | 1110 | 582 | | |
| Main Steam | M-102 | RB-16 | PS15-3-EF | MO-2565 | 3"x 6" Red. Elbow | 600 | 490 | | |
| Main Steam | M-102 | RB-16/TB-15 | D4-6-EF/EB | 3"x 6" Red. Elbow | Condenser E-1A | 600 | 490 | | |
| Main Steam | M-102 | TB-15 | PS21-4-ED | PS7-10-ED | RO-1618 | 1110 | 582 | | |
| Main Steam | M-102 | TB-15 | PS30-18-EBD | PS1-18-ED | PS2-18-ED | 1110 | 582 | | |
| Main Steam | M-102 | TB-15 | PS30-18-EBD | PS1-18-ED | PS3-18-ED | 1110 | 582 | | |
| Main Steam | M-102 | TB-15 | PS30-18-EBD | PS1-18-ED | PS4-18-ED | 1110 | 582 | | |
| Main Steam | M-102 | TB-15 | PS30-10-EBD | PS30-18-EBD | Cap | 1110 | 582 | | |
| Main Steam | M-102 | TB-15 | MS-8 Branch | PS30-10-EBD | MS-8 | 1110 | 582 | | |
| Main Steam | M-102 | RB-16 | D1-1.5-ED | PS1-10-ED | D4-2-ED | 1110 | 582 | | |
| Main Steam | M-102 | RB-16 | D2-1.5-ED | PS2-10-ED | D4-2-ED | 1110 | 582 | | |
| Main Steam | M-102 | RB-16 | D3-1.5-ED | PS3-10-ED | D4-2-ED | 1110 | 582 | | |
| Main Steam | M-102 | RB-16 | D4-1.5-ED | PS4-10-ED | D4-2-ED | 1110 | 582 | | |
| Main Steam | M-102 | RB-16 | D4-2-ED | Cap | MO-2564 | 1110 | 582 | | |
| Main Steam | M-102 | RB-16 | D4-2-EB | MO-2564 | PS15-3-EB | 1110 | 582 | | |
| Main Steam | M-102 | TB-15 | D23-2-EB | D23-1-EB | MO-1197 | 1110 | 582 | | |
| Main Steam | M-102 | TB-15 | D40-1.5-EBD | PS30-10-EBD | MO-4000 | 1110 | 582 | | |
| Main Steam | M-102 | TB-15 | D40-1.5-EF | MO-4000 | D4-6-EF | 600 | 490 | | |
| Main Steam | M-102 | TB-15 | D40-1.5-EBD | PS30-10-EBD | RO-4001 | 1110 | 582 | | |
| Main Steam | M-102 | TB-15 | D40-1.5-EF | RO-4001 | D4-6-EF | 600 | 490 | | |
| Main Steam | M-102/103 | TB-15 | PS10-5 | PS7-10-ED | MO-1046 | 1110 | 582 | | |
| Main Steam | M-102/103 | TB-15 | PS10-3 | PS10-5 | MO-1045 | 1110 | 582 | | |
| Main Steam | M-103 | TB-15 | PS10-3 | MO-1045 | Steam Seal Regulator | 1110 | 582 | | |

Table I.2-1 High Energy Piping List (Cont'd)

| HIGH ENERGY LINE DESIGNATION LIST | | | | | | | | | |
|-----------------------------------|-----------|------------------|------------------|--------------|--------------|---------------|------------|--------------|----|
| System | P&ID(s) | Volume(s) | Line Designation | From | To | Press psig | Temp F° | Exclusion(s) | |
| | | | | | | | | 2% | SP |
| Condensate | M-105/106 | TB-1514' | C4A-16-GB | Heater E-12A | Heater E-13A | 450 | 250 | | |
| Condensate | M-106 | TB-15/21/23 | C4A-16-GB | Heater E-13A | P-2A | 450 | 321 | | |
| Condensate | M-106 | TB-3 | C8A-1.5-DE | C4A-16-GB | FW-179-1 | 450 | 321 | | |
| Condensate | M-105/106 | TB-15 | C4B-16-GB | Heater E-12B | Heater E-13B | 450 | 250 | | |
| Condensate | M-106 | TB-15/21/2/3 | C4B-16-GB | Heater E-13B | P-2B | 450 | 321 | | |
| Condensate | M-106 | TB-3 | C8B-1.5-DE | C4B-16-GB | FW-179-2 | 450 | 321 | | |
| Condensate | M-106 | TB-2 | C7-16-GB | C4A-16-GB | C4B-16-GB | 434 | 321 | | |
| Feedwater | M-106 | TB-2 | FW2-14-DE | FW2A-14-DE | FW2B-14-DE | 1550 | 323 | | |
| Feedwater | M-106 | TB-2 | FW2-6-DE | FW2-14-DE | FW2A-14-DE | 1550 | 323 | | |
| Feedwater | M-106 | TB-2 | FW2-6-DE | FW2-14-DE | FW2B-14-DE | 1550 | 323 | | |
| Feedwater | M-106 | TB-3/2/21/15/37 | FW2A-14-DE | P-2A | E-14A | 1550 | 323 | | |
| Feedwater | M-106 | TB-37/15 | FW2A-14-DE | E-14A | E-15A | 1550 | 357 | | |
| Feedwater | M-106 | TB-37 | FW2A-14-DE | E-15A | MO-1614 | 1550 | 410 | | |
| Feedwater | M-106/115 | TB-37/25 & RB-16 | FW2A-14-ED | MO-1614 | FW-91-1 | 1250 | 410 | | |
| Feedwater | M-115 | RB-16 | FW2A-14-ED | FW-91-1 | FW-94-1 | 1250 | 540 | | X |
| Feedwater | M-115 | RB-16 | FW2A-14-ED | FW-94-1 | X-9B | 1250 | 540 | | X |
| Feedwater | M-106 | TB-3 | V72B-1.5-DE | FW2B-14-DE | FW-199 | 1550 | 323 | | |
| Feedwater | M-106 | TB-42/15 | FW2B-14-DE | E-14B | E-15B | 1550 | 357 | | |
| Feedwater | M-106 | TB-37 | FW2B-14-DE | E-15B | MO-1615 | 1550 | 410 | | |
| Feedwater | M-106/115 | TB-37/15 & RB-16 | FW2B-14-ED | MO-1615 | FW-94-2 | 1250 | 410 | | |
| Feedwater | M-115 | RB-16 | FW2B-14-ED | FW-91-2 | FW-94-2 | 1250 | 540 | | X |
| Feedwater | M-115 | RB-16 | FW2B-14-ED | FW-94-2 | X-9A | 1250 | 540 | | X |
| Feedwater | M-106/105 | TB-3/15 | FW3-8-DE | FW2A-14-DE | CV-3489 | 1550 | 323 | X | |
| Feedwater | M-106/105 | TB-3/15 | FW4-8-DE | FW2B-14-DE | CV-3490 | 1550 | 323 | X | |
| Feedwater | M-106 | TB-37 | FW10-8-DE | FW2A/B-14-DE | FW-88-1,2 | 1550 | 305 | | |
| Feedwater | M-106 | TB-37/15 | FW10-8-DE | FW-88-1,2 | FW-88-3 | 1550 | 305 | | |
| Feedwater | M-106 | TB-15 | FW11-14-ED | FW2A-14-ED | FW2B-14-ED | 1250 | 400 | | |

Table I.2-1 High Energy Piping List (Cont'd)

| HIGH ENERGY LINE DESIGNATION LIST | | | | | | | | | |
|-----------------------------------|-----------|-----------|----------------------|---------------|-----------------|---------------|------------|--------------|----|
| System | P&ID(s) | Volume(s) | Line Designation | From | To | Press psig | Temp F° | Exclusion(s) | |
| | | | | | | | | 2% | SP |
| Feedwater | M-106 | TB-3/2 | FW12A-1.5-DE | FW2A-14-DE | P-2A | 1550 | 323 | | |
| Feedwater | M-106 | TB-3 | FW-66-1; 1.5" Branch | FW12A-1.5-DE | FW-66-1 | 1550 | 323 | | |
| Feedwater | M-106 | TB-3 | FW12B-1.5-DE | FW2B-14-DE | P-2B | 1550 | 323 | | |
| Feedwater | M-106 | TB-3 | FW-66-2; 1.5" Branch | FW12B-1.5-DE | FW-66-2 | 1550 | 323 | | |
| CRD | M-118/128 | RB-18 | CRD7-3-DE | REW6-3-DC | 1' west CRDH-44 | 1377 | 540 | | |
| CRD | M-118 | | CRD8-2-DC | CRD3-2-DC | CRD20A-1-DC | 1785 | 570 | X | |
| CRD | M-118 | | CRD8-2-DC | CRD3-2-DC | CRD20B-1-DC | 1785 | 570 | X | |
| CRD | M-118 | | CRD8-2-DC | CRD3-2-DC | CRD20C-1-DC | 1785 | 570 | X | |
| CRD | M-118 | | CRD8-2-DC | CRD3-2-DC | CRD20D-1-DC | 1785 | 570 | X | |
| CRD | M-118 | | CRD8-2-DC | CRD3-2-DC | Reducer | 1785 | 570 | X | |
| CRD | M-119 | | CRD13A-4-DB | CRD16A-12-CCD | CRD17A-1-CCD | 1265 | 575 | X | |
| CRD | M-119 | | CRD13B-4-DB | CRD16B-12-CCD | CRD17B-1-CCD | 1265 | 575 | X | |
| CRD | M-119 | | CRD14A-6-DB | CRD16A-12-CCD | CRD17A-1-CCD | 1265 | 575 | X | |
| CRD | M-119 | | CRD14B-6-DB | CRD16B-12-CCD | CRD17B-1-CCD | 1265 | 575 | X | |
| CRD | M-119 | | CRD15A-4-DB | CRD16A-12-CCD | CRD17A-1-CCD | 1265 | 575 | X | |
| CRD | M-119 | | CRD15B-4-DB | CRD16B-12-CCD | CRD17B-1-CCD | 1265 | 575 | X | |
| CRD | M-119 | | CRD16A-12-CCD | CRD16A-24-CCD | Blind Flange | 1265 | 575 | X | |
| CRD | M-119 | | CRD16A-24-CCD | CRD16A-12-CCD | CRD16A-2-CCD | 1265 | 575 | X | |
| CRD | M-119 | | CRD16A-2-CCD | CRD16A-24-CCD | CV3-33C | 1265 | 575 | X | |
| CRD | M-119 | | CRD16B-12-CCD | CRD16B-24-CCD | Blind Flange | 1265 | 575 | X | |
| CRD | M-119 | | CRD16B-24-CCD | CRD16B-12-CCD | CRD16B-2-CCD | 1265 | 575 | X | |
| CRD | M-119 | | CRD16B-2-CCD | CRD16B-24-CCD | CV3-33D | 1265 | 575 | X | |
| RHR | M-120 | | TW19-10-GE | TW19-14-GE | P-202B | 510 | 330 | X | |
| RHR | M-120 | | TW19-10-GE | TW19-14-GE | P-202D | 510 | 330 | X | |
| RHR | M-120 | | TW19-14-GE | TW19-10-GE | E-200B | 510 | 330 | X | |
| RHR | M-121 | | TW29-10-GE | TW29-14-GE | P-202A | 510 | 330 | X | |
| RHR | M-121 | | TW29-10-GE | TW29-14-GE | P-202C | 510 | 330 | X | |
| RHR | M-121 | | TW29-14-GE | TW29-10-GE | E-200A | 510 | 330 | X | |
| RHR | M-120 | | TW20-14-GE | E-200B | TW19-14-GE | 510 | 330 | X | |
| RHR | M-120 | | TW20-14-GE | E-200B | TW20-16-GE | 510 | 330 | X | |
| RHR | M-120 | | PAS-57-4 Branch | TW20-14-GE | PAS-57-4 | 510 | 330 | X | |

01478936

Table I.2-1 High Energy Piping List (Cont'd)

| HIGH ENERGY LINE DESIGNATION LIST | | | | | | | | | |
|-----------------------------------|-----------|-----------|------------------|------------|------------|---------------|------------|--------------|----|
| System | P&ID(s) | Volume(s) | Line Designation | From | To | Press psig | Temp F° | Exclusion(s) | |
| | | | | | | | | 2% | SP |
| RHR | M-120 | | TW20-16-GE | TW20-14-GE | MO-2013 | 510 | 330 | X | |
| RHR | M-120 | | RHR-59-2 Branch | TW20-16-GE | RHR-59-2 | 510 | 330 | X | |
| RHR | M-120 | | TW20-16-DB | MO-2013 | MO-2015 | 1248 | 562 | X | |
| RHR | M-120 | RB-20 | TW20-16-DB | MO-2015 | X-13A | 1248 | 562 | | X |
| RHR | M-120 | | TW21-2-GE | TW19-10-GE | RO-1999 | 510 | 330 | X | |
| RHR | M-120 | | TW21-2-GE | TW19-10-GE | RO-2001 | 510 | 330 | X | |
| RHR | M-120/121 | | TW22-16-GE | TW20-16-GE | TW22-14-GE | 510 | 330 | X | |
| RHR | M-120/121 | | TW22-14-GE | TW22-16-GE | TWH-168 | 510 | 330 | X | |
| RHR | M-120/121 | | TW22-14-GE | TWH-168 | TW22-16-GE | 510 | 330 | X | |
| RHR | M-120/121 | | TW22-16-GE | TW22-14-GE | TW30-16-GE | 510 | 330 | X | |
| RHR | M-121 | | TW30-14-GE | E-200A | TW29-14-GE | 510 | 330 | X | |
| RHR | M-121 | | RHR-79 Branch | TW30-14-GE | RHR-79 | 510 | 330 | X | |
| RHR | M-121 | | TW30-14-GE | E-200A | TW30-16-GE | 510 | 330 | X | |
| RHR | M-121 | | PAS-57-5 Branch | TW30-14-GE | PAS-57-5 | 510 | 330 | X | |
| RHR | M-121 | | TW30-16-GE | TW30-14-GE | MO-2012 | 510 | 330 | X | |
| RHR | M-121 | | TW30-16-DB | MO-2012 | MO-2014 | 1248 | 562 | X | |
| RHR | M-121 | RB-13 | TW30-16-DB | MO-2014 | X-13B | 1248 | 562 | | X |
| RHR | M-121 | | TW31-2-GE | TW29-10-GE | RO-1998 | 510 | 330 | X | |
| RHR | M-121 | | TW31-2-GE | TW29-10-GE | RO-2000 | 510 | 330 | X | |
| RHR | M-121 | | TW36-4-GE | TW30-14-GE | Capped End | 510 | 330 | X | |
| RHR | M-121 | | TW37-4-GE | TW22-14-GE | MO-2407 | 510 | 281 | X | |
| RHR | M-121 | RB-13 | REW10-18-ED | X-12 | MO-2030 | 1248 | 570 | | X |
| RHR | M-121/135 | | FPW12-8-GE | TW22-14-GE | PC-18 | 510 | 263 | X | |
| RHR | M-121/112 | | SW9-8-GE | TW33-12-GE | SW9-8-GF | 510 | 263 | X | |
| RHR | M-120 | | D80-2-GE | TW19-10-GE | RHR-30-2 | 275 | 281 | X | |
| RHR | M-120 | | D81-2-GE | TW19-10-GE | RHR-30-4 | 275 | 281 | X | |
| RHR | M-121 | | D84-3-GE | TW29-10-GE | RHR-47 | 510 | 330 | X | |
| RHR | M-120 | | RV51-2-GE | TW20-16-GE | RV-2005 | 275 | 263 | X | |
| RHR | M-121 | | RV52-2-GE | TW30-14-GE | RV-2004 | 275 | 263 | X | |
| RHR | M-114-1 | | SC10-3-GC | CST-86 | Branches | 510 | 263 | X | |
| RHR | M-114-1 | | SC10A-2-GC | SC10-3-GC | SC10A-2-GE | 510 | 263 | X | |

Table I.2-1 High Energy Piping List (Cont'd)

| HIGH ENERGY LINE DESIGNATION LIST | | | | | | | | | |
|-----------------------------------|-------------|-----------|------------------|------------|-------------|---------------|------------|--------------|----|
| System | P&ID(s) | Volume(s) | Line Designation | From | To | Press psig | Temp F° | Exclusion(s) | |
| | | | | | | | | 2% | SP |
| RHR | M-114-1/121 | | SC10A-2-GE | SC10A-2-GC | TW30-16-GE | 510 | 263 | X | |
| RHR | M-114-1 | | SC10B-2-GC | SC10-3-GC | SC10B-2-GE | 510 | 263 | X | |
| RHR | M-114-1/121 | | SC10B-2-GE | SC10B-2-GC | REW10-18-HE | 510 | 263 | X | |
| RHR | M-114-1 | | SC10C-2-GC | SC10-3-GC | SC10C-2-GE | 510 | 263 | X | |
| RHR | M-114-1/121 | | SC10C-2-GE | SC10C-2-GC | TW33-12-GE | 510 | 263 | X | |
| RHR | M-114-1 | | SC10D-2-GC | SC10-3-GC | SC10D-2-GE | 510 | 263 | X | |
| RHR | M-114-1/120 | | SC10D-2-GE | SC10D-2-GC | TW20-16-GE | 510 | 263 | X | |
| RHR | M-114-1 | | SC29-3-GC | CST-103-2 | Branches | 510 | 263 | X | |
| RHR | M-114-1 | | SC29-2-GC | SC29-3-GC | SC29-2-GE | 510 | 263 | X | |
| RHR | M-114-1/122 | | SC29-2-GE | SC29-2-GC | TW7-10-GE | 510 | 263 | X | |
| RHR | M-114-1 | | SC29B-2-GC | SC29-3-GC | SC29B-2-GE | 510 | 263 | X | |
| RHR | M-114-1/120 | | SC29B-2-GE | SC29B-2-GC | TW23-12-GE | 510 | 263 | X | |
| RHR | M-120 | | TW23-12-GE | TW20 | MO-2021 | 510 | 212 | X | |
| RHR | M-120 | | TW23-12-GE | MO-2021 | X39A | 275 | 212 | X | |
| RHR | M-120 | | TW24-12-GE | TW23 | MO-2007 | 510 | 212 | X | |
| RHR | M-120 | | TW24-12-GE | MO-2007 | MO-2009 | 275 | 212 | X | |
| RHR | M-120 | | TW25-4-GE | TW24-12 | MO-2011 | 275 | 212 | X | |
| RHR | M-121 | | TW34-12-GE | TW33-12 | MO-2006 | 510 | 212 | X | |
| RHR | M-121 | | TW34-12-GE | MO-2006 | MO-2008 | 275 | 212 | X | |
| RHR | M-121 | | TW35-4-GE | TW34-12 | MO-2010 | 275 | 212 | X | |
| Core Spray | M-122 | | TW11-10-GE | P-208A | MO-1751 | 500 | 212 | X | |
| Core Spray | M-122 | | TW12-8-GE | TW11 | RO-1747 | 500 | 212 | X | |
| Core Spray | M-122 | | TW13-2 1/2-HE | TW11 | RO-1743 | 500 | 212 | X | |
| Core Spray | M-114-1/122 | | SC30-2-GE | TW11 | CST-103-1 | 500 | 212 | X | |
| Core Spray | M-122 | | TW7-10-GE | P-208B | MO-1752 | 500 | 212 | X | |
| Core Spray | M-122 | | TW8-8-GE | TW7 | RO-1748 | 500 | 212 | X | |
| Core Spray | M-122 | | TW9-2 1/2-HE | TW7 | RO-1744 | 500 | 212 | X | |
| Core Spray | M-114-1/122 | | SC29-2-GE | SC29-3-GE | TW7-10-GE | 500 | 212 | X | |
| Core Spray | M-122 | RB-31 | TW7-8-ED | X-16A | MO-1754 | 1136 | 570 | | X |
| Core Spray | M-122 | | TW7-8-ED | MO-1754 | MO-1752 | 1136 | 570 | X | |
| Core Spray | M-122 | RB-22 | TW11-8-ED | X-16B | MO-1753 | 1136 | 570 | | X |

Table I.2-1 High Energy Piping List (Cont'd)

| HIGH ENERGY LINE DESIGNATION LIST | | | | | | | | | |
|-----------------------------------|---------|----------------|------------------------|------------|-----------|---------------|------------|--------------|----|
| System | P&ID(s) | Volume(s) | Line Designation | From | To | Press psig | Temp F° | Exclusion(s) | |
| | | | | | | | | 2% | SP |
| Core Spray | M-122 | | TW11-8-ED | MO-1753 | MO-1751 | 1136 | 570 | X | |
| HPCI (Steam) | M-123 | RB-16 | PS18-8-ED | X-11 | MO-2035 | 1110 | 582 | | X |
| HPCI (Steam) | M-123 | RB-16/12/8 | PS18-8-ED | MO-2035 | MO-2036 | 1110 | 582 | | |
| HPCI (Steam) | M-123 | RB-8 | PS18-8-ED | MO-2036 | HO-7 | 1110 | 582 | X | |
| HPCI (Steam) | M-123 | RB-16 | 6" Heating Steam Conn. | PS18-8-ED | Cap | 1110 | 582 | | |
| HPCI (Water) | M-124 | RB-16 | TW3-12-ED | FW2B-14-ED | MO-2068 | 1250 | 540 | | |
| HPCI (Water) | M-124 | RB-16/12 | TW3-12-ED | MO-2068 | SR-597 | 1375 | 453 | | |
| RCIC (Water) | M-126 | RB-16 | FW5-4-ED | FW2A-14-ED | AO-13-22 | 1250 | 540 | | |
| RCIC (Water) | M-126 | RB-16 | FW5-4-ED | AO-13-22 | MO-2107 | 1250 | 453 | | |
| RCIC (Water) | M-126 | RB-16/9/5 | FW5-4-ED | MO-2107 | MO-2106 | 1375 | 453 | | |
| RCIC (Water) | M-126 | RB-16/9 | FW5-4-ED | MO-2107 | MO-2110 | 1375 | 453 | | |
| RCIC (Steam) | M-125 | RB-16 | PS17-3-ED | X-10 | MO-2076 | 1110 | 582 | | X |
| RCIC (Steam) | M-125 | RB-16/9 | PS17-3-ED | MO-2076 | SR-567 | 1110 | 582 | | |
| RCIC (Steam) | M-125 | RB-16 | 3" Heating Steam Conn. | PS17-3-ED | Cap | 1110 | 582 | | |
| RCIC (Steam) | M-125 | RB-9/5 | PS17-3-ED | SR-567 | MO-2078 | 1110 | 582 | | |
| RCIC (Steam) | M-125 | RB-5 | PS17-3-ED | MO-2078 | MO-2080 | 1110 | 582 | X | |
| SLC | M-127 | RB-13/14/22 | CH2-1.5-DC | X-42 | XP-6 | 1275 | 575 | | |
| SLC | M-127 | RB-13/14/22 | CH2-1.5-DC | XP-6 | XP-11-14A | 1275 | 575 | X | |
| SLC | M-127 | RB-13/14/22 | CH2-1.5-DC | XP-6 | XP-11-14B | 1275 | 575 | X | |
| SLC | M-127 | RB-13/14/22 | XP-30 Branch | CH2-1.5-DC | XP-30 | 1275 | 575 | X | |
| RWCU | M-128 | RB-32 | REW3-4-ED | X-14 | MO-2398 | 1136 | 570 | | X |
| RWCU | M-128 | RB-32 | REW3-4-DBD | MO-2398 | RC-103 | 1136 | 570 | | |
| RWCU | M-128 | RB-32 | TE-12-92; 1.25" Branch | REW3-4-DBD | TE-12-92 | 1136 | 570 | | |
| RWCU | M-128 | RB-32/31/30 | REW3-4-DBD | MO-2398 | RC-102 | 1136 | 570 | | |
| RWCU | M-128 | RB-32/31/30 | REW3-4-DBD | MO-2398 | E-201(11) | 1136 | 570 | | |
| RWCU | M-128 | RB-30 | REW3-4-DBD | E-201(11) | E-201(12) | 1136 | 570 | | |
| RWCU | M-128 | RB-30 | REW3-4-DBD | E-201(12) | E-201(13) | 1136 | 570 | | |
| RWCU | M-128 | RB-30 | REW3-4-DBD | RC-102 | E-201(13) | 1136 | 570 | | |
| RWCU | M-128 | RB-30 | REW3-4-DBD | E-201(13) | E-202(11) | 1136 | 570 | | |
| RWCU | M-128 | RB-30 | TE-12-94; 1.25" Branch | REW3-4-DB | TE-12-94 | 1136 | 570 | | |
| RWCU | M-128 | RB-30/28/29/27 | REW6-3-DBD | E-201(11) | MO-2399 | 1377 | 540 | | |

Table I.2-1 High Energy Piping List (Cont'd)

| HIGH ENERGY LINE DESIGNATION LIST | | | | | | | | | |
|-----------------------------------|------------|-------------------|------------------------|----------------|----------------|---------------|------------|--------------|----|
| System | P&ID(s) | Volume(s) | Line Designation | From | To | Press psig | Temp F° | Exclusion(s) | |
| | | | | | | | | 2% | SP |
| RWCU | M-128 | RB-30 | TE-12-109;1.25" Branch | REW6-3-DBD | TE-12-109 | 1377 | 540 | | |
| RWCU | M-128 | RB-27/26/18 | REW6-3-DC | MO-2399 | CRD Tee | 1377 | 540 | | |
| RWCU | M-128 | RB-18/16 | REW6-3-DC | CRD Tee | SR-727 | 1317 | 540 | | |
| RWCU | M-128 | RB-16 | REW6-3-DC | SR-727 | FW5 Tee | 1317 | 540 | | |
| RWCU | M-128 | RB-16 | REW6-3-DB | FW5 Tee | RC-7-1 | 1317 | 540 | | |
| RWCU | M-128/124 | RB-16 | REW6-3-ED | RC-7-1 | TW3-12-ED | 1250 | 540 | | |
| RWCU | M-128/126 | RB-16 | REW6-3-DB | FW5 Tee | FW5-4-ED | 1317 | 540 | | |
| Off Gas | NH-54817-4 | (Offgas Building) | CN103-2-EN1C | E-603A | V-808A | 300 | 422 | | |
| Off Gas | NH-54818-1 | (Offgas Building) | CN104-2-EN1C | E-603B | V-808B | 300 | 422 | | |
| Off Gas | NH-54818-1 | (Offgas Building) | GOLE107-6-HN2C | PSV-7574B | E1B | 285 | 422 | X | |
| Off Gas | NH-54817-4 | (Offgas Building) | GOLE109-6-HN2C | PSV-7574A | GOLE107-6-HN2C | 285 | 422 | | |
| Off Gas | NH-54817-4 | TB-15/14 | SHP101-4-HN1C | PS9-3-ED | TB Wall | 1000 | 546 | | |
| Off Gas | NH-54817-4 | (Offgas Building) | SHP101-4-HN1C | TB Wall | PCV-7497A | 1000 | 546 | | |
| Off Gas | NH-54817-4 | (Offgas Building) | SHP101-4-EN1C | PCV-7497A | J-1202A | 300 | 422 | | |
| Off Gas | NH-54817-4 | (Offgas Building) | SHP102-4-HN1C | SHP101-4-HN1C | PCV-7497B | 1000 | 546 | | |
| Off Gas | NH-54817-4 | (Offgas Building) | SMP101-3-EN1C | SMPE103-4-EN1C | E-603A | 300 | 422 | | |
| Off Gas | NH-54818-1 | (Offgas Building) | SMP102-3-EN1C | SMPE104-4-EN1C | E-603B | 300 | 422 | | |
| Off Gas | NH-54817-4 | (Offgas Building) | SMPE103-4-EN1C | J-1202A | MS-52-1 | 300 | 422 | | |
| Off Gas | NH-54817-4 | (Offgas Building) | SMPE103-4-HN2C | MS-52-1 | J-1201A | 300 | 422 | | |
| Off Gas | NH-54818-1 | (Offgas Building) | SMPE104-4-EN1C | J-1202B | MS-52-2 | 300 | 422 | | |
| Off Gas | NH-54818-1 | (Offgas Building) | SMPE104-4-HN2C | MS-52-2 | J-1201B | 300 | 422 | | |
| Off Gas | NH-54817-4 | (Offgas Building) | SMP109-4-EN1C | SHP101-4-EN1C | PSV-7574A | 300 | 422 | | |
| Off Gas | NH-54818-1 | (Offgas Building) | SMP110-4-EN1C | SHP102-4-EN1C | PSV-7574B | 300 | 422 | | |

**APPENDIX I EVALUATION OF HIGH ENERGY LINE
BREAKS OUTSIDE CONTAINMENT****I.3 Break Analysis**

The postulated break locations for each high energy line are based on the criteria established in the Giambusso letter (Reference 2) SRP 3.6.2 (Reference 4) and Generic Letter 87-11 (Reference 21). The systems evaluated were the Main Steam, HPCI, RCIC, Feedwater, Condensate, RWCU, and miscellaneous sensing and sample lines. Calculations were performed in accordance with the "HELB" Evaluation Criteria (Reference 23) to determine where the break locations would be postulated for high energy piping (Reference 17). For each system, the calculation results are listed below. The break locations for high energy lines are shown on the drawings provided in the figures section of this appendix.

I.3.1 Selection of Break Locations

Break locations were postulated for all high energy piping with a nominal diameter greater than 1 inch (Criterion 3 - Reference 2), and a normal operation time exceeding 2% of the total unit operation time (Criterion B.2.e - Reference 4) in accordance with the following criteria:

I.3.1.1 Class I (Lines for which piping analyses, that includes seismic, has been performed)

Breaks were postulated for each Class I high energy line as follows:

- (1) At terminal ends (MEB 3-1, B.1.c(2)(3) - Reference 21);
- (2) At any intermediate location where normal operating and seismic stresses exceeds $0.8(\text{Sh} + \text{SA})$ or $0.8(\text{SA})$ (MEB 3-1, B.1.c(2)(3) - Reference 21);
- (3) At the terminal ends of the high energy piping that penetrates the Primary Containment boundary. The postulated HELB shall be either:
 - (a) At the primary containment penetration. This point is identified as the weld between the containment penetration and the piping. Evaluations were performed to demonstrate that the containment integrity is maintained with a HELB at the containment penetration.
 - or,
 - (b) At the weld between the outboard containment isolation valve and the piping not within the Primary Containment. Piping between the containment penetrations and the outboard containment isolation valves has been evaluated to meet the criteria found in References 2 and 4. This criteria does not require breaks to be postulated in these segments
- (4) In accordance with Generic Letter 87-11 (Reference 21), seismically analyzed and supported high energy lines are not required to have postulated intermediate HELB or critical crack locations, provided that the stress level at each potential intermediate break location is less than the values identified in Section I.3.1.1 (2) above (Reference 21).

01478936

01478936

Critical cracks were postulated where normal operating and seismic stresses exceed $0.4 (1.2Sh + SA)$. Critical cracks are not required to be postulated in portions of piping from the containment wall to and including the inboard and outboard isolation valves (MEB 3-1, B.1.e(2) – Reference 21).

I.3.1.2 Class II (Lines for which no seismic analyses has been performed)

Break locations postulated for each Class II high energy line were selected as follows:

- (1) At terminal ends.
- (2) At each intermediate location of potential high stress or fatigue such as pipe fittings, valves, flanges and welded on attachments.
- (3) Critical cracks were postulated at locations that result in the most severe environmental consequences (MEB 3-1, B.1.e(3) – Reference 21).

In those cases where a Class II high energy line is analyzed to Class I piping seismic requirements, break locations were selected using the criteria in Section I.3.1.1.

I.3.1.3 Breaks in Moderate-Energy and/or Non-High Energy Lines

MNGP does not specify Moderate-Energy lines described in Generic Letter 87-11 (Reference 21). High energy line break rules or high energy line crack rules do not specify to postulate high energy line breaks or high energy line cracks in non-high energy lines (References 2, 6, and 64).

I.3.2 **Break Types**

Circumferential breaks were postulated and evaluated at terminal ends. In addition, circumferential breaks were postulated at intermediate break locations on high energy piping with a nominal diameter exceeding 1 inch. Longitudinal breaks were postulated at all intermediate locations on high energy piping with a nominal diameter equal to or exceeding 4 inches. Longitudinal breaks were postulated with an orientation of any point around the pipe circumference and a break area equal to the effective cross sectional flow area immediately upstream of the break location. (Criterion 3 - Reference 2).

Critical cracks were postulated to occur in piping carrying high energy fluids. The critical crack size was taken to be $1/2$ the pipe diameter in length and $1/2$ the wall thickness in width (Criterion 2 - Reference 2)

01478936

01478936

01478936

01478936

I.3.3 HELB Interactions

The effects on Safe Shutdown Equipment from high energy lines can be divided into five (5) separate types of interactions. These interactions include:

- Pipe Whip
- Jet Impingement
- Flooding
- Environmental Effects
- Compartment Pressurization

The evaluation criteria for each of these interactions was performed by applying the following criteria:

I.3.3.1 Pipe Whip Effects

Pipe whip is defined as the mechanical reaction caused by high energy fluid exiting a ruptured pipe. For each postulated break, the effects of pipe whip were evaluated. Pipe whip movement was assumed to occur about a plastic hinge located at a point or points selected using the following guidelines (Reference 3):

- (1) The pipe run terminal point;
- (2) The nearest pipe fitting which will experience high bending moment. Generally this will occur at the second elbow from the break point.
- (3) A pipe whip restraint;
- (4) Any structure or equipment which can reasonably be expected to restrain the movement of the pipe (e.g., concrete wall or pressure vessel).
- (5) Ordinary pipe supports were considered ineffective restraints during whip.

Circumferential breaks were assumed to cause pipe whip about the plastic hinge in a plane defined by the pipe geometry and in the direction of jet reaction (Criterion B.3.a.5 - Reference 4). Longitudinal breaks were assumed to cause pipe whip movement in the direction opposite of the fluid flow normal to the axis of the pipe at the point of the break (Footnote 8 to Criterion 3 - Reference 2). Additionally, it was assumed that the geometry of the pipe segment between the selected hinges remained unchanged throughout the pipe whip path.

The area of influence of pipe whip was considered to be the worst case area determined applying the criteria identified above. In general, circumferential breaks cause the worst case pipe whip conditions.

In evaluating the effect of pipe whip on safe shutdown components and structures, the following criteria were used:

- (1) The energy level in a whipping pipe was considered to be insufficient to rupture an impacted pipe of:
 - (a) Equal or greater nominal pipe size and
 - (b) Equal or heavier wall thickness (Footnote 1 to Criterion 1.d - Reference 2).
- (2) Impacted pipe of lesser nominal pipe size or thinner wall thickness was assumed to rupture or require further evaluation (Footnote 1 to Criterion 1.d - Reference 2).
- (3) All electrical cables in cable trays, conduits, or other raceways impacted by a whipping pipe were assumed to be severed or require further evaluation. Other electrical and instrument and control (I & C) components were assumed to fail or require further evaluation (Reference 2).
- (4) Structural components impacted by a whipping pipe were assumed to fail or require further evaluation (Reference 2).

I.3.3.2 Jet Impingement Effects

For each postulated break, the effects of jet impingement were evaluated. The criteria used to evaluate these effects were as follows:

- (1) All jets were assumed to be influenced by gravity (Section 7.1 - Reference 7). However, because of the jet fluid velocities and the relative proximity of the targets, straight line jet travel was assumed.
- (2) Jets from a circumferential break were assumed to sweep the arc traveled during the whip (Section 8.1 - Reference 7).
- (3) A longitudinal break was assumed to occur at any azimuth location on the pipe circumference with a break area equal to the effective cross sectional flow area immediately upstream of the break location. (Footnote 8 to Criterion 3 - Reference 2).
- (4) A jet discharging saturated steam, or a mixture of steam and water with a fluid temperature greater than the saturation temperature at the surrounding environmental pressure, was assumed to expand in a 10° half-angle cone.¹ (Section 7.2 - Reference 7 and page 3.6.2-8 Reference 4). (Note: This criterion is consistent with the previous Monticello HELB evaluation. References 1 and 6).

1. Because of the uncertainties associated with break orientation and jet geometry, an additional degree of conservatism was established to include potential targets beyond the 10° half angle cone. In some cases, targets up to 45° off the axis of the jet were considered hit and incapable of performing their safe shutdown function.

- (5) A jet discharging saturated liquid water or subcooled water was characterized by a constant diameter jet for purposes of determining the jet force on targets. For the purpose of determining potential targets, saturated liquid water or subcooled water jets were assumed to expand, at least at a 10° half angle cone (Section 7.2, Reference 7 and page 3.6.2-8 - Reference 4). (Note: This criterion is more conservative than that used in the previous Monticello HELB evaluation - References 1 and 6).
- (6) The magnitude of jet force was determined using the criteria of Item C.(4) on Page 3.6.2-7 of SRP 3.6.2 (Reference 4). The criteria for taking into account the geometric considerations of a fluid jet were provided in Appendix D of Reference 7.
- (7) A postulated jet was considered effective until it struck a solid barrier upon which the jet momentum is reduced to zero. All safe shutdown components, pipes, and structures impacted by the jet were considered incapable of performing their safe shutdown function or required further evaluation (Section 7.2 - Reference 7).
- (8) Where the jet must travel a significant distance to impact safe shutdown components or structures, simplified calculations were used to demonstrate that the jet impingement forces were negligible.

I.3.3.3 Flooding Effects

In each area or compartment where breaks were postulated, the potential adverse effects from flooding were identified using the following criteria (Section 10 - Reference 7):

- a. Vulnerability of safe shutdown equipment due to flooding because of location and configuration.
- b. Potential rupture sizes and the available quantity of water.
- c. Absence of floor drains or doorways which could provide drainage.
- d. Existence of flood protection in the form of dams or sumps with pumps.

Environmental effects are evaluated in the MNGP Environmental Qualification (EQ) program based on the break cases considered in the HELB analysis. Bounding profiles for environmental conditions are identified and flooding effects are evaluated based on these conditions.

I.3.3.4 Environmental Effects and Compartment Pressurization

A review was conducted to determine if the safe shutdown components in compartments or areas in which breaks have been postulated are qualified for worst case environmental conditions including the effects of compartment pressurization. Attention was focused on closed compartments which contained high energy lines. Environmental effects are evaluated in the MNGP Environmental Qualification (EQ) program based on the break cases considered for the HELB evaluations. Bounding profiles for environmental conditions are identified, including compartment pressurization, heatup and flooding effects.

I.3.4 System Break Locations

System break and critical crack locations are identified in References 26 through 57.

I.4 Safe Shutdown Requirements

The systems, components, and structures used to mitigate the consequences of a postulated HELB and bring the unit to safe shutdown condition are the HELB targets of concern. Identification of these systems was required, so that evaluation of the effects of potential HELBs could be assessed. The basis for determining these systems can be found by defining the safe shutdown performance goals and conservatively assuming a coincident loss of off-site power.

The Safe Shutdown performance goals, as identified in Reference 5 are:

- (1) Insert sufficient negative reactivity to maintain the reactor in a subcritical condition.
- (2) Restore and maintain reactor vessel water level above the active fuel level precluding fuel cladding failure.
- (3) Prevent over pressurization of the reactor vessel.
- (4) Remove decay heat generated in the core with sufficient capability to allow the reactor to be brought from hot to cold shutdown and maintain the cold shutdown condition.

I.4.1 Safe Shutdown Systems

Based upon the information provided in the Updated Safety Analysis Report, the previous HELB analysis (Reference 1), and the Fire Protection Safe Shutdown Analysis Report (Reference 5), the following list identifies those systems, for which credit can be taken to satisfy the performance goals above and thus effect a safe shutdown in the event of a postulated HELB.

- (1) Reactor Protection System (RPS), Control Rod Drive System (CRD) and Control Rods.
- (2) High Pressure Coolant Injection (HPCI).
- (3) Reactor Pressure Relief - Safety/Relief Valves (SRVs)
- (4) Residual Heat Removal (RHR) including:
 - (a) Low Pressure Coolant Injection (LPCI) Mode
 - (b) Shutdown Cooling (SDC) Mode
 - (c) Suppression Pool Cooling (SPC) Mode

- (5) Core Spray (CS).
- (6) RHR Service Water
- (7) Shutdown Instrumentation (See Section I.4.1.1)
- (8) Auxiliary Support
 - (a) On-site Power and Distribution System
 - (b) Emergency Service Water (ESW)
 - (c) Emergency Diesel Generator Auxiliary Systems
 - (d) DC Power Systems
 - (e) Heating, Ventilation and Air Conditioning (HVAC) Systems

I.4.1.1 Shutdown Instrumentation

The minimum required process instrumentation to assure safe shutdown is as follows:

- (1) Reactor Vessel Level Indication
- (2) Reactor Pressure Indication
- (3) Suppression Pool Temperature Indication
- (4) Suppression Pool Level Indication

I.4.2 **Description of Safe Shutdown Paths**

The paths to safe shutdown for any postulated HELB coincident with a loss of off-site power and a single active failure can be described by identifying the shutdown priority using the performance goals previously described.

Safe shutdown can be described as reducing RPV pressure and temperature from the normal operating conditions of approximately 1015 psia and 545°F to a RPV coolant temperature of less than 212°F and the RPV vented with the reactor in a subcritical condition and no fuel damage or breach of Primary Containment. The minimum equipment necessary for safe shutdown includes the following:

- (1) The Reactor Protection System and Control Rod Drive System (negative reactivity function)

- (2) 3 SRVs (RPV overpressure protection and decay heat removal functions)
- (3) 1 RHR pump (LPCI Mode) or 1 Core Spray pump and 1 RHR pump in SPC Mode (reactor vessel level maintenance and decay heat removal functions)
- (4) 1 RHR Service Water pump (decay heat removal function)
- (5) 1 Emergency Diesel Generator (EDG), EDG auxiliaries, 1 EDG Emergency Service Water pump, 1 Emergency Service Water pump, and 1 Division of safety related power distribution (for all functions except negative reactivity)
- (6) Shutdown Instrumentation (from Reference 5)
 - (a) Reactor Vessel Level
 - (b) Reactor Pressure
 - (c) Suppression Pool Temperature
 - (d) Suppression Pool Level

Evaluations performed to determine acceptable paths to safe shutdown utilized the above described minimum necessary equipment.

Additional safe shutdown paths can be described depending on the location of the postulated HELB and the single active failure taken. The HPCI system can be used to maintain RPV water level and depressurize the RPV, so that the low pressure high flow pumps (RHR or CS) can be used. Table I.4-1 identifies the systems available to support each shutdown performance goal.

For any postulated HELB with HPCI available, RCIC is not required, since HPCI could perform the same function. For any postulated HELB with HPCI not available due to a single active failure or HELB related damage, the unit is shut down using the SRVs (RPV depressurization), Core Spray (RPV water level maintenance), and RHR (decay heat removal and RPV water level maintenance). No single active failure could affect more than 1 SRV, 1 CS division, or 1 RHR division.

The RCIC System is not required for any postulated HELB in any of the identified compartments. However, for most postulated HELBs RCIC is available to support safe shutdown.

For any postulated HELB, at least one division of ESW is available to provide cooling to one division of RHR and CS systems. Hence, safe shutdown can be accomplished for any postulated HELB without requiring the RCIC System to support the safe shutdown.

01196839

01196839

I.4.3 Safe Shutdown System Component Locations

For each of the systems identified in Section I.4.1 of this report, the locations of the major components, main pipe routings, and power and control cable routings are listed in this section. The information is provided by system and HELB analysis volume for reference.

I.4.3.1 Reactor Protection System

The Reactor Protection System (RPS) consists of the motor generator set power supplies, the RPS power distribution panels, sensors and cabling. The two motor-generator sets are located in the Reactor Building on the 935-foot elevation in Volumes 14 and 17. The RPS power distribution panels are located in the Cable Spreading Room. There are sensors (i.e., high reactor pressure, etc.) included in the protection system that are located in a variety of sites throughout the plant.

I.4.3.2 Control Rod Drive System

The Control Rod Drive System consists of the control rods and the associated control rod drive hydraulic units. The electrical signals to the scram valves on the control rod drive hydraulic units are provided by the RPS. The control rods and Control Rod Drives are located inside of the Primary Containment. The control rod drive hydraulic units are located in two separate banks on either side of the Primary Containment on the 935 foot elevation of the Reactor Building in Volumes 14 and 18.

I.4.3.3 High Pressure Coolant Injection (HPCI) System

The HPCI System consists of a pump with a steam driven turbine and associated valving. It is located primarily in the HPCI room (Volume 8). The HPCI steam supply line and the HPCI injection line (PS18-8"-ED and TW3-12"-ED, respectively) are routed from main the steam chase (Volume 16) to the HPCI room (Volume 8). The valving for the HPCI System is located in the above identified compartments. Power cabling for the HPCI System is routed from the batteries in the EFT Building into the Turbine Building in the east corridor on the 931-foot elevation (Volume 20). The cables are then routed into the condenser bay (Volume 15), from there into the CRD pump room (Volume 7), down to equipment and floor drain tank area (Volume 6), and finally into the HPCI Room (Volume 8).

I.4.3.4 Reactor Pressure Relief System

The eight SRVs and associated piping are located inside of the Primary Containment on the main steam lines. There are four control panels and two instrument racks associated with the SRVs. The SRV control panel is located in the Cable Spreading Room. The SRV Low-Low Set control panel "A" is located in the cable spreading area. The "B" control panels are located in the main control room and on the third floor of the EFT Building. The SRV low-low set instrument rack "A" is located in the northeast corner of the torus area (Volume 9) and the "B" rack is located on the 935-foot elevation of the Reactor Building near the west side CRD hydraulic units (Volume 18).

I.4.3.5 Residual Heat Removal (RHR) System

The RHR System is a two divisional system with two motor driven pumps in each division. The valving for the system consists of a series of suction and discharge valves, which allow the RHR System to be operated in various modes. Two of the RHR pumps are located in the southeast corner room of the Reactor Building (Volume 1) and the other two in the southwest corner room of the Reactor Building (Volume 3). The suction valving is located in three separate compartments. Most of the RHR pump discharge valves are also located in the corner rooms with the following exceptions:

- (1) Division I suppression pool cooling (SPC) valves (MO-2006 and MO-2008) and the Division II SPC valve (MO-2009) are located in the torus area (Volume 9-12).
- (2) Division II SPC mode outboard valve (MO-2007) is located on the west side of Reactor Building, at the 935-foot elevation in Volume 19.
- (3) The Division I LPCI injection and SDC containment isolation valves (MO-2014 and MO-2012) and the shutdown cooling line outboard isolation valve (MO-2030) are located in Volume 13 on the 935-foot elevation of the Reactor Building.
- (4) The Division II LPCI Injection and SDC containment isolation valves (MO-2013 and MO-2015) are located in Volume 20 on the 935-foot elevation of the Reactor Building.
- (5) The Division I containment spray isolation valves (MO-2020 and MO-2022) are located in Volume 14 on the 948-foot elevation of the Reactor Building and the Division II valves (MO-2021 and MO-2023) are located on the 962-foot 6-inch elevation in Volumes 31 and 33.

The power cabling for the RHR Pumps is routed from the respective safety-related switchgear room in the Turbine Building Volume 8 (Division I) and Volume 31 (Division II) underground to the Reactor Building. Division I cables are then routed to RCIC room (Volume 5) and continue underground to the southeast corner room (Volume 1). The Division II cables are routed underground to the Reactor Building drain tank room (Volume 6) and then continue underground to the southwest corner room (Volume 3). The power cables to the valves are routed from the respective MCCs in the Turbine Building Volume 1 (Division I) and Volume 20 (Division II), to the Cable Spreading Room, and into the Reactor Building via Volume 14 (Division I) and Volume 17 (Division II). From there the cables are routed to the respective valves. The control cables follow the routing of the valves' power cables. The power and control cables for Division II RHR valves MO-2007, MO-2009, and MO-2003 are routed from MCCs (Volume 24) to the third floor EFT Building. They then go underground around the south side of the Reactor Building to the 935-foot elevation (Volume 18) of the Reactor Building and then to the respective valves.

I.4.3.6 Core Spray (CS) System

The Core Spray System is a two divisional system capable of taking suppression pool water and spraying it over the top of the reactor core. Each division has a core spray pump, a valve on the suction line to the suppression chamber, and inboard and outboard injection valves.

The Division I pump (P-208A) is located in the southeast corner room of the Reactor Building (Volume 1) in the same room with the Division I RHR pumps. Its suction line, (TW6-12"-HE) is routed from the suppression chamber area (Volume 10) to the CS pump. The pool suction valve (MO-1741) is located in the southeast corner room (Volume 1) with the CS pump. The discharge piping is routed from the southeast corner room, up through the east side of the 935-foot elevation of the Reactor Building (Volume 14) and finally up to the 962-foot 6-inch elevation of the Reactor Building on the east side (Volume 22). The inboard and outboard injection valves (MO-1753 and MO-1751, respectively) are located in this area (Volume 22).

The Division II Core Spray System is located on the west side of the Reactor Building. The Division II core spray pump (P-208B) and the pool suction valve (MO-1742) are located in the southwest corner room (Volume 3). The CS pump suction piping is routed from the suppression chamber area (Volume 11) to the southwest corner room. The pump discharge piping is routed from the southwest corner room up through the 935-foot elevation of the Reactor Building (Volume 19), and up to the 962-foot 6-inch elevation of the Reactor Building (Volume 31). The inboard and outboard injection valves (MO-1754 and MO-1752, respectively) are located on the west side of the Reactor Building at the 962-foot 6-inch elevation in Volume 31.

The cabling for each division of the Core Spray System follows the same routing as the corresponding division of RHR.

I.4.3.7 RHR Service Water System

The RHR Service Water (RHRSW) System supplies water from the ultimate heat sink (river) to the tube side of the RHR heat exchangers and back to the river. The system has 4 pumps with 2 dedicated to each division. The pumps for both divisions are located in the Intake Structure pump room (Volume 18). The discharge piping is routed from the Intake Structure (Volume 18) through the access tunnel (Volume 16) into the Turbine Building north corridor (Volume 5). From the Turbine Building north corridor they are routed above the 931-foot elevation of the Turbine Building through Volumes 20 and 25, and into the condenser bay area (Volume 15). The lines exit the Turbine Building from the condenser bay and penetrate the Reactor Building in the TIP drive room, Volume 17. From the TIP drive room, the lines are routed to the torus area (Volumes 9-12) and then to the respective corner rooms.

Auxiliary air compressors are located on the 935-foot elevation of the Reactor Building, Division I in Volume 14 and Division II in Volume 19. Each divisions' heat exchanger discharge pressure control valves (CV-1728 and CV-1729) are also located in the respective corner rooms.

Cabling for the system is routed entirely within the Turbine Building. The power cabling for the pumps is routed from the respective switchgear areas (Volumes 8, and 31) to the Intake Structure (Volume 18). Control cabling is routed to the Control Room via the respective divisional routing in the Turbine Building. For Division I this would be from the cable spreading room to Volumes 21, 2, 22 and 27. For Division II this would be from the cable spreading room to Volume 20 and then into the switchgear area.

I.4.3.8 Reactor Core Isolation Cooling (RCIC) System

While not required for safe shutdown, the RCIC System may be used if available. A description is included in this section for completeness.

The RCIC System, like the HPCI System, consists of a steam driven turbine–pump assembly and associated valving. The turbine–pump and most of the associated valves are located in RCIC room (Volume 5). The steam supply line (PS17–3.–ED) and the RCIC injection line (FW5–4.–ED) are routed from the RCIC room through the torus area (Volume 9) and up into main steam chase (Volume 16). The valving for the RCIC System is located in either the RCIC room or main steam chase. The RCIC power cables are routed from the batteries in the Plant Administration Building through the Cable Spreading Room into TIP drive room (Volume 17) in the Reactor Building and down to the RCIC room (Volume 5).

01196839

01196839

I.4.3.9 Shutdown Instrumentation

The Shutdown Instrumentation, like the other safety related equipment is divisionalized. The locations for the components for each division are given below:

| Division | Parameter Measured | Equipment Designation | Compartment |
|-----------------|------------------------------|------------------------------|--|
| I | Reactor Water Level | LT-2-3-112A | East side of Reactor Bldg. Elev. 935-foot |
| I | Suppression Pool Level | LT-7338A | Torus Area |
| I | Reactor Pressure | PT-6-53A | East side of Reactor Bldg. Elev. 962-foot 6-inch |
| I | Suppression Pool Temperature | TE-4073A to 4080A | Torus Area |
| II | Reactor Water Level | LT-2-3-112B | West side of Reactor Bldg. Elev. 935-foot |
| II | Suppression Pool Level | LT-7338B | Torus Area |
| II | Reactor Pressure | PT-6-53B | West side of Reactor Bldg. Elev. 962-foot 6-inch |
| II | Suppression Pool Temperature | TE-4073B to 4080B | Torus Area |

The cabling from these instruments is routed through the same routing schemes back to the cable spreading area as are the other safety-related divisional separated cables. The only exceptions are the Division II suppression pool temperature cables and Alternate Shutdown System (ASDS) instruments. From the torus area they are routed into the condenser bay (Volume 15) and through Volume 20 on the 931-foot elevation of the Turbine Building and into the Emergency Filtration Building from there. ASDS instruments that have been rerouted are reactor water level LT-2-3-112B and suppression pool level LT-7338B. The routing is underground around the south side of the Reactor Building to the third floor, EFT.

I.4.3.10 Emergency Service Water Systems

The two emergency service water systems, consisting of the Emergency Diesel Generator Emergency Service Water (EDG-ESW) System and the Emergency Filtration Train Emergency Service Water (EFT-ESW) System, are both two divisional systems which collectively supply cooling water to the emergency diesel generators, the ECCS pump room coolers, the RHR & Core Spray pumps, and the EFT System. The systems, when combined, consist of 4 pumps, P-111A, B, C & D, located in the Intake Structure (Volume 18). Pumps P-111A and P-111C are both Division I components, and pumps P-111B and P-111D are both Division II components.

I.4.3.10.1 Emergency Diesel Generator Emergency Service Water System

Pump P-111A and P-111B are used to supply cooling water to the Division I and Division II emergency diesel generator, respectively. The discharge piping from each EDG-ESW pump tees in the intake structure with separate 4 inch lines routed underground to the respective EDG. The other branch of the tee on each line has a closed manual valve in the Intake Structure (ESW-61-1 and ESW-61-2). The cooling water lines to the EDGs are cross-tied in the Intake Structure. This allows cooling of either EDG from pump P-111A or P-111B.

The power cable for Division I ESW pump P-111A is routed from MCC-134 in the EFT Building, into the main feedpump area, (Volume 3), along the east corridor at the 911-foot elevation (Volume 3), along the north Turbine Building corridor (Volume 5), through the access tunnel (Volume 16), and into the intake structure. A control cable for P-111A is routed from the Control Room, through the Cable Spreading Room, through Volume 21, into the main feedpump area (Volume 3) and into the EFT Building. Another control cable for P-111A is routed from C-03 in the Control Room, through the Cable Spreading Room, through Volume 21, into the main feedpump area (Volume 3), along the east corridor at the 911-foot elevation, along the north Turbine Building corridor (Volume 5), and into the Division I essential switchgear area (Volume 8) before entering the Division I EDG compartment (Volume 29).

The power cable for Division II ESW pump P-111B is routed from MCC-143 located in the southeast corner of the Turbine Building on elevation 931-foot (Volume 20), along the east corridor of the Turbine Building (Volume 20), along the north Turbine Building corridor (Volume 26), and into the Division II essential switchgear area (Volume 31) before entering the Intake Structure through an underground duct bank. The control cables for P-111B originate in the EFT Building and are routed into the Turbine Building, southeast corner, at elevation 931-foot. From there, one of the control cables is routed directly into the Control Room, one is routed to MCC-143 (which is located in Volume 20), and one is routed along the east Turbine Building corridor at the 931-foot elevation (Volume 20), along the north Turbine Building corridor (Volume 26), and into the Division II essential switchgear area (Volume 31) before entering the Division II Emergency Diesel Generator compartment (Volume 30).

I.4.3.10.2 Emergency Filtration Train Emergency Service Water System

Pumps P-111C & D supply cooling water to the respective Division I and II ECCS pump room coolers, the RHR and Core Spray pumps, and the EFT System. The Division I ESW Line to ECCS room coolers and Division I RHR and Core Spray Pumps (ESW1-3"-HF) is routed from the Intake Structure, through the access tunnel (Volume 16), into the Turbine Building north corridor on the 911-foot elevation (Volume 5). From there, it is routed in the north corridor over into the reactor feed pump area (Volume 3). Within this compartment the lines tee again (Reference 18) with the piping line ESW1-3"-HBD routed into the Emergency Filtration Building. The line to the ECCS pump room coolers and RHR and Core Spray Pumps SW30A-3"-HF is routed from the main feed pump area into the condenser bay area (Volume 15) on the 911-foot elevation. The pipe is routed along the east wall over to the south wall of the room. The piping line exits the condenser bay through the south wall and into the Reactor Building. This line enters the Reactor Building in the TIP drive room (Volume 17) and is routed from there into the torus area (Volume 9). Once in the torus area the line tees again with part of the flow routed to the southeast corner room (Volume 1) and the remainder to the HPCI room (Volume 8) for the Division I HPCI room cooler.

The Division II ESW Line to the ECCS room coolers (ESW5-3"-HF) follows a parallel route to its Division I counterpart to the north turbine corridor at the 911-foot elevation (Volume 5). From there it is routed to Volume 20 on the 931-foot elevation of the Turbine Building. In Volume 20 the line tees (Reference 19) with line SW30B-3"-HF routed into Volume 21 and then into the condenser bay (Volume 15). From the condenser bay, the line enters the Reactor Building in the main steam chase (Volume 16) and from there is routed into the torus area (Volume 12). After entering the torus area, the line tees again with part of the flow going to the southwest corner room (Volume 3) and the remainder to the Division II HPCI room cooler in the HPCI room (Volume 8).

The cable for the other two ESW pumps (P-111C and P-111D) begins in the EFT Building. The power cable to P-111C is routed from MCC-134 in the EFT Building into the main feedpump area, Volume 3, along the east corridor at the 911-foot elevation, and then along the north Turbine Building corridor Volume 5 into the access tunnel. One control cable is located entirely in the EFT Building. The other enters the Turbine Building in the main feedpump area, then is routed into Volume 21 and into the Cable Spreading Room, before entering the Control Room. For pump P-111D, the power cable is routed from MCC-144 in the EFT Building into the Turbine Building southeast corner on the 931-foot elevation. It is then routed along the east corridor at that elevation into the Division II cable way (Volume 35), and ending in Division II essential switchgear area, Volume 31. From there the cable is routed outside underground to the Intake Structure. Three control cables for this pump are located entirely within the EFT Building and the other enters the Turbine Building at the 931-foot elevation in Volume 20. From there it is routed up to the turbine operating floor before entering the Control Room.

I.4.3.11 Emergency Diesel Generators and Auxiliaries

There is one Emergency Diesel Generator (EDG) for each essential division at Monticello. The EDGs are located in adjacent compartments with EDG-11 located in Volume 29 and EDG-12 located in Volume 30. The local control panels and air start systems are also located in the respective compartment with the EDG. The oil day tanks are located next to Volume 29 in separate day tank rooms. Cabling for power to the local control and electrical cabinets is routed in the same manner as the control cables for RHRSW pumps. The EDG power cabling is routed to the respective essential switchgear which are in adjacent compartments in the Turbine Building.

I.4.3.12 Auxiliary Power Distribution Systems

The Auxiliary Power Distribution System consists of the 4KV switchgear, the 480Vac load center, motor control centers and the transformers between them. The system is capable of distributing the electrical power generated by the EDGs under a loss of off-site power condition. For Division I, both the 4KV switchgear and 480Vac distribution equipment are located in Volume 8 on the 911-foot elevation of the Turbine Building in the northwest corner. The Division II load centers are located directly above the Division I load centers on the next floor (931-foot elevation) in Volume 31. Essential MCCs - 133A, 142A and 143A are located in the southeast corner of the Turbine Building with Division I MCC-133A located on the 911-foot elevation in Volume 1 and Division II MCCs - 142A and 143A located on the 931-foot elevation in Volume 20. Essential MCCs - 134 and 144 are located in the EFT. The EFT is not assigned a volume number because there are no high energy lines within the building.

Cabling from load centers to the MCCs is routed in separate compartments. Cables from Division I load centers are routed from Volume 8 through Volumes 35 and 26 terminating in Volume 20. Other Division I cables not terminating at the MCC are routed up into Volume 21 and into the cable spreading area. The Division II cables are routed from the load centers Volume 31 through Volumes 32, 35 and 26 and terminating in Volume 20. Cables going to the cable spreading area are routed through Volume 20.

I.4.3.13 DC Power Systems

With the exception of the 125 Vdc distribution panels located in the 4 KV switchgear rooms, the major DC power components required for safe shutdown are located in the battery rooms of the Administration or Emergency Filtration Buildings. The cabling is routed from Cable Spreading Room to the respective components along the divisional routings described previously. The only exception is the HPCI power cables, which are routed in a similar route to the Division II SPOTMOS cables. However, once routed into the Reactor Building, the HPCI cables are then routed to the HPCI area (Volume 8).

I.4.3.14 HVAC Systems

The only HVAC Equipment required for safe shutdown are the ECCS Room Coolers, V-AC-5 (Division I) and V-AC-4 (Division II), located in respective Reactor Building corner rooms on the 920-foot elevation and the EDG supply fan, V-SF-9 for EDG No. 12 and V-SF-10 for EDG No. 11. The cooling water for the ECCS room coolers is supplied from the respective Emergency Service Water System pump with V-AC-5 supplied by P-111C, and V-AC-4 by P-111D. Power cabling for the V-AC-4 and V-AC-5 is routed into the Reactor Building from the cable spreading area in the same manner as the other divisional cables.

The power and control cables for Division I EDG supply fan (V-SF-10) are routed from MCC-134 in the EFT Building, into the main feedpump area, (Volume 2), along the east corridor at the 911-foot elevation (Volume 3), along the north Turbine Building corridor (Volume 27) and into Division I switchgear area (Volume 7) before entering the Division I EDG compartment (Volume 29).

The power and control cables for Division II EDG supply fan (V-SF-9) are routed from MCC-143 located in the southeast corner of the Turbine Building at the 931-foot elevation, along the east corridor of the Turbine Building at the 931-foot elevation, along the north Turbine Building corridor, and into the Division II essential switchgear area (Volume 31) before entering the Division II EDG compartment (Volume 30).

Table I.4-1 Safe Shutdown Components Available

| SAFE SHUTDOWN COMPONENTS AVAILABLE FOR EACH PERFORMANCE GOAL ⁽¹⁾ | | | | |
|---|---|--|---|---|
| Division | Equipment Required to Achieve and Maintain Subcriticality | Equipment Required to Maintain RPV Inventory ⁽⁴⁾ | Equipment Required for RPV Depressurization | Equipment Required to Remove Decay Heat |
| I | Reactor Protection System and Control Rods and Control Rod Drives | 1 CS Pump and 2 RHR Pumps Available ⁽⁵⁾ <ul style="list-style-type: none"> 1 CS Pump or 1 RHR Pump (LPCI Mode) ⁽²⁾ | 4 SRVs Available ⁽⁵⁾ <ul style="list-style-type: none"> 2 SRVs Needed for LPCI RPV Inventory Recovery or; 2 SRVs Needed for CS Pump RPV Inventory Recovery | 4 SRVs, 2 RHR Pumps, 1 CS Pump, 1 RHR Heat Exchanger, and 2 RHRSW Pumps Available <ul style="list-style-type: none"> 1 RHR Pump (SDC Mode), 1 RHR Heat Exchanger, and 1 RHRSW Pump Needed or; 1 CS Pump, 1 SRV, 1 RHR Pump (SPC Mode), 1 RHR Heat Exchanger, and 1 RHRSW Pump Needed 1 RHR Pump (LPCI Mode), 1 RHR Heat Exchanger, 1 SRV, and 1 RHRSW Pump Needed |
| II | Reactor Protection System and Control Rods and Control Rod Drives | HPCI, 1 CS Pump, and 2 RHR Pumps Available <ul style="list-style-type: none"> HPCI, 1 CS Pump or RHR Pump (LPCI Mode) Needed or; 1 CS Pump or 1 RHR Pump (LPCI Mode) ⁽³⁾ | HPCI and 4 SRVs Available <ul style="list-style-type: none"> HPCI and 1 SRV Needed or; 2 SRVs Needed for LPCI RPV Inventory Recovery or; 2 SRVs Needed for CS Pump RPV Inventory Recovery | 4 SRVs, 2 RHR Pump, 1 CS Pump, 1 RHR Heat Exchanger, and 2 RHRSW Pumps Available <ul style="list-style-type: none"> 1 RHR Pump (SDC Mode), RHR Heat Exchanger, and 1 RHRSW Pump Needed or; 1 CS Pump, 1 SRV, 1 RHR Pump (SPC Mode), 1 RHR Heat Exchanger, and 1 RHRSW Pump Needed 1 RHR Pump, 1 SRV, 1 RHR Heat Exchanger, and 1 RHRSW Pump Needed |

- ¹ Required Auxiliary Support Systems (i.e., EDG, EDG Auxiliaries, Essential Power Dist. Sys., ESW System, Shutdown Instrumentation) always required.
- ² Following RPV depressurization by SRVs and RCIC not available.
- ³ Following RPV depressurization by SRVs and HPCI not available.
- ⁴ RHR pump used for RPV Inventory Control cannot be same RHR pump used for Decay Heat Removal, except for the final path described for either division under decay heat removal of this table.
- ⁵ Though not required safe shutdown equipment, RCIC if available, could be used.

**APPENDIX I *EVALUATION OF HIGH ENERGY LINE
BREAKS OUTSIDE CONTAINMENT*****I.5 HELB and Safe Shutdown Evaluation****I.5.1 Compliance Evaluation (Reference 58)**

The objective of the compliance evaluation was to establish that, for any postulated HELB in any compartment, a path to safe shutdown existed coincident with a loss of off-site power and a single active failure. The methodology for showing this compliance was divided into four steps:

- (1) Eliminate all compartments which did not contain both postulated HELBs and SSD equipment, or all compartments containing postulated HELBs which would not adversely affect SSD in adjacent compartments.
- (2) Evaluate the loss of all SSD equipment from a postulated HELB in a specific compartment. If a path to safe shutdown exists, the evaluation of the compartment is complete and documented accordingly.
- (3) Evaluate the loss of the SSD equipment affected by specific HELBs in a compartment to demonstrate compliance.
- (4) Provide recommendations for proposed modifications to achieve compliance for specific postulated HELBs.

Step 1 was performed using the data obtained from the field surveys (References 15 and 16) and the HELB locations were identified. A review of all compartments was made to determine those compartments in which only SSD equipment or high energy lines were located. These compartments were identified as being in compliance. In addition, for the compartments containing only high energy lines, a review was performed to determine if any postulated HELBs could cause adverse effects on SSD equipment in adjoining compartments. If an interaction, due to the effects of a HELB, could be identified, an evaluation using the methods of Step 3 was performed.

Step 2 in the compliance evaluation was to evaluate the loss of all SSD equipment in a given compartment as a result of a HELB and evaluate whether a path to safe shutdown existed. This safe shutdown path was then applied to all postulated HELBs in the compartment.

As necessary, a differentiation was made between Cracks and Breaks for equipment needed for safe shut down as follows:

- Breaks are generally assumed to directly result in Automatic Reactor Protective Action. Where Automatic Reactor Protective Action is the direct result, the break itself **SHALL NOT** take out redundant equipment needed for shutdown. For example, a main steam line break in the steam chase room is sensed by the main steam line flow elements which causes the Main Steam Isolation Valves to close, a Group 1 Isolation. This example is a direct Automatic Reactor Protective Action and means the main steam line break in the steam chase room **SHALL NOT** disable redundant equipment needed for shutdown. Continuing with this same example, if the break caused an out board MSIV not to close and its redundant inboard MSIV does not close because of single active failure, then a shutdown path does not exist.
- Cracks are generally assumed to not result in direct Automatic Reactor Protective Action. If direct Automatic Reactor Protective Action does not result, then a loss of redundant equipment is allowable. For example, a condensate feedwater crack in the condenser room may cause the condenser room fire sprinklers to initiate which will eventually shut down the condenser circulating water pumps due to high water level in the condenser room. This in turn will cause the condenser to lose vacuum which will cause a turbine trip and vessel scram. This example does not directly cause Automatic Reactor Protective Action which is the turbine trip and vessel scram. Continuing with this example, if the lower 4 kv room exceeds the manufacturers environmental temperature limit, then it is loss of redundant shutdown equipment. However, the upper 4 kv room equipment is available for shutdown since a single failure is not required to be assumed.
- Where the HELB takes out redundant shutdown equipment, analysis exists to show the HELB will not directly result in Automatic Reactor Protective Action by showing applicable Reactor Protective limits are not exceeded. The analysis addresses at least one of the following five HELB resultant parameters that may take out redundant shutdown equipment; pipe whip, jet impingement, room area pressure, room area temperature, and room area flooding.

For any compartment in which compliance could not be demonstrated, an evaluation of specific HELBs was conducted (Step 3) to determine the SSD equipment adversely affected by a break and potential pathways to safe shutdown. Again compliance could be demonstrated by establishing a safe shutdown path. Any unacceptable interactions remaining were identified and changes to plant configuration and operating requirements were made to remove these interactions.

I.5.1.1 Identification of Potential Targets

The targets of the postulated HELBs were selected as those systems, components, and structures required to mitigate the consequences of postulated HELBs and accomplish and maintain a cold shutdown condition without fuel damage or break of primary containment as identified in the USAR, the Safe Shutdown Analysis (Reference 5), and the original HELB Report (Reference 1).

Targets include floors, walls, compartment boundaries, and other systems where failures of the boundary or system in a postulated HELB could cause damage or create adverse conditions for primary safe shutdown equipment.

The primary and secondary containment boundaries and the Control Room are also considered to be targets of postulated HELBs.

I.5.1.2 Single Active Failure Evaluation

For each compartment containing high energy lines, where safe shutdown equipment was adversely affected, a single active failure review was conducted to determine the single active failures that could inhibit safe shutdown of the unit. Determination of the component(s) subject to single active failure was based upon the definition provided in Appendix A of BTP ASB 3-1 (Reference 3 and Section I.3.2 of Reference 7). A single active failure is defined as the malfunction or loss of function of an electrical or fluid system component, excluding passive failures, which rely on mechanical movement to complete its intended function upon demand.

The determination of postulated targets and disabled systems revealed that for all HELBs within the plant, the SRVs and the RPS equipment would not be adversely affected. Also, there are no single active failures within these systems coincident with loss of off-site power which could prevent these systems from performing their intended safe shutdown function. Therefore, the reactivity control and reactor vessel depressurization function could always be achieved.

The reactor vessel level control function is achieved by using either the HPCI or RCIC systems before RPV depressurization and by using one division of the Core Spray or the LPCI mode of RHR after RPV depressurization. If neither HPCI nor RCIC is affected by a HELB, then either system can achieve the level control function, assuming a single active failure in either system. If both HPCI and RCIC are lost through a HELB or HELB and single active failure, the RPV can be depressurized with the SRVs and either the LPCI mode of RHR or CS can be used to restore and maintain RPV level. The LPCI and CS are redundant to each other, and each essential division has a CS and LPCI System. There are no single active failures in the CS, HPCI, RCIC and LPCI Mode of RHR which prevents the reactor vessel level function from being achieved.

Although not credited in the HELB analysis, some decay heat removal is achieved by the HPCI System prior to RPV depressurization as it functions to control vessel level and pressure. After depressurization, the decay heat removal function is achieved by the Shutdown Cooling Mode (SDC) of RHR or the CS, SRVs and Suppression Pool Cooling (SPC) mode of RHR. If the HPCI system is not available as the result of a HELB or a single active failure, the RPV can be depressurized by using the SRVs, and decay heat removal established by the SDC mode of RHR or the CS, SRVs, and SPC mode of RHR. Each essential division contains a CS and RHR system. Therefore, these systems provide redundancy for the decay heat removal safe shutdown function on a systems basis. In addition, each RHR loop is equipped with 2 pumps (only 1 of which is required for Suppression Pool Cooling (SPC) or SDC mode) and locked open pump suction valves.

The valves required for the SPC mode and the SDC mode are different, so no single failure of any one valve could prevent the other mode from operation. This includes the suction valves to the suppression chamber and the SDC connection on the recirculation line, which are electrically interlocked. There is a RHR heat exchanger bypass valve in each RHR division which is common to the associated SPC and SDC cooling modes. Cooling would be available from the other division if the single active failure is this bypass valve. Therefore, ECCS division redundancy assures that the decay heat removal function is available even with a single active failure.

For the LPCI mode of RHR the LPCI System injection valve power sources, MCC-133B and MCC-143B, have been hard wired together to provide swing bus capabilities for both divisions of LPCI. For a single active failure on either LPCI System, the alternate LPCI System could be used as well as either division of Core Spray. Most important for a postulated HELB event, which adversely affects Division I safety-related electrical power, only the Division II Core Spray System would remain available. Should the single active failure be postulated on Division II Core Spray, Division II LPCI can be re-established by removing a bus link between MCC-133B and MCC-143B. This would allow Load Center 104 (Division II) via MCC-143B to power LPCI Division II valves and thus allow Division II LPCI to be available. With this arrangement the decay heat removal function is assured.

In addition to these systems, the RHR Service Water System is required to remove decay heat from the RHR System and transfer the heat to the river. Each RHR Service Water System loop is equipped with dual pumps, so a single active failure of either pump does not affect the ability of the identified loop to function. The only non-redundant active component in either loop is the control valve which regulates RHR service water pressure. If this valve is the single active failure, sufficient time exists to manually open the valve or force the valve. In this instance for the HELBs postulated, both essential power systems or either HPCI and RCIC are not affected. In either case, heat rejection to the river would not be required for several hours, which would be sufficient time to switch to the other essential division or open the affected valve.

The function of the Emergency Service Water (ESW) System is to provide cooling to the Emergency Diesel Generators, the core spray and RHR pump motors, and the ECCS pump room cooling units. The only components on this system subject to a single active failure are the four pumps (P-111A, B, C, and D). If either pump P-111A or B fails, cooling water to one EDG is available. Should the single active failure be either of the other ESW Pumps (P-111C or D), the remaining pump can provide cooling water to its equipment.

The remainder of the auxiliary systems (i.e., EDG auxiliary systems, DC power systems, and HVAC) can perform their function assuming a single active failure. The EDG auxiliaries include the air start system, cooling system, the oil transfer system, and the electrical control system. The active components on the air start system have redundant systems. The cooling system has no active components except for the ESW pump, which was discussed previously. The oil day tank/base tank combination for the diesel generator contains enough fuel for the diesel to run for at least 8 hours. The electrical control power for the diesel generators is taken from the DC power system. The only active components on this system are the breakers at the safety-related electrical MCCs. A single failure of one of these breakers would not prevent the functionality of the DC power system. Similarly, for the entire 250 and 125 Vdc power systems the only active components are the breakers. No single active failure can prevent the system from functioning, and no components other than the breakers on MCCs 133 and 143 are subject to HELBs.

The only instrumentation required for safe shutdown, which is affected by HELBs, are the Suppression Pool Temperature Monitoring System (SPOTMOS) cables for Division II. Therefore, should the single active failure be the Division I microprocessor of the SPOTMOS, suppression pool temperature could still be determined by measuring the electrical resistance across the RTD leads of the Division I SPOTMOS. This can be done at the Division I SPOTMOS panel in the Emergency Filtration Building. For any other HELB, neither division of the SPOTMOS is affected.

The remaining system required is the safety-related power system consisting of the two diesel generators, 4 KV switchgear, 480 Vac load centers and the essential 480 Vac MCCs. The worst case active failures are the diesel generators and their respective EDG breaker to each 4 KV bus. The failure of other switchgear and breakers on the power distribution system is bounded by the failure of the EDG breaker.

For the single active failure of one of the diesels, the other diesel alone can supply enough power to its division for unit shutdown. If the other division's equipment had been damaged by a postulated HELB to the extent that a path to safe shutdown could not be provided, an operating procedure exists, which allows the diesel generator to be realigned to the other division. This will supply power to that division and it will receive all necessary auxiliary support using only the equipment of the opposite division. In this way, either diesel generator could supply either division with power, mitigate the effects of postulated HELBs, and safely shutdown the unit.

For the postulated HELBs, it can be concluded here that there are no coincident single active failures which would prevent safe shutdown of the unit.

I.5.2 HELB Evaluations by System

Table I.5-1 identifies by compartment and system the locations of high energy piping subject to possible pipe rupture. By reading any row, a determination can be made of all compartments in which pipe ruptures of a specific system are postulated. Also, by examining any column, a determination can be made if any postulated high energy line breaks are located within a specific compartment. The last line of the table identifies those compartments which contain safe shutdown equipment.

The following section evaluates the effects of a postulated HELB on safe shutdown in each compartment identified in Table I.5-1 that has a postulated break location or has high energy piping traversing the compartment. There are no high energy lines in the EFT building. The evaluations are conducted on a system basis for each compartment. A coincident loss of off-site power and single active failure are assumed.

Evaluations are provided for each high energy system with high energy piping that could not be excluded from further evaluation based upon the 2% criterion or the 1 inch nominal pipe size criterion. For each system, an evaluation is provided for each compartment in which HELBs are postulated. The evaluations describe the effects of pipe whip, jet impingement, compartment pressurization, flooding, and environmental effects. Information on paths to safe shutdown is given, if the postulated HELBs damage SSD equipment.

I.5.2.1 Main Steam System

The high energy lines for the Main Steam System are located in four compartments, the main steam chase (Volume 16) in the Reactor Building, the condenser area (Volume 15), the steam jet air ejector (SJAЕ) room (Volume 14), and the turbine operating floor (Volume 37) in the Turbine Building.

I.5.2.1.1 Main Steam Chase (Volume 16)

The main steam chase contains the four main steam lines and the associated drain piping. Pipe whip from the main steam lines is not considered a problem, since these lines are restrained at several locations in this compartment and pipe whip reactions are not toward any SSD equipment. Since the only postulated break locations are at the outboard containment isolation valves and the penetration acts as an anchor point, only circumferential breaks are required to be postulated. The resultant jets from the circumferential breaks do not impact any SSD equipment except for a small portion of the jet which would hit the compartment ceiling. Imbedded in the ceiling are Division II cables of SSD equipment, but these cables would be unaffected because of the concrete ceiling reinforcement below the conduits. HPCI and RCIC would both be available to support safe shutdown, since the steamline isolation valves and injection valves are qualified for the anticipated steam environment. In addition, all other SSD systems of both divisions would be available. Depressurization is accomplished by the HPCI or the SRVs, and LPCI and CS can be used for decay heat removal and RPV level maintenance. Therefore, safe shutdown can be accomplished.

The postulated main steam line break would rupture the blowout panels to the turbine operating floor (Volume 37), and fail open the railway door to the south side of the Reactor Building at elevation 935-foot. The effects of the pressurization would be from the same circumferential break, and the identical SSD equipment would be affected. No additional SSD equipment would be adversely affected as a result of the pressurization. Therefore, safe shutdown could be accomplished in the same manner as described above.

The consequences of compartment flooding was evaluated and no additional SSD equipment would be affected. The HPCI and RCIC injection valves would remain available due to the height of the operators above the floor (~ 5 ft.). Water would not leave the area since the bottom of the door opening is 4 feet above the compartment floor elevation.

The effects of the main steam line break in this compartment were used for environmental qualification purposes. Therefore, no additional SSD equipment will be adversely affected, and the previously identified path to safe shutdown can be utilized.

Breaks on the main steam drain line (PS15-3"-EB) were evaluated, and found to be bounded by the other main steam line break evaluations.

It is, therefore, concluded that a path to safe shutdown exists for any postulated main steam break in the main steam chase.

I.5.2.1.2 SJAE Room (Volume 14)

The main steam piping line (PS9-3"-ED) is routed to the SJAE Room from the Condenser area. No concern exists with respect to pipe whip and jet impingement, since there is no SSD equipment in the area. The consequences of compartment flooding was evaluated. Since there is no SSD equipment in the room, there was no negative effect. Also, the drains in the room can drain the entire volume to the sump area. In addition, the door to the SJAE room is barred and air tight. Any leakage as a result of the flooding would be negligible.

Compartment pressurization and environmental effects from this steamline break would not adversely affect any SSD equipment. The SJAE hatch plug has been modified and the SJAE has adequate vent areas to the Condenser bay (Volume 15) and to the 931-foot elevation of the Turbine Building. The door to the SJAE Room has also been modified to withstand the pressurization. The only SSD equipment that may be adversely affected is the switchgear in Volume 8. The pressure and temperature transient in the switchgear area does not increase to a point where the area is considered environmentally harsh, and are within the design conditions for the switchgear. Consequently, the SJAE room break does not adversely affect any SSD equipment and paths to safe shutdown exist.

I.5.2.1.3 Condenser Area (Volume 15)

The bulk of main steam piping is within the condenser area. A pipe whip of line PS4-18"-ED could damage RHR service water line SW9-18"-GF. The most critical break would be in the steam bypass line PS7-10"-ED. A whip from this line could damage power cables to the HPCI System, and cables of one division of the Suppression Pool Temperature Monitoring System (SPOTMOS). The pipe whip effects of the other main steam piping within this compartment could cause additional flooding but would not cause any damage to safe shutdown equipment.

For jet impingement, the worst case event would be a longitudinal break in the bypass steam line (PS7-10"-ED), whose pipe reaction would damage the HPCI and SPOTMOS cables on the other side of the line. All other postulated main steam breaks would damage individual piping of safe shutdown systems, but loss of any one line would not result in loss of the safe shutdown capability. The reason for this is only one safety division would be affected, and safe shutdown can be achieved from the other safety division, assuming a single active failure.

For the break that damages the HPCI power cables and one division of SPOTMOS, a path to safe shutdown can still be achieved. Following the break, RPV water level can be maintained by RCIC and the pressure maintained by the SRVs. If the single active failure is in the RCIC system, the RPV can be depressurized with the SRVs and either the LPCI mode of RHR or CS can be used to restore and maintain RPV level. Hence, safe shutdown would be accomplished using the SRVs to depressurize the RPV and one division of CS/RHR for RPV water level control and decay heat removal.

The flooding that would result from the main steamline break would not affect any SSD equipment, as there are no SSD components in the bottom of the Condenser bay. Moreover, if all water condensing from the released steam were to remain in the Condenser bay, the flood water would not affect any other SSD equipment. This is because of two bay areas that are at a lower elevation with free volumes substantially larger than the volume of water generated by condensing the steam from a main steamline break.

Environmental effects are evaluated in the MNGP Environmental Qualification (EQ) program based on the break cases identified in this Appendix. Bounding profiles for environmental conditions are identified. The environmental conditions include compartment pressurization, heatup, and flooding effects. The doors to the Condenser bay have been modified to prevent their failure under a main steamline break. The analysis that was performed showed that with the vent area in the Condenser bay, the knock out blocks would not fail. The calculated temperatures and pressures in the switchgear area do not increase to a point where the area is considered environmentally harsh, and are within the design conditions for the switchgear. Consequently, no other SSD equipment is adversely affected other than the SSD equipment directly damaged by the pipe whip and jet impingement.

With the exception of the break on the turbine bypass line (PS7-10"-ED), which damages the HPCI power cabling, and one division of SPOTMOS, all other postulated HELBs on steam lines in the Condenser bay do not adversely affect more than one division of SSD equipment. The path to safe shutdown for the turbine bypass line break has been previously described, and all other breaks are less severe. A path to safe shutdown exists for all HELBs in the condenser area.

I.5.2.1.4 Turbine Operating Floor (Volume 37)

The only postulated HELBs in this compartment from the main steam system are breaks at the inlet to the High Pressure Turbine. A break at this location would not expose any SSD equipment to either pipe whip or jet impingement as there is no SSD equipment in this area. Environmental effects are evaluated in the MNGP Environmental Qualification (EQ) program based on the break cases identified in this Appendix. Bounding profiles for environmental conditions are identified. The environmental conditions include compartment pressurization, heatup and flooding effects. Any water condensing would drain either to the Condenser bay or lower elevations of the Turbine Building to areas where the water could be drained. The SSD equipment in these areas would not be adversely affected by the water produced. HELB barriers have been installed to prevent environmental effects from breaks on the turbine operating floor from affecting SSD equipment in the Div II 4KV and Div II Essential MCC areas (Volumes 31 and 20).

I.5.2.2 Feedwater System

The high energy lines for the Feedwater System are located in the feedwater pump area (Volumes 2 and 3), Turbine Building pipe chase (Volume 21), turbine operating floor (Volume 37), condenser area (Volume 15) in the Turbine Building and the main steam chase (Volume 16) in the Reactor Building.

The two feedwater lines and the feedwater regulating station piping were seismically analyzed. Break locations were selected based upon the seismic analysis of the piping and the break location criteria established for seismic Class I piping. There were no break locations in the Turbine Building pipe chase (Volume 21).

I.5.2.2.1 Reactor Feedwater Pump Area - Volumes 2 and 3

For postulated HELBs on feedwater piping in these volumes, the only pipe whip targets are MCC-133A and 133B, Division I cables, RCIC and the compartment ceiling. Loss of the MCC and the cables does not prevent safe shutdown, since the Division II equipment with HPCI could be used for safe shutdown. If the ceiling to this compartment is damaged, safety-related MCC-143 on the 931-foot elevation could be adversely affected, and a path to safe shutdown would not exist. To prevent damage to the ceiling from a feedwater line break, several pipe whip restraints have been added to the area. Therefore, a path to safe shutdown will exist. Also, to prevent Division II LPCI from being adversely affected by a HELB in this compartment, a mechanical bus tie link has been installed within MCC143B to isolate MCC-133B from MCC-143B. Even if Division II Core Spray is the single active failure, Division II LPCI control can be restored by removal of the bus tie link (Reference 24).

Flooding in this compartment is not a concern. The only SSD equipment possibly affected would be MCC 133, which would already be lost due to the other HELB effects. For the purpose of this evaluation, a HELB in the feedwater pump discharge line with no loss of offsite power was assumed. This results in the condensate and feedwater pumps remaining powered and releasing the maximum amount of high energy fluid. Additional flood water from two 2-inch service water lines and fire suppression system were also included in the analysis. No other SSD equipment would be affected, and most of the water would be contained in Volumes 1, 2, 3, 5, 6 and 7.

Environmental effects are evaluated in the MNGP Environmental Qualification (EQ) program based on the break cases identified in this Appendix. Bounding profiles for environmental conditions are identified. The environmental conditions include compartment pressurization, heatup, and flooding effects.

I.5.2.2.2 Turbine Building Pipe Chase (Volume 21)

There are no postulated feedwater line breaks within this compartment. Thus, pipe whip, jet impingement, flooding and compartment pressurization effects result from breaks in other areas (Volumes 3 and 15). Since there are no breaks in this Volume, only temperature and compartment pressurization create environmental concerns in Volume 21. Environmental effects are evaluated in the MNGP Environmental Qualification (EQ) program based on the break cases identified in this Appendix. Bounding profiles for environmental conditions are identified. The environmental conditions include compartment pressurization, heatup, and flooding effects.

I.5.2.2.3 Turbine Operating Floor (Volume 37)

Feedwater lines FW2A and FW2B have break locations at the terminal ends of the inlets and outlets to the Feedwater heaters in this area. The postulated HELBs have no pipe whip or jet impingement targets. The resultant flooding would drain back to the Condenser area (Volume 15) with the same areas flooded as a break in the Condenser area. The cascading water would not adversely affect any SSD equipment. The pressure, temperature, and humidity transients postulated as a result of pipe ruptures are evaluated.

No safe shutdown equipment is located on the turbine operating floor.

I.5.2.2.4 Main Steam Chase (Volume 16)

The only postulated break locations in this area consist of the terminal end at each outboard containment isolation valve (FW-94-1&2). For a break at the terminal point on line FW2A-14-ED at the FW-94-1 outboard weld, RCIC flow would be lost because the RCIC injection line (FW5-4"-ED) connects upstream of the postulated break. For feedwater line FW2B-14"-ED, a break at the terminal end at the FW-94-2 outboard weld would cause the loss of the HPCI System, because the HPCI injection point is upstream of the break. No safe shutdown equipment can be adversely affected by pipe whip or direct jet impingement from any pipe break of the Feedwater System in the Reactor Building steam chase. However, for conservatism, both HPCI and RCIC are assumed lost due to flooding (described below) and possible jet impingement due to compartment geometry.

Flooding in the Reactor Building steam chase, as a result of a feedwater line break, would cause the loss of both HPCI and RCIC, since the injection valves for these systems (MO-2068 and MO-2107) would be submerged above the motor operators at the peak HELB flood level. Water exiting the steam chase would flow along the floor of the Reactor Building 935-foot elevation. Some of the water would also flow down to the Control Rod Drive pump room (Volume 7) and into the Elev 896-foot tank and HPCI pump rooms. Additional safe shutdown equipment would not be affected by the water exiting the steam chase, because no SSD equipment required to mitigate this break is located in the affected areas. Therefore, the flooding from the postulated feedwater line break of either feedwater line would adversely affect only HPCI and RCIC. The path to safe shutdown would be the same as that described in Section I.5.2.1.1 with the exception that an RHR or CS pump would be required to maintain RPV level.

The main steam line break provides the bounding case in the steam chase for temperature and compartment pressurization. Flooding effects from the feedwater break remove RCIC/HPCI from the available safe shutdown equipment, however a safe shutdown path exists for both break cases.

In summary, a Feedwater Line break in the main steam chase (Volume 16) could adversely affect HPCI and RCIC. The emergency service water line, SW30B-3-HF, would not be adversely affected from a feedwater line break. Paths to safe shutdown would include using the SRVs to depressurize the RPV, using CS for RPV level maintenance and RHR for decay heat removal. No postulated single active failure prevents the other division from achieving safe shutdown.

I.5.2.2.5 Condenser Area (Volume 15)

For the postulated break locations in the Condenser area, pipe whip and jet impingement targets are identified that could cause additional flooding but would not cause damage to any SSD equipment. The flooding caused by a feedwater line break would be the same as the condensate line break, and the associated environmental conditions would be bounded by the main steam line break in the same compartment. The flooding, compartment pressurization, and environmental effects caused by a postulated condensate line break would adversely affect no SSD equipment. It can be concluded that paths to safe shutdown exist for postulated feedwater HELBs in this compartment. There are no intermediate breaks postulated in the Condenser area for the feedwater system.

I.5.2.3 Condensate System

The high energy Condensate System lines are located in the condenser area (Volume 15), Turbine Building pipe chase area (Volume 21), and feedwater pump area (Volumes 2 and 3) in the Turbine Building.

Break locations for portions of the condensate system piping were selected based upon a seismic analysis of the piping and break location criteria established for Class I piping.

I.5.2.3.1 Condenser Area (Volume 15)

For the postulated break locations in the Condenser bay, pipe whip and jet impingement targets are identified that could cause additional flooding. There is no SSD equipment that would be affected by flooding from the condensate break or the pipe whip and jet impingement effects in the condenser area. The resultant flood would fill the low pressure heater drain bay and the condenser pit. The remaining water would drain to the mechanical vacuum pump area, in which the sumps are located. The associated environmental conditions would be bounded by the main steam line break in the same compartment. The flooding, compartment pressurization, and environmental effects caused by a postulated condensate line break would adversely affect no SSD equipment. It can be concluded that paths to safe shutdown exist for postulated condensate HELBs in this compartment. There are no intermediate breaks postulated in the Condenser area for the condensate system.

I.5.2.3.2 Turbine Building Pipe Chase (Volume 21)

There are no postulated condensate line HELBs within this compartment.

I.5.2.3.3 Reactor Feedwater Pump Area (Volumes 2 and 3)

The postulated condensate line HELBs in these compartments would not affect any additional SSD equipment other than the SSD equipment described for a feedwater line break in the same compartment. The effects of pipe whip, jet impingement, flooding, compartment pressurization, and environmental effects are less adverse than for the feedwater line break. Therefore, the same evaluations, as provided in Section I.5.2.2.1 of this report, apply, and the same paths to safe shutdown can be used.

I.5.2.4 High Pressure Coolant Injection (Steam) System

The steam supply line (PS18-8"-ED) to the HPCI Turbine is located in the steam chase (Volume 16). The torus area (Volumes 9 and 12) and HPCI compartment area (Volume 8).

I.5.2.4.1 Main Steam Chase (Volume 16)

Possible pipe whip targets include the feedwater and main steam lines which are assumed to be unaffected, because they are larger and thicker walled than the HPCI steam line. No other SSD equipment is affected by a HPCI steam line pipe whip.

Jet impingement targets include the ceiling through which Division II embedded conduits are routed. The effects of jet impingement on the ceiling is discussed in Section I.5.2.1.1. However, the environmental effects from a HPCI steam line break are less severe than a break of one of the main steam lines.

For this postulated HELB, the path to safe shutdown would consist of using the SRVs for RPV depressurization and Division I CS to maintain reactor water level and Division I RHR to remove decay heat. No single active failure can prevent the use of either essential division to safely shutdown the unit.

Compartment flooding would not affect any SSD equipment. The HPCI steam line break is bounded by the main steam line break; therefore, any environmental effects will be less severe. Thus, a path to safe shutdown has been demonstrated.

Isolation of the HPCI steamline PS18-8"-ED is assured, since the terminal end break cannot target the outboard containment isolation valve MO-2035 or the cabling to the valve. Therefore, even with a single active failure to either containment isolation valve on line PS18-8"-ED, isolation of the break is accomplished with the remaining containment isolation valve.

I.5.2.4.2 Torus Area (Volumes 9 and 12)

No intermediate break locations were postulated on the HPCI Steam line in this compartment.

I.5.2.4.3 HPCI Room (Volume 8)

Only HPCI System components are located in this area. Any postulated HELB on the HPCI steam line would affect only itself. The 4 KV power cables for the Division II Core Spray and RHR pumps in the adjoining equipment and floor drain tank room (Volume 6) are environmentally qualified for the expected environmental conditions. If the assumed single active failure is in the Division II ECCS systems, safe shutdown could still be accomplished using the Division I equipment. Safe shutdown could be accomplished using the same path to safe shutdown as described for HPCI breaks in the steam chase.

I.5.2.5 RCIC (Steam) System

The high energy piping for the RCIC System is located in the steam chase (Volume 16), the torus area (Volume 9) and RCIC compartment (Volume 5) in the Reactor Building.

I.5.2.5.1 Main Steam Chase (Volume 16)

For a postulated HELB on the RCIC steam line, the only SSD equipment affected by either pipe whip or jet impingement would be the ceiling to the compartment, in which Division II control and power cables are located, and the HPCI steam line (PS18-8"-ED). The effects on the ceiling are bounded by effects from a postulated main steam line break, and so have no impact on safe shutdown. Due to the potential jet orientation, the loss of the HPCI steamline, and hence, the HPCI System was assumed. For this postulated HELB, the path to safe shutdown would consist of using the SRVs for RPV depressurization and Division I CS to maintain reactor water level and Division I RHR to remove decay heat. No single active failure can prevent the use of either essential division to safely shutdown the unit.

Flooding from the RCIC steam line break in the main steam chase, assuming all steam condenses and remains in the compartment, would be bounded by the main steam line break. The environmental conditions generated both in the main steam chase and in adjoining compartments would be bounded by the effects of a postulated main steam line break. Therefore, no new adverse conditions have been produced, and paths to safe shutdown described for the postulated main steam line break are applicable here.

Isolation of the RCIC steamline PS17-3"-ED is assured, since the terminal end break cannot target the outboard containment isolation valve MO-2076, or the cabling to the valve. Therefore, even with a single active failure to either containment isolation valve on line PS17-3"-ED, isolation of the break is accomplished with the remaining containment isolation valve.

I.5.2.5.2 Torus Area (Volume 9)

No intermediate break locations were postulated on the RCIC Steam line in this compartment.

I.5.2.5.3 RCIC Compartment (Volume 5)

The only SSD components in this compartment are the RCIC equipment with the exception of the Division I RHR and Core Spray pumps' 4 KV power cables. Because of the RCIC pipe geometry, it is possible to cause a jet impingement on these cables. If these cables are damaged, only the Division I CS and RHR pumps, and the RCIC System are lost. The HPCI System would remain available, since the resulting temperature transient in the torus area would not cause a trip of the HPCI steamline temperature sensors and subsequent isolation of the HPCI steamline. By using the remaining SSD equipment, with any one single failure, a path to safe shutdown exists. For the worst case, loss of the Division II Emergency Diesel Generator, the HPCI system and the SRVs

could be used until the Division I Emergency Diesel could be cross-tied to power the Division II equipment and safe shutdown would be achieved. For flooding, compartment pressurization, and environmental effects only these power cables would be affected. Since a path to safe shutdown has already been demonstrated, assuming a loss of the Division I ECCS pumps, evaluation of the other affects is not required.

I.5.2.6 Reactor Water Clean Up (RWCU) System

The Reactor Water Cleanup high energy lines are located in the RWCU compartment (Volumes 28-32), the steam chase (Volume 16), the MG set room (Volume 26), the northwest side of elevation 962-foot (Volume 27) and the northwest side of elevation 935-foot of the Reactor Building (Volume 18).

The RWCU supply REW3-4"-ED and the return line REW6-3"-ED were seismically analyzed. Break locations were selected based upon the seismic analysis of the piping.

I.5.2.6.1 RWCU Area (Volume 28-32)

The possible RWCU supply line pipe whip or jet impingement targets consist of conduits which supply power to the Division II reactor sample outboard containment valve, both Division II Core Spray containment isolation valves, and both Primary Containment Atmospheric Control (PCAC) valve's air/nitrogen supply lines.

The Primary Containment Atmospheric Control (PCAC) valve and one Core Spray isolation valve are normally closed. Loss of power to these valves would cause no change of state and create no adverse concerns. In addition, the Division II Core Spray System has a check valve located inside primary containment unaffected by the HELB.

Jet impingement in the RWCU compartment can conservatively target any of the above valves. The RWCU outboard containment isolation valve is not a jet impingement target because of pipe geometry. Isolation of the RWCU supply line, REW 3-4"-ED, is assured, since the terminal end break cannot target the outboard containment isolation valve MO-2398, or the cabling to the valve. Therefore, even with a single active failure to either containment isolation valve on line REW 3-4"-ED, isolation of the break is accomplished with the remaining containment isolation valve.

Redundant valves inside the Primary Containment or located outside this compartment mitigate any concerns on loss of the above components. The air supply to the PCAC isolation valves AO-2386 and AO-2387 was upgraded and hardened against postulated critical cracks. For the affected valves, safe shutdown can be accomplished using the Division I equipment and the HPCI System. Sufficient redundancy exists to be able to shutdown the unit assuming a single active failure.

Compartment flooding would not be a problem, since no other SSD equipment would be adversely affected by flooding other than the SSD equipment directly affected by pipe whip or jet impingement. Environmental effects are evaluated

in the MNGP Environmental Qualification (EQ) program based on the break cases identified in this Appendix. Bounding profiles for environmental conditions are identified. The environmental conditions include compartment pressurization, heatup, and flooding effects.

I.5.2.6.2 MG Set Room (Volume 26)

There are no postulated breaks or cracks in this area. The RWCU return piping outside the RWCU compartment is seismically analyzed in accordance with the criteria defined in Section I.3.1.1(4). There are no postulated intermediate RWCU HELBs or critical cracks outside the RWCU compartment.

I.5.2.6.3 Reactor Building 962-Foot Elevation, Northwest Area (Volume 27)

There are no postulated breaks or cracks in this area. There are no postulated intermediate RWCU HELBs or cracks outside the RWCU compartment as identified in I.5.2.6.2.

I.5.2.6.4 Reactor Building Open Area, 935-Foot Elevation, West Side (Volume 18)

There are no postulated pipe breaks or cracks in this area. There are no postulated intermediate RWCU HELBs or cracks outside the RWCU compartment as identified in I.5.2.6.2.

I.5.2.6.5 Main Steam Chase (Volume 16)

There are no pipe whip targets for SSD in this area. Any other concerns in this area are bounded by other larger pipes discussed in Sections I.5.2.1, I.5.2.2, and I.5.2.4.

Safe shutdown would be accomplished in the manner described in Section I.5.2.1.1, with potentially either HPCI or RCIC not available.

I.5.2.7 Core Spray System

As indicated in I.2.1.8, there are no postulated break locations for this system.

I.5.2.8 Residual Heat Removal System

As indicated in I.2.1.9, there are no postulated break locations for this system.

I.5.2.9 HPCI (Water) System

The high energy portion of this system is located entirely within the main steam chase (Volume 16). The environmental effects of this postulated HELB are bounded by the Feedwater line break in the steam chase.

I.5.2.10 RCIC (Water) System

The high energy portion of this system is located entirely within the main steam chase (Volume 16). The environmental effects of this postulated HELB are bounded by the Feedwater line break in the steam chase.

I.5.2.11 Standby Liquid Control

Line CH2-1 1/2"-DC from containment penetration X-42 to check valve XP-6 is not routed in the vicinity of any safe shutdown components. An inboard check valve will limit any energy release, and because of the small volume of water contained between the inboard containment check valve and valve XP-6, compartment (Volume 13) pressurization and flooding are not a concern because of an extensive drain system and a large free volume.

I.5.2.12 Off-Gas System

The steam supply line SHP101-4" is located in the condenser bay area (Volume 15), and the SJAE room (Volume 14) in the Turbine Building. The effects of postulated breaks on this line in the condenser area are bounded by the postulated breaks on other lines such as Feedwater and Main Steam (see Sections I.5.2.1 and I.5.2.2). There is no SSD equipment in the SJAE Room to be affected by a pipe whip or jet impingement. Postulated breaks on line SHP101-4" are bounded by other postulated HELBs, for which paths to safe shutdown have been demonstrated (see Sections I.5.2.1 and I.5.2.2). All other high energy lines in the Offgas System are located in the Offgas Storage and Compressor Building, in which no safe shutdown equipment is located. Since the occurrence of a HELB in this area can have no impact on systems required to mitigate accidents, no further evaluations need to be made.

I.5.2.13 Zinc Oxide Injection System (GEZIP)

The portions of the GEZIP system with postulated HELBs are the 1 1/2" portions near the Feedwater and Condensate lines (Volume 3) in the Turbine Building. However, due to the proximity to the postulated Feedwater and Condensate Systems HELBs, any adverse effects from a GEZIP HELB would be enveloped by a postulated HELB on one of the Feedwater or Condensate lines. Since pathways to safe shutdown have been demonstrated for the Feedwater and Condensate postulated HELBs, these same pathways would exist for a much smaller GEZIP HELB.

I.5.3 **Table of System Effects**

Table I.5-2 shows the effect of specific high energy line breaks by volume and system. This table includes the required auxiliary systems which are considered potential HELB targets. Any system not affected by a postulated HELB is to be considered available to support safe shutdown. The meaning of the letter codes used in the table are as follows:

- F - Primary failure as a direct result of a line break.
- A - System is unaffected by a line break and is available to support safe shutdown.
- U - The system is unavailable due to the failure of a required function or component associated with another system.

Table I.5-1 Location of High Energy Systems and Safe Shutdown Equipment by Volume

| LOCATION OF HIGH ENERGY SYSTEMS AND SAFE SHUTDOWN EQUIPMENT BY VOLUME (REACTOR BUILDING) | | | | | | | | | | | | | | | | | | |
|--|---|-----|-----|-----|-----|-----|-----|-----|-----|-----|------|-----|-----|-------|------|-----|------|-------|
| PAGE 1 OF 2 | | | | | | | | | | | | | | | | | | |
| HIGH ENERGY SYSTEM | VOLUME ¹ (SEE PAGE 2 FOR ADDITIONAL VOLUMES) | | | | | | | | | | | | | | | | | |
| | 1 | 14 | 15 | 13 | 21 | 3 | 6 | 8 | 7 | 18 | 16 | 20 | 33 | 28-32 | 5 | 17 | 9-12 | 26-27 |
| MAIN STEAM | — | — | — | — | — | — | — | — | — | — | HEBC | — | — | — | — | — | — | — |
| FEEDWATER | — | — | — | — | — | — | — | — | — | — | HEBC | — | — | — | — | — | — | — |
| CONDENSATE | — | — | — | — | — | — | — | — | — | — | — | — | — | — | — | — | — | — |
| HPCI (STEAM) | — | — | — | — | — | — | — | HEB | — | — | HEBC | — | — | — | — | — | HEC | — |
| RCIC (STEAM) | — | — | — | — | — | — | — | — | — | — | HEBC | — | — | — | HEBC | — | HEC | — |
| REACTOR WATER CLEANUP | — | — | — | — | — | — | — | — | — | HE | HEBC | — | — | HEBC | — | — | — | HE |
| CORE SPRAY | — | — | — | — | HE | — | — | — | — | — | — | — | — | HE | — | — | — | — |
| RESIDUAL HEAT REMOVAL | — | — | — | HE | — | — | — | — | — | — | — | HE | — | — | — | — | — | — |
| HPCI (INJECTION) | — | — | — | — | — | — | — | — | — | — | HEBC | — | — | — | — | — | — | — |
| RCIC (INJECTION) | — | — | — | — | — | — | — | — | — | — | HEBC | — | — | — | — | — | — | — |
| STANDBY LIQUID CONTROL | — | — | — | HEB | — | — | — | — | — | — | — | — | — | — | — | — | — | — |
| OFF-GAS | — | — | — | — | — | — | — | — | — | — | — | — | — | — | — | — | — | — |
| CRD SYSTEM | — | — | — | — | — | — | — | — | — | — | — | — | — | — | — | — | — | — |
| GEZIP | — | — | — | — | — | — | — | — | — | — | — | — | — | — | — | — | — | — |
| INSTRUMENT AND SAMPLE LINES | — | — | — | — | — | — | — | — | — | — | — | — | — | — | — | — | — | — |
| DOES VOLUME CONTAIN SAFE SHUTDOWN EQUIPMENT? | YES | YES | YES | YES | YES | YES | YES | YES | YES | YES | YES | YES | YES | YES | YES | YES | YES | YES |

¹ SEE SECTION I.2.1

Table I.5-1 Location of High Energy Systems and Safe Shutdown Equipment by Volume

| LOCATION OF HIGH ENERGY SYSTEMS AND SAFE SHUTDOWN EQUIPMENT BY VOLUME (TURBINE BUILDING) | | | | | | |
|--|---------------------|-----|-----|------|-----|------|
| PAGE 2 OF 2 | | | | | | |
| HIGH ENERGY SYSTEM | VOLUME ¹ | | | | | |
| | 3 | 2 | 21 | 15 | 14 | 37 |
| MAIN STEAM | — | — | — | HEBC | HEB | HEBC |
| FEEDWATER | HEB | HEC | HE | HEBC | — | HEBC |
| CONDENSATE | HEB | HE | HE | HEBC | — | — |
| HPCI (STEAM) | — | — | — | — | — | — |
| RCIC (STEAM) | — | — | — | — | — | — |
| REACTOR WATER CLEANUP | — | — | — | — | — | — |
| CORE SPRAY | — | — | — | — | — | — |
| RESIDUAL HEAT REMOVAL | — | — | — | — | — | — |
| HPCI (INJECTION) | — | — | — | — | — | — |
| RCIC (INJECTION) | — | — | — | — | — | — |
| STANDBY LIQUID CONTROL | — | — | — | — | — | — |
| OFF-GAS | — | — | — | HEB | HEB | — |
| CRD SYSTEM | — | — | — | — | — | — |
| GEZIP | HEB | — | — | — | — | — |
| INSTRUMENT AND SAMPLE LINES | — | — | — | — | — | — |
| DOES VOLUME CONTAIN SAFE SHUTDOWN EQUIPMENT? | YES | YES | YES | YES | NO | NO |

| | | | |
|-----|------|---|---|
| KEY | — | - | HIGH ENERGY PIPING OF THIS SYSTEM IS NOT LOCATED IN THIS COMPARTMENT, OR ALL HIGH ENERGY PIPING OF THIS SYSTEM HAS BEEN EXCLUDED BY 2% CRITERION, IS 1" NOMINAL PIPE SIZE OR SMALLER, OR BREAKS ARE NOT REQUIRED TO BE ASSUMED. |
| | HE | - | CONTAINS HIGH ENERGY PIPING OF THIS SYSTEM (NOT EXCLUDED BY 2% CRITERION AND IS LARGER THAN 1, NOMINAL PIPE SIZE). |
| | HEB | - | CONTAINS BREAK LOCATIONS FOR THE HIGH ENERGY PIPING OF THIS SYSTEM. |
| | HEC | - | CONTAINS CRITICAL CRACK LOCATIONS FOR THE HIGH ENERGY PIPING OF THIS SYSTEM. |
| | HEBC | - | CONTAINS BREAK AND CRITICAL CRACK LOCATIONS FOR THE HIGH ENERGY PIPING OF THIS SYSTEM. |

Table I.5-2 Table of System Effects

| SYSTEM | STEAM CHASE (16) | | | | | HPCI ROOM (8) | RCIC ROOM (5) | CONDENSER AREA (15) | | | | | SJAE 14 ROOM | TURBINE BLDG. FEED PUMP AREA (2, 3) | | | | RWCU COMP (28-32) | REACTOR BLDG. (13) | TURBINE (37) BLDG. |
|---------------------------------------|-----------------------|-----------|-----------|-----------|-----------|----------------|---------------|---------------------|----------------|----------------|------------------|-----------------------|-----------------|-------------------------------------|----------------|----------------|-----------------|-------------------|--------------------|--------------------|
| | MAIN STEAM PS 1,2,3,4 | HPCI PS18 | RCIC PS17 | FEEDWATER | RWCU REW6 | HPCI PS18 | RCIC PS17 | CONDENSATE C4A | CONDENSATE C4B | FEEDWATER FW10 | STEAM BYPASS PS7 | MAIN STEAM PS 4,3,2,1 | MAIN STEAM PS 9 | CONDENSATE C7 | CONDENSATE C4A | FEEDWATER FW2A | FEEDWATER REW2B | REW6 REW3 | SBLC RCH2 | ⑥ |
| HPCI | A | F | F | F | U | F | A | A | A | A | F | A | A | A | A | A | A | A | A | A |
| RCIC (12) | A | A | F | F | U | A ^⑩ | A | A | A | A | A | A | A | U | U | U | U | A | A | A |
| SRVS | A | A | A | A | A | A | A | A | A | A | A | A | A | A | A | A | A | A | A | A |
| RHR-LPCI DIV1 | A | A | A | A | A | A | F | A | A | A | A | A | A | U | U | U | U | A | A | A |
| RHR-LPCI DIV2 | A | A | A | A | A | A | A | A | A | A | A | A | A | U ^⑪ | U ^⑪ | U ^⑪ | U ^⑪ | A | A | A |
| RHR-SPC DIV1 | A | A | A | A | A | A | F | A | A | A | A | U | A | U | U | U | U | A | A | A |
| RHR-SPC DIV2 | A | A | A | A | A | A | A | A | A | A | A | A | A | A | A | A | A | A | A | A |
| RHR-SDC DIV1 | A | A | A | A | A | A | F | A | A | A | A | U | A | U | U | U | U | A | A | A |
| RHR-SDC DIV2 | A | A | A | A | A | A | A | A | A | A | A | A | A | U ^⑪ | U ^⑪ | U ^⑪ | U ^⑪ | F ^⑤ | A | A |
| RHR-SERVICEWATER DIV1 | A | A | A | A | A | A | A | A | A | A | A | F ^③ | A | U | U | U | U | A | A | A |
| RHR-SERVICEWATER DIV2 | A | A | A | A | A | A | A | A | A | A | A | A | A | A | A | A | A | A | A | A |
| CORE SPRAY DIV1 | A | A | A | A | A | A | F | A | A | A | A | A | A | U | U | U | U | A | A | A |
| CORE SPRAY DIV2 | A | A | A | A | A | A | A | A | A | A | A | A | A | A | A | A | A | F | A | A |
| EMERGENCY SERVICE WATER DIV1 | A | A | A | A | A | A | A | A | A | A | A | A | A | A | A | A | A | A | A | A |
| EMERGENCY SERVICE WATER DIV2 | A | A | A | A | A | A | A | A | A | A | A | A | A | A | A | A | A | A | A | A |
| EMERGENCY POWER DIV1 | A | A | A | A | A | A | A | A | A | A | A | A | A | F ^④ | F ^④ | F ^④ | F ^④ | A | A | A |
| EMERGENCY POWER DIV2 | A | A | A | A | A | A | A | A | A | A | A | A | A | A | A | A | A | A | A | A |
| RPCS CONTROL ROD VALVES, CONTROL RODS | A | A | A | A | A | A | A | A | A | A | A | A | A | A | A | A | A | A | A | A |
| HVAC ECCS ROOM | A | A | A | A | A | A | A | A | A | A | A | A | A | A | A | A | A | A | A | A |

KEY

F= PRIMARY FAILURE AS A DIRECT RESULT OF A LINE BREAK.

A= SYSTEM IS UNAFFECTED BY A LINE BREAK AND IS AVAILABLE TO SUPPORT SAFE SHUTDOWN.

U= THE SYSTEM IS UNAVAILABLE DUE TO THE FAILURE OF A REQUIRED FUNCTION OR COMPONENT ASSOCIATED WITH ANOTHER SYSTEM.

SAFE SHUTDOWN SYSTEM

- REACTIVITY CONTROL
 — RESTORE AND MAINTAIN RPV WATER LEVEL
 — RPV DEPRESSURIZATION
 — DECAY HEAT REMOVAL
 — AUXILIARY SUPPORT

NOTES;

- DELETED
- DELETED
- APPLIES TO PS4 ONLY.
- MCC 133A,B.
- DIV. 2 CONTAINMENT SPRAY ONLY.
- THERE ARE NO SSD TARGETS IN THE AREA.
- THE SRVS ARE RESPONSIBLE FOR RPV OVERPRESSURE PROTECTION.
- DELETED.
- DELETED.
- SYSTEM UNAVAILABLE UNTIL TEMPERATURE SENSOR ISOLATION RESET (~10 MIN.).
- UNAVAILABLE UNTIL ISOLATED FROM MCC 133B.
- Though not required safe shutdown equipment, RCIC if available could be used.

**APPENDIX I *EVALUATION OF HIGH ENERGY LINE
BREAKS OUTSIDE CONTAINMENT*****I.6 References**

1. Postulated Pipe Failures Outside Containment, Monticello Nuclear Generating Plant, Monticello, Minnesota, August 1973.
2. Letter from A. Giambusso, Deputy Director for Reactor Projects, to Northern States Power Company, Subject: High Energy Breaks Outside of the Containment, December 18, 1972.
3. Standard Review Plan 3.6.1, Plant Design for Protection Against Postulated Piping Failures in Fluid Systems Outside Containment, Rev. 1, July 1981.
4. Standard Review Plan 3.6.2, Determination of Rupture Locations and Dynamic Effects Associated with the Postulated Rupture of Piping, Rev. 1, July 1981.
5. NSP, Monticello Nuclear Generating Plant, Northern States Power Company, Fire Protection and Safe Shutdown Analysis Engineering Report, October 1986.
6. United States Atomic Energy Commission - Safety Evaluation by the Directorate of Licensing, Docket No. 50-263, Monticello Nuclear Generating Plant - "Analysis of the Consequences of High Energy Piping Failures Outside Containment", July 29, 1974.
7. ANSI/ANS-58.2-1980, American National Standard, Design Basis for Protection of Light Water Nuclear Power Plants Against Effects of Postulated Pipe Rupture, December 31, 1980.
8. NSP (E C Ward) letter to AEC (A. Giambusso), "Monticello Nuclear Generating Plant E-5979 Postulated Pipe Failures Outside Containment," Docket No. 50-263, dated September 7, 1973, with attachment, "Postulated Pipe Failures Outside Containment", August 1973.
9. NRC NRR Office Instruction, "Control of Licensing Bases for Operating Reactors", LIC-100, Revision 1, January 7, 2004.
10. NSP (D M Musolf) letter to NRC, "Failure to Provide High Energy Line Break Protection for the Turbine Building Pipe Chase", dated April 9, 1986.
11. NUTECH Engineering Report NSP-30-102, Revision 0, "Review of High Energy Line Analysis for the Monticello Nuclear Generating Station", June 1986.
12. NSP letter to Terry Maxey; Subject: Evaluation of RHR Pressure and Temperature Increase for Environmental Qualification Impact, June 11, 1985.

13. NRC (R M Bernero) Generic Letter 86-01, "Safety Concerns Associated with Pipe Breaks in the BWR Scram System", January 3, 1986.
14. Scram Discharge Volume Design Change Recommendations, SIL No. 331, October 13, 1980.
15. Survey Book, High Energy Lines in Systems considered in 1972 HELB Analysis, May 1986.
16. Survey Sheets and Survey Notes for Identified Non-Bechtel High Energy Lines, June 1986.
17. Nutech Calculation NSP730.0101-001 "Determination of High Energy Pipe Locations for the Systems, Bechtel Looked at in 1973".
18. Drawing, ND-100482, ESW-EFT ESW "A" Division Crosstie Piping ISO, Revision 0, 10/14/87.
19. Drawing, ND-100483, ESW-EFT ESW "B" Division Crosstie Piping ISO, Revision 0, 10/14/87.
20. Deleted.
21. NRC (F J Miraglia) Generic Letter 87-11, "Relaxation in Arbitrary Intermediate Pipe Rupture Requirements", June 19, 1987.
22. Deleted.
23. Nutech Calculation Package, NSP730.0020-001, Determination of "High Energy Pipe Break" Locations, June 1986.
24. Letter from David Musolf (NSP) to Director, Office of Nuclear Reactor Regulation, "Additional Information Related to High Energy Line Breaks Analysis", December 4, 1986.
25. Letter from David Musolf (NSP) to Director, Office of Nuclear Reactor Regulation, "Resolution of Deficiencies in High Energy Line Break Protection for the Monticello Plant," June 18, 1986.
26. ND-178628-1, Primary Steam System Break and Critical Crack Locations (PS1,2,3,4-18"-ED & PS30-18"-EDB).
27. ND-178628-2, Additional Primary Steam Break and Critical Crack Locations (PS6,7,8,11,12,13,14,21).
28. ND-178628-3, Additional Primary Steam Break and Critical Crack Locations (PS15-3"-EB).
29. ND-178628-4, HPCI System Steam Line Break and Critical Crack Locations (PS18-8"-ED).

30. ND-178628-5, Primary Steam Drain Break and Critical Crack Locations (D1,2,3-1.5"-ED & D4-2"-ED).
31. ND-178628-6, Additional Primary Steam Break Locations (PS9-3"-ED).
32. ND-178628-7, Additional Primary Steam Break Locations Air ejector E-2A (PS9-2"-ED).
33. ND-178628-8, Additional Primary Steam Break Locations Air Ejector E-2B (PS9-2"-ED).
34. ND-178628-9, Main Steam Drain Break Locations (D23-2"-EB).
35. ND-178628-10, Main Steam Equalizing Drain to Condenser Break Locations (D40-1.5"-EDB).
36. ND-178628-11, Condensate System Break Locations (C4A-16"-GB).
37. ND-178628-12, Condensate System (Continued) Break and Critical Crack Locations (C4B-16"-GB).
38. ND-178628-13, Condensate System (Continued) Break Locations (C4A-1.5"-EB).
39. ND-178628-14, Condensate System (Continued) Break Locations (C4B-1.5"-EB).
40. ND-178628-15, Feedwater System Break and Critical Crack Locations (FW2A-14"-DE, ED & FW2-6"-DE).
41. ND-178628-16, Feedwater System (Continued) Break Locations (FW2B-14"-DE, ED).
42. ND-178628-17, Standby Liquid Control System Break Locations (CH2-1 1/2"-DC).
43. ND-178628-18, Feedwater System (Continued) Break Locations Feedwater Heater E-15A (FW10-8"-DE & FW2A-14"-DE).
44. ND-178628-19, Feedwater System (Continued) Break Locations Feedwater Heater E-15B (FW10-8"-DE & FW2B-14"-DE).
45. ND-178628-20, Feedwater System (Continued) Break Locations Feedwater Recirculation lines (FW10-8"-DE).
46. ND-178628-21, Reactor Feed Pumps P-2A & P-2B (FW12A-1.5"-DE & FW12B-1.5"-DE).
47. ND-178628-22, Control Rod Drive Break Locations (CRD7-3"-DE).

48. ND-178628-24, HPCI Injection Line Break and Critical Crack Locations (TW3-12"-ED).
49. ND-178628-25, RCIC Injection Line Break and Critical Crack Locations (FW5-4"-ED).
50. ND-178628-26, RCIC System Steam Line Break and Critical Crack Locations (PS17-3"-ED).
51. ND-178628-27, Reactor Water Cleanup System Break and Critical Crack Locations (REW3-4"-DCD,DBD).
52. ND-178628-28, Reactor Water Cleanup Return Line Break Locations (REW6-3"-DBD).
53. ND-178628-29, Reactor Water Cleanup System (Continued) Break and Critical Crack Locations (REW6-3"-DC,DB,ED & REW6-1.5"-DB & REW6-4"-DB).
54. ND-178628-30, Off-Gas System Break Locations (SHP101-4"-HN1C).
55. ND-178628-31, Off-Gas System (Continued) Break Locations (SHP101-4"-HN1C).
56. ND-178628-32, Off-Gas System Break Locations (SHP101-4"-HN1C).
57. ND-178628-33, Steam Seal Regulator Piping Break Locations (PS10-5" & PS10-3").
58. MNGP Action Request A/R 01131913, Assignment 06, Review of MNGP HELB License Basis.
59. NRC (D C Dilanni) letter to NSP (D M Musolf), "Request For Additional Information Related to High Energy Line Breaks", dated September 09, 1987, with RAI enclosure.
60. NSP (D M Musolf) letter to NRC, "Additional Information Related to Updated High Energy Line Break Analysis", dated December 14, 1987
61. NRC (W O Long) letter to NSP (T M Parker), "Monticello High Energy Line Break Analysis (TAC No. 61788)", dated June 13, 1990
62. NSPM letter L-MT-09-044 (T J O'Connor) to NRC dated August 21, 2009, "Monticello Extended Power Uprate: Response to NRC Mechanical and Civil Engineering Review Branch (EMCB) Requests for Additional Informations (RAIs) dated March 28, 2009 (TAC No. MD9990)", dated August 21, 2009.
63. NRC (T A Beltz) letter to NSPM (K D Fili), "Monticello Nuclear Generating Plant - Issuance of Amendment No. 176 to Renewed Facility Operating License Regarding Extended Power Uprate (TAC NO. MD9990) ", dated December 9, 2013.

64. EC 24933, Calculation 01-002 Rev 1, Temperature and As-built Analyses of CRD and RWCU Piping; Terminal End Definitions.

FIGURES

Figure I.1-1 Reactor Bldg El. 896' - 0"

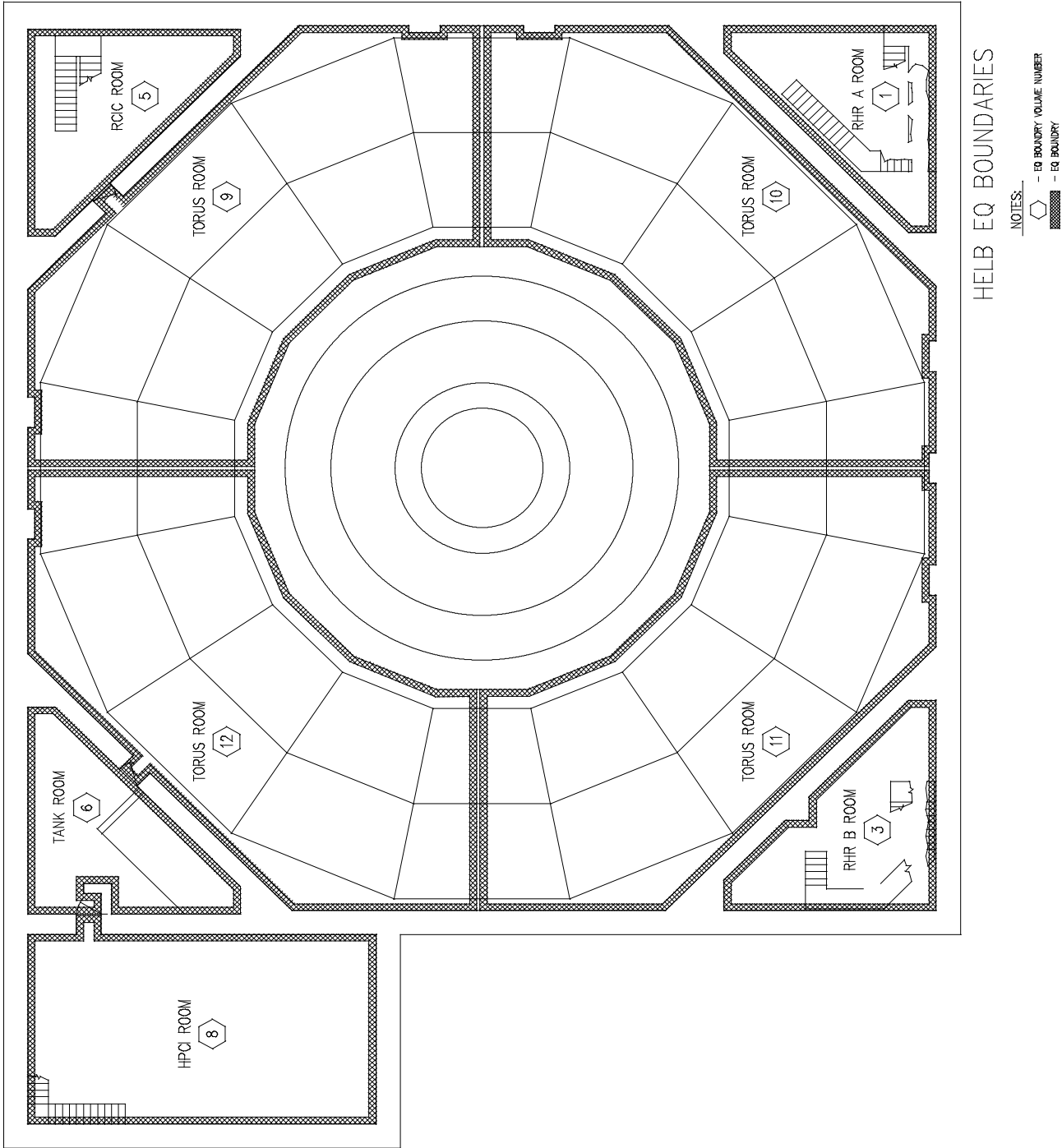


Figure I.1-2 Reactor Bldg (Approx 923')
Top of Torus - Upper Levels of RHR Rooms, HPCI, RCIC

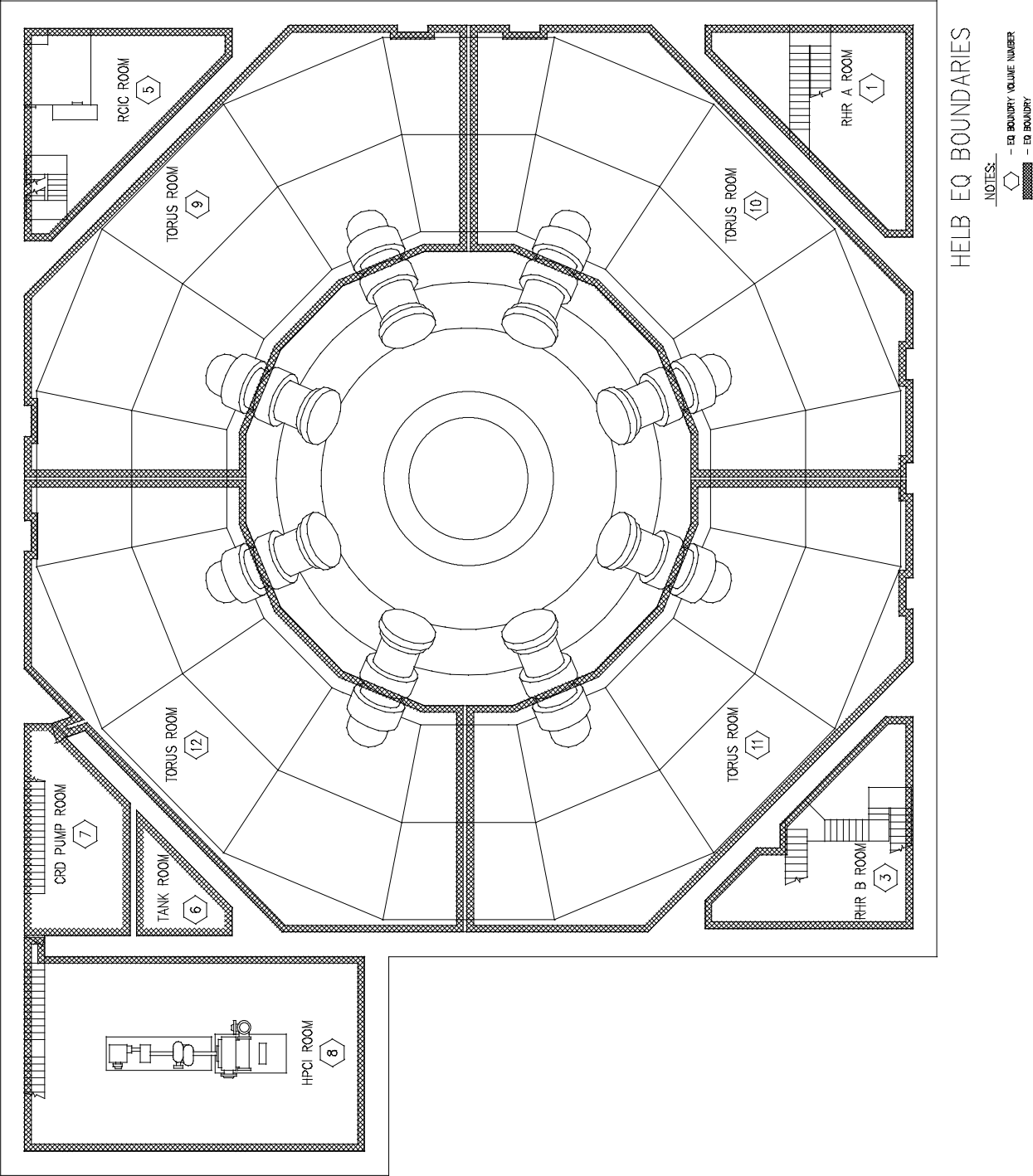


Figure I.1-3 Reactor Bldg - El. 935' - 0"

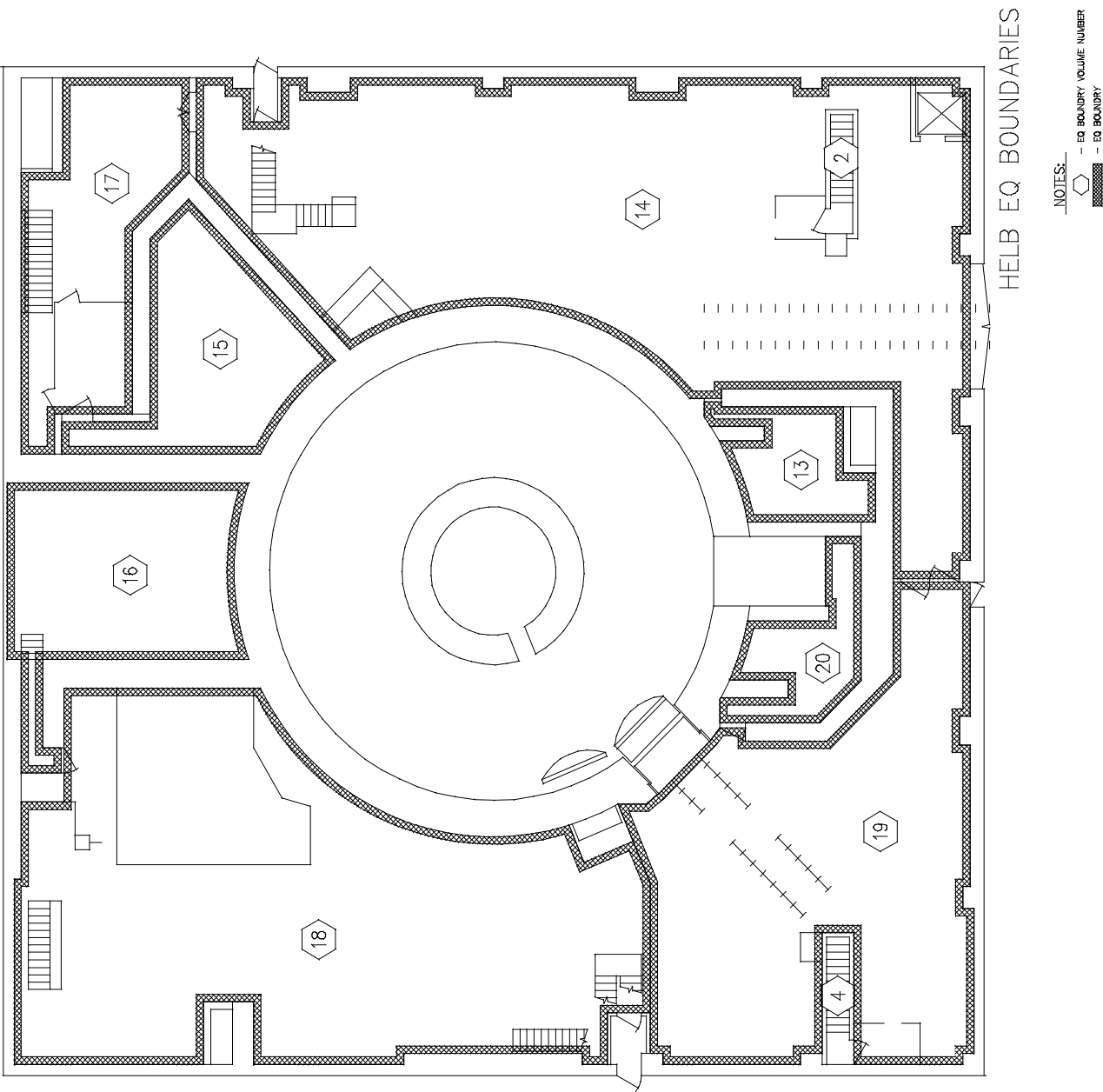


Figure I.1-4 Reactor Bldg - El. 962' - 0"

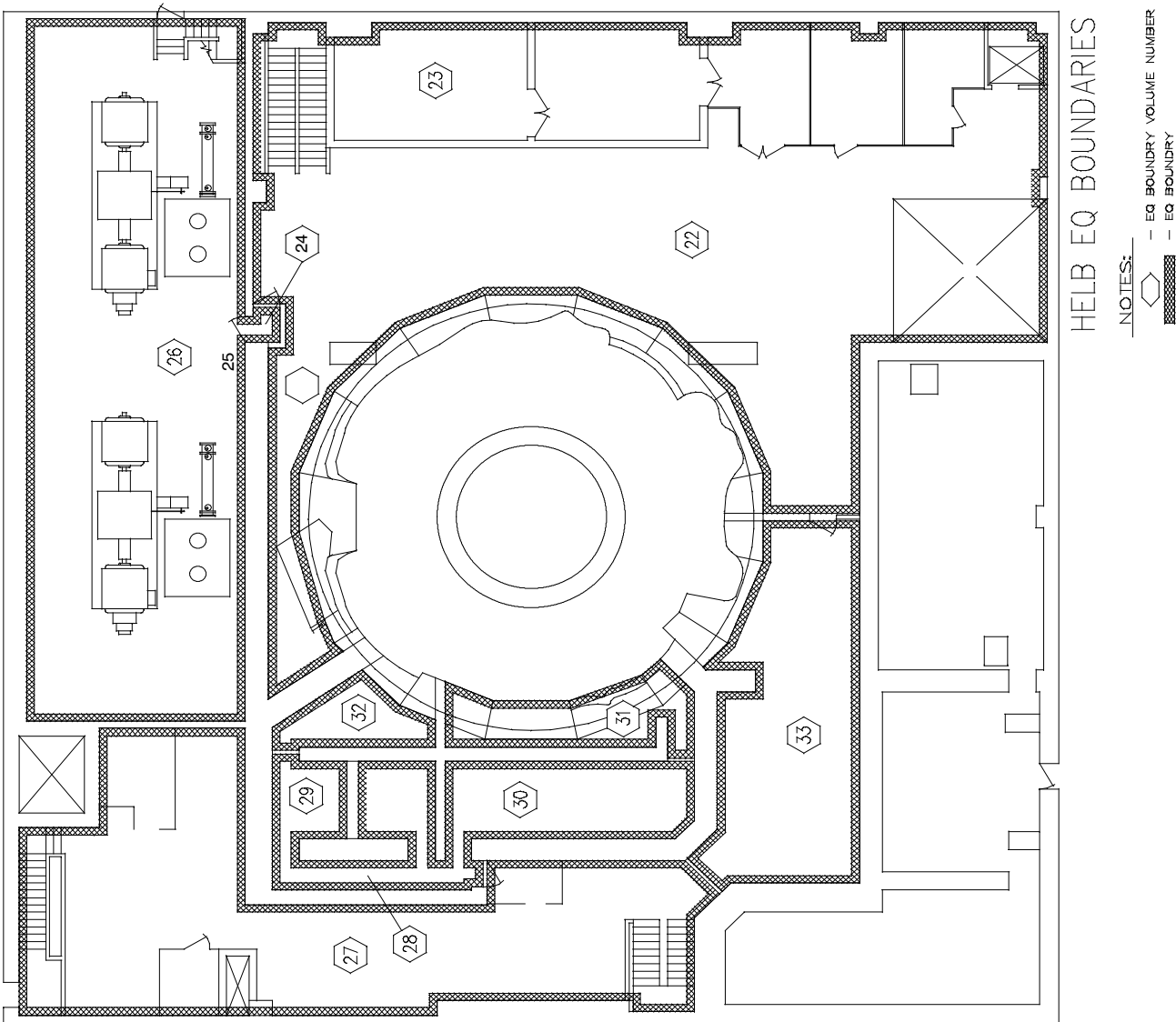


Figure I.1-5 Reactor Bldg - 985' (DW-983, Vessel-989)

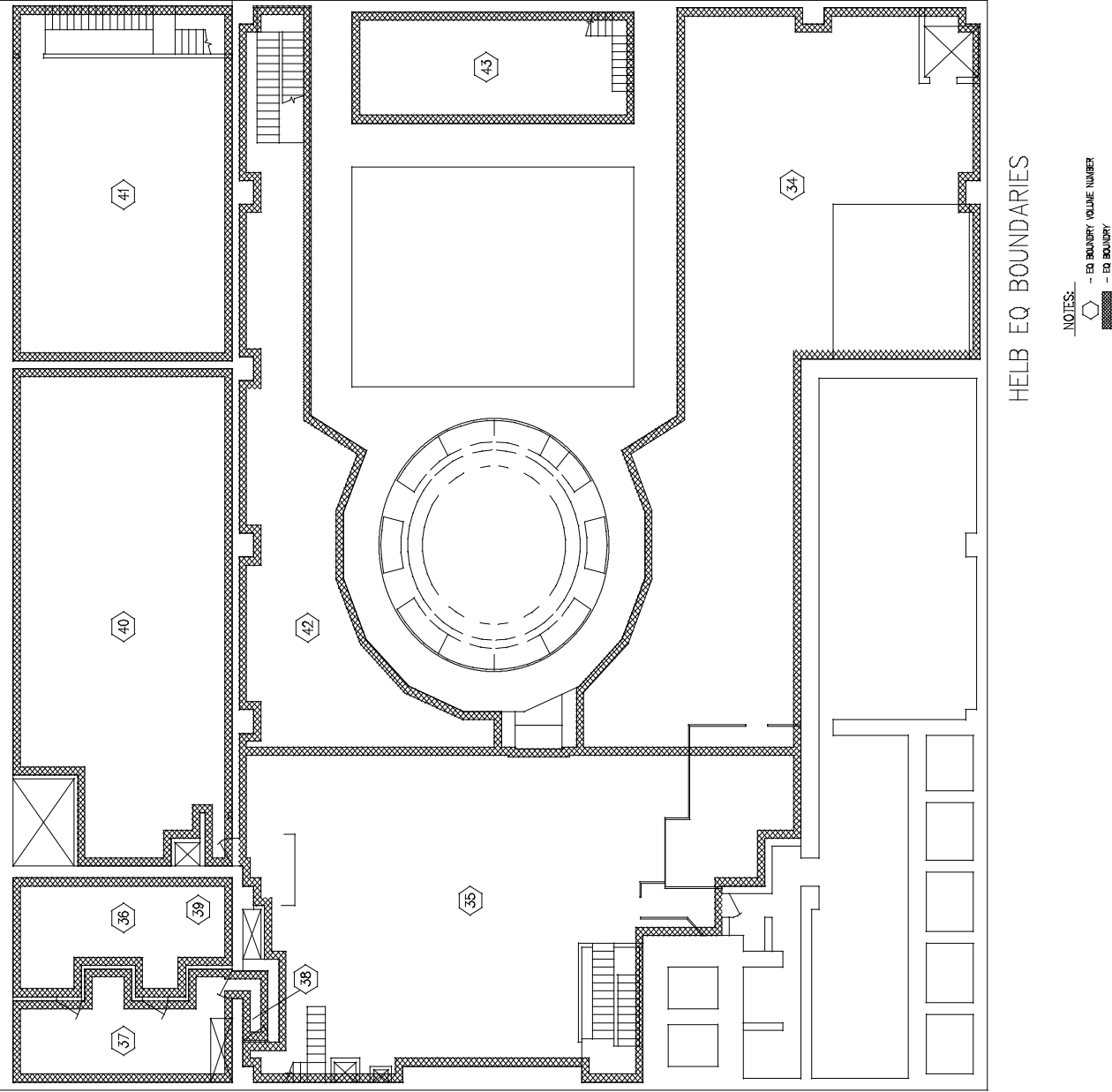


Figure I.1-6 Reactor Bldg - 1001'

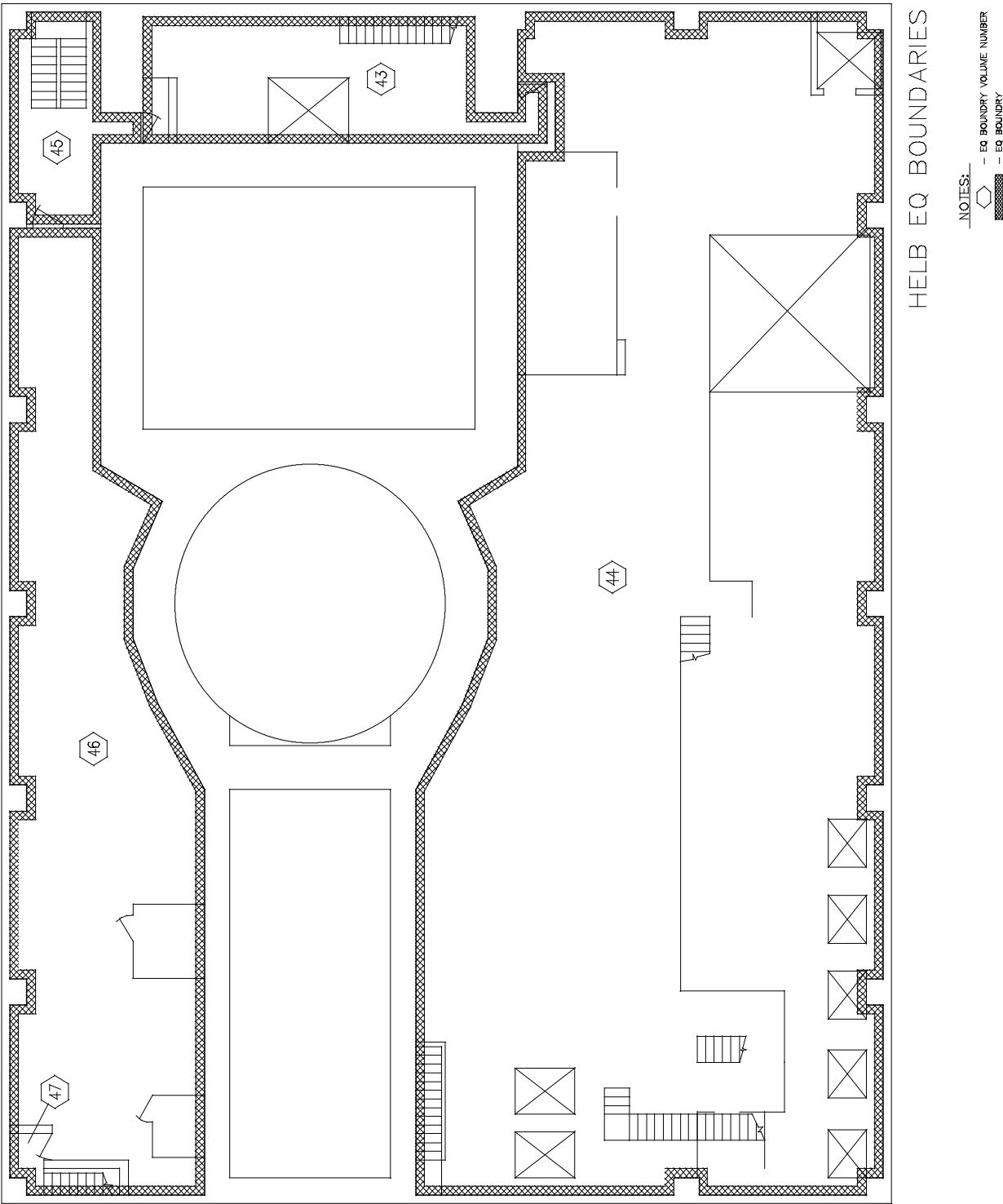


Figure I.1-7 Reactor Bldg - 1027'

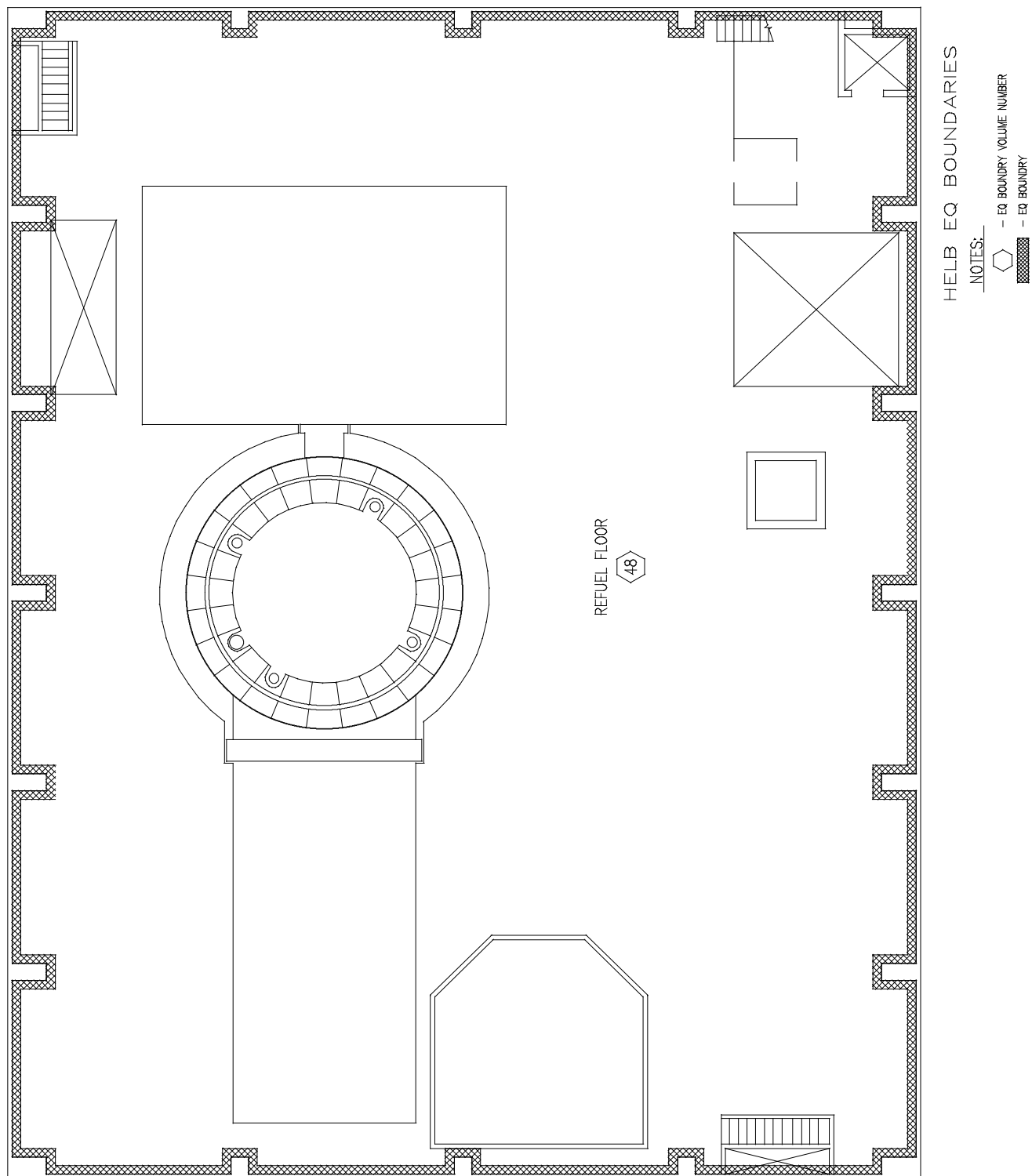


Figure I.1-8 Turbine Bldg. El. 911' - 0"

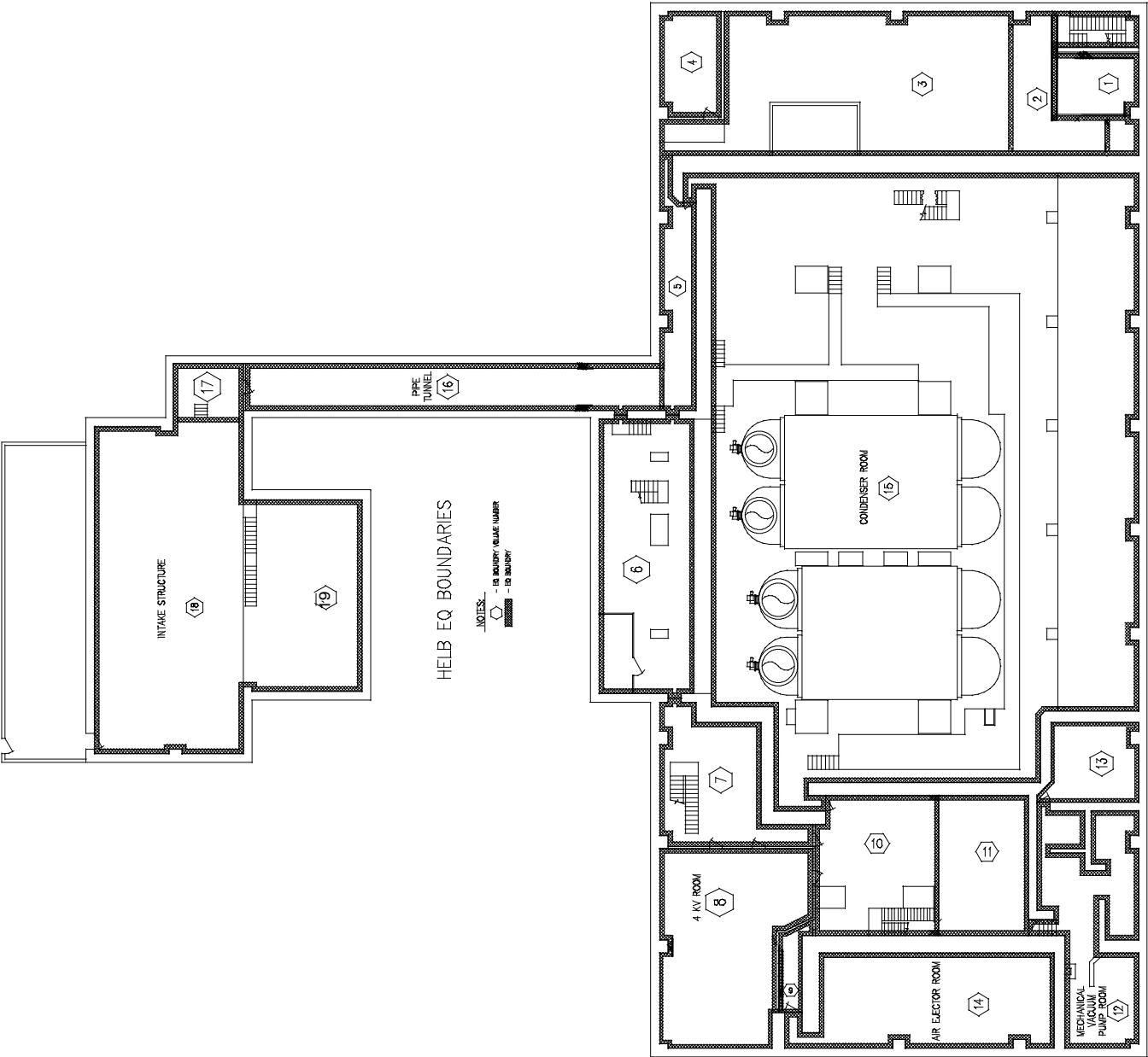


Figure I.1-9 Turbine Bldg. El. 931' - 0"

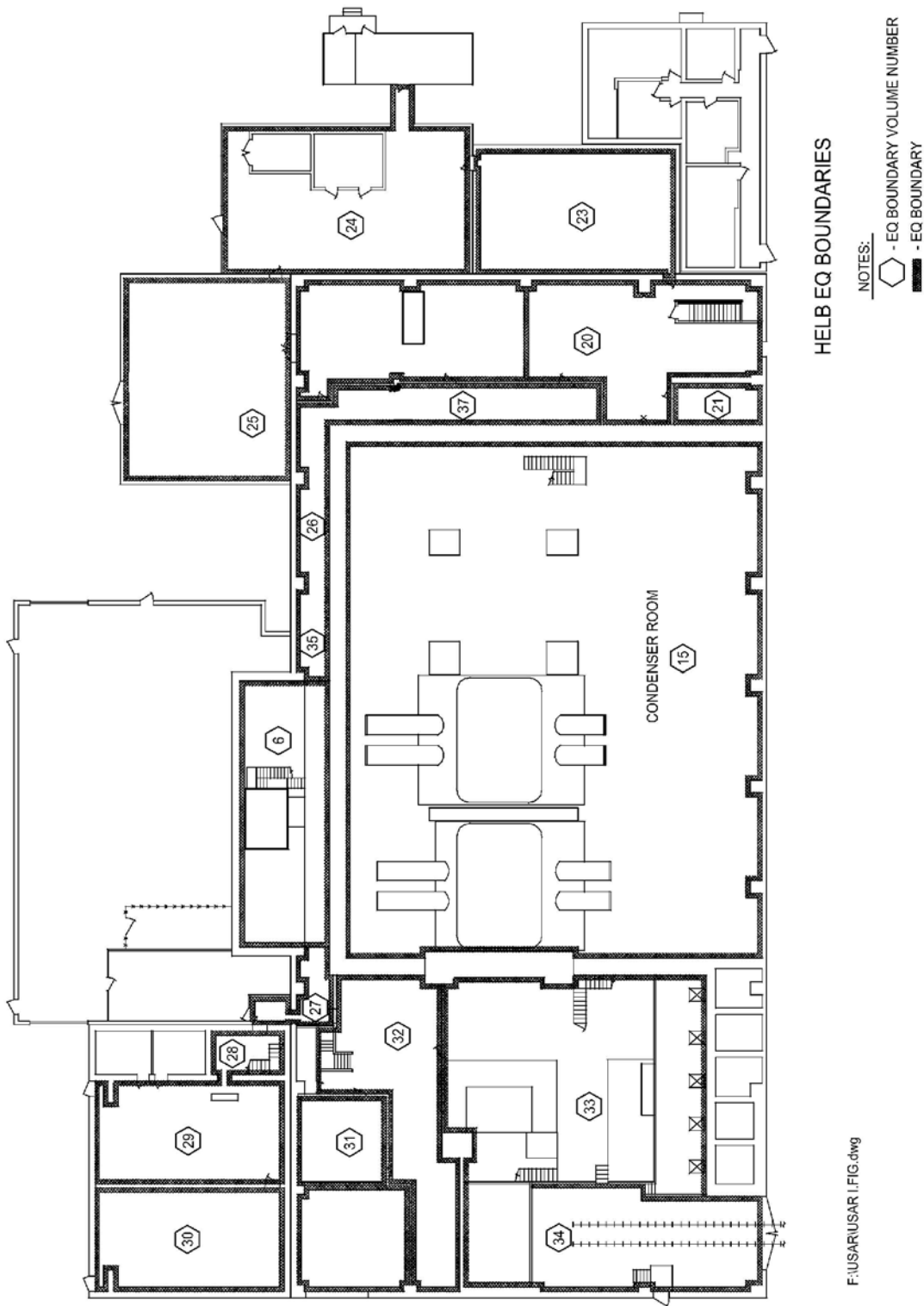


Figure I.1-10 Turbine Bldg. El. 951' - 0"

