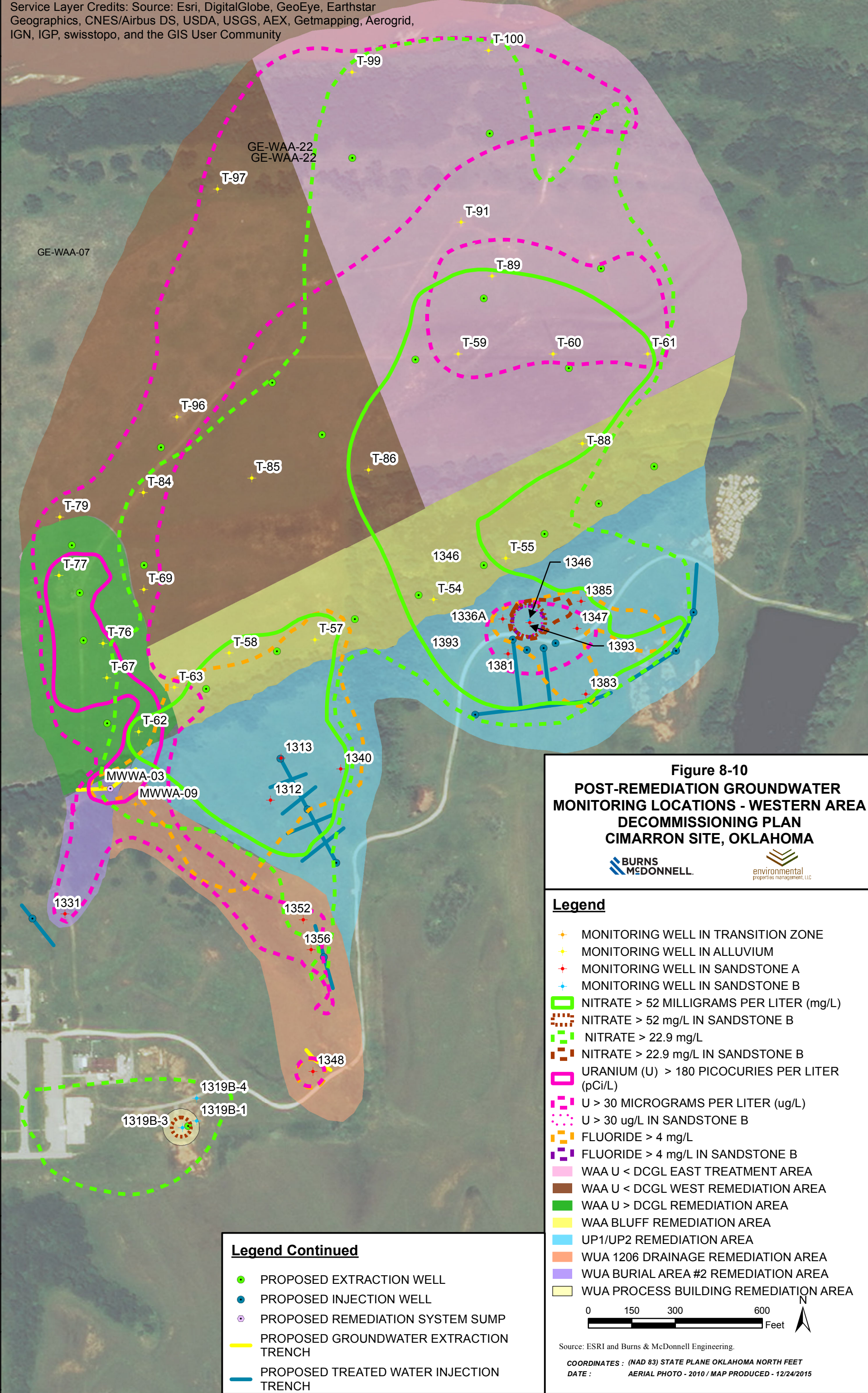


Path: Z:\Clients\ENV\CERT\_ClientInfo\Sites\Database\Geospatial\Maps\_Photos\_Dvgs\ArcGIS\BIMCD\_Files\Arcdocs\2015\Decommissioning Plan\Fig8-10 Post\_Remediation GW Mon Locations Western Area.mxd  
COPYRIGHT © 2015 BURNS & McDONNELL ENGINEERING COMPANY, INC.

Service Layer Credits: Source: Esri, DigitalGlobe, GeoEye, Earthstar Geographics, CNES/Airbus DS, USDA, USGS, AEX, Getmapping, Aerogrid, IGN, IGP, swisstopo, and the GIS User Community



**Figure 8-10**  
**POST-REMEDATION GROUNDWATER**  
**MONITORING LOCATIONS - WESTERN AREA**  
**DECOMMISSIONING PLAN**  
**CIMARRON SITE, OKLAHOMA**

**BURNS**  
**MCDONNELL**

**environmental**  
properties management, LLC

**Legend**

- MONITORING WELL IN TRANSITION ZONE
- MONITORING WELL IN ALLUVIUM
- MONITORING WELL IN SANDSTONE A
- MONITORING WELL IN SANDSTONE B
- NITRATE > 52 MILLIGRAMS PER LITER (mg/L)
- NITRATE > 52 mg/L IN SANDSTONE B
- NITRATE > 22.9 mg/L
- NITRATE > 22.9 mg/L IN SANDSTONE B
- URANIUM (U) > 180 PICOCURIES PER LITER (pCi/L)
- U > 30 MICROGRAMS PER LITER (ug/L)
- U > 30 ug/L IN SANDSTONE B
- FLUORIDE > 4 mg/L
- FLUORIDE > 4 mg/L IN SANDSTONE B
- WAA U < DCGL EAST TREATMENT AREA
- WAA U < DCGL WEST REMEDIATION AREA
- WAA U > DCGL REMEDIATION AREA
- WAA BLUFF REMEDIATION AREA
- UP1/UP2 REMEDIATION AREA
- WUA 1206 DRAINAGE REMEDIATION AREA
- WUA BURIAL AREA #2 REMEDIATION AREA
- WUA PROCESS BUILDING REMEDIATION AREA

0 150 300 600 Feet



Source: ESRI and Burns & McDonnell Engineering.

COORDINATES : (NAD 83) STATE PLANE OKLAHOMA NORTH FEET  
DATE : AERIAL PHOTO - 2010 / MAP PRODUCED - 12/24/2015

**Legend Continued**

- PROPOSED EXTRACTION WELL
- PROPOSED INJECTION WELL
- PROPOSED REMEDIATION SYSTEM SUMP
- PROPOSED GROUNDWATER EXTRACTION TRENCH
- PROPOSED TREATED WATER INJECTION TRENCH